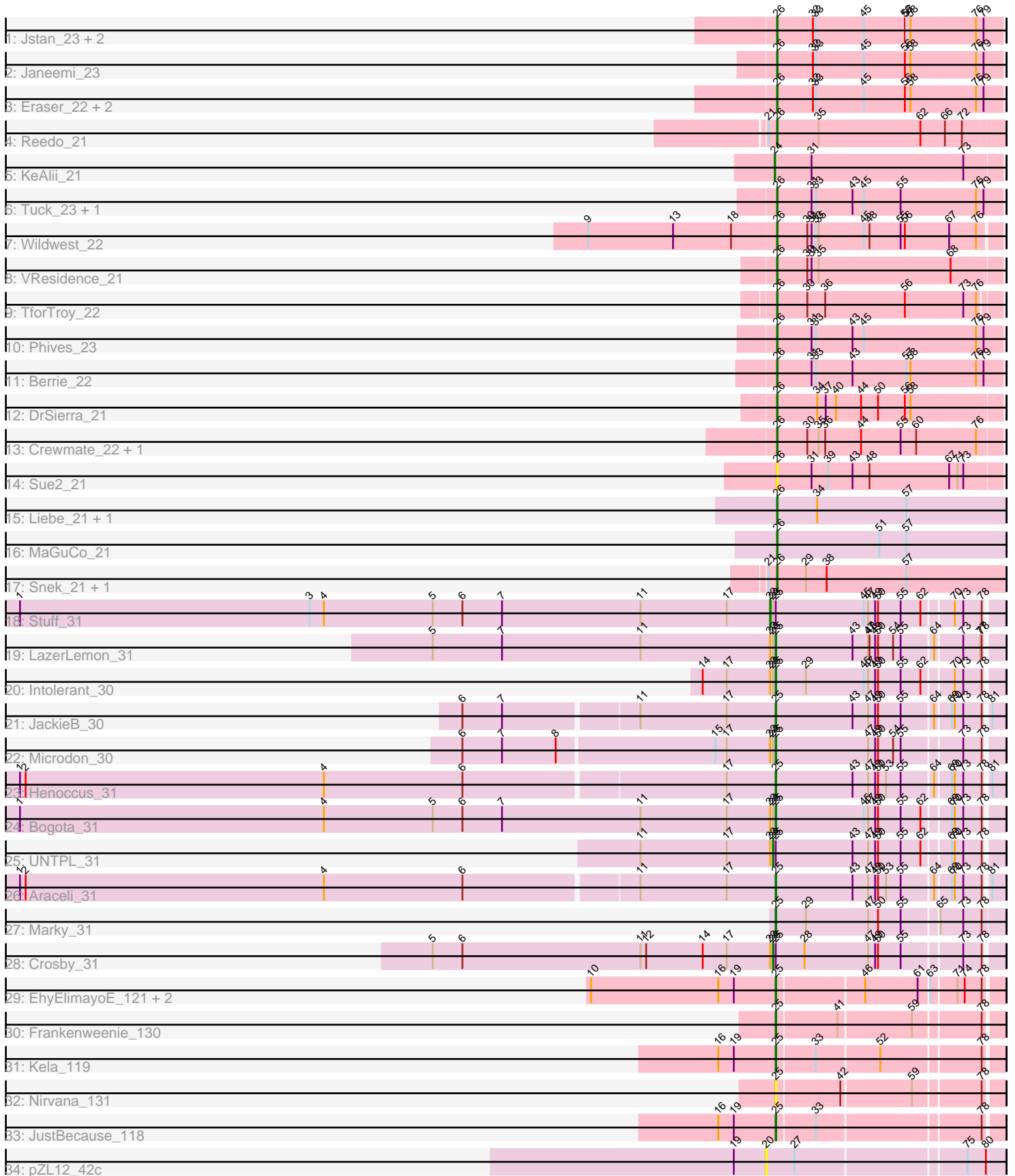


Pham 171574



Note: Tracks are now grouped by subcluster and scaled. Switching in subcluster is indicated by changes in track color. Track scale is now set by default to display the region 30 bp upstream of start 1 to 30 bp downstream of the last possible start. If this default region is judged to be packed too tightly with annotated starts, the track will be further scaled to only show that region of the ORF with annotated starts. This action will be indicated by adding "Zoomed" to the title. For starts, yellow indicates the location of called starts comprised solely of Glimmer/GeneMark auto-annotations, green indicates the location of called starts with at least 1 manual gene annotation.

Pham 171574 Report

This analysis was run 07/10/24 on database version 566.

WARNING: Pham size does not match number of genes in report. Either unphamerated genes have been added (by you) or starterator has removed genes due to invalid start codon.

Pham number 171574 has 44 members, 5 are drafts.

Phages represented in each track:

- Track 1 : Jstan_23, Asa16_22, Niobe_22
- Track 2 : Janeemi_23
- Track 3 : Eraser_22, Elezi_22, London_22
- Track 4 : Reedo_21
- Track 5 : KeAlii_21
- Track 6 : Tuck_23, Community_22
- Track 7 : Wildwest_22
- Track 8 : VResidence_21
- Track 9 : TforTroy_22
- Track 10 : Phives_23
- Track 11 : Berrie_22
- Track 12 : DrSierra_21
- Track 13 : Crewmate_22, ObiToo_21
- Track 14 : Sue2_21
- Track 15 : Liebe_21, Maureen_21
- Track 16 : MaGuCo_21
- Track 17 : Snek_21, Tweety19_21
- Track 18 : Stuff_31
- Track 19 : LazerLemon_31
- Track 20 : Intolerant_30
- Track 21 : JackieB_30
- Track 22 : Microdon_30
- Track 23 : Henoccus_31
- Track 24 : Bogota_31
- Track 25 : UNTPL_31
- Track 26 : Araceli_31
- Track 27 : Marky_31
- Track 28 : Crosby_31
- Track 29 : EhyElimayoE_121, Kradal_120, Satis_120
- Track 30 : Frankenweenie_130
- Track 31 : Kela_119
- Track 32 : Nirvana_131
- Track 33 : JustBecause_118

- Track 34 : pZL12_42c

Summary of Final Annotations (See graph section above for start numbers):

The start number called the most often in the published annotations is 26, it was called in 21 of the 39 non-draft genes in the pham.

Genes that call this "Most Annotated" start:

- Asa16_22, Berrie_22, Community_22, Crewmate_22, DrSierra_21, Elezi_22, Eraser_22, Janeemi_23, Jstan_23, Liebe_21, London_22, MaGuCo_21, Maureen_21, Niobe_22, ObiToo_21, Phives_23, Reedo_21, Snek_21, Sue2_21, TforTroy_22, Tuck_23, Tweety19_21, VResidence_21, Wildwest_22,

Genes that have the "Most Annotated" start but do not call it:

-

Genes that do not have the "Most Annotated" start:

- Araceli_31, Bogota_31, Crosby_31, EhyElimayoE_121, Frankenweenie_130, Henoccus_31, Intolerant_30, JackieB_30, JustBecause_118, KeAlii_21, Kela_119, Kradal_120, LazerLemon_31, Marky_31, Microdon_30, Nirvana_131, Satis_120, Stuff_31, UNTPL_31, pZL12_42c,

Summary by start number:

Start 20:

- Found in 1 of 44 (2.3%) of genes in pham
- No Manual Annotations of this start.
- Called 100.0% of time when present
- Phage (with cluster) where this start called: pZL12_42c (singleton),

Start 22:

- Found in 7 of 44 (15.9%) of genes in pham
- Manual Annotations of this start: 1 of 39
- Called 14.3% of time when present
- Phage (with cluster) where this start called: Stuff_31 (BH),

Start 23:

- Found in 7 of 44 (15.9%) of genes in pham
- Manual Annotations of this start: 2 of 39
- Called 28.6% of time when present
- Phage (with cluster) where this start called: Crosby_31 (BH), UNTPL_31 (BH),

Start 24:

- Found in 1 of 44 (2.3%) of genes in pham
- Manual Annotations of this start: 1 of 39
- Called 100.0% of time when present
- Phage (with cluster) where this start called: KeAlii_21 (AZ1),

Start 25:

- Found in 18 of 44 (40.9%) of genes in pham

- Manual Annotations of this start: 14 of 39
- Called 83.3% of time when present
- Phage (with cluster) where this start called: Araceli_31 (BH), Bogota_31 (BH), EhyElimayoE_121 (BM), Frankenweenie_130 (BM), Henoccus_31 (BH), Intolerant_30 (BH), JackieB_30 (BH), JustBecause_118 (BM), Kela_119 (BM), Kradal_120 (BM), LazerLemon_31 (BH), Marky_31 (BH), Microdon_30 (BH), Nirvana_131 (BM), Satis_120 (BM),

Start 26:

- Found in 24 of 44 (54.5%) of genes in pham
- Manual Annotations of this start: 21 of 39
- Called 100.0% of time when present
- Phage (with cluster) where this start called: Asa16_22 (AZ1), Berrie_22 (AZ1), Community_22 (AZ1), Crewmate_22 (AZ1), DrSierra_21 (AZ1), Elezi_22 (AZ1), Eraser_22 (AZ1), Janeemi_23 (AZ1), Jstan_23 (AZ1), Liebe_21 (AZ2), London_22 (AZ1), MaGuCo_21 (AZ2), Maureen_21 (AZ2), Niobe_22 (AZ1), ObiToo_21 (AZ1), Phives_23 (AZ1), Reedo_21 (AZ1), Sneak_21 (AZ3), Sue2_21 (AZ1), TforTroy_22 (AZ1), Tuck_23 (AZ1), Tweety19_21 (AZ3), VResidence_21 (AZ1), Wildwest_22 (AZ1),

Summary by clusters:

There are 6 clusters represented in this pham: singleton, BM, BH, AZ1, AZ2, AZ3,

Info for manual annotations of cluster AZ1:

- Start number 24 was manually annotated 1 time for cluster AZ1.
- Start number 26 was manually annotated 16 times for cluster AZ1.

Info for manual annotations of cluster AZ2:

- Start number 26 was manually annotated 3 times for cluster AZ2.

Info for manual annotations of cluster AZ3:

- Start number 26 was manually annotated 2 times for cluster AZ3.

Info for manual annotations of cluster BH:

- Start number 22 was manually annotated 1 time for cluster BH.
- Start number 23 was manually annotated 2 times for cluster BH.
- Start number 25 was manually annotated 8 times for cluster BH.

Info for manual annotations of cluster BM:

- Start number 25 was manually annotated 6 times for cluster BM.

Gene Information:

Gene: Araceli_31 Start: 26097, Stop: 26549, Start Num: 25

Candidate Starts for Araceli_31:

(1, 24528), (2, 24540), (4, 25173), (6, 25461), (11, 25818), (17, 25998), (Start: 25 @26097 has 14 MA's), (43, 26259), (47, 26292), (49, 26307), (50, 26313), (53, 26328), (55, 26358), (64, 26421), (69, 26451), (70, 26457), (73, 26475), (78, 26514), (81, 26523),

Gene: Asa16_22 Start: 19280, Stop: 19747, Start Num: 26

Candidate Starts for Asa16_22:

(Start: 26 @19280 has 21 MA's), (32, 19355), (33, 19361), (45, 19457), (56, 19544), (57, 19547), (58, 19556), (76, 19694), (79, 19709),

Gene: Berrie_22 Start: 19835, Stop: 20302, Start Num: 26

Candidate Starts for Berrie_22:

(Start: 26 @19835 has 21 MA's), (31, 19907), (33, 19916), (43, 19988), (57, 20102), (58, 20111), (76, 20249), (79, 20264),

Gene: Bogota_31 Start: 26235, Stop: 26687, Start Num: 25

Candidate Starts for Bogota_31:

(1, 24645), (4, 25290), (5, 25521), (6, 25578), (7, 25662), (11, 25953), (17, 26136), (Start: 22 @26226 has 1 MA's), (Start: 23 @26232 has 2 MA's), (Start: 25 @26235 has 14 MA's), (45, 26421), (47, 26430), (49, 26445), (50, 26451), (55, 26496), (62, 26538), (69, 26589), (70, 26595), (73, 26613), (78, 26652),

Gene: Community_22 Start: 20920, Stop: 21387, Start Num: 26

Candidate Starts for Community_22:

(Start: 26 @20920 has 21 MA's), (31, 20992), (33, 21001), (43, 21073), (45, 21097), (55, 21175), (76, 21334), (79, 21349),

Gene: Crewmate_22 Start: 17739, Stop: 18200, Start Num: 26

Candidate Starts for Crewmate_22:

(Start: 26 @17739 has 21 MA's), (30, 17802), (35, 17826), (36, 17838), (44, 17907), (55, 17991), (60, 18024), (76, 18150),

Gene: Crosby_31 Start: 26221, Stop: 26676, Start Num: 23

Candidate Starts for Crosby_31:

(5, 25510), (6, 25570), (11, 25942), (12, 25954), (14, 26074), (17, 26125), (Start: 22 @26215 has 1 MA's), (Start: 23 @26221 has 2 MA's), (Start: 25 @26224 has 14 MA's), (28, 26284), (47, 26419), (49, 26434), (50, 26440), (55, 26485), (73, 26602), (78, 26641),

Gene: DrSierra_21 Start: 17797, Stop: 18261, Start Num: 26

Candidate Starts for DrSierra_21:

(Start: 26 @17797 has 21 MA's), (34, 17881), (37, 17899), (40, 17917), (44, 17968), (50, 18004), (56, 18061), (58, 18073),

Gene: EhyElimayoE_121 Start: 79011, Stop: 79445, Start Num: 25

Candidate Starts for EhyElimayoE_121:

(10, 78627), (16, 78894), (19, 78927), (Start: 25 @79011 has 14 MA's), (46, 79185), (61, 79293), (63, 79311), (71, 79359), (74, 79374), (78, 79410),

Gene: Elezi_22 Start: 19281, Stop: 19748, Start Num: 26

Candidate Starts for Elezi_22:

(Start: 26 @19281 has 21 MA's), (32, 19356), (33, 19362), (45, 19458), (56, 19545), (58, 19557), (76, 19695), (79, 19710),

Gene: Eraser_22 Start: 19281, Stop: 19748, Start Num: 26

Candidate Starts for Eraser_22:

(Start: 26 @19281 has 21 MA's), (32, 19356), (33, 19362), (45, 19458), (56, 19545), (58, 19557), (76, 19695), (79, 19710),

Gene: Frankenweenie_130 Start: 83927, Stop: 84361, Start Num: 25

Candidate Starts for Frankenweenie_130:

(Start: 25 @83927 has 14 MA's), (41, 84050), (59, 84197), (78, 84326),

Gene: Henococcus_31 Start: 26107, Stop: 26559, Start Num: 25

Candidate Starts for Henococcus_31:

(1, 24538), (2, 24550), (4, 25183), (6, 25471), (17, 26008), (Start: 25 @26107 has 14 MA's), (43, 26269), (47, 26302), (49, 26317), (50, 26323), (53, 26338), (55, 26368), (64, 26431), (69, 26461), (70, 26467), (73, 26485), (78, 26524), (81, 26533),

Gene: Intolerant_30 Start: 26098, Stop: 26550, Start Num: 25

Candidate Starts for Intolerant_30:

(14, 25948), (17, 25999), (Start: 22 @26089 has 1 MA's), (Start: 23 @26095 has 2 MA's), (Start: 25 @26098 has 14 MA's), (29, 26161), (45, 26284), (47, 26293), (49, 26308), (50, 26314), (55, 26359), (62, 26401), (70, 26458), (73, 26476), (78, 26515),

Gene: JackieB_30 Start: 25962, Stop: 26414, Start Num: 25

Candidate Starts for JackieB_30:

(6, 25326), (7, 25410), (11, 25683), (17, 25863), (Start: 25 @25962 has 14 MA's), (43, 26124), (47, 26157), (49, 26172), (50, 26178), (55, 26223), (64, 26286), (69, 26316), (70, 26322), (73, 26340), (78, 26379), (81, 26388),

Gene: Janeemi_23 Start: 20928, Stop: 21395, Start Num: 26

Candidate Starts for Janeemi_23:

(Start: 26 @20928 has 21 MA's), (32, 21003), (33, 21009), (45, 21105), (56, 21192), (58, 21204), (76, 21342), (79, 21357),

Gene: Jstan_23 Start: 19281, Stop: 19748, Start Num: 26

Candidate Starts for Jstan_23:

(Start: 26 @19281 has 21 MA's), (32, 19356), (33, 19362), (45, 19458), (56, 19545), (57, 19548), (58, 19557), (76, 19695), (79, 19710),

Gene: JustBecause_118 Start: 78079, Stop: 78513, Start Num: 25

Candidate Starts for JustBecause_118:

(16, 77962), (19, 77995), (Start: 25 @78079 has 14 MA's), (33, 78157), (78, 78478),

Gene: KeAlii_21 Start: 17311, Stop: 17772, Start Num: 24

Candidate Starts for KeAlii_21:

(Start: 24 @17311 has 1 MA's), (31, 17383), (73, 17695),

Gene: Kela_119 Start: 77959, Stop: 78393, Start Num: 25

Candidate Starts for Kela_119:

(16, 77842), (19, 77875), (Start: 25 @77959 has 14 MA's), (33, 78037), (52, 78163), (78, 78358),

Gene: Kradal_120 Start: 79008, Stop: 79442, Start Num: 25

Candidate Starts for Kradal_120:

(10, 78624), (16, 78891), (19, 78924), (Start: 25 @79008 has 14 MA's), (46, 79182), (61, 79290), (63, 79308), (71, 79356), (74, 79371), (78, 79407),

Gene: LazerLemon_31 Start: 26614, Stop: 27063, Start Num: 25

Candidate Starts for LazerLemon_31:

(5, 25897), (7, 26041), (11, 26332), (Start: 22 @26605 has 1 MA's), (Start: 23 @26611 has 2 MA's), (Start: 25 @26614 has 14 MA's), (43, 26776), (47, 26809), (48, 26812), (49, 26824), (50, 26830), (54, 26860), (55, 26875), (64, 26938), (73, 26992), (77, 27028), (78, 27031),

Gene: Liebe_21 Start: 18736, Stop: 19206, Start Num: 26

Candidate Starts for Liebe_21:

(Start: 26 @18736 has 21 MA's), (34, 18820), (57, 19000),

Gene: London_22 Start: 19281, Stop: 19748, Start Num: 26

Candidate Starts for London_22:

(Start: 26 @19281 has 21 MA's), (32, 19356), (33, 19362), (45, 19458), (56, 19545), (58, 19557), (76, 19695), (79, 19710),

Gene: MaGuCo_21 Start: 18669, Stop: 19139, Start Num: 26

Candidate Starts for MaGuCo_21:

(Start: 26 @18669 has 21 MA's), (51, 18876), (57, 18933),

Gene: Marky_31 Start: 25965, Stop: 26429, Start Num: 25

Candidate Starts for Marky_31:

(Start: 25 @25965 has 14 MA's), (29, 26028), (47, 26160), (50, 26181), (55, 26226), (65, 26295), (73, 26343), (78, 26382),

Gene: Maureen_21 Start: 18736, Stop: 19206, Start Num: 26

Candidate Starts for Maureen_21:

(Start: 26 @18736 has 21 MA's), (34, 18820), (57, 19000),

Gene: Microdon_30 Start: 25921, Stop: 26373, Start Num: 25

Candidate Starts for Microdon_30:

(6, 25276), (7, 25360), (8, 25474), (15, 25798), (17, 25822), (Start: 22 @25912 has 1 MA's), (Start: 23 @25918 has 2 MA's), (Start: 25 @25921 has 14 MA's), (47, 26116), (49, 26131), (50, 26137), (54, 26167), (55, 26182), (73, 26299), (78, 26338),

Gene: Niobe_22 Start: 19281, Stop: 19748, Start Num: 26

Candidate Starts for Niobe_22:

(Start: 26 @19281 has 21 MA's), (32, 19356), (33, 19362), (45, 19458), (56, 19545), (57, 19548), (58, 19557), (76, 19695), (79, 19710),

Gene: Nirvana_131 Start: 82324, Stop: 82758, Start Num: 25

Candidate Starts for Nirvana_131:

(Start: 25 @82324 has 14 MA's), (42, 82453), (59, 82594), (78, 82723),

Gene: ObiToo_21 Start: 17476, Stop: 17937, Start Num: 26

Candidate Starts for ObiToo_21:

(Start: 26 @17476 has 21 MA's), (30, 17539), (35, 17563), (36, 17575), (44, 17644), (55, 17728), (60, 17761), (76, 17887),

Gene: Phives_23 Start: 20757, Stop: 21224, Start Num: 26

Candidate Starts for Phives_23:

(Start: 26 @20757 has 21 MA's), (31, 20829), (33, 20838), (43, 20910), (45, 20934), (76, 21171), (79, 21186),

Gene: Reedo_21 Start: 17318, Stop: 17776, Start Num: 26

Candidate Starts for Reedo_21:

(21, 17300), (Start: 26 @17318 has 21 MA's), (35, 17405), (62, 17612), (66, 17663), (72, 17699),

Gene: Satis_120 Start: 79004, Stop: 79438, Start Num: 25

Candidate Starts for Satis_120:

(10, 78620), (16, 78887), (19, 78920), (Start: 25 @79004 has 14 MA's), (46, 79178), (61, 79286), (63, 79304), (71, 79352), (74, 79367), (78, 79403),

Gene: Snek_21 Start: 16347, Stop: 16814, Start Num: 26

Candidate Starts for Snek_21:

(21, 16329), (Start: 26 @16347 has 21 MA's), (29, 16407), (38, 16449), (57, 16611),

Gene: Stuff_31 Start: 26387, Stop: 26848, Start Num: 22

Candidate Starts for Stuff_31:

(1, 24806), (3, 25421), (4, 25451), (5, 25682), (6, 25739), (7, 25823), (11, 26114), (17, 26297), (Start: 22 @26387 has 1 MA's), (Start: 23 @26393 has 2 MA's), (Start: 25 @26396 has 14 MA's), (45, 26582), (47, 26591), (49, 26606), (50, 26612), (55, 26657), (62, 26699), (70, 26756), (73, 26774), (78, 26813),

Gene: Sue2_21 Start: 17971, Stop: 18432, Start Num: 26

Candidate Starts for Sue2_21:

(Start: 26 @17971 has 21 MA's), (31, 18043), (39, 18076), (43, 18124), (48, 18160), (67, 18328), (71, 18346), (73, 18358),

Gene: TforTroy_22 Start: 19431, Stop: 19886, Start Num: 26

Candidate Starts for TforTroy_22:

(Start: 26 @19431 has 21 MA's), (30, 19494), (36, 19530), (56, 19692), (73, 19815), (76, 19842),

Gene: Tuck_23 Start: 20900, Stop: 21367, Start Num: 26

Candidate Starts for Tuck_23:

(Start: 26 @20900 has 21 MA's), (31, 20972), (33, 20981), (43, 21053), (45, 21077), (55, 21155), (76, 21314), (79, 21329),

Gene: Tweety19_21 Start: 16346, Stop: 16813, Start Num: 26

Candidate Starts for Tweety19_21:

(21, 16328), (Start: 26 @16346 has 21 MA's), (29, 16406), (38, 16448), (57, 16610),

Gene: UNTPL_31 Start: 26213, Stop: 26668, Start Num: 23

Candidate Starts for UNTPL_31:

(11, 25934), (17, 26117), (Start: 22 @26207 has 1 MA's), (Start: 23 @26213 has 2 MA's), (Start: 25 @26216 has 14 MA's), (43, 26378), (47, 26411), (49, 26426), (50, 26432), (55, 26477), (62, 26519), (69, 26570), (70, 26576), (73, 26594), (78, 26633),

Gene: VResidence_21 Start: 17376, Stop: 17837, Start Num: 26

Candidate Starts for VResidence_21:

(Start: 26 @17376 has 21 MA's), (30, 17439), (31, 17448), (35, 17463), (68, 17736),

Gene: Wildwest_22 Start: 18728, Stop: 19186, Start Num: 26

Candidate Starts for Wildwest_22:

(9, 18344), (13, 18524), (18, 18647), (Start: 26 @18728 has 21 MA's), (30, 18791), (31, 18800), (33, 18809), (35, 18815), (45, 18905), (48, 18917), (55, 18983), (56, 18992), (67, 19085), (76, 19142),

Gene: pZL12_42c Start: 31108, Stop: 30641, Start Num: 20

Candidate Starts for pZL12_42c:

(19, 31177), (20, 31108), (27, 31048), (75, 30715), (80, 30676),