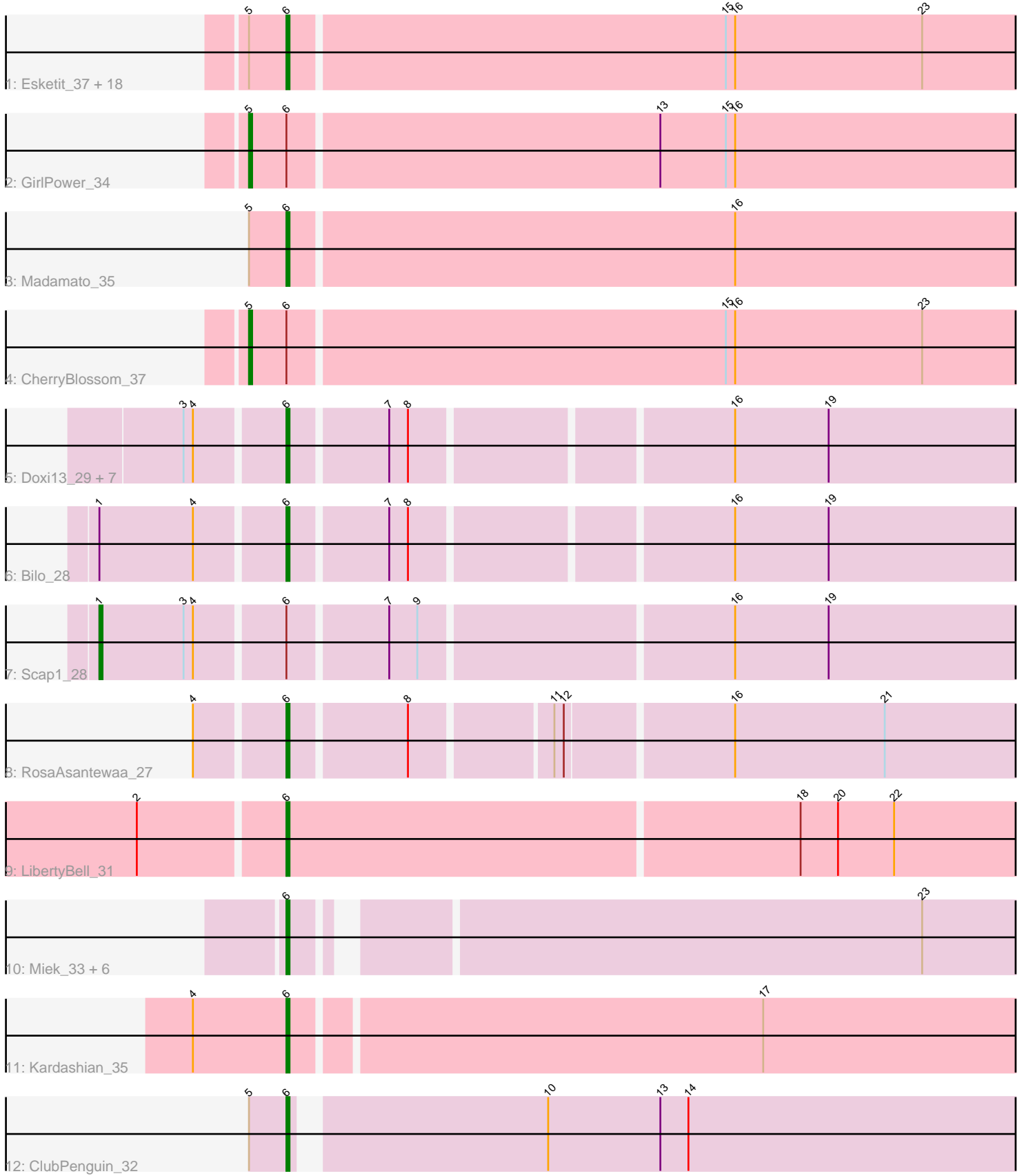


Pham 171590



Note: Tracks are now grouped by subcluster and scaled. Switching in subcluster is indicated by changes in track color. Track scale is now set by default to display the region 30 bp upstream of start 1 to 30 bp downstream of the last possible start. If this default region is judged to be packed too tightly with annotated starts, the track will be further scaled to only show that region of the ORF with annotated starts. This action will be indicated by adding "Zoomed" to the title. For starts, yellow indicates the location of called starts comprised solely of Glimmer/GeneMark auto-annotations, green indicates the location of called starts with at least 1 manual gene annotation.

## Pham 171590 Report

This analysis was run 07/10/24 on database version 566.

Pham number 171590 has 43 members, 2 are drafts.

Phages represented in each track:

- Track 1 : Esketit\_37, TonyStarch\_36, Spectropatronm\_37, Indigenous\_37, Soshi\_36, Maya\_37, Jaylociraptor\_37, Meibysrarus\_36, OlympicHelado\_37, DrGrey\_36, Rima\_37, Namu\_37, FrodoSwaggins\_37, IceWarrior\_36, TieDye\_36, Hoshi\_37, FidgetOrca\_37, TaidaOne\_37, Popy\_37
- Track 2 : GirlPower\_34
- Track 3 : Madamato\_35
- Track 4 : CherryBlossom\_37
- Track 5 : Doxi13\_29, Annihilus\_29, GoblinVoyage\_29, HotFries\_27, RavenPuff\_28, SheRa\_28, PherryCruz\_28, Moozy\_29
- Track 6 : Bilo\_28
- Track 7 : Scap1\_28
- Track 8 : RosaAsantewaa\_27
- Track 9 : LibertyBell\_31
- Track 10 : Miek\_33, FromIndy\_34, CricKo\_34, SendItCS\_32, Regigigas\_35, Rainydai\_34, Thiqqums\_34
- Track 11 : Kardashian\_35
- Track 12 : ClubPenguin\_32

### ***Summary of Final Annotations (See graph section above for start numbers):***

The start number called the most often in the published annotations is 6, it was called in 38 of the 41 non-draft genes in the pham.

Genes that call this "Most Annotated" start:

- Annihilus\_29, Bilo\_28, ClubPenguin\_32, CricKo\_34, Doxi13\_29, DrGrey\_36, Esketit\_37, FidgetOrca\_37, FrodoSwaggins\_37, FromIndy\_34, GoblinVoyage\_29, Hoshi\_37, HotFries\_27, IceWarrior\_36, Indigenous\_37, Jaylociraptor\_37, Kardashian\_35, LibertyBell\_31, Madamato\_35, Maya\_37, Meibysrarus\_36, Miek\_33, Moozy\_29, Namu\_37, OlympicHelado\_37, PherryCruz\_28, Popy\_37, Rainydai\_34, RavenPuff\_28, Regigigas\_35, Rima\_37, RosaAsantewaa\_27, SendItCS\_32, SheRa\_28, Soshi\_36, Spectropatronm\_37, TaidaOne\_37, Thiqqums\_34, TieDye\_36, TonyStarch\_36,

Genes that have the "Most Annotated" start but do not call it:

- CherryBlossom\_37, GirlPower\_34, Scap1\_28,

Genes that do not have the "Most Annotated" start:

- 

### Summary by start number:

Start 1:

- Found in 2 of 43 ( 4.7% ) of genes in pham
- Manual Annotations of this start: 1 of 41
- Called 50.0% of time when present
- Phage (with cluster) where this start called: Scap1\_28 (BI2),

Start 5:

- Found in 23 of 43 ( 53.5% ) of genes in pham
- Manual Annotations of this start: 2 of 41
- Called 8.7% of time when present
- Phage (with cluster) where this start called: CherryBlossom\_37 (BI1), GirlPower\_34 (BI1),

Start 6:

- Found in 43 of 43 ( 100.0% ) of genes in pham
- Manual Annotations of this start: 38 of 41
- Called 93.0% of time when present
- Phage (with cluster) where this start called: Annihilus\_29 (BI2), Bilo\_28 (BI2), ClubPenguin\_32 (BI7), CricKo\_34 (BI4), Doxi13\_29 (BI2), DrGrey\_36 (BI1), Esketit\_37 (BI1), FidgetOrca\_37 (BI1), FrodoSwaggins\_37 (BI1), FromIndy\_34 (BI4), GoblinVoyage\_29 (BI2), Hoshi\_37 (BI1), HotFries\_27 (BI2), IceWarrior\_36 (BI1), Indigenous\_37 (BI1), Jaylociraptor\_37 (BI1), Kardashian\_35 (BI6), LibertyBell\_31 (BI3), Madamato\_35 (BI1), Maya\_37 (BI1), Meibysrarus\_36 (BI1), Miek\_33 (BI4), Moozy\_29 (BI2), Namu\_37 (BI1), OlympicHelado\_37 (BI1), PherryCruz\_28 (BI2), Popy\_37 (BI1), Rainydai\_34 (BI4), RavenPuff\_28 (BI2), Regigigas\_35 (BI4), Rima\_37 (BI1), RosaAsantewaa\_27 (BI2), SendItCS\_32 (BI4), SheRa\_28 (BI2), Soshi\_36 (BI1), Spectropatronm\_37 (BI1), TaidaOne\_37 (BI1), Thiqqums\_34 (BI4), TieDye\_36 (BI1), TonyStarch\_36 (BI1),

### Summary by clusters:

There are 6 clusters represented in this pham: BI6, BI7, BI4, BI2, BI3, BI1,

Info for manual annotations of cluster BI1:

- Start number 5 was manually annotated 2 times for cluster BI1.
- Start number 6 was manually annotated 20 times for cluster BI1.

Info for manual annotations of cluster BI2:

- Start number 1 was manually annotated 1 time for cluster BI2.
- Start number 6 was manually annotated 10 times for cluster BI2.

Info for manual annotations of cluster BI3:

- Start number 6 was manually annotated 1 time for cluster BI3.

Info for manual annotations of cluster BI4:

- Start number 6 was manually annotated 5 times for cluster BI4.

Info for manual annotations of cluster BI6:

- Start number 6 was manually annotated 1 time for cluster BI6.

Info for manual annotations of cluster BI7:

- Start number 6 was manually annotated 1 time for cluster BI7.

### **Gene Information:**

Gene: Annihilus\_29 Start: 23803, Stop: 24042, Start Num: 6

Candidate Starts for Annihilus\_29:

(3, 23773), (4, 23776), (Start: 6 @23803 has 38 MA's), (7, 23833), (8, 23839), (16, 23935), (19, 23965),

Gene: Bilo\_28 Start: 24017, Stop: 24256, Start Num: 6

Candidate Starts for Bilo\_28:

(Start: 1 @23960 has 1 MA's), (4, 23990), (Start: 6 @24017 has 38 MA's), (7, 24047), (8, 24053), (16, 24149), (19, 24179),

Gene: CherryBlossom\_37 Start: 27952, Stop: 28212, Start Num: 5

Candidate Starts for CherryBlossom\_37:

(Start: 5 @27952 has 2 MA's), (Start: 6 @27964 has 38 MA's), (15, 28102), (16, 28105), (23, 28165),

Gene: ClubPenguin\_32 Start: 26523, Stop: 26768, Start Num: 6

Candidate Starts for ClubPenguin\_32:

(Start: 5 @26511 has 2 MA's), (Start: 6 @26523 has 38 MA's), (10, 26598), (13, 26634), (14, 26643),

Gene: CricKo\_34 Start: 26745, Stop: 26987, Start Num: 6

Candidate Starts for CricKo\_34:

(Start: 6 @26745 has 38 MA's), (23, 26934),

Gene: Doxi13\_29 Start: 23766, Stop: 24005, Start Num: 6

Candidate Starts for Doxi13\_29:

(3, 23736), (4, 23739), (Start: 6 @23766 has 38 MA's), (7, 23796), (8, 23802), (16, 23898), (19, 23928),

Gene: DrGrey\_36 Start: 28304, Stop: 28552, Start Num: 6

Candidate Starts for DrGrey\_36:

(Start: 5 @28292 has 2 MA's), (Start: 6 @28304 has 38 MA's), (15, 28442), (16, 28445), (23, 28505),

Gene: Esketit\_37 Start: 28039, Stop: 28287, Start Num: 6

Candidate Starts for Esketit\_37:

(Start: 5 @28027 has 2 MA's), (Start: 6 @28039 has 38 MA's), (15, 28177), (16, 28180), (23, 28240),

Gene: FidgetOrca\_37 Start: 28044, Stop: 28292, Start Num: 6

Candidate Starts for FidgetOrca\_37:

(Start: 5 @28032 has 2 MA's), (Start: 6 @28044 has 38 MA's), (15, 28182), (16, 28185), (23, 28245),

Gene: FrodoSwaggins\_37 Start: 28698, Stop: 28946, Start Num: 6

Candidate Starts for FrodoSwaggins\_37:

(Start: 5 @28686 has 2 MA's), (Start: 6 @28698 has 38 MA's), (15, 28836), (16, 28839), (23, 28899),

Gene: FromIndy\_34 Start: 26349, Stop: 26591, Start Num: 6

Candidate Starts for FromIndy\_34:

(Start: 6 @26349 has 38 MA's), (23, 26538),

Gene: GirlPower\_34 Start: 29017, Stop: 29277, Start Num: 5

Candidate Starts for GirlPower\_34:

(Start: 5 @29017 has 2 MA's), (Start: 6 @29029 has 38 MA's), (13, 29146), (15, 29167), (16, 29170),

Gene: GoblinVoyage\_29 Start: 23766, Stop: 24005, Start Num: 6

Candidate Starts for GoblinVoyage\_29:

(3, 23736), (4, 23739), (Start: 6 @23766 has 38 MA's), (7, 23796), (8, 23802), (16, 23898), (19, 23928),

Gene: Hoshi\_37 Start: 28039, Stop: 28287, Start Num: 6

Candidate Starts for Hoshi\_37:

(Start: 5 @28027 has 2 MA's), (Start: 6 @28039 has 38 MA's), (15, 28177), (16, 28180), (23, 28240),

Gene: HotFries\_27 Start: 23496, Stop: 23735, Start Num: 6

Candidate Starts for HotFries\_27:

(3, 23466), (4, 23469), (Start: 6 @23496 has 38 MA's), (7, 23526), (8, 23532), (16, 23628), (19, 23658),

Gene: IceWarrior\_36 Start: 27739, Stop: 27987, Start Num: 6

Candidate Starts for IceWarrior\_36:

(Start: 5 @27727 has 2 MA's), (Start: 6 @27739 has 38 MA's), (15, 27877), (16, 27880), (23, 27940),

Gene: Indigenous\_37 Start: 28039, Stop: 28287, Start Num: 6

Candidate Starts for Indigenous\_37:

(Start: 5 @28027 has 2 MA's), (Start: 6 @28039 has 38 MA's), (15, 28177), (16, 28180), (23, 28240),

Gene: Jaylociraptor\_37 Start: 28039, Stop: 28287, Start Num: 6

Candidate Starts for Jaylociraptor\_37:

(Start: 5 @28027 has 2 MA's), (Start: 6 @28039 has 38 MA's), (15, 28177), (16, 28180), (23, 28240),

Gene: Kardashian\_35 Start: 27816, Stop: 28064, Start Num: 6

Candidate Starts for Kardashian\_35:

(4, 27786), (Start: 6 @27816 has 38 MA's), (17, 27963),

Gene: LibertyBell\_31 Start: 25601, Stop: 25855, Start Num: 6

Candidate Starts for LibertyBell\_31:

(2, 25556), (Start: 6 @25601 has 38 MA's), (18, 25763), (20, 25775), (22, 25793),

Gene: Madamoto\_35 Start: 27294, Stop: 27545, Start Num: 6

Candidate Starts for Madamoto\_35:

(Start: 5 @27282 has 2 MA's), (Start: 6 @27294 has 38 MA's), (16, 27435),

Gene: Maya\_37 Start: 28053, Stop: 28301, Start Num: 6

Candidate Starts for Maya\_37:

(Start: 5 @28041 has 2 MA's), (Start: 6 @28053 has 38 MA's), (15, 28191), (16, 28194), (23, 28254),

Gene: Meibysrarus\_36 Start: 27738, Stop: 27986, Start Num: 6

Candidate Starts for Meibysrarus\_36:

(Start: 5 @27726 has 2 MA's), (Start: 6 @27738 has 38 MA's), (15, 27876), (16, 27879), (23, 27939),

Gene: Miek\_33 Start: 26361, Stop: 26603, Start Num: 6

Candidate Starts for Miek\_33:

(Start: 6 @26361 has 38 MA's), (23, 26550),

Gene: Moozy\_29 Start: 23790, Stop: 24029, Start Num: 6

Candidate Starts for Moozy\_29:

(3, 23760), (4, 23763), (Start: 6 @23790 has 38 MA's), (7, 23820), (8, 23826), (16, 23922), (19, 23952),

Gene: Namo\_37 Start: 28045, Stop: 28293, Start Num: 6

Candidate Starts for Namo\_37:

(Start: 5 @28033 has 2 MA's), (Start: 6 @28045 has 38 MA's), (15, 28183), (16, 28186), (23, 28246),

Gene: OlympicHelado\_37 Start: 28045, Stop: 28293, Start Num: 6

Candidate Starts for OlympicHelado\_37:

(Start: 5 @28033 has 2 MA's), (Start: 6 @28045 has 38 MA's), (15, 28183), (16, 28186), (23, 28246),

Gene: PherryCruz\_28 Start: 23765, Stop: 24004, Start Num: 6

Candidate Starts for PherryCruz\_28:

(3, 23735), (4, 23738), (Start: 6 @23765 has 38 MA's), (7, 23795), (8, 23801), (16, 23897), (19, 23927),

Gene: Popy\_37 Start: 28698, Stop: 28946, Start Num: 6

Candidate Starts for Popy\_37:

(Start: 5 @28686 has 2 MA's), (Start: 6 @28698 has 38 MA's), (15, 28836), (16, 28839), (23, 28899),

Gene: Rainydai\_34 Start: 26745, Stop: 26987, Start Num: 6

Candidate Starts for Rainydai\_34:

(Start: 6 @26745 has 38 MA's), (23, 26934),

Gene: RavenPuff\_28 Start: 23765, Stop: 24004, Start Num: 6

Candidate Starts for RavenPuff\_28:

(3, 23735), (4, 23738), (Start: 6 @23765 has 38 MA's), (7, 23795), (8, 23801), (16, 23897), (19, 23927),

Gene: Regigigas\_35 Start: 26745, Stop: 26987, Start Num: 6

Candidate Starts for Regigigas\_35:

(Start: 6 @26745 has 38 MA's), (23, 26934),

Gene: Rima\_37 Start: 28045, Stop: 28293, Start Num: 6

Candidate Starts for Rima\_37:

(Start: 5 @28033 has 2 MA's), (Start: 6 @28045 has 38 MA's), (15, 28183), (16, 28186), (23, 28246),

Gene: RosaAsantewaa\_27 Start: 23272, Stop: 23511, Start Num: 6

Candidate Starts for RosaAsantewaa\_27:

(4, 23245), (Start: 6 @23272 has 38 MA's), (8, 23308), (11, 23350), (12, 23353), (16, 23404), (21, 23452),

Gene: Scap1\_28 Start: 23389, Stop: 23688, Start Num: 1

Candidate Starts for Scap1\_28:

(Start: 1 @23389 has 1 MA's), (3, 23416), (4, 23419), (Start: 6 @23446 has 38 MA's), (7, 23476), (9, 23485), (16, 23581), (19, 23611),

Gene: SendItCS\_32 Start: 26361, Stop: 26603, Start Num: 6

Candidate Starts for SendItCS\_32:

(Start: 6 @26361 has 38 MA's), (23, 26550),

Gene: SheRa\_28 Start: 23497, Stop: 23736, Start Num: 6

Candidate Starts for SheRa\_28:

(3, 23467), (4, 23470), (Start: 6 @23497 has 38 MA's), (7, 23527), (8, 23533), (16, 23629), (19, 23659),

Gene: Soshi\_36 Start: 28310, Stop: 28558, Start Num: 6

Candidate Starts for Soshi\_36:

(Start: 5 @28298 has 2 MA's), (Start: 6 @28310 has 38 MA's), (15, 28448), (16, 28451), (23, 28511),

Gene: Spectropatronm\_37 Start: 28039, Stop: 28287, Start Num: 6

Candidate Starts for Spectropatronm\_37:

(Start: 5 @28027 has 2 MA's), (Start: 6 @28039 has 38 MA's), (15, 28177), (16, 28180), (23, 28240),

Gene: TaidaOne\_37 Start: 28595, Stop: 28843, Start Num: 6

Candidate Starts for TaidaOne\_37:

(Start: 5 @28583 has 2 MA's), (Start: 6 @28595 has 38 MA's), (15, 28733), (16, 28736), (23, 28796),

Gene: Thiqqums\_34 Start: 26745, Stop: 26987, Start Num: 6

Candidate Starts for Thiqqums\_34:

(Start: 6 @26745 has 38 MA's), (23, 26934),

Gene: TieDye\_36 Start: 27639, Stop: 27887, Start Num: 6

Candidate Starts for TieDye\_36:

(Start: 5 @27627 has 2 MA's), (Start: 6 @27639 has 38 MA's), (15, 27777), (16, 27780), (23, 27840),

Gene: TonyStarch\_36 Start: 27744, Stop: 27992, Start Num: 6

Candidate Starts for TonyStarch\_36:

(Start: 5 @27732 has 2 MA's), (Start: 6 @27744 has 38 MA's), (15, 27882), (16, 27885), (23, 27945),