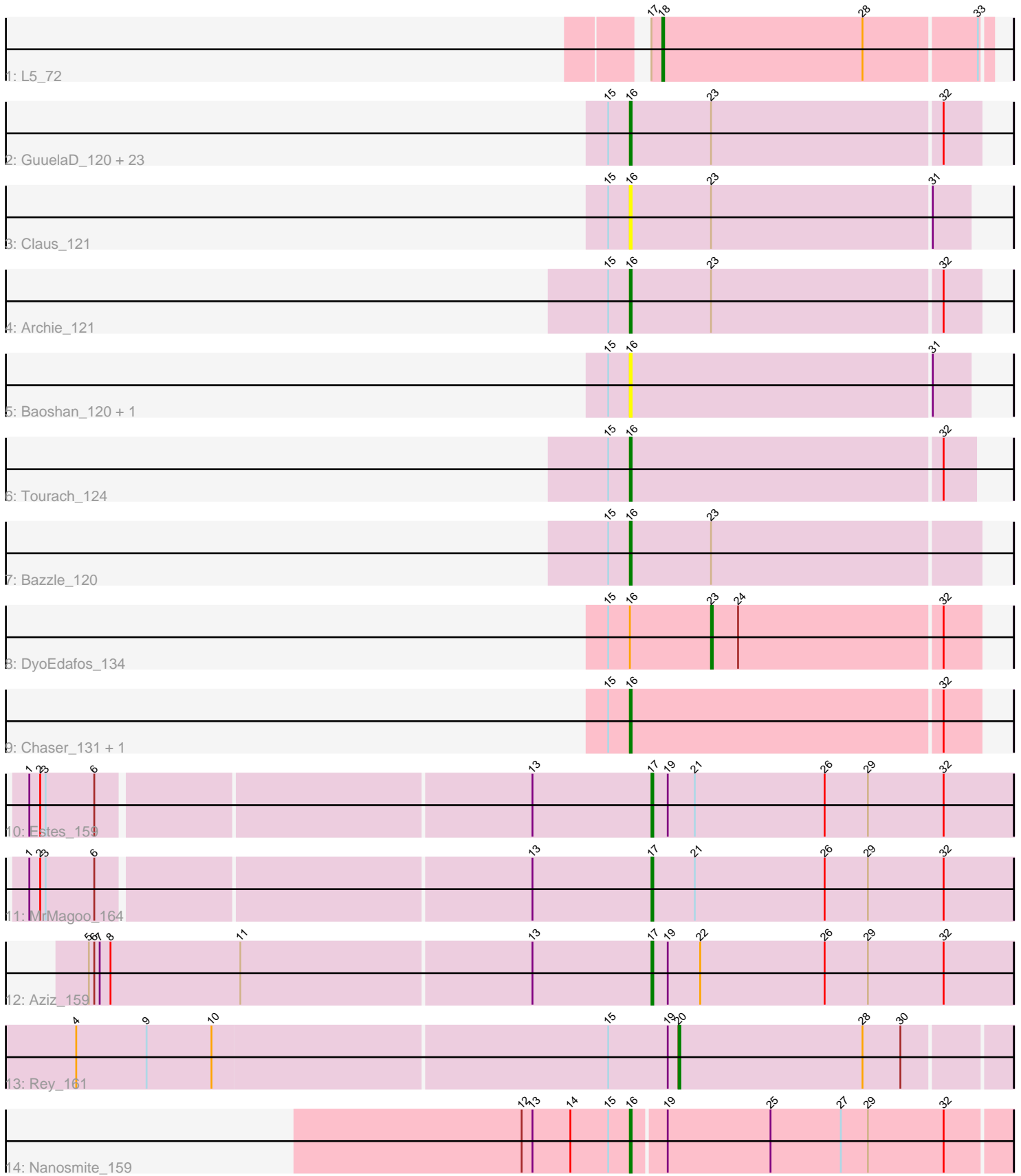


Pham 171611



1: L5_72

2: GuuelaD_120 + 23

3: Claus_121

4: Archie_121

5: Baoshan_120 + 1

6: Tourach_124

7: Bazzle_120

8: DyoEdafos_134

9: Chaser_131 + 1

10: Estes_159

11: MrMagoo_164

12: Aziz_159

13: Rey_161

14: Nanosmite_159

Note: Tracks are now grouped by subcluster and scaled. Switching in subcluster is indicated by changes in track color. Track scale is now set by default to display the region 30 bp upstream of start 1 to 30 bp downstream of the last possible start. If this default region is judged to be packed too tightly with annotated starts, the track will be further scaled to only show that region of the ORF with annotated starts. This action will be indicated by adding "Zoomed" to the title. For starts, yellow indicates the location of called starts comprised solely of Glimmer/GeneMark auto-annotations, green indicates the location of called starts with at least 1 manual gene annotation.

Pham 171611 Report

This analysis was run 07/10/24 on database version 566.

Pham number 171611 has 39 members, 4 are drafts.

Phages represented in each track:

- Track 1 : L5_72
- Track 2 : GuuelaD_120, MkaliMitinis3_125, BigCheese_122, Miley16_123, Lewan_125, Faith1_121, Kahlid_122, Winky_123, Wigglewiggle_123, Loadrie_124, Gardann_122, LilDestine_119, Gabriela_122, Breezona_123, Wilder_123, Itos_123, Nicholasp3_123, Finemlucis_121, DrSeegs_121, Crossroads_125, BobsGarage_122, Vetrix_122, Zakai_125, Netyap_121
- Track 3 : Claus_121
- Track 4 : Archie_121
- Track 5 : Baoshan_120, ZhongYanYuan_120
- Track 6 : Tourach_124
- Track 7 : Bazzle_120
- Track 8 : DyoEdafos_134
- Track 9 : Chaser_131, Douge_133
- Track 10 : Estes_159
- Track 11 : MrMagoo_164
- Track 12 : Aziz_159
- Track 13 : Rey_161
- Track 14 : Nanosmite_159

Summary of Final Annotations (See graph section above for start numbers):

The start number called the most often in the published annotations is 16, it was called in 29 of the 35 non-draft genes in the pham.

Genes that call this "Most Annotated" start:

- Archie_121, Baoshan_120, Bazzle_120, BigCheese_122, BobsGarage_122, Breezona_123, Chaser_131, Claus_121, Crossroads_125, Douge_133, DrSeegs_121, Faith1_121, Finemlucis_121, Gabriela_122, Gardann_122, GuuelaD_120, Itos_123, Kahlid_122, Lewan_125, LilDestine_119, Loadrie_124, Miley16_123, MkaliMitinis3_125, Nanosmite_159, Netyap_121, Nicholasp3_123, Tourach_124, Vetrix_122, Wigglewiggle_123, Wilder_123, Winky_123, Zakai_125, ZhongYanYuan_120,

Genes that have the "Most Annotated" start but do not call it:

- DyoEdafos_134,

Genes that do not have the "Most Annotated" start:

- Aziz_159, Estes_159, L5_72, MrMagoo_164, Rey_161,

Summary by start number:

Start 16:

- Found in 34 of 39 (87.2%) of genes in pham
- Manual Annotations of this start: 29 of 35
- Called 97.1% of time when present
- Phage (with cluster) where this start called: Archie_121 (L2), Baoshan_120 (L2), Bazzle_120 (L2), BigCheese_122 (L2), BobsGarage_122 (L2), Breezona_123 (L2), Chaser_131 (L4), Claus_121 (L2), Crossroads_125 (L2), Douge_133 (L4), DrSeegs_121 (L2), Faith1_121 (L2), Finemlucis_121 (L2), Gabriela_122 (L2), Gardann_122 (L2), GuuelaD_120 (L2), Itos_123 (L2), Kahlid_122 (L2), Lewan_125 (L2), LilDestine_119 (L2), Loadrie_124 (L2), Miley16_123 (L2), MkaliMitinis3_125 (L2), Nanosmite_159 (M3), Netyap_121 (L2), Nicholasp3_123 (L2), Tourach_124 (L2), Vetrix_122 (L2), Wigglewiggie_123 (L2), Wilder_123 (L2), Winky_123 (L2), Zakai_125 (L2), ZhongYanYuan_120 (L2),

Start 17:

- Found in 4 of 39 (10.3%) of genes in pham
- Manual Annotations of this start: 3 of 35
- Called 75.0% of time when present
- Phage (with cluster) where this start called: Aziz_159 (M2), Estes_159 (M2), MrMagoo_164 (M2),

Start 18:

- Found in 1 of 39 (2.6%) of genes in pham
- Manual Annotations of this start: 1 of 35
- Called 100.0% of time when present
- Phage (with cluster) where this start called: L5_72 (A2),

Start 20:

- Found in 1 of 39 (2.6%) of genes in pham
- Manual Annotations of this start: 1 of 35
- Called 100.0% of time when present
- Phage (with cluster) where this start called: Rey_161 (M2),

Start 23:

- Found in 28 of 39 (71.8%) of genes in pham
- Manual Annotations of this start: 1 of 35
- Called 3.6% of time when present
- Phage (with cluster) where this start called: DyoEdafos_134 (L4),

Summary by clusters:

There are 5 clusters represented in this pham: L4, A2, L2, M3, M2,

Info for manual annotations of cluster A2:

- Start number 18 was manually annotated 1 time for cluster A2.

Info for manual annotations of cluster L2:

- Start number 16 was manually annotated 27 times for cluster L2.

Info for manual annotations of cluster L4:

- Start number 16 was manually annotated 1 time for cluster L4.
- Start number 23 was manually annotated 1 time for cluster L4.

Info for manual annotations of cluster M2:

- Start number 17 was manually annotated 3 times for cluster M2.
- Start number 20 was manually annotated 1 time for cluster M2.

Info for manual annotations of cluster M3:

- Start number 16 was manually annotated 1 time for cluster M3.

Gene Information:

Gene: Archie_121 Start: 66124, Stop: 65933, Start Num: 16

Candidate Starts for Archie_121:

(15, 66136), (Start: 16 @66124 has 29 MA's), (Start: 23 @66079 has 1 MA's), (32, 65953),

Gene: Aziz_159 Start: 76111, Stop: 75911, Start Num: 17

Candidate Starts for Aziz_159:

(5, 76420), (6, 76417), (7, 76414), (8, 76408), (11, 76336), (13, 76177), (Start: 17 @76111 has 3 MA's), (19, 76102), (22, 76084), (26, 76015), (29, 75991), (32, 75949),

Gene: Baoshan_120 Start: 66333, Stop: 66148, Start Num: 16

Candidate Starts for Baoshan_120:

(15, 66345), (Start: 16 @66333 has 29 MA's), (31, 66168),

Gene: Bazzle_120 Start: 66711, Stop: 66520, Start Num: 16

Candidate Starts for Bazzle_120:

(15, 66723), (Start: 16 @66711 has 29 MA's), (Start: 23 @66666 has 1 MA's),

Gene: BigCheese_122 Start: 66602, Stop: 66411, Start Num: 16

Candidate Starts for BigCheese_122:

(15, 66614), (Start: 16 @66602 has 29 MA's), (Start: 23 @66557 has 1 MA's), (32, 66431),

Gene: BobsGarage_122 Start: 66602, Stop: 66411, Start Num: 16

Candidate Starts for BobsGarage_122:

(15, 66614), (Start: 16 @66602 has 29 MA's), (Start: 23 @66557 has 1 MA's), (32, 66431),

Gene: Breezona_123 Start: 66937, Stop: 66746, Start Num: 16

Candidate Starts for Breezona_123:

(15, 66949), (Start: 16 @66937 has 29 MA's), (Start: 23 @66892 has 1 MA's), (32, 66766),

Gene: Chaser_131 Start: 67928, Stop: 67737, Start Num: 16

Candidate Starts for Chaser_131:

(15, 67940), (Start: 16 @67928 has 29 MA's), (32, 67757),

Gene: Claus_121 Start: 66246, Stop: 66061, Start Num: 16

Candidate Starts for Claus_121:

(15, 66258), (Start: 16 @66246 has 29 MA's), (Start: 23 @66201 has 1 MA's), (31, 66081),

Gene: Crossroads_125 Start: 66699, Stop: 66508, Start Num: 16

Candidate Starts for Crossroads_125:

(15, 66711), (Start: 16 @66699 has 29 MA's), (Start: 23 @66654 has 1 MA's), (32, 66528),

Gene: Douge_133 Start: 68622, Stop: 68431, Start Num: 16

Candidate Starts for Douge_133:

(15, 68634), (Start: 16 @68622 has 29 MA's), (32, 68451),

Gene: DrSeegs_121 Start: 66937, Stop: 66746, Start Num: 16

Candidate Starts for DrSeegs_121:

(15, 66949), (Start: 16 @66937 has 29 MA's), (Start: 23 @66892 has 1 MA's), (32, 66766),

Gene: DyoEdafos_134 Start: 67841, Stop: 67695, Start Num: 23

Candidate Starts for DyoEdafos_134:

(15, 67898), (Start: 16 @67886 has 29 MA's), (Start: 23 @67841 has 1 MA's), (24, 67826), (32, 67715),

Gene: Estes_159 Start: 76117, Stop: 75917, Start Num: 17

Candidate Starts for Estes_159:

(1, 76450), (2, 76444), (3, 76441), (6, 76414), (13, 76183), (Start: 17 @76117 has 3 MA's), (19, 76108), (21, 76093), (26, 76021), (29, 75997), (32, 75955),

Gene: Faith1_121 Start: 66245, Stop: 66054, Start Num: 16

Candidate Starts for Faith1_121:

(15, 66257), (Start: 16 @66245 has 29 MA's), (Start: 23 @66200 has 1 MA's), (32, 66074),

Gene: Finemlucis_121 Start: 67273, Stop: 67082, Start Num: 16

Candidate Starts for Finemlucis_121:

(15, 67285), (Start: 16 @67273 has 29 MA's), (Start: 23 @67228 has 1 MA's), (32, 67102),

Gene: Gabriela_122 Start: 65490, Stop: 65299, Start Num: 16

Candidate Starts for Gabriela_122:

(15, 65502), (Start: 16 @65490 has 29 MA's), (Start: 23 @65445 has 1 MA's), (32, 65319),

Gene: Gardann_122 Start: 66167, Stop: 65976, Start Num: 16

Candidate Starts for Gardann_122:

(15, 66179), (Start: 16 @66167 has 29 MA's), (Start: 23 @66122 has 1 MA's), (32, 65996),

Gene: GuuelaD_120 Start: 66427, Stop: 66236, Start Num: 16

Candidate Starts for GuuelaD_120:

(15, 66439), (Start: 16 @66427 has 29 MA's), (Start: 23 @66382 has 1 MA's), (32, 66256),

Gene: Itos_123 Start: 65151, Stop: 64960, Start Num: 16

Candidate Starts for Itos_123:

(15, 65163), (Start: 16 @65151 has 29 MA's), (Start: 23 @65106 has 1 MA's), (32, 64980),

Gene: Kahlid_122 Start: 66452, Stop: 66261, Start Num: 16

Candidate Starts for Kahlid_122:

(15, 66464), (Start: 16 @66452 has 29 MA's), (Start: 23 @66407 has 1 MA's), (32, 66281),

Gene: L5_72 Start: 45356, Stop: 45180, Start Num: 18

Candidate Starts for L5_72:

(Start: 17 @45362 has 3 MA's), (Start: 18 @45356 has 1 MA's), (28, 45245), (33, 45185),

Gene: Lewan_125 Start: 67228, Stop: 67037, Start Num: 16

Candidate Starts for Lewan_125:

(15, 67240), (Start: 16 @67228 has 29 MA's), (Start: 23 @67183 has 1 MA's), (32, 67057),

Gene: LilDestine_119 Start: 65622, Stop: 65431, Start Num: 16

Candidate Starts for LilDestine_119:

(15, 65634), (Start: 16 @65622 has 29 MA's), (Start: 23 @65577 has 1 MA's), (32, 65451),

Gene: Loadrie_124 Start: 67260, Stop: 67069, Start Num: 16

Candidate Starts for Loadrie_124:

(15, 67272), (Start: 16 @67260 has 29 MA's), (Start: 23 @67215 has 1 MA's), (32, 67089),

Gene: Miley16_123 Start: 66937, Stop: 66746, Start Num: 16

Candidate Starts for Miley16_123:

(15, 66949), (Start: 16 @66937 has 29 MA's), (Start: 23 @66892 has 1 MA's), (32, 66766),

Gene: MkaliMitinis3_125 Start: 66564, Stop: 66373, Start Num: 16

Candidate Starts for MkaliMitinis3_125:

(15, 66576), (Start: 16 @66564 has 29 MA's), (Start: 23 @66519 has 1 MA's), (32, 66393),

Gene: MrMagoo_164 Start: 76795, Stop: 76595, Start Num: 17

Candidate Starts for MrMagoo_164:

(1, 77128), (2, 77122), (3, 77119), (6, 77092), (13, 76861), (Start: 17 @76795 has 3 MA's), (21, 76771), (26, 76699), (29, 76675), (32, 76633),

Gene: Nanosmite_159 Start: 75860, Stop: 75654, Start Num: 16

Candidate Starts for Nanosmite_159:

(12, 75920), (13, 75914), (14, 75893), (15, 75872), (Start: 16 @75860 has 29 MA's), (19, 75842), (25, 75785), (27, 75746), (29, 75731), (32, 75689),

Gene: Netyap_121 Start: 66651, Stop: 66460, Start Num: 16

Candidate Starts for Netyap_121:

(15, 66663), (Start: 16 @66651 has 29 MA's), (Start: 23 @66606 has 1 MA's), (32, 66480),

Gene: Nicholasp3_123 Start: 66167, Stop: 65976, Start Num: 16

Candidate Starts for Nicholasp3_123:

(15, 66179), (Start: 16 @66167 has 29 MA's), (Start: 23 @66122 has 1 MA's), (32, 65996),

Gene: Rey_161 Start: 75634, Stop: 75455, Start Num: 20

Candidate Starts for Rey_161:

(4, 75964), (9, 75925), (10, 75889), (15, 75673), (19, 75640), (Start: 20 @75634 has 1 MA's), (28, 75532), (30, 75511),

Gene: Tourach_124 Start: 67787, Stop: 67599, Start Num: 16

Candidate Starts for Tourach_124:

(15, 67799), (Start: 16 @67787 has 29 MA's), (32, 67616),

Gene: Vetrix_122 Start: 67077, Stop: 66886, Start Num: 16

Candidate Starts for Vetrix_122:

(15, 67089), (Start: 16 @67077 has 29 MA's), (Start: 23 @67032 has 1 MA's), (32, 66906),

Gene: Wigglewiggle_123 Start: 66673, Stop: 66482, Start Num: 16

Candidate Starts for Wigglewiggle_123:

(15, 66685), (Start: 16 @66673 has 29 MA's), (Start: 23 @66628 has 1 MA's), (32, 66502),

Gene: Wilder_123 Start: 66306, Stop: 66115, Start Num: 16

Candidate Starts for Wilder_123:

(15, 66318), (Start: 16 @66306 has 29 MA's), (Start: 23 @66261 has 1 MA's), (32, 66135),

Gene: Winky_123 Start: 66938, Stop: 66747, Start Num: 16

Candidate Starts for Winky_123:

(15, 66950), (Start: 16 @66938 has 29 MA's), (Start: 23 @66893 has 1 MA's), (32, 66767),

Gene: Zakai_125 Start: 66648, Stop: 66457, Start Num: 16

Candidate Starts for Zakai_125:

(15, 66660), (Start: 16 @66648 has 29 MA's), (Start: 23 @66603 has 1 MA's), (32, 66477),

Gene: ZhongYanYuan_120 Start: 66032, Stop: 65847, Start Num: 16

Candidate Starts for ZhongYanYuan_120:

(15, 66044), (Start: 16 @66032 has 29 MA's), (31, 65867),