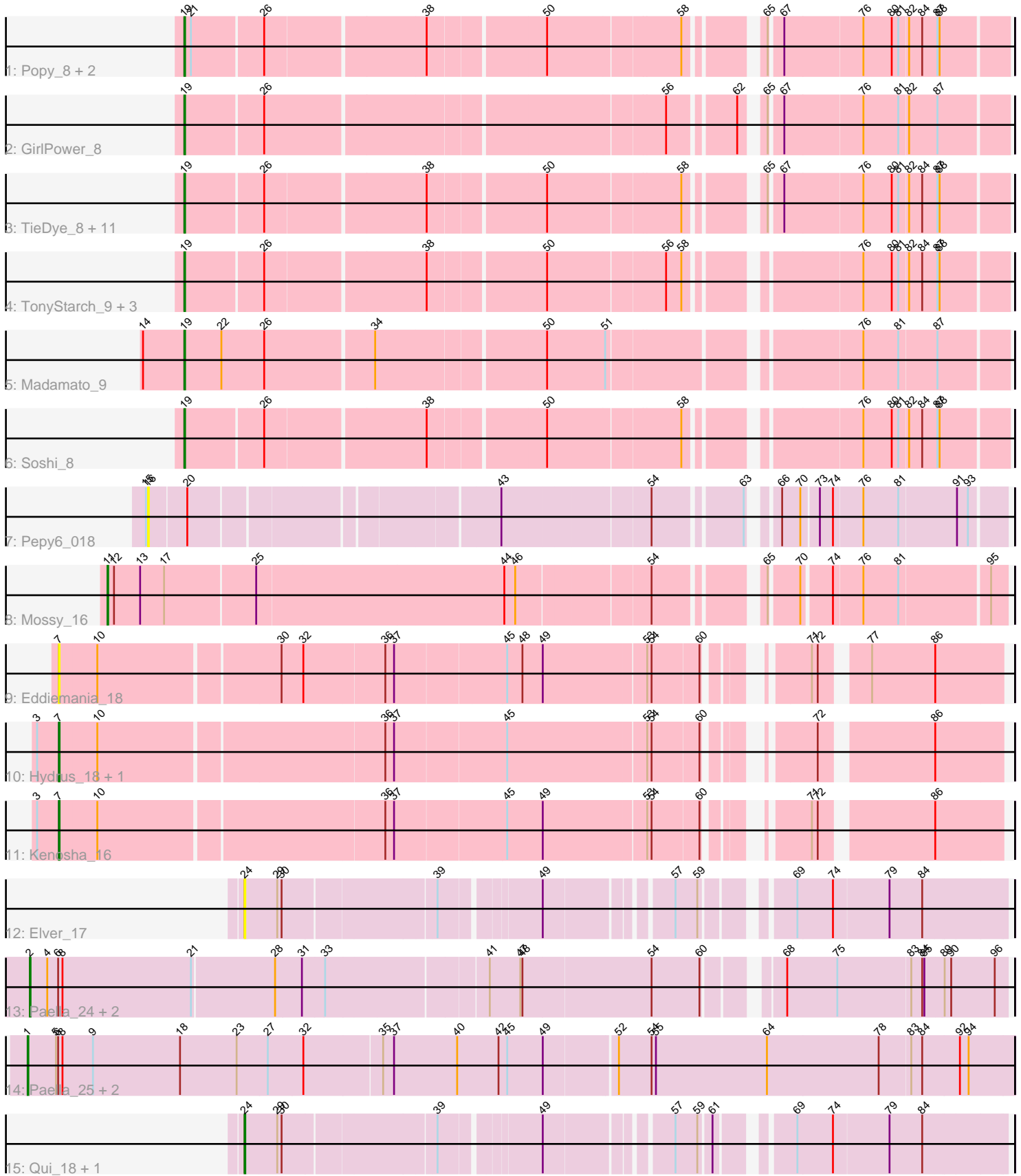


Pham 171626



Note: Tracks are now grouped by subcluster and scaled. Switching in subcluster is indicated by changes in track color. Track scale is now set by default to display the region 30 bp upstream of start 1 to 30 bp downstream of the last possible start. If this default region is judged to be packed too tightly with annotated starts, the track will be further scaled to only show that region of the ORF with annotated starts. This action will be indicated by adding "Zoomed" to the title. For starts, yellow indicates the location of called starts comprised solely of Glimmer/GeneMark auto-annotations, green indicates the location of called starts with at least 1 manual gene annotation.

Pham 171626 Report

This analysis was run 07/10/24 on database version 566.

Pham number 171626 has 37 members, 5 are drafts.

Phages represented in each track:

- Track 1 : Popy_8, FrodoSwaggins_8, DrGrey_8
- Track 2 : GirlPower_8
- Track 3 : TieDye_8, Spectropatronm_9, TaidaOne_9, Esketit_9, Maya_9, Hoshi_9, CherryBlossom_9, Jaylociraptor_9, FidgetOrca_9, Meibysrarus_9, IceWarrior_9, Indigenous_9
- Track 4 : TonyStarch_9, OlympicHelado_9, Rima_9, NamO_9
- Track 5 : Madamato_9
- Track 6 : Soshi_8
- Track 7 : Pepy6_018
- Track 8 : Mossy_16
- Track 9 : Eddiemania_18
- Track 10 : Hydrus_18, Zeph_18
- Track 11 : Kenosha_16
- Track 12 : Elver_17
- Track 13 : Paella_24, Elver_23, Qui_24
- Track 14 : Paella_25, Elver_24, Qui_25
- Track 15 : Qui_18, Paella_18

Summary of Final Annotations (See graph section above for start numbers):

The start number called the most often in the published annotations is 19, it was called in 22 of the 32 non-draft genes in the pham.

Genes that call this "Most Annotated" start:

- CherryBlossom_9, DrGrey_8, Esketit_9, FidgetOrca_9, FrodoSwaggins_8, GirlPower_8, Hoshi_9, IceWarrior_9, Indigenous_9, Jaylociraptor_9, Madamato_9, Maya_9, Meibysrarus_9, NamO_9, OlympicHelado_9, Popy_8, Rima_9, Soshi_8, Spectropatronm_9, TaidaOne_9, TieDye_8, TonyStarch_9,

Genes that have the "Most Annotated" start but do not call it:

-

Genes that do not have the "Most Annotated" start:

- Eddiemania_18, Elver_17, Elver_23, Elver_24, Hydrus_18, Kenosha_16, Mossy_16, Paella_18, Paella_24, Paella_25, Pepy6_018, Qui_18, Qui_24, Qui_25, Zeph_18,

Summary by start number:

Start 1:

- Found in 3 of 37 (8.1%) of genes in pham
- Manual Annotations of this start: 2 of 32
- Called 100.0% of time when present
- Phage (with cluster) where this start called: Elver_24 (FK), Paella_25 (FK), Qui_25 (FK),

Start 2:

- Found in 3 of 37 (8.1%) of genes in pham
- Manual Annotations of this start: 2 of 32
- Called 100.0% of time when present
- Phage (with cluster) where this start called: Elver_23 (FK), Paella_24 (FK), Qui_24 (FK),

Start 7:

- Found in 4 of 37 (10.8%) of genes in pham
- Manual Annotations of this start: 3 of 32
- Called 100.0% of time when present
- Phage (with cluster) where this start called: Eddiemania_18 (DJ), Hydrus_18 (DJ), Kenosha_16 (DJ), Zeph_18 (DJ),

Start 11:

- Found in 1 of 37 (2.7%) of genes in pham
- Manual Annotations of this start: 1 of 32
- Called 100.0% of time when present
- Phage (with cluster) where this start called: Mossy_16 (DJ),

Start 16:

- Found in 1 of 37 (2.7%) of genes in pham
- No Manual Annotations of this start.
- Called 100.0% of time when present
- Phage (with cluster) where this start called: Pepy6_018 (CC),

Start 19:

- Found in 22 of 37 (59.5%) of genes in pham
- Manual Annotations of this start: 22 of 32
- Called 100.0% of time when present
- Phage (with cluster) where this start called: CherryBlossom_9 (BI1), DrGrey_8 (BI1), Esketit_9 (BI1), FidgetOrca_9 (BI1), FrodoSwaggins_8 (BI1), GirlPower_8 (BI1), Hoshi_9 (BI1), IceWarrior_9 (BI1), Indigenous_9 (BI1), Jaylociraptor_9 (BI1), Madamoto_9 (BI1), Maya_9 (BI1), Meibysrarus_9 (BI1), Namo_9 (BI1), OlympicHelado_9 (BI1), Popy_8 (BI1), Rima_9 (BI1), Soshi_8 (BI1), Spectropatronm_9 (BI1), TaidaOne_9 (BI1), TieDye_8 (BI1), TonyStarch_9 (BI1),

Start 24:

- Found in 3 of 37 (8.1%) of genes in pham
- Manual Annotations of this start: 2 of 32

- Called 100.0% of time when present
- Phage (with cluster) where this start called: Elver_17 (FK), Paella_18 (FK), Qui_18 (FK),

Summary by clusters:

There are 4 clusters represented in this pham: CC, FK, DJ, BI1,

Info for manual annotations of cluster BI1:

- Start number 19 was manually annotated 22 times for cluster BI1.

Info for manual annotations of cluster DJ:

- Start number 7 was manually annotated 3 times for cluster DJ.
- Start number 11 was manually annotated 1 time for cluster DJ.

Info for manual annotations of cluster FK:

- Start number 1 was manually annotated 2 times for cluster FK.
- Start number 2 was manually annotated 2 times for cluster FK.
- Start number 24 was manually annotated 2 times for cluster FK.

Gene Information:

Gene: CherryBlossom_9 Start: 4921, Stop: 5949, Start Num: 19

Candidate Starts for CherryBlossom_9:

(Start: 19 @4921 has 22 MA's), (26, 5023), (38, 5233), (50, 5383), (58, 5557), (65, 5638), (67, 5653), (76, 5758), (80, 5797), (81, 5806), (82, 5818), (84, 5836), (87, 5857), (88, 5860),

Gene: DrGrey_8 Start: 4608, Stop: 5636, Start Num: 19

Candidate Starts for DrGrey_8:

(Start: 19 @4608 has 22 MA's), (21, 4617), (26, 4710), (38, 4920), (50, 5070), (58, 5244), (65, 5325), (67, 5340), (76, 5445), (80, 5484), (81, 5493), (82, 5505), (84, 5523), (87, 5544), (88, 5547),

Gene: Eddiemania_18 Start: 11823, Stop: 12992, Start Num: 7

Candidate Starts for Eddiemania_18:

(Start: 7 @11823 has 3 MA's), (10, 11874), (30, 12111), (32, 12141), (36, 12249), (37, 12261), (45, 12408), (48, 12429), (49, 12456), (53, 12594), (54, 12600), (60, 12663), (71, 12756), (72, 12762), (77, 12813), (86, 12900),

Gene: Elver_17 Start: 9747, Stop: 10661, Start Num: 24

Candidate Starts for Elver_17:

(Start: 24 @9747 has 2 MA's), (29, 9789), (30, 9795), (39, 9990), (49, 10110), (57, 10260), (59, 10290), (69, 10386), (74, 10434), (79, 10509), (84, 10554),

Gene: Elver_23 Start: 13529, Stop: 14797, Start Num: 2

Candidate Starts for Elver_23:

(Start: 2 @13529 has 2 MA's), (4, 13553), (6, 13568), (8, 13574), (21, 13751), (28, 13862), (31, 13898), (33, 13928), (41, 14135), (47, 14177), (48, 14180), (54, 14354), (60, 14420), (68, 14501), (75, 14570), (83, 14669), (84, 14684), (85, 14687), (89, 14711), (90, 14720), (96, 14780),

Gene: Elver_24 Start: 14826, Stop: 16160, Start Num: 1

Candidate Starts for Elver_24:

(Start: 1 @14826 has 2 MA's), (5, 14865), (6, 14868), (8, 14874), (9, 14916), (18, 15036), (23, 15114), (27, 15156), (32, 15204), (35, 15309), (37, 15324), (40, 15411), (42, 15468), (45, 15480), (49, 15528), (52, 15621), (54, 15666), (55, 15672), (64, 15825), (78, 15978), (83, 16020), (84, 16035), (92, 16086), (94, 16098),

Gene: Esketit_9 Start: 4904, Stop: 5932, Start Num: 19

Candidate Starts for Esketit_9:

(Start: 19 @4904 has 22 MA's), (26, 5006), (38, 5216), (50, 5366), (58, 5540), (65, 5621), (67, 5636), (76, 5741), (80, 5780), (81, 5789), (82, 5801), (84, 5819), (87, 5840), (88, 5843),

Gene: FidgetOrca_9 Start: 4904, Stop: 5932, Start Num: 19

Candidate Starts for FidgetOrca_9:

(Start: 19 @4904 has 22 MA's), (26, 5006), (38, 5216), (50, 5366), (58, 5540), (65, 5621), (67, 5636), (76, 5741), (80, 5780), (81, 5789), (82, 5801), (84, 5819), (87, 5840), (88, 5843),

Gene: FrodoSwaggins_8 Start: 4608, Stop: 5636, Start Num: 19

Candidate Starts for FrodoSwaggins_8:

(Start: 19 @4608 has 22 MA's), (21, 4617), (26, 4710), (38, 4920), (50, 5070), (58, 5244), (65, 5325), (67, 5340), (76, 5445), (80, 5484), (81, 5493), (82, 5505), (84, 5523), (87, 5544), (88, 5547),

Gene: GirlPower_8 Start: 5473, Stop: 6504, Start Num: 19

Candidate Starts for GirlPower_8:

(Start: 19 @5473 has 22 MA's), (26, 5575), (56, 6091), (62, 6172), (65, 6193), (67, 6208), (76, 6313), (81, 6361), (82, 6373), (87, 6412),

Gene: Hoshi_9 Start: 4904, Stop: 5932, Start Num: 19

Candidate Starts for Hoshi_9:

(Start: 19 @4904 has 22 MA's), (26, 5006), (38, 5216), (50, 5366), (58, 5540), (65, 5621), (67, 5636), (76, 5741), (80, 5780), (81, 5789), (82, 5801), (84, 5819), (87, 5840), (88, 5843),

Gene: Hydrus_18 Start: 11639, Stop: 12808, Start Num: 7

Candidate Starts for Hydrus_18:

(3, 11609), (Start: 7 @11639 has 3 MA's), (10, 11690), (36, 12065), (37, 12077), (45, 12224), (53, 12410), (54, 12416), (60, 12479), (72, 12578), (86, 12716),

Gene: IceWarrior_9 Start: 4904, Stop: 5932, Start Num: 19

Candidate Starts for IceWarrior_9:

(Start: 19 @4904 has 22 MA's), (26, 5006), (38, 5216), (50, 5366), (58, 5540), (65, 5621), (67, 5636), (76, 5741), (80, 5780), (81, 5789), (82, 5801), (84, 5819), (87, 5840), (88, 5843),

Gene: Indigenous_9 Start: 4904, Stop: 5932, Start Num: 19

Candidate Starts for Indigenous_9:

(Start: 19 @4904 has 22 MA's), (26, 5006), (38, 5216), (50, 5366), (58, 5540), (65, 5621), (67, 5636), (76, 5741), (80, 5780), (81, 5789), (82, 5801), (84, 5819), (87, 5840), (88, 5843),

Gene: Jaylociraptor_9 Start: 4904, Stop: 5932, Start Num: 19

Candidate Starts for Jaylociraptor_9:

(Start: 19 @4904 has 22 MA's), (26, 5006), (38, 5216), (50, 5366), (58, 5540), (65, 5621), (67, 5636), (76, 5741), (80, 5780), (81, 5789), (82, 5801), (84, 5819), (87, 5840), (88, 5843),

Gene: Kenosha_16 Start: 10240, Stop: 11409, Start Num: 7

Candidate Starts for Kenosha_16:

(3, 10210), (Start: 7 @10240 has 3 MA's), (10, 10291), (36, 10666), (37, 10678), (45, 10825), (49, 10873), (53, 11011), (54, 11017), (60, 11080), (71, 11173), (72, 11179), (86, 11317),

Gene: Madamato_9 Start: 4879, Stop: 5925, Start Num: 19

Candidate Starts for Madamato_9:

(14, 4822), (Start: 19 @4879 has 22 MA's), (22, 4930), (26, 4987), (34, 5131), (50, 5350), (51, 5428), (76, 5734), (81, 5782), (87, 5833),

Gene: Maya_9 Start: 4912, Stop: 5940, Start Num: 19

Candidate Starts for Maya_9:

(Start: 19 @4912 has 22 MA's), (26, 5014), (38, 5224), (50, 5374), (58, 5548), (65, 5629), (67, 5644), (76, 5749), (80, 5788), (81, 5797), (82, 5809), (84, 5827), (87, 5848), (88, 5851),

Gene: Meibysrarus_9 Start: 4904, Stop: 5932, Start Num: 19

Candidate Starts for Meibysrarus_9:

(Start: 19 @4904 has 22 MA's), (26, 5006), (38, 5216), (50, 5366), (58, 5540), (65, 5621), (67, 5636), (76, 5741), (80, 5780), (81, 5789), (82, 5801), (84, 5819), (87, 5840), (88, 5843),

Gene: Mossy_16 Start: 10528, Stop: 11652, Start Num: 11

Candidate Starts for Mossy_16:

(Start: 11 @10528 has 1 MA's), (12, 10537), (13, 10573), (17, 10606), (25, 10726), (44, 11053), (46, 11068), (54, 11239), (65, 11359), (70, 11392), (74, 11428), (76, 11467), (81, 11515), (95, 11632),

Gene: Namo_9 Start: 4904, Stop: 5932, Start Num: 19

Candidate Starts for Namo_9:

(Start: 19 @4904 has 22 MA's), (26, 5006), (38, 5216), (50, 5366), (56, 5519), (58, 5540), (76, 5741), (80, 5780), (81, 5789), (82, 5801), (84, 5819), (87, 5840), (88, 5843),

Gene: OlympicHelado_9 Start: 4904, Stop: 5932, Start Num: 19

Candidate Starts for OlympicHelado_9:

(Start: 19 @4904 has 22 MA's), (26, 5006), (38, 5216), (50, 5366), (56, 5519), (58, 5540), (76, 5741), (80, 5780), (81, 5789), (82, 5801), (84, 5819), (87, 5840), (88, 5843),

Gene: Paella_24 Start: 13531, Stop: 14799, Start Num: 2

Candidate Starts for Paella_24:

(Start: 2 @13531 has 2 MA's), (4, 13555), (6, 13570), (8, 13576), (21, 13753), (28, 13864), (31, 13900), (33, 13930), (41, 14137), (47, 14179), (48, 14182), (54, 14356), (60, 14422), (68, 14503), (75, 14572), (83, 14671), (84, 14686), (85, 14689), (89, 14713), (90, 14722), (96, 14782),

Gene: Paella_25 Start: 14828, Stop: 16162, Start Num: 1

Candidate Starts for Paella_25:

(Start: 1 @14828 has 2 MA's), (5, 14867), (6, 14870), (8, 14876), (9, 14918), (18, 15038), (23, 15116), (27, 15158), (32, 15206), (35, 15311), (37, 15326), (40, 15413), (42, 15470), (45, 15482), (49, 15530), (52, 15623), (54, 15668), (55, 15674), (64, 15827), (78, 15980), (83, 16022), (84, 16037), (92, 16088), (94, 16100),

Gene: Paella_18 Start: 9746, Stop: 10660, Start Num: 24

Candidate Starts for Paella_18:

(Start: 24 @9746 has 2 MA's), (29, 9788), (30, 9794), (39, 9989), (49, 10109), (57, 10259), (59, 10289), (61, 10304), (69, 10385), (74, 10433), (79, 10508), (84, 10553),

Gene: Pepy6_018 Start: 16104, Stop: 17147, Start Num: 16

Candidate Starts for Pepy6_018:

(15, 16101), (16, 16104), (20, 16152), (43, 16536), (54, 16728), (63, 16836), (66, 16860), (70, 16884), (73, 16905), (74, 16923), (76, 16962), (81, 17010), (91, 17088), (93, 17103),

Gene: Popy_8 Start: 4608, Stop: 5636, Start Num: 19

Candidate Starts for Popy_8:

(Start: 19 @4608 has 22 MA's), (21, 4617), (26, 4710), (38, 4920), (50, 5070), (58, 5244), (65, 5325), (67, 5340), (76, 5445), (80, 5484), (81, 5493), (82, 5505), (84, 5523), (87, 5544), (88, 5547),

Gene: Qui_18 Start: 9746, Stop: 10660, Start Num: 24

Candidate Starts for Qui_18:

(Start: 24 @9746 has 2 MA's), (29, 9788), (30, 9794), (39, 9989), (49, 10109), (57, 10259), (59, 10289), (61, 10304), (69, 10385), (74, 10433), (79, 10508), (84, 10553),

Gene: Qui_24 Start: 13531, Stop: 14799, Start Num: 2

Candidate Starts for Qui_24:

(Start: 2 @13531 has 2 MA's), (4, 13555), (6, 13570), (8, 13576), (21, 13753), (28, 13864), (31, 13900), (33, 13930), (41, 14137), (47, 14179), (48, 14182), (54, 14356), (60, 14422), (68, 14503), (75, 14572), (83, 14671), (84, 14686), (85, 14689), (89, 14713), (90, 14722), (96, 14782),

Gene: Qui_25 Start: 14828, Stop: 16162, Start Num: 1

Candidate Starts for Qui_25:

(Start: 1 @14828 has 2 MA's), (5, 14867), (6, 14870), (8, 14876), (9, 14918), (18, 15038), (23, 15116), (27, 15158), (32, 15206), (35, 15311), (37, 15326), (40, 15413), (42, 15470), (45, 15482), (49, 15530), (52, 15623), (54, 15668), (55, 15674), (64, 15827), (78, 15980), (83, 16022), (84, 16037), (92, 16088), (94, 16100),

Gene: Rima_9 Start: 4904, Stop: 5932, Start Num: 19

Candidate Starts for Rima_9:

(Start: 19 @4904 has 22 MA's), (26, 5006), (38, 5216), (50, 5366), (56, 5519), (58, 5540), (76, 5741), (80, 5780), (81, 5789), (82, 5801), (84, 5819), (87, 5840), (88, 5843),

Gene: Soshi_8 Start: 4608, Stop: 5636, Start Num: 19

Candidate Starts for Soshi_8:

(Start: 19 @4608 has 22 MA's), (26, 4710), (38, 4920), (50, 5070), (58, 5244), (76, 5445), (80, 5484), (81, 5493), (82, 5505), (84, 5523), (87, 5544), (88, 5547),

Gene: Spectropatronm_9 Start: 4904, Stop: 5932, Start Num: 19

Candidate Starts for Spectropatronm_9:

(Start: 19 @4904 has 22 MA's), (26, 5006), (38, 5216), (50, 5366), (58, 5540), (65, 5621), (67, 5636), (76, 5741), (80, 5780), (81, 5789), (82, 5801), (84, 5819), (87, 5840), (88, 5843),

Gene: TaidaOne_9 Start: 4904, Stop: 5932, Start Num: 19

Candidate Starts for TaidaOne_9:

(Start: 19 @4904 has 22 MA's), (26, 5006), (38, 5216), (50, 5366), (58, 5540), (65, 5621), (67, 5636), (76, 5741), (80, 5780), (81, 5789), (82, 5801), (84, 5819), (87, 5840), (88, 5843),

Gene: TieDye_8 Start: 4614, Stop: 5642, Start Num: 19

Candidate Starts for TieDye_8:

(Start: 19 @4614 has 22 MA's), (26, 4716), (38, 4926), (50, 5076), (58, 5250), (65, 5331), (67, 5346), (76, 5451), (80, 5490), (81, 5499), (82, 5511), (84, 5529), (87, 5550), (88, 5553),

Gene: TonyStarch_9 Start: 4904, Stop: 5932, Start Num: 19

Candidate Starts for TonyStarch_9:

(Start: 19 @4904 has 22 MA's), (26, 5006), (38, 5216), (50, 5366), (56, 5519), (58, 5540), (76, 5741), (80, 5780), (81, 5789), (82, 5801), (84, 5819), (87, 5840), (88, 5843),

Gene: Zeph_18 Start: 11621, Stop: 12790, Start Num: 7

Candidate Starts for Zeph_18:

(3, 11591), (Start: 7 @11621 has 3 MA's), (10, 11672), (36, 12047), (37, 12059), (45, 12206), (53, 12392), (54, 12398), (60, 12461), (72, 12560), (86, 12698),