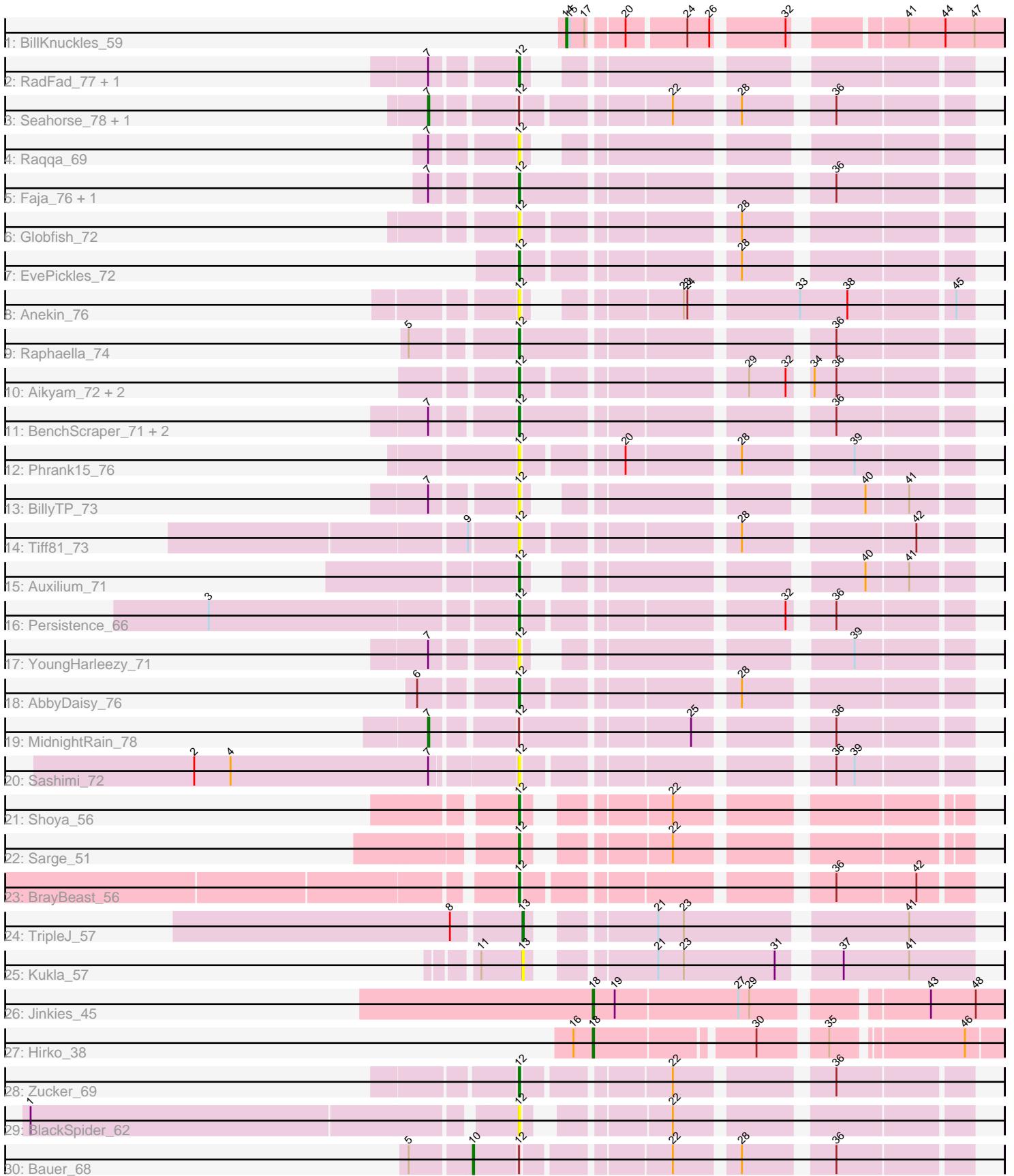


Pham 171629



Note: Tracks are now grouped by subcluster and scaled. Switching in subcluster is indicated by changes in track color. Track scale is now set by default to display the region 30 bp upstream of start 1 to 30 bp downstream of the last possible start. If this default region is judged to be packed too tightly with annotated starts, the track will be further scaled to only show that region of the ORF with annotated starts. This action will be indicated by adding "Zoomed" to the title. For starts, yellow indicates the location of called starts comprised solely of Glimmer/GeneMark auto-annotations, green indicates the location of called starts with at least 1 manual gene annotation.

Pham 171629 Report

This analysis was run 07/10/24 on database version 566.

Pham number 171629 has 37 members, 14 are drafts.

Phages represented in each track:

- Track 1 : BillKnuckles_59
- Track 2 : RadFad_77, Hillester_77
- Track 3 : Seahorse_78, Richie_76
- Track 4 : Raqqa_69
- Track 5 : Faja_76, Hestia_67
- Track 6 : Globfish_72
- Track 7 : EvePickles_72
- Track 8 : Anekin_76
- Track 9 : Raphaella_74
- Track 10 : Aikyam_72, Sakai_71, Gorpy_72
- Track 11 : BenchScraper_71, Isolde_71, CookieBear_71
- Track 12 : Phrank15_76
- Track 13 : BillyTP_73
- Track 14 : Tiff81_73
- Track 15 : Auxilium_71
- Track 16 : Persistence_66
- Track 17 : YoungHarleezy_71
- Track 18 : AbbyDaisy_76
- Track 19 : MidnightRain_78
- Track 20 : Sashimi_72
- Track 21 : Shoya_56
- Track 22 : Sarge_51
- Track 23 : BrayBeast_56
- Track 24 : TripleJ_57
- Track 25 : Kukla_57
- Track 26 : Jinkies_45
- Track 27 : Hirko_38
- Track 28 : Zucker_69
- Track 29 : BlackSpider_62
- Track 30 : Bauer_68

Summary of Final Annotations (See graph section above for start numbers):

The start number called the most often in the published annotations is 12, it was called in 15 of the 23 non-draft genes in the pham.

Genes that call this "Most Annotated" start:

- AbbyDaisy_76, Aikyam_72, Anekin_76, Auxilium_71, BenchScraper_71, BillyTP_73, BlackSpider_62, BrayBeast_56, CookieBear_71, EvePickles_72, Faja_76, Globfish_72, Gorpy_72, Hestia_67, Hillester_77, Isolde_71, Persistence_66, Phrank15_76, RadFad_77, Raphaella_74, Raqqa_69, Sakai_71, Sarge_51, Sashimi_72, Shoya_56, Tiff81_73, YoungHarleezy_71, Zucker_69,

Genes that have the "Most Annotated" start but do not call it:

- Bauer_68, MidnightRain_78, Richie_76, Seahorse_78,

Genes that do not have the "Most Annotated" start:

- BillKnuckles_59, Hirko_38, Jinkies_45, Kukla_57, TripleJ_57,

Summary by start number:

Start 7:

- Found in 14 of 37 (37.8%) of genes in pham
- Manual Annotations of this start: 3 of 23
- Called 21.4% of time when present
- Phage (with cluster) where this start called: MidnightRain_78 (AY), Richie_76 (AY), Seahorse_78 (AY),

Start 10:

- Found in 1 of 37 (2.7%) of genes in pham
- Manual Annotations of this start: 1 of 23
- Called 100.0% of time when present
- Phage (with cluster) where this start called: Bauer_68 (FN),

Start 12:

- Found in 32 of 37 (86.5%) of genes in pham
- Manual Annotations of this start: 15 of 23
- Called 87.5% of time when present
- Phage (with cluster) where this start called: AbbyDaisy_76 (AY), Aikyam_72 (AY), Anekin_76 (AY), Auxilium_71 (AY), BenchScraper_71 (AY), BillyTP_73 (AY), BlackSpider_62 (FN), BrayBeast_56 (FB), CookieBear_71 (AY), EvePickles_72 (AY), Faja_76 (AY), Globfish_72 (AY), Gorpy_72 (AY), Hestia_67 (AY), Hillester_77 (AY), Isolde_71 (AY), Persistence_66 (AY), Phrank15_76 (AY), RadFad_77 (AY), Raphaella_74 (AY), Raqqa_69 (AY), Sakai_71 (AY), Sarge_51 (FB), Sashimi_72 (AY), Shoya_56 (FB), Tiff81_73 (AY), YoungHarleezy_71 (AY), Zucker_69 (FN),

Start 13:

- Found in 2 of 37 (5.4%) of genes in pham
- Manual Annotations of this start: 1 of 23
- Called 100.0% of time when present
- Phage (with cluster) where this start called: Kukla_57 (FJ), TripleJ_57 (FJ),

Start 14:

- Found in 1 of 37 (2.7%) of genes in pham
- Manual Annotations of this start: 1 of 23
- Called 100.0% of time when present

- Phage (with cluster) where this start called: BillKnuckles_59 (A1),

Start 18:

- Found in 2 of 37 (5.4%) of genes in pham
- Manual Annotations of this start: 2 of 23
- Called 100.0% of time when present
- Phage (with cluster) where this start called: Hirko_38 (FL), Jinkies_45 (FL),

Summary by clusters:

There are 6 clusters represented in this pham: A1, FB, AY, FJ, FL, FN,

Info for manual annotations of cluster A1:

- Start number 14 was manually annotated 1 time for cluster A1.

Info for manual annotations of cluster AY:

- Start number 7 was manually annotated 3 times for cluster AY.
- Start number 12 was manually annotated 11 times for cluster AY.

Info for manual annotations of cluster FB:

- Start number 12 was manually annotated 3 times for cluster FB.

Info for manual annotations of cluster FJ:

- Start number 13 was manually annotated 1 time for cluster FJ.

Info for manual annotations of cluster FL:

- Start number 18 was manually annotated 2 times for cluster FL.

Info for manual annotations of cluster FN:

- Start number 10 was manually annotated 1 time for cluster FN.
- Start number 12 was manually annotated 1 time for cluster FN.

Gene Information:

Gene: AbbyDaisy_76 Start: 41022, Stop: 41339, Start Num: 12

Candidate Starts for AbbyDaisy_76:

(6, 40953), (Start: 12 @41022 has 15 MA's), (28, 41172),

Gene: Aikyam_72 Start: 37441, Stop: 37758, Start Num: 12

Candidate Starts for Aikyam_72:

(Start: 12 @37441 has 15 MA's), (29, 37597), (32, 37627), (34, 37636), (36, 37654),

Gene: Anekin_76 Start: 40019, Stop: 40330, Start Num: 12

Candidate Starts for Anekin_76:

(Start: 12 @40019 has 15 MA's), (23, 40112), (24, 40115), (33, 40196), (38, 40235), (45, 40316),

Gene: Auxilium_71 Start: 37005, Stop: 37301, Start Num: 12

Candidate Starts for Auxilium_71:

(Start: 12 @37005 has 15 MA's), (40, 37221), (41, 37254),

Gene: Bauer_68 Start: 38091, Stop: 38444, Start Num: 10

Candidate Starts for Bauer_68:

(5, 38049), (Start: 10 @38091 has 1 MA's), (Start: 12 @38127 has 15 MA's), (22, 38232), (28, 38277), (36, 38340),

Gene: BenchScraper_71 Start: 38140, Stop: 38463, Start Num: 12

Candidate Starts for BenchScraper_71:

(Start: 7 @38080 has 3 MA's), (Start: 12 @38140 has 15 MA's), (36, 38359),

Gene: BillKnuckles_59 Start: 42435, Stop: 42130, Start Num: 14

Candidate Starts for BillKnuckles_59:

(Start: 14 @42435 has 1 MA's), (15, 42432), (17, 42420), (20, 42396), (24, 42351), (26, 42333), (32, 42282), (41, 42207), (44, 42177), (47, 42153),

Gene: BillyTP_73 Start: 39995, Stop: 40291, Start Num: 12

Candidate Starts for BillyTP_73:

(Start: 7 @39935 has 3 MA's), (Start: 12 @39995 has 15 MA's), (40, 40211), (41, 40244),

Gene: BlackSpider_62 Start: 36140, Stop: 36442, Start Num: 12

Candidate Starts for BlackSpider_62:

(1, 35759), (Start: 12 @36140 has 15 MA's), (22, 36230),

Gene: BrayBeast_56 Start: 31864, Stop: 32181, Start Num: 12

Candidate Starts for BrayBeast_56:

(Start: 12 @31864 has 15 MA's), (36, 32077), (42, 32140),

Gene: CookieBear_71 Start: 38614, Stop: 38937, Start Num: 12

Candidate Starts for CookieBear_71:

(Start: 7 @38554 has 3 MA's), (Start: 12 @38614 has 15 MA's), (36, 38833),

Gene: EvePickles_72 Start: 39884, Stop: 40201, Start Num: 12

Candidate Starts for EvePickles_72:

(Start: 12 @39884 has 15 MA's), (28, 40034),

Gene: Faja_76 Start: 40656, Stop: 40979, Start Num: 12

Candidate Starts for Faja_76:

(Start: 7 @40596 has 3 MA's), (Start: 12 @40656 has 15 MA's), (36, 40875),

Gene: Globfish_72 Start: 38348, Stop: 38665, Start Num: 12

Candidate Starts for Globfish_72:

(Start: 12 @38348 has 15 MA's), (28, 38498),

Gene: Gorpy_72 Start: 39861, Stop: 40178, Start Num: 12

Candidate Starts for Gorpy_72:

(Start: 12 @39861 has 15 MA's), (29, 40017), (32, 40047), (34, 40056), (36, 40074),

Gene: Hestia_67 Start: 36879, Stop: 37202, Start Num: 12

Candidate Starts for Hestia_67:

(Start: 7 @36819 has 3 MA's), (Start: 12 @36879 has 15 MA's), (36, 37098),

Gene: Hillester_77 Start: 39406, Stop: 39702, Start Num: 12

Candidate Starts for Hillester_77:

(Start: 7 @39346 has 3 MA's), (Start: 12 @39406 has 15 MA's),

Gene: Hirko_38 Start: 32932, Stop: 33225, Start Num: 18
Candidate Starts for Hirko_38:
(16, 32917), (Start: 18 @32932 has 2 MA's), (30, 33052), (35, 33100), (46, 33196),

Gene: Isolde_71 Start: 38725, Stop: 39048, Start Num: 12
Candidate Starts for Isolde_71:
(Start: 7 @38665 has 3 MA's), (Start: 12 @38725 has 15 MA's), (36, 38944),

Gene: Jinkies_45 Start: 34146, Stop: 34457, Start Num: 18
Candidate Starts for Jinkies_45:
(Start: 18 @34146 has 2 MA's), (19, 34164), (27, 34263), (29, 34272), (43, 34398), (48, 34434),

Gene: Kukla_57 Start: 35378, Stop: 35701, Start Num: 13
Candidate Starts for Kukla_57:
(11, 35345), (Start: 13 @35378 has 1 MA's), (21, 35459), (23, 35480), (31, 35555), (37, 35594), (41, 35648),

Gene: MidnightRain_78 Start: 40135, Stop: 40518, Start Num: 7
Candidate Starts for MidnightRain_78:
(Start: 7 @40135 has 3 MA's), (Start: 12 @40195 has 15 MA's), (25, 40321), (36, 40414),

Gene: Persistence_66 Start: 36801, Stop: 37118, Start Num: 12
Candidate Starts for Persistence_66:
(3, 36561), (Start: 12 @36801 has 15 MA's), (32, 36987), (36, 37014),

Gene: Phrank15_76 Start: 38696, Stop: 39013, Start Num: 12
Candidate Starts for Phrank15_76:
(Start: 12 @38696 has 15 MA's), (20, 38765), (28, 38846), (39, 38924),

Gene: RadFad_77 Start: 39406, Stop: 39702, Start Num: 12
Candidate Starts for RadFad_77:
(Start: 7 @39346 has 3 MA's), (Start: 12 @39406 has 15 MA's),

Gene: Raphaella_74 Start: 38671, Stop: 38994, Start Num: 12
Candidate Starts for Raphaella_74:
(5, 38596), (Start: 12 @38671 has 15 MA's), (36, 38890),

Gene: Raqqa_69 Start: 36817, Stop: 37113, Start Num: 12
Candidate Starts for Raqqa_69:
(Start: 7 @36757 has 3 MA's), (Start: 12 @36817 has 15 MA's),

Gene: Richie_76 Start: 40479, Stop: 40859, Start Num: 7
Candidate Starts for Richie_76:
(Start: 7 @40479 has 3 MA's), (Start: 12 @40542 has 15 MA's), (22, 40647), (28, 40692), (36, 40755),

Gene: Sakai_71 Start: 38572, Stop: 38889, Start Num: 12
Candidate Starts for Sakai_71:
(Start: 12 @38572 has 15 MA's), (29, 38728), (32, 38758), (34, 38767), (36, 38785),

Gene: Sarge_51 Start: 30199, Stop: 30498, Start Num: 12
Candidate Starts for Sarge_51:
(Start: 12 @30199 has 15 MA's), (22, 30289),

Gene: Sashimi_72 Start: 38667, Stop: 38984, Start Num: 12

Candidate Starts for Sashimi_72:

(2, 38412), (4, 38442), (Start: 7 @38604 has 3 MA's), (Start: 12 @38667 has 15 MA's), (36, 38880), (39, 38895),

Gene: Seahorse_78 Start: 41611, Stop: 41991, Start Num: 7

Candidate Starts for Seahorse_78:

(Start: 7 @41611 has 3 MA's), (Start: 12 @41674 has 15 MA's), (22, 41779), (28, 41824), (36, 41887),

Gene: Shoya_56 Start: 31813, Stop: 32112, Start Num: 12

Candidate Starts for Shoya_56:

(Start: 12 @31813 has 15 MA's), (22, 31903),

Gene: Tiff81_73 Start: 37265, Stop: 37582, Start Num: 12

Candidate Starts for Tiff81_73:

(9, 37229), (Start: 12 @37265 has 15 MA's), (28, 37415), (42, 37541),

Gene: TripleJ_57 Start: 35331, Stop: 35654, Start Num: 13

Candidate Starts for TripleJ_57:

(8, 35280), (Start: 13 @35331 has 1 MA's), (21, 35412), (23, 35433), (41, 35601),

Gene: YoungHarleezy_71 Start: 38447, Stop: 38743, Start Num: 12

Candidate Starts for YoungHarleezy_71:

(Start: 7 @38387 has 3 MA's), (Start: 12 @38447 has 15 MA's), (39, 38654),

Gene: Zucker_69 Start: 40359, Stop: 40676, Start Num: 12

Candidate Starts for Zucker_69:

(Start: 12 @40359 has 15 MA's), (22, 40464), (36, 40572),