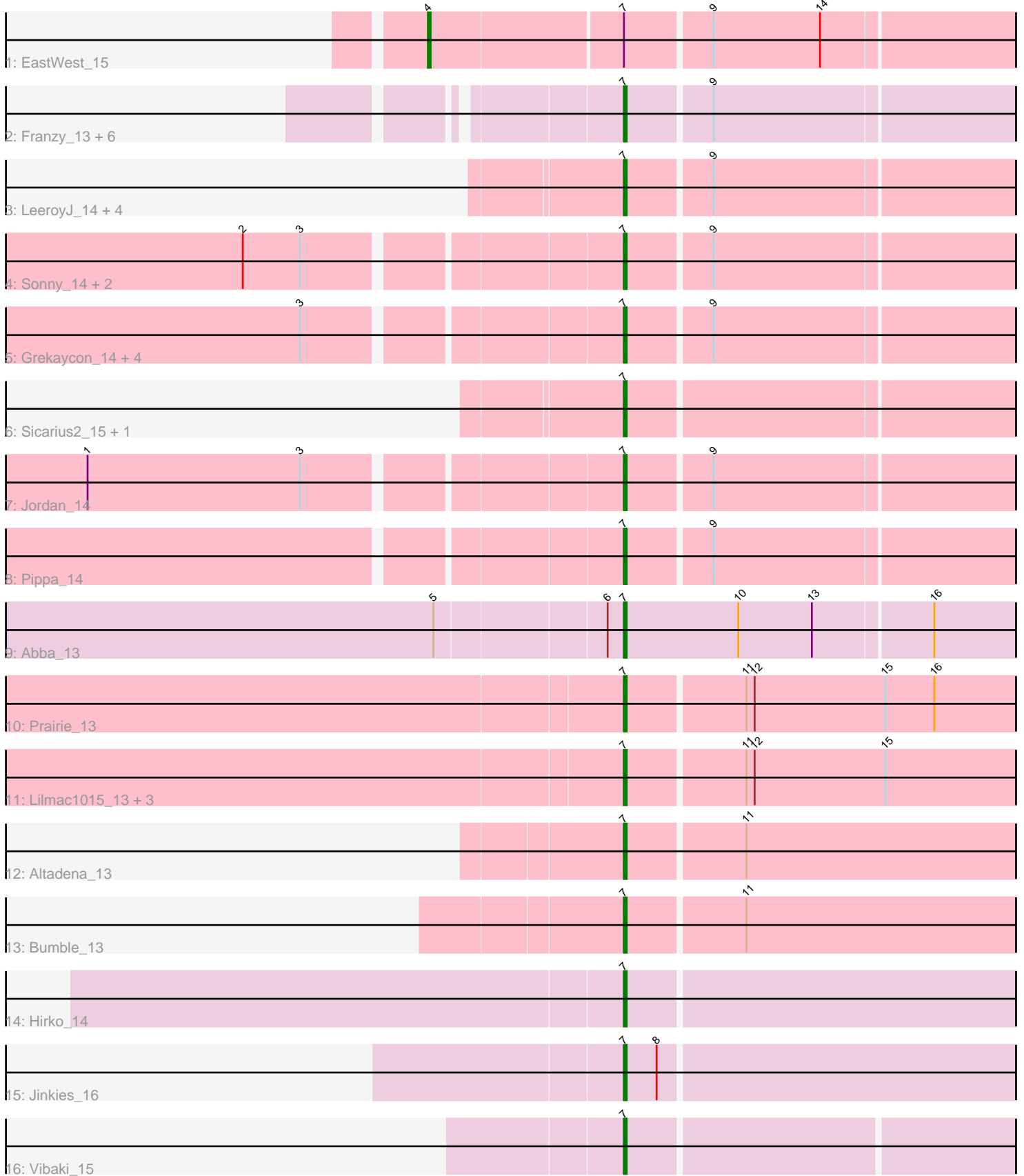


Pham 171632



Note: Tracks are now grouped by subcluster and scaled. Switching in subcluster is indicated by changes in track color. Track scale is now set by default to display the region 30 bp upstream of start 1 to 30 bp downstream of the last possible start. If this default region is judged to be packed too tightly with annotated starts, the track will be further scaled to only show that region of the ORF with annotated starts. This action will be indicated by adding "Zoomed" to the title. For starts, yellow indicates the location of called starts comprised solely of Glimmer/GeneMark auto-annotations, green indicates the location of called starts with at least 1 manual gene annotation.

## Pham 171632 Report

This analysis was run 07/10/24 on database version 566.

Pham number 171632 has 36 members, 2 are drafts.

Phages represented in each track:

- Track 1 : EastWest\_15
- Track 2 : Franzy\_13, NathanVaag\_13, King2\_13, Piccoletto\_13, Jawnski\_13, Beans\_13, Brent\_13
- Track 3 : LeeroyJ\_14, Timinator\_14, StevieBAY\_14, GravityBall\_14, BarretLemon\_14
- Track 4 : Sonny\_14, Zartrosa\_14, JKerns\_14
- Track 5 : Grekaycon\_14, Shade\_14, BossLady\_14, Martha\_14, TaeYoung\_14
- Track 6 : Sicarius2\_15, Wyborn\_15
- Track 7 : Jordan\_14
- Track 8 : Pippa\_14
- Track 9 : Abba\_13
- Track 10 : Prairie\_13
- Track 11 : Lilmac1015\_13, Klevey\_13, Bolt007\_13, CalWood4100\_13
- Track 12 : Altadena\_13
- Track 13 : Bumble\_13
- Track 14 : Hirko\_14
- Track 15 : Jinkies\_16
- Track 16 : Vibaki\_15

### ***Summary of Final Annotations (See graph section above for start numbers):***

The start number called the most often in the published annotations is 7, it was called in 33 of the 34 non-draft genes in the pham.

Genes that call this "Most Annotated" start:

- Abba\_13, Altadena\_13, BarretLemon\_14, Beans\_13, Bolt007\_13, BossLady\_14, Brent\_13, Bumble\_13, CalWood4100\_13, Franzy\_13, GravityBall\_14, Grekaycon\_14, Hirko\_14, JKerns\_14, Jawnski\_13, Jinkies\_16, Jordan\_14, King2\_13, Klevey\_13, LeeroyJ\_14, Lilmac1015\_13, Martha\_14, NathanVaag\_13, Piccoletto\_13, Pippa\_14, Prairie\_13, Shade\_14, Sicarius2\_15, Sonny\_14, StevieBAY\_14, TaeYoung\_14, Timinator\_14, Vibaki\_15, Wyborn\_15, Zartrosa\_14,

Genes that have the "Most Annotated" start but do not call it:

- EastWest\_15,

Genes that do not have the "Most Annotated" start:

- 

### Summary by start number:

Start 4:

- Found in 1 of 36 ( 2.8% ) of genes in pham
- Manual Annotations of this start: 1 of 34
- Called 100.0% of time when present
- Phage (with cluster) where this start called: EastWest\_15 (AO),

Start 7:

- Found in 36 of 36 ( 100.0% ) of genes in pham
- Manual Annotations of this start: 33 of 34
- Called 97.2% of time when present
- Phage (with cluster) where this start called: Abba\_13 (AO3), Altadena\_13 (FH), BarretLemon\_14 (AO2), Beans\_13 (AO1), Bolt007\_13 (FH), BossLady\_14 (AO2), Brent\_13 (AO1), Bumble\_13 (FH), CalWood4100\_13 (FH), Franzy\_13 (AO1), GravityBall\_14 (AO2), Grekaycon\_14 (AO2), Hirko\_14 (FL), JKerns\_14 (AO2), Jawnski\_13 (AO1), Jinkies\_16 (FL), Jordan\_14 (AO2), King2\_13 (AO1), Klevey\_13 (FH), LeeroyJ\_14 (AO2), Lilmac1015\_13 (FH), Martha\_14 (AO2), NathanVaag\_13 (AO1), Piccoletto\_13 (AO1), Pippa\_14 (AO2), Prairie\_13 (FH), Shade\_14 (AO2), Sicarius2\_15 (AO2), Sonny\_14 (AO2), StevieBAY\_14 (AO2), TaeYoung\_14 (AO2), Timinator\_14 (AO2), Vibaki\_15 (FL), Wyborn\_15 (AO2), Zartrosa\_14 (AO2),

### Summary by clusters:

There are 6 clusters represented in this pham: AO, AO3, AO2, AO1, FH, FL,

Info for manual annotations of cluster AO:

- Start number 4 was manually annotated 1 time for cluster AO.

Info for manual annotations of cluster AO1:

- Start number 7 was manually annotated 7 times for cluster AO1.

Info for manual annotations of cluster AO2:

- Start number 7 was manually annotated 16 times for cluster AO2.

Info for manual annotations of cluster AO3:

- Start number 7 was manually annotated 1 time for cluster AO3.

Info for manual annotations of cluster FH:

- Start number 7 was manually annotated 6 times for cluster FH.

Info for manual annotations of cluster FL:

- Start number 7 was manually annotated 3 times for cluster FL.

### Gene Information:

Gene: Abba\_13 Start: 10446, Stop: 10676, Start Num: 7

Candidate Starts for Abba\_13:  
(5, 10380), (6, 10440), (Start: 7 @10446 has 33 MA's), (10, 10488), (13, 10515), (16, 10557),

Gene: Altadena\_13 Start: 10131, Stop: 10352, Start Num: 7  
Candidate Starts for Altadena\_13:  
(Start: 7 @10131 has 33 MA's), (11, 10173),

Gene: BarretLemon\_14 Start: 10650, Stop: 10889, Start Num: 7  
Candidate Starts for BarretLemon\_14:  
(Start: 7 @10650 has 33 MA's), (9, 10680),

Gene: Beans\_13 Start: 10336, Stop: 10575, Start Num: 7  
Candidate Starts for Beans\_13:  
(Start: 7 @10336 has 33 MA's), (9, 10366),

Gene: Bolt007\_13 Start: 10029, Stop: 10229, Start Num: 7  
Candidate Starts for Bolt007\_13:  
(Start: 7 @10029 has 33 MA's), (11, 10071), (12, 10074), (15, 10122),

Gene: BossLady\_14 Start: 10652, Stop: 10891, Start Num: 7  
Candidate Starts for BossLady\_14:  
(3, 10544), (Start: 7 @10652 has 33 MA's), (9, 10682),

Gene: Brent\_13 Start: 10318, Stop: 10557, Start Num: 7  
Candidate Starts for Brent\_13:  
(Start: 7 @10318 has 33 MA's), (9, 10348),

Gene: Bumble\_13 Start: 10130, Stop: 10345, Start Num: 7  
Candidate Starts for Bumble\_13:  
(Start: 7 @10130 has 33 MA's), (11, 10172),

Gene: CalWood4100\_13 Start: 10012, Stop: 10218, Start Num: 7  
Candidate Starts for CalWood4100\_13:  
(Start: 7 @10012 has 33 MA's), (11, 10054), (12, 10057), (15, 10105),

Gene: EastWest\_15 Start: 10619, Stop: 10891, Start Num: 4  
Candidate Starts for EastWest\_15:  
(Start: 4 @10619 has 1 MA's), (Start: 7 @10688 has 33 MA's), (9, 10718), (14, 10757),

Gene: Franzy\_13 Start: 10318, Stop: 10557, Start Num: 7  
Candidate Starts for Franzy\_13:  
(Start: 7 @10318 has 33 MA's), (9, 10348),

Gene: GravityBall\_14 Start: 10649, Stop: 10888, Start Num: 7  
Candidate Starts for GravityBall\_14:  
(Start: 7 @10649 has 33 MA's), (9, 10679),

Gene: Grekaycon\_14 Start: 10661, Stop: 10900, Start Num: 7  
Candidate Starts for Grekaycon\_14:  
(3, 10553), (Start: 7 @10661 has 33 MA's), (9, 10691),

Gene: Hirko\_14 Start: 11651, Stop: 11887, Start Num: 7  
Candidate Starts for Hirko\_14:

(Start: 7 @11651 has 33 MA's),

Gene: JKerns\_14 Start: 10688, Stop: 10927, Start Num: 7  
Candidate Starts for JKerns\_14:  
(2, 10559), (3, 10580), (Start: 7 @10688 has 33 MA's), (9, 10718),

Gene: Jawnski\_13 Start: 10331, Stop: 10570, Start Num: 7  
Candidate Starts for Jawnski\_13:  
(Start: 7 @10331 has 33 MA's), (9, 10361),

Gene: Jinkies\_16 Start: 12256, Stop: 12480, Start Num: 7  
Candidate Starts for Jinkies\_16:  
(Start: 7 @12256 has 33 MA's), (8, 12268),

Gene: Jordan\_14 Start: 10658, Stop: 10897, Start Num: 7  
Candidate Starts for Jordan\_14:  
(1, 10472), (3, 10550), (Start: 7 @10658 has 33 MA's), (9, 10688),

Gene: King2\_13 Start: 10320, Stop: 10559, Start Num: 7  
Candidate Starts for King2\_13:  
(Start: 7 @10320 has 33 MA's), (9, 10350),

Gene: Klevey\_13 Start: 10022, Stop: 10228, Start Num: 7  
Candidate Starts for Klevey\_13:  
(Start: 7 @10022 has 33 MA's), (11, 10064), (12, 10067), (15, 10115),

Gene: LeeroyJ\_14 Start: 10649, Stop: 10888, Start Num: 7  
Candidate Starts for LeeroyJ\_14:  
(Start: 7 @10649 has 33 MA's), (9, 10679),

Gene: Lilmac1015\_13 Start: 10012, Stop: 10218, Start Num: 7  
Candidate Starts for Lilmac1015\_13:  
(Start: 7 @10012 has 33 MA's), (11, 10054), (12, 10057), (15, 10105),

Gene: Martha\_14 Start: 10599, Stop: 10838, Start Num: 7  
Candidate Starts for Martha\_14:  
(3, 10491), (Start: 7 @10599 has 33 MA's), (9, 10629),

Gene: NathanVaag\_13 Start: 10324, Stop: 10563, Start Num: 7  
Candidate Starts for NathanVaag\_13:  
(Start: 7 @10324 has 33 MA's), (9, 10354),

Gene: Piccoletto\_13 Start: 10325, Stop: 10564, Start Num: 7  
Candidate Starts for Piccoletto\_13:  
(Start: 7 @10325 has 33 MA's), (9, 10355),

Gene: Pippa\_14 Start: 10697, Stop: 10936, Start Num: 7  
Candidate Starts for Pippa\_14:  
(Start: 7 @10697 has 33 MA's), (9, 10727),

Gene: Prairie\_13 Start: 10019, Stop: 10225, Start Num: 7  
Candidate Starts for Prairie\_13:  
(Start: 7 @10019 has 33 MA's), (11, 10061), (12, 10064), (15, 10112), (16, 10130),

Gene: Shade\_14 Start: 10637, Stop: 10876, Start Num: 7  
Candidate Starts for Shade\_14:  
(3, 10529), (Start: 7 @10637 has 33 MA's), (9, 10667),

Gene: Sicarius2\_15 Start: 11144, Stop: 11380, Start Num: 7  
Candidate Starts for Sicarius2\_15:  
(Start: 7 @11144 has 33 MA's),

Gene: Sonny\_14 Start: 10658, Stop: 10897, Start Num: 7  
Candidate Starts for Sonny\_14:  
(2, 10529), (3, 10550), (Start: 7 @10658 has 33 MA's), (9, 10688),

Gene: StevieBAY\_14 Start: 10649, Stop: 10888, Start Num: 7  
Candidate Starts for StevieBAY\_14:  
(Start: 7 @10649 has 33 MA's), (9, 10679),

Gene: TaeYoung\_14 Start: 10662, Stop: 10901, Start Num: 7  
Candidate Starts for TaeYoung\_14:  
(3, 10554), (Start: 7 @10662 has 33 MA's), (9, 10692),

Gene: Timinator\_14 Start: 10649, Stop: 10888, Start Num: 7  
Candidate Starts for Timinator\_14:  
(Start: 7 @10649 has 33 MA's), (9, 10679),

Gene: Vibaki\_15 Start: 12095, Stop: 12331, Start Num: 7  
Candidate Starts for Vibaki\_15:  
(Start: 7 @12095 has 33 MA's),

Gene: Wyborn\_15 Start: 11005, Stop: 11241, Start Num: 7  
Candidate Starts for Wyborn\_15:  
(Start: 7 @11005 has 33 MA's),

Gene: Zartrosa\_14 Start: 10661, Stop: 10900, Start Num: 7  
Candidate Starts for Zartrosa\_14:  
(2, 10532), (3, 10553), (Start: 7 @10661 has 33 MA's), (9, 10691),