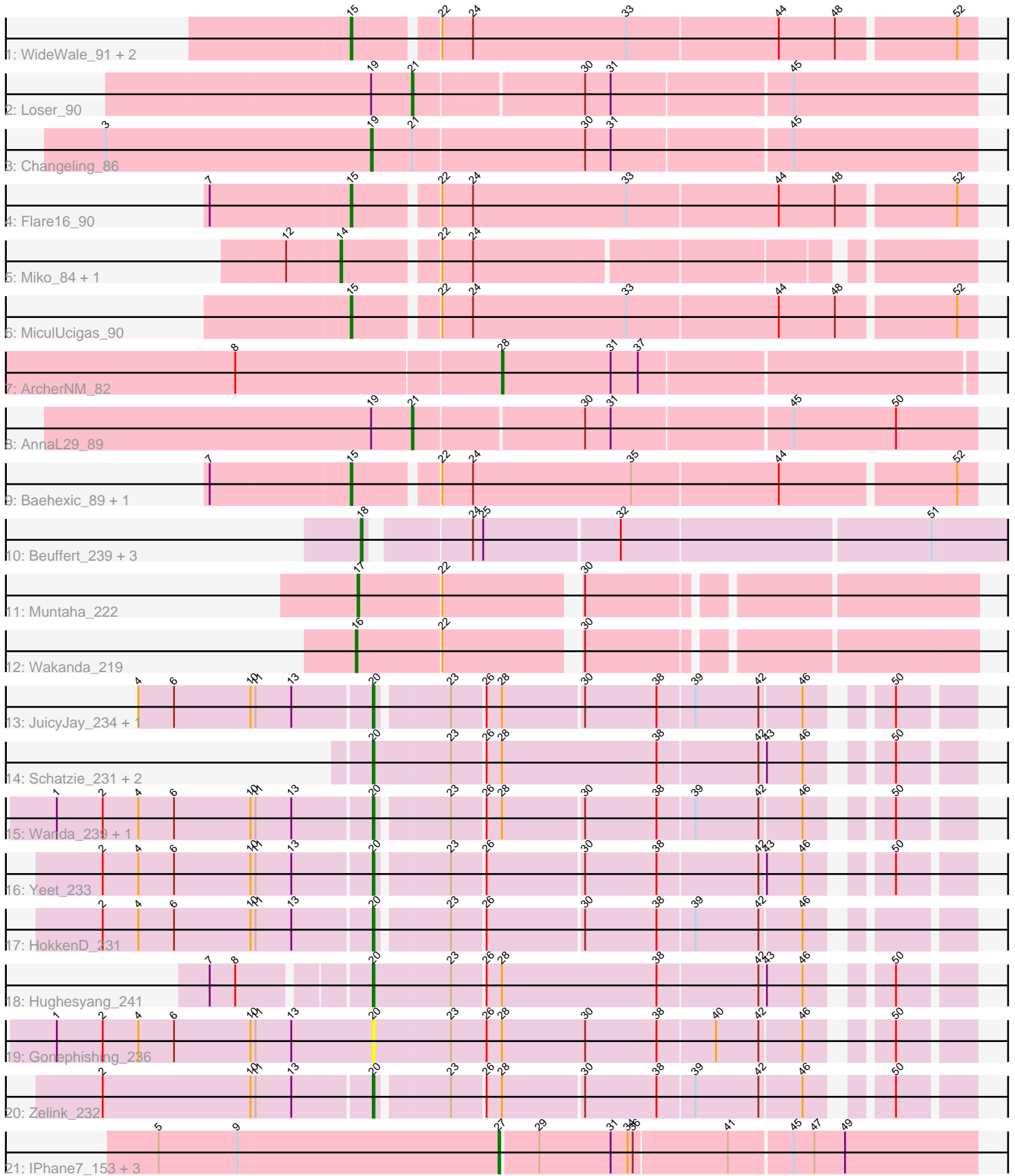


Pham 171635



Note: Tracks are now grouped by subcluster and scaled. Switching in subcluster is indicated by changes in track color. Track scale is now set by default to display the region 30 bp upstream of start 1 to 30 bp downstream of the last possible start. If this default region is judged to be packed too tightly with annotated starts, the track will be further scaled to only show that region of the ORF with annotated starts. This action will be indicated by adding "Zoomed" to the title. For starts, yellow indicates the location of called starts comprised solely of Glimmer/GeneMark auto-annotations, green indicates the location of called starts with at least 1 manual gene annotation.

Pham 171635 Report

This analysis was run 07/10/24 on database version 566.

Pham number 171635 has 35 members, 1 are drafts.

Phages represented in each track:

- Track 1 : WideWale_91, Equemioh13_90, Updawg_91
- Track 2 : Loser_90
- Track 3 : Changeling_86
- Track 4 : Flare16_90
- Track 5 : Miko_84, Rachaly_85
- Track 6 : MiculUcigas_90
- Track 7 : ArcherNM_82
- Track 8 : AnnaL29_89
- Track 9 : Baehexic_89, Centaur_90
- Track 10 : Beuffert_239, Blueeyedbeauty_241, Annadreamy_229, Limpid_236
- Track 11 : Muntaha_222
- Track 12 : Wakanda_219
- Track 13 : JuicyJay_234, Beem_242
- Track 14 : Schatzie_231, BAKA_241, Phoebus_237
- Track 15 : Wanda_239, Klein_247
- Track 16 : Yeet_233
- Track 17 : HokkenD_231
- Track 18 : Hughesyang_241
- Track 19 : Gonephishing_236
- Track 20 : Zelink_232
- Track 21 : IPhane7_153, TyDawg_149, Auspice_156, SlimJimmy_153

Summary of Final Annotations (See graph section above for start numbers):

The start number called the most often in the published annotations is 20, it was called in 11 of the 34 non-draft genes in the pham.

Genes that call this "Most Annotated" start:

- BAKA_241, Beem_242, Gonephishing_236, HokkenD_231, Hughesyang_241, JuicyJay_234, Klein_247, Phoebus_237, Schatzie_231, Wanda_239, Yeet_233, Zelink_232,

Genes that have the "Most Annotated" start but do not call it:

-

Genes that do not have the "Most Annotated" start:

- AnnaL29_89, Annadreamy_229, ArcherNM_82, Auspice_156, Baehexic_89, Beuffert_239, Blueeyedbeauty_241, Centaur_90, Changeling_86, Equemioh13_90, Flare16_90, IPhone7_153, Limpid_236, Loser_90, MiculUcigas_90, Miko_84, Muntaha_222, Rachaly_85, SlimJimmy_153, TyDawg_149, Updawg_91, Wakanda_219, WideWale_91,

Summary by start number:

Start 14:

- Found in 2 of 35 (5.7%) of genes in pham
- Manual Annotations of this start: 2 of 34
- Called 100.0% of time when present
- Phage (with cluster) where this start called: Miko_84 (A2), Rachaly_85 (A2),

Start 15:

- Found in 7 of 35 (20.0%) of genes in pham
- Manual Annotations of this start: 7 of 34
- Called 100.0% of time when present
- Phage (with cluster) where this start called: Baehexic_89 (A2), Centaur_90 (A2), Equemioh13_90 (A2), Flare16_90 (A2), MiculUcigas_90 (A2), Updawg_91 (A2), WideWale_91 (A2),

Start 16:

- Found in 1 of 35 (2.9%) of genes in pham
- Manual Annotations of this start: 1 of 34
- Called 100.0% of time when present
- Phage (with cluster) where this start called: Wakanda_219 (BK2),

Start 17:

- Found in 1 of 35 (2.9%) of genes in pham
- Manual Annotations of this start: 1 of 34
- Called 100.0% of time when present
- Phage (with cluster) where this start called: Muntaha_222 (BK2),

Start 18:

- Found in 4 of 35 (11.4%) of genes in pham
- Manual Annotations of this start: 4 of 34
- Called 100.0% of time when present
- Phage (with cluster) where this start called: Annadreamy_229 (BK1), Beuffert_239 (BK1), Blueeyedbeauty_241 (BK1), Limpid_236 (BK1),

Start 19:

- Found in 3 of 35 (8.6%) of genes in pham
- Manual Annotations of this start: 1 of 34
- Called 33.3% of time when present
- Phage (with cluster) where this start called: Changeling_86 (A2),

Start 20:

- Found in 12 of 35 (34.3%) of genes in pham
- Manual Annotations of this start: 11 of 34
- Called 100.0% of time when present

- Phage (with cluster) where this start called: BAKA_241 (J), Beem_242 (J), Gonephishing_236 (J), HokkenD_231 (J), Hughesyang_241 (J), JuicyJay_234 (J), Klein_247 (J), Phoebus_237 (J), Schatzie_231 (J), Wanda_239 (J), Yeet_233 (J), Zelink_232 (J),

Start 21:

- Found in 3 of 35 (8.6%) of genes in pham
- Manual Annotations of this start: 2 of 34
- Called 66.7% of time when present
- Phage (with cluster) where this start called: AnnaL29_89 (A2), Loser_90 (A2),

Start 27:

- Found in 4 of 35 (11.4%) of genes in pham
- Manual Annotations of this start: 4 of 34
- Called 100.0% of time when present
- Phage (with cluster) where this start called: Auspice_156 (M1), IPhone7_153 (M1), SlimJimmy_153 (M1), TyDawg_149 (M1),

Start 28:

- Found in 11 of 35 (31.4%) of genes in pham
- Manual Annotations of this start: 1 of 34
- Called 9.1% of time when present
- Phage (with cluster) where this start called: ArcherNM_82 (A2),

Summary by clusters:

There are 5 clusters represented in this pham: J, A2, M1, BK1, BK2,

Info for manual annotations of cluster A2:

- Start number 14 was manually annotated 2 times for cluster A2.
- Start number 15 was manually annotated 7 times for cluster A2.
- Start number 19 was manually annotated 1 time for cluster A2.
- Start number 21 was manually annotated 2 times for cluster A2.
- Start number 28 was manually annotated 1 time for cluster A2.

Info for manual annotations of cluster BK1:

- Start number 18 was manually annotated 4 times for cluster BK1.

Info for manual annotations of cluster BK2:

- Start number 16 was manually annotated 1 time for cluster BK2.
- Start number 17 was manually annotated 1 time for cluster BK2.

Info for manual annotations of cluster J:

- Start number 20 was manually annotated 11 times for cluster J.

Info for manual annotations of cluster M1:

- Start number 27 was manually annotated 4 times for cluster M1.

Gene Information:

Gene: AnnaL29_89 Start: 49609, Stop: 49292, Start Num: 21

Candidate Starts for AnnaL29_89:

(Start: 19 @49633 has 1 MA's), (Start: 21 @49609 has 2 MA's), (30, 49516), (31, 49501), (45, 49399), (50, 49339),

Gene: Annadreamy_229 Start: 111840, Stop: 112202, Start Num: 18

Candidate Starts for Annadreamy_229:

(Start: 18 @111840 has 4 MA's), (24, 111894), (25, 111900), (32, 111978), (51, 112155),

Gene: ArcherNM_82 Start: 48789, Stop: 48520, Start Num: 28

Candidate Starts for ArcherNM_82:

(8, 48936), (Start: 28 @48789 has 1 MA's), (31, 48726), (37, 48711),

Gene: Auspice_156 Start: 78089, Stop: 77817, Start Num: 27

Candidate Starts for Auspice_156:

(5, 78284), (9, 78239), (Start: 27 @78089 has 4 MA's), (29, 78068), (31, 78026), (34, 78017), (36, 78014), (41, 77960), (45, 77924), (47, 77912), (49, 77894),

Gene: BAKA_241 Start: 110720, Stop: 110400, Start Num: 20

Candidate Starts for BAKA_241:

(Start: 20 @110720 has 11 MA's), (23, 110675), (26, 110657), (Start: 28 @110648 has 1 MA's), (38, 110558), (42, 110501), (43, 110498), (46, 110477), (50, 110441),

Gene: Baehexic_89 Start: 49622, Stop: 49272, Start Num: 15

Candidate Starts for Baehexic_89:

(7, 49703), (Start: 15 @49622 has 7 MA's), (22, 49577), (24, 49559), (35, 49466), (44, 49382), (52, 49283),

Gene: Beem_242 Start: 112166, Stop: 111855, Start Num: 20

Candidate Starts for Beem_242:

(4, 112301), (6, 112280), (10, 112235), (11, 112232), (13, 112211), (Start: 20 @112166 has 11 MA's), (23, 112127), (26, 112109), (Start: 28 @112100 has 1 MA's), (30, 112055), (38, 112013), (39, 111992), (42, 111956), (46, 111932), (50, 111896),

Gene: Beuffert_239 Start: 116330, Stop: 116692, Start Num: 18

Candidate Starts for Beuffert_239:

(Start: 18 @116330 has 4 MA's), (24, 116384), (25, 116390), (32, 116468), (51, 116645),

Gene: Blueeyedbeauty_241 Start: 116156, Stop: 116518, Start Num: 18

Candidate Starts for Blueeyedbeauty_241:

(Start: 18 @116156 has 4 MA's), (24, 116210), (25, 116216), (32, 116294), (51, 116471),

Gene: Centaur_90 Start: 49489, Stop: 49139, Start Num: 15

Candidate Starts for Centaur_90:

(7, 49570), (Start: 15 @49489 has 7 MA's), (22, 49444), (24, 49426), (35, 49333), (44, 49249), (52, 49150),

Gene: Changeling_86 Start: 49621, Stop: 49277, Start Num: 19

Candidate Starts for Changeling_86:

(3, 49774), (Start: 19 @49621 has 1 MA's), (Start: 21 @49597 has 2 MA's), (30, 49501), (31, 49486), (45, 49384),

Gene: Equemioh13_90 Start: 49724, Stop: 49374, Start Num: 15

Candidate Starts for Equemioh13_90:

(Start: 15 @49724 has 7 MA's), (22, 49679), (24, 49661), (33, 49571), (44, 49484), (48, 49451), (52, 49385),

Gene: Flare16_90 Start: 49539, Stop: 49189, Start Num: 15

Candidate Starts for Flare16_90:

(7, 49620), (Start: 15 @49539 has 7 MA's), (22, 49494), (24, 49476), (33, 49386), (44, 49299), (48, 49266), (52, 49200),

Gene: Gonephishing_236 Start: 109863, Stop: 109540, Start Num: 20

Candidate Starts for Gonephishing_236:

(1, 110049), (2, 110022), (4, 110001), (6, 109980), (10, 109935), (11, 109932), (13, 109911), (Start: 20 @109863 has 11 MA's), (23, 109818), (26, 109797), (Start: 28 @109788 has 1 MA's), (30, 109740), (38, 109698), (40, 109665), (42, 109641), (46, 109617), (50, 109581),

Gene: HokkenD_231 Start: 112106, Stop: 111795, Start Num: 20

Candidate Starts for HokkenD_231:

(2, 112262), (4, 112241), (6, 112220), (10, 112175), (11, 112172), (13, 112151), (Start: 20 @112106 has 11 MA's), (23, 112067), (26, 112049), (30, 111995), (38, 111953), (39, 111932), (42, 111896), (46, 111872),

Gene: Hughesyang_241 Start: 112144, Stop: 111824, Start Num: 20

Candidate Starts for Hughesyang_241:

(7, 112228), (8, 112213), (Start: 20 @112144 has 11 MA's), (23, 112099), (26, 112081), (Start: 28 @112072 has 1 MA's), (38, 111982), (42, 111925), (43, 111922), (46, 111901), (50, 111865),

Gene: IPHane7_153 Start: 77705, Stop: 77433, Start Num: 27

Candidate Starts for IPHane7_153:

(5, 77900), (9, 77855), (Start: 27 @77705 has 4 MA's), (29, 77684), (31, 77642), (34, 77633), (36, 77630), (41, 77576), (45, 77540), (47, 77528), (49, 77510),

Gene: JuicyJay_234 Start: 112115, Stop: 111804, Start Num: 20

Candidate Starts for JuicyJay_234:

(4, 112250), (6, 112229), (10, 112184), (11, 112181), (13, 112160), (Start: 20 @112115 has 11 MA's), (23, 112076), (26, 112058), (Start: 28 @112049 has 1 MA's), (30, 112004), (38, 111962), (39, 111941), (42, 111905), (46, 111881), (50, 111845),

Gene: Klein_247 Start: 111346, Stop: 111035, Start Num: 20

Candidate Starts for Klein_247:

(1, 111529), (2, 111502), (4, 111481), (6, 111460), (10, 111415), (11, 111412), (13, 111391), (Start: 20 @111346 has 11 MA's), (23, 111307), (26, 111289), (Start: 28 @111280 has 1 MA's), (30, 111235), (38, 111193), (39, 111172), (42, 111136), (46, 111112), (50, 111076),

Gene: Limpid_236 Start: 117153, Stop: 117515, Start Num: 18

Candidate Starts for Limpid_236:

(Start: 18 @117153 has 4 MA's), (24, 117207), (25, 117213), (32, 117291), (51, 117468),

Gene: Loser_90 Start: 49859, Stop: 49542, Start Num: 21

Candidate Starts for Loser_90:

(Start: 19 @49883 has 1 MA's), (Start: 21 @49859 has 2 MA's), (30, 49766), (31, 49751), (45, 49649),

Gene: MiculUcigas_90 Start: 49442, Stop: 49092, Start Num: 15

Candidate Starts for MiculUcigas_90:

(Start: 15 @49442 has 7 MA's), (22, 49397), (24, 49379), (33, 49289), (44, 49202), (48, 49169), (52, 49103),

Gene: Miko_84 Start: 48454, Stop: 48119, Start Num: 14

Candidate Starts for Miko_84:

(12, 48484), (Start: 14 @48454 has 2 MA's), (22, 48403), (24, 48385),

Gene: Muntaha_222 Start: 108668, Stop: 109000, Start Num: 17

Candidate Starts for Muntaha_222:

(Start: 17 @108668 has 1 MA's), (22, 108716), (30, 108788),

Gene: Phoebus_237 Start: 113352, Stop: 113032, Start Num: 20

Candidate Starts for Phoebus_237:

(Start: 20 @113352 has 11 MA's), (23, 113307), (26, 113289), (Start: 28 @113280 has 1 MA's), (38, 113190), (42, 113133), (43, 113130), (46, 113109), (50, 113073),

Gene: Rachaly_85 Start: 48597, Stop: 48262, Start Num: 14

Candidate Starts for Rachaly_85:

(12, 48627), (Start: 14 @48597 has 2 MA's), (22, 48546), (24, 48528),

Gene: Schatzie_231 Start: 110377, Stop: 110057, Start Num: 20

Candidate Starts for Schatzie_231:

(Start: 20 @110377 has 11 MA's), (23, 110332), (26, 110314), (Start: 28 @110305 has 1 MA's), (38, 110215), (42, 110158), (43, 110155), (46, 110134), (50, 110098),

Gene: SlimJimmy_153 Start: 78262, Stop: 77990, Start Num: 27

Candidate Starts for SlimJimmy_153:

(5, 78457), (9, 78412), (Start: 27 @78262 has 4 MA's), (29, 78241), (31, 78199), (34, 78190), (36, 78187), (41, 78133), (45, 78097), (47, 78085), (49, 78067),

Gene: TyDawg_149 Start: 77708, Stop: 77436, Start Num: 27

Candidate Starts for TyDawg_149:

(5, 77903), (9, 77858), (Start: 27 @77708 has 4 MA's), (29, 77687), (31, 77645), (34, 77636), (36, 77633), (41, 77579), (45, 77543), (47, 77531), (49, 77513),

Gene: Updawg_91 Start: 49724, Stop: 49374, Start Num: 15

Candidate Starts for Updawg_91:

(Start: 15 @49724 has 7 MA's), (22, 49679), (24, 49661), (33, 49571), (44, 49484), (48, 49451), (52, 49385),

Gene: Wakanda_219 Start: 108031, Stop: 108363, Start Num: 16

Candidate Starts for Wakanda_219:

(Start: 16 @108031 has 1 MA's), (22, 108079), (30, 108151),

Gene: Wanda_239 Start: 108976, Stop: 108665, Start Num: 20

Candidate Starts for Wanda_239:

(1, 109159), (2, 109132), (4, 109111), (6, 109090), (10, 109045), (11, 109042), (13, 109021), (Start: 20 @108976 has 11 MA's), (23, 108937), (26, 108919), (Start: 28 @108910 has 1 MA's), (30, 108865), (38, 108823), (39, 108802), (42, 108766), (46, 108742), (50, 108706),

Gene: WideWale_91 Start: 49724, Stop: 49374, Start Num: 15

Candidate Starts for WideWale_91:

(Start: 15 @49724 has 7 MA's), (22, 49679), (24, 49661), (33, 49571), (44, 49484), (48, 49451), (52, 49385),

Gene: Yeet_233 Start: 110472, Stop: 110161, Start Num: 20

Candidate Starts for Yeet_233:

(2, 110628), (4, 110607), (6, 110586), (10, 110541), (11, 110538), (13, 110517), (Start: 20 @110472 has 11 MA's), (23, 110433), (26, 110415), (30, 110361), (38, 110319), (42, 110262), (43, 110259), (46, 110238), (50, 110202),

Gene: Zelink_232 Start: 110059, Stop: 109748, Start Num: 20

Candidate Starts for Zelink_232:

(2, 110215), (10, 110128), (11, 110125), (13, 110104), (Start: 20 @110059 has 11 MA's), (23, 110020), (26, 110002), (Start: 28 @109993 has 1 MA's), (30, 109948), (38, 109906), (39, 109885), (42, 109849), (46, 109825), (50, 109789),