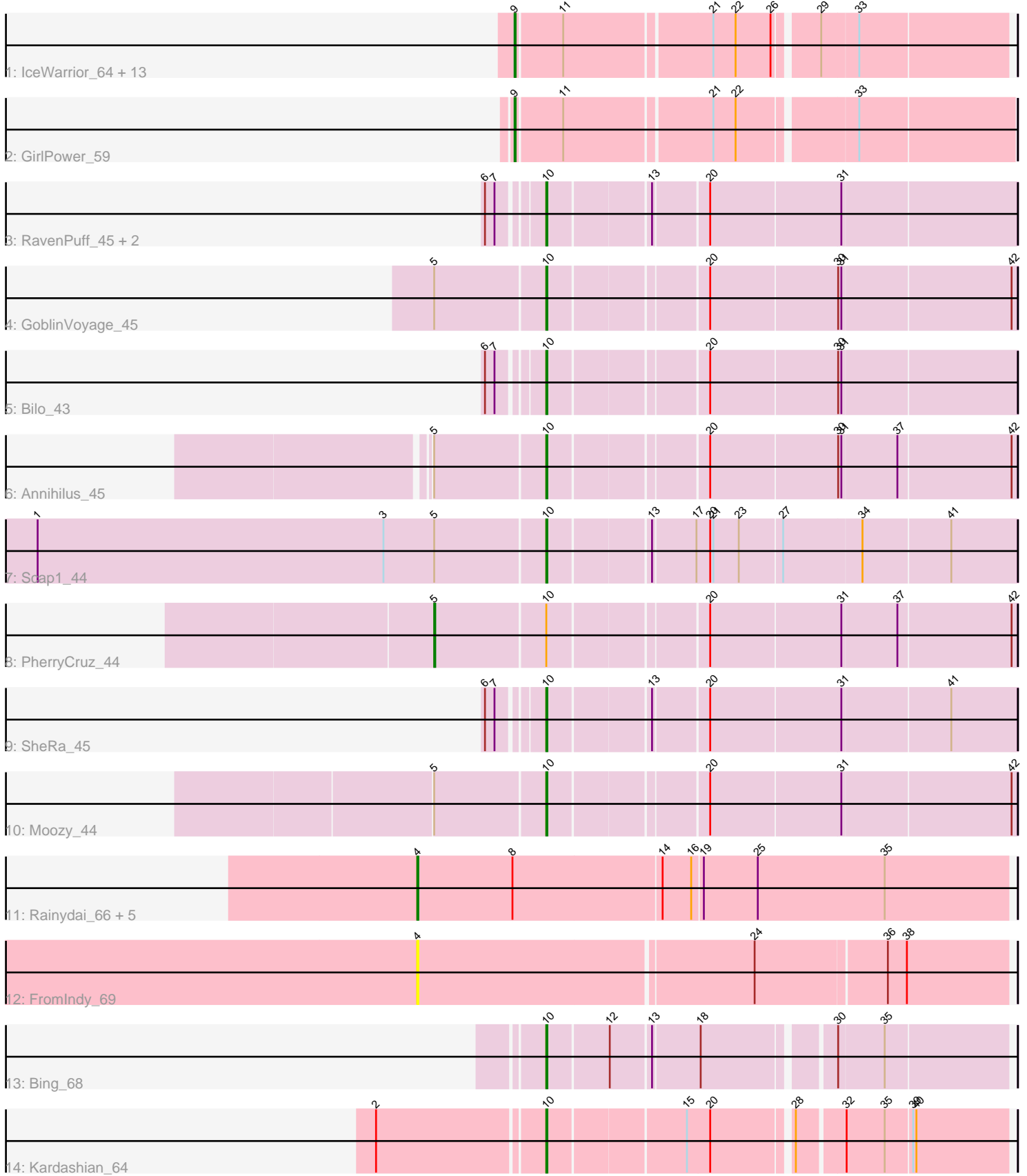


Pham 171644



Note: Tracks are now grouped by subcluster and scaled. Switching in subcluster is indicated by changes in track color. Track scale is now set by default to display the region 30 bp upstream of start 1 to 30 bp downstream of the last possible start. If this default region is judged to be packed too tightly with annotated starts, the track will be further scaled to only show that region of the ORF with annotated starts. This action will be indicated by adding "Zoomed" to the title. For starts, yellow indicates the location of called starts comprised solely of Glimmer/GeneMark auto-annotations, green indicates the location of called starts with at least 1 manual gene annotation.

Pham 171644 Report

This analysis was run 07/10/24 on database version 566.

Pham number 171644 has 34 members, 2 are drafts.

Phages represented in each track:

- Track 1 : IceWarrior_64, Hoshi_66, Namu_66, Indigenous_67, CherryBlossom_65, Rima_66, TaidaOne_67, Meibysrarus_63, TonyStarch_64, OlympicHelado_67, Spectropatronm_65, FidgetOrca_67, Jaylociraptor_65, Maya_65
- Track 2 : GirlPower_59
- Track 3 : RavenPuff_45, HotFries_44, Doxi13_46
- Track 4 : GoblinVoyage_45
- Track 5 : Bilo_43
- Track 6 : Annihilus_45
- Track 7 : Scap1_44
- Track 8 : PherryCruz_44
- Track 9 : SheRa_45
- Track 10 : Moozy_44
- Track 11 : Rainydai_66, CricKo_68, Miek_64, Thiqqums_68, Regigigas_68, SendItCS_63
- Track 12 : FromIndy_69
- Track 13 : Bing_68
- Track 14 : Kardashian_64

Summary of Final Annotations (See graph section above for start numbers):

The start number called the most often in the published annotations is 9, it was called in 15 of the 32 non-draft genes in the pham.

Genes that call this "Most Annotated" start:

- CherryBlossom_65, FidgetOrca_67, GirlPower_59, Hoshi_66, IceWarrior_64, Indigenous_67, Jaylociraptor_65, Maya_65, Meibysrarus_63, Namu_66, OlympicHelado_67, Rima_66, Spectropatronm_65, TaidaOne_67, TonyStarch_64,

Genes that have the "Most Annotated" start but do not call it:

-

Genes that do not have the "Most Annotated" start:

- Annihilus_45, Bilo_43, Bing_68, CricKo_68, Doxi13_46, FromIndy_69, GoblinVoyage_45, HotFries_44, Kardashian_64, Miek_64, Moozy_44,

PherryCruz_44, Rainydai_66, RavenPuff_45, Regigigas_68, Scap1_44, SendItCS_63, SheRa_45, Thiqqums_68,

Summary by start number:

Start 4:

- Found in 7 of 34 (20.6%) of genes in pham
- Manual Annotations of this start: 5 of 32
- Called 100.0% of time when present
- Phage (with cluster) where this start called: CricKo_68 (BI4), FromIndy_69 (BI4), Miek_64 (BI4), Rainydai_66 (BI4), Regigigas_68 (BI4), SendItCS_63 (BI4), Thiqqums_68 (BI4),

Start 5:

- Found in 5 of 34 (14.7%) of genes in pham
- Manual Annotations of this start: 1 of 32
- Called 20.0% of time when present
- Phage (with cluster) where this start called: PherryCruz_44 (BI2),

Start 9:

- Found in 15 of 34 (44.1%) of genes in pham
- Manual Annotations of this start: 15 of 32
- Called 100.0% of time when present
- Phage (with cluster) where this start called: CherryBlossom_65 (BI1), FidgetOrca_67 (BI1), GirlPower_59 (BI1), Hoshi_66 (BI1), IceWarrior_64 (BI1), Indigenous_67 (BI1), Jaylociraptor_65 (BI1), Maya_65 (BI1), Meibysrarus_63 (BI1), Namu_66 (BI1), OlympicHelado_67 (BI1), Rima_66 (BI1), Spectropatronm_65 (BI1), TaidaOne_67 (BI1), TonyStarch_64 (BI1),

Start 10:

- Found in 12 of 34 (35.3%) of genes in pham
- Manual Annotations of this start: 11 of 32
- Called 91.7% of time when present
- Phage (with cluster) where this start called: Annihilus_45 (BI2), Bilo_43 (BI2), Bing_68 (BI5), Doxi13_46 (BI2), GoblinVoyage_45 (BI2), HotFries_44 (BI2), Kardashian_64 (BI6), Moozy_44 (BI2), RavenPuff_45 (BI2), Scap1_44 (BI2), SheRa_45 (BI2),

Summary by clusters:

There are 5 clusters represented in this pham: BI6, BI4, BI5, BI2, BI1,

Info for manual annotations of cluster BI1:

- Start number 9 was manually annotated 15 times for cluster BI1.

Info for manual annotations of cluster BI2:

- Start number 5 was manually annotated 1 time for cluster BI2.
- Start number 10 was manually annotated 9 times for cluster BI2.

Info for manual annotations of cluster BI4:

- Start number 4 was manually annotated 5 times for cluster BI4.

Info for manual annotations of cluster BI5:

- Start number 10 was manually annotated 1 time for cluster BI5.

Info for manual annotations of cluster BI6:

- Start number 10 was manually annotated 1 time for cluster BI6.

Gene Information:

Gene: Annihilus_45 Start: 34571, Stop: 34990, Start Num: 10

Candidate Starts for Annihilus_45:

(Start: 5 @34469 has 1 MA's), (Start: 10 @34571 has 11 MA's), (20, 34709), (30, 34826), (31, 34829), (37, 34880), (42, 34985),

Gene: Bilo_43 Start: 34722, Stop: 35141, Start Num: 10

Candidate Starts for Bilo_43:

(6, 34677), (7, 34686), (Start: 10 @34722 has 11 MA's), (20, 34860), (30, 34977), (31, 34980),

Gene: Bing_68 Start: 43846, Stop: 44244, Start Num: 10

Candidate Starts for Bing_68:

(Start: 10 @43846 has 11 MA's), (12, 43900), (13, 43936), (18, 43978), (30, 44089), (35, 44131),

Gene: CherryBlossom_65 Start: 42942, Stop: 43376, Start Num: 9

Candidate Starts for CherryBlossom_65:

(Start: 9 @42942 has 15 MA's), (11, 42984), (21, 43116), (22, 43137), (26, 43170), (29, 43206), (33, 43239),

Gene: CricKo_68 Start: 43242, Stop: 43793, Start Num: 4

Candidate Starts for CricKo_68:

(Start: 4 @43242 has 5 MA's), (8, 43332), (14, 43470), (16, 43497), (19, 43506), (25, 43557), (35, 43677),

Gene: Doxi13_46 Start: 34768, Stop: 35187, Start Num: 10

Candidate Starts for Doxi13_46:

(6, 34723), (7, 34732), (Start: 10 @34768 has 11 MA's), (13, 34858), (20, 34906), (31, 35026),

Gene: FidgetOrca_67 Start: 43478, Stop: 43912, Start Num: 9

Candidate Starts for FidgetOrca_67:

(Start: 9 @43478 has 15 MA's), (11, 43520), (21, 43652), (22, 43673), (26, 43706), (29, 43742), (33, 43775),

Gene: FromIndy_69 Start: 42844, Stop: 43386, Start Num: 4

Candidate Starts for FromIndy_69:

(Start: 4 @42844 has 5 MA's), (24, 43153), (36, 43273), (38, 43291),

Gene: GirlPower_59 Start: 43211, Stop: 43651, Start Num: 9

Candidate Starts for GirlPower_59:

(Start: 9 @43211 has 15 MA's), (11, 43253), (21, 43385), (22, 43406), (33, 43508),

Gene: GoblinVoyage_45 Start: 34559, Stop: 34978, Start Num: 10

Candidate Starts for GoblinVoyage_45:

(Start: 5 @34457 has 1 MA's), (Start: 10 @34559 has 11 MA's), (20, 34697), (30, 34814), (31, 34817), (42, 34973),

Gene: Hoshi_66 Start: 43085, Stop: 43519, Start Num: 9
Candidate Starts for Hoshi_66:
(Start: 9 @43085 has 15 MA's), (11, 43127), (21, 43259), (22, 43280), (26, 43313), (29, 43349), (33, 43382),

Gene: HotFries_44 Start: 34745, Stop: 35164, Start Num: 10
Candidate Starts for HotFries_44:
(6, 34700), (7, 34709), (Start: 10 @34745 has 11 MA's), (13, 34835), (20, 34883), (31, 35003),

Gene: IceWarrior_64 Start: 42761, Stop: 43195, Start Num: 9
Candidate Starts for IceWarrior_64:
(Start: 9 @42761 has 15 MA's), (11, 42803), (21, 42935), (22, 42956), (26, 42989), (29, 43025), (33, 43058),

Gene: Indigenous_67 Start: 43482, Stop: 43916, Start Num: 9
Candidate Starts for Indigenous_67:
(Start: 9 @43482 has 15 MA's), (11, 43524), (21, 43656), (22, 43677), (26, 43710), (29, 43746), (33, 43779),

Gene: Jaylociraptor_65 Start: 43078, Stop: 43512, Start Num: 9
Candidate Starts for Jaylociraptor_65:
(Start: 9 @43078 has 15 MA's), (11, 43120), (21, 43252), (22, 43273), (26, 43306), (29, 43342), (33, 43375),

Gene: Kardashian_64 Start: 43749, Stop: 44150, Start Num: 10
Candidate Starts for Kardashian_64:
(2, 43602), (Start: 10 @43749 has 11 MA's), (15, 43872), (20, 43893), (28, 43962), (32, 44001), (35, 44037), (39, 44061), (40, 44064),

Gene: Maya_65 Start: 43092, Stop: 43526, Start Num: 9
Candidate Starts for Maya_65:
(Start: 9 @43092 has 15 MA's), (11, 43134), (21, 43266), (22, 43287), (26, 43320), (29, 43356), (33, 43389),

Gene: Meibysrarus_63 Start: 42455, Stop: 42889, Start Num: 9
Candidate Starts for Meibysrarus_63:
(Start: 9 @42455 has 15 MA's), (11, 42497), (21, 42629), (22, 42650), (26, 42683), (29, 42719), (33, 42752),

Gene: Miek_64 Start: 42024, Stop: 42575, Start Num: 4
Candidate Starts for Miek_64:
(Start: 4 @42024 has 5 MA's), (8, 42114), (14, 42252), (16, 42279), (19, 42288), (25, 42339), (35, 42459),

Gene: Moozy_44 Start: 34555, Stop: 34974, Start Num: 10
Candidate Starts for Moozy_44:
(Start: 5 @34453 has 1 MA's), (Start: 10 @34555 has 11 MA's), (20, 34693), (31, 34813), (42, 34969),

Gene: Namo_66 Start: 43429, Stop: 43863, Start Num: 9
Candidate Starts for Namo_66:
(Start: 9 @43429 has 15 MA's), (11, 43471), (21, 43603), (22, 43624), (26, 43657), (29, 43693), (33, 43726),

Gene: OlympicHelado_67 Start: 43545, Stop: 43979, Start Num: 9

Candidate Starts for OlympicHelado_67:

(Start: 9 @43545 has 15 MA's), (11, 43587), (21, 43719), (22, 43740), (26, 43773), (29, 43809), (33, 43842),

Gene: PherryCruz_44 Start: 34642, Stop: 35163, Start Num: 5

Candidate Starts for PherryCruz_44:

(Start: 5 @34642 has 1 MA's), (Start: 10 @34744 has 11 MA's), (20, 34882), (31, 35002), (37, 35053), (42, 35158),

Gene: Rainydai_66 Start: 43242, Stop: 43793, Start Num: 4

Candidate Starts for Rainydai_66:

(Start: 4 @43242 has 5 MA's), (8, 43332), (14, 43470), (16, 43497), (19, 43506), (25, 43557), (35, 43677),

Gene: RavenPuff_45 Start: 34764, Stop: 35183, Start Num: 10

Candidate Starts for RavenPuff_45:

(6, 34719), (7, 34728), (Start: 10 @34764 has 11 MA's), (13, 34854), (20, 34902), (31, 35022),

Gene: Regigigas_68 Start: 42854, Stop: 43405, Start Num: 4

Candidate Starts for Regigigas_68:

(Start: 4 @42854 has 5 MA's), (8, 42944), (14, 43082), (16, 43109), (19, 43118), (25, 43169), (35, 43289),

Gene: Rima_66 Start: 43429, Stop: 43863, Start Num: 9

Candidate Starts for Rima_66:

(Start: 9 @43429 has 15 MA's), (11, 43471), (21, 43603), (22, 43624), (26, 43657), (29, 43693), (33, 43726),

Gene: Scap1_44 Start: 34342, Stop: 34764, Start Num: 10

Candidate Starts for Scap1_44:

(1, 33865), (3, 34192), (Start: 5 @34240 has 1 MA's), (Start: 10 @34342 has 11 MA's), (13, 34432), (17, 34471), (20, 34483), (21, 34486), (23, 34510), (27, 34549), (34, 34621), (41, 34702),

Gene: SendItCS_63 Start: 42012, Stop: 42563, Start Num: 4

Candidate Starts for SendItCS_63:

(Start: 4 @42012 has 5 MA's), (8, 42102), (14, 42240), (16, 42267), (19, 42276), (25, 42327), (35, 42447),

Gene: SheRa_45 Start: 34622, Stop: 35041, Start Num: 10

Candidate Starts for SheRa_45:

(6, 34577), (7, 34586), (Start: 10 @34622 has 11 MA's), (13, 34712), (20, 34760), (31, 34880), (41, 34979),

Gene: Spectropatronm_65 Start: 43085, Stop: 43519, Start Num: 9

Candidate Starts for Spectropatronm_65:

(Start: 9 @43085 has 15 MA's), (11, 43127), (21, 43259), (22, 43280), (26, 43313), (29, 43349), (33, 43382),

Gene: TaidaOne_67 Start: 43991, Stop: 44425, Start Num: 9

Candidate Starts for TaidaOne_67:

(Start: 9 @43991 has 15 MA's), (11, 44033), (21, 44165), (22, 44186), (26, 44219), (29, 44255), (33, 44288),

Gene: Thiqqums_68 Start: 43242, Stop: 43793, Start Num: 4

Candidate Starts for Thiqqums_68:

(Start: 4 @43242 has 5 MA's), (8, 43332), (14, 43470), (16, 43497), (19, 43506), (25, 43557), (35, 43677),

Gene: TonyStarch_64 Start: 42827, Stop: 43261, Start Num: 9

Candidate Starts for TonyStarch_64:

(Start: 9 @42827 has 15 MA's), (11, 42869), (21, 43001), (22, 43022), (26, 43055), (29, 43091), (33, 43124),