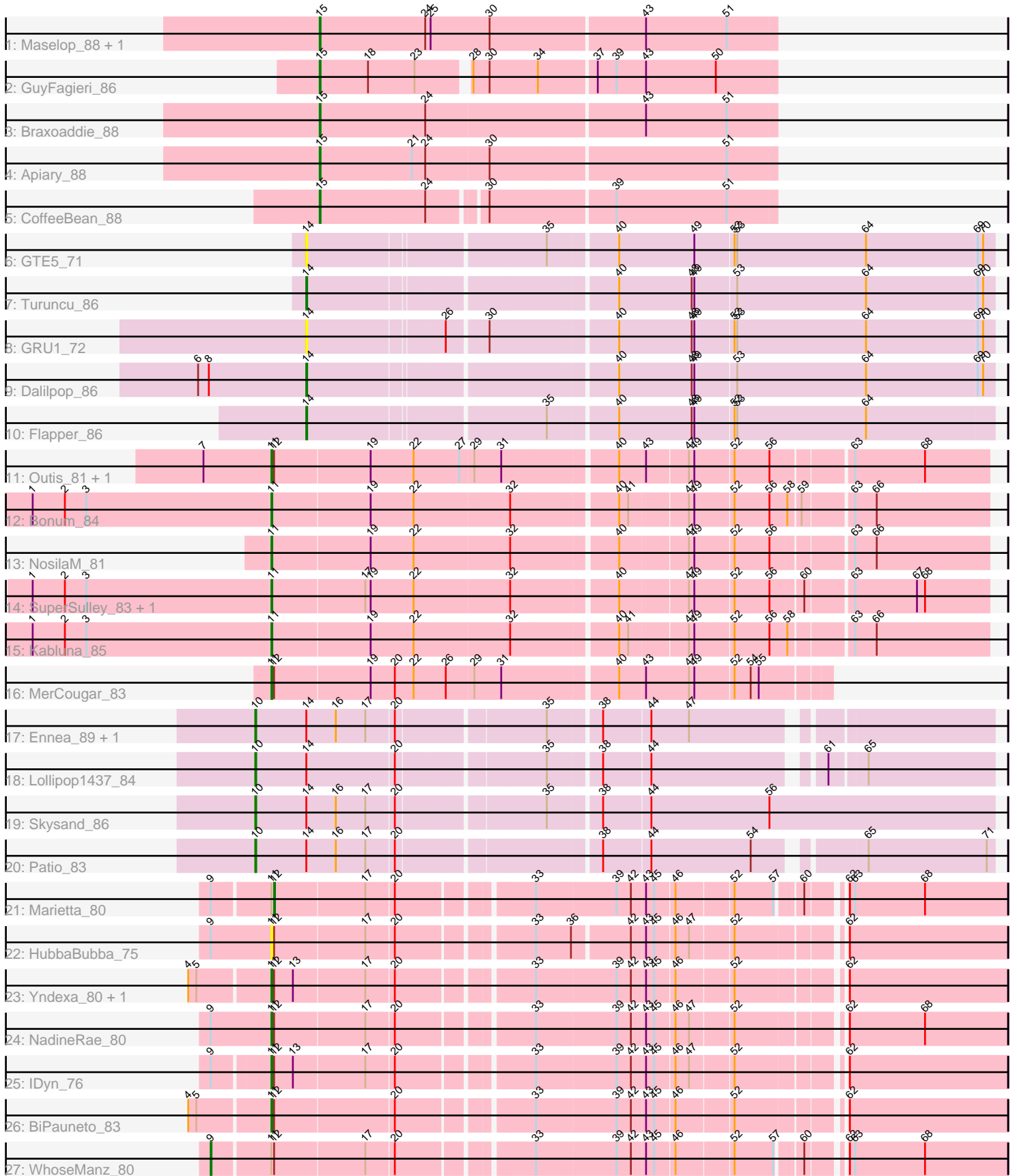


# Pham 171658



Note: Tracks are now grouped by subcluster and scaled. Switching in subcluster is indicated by changes in track color. Track scale is now set by default to display the region 30 bp upstream of start 1 to 30 bp downstream of the last possible start. If this default region is judged to be packed too tightly with annotated starts, the track will be further scaled to only show that region of the ORF with annotated starts. This action will be indicated by adding "Zoomed" to the title. For starts, yellow indicates the location of called starts comprised solely of Glimmer/GeneMark auto-annotations, green indicates the location of called starts with at least 1 manual gene annotation.

## Pham 171658 Report

This analysis was run 07/10/24 on database version 566.

Pham number 171658 has 32 members, 3 are drafts.

Phages represented in each track:

- Track 1 : Maselop\_88, Polyuyuki\_87
- Track 2 : GuyFagieri\_86
- Track 3 : Braxoaddie\_88
- Track 4 : Apiary\_88
- Track 5 : CoffeeBean\_88
- Track 6 : GTE5\_71
- Track 7 : Turuncu\_86
- Track 8 : GRU1\_72
- Track 9 : Dalilpop\_86
- Track 10 : Flapper\_86
- Track 11 : Outis\_81, StarStruck\_81
- Track 12 : Bonum\_84
- Track 13 : NosilaM\_81
- Track 14 : SuperSulley\_83, Buggaboo\_83
- Track 15 : Kabluna\_85
- Track 16 : MerCougar\_83
- Track 17 : Ennea\_89, Float294\_83
- Track 18 : Lollipop1437\_84
- Track 19 : Skysand\_86
- Track 20 : Patio\_83
- Track 21 : Marietta\_80
- Track 22 : HubbaBubba\_75
- Track 23 : Yndexa\_80, Sukkupi\_80
- Track 24 : NadineRae\_80
- Track 25 : IDyn\_76
- Track 26 : BiPauneto\_83
- Track 27 : WhoseManz\_80

### ***Summary of Final Annotations (See graph section above for start numbers):***

The start number called the most often in the published annotations is 11, it was called in 13 of the 29 non-draft genes in the pham.

Genes that call this "Most Annotated" start:

- BiPauneto\_83, Bonum\_84, Buggaboo\_83, HubbaBubba\_75, IDyn\_76, Kabluna\_85, MerCougar\_83, NadineRae\_80, NosilaM\_81, Outis\_81, StarStruck\_81, Sukkupi\_80, SuperSulley\_83, Yndexa\_80,

Genes that have the "Most Annotated" start but do not call it:

- Marietta\_80, WhoseManz\_80,

Genes that do not have the "Most Annotated" start:

- Apiary\_88, Braxoaddie\_88, CoffeeBean\_88, Dalilpop\_86, Ennea\_89, Flapper\_86, Float294\_83, GRU1\_72, GTE5\_71, GuyFagieri\_86, Lollipop1437\_84, Maselop\_88, Patio\_83, Polyyuki\_87, Skysand\_86, Turuncu\_86,

### Summary by start number:

Start 9:

- Found in 5 of 32 ( 15.6% ) of genes in pham
- Manual Annotations of this start: 1 of 29
- Called 20.0% of time when present
- Phage (with cluster) where this start called: WhoseManz\_80 (CR4),

Start 10:

- Found in 5 of 32 ( 15.6% ) of genes in pham
- Manual Annotations of this start: 5 of 29
- Called 100.0% of time when present
- Phage (with cluster) where this start called: Ennea\_89 (CR3), Float294\_83 (CR3), Lollipop1437\_84 (CR3), Patio\_83 (CR3), Skysand\_86 (CR3),

Start 11:

- Found in 16 of 32 ( 50.0% ) of genes in pham
- Manual Annotations of this start: 13 of 29
- Called 87.5% of time when present
- Phage (with cluster) where this start called: BiPauneto\_83 (CR4), Bonum\_84 (CR2), Buggaboo\_83 (CR2), HubbaBubba\_75 (CR4), IDyn\_76 (CR4), Kabluna\_85 (CR2), MerCougar\_83 (CR2), NadineRae\_80 (CR4), NosilaM\_81 (CR2), Outis\_81 (CR2), StarStruck\_81 (CR2), Sukkupi\_80 (CR4), SuperSulley\_83 (CR2), Yndexa\_80 (CR4),

Start 12:

- Found in 11 of 32 ( 34.4% ) of genes in pham
- Manual Annotations of this start: 1 of 29
- Called 9.1% of time when present
- Phage (with cluster) where this start called: Marietta\_80 (CR4),

Start 14:

- Found in 10 of 32 ( 31.2% ) of genes in pham
- Manual Annotations of this start: 3 of 29
- Called 50.0% of time when present
- Phage (with cluster) where this start called: Dalilpop\_86 (CR1), Flapper\_86 (CR1), GRU1\_72 (CR1), GTE5\_71 (CR1), Turuncu\_86 (CR1),

Start 15:

- Found in 6 of 32 ( 18.8% ) of genes in pham
- Manual Annotations of this start: 6 of 29
- Called 100.0% of time when present

- Phage (with cluster) where this start called: Apiary\_88 (CR), Braxoaddie\_88 (CR), CoffeeBean\_88 (CR), GuyFagieri\_86 (CR), Maselop\_88 (CR), Polyuyuki\_87 (CR),

### **Summary by clusters:**

There are 5 clusters represented in this pham: CR2, CR, CR1, CR4, CR3,

Info for manual annotations of cluster CR:

- Start number 15 was manually annotated 6 times for cluster CR.

Info for manual annotations of cluster CR1:

- Start number 14 was manually annotated 3 times for cluster CR1.

Info for manual annotations of cluster CR2:

- Start number 11 was manually annotated 8 times for cluster CR2.

Info for manual annotations of cluster CR3:

- Start number 10 was manually annotated 5 times for cluster CR3.

Info for manual annotations of cluster CR4:

- Start number 9 was manually annotated 1 time for cluster CR4.
- Start number 11 was manually annotated 5 times for cluster CR4.
- Start number 12 was manually annotated 1 time for cluster CR4.

### **Gene Information:**

Gene: Apiary\_88 Start: 61595, Stop: 62092, Start Num: 15

Candidate Starts for Apiary\_88:

(Start: 15 @61595 has 6 MA's), (21, 61697), (24, 61712), (30, 61781), (51, 62039),

Gene: BiPauneto\_83 Start: 59069, Stop: 59824, Start Num: 11

Candidate Starts for BiPauneto\_83:

(4, 58985), (5, 58994), (Start: 11 @59069 has 13 MA's), (Start: 12 @59072 has 1 MA's), (20, 59201), (33, 59336), (39, 59423), (42, 59438), (43, 59453), (45, 59462), (46, 59483), (52, 59543), (62, 59648),

Gene: Bonum\_84 Start: 60988, Stop: 61746, Start Num: 11

Candidate Starts for Bonum\_84:

(1, 60724), (2, 60760), (3, 60784), (Start: 11 @60988 has 13 MA's), (19, 61096), (22, 61144), (32, 61249), (40, 61360), (41, 61369), (47, 61432), (49, 61438), (52, 61477), (56, 61516), (58, 61534), (59, 61546), (63, 61597), (66, 61621),

Gene: Braxoaddie\_88 Start: 61593, Stop: 62090, Start Num: 15

Candidate Starts for Braxoaddie\_88:

(Start: 15 @61593 has 6 MA's), (24, 61710), (43, 61947), (51, 62037),

Gene: Buggaboo\_83 Start: 61523, Stop: 62281, Start Num: 11

Candidate Starts for Buggaboo\_83:

(1, 61259), (2, 61295), (3, 61319), (Start: 11 @61523 has 13 MA's), (17, 61625), (19, 61631), (22, 61679), (32, 61784), (40, 61895), (47, 61967), (49, 61973), (52, 62012), (56, 62051), (60, 62084), (63, 62132), (67, 62201), (68, 62210),

Gene: CoffeeBean\_88 Start: 61550, Stop: 62035, Start Num: 15  
Candidate Starts for CoffeeBean\_88:  
(Start: 15 @61550 has 6 MA's), (24, 61667), (30, 61724), (39, 61859), (51, 61982),

Gene: Dalilpop\_86 Start: 61784, Stop: 62515, Start Num: 14  
Candidate Starts for Dalilpop\_86:  
(6, 61664), (8, 61676), (Start: 14 @61784 has 3 MA's), (40, 62102), (48, 62183), (49, 62186), (53, 62231), (64, 62375), (69, 62498), (70, 62504),

Gene: Ennea\_89 Start: 61940, Stop: 62692, Start Num: 10  
Candidate Starts for Ennea\_89:  
(Start: 10 @61940 has 5 MA's), (Start: 14 @61994 has 3 MA's), (16, 62027), (17, 62060), (20, 62090), (35, 62243), (38, 62294), (44, 62345), (47, 62387),

Gene: Flapper\_86 Start: 61618, Stop: 62349, Start Num: 14  
Candidate Starts for Flapper\_86:  
(Start: 14 @61618 has 3 MA's), (35, 61867), (40, 61936), (48, 62017), (49, 62020), (52, 62062), (53, 62065), (64, 62209),

Gene: Float294\_83 Start: 61844, Stop: 62596, Start Num: 10  
Candidate Starts for Float294\_83:  
(Start: 10 @61844 has 5 MA's), (Start: 14 @61898 has 3 MA's), (16, 61931), (17, 61964), (20, 61994), (35, 62147), (38, 62198), (44, 62249), (47, 62291),

Gene: GRU1\_72 Start: 53237, Stop: 53968, Start Num: 14  
Candidate Starts for GRU1\_72:  
(Start: 14 @53237 has 3 MA's), (26, 53381), (30, 53423), (40, 53555), (48, 53636), (49, 53639), (52, 53681), (53, 53684), (64, 53828), (69, 53951), (70, 53957),

Gene: GTE5\_71 Start: 54128, Stop: 54859, Start Num: 14  
Candidate Starts for GTE5\_71:  
(Start: 14 @54128 has 3 MA's), (35, 54377), (40, 54446), (49, 54530), (52, 54572), (53, 54575), (64, 54719), (69, 54842), (70, 54848),

Gene: GuyFagieri\_86 Start: 61175, Stop: 61660, Start Num: 15  
Candidate Starts for GuyFagieri\_86:  
(Start: 15 @61175 has 6 MA's), (18, 61229), (23, 61280), (28, 61331), (30, 61349), (34, 61403), (37, 61463), (39, 61484), (43, 61517), (50, 61595),

Gene: HubbaBubba\_75 Start: 55694, Stop: 56443, Start Num: 11  
Candidate Starts for HubbaBubba\_75:  
(Start: 9 @55628 has 1 MA's), (Start: 11 @55694 has 13 MA's), (Start: 12 @55697 has 1 MA's), (17, 55796), (20, 55826), (33, 55961), (36, 56000), (42, 56057), (43, 56072), (45, 56081), (46, 56102), (47, 56117), (52, 56162), (62, 56267),

Gene: IDyn\_76 Start: 56063, Stop: 56818, Start Num: 11  
Candidate Starts for IDyn\_76:  
(Start: 9 @56006 has 1 MA's), (Start: 11 @56063 has 13 MA's), (Start: 12 @56066 has 1 MA's), (13, 56087), (17, 56165), (20, 56195), (33, 56330), (39, 56417), (42, 56432), (43, 56447), (45, 56456), (46, 56477), (47, 56492), (52, 56537), (62, 56642),

Gene: Kabluna\_85 Start: 60338, Stop: 61096, Start Num: 11  
Candidate Starts for Kabluna\_85:

(1, 60074), (2, 60110), (3, 60134), (Start: 11 @60338 has 13 MA's), (19, 60446), (22, 60494), (32, 60599), (40, 60710), (41, 60719), (47, 60782), (49, 60788), (52, 60827), (56, 60866), (58, 60884), (63, 60947), (66, 60971),

Gene: Lollipop1437\_84 Start: 61636, Stop: 62388, Start Num: 10

Candidate Starts for Lollipop1437\_84:

(Start: 10 @61636 has 5 MA's), (Start: 14 @61690 has 3 MA's), (20, 61786), (35, 61939), (38, 61990), (44, 62041), (61, 62212), (65, 62248),

Gene: Marietta\_80 Start: 56972, Stop: 57715, Start Num: 12

Candidate Starts for Marietta\_80:

(Start: 9 @56909 has 1 MA's), (Start: 11 @56969 has 13 MA's), (Start: 12 @56972 has 1 MA's), (17, 57071), (20, 57101), (33, 57236), (39, 57323), (42, 57338), (43, 57353), (45, 57362), (46, 57383), (52, 57443), (57, 57485), (60, 57506), (62, 57539), (63, 57545), (68, 57623),

Gene: Maselop\_88 Start: 61601, Stop: 62101, Start Num: 15

Candidate Starts for Maselop\_88:

(Start: 15 @61601 has 6 MA's), (24, 61718), (25, 61724), (30, 61790), (43, 61958), (51, 62048),

Gene: MerCougar\_83 Start: 61964, Stop: 62554, Start Num: 11

Candidate Starts for MerCougar\_83:

(Start: 11 @61964 has 13 MA's), (Start: 12 @61967 has 1 MA's), (19, 62072), (20, 62099), (22, 62120), (26, 62156), (29, 62186), (31, 62216), (40, 62336), (43, 62363), (47, 62411), (49, 62417), (52, 62456), (54, 62474), (55, 62483),

Gene: NadineRae\_80 Start: 56569, Stop: 57324, Start Num: 11

Candidate Starts for NadineRae\_80:

(Start: 9 @56503 has 1 MA's), (Start: 11 @56569 has 13 MA's), (Start: 12 @56572 has 1 MA's), (17, 56671), (20, 56701), (33, 56836), (39, 56923), (42, 56938), (43, 56953), (45, 56962), (46, 56983), (47, 56998), (52, 57043), (62, 57148), (68, 57232),

Gene: NosilaM\_81 Start: 60594, Stop: 61352, Start Num: 11

Candidate Starts for NosilaM\_81:

(Start: 11 @60594 has 13 MA's), (19, 60702), (22, 60750), (32, 60855), (40, 60966), (47, 61038), (49, 61044), (52, 61083), (56, 61122), (63, 61203), (66, 61227),

Gene: Outis\_81 Start: 61065, Stop: 61823, Start Num: 11

Candidate Starts for Outis\_81:

(7, 60990), (Start: 11 @61065 has 13 MA's), (Start: 12 @61068 has 1 MA's), (19, 61173), (22, 61221), (27, 61272), (29, 61287), (31, 61317), (40, 61437), (43, 61464), (47, 61509), (49, 61515), (52, 61554), (56, 61593), (63, 61674), (68, 61752),

Gene: Patio\_83 Start: 60834, Stop: 61592, Start Num: 10

Candidate Starts for Patio\_83:

(Start: 10 @60834 has 5 MA's), (Start: 14 @60888 has 3 MA's), (16, 60921), (17, 60954), (20, 60984), (38, 61188), (44, 61239), (54, 61350), (65, 61452), (71, 61584),

Gene: Polyzuki\_87 Start: 61611, Stop: 62111, Start Num: 15

Candidate Starts for Polyzuki\_87:

(Start: 15 @61611 has 6 MA's), (24, 61728), (25, 61734), (30, 61800), (43, 61968), (51, 62058),

Gene: Skysand\_86 Start: 61757, Stop: 62545, Start Num: 10

Candidate Starts for Skysand\_86:

(Start: 10 @61757 has 5 MA's), (Start: 14 @61811 has 3 MA's), (16, 61844), (17, 61877), (20, 61907), (35, 62060), (38, 62111), (44, 62162), (56, 62294),

Gene: StarStruck\_81 Start: 61065, Stop: 61823, Start Num: 11

Candidate Starts for StarStruck\_81:

(7, 60990), (Start: 11 @61065 has 13 MA's), (Start: 12 @61068 has 1 MA's), (19, 61173), (22, 61221), (27, 61272), (29, 61287), (31, 61317), (40, 61437), (43, 61464), (47, 61509), (49, 61515), (52, 61554), (56, 61593), (63, 61674), (68, 61752),

Gene: Sukkupi\_80 Start: 58610, Stop: 59365, Start Num: 11

Candidate Starts for Sukkupi\_80:

(4, 58526), (5, 58535), (Start: 11 @58610 has 13 MA's), (Start: 12 @58613 has 1 MA's), (13, 58634), (17, 58712), (20, 58742), (33, 58877), (39, 58964), (42, 58979), (43, 58994), (45, 59003), (46, 59024), (52, 59084), (62, 59189),

Gene: SuperSulley\_83 Start: 61523, Stop: 62281, Start Num: 11

Candidate Starts for SuperSulley\_83:

(1, 61259), (2, 61295), (3, 61319), (Start: 11 @61523 has 13 MA's), (17, 61625), (19, 61631), (22, 61679), (32, 61784), (40, 61895), (47, 61967), (49, 61973), (52, 62012), (56, 62051), (60, 62084), (63, 62132), (67, 62201), (68, 62210),

Gene: Turuncu\_86 Start: 61237, Stop: 61968, Start Num: 14

Candidate Starts for Turuncu\_86:

(Start: 14 @61237 has 3 MA's), (40, 61555), (48, 61636), (49, 61639), (53, 61684), (64, 61828), (69, 61951), (70, 61957),

Gene: WhoseManz\_80 Start: 56569, Stop: 57375, Start Num: 9

Candidate Starts for WhoseManz\_80:

(Start: 9 @56569 has 1 MA's), (Start: 11 @56629 has 13 MA's), (Start: 12 @56632 has 1 MA's), (17, 56731), (20, 56761), (33, 56896), (39, 56983), (42, 56998), (43, 57013), (45, 57022), (46, 57043), (52, 57103), (57, 57145), (60, 57166), (62, 57199), (63, 57205), (68, 57283),

Gene: Yndexa\_80 Start: 58610, Stop: 59365, Start Num: 11

Candidate Starts for Yndexa\_80:

(4, 58526), (5, 58535), (Start: 11 @58610 has 13 MA's), (Start: 12 @58613 has 1 MA's), (13, 58634), (17, 58712), (20, 58742), (33, 58877), (39, 58964), (42, 58979), (43, 58994), (45, 59003), (46, 59024), (52, 59084), (62, 59189),