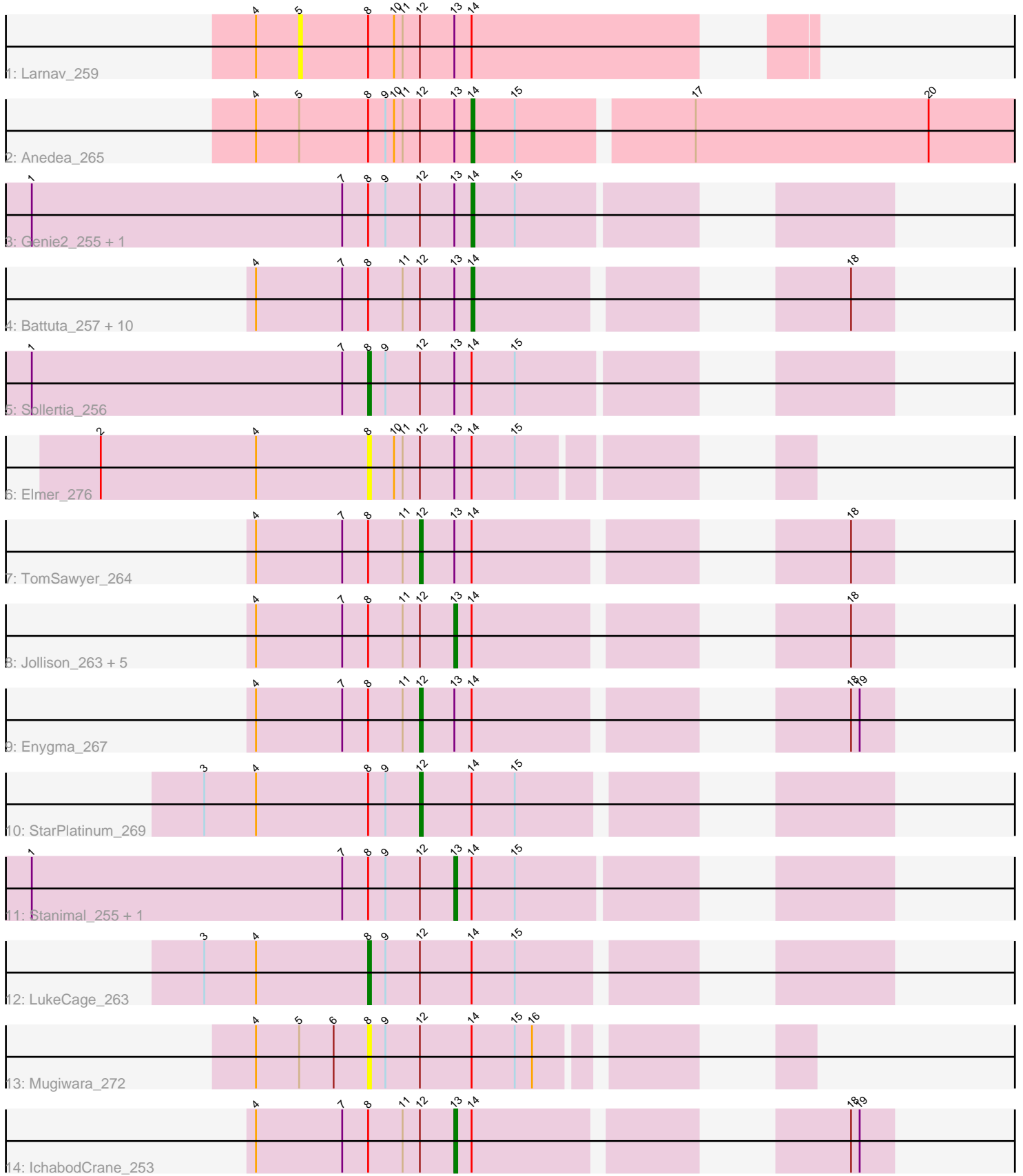


Pham 171672



Note: Tracks are now grouped by subcluster and scaled. Switching in subcluster is indicated by changes in track color. Track scale is now set by default to display the region 30 bp upstream of start 1 to 30 bp downstream of the last possible start. If this default region is judged to be packed too tightly with annotated starts, the track will be further scaled to only show that region of the ORF with annotated starts. This action will be indicated by adding "Zoomed" to the title. For starts, yellow indicates the location of called starts comprised solely of Glimmer/GeneMark auto-annotations, green indicates the location of called starts with at least 1 manual gene annotation.

Pham 171672 Report

This analysis was run 07/10/24 on database version 566.

Pham number 171672 has 31 members, 7 are drafts.

Phages represented in each track:

- Track 1 : Larnav_259
- Track 2 : Anedea_265
- Track 3 : Genie2_255, Yaboi_261
- Track 4 : Battuta_257, SaltySpitoon_259, CeilingFan_273, Birchlyn_259, PumpkinSpice_262, Bordeaux_257, KentuckyRacer_272, Quaran19_260, Spilled_267, Wipeout_251, Spelly_264
- Track 5 : Sollertia_256
- Track 6 : Elmer_276
- Track 7 : TomSawyer_264
- Track 8 : Jollison_263, Amabiko_264, MindFlayer_252, Gibbi_269, JimJam_267, Starbow_256
- Track 9 : Enygma_267
- Track 10 : StarPlatinum_269
- Track 11 : Stanimal_255, BoomerJR_255
- Track 12 : LukeCage_263
- Track 13 : Mugiwara_272
- Track 14 : IchabodCrane_253

Summary of Final Annotations (See graph section above for start numbers):

The start number called the most often in the published annotations is 14, it was called in 12 of the 24 non-draft genes in the pham.

Genes that call this "Most Annotated" start:

- Anedea_265, Battuta_257, Birchlyn_259, Bordeaux_257, CeilingFan_273, Genie2_255, KentuckyRacer_272, PumpkinSpice_262, Quaran19_260, SaltySpitoon_259, Spelly_264, Spilled_267, Wipeout_251, Yaboi_261,

Genes that have the "Most Annotated" start but do not call it:

- Amabiko_264, BoomerJR_255, Elmer_276, Enygma_267, Gibbi_269, IchabodCrane_253, JimJam_267, Jollison_263, Larnav_259, LukeCage_263, MindFlayer_252, Mugiwara_272, Sollertia_256, Stanimal_255, StarPlatinum_269, Starbow_256, TomSawyer_264,

Genes that do not have the "Most Annotated" start:

-

Summary by start number:

Start 5:

- Found in 3 of 31 (9.7%) of genes in pham
- No Manual Annotations of this start.
- Called 33.3% of time when present
- Phage (with cluster) where this start called: Larnav_259 (BE1),

Start 8:

- Found in 31 of 31 (100.0%) of genes in pham
- Manual Annotations of this start: 2 of 24
- Called 12.9% of time when present
- Phage (with cluster) where this start called: Elmer_276 (BE2), LukeCage_263 (BE2), Mugiwara_272 (BE2), Sollertia_256 (BE2),

Start 12:

- Found in 31 of 31 (100.0%) of genes in pham
- Manual Annotations of this start: 3 of 24
- Called 9.7% of time when present
- Phage (with cluster) where this start called: Enygma_267 (BE2), StarPlatinum_269 (BE2), TomSawyer_264 (BE2),

Start 13:

- Found in 28 of 31 (90.3%) of genes in pham
- Manual Annotations of this start: 7 of 24
- Called 32.1% of time when present
- Phage (with cluster) where this start called: Amabiko_264 (BE2), BoomerJR_255 (BE2), Gibbi_269 (BE2), IchabodCrane_253 (BE2), JimJam_267 (BE2), Jollison_263 (BE2), MindFlyer_252 (BE2), Stanimal_255 (BE2), Starbow_256 (BE2),

Start 14:

- Found in 31 of 31 (100.0%) of genes in pham
- Manual Annotations of this start: 12 of 24
- Called 45.2% of time when present
- Phage (with cluster) where this start called: Anedea_265 (BE1), Battuta_257 (BE2), Birchlyn_259 (BE2), Bordeaux_257 (BE2), CeilingFan_273 (BE2), Genie2_255 (BE2), KentuckyRacer_272 (BE2), PumpkinSpice_262 (BE2), Quaran19_260 (BE2), SaltySpittoon_259 (BE2), Spelly_264 (BE2), Spilled_267 (BE2), Wipeout_251 (BE2), Yaboi_261 (BE2),

Summary by clusters:

There are 2 clusters represented in this pham: BE2, BE1,

Info for manual annotations of cluster BE1:

- Start number 14 was manually annotated 1 time for cluster BE1.

Info for manual annotations of cluster BE2:

- Start number 8 was manually annotated 2 times for cluster BE2.
- Start number 12 was manually annotated 3 times for cluster BE2.

- Start number 13 was manually annotated 7 times for cluster BE2.
- Start number 14 was manually annotated 11 times for cluster BE2.

Gene Information:

Gene: Amabiko_264 Start: 118326, Stop: 118445, Start Num: 13

Candidate Starts for Amabiko_264:

(4, 118257), (7, 118287), (Start: 8 @118296 has 2 MA's), (11, 118308), (Start: 12 @118314 has 3 MA's), (Start: 13 @118326 has 7 MA's), (Start: 14 @118332 has 12 MA's), (18, 118431),

Gene: Anedea_265 Start: 122550, Stop: 122744, Start Num: 14

Candidate Starts for Anedea_265:

(4, 122475), (5, 122490), (Start: 8 @122514 has 2 MA's), (9, 122520), (10, 122523), (11, 122526), (Start: 12 @122532 has 3 MA's), (Start: 13 @122544 has 7 MA's), (Start: 14 @122550 has 12 MA's), (15, 122565), (17, 122622), (20, 122703),

Gene: Battuta_257 Start: 117647, Stop: 117760, Start Num: 14

Candidate Starts for Battuta_257:

(4, 117572), (7, 117602), (Start: 8 @117611 has 2 MA's), (11, 117623), (Start: 12 @117629 has 3 MA's), (Start: 13 @117641 has 7 MA's), (Start: 14 @117647 has 12 MA's), (18, 117746),

Gene: Birchlyn_259 Start: 115580, Stop: 115693, Start Num: 14

Candidate Starts for Birchlyn_259:

(4, 115505), (7, 115535), (Start: 8 @115544 has 2 MA's), (11, 115556), (Start: 12 @115562 has 3 MA's), (Start: 13 @115574 has 7 MA's), (Start: 14 @115580 has 12 MA's), (18, 115679),

Gene: BoomerJR_255 Start: 118246, Stop: 118368, Start Num: 13

Candidate Starts for BoomerJR_255:

(1, 118099), (7, 118207), (Start: 8 @118216 has 2 MA's), (9, 118222), (Start: 12 @118234 has 3 MA's), (Start: 13 @118246 has 7 MA's), (Start: 14 @118252 has 12 MA's), (15, 118267),

Gene: Bordeaux_257 Start: 118230, Stop: 118343, Start Num: 14

Candidate Starts for Bordeaux_257:

(4, 118155), (7, 118185), (Start: 8 @118194 has 2 MA's), (11, 118206), (Start: 12 @118212 has 3 MA's), (Start: 13 @118224 has 7 MA's), (Start: 14 @118230 has 12 MA's), (18, 118329),

Gene: CeilingFan_273 Start: 119485, Stop: 119598, Start Num: 14

Candidate Starts for CeilingFan_273:

(4, 119410), (7, 119440), (Start: 8 @119449 has 2 MA's), (11, 119461), (Start: 12 @119467 has 3 MA's), (Start: 13 @119479 has 7 MA's), (Start: 14 @119485 has 12 MA's), (18, 119584),

Gene: Elmer_276 Start: 121832, Stop: 121954, Start Num: 8

Candidate Starts for Elmer_276:

(2, 121739), (4, 121793), (Start: 8 @121832 has 2 MA's), (10, 121841), (11, 121844), (Start: 12 @121850 has 3 MA's), (Start: 13 @121862 has 7 MA's), (Start: 14 @121868 has 12 MA's), (15, 121883),

Gene: Enygma_267 Start: 121264, Stop: 121395, Start Num: 12

Candidate Starts for Enygma_267:

(4, 121207), (7, 121237), (Start: 8 @121246 has 2 MA's), (11, 121258), (Start: 12 @121264 has 3 MA's), (Start: 13 @121276 has 7 MA's), (Start: 14 @121282 has 12 MA's), (18, 121381), (19, 121384),

Gene: Genie2_255 Start: 118377, Stop: 118493, Start Num: 14

Candidate Starts for Genie2_255:

(1, 118224), (7, 118332), (Start: 8 @118341 has 2 MA's), (9, 118347), (Start: 12 @118359 has 3 MA's), (Start: 13 @118371 has 7 MA's), (Start: 14 @118377 has 12 MA's), (15, 118392),

Gene: Gibbi_269 Start: 118972, Stop: 119091, Start Num: 13

Candidate Starts for Gibbi_269:

(4, 118903), (7, 118933), (Start: 8 @118942 has 2 MA's), (11, 118954), (Start: 12 @118960 has 3 MA's), (Start: 13 @118972 has 7 MA's), (Start: 14 @118978 has 12 MA's), (18, 119077),

Gene: IchabodCrane_253 Start: 118027, Stop: 118146, Start Num: 13

Candidate Starts for IchabodCrane_253:

(4, 117958), (7, 117988), (Start: 8 @117997 has 2 MA's), (11, 118009), (Start: 12 @118015 has 3 MA's), (Start: 13 @118027 has 7 MA's), (Start: 14 @118033 has 12 MA's), (18, 118132), (19, 118135),

Gene: JimJam_267 Start: 120408, Stop: 120527, Start Num: 13

Candidate Starts for JimJam_267:

(4, 120339), (7, 120369), (Start: 8 @120378 has 2 MA's), (11, 120390), (Start: 12 @120396 has 3 MA's), (Start: 13 @120408 has 7 MA's), (Start: 14 @120414 has 12 MA's), (18, 120513),

Gene: Jollison_263 Start: 118158, Stop: 118277, Start Num: 13

Candidate Starts for Jollison_263:

(4, 118089), (7, 118119), (Start: 8 @118128 has 2 MA's), (11, 118140), (Start: 12 @118146 has 3 MA's), (Start: 13 @118158 has 7 MA's), (Start: 14 @118164 has 12 MA's), (18, 118263),

Gene: KentuckyRacer_272 Start: 120329, Stop: 120442, Start Num: 14

Candidate Starts for KentuckyRacer_272:

(4, 120254), (7, 120284), (Start: 8 @120293 has 2 MA's), (11, 120305), (Start: 12 @120311 has 3 MA's), (Start: 13 @120323 has 7 MA's), (Start: 14 @120329 has 12 MA's), (18, 120428),

Gene: Larnav_259 Start: 121417, Stop: 121572, Start Num: 5

Candidate Starts for Larnav_259:

(4, 121402), (5, 121417), (Start: 8 @121441 has 2 MA's), (10, 121450), (11, 121453), (Start: 12 @121459 has 3 MA's), (Start: 13 @121471 has 7 MA's), (Start: 14 @121477 has 12 MA's),

Gene: LukeCage_263 Start: 120379, Stop: 120528, Start Num: 8

Candidate Starts for LukeCage_263:

(3, 120322), (4, 120340), (Start: 8 @120379 has 2 MA's), (9, 120385), (Start: 12 @120397 has 3 MA's), (Start: 14 @120415 has 12 MA's), (15, 120430),

Gene: MindFlayer_252 Start: 117543, Stop: 117662, Start Num: 13

Candidate Starts for MindFlayer_252:

(4, 117474), (7, 117504), (Start: 8 @117513 has 2 MA's), (11, 117525), (Start: 12 @117531 has 3 MA's), (Start: 13 @117543 has 7 MA's), (Start: 14 @117549 has 12 MA's), (18, 117648),

Gene: Mugiwara_272 Start: 120861, Stop: 120980, Start Num: 8

Candidate Starts for Mugiwara_272:

(4, 120822), (5, 120837), (6, 120849), (Start: 8 @120861 has 2 MA's), (9, 120867), (Start: 12 @120879 has 3 MA's), (Start: 14 @120897 has 12 MA's), (15, 120912), (16, 120918),

Gene: PumpkinSpice_262 Start: 118770, Stop: 118883, Start Num: 14

Candidate Starts for PumpkinSpice_262:

(4, 118695), (7, 118725), (Start: 8 @118734 has 2 MA's), (11, 118746), (Start: 12 @118752 has 3 MA's), (Start: 13 @118764 has 7 MA's), (Start: 14 @118770 has 12 MA's), (18, 118869),

Gene: Quaran19_260 Start: 118671, Stop: 118784, Start Num: 14

Candidate Starts for Quaran19_260:

(4, 118596), (7, 118626), (Start: 8 @118635 has 2 MA's), (11, 118647), (Start: 12 @118653 has 3 MA's), (Start: 13 @118665 has 7 MA's), (Start: 14 @118671 has 12 MA's), (18, 118770),

Gene: SaltySpittoon_259 Start: 117753, Stop: 117866, Start Num: 14

Candidate Starts for SaltySpittoon_259:

(4, 117678), (7, 117708), (Start: 8 @117717 has 2 MA's), (11, 117729), (Start: 12 @117735 has 3 MA's), (Start: 13 @117747 has 7 MA's), (Start: 14 @117753 has 12 MA's), (18, 117852),

Gene: Sollertia_256 Start: 118330, Stop: 118482, Start Num: 8

Candidate Starts for Sollertia_256:

(1, 118213), (7, 118321), (Start: 8 @118330 has 2 MA's), (9, 118336), (Start: 12 @118348 has 3 MA's), (Start: 13 @118360 has 7 MA's), (Start: 14 @118366 has 12 MA's), (15, 118381),

Gene: Spelly_264 Start: 117682, Stop: 117795, Start Num: 14

Candidate Starts for Spelly_264:

(4, 117607), (7, 117637), (Start: 8 @117646 has 2 MA's), (11, 117658), (Start: 12 @117664 has 3 MA's), (Start: 13 @117676 has 7 MA's), (Start: 14 @117682 has 12 MA's), (18, 117781),

Gene: Spilled_267 Start: 119346, Stop: 119459, Start Num: 14

Candidate Starts for Spilled_267:

(4, 119271), (7, 119301), (Start: 8 @119310 has 2 MA's), (11, 119322), (Start: 12 @119328 has 3 MA's), (Start: 13 @119340 has 7 MA's), (Start: 14 @119346 has 12 MA's), (18, 119445),

Gene: Stanimal_255 Start: 118732, Stop: 118854, Start Num: 13

Candidate Starts for Stanimal_255:

(1, 118585), (7, 118693), (Start: 8 @118702 has 2 MA's), (9, 118708), (Start: 12 @118720 has 3 MA's), (Start: 13 @118732 has 7 MA's), (Start: 14 @118738 has 12 MA's), (15, 118753),

Gene: StarPlatinum_269 Start: 121173, Stop: 121304, Start Num: 12

Candidate Starts for StarPlatinum_269:

(3, 121098), (4, 121116), (Start: 8 @121155 has 2 MA's), (9, 121161), (Start: 12 @121173 has 3 MA's), (Start: 14 @121191 has 12 MA's), (15, 121206),

Gene: Starbow_256 Start: 117720, Stop: 117839, Start Num: 13

Candidate Starts for Starbow_256:

(4, 117651), (7, 117681), (Start: 8 @117690 has 2 MA's), (11, 117702), (Start: 12 @117708 has 3 MA's), (Start: 13 @117720 has 7 MA's), (Start: 14 @117726 has 12 MA's), (18, 117825),

Gene: TomSawyer_264 Start: 120639, Stop: 120770, Start Num: 12

Candidate Starts for TomSawyer_264:

(4, 120582), (7, 120612), (Start: 8 @120621 has 2 MA's), (11, 120633), (Start: 12 @120639 has 3 MA's), (Start: 13 @120651 has 7 MA's), (Start: 14 @120657 has 12 MA's), (18, 120756),

Gene: Wipeout_251 Start: 119609, Stop: 119722, Start Num: 14

Candidate Starts for Wipeout_251:

(4, 119534), (7, 119564), (Start: 8 @119573 has 2 MA's), (11, 119585), (Start: 12 @119591 has 3 MA's), (Start: 13 @119603 has 7 MA's), (Start: 14 @119609 has 12 MA's), (18, 119708),

Gene: Yaboi_261 Start: 118301, Stop: 118417, Start Num: 14

Candidate Starts for Yaboi_261:

(1, 118148), (7, 118256), (Start: 8 @118265 has 2 MA's), (9, 118271), (Start: 12 @118283 has 3 MA's), (Start: 13 @118295 has 7 MA's), (Start: 14 @118301 has 12 MA's), (15, 118316),