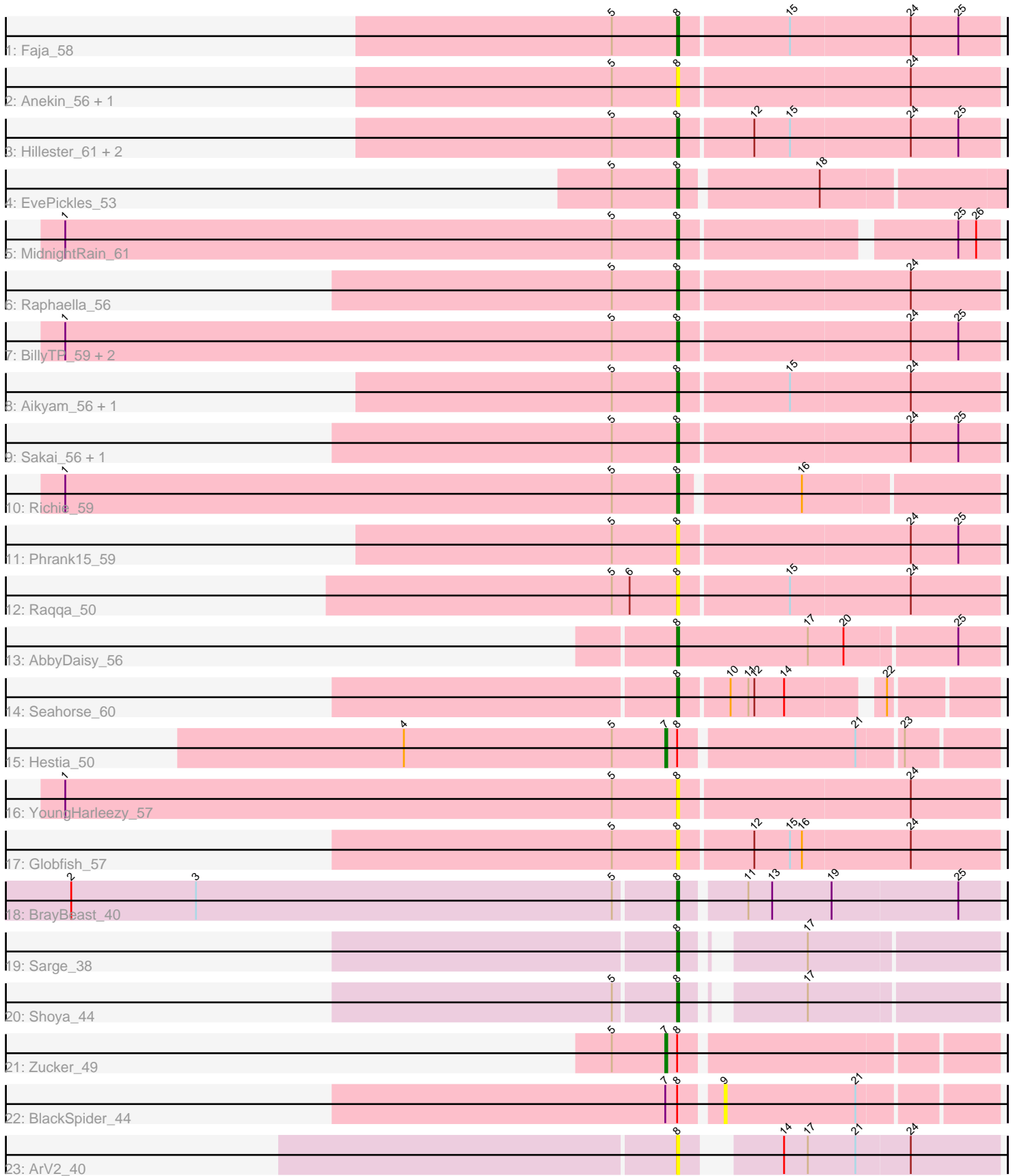


Pham 171675



Note: Tracks are now grouped by subcluster and scaled. Switching in subcluster is indicated by changes in track color. Track scale is now set by default to display the region 30 bp upstream of start 1 to 30 bp downstream of the last possible start. If this default region is judged to be packed too tightly with annotated starts, the track will be further scaled to only show that region of the ORF with annotated starts. This action will be indicated by adding "Zoomed" to the title. For starts, yellow indicates the location of called starts comprised solely of Glimmer/GeneMark auto-annotations, green indicates the location of called starts with at least 1 manual gene annotation.

## Pham 171675 Report

This analysis was run 07/10/24 on database version 566.

Pham number 171675 has 30 members, 13 are drafts.

Phages represented in each track:

- Track 1 : Faja\_58
- Track 2 : Anekin\_56, BenchScraper\_56
- Track 3 : Hillester\_61, RadFad\_61, Tiff81\_57
- Track 4 : EvePickles\_53
- Track 5 : MidnightRain\_61
- Track 6 : Raphaella\_56
- Track 7 : BillyTP\_59, CookieBear\_57, Isolde\_56
- Track 8 : Aikyam\_56, Auxilium\_53
- Track 9 : Sakai\_56, Gorpy\_57
- Track 10 : Richie\_59
- Track 11 : Phrank15\_59
- Track 12 : Raqqa\_50
- Track 13 : AbbyDaisy\_56
- Track 14 : Seahorse\_60
- Track 15 : Hestia\_50
- Track 16 : YoungHarleezy\_57
- Track 17 : Globfish\_57
- Track 18 : BrayBeast\_40
- Track 19 : Sarge\_38
- Track 20 : Shoya\_44
- Track 21 : Zucker\_49
- Track 22 : BlackSpider\_44
- Track 23 : ArV2\_40

### ***Summary of Final Annotations (See graph section above for start numbers):***

The start number called the most often in the published annotations is 8, it was called in 15 of the 17 non-draft genes in the pham.

Genes that call this "Most Annotated" start:

• AbbyDaisy\_56, Aikyam\_56, Anekin\_56, ArV2\_40, Auxilium\_53, BenchScraper\_56, BillyTP\_59, BrayBeast\_40, CookieBear\_57, EvePickles\_53, Faja\_58, Globfish\_57, Gorpy\_57, Hillester\_61, Isolde\_56, MidnightRain\_61, Phrank15\_59, RadFad\_61, Raphaella\_56, Raqqa\_50, Richie\_59, Sakai\_56, Sarge\_38, Seahorse\_60, Shoya\_44,

Tiff81\_57, YoungHarleezy\_57,

Genes that have the "Most Annotated" start but do not call it:

- BlackSpider\_44, Hestia\_50, Zucker\_49,

Genes that do not have the "Most Annotated" start:

- 

### Summary by start number:

Start 7:

- Found in 3 of 30 ( 10.0% ) of genes in pham
- Manual Annotations of this start: 2 of 17
- Called 66.7% of time when present
- Phage (with cluster) where this start called: Hestia\_50 (AY), Zucker\_49 (FN),

Start 8:

- Found in 30 of 30 ( 100.0% ) of genes in pham
- Manual Annotations of this start: 15 of 17
- Called 90.0% of time when present
- Phage (with cluster) where this start called: AbbyDaisy\_56 (AY), Aikyam\_56 (AY), Anekin\_56 (AY), ArV2\_40 (singleton), Auxilium\_53 (AY), BenchScraper\_56 (AY), BillyTP\_59 (AY), BrayBeast\_40 (FB), CookieBear\_57 (AY), EvePickles\_53 (AY), Faja\_58 (AY), Globfish\_57 (AY), Gorpy\_57 (AY), Hillester\_61 (AY), Isolde\_56 (AY), MidnightRain\_61 (AY), Phrank15\_59 (AY), RadFad\_61 (AY), Raphaella\_56 (AY), Raqqa\_50 (AY), Richie\_59 (AY), Sakai\_56 (AY), Sarge\_38 (FB), Seahorse\_60 (AY), Shoya\_44 (FB), Tiff81\_57 (AY), YoungHarleezy\_57 (AY),

Start 9:

- Found in 1 of 30 ( 3.3% ) of genes in pham
- No Manual Annotations of this start.
- Called 100.0% of time when present
- Phage (with cluster) where this start called: BlackSpider\_44 (FN),

### Summary by clusters:

There are 4 clusters represented in this pham: AY, FB, singleton, FN,

Info for manual annotations of cluster AY:

- Start number 7 was manually annotated 1 time for cluster AY.
- Start number 8 was manually annotated 12 times for cluster AY.

Info for manual annotations of cluster FB:

- Start number 8 was manually annotated 3 times for cluster FB.

Info for manual annotations of cluster FN:

- Start number 7 was manually annotated 1 time for cluster FN.

### Gene Information:

Gene: AbbyDaisy\_56 Start: 33760, Stop: 33918, Start Num: 8

Candidate Starts for AbbyDaisy\_56:  
(Start: 8 @33760 has 15 MA's), (17, 33826), (20, 33844), (25, 33898),

Gene: Aikyam\_56 Start: 31872, Stop: 32030, Start Num: 8  
Candidate Starts for Aikyam\_56:  
(5, 31839), (Start: 8 @31872 has 15 MA's), (15, 31926), (24, 31986),

Gene: Anekin\_56 Start: 33544, Stop: 33702, Start Num: 8  
Candidate Starts for Anekin\_56:  
(5, 33511), (Start: 8 @33544 has 15 MA's), (24, 33658),

Gene: ArV2\_40 Start: 25889, Stop: 26032, Start Num: 8  
Candidate Starts for ArV2\_40:  
(Start: 8 @25889 has 15 MA's), (14, 25925), (17, 25937), (21, 25961), (24, 25988),

Gene: Auxilium\_53 Start: 31029, Stop: 31187, Start Num: 8  
Candidate Starts for Auxilium\_53:  
(5, 30996), (Start: 8 @31029 has 15 MA's), (15, 31083), (24, 31143),

Gene: BenchScraper\_56 Start: 33194, Stop: 33352, Start Num: 8  
Candidate Starts for BenchScraper\_56:  
(5, 33161), (Start: 8 @33194 has 15 MA's), (24, 33308),

Gene: BillyTP\_59 Start: 35066, Stop: 35224, Start Num: 8  
Candidate Starts for BillyTP\_59:  
(1, 34757), (5, 35033), (Start: 8 @35066 has 15 MA's), (24, 35180), (25, 35204),

Gene: BlackSpider\_44 Start: 30207, Stop: 30338, Start Num: 9  
Candidate Starts for BlackSpider\_44:  
(Start: 7 @30183 has 2 MA's), (Start: 8 @30189 has 15 MA's), (9, 30207), (21, 30273),

Gene: BrayBeast\_40 Start: 27217, Stop: 27372, Start Num: 8  
Candidate Starts for BrayBeast\_40:  
(2, 26914), (3, 26977), (5, 27187), (Start: 8 @27217 has 15 MA's), (11, 27247), (13, 27259), (19, 27289), (25, 27352),

Gene: CookieBear\_57 Start: 33450, Stop: 33608, Start Num: 8  
Candidate Starts for CookieBear\_57:  
(1, 33141), (5, 33417), (Start: 8 @33450 has 15 MA's), (24, 33564), (25, 33588),

Gene: EvePickles\_53 Start: 33650, Stop: 33805, Start Num: 8  
Candidate Starts for EvePickles\_53:  
(5, 33617), (Start: 8 @33650 has 15 MA's), (18, 33716),

Gene: Faja\_58 Start: 35034, Stop: 35192, Start Num: 8  
Candidate Starts for Faja\_58:  
(5, 35001), (Start: 8 @35034 has 15 MA's), (15, 35088), (24, 35148), (25, 35172),

Gene: Globfish\_57 Start: 33549, Stop: 33707, Start Num: 8  
Candidate Starts for Globfish\_57:  
(5, 33516), (Start: 8 @33549 has 15 MA's), (12, 33585), (15, 33603), (16, 33609), (24, 33663),

Gene: Gorpy\_57 Start: 34442, Stop: 34600, Start Num: 8

Candidate Starts for Gorpy\_57:

(5, 34409), (Start: 8 @34442 has 15 MA's), (24, 34556), (25, 34580),

Gene: Hestia\_50 Start: 31086, Stop: 31241, Start Num: 7

Candidate Starts for Hestia\_50:

(4, 30954), (5, 31059), (Start: 7 @31086 has 2 MA's), (Start: 8 @31092 has 15 MA's), (21, 31176), (23, 31197),

Gene: Hillester\_61 Start: 34795, Stop: 34953, Start Num: 8

Candidate Starts for Hillester\_61:

(5, 34762), (Start: 8 @34795 has 15 MA's), (12, 34831), (15, 34849), (24, 34909), (25, 34933),

Gene: Isolde\_56 Start: 33119, Stop: 33277, Start Num: 8

Candidate Starts for Isolde\_56:

(1, 32810), (5, 33086), (Start: 8 @33119 has 15 MA's), (24, 33233), (25, 33257),

Gene: MidnightRain\_61 Start: 34972, Stop: 35121, Start Num: 8

Candidate Starts for MidnightRain\_61:

(1, 34663), (5, 34939), (Start: 8 @34972 has 15 MA's), (25, 35101), (26, 35110),

Gene: Phrank15\_59 Start: 33748, Stop: 33906, Start Num: 8

Candidate Starts for Phrank15\_59:

(5, 33715), (Start: 8 @33748 has 15 MA's), (24, 33862), (25, 33886),

Gene: RadFad\_61 Start: 34795, Stop: 34953, Start Num: 8

Candidate Starts for RadFad\_61:

(5, 34762), (Start: 8 @34795 has 15 MA's), (12, 34831), (15, 34849), (24, 34909), (25, 34933),

Gene: Raphaella\_56 Start: 33054, Stop: 33212, Start Num: 8

Candidate Starts for Raphaella\_56:

(5, 33021), (Start: 8 @33054 has 15 MA's), (24, 33168),

Gene: Raqqa\_50 Start: 31059, Stop: 31217, Start Num: 8

Candidate Starts for Raqqa\_50:

(5, 31026), (6, 31035), (Start: 8 @31059 has 15 MA's), (15, 31113), (24, 31173),

Gene: Richie\_59 Start: 34120, Stop: 34272, Start Num: 8

Candidate Starts for Richie\_59:

(1, 33811), (5, 34087), (Start: 8 @34120 has 15 MA's), (16, 34177),

Gene: Sakai\_56 Start: 33153, Stop: 33311, Start Num: 8

Candidate Starts for Sakai\_56:

(5, 33120), (Start: 8 @33153 has 15 MA's), (24, 33267), (25, 33291),

Gene: Sarge\_38 Start: 25563, Stop: 25703, Start Num: 8

Candidate Starts for Sarge\_38:

(Start: 8 @25563 has 15 MA's), (17, 25611),

Gene: Seahorse\_60 Start: 35386, Stop: 35529, Start Num: 8

Candidate Starts for Seahorse\_60:

(Start: 8 @35386 has 15 MA's), (10, 35410), (11, 35419), (12, 35422), (14, 35437), (22, 35479),

Gene: Shoya\_44 Start: 27531, Stop: 27671, Start Num: 8

Candidate Starts for Shoya\_44:

(5, 27501), (Start: 8 @27531 has 15 MA's), (17, 27579),

Gene: Tiff81\_57 Start: 31564, Stop: 31722, Start Num: 8

Candidate Starts for Tiff81\_57:

(5, 31531), (Start: 8 @31564 has 15 MA's), (12, 31600), (15, 31618), (24, 31678), (25, 31702),

Gene: YoungHarleezy\_57 Start: 33617, Stop: 33775, Start Num: 8

Candidate Starts for YoungHarleezy\_57:

(1, 33308), (5, 33584), (Start: 8 @33617 has 15 MA's), (24, 33731),

Gene: Zucker\_49 Start: 32109, Stop: 32264, Start Num: 7

Candidate Starts for Zucker\_49:

(5, 32082), (Start: 7 @32109 has 2 MA's), (Start: 8 @32115 has 15 MA's),