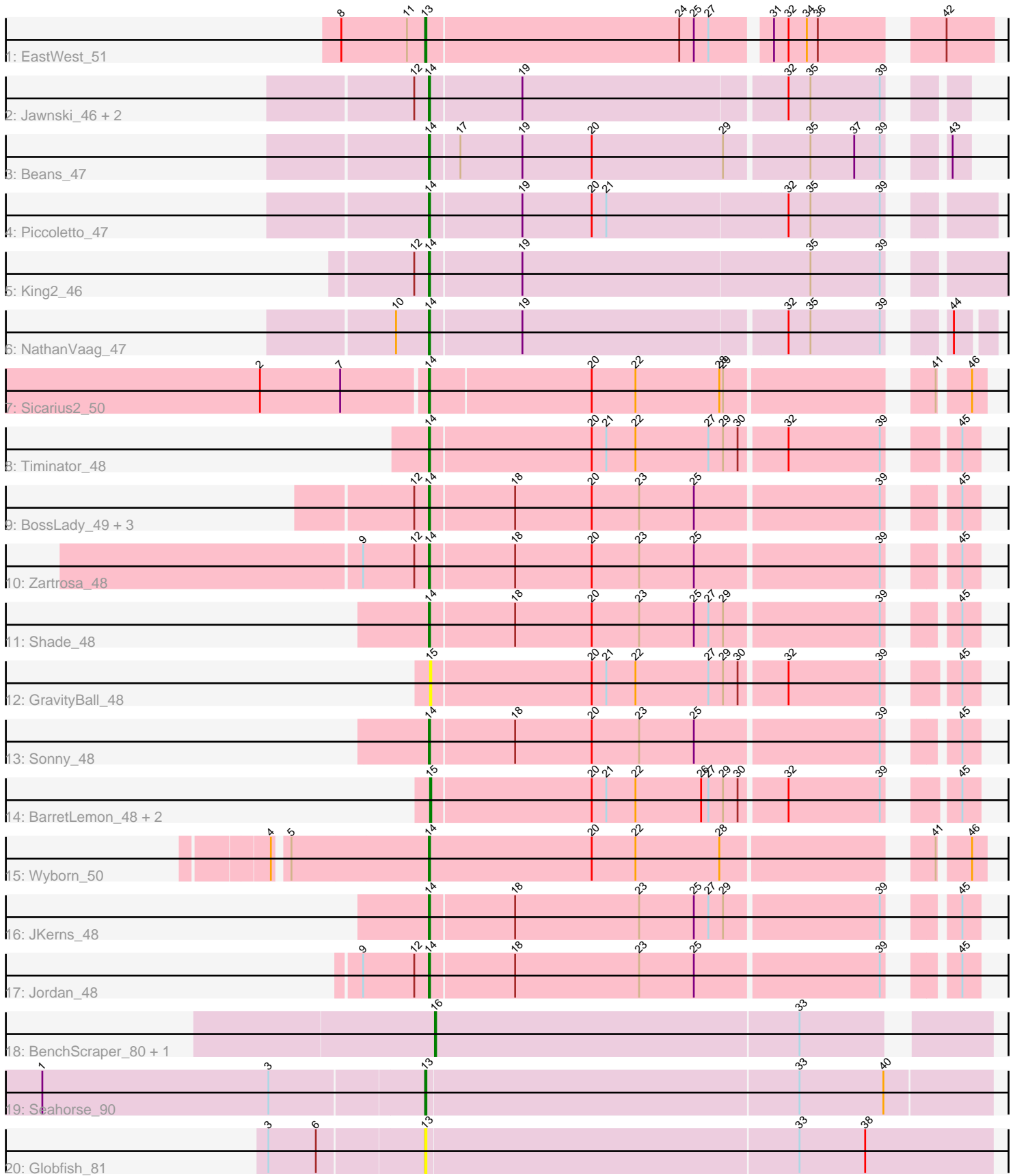


Pham 171699



Note: Tracks are now grouped by subcluster and scaled. Switching in subcluster is indicated by changes in track color. Track scale is now set by default to display the region 30 bp upstream of start 1 to 30 bp downstream of the last possible start. If this default region is judged to be packed too tightly with annotated starts, the track will be further scaled to only show that region of the ORF with annotated starts. This action will be indicated by adding "Zoomed" to the title. For starts, yellow indicates the location of called starts comprised solely of Glimmer/GeneMark auto-annotations, green indicates the location of called starts with at least 1 manual gene annotation.

Pham 171699 Report

This analysis was run 07/10/24 on database version 566.

Pham number 171699 has 28 members, 3 are drafts.

Phages represented in each track:

- Track 1 : EastWest_51
- Track 2 : Jawnski_46, Franzy_47, Brent_47
- Track 3 : Beans_47
- Track 4 : Piccoletto_47
- Track 5 : King2_46
- Track 6 : NathanVaag_47
- Track 7 : Sicarius2_50
- Track 8 : Timinator_48
- Track 9 : BossLady_49, Martha_48, TaeYoung_49, Grekaycon_48
- Track 10 : Zartrosa_48
- Track 11 : Shade_48
- Track 12 : GravityBall_48
- Track 13 : Sonny_48
- Track 14 : BarretLemon_48, LeeroyJ_48, StevieBAY_48
- Track 15 : Wyborn_50
- Track 16 : JKerns_48
- Track 17 : Jordan_48
- Track 18 : BenchScraper_80, Richie_86
- Track 19 : Seahorse_90
- Track 20 : Globfish_81

Summary of Final Annotations (See graph section above for start numbers):

The start number called the most often in the published annotations is 14, it was called in 19 of the 25 non-draft genes in the pham.

Genes that call this "Most Annotated" start:

- Beans_47, BossLady_49, Brent_47, Franzy_47, Grekaycon_48, JKerns_48, Jawnski_46, Jordan_48, King2_46, Martha_48, NathanVaag_47, Piccoletto_47, Shade_48, Sicarius2_50, Sonny_48, TaeYoung_49, Timinator_48, Wyborn_50, Zartrosa_48,

Genes that have the "Most Annotated" start but do not call it:

-

Genes that do not have the "Most Annotated" start:

- BarretLemon_48, BenchScraper_80, EastWest_51, Globfish_81, GravityBall_48, LeeroyJ_48, Richie_86, Seahorse_90, StevieBAY_48,

Summary by start number:

Start 13:

- Found in 3 of 28 (10.7%) of genes in pham
- Manual Annotations of this start: 2 of 25
- Called 100.0% of time when present
- Phage (with cluster) where this start called: EastWest_51 (AO), Globfish_81 (AY), Seahorse_90 (AY),

Start 14:

- Found in 19 of 28 (67.9%) of genes in pham
- Manual Annotations of this start: 19 of 25
- Called 100.0% of time when present
- Phage (with cluster) where this start called: Beans_47 (AO1), BossLady_49 (AO2), Brent_47 (AO1), Franzy_47 (AO1), Grekaycon_48 (AO2), JKerns_48 (AO2), Jawnski_46 (AO1), Jordan_48 (AO2), King2_46 (AO1), Martha_48 (AO2), NathanVaag_47 (AO1), Piccoletto_47 (AO1), Shade_48 (AO2), Sicarius2_50 (AO2), Sonny_48 (AO2), TaeYoung_49 (AO2), Timinator_48 (AO2), Wyborn_50 (AO2), Zartrosa_48 (AO2),

Start 15:

- Found in 4 of 28 (14.3%) of genes in pham
- Manual Annotations of this start: 3 of 25
- Called 100.0% of time when present
- Phage (with cluster) where this start called: BarretLemon_48 (AO2), GravityBall_48 (AO2), LeeroyJ_48 (AO2), StevieBAY_48 (AO2),

Start 16:

- Found in 2 of 28 (7.1%) of genes in pham
- Manual Annotations of this start: 1 of 25
- Called 100.0% of time when present
- Phage (with cluster) where this start called: BenchScraper_80 (AY), Richie_86 (AY),

Summary by clusters:

There are 4 clusters represented in this pham: AO, AY, AO2, AO1,

Info for manual annotations of cluster AO:

- Start number 13 was manually annotated 1 time for cluster AO.

Info for manual annotations of cluster AO1:

- Start number 14 was manually annotated 7 times for cluster AO1.

Info for manual annotations of cluster AO2:

- Start number 14 was manually annotated 12 times for cluster AO2.
- Start number 15 was manually annotated 3 times for cluster AO2.

Info for manual annotations of cluster AY:

- Start number 13 was manually annotated 1 time for cluster AY.
- Start number 16 was manually annotated 1 time for cluster AY.

Gene Information:

Gene: BarretLemon_48 Start: 36575, Stop: 36988, Start Num: 15

Candidate Starts for BarretLemon_48:

(Start: 15 @36575 has 3 MA's), (20, 36704), (21, 36716), (22, 36740), (26, 36794), (27, 36800), (29, 36812), (30, 36824), (32, 36860), (39, 36935), (45, 36974),

Gene: Beans_47 Start: 36659, Stop: 37063, Start Num: 14

Candidate Starts for Beans_47:

(Start: 14 @36659 has 19 MA's), (17, 36680), (19, 36731), (20, 36788), (29, 36896), (35, 36962), (37, 36998), (39, 37019), (43, 37049),

Gene: BenchScraper_80 Start: 45886, Stop: 46317, Start Num: 16

Candidate Starts for BenchScraper_80:

(Start: 16 @45886 has 1 MA's), (33, 46183),

Gene: BossLady_49 Start: 36654, Stop: 37064, Start Num: 14

Candidate Starts for BossLady_49:

(12, 36642), (Start: 14 @36654 has 19 MA's), (18, 36720), (20, 36783), (23, 36822), (25, 36867), (39, 37014), (45, 37050),

Gene: Brent_47 Start: 36916, Stop: 37317, Start Num: 14

Candidate Starts for Brent_47:

(12, 36904), (Start: 14 @36916 has 19 MA's), (19, 36988), (32, 37198), (35, 37216), (39, 37273),

Gene: EastWest_51 Start: 35918, Stop: 36346, Start Num: 13

Candidate Starts for EastWest_51:

(8, 35849), (11, 35903), (Start: 13 @35918 has 2 MA's), (24, 36122), (25, 36134), (27, 36146), (31, 36188), (32, 36200), (34, 36215), (36, 36224), (42, 36308),

Gene: Franzy_47 Start: 36932, Stop: 37333, Start Num: 14

Candidate Starts for Franzy_47:

(12, 36920), (Start: 14 @36932 has 19 MA's), (19, 37004), (32, 37214), (35, 37232), (39, 37289),

Gene: Globfish_81 Start: 45656, Stop: 46117, Start Num: 13

Candidate Starts for Globfish_81:

(3, 45533), (6, 45572), (Start: 13 @45656 has 2 MA's), (33, 45959), (38, 46013),

Gene: GravityBall_48 Start: 36671, Stop: 37084, Start Num: 15

Candidate Starts for GravityBall_48:

(Start: 15 @36671 has 3 MA's), (20, 36800), (21, 36812), (22, 36836), (27, 36896), (29, 36908), (30, 36920), (32, 36956), (39, 37031), (45, 37070),

Gene: Grekaycon_48 Start: 36550, Stop: 36960, Start Num: 14

Candidate Starts for Grekaycon_48:

(12, 36538), (Start: 14 @36550 has 19 MA's), (18, 36616), (20, 36679), (23, 36718), (25, 36763), (39, 36910), (45, 36946),

Gene: JKerns_48 Start: 36809, Stop: 37219, Start Num: 14
Candidate Starts for JKerns_48:
(Start: 14 @36809 has 19 MA's), (18, 36875), (23, 36977), (25, 37022), (27, 37034), (29, 37046), (39, 37169), (45, 37205),

Gene: Jawnski_46 Start: 36440, Stop: 36841, Start Num: 14
Candidate Starts for Jawnski_46:
(12, 36428), (Start: 14 @36440 has 19 MA's), (19, 36512), (32, 36722), (35, 36740), (39, 36797),

Gene: Jordan_48 Start: 36636, Stop: 37046, Start Num: 14
Candidate Starts for Jordan_48:
(9, 36582), (12, 36624), (Start: 14 @36636 has 19 MA's), (18, 36702), (23, 36804), (25, 36849), (39, 36996), (45, 37032),

Gene: King2_46 Start: 36763, Stop: 37218, Start Num: 14
Candidate Starts for King2_46:
(12, 36751), (Start: 14 @36763 has 19 MA's), (19, 36835), (35, 37069), (39, 37126),

Gene: LeeroyJ_48 Start: 36604, Stop: 37017, Start Num: 15
Candidate Starts for LeeroyJ_48:
(Start: 15 @36604 has 3 MA's), (20, 36733), (21, 36745), (22, 36769), (26, 36823), (27, 36829), (29, 36841), (30, 36853), (32, 36889), (39, 36964), (45, 37003),

Gene: Martha_48 Start: 36667, Stop: 37077, Start Num: 14
Candidate Starts for Martha_48:
(12, 36655), (Start: 14 @36667 has 19 MA's), (18, 36733), (20, 36796), (23, 36835), (25, 36880), (39, 37027), (45, 37063),

Gene: NathanVaag_47 Start: 36675, Stop: 37091, Start Num: 14
Candidate Starts for NathanVaag_47:
(10, 36648), (Start: 14 @36675 has 19 MA's), (19, 36747), (32, 36957), (35, 36975), (39, 37032), (44, 37062),

Gene: Piccoletto_47 Start: 36738, Stop: 37166, Start Num: 14
Candidate Starts for Piccoletto_47:
(Start: 14 @36738 has 19 MA's), (19, 36810), (20, 36867), (21, 36879), (32, 37026), (35, 37044), (39, 37101),

Gene: Richie_86 Start: 48458, Stop: 48889, Start Num: 16
Candidate Starts for Richie_86:
(Start: 16 @48458 has 1 MA's), (33, 48755),

Gene: Seahorse_90 Start: 51836, Stop: 52294, Start Num: 13
Candidate Starts for Seahorse_90:
(1, 51527), (3, 51713), (Start: 13 @51836 has 2 MA's), (33, 52139), (40, 52208),

Gene: Shade_48 Start: 36561, Stop: 36971, Start Num: 14
Candidate Starts for Shade_48:
(Start: 14 @36561 has 19 MA's), (18, 36627), (20, 36690), (23, 36729), (25, 36774), (27, 36786), (29, 36798), (39, 36921), (45, 36957),

Gene: Sicarius2_50 Start: 35904, Stop: 36320, Start Num: 14
Candidate Starts for Sicarius2_50:

(2, 35772), (7, 35838), (Start: 14 @35904 has 19 MA's), (20, 36033), (22, 36069), (28, 36138), (29, 36141), (41, 36288), (46, 36309),

Gene: Sonny_48 Start: 36648, Stop: 37058, Start Num: 14

Candidate Starts for Sonny_48:

(Start: 14 @36648 has 19 MA's), (18, 36714), (20, 36777), (23, 36816), (25, 36861), (39, 37008), (45, 37044),

Gene: StevieBAY_48 Start: 36668, Stop: 37081, Start Num: 15

Candidate Starts for StevieBAY_48:

(Start: 15 @36668 has 3 MA's), (20, 36797), (21, 36809), (22, 36833), (26, 36887), (27, 36893), (29, 36905), (30, 36917), (32, 36953), (39, 37028), (45, 37067),

Gene: TaeYoung_49 Start: 36622, Stop: 37032, Start Num: 14

Candidate Starts for TaeYoung_49:

(12, 36610), (Start: 14 @36622 has 19 MA's), (18, 36688), (20, 36751), (23, 36790), (25, 36835), (39, 36982), (45, 37018),

Gene: Timinator_48 Start: 36535, Stop: 36948, Start Num: 14

Candidate Starts for Timinator_48:

(Start: 14 @36535 has 19 MA's), (20, 36664), (21, 36676), (22, 36700), (27, 36760), (29, 36772), (30, 36784), (32, 36820), (39, 36895), (45, 36934),

Gene: Wyborn_50 Start: 36752, Stop: 37171, Start Num: 14

Candidate Starts for Wyborn_50:

(4, 36632), (5, 36641), (Start: 14 @36752 has 19 MA's), (20, 36884), (22, 36920), (28, 36989), (41, 37139), (46, 37160),

Gene: Zartrosa_48 Start: 36612, Stop: 37022, Start Num: 14

Candidate Starts for Zartrosa_48:

(9, 36558), (12, 36600), (Start: 14 @36612 has 19 MA's), (18, 36678), (20, 36741), (23, 36780), (25, 36825), (39, 36972), (45, 37008),