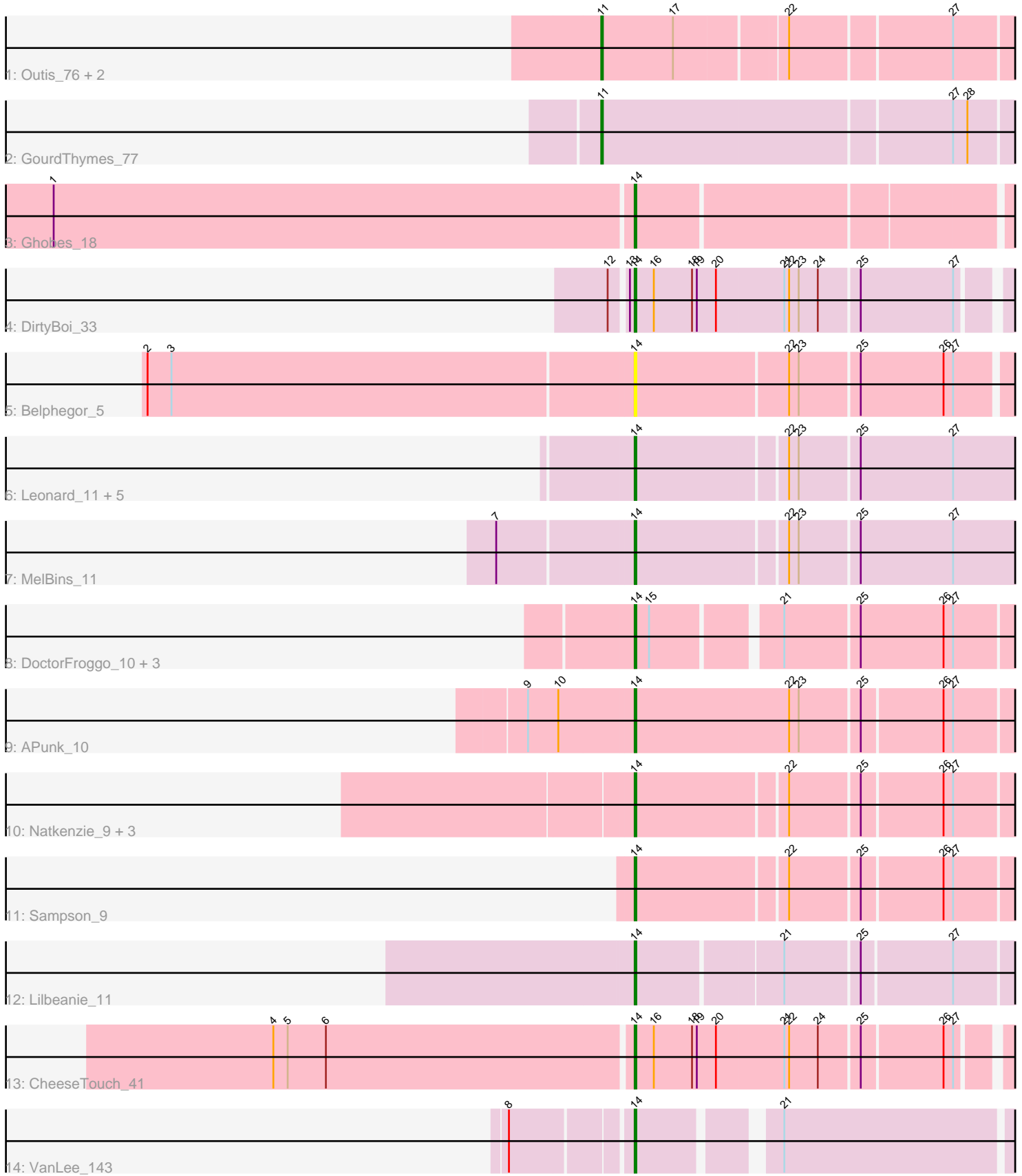


Pham 171701



Note: Tracks are now grouped by subcluster and scaled. Switching in subcluster is indicated by changes in track color. Track scale is now set by default to display the region 30 bp upstream of start 1 to 30 bp downstream of the last possible start. If this default region is judged to be packed too tightly with annotated starts, the track will be further scaled to only show that region of the ORF with annotated starts. This action will be indicated by adding "Zoomed" to the title. For starts, yellow indicates the location of called starts comprised solely of Glimmer/GeneMark auto-annotations, green indicates the location of called starts with at least 1 manual gene annotation.

## Pham 171701 Report

This analysis was run 07/10/24 on database version 566.

Pham number 171701 has 27 members, 5 are drafts.

Phages represented in each track:

- Track 1 : Outis\_76, MerCougar\_78, StarStruck\_76
- Track 2 : GourdThymes\_77
- Track 3 : Ghobes\_18
- Track 4 : DirtyBoi\_33
- Track 5 : Belphegor\_5
- Track 6 : Leonard\_11, Phauci\_4, Ali17\_9, Inspectinfecti\_12, Hans\_13, Phinally\_11
- Track 7 : MelBins\_11
- Track 8 : DoctorFroggo\_10, Zipp\_10, Delrey21\_10, Verity\_10
- Track 9 : APunk\_10
- Track 10 : Natkenzie\_9, Scioto\_9, ViaConlectus\_9, Abblin\_9
- Track 11 : Sampson\_9
- Track 12 : Lilbeanie\_11
- Track 13 : CheeseTouch\_41
- Track 14 : VanLee\_143

### ***Summary of Final Annotations (See graph section above for start numbers):***

The start number called the most often in the published annotations is 14, it was called in 18 of the 22 non-draft genes in the pham.

Genes that call this "Most Annotated" start:

- APunk\_10, Abblin\_9, Ali17\_9, Belphegor\_5, CheeseTouch\_41, Delrey21\_10, DirtyBoi\_33, DoctorFroggo\_10, Ghobes\_18, Hans\_13, Inspectinfecti\_12, Leonard\_11, Lilbeanie\_11, MelBins\_11, Natkenzie\_9, Phauci\_4, Phinally\_11, Sampson\_9, Scioto\_9, VanLee\_143, Verity\_10, ViaConlectus\_9, Zipp\_10,

Genes that have the "Most Annotated" start but do not call it:

- 

Genes that do not have the "Most Annotated" start:

- GourdThymes\_77, MerCougar\_78, Outis\_76, StarStruck\_76,

### **Summary by start number:**

Start 11:

- Found in 4 of 27 ( 14.8% ) of genes in pham
- Manual Annotations of this start: 4 of 22
- Called 100.0% of time when present
- Phage (with cluster) where this start called: GourdThymes\_77 (CS2), MerCougar\_78 (CR2), Outis\_76 (CR2), StarStruck\_76 (CR2),

Start 14:

- Found in 23 of 27 ( 85.2% ) of genes in pham
- Manual Annotations of this start: 18 of 22
- Called 100.0% of time when present
- Phage (with cluster) where this start called: APunk\_10 (DE4), Abblin\_9 (DE4), Ali17\_9 (DE2), Belphegor\_5 (DE), CheeseTouch\_41 (DN1), Delrey21\_10 (DE4), DirtyBoi\_33 (DB), DoctorFroggo\_10 (DE4), Ghobes\_18 (DA), Hans\_13 (DE2), Inspectinfecti\_12 (DE2), Leonard\_11 (DE2), Lilbeanie\_11 (DE5), MelBins\_11 (DE2), Natkenzie\_9 (DE4), Phauci\_4 (DE2), Phinally\_11 (DE2), Sampson\_9 (DE4), Scioto\_9 (DE4), VanLee\_143 (singleton), Verity\_10 (DE4), ViaConlectus\_9 (DE4), Zipp\_10 (DE4),

**Summary by clusters:**

There are 10 clusters represented in this pham: CR2, singleton, DB, DE2, DE, DE4, DE5, DA, DN1, CS2,

Info for manual annotations of cluster CR2:

- Start number 11 was manually annotated 3 times for cluster CR2.

Info for manual annotations of cluster CS2:

- Start number 11 was manually annotated 1 time for cluster CS2.

Info for manual annotations of cluster DA:

- Start number 14 was manually annotated 1 time for cluster DA.

Info for manual annotations of cluster DB:

- Start number 14 was manually annotated 1 time for cluster DB.

Info for manual annotations of cluster DE2:

- Start number 14 was manually annotated 6 times for cluster DE2.

Info for manual annotations of cluster DE4:

- Start number 14 was manually annotated 7 times for cluster DE4.

Info for manual annotations of cluster DE5:

- Start number 14 was manually annotated 1 time for cluster DE5.

Info for manual annotations of cluster DN1:

- Start number 14 was manually annotated 1 time for cluster DN1.

**Gene Information:**

Gene: APunk\_10 Start: 5832, Stop: 6140, Start Num: 14  
Candidate Starts for APunk\_10:  
(9, 5769), (10, 5787), (Start: 14 @5832 has 18 MA's), (22, 5928), (23, 5934), (25, 5970), (26, 6018),  
(27, 6024),

Gene: Abblin\_9 Start: 5353, Stop: 5655, Start Num: 14  
Candidate Starts for Abblin\_9:  
(Start: 14 @5353 has 18 MA's), (22, 5443), (25, 5485), (26, 5533), (27, 5539),

Gene: Ali17\_9 Start: 5663, Stop: 5983, Start Num: 14  
Candidate Starts for Ali17\_9:  
(Start: 14 @5663 has 18 MA's), (22, 5753), (23, 5759), (25, 5795), (27, 5852),

Gene: Belphegor\_5 Start: 2778, Stop: 3092, Start Num: 14  
Candidate Starts for Belphegor\_5:  
(2, 2478), (3, 2493), (Start: 14 @2778 has 18 MA's), (22, 2871), (23, 2877), (25, 2913), (26, 2964), (27,  
2970),

Gene: CheeseTouch\_41 Start: 28097, Stop: 27792, Start Num: 14  
Candidate Starts for CheeseTouch\_41:  
(4, 28319), (5, 28310), (6, 28286), (Start: 14 @28097 has 18 MA's), (16, 28085), (18, 28061), (19,  
28058), (20, 28046), (21, 28004), (22, 28001), (24, 27983), (25, 27959), (26, 27911), (27, 27905),

Gene: Delrey21\_10 Start: 5803, Stop: 6096, Start Num: 14  
Candidate Starts for Delrey21\_10:  
(Start: 14 @5803 has 18 MA's), (15, 5812), (21, 5884), (25, 5929), (26, 5980), (27, 5986),

Gene: DirtyBoi\_33 Start: 28465, Stop: 28172, Start Num: 14  
Candidate Starts for DirtyBoi\_33:  
(12, 28477), (13, 28468), (Start: 14 @28465 has 18 MA's), (16, 28453), (18, 28429), (19, 28426), (20,  
28414), (21, 28372), (22, 28369), (23, 28363), (24, 28351), (25, 28327), (27, 28270),

Gene: DoctorFroggo\_10 Start: 5803, Stop: 6096, Start Num: 14  
Candidate Starts for DoctorFroggo\_10:  
(Start: 14 @5803 has 18 MA's), (15, 5812), (21, 5884), (25, 5929), (26, 5980), (27, 5986),

Gene: Ghobes\_18 Start: 16697, Stop: 16407, Start Num: 14  
Candidate Starts for Ghobes\_18:  
(1, 17057), (Start: 14 @16697 has 18 MA's),

Gene: GourdThymes\_77 Start: 60728, Stop: 60423, Start Num: 11  
Candidate Starts for GourdThymes\_77:  
(Start: 11 @60728 has 4 MA's), (27, 60515), (28, 60506),

Gene: Hans\_13 Start: 6198, Stop: 6524, Start Num: 14  
Candidate Starts for Hans\_13:  
(Start: 14 @6198 has 18 MA's), (22, 6291), (23, 6297), (25, 6333), (27, 6390),

Gene: Inspectinfecti\_12 Start: 6720, Stop: 7040, Start Num: 14  
Candidate Starts for Inspectinfecti\_12:  
(Start: 14 @6720 has 18 MA's), (22, 6810), (23, 6816), (25, 6852), (27, 6909),

Gene: Leonard\_11 Start: 6315, Stop: 6635, Start Num: 14

Candidate Starts for Leonard\_11:

(Start: 14 @6315 has 18 MA's), (22, 6405), (23, 6411), (25, 6447), (27, 6504),

Gene: Lilbeanie\_11 Start: 4525, Stop: 4851, Start Num: 14

Candidate Starts for Lilbeanie\_11:

(Start: 14 @4525 has 18 MA's), (21, 4612), (25, 4657), (27, 4711),

Gene: MelBins\_11 Start: 6093, Stop: 6413, Start Num: 14

Candidate Starts for MelBins\_11:

(7, 6012), (Start: 14 @6093 has 18 MA's), (22, 6183), (23, 6189), (25, 6225), (27, 6282),

Gene: MerCougar\_78 Start: 58752, Stop: 58420, Start Num: 11

Candidate Starts for MerCougar\_78:

(Start: 11 @58752 has 4 MA's), (17, 58707), (22, 58641), (27, 58545),

Gene: Natkenzie\_9 Start: 5353, Stop: 5655, Start Num: 14

Candidate Starts for Natkenzie\_9:

(Start: 14 @5353 has 18 MA's), (22, 5443), (25, 5485), (26, 5533), (27, 5539),

Gene: Outis\_76 Start: 57844, Stop: 57512, Start Num: 11

Candidate Starts for Outis\_76:

(Start: 11 @57844 has 4 MA's), (17, 57799), (22, 57733), (27, 57637),

Gene: Phauci\_4 Start: 2839, Stop: 3165, Start Num: 14

Candidate Starts for Phauci\_4:

(Start: 14 @2839 has 18 MA's), (22, 2932), (23, 2938), (25, 2974), (27, 3031),

Gene: Phinally\_11 Start: 6312, Stop: 6632, Start Num: 14

Candidate Starts for Phinally\_11:

(Start: 14 @6312 has 18 MA's), (22, 6402), (23, 6408), (25, 6444), (27, 6501),

Gene: Sampson\_9 Start: 5298, Stop: 5600, Start Num: 14

Candidate Starts for Sampson\_9:

(Start: 14 @5298 has 18 MA's), (22, 5388), (25, 5430), (26, 5478), (27, 5484),

Gene: Scioto\_9 Start: 5353, Stop: 5655, Start Num: 14

Candidate Starts for Scioto\_9:

(Start: 14 @5353 has 18 MA's), (22, 5443), (25, 5485), (26, 5533), (27, 5539),

Gene: StarStruck\_76 Start: 57844, Stop: 57512, Start Num: 11

Candidate Starts for StarStruck\_76:

(Start: 11 @57844 has 4 MA's), (17, 57799), (22, 57733), (27, 57637),

Gene: VanLee\_143 Start: 75581, Stop: 75288, Start Num: 14

Candidate Starts for VanLee\_143:

(8, 75650), (Start: 14 @75581 has 18 MA's), (21, 75506),

Gene: Verity\_10 Start: 5803, Stop: 6096, Start Num: 14

Candidate Starts for Verity\_10:

(Start: 14 @5803 has 18 MA's), (15, 5812), (21, 5884), (25, 5929), (26, 5980), (27, 5986),

Gene: ViaConlectus\_9 Start: 5353, Stop: 5655, Start Num: 14

Candidate Starts for ViaConlectus\_9:

(Start: 14 @5353 has 18 MA's), (22, 5443), (25, 5485), (26, 5533), (27, 5539),

Gene: Zipp\_10 Start: 5948, Stop: 6241, Start Num: 14

Candidate Starts for Zipp\_10:

(Start: 14 @5948 has 18 MA's), (15, 5957), (21, 6029), (25, 6074), (26, 6125), (27, 6131),