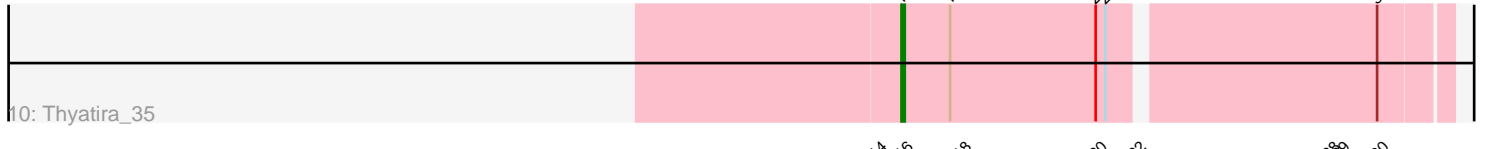
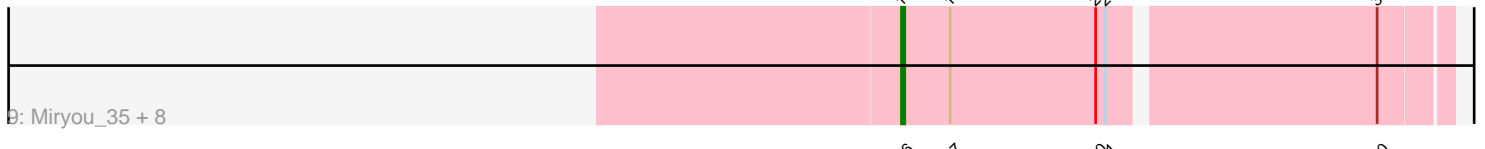
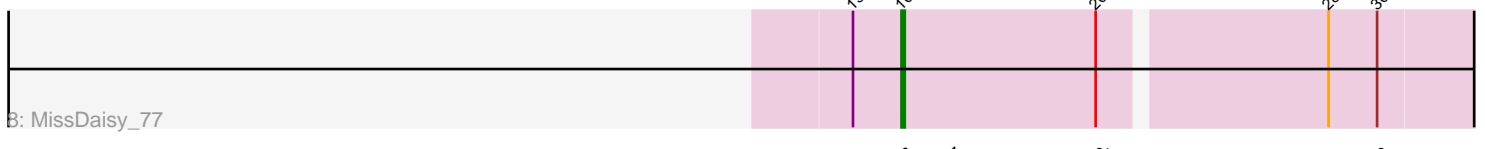
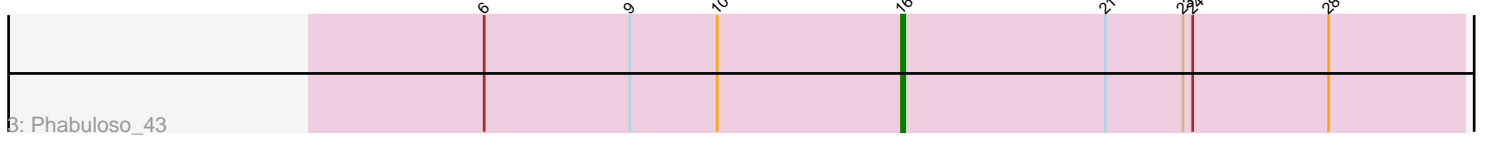
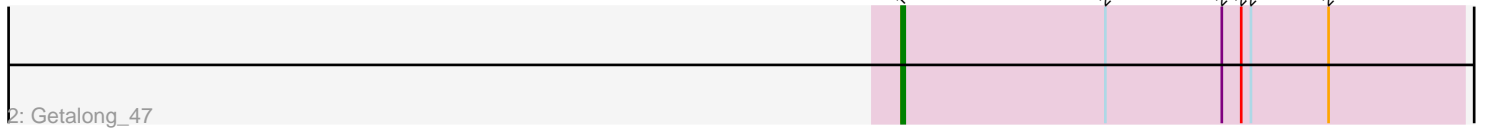
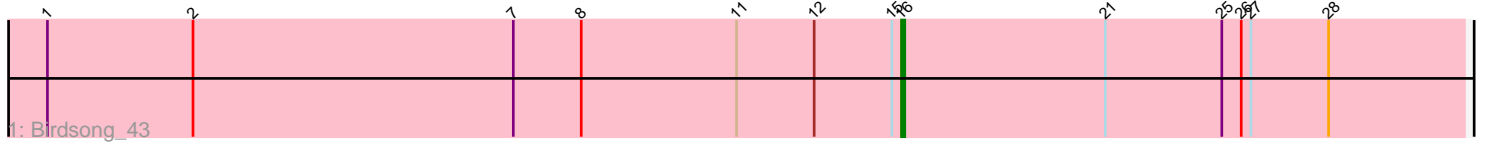


Pham 171733



Note: Tracks are now grouped by subcluster and scaled. Switching in subcluster is indicated by changes in track color. Track scale is now set by default to display the region 30 bp upstream of start 1 to 30 bp downstream of the last possible start. If this default region is judged to be packed too tightly with annotated starts, the track will be further scaled to only show that region of the ORF with annotated starts. This action will be indicated by adding "Zoomed" to the title. For starts, yellow indicates the location of called starts comprised solely of Glimmer/GeneMark auto-annotations, green indicates the location of called starts with at least 1 manual gene annotation.

Pham 171733 Report

This analysis was run 07/10/24 on database version 566.

Pham number 171733 has 24 members, 2 are drafts.

Phages represented in each track:

- Track 1 : Birdsong_43
- Track 2 : Getalong_47
- Track 3 : Phabuloso_43
- Track 4 : Lutum_46, Frickyeah_46, Phistory_46, Kenna_45, Holliday_45, Crater_43
- Track 5 : CheeseTouch_45
- Track 6 : Periwinkle_50
- Track 7 : Kuwabara_38
- Track 8 : MissDaisy_77
- Track 9 : Miryou_35, Guillsminger_35, Gengar_35, Paola_35, OkiRoe_35, SoSeph_35, Feyre_35, Heftyboy_35, Leston_35
- Track 10 : Thyatira_35
- Track 11 : Waterfoul_35

Summary of Final Annotations (See graph section above for start numbers):

The start number called the most often in the published annotations is 16, it was called in 21 of the 22 non-draft genes in the pham.

Genes that call this "Most Annotated" start:

- Birdsong_43, CheeseTouch_45, Crater_43, Feyre_35, Frickyeah_46, Gengar_35, Getalong_47, Guillsminger_35, Heftyboy_35, Holliday_45, Kenna_45, Kuwabara_38, Leston_35, Lutum_46, Miryou_35, MissDaisy_77, OkiRoe_35, Paola_35, Phabuloso_43, Phistory_46, SoSeph_35, Thyatira_35, Waterfoul_35,

Genes that have the "Most Annotated" start but do not call it:

-

Genes that do not have the "Most Annotated" start:

- Periwinkle_50,

Summary by start number:

Start 16:

- Found in 23 of 24 (95.8%) of genes in pham

- Manual Annotations of this start: 21 of 22
- Called 100.0% of time when present
- Phage (with cluster) where this start called: Birdsong_43 (DN), CheeseTouch_45 (DN1), Crater_43 (DN3), Feyre_35 (K5), Frickyeah_46 (DN1), Gengar_35 (K5), Getalong_47 (DN1), Guillsminger_35 (K5), Heftyboy_35 (K5), Holliday_45 (DN1), Kenna_45 (DN1), Kuwabara_38 (DN4), Leston_35 (K5), Lutum_46 (DN1), Miryou_35 (K5), MissDaisy_77 (K4), OkiRoe_35 (K5), Paola_35 (K5), Phabuloso_43 (DN1), Phistory_46 (DN1), SoSeph_35 (K5), Thyatira_35 (K5), Waterfoul_35 (K5),

Start 19:

- Found in 1 of 24 (4.2%) of genes in pham
- Manual Annotations of this start: 1 of 22
- Called 100.0% of time when present
- Phage (with cluster) where this start called: Periwinkle_50 (DN1),

Summary by clusters:

There are 6 clusters represented in this pham: DN, K5, DN4, DN1, DN3, K4,

Info for manual annotations of cluster DN:

- Start number 16 was manually annotated 1 time for cluster DN.

Info for manual annotations of cluster DN1:

- Start number 16 was manually annotated 7 times for cluster DN1.
- Start number 19 was manually annotated 1 time for cluster DN1.

Info for manual annotations of cluster DN3:

- Start number 16 was manually annotated 1 time for cluster DN3.

Info for manual annotations of cluster DN4:

- Start number 16 was manually annotated 1 time for cluster DN4.

Info for manual annotations of cluster K4:

- Start number 16 was manually annotated 1 time for cluster K4.

Info for manual annotations of cluster K5:

- Start number 16 was manually annotated 10 times for cluster K5.

Gene Information:

Gene: Birdsong_43 Start: 31367, Stop: 31540, Start Num: 16

Candidate Starts for Birdsong_43:

(1, 31103), (2, 31148), (7, 31247), (8, 31268), (11, 31316), (12, 31340), (15, 31364), (Start: 16 @31367 has 21 MA's), (21, 31430), (25, 31466), (26, 31472), (27, 31475), (28, 31499),

Gene: CheeseTouch_45 Start: 28896, Stop: 29069, Start Num: 16

Candidate Starts for CheeseTouch_45:

(4, 28746), (5, 28749), (13, 28881), (15, 28893), (Start: 16 @28896 has 21 MA's), (21, 28959), (25, 28995), (28, 29028),

Gene: Crater_43 Start: 30258, Stop: 30431, Start Num: 16

Candidate Starts for Crater_43:

(Start: 16 @30258 has 21 MA's), (21, 30321), (23, 30345), (24, 30348), (28, 30390),

Gene: Feyre_35 Start: 30060, Stop: 30221, Start Num: 16

Candidate Starts for Feyre_35:

(Start: 16 @30060 has 21 MA's), (17, 30075), (20, 30120), (21, 30123), (30, 30201),

Gene: Frickyeah_46 Start: 30210, Stop: 30383, Start Num: 16

Candidate Starts for Frickyeah_46:

(Start: 16 @30210 has 21 MA's), (21, 30273), (23, 30297), (24, 30300), (28, 30342),

Gene: Gengar_35 Start: 30170, Stop: 30331, Start Num: 16

Candidate Starts for Gengar_35:

(Start: 16 @30170 has 21 MA's), (17, 30185), (20, 30230), (21, 30233), (30, 30311),

Gene: Getalong_47 Start: 32994, Stop: 33167, Start Num: 16

Candidate Starts for Getalong_47:

(Start: 16 @32994 has 21 MA's), (21, 33057), (25, 33093), (26, 33099), (27, 33102), (28, 33126),

Gene: Guillsminger_35 Start: 30141, Stop: 30302, Start Num: 16

Candidate Starts for Guillsminger_35:

(Start: 16 @30141 has 21 MA's), (17, 30156), (20, 30201), (21, 30204), (30, 30282),

Gene: Heftyboy_35 Start: 30287, Stop: 30448, Start Num: 16

Candidate Starts for Heftyboy_35:

(Start: 16 @30287 has 21 MA's), (17, 30302), (20, 30347), (21, 30350), (30, 30428),

Gene: Holliday_45 Start: 30785, Stop: 30958, Start Num: 16

Candidate Starts for Holliday_45:

(Start: 16 @30785 has 21 MA's), (21, 30848), (23, 30872), (24, 30875), (28, 30917),

Gene: Kenna_45 Start: 31121, Stop: 31294, Start Num: 16

Candidate Starts for Kenna_45:

(Start: 16 @31121 has 21 MA's), (21, 31184), (23, 31208), (24, 31211), (28, 31253),

Gene: Kuwabara_38 Start: 29852, Stop: 30025, Start Num: 16

Candidate Starts for Kuwabara_38:

(3, 29657), (9, 29768), (10, 29795), (Start: 16 @29852 has 21 MA's), (21, 29915), (23, 29939), (24, 29942), (28, 29984),

Gene: Leston_35 Start: 30271, Stop: 30432, Start Num: 16

Candidate Starts for Leston_35:

(Start: 16 @30271 has 21 MA's), (17, 30286), (20, 30331), (21, 30334), (30, 30412),

Gene: Lutum_46 Start: 31121, Stop: 31294, Start Num: 16

Candidate Starts for Lutum_46:

(Start: 16 @31121 has 21 MA's), (21, 31184), (23, 31208), (24, 31211), (28, 31253),

Gene: Miryou_35 Start: 30126, Stop: 30287, Start Num: 16

Candidate Starts for Miryou_35:

(Start: 16 @30126 has 21 MA's), (17, 30141), (20, 30186), (21, 30189), (30, 30267),

Gene: MissDaisy_77 Start: 48998, Stop: 49168, Start Num: 16

Candidate Starts for MissDaisy_77:

(13, 48983), (Start: 16 @48998 has 21 MA's), (20, 49058), (28, 49124), (30, 49139),

Gene: OkiRoe_35 Start: 30143, Stop: 30304, Start Num: 16

Candidate Starts for OkiRoe_35:

(Start: 16 @30143 has 21 MA's), (17, 30158), (20, 30203), (21, 30206), (30, 30284),

Gene: Paola_35 Start: 30141, Stop: 30302, Start Num: 16

Candidate Starts for Paola_35:

(Start: 16 @30141 has 21 MA's), (17, 30156), (20, 30201), (21, 30204), (30, 30282),

Gene: Periwinkle_50 Start: 33020, Stop: 33160, Start Num: 19

Candidate Starts for Periwinkle_50:

(Start: 19 @33020 has 1 MA's), (21, 33050), (25, 33086), (26, 33092), (27, 33095), (28, 33119),

Gene: Phabuloso_43 Start: 30837, Stop: 31010, Start Num: 16

Candidate Starts for Phabuloso_43:

(6, 30708), (9, 30753), (10, 30780), (Start: 16 @30837 has 21 MA's), (21, 30900), (23, 30924), (24, 30927), (28, 30969),

Gene: Phistory_46 Start: 31472, Stop: 31645, Start Num: 16

Candidate Starts for Phistory_46:

(Start: 16 @31472 has 21 MA's), (21, 31535), (23, 31559), (24, 31562), (28, 31604),

Gene: SoSeph_35 Start: 30287, Stop: 30448, Start Num: 16

Candidate Starts for SoSeph_35:

(Start: 16 @30287 has 21 MA's), (17, 30302), (20, 30347), (21, 30350), (30, 30428),

Gene: Thyatira_35 Start: 30141, Stop: 30302, Start Num: 16

Candidate Starts for Thyatira_35:

(Start: 16 @30141 has 21 MA's), (17, 30156), (20, 30201), (21, 30204), (30, 30282),

Gene: Waterfoul_35 Start: 30197, Stop: 30364, Start Num: 16

Candidate Starts for Waterfoul_35:

(14, 30191), (Start: 16 @30197 has 21 MA's), (18, 30215), (20, 30257), (22, 30269), (28, 30329), (29, 30332), (30, 30344),