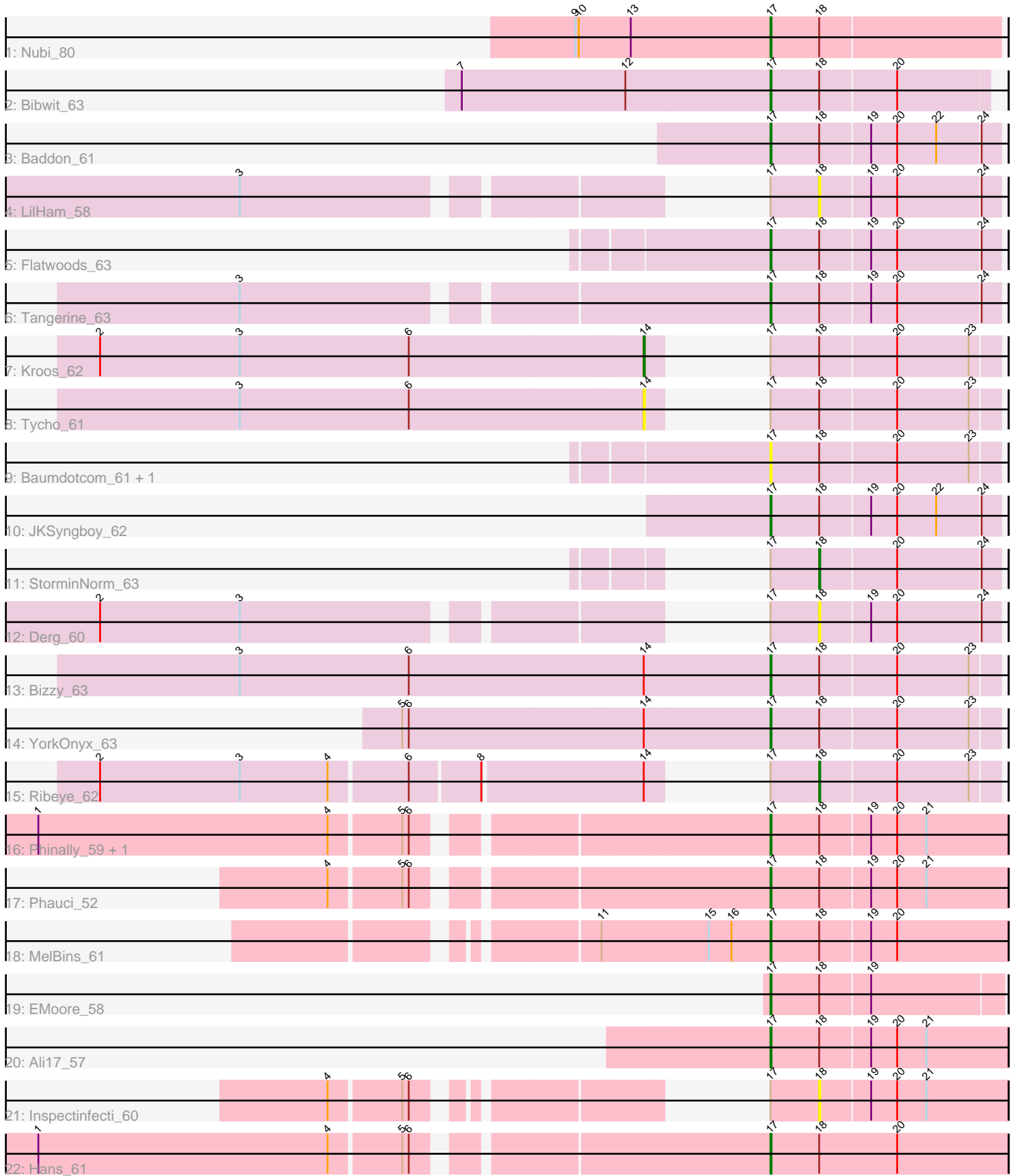


Pham 171735



Note: Tracks are now grouped by subcluster and scaled. Switching in subcluster is indicated by changes in track color. Track scale is now set by default to display the region 30 bp upstream of start 1 to 30 bp downstream of the last possible start. If this default region is judged to be packed too tightly with annotated starts, the track will be further scaled to only show that region of the ORF with annotated starts. This action will be indicated by adding "Zoomed" to the title. For starts, yellow indicates the location of called starts comprised solely of Glimmer/GeneMark auto-annotations, green indicates the location of called starts with at least 1 manual gene annotation.

Pham 171735 Report

This analysis was run 07/10/24 on database version 566.

Pham number 171735 has 24 members, 6 are drafts.

Phages represented in each track:

- Track 1 : Nubi_80
- Track 2 : Bibwit_63
- Track 3 : Baddon_61
- Track 4 : LilHam_58
- Track 5 : Flatwoods_63
- Track 6 : Tangerine_63
- Track 7 : Kroos_62
- Track 8 : Tycho_61
- Track 9 : Baumdotcom_61, Kwobi_65
- Track 10 : JKSyngboy_62
- Track 11 : StorminNorm_63
- Track 12 : Derg_60
- Track 13 : Bizzy_63
- Track 14 : YorkOnyx_63
- Track 15 : Ribeye_62
- Track 16 : Phinally_59, Leonard_59
- Track 17 : Phauci_52
- Track 18 : MelBins_61
- Track 19 : EMoore_58
- Track 20 : Ali17_57
- Track 21 : Inspectinfecti_60
- Track 22 : Hans_61

Summary of Final Annotations (See graph section above for start numbers):

The start number called the most often in the published annotations is 17, it was called in 15 of the 18 non-draft genes in the pham.

Genes that call this "Most Annotated" start:

- Ali17_57, Baddon_61, Baumdotcom_61, Bibwit_63, Bizzy_63, EMoore_58, Flatwoods_63, Hans_61, JKSyngboy_62, Kwobi_65, Leonard_59, MelBins_61, Nubi_80, Phauci_52, Phinally_59, Tangerine_63, YorkOnyx_63,

Genes that have the "Most Annotated" start but do not call it:

- Derg_60, Inspectinfecti_60, Kroos_62, LilHam_58, Ribeye_62, StorminNorm_63, Tycho_61,

Genes that do not have the "Most Annotated" start:

-

Summary by start number:

Start 14:

- Found in 5 of 24 (20.8%) of genes in pham
- Manual Annotations of this start: 1 of 18
- Called 40.0% of time when present
- Phage (with cluster) where this start called: Kroos_62 (DE1), Tycho_61 (DE1),

Start 17:

- Found in 24 of 24 (100.0%) of genes in pham
- Manual Annotations of this start: 15 of 18
- Called 70.8% of time when present
- Phage (with cluster) where this start called: Ali17_57 (DE2), Baddon_61 (DE1), Baumdotcom_61 (DE1), Bibwit_63 (DE1), Bizzy_63 (DE1), EMOore_58 (DE2), Flatwoods_63 (DE1), Hans_61 (DE2), JKSyngboy_62 (DE1), Kwobi_65 (DE1), Leonard_59 (DE2), MelBins_61 (DE2), Nubi_80 (DC1), Phauci_52 (DE2), Phinally_59 (DE2), Tangerine_63 (DE1), YorkOnyx_63 (DE1),

Start 18:

- Found in 24 of 24 (100.0%) of genes in pham
- Manual Annotations of this start: 2 of 18
- Called 20.8% of time when present
- Phage (with cluster) where this start called: Derg_60 (DE1), Inspectinfecti_60 (DE2), LilHam_58 (DE1), Ribeye_62 (DE1), StorminNorm_63 (DE1),

Summary by clusters:

There are 3 clusters represented in this pham: DE1, DE2, DC1,

Info for manual annotations of cluster DC1:

- Start number 17 was manually annotated 1 time for cluster DC1.

Info for manual annotations of cluster DE1:

- Start number 14 was manually annotated 1 time for cluster DE1.
- Start number 17 was manually annotated 7 times for cluster DE1.
- Start number 18 was manually annotated 2 times for cluster DE1.

Info for manual annotations of cluster DE2:

- Start number 17 was manually annotated 7 times for cluster DE2.

Gene Information:

Gene: Ali17_57 Start: 47018, Stop: 47233, Start Num: 17

Candidate Starts for Ali17_57:

(Start: 17 @47018 has 15 MA's), (Start: 18 @47063 has 2 MA's), (19, 47108), (20, 47132), (21, 47159),

Gene: Baddon_61 Start: 49615, Stop: 49821, Start Num: 17

Candidate Starts for Baddon_61:

(Start: 17 @49615 has 15 MA's), (Start: 18 @49660 has 2 MA's), (19, 49705), (20, 49729), (22, 49765), (24, 49804),

Gene: Baumdotcom_61 Start: 48916, Stop: 49122, Start Num: 17

Candidate Starts for Baumdotcom_61:

(Start: 17 @48916 has 15 MA's), (Start: 18 @48961 has 2 MA's), (20, 49030), (23, 49096),

Gene: Bibwit_63 Start: 49471, Stop: 49668, Start Num: 17

Candidate Starts for Bibwit_63:

(7, 49285), (12, 49435), (Start: 17 @49471 has 15 MA's), (Start: 18 @49516 has 2 MA's), (20, 49585),

Gene: Bizzy_63 Start: 48811, Stop: 49017, Start Num: 17

Candidate Starts for Bizzy_63:

(3, 48424), (6, 48580), (Start: 14 @48793 has 1 MA's), (Start: 17 @48811 has 15 MA's), (Start: 18 @48856 has 2 MA's), (20, 48925), (23, 48991),

Gene: Derg_60 Start: 47653, Stop: 47814, Start Num: 18

Candidate Starts for Derg_60:

(2, 47125), (3, 47254), (Start: 17 @47608 has 15 MA's), (Start: 18 @47653 has 2 MA's), (19, 47698), (20, 47722), (24, 47797),

Gene: EMoore_58 Start: 48525, Stop: 48734, Start Num: 17

Candidate Starts for EMoore_58:

(Start: 17 @48525 has 15 MA's), (Start: 18 @48570 has 2 MA's), (19, 48615),

Gene: Flatwoods_63 Start: 48489, Stop: 48695, Start Num: 17

Candidate Starts for Flatwoods_63:

(Start: 17 @48489 has 15 MA's), (Start: 18 @48534 has 2 MA's), (19, 48579), (20, 48603), (24, 48678),

Gene: Hans_61 Start: 47742, Stop: 47960, Start Num: 17

Candidate Starts for Hans_61:

(1, 47208), (4, 47475), (5, 47538), (6, 47544), (Start: 17 @47742 has 15 MA's), (Start: 18 @47787 has 2 MA's), (20, 47859),

Gene: Inspectinfecti_60 Start: 47912, Stop: 48082, Start Num: 18

Candidate Starts for Inspectinfecti_60:

(4, 47606), (5, 47669), (6, 47675), (Start: 17 @47867 has 15 MA's), (Start: 18 @47912 has 2 MA's), (19, 47957), (20, 47981), (21, 48008),

Gene: JKSyngboy_62 Start: 49841, Stop: 50047, Start Num: 17

Candidate Starts for JKSyngboy_62:

(Start: 17 @49841 has 15 MA's), (Start: 18 @49886 has 2 MA's), (19, 49931), (20, 49955), (22, 49991), (24, 50030),

Gene: Kroos_62 Start: 49360, Stop: 49584, Start Num: 14

Candidate Starts for Kroos_62:

(2, 48862), (3, 48991), (6, 49147), (Start: 14 @49360 has 1 MA's), (Start: 17 @49378 has 15 MA's), (Start: 18 @49423 has 2 MA's), (20, 49492), (23, 49558),

Gene: Kwobi_65 Start: 49987, Stop: 50193, Start Num: 17

Candidate Starts for Kwobi_65:

(Start: 17 @49987 has 15 MA's), (Start: 18 @50032 has 2 MA's), (20, 50101), (23, 50167),

Gene: Leonard_59 Start: 47944, Stop: 48159, Start Num: 17

Candidate Starts for Leonard_59:

(1, 47410), (4, 47677), (5, 47740), (6, 47746), (Start: 17 @47944 has 15 MA's), (Start: 18 @47989 has 2 MA's), (19, 48034), (20, 48058), (21, 48085),

Gene: LilHam_58 Start: 46932, Stop: 47093, Start Num: 18

Candidate Starts for LilHam_58:

(3, 46533), (Start: 17 @46887 has 15 MA's), (Start: 18 @46932 has 2 MA's), (19, 46977), (20, 47001), (24, 47076),

Gene: MelBins_61 Start: 48205, Stop: 48420, Start Num: 17

Candidate Starts for MelBins_61:

(11, 48052), (15, 48148), (16, 48169), (Start: 17 @48205 has 15 MA's), (Start: 18 @48250 has 2 MA's), (19, 48295), (20, 48319),

Gene: Nubi_80 Start: 52419, Stop: 52628, Start Num: 17

Candidate Starts for Nubi_80:

(9, 52338), (10, 52341), (13, 52389), (Start: 17 @52419 has 15 MA's), (Start: 18 @52464 has 2 MA's),

Gene: Phauci_52 Start: 44793, Stop: 45008, Start Num: 17

Candidate Starts for Phauci_52:

(4, 44526), (5, 44589), (6, 44595), (Start: 17 @44793 has 15 MA's), (Start: 18 @44838 has 2 MA's), (19, 44883), (20, 44907), (21, 44934),

Gene: Phinally_59 Start: 47941, Stop: 48156, Start Num: 17

Candidate Starts for Phinally_59:

(1, 47407), (4, 47674), (5, 47737), (6, 47743), (Start: 17 @47941 has 15 MA's), (Start: 18 @47986 has 2 MA's), (19, 48031), (20, 48055), (21, 48082),

Gene: Ribeye_62 Start: 48731, Stop: 48892, Start Num: 18

Candidate Starts for Ribeye_62:

(2, 48188), (3, 48317), (4, 48398), (6, 48467), (8, 48527), (Start: 14 @48668 has 1 MA's), (Start: 17 @48686 has 15 MA's), (Start: 18 @48731 has 2 MA's), (20, 48800), (23, 48866),

Gene: StorminNorm_63 Start: 49532, Stop: 49693, Start Num: 18

Candidate Starts for StorminNorm_63:

(Start: 17 @49487 has 15 MA's), (Start: 18 @49532 has 2 MA's), (20, 49601), (24, 49676),

Gene: Tangerine_63 Start: 48997, Stop: 49203, Start Num: 17

Candidate Starts for Tangerine_63:

(3, 48643), (Start: 17 @48997 has 15 MA's), (Start: 18 @49042 has 2 MA's), (19, 49087), (20, 49111), (24, 49186),

Gene: Tycho_61 Start: 48782, Stop: 49006, Start Num: 14

Candidate Starts for Tycho_61:

(3, 48413), (6, 48569), (Start: 14 @48782 has 1 MA's), (Start: 17 @48800 has 15 MA's), (Start: 18 @48845 has 2 MA's), (20, 48914), (23, 48980),

Gene: YorkOnyx_63 Start: 48830, Stop: 49036, Start Num: 17

Candidate Starts for YorkOnyx_63:

(5, 48593), (6, 48599), (Start: 14 @48812 has 1 MA's), (Start: 17 @48830 has 15 MA's), (Start: 18 @48875 has 2 MA's), (20, 48944), (23, 49010),