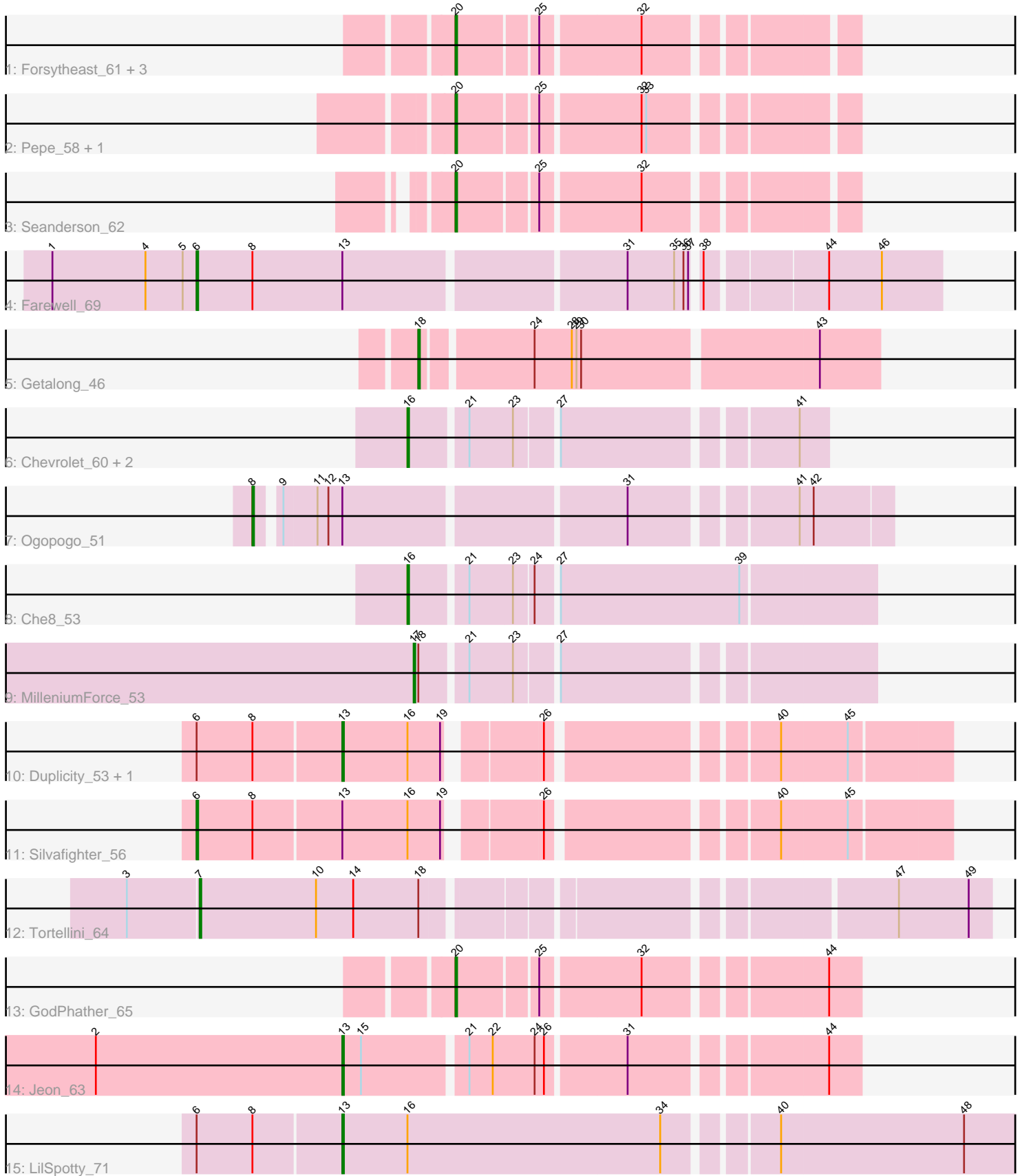


Pham 171763



Note: Tracks are now grouped by subcluster and scaled. Switching in subcluster is indicated by changes in track color. Track scale is now set by default to display the region 30 bp upstream of start 1 to 30 bp downstream of the last possible start. If this default region is judged to be packed too tightly with annotated starts, the track will be further scaled to only show that region of the ORF with annotated starts. This action will be indicated by adding "Zoomed" to the title. For starts, yellow indicates the location of called starts comprised solely of Glimmer/GeneMark auto-annotations, green indicates the location of called starts with at least 1 manual gene annotation.

Pham 171763 Report

This analysis was run 07/10/24 on database version 566.

Pham number 171763 has 22 members, 2 are drafts.

Phages represented in each track:

- Track 1 : Forsytheast_61, Moose_61, Bruns_61, SwissCheese_63
- Track 2 : Pepe_58, SkiPole_67
- Track 3 : Seanderson_62
- Track 4 : Farewell_69
- Track 5 : Getalong_46
- Track 6 : Chevrolet_60, Royals2015_53, ArcusAngelus_54
- Track 7 : Ogopogo_51
- Track 8 : Che8_53
- Track 9 : MilleniumForce_53
- Track 10 : Duplicity_53, Melville_59
- Track 11 : Silvafighter_56
- Track 12 : Tortellini_64
- Track 13 : GodPhather_65
- Track 14 : Jeon_63
- Track 15 : LilSpotty_71

Summary of Final Annotations (See graph section above for start numbers):

The start number called the most often in the published annotations is 20, it was called in 8 of the 20 non-draft genes in the pham.

Genes that call this "Most Annotated" start:

- Bruns_61, Forsytheast_61, GodPhather_65, Moose_61, Pepe_58, Seanderson_62, SkiPole_67, SwissCheese_63,

Genes that have the "Most Annotated" start but do not call it:

-

Genes that do not have the "Most Annotated" start:

- ArcusAngelus_54, Che8_53, Chevrolet_60, Duplicity_53, Farewell_69, Getalong_46, Jeon_63, LilSpotty_71, Melville_59, MilleniumForce_53, Ogopogo_51, Royals2015_53, Silvafighter_56, Tortellini_64,

Summary by start number:

Start 6:

- Found in 5 of 22 (22.7%) of genes in pham
- Manual Annotations of this start: 2 of 20
- Called 40.0% of time when present
- Phage (with cluster) where this start called: Farewell_69 (AF), Silvafighter_56 (N),

Start 7:

- Found in 1 of 22 (4.5%) of genes in pham
- Manual Annotations of this start: 1 of 20
- Called 100.0% of time when present
- Phage (with cluster) where this start called: Tortellini_64 (P2),

Start 8:

- Found in 6 of 22 (27.3%) of genes in pham
- Manual Annotations of this start: 1 of 20
- Called 16.7% of time when present
- Phage (with cluster) where this start called: Ogopogo_51 (F1),

Start 13:

- Found in 7 of 22 (31.8%) of genes in pham
- Manual Annotations of this start: 3 of 20
- Called 57.1% of time when present
- Phage (with cluster) where this start called: Duplicity_53 (N), Jeon_63 (W), LilSpotty_71 (singleton), Melville_59 (N),

Start 16:

- Found in 8 of 22 (36.4%) of genes in pham
- Manual Annotations of this start: 3 of 20
- Called 50.0% of time when present
- Phage (with cluster) where this start called: ArcusAngelus_54 (F1), Che8_53 (F1), Chevrolet_60 (F1), Royals2015_53 (F1),

Start 17:

- Found in 1 of 22 (4.5%) of genes in pham
- Manual Annotations of this start: 1 of 20
- Called 100.0% of time when present
- Phage (with cluster) where this start called: MilleniumForce_53 (F1),

Start 18:

- Found in 3 of 22 (13.6%) of genes in pham
- Manual Annotations of this start: 1 of 20
- Called 33.3% of time when present
- Phage (with cluster) where this start called: Getalong_46 (DN1),

Start 20:

- Found in 8 of 22 (36.4%) of genes in pham
- Manual Annotations of this start: 8 of 20
- Called 100.0% of time when present
- Phage (with cluster) where this start called: Bruns_61 (A1), Forsytheast_61 (A1), GodPhather_65 (W), Moose_61 (A1), Pepe_58 (A1), Seanderson_62 (A1), SkiPole_67 (A1), SwissCheese_63 (A1),

Summary by clusters:

There are 8 clusters represented in this pham: P2, F1, singleton, AF, N, A1, DN1, W,

Info for manual annotations of cluster A1:

- Start number 20 was manually annotated 7 times for cluster A1.

Info for manual annotations of cluster AF:

- Start number 6 was manually annotated 1 time for cluster AF.

Info for manual annotations of cluster DN1:

- Start number 18 was manually annotated 1 time for cluster DN1.

Info for manual annotations of cluster F1:

- Start number 8 was manually annotated 1 time for cluster F1.
- Start number 16 was manually annotated 3 times for cluster F1.
- Start number 17 was manually annotated 1 time for cluster F1.

Info for manual annotations of cluster N:

- Start number 6 was manually annotated 1 time for cluster N.
- Start number 13 was manually annotated 1 time for cluster N.

Info for manual annotations of cluster P2:

- Start number 7 was manually annotated 1 time for cluster P2.

Info for manual annotations of cluster W:

- Start number 13 was manually annotated 1 time for cluster W.
- Start number 20 was manually annotated 1 time for cluster W.

Gene Information:

Gene: ArcusAngelus_54 Start: 38017, Stop: 38256, Start Num: 16

Candidate Starts for ArcusAngelus_54:

(Start: 16 @38017 has 3 MA's), (21, 38050), (23, 38077), (27, 38101), (41, 38239),

Gene: Bruns_61 Start: 39972, Stop: 39745, Start Num: 20

Candidate Starts for Bruns_61:

(Start: 20 @39972 has 8 MA's), (25, 39924), (32, 39864),

Gene: Che8_53 Start: 37842, Stop: 38123, Start Num: 16

Candidate Starts for Che8_53:

(Start: 16 @37842 has 3 MA's), (21, 37875), (23, 37902), (24, 37914), (27, 37926), (39, 38040),

Gene: Chevrolet_60 Start: 38018, Stop: 38257, Start Num: 16

Candidate Starts for Chevrolet_60:

(Start: 16 @38018 has 3 MA's), (21, 38051), (23, 38078), (27, 38102), (41, 38240),

Gene: Duplicity_53 Start: 35954, Stop: 36301, Start Num: 13

Candidate Starts for Duplicity_53:

(Start: 6 @35864 has 2 MA's), (Start: 8 @35900 has 1 MA's), (Start: 13 @35954 has 3 MA's), (Start: 16 @35996 has 3 MA's), (19, 36017), (26, 36068), (40, 36197), (45, 36239),

Gene: Farewell_69 Start: 47142, Stop: 47591, Start Num: 6

Candidate Starts for Farewell_69:

(1, 47049), (4, 47109), (5, 47133), (Start: 6 @47142 has 2 MA's), (Start: 8 @47178 has 1 MA's), (Start: 13 @47235 has 3 MA's), (31, 47406), (35, 47436), (36, 47442), (37, 47445), (38, 47448), (44, 47520), (46, 47553),

Gene: Forsytheast_61 Start: 40140, Stop: 39913, Start Num: 20

Candidate Starts for Forsytheast_61:

(Start: 20 @40140 has 8 MA's), (25, 40092), (32, 40032),

Gene: Getalong_46 Start: 32723, Stop: 33001, Start Num: 18

Candidate Starts for Getalong_46:

(Start: 18 @32723 has 1 MA's), (24, 32789), (28, 32813), (29, 32816), (30, 32819), (43, 32963),

Gene: GodPhather_65 Start: 49176, Stop: 49409, Start Num: 20

Candidate Starts for GodPhather_65:

(Start: 20 @49176 has 8 MA's), (25, 49224), (32, 49284), (44, 49389),

Gene: Jeon_63 Start: 48868, Stop: 49173, Start Num: 13

Candidate Starts for Jeon_63:

(2, 48709), (Start: 13 @48868 has 3 MA's), (15, 48880), (21, 48943), (22, 48958), (24, 48985), (26, 48991), (31, 49039), (44, 49153),

Gene: LilSpotty_71 Start: 43082, Stop: 43513, Start Num: 13

Candidate Starts for LilSpotty_71:

(Start: 6 @42992 has 2 MA's), (Start: 8 @43028 has 1 MA's), (Start: 13 @43082 has 3 MA's), (Start: 16 @43124 has 3 MA's), (34, 43286), (40, 43349), (48, 43466),

Gene: Melville_59 Start: 36268, Stop: 36615, Start Num: 13

Candidate Starts for Melville_59:

(Start: 6 @36178 has 2 MA's), (Start: 8 @36214 has 1 MA's), (Start: 13 @36268 has 3 MA's), (Start: 16 @36310 has 3 MA's), (19, 36331), (26, 36382), (40, 36511), (45, 36553),

Gene: MilleniumForce_53 Start: 38559, Stop: 38825, Start Num: 17

Candidate Starts for MilleniumForce_53:

(Start: 17 @38559 has 1 MA's), (Start: 18 @38562 has 1 MA's), (21, 38589), (23, 38616), (27, 38640),

Gene: Moose_61 Start: 40140, Stop: 39913, Start Num: 20

Candidate Starts for Moose_61:

(Start: 20 @40140 has 8 MA's), (25, 40092), (32, 40032),

Gene: Ogotogo_51 Start: 36143, Stop: 36514, Start Num: 8

Candidate Starts for Ogotogo_51:

(Start: 8 @36143 has 1 MA's), (9, 36155), (11, 36176), (12, 36182), (Start: 13 @36191 has 3 MA's), (31, 36362), (41, 36458), (42, 36467),

Gene: Pepe_58 Start: 39571, Stop: 39344, Start Num: 20

Candidate Starts for Pepe_58:

(Start: 20 @39571 has 8 MA's), (25, 39523), (32, 39463), (33, 39460),

Gene: Royals2015_53 Start: 36891, Stop: 37130, Start Num: 16

Candidate Starts for Royals2015_53:

(Start: 16 @36891 has 3 MA's), (21, 36924), (23, 36951), (27, 36975), (41, 37113),

Gene: Seanderson_62 Start: 42352, Stop: 42125, Start Num: 20

Candidate Starts for Seanderson_62:

(Start: 20 @42352 has 8 MA's), (25, 42304), (32, 42244),

Gene: Silvafighter_56 Start: 36170, Stop: 36607, Start Num: 6

Candidate Starts for Silvafighter_56:

(Start: 6 @36170 has 2 MA's), (Start: 8 @36206 has 1 MA's), (Start: 13 @36260 has 3 MA's), (Start: 16 @36302 has 3 MA's), (19, 36323), (26, 36374), (40, 36503), (45, 36545),

Gene: SkiPole_67 Start: 41615, Stop: 41388, Start Num: 20

Candidate Starts for SkiPole_67:

(Start: 20 @41615 has 8 MA's), (25, 41567), (32, 41507), (33, 41504),

Gene: SwissCheese_63 Start: 40640, Stop: 40413, Start Num: 20

Candidate Starts for SwissCheese_63:

(Start: 20 @40640 has 8 MA's), (25, 40592), (32, 40532),

Gene: Tortellini_64 Start: 43747, Stop: 44214, Start Num: 7

Candidate Starts for Tortellini_64:

(3, 43702), (Start: 7 @43747 has 1 MA's), (10, 43822), (14, 43846), (Start: 18 @43888 has 1 MA's), (47, 44155), (49, 44200),