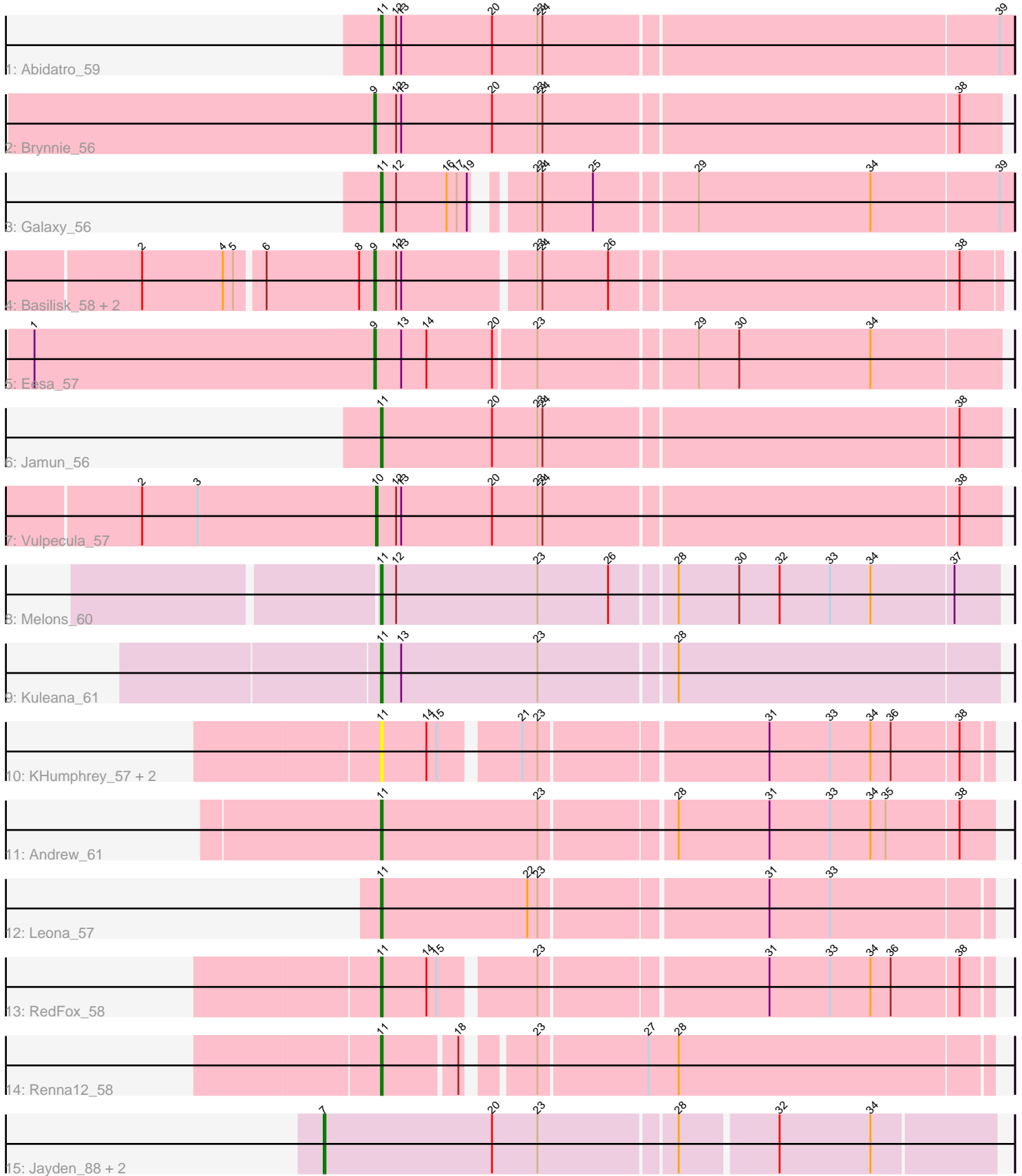


Pham 171779



Note: Tracks are now grouped by subcluster and scaled. Switching in subcluster is indicated by changes in track color. Track scale is now set by default to display the region 30 bp upstream of start 1 to 30 bp downstream of the last possible start. If this default region is judged to be packed too tightly with annotated starts, the track will be further scaled to only show that region of the ORF with annotated starts. This action will be indicated by adding "Zoomed" to the title. For starts, yellow indicates the location of called starts comprised solely of Glimmer/GeneMark auto-annotations, green indicates the location of called starts with at least 1 manual gene annotation.

Pham 171779 Report

This analysis was run 07/10/24 on database version 566.

Pham number 171779 has 21 members, 4 are drafts.

Phages represented in each track:

- Track 1 : Abidatro_59
- Track 2 : Brynnie_56
- Track 3 : Galaxy_56
- Track 4 : Basilisk_58, Chickaboom_63, Ruchi_57
- Track 5 : Eesa_57
- Track 6 : Jamun_56
- Track 7 : Vulpecula_57
- Track 8 : Melons_60
- Track 9 : Kuleana_61
- Track 10 : KHumphrey_57, Juno112_58, PhluffyCoco_58
- Track 11 : Andrew_61
- Track 12 : Leona_57
- Track 13 : RedFox_58
- Track 14 : Renna12_58
- Track 15 : Jayden_88, Gina_93, Teamocil_93

Summary of Final Annotations (See graph section above for start numbers):

The start number called the most often in the published annotations is 11, it was called in 9 of the 17 non-draft genes in the pham.

Genes that call this "Most Annotated" start:

- Abidatro_59, Andrew_61, Galaxy_56, Jamun_56, Juno112_58, KHumphrey_57, Kuleana_61, Leona_57, Melons_60, PhluffyCoco_58, RedFox_58, Renna12_58,

Genes that have the "Most Annotated" start but do not call it:

-

Genes that do not have the "Most Annotated" start:

- Basilisk_58, Brynnie_56, Chickaboom_63, Eesa_57, Gina_93, Jayden_88, Ruchi_57, Teamocil_93, Vulpecula_57,

Summary by start number:

Start 7:

- Found in 3 of 21 (14.3%) of genes in pham
- Manual Annotations of this start: 3 of 17
- Called 100.0% of time when present
- Phage (with cluster) where this start called: Gina_93 (EC), Jayden_88 (EC), Teamocil_93 (EC),

Start 9:

- Found in 5 of 21 (23.8%) of genes in pham
- Manual Annotations of this start: 4 of 17
- Called 100.0% of time when present
- Phage (with cluster) where this start called: Basilisk_58 (AS1), Brynnie_56 (AS1), Chickaboom_63 (AS1), Eesa_57 (AS1), Ruchi_57 (AS1),

Start 10:

- Found in 1 of 21 (4.8%) of genes in pham
- Manual Annotations of this start: 1 of 17
- Called 100.0% of time when present
- Phage (with cluster) where this start called: Vulpecula_57 (AS1),

Start 11:

- Found in 12 of 21 (57.1%) of genes in pham
- Manual Annotations of this start: 9 of 17
- Called 100.0% of time when present
- Phage (with cluster) where this start called: Abidatro_59 (AS1), Andrew_61 (AS3), Galaxy_56 (AS1), Jamun_56 (AS1), Juno112_58 (AS3), KHumphrey_57 (AS3), Kuleana_61 (AS2), Leona_57 (AS3), Melons_60 (AS2), PhluffyCoco_58 (AS3), RedFox_58 (AS3), Renn12_58 (AS3),

Summary by clusters:

There are 4 clusters represented in this pham: AS3, AS2, AS1, EC,

Info for manual annotations of cluster AS1:

- Start number 9 was manually annotated 4 times for cluster AS1.
- Start number 10 was manually annotated 1 time for cluster AS1.
- Start number 11 was manually annotated 3 times for cluster AS1.

Info for manual annotations of cluster AS2:

- Start number 11 was manually annotated 2 times for cluster AS2.

Info for manual annotations of cluster AS3:

- Start number 11 was manually annotated 4 times for cluster AS3.

Info for manual annotations of cluster EC:

- Start number 7 was manually annotated 3 times for cluster EC.

Gene Information:

Gene: Abidatro_59 Start: 36616, Stop: 36984, Start Num: 11

Candidate Starts for Abidatro_59:

(Start: 11 @36616 has 9 MA's), (12, 36625), (13, 36628), (20, 36682), (23, 36709), (24, 36712), (39, 36976),

Gene: Andrew_61 Start: 35776, Stop: 36129, Start Num: 11

Candidate Starts for Andrew_61:

(Start: 11 @35776 has 9 MA's), (23, 35869), (28, 35944), (31, 35998), (33, 36034), (34, 36058), (35, 36067), (38, 36109),

Gene: Basilisk_58 Start: 35995, Stop: 36351, Start Num: 9

Candidate Starts for Basilisk_58:

(2, 35863), (4, 35911), (5, 35917), (6, 35932), (8, 35986), (Start: 9 @35995 has 4 MA's), (12, 36007), (13, 36010), (23, 36085), (24, 36088), (26, 36127), (38, 36328),

Gene: Brynnie_56 Start: 35747, Stop: 36109, Start Num: 9

Candidate Starts for Brynnie_56:

(Start: 9 @35747 has 4 MA's), (12, 35759), (13, 35762), (20, 35816), (23, 35843), (24, 35846), (38, 36086),

Gene: Chickaboom_63 Start: 36331, Stop: 36687, Start Num: 9

Candidate Starts for Chickaboom_63:

(2, 36199), (4, 36247), (5, 36253), (6, 36268), (8, 36322), (Start: 9 @36331 has 4 MA's), (12, 36343), (13, 36346), (23, 36421), (24, 36424), (26, 36463), (38, 36664),

Gene: Eesa_57 Start: 36964, Stop: 37323, Start Num: 9

Candidate Starts for Eesa_57:

(1, 36763), (Start: 9 @36964 has 4 MA's), (13, 36979), (14, 36994), (20, 37033), (23, 37057), (29, 37147), (30, 37171), (34, 37249),

Gene: Galaxy_56 Start: 35033, Stop: 35383, Start Num: 11

Candidate Starts for Galaxy_56:

(Start: 11 @35033 has 9 MA's), (12, 35042), (16, 35072), (17, 35078), (19, 35084), (23, 35108), (24, 35111), (25, 35141), (29, 35198), (34, 35300), (39, 35375),

Gene: Gina_93 Start: 52064, Stop: 52447, Start Num: 7

Candidate Starts for Gina_93:

(Start: 7 @52064 has 3 MA's), (20, 52163), (23, 52190), (28, 52268), (32, 52322), (34, 52376),

Gene: Jamun_56 Start: 36265, Stop: 36624, Start Num: 11

Candidate Starts for Jamun_56:

(Start: 11 @36265 has 9 MA's), (20, 36331), (23, 36358), (24, 36361), (38, 36601),

Gene: Jayden_88 Start: 51672, Stop: 52055, Start Num: 7

Candidate Starts for Jayden_88:

(Start: 7 @51672 has 3 MA's), (20, 51771), (23, 51798), (28, 51876), (32, 51930), (34, 51984),

Gene: Juno112_58 Start: 35262, Stop: 35603, Start Num: 11

Candidate Starts for Juno112_58:

(Start: 11 @35262 has 9 MA's), (14, 35289), (15, 35295), (21, 35337), (23, 35346), (31, 35475), (33, 35511), (34, 35535), (36, 35547), (38, 35586),

Gene: KHumphrey_57 Start: 35150, Stop: 35491, Start Num: 11

Candidate Starts for KHumphrey_57:

(Start: 11 @35150 has 9 MA's), (14, 35177), (15, 35183), (21, 35225), (23, 35234), (31, 35363), (33, 35399), (34, 35423), (36, 35435), (38, 35474),

Gene: Kuleana_61 Start: 35255, Stop: 35614, Start Num: 11

Candidate Starts for Kuleana_61:

(Start: 11 @35255 has 9 MA's), (13, 35267), (23, 35348), (28, 35426),

Gene: Leona_57 Start: 35345, Stop: 35695, Start Num: 11

Candidate Starts for Leona_57:

(Start: 11 @35345 has 9 MA's), (22, 35432), (23, 35438), (31, 35567), (33, 35603),

Gene: Melons_60 Start: 34532, Stop: 34891, Start Num: 11

Candidate Starts for Melons_60:

(Start: 11 @34532 has 9 MA's), (12, 34541), (23, 34625), (26, 34667), (28, 34703), (30, 34739), (32, 34763), (33, 34793), (34, 34817), (37, 34865),

Gene: PhluffyCoco_58 Start: 35361, Stop: 35702, Start Num: 11

Candidate Starts for PhluffyCoco_58:

(Start: 11 @35361 has 9 MA's), (14, 35388), (15, 35394), (21, 35436), (23, 35445), (31, 35574), (33, 35610), (34, 35634), (36, 35646), (38, 35685),

Gene: RedFox_58 Start: 35359, Stop: 35700, Start Num: 11

Candidate Starts for RedFox_58:

(Start: 11 @35359 has 9 MA's), (14, 35386), (15, 35392), (23, 35443), (31, 35572), (33, 35608), (34, 35632), (36, 35644), (38, 35683),

Gene: Renna12_58 Start: 35475, Stop: 35813, Start Num: 11

Candidate Starts for Renna12_58:

(Start: 11 @35475 has 9 MA's), (18, 35517), (23, 35550), (27, 35613), (28, 35631),

Gene: Ruchi_57 Start: 35917, Stop: 36273, Start Num: 9

Candidate Starts for Ruchi_57:

(2, 35785), (4, 35833), (5, 35839), (6, 35854), (8, 35908), (Start: 9 @35917 has 4 MA's), (12, 35929), (13, 35932), (23, 36007), (24, 36010), (26, 36049), (38, 36250),

Gene: Teamocil_93 Start: 52157, Stop: 52540, Start Num: 7

Candidate Starts for Teamocil_93:

(Start: 7 @52157 has 3 MA's), (20, 52256), (23, 52283), (28, 52361), (32, 52415), (34, 52469),

Gene: Vulpecula_57 Start: 35583, Stop: 35945, Start Num: 10

Candidate Starts for Vulpecula_57:

(2, 35445), (3, 35478), (Start: 10 @35583 has 1 MA's), (12, 35595), (13, 35598), (20, 35652), (23, 35679), (24, 35682), (38, 35922),