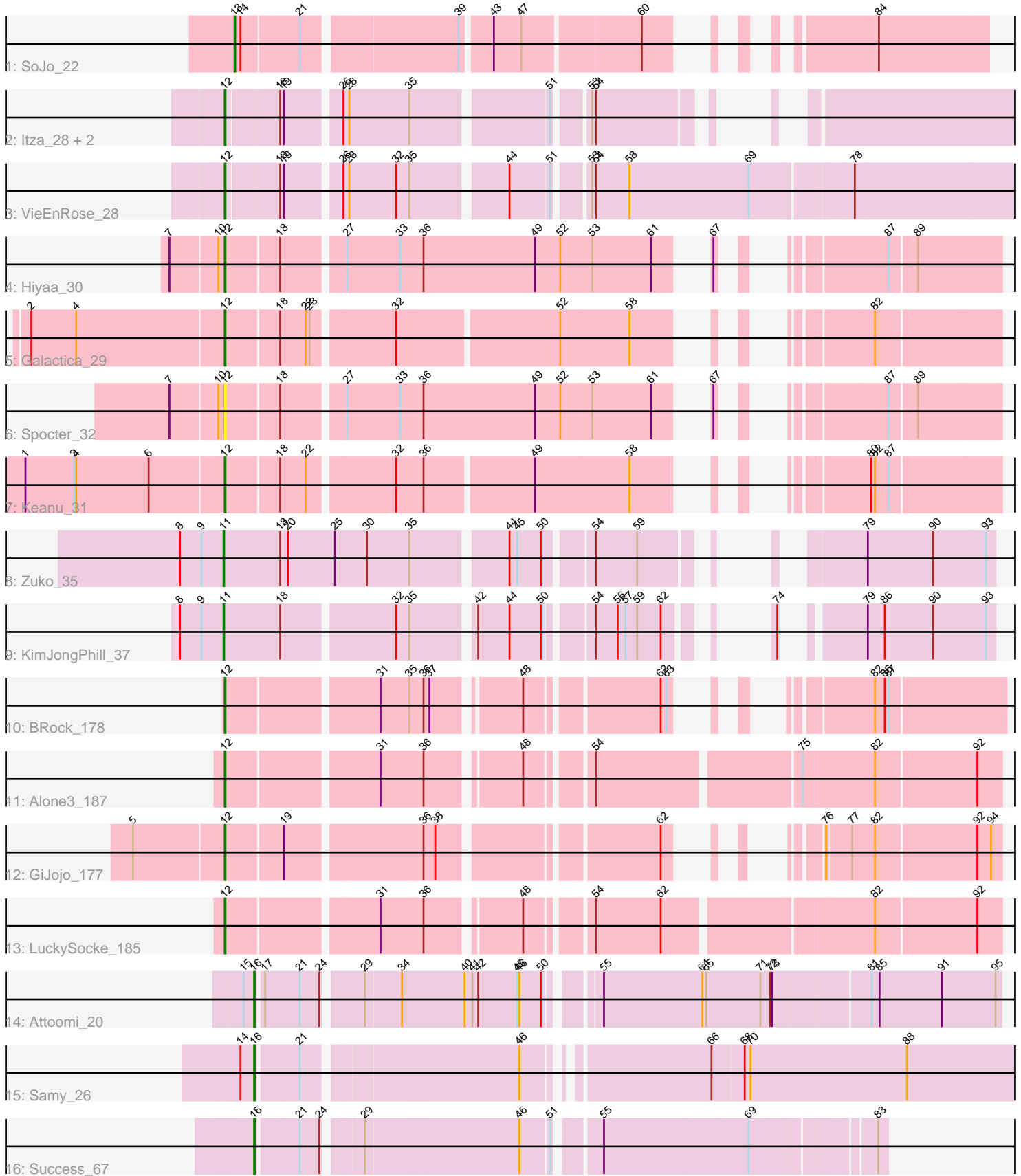


Pham 171806



Note: Tracks are now grouped by subcluster and scaled. Switching in subcluster is indicated by changes in track color. Track scale is now set by default to display the region 30 bp upstream of start 1 to 30 bp downstream of the last possible start. If this default region is judged to be packed too tightly with annotated starts, the track will be further scaled to only show that region of the ORF with annotated starts. This action will be indicated by adding "Zoomed" to the title. For starts, yellow indicates the location of called starts comprised solely of Glimmer/GeneMark auto-annotations, green indicates the location of called starts with at least 1 manual gene annotation.

Pham 171806 Report

This analysis was run 07/10/24 on database version 566.

WARNING: Pham size does not match number of genes in report. Either unphamerated genes have been added (by you) or starterator has removed genes due to invalid start codon.

Pham number 171806 has 18 members, 1 are drafts.

Phages represented in each track:

- Track 1 : SoJo_22
- Track 2 : Itza_28, Urza_28, Celia_28
- Track 3 : VieEnRose_28
- Track 4 : Hiyaa_30
- Track 5 : Galactica_29
- Track 6 : Spocter_32
- Track 7 : Keanu_31
- Track 8 : Zuko_35
- Track 9 : KimJongPhill_37
- Track 10 : BRock_178
- Track 11 : Alone3_187
- Track 12 : GiJojo_177
- Track 13 : LuckySocke_185
- Track 14 : Attoomi_20
- Track 15 : Samy_26
- Track 16 : Success_67

Summary of Final Annotations (See graph section above for start numbers):

The start number called the most often in the published annotations is 12, it was called in 11 of the 17 non-draft genes in the pham.

Genes that call this "Most Annotated" start:

- Alone3_187, BRock_178, Celia_28, Galactica_29, GiJojo_177, Hiyaa_30, Itza_28, Keanu_31, LuckySocke_185, Spocter_32, Urza_28, VieEnRose_28,

Genes that have the "Most Annotated" start but do not call it:

-

Genes that do not have the "Most Annotated" start:

- Attoomi_20, KimJongPhill_37, Samy_26, SoJo_22, Success_67, Zuko_35,

Summary by start number:

Start 11:

- Found in 2 of 18 (11.1%) of genes in pham
- Manual Annotations of this start: 2 of 17
- Called 100.0% of time when present
- Phage (with cluster) where this start called: KimJongPhill_37 (BR), Zuko_35 (BR),

Start 12:

- Found in 12 of 18 (66.7%) of genes in pham
- Manual Annotations of this start: 11 of 17
- Called 100.0% of time when present
- Phage (with cluster) where this start called: Alone3_187 (BS), BRock_178 (BS), Celia_28 (BD6), Galactica_29 (BQ), GiJojo_177 (BS), Hiyaa_30 (BQ), Itza_28 (BD6), Keanu_31 (BQ), LuckySocke_185 (BS), Spocter_32 (BQ), Urza_28 (BD6), VieEnRose_28 (BD6),

Start 13:

- Found in 1 of 18 (5.6%) of genes in pham
- Manual Annotations of this start: 1 of 17
- Called 100.0% of time when present
- Phage (with cluster) where this start called: SoJo_22 (BC1),

Start 16:

- Found in 3 of 18 (16.7%) of genes in pham
- Manual Annotations of this start: 3 of 17
- Called 100.0% of time when present
- Phage (with cluster) where this start called: Attoomi_20 (singleton), Samy_26 (singleton), Success_67 (singleton),

Summary by clusters:

There are 6 clusters represented in this pham: singleton, BD6, BQ, BR, BS, BC1,

Info for manual annotations of cluster BC1:

- Start number 13 was manually annotated 1 time for cluster BC1.

Info for manual annotations of cluster BD6:

- Start number 12 was manually annotated 4 times for cluster BD6.

Info for manual annotations of cluster BQ:

- Start number 12 was manually annotated 3 times for cluster BQ.

Info for manual annotations of cluster BR:

- Start number 11 was manually annotated 2 times for cluster BR.

Info for manual annotations of cluster BS:

- Start number 12 was manually annotated 4 times for cluster BS.

Gene Information:

Gene: Alone3_187 Start: 95865, Stop: 96938, Start Num: 12

Candidate Starts for Alone3_187:

(Start: 12 @95865 has 11 MA's), (31, 96081), (36, 96144), (48, 96273), (54, 96357), (75, 96648), (82, 96753), (92, 96903),

Gene: Attoomi_20 Start: 16925, Stop: 17971, Start Num: 16

Candidate Starts for Attoomi_20:

(15, 16910), (Start: 16 @16925 has 3 MA's), (17, 16934), (21, 16985), (24, 17015), (29, 17066), (34, 17120), (40, 17213), (41, 17225), (42, 17234), (45, 17294), (46, 17297), (50, 17330), (55, 17387), (64, 17537), (65, 17543), (71, 17624), (72, 17639), (73, 17642), (81, 17774), (85, 17786), (91, 17882), (95, 17963),

Gene: BRock_178 Start: 91256, Stop: 92188, Start Num: 12

Candidate Starts for BRock_178:

(Start: 12 @91256 has 11 MA's), (31, 91472), (35, 91514), (36, 91535), (37, 91544), (48, 91661), (62, 91844), (63, 91853), (82, 91994), (86, 92009), (87, 92015),

Gene: Celia_28 Start: 21987, Stop: 22973, Start Num: 12

Candidate Starts for Celia_28:

(Start: 12 @21987 has 11 MA's), (18, 22065), (19, 22071), (26, 22146), (28, 22155), (35, 22245), (51, 22437), (53, 22479), (54, 22485),

Gene: Galactica_29 Start: 23278, Stop: 24240, Start Num: 12

Candidate Starts for Galactica_29:

(2, 22987), (4, 23056), (Start: 12 @23278 has 11 MA's), (18, 23356), (22, 23395), (23, 23401), (32, 23518), (52, 23755), (58, 23860), (82, 24055),

Gene: GiJojo_177 Start: 95573, Stop: 96496, Start Num: 12

Candidate Starts for GiJojo_177:

(5, 95438), (Start: 12 @95573 has 11 MA's), (19, 95657), (36, 95852), (38, 95870), (62, 96170), (76, 96242), (77, 96278), (82, 96311), (92, 96461), (94, 96482),

Gene: Hiyaa_30 Start: 24308, Stop: 25282, Start Num: 12

Candidate Starts for Hiyaa_30:

(7, 24230), (10, 24299), (Start: 12 @24308 has 11 MA's), (18, 24386), (27, 24473), (33, 24554), (36, 24587), (49, 24758), (52, 24797), (53, 24845), (61, 24935), (67, 24971), (87, 25118), (89, 25157),

Gene: Itza_28 Start: 21901, Stop: 22887, Start Num: 12

Candidate Starts for Itza_28:

(Start: 12 @21901 has 11 MA's), (18, 21979), (19, 21985), (26, 22060), (28, 22069), (35, 22159), (51, 22351), (53, 22393), (54, 22399),

Gene: Keanu_31 Start: 24375, Stop: 25334, Start Num: 12

Candidate Starts for Keanu_31:

(1, 24078), (3, 24153), (4, 24156), (6, 24267), (Start: 12 @24375 has 11 MA's), (18, 24453), (22, 24492), (32, 24615), (36, 24654), (49, 24813), (58, 24957), (80, 25143), (82, 25149), (87, 25170),

Gene: KimJongPhill_37 Start: 33176, Stop: 32256, Start Num: 11

Candidate Starts for KimJongPhill_37:

(8, 33242), (9, 33209), (Start: 11 @33176 has 2 MA's), (18, 33089), (32, 32927), (35, 32909), (42, 32822), (44, 32774), (50, 32726), (54, 32666), (56, 32633), (57, 32621), (59, 32603), (62, 32567), (74,

32516), (79, 32441), (86, 32417), (90, 32345), (93, 32270),

Gene: LuckySocke_185 Start: 94376, Stop: 95449, Start Num: 12

Candidate Starts for LuckySocke_185:

(Start: 12 @94376 has 11 MA's), (31, 94592), (36, 94655), (48, 94784), (54, 94868), (62, 94967), (82, 95264), (92, 95414),

Gene: Samy_26 Start: 20532, Stop: 21713, Start Num: 16

Candidate Starts for Samy_26:

(14, 20511), (Start: 16 @20532 has 3 MA's), (21, 20592), (46, 20901), (66, 21147), (68, 21195), (70, 21204), (88, 21444),

Gene: SoJo_22 Start: 18310, Stop: 19248, Start Num: 13

Candidate Starts for SoJo_22:

(Start: 13 @18310 has 1 MA's), (14, 18319), (21, 18403), (39, 18625), (43, 18667), (47, 18709), (60, 18880), (84, 19081),

Gene: Spocter_32 Start: 24296, Stop: 25270, Start Num: 12

Candidate Starts for Spocter_32:

(7, 24218), (10, 24287), (Start: 12 @24296 has 11 MA's), (18, 24374), (27, 24461), (33, 24542), (36, 24575), (49, 24746), (52, 24785), (53, 24833), (61, 24923), (67, 24959), (87, 25106), (89, 25145),

Gene: Success_67 Start: 44240, Stop: 45103, Start Num: 16

Candidate Starts for Success_67:

(Start: 16 @44240 has 3 MA's), (21, 44300), (24, 44330), (29, 44378), (46, 44609), (51, 44651), (55, 44705), (69, 44924), (83, 45089),

Gene: Urza_28 Start: 21922, Stop: 22908, Start Num: 12

Candidate Starts for Urza_28:

(Start: 12 @21922 has 11 MA's), (18, 22000), (19, 22006), (26, 22081), (28, 22090), (35, 22180), (51, 22372), (53, 22414), (54, 22420),

Gene: VieEnRose_28 Start: 21828, Stop: 22976, Start Num: 12

Candidate Starts for VieEnRose_28:

(Start: 12 @21828 has 11 MA's), (18, 21906), (19, 21912), (26, 21987), (28, 21996), (32, 22068), (35, 22086), (44, 22221), (51, 22278), (53, 22320), (54, 22326), (58, 22377), (69, 22560), (78, 22707),

Gene: Zuko_35 Start: 31679, Stop: 30726, Start Num: 11

Candidate Starts for Zuko_35:

(8, 31745), (9, 31712), (Start: 11 @31679 has 2 MA's), (18, 31592), (20, 31580), (25, 31508), (30, 31460), (35, 31397), (44, 31262), (45, 31250), (50, 31214), (54, 31151), (59, 31088), (79, 30911), (90, 30815), (93, 30740),