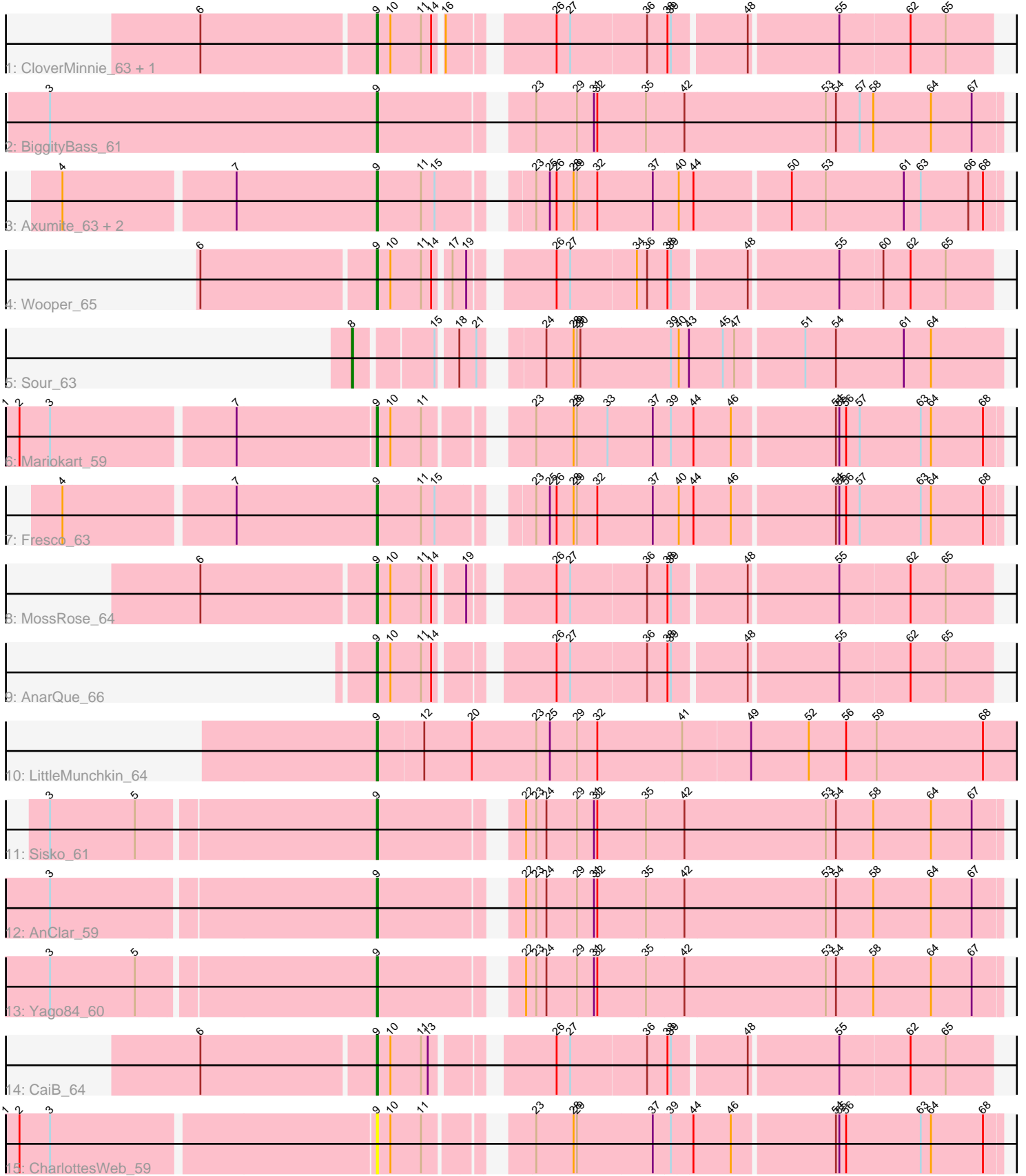


Pham 171811



Note: Tracks are now grouped by subcluster and scaled. Switching in subcluster is indicated by changes in track color. Track scale is now set by default to display the region 30 bp upstream of start 1 to 30 bp downstream of the last possible start. If this default region is judged to be packed too tightly with annotated starts, the track will be further scaled to only show that region of the ORF with annotated starts. This action will be indicated by adding "Zoomed" to the title. For starts, yellow indicates the location of called starts comprised solely of Glimmer/GeneMark auto-annotations, green indicates the location of called starts with at least 1 manual gene annotation.

Pham 171811 Report

This analysis was run 07/10/24 on database version 566.

Pham number 171811 has 18 members, 2 are drafts.

Phages represented in each track:

- Track 1 : CloverMinnie_63, MakoManhole_62
- Track 2 : BiggityBass_61
- Track 3 : Axumite_63, Ligma_63, Shatter_63
- Track 4 : Wooper_65
- Track 5 : Sour_63
- Track 6 : Mariokart_59
- Track 7 : Fresco_63
- Track 8 : MossRose_64
- Track 9 : AnarQue_66
- Track 10 : LittleMunchkin_64
- Track 11 : Sisko_61
- Track 12 : AnClar_59
- Track 13 : Yago84_60
- Track 14 : CaiB_64
- Track 15 : CharlottesWeb_59

Summary of Final Annotations (See graph section above for start numbers):

The start number called the most often in the published annotations is 9, it was called in 15 of the 16 non-draft genes in the pham.

Genes that call this "Most Annotated" start:

- AnClar_59, AnarQue_66, Axumite_63, BiggityBass_61, CaiB_64, CharlottesWeb_59, CloverMinnie_63, Fresco_63, Ligma_63, LittleMunchkin_64, MakoManhole_62, Mariokart_59, MossRose_64, Shatter_63, Sisko_61, Wooper_65, Yago84_60,

Genes that have the "Most Annotated" start but do not call it:

-

Genes that do not have the "Most Annotated" start:

- Sour_63,

Summary by start number:

Start 8:

- Found in 1 of 18 (5.6%) of genes in pham
- Manual Annotations of this start: 1 of 16
- Called 100.0% of time when present
- Phage (with cluster) where this start called: Sour_63 (DR),

Start 9:

- Found in 17 of 18 (94.4%) of genes in pham
- Manual Annotations of this start: 15 of 16
- Called 100.0% of time when present
- Phage (with cluster) where this start called: AnClar_59 (DR), AnarQue_66 (DR), Axumite_63 (DR), BiggityBass_61 (DR), CaiB_64 (DR), CharlottesWeb_59 (DR), CloverMinnie_63 (DR), Fresco_63 (DR), Ligma_63 (DR), LittleMunchkin_64 (DR), MakoManhole_62 (DR), Mariokart_59 (DR), MossRose_64 (DR), Shatter_63 (DR), Sisko_61 (DR), Wooper_65 (DR), Yago84_60 (DR),

Summary by clusters:

There is one cluster represented in this pham: DR

Info for manual annotations of cluster DR:

- Start number 8 was manually annotated 1 time for cluster DR.
- Start number 9 was manually annotated 15 times for cluster DR.

Gene Information:

Gene: AnClar_59 Start: 51973, Stop: 52494, Start Num: 9

Candidate Starts for AnClar_59:

(3, 51697), (Start: 9 @51973 has 15 MA's), (22, 52081), (23, 52090), (24, 52099), (29, 52126), (31, 52141), (32, 52144), (35, 52186), (42, 52219), (53, 52342), (54, 52351), (58, 52384), (64, 52435), (67, 52471),

Gene: AnarQue_66 Start: 52691, Stop: 53188, Start Num: 9

Candidate Starts for AnarQue_66:

(Start: 9 @52691 has 15 MA's), (10, 52703), (11, 52730), (14, 52739), (26, 52823), (27, 52835), (36, 52901), (38, 52919), (39, 52922), (48, 52982), (55, 53057), (62, 53117), (65, 53147),

Gene: Axumite_63 Start: 50823, Stop: 51332, Start Num: 9

Candidate Starts for Axumite_63:

(4, 50556), (7, 50700), (Start: 9 @50823 has 15 MA's), (11, 50862), (15, 50874), (23, 50934), (25, 50946), (26, 50952), (28, 50967), (29, 50970), (32, 50988), (37, 51036), (40, 51057), (44, 51069), (50, 51150), (53, 51180), (61, 51249), (63, 51264), (66, 51306), (68, 51318),

Gene: BiggityBass_61 Start: 52529, Stop: 53050, Start Num: 9

Candidate Starts for BiggityBass_61:

(3, 52241), (Start: 9 @52529 has 15 MA's), (23, 52646), (29, 52682), (31, 52697), (32, 52700), (35, 52742), (42, 52775), (53, 52898), (54, 52907), (57, 52928), (58, 52940), (64, 52991), (67, 53027),

Gene: CaiB_64 Start: 52475, Stop: 52972, Start Num: 9

Candidate Starts for CaiB_64:

(6, 52325), (Start: 9 @52475 has 15 MA's), (10, 52487), (11, 52514), (13, 52520), (26, 52607), (27, 52619), (36, 52685), (38, 52703), (39, 52706), (48, 52766), (55, 52841), (62, 52901), (65, 52931),

Gene: CharlottesWeb_59 Start: 49407, Stop: 49913, Start Num: 9

Candidate Starts for CharlottesWeb_59:

(1, 49092), (2, 49104), (3, 49131), (Start: 9 @49407 has 15 MA's), (10, 49419), (11, 49446), (23, 49515), (28, 49548), (29, 49551), (37, 49617), (39, 49632), (44, 49650), (46, 49683), (54, 49770), (55, 49773), (56, 49779), (63, 49845), (64, 49854), (68, 49899),

Gene: CloverMinnie_63 Start: 51638, Stop: 52135, Start Num: 9

Candidate Starts for CloverMinnie_63:

(6, 51488), (Start: 9 @51638 has 15 MA's), (10, 51650), (11, 51677), (14, 51686), (16, 51692), (26, 51770), (27, 51782), (36, 51848), (38, 51866), (39, 51869), (48, 51929), (55, 52004), (62, 52064), (65, 52094),

Gene: Fresco_63 Start: 50823, Stop: 51332, Start Num: 9

Candidate Starts for Fresco_63:

(4, 50556), (7, 50700), (Start: 9 @50823 has 15 MA's), (11, 50862), (15, 50874), (23, 50934), (25, 50946), (26, 50952), (28, 50967), (29, 50970), (32, 50988), (37, 51036), (40, 51057), (44, 51069), (46, 51102), (54, 51189), (55, 51192), (56, 51198), (57, 51210), (63, 51264), (64, 51273), (68, 51318),

Gene: Ligma_63 Start: 50823, Stop: 51332, Start Num: 9

Candidate Starts for Ligma_63:

(4, 50556), (7, 50700), (Start: 9 @50823 has 15 MA's), (11, 50862), (15, 50874), (23, 50934), (25, 50946), (26, 50952), (28, 50967), (29, 50970), (32, 50988), (37, 51036), (40, 51057), (44, 51069), (50, 51150), (53, 51180), (61, 51249), (63, 51264), (66, 51306), (68, 51318),

Gene: LittleMunchkin_64 Start: 53578, Stop: 54135, Start Num: 9

Candidate Starts for LittleMunchkin_64:

(Start: 9 @53578 has 15 MA's), (12, 53617), (20, 53659), (23, 53716), (25, 53728), (29, 53752), (32, 53770), (41, 53842), (49, 53899), (52, 53950), (56, 53983), (59, 54010), (68, 54103),

Gene: MakoManhole_62 Start: 50993, Stop: 51490, Start Num: 9

Candidate Starts for MakoManhole_62:

(6, 50843), (Start: 9 @50993 has 15 MA's), (10, 51005), (11, 51032), (14, 51041), (16, 51047), (26, 51125), (27, 51137), (36, 51203), (38, 51221), (39, 51224), (48, 51284), (55, 51359), (62, 51419), (65, 51449),

Gene: Mariokart_59 Start: 49692, Stop: 50198, Start Num: 9

Candidate Starts for Mariokart_59:

(1, 49377), (2, 49389), (3, 49416), (7, 49572), (Start: 9 @49692 has 15 MA's), (10, 49704), (11, 49731), (23, 49800), (28, 49833), (29, 49836), (33, 49863), (37, 49902), (39, 49917), (44, 49935), (46, 49968), (54, 50055), (55, 50058), (56, 50064), (57, 50076), (63, 50130), (64, 50139), (68, 50184),

Gene: MossRose_64 Start: 51953, Stop: 52450, Start Num: 9

Candidate Starts for MossRose_64:

(6, 51803), (Start: 9 @51953 has 15 MA's), (10, 51965), (11, 51992), (14, 52001), (19, 52025), (26, 52085), (27, 52097), (36, 52163), (38, 52181), (39, 52184), (48, 52244), (55, 52319), (62, 52379), (65, 52409),

Gene: Shatter_63 Start: 50823, Stop: 51332, Start Num: 9

Candidate Starts for Shatter_63:

(4, 50556), (7, 50700), (Start: 9 @50823 has 15 MA's), (11, 50862), (15, 50874), (23, 50934), (25, 50946), (26, 50952), (28, 50967), (29, 50970), (32, 50988), (37, 51036), (40, 51057), (44, 51069), (50, 51150), (53, 51180), (61, 51249), (63, 51264), (66, 51306), (68, 51318),

Gene: Sisko_61 Start: 51041, Stop: 51562, Start Num: 9

Candidate Starts for Sisko_61:

(3, 50765), (5, 50840), (Start: 9 @51041 has 15 MA's), (22, 51149), (23, 51158), (24, 51167), (29, 51194), (31, 51209), (32, 51212), (35, 51254), (42, 51287), (53, 51410), (54, 51419), (58, 51452), (64, 51503), (67, 51539),

Gene: Sour_63 Start: 53270, Stop: 53794, Start Num: 8

Candidate Starts for Sour_63:

(Start: 8 @53270 has 1 MA's), (15, 53333), (18, 53348), (21, 53363), (24, 53402), (28, 53426), (29, 53429), (30, 53432), (39, 53510), (40, 53516), (43, 53525), (45, 53555), (47, 53564), (51, 53621), (54, 53648), (61, 53708), (64, 53732),

Gene: Wooper_65 Start: 52024, Stop: 52521, Start Num: 9

Candidate Starts for Wooper_65:

(6, 51874), (Start: 9 @52024 has 15 MA's), (10, 52036), (11, 52063), (14, 52072), (17, 52084), (19, 52096), (26, 52156), (27, 52168), (34, 52225), (36, 52234), (38, 52252), (39, 52255), (48, 52315), (55, 52390), (60, 52426), (62, 52450), (65, 52480),

Gene: Yago84_60 Start: 50526, Stop: 51047, Start Num: 9

Candidate Starts for Yago84_60:

(3, 50250), (5, 50325), (Start: 9 @50526 has 15 MA's), (22, 50634), (23, 50643), (24, 50652), (29, 50679), (31, 50694), (32, 50697), (35, 50739), (42, 50772), (53, 50895), (54, 50904), (58, 50937), (64, 50988), (67, 51024),