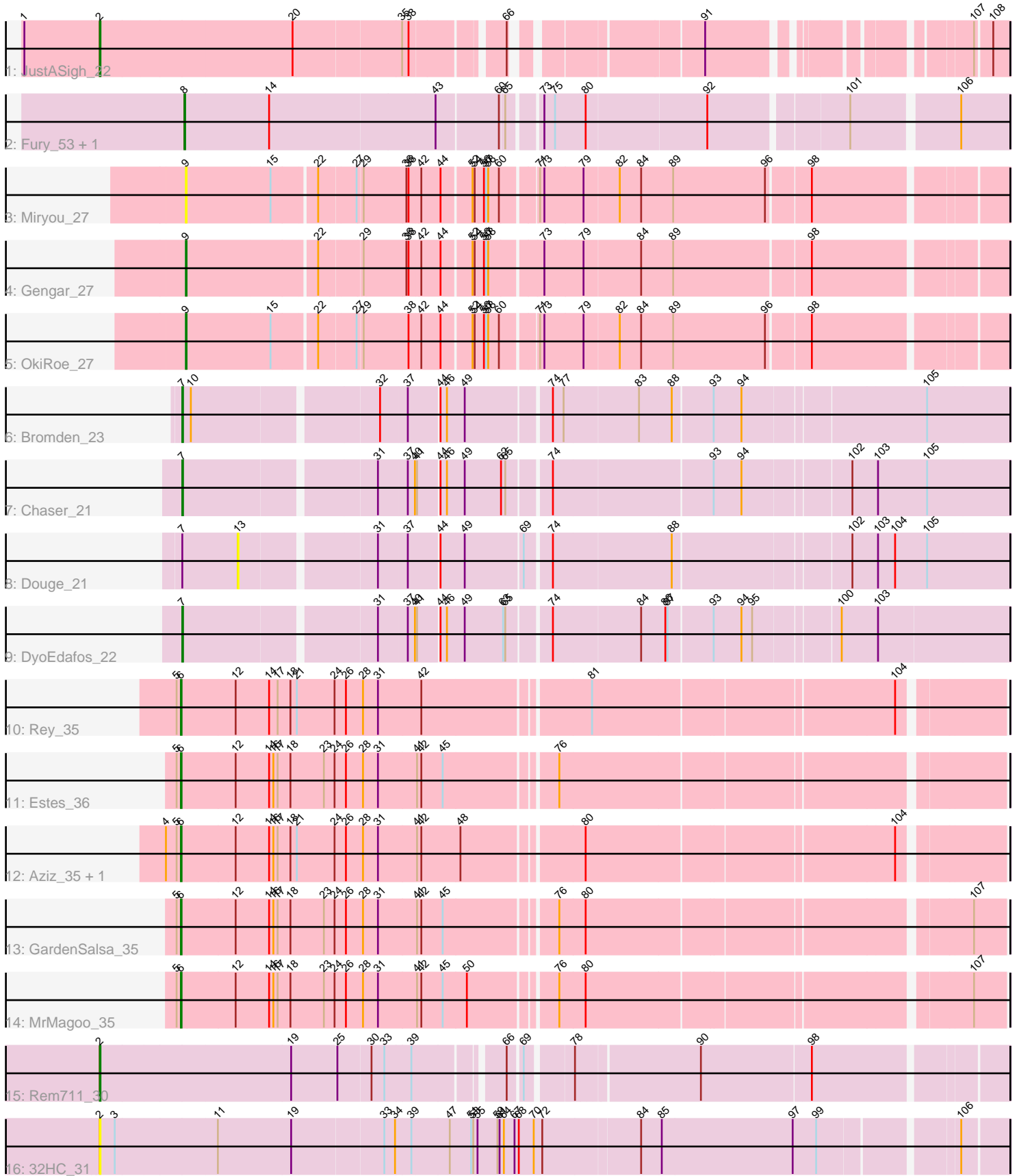


Pham 171814



Note: Tracks are now grouped by subcluster and scaled. Switching in subcluster is indicated by changes in track color. Track scale is now set by default to display the region 30 bp upstream of start 1 to 30 bp downstream of the last possible start. If this default region is judged to be packed too tightly with annotated starts, the track will be further scaled to only show that region of the ORF with annotated starts. This action will be indicated by adding "Zoomed" to the title. For starts, yellow indicates the location of called starts comprised solely of Glimmer/GeneMark auto-annotations, green indicates the location of called starts with at least 1 manual gene annotation.

Pham 171814 Report

This analysis was run 07/10/24 on database version 566.

Pham number 171814 has 18 members, 3 are drafts.

Phages represented in each track:

- Track 1 : JustASigh_22
- Track 2 : Fury_53, Pleakley_53
- Track 3 : Miryou_27
- Track 4 : Gengar_27
- Track 5 : OkiRoe_27
- Track 6 : Bromden_23
- Track 7 : Chaser_21
- Track 8 : Douge_21
- Track 9 : DyoEdafos_22
- Track 10 : Rey_35
- Track 11 : Estes_36
- Track 12 : Aziz_35, GenevaB15_35
- Track 13 : GardenSalsa_35
- Track 14 : MrMagoo_35
- Track 15 : Rem711_30
- Track 16 : 32HC_31

Summary of Final Annotations (See graph section above for start numbers):

The start number called the most often in the published annotations is 6, it was called in 6 of the 15 non-draft genes in the pham.

Genes that call this "Most Annotated" start:

- Aziz_35, Estes_36, GardenSalsa_35, GenevaB15_35, MrMagoo_35, Rey_35,

Genes that have the "Most Annotated" start but do not call it:

-

Genes that do not have the "Most Annotated" start:

- 32HC_31, Bromden_23, Chaser_21, Douge_21, DyoEdafos_22, Fury_53, Gengar_27, JustASigh_22, Miryou_27, OkiRoe_27, Pleakley_53, Rem711_30,

Summary by start number:

Start 2:

- Found in 3 of 18 (16.7%) of genes in pham
- Manual Annotations of this start: 2 of 15
- Called 100.0% of time when present
- Phage (with cluster) where this start called: 32HC_31 (Z), JustASigh_22 (AH), Rem711_30 (Z),

Start 6:

- Found in 6 of 18 (33.3%) of genes in pham
- Manual Annotations of this start: 6 of 15
- Called 100.0% of time when present
- Phage (with cluster) where this start called: Aziz_35 (M2), Estes_36 (M2), GardenSalsa_35 (M2), GenevaB15_35 (M2), MrMagoo_35 (M2), Rey_35 (M2),

Start 7:

- Found in 4 of 18 (22.2%) of genes in pham
- Manual Annotations of this start: 3 of 15
- Called 75.0% of time when present
- Phage (with cluster) where this start called: Bromden_23 (L4), Chaser_21 (L4), DyoEdafos_22 (L4),

Start 8:

- Found in 2 of 18 (11.1%) of genes in pham
- Manual Annotations of this start: 2 of 15
- Called 100.0% of time when present
- Phage (with cluster) where this start called: Fury_53 (CR5), Pleakley_53 (CR5),

Start 9:

- Found in 3 of 18 (16.7%) of genes in pham
- Manual Annotations of this start: 2 of 15
- Called 100.0% of time when present
- Phage (with cluster) where this start called: Gengar_27 (K5), Miryou_27 (K5), OkiRoe_27 (K5),

Start 13:

- Found in 1 of 18 (5.6%) of genes in pham
- No Manual Annotations of this start.
- Called 100.0% of time when present
- Phage (with cluster) where this start called: Douge_21 (L4),

Summary by clusters:

There are 6 clusters represented in this pham: CR5, AH, L4, K5, M2, Z,

Info for manual annotations of cluster AH:

- Start number 2 was manually annotated 1 time for cluster AH.

Info for manual annotations of cluster CR5:

- Start number 8 was manually annotated 2 times for cluster CR5.

Info for manual annotations of cluster K5:

- Start number 9 was manually annotated 2 times for cluster K5.

Info for manual annotations of cluster L4:

- Start number 7 was manually annotated 3 times for cluster L4.

Info for manual annotations of cluster M2:

- Start number 6 was manually annotated 6 times for cluster M2.

Info for manual annotations of cluster Z:

- Start number 2 was manually annotated 1 time for cluster Z.

Gene Information:

Gene: 32HC_31 Start: 25140, Stop: 26351, Start Num: 2

Candidate Starts for 32HC_31:

(Start: 2 @25140 has 2 MA's), (3, 25161), (11, 25299), (19, 25401), (33, 25524), (34, 25539), (39, 25560), (47, 25611), (51, 25641), (53, 25644), (55, 25650), (59, 25677), (61, 25680), (64, 25686), (67, 25701), (68, 25707), (70, 25728), (72, 25740), (84, 25872), (85, 25899), (97, 26082), (99, 26115), (106, 26289),

Gene: Aziz_35 Start: 27886, Stop: 28968, Start Num: 6

Candidate Starts for Aziz_35:

(4, 27865), (5, 27880), (Start: 6 @27886 has 6 MA's), (12, 27961), (14, 28006), (16, 28012), (17, 28018), (18, 28036), (21, 28045), (24, 28096), (26, 28111), (28, 28135), (31, 28156), (41, 28210), (42, 28216), (48, 28270), (80, 28426), (104, 28837),

Gene: Bromden_23 Start: 22120, Stop: 23205, Start Num: 7

Candidate Starts for Bromden_23:

(Start: 7 @22120 has 3 MA's), (10, 22132), (32, 22375), (37, 22411), (44, 22450), (46, 22459), (49, 22483), (74, 22594), (77, 22609), (83, 22711), (88, 22756), (93, 22810), (94, 22849), (105, 23092),

Gene: Chaser_21 Start: 21531, Stop: 22616, Start Num: 7

Candidate Starts for Chaser_21:

(Start: 7 @21531 has 3 MA's), (31, 21783), (37, 21822), (40, 21831), (41, 21834), (44, 21861), (46, 21870), (49, 21894), (62, 21945), (65, 21951), (74, 22005), (93, 22221), (94, 22260), (102, 22401), (103, 22434), (105, 22503),

Gene: Douge_21 Start: 21547, Stop: 22554, Start Num: 13

Candidate Starts for Douge_21:

(Start: 7 @21469 has 3 MA's), (13, 21547), (31, 21721), (37, 21760), (44, 21799), (49, 21832), (69, 21910), (74, 21943), (88, 22105), (102, 22339), (103, 22372), (104, 22396), (105, 22441),

Gene: DyoEdafos_22 Start: 21679, Stop: 22761, Start Num: 7

Candidate Starts for DyoEdafos_22:

(Start: 7 @21679 has 3 MA's), (31, 21931), (37, 21970), (40, 21979), (41, 21982), (44, 22009), (46, 22018), (49, 22042), (63, 22096), (65, 22099), (74, 22153), (84, 22273), (86, 22306), (87, 22309), (93, 22369), (94, 22408), (95, 22423), (100, 22534), (103, 22582),

Gene: Estes_36 Start: 28017, Stop: 29099, Start Num: 6

Candidate Starts for Estes_36:

(5, 28011), (Start: 6 @28017 has 6 MA's), (12, 28092), (14, 28137), (16, 28143), (17, 28149), (18, 28167), (23, 28212), (24, 28227), (26, 28242), (28, 28266), (31, 28287), (41, 28341), (42, 28347), (45, 28377), (76, 28521),

Gene: Fury_53 Start: 35397, Stop: 36479, Start Num: 8

Candidate Starts for Fury_53:

(Start: 8 @35397 has 2 MA's), (14, 35514), (43, 35742), (60, 35826), (65, 35832), (73, 35871), (75, 35886), (80, 35928), (92, 36093), (101, 36273), (106, 36411),

Gene: GardenSalsa_35 Start: 27841, Stop: 28923, Start Num: 6

Candidate Starts for GardenSalsa_35:

(5, 27835), (Start: 6 @27841 has 6 MA's), (12, 27916), (14, 27961), (16, 27967), (17, 27973), (18, 27991), (23, 28036), (24, 28051), (26, 28066), (28, 28090), (31, 28111), (41, 28165), (42, 28171), (45, 28201), (76, 28345), (80, 28381), (107, 28879),

Gene: GenevaB15_35 Start: 27886, Stop: 28968, Start Num: 6

Candidate Starts for GenevaB15_35:

(4, 27865), (5, 27880), (Start: 6 @27886 has 6 MA's), (12, 27961), (14, 28006), (16, 28012), (17, 28018), (18, 28036), (21, 28045), (24, 28096), (26, 28111), (28, 28135), (31, 28156), (41, 28210), (42, 28216), (48, 28270), (80, 28426), (104, 28837),

Gene: Gengar_27 Start: 23958, Stop: 25028, Start Num: 9

Candidate Starts for Gengar_27:

(Start: 9 @23958 has 2 MA's), (22, 24132), (29, 24186), (36, 24243), (38, 24246), (42, 24261), (44, 24288), (52, 24327), (54, 24330), (56, 24342), (57, 24345), (58, 24348), (73, 24417), (79, 24471), (84, 24549), (89, 24594), (98, 24777),

Gene: JustASigh_22 Start: 22794, Stop: 23885, Start Num: 2

Candidate Starts for JustASigh_22:

(1, 22689), (Start: 2 @22794 has 2 MA's), (20, 23058), (35, 23202), (38, 23211), (66, 23322), (91, 23547), (107, 23841), (108, 23862),

Gene: Miryou_27 Start: 23918, Stop: 24985, Start Num: 9

Candidate Starts for Miryou_27:

(Start: 9 @23918 has 2 MA's), (15, 24035), (22, 24092), (27, 24140), (29, 24146), (36, 24203), (38, 24206), (42, 24221), (44, 24248), (52, 24287), (54, 24290), (56, 24302), (57, 24305), (58, 24308), (60, 24323), (71, 24368), (73, 24374), (79, 24428), (82, 24476), (84, 24506), (89, 24551), (96, 24680), (98, 24734),

Gene: MrMagoo_35 Start: 27841, Stop: 28923, Start Num: 6

Candidate Starts for MrMagoo_35:

(5, 27835), (Start: 6 @27841 has 6 MA's), (12, 27916), (14, 27961), (16, 27967), (17, 27973), (18, 27991), (23, 28036), (24, 28051), (26, 28066), (28, 28090), (31, 28111), (41, 28165), (42, 28171), (45, 28201), (50, 28234), (76, 28345), (80, 28381), (107, 28879),

Gene: OkiRoe_27 Start: 23934, Stop: 25001, Start Num: 9

Candidate Starts for OkiRoe_27:

(Start: 9 @23934 has 2 MA's), (15, 24051), (22, 24108), (27, 24156), (29, 24162), (38, 24222), (42, 24237), (44, 24264), (52, 24303), (54, 24306), (56, 24318), (57, 24321), (58, 24324), (60, 24339), (71, 24384), (73, 24390), (79, 24444), (82, 24492), (84, 24522), (89, 24567), (96, 24696), (98, 24750),

Gene: Pleakley_53 Start: 35398, Stop: 36480, Start Num: 8

Candidate Starts for Pleakley_53:

(Start: 8 @35398 has 2 MA's), (14, 35515), (43, 35743), (60, 35827), (65, 35833), (73, 35872), (75, 35887), (80, 35929), (92, 36094), (101, 36274), (106, 36412),

Gene: Rem711_30 Start: 25189, Stop: 26352, Start Num: 2

Candidate Starts for Rem711_30:

(Start: 2 @25189 has 2 MA's), (19, 25450), (25, 25510), (30, 25555), (33, 25573), (39, 25609), (66, 25717), (69, 25732), (78, 25789), (90, 25951), (98, 26101),

Gene: Rey_35 Start: 28073, Stop: 29155, Start Num: 6

Candidate Starts for Rey_35:

(5, 28067), (Start: 6 @28073 has 6 MA's), (12, 28148), (14, 28193), (17, 28205), (18, 28223), (21, 28232), (24, 28283), (26, 28298), (28, 28322), (31, 28343), (42, 28403), (81, 28622), (104, 29024),