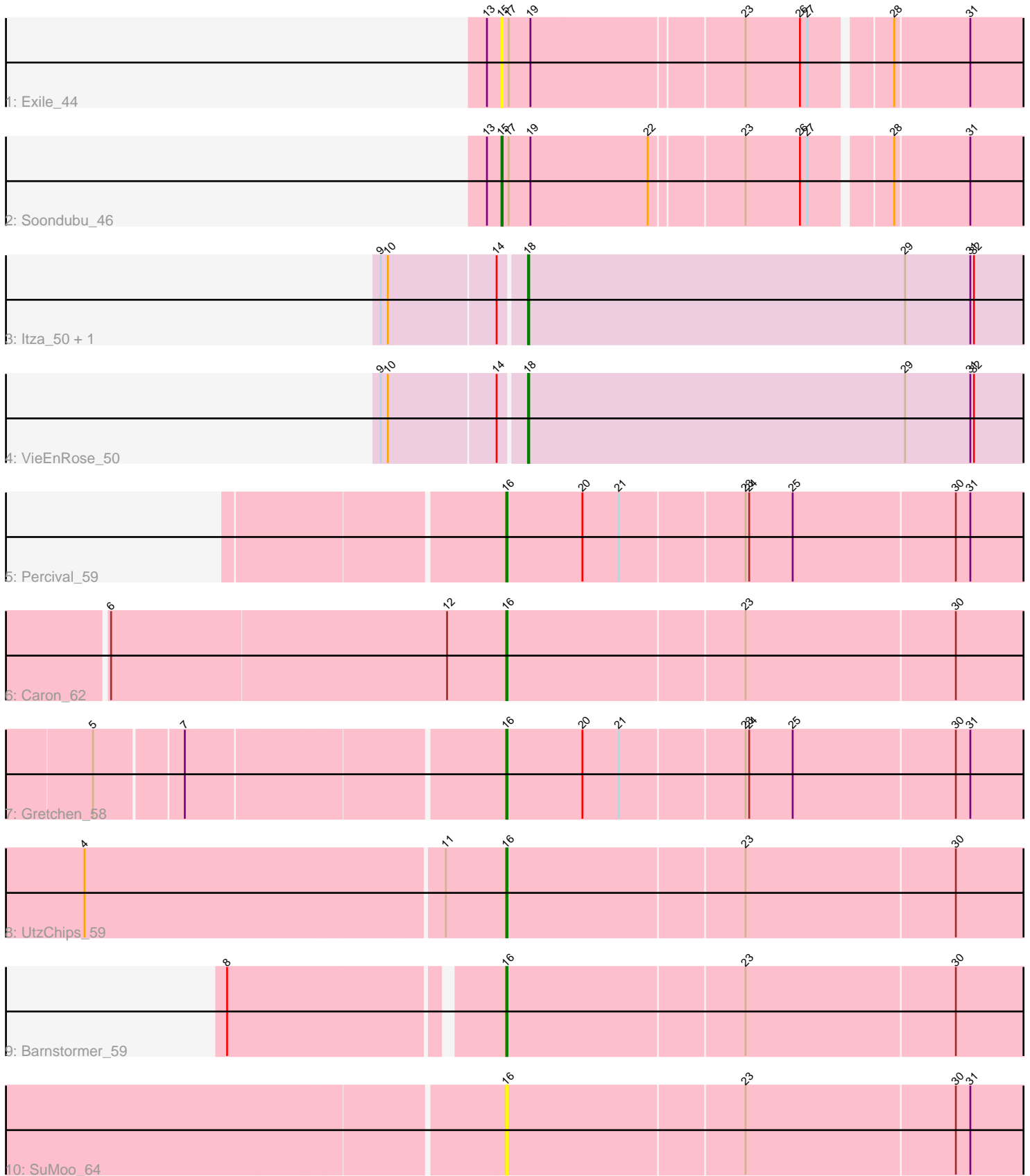


Zoomed Pham 171943



Note: Tracks are now grouped by subcluster and scaled. Switching in subcluster is indicated by changes in track color. Track scale is now set by default to display the region 30 bp upstream of start 1 to 30 bp downstream of the last possible start. If this default region is judged to be packed too tightly with annotated starts, the track will be further scaled to only show that region of the ORF with annotated starts. This action will be indicated by adding "Zoomed" to the title. For starts, yellow indicates the location of called starts comprised solely of Glimmer/GeneMark auto-annotations, green indicates the location of called starts with at least 1 manual gene annotation.

Pham 171943 Report

This analysis was run 07/10/24 on database version 566.

Pham number 171943 has 11 members, 2 are drafts.

Phages represented in each track:

- Track 1 : Exile_44
- Track 2 : Soondubu_46
- Track 3 : Itza_50, Urza_50
- Track 4 : VieEnRose_50
- Track 5 : Percival_59
- Track 6 : Caron_62
- Track 7 : Gretchen_58
- Track 8 : UtzChips_59
- Track 9 : Barnstormer_59
- Track 10 : SuMoo_64

Summary of Final Annotations (See graph section above for start numbers):

The start number called the most often in the published annotations is 16, it was called in 5 of the 9 non-draft genes in the pham.

Genes that call this "Most Annotated" start:

- Barnstormer_59, Caron_62, Gretchen_58, Percival_59, SuMoo_64, UtzChips_59,

Genes that have the "Most Annotated" start but do not call it:

-

Genes that do not have the "Most Annotated" start:

- Exile_44, Itza_50, Soondubu_46, Urza_50, VieEnRose_50,

Summary by start number:

Start 15:

- Found in 2 of 11 (18.2%) of genes in pham
- Manual Annotations of this start: 1 of 9
- Called 100.0% of time when present
- Phage (with cluster) where this start called: Exile_44 (AZ), Soondubu_46 (AZ),

Start 16:

- Found in 6 of 11 (54.5%) of genes in pham
- Manual Annotations of this start: 5 of 9
- Called 100.0% of time when present
- Phage (with cluster) where this start called: Barnstormer_59 (EH), Caron_62 (EH), Gretchen_58 (EH), Percival_59 (EH), SuMoo_64 (EH), UtzChips_59 (EH),

Start 18:

- Found in 3 of 11 (27.3%) of genes in pham
- Manual Annotations of this start: 3 of 9
- Called 100.0% of time when present
- Phage (with cluster) where this start called: Itza_50 (BD6), Urza_50 (BD6), VieEnRose_50 (BD6),

Summary by clusters:

There are 3 clusters represented in this pham: BD6, EH, AZ,

Info for manual annotations of cluster AZ:

- Start number 15 was manually annotated 1 time for cluster AZ.

Info for manual annotations of cluster BD6:

- Start number 18 was manually annotated 3 times for cluster BD6.

Info for manual annotations of cluster EH:

- Start number 16 was manually annotated 5 times for cluster EH.

Gene Information:

Gene: Barnstormer_59 Start: 38306, Stop: 39811, Start Num: 16

Candidate Starts for Barnstormer_59:

(8, 38096), (Start: 16 @38306 has 5 MA's), (23, 38498), (30, 38669), (39, 38861), (41, 38915), (45, 38963), (49, 39065), (62, 39302), (69, 39452), (74, 39551), (89, 39806),

Gene: Caron_62 Start: 38824, Stop: 40329, Start Num: 16

Candidate Starts for Caron_62:

(1, 38068), (2, 38149), (3, 38335), (6, 38500), (12, 38776), (Start: 16 @38824 has 5 MA's), (23, 39016), (30, 39187), (41, 39433), (43, 39466), (45, 39481), (49, 39583), (57, 39715), (62, 39820), (89, 40324),

Gene: Exile_44 Start: 37249, Stop: 38688, Start Num: 15

Candidate Starts for Exile_44:

(13, 37237), (Start: 15 @37249 has 1 MA's), (17, 37255), (19, 37273), (23, 37441), (26, 37486), (27, 37492), (28, 37552), (31, 37612), (38, 37780), (47, 37939), (56, 38107), (61, 38161), (65, 38254), (69, 38341), (77, 38464), (78, 38476), (79, 38482), (80, 38500), (84, 38560), (87, 38620),

Gene: Gretchen_58 Start: 38919, Stop: 40406, Start Num: 16

Candidate Starts for Gretchen_58:

(5, 38601), (7, 38670), (Start: 16 @38919 has 5 MA's), (20, 38982), (21, 39012), (23, 39111), (24, 39114), (25, 39150), (30, 39282), (31, 39294), (35, 39366), (36, 39423), (37, 39450), (41, 39528), (45, 39576), (51, 39753), (53, 39765), (60, 39885), (62, 39918), (64, 39978), (67, 40020), (68, 40032), (73, 40158), (75, 40173), (82, 40251), (83, 40269), (88, 40401),

Gene: Itza_50 Start: 33245, Stop: 34663, Start Num: 18

Candidate Starts for Itza_50:

(9, 33131), (10, 33137), (14, 33224), (Start: 18 @33245 has 3 MA's), (29, 33557), (31, 33611), (32, 33614), (33, 33659), (34, 33674), (36, 33740), (40, 33824), (42, 33857), (46, 33929), (48, 33947), (49, 34001), (52, 34082), (54, 34106), (55, 34112), (58, 34163), (59, 34196), (63, 34265), (66, 34310), (70, 34391), (71, 34424), (72, 34427), (86, 34646),

Gene: Percival_59 Start: 38819, Stop: 40306, Start Num: 16

Candidate Starts for Percival_59:

(Start: 16 @38819 has 5 MA's), (20, 38882), (21, 38912), (23, 39011), (24, 39014), (25, 39050), (30, 39182), (31, 39194), (35, 39266), (36, 39323), (37, 39350), (41, 39428), (45, 39476), (51, 39653), (53, 39665), (60, 39785), (62, 39818), (64, 39878), (67, 39920), (68, 39932), (73, 40058), (75, 40073), (82, 40151), (83, 40169), (88, 40301),

Gene: Soondubu_46 Start: 37732, Stop: 39171, Start Num: 15

Candidate Starts for Soondubu_46:

(13, 37720), (Start: 15 @37732 has 1 MA's), (17, 37738), (19, 37756), (22, 37852), (23, 37924), (26, 37969), (27, 37975), (28, 38035), (31, 38095), (38, 38263), (47, 38422), (56, 38590), (61, 38644), (65, 38737), (67, 38776), (69, 38824), (77, 38947), (78, 38959), (79, 38965), (80, 38983), (87, 39103),

Gene: SuMoo_64 Start: 40543, Stop: 42009, Start Num: 16

Candidate Starts for SuMoo_64:

(Start: 16 @40543 has 5 MA's), (23, 40735), (30, 40906), (31, 40918), (44, 41191), (45, 41200), (62, 41539), (68, 41653), (76, 41803), (85, 41917),

Gene: Urza_50 Start: 33266, Stop: 34684, Start Num: 18

Candidate Starts for Urza_50:

(9, 33152), (10, 33158), (14, 33245), (Start: 18 @33266 has 3 MA's), (29, 33578), (31, 33632), (32, 33635), (33, 33680), (34, 33695), (36, 33761), (40, 33845), (42, 33878), (46, 33950), (48, 33968), (49, 34022), (52, 34103), (54, 34127), (55, 34133), (58, 34184), (59, 34217), (63, 34286), (66, 34331), (70, 34412), (71, 34445), (72, 34448), (86, 34667),

Gene: UtzChips_59 Start: 38303, Stop: 39808, Start Num: 16

Candidate Starts for UtzChips_59:

(4, 37964), (11, 38255), (Start: 16 @38303 has 5 MA's), (23, 38495), (30, 38666), (39, 38858), (41, 38912), (45, 38960), (49, 39062), (62, 39299), (69, 39449), (74, 39548), (89, 39803),

Gene: VieEnRose_50 Start: 33329, Stop: 34747, Start Num: 18

Candidate Starts for VieEnRose_50:

(9, 33215), (10, 33221), (14, 33308), (Start: 18 @33329 has 3 MA's), (29, 33641), (31, 33695), (32, 33698), (33, 33743), (34, 33758), (36, 33824), (40, 33908), (42, 33941), (46, 34013), (48, 34031), (49, 34085), (50, 34124), (52, 34166), (54, 34190), (55, 34196), (58, 34247), (59, 34280), (63, 34349), (66, 34394), (70, 34475), (71, 34508), (81, 34634), (86, 34730),