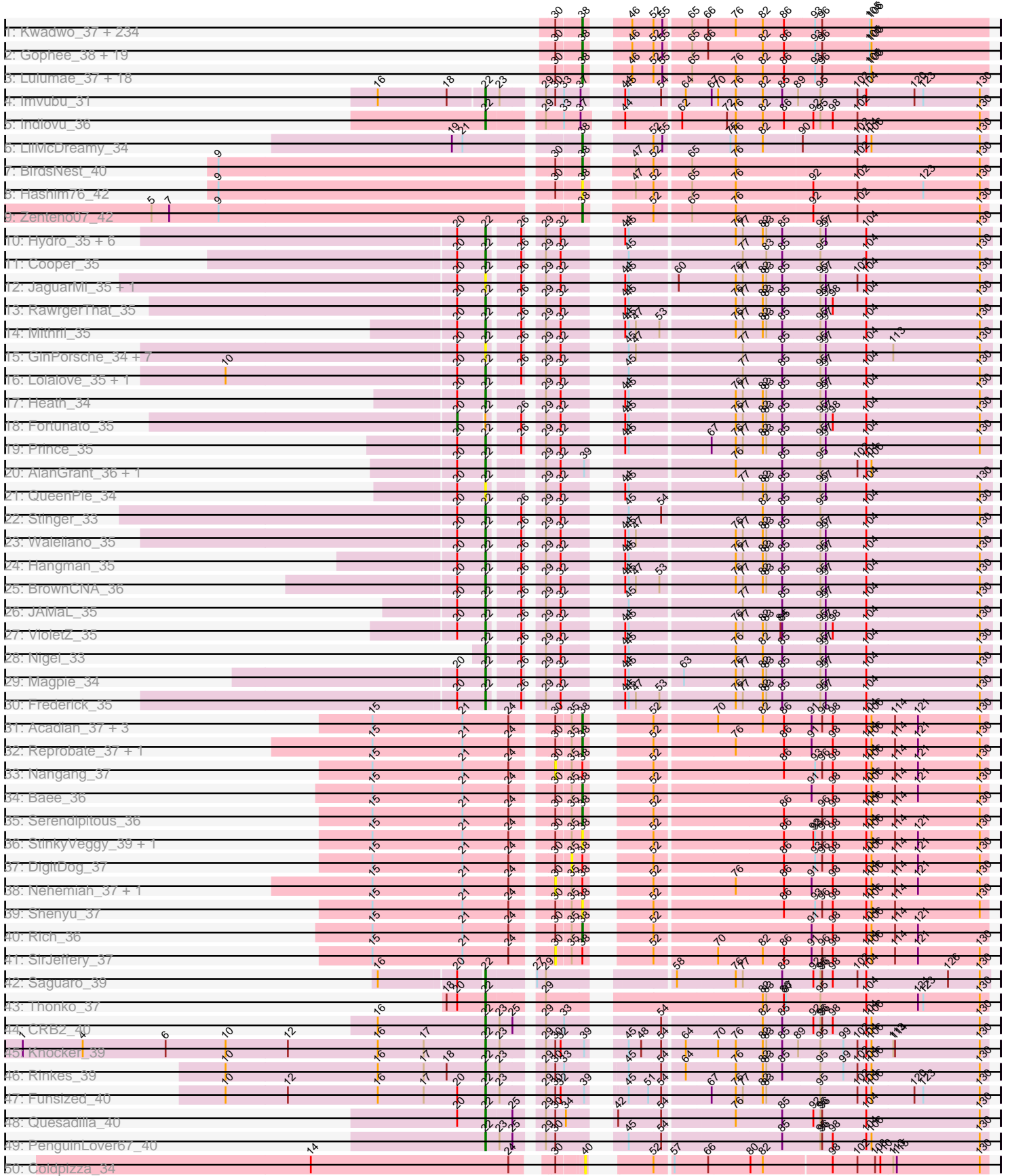
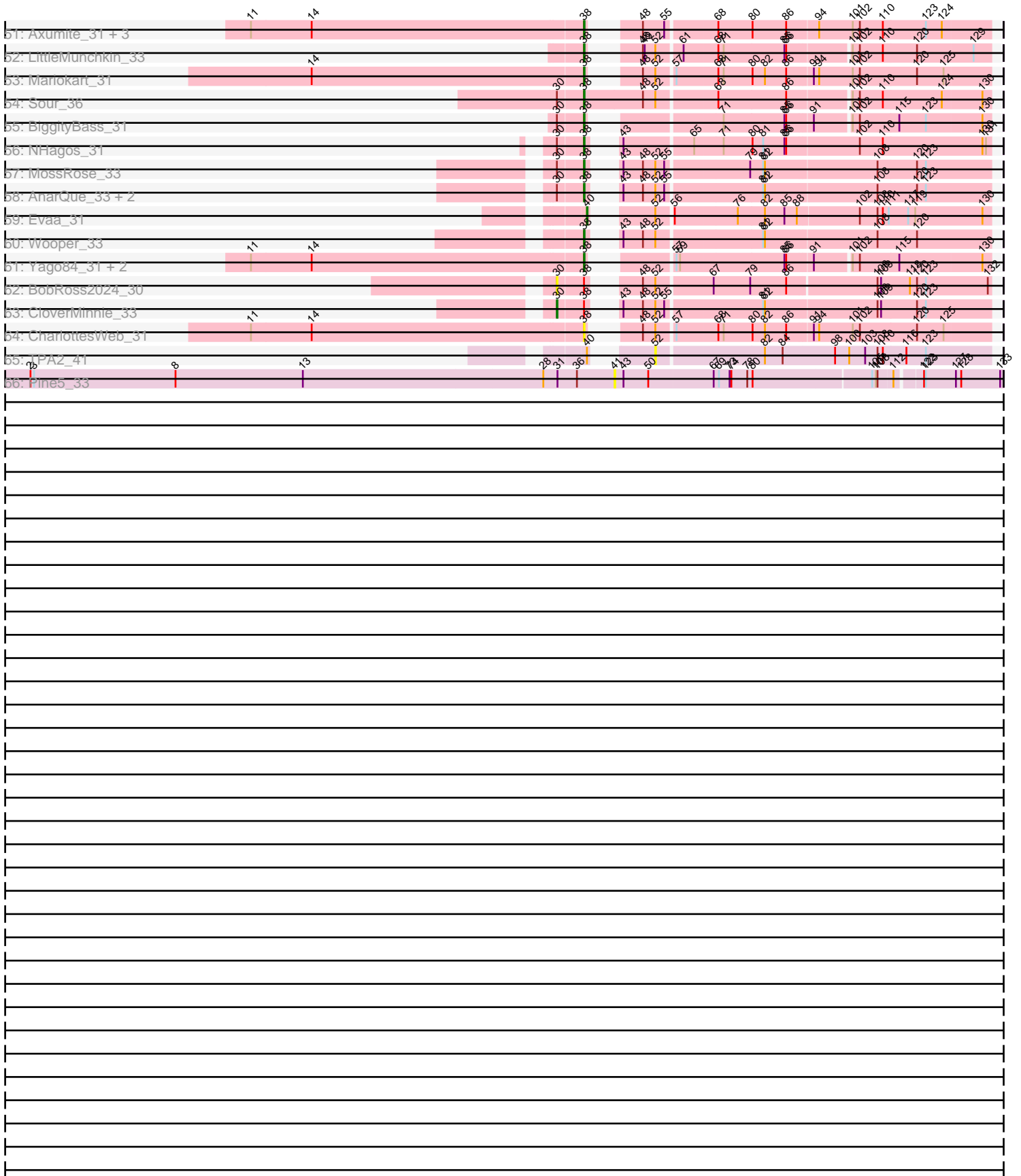


Pham 172562



Pham 172562



Note: Tracks are now grouped by subcluster and scaled. Switching in subcluster is indicated by changes in track color. Track scale is now set by default to display the region 30 bp upstream of start 1 to 30 bp downstream of the last possible start. If this default region is judged to be packed too tightly with annotated starts, the track will be further scaled to only show that region of the ORF with annotated starts. This action will be indicated by adding "Zoomed" to the title. For starts, yellow indicates the location of called starts comprised solely of Glimmer/GeneMark auto-annotations, green indicates the location of called starts with at least 1 manual gene annotation.

Pham 172562 Report

This analysis was run 11/02/24 on database version 579.

Pham number 172562 has 366 members, 38 are drafts.

Phages represented in each track:

- Track 1 : Kwadwo_37, Schueller_38, KingTut_29, Kailash_38, Manad_37, Mana_37, Kwksand96_37, Freya_37, Cannibal_38, Olak_37, Chute_37, IsaacEli_38, Beaglebox_37, Puhltonio_38, BlackStallion_38, Riggan_38, Durga_38, Sigman_38, MelsMeow_37, Scoot17C_38, UAch1_38, Mesh1_38, Lasso_38, LostAndPhound_37, Mecca_37, Ashraf_37, Schadenfreude_37, Scrick_38, MitKao_38, Haleema_37, TomBombadil_38, Mikota_38, Phipps_38, Craff_38, Coletti_37, Soile_38, Orion_38, Labeouficaum_37, Xavier_37, Potter_37, Lulwa_38, PhrodoBaggins_37, Kahve_37, Emiris_38, Cobra_38, Jiraiya_38, LeeLot_38, Dingo_38, FriarPreacher_38, Podrick_38, Mag7_37, Murdoc_38, Bluephacebaby_37, PinheadLarry_38, Pacifista_37, Roliet_38, CampRoach_38, Chaelin_38, Anderson_38, Harvey_38, SassyCat97_37, PG1_38, Charles1_38, Chah_39, Telesworld_37, RedMaple_37, Hertubise_38, Fozzie_37, Omniscient_38, Kloppinator_38, Badfish_38, Iridoclysis_38, Adriana_38, Lego3393_38, Matalotodo_38, DelRivs_37, Kimbrough_38, Lumine_37, Oosterbaan_38, Longacauda_37, Pops_38, Chunky_38, Nyala_37, KingVeVeVe_38, Phareon_38, Derpp_37, Struggle_37, Inverness_38, Usavi_38, SilverBell_38, Zelda_38, YouGoGlencoco_38, Gyarad_0038, Cosmolli16_37, LemonSlice_38, DonSanchon_37, Legolas_37, LuckyMarjie_37, HighStump_37, HSavage_38, Basato_39, Mcshane_37, Eremos_38, Frankicide_38, Apizium_37, Dice_37, Daka_38, Cher_37, Altwerkus_37, LasagnaCat_38, JacAttac_38, Eugenia_38, Hocus_37, OSmaximus_38, Brilliant_38, Dione_37, Veritas_37, Sheila_38, Gwilliam_38, Skippy_38, Doddsville_38, Katniss_38, Etaye_38, Swiphy_39, Antonia_37, Plmatters_38, Squiggle_38, Megamind20_38, PhatCats2014_38, GeneCoco_38, Trypo_38, Newman_38, Soto_38, JakeO_37, Hartsy_38, Morty_38, Piglet_0037, Squid_38, Zaider_39, Phunky_38, HenryJackson_37, Weher20_38, Phamished_38, Cornobble_37, FugateOSU_37, ABU_38, Hamish_38, Orfeu_37, BlueHusk_38, Pinkman_37, Numberten_38, Vista_38, OliverWalter_38, Keitherie_38, Windsor_37, FluffyNinja_38, Virgeve_37, ImtiyazSitla_37, Thora_38, PhatLouie_38, Vivaldi_38, Swish_38, Chorkpop_38, PhrankReynolds_37, Melc17_38, Aelin_37, Serendipity_38, Nacho_0038, CheetO_38, CharlieGBrown_37, Placalicious_37, Jiminy_37, Serpentine_0038, Phergie_37, Haimas_38, KlimbOn_38, Suffolk_38, Rimu_39, PhenghisKhan_37, Jillium_37, Sophia_37, Surely_38, ThreeOh3D2_38, Nicole21_38, Slatt_38, DuchessDung_36, Hetaeria_38, Phleuron_37, Mosaic_37, Solosis_37, Virapocalypse_38, AltPhacts_38, Crownjwl_38, Burr_37, Kikipoo_38, Maru_37, Yoshand_38, Selr12_38, Inchworm_38, UncleHowie_38, Waterdiva_38, DaddyDaniels_38, MrPhizzler_37, BatteryCK_37, Dati_38, Childish_37, MiniBoss_38, Ricotta_37, Prickles_38, Mulan_37, Megatron_38, Pherdinand_38, Oline_37,

Maskar_37, Orwigg_38, JangoPhett_38, Horchata_38, DirtJuice_38, Magic8_38, Zonia_38, TyrionL_37, Thunderbird_37, KLucky39_38, DoesntMatter_38, Pipsqueak_38, AbsoluteMadLad_37, Fang_38, Quisquiliae_38, Gareth_37, JDog_37, Buckeye_38, Duggie_37, MichaelPhcott_37, Wallhey_37, SDcharge11_38

- Track 2 : Gophee_38, Morgushi_38, Samaymay_38, Timmi_37, Bishoperium_37, Vortex_38, QueenBeane_38, Banjo_37, Giraffe_38, LeiMonet_38, MRabcd_37, TallGrassMM_38, True_37, CamL_38, Daffy_38, Fringe_38, Mutante_37, Andre_38, Boehler_38, Held_38
- Track 3 : Lulumae_37, Lopsy_37, Tooj_38, ProfessorX_38, Tomlarah_38, Colbert_38, ShiVal_38, EmpTee_38, Carthage_36, Simielle_37, Roscoe_39, Vaishali24_37, Toni_37, Roy17_38, Spartan300_38, Grand2040_37, Valjean_38, Olive_38, Robyn_37
- Track 4 : Imvubu_31
- Track 5 : Indlovu_36
- Track 6 : LilMcDreamy_34
- Track 7 : BirdsNest_40
- Track 8 : Hashim76_42
- Track 9 : Zenteno07_42
- Track 10 : Hydro_35, Fanaw_34, BobbyK_35, Austelle_36, Zemanar_36, Apex_35, Mudslide_35
- Track 11 : Cooper_35
- Track 12 : JaguarMi_35, Xincheng_34
- Track 13 : RawrgerThat_35
- Track 14 : Mithril_35
- Track 15 : GinPorsche_34, Antihero_34, Ahwei_34, Nanao_34, Hally898_34, Lambano_34, Epah_34, Poster_34
- Track 16 : Lolalove_35, ChrisnMich_34
- Track 17 : Heath_34
- Track 18 : Fortunato_35
- Track 19 : Prince_35
- Track 20 : AlanGrant_36, Vincenzo_36
- Track 21 : QueenPie_34
- Track 22 : Stinger_33
- Track 23 : Waleliano_35
- Track 24 : Hangman_35
- Track 25 : BrownCNA_36
- Track 26 : JAMaL_35
- Track 27 : VioletZ_35
- Track 28 : Nigel_33
- Track 29 : Magpie_34
- Track 30 : Frederick_35
- Track 31 : Acadian_37, EastView9101_36, Donny_37, Suigeneris_37
- Track 32 : Reprobate_37, Phelemich_37
- Track 33 : Nangang_37
- Track 34 : Bae_36
- Track 35 : Serendipitous_36
- Track 36 : StinkyVeggy_39, KarasumaRum_39
- Track 37 : DigitDog_37
- Track 38 : Nehemiah_37, Mysterious_39
- Track 39 : Shenyu_37
- Track 40 : Rich_36
- Track 41 : SirJeffery_37
- Track 42 : Saguaro_39

- Track 43 : Thonko_37
- Track 44 : CRB2_40
- Track 45 : Knocker_39
- Track 46 : Rinkes_39
- Track 47 : Funsized_40
- Track 48 : Quesadilla_40
- Track 49 : PenguinLover67_40
- Track 50 : Coldpizza_34
- Track 51 : Axumite_31, Shatter_31, Ligma_31, Fresco_31
- Track 52 : LittleMunchkin_33
- Track 53 : Mariokart_31
- Track 54 : Sour_36
- Track 55 : BiggityBass_31
- Track 56 : NHagos_31
- Track 57 : MossRose_33
- Track 58 : AnarQue_33, MakoManhole_33, CaiB_33
- Track 59 : Evaa_31
- Track 60 : Wooper_33
- Track 61 : Yago84_31, Sisko_31, AnClar_32
- Track 62 : BobRoss2024_30
- Track 63 : CloverMinnie_33
- Track 64 : CharlottesWeb_31
- Track 65 : TPA2_41
- Track 66 : Pine5_33

Summary of Final Annotations (See graph section above for start numbers):

The start number called the most often in the published annotations is 38, it was called in 291 of the 328 non-draft genes in the pham.

Genes that call this "Most Annotated" start:

- ABU_38, AbsoluteMadLad_37, Acadian_37, Adriana_38, Aelin_37, AltPhacts_38, Altwerkus_37, AnClar_32, AnarQue_33, Anderson_38, Andre_38, Antonia_37, Apizium_37, Ashraf_37, Axumite_31, Badfish_38, Bae_36, Banjo_37, Basato_39, BatteryCK_37, Beaglebox_37, BiggityBass_31, BirdsNest_40, Bishoperium_37, BlackStallion_38, BlueHusk_38, Bluephacebaby_37, Boehler_38, Brilliant_38, Buckeye_38, Burr_37, CaiB_33, CamL_38, CampRoach_38, Cannibal_38, Carthage_36, Chaelin_38, Chah_39, Charles1_38, CharlieGBrown_37, CharlottesWeb_31, CheetO_38, Cher_37, Childish_37, Chorkpop_38, Chunky_38, Chute_37, Cobra_38, Colbert_38, Coletti_37, Cornobble_37, Cosmolli16_37, Craff_38, Crownjwl_38, DaddyDaniels_38, Daffy_38, Daka_38, Dati_38, DelRivs_37, Derpp_37, Dice_37, Dingo_38, Dione_37, DirtJuice_38, Doddsville_38, DoesntMatter_38, DonSancho_37, Donny_37, DuchessDung_36, Duggie_37, Durga_38, EastView9101_36, Emiris_38, EmpTee_38, Eremos_38, Etaye_38, Eugenia_38, Fang_38, FluffyNinja_38, Fozzie_37, Frankicide_38, Fresco_31, Freya_37, FriarPreacher_38, Fringe_38, FugateOSU_37, Gareth_37, GeneCoco_38, Giraffe_38, Gophee_38, Grand2040_37, Gwilliam_38, Gyarad_0038, HSavage_38, Haimas_38, Haleema_37, Hamish_38, Hartsy_38, Harvey_38, Hashim76_42, Held_38, HenryJackson_37, Hertubise_38, Hetaeria_38, HighStump_37, Hocus_37, Horchata_38, ImtiyazSitla_37, Inchworm_38, Inverness_38, Iridoclysis_38,

IsaacEli_38, JDog_37, JacAttac_38, JakeO_37, JangoPhett_38, Jillium_37, Jiminy_37, Jiraiya_38, KLucky39_38, Kahve_37, Kailash_38, KarasumaRum_39, Katniss_38, Keitherie_38, Kikipoo_38, Kimbrough_38, KingTut_29, KingVeVeVe_38, KlimbOn_38, Kloppinator_38, Kwadwo_37, Kwksand96_37, Labeouficaum_37, LasagnaCat_38, Lasso_38, LeeLot_38, Lego3393_38, Legolas_37, LeiMonet_38, LemonSlice_38, Ligma_31, LilMcDreamy_34, LittleMunchkin_33, Longacauda_37, Lopsy_37, LostAndPhound_37, LuckyMarjie_37, Lulumae_37, Lulwa_38, Lumine_37, MRabcd_37, Mag7_37, Magic8_38, MakoManhole_33, Mana_37, Manad_37, Mariokart_31, Maru_37, Maskar_37, Matalotodo_38, Mcshane_37, Mecca_37, Megamind20_38, Megatron_38, Melc17_38, MelsMeow_37, Mesh1_38, MichaelPhcott_37, Mikota_38, MiniBoss_38, MitKao_38, Morgushi_38, Morty_38, Mosaic_37, MossRose_33, MrPhizzler_37, Mulan_37, Murdoc_38, Mutante_37, NHagos_31, Nacho_0038, Newman_38, Nicole21_38, Numberten_38, Nyala_37, OSmaximus_38, Olak_37, Oline_37, Olive_38, OliverWalter_38, Omniscient_38, Oosterbaan_38, Orfeu_37, Orion_38, Orwigg_38, PG1_38, Pacifista_37, Phamished_38, Phareon_38, PhatCats2014_38, PhatLouie_38, Phelemich_37, Phenghiskhan_37, Pherdinand_38, Phergie_37, Phipps_38, Phleuron_37, PhrankReynolds_37, PhrodoBaggins_37, Phunky_38, Piglet_0037, PinheadLarry_38, Pinkman_37, Pipsqueak_38, Placalicious_37, Plmatters_38, Podrick_38, Pops_38, Potter_37, Prickles_38, ProfessorX_38, Puhltonio_38, QueenBeane_38, Quisquillae_38, RedMaple_37, Reprobate_37, Rich_36, Ricotta_37, Riggan_38, Rimu_39, Robyn_37, Roliet_38, Roscoe_39, Roy17_38, SDcharge11_38, Samaymay_38, SassyCat97_37, Schadenfreude_37, Schueller_38, Scoot17C_38, Scrick_38, Selr12_38, Serendipitous_36, Serendipity_38, Serpentine_0038, Shatter_31, Sheila_38, Shenyu_37, ShiVal_38, Sigman_38, SilverBell_38, Simielle_37, Sisko_31, Skippy_38, Slatt_38, Soile_38, Solosis_37, Sophia_37, Soto_38, Sour_36, Spartan300_38, Squid_38, Squiggle_38, StinkyVeggy_39, Struggle_37, Suffolk_38, Suigeneris_37, Surely_38, Swiphy_39, Swish_38, TallGrassMM_38, Telesworld_37, Thora_38, ThreeOh3D2_38, Thunderbird_37, Timmi_37, TomBombadil_38, Tomlarah_38, Toni_37, Tooj_38, True_37, Trypo_38, TyrionL_37, UAch1_38, UncleHowie_38, Usavi_38, Vaishali24_37, Valjean_38, Veritas_37, Virapocalypse_38, Virgeve_37, Vista_38, Vivaldi_38, Vortex_38, Wallhey_37, Waterdiva_38, Weher20_38, Windsor_37, Wooper_33, Xavier_37, Yago84_31, Yoshand_38, YouGoGlencoco_38, Zaider_39, Zelda_38, Zenteno07_42, Zonia_38,

Genes that have the "Most Annotated" start but do not call it:

- BobRoss2024_30, CloverMinnie_33, DigitDog_37, Mysterious_39, Nangang_37, Nehemiah_37, SirJeffery_37,

Genes that do not have the "Most Annotated" start:

- Ahwei_34, AlanGrant_36, Antihero_34, Apex_35, Austelle_36, BobbyK_35, BrownCNA_36, CRB2_40, ChrisnMich_34, Coldpizza_34, Cooper_35, Epah_34, Evaa_31, Fanaw_34, Fortunato_35, Frederick_35, Funsized_40, GinPorsche_34, Hally898_34, Hangman_35, Heath_34, Hydro_35, Imvubu_31, Indlovu_36, JAMaL_35, JaguarMi_35, Knocker_39, Lambano_34, Lolalove_35, Magpie_34, Mithril_35, Mudslide_35, Nanao_34, Nigel_33, PenguinLover67_40, Pine5_33, Poster_34, Prince_35, QueenPie_34, Quesadilla_40, RawrgerThat_35, Rinkes_39, Saguaro_39, Stinger_33, TPA2_41, Thonko_37, Vincenzo_36, VioletZ_35, Waleliano_35, Xincheng_34, Zemanar_36,

Summary by start number:

Start 20:

- Found in 40 of 366 (10.9%) of genes in pham
- Manual Annotations of this start: 1 of 328
- Called 2.5% of time when present
- Phage (with cluster) where this start called: Fortunato_35 (B4),

Start 22:

- Found in 47 of 366 (12.8%) of genes in pham
- Manual Annotations of this start: 34 of 328
- Called 97.9% of time when present
- Phage (with cluster) where this start called: Ahwei_34 (B4), AlanGrant_36 (B4), Antihero_34 (B4), Apex_35 (B4), Austelle_36 (B4), BobbyK_35 (B4), BrownCNA_36 (B4), CRB2_40 (B9), ChrisnMich_34 (B4), Cooper_35 (B4), Epah_34 (B4), Fanaw_34 (B4), Frederick_35 (B4), Funsized_40 (B9), GinPorsche_34 (B4), Hally898_34 (B4), Hangman_35 (B4), Heath_34 (B4), Hydro_35 (B4), Imvubu_31 (B10), Indlovu_36 (B11), JAMaL_35 (B4), JaguarMi_35 (B4), Knocker_39 (B9), Lambano_34 (B4), Lolalove_35 (B4), Magpie_34 (B4), Mithril_35 (B4), Mudslide_35 (B4), Nanao_34 (B4), Nigel_33 (B4), PenguinLover67_40 (B9), Poster_34 (B4), Prince_35 (B4), QueenPie_34 (B4), Quesadilla_40 (B9), RawrgerThat_35 (B4), Rinke_39 (B9), Saguaro_39 (B7), Stinger_33 (B4), Thonko_37 (B8), Vincenzo_36 (B4), VioletZ_35 (B4), Waleliano_35 (B4), Xincheng_34 (B4), Zemanar_36 (B4),

Start 30:

- Found in 309 of 366 (84.4%) of genes in pham
- Manual Annotations of this start: 1 of 328
- Called 1.9% of time when present
- Phage (with cluster) where this start called: BobRoss2024_30 (DR), CloverMinnie_33 (DR), Mysterious_39 (B5), Nangang_37 (B5), Nehemiah_37 (B5), SirJeffery_37 (B5),

Start 35:

- Found in 17 of 366 (4.6%) of genes in pham
- No Manual Annotations of this start.
- Called 5.9% of time when present
- Phage (with cluster) where this start called: DigitDog_37 (B5),

Start 38:

- Found in 315 of 366 (86.1%) of genes in pham
- Manual Annotations of this start: 291 of 328
- Called 97.8% of time when present
- Phage (with cluster) where this start called: ABU_38 (B1), AbsoluteMadLad_37 (B1), Acadian_37 (B5), Adriana_38 (B1), Aelin_37 (B1), AltPhacts_38 (B1), Altwerkus_37 (B1), AnClar_32 (DR), AnarQue_33 (DR), Anderson_38 (B1), Andre_38 (B1), Antonia_37 (B1), Apizium_37 (B1), Ashraf_37 (B1), Axumite_31 (DR), Badfish_38 (B1), Bae_36 (B5), Banjo_37 (B1), Basato_39 (B1), BatteryCK_37 (B1), Beaglebox_37 (B1), BiggityBass_31 (DR), BirdsNest_40 (B13), Bishoperium_37 (B1), BlackStallion_38 (B1), BlueHusk_38 (B1), Bluephacebaby_37 (B1), Boehler_38 (B1), Brilliant_38 (B1), Buckeye_38 (B1), Burr_37 (B1), CaiB_33 (DR), CamL_38 (B1), CampRoach_38 (B1), Cannibal_38 (B1), Carthage_36 (B1), Chaelin_38 (B1), Chah_39 (B1), Charles1_38 (B1), CharlieGBrown_37 (B1), CharlottesWeb_31 (DR), CheetO_38 (B1), Cher_37 (B1), Childish_37 (B1), Chorkpop_38 (B1), Chunky_38 (B1), Chute_37 (B1), Cobra_38 (B1), Colbert_38 (B1), Coletti_37 (B1), Cornobble_37 (B1), Cosmolli16_37 (B1), Craff_38 (B1), Crownjwl_38 (B1), DaddyDaniels_38 (B1),

Daffy_38 (B1), Daka_38 (B1), Dati_38 (B1), DelRivs_37 (B1), Derpp_37 (B1), Dice_37 (B1), Dingo_38 (B1), Dione_37 (B1), DirtJuice_38 (B1), Doddsville_38 (B1), DoesntMatter_38 (B1), DonSanchon_37 (B1), Donny_37 (B5), DuchessDung_36 (B1), Duggie_37 (B1), Durga_38 (B1), EastView9101_36 (B5), Emiris_38 (B1), EmpTee_38 (B1), Eremos_38 (B1), Etaye_38 (B1), Eugenia_38 (B1), Fang_38 (B1), FluffyNinja_38 (B1), Fozzie_37 (B1), Frankicide_38 (B1), Fresco_31 (DR), Freya_37 (B1), FriarPreacher_38 (B1), Fringe_38 (B1), FugateOSU_37 (B1), Gareth_37 (B1), GeneCoco_38 (B1), Giraffe_38 (B1), Gophee_38 (B1), Grand2040_37 (B1), Gwilliam_38 (B1), Gyarad_0038 (B1), HSavage_38 (B1), Haimas_38 (B1), Haleema_37 (B1), Hamish_38 (B1), Hartsy_38 (B1), Harvey_38 (B1), Hashim76_42 (B13), Held_38 (B1), HenryJackson_37 (B1), Hertubise_38 (B1), Hetaeria_38 (B1), HighStump_37 (B1), Hocus_37 (B1), Horchata_38 (B1), ImtiyazSitla_37 (B1), Inchworm_38 (B1), Inverness_38 (B1), Iridoclysis_38 (B1), IsaacEli_38 (B1), JDog_37 (B1), JacAttac_38 (B1), JakeO_37 (B1), JangoPhett_38 (B1), Jillium_37 (B1), Jiminy_37 (B1), Jiraiya_38 (B1), KLucky39_38 (B1), Kahve_37 (B1), Kailash_38 (B1), KarasumaRum_39 (B5), Katniss_38 (B1), Keitherie_38 (B1), Kikipoo_38 (B1), Kimbrough_38 (B1), KingTut_29 (B1), KingVeVeVe_38 (B1), KlimbOn_38 (B1), Kloppinator_38 (B1), Kwadwo_37 (B1), Kwksand96_37 (B1), Labeouficaum_37 (B1), LasagnaCat_38 (B1), Lasso_38 (B1), LeeLot_38 (B1), Lego3393_38 (B1), Legolas_37 (B1), LeiMonet_38 (B1), LemonSlice_38 (B1), Ligma_31 (DR), LilMcDreamy_34 (B12), LittleMunchkin_33 (DR), Longacauda_37 (B1), Lopsy_37 (B1), LostAndPhound_37 (B1), LuckyMarjie_37 (B1), Lulumae_37 (B1), Lulwa_38 (B1), Lumine_37 (B1), MRabcd_37 (B1), Mag7_37 (B1), Magic8_38 (B1), MakoManhole_33 (DR), Mana_37 (B1), Manad_37 (B1), Mariokart_31 (DR), Maru_37 (B1), Maskar_37 (B1), Matalotodo_38 (B1), Mcshane_37 (B1), Mecca_37 (B1), Megamind20_38 (B1), Megatron_38 (B1), Melc17_38 (B1), MelsMeow_37 (B1), Mesh1_38 (B1), MichaelPhcott_37 (B1), Mikota_38 (B1), MiniBoss_38 (B1), MitKao_38 (B1), Morgushi_38 (B1), Morty_38 (B1), Mosaic_37 (B1), MossRose_33 (DR), MrPhizzler_37 (B1), Mulan_37 (B1), Murdoc_38 (B1), Mutante_37 (B1), NHagos_31 (DR), Nacho_0038 (B1), Newman_38 (B1), Nicole21_38 (B1), Numberten_38 (B1), Nyala_37 (B1), OSmaximus_38 (B1), Olak_37 (B1), Oline_37 (B1), Olive_38 (B1), OliverWalter_38 (B1), Omniscient_38 (B1), Oosterbaan_38 (B1), Orfeu_37 (B1), Orion_38 (B1), Orwigg_38 (B1), PG1_38 (B1), Pacifista_37 (B1), Phamished_38 (B1), Phareon_38 (B1), PhatCats2014_38 (B1), PhatLouie_38 (B1), Phelemich_37 (B5), PhenghisKhan_37 (B1), Pherdinand_38 (B1), Phergie_37 (B1), Phipps_38 (B1), Phleuron_37 (B1), PhrankReynolds_37 (B1), PhrodoBaggins_37 (B1), Phunky_38 (B1), Piglet_0037 (B1), PinheadLarry_38 (B1), Pinkman_37 (B1), Pipsqueak_38 (B1), Placalicious_37 (B1), Plmatters_38 (B1), Podrick_38 (B1), Pops_38 (B1), Potter_37 (B1), Prickles_38 (B1), ProfessorX_38 (B1), Puhltonio_38 (B1), QueenBeane_38 (B1), Quisquillae_38 (B1), RedMaple_37 (B1), Reprobate_37 (B5), Rich_36 (B5), Ricotta_37 (B1), Riggan_38 (B1), Rimu_39 (B1), Robyn_37 (B1), Roliet_38 (B1), Roscoe_39 (B1), Roy17_38 (B1), SDcharge11_38 (B1), Samaymay_38 (B1), SassyCat97_37 (B1), Schadenfreude_37 (B1), Schueller_38 (B1), Scoot17C_38 (B1), Scrick_38 (B1), Selr12_38 (B1), Serendipitous_36 (B5), Serendipity_38 (B1), Serpentine_0038 (B1), Shatter_31 (DR), Sheila_38 (B1), Shenyu_37 (B5), ShiVal_38 (B1), Sigman_38 (B1), SilverBell_38 (B1), Simielle_37 (B1), Sisko_31 (DR), Skippy_38 (B1), Slatt_38 (B1), Soile_38 (B1), Solosis_37 (B1), Sophia_37 (B1), Soto_38 (B1), Sour_36 (DR), Spartan300_38 (B1), Squid_38 (B1), Squiggle_38 (B1), StinkyVeggy_39 (B5), Struggle_37 (B1), Suffolk_38 (B1), Suigeneris_37 (B5), Surely_38 (B1), Swiphy_39 (B1), Swish_38 (B1), TallGrassMM_38 (B1), Telesworld_37 (B1), Thora_38 (B1), ThreeOh3D2_38 (B1), Thunderbird_37 (B1), Timmi_37 (B1), TomBombadil_38 (B1), Tomlarah_38 (B1), Toni_37 (B1), Tooj_38 (B1), True_37 (B1), Trypo_38 (B1), TyrionL_37 (B1),

UAch1_38 (B1), UncleHowie_38 (B1), Usavi_38 (B1), Vaishali24_37 (B1), Valjean_38 (B1), Veritas_37 (B1), Virapocalypse_38 (B1), Virgeve_37 (B1), Vista_38 (B1), Vivaldi_38 (B1), Vortex_38 (B1), Wallhey_37 (B1), Waterdiva_38 (B1), Weher20_38 (B1), Windsor_37 (B1), Wooper_33 (DR), Xavier_37 (B1), Yago84_31 (DR), Yoshand_38 (B1), YouGoGlencoco_38 (B1), Zaider_39 (B1), Zelda_38 (B1), Zenteno07_42 (B13), Zonia_38 (B1),

Start 40:

- Found in 3 of 366 (0.8%) of genes in pham
- Manual Annotations of this start: 1 of 328
- Called 66.7% of time when present
- Phage (with cluster) where this start called: Coldpizza_34 (DR), Evaa_31 (DR),

Start 41:

- Found in 1 of 366 (0.3%) of genes in pham
- No Manual Annotations of this start.
- Called 100.0% of time when present
- Phage (with cluster) where this start called: Pine5_33 (singleton),

Start 52:

- Found in 309 of 366 (84.4%) of genes in pham
- No Manual Annotations of this start.
- Called 0.3% of time when present
- Phage (with cluster) where this start called: TPA2_41 (singleton),

Summary by clusters:

There are 12 clusters represented in this pham: singleton, B8, B4, B5, B7, B12, B1, B10, B11, DR, B9, B13,

Info for manual annotations of cluster B1:

- Start number 38 was manually annotated 262 times for cluster B1.

Info for manual annotations of cluster B10:

- Start number 22 was manually annotated 1 time for cluster B10.

Info for manual annotations of cluster B11:

- Start number 22 was manually annotated 1 time for cluster B11.

Info for manual annotations of cluster B12:

- Start number 38 was manually annotated 1 time for cluster B12.

Info for manual annotations of cluster B13:

- Start number 38 was manually annotated 2 times for cluster B13.

Info for manual annotations of cluster B4:

- Start number 20 was manually annotated 1 time for cluster B4.
- Start number 22 was manually annotated 24 times for cluster B4.

Info for manual annotations of cluster B5:

- Start number 38 was manually annotated 9 times for cluster B5.

Info for manual annotations of cluster B7:

- Start number 22 was manually annotated 1 time for cluster B7.

Info for manual annotations of cluster B8:

- Start number 22 was manually annotated 1 time for cluster B8.

Info for manual annotations of cluster B9:

- Start number 22 was manually annotated 6 times for cluster B9.

Info for manual annotations of cluster DR:

- Start number 30 was manually annotated 1 time for cluster DR.
- Start number 38 was manually annotated 17 times for cluster DR.
- Start number 40 was manually annotated 1 time for cluster DR.

Gene Information:

Gene: ABU_38 Start: 35579, Stop: 36202, Start Num: 38

Candidate Starts for ABU_38:

(Start: 30 @35537 has 1 MA's), (Start: 38 @35579 has 291 MA's), (46, 35618), (52, 35654), (55, 35669), (65, 35711), (66, 35735), (76, 35780), (82, 35825), (86, 35861), (93, 35909), (96, 35921), (105, 36002), (106, 36005),

Gene: AbsoluteMadLad_37 Start: 35588, Stop: 36211, Start Num: 38

Candidate Starts for AbsoluteMadLad_37:

(Start: 30 @35546 has 1 MA's), (Start: 38 @35588 has 291 MA's), (46, 35627), (52, 35663), (55, 35678), (65, 35720), (66, 35744), (76, 35789), (82, 35834), (86, 35870), (93, 35918), (96, 35930), (105, 36011), (106, 36014),

Gene: Acadian_37 Start: 36188, Stop: 36808, Start Num: 38

Candidate Starts for Acadian_37:

(15, 35858), (21, 36011), (24, 36089), (Start: 30 @36146 has 1 MA's), (35, 36170), (Start: 38 @36188 has 291 MA's), (52, 36257), (70, 36353), (82, 36428), (86, 36464), (91, 36509), (96, 36527), (98, 36545), (104, 36602), (106, 36611), (114, 36650), (121, 36689), (130, 36794),

Gene: Adriana_38 Start: 35577, Stop: 36200, Start Num: 38

Candidate Starts for Adriana_38:

(Start: 30 @35535 has 1 MA's), (Start: 38 @35577 has 291 MA's), (46, 35616), (52, 35652), (55, 35667), (65, 35709), (66, 35733), (76, 35778), (82, 35823), (86, 35859), (93, 35907), (96, 35919), (105, 36000), (106, 36003),

Gene: Aelin_37 Start: 35143, Stop: 35766, Start Num: 38

Candidate Starts for Aelin_37:

(Start: 30 @35101 has 1 MA's), (Start: 38 @35143 has 291 MA's), (46, 35182), (52, 35218), (55, 35233), (65, 35275), (66, 35299), (76, 35344), (82, 35389), (86, 35425), (93, 35473), (96, 35485), (105, 35566), (106, 35569),

Gene: Ahwei_34 Start: 34752, Stop: 35504, Start Num: 22

Candidate Starts for Ahwei_34:

(Start: 20 @34710 has 1 MA's), (Start: 22 @34752 has 34 MA's), (26, 34797), (29, 34818), (32, 34842), (45, 34911), (47, 34923), (77, 35088), (85, 35154), (95, 35214), (97, 35223), (104, 35292), (113, 35337), (130, 35484),

Gene: AlanGrant_36 Start: 36503, Stop: 37255, Start Num: 22

Candidate Starts for AlanGrant_36:

(Start: 20 @36461 has 1 MA's), (Start: 22 @36503 has 34 MA's), (29, 36569), (32, 36593), (39, 36632), (76, 36827), (85, 36905), (95, 36965), (102, 37028), (104, 37043), (106, 37052),

Gene: AltPhacts_38 Start: 35566, Stop: 36189, Start Num: 38

Candidate Starts for AltPhacts_38:

(Start: 30 @35524 has 1 MA's), (Start: 38 @35566 has 291 MA's), (46, 35605), (52, 35641), (55, 35656), (65, 35698), (66, 35722), (76, 35767), (82, 35812), (86, 35848), (93, 35896), (96, 35908), (105, 35989), (106, 35992),

Gene: Altwerkus_37 Start: 35267, Stop: 35890, Start Num: 38

Candidate Starts for Altwerkus_37:

(Start: 30 @35225 has 1 MA's), (Start: 38 @35267 has 291 MA's), (46, 35306), (52, 35342), (55, 35357), (65, 35399), (66, 35423), (76, 35468), (82, 35513), (86, 35549), (93, 35597), (96, 35609), (105, 35690), (106, 35693),

Gene: AnClar_32 Start: 31581, Stop: 32177, Start Num: 38

Candidate Starts for AnClar_32:

(11, 31023), (14, 31125), (Start: 38 @31581 has 291 MA's), (57, 31671), (59, 31677), (85, 31848), (86, 31851), (91, 31890), (101, 31947), (102, 31959), (115, 32025), (130, 32163),

Gene: AnarQue_33 Start: 30674, Stop: 31288, Start Num: 38

Candidate Starts for AnarQue_33:

(Start: 30 @30632 has 1 MA's), (Start: 38 @30674 has 291 MA's), (43, 30689), (48, 30722), (52, 30743), (55, 30758), (81, 30911), (82, 30914), (108, 31097), (120, 31163), (123, 31178),

Gene: Anderson_38 Start: 35572, Stop: 36195, Start Num: 38

Candidate Starts for Anderson_38:

(Start: 30 @35530 has 1 MA's), (Start: 38 @35572 has 291 MA's), (46, 35611), (52, 35647), (55, 35662), (65, 35704), (66, 35728), (76, 35773), (82, 35818), (86, 35854), (93, 35902), (96, 35914), (105, 35995), (106, 35998),

Gene: Andre_38 Start: 35571, Stop: 36194, Start Num: 38

Candidate Starts for Andre_38:

(Start: 30 @35529 has 1 MA's), (Start: 38 @35571 has 291 MA's), (46, 35610), (52, 35646), (55, 35661), (65, 35703), (66, 35727), (82, 35817), (86, 35853), (93, 35901), (96, 35913), (105, 35994), (106, 35997),

Gene: Antihero_34 Start: 34752, Stop: 35504, Start Num: 22

Candidate Starts for Antihero_34:

(Start: 20 @34710 has 1 MA's), (Start: 22 @34752 has 34 MA's), (26, 34797), (29, 34818), (32, 34842), (45, 34911), (47, 34923), (77, 35088), (85, 35154), (95, 35214), (97, 35223), (104, 35292), (113, 35337), (130, 35484),

Gene: Antonia_37 Start: 35143, Stop: 35766, Start Num: 38

Candidate Starts for Antonia_37:

(Start: 30 @35101 has 1 MA's), (Start: 38 @35143 has 291 MA's), (46, 35182), (52, 35218), (55, 35233), (65, 35275), (66, 35299), (76, 35344), (82, 35389), (86, 35425), (93, 35473), (96, 35485), (105, 35566), (106, 35569),

Gene: Apex_35 Start: 35958, Stop: 36710, Start Num: 22

Candidate Starts for Apex_35:

(Start: 20 @35916 has 1 MA's), (Start: 22 @35958 has 34 MA's), (26, 36003), (29, 36024), (32, 36048), (44, 36111), (45, 36117), (76, 36282), (77, 36294), (82, 36327), (83, 36333), (85, 36360), (95, 36420), (97, 36429), (104, 36498), (130, 36690),

Gene: Apizium_37 Start: 35335, Stop: 35958, Start Num: 38

Candidate Starts for Apizium_37:

(Start: 30 @35293 has 1 MA's), (Start: 38 @35335 has 291 MA's), (46, 35374), (52, 35410), (55, 35425), (65, 35467), (66, 35491), (76, 35536), (82, 35581), (86, 35617), (93, 35665), (96, 35677), (105, 35758), (106, 35761),

Gene: Ashraf_37 Start: 35139, Stop: 35762, Start Num: 38

Candidate Starts for Ashraf_37:

(Start: 30 @35097 has 1 MA's), (Start: 38 @35139 has 291 MA's), (46, 35178), (52, 35214), (55, 35229), (65, 35271), (66, 35295), (76, 35340), (82, 35385), (86, 35421), (93, 35469), (96, 35481), (105, 35562), (106, 35565),

Gene: Austelle_36 Start: 36414, Stop: 37166, Start Num: 22

Candidate Starts for Austelle_36:

(Start: 20 @36372 has 1 MA's), (Start: 22 @36414 has 34 MA's), (26, 36459), (29, 36480), (32, 36504), (44, 36567), (45, 36573), (76, 36738), (77, 36750), (82, 36783), (83, 36789), (85, 36816), (95, 36876), (97, 36885), (104, 36954), (130, 37146),

Gene: Axumite_31 Start: 28728, Stop: 29333, Start Num: 38

Candidate Starts for Axumite_31:

(11, 28170), (14, 28272), (Start: 38 @28728 has 291 MA's), (48, 28770), (55, 28806), (68, 28884), (80, 28941), (86, 28998), (94, 29046), (101, 29103), (102, 29115), (110, 29154), (123, 29226), (124, 29253),

Gene: Badfish_38 Start: 35602, Stop: 36225, Start Num: 38

Candidate Starts for Badfish_38:

(Start: 30 @35560 has 1 MA's), (Start: 38 @35602 has 291 MA's), (46, 35641), (52, 35677), (55, 35692), (65, 35734), (66, 35758), (76, 35803), (82, 35848), (86, 35884), (93, 35932), (96, 35944), (105, 36025), (106, 36028),

Gene: Bae_36 Start: 36115, Stop: 36735, Start Num: 38

Candidate Starts for Bae_36:

(15, 35785), (21, 35938), (24, 36016), (Start: 30 @36073 has 1 MA's), (35, 36097), (Start: 38 @36115 has 291 MA's), (52, 36184), (91, 36436), (98, 36472), (104, 36529), (106, 36538), (114, 36577), (121, 36616), (130, 36721),

Gene: Banjo_37 Start: 35277, Stop: 35900, Start Num: 38

Candidate Starts for Banjo_37:

(Start: 30 @35235 has 1 MA's), (Start: 38 @35277 has 291 MA's), (46, 35316), (52, 35352), (55, 35367), (65, 35409), (66, 35433), (82, 35523), (86, 35559), (93, 35607), (96, 35619), (105, 35700), (106, 35703),

Gene: Basato_39 Start: 35856, Stop: 36479, Start Num: 38

Candidate Starts for Basato_39:

(Start: 30 @35814 has 1 MA's), (Start: 38 @35856 has 291 MA's), (46, 35895), (52, 35931), (55, 35946), (65, 35988), (66, 36012), (76, 36057), (82, 36102), (86, 36138), (93, 36186), (96, 36198), (105, 36279), (106, 36282),

Gene: BatteryCK_37 Start: 35196, Stop: 35819, Start Num: 38

Candidate Starts for BatteryCK_37:

(Start: 30 @35154 has 1 MA's), (Start: 38 @35196 has 291 MA's), (46, 35235), (52, 35271), (55, 35286), (65, 35328), (66, 35352), (76, 35397), (82, 35442), (86, 35478), (93, 35526), (96, 35538), (105, 35619), (106, 35622),

Gene: Beaglebox_37 Start: 35298, Stop: 35921, Start Num: 38

Candidate Starts for Beaglebox_37:

(Start: 30 @35256 has 1 MA's), (Start: 38 @35298 has 291 MA's), (46, 35337), (52, 35373), (55, 35388), (65, 35430), (66, 35454), (76, 35499), (82, 35544), (86, 35580), (93, 35628), (96, 35640), (105, 35721), (106, 35724),

Gene: BiggityBass_31 Start: 30988, Stop: 31584, Start Num: 38

Candidate Starts for BiggityBass_31:

(Start: 30 @30946 has 1 MA's), (Start: 38 @30988 has 291 MA's), (71, 31153), (85, 31255), (86, 31258), (91, 31297), (101, 31354), (102, 31366), (115, 31432), (123, 31477), (130, 31570),

Gene: BirdsNest_40 Start: 34530, Stop: 35153, Start Num: 38

Candidate Starts for BirdsNest_40:

(9, 33939), (Start: 30 @34488 has 1 MA's), (Start: 38 @34530 has 291 MA's), (47, 34575), (52, 34605), (65, 34662), (76, 34731), (102, 34932), (130, 35139),

Gene: Bishoperium_37 Start: 35286, Stop: 35909, Start Num: 38

Candidate Starts for Bishoperium_37:

(Start: 30 @35244 has 1 MA's), (Start: 38 @35286 has 291 MA's), (46, 35325), (52, 35361), (55, 35376), (65, 35418), (66, 35442), (82, 35532), (86, 35568), (93, 35616), (96, 35628), (105, 35709), (106, 35712),

Gene: BlackStallion_38 Start: 35588, Stop: 36211, Start Num: 38

Candidate Starts for BlackStallion_38:

(Start: 30 @35546 has 1 MA's), (Start: 38 @35588 has 291 MA's), (46, 35627), (52, 35663), (55, 35678), (65, 35720), (66, 35744), (76, 35789), (82, 35834), (86, 35870), (93, 35918), (96, 35930), (105, 36011), (106, 36014),

Gene: BlueHusk_38 Start: 35085, Stop: 35708, Start Num: 38

Candidate Starts for BlueHusk_38:

(Start: 30 @35043 has 1 MA's), (Start: 38 @35085 has 291 MA's), (46, 35124), (52, 35160), (55, 35175), (65, 35217), (66, 35241), (76, 35286), (82, 35331), (86, 35367), (93, 35415), (96, 35427), (105, 35508), (106, 35511),

Gene: Bluephacebaby_37 Start: 35283, Stop: 35906, Start Num: 38

Candidate Starts for Bluephacebaby_37:

(Start: 30 @35241 has 1 MA's), (Start: 38 @35283 has 291 MA's), (46, 35322), (52, 35358), (55, 35373), (65, 35415), (66, 35439), (76, 35484), (82, 35529), (86, 35565), (93, 35613), (96, 35625), (105, 35706), (106, 35709),

Gene: BobRoss2024_30 Start: 28667, Stop: 29320, Start Num: 30

Candidate Starts for BobRoss2024_30:

(Start: 30 @28667 has 1 MA's), (Start: 38 @28709 has 291 MA's), (48, 28757), (52, 28778), (67, 28865), (79, 28925), (86, 28985), (108, 29129), (109, 29135), (118, 29183), (120, 29195), (123, 29210), (132, 29315),

Gene: BobbyK_35 Start: 35783, Stop: 36535, Start Num: 22

Candidate Starts for BobbyK_35:

(Start: 20 @35741 has 1 MA's), (Start: 22 @35783 has 34 MA's), (26, 35828), (29, 35849), (32, 35873), (44, 35936), (45, 35942), (76, 36107), (77, 36119), (82, 36152), (83, 36158), (85, 36185), (95, 36245), (97, 36254), (104, 36323), (130, 36515),

Gene: Boehler_38 Start: 35589, Stop: 36212, Start Num: 38

Candidate Starts for Boehler_38:

(Start: 30 @35547 has 1 MA's), (Start: 38 @35589 has 291 MA's), (46, 35628), (52, 35664), (55, 35679), (65, 35721), (66, 35745), (82, 35835), (86, 35871), (93, 35919), (96, 35931), (105, 36012), (106, 36015),

Gene: Brilliant_38 Start: 35294, Stop: 35917, Start Num: 38

Candidate Starts for Brilliant_38:

(Start: 30 @35252 has 1 MA's), (Start: 38 @35294 has 291 MA's), (46, 35333), (52, 35369), (55, 35384), (65, 35426), (66, 35450), (76, 35495), (82, 35540), (86, 35576), (93, 35624), (96, 35636), (105, 35717), (106, 35720),

Gene: BrownCNA_36 Start: 36044, Stop: 36796, Start Num: 22

Candidate Starts for BrownCNA_36:

(Start: 20 @36002 has 1 MA's), (Start: 22 @36044 has 34 MA's), (26, 36089), (29, 36110), (32, 36134), (44, 36197), (45, 36203), (47, 36215), (53, 36254), (76, 36368), (77, 36380), (82, 36413), (83, 36419), (85, 36446), (95, 36506), (97, 36515), (104, 36584), (130, 36776),

Gene: Buckeye_38 Start: 35606, Stop: 36229, Start Num: 38

Candidate Starts for Buckeye_38:

(Start: 30 @35564 has 1 MA's), (Start: 38 @35606 has 291 MA's), (46, 35645), (52, 35681), (55, 35696), (65, 35738), (66, 35762), (76, 35807), (82, 35852), (86, 35888), (93, 35936), (96, 35948), (105, 36029), (106, 36032),

Gene: Burr_37 Start: 35283, Stop: 35906, Start Num: 38

Candidate Starts for Burr_37:

(Start: 30 @35241 has 1 MA's), (Start: 38 @35283 has 291 MA's), (46, 35322), (52, 35358), (55, 35373), (65, 35415), (66, 35439), (76, 35484), (82, 35529), (86, 35565), (93, 35613), (96, 35625), (105, 35706), (106, 35709),

Gene: CRB2_40 Start: 38230, Stop: 38997, Start Num: 22

Candidate Starts for CRB2_40:

(16, 38050), (Start: 22 @38230 has 34 MA's), (23, 38254), (25, 38275), (29, 38311), (33, 38341), (54, 38461), (82, 38617), (85, 38650), (92, 38701), (95, 38713), (96, 38716), (98, 38734), (104, 38791), (106, 38800), (130, 38983),

Gene: CaiB_33 Start: 30660, Stop: 31274, Start Num: 38

Candidate Starts for CaiB_33:

(Start: 30 @30618 has 1 MA's), (Start: 38 @30660 has 291 MA's), (43, 30675), (48, 30708), (52, 30729), (55, 30744), (81, 30897), (82, 30900), (108, 31083), (120, 31149), (123, 31164),

Gene: CamL_38 Start: 35584, Stop: 36207, Start Num: 38

Candidate Starts for CamL_38:

(Start: 30 @35542 has 1 MA's), (Start: 38 @35584 has 291 MA's), (46, 35623), (52, 35659), (55, 35674), (65, 35716), (66, 35740), (82, 35830), (86, 35866), (93, 35914), (96, 35926), (105, 36007), (106, 36010),

Gene: CampRoach_38 Start: 35574, Stop: 36197, Start Num: 38

Candidate Starts for CampRoach_38:

(Start: 30 @35532 has 1 MA's), (Start: 38 @35574 has 291 MA's), (46, 35613), (52, 35649), (55, 35664), (65, 35706), (66, 35730), (76, 35775), (82, 35820), (86, 35856), (93, 35904), (96, 35916), (105, 35997), (106, 36000),

Gene: Cannibal_38 Start: 35567, Stop: 36190, Start Num: 38

Candidate Starts for Cannibal_38:

(Start: 30 @35525 has 1 MA's), (Start: 38 @35567 has 291 MA's), (46, 35606), (52, 35642), (55, 35657), (65, 35699), (66, 35723), (76, 35768), (82, 35813), (86, 35849), (93, 35897), (96, 35909), (105, 35990), (106, 35993),

Gene: Carthage_36 Start: 34496, Stop: 35119, Start Num: 38

Candidate Starts for Carthage_36:

(Start: 30 @34454 has 1 MA's), (Start: 38 @34496 has 291 MA's), (46, 34535), (52, 34571), (55, 34586), (65, 34628), (76, 34697), (82, 34742), (86, 34778), (93, 34826), (96, 34838), (105, 34919), (106, 34922),

Gene: Chaelin_38 Start: 35281, Stop: 35904, Start Num: 38

Candidate Starts for Chaelin_38:

(Start: 30 @35239 has 1 MA's), (Start: 38 @35281 has 291 MA's), (46, 35320), (52, 35356), (55, 35371), (65, 35413), (66, 35437), (76, 35482), (82, 35527), (86, 35563), (93, 35611), (96, 35623), (105, 35704), (106, 35707),

Gene: Chah_39 Start: 35601, Stop: 36224, Start Num: 38

Candidate Starts for Chah_39:

(Start: 30 @35559 has 1 MA's), (Start: 38 @35601 has 291 MA's), (46, 35640), (52, 35676), (55, 35691), (65, 35733), (66, 35757), (76, 35802), (82, 35847), (86, 35883), (93, 35931), (96, 35943), (105, 36024), (106, 36027),

Gene: Charles1_38 Start: 35569, Stop: 36192, Start Num: 38

Candidate Starts for Charles1_38:

(Start: 30 @35527 has 1 MA's), (Start: 38 @35569 has 291 MA's), (46, 35608), (52, 35644), (55, 35659), (65, 35701), (66, 35725), (76, 35770), (82, 35815), (86, 35851), (93, 35899), (96, 35911), (105, 35992), (106, 35995),

Gene: CharlieGBrown_37 Start: 35159, Stop: 35782, Start Num: 38

Candidate Starts for CharlieGBrown_37:

(Start: 30 @35117 has 1 MA's), (Start: 38 @35159 has 291 MA's), (46, 35198), (52, 35234), (55, 35249), (65, 35291), (66, 35315), (76, 35360), (82, 35405), (86, 35441), (93, 35489), (96, 35501), (105, 35582), (106, 35585),

Gene: CharlottesWeb_31 Start: 28668, Stop: 29273, Start Num: 38

Candidate Starts for CharlottesWeb_31:

(11, 28110), (14, 28212), (Start: 38 @28668 has 291 MA's), (48, 28710), (52, 28731), (57, 28758), (68, 28824), (71, 28833), (80, 28881), (82, 28902), (86, 28938), (91, 28977), (94, 28986), (101, 29043), (102, 29055), (120, 29151), (125, 29196),

Gene: CheetO_38 Start: 35583, Stop: 36206, Start Num: 38

Candidate Starts for CheetO_38:

(Start: 30 @35541 has 1 MA's), (Start: 38 @35583 has 291 MA's), (46, 35622), (52, 35658), (55, 35673), (65, 35715), (66, 35739), (76, 35784), (82, 35829), (86, 35865), (93, 35913), (96, 35925), (105, 36006), (106, 36009),

Gene: Cher_37 Start: 35306, Stop: 35929, Start Num: 38

Candidate Starts for Cher_37:

(Start: 30 @35264 has 1 MA's), (Start: 38 @35306 has 291 MA's), (46, 35345), (52, 35381), (55, 35396), (65, 35438), (66, 35462), (76, 35507), (82, 35552), (86, 35588), (93, 35636), (96, 35648), (105, 35729), (106, 35732),

Gene: Childish_37 Start: 35309, Stop: 35932, Start Num: 38

Candidate Starts for Childish_37:

(Start: 30 @35267 has 1 MA's), (Start: 38 @35309 has 291 MA's), (46, 35348), (52, 35384), (55, 35399), (65, 35441), (66, 35465), (76, 35510), (82, 35555), (86, 35591), (93, 35639), (96, 35651), (105, 35732), (106, 35735),

Gene: Chorkpop_38 Start: 35305, Stop: 35928, Start Num: 38

Candidate Starts for Chorkpop_38:

(Start: 30 @35263 has 1 MA's), (Start: 38 @35305 has 291 MA's), (46, 35344), (52, 35380), (55, 35395), (65, 35437), (66, 35461), (76, 35506), (82, 35551), (86, 35587), (93, 35635), (96, 35647), (105, 35728), (106, 35731),

Gene: ChrisnMich_34 Start: 34744, Stop: 35496, Start Num: 22

Candidate Starts for ChrisnMich_34:

(10, 34318), (Start: 20 @34702 has 1 MA's), (Start: 22 @34744 has 34 MA's), (26, 34789), (29, 34810), (32, 34834), (45, 34903), (77, 35080), (85, 35146), (95, 35206), (97, 35215), (104, 35284), (130, 35476),

Gene: Chunky_38 Start: 35592, Stop: 36215, Start Num: 38

Candidate Starts for Chunky_38:

(Start: 30 @35550 has 1 MA's), (Start: 38 @35592 has 291 MA's), (46, 35631), (52, 35667), (55, 35682), (65, 35724), (66, 35748), (76, 35793), (82, 35838), (86, 35874), (93, 35922), (96, 35934), (105, 36015), (106, 36018),

Gene: Chute_37 Start: 35630, Stop: 36253, Start Num: 38

Candidate Starts for Chute_37:

(Start: 30 @35588 has 1 MA's), (Start: 38 @35630 has 291 MA's), (46, 35669), (52, 35705), (55, 35720), (65, 35762), (66, 35786), (76, 35831), (82, 35876), (86, 35912), (93, 35960), (96, 35972), (105, 36053), (106, 36056),

Gene: CloverMinnie_33 Start: 30558, Stop: 31214, Start Num: 30

Candidate Starts for CloverMinnie_33:

(Start: 30 @30558 has 1 MA's), (Start: 38 @30600 has 291 MA's), (43, 30615), (48, 30648), (52, 30669), (55, 30684), (81, 30837), (82, 30840), (108, 31023), (109, 31029), (120, 31089), (123, 31104),

Gene: Cobra_38 Start: 35590, Stop: 36213, Start Num: 38

Candidate Starts for Cobra_38:

(Start: 30 @35548 has 1 MA's), (Start: 38 @35590 has 291 MA's), (46, 35629), (52, 35665), (55, 35680), (65, 35722), (66, 35746), (76, 35791), (82, 35836), (86, 35872), (93, 35920), (96, 35932), (105, 36013), (106, 36016),

Gene: Colbert_38 Start: 35645, Stop: 36268, Start Num: 38

Candidate Starts for Colbert_38:

(Start: 30 @35603 has 1 MA's), (Start: 38 @35645 has 291 MA's), (46, 35684), (52, 35720), (55, 35735), (65, 35777), (76, 35846), (82, 35891), (86, 35927), (93, 35975), (96, 35987), (105, 36068), (106, 36071),

Gene: Coldpizza_34 Start: 33129, Stop: 33737, Start Num: 40

Candidate Starts for Coldpizza_34:

(14, 32709), (24, 33045), (Start: 30 @33090 has 1 MA's), (Start: 40 @33129 has 1 MA's), (52, 33192), (57, 33219), (66, 33273), (80, 33342), (82, 33363), (98, 33474), (102, 33516), (108, 33546), (110, 33555), (113, 33576), (115, 33582), (130, 33723),

Gene: Coletti_37 Start: 35630, Stop: 36253, Start Num: 38

Candidate Starts for Coletti_37:

(Start: 30 @35588 has 1 MA's), (Start: 38 @35630 has 291 MA's), (46, 35669), (52, 35705), (55, 35720), (65, 35762), (66, 35786), (76, 35831), (82, 35876), (86, 35912), (93, 35960), (96, 35972), (105, 36053), (106, 36056),

Gene: Cooper_35 Start: 34962, Stop: 35714, Start Num: 22

Candidate Starts for Cooper_35:

(Start: 20 @34920 has 1 MA's), (Start: 22 @34962 has 34 MA's), (26, 35007), (29, 35028), (32, 35052), (45, 35121), (77, 35298), (83, 35337), (85, 35364), (95, 35424), (104, 35502), (130, 35694),

Gene: Cornobble_37 Start: 35144, Stop: 35767, Start Num: 38

Candidate Starts for Cornobble_37:

(Start: 30 @35102 has 1 MA's), (Start: 38 @35144 has 291 MA's), (46, 35183), (52, 35219), (55, 35234), (65, 35276), (66, 35300), (76, 35345), (82, 35390), (86, 35426), (93, 35474), (96, 35486), (105, 35567), (106, 35570),

Gene: Cosmolli16_37 Start: 35294, Stop: 35917, Start Num: 38

Candidate Starts for Cosmolli16_37:

(Start: 30 @35252 has 1 MA's), (Start: 38 @35294 has 291 MA's), (46, 35333), (52, 35369), (55, 35384), (65, 35426), (66, 35450), (76, 35495), (82, 35540), (86, 35576), (93, 35624), (96, 35636), (105, 35717), (106, 35720),

Gene: Craff_38 Start: 35587, Stop: 36210, Start Num: 38

Candidate Starts for Craff_38:

(Start: 30 @35545 has 1 MA's), (Start: 38 @35587 has 291 MA's), (46, 35626), (52, 35662), (55, 35677), (65, 35719), (66, 35743), (76, 35788), (82, 35833), (86, 35869), (93, 35917), (96, 35929), (105, 36010), (106, 36013),

Gene: Crownjwl_38 Start: 35360, Stop: 35983, Start Num: 38

Candidate Starts for Crownjwl_38:

(Start: 30 @35318 has 1 MA's), (Start: 38 @35360 has 291 MA's), (46, 35399), (52, 35435), (55, 35450), (65, 35492), (66, 35516), (76, 35561), (82, 35606), (86, 35642), (93, 35690), (96, 35702), (105, 35783), (106, 35786),

Gene: DaddyDaniels_38 Start: 35278, Stop: 35901, Start Num: 38

Candidate Starts for DaddyDaniels_38:

(Start: 30 @35236 has 1 MA's), (Start: 38 @35278 has 291 MA's), (46, 35317), (52, 35353), (55, 35368), (65, 35410), (66, 35434), (76, 35479), (82, 35524), (86, 35560), (93, 35608), (96, 35620), (105, 35701), (106, 35704),

Gene: Daffy_38 Start: 35309, Stop: 35932, Start Num: 38

Candidate Starts for Daffy_38:

(Start: 30 @35267 has 1 MA's), (Start: 38 @35309 has 291 MA's), (46, 35348), (52, 35384), (55, 35399), (65, 35441), (66, 35465), (82, 35555), (86, 35591), (93, 35639), (96, 35651), (105, 35732), (106, 35735),

Gene: Daka_38 Start: 35583, Stop: 36206, Start Num: 38

Candidate Starts for Daka_38:

(Start: 30 @35541 has 1 MA's), (Start: 38 @35583 has 291 MA's), (46, 35622), (52, 35658), (55, 35673), (65, 35715), (66, 35739), (76, 35784), (82, 35829), (86, 35865), (93, 35913), (96, 35925), (105, 36006), (106, 36009),

Gene: Dati_38 Start: 35303, Stop: 35926, Start Num: 38

Candidate Starts for Dati_38:

(Start: 30 @35261 has 1 MA's), (Start: 38 @35303 has 291 MA's), (46, 35342), (52, 35378), (55, 35393), (65, 35435), (66, 35459), (76, 35504), (82, 35549), (86, 35585), (93, 35633), (96, 35645), (105, 35726), (106, 35729),

Gene: DelRivs_37 Start: 35304, Stop: 35927, Start Num: 38

Candidate Starts for DelRivs_37:

(Start: 30 @35262 has 1 MA's), (Start: 38 @35304 has 291 MA's), (46, 35343), (52, 35379), (55, 35394), (65, 35436), (66, 35460), (76, 35505), (82, 35550), (86, 35586), (93, 35634), (96, 35646), (105, 35727), (106, 35730),

Gene: Derpp_37 Start: 35148, Stop: 35771, Start Num: 38

Candidate Starts for Derpp_37:

(Start: 30 @35106 has 1 MA's), (Start: 38 @35148 has 291 MA's), (46, 35187), (52, 35223), (55, 35238), (65, 35280), (66, 35304), (76, 35349), (82, 35394), (86, 35430), (93, 35478), (96, 35490), (105, 35571), (106, 35574),

Gene: Dice_37 Start: 35283, Stop: 35906, Start Num: 38

Candidate Starts for Dice_37:

(Start: 30 @35241 has 1 MA's), (Start: 38 @35283 has 291 MA's), (46, 35322), (52, 35358), (55, 35373), (65, 35415), (66, 35439), (76, 35484), (82, 35529), (86, 35565), (93, 35613), (96, 35625), (105, 35706), (106, 35709),

Gene: DigitDog_37 Start: 35882, Stop: 36520, Start Num: 35

Candidate Starts for DigitDog_37:

(15, 35570), (21, 35723), (24, 35801), (Start: 30 @35858 has 1 MA's), (35, 35882), (Start: 38 @35900 has 291 MA's), (52, 35969), (86, 36176), (93, 36227), (96, 36239), (98, 36257), (104, 36314), (106, 36323), (114, 36362), (121, 36401), (130, 36506),

Gene: Dingo_38 Start: 35566, Stop: 36189, Start Num: 38

Candidate Starts for Dingo_38:

(Start: 30 @35524 has 1 MA's), (Start: 38 @35566 has 291 MA's), (46, 35605), (52, 35641), (55, 35656), (65, 35698), (66, 35722), (76, 35767), (82, 35812), (86, 35848), (93, 35896), (96, 35908), (105, 35989), (106, 35992),

Gene: Dione_37 Start: 35288, Stop: 35911, Start Num: 38

Candidate Starts for Dione_37:

(Start: 30 @35246 has 1 MA's), (Start: 38 @35288 has 291 MA's), (46, 35327), (52, 35363), (55, 35378), (65, 35420), (66, 35444), (76, 35489), (82, 35534), (86, 35570), (93, 35618), (96, 35630), (105, 35711), (106, 35714),

Gene: DirtJuice_38 Start: 35572, Stop: 36195, Start Num: 38

Candidate Starts for DirtJuice_38:

(Start: 30 @35530 has 1 MA's), (Start: 38 @35572 has 291 MA's), (46, 35611), (52, 35647), (55, 35662), (65, 35704), (66, 35728), (76, 35773), (82, 35818), (86, 35854), (93, 35902), (96, 35914), (105, 35995), (106, 35998),

Gene: Doddsville_38 Start: 35302, Stop: 35925, Start Num: 38

Candidate Starts for Doddsville_38:

(Start: 30 @35260 has 1 MA's), (Start: 38 @35302 has 291 MA's), (46, 35341), (52, 35377), (55, 35392), (65, 35434), (66, 35458), (76, 35503), (82, 35548), (86, 35584), (93, 35632), (96, 35644), (105, 35725), (106, 35728),

Gene: DoesntMatter_38 Start: 35575, Stop: 36198, Start Num: 38

Candidate Starts for DoesntMatter_38:

(Start: 30 @35533 has 1 MA's), (Start: 38 @35575 has 291 MA's), (46, 35614), (52, 35650), (55, 35665), (65, 35707), (66, 35731), (76, 35776), (82, 35821), (86, 35857), (93, 35905), (96, 35917), (105, 35998), (106, 36001),

Gene: DonSanchon_37 Start: 35282, Stop: 35905, Start Num: 38

Candidate Starts for DonSanchon_37:

(Start: 30 @35240 has 1 MA's), (Start: 38 @35282 has 291 MA's), (46, 35321), (52, 35357), (55, 35372), (65, 35414), (66, 35438), (76, 35483), (82, 35528), (86, 35564), (93, 35612), (96, 35624), (105, 35705), (106, 35708),

Gene: Donny_37 Start: 36193, Stop: 36813, Start Num: 38

Candidate Starts for Donny_37:

(15, 35863), (21, 36016), (24, 36094), (Start: 30 @36151 has 1 MA's), (35, 36175), (Start: 38 @36193 has 291 MA's), (52, 36262), (70, 36358), (82, 36433), (86, 36469), (91, 36514), (96, 36532), (98, 36550), (104, 36607), (106, 36616), (114, 36655), (121, 36694), (130, 36799),

Gene: DuchessDung_36 Start: 34439, Stop: 35062, Start Num: 38

Candidate Starts for DuchessDung_36:

(Start: 30 @34397 has 1 MA's), (Start: 38 @34439 has 291 MA's), (46, 34478), (52, 34514), (55, 34529), (65, 34571), (66, 34595), (76, 34640), (82, 34685), (86, 34721), (93, 34769), (96, 34781), (105, 34862), (106, 34865),

Gene: Duggie_37 Start: 35304, Stop: 35927, Start Num: 38

Candidate Starts for Duggie_37:

(Start: 30 @35262 has 1 MA's), (Start: 38 @35304 has 291 MA's), (46, 35343), (52, 35379), (55, 35394), (65, 35436), (66, 35460), (76, 35505), (82, 35550), (86, 35586), (93, 35634), (96, 35646), (105, 35727), (106, 35730),

Gene: Durga_38 Start: 35602, Stop: 36225, Start Num: 38

Candidate Starts for Durga_38:

(Start: 30 @35560 has 1 MA's), (Start: 38 @35602 has 291 MA's), (46, 35641), (52, 35677), (55, 35692), (65, 35734), (66, 35758), (76, 35803), (82, 35848), (86, 35884), (93, 35932), (96, 35944), (105, 36025), (106, 36028),

Gene: EastView9101_36 Start: 35843, Stop: 36463, Start Num: 38

Candidate Starts for EastView9101_36:

(15, 35513), (21, 35666), (24, 35744), (Start: 30 @35801 has 1 MA's), (35, 35825), (Start: 38 @35843 has 291 MA's), (52, 35912), (70, 36008), (82, 36083), (86, 36119), (91, 36164), (96, 36182), (98, 36200), (104, 36257), (106, 36266), (114, 36305), (121, 36344), (130, 36449),

Gene: Emiris_38 Start: 35573, Stop: 36196, Start Num: 38

Candidate Starts for Emiris_38:

(Start: 30 @35531 has 1 MA's), (Start: 38 @35573 has 291 MA's), (46, 35612), (52, 35648), (55, 35663), (65, 35705), (66, 35729), (76, 35774), (82, 35819), (86, 35855), (93, 35903), (96, 35915), (105, 35996), (106, 35999),

Gene: EmpTee_38 Start: 35582, Stop: 36205, Start Num: 38

Candidate Starts for EmpTee_38:

(Start: 30 @35540 has 1 MA's), (Start: 38 @35582 has 291 MA's), (46, 35621), (52, 35657), (55, 35672), (65, 35714), (76, 35783), (82, 35828), (86, 35864), (93, 35912), (96, 35924), (105, 36005), (106, 36008),

Gene: Epah_34 Start: 34752, Stop: 35504, Start Num: 22

Candidate Starts for Epah_34:

(Start: 20 @34710 has 1 MA's), (Start: 22 @34752 has 34 MA's), (26, 34797), (29, 34818), (32, 34842), (45, 34911), (47, 34923), (77, 35088), (85, 35154), (95, 35214), (97, 35223), (104, 35292), (113, 35337), (130, 35484),

Gene: Eremos_38 Start: 35581, Stop: 36204, Start Num: 38

Candidate Starts for Eremos_38:

(Start: 30 @35539 has 1 MA's), (Start: 38 @35581 has 291 MA's), (46, 35620), (52, 35656), (55, 35671), (65, 35713), (66, 35737), (76, 35782), (82, 35827), (86, 35863), (93, 35911), (96, 35923), (105, 36004), (106, 36007),

Gene: Etaye_38 Start: 35572, Stop: 36195, Start Num: 38

Candidate Starts for Etaye_38:

(Start: 30 @35530 has 1 MA's), (Start: 38 @35572 has 291 MA's), (46, 35611), (52, 35647), (55, 35662), (65, 35704), (66, 35728), (76, 35773), (82, 35818), (86, 35854), (93, 35902), (96, 35914), (105, 35995), (106, 35998),

Gene: Eugenia_38 Start: 35591, Stop: 36214, Start Num: 38

Candidate Starts for Eugenia_38:

(Start: 30 @35549 has 1 MA's), (Start: 38 @35591 has 291 MA's), (46, 35630), (52, 35666), (55, 35681), (65, 35723), (66, 35747), (76, 35792), (82, 35837), (86, 35873), (93, 35921), (96, 35933), (105, 36014), (106, 36017),

Gene: Evaa_31 Start: 29501, Stop: 30109, Start Num: 40

Candidate Starts for Evaa_31:

(Start: 40 @29501 has 1 MA's), (52, 29564), (56, 29588), (76, 29690), (82, 29735), (85, 29768), (88, 29789), (102, 29888), (108, 29918), (110, 29927), (111, 29936), (117, 29969), (119, 29981), (130, 30095),

Gene: Fanaw_34 Start: 35449, Stop: 36201, Start Num: 22

Candidate Starts for Fanaw_34:

(Start: 20 @35407 has 1 MA's), (Start: 22 @35449 has 34 MA's), (26, 35494), (29, 35515), (32, 35539), (44, 35602), (45, 35608), (76, 35773), (77, 35785), (82, 35818), (83, 35824), (85, 35851), (95, 35911), (97, 35920), (104, 35989), (130, 36181),

Gene: Fang_38 Start: 35595, Stop: 36218, Start Num: 38

Candidate Starts for Fang_38:

(Start: 30 @35553 has 1 MA's), (Start: 38 @35595 has 291 MA's), (46, 35634), (52, 35670), (55, 35685), (65, 35727), (66, 35751), (76, 35796), (82, 35841), (86, 35877), (93, 35925), (96, 35937), (105, 36018), (106, 36021),

Gene: FluffyNinja_38 Start: 35588, Stop: 36211, Start Num: 38

Candidate Starts for FluffyNinja_38:

(Start: 30 @35546 has 1 MA's), (Start: 38 @35588 has 291 MA's), (46, 35627), (52, 35663), (55, 35678), (65, 35720), (66, 35744), (76, 35789), (82, 35834), (86, 35870), (93, 35918), (96, 35930),

(105, 36011), (106, 36014),

Gene: Fortunato_35 Start: 35735, Stop: 36529, Start Num: 20

Candidate Starts for Fortunato_35:

(Start: 20 @35735 has 1 MA's), (Start: 22 @35777 has 34 MA's), (26, 35822), (29, 35843), (32, 35867), (44, 35930), (45, 35936), (76, 36101), (77, 36113), (82, 36146), (83, 36152), (85, 36179), (95, 36239), (97, 36248), (98, 36260), (104, 36317), (130, 36509),

Gene: Fozzie_37 Start: 35604, Stop: 36227, Start Num: 38

Candidate Starts for Fozzie_37:

(Start: 30 @35562 has 1 MA's), (Start: 38 @35604 has 291 MA's), (46, 35643), (52, 35679), (55, 35694), (65, 35736), (66, 35760), (76, 35805), (82, 35850), (86, 35886), (93, 35934), (96, 35946), (105, 36027), (106, 36030),

Gene: Frankicide_38 Start: 35600, Stop: 36223, Start Num: 38

Candidate Starts for Frankicide_38:

(Start: 30 @35558 has 1 MA's), (Start: 38 @35600 has 291 MA's), (46, 35639), (52, 35675), (55, 35690), (65, 35732), (66, 35756), (76, 35801), (82, 35846), (86, 35882), (93, 35930), (96, 35942), (105, 36023), (106, 36026),

Gene: Frederick_35 Start: 35783, Stop: 36535, Start Num: 22

Candidate Starts for Frederick_35:

(Start: 20 @35741 has 1 MA's), (Start: 22 @35783 has 34 MA's), (26, 35828), (29, 35849), (32, 35873), (44, 35936), (45, 35942), (47, 35954), (53, 35993), (76, 36107), (77, 36119), (82, 36152), (83, 36158), (85, 36185), (95, 36245), (97, 36254), (104, 36323), (130, 36515),

Gene: Fresco_31 Start: 28728, Stop: 29333, Start Num: 38

Candidate Starts for Fresco_31:

(11, 28170), (14, 28272), (Start: 38 @28728 has 291 MA's), (48, 28770), (55, 28806), (68, 28884), (80, 28941), (86, 28998), (94, 29046), (101, 29103), (102, 29115), (110, 29154), (123, 29226), (124, 29253),

Gene: Freya_37 Start: 35279, Stop: 35902, Start Num: 38

Candidate Starts for Freya_37:

(Start: 30 @35237 has 1 MA's), (Start: 38 @35279 has 291 MA's), (46, 35318), (52, 35354), (55, 35369), (65, 35411), (66, 35435), (76, 35480), (82, 35525), (86, 35561), (93, 35609), (96, 35621), (105, 35702), (106, 35705),

Gene: FriarPreacher_38 Start: 35606, Stop: 36229, Start Num: 38

Candidate Starts for FriarPreacher_38:

(Start: 30 @35564 has 1 MA's), (Start: 38 @35606 has 291 MA's), (46, 35645), (52, 35681), (55, 35696), (65, 35738), (66, 35762), (76, 35807), (82, 35852), (86, 35888), (93, 35936), (96, 35948), (105, 36029), (106, 36032),

Gene: Fringe_38 Start: 35571, Stop: 36194, Start Num: 38

Candidate Starts for Fringe_38:

(Start: 30 @35529 has 1 MA's), (Start: 38 @35571 has 291 MA's), (46, 35610), (52, 35646), (55, 35661), (65, 35703), (66, 35727), (82, 35817), (86, 35853), (93, 35901), (96, 35913), (105, 35994), (106, 35997),

Gene: FugateOSU_37 Start: 35284, Stop: 35907, Start Num: 38

Candidate Starts for FugateOSU_37:

(Start: 30 @35242 has 1 MA's), (Start: 38 @35284 has 291 MA's), (46, 35323), (52, 35359), (55, 35374), (65, 35416), (66, 35440), (76, 35485), (82, 35530), (86, 35566), (93, 35614), (96, 35626), (105, 35707), (106, 35710),

Gene: Funsized_40 Start: 38355, Stop: 39110, Start Num: 22

Candidate Starts for Funsized_40:

(10, 37923), (12, 38028), (16, 38181), (17, 38259), (Start: 20 @38316 has 1 MA's), (Start: 22 @38355 has 34 MA's), (23, 38376), (29, 38433), (Start: 30 @38448 has 1 MA's), (32, 38457), (39, 38496), (45, 38520), (51, 38553), (54, 38574), (67, 38646), (76, 38685), (77, 38697), (82, 38730), (83, 38736), (95, 38826), (102, 38889), (104, 38904), (106, 38913), (120, 38985), (123, 39000), (130, 39096),

Gene: Gareth_37 Start: 35287, Stop: 35910, Start Num: 38

Candidate Starts for Gareth_37:

(Start: 30 @35245 has 1 MA's), (Start: 38 @35287 has 291 MA's), (46, 35326), (52, 35362), (55, 35377), (65, 35419), (66, 35443), (76, 35488), (82, 35533), (86, 35569), (93, 35617), (96, 35629), (105, 35710), (106, 35713),

Gene: GeneCoco_38 Start: 35596, Stop: 36219, Start Num: 38

Candidate Starts for GeneCoco_38:

(Start: 30 @35554 has 1 MA's), (Start: 38 @35596 has 291 MA's), (46, 35635), (52, 35671), (55, 35686), (65, 35728), (66, 35752), (76, 35797), (82, 35842), (86, 35878), (93, 35926), (96, 35938), (105, 36019), (106, 36022),

Gene: GinPorsche_34 Start: 34752, Stop: 35504, Start Num: 22

Candidate Starts for GinPorsche_34:

(Start: 20 @34710 has 1 MA's), (Start: 22 @34752 has 34 MA's), (26, 34797), (29, 34818), (32, 34842), (45, 34911), (47, 34923), (77, 35088), (85, 35154), (95, 35214), (97, 35223), (104, 35292), (113, 35337), (130, 35484),

Gene: Giraffe_38 Start: 35290, Stop: 35913, Start Num: 38

Candidate Starts for Giraffe_38:

(Start: 30 @35248 has 1 MA's), (Start: 38 @35290 has 291 MA's), (46, 35329), (52, 35365), (55, 35380), (65, 35422), (66, 35446), (82, 35536), (86, 35572), (93, 35620), (96, 35632), (105, 35713), (106, 35716),

Gene: Gophee_38 Start: 35573, Stop: 36196, Start Num: 38

Candidate Starts for Gophee_38:

(Start: 30 @35531 has 1 MA's), (Start: 38 @35573 has 291 MA's), (46, 35612), (52, 35648), (55, 35663), (65, 35705), (66, 35729), (82, 35819), (86, 35855), (93, 35903), (96, 35915), (105, 35996), (106, 35999),

Gene: Grand2040_37 Start: 35305, Stop: 35928, Start Num: 38

Candidate Starts for Grand2040_37:

(Start: 30 @35263 has 1 MA's), (Start: 38 @35305 has 291 MA's), (46, 35344), (52, 35380), (55, 35395), (65, 35437), (76, 35506), (82, 35551), (86, 35587), (93, 35635), (96, 35647), (105, 35728), (106, 35731),

Gene: Gwilliam_38 Start: 35585, Stop: 36208, Start Num: 38

Candidate Starts for Gwilliam_38:

(Start: 30 @35543 has 1 MA's), (Start: 38 @35585 has 291 MA's), (46, 35624), (52, 35660), (55, 35675), (65, 35717), (66, 35741), (76, 35786), (82, 35831), (86, 35867), (93, 35915), (96, 35927), (105, 36008), (106, 36011),

Gene: Gyarad_0038 Start: 35587, Stop: 36210, Start Num: 38

Candidate Starts for Gyarad_0038:

(Start: 30 @35545 has 1 MA's), (Start: 38 @35587 has 291 MA's), (46, 35626), (52, 35662), (55, 35677), (65, 35719), (66, 35743), (76, 35788), (82, 35833), (86, 35869), (93, 35917), (96, 35929), (105, 36010), (106, 36013),

Gene: HSavage_38 Start: 35591, Stop: 36214, Start Num: 38

Candidate Starts for HSavage_38:

(Start: 30 @35549 has 1 MA's), (Start: 38 @35591 has 291 MA's), (46, 35630), (52, 35666), (55, 35681), (65, 35723), (66, 35747), (76, 35792), (82, 35837), (86, 35873), (93, 35921), (96, 35933), (105, 36014), (106, 36017),

Gene: Haimas_38 Start: 35582, Stop: 36205, Start Num: 38

Candidate Starts for Haimas_38:

(Start: 30 @35540 has 1 MA's), (Start: 38 @35582 has 291 MA's), (46, 35621), (52, 35657), (55, 35672), (65, 35714), (66, 35738), (76, 35783), (82, 35828), (86, 35864), (93, 35912), (96, 35924), (105, 36005), (106, 36008),

Gene: Haleema_37 Start: 35305, Stop: 35928, Start Num: 38

Candidate Starts for Haleema_37:

(Start: 30 @35263 has 1 MA's), (Start: 38 @35305 has 291 MA's), (46, 35344), (52, 35380), (55, 35395), (65, 35437), (66, 35461), (76, 35506), (82, 35551), (86, 35587), (93, 35635), (96, 35647), (105, 35728), (106, 35731),

Gene: Hally898_34 Start: 34764, Stop: 35516, Start Num: 22

Candidate Starts for Hally898_34:

(Start: 20 @34722 has 1 MA's), (Start: 22 @34764 has 34 MA's), (26, 34809), (29, 34830), (32, 34854), (45, 34923), (47, 34935), (77, 35100), (85, 35166), (95, 35226), (97, 35235), (104, 35304), (113, 35349), (130, 35496),

Gene: Hamish_38 Start: 35574, Stop: 36197, Start Num: 38

Candidate Starts for Hamish_38:

(Start: 30 @35532 has 1 MA's), (Start: 38 @35574 has 291 MA's), (46, 35613), (52, 35649), (55, 35664), (65, 35706), (66, 35730), (76, 35775), (82, 35820), (86, 35856), (93, 35904), (96, 35916), (105, 35997), (106, 36000),

Gene: Hangman_35 Start: 35775, Stop: 36527, Start Num: 22

Candidate Starts for Hangman_35:

(Start: 20 @35733 has 1 MA's), (Start: 22 @35775 has 34 MA's), (26, 35820), (29, 35841), (32, 35865), (44, 35928), (45, 35934), (76, 36099), (77, 36111), (82, 36144), (83, 36150), (85, 36177), (95, 36237), (97, 36246), (104, 36315), (130, 36507),

Gene: Hartsy_38 Start: 35625, Stop: 36248, Start Num: 38

Candidate Starts for Hartsy_38:

(Start: 30 @35583 has 1 MA's), (Start: 38 @35625 has 291 MA's), (46, 35664), (52, 35700), (55, 35715), (65, 35757), (66, 35781), (76, 35826), (82, 35871), (86, 35907), (93, 35955), (96, 35967), (105, 36048), (106, 36051),

Gene: Harvey_38 Start: 35600, Stop: 36223, Start Num: 38

Candidate Starts for Harvey_38:

(Start: 30 @35558 has 1 MA's), (Start: 38 @35600 has 291 MA's), (46, 35639), (52, 35675), (55, 35690), (65, 35732), (66, 35756), (76, 35801), (82, 35846), (86, 35882), (93, 35930), (96, 35942), (105, 36023), (106, 36026),

Gene: Hashim76_42 Start: 35012, Stop: 35635, Start Num: 38

Candidate Starts for Hashim76_42:

(9, 34421), (Start: 30 @34970 has 1 MA's), (Start: 38 @35012 has 291 MA's), (47, 35057), (52, 35087), (65, 35144), (76, 35213), (92, 35339), (102, 35414), (123, 35525), (130, 35621),

Gene: Heath_34 Start: 35382, Stop: 36134, Start Num: 22

Candidate Starts for Heath_34:

(Start: 20 @35340 has 1 MA's), (Start: 22 @35382 has 34 MA's), (29, 35448), (32, 35472), (44, 35535), (45, 35541), (76, 35706), (77, 35718), (82, 35751), (83, 35757), (85, 35784), (95, 35844), (97, 35853), (104, 35922), (130, 36114),

Gene: Held_38 Start: 35289, Stop: 35912, Start Num: 38

Candidate Starts for Held_38:

(Start: 30 @35247 has 1 MA's), (Start: 38 @35289 has 291 MA's), (46, 35328), (52, 35364), (55, 35379), (65, 35421), (66, 35445), (82, 35535), (86, 35571), (93, 35619), (96, 35631), (105, 35712), (106, 35715),

Gene: HenryJackson_37 Start: 35305, Stop: 35928, Start Num: 38

Candidate Starts for HenryJackson_37:

(Start: 30 @35263 has 1 MA's), (Start: 38 @35305 has 291 MA's), (46, 35344), (52, 35380), (55, 35395), (65, 35437), (66, 35461), (76, 35506), (82, 35551), (86, 35587), (93, 35635), (96, 35647), (105, 35728), (106, 35731),

Gene: Hertubise_38 Start: 35596, Stop: 36219, Start Num: 38

Candidate Starts for Hertubise_38:

(Start: 30 @35554 has 1 MA's), (Start: 38 @35596 has 291 MA's), (46, 35635), (52, 35671), (55, 35686), (65, 35728), (66, 35752), (76, 35797), (82, 35842), (86, 35878), (93, 35926), (96, 35938), (105, 36019), (106, 36022),

Gene: Hetaeria_38 Start: 35598, Stop: 36221, Start Num: 38

Candidate Starts for Hetaeria_38:

(Start: 30 @35556 has 1 MA's), (Start: 38 @35598 has 291 MA's), (46, 35637), (52, 35673), (55, 35688), (65, 35730), (66, 35754), (76, 35799), (82, 35844), (86, 35880), (93, 35928), (96, 35940), (105, 36021), (106, 36024),

Gene: HighStump_37 Start: 35288, Stop: 35911, Start Num: 38

Candidate Starts for HighStump_37:

(Start: 30 @35246 has 1 MA's), (Start: 38 @35288 has 291 MA's), (46, 35327), (52, 35363), (55, 35378), (65, 35420), (66, 35444), (76, 35489), (82, 35534), (86, 35570), (93, 35618), (96, 35630), (105, 35711), (106, 35714),

Gene: Hocus_37 Start: 35297, Stop: 35920, Start Num: 38

Candidate Starts for Hocus_37:

(Start: 30 @35255 has 1 MA's), (Start: 38 @35297 has 291 MA's), (46, 35336), (52, 35372), (55, 35387), (65, 35429), (66, 35453), (76, 35498), (82, 35543), (86, 35579), (93, 35627), (96, 35639), (105, 35720), (106, 35723),

Gene: Horchata_38 Start: 35576, Stop: 36199, Start Num: 38

Candidate Starts for Horchata_38:

(Start: 30 @35534 has 1 MA's), (Start: 38 @35576 has 291 MA's), (46, 35615), (52, 35651), (55, 35666), (65, 35708), (66, 35732), (76, 35777), (82, 35822), (86, 35858), (93, 35906), (96, 35918), (105, 35999), (106, 36002),

Gene: Hydro_35 Start: 35792, Stop: 36544, Start Num: 22

Candidate Starts for Hydro_35:

(Start: 20 @35750 has 1 MA's), (Start: 22 @35792 has 34 MA's), (26, 35837), (29, 35858), (32, 35882), (44, 35945), (45, 35951), (76, 36116), (77, 36128), (82, 36161), (83, 36167), (85, 36194), (95, 36254), (97, 36263), (104, 36332), (130, 36524),

Gene: ImtiyazSitla_37 Start: 35139, Stop: 35762, Start Num: 38

Candidate Starts for ImtiyazSitla_37:

(Start: 30 @35097 has 1 MA's), (Start: 38 @35139 has 291 MA's), (46, 35178), (52, 35214), (55, 35229), (65, 35271), (66, 35295), (76, 35340), (82, 35385), (86, 35421), (93, 35469), (96, 35481), (105, 35562), (106, 35565),

Gene: Imvubu_31 Start: 32479, Stop: 33240, Start Num: 22

Candidate Starts for Imvubu_31:

(16, 32311), (18, 32428), (Start: 22 @32479 has 34 MA's), (23, 32500), (29, 32557), (Start: 30 @32572 has 1 MA's), (33, 32587), (37, 32614), (44, 32644), (45, 32650), (54, 32704), (64, 32737), (67, 32776), (70, 32785), (76, 32815), (82, 32860), (85, 32893), (89, 32920), (95, 32956), (102, 33019), (104, 33034), (120, 33115), (123, 33130), (130, 33226),

Gene: Inchworm_38 Start: 35574, Stop: 36197, Start Num: 38

Candidate Starts for Inchworm_38:

(Start: 30 @35532 has 1 MA's), (Start: 38 @35574 has 291 MA's), (46, 35613), (52, 35649), (55, 35664), (65, 35706), (66, 35730), (76, 35775), (82, 35820), (86, 35856), (93, 35904), (96, 35916), (105, 35997), (106, 36000),

Gene: Indlovu_36 Start: 34997, Stop: 35767, Start Num: 22

Candidate Starts for Indlovu_36:

(Start: 22 @34997 has 34 MA's), (29, 35075), (33, 35105), (37, 35132), (44, 35171), (62, 35258), (72, 35327), (76, 35342), (82, 35387), (86, 35423), (92, 35471), (95, 35483), (98, 35504), (102, 35546), (130, 35753),

Gene: Inverness_38 Start: 35588, Stop: 36211, Start Num: 38

Candidate Starts for Inverness_38:

(Start: 30 @35546 has 1 MA's), (Start: 38 @35588 has 291 MA's), (46, 35627), (52, 35663), (55, 35678), (65, 35720), (66, 35744), (76, 35789), (82, 35834), (86, 35870), (93, 35918), (96, 35930), (105, 36011), (106, 36014),

Gene: Iridoclysis_38 Start: 35568, Stop: 36191, Start Num: 38

Candidate Starts for Iridoclysis_38:

(Start: 30 @35526 has 1 MA's), (Start: 38 @35568 has 291 MA's), (46, 35607), (52, 35643), (55, 35658), (65, 35700), (66, 35724), (76, 35769), (82, 35814), (86, 35850), (93, 35898), (96, 35910), (105, 35991), (106, 35994),

Gene: IsaacEli_38 Start: 35592, Stop: 36215, Start Num: 38

Candidate Starts for IsaacEli_38:

(Start: 30 @35550 has 1 MA's), (Start: 38 @35592 has 291 MA's), (46, 35631), (52, 35667), (55, 35682), (65, 35724), (66, 35748), (76, 35793), (82, 35838), (86, 35874), (93, 35922), (96, 35934), (105, 36015), (106, 36018),

Gene: JAMaL_35 Start: 35963, Stop: 36715, Start Num: 22

Candidate Starts for JAMaL_35:

(Start: 20 @35921 has 1 MA's), (Start: 22 @35963 has 34 MA's), (26, 36008), (29, 36029), (32, 36053), (45, 36122), (77, 36299), (85, 36365), (95, 36425), (97, 36434), (104, 36503), (130, 36695),

Gene: JDog_37 Start: 35305, Stop: 35928, Start Num: 38

Candidate Starts for JDog_37:

(Start: 30 @35263 has 1 MA's), (Start: 38 @35305 has 291 MA's), (46, 35344), (52, 35380), (55, 35395), (65, 35437), (66, 35461), (76, 35506), (82, 35551), (86, 35587), (93, 35635), (96, 35647), (105, 35728), (106, 35731),

Gene: JacAttac_38 Start: 35574, Stop: 36197, Start Num: 38

Candidate Starts for JacAttac_38:

(Start: 30 @35532 has 1 MA's), (Start: 38 @35574 has 291 MA's), (46, 35613), (52, 35649), (55, 35664), (65, 35706), (66, 35730), (76, 35775), (82, 35820), (86, 35856), (93, 35904), (96, 35916), (105, 35997), (106, 36000),

Gene: JaguarMi_35 Start: 35257, Stop: 36009, Start Num: 22

Candidate Starts for JaguarMi_35:

(Start: 20 @35215 has 1 MA's), (Start: 22 @35257 has 34 MA's), (26, 35302), (29, 35323), (32, 35347), (44, 35410), (45, 35416), (60, 35491), (76, 35581), (77, 35593), (82, 35626), (83, 35632), (85, 35659), (95, 35719), (97, 35728), (102, 35782), (104, 35797), (130, 35989),

Gene: JakeO_37 Start: 35307, Stop: 35930, Start Num: 38

Candidate Starts for JakeO_37:

(Start: 30 @35265 has 1 MA's), (Start: 38 @35307 has 291 MA's), (46, 35346), (52, 35382), (55, 35397), (65, 35439), (66, 35463), (76, 35508), (82, 35553), (86, 35589), (93, 35637), (96, 35649), (105, 35730), (106, 35733),

Gene: JangoPhett_38 Start: 35576, Stop: 36199, Start Num: 38

Candidate Starts for JangoPhett_38:

(Start: 30 @35534 has 1 MA's), (Start: 38 @35576 has 291 MA's), (46, 35615), (52, 35651), (55, 35666), (65, 35708), (66, 35732), (76, 35777), (82, 35822), (86, 35858), (93, 35906), (96, 35918), (105, 35999), (106, 36002),

Gene: Jillium_37 Start: 35298, Stop: 35921, Start Num: 38

Candidate Starts for Jillium_37:

(Start: 30 @35256 has 1 MA's), (Start: 38 @35298 has 291 MA's), (46, 35337), (52, 35373), (55, 35388), (65, 35430), (66, 35454), (76, 35499), (82, 35544), (86, 35580), (93, 35628), (96, 35640), (105, 35721), (106, 35724),

Gene: Jiminy_37 Start: 35142, Stop: 35765, Start Num: 38

Candidate Starts for Jiminy_37:

(Start: 30 @35100 has 1 MA's), (Start: 38 @35142 has 291 MA's), (46, 35181), (52, 35217), (55, 35232), (65, 35274), (66, 35298), (76, 35343), (82, 35388), (86, 35424), (93, 35472), (96, 35484), (105, 35565), (106, 35568),

Gene: Jiraiya_38 Start: 35295, Stop: 35918, Start Num: 38

Candidate Starts for Jiraiya_38:

(Start: 30 @35253 has 1 MA's), (Start: 38 @35295 has 291 MA's), (46, 35334), (52, 35370), (55, 35385), (65, 35427), (66, 35451), (76, 35496), (82, 35541), (86, 35577), (93, 35625), (96, 35637), (105, 35718), (106, 35721),

Gene: KLUcky39_38 Start: 35586, Stop: 36209, Start Num: 38

Candidate Starts for KLUcky39_38:

(Start: 30 @35544 has 1 MA's), (Start: 38 @35586 has 291 MA's), (46, 35625), (52, 35661), (55, 35676), (65, 35718), (66, 35742), (76, 35787), (82, 35832), (86, 35868), (93, 35916), (96, 35928), (105, 36009), (106, 36012),

Gene: Kahve_37 Start: 35302, Stop: 35925, Start Num: 38

Candidate Starts for Kahve_37:

(Start: 30 @35260 has 1 MA's), (Start: 38 @35302 has 291 MA's), (46, 35341), (52, 35377), (55, 35392), (65, 35434), (66, 35458), (76, 35503), (82, 35548), (86, 35584), (93, 35632), (96, 35644), (105, 35725), (106, 35728),

Gene: Kailash_38 Start: 35640, Stop: 36263, Start Num: 38

Candidate Starts for Kailash_38:

(Start: 30 @35598 has 1 MA's), (Start: 38 @35640 has 291 MA's), (46, 35679), (52, 35715), (55, 35730), (65, 35772), (66, 35796), (76, 35841), (82, 35886), (86, 35922), (93, 35970), (96, 35982), (105, 36063), (106, 36066),

Gene: KarasumaRum_39 Start: 36342, Stop: 36962, Start Num: 38

Candidate Starts for KarasumaRum_39:

(15, 36012), (21, 36165), (24, 36243), (Start: 30 @36300 has 1 MA's), (35, 36324), (Start: 38 @36342 has 291 MA's), (52, 36411), (86, 36618), (92, 36666), (93, 36669), (96, 36681), (98, 36699), (104, 36756), (106, 36765), (114, 36804), (121, 36843), (130, 36948),

Gene: Katniss_38 Start: 35601, Stop: 36224, Start Num: 38

Candidate Starts for Katniss_38:

(Start: 30 @35559 has 1 MA's), (Start: 38 @35601 has 291 MA's), (46, 35640), (52, 35676), (55, 35691), (65, 35733), (66, 35757), (76, 35802), (82, 35847), (86, 35883), (93, 35931), (96, 35943), (105, 36024), (106, 36027),

Gene: Keitherie_38 Start: 35639, Stop: 36262, Start Num: 38

Candidate Starts for Keitherie_38:

(Start: 30 @35597 has 1 MA's), (Start: 38 @35639 has 291 MA's), (46, 35678), (52, 35714), (55, 35729), (65, 35771), (66, 35795), (76, 35840), (82, 35885), (86, 35921), (93, 35969), (96, 35981), (105, 36062), (106, 36065),

Gene: Kikipoo_38 Start: 35592, Stop: 36215, Start Num: 38

Candidate Starts for Kikipoo_38:

(Start: 30 @35550 has 1 MA's), (Start: 38 @35592 has 291 MA's), (46, 35631), (52, 35667), (55, 35682), (65, 35724), (66, 35748), (76, 35793), (82, 35838), (86, 35874), (93, 35922), (96, 35934), (105, 36015), (106, 36018),

Gene: Kimbrough_38 Start: 35294, Stop: 35917, Start Num: 38

Candidate Starts for Kimbrough_38:

(Start: 30 @35252 has 1 MA's), (Start: 38 @35294 has 291 MA's), (46, 35333), (52, 35369), (55, 35384), (65, 35426), (66, 35450), (76, 35495), (82, 35540), (86, 35576), (93, 35624), (96, 35636), (105, 35717), (106, 35720),

Gene: KingTut_29 Start: 30963, Stop: 31586, Start Num: 38

Candidate Starts for KingTut_29:

(Start: 30 @30921 has 1 MA's), (Start: 38 @30963 has 291 MA's), (46, 31002), (52, 31038), (55, 31053), (65, 31095), (66, 31119), (76, 31164), (82, 31209), (86, 31245), (93, 31293), (96, 31305), (105, 31386), (106, 31389),

Gene: KingVeVeVe_38 Start: 35567, Stop: 36190, Start Num: 38

Candidate Starts for KingVeVeVe_38:

(Start: 30 @35525 has 1 MA's), (Start: 38 @35567 has 291 MA's), (46, 35606), (52, 35642), (55, 35657), (65, 35699), (66, 35723), (76, 35768), (82, 35813), (86, 35849), (93, 35897), (96, 35909), (105, 35990), (106, 35993),

Gene: KlimbOn_38 Start: 35580, Stop: 36203, Start Num: 38

Candidate Starts for KlimbOn_38:

(Start: 30 @35538 has 1 MA's), (Start: 38 @35580 has 291 MA's), (46, 35619), (52, 35655), (55, 35670), (65, 35712), (66, 35736), (76, 35781), (82, 35826), (86, 35862), (93, 35910), (96, 35922), (105, 36003), (106, 36006),

Gene: Kloppinator_38 Start: 35603, Stop: 36226, Start Num: 38

Candidate Starts for Kloppinator_38:

(Start: 30 @35561 has 1 MA's), (Start: 38 @35603 has 291 MA's), (46, 35642), (52, 35678), (55, 35693), (65, 35735), (66, 35759), (76, 35804), (82, 35849), (86, 35885), (93, 35933), (96, 35945), (105, 36026), (106, 36029),

Gene: Knocker_39 Start: 37447, Stop: 38208, Start Num: 22

Candidate Starts for Knocker_39:

(1, 36670), (4, 36772), (6, 36913), (10, 37015), (12, 37120), (16, 37273), (17, 37351), (Start: 22 @37447 has 34 MA's), (23, 37468), (29, 37525), (Start: 30 @37540 has 1 MA's), (32, 37549), (39, 37588), (45, 37618), (48, 37639), (54, 37672), (64, 37705), (70, 37753), (76, 37783), (82, 37828), (83, 37834), (85, 37861), (89, 37888), (95, 37924), (99, 37963), (102, 37987), (104, 38002), (106, 38011), (113, 38047), (114, 38050), (130, 38194),

Gene: Kwadwo_37 Start: 35284, Stop: 35907, Start Num: 38

Candidate Starts for Kwadwo_37:

(Start: 30 @35242 has 1 MA's), (Start: 38 @35284 has 291 MA's), (46, 35323), (52, 35359), (55, 35374), (65, 35416), (66, 35440), (76, 35485), (82, 35530), (86, 35566), (93, 35614), (96, 35626), (105, 35707), (106, 35710),

Gene: Kwksand96_37 Start: 35153, Stop: 35776, Start Num: 38

Candidate Starts for Kwksand96_37:

(Start: 30 @35111 has 1 MA's), (Start: 38 @35153 has 291 MA's), (46, 35192), (52, 35228), (55, 35243), (65, 35285), (66, 35309), (76, 35354), (82, 35399), (86, 35435), (93, 35483), (96, 35495), (105, 35576), (106, 35579),

Gene: Labeouficaum_37 Start: 35148, Stop: 35771, Start Num: 38

Candidate Starts for Labeouficaum_37:

(Start: 30 @35106 has 1 MA's), (Start: 38 @35148 has 291 MA's), (46, 35187), (52, 35223), (55, 35238), (65, 35280), (66, 35304), (76, 35349), (82, 35394), (86, 35430), (93, 35478), (96, 35490), (105, 35571), (106, 35574),

Gene: Lambano_34 Start: 34764, Stop: 35516, Start Num: 22

Candidate Starts for Lambano_34:

(Start: 20 @34722 has 1 MA's), (Start: 22 @34764 has 34 MA's), (26, 34809), (29, 34830), (32, 34854), (45, 34923), (47, 34935), (77, 35100), (85, 35166), (95, 35226), (97, 35235), (104, 35304), (113, 35349), (130, 35496),

Gene: LasagnaCat_38 Start: 35586, Stop: 36209, Start Num: 38

Candidate Starts for LasagnaCat_38:

(Start: 30 @35544 has 1 MA's), (Start: 38 @35586 has 291 MA's), (46, 35625), (52, 35661), (55, 35676), (65, 35718), (66, 35742), (76, 35787), (82, 35832), (86, 35868), (93, 35916), (96, 35928),

(105, 36009), (106, 36012),

Gene: Lasso_38 Start: 35559, Stop: 36182, Start Num: 38

Candidate Starts for Lasso_38:

(Start: 30 @35517 has 1 MA's), (Start: 38 @35559 has 291 MA's), (46, 35598), (52, 35634), (55, 35649), (65, 35691), (66, 35715), (76, 35760), (82, 35805), (86, 35841), (93, 35889), (96, 35901), (105, 35982), (106, 35985),

Gene: LeeLot_38 Start: 35590, Stop: 36213, Start Num: 38

Candidate Starts for LeeLot_38:

(Start: 30 @35548 has 1 MA's), (Start: 38 @35590 has 291 MA's), (46, 35629), (52, 35665), (55, 35680), (65, 35722), (66, 35746), (76, 35791), (82, 35836), (86, 35872), (93, 35920), (96, 35932), (105, 36013), (106, 36016),

Gene: Lego3393_38 Start: 35595, Stop: 36218, Start Num: 38

Candidate Starts for Lego3393_38:

(Start: 30 @35553 has 1 MA's), (Start: 38 @35595 has 291 MA's), (46, 35634), (52, 35670), (55, 35685), (65, 35727), (66, 35751), (76, 35796), (82, 35841), (86, 35877), (93, 35925), (96, 35937), (105, 36018), (106, 36021),

Gene: Legolas_37 Start: 35300, Stop: 35923, Start Num: 38

Candidate Starts for Legolas_37:

(Start: 30 @35258 has 1 MA's), (Start: 38 @35300 has 291 MA's), (46, 35339), (52, 35375), (55, 35390), (65, 35432), (66, 35456), (76, 35501), (82, 35546), (86, 35582), (93, 35630), (96, 35642), (105, 35723), (106, 35726),

Gene: LeiMonet_38 Start: 35291, Stop: 35914, Start Num: 38

Candidate Starts for LeiMonet_38:

(Start: 30 @35249 has 1 MA's), (Start: 38 @35291 has 291 MA's), (46, 35330), (52, 35366), (55, 35381), (65, 35423), (66, 35447), (82, 35537), (86, 35573), (93, 35621), (96, 35633), (105, 35714), (106, 35717),

Gene: LemonSlice_38 Start: 35287, Stop: 35910, Start Num: 38

Candidate Starts for LemonSlice_38:

(Start: 30 @35245 has 1 MA's), (Start: 38 @35287 has 291 MA's), (46, 35326), (52, 35362), (55, 35377), (65, 35419), (66, 35443), (76, 35488), (82, 35533), (86, 35569), (93, 35617), (96, 35629), (105, 35710), (106, 35713),

Gene: Ligma_31 Start: 28728, Stop: 29333, Start Num: 38

Candidate Starts for Ligma_31:

(11, 28170), (14, 28272), (Start: 38 @28728 has 291 MA's), (48, 28770), (55, 28806), (68, 28884), (80, 28941), (86, 28998), (94, 29046), (101, 29103), (102, 29115), (110, 29154), (123, 29226), (124, 29253),

Gene: LilMcDreamy_34 Start: 35307, Stop: 35933, Start Num: 38

Candidate Starts for LilMcDreamy_34:

(19, 35112), (21, 35130), (Start: 38 @35307 has 291 MA's), (52, 35385), (55, 35400), (75, 35502), (76, 35511), (82, 35556), (90, 35619), (102, 35712), (104, 35727), (106, 35736), (130, 35919),

Gene: LittleMunchkin_33 Start: 32153, Stop: 32749, Start Num: 38

Candidate Starts for LittleMunchkin_33:

(Start: 38 @32153 has 291 MA's), (48, 32195), (49, 32198), (52, 32216), (61, 32255), (68, 32309), (71, 32318), (85, 32420), (86, 32423), (101, 32519), (102, 32531), (110, 32570), (120, 32627), (129,

32720),

Gene: Lolalove_35 Start: 35789, Stop: 36541, Start Num: 22

Candidate Starts for Lolalove_35:

(10, 35363), (Start: 20 @35747 has 1 MA's), (Start: 22 @35789 has 34 MA's), (26, 35834), (29, 35855), (32, 35879), (45, 35948), (77, 36125), (85, 36191), (95, 36251), (97, 36260), (104, 36329), (130, 36521),

Gene: Longacauda_37 Start: 35292, Stop: 35915, Start Num: 38

Candidate Starts for Longacauda_37:

(Start: 30 @35250 has 1 MA's), (Start: 38 @35292 has 291 MA's), (46, 35331), (52, 35367), (55, 35382), (65, 35424), (66, 35448), (76, 35493), (82, 35538), (86, 35574), (93, 35622), (96, 35634), (105, 35715), (106, 35718),

Gene: Lopsy_37 Start: 35142, Stop: 35765, Start Num: 38

Candidate Starts for Lopsy_37:

(Start: 30 @35100 has 1 MA's), (Start: 38 @35142 has 291 MA's), (46, 35181), (52, 35217), (55, 35232), (65, 35274), (76, 35343), (82, 35388), (86, 35424), (93, 35472), (96, 35484), (105, 35565), (106, 35568),

Gene: LostAndPhound_37 Start: 35293, Stop: 35916, Start Num: 38

Candidate Starts for LostAndPhound_37:

(Start: 30 @35251 has 1 MA's), (Start: 38 @35293 has 291 MA's), (46, 35332), (52, 35368), (55, 35383), (65, 35425), (66, 35449), (76, 35494), (82, 35539), (86, 35575), (93, 35623), (96, 35635), (105, 35716), (106, 35719),

Gene: LuckyMarjie_37 Start: 35302, Stop: 35925, Start Num: 38

Candidate Starts for LuckyMarjie_37:

(Start: 30 @35260 has 1 MA's), (Start: 38 @35302 has 291 MA's), (46, 35341), (52, 35377), (55, 35392), (65, 35434), (66, 35458), (76, 35503), (82, 35548), (86, 35584), (93, 35632), (96, 35644), (105, 35725), (106, 35728),

Gene: Lulumae_37 Start: 35284, Stop: 35907, Start Num: 38

Candidate Starts for Lulumae_37:

(Start: 30 @35242 has 1 MA's), (Start: 38 @35284 has 291 MA's), (46, 35323), (52, 35359), (55, 35374), (65, 35416), (76, 35485), (82, 35530), (86, 35566), (93, 35614), (96, 35626), (105, 35707), (106, 35710),

Gene: Lulwa_38 Start: 35571, Stop: 36194, Start Num: 38

Candidate Starts for Lulwa_38:

(Start: 30 @35529 has 1 MA's), (Start: 38 @35571 has 291 MA's), (46, 35610), (52, 35646), (55, 35661), (65, 35703), (66, 35727), (76, 35772), (82, 35817), (86, 35853), (93, 35901), (96, 35913), (105, 35994), (106, 35997),

Gene: Lumine_37 Start: 35280, Stop: 35903, Start Num: 38

Candidate Starts for Lumine_37:

(Start: 30 @35238 has 1 MA's), (Start: 38 @35280 has 291 MA's), (46, 35319), (52, 35355), (55, 35370), (65, 35412), (66, 35436), (76, 35481), (82, 35526), (86, 35562), (93, 35610), (96, 35622), (105, 35703), (106, 35706),

Gene: MRabcd_37 Start: 35284, Stop: 35907, Start Num: 38

Candidate Starts for MRabcd_37:

(Start: 30 @35242 has 1 MA's), (Start: 38 @35284 has 291 MA's), (46, 35323), (52, 35359), (55, 35374), (65, 35416), (66, 35440), (82, 35530), (86, 35566), (93, 35614), (96, 35626), (105, 35707), (106, 35710),

Gene: Mag7_37 Start: 35190, Stop: 35813, Start Num: 38

Candidate Starts for Mag7_37:

(Start: 30 @35148 has 1 MA's), (Start: 38 @35190 has 291 MA's), (46, 35229), (52, 35265), (55, 35280), (65, 35322), (66, 35346), (76, 35391), (82, 35436), (86, 35472), (93, 35520), (96, 35532), (105, 35613), (106, 35616),

Gene: Magic8_38 Start: 35625, Stop: 36248, Start Num: 38

Candidate Starts for Magic8_38:

(Start: 30 @35583 has 1 MA's), (Start: 38 @35625 has 291 MA's), (46, 35664), (52, 35700), (55, 35715), (65, 35757), (66, 35781), (76, 35826), (82, 35871), (86, 35907), (93, 35955), (96, 35967), (105, 36048), (106, 36051),

Gene: Magpie_34 Start: 35625, Stop: 36377, Start Num: 22

Candidate Starts for Magpie_34:

(Start: 20 @35583 has 1 MA's), (Start: 22 @35625 has 34 MA's), (26, 35670), (29, 35691), (32, 35715), (44, 35778), (45, 35784), (63, 35868), (76, 35949), (77, 35961), (82, 35994), (83, 36000), (85, 36027), (95, 36087), (97, 36096), (104, 36165), (130, 36357),

Gene: MakoManhole_33 Start: 30678, Stop: 31292, Start Num: 38

Candidate Starts for MakoManhole_33:

(Start: 30 @30636 has 1 MA's), (Start: 38 @30678 has 291 MA's), (43, 30693), (48, 30726), (52, 30747), (55, 30762), (81, 30915), (82, 30918), (108, 31101), (120, 31167), (123, 31182),

Gene: Mana_37 Start: 35299, Stop: 35922, Start Num: 38

Candidate Starts for Mana_37:

(Start: 30 @35257 has 1 MA's), (Start: 38 @35299 has 291 MA's), (46, 35338), (52, 35374), (55, 35389), (65, 35431), (66, 35455), (76, 35500), (82, 35545), (86, 35581), (93, 35629), (96, 35641), (105, 35722), (106, 35725),

Gene: Manad_37 Start: 35141, Stop: 35764, Start Num: 38

Candidate Starts for Manad_37:

(Start: 30 @35099 has 1 MA's), (Start: 38 @35141 has 291 MA's), (46, 35180), (52, 35216), (55, 35231), (65, 35273), (66, 35297), (76, 35342), (82, 35387), (86, 35423), (93, 35471), (96, 35483), (105, 35564), (106, 35567),

Gene: Mariokart_31 Start: 28667, Stop: 29272, Start Num: 38

Candidate Starts for Mariokart_31:

(14, 28211), (Start: 38 @28667 has 291 MA's), (48, 28709), (52, 28730), (57, 28757), (68, 28823), (71, 28832), (80, 28880), (82, 28901), (86, 28937), (91, 28976), (94, 28985), (101, 29042), (102, 29054), (120, 29150), (125, 29195),

Gene: Maru_37 Start: 35242, Stop: 35865, Start Num: 38

Candidate Starts for Maru_37:

(Start: 30 @35200 has 1 MA's), (Start: 38 @35242 has 291 MA's), (46, 35281), (52, 35317), (55, 35332), (65, 35374), (66, 35398), (76, 35443), (82, 35488), (86, 35524), (93, 35572), (96, 35584), (105, 35665), (106, 35668),

Gene: Maskar_37 Start: 35139, Stop: 35762, Start Num: 38

Candidate Starts for Maskar_37:

(Start: 30 @35097 has 1 MA's), (Start: 38 @35139 has 291 MA's), (46, 35178), (52, 35214), (55, 35229), (65, 35271), (66, 35295), (76, 35340), (82, 35385), (86, 35421), (93, 35469), (96, 35481), (105, 35562), (106, 35565),

Gene: Matalotodo_38 Start: 35585, Stop: 36208, Start Num: 38

Candidate Starts for Matalotodo_38:

(Start: 30 @35543 has 1 MA's), (Start: 38 @35585 has 291 MA's), (46, 35624), (52, 35660), (55, 35675), (65, 35717), (66, 35741), (76, 35786), (82, 35831), (86, 35867), (93, 35915), (96, 35927), (105, 36008), (106, 36011),

Gene: Mcshane_37 Start: 35282, Stop: 35905, Start Num: 38

Candidate Starts for Mcshane_37:

(Start: 30 @35240 has 1 MA's), (Start: 38 @35282 has 291 MA's), (46, 35321), (52, 35357), (55, 35372), (65, 35414), (66, 35438), (76, 35483), (82, 35528), (86, 35564), (93, 35612), (96, 35624), (105, 35705), (106, 35708),

Gene: Mecca_37 Start: 35285, Stop: 35908, Start Num: 38

Candidate Starts for Mecca_37:

(Start: 30 @35243 has 1 MA's), (Start: 38 @35285 has 291 MA's), (46, 35324), (52, 35360), (55, 35375), (65, 35417), (66, 35441), (76, 35486), (82, 35531), (86, 35567), (93, 35615), (96, 35627), (105, 35708), (106, 35711),

Gene: Megamind20_38 Start: 35307, Stop: 35930, Start Num: 38

Candidate Starts for Megamind20_38:

(Start: 30 @35265 has 1 MA's), (Start: 38 @35307 has 291 MA's), (46, 35346), (52, 35382), (55, 35397), (65, 35439), (66, 35463), (76, 35508), (82, 35553), (86, 35589), (93, 35637), (96, 35649), (105, 35730), (106, 35733),

Gene: Megatron_38 Start: 35583, Stop: 36206, Start Num: 38

Candidate Starts for Megatron_38:

(Start: 30 @35541 has 1 MA's), (Start: 38 @35583 has 291 MA's), (46, 35622), (52, 35658), (55, 35673), (65, 35715), (66, 35739), (76, 35784), (82, 35829), (86, 35865), (93, 35913), (96, 35925), (105, 36006), (106, 36009),

Gene: Melc17_38 Start: 35580, Stop: 36203, Start Num: 38

Candidate Starts for Melc17_38:

(Start: 30 @35538 has 1 MA's), (Start: 38 @35580 has 291 MA's), (46, 35619), (52, 35655), (55, 35670), (65, 35712), (66, 35736), (76, 35781), (82, 35826), (86, 35862), (93, 35910), (96, 35922), (105, 36003), (106, 36006),

Gene: MelsMeow_37 Start: 35188, Stop: 35811, Start Num: 38

Candidate Starts for MelsMeow_37:

(Start: 30 @35146 has 1 MA's), (Start: 38 @35188 has 291 MA's), (46, 35227), (52, 35263), (55, 35278), (65, 35320), (66, 35344), (76, 35389), (82, 35434), (86, 35470), (93, 35518), (96, 35530), (105, 35611), (106, 35614),

Gene: Mesh1_38 Start: 35597, Stop: 36220, Start Num: 38

Candidate Starts for Mesh1_38:

(Start: 30 @35555 has 1 MA's), (Start: 38 @35597 has 291 MA's), (46, 35636), (52, 35672), (55, 35687), (65, 35729), (66, 35753), (76, 35798), (82, 35843), (86, 35879), (93, 35927), (96, 35939), (105, 36020), (106, 36023),

Gene: MichaelPhcott_37 Start: 35187, Stop: 35810, Start Num: 38

Candidate Starts for MichaelPhcott_37:

(Start: 30 @35145 has 1 MA's), (Start: 38 @35187 has 291 MA's), (46, 35226), (52, 35262), (55, 35277), (65, 35319), (66, 35343), (76, 35388), (82, 35433), (86, 35469), (93, 35517), (96, 35529), (105, 35610), (106, 35613),

Gene: Mikota_38 Start: 35570, Stop: 36193, Start Num: 38

Candidate Starts for Mikota_38:

(Start: 30 @35528 has 1 MA's), (Start: 38 @35570 has 291 MA's), (46, 35609), (52, 35645), (55, 35660), (65, 35702), (66, 35726), (76, 35771), (82, 35816), (86, 35852), (93, 35900), (96, 35912), (105, 35993), (106, 35996),

Gene: MiniBoss_38 Start: 35576, Stop: 36199, Start Num: 38

Candidate Starts for MiniBoss_38:

(Start: 30 @35534 has 1 MA's), (Start: 38 @35576 has 291 MA's), (46, 35615), (52, 35651), (55, 35666), (65, 35708), (66, 35732), (76, 35777), (82, 35822), (86, 35858), (93, 35906), (96, 35918), (105, 35999), (106, 36002),

Gene: MitKao_38 Start: 35291, Stop: 35914, Start Num: 38

Candidate Starts for MitKao_38:

(Start: 30 @35249 has 1 MA's), (Start: 38 @35291 has 291 MA's), (46, 35330), (52, 35366), (55, 35381), (65, 35423), (66, 35447), (76, 35492), (82, 35537), (86, 35573), (93, 35621), (96, 35633), (105, 35714), (106, 35717),

Gene: Mithril_35 Start: 35793, Stop: 36545, Start Num: 22

Candidate Starts for Mithril_35:

(Start: 20 @35751 has 1 MA's), (Start: 22 @35793 has 34 MA's), (26, 35838), (29, 35859), (32, 35883), (44, 35946), (45, 35952), (47, 35964), (53, 36003), (76, 36117), (77, 36129), (82, 36162), (83, 36168), (85, 36195), (95, 36255), (97, 36264), (104, 36333), (130, 36525),

Gene: Morgushi_38 Start: 35292, Stop: 35915, Start Num: 38

Candidate Starts for Morgushi_38:

(Start: 30 @35250 has 1 MA's), (Start: 38 @35292 has 291 MA's), (46, 35331), (52, 35367), (55, 35382), (65, 35424), (66, 35448), (82, 35538), (86, 35574), (93, 35622), (96, 35634), (105, 35715), (106, 35718),

Gene: Morty_38 Start: 35592, Stop: 36215, Start Num: 38

Candidate Starts for Morty_38:

(Start: 30 @35550 has 1 MA's), (Start: 38 @35592 has 291 MA's), (46, 35631), (52, 35667), (55, 35682), (65, 35724), (66, 35748), (76, 35793), (82, 35838), (86, 35874), (93, 35922), (96, 35934), (105, 36015), (106, 36018),

Gene: Mosaic_37 Start: 35297, Stop: 35920, Start Num: 38

Candidate Starts for Mosaic_37:

(Start: 30 @35255 has 1 MA's), (Start: 38 @35297 has 291 MA's), (46, 35336), (52, 35372), (55, 35387), (65, 35429), (66, 35453), (76, 35498), (82, 35543), (86, 35579), (93, 35627), (96, 35639), (105, 35720), (106, 35723),

Gene: MossRose_33 Start: 30657, Stop: 31271, Start Num: 38

Candidate Starts for MossRose_33:

(Start: 30 @30615 has 1 MA's), (Start: 38 @30657 has 291 MA's), (43, 30672), (48, 30705), (52, 30726), (55, 30741), (79, 30873), (81, 30894), (82, 30897), (108, 31080), (120, 31146), (123, 31161),

Gene: MrPhizzler_37 Start: 35300, Stop: 35923, Start Num: 38

Candidate Starts for MrPhizzler_37:

(Start: 30 @35258 has 1 MA's), (Start: 38 @35300 has 291 MA's), (46, 35339), (52, 35375), (55, 35390), (65, 35432), (66, 35456), (76, 35501), (82, 35546), (86, 35582), (93, 35630), (96, 35642), (105, 35723), (106, 35726),

Gene: Mudslide_35 Start: 36025, Stop: 36777, Start Num: 22

Candidate Starts for Mudslide_35:

(Start: 20 @35983 has 1 MA's), (Start: 22 @36025 has 34 MA's), (26, 36070), (29, 36091), (32, 36115), (44, 36178), (45, 36184), (76, 36349), (77, 36361), (82, 36394), (83, 36400), (85, 36427), (95, 36487), (97, 36496), (104, 36565), (130, 36757),

Gene: Mulan_37 Start: 35309, Stop: 35932, Start Num: 38

Candidate Starts for Mulan_37:

(Start: 30 @35267 has 1 MA's), (Start: 38 @35309 has 291 MA's), (46, 35348), (52, 35384), (55, 35399), (65, 35441), (66, 35465), (76, 35510), (82, 35555), (86, 35591), (93, 35639), (96, 35651), (105, 35732), (106, 35735),

Gene: Murdoc_38 Start: 35584, Stop: 36207, Start Num: 38

Candidate Starts for Murdoc_38:

(Start: 30 @35542 has 1 MA's), (Start: 38 @35584 has 291 MA's), (46, 35623), (52, 35659), (55, 35674), (65, 35716), (66, 35740), (76, 35785), (82, 35830), (86, 35866), (93, 35914), (96, 35926), (105, 36007), (106, 36010),

Gene: Mutante_37 Start: 35291, Stop: 35914, Start Num: 38

Candidate Starts for Mutante_37:

(Start: 30 @35249 has 1 MA's), (Start: 38 @35291 has 291 MA's), (46, 35330), (52, 35366), (55, 35381), (65, 35423), (66, 35447), (82, 35537), (86, 35573), (93, 35621), (96, 35633), (105, 35714), (106, 35717),

Gene: Mysterious_39 Start: 36426, Stop: 37088, Start Num: 30

Candidate Starts for Mysterious_39:

(15, 36138), (21, 36291), (24, 36369), (Start: 30 @36426 has 1 MA's), (35, 36450), (Start: 38 @36468 has 291 MA's), (52, 36537), (76, 36663), (86, 36744), (91, 36789), (98, 36825), (104, 36882), (106, 36891), (114, 36930), (121, 36969), (130, 37074),

Gene: NHagos_31 Start: 29190, Stop: 29804, Start Num: 38

Candidate Starts for NHagos_31:

(Start: 30 @29148 has 1 MA's), (Start: 38 @29190 has 291 MA's), (43, 29205), (65, 29316), (71, 29361), (80, 29409), (81, 29427), (85, 29463), (86, 29466), (102, 29583), (110, 29622), (130, 29790), (131, 29796),

Gene: Nacho_0038 Start: 35586, Stop: 36209, Start Num: 38

Candidate Starts for Nacho_0038:

(Start: 30 @35544 has 1 MA's), (Start: 38 @35586 has 291 MA's), (46, 35625), (52, 35661), (55, 35676), (65, 35718), (66, 35742), (76, 35787), (82, 35832), (86, 35868), (93, 35916), (96, 35928), (105, 36009), (106, 36012),

Gene: Nanao_34 Start: 34751, Stop: 35503, Start Num: 22

Candidate Starts for Nanao_34:

(Start: 20 @34709 has 1 MA's), (Start: 22 @34751 has 34 MA's), (26, 34796), (29, 34817), (32, 34841), (45, 34910), (47, 34922), (77, 35087), (85, 35153), (95, 35213), (97, 35222), (104, 35291), (113, 35336), (130, 35483),

Gene: Nangang_37 Start: 36223, Stop: 36885, Start Num: 30

Candidate Starts for Nangang_37:

(15, 35935), (21, 36088), (24, 36166), (Start: 30 @36223 has 1 MA's), (35, 36247), (Start: 38 @36265 has 291 MA's), (52, 36334), (86, 36541), (93, 36592), (96, 36604), (98, 36622), (104, 36679), (106, 36688), (114, 36727), (121, 36766), (130, 36871),

Gene: Nehemiah_37 Start: 36426, Stop: 37088, Start Num: 30

Candidate Starts for Nehemiah_37:

(15, 36138), (21, 36291), (24, 36369), (Start: 30 @36426 has 1 MA's), (35, 36450), (Start: 38 @36468 has 291 MA's), (52, 36537), (76, 36663), (86, 36744), (91, 36789), (98, 36825), (104, 36882), (106, 36891), (114, 36930), (121, 36969), (130, 37074),

Gene: Newman_38 Start: 35583, Stop: 36206, Start Num: 38

Candidate Starts for Newman_38:

(Start: 30 @35541 has 1 MA's), (Start: 38 @35583 has 291 MA's), (46, 35622), (52, 35658), (55, 35673), (65, 35715), (66, 35739), (76, 35784), (82, 35829), (86, 35865), (93, 35913), (96, 35925), (105, 36006), (106, 36009),

Gene: Nicole21_38 Start: 35581, Stop: 36204, Start Num: 38

Candidate Starts for Nicole21_38:

(Start: 30 @35539 has 1 MA's), (Start: 38 @35581 has 291 MA's), (46, 35620), (52, 35656), (55, 35671), (65, 35713), (66, 35737), (76, 35782), (82, 35827), (86, 35863), (93, 35911), (96, 35923), (105, 36004), (106, 36007),

Gene: Nigel_33 Start: 34667, Stop: 35419, Start Num: 22

Candidate Starts for Nigel_33:

(Start: 22 @34667 has 34 MA's), (26, 34712), (29, 34733), (32, 34757), (44, 34820), (45, 34826), (76, 34991), (82, 35036), (85, 35069), (95, 35129), (97, 35138), (104, 35207), (130, 35399),

Gene: Numberten_38 Start: 35590, Stop: 36213, Start Num: 38

Candidate Starts for Numberten_38:

(Start: 30 @35548 has 1 MA's), (Start: 38 @35590 has 291 MA's), (46, 35629), (52, 35665), (55, 35680), (65, 35722), (66, 35746), (76, 35791), (82, 35836), (86, 35872), (93, 35920), (96, 35932), (105, 36013), (106, 36016),

Gene: Nyala_37 Start: 35283, Stop: 35906, Start Num: 38

Candidate Starts for Nyala_37:

(Start: 30 @35241 has 1 MA's), (Start: 38 @35283 has 291 MA's), (46, 35322), (52, 35358), (55, 35373), (65, 35415), (66, 35439), (76, 35484), (82, 35529), (86, 35565), (93, 35613), (96, 35625), (105, 35706), (106, 35709),

Gene: OSmaximus_38 Start: 35625, Stop: 36248, Start Num: 38

Candidate Starts for OSmaximus_38:

(Start: 30 @35583 has 1 MA's), (Start: 38 @35625 has 291 MA's), (46, 35664), (52, 35700), (55, 35715), (65, 35757), (66, 35781), (76, 35826), (82, 35871), (86, 35907), (93, 35955), (96, 35967), (105, 36048), (106, 36051),

Gene: Olak_37 Start: 35286, Stop: 35909, Start Num: 38

Candidate Starts for Olak_37:

(Start: 30 @35244 has 1 MA's), (Start: 38 @35286 has 291 MA's), (46, 35325), (52, 35361), (55, 35376), (65, 35418), (66, 35442), (76, 35487), (82, 35532), (86, 35568), (93, 35616), (96, 35628), (105, 35709), (106, 35712),

Gene: Oline_37 Start: 35152, Stop: 35775, Start Num: 38

Candidate Starts for Oline_37:

(Start: 30 @35110 has 1 MA's), (Start: 38 @35152 has 291 MA's), (46, 35191), (52, 35227), (55, 35242), (65, 35284), (66, 35308), (76, 35353), (82, 35398), (86, 35434), (93, 35482), (96, 35494), (105, 35575), (106, 35578),

Gene: Olive_38 Start: 35573, Stop: 36196, Start Num: 38

Candidate Starts for Olive_38:

(Start: 30 @35531 has 1 MA's), (Start: 38 @35573 has 291 MA's), (46, 35612), (52, 35648), (55, 35663), (65, 35705), (76, 35774), (82, 35819), (86, 35855), (93, 35903), (96, 35915), (105, 35996), (106, 35999),

Gene: OliverWalter_38 Start: 35595, Stop: 36218, Start Num: 38

Candidate Starts for OliverWalter_38:

(Start: 30 @35553 has 1 MA's), (Start: 38 @35595 has 291 MA's), (46, 35634), (52, 35670), (55, 35685), (65, 35727), (66, 35751), (76, 35796), (82, 35841), (86, 35877), (93, 35925), (96, 35937), (105, 36018), (106, 36021),

Gene: Omniscient_38 Start: 35592, Stop: 36215, Start Num: 38

Candidate Starts for Omniscient_38:

(Start: 30 @35550 has 1 MA's), (Start: 38 @35592 has 291 MA's), (46, 35631), (52, 35667), (55, 35682), (65, 35724), (66, 35748), (76, 35793), (82, 35838), (86, 35874), (93, 35922), (96, 35934), (105, 36015), (106, 36018),

Gene: Oosterbaan_38 Start: 35583, Stop: 36206, Start Num: 38

Candidate Starts for Oosterbaan_38:

(Start: 30 @35541 has 1 MA's), (Start: 38 @35583 has 291 MA's), (46, 35622), (52, 35658), (55, 35673), (65, 35715), (66, 35739), (76, 35784), (82, 35829), (86, 35865), (93, 35913), (96, 35925), (105, 36006), (106, 36009),

Gene: Orfeu_37 Start: 35291, Stop: 35914, Start Num: 38

Candidate Starts for Orfeu_37:

(Start: 30 @35249 has 1 MA's), (Start: 38 @35291 has 291 MA's), (46, 35330), (52, 35366), (55, 35381), (65, 35423), (66, 35447), (76, 35492), (82, 35537), (86, 35573), (93, 35621), (96, 35633), (105, 35714), (106, 35717),

Gene: Orion_38 Start: 35581, Stop: 36204, Start Num: 38

Candidate Starts for Orion_38:

(Start: 30 @35539 has 1 MA's), (Start: 38 @35581 has 291 MA's), (46, 35620), (52, 35656), (55, 35671), (65, 35713), (66, 35737), (76, 35782), (82, 35827), (86, 35863), (93, 35911), (96, 35923), (105, 36004), (106, 36007),

Gene: Orwigg_38 Start: 35279, Stop: 35902, Start Num: 38

Candidate Starts for Orwigg_38:

(Start: 30 @35237 has 1 MA's), (Start: 38 @35279 has 291 MA's), (46, 35318), (52, 35354), (55, 35369), (65, 35411), (66, 35435), (76, 35480), (82, 35525), (86, 35561), (93, 35609), (96, 35621), (105, 35702), (106, 35705),

Gene: PG1_38 Start: 35594, Stop: 36217, Start Num: 38

Candidate Starts for PG1_38:

(Start: 30 @35552 has 1 MA's), (Start: 38 @35594 has 291 MA's), (46, 35633), (52, 35669), (55, 35684), (65, 35726), (66, 35750), (76, 35795), (82, 35840), (86, 35876), (93, 35924), (96, 35936), (105, 36017), (106, 36020),

Gene: Pacifista_37 Start: 35285, Stop: 35908, Start Num: 38

Candidate Starts for Pacifista_37:

(Start: 30 @35243 has 1 MA's), (Start: 38 @35285 has 291 MA's), (46, 35324), (52, 35360), (55, 35375), (65, 35417), (66, 35441), (76, 35486), (82, 35531), (86, 35567), (93, 35615), (96, 35627), (105, 35708), (106, 35711),

Gene: PenguinLover67_40 Start: 37469, Stop: 38233, Start Num: 22

Candidate Starts for PenguinLover67_40:

(Start: 22 @37469 has 34 MA's), (23, 37493), (25, 37514), (29, 37550), (Start: 30 @37565 has 1 MA's), (45, 37643), (54, 37697), (85, 37886), (95, 37949), (96, 37952), (98, 37970), (104, 38027), (106, 38036), (130, 38219),

Gene: Phamished_38 Start: 35589, Stop: 36212, Start Num: 38

Candidate Starts for Phamished_38:

(Start: 30 @35547 has 1 MA's), (Start: 38 @35589 has 291 MA's), (46, 35628), (52, 35664), (55, 35679), (65, 35721), (66, 35745), (76, 35790), (82, 35835), (86, 35871), (93, 35919), (96, 35931), (105, 36012), (106, 36015),

Gene: Phareon_38 Start: 35293, Stop: 35916, Start Num: 38

Candidate Starts for Phareon_38:

(Start: 30 @35251 has 1 MA's), (Start: 38 @35293 has 291 MA's), (46, 35332), (52, 35368), (55, 35383), (65, 35425), (66, 35449), (76, 35494), (82, 35539), (86, 35575), (93, 35623), (96, 35635), (105, 35716), (106, 35719),

Gene: PhatCats2014_38 Start: 35598, Stop: 36221, Start Num: 38

Candidate Starts for PhatCats2014_38:

(Start: 30 @35556 has 1 MA's), (Start: 38 @35598 has 291 MA's), (46, 35637), (52, 35673), (55, 35688), (65, 35730), (66, 35754), (76, 35799), (82, 35844), (86, 35880), (93, 35928), (96, 35940), (105, 36021), (106, 36024),

Gene: PhatLouie_38 Start: 35587, Stop: 36210, Start Num: 38

Candidate Starts for PhatLouie_38:

(Start: 30 @35545 has 1 MA's), (Start: 38 @35587 has 291 MA's), (46, 35626), (52, 35662), (55, 35677), (65, 35719), (66, 35743), (76, 35788), (82, 35833), (86, 35869), (93, 35917), (96, 35929), (105, 36010), (106, 36013),

Gene: Phelemich_37 Start: 36467, Stop: 37087, Start Num: 38

Candidate Starts for Phelemich_37:

(15, 36137), (21, 36290), (24, 36368), (Start: 30 @36425 has 1 MA's), (35, 36449), (Start: 38 @36467 has 291 MA's), (52, 36536), (76, 36662), (86, 36743), (91, 36788), (98, 36824), (104, 36881), (106, 36890), (114, 36929), (121, 36968), (130, 37073),

Gene: PhenghisKhan_37 Start: 35193, Stop: 35816, Start Num: 38

Candidate Starts for PhenghisKhan_37:

(Start: 30 @35151 has 1 MA's), (Start: 38 @35193 has 291 MA's), (46, 35232), (52, 35268), (55, 35283), (65, 35325), (66, 35349), (76, 35394), (82, 35439), (86, 35475), (93, 35523), (96, 35535), (105, 35616), (106, 35619),

Gene: Pherdinand_38 Start: 35589, Stop: 36212, Start Num: 38

Candidate Starts for Pherdinand_38:

(Start: 30 @35547 has 1 MA's), (Start: 38 @35589 has 291 MA's), (46, 35628), (52, 35664), (55, 35679), (65, 35721), (66, 35745), (76, 35790), (82, 35835), (86, 35871), (93, 35919), (96, 35931),

(105, 36012), (106, 36015),

Gene: Phergie_37 Start: 35184, Stop: 35807, Start Num: 38

Candidate Starts for Phergie_37:

(Start: 30 @35142 has 1 MA's), (Start: 38 @35184 has 291 MA's), (46, 35223), (52, 35259), (55, 35274), (65, 35316), (66, 35340), (76, 35385), (82, 35430), (86, 35466), (93, 35514), (96, 35526), (105, 35607), (106, 35610),

Gene: Phipps_38 Start: 35560, Stop: 36183, Start Num: 38

Candidate Starts for Phipps_38:

(Start: 30 @35518 has 1 MA's), (Start: 38 @35560 has 291 MA's), (46, 35599), (52, 35635), (55, 35650), (65, 35692), (66, 35716), (76, 35761), (82, 35806), (86, 35842), (93, 35890), (96, 35902), (105, 35983), (106, 35986),

Gene: Phleuron_37 Start: 35190, Stop: 35813, Start Num: 38

Candidate Starts for Phleuron_37:

(Start: 30 @35148 has 1 MA's), (Start: 38 @35190 has 291 MA's), (46, 35229), (52, 35265), (55, 35280), (65, 35322), (66, 35346), (76, 35391), (82, 35436), (86, 35472), (93, 35520), (96, 35532), (105, 35613), (106, 35616),

Gene: PhrankReynolds_37 Start: 35190, Stop: 35813, Start Num: 38

Candidate Starts for PhrankReynolds_37:

(Start: 30 @35148 has 1 MA's), (Start: 38 @35190 has 291 MA's), (46, 35229), (52, 35265), (55, 35280), (65, 35322), (66, 35346), (76, 35391), (82, 35436), (86, 35472), (93, 35520), (96, 35532), (105, 35613), (106, 35616),

Gene: PhrodoBaggins_37 Start: 35577, Stop: 36200, Start Num: 38

Candidate Starts for PhrodoBaggins_37:

(Start: 30 @35535 has 1 MA's), (Start: 38 @35577 has 291 MA's), (46, 35616), (52, 35652), (55, 35667), (65, 35709), (66, 35733), (76, 35778), (82, 35823), (86, 35859), (93, 35907), (96, 35919), (105, 36000), (106, 36003),

Gene: Phunky_38 Start: 35590, Stop: 36213, Start Num: 38

Candidate Starts for Phunky_38:

(Start: 30 @35548 has 1 MA's), (Start: 38 @35590 has 291 MA's), (46, 35629), (52, 35665), (55, 35680), (65, 35722), (66, 35746), (76, 35791), (82, 35836), (86, 35872), (93, 35920), (96, 35932), (105, 36013), (106, 36016),

Gene: Piglet_0037 Start: 35697, Stop: 36320, Start Num: 38

Candidate Starts for Piglet_0037:

(Start: 30 @35655 has 1 MA's), (Start: 38 @35697 has 291 MA's), (46, 35736), (52, 35772), (55, 35787), (65, 35829), (66, 35853), (76, 35898), (82, 35943), (86, 35979), (93, 36027), (96, 36039), (105, 36120), (106, 36123),

Gene: Pine5_33 Start: 30067, Stop: 30699, Start Num: 41

Candidate Starts for Pine5_33:

(2, 29080), (3, 29086), (8, 29326), (13, 29542), (28, 29947), (31, 29971), (36, 30004), (41, 30067), (43, 30082), (50, 30124), (67, 30232), (69, 30241), (73, 30259), (74, 30262), (78, 30289), (80, 30298), (105, 30493), (107, 30499), (108, 30502), (112, 30526), (122, 30565), (123, 30568), (127, 30619), (128, 30628), (133, 30694),

Gene: PinheadLarry_38 Start: 35303, Stop: 35926, Start Num: 38

Candidate Starts for PinheadLarry_38:

(Start: 30 @35261 has 1 MA's), (Start: 38 @35303 has 291 MA's), (46, 35342), (52, 35378), (55, 35393), (65, 35435), (66, 35459), (76, 35504), (82, 35549), (86, 35585), (93, 35633), (96, 35645), (105, 35726), (106, 35729),

Gene: Pinkman_37 Start: 35146, Stop: 35769, Start Num: 38

Candidate Starts for Pinkman_37:

(Start: 30 @35104 has 1 MA's), (Start: 38 @35146 has 291 MA's), (46, 35185), (52, 35221), (55, 35236), (65, 35278), (66, 35302), (76, 35347), (82, 35392), (86, 35428), (93, 35476), (96, 35488), (105, 35569), (106, 35572),

Gene: Pipsqueak_38 Start: 35588, Stop: 36211, Start Num: 38

Candidate Starts for Pipsqueak_38:

(Start: 30 @35546 has 1 MA's), (Start: 38 @35588 has 291 MA's), (46, 35627), (52, 35663), (55, 35678), (65, 35720), (66, 35744), (76, 35789), (82, 35834), (86, 35870), (93, 35918), (96, 35930), (105, 36011), (106, 36014),

Gene: Placalicious_37 Start: 35281, Stop: 35904, Start Num: 38

Candidate Starts for Placalicious_37:

(Start: 30 @35239 has 1 MA's), (Start: 38 @35281 has 291 MA's), (46, 35320), (52, 35356), (55, 35371), (65, 35413), (66, 35437), (76, 35482), (82, 35527), (86, 35563), (93, 35611), (96, 35623), (105, 35704), (106, 35707),

Gene: Plmatters_38 Start: 35587, Stop: 36210, Start Num: 38

Candidate Starts for Plmatters_38:

(Start: 30 @35545 has 1 MA's), (Start: 38 @35587 has 291 MA's), (46, 35626), (52, 35662), (55, 35677), (65, 35719), (66, 35743), (76, 35788), (82, 35833), (86, 35869), (93, 35917), (96, 35929), (105, 36010), (106, 36013),

Gene: Podrick_38 Start: 35578, Stop: 36201, Start Num: 38

Candidate Starts for Podrick_38:

(Start: 30 @35536 has 1 MA's), (Start: 38 @35578 has 291 MA's), (46, 35617), (52, 35653), (55, 35668), (65, 35710), (66, 35734), (76, 35779), (82, 35824), (86, 35860), (93, 35908), (96, 35920), (105, 36001), (106, 36004),

Gene: Pops_38 Start: 35602, Stop: 36225, Start Num: 38

Candidate Starts for Pops_38:

(Start: 30 @35560 has 1 MA's), (Start: 38 @35602 has 291 MA's), (46, 35641), (52, 35677), (55, 35692), (65, 35734), (66, 35758), (76, 35803), (82, 35848), (86, 35884), (93, 35932), (96, 35944), (105, 36025), (106, 36028),

Gene: Poster_34 Start: 34752, Stop: 35504, Start Num: 22

Candidate Starts for Poster_34:

(Start: 20 @34710 has 1 MA's), (Start: 22 @34752 has 34 MA's), (26, 34797), (29, 34818), (32, 34842), (45, 34911), (47, 34923), (77, 35088), (85, 35154), (95, 35214), (97, 35223), (104, 35292), (113, 35337), (130, 35484),

Gene: Potter_37 Start: 35302, Stop: 35925, Start Num: 38

Candidate Starts for Potter_37:

(Start: 30 @35260 has 1 MA's), (Start: 38 @35302 has 291 MA's), (46, 35341), (52, 35377), (55, 35392), (65, 35434), (66, 35458), (76, 35503), (82, 35548), (86, 35584), (93, 35632), (96, 35644), (105, 35725), (106, 35728),

Gene: Prickles_38 Start: 35578, Stop: 36201, Start Num: 38

Candidate Starts for Prickles_38:

(Start: 30 @35536 has 1 MA's), (Start: 38 @35578 has 291 MA's), (46, 35617), (52, 35653), (55, 35668), (65, 35710), (66, 35734), (76, 35779), (82, 35824), (86, 35860), (93, 35908), (96, 35920), (105, 36001), (106, 36004),

Gene: Prince_35 Start: 35935, Stop: 36687, Start Num: 22

Candidate Starts for Prince_35:

(Start: 20 @35893 has 1 MA's), (Start: 22 @35935 has 34 MA's), (26, 35980), (29, 36001), (32, 36025), (44, 36088), (45, 36094), (67, 36220), (76, 36259), (77, 36271), (82, 36304), (83, 36310), (85, 36337), (95, 36397), (97, 36406), (104, 36475), (130, 36667),

Gene: ProfessorX_38 Start: 35573, Stop: 36196, Start Num: 38

Candidate Starts for ProfessorX_38:

(Start: 30 @35531 has 1 MA's), (Start: 38 @35573 has 291 MA's), (46, 35612), (52, 35648), (55, 35663), (65, 35705), (76, 35774), (82, 35819), (86, 35855), (93, 35903), (96, 35915), (105, 35996), (106, 35999),

Gene: Puhltonio_38 Start: 35594, Stop: 36217, Start Num: 38

Candidate Starts for Puhltonio_38:

(Start: 30 @35552 has 1 MA's), (Start: 38 @35594 has 291 MA's), (46, 35633), (52, 35669), (55, 35684), (65, 35726), (66, 35750), (76, 35795), (82, 35840), (86, 35876), (93, 35924), (96, 35936), (105, 36017), (106, 36020),

Gene: QueenBeane_38 Start: 35584, Stop: 36207, Start Num: 38

Candidate Starts for QueenBeane_38:

(Start: 30 @35542 has 1 MA's), (Start: 38 @35584 has 291 MA's), (46, 35623), (52, 35659), (55, 35674), (65, 35716), (66, 35740), (82, 35830), (86, 35866), (93, 35914), (96, 35926), (105, 36007), (106, 36010),

Gene: QueenPie_34 Start: 35876, Stop: 36628, Start Num: 22

Candidate Starts for QueenPie_34:

(Start: 20 @35834 has 1 MA's), (Start: 22 @35876 has 34 MA's), (29, 35942), (32, 35966), (44, 36029), (45, 36035), (77, 36212), (82, 36245), (83, 36251), (85, 36278), (95, 36338), (97, 36347), (104, 36416), (130, 36608),

Gene: Quesadilla_40 Start: 37483, Stop: 38244, Start Num: 22

Candidate Starts for Quesadilla_40:

(Start: 20 @37438 has 1 MA's), (Start: 22 @37483 has 34 MA's), (25, 37525), (29, 37561), (Start: 30 @37576 has 1 MA's), (34, 37594), (42, 37639), (54, 37708), (76, 37819), (85, 37897), (92, 37948), (95, 37960), (96, 37963), (104, 38038), (130, 38230),

Gene: Quisquilliae_38 Start: 35612, Stop: 36235, Start Num: 38

Candidate Starts for Quisquilliae_38:

(Start: 30 @35570 has 1 MA's), (Start: 38 @35612 has 291 MA's), (46, 35651), (52, 35687), (55, 35702), (65, 35744), (66, 35768), (76, 35813), (82, 35858), (86, 35894), (93, 35942), (96, 35954), (105, 36035), (106, 36038),

Gene: RawrgerThat_35 Start: 35780, Stop: 36532, Start Num: 22

Candidate Starts for RawrgerThat_35:

(Start: 20 @35738 has 1 MA's), (Start: 22 @35780 has 34 MA's), (26, 35825), (29, 35846), (32, 35870), (44, 35933), (45, 35939), (76, 36104), (77, 36116), (82, 36149), (83, 36155), (85, 36182), (95, 36242), (97, 36251), (98, 36263), (104, 36320), (130, 36512),

Gene: RedMaple_37 Start: 35591, Stop: 36214, Start Num: 38

Candidate Starts for RedMaple_37:

(Start: 30 @35549 has 1 MA's), (Start: 38 @35591 has 291 MA's), (46, 35630), (52, 35666), (55, 35681), (65, 35723), (66, 35747), (76, 35792), (82, 35837), (86, 35873), (93, 35921), (96, 35933), (105, 36014), (106, 36017),

Gene: Reprobate_37 Start: 36472, Stop: 37092, Start Num: 38

Candidate Starts for Reprobate_37:

(15, 36142), (21, 36295), (24, 36373), (Start: 30 @36430 has 1 MA's), (35, 36454), (Start: 38 @36472 has 291 MA's), (52, 36541), (76, 36667), (86, 36748), (91, 36793), (98, 36829), (104, 36886), (106, 36895), (114, 36934), (121, 36973), (130, 37078),

Gene: Rich_36 Start: 36085, Stop: 36705, Start Num: 38

Candidate Starts for Rich_36:

(15, 35755), (21, 35908), (24, 35986), (Start: 30 @36043 has 1 MA's), (35, 36067), (Start: 38 @36085 has 291 MA's), (52, 36154), (91, 36406), (98, 36442), (104, 36499), (106, 36508), (114, 36547), (121, 36586),

Gene: Ricotta_37 Start: 35310, Stop: 35933, Start Num: 38

Candidate Starts for Ricotta_37:

(Start: 30 @35268 has 1 MA's), (Start: 38 @35310 has 291 MA's), (46, 35349), (52, 35385), (55, 35400), (65, 35442), (66, 35466), (76, 35511), (82, 35556), (86, 35592), (93, 35640), (96, 35652), (105, 35733), (106, 35736),

Gene: Riggan_38 Start: 35571, Stop: 36194, Start Num: 38

Candidate Starts for Riggan_38:

(Start: 30 @35529 has 1 MA's), (Start: 38 @35571 has 291 MA's), (46, 35610), (52, 35646), (55, 35661), (65, 35703), (66, 35727), (76, 35772), (82, 35817), (86, 35853), (93, 35901), (96, 35913), (105, 35994), (106, 35997),

Gene: Rimu_39 Start: 35320, Stop: 35943, Start Num: 38

Candidate Starts for Rimu_39:

(Start: 30 @35278 has 1 MA's), (Start: 38 @35320 has 291 MA's), (46, 35359), (52, 35395), (55, 35410), (65, 35452), (66, 35476), (76, 35521), (82, 35566), (86, 35602), (93, 35650), (96, 35662), (105, 35743), (106, 35746),

Gene: Rinke_39 Start: 37046, Stop: 37804, Start Num: 22

Candidate Starts for Rinke_39:

(10, 36614), (16, 36872), (17, 36950), (18, 36989), (Start: 22 @37046 has 34 MA's), (23, 37067), (29, 37124), (Start: 30 @37139 has 1 MA's), (33, 37154), (45, 37214), (54, 37268), (64, 37301), (76, 37379), (82, 37424), (83, 37430), (85, 37457), (95, 37520), (99, 37559), (102, 37583), (104, 37598), (106, 37607), (130, 37790),

Gene: Robyn_37 Start: 35155, Stop: 35778, Start Num: 38

Candidate Starts for Robyn_37:

(Start: 30 @35113 has 1 MA's), (Start: 38 @35155 has 291 MA's), (46, 35194), (52, 35230), (55, 35245), (65, 35287), (76, 35356), (82, 35401), (86, 35437), (93, 35485), (96, 35497), (105, 35578), (106, 35581),

Gene: Roliet_38 Start: 35580, Stop: 36203, Start Num: 38

Candidate Starts for Roliet_38:

(Start: 30 @35538 has 1 MA's), (Start: 38 @35580 has 291 MA's), (46, 35619), (52, 35655), (55, 35670), (65, 35712), (66, 35736), (76, 35781), (82, 35826), (86, 35862), (93, 35910), (96, 35922),

(105, 36003), (106, 36006),

Gene: Roscoe_39 Start: 35818, Stop: 36441, Start Num: 38

Candidate Starts for Roscoe_39:

(Start: 30 @35776 has 1 MA's), (Start: 38 @35818 has 291 MA's), (46, 35857), (52, 35893), (55, 35908), (65, 35950), (76, 36019), (82, 36064), (86, 36100), (93, 36148), (96, 36160), (105, 36241), (106, 36244),

Gene: Roy17_38 Start: 35284, Stop: 35907, Start Num: 38

Candidate Starts for Roy17_38:

(Start: 30 @35242 has 1 MA's), (Start: 38 @35284 has 291 MA's), (46, 35323), (52, 35359), (55, 35374), (65, 35416), (76, 35485), (82, 35530), (86, 35566), (93, 35614), (96, 35626), (105, 35707), (106, 35710),

Gene: SDcharge11_38 Start: 35558, Stop: 36181, Start Num: 38

Candidate Starts for SDcharge11_38:

(Start: 30 @35516 has 1 MA's), (Start: 38 @35558 has 291 MA's), (46, 35597), (52, 35633), (55, 35648), (65, 35690), (66, 35714), (76, 35759), (82, 35804), (86, 35840), (93, 35888), (96, 35900), (105, 35981), (106, 35984),

Gene: Saguaro_39 Start: 37118, Stop: 37882, Start Num: 22

Candidate Starts for Saguaro_39:

(16, 36950), (Start: 20 @37076 has 1 MA's), (Start: 22 @37118 has 34 MA's), (27, 37181), (29, 37196), (58, 37361), (76, 37454), (77, 37466), (85, 37532), (92, 37583), (95, 37595), (96, 37598), (98, 37616), (102, 37658), (104, 37673), (126, 37811), (130, 37865),

Gene: Samaymay_38 Start: 35584, Stop: 36207, Start Num: 38

Candidate Starts for Samaymay_38:

(Start: 30 @35542 has 1 MA's), (Start: 38 @35584 has 291 MA's), (46, 35623), (52, 35659), (55, 35674), (65, 35716), (66, 35740), (82, 35830), (86, 35866), (93, 35914), (96, 35926), (105, 36007), (106, 36010),

Gene: SassyCat97_37 Start: 35290, Stop: 35913, Start Num: 38

Candidate Starts for SassyCat97_37:

(Start: 30 @35248 has 1 MA's), (Start: 38 @35290 has 291 MA's), (46, 35329), (52, 35365), (55, 35380), (65, 35422), (66, 35446), (76, 35491), (82, 35536), (86, 35572), (93, 35620), (96, 35632), (105, 35713), (106, 35716),

Gene: Schadenfreude_37 Start: 35141, Stop: 35764, Start Num: 38

Candidate Starts for Schadenfreude_37:

(Start: 30 @35099 has 1 MA's), (Start: 38 @35141 has 291 MA's), (46, 35180), (52, 35216), (55, 35231), (65, 35273), (66, 35297), (76, 35342), (82, 35387), (86, 35423), (93, 35471), (96, 35483), (105, 35564), (106, 35567),

Gene: Schueller_38 Start: 35306, Stop: 35929, Start Num: 38

Candidate Starts for Schueller_38:

(Start: 30 @35264 has 1 MA's), (Start: 38 @35306 has 291 MA's), (46, 35345), (52, 35381), (55, 35396), (65, 35438), (66, 35462), (76, 35507), (82, 35552), (86, 35588), (93, 35636), (96, 35648), (105, 35729), (106, 35732),

Gene: Scoot17C_38 Start: 35583, Stop: 36206, Start Num: 38

Candidate Starts for Scoot17C_38:

(Start: 30 @35541 has 1 MA's), (Start: 38 @35583 has 291 MA's), (46, 35622), (52, 35658), (55, 35673), (65, 35715), (66, 35739), (76, 35784), (82, 35829), (86, 35865), (93, 35913), (96, 35925), (105, 36006), (106, 36009),

Gene: Scrick_38 Start: 35308, Stop: 35931, Start Num: 38

Candidate Starts for Scrick_38:

(Start: 30 @35266 has 1 MA's), (Start: 38 @35308 has 291 MA's), (46, 35347), (52, 35383), (55, 35398), (65, 35440), (66, 35464), (76, 35509), (82, 35554), (86, 35590), (93, 35638), (96, 35650), (105, 35731), (106, 35734),

Gene: Selr12_38 Start: 35311, Stop: 35934, Start Num: 38

Candidate Starts for Selr12_38:

(Start: 30 @35269 has 1 MA's), (Start: 38 @35311 has 291 MA's), (46, 35350), (52, 35386), (55, 35401), (65, 35443), (66, 35467), (76, 35512), (82, 35557), (86, 35593), (93, 35641), (96, 35653), (105, 35734), (106, 35737),

Gene: Serendipitous_36 Start: 36036, Stop: 36656, Start Num: 38

Candidate Starts for Serendipitous_36:

(15, 35706), (21, 35859), (24, 35937), (Start: 30 @35994 has 1 MA's), (35, 36018), (Start: 38 @36036 has 291 MA's), (52, 36105), (86, 36312), (96, 36375), (98, 36393), (104, 36450), (106, 36459), (114, 36498), (130, 36642),

Gene: Serendipity_38 Start: 35608, Stop: 36231, Start Num: 38

Candidate Starts for Serendipity_38:

(Start: 30 @35566 has 1 MA's), (Start: 38 @35608 has 291 MA's), (46, 35647), (52, 35683), (55, 35698), (65, 35740), (66, 35764), (76, 35809), (82, 35854), (86, 35890), (93, 35938), (96, 35950), (105, 36031), (106, 36034),

Gene: Serpentine_0038 Start: 35589, Stop: 36212, Start Num: 38

Candidate Starts for Serpentine_0038:

(Start: 30 @35547 has 1 MA's), (Start: 38 @35589 has 291 MA's), (46, 35628), (52, 35664), (55, 35679), (65, 35721), (66, 35745), (76, 35790), (82, 35835), (86, 35871), (93, 35919), (96, 35931), (105, 36012), (106, 36015),

Gene: Shatter_31 Start: 28728, Stop: 29333, Start Num: 38

Candidate Starts for Shatter_31:

(11, 28170), (14, 28272), (Start: 38 @28728 has 291 MA's), (48, 28770), (55, 28806), (68, 28884), (80, 28941), (86, 28998), (94, 29046), (101, 29103), (102, 29115), (110, 29154), (123, 29226), (124, 29253),

Gene: Sheila_38 Start: 35626, Stop: 36249, Start Num: 38

Candidate Starts for Sheila_38:

(Start: 30 @35584 has 1 MA's), (Start: 38 @35626 has 291 MA's), (46, 35665), (52, 35701), (55, 35716), (65, 35758), (66, 35782), (76, 35827), (82, 35872), (86, 35908), (93, 35956), (96, 35968), (105, 36049), (106, 36052),

Gene: Shenyu_37 Start: 36265, Stop: 36885, Start Num: 38

Candidate Starts for Shenyu_37:

(15, 35935), (21, 36088), (24, 36166), (Start: 30 @36223 has 1 MA's), (35, 36247), (Start: 38 @36265 has 291 MA's), (52, 36334), (86, 36541), (93, 36592), (96, 36604), (98, 36622), (104, 36679), (106, 36688), (114, 36727), (130, 36871),

Gene: ShiVal_38 Start: 35582, Stop: 36205, Start Num: 38

Candidate Starts for ShiVal_38:

(Start: 30 @35540 has 1 MA's), (Start: 38 @35582 has 291 MA's), (46, 35621), (52, 35657), (55, 35672), (65, 35714), (76, 35783), (82, 35828), (86, 35864), (93, 35912), (96, 35924), (105, 36005), (106, 36008),

Gene: Sigman_38 Start: 35574, Stop: 36197, Start Num: 38

Candidate Starts for Sigman_38:

(Start: 30 @35532 has 1 MA's), (Start: 38 @35574 has 291 MA's), (46, 35613), (52, 35649), (55, 35664), (65, 35706), (66, 35730), (76, 35775), (82, 35820), (86, 35856), (93, 35904), (96, 35916), (105, 35997), (106, 36000),

Gene: SilverBell_38 Start: 35604, Stop: 36227, Start Num: 38

Candidate Starts for SilverBell_38:

(Start: 30 @35562 has 1 MA's), (Start: 38 @35604 has 291 MA's), (46, 35643), (52, 35679), (55, 35694), (65, 35736), (66, 35760), (76, 35805), (82, 35850), (86, 35886), (93, 35934), (96, 35946), (105, 36027), (106, 36030),

Gene: Simielle_37 Start: 35277, Stop: 35900, Start Num: 38

Candidate Starts for Simielle_37:

(Start: 30 @35235 has 1 MA's), (Start: 38 @35277 has 291 MA's), (46, 35316), (52, 35352), (55, 35367), (65, 35409), (76, 35478), (82, 35523), (86, 35559), (93, 35607), (96, 35619), (105, 35700), (106, 35703),

Gene: SirJeffery_37 Start: 36148, Stop: 36810, Start Num: 30

Candidate Starts for SirJeffery_37:

(15, 35860), (21, 36013), (24, 36091), (Start: 30 @36148 has 1 MA's), (35, 36172), (Start: 38 @36190 has 291 MA's), (52, 36259), (70, 36355), (82, 36430), (86, 36466), (91, 36511), (96, 36529), (98, 36547), (104, 36604), (106, 36613), (114, 36652), (121, 36691), (130, 36796),

Gene: Sisko_31 Start: 29588, Stop: 30184, Start Num: 38

Candidate Starts for Sisko_31:

(11, 29030), (14, 29132), (Start: 38 @29588 has 291 MA's), (57, 29678), (59, 29684), (85, 29855), (86, 29858), (91, 29897), (101, 29954), (102, 29966), (115, 30032), (130, 30170),

Gene: Skippy_38 Start: 35572, Stop: 36195, Start Num: 38

Candidate Starts for Skippy_38:

(Start: 30 @35530 has 1 MA's), (Start: 38 @35572 has 291 MA's), (46, 35611), (52, 35647), (55, 35662), (65, 35704), (66, 35728), (76, 35773), (82, 35818), (86, 35854), (93, 35902), (96, 35914), (105, 35995), (106, 35998),

Gene: Slatt_38 Start: 35598, Stop: 36221, Start Num: 38

Candidate Starts for Slatt_38:

(Start: 30 @35556 has 1 MA's), (Start: 38 @35598 has 291 MA's), (46, 35637), (52, 35673), (55, 35688), (65, 35730), (66, 35754), (76, 35799), (82, 35844), (86, 35880), (93, 35928), (96, 35940), (105, 36021), (106, 36024),

Gene: Soile_38 Start: 35304, Stop: 35927, Start Num: 38

Candidate Starts for Soile_38:

(Start: 30 @35262 has 1 MA's), (Start: 38 @35304 has 291 MA's), (46, 35343), (52, 35379), (55, 35394), (65, 35436), (66, 35460), (76, 35505), (82, 35550), (86, 35586), (93, 35634), (96, 35646), (105, 35727), (106, 35730),

Gene: Solosis_37 Start: 35299, Stop: 35922, Start Num: 38

Candidate Starts for Solosis_37:

(Start: 30 @35257 has 1 MA's), (Start: 38 @35299 has 291 MA's), (46, 35338), (52, 35374), (55, 35389), (65, 35431), (66, 35455), (76, 35500), (82, 35545), (86, 35581), (93, 35629), (96, 35641), (105, 35722), (106, 35725),

Gene: Sophia_37 Start: 35299, Stop: 35922, Start Num: 38

Candidate Starts for Sophia_37:

(Start: 30 @35257 has 1 MA's), (Start: 38 @35299 has 291 MA's), (46, 35338), (52, 35374), (55, 35389), (65, 35431), (66, 35455), (76, 35500), (82, 35545), (86, 35581), (93, 35629), (96, 35641), (105, 35722), (106, 35725),

Gene: Soto_38 Start: 35592, Stop: 36215, Start Num: 38

Candidate Starts for Soto_38:

(Start: 30 @35550 has 1 MA's), (Start: 38 @35592 has 291 MA's), (46, 35631), (52, 35667), (55, 35682), (65, 35724), (66, 35748), (76, 35793), (82, 35838), (86, 35874), (93, 35922), (96, 35934), (105, 36015), (106, 36018),

Gene: Sour_36 Start: 33410, Stop: 34063, Start Num: 38

Candidate Starts for Sour_36:

(Start: 30 @33368 has 1 MA's), (Start: 38 @33410 has 291 MA's), (48, 33509), (52, 33530), (68, 33623), (86, 33737), (101, 33833), (102, 33845), (110, 33884), (124, 33983), (130, 34049),

Gene: Spartan300_38 Start: 35578, Stop: 36201, Start Num: 38

Candidate Starts for Spartan300_38:

(Start: 30 @35536 has 1 MA's), (Start: 38 @35578 has 291 MA's), (46, 35617), (52, 35653), (55, 35668), (65, 35710), (76, 35779), (82, 35824), (86, 35860), (93, 35908), (96, 35920), (105, 36001), (106, 36004),

Gene: Squid_38 Start: 35290, Stop: 35913, Start Num: 38

Candidate Starts for Squid_38:

(Start: 30 @35248 has 1 MA's), (Start: 38 @35290 has 291 MA's), (46, 35329), (52, 35365), (55, 35380), (65, 35422), (66, 35446), (76, 35491), (82, 35536), (86, 35572), (93, 35620), (96, 35632), (105, 35713), (106, 35716),

Gene: Squiggle_38 Start: 35302, Stop: 35925, Start Num: 38

Candidate Starts for Squiggle_38:

(Start: 30 @35260 has 1 MA's), (Start: 38 @35302 has 291 MA's), (46, 35341), (52, 35377), (55, 35392), (65, 35434), (66, 35458), (76, 35503), (82, 35548), (86, 35584), (93, 35632), (96, 35644), (105, 35725), (106, 35728),

Gene: Stinger_33 Start: 34356, Stop: 35108, Start Num: 22

Candidate Starts for Stinger_33:

(Start: 20 @34314 has 1 MA's), (Start: 22 @34356 has 34 MA's), (26, 34401), (29, 34422), (32, 34446), (45, 34515), (54, 34569), (82, 34725), (85, 34758), (95, 34818), (104, 34896), (130, 35088),

Gene: StinkyVeggy_39 Start: 36342, Stop: 36962, Start Num: 38

Candidate Starts for StinkyVeggy_39:

(15, 36012), (21, 36165), (24, 36243), (Start: 30 @36300 has 1 MA's), (35, 36324), (Start: 38 @36342 has 291 MA's), (52, 36411), (86, 36618), (92, 36666), (93, 36669), (96, 36681), (98, 36699), (104, 36756), (106, 36765), (114, 36804), (121, 36843), (130, 36948),

Gene: Struggle_37 Start: 35140, Stop: 35763, Start Num: 38

Candidate Starts for Struggle_37:

(Start: 30 @35098 has 1 MA's), (Start: 38 @35140 has 291 MA's), (46, 35179), (52, 35215), (55, 35230), (65, 35272), (66, 35296), (76, 35341), (82, 35386), (86, 35422), (93, 35470), (96, 35482), (105, 35563), (106, 35566),

Gene: Suffolk_38 Start: 35589, Stop: 36212, Start Num: 38

Candidate Starts for Suffolk_38:

(Start: 30 @35547 has 1 MA's), (Start: 38 @35589 has 291 MA's), (46, 35628), (52, 35664), (55, 35679), (65, 35721), (66, 35745), (76, 35790), (82, 35835), (86, 35871), (93, 35919), (96, 35931), (105, 36012), (106, 36015),

Gene: Suigeneris_37 Start: 36193, Stop: 36813, Start Num: 38

Candidate Starts for Suigeneris_37:

(15, 35863), (21, 36016), (24, 36094), (Start: 30 @36151 has 1 MA's), (35, 36175), (Start: 38 @36193 has 291 MA's), (52, 36262), (70, 36358), (82, 36433), (86, 36469), (91, 36514), (96, 36532), (98, 36550), (104, 36607), (106, 36616), (114, 36655), (121, 36694), (130, 36799),

Gene: Surely_38 Start: 35592, Stop: 36215, Start Num: 38

Candidate Starts for Surely_38:

(Start: 30 @35550 has 1 MA's), (Start: 38 @35592 has 291 MA's), (46, 35631), (52, 35667), (55, 35682), (65, 35724), (66, 35748), (76, 35793), (82, 35838), (86, 35874), (93, 35922), (96, 35934), (105, 36015), (106, 36018),

Gene: Swiphy_39 Start: 35587, Stop: 36210, Start Num: 38

Candidate Starts for Swiphy_39:

(Start: 30 @35545 has 1 MA's), (Start: 38 @35587 has 291 MA's), (46, 35626), (52, 35662), (55, 35677), (65, 35719), (66, 35743), (76, 35788), (82, 35833), (86, 35869), (93, 35917), (96, 35929), (105, 36010), (106, 36013),

Gene: Swish_38 Start: 35575, Stop: 36198, Start Num: 38

Candidate Starts for Swish_38:

(Start: 30 @35533 has 1 MA's), (Start: 38 @35575 has 291 MA's), (46, 35614), (52, 35650), (55, 35665), (65, 35707), (66, 35731), (76, 35776), (82, 35821), (86, 35857), (93, 35905), (96, 35917), (105, 35998), (106, 36001),

Gene: TPA2_41 Start: 33468, Stop: 34019, Start Num: 52

Candidate Starts for TPA2_41:

(Start: 40 @33405 has 1 MA's), (52, 33468), (82, 33639), (84, 33669), (98, 33756), (100, 33780), (103, 33807), (108, 33828), (110, 33837), (116, 33876), (123, 33909),

Gene: TallGrassMM_38 Start: 35214, Stop: 35837, Start Num: 38

Candidate Starts for TallGrassMM_38:

(Start: 30 @35172 has 1 MA's), (Start: 38 @35214 has 291 MA's), (46, 35253), (52, 35289), (55, 35304), (65, 35346), (66, 35370), (82, 35460), (86, 35496), (93, 35544), (96, 35556), (105, 35637), (106, 35640),

Gene: Telesworld_37 Start: 35287, Stop: 35910, Start Num: 38

Candidate Starts for Telesworld_37:

(Start: 30 @35245 has 1 MA's), (Start: 38 @35287 has 291 MA's), (46, 35326), (52, 35362), (55, 35377), (65, 35419), (66, 35443), (76, 35488), (82, 35533), (86, 35569), (93, 35617), (96, 35629), (105, 35710), (106, 35713),

Gene: Thonko_37 Start: 33447, Stop: 34214, Start Num: 22

Candidate Starts for Thonko_37:

(18, 33381), (Start: 20 @33399 has 1 MA's), (Start: 22 @33447 has 34 MA's), (29, 33525), (82, 33837), (83, 33843), (86, 33873), (87, 33876), (95, 33930), (104, 34008), (121, 34095), (123, 34104), (130, 34200),

Gene: Thora_38 Start: 35591, Stop: 36214, Start Num: 38

Candidate Starts for Thora_38:

(Start: 30 @35549 has 1 MA's), (Start: 38 @35591 has 291 MA's), (46, 35630), (52, 35666), (55, 35681), (65, 35723), (66, 35747), (76, 35792), (82, 35837), (86, 35873), (93, 35921), (96, 35933), (105, 36014), (106, 36017),

Gene: ThreeOh3D2_38 Start: 35589, Stop: 36212, Start Num: 38

Candidate Starts for ThreeOh3D2_38:

(Start: 30 @35547 has 1 MA's), (Start: 38 @35589 has 291 MA's), (46, 35628), (52, 35664), (55, 35679), (65, 35721), (66, 35745), (76, 35790), (82, 35835), (86, 35871), (93, 35919), (96, 35931), (105, 36012), (106, 36015),

Gene: Thunderbird_37 Start: 35295, Stop: 35918, Start Num: 38

Candidate Starts for Thunderbird_37:

(Start: 30 @35253 has 1 MA's), (Start: 38 @35295 has 291 MA's), (46, 35334), (52, 35370), (55, 35385), (65, 35427), (66, 35451), (76, 35496), (82, 35541), (86, 35577), (93, 35625), (96, 35637), (105, 35718), (106, 35721),

Gene: Timmi_37 Start: 35300, Stop: 35923, Start Num: 38

Candidate Starts for Timmi_37:

(Start: 30 @35258 has 1 MA's), (Start: 38 @35300 has 291 MA's), (46, 35339), (52, 35375), (55, 35390), (65, 35432), (66, 35456), (82, 35546), (86, 35582), (93, 35630), (96, 35642), (105, 35723), (106, 35726),

Gene: TomBombadil_38 Start: 35585, Stop: 36208, Start Num: 38

Candidate Starts for TomBombadil_38:

(Start: 30 @35543 has 1 MA's), (Start: 38 @35585 has 291 MA's), (46, 35624), (52, 35660), (55, 35675), (65, 35717), (66, 35741), (76, 35786), (82, 35831), (86, 35867), (93, 35915), (96, 35927), (105, 36008), (106, 36011),

Gene: Tomlarah_38 Start: 35576, Stop: 36199, Start Num: 38

Candidate Starts for Tomlarah_38:

(Start: 30 @35534 has 1 MA's), (Start: 38 @35576 has 291 MA's), (46, 35615), (52, 35651), (55, 35666), (65, 35708), (76, 35777), (82, 35822), (86, 35858), (93, 35906), (96, 35918), (105, 35999), (106, 36002),

Gene: Toni_37 Start: 35292, Stop: 35915, Start Num: 38

Candidate Starts for Toni_37:

(Start: 30 @35250 has 1 MA's), (Start: 38 @35292 has 291 MA's), (46, 35331), (52, 35367), (55, 35382), (65, 35424), (76, 35493), (82, 35538), (86, 35574), (93, 35622), (96, 35634), (105, 35715), (106, 35718),

Gene: Tooj_38 Start: 35649, Stop: 36272, Start Num: 38

Candidate Starts for Tooj_38:

(Start: 30 @35607 has 1 MA's), (Start: 38 @35649 has 291 MA's), (46, 35688), (52, 35724), (55, 35739), (65, 35781), (76, 35850), (82, 35895), (86, 35931), (93, 35979), (96, 35991), (105, 36072), (106, 36075),

Gene: True_37 Start: 35289, Stop: 35912, Start Num: 38

Candidate Starts for True_37:

(Start: 30 @35247 has 1 MA's), (Start: 38 @35289 has 291 MA's), (46, 35328), (52, 35364), (55, 35379), (65, 35421), (66, 35445), (82, 35535), (86, 35571), (93, 35619), (96, 35631), (105, 35712), (106, 35715),

Gene: Trypo_38 Start: 35585, Stop: 36208, Start Num: 38

Candidate Starts for Trypo_38:

(Start: 30 @35543 has 1 MA's), (Start: 38 @35585 has 291 MA's), (46, 35624), (52, 35660), (55, 35675), (65, 35717), (66, 35741), (76, 35786), (82, 35831), (86, 35867), (93, 35915), (96, 35927), (105, 36008), (106, 36011),

Gene: TyrionL_37 Start: 35148, Stop: 35771, Start Num: 38

Candidate Starts for TyrionL_37:

(Start: 30 @35106 has 1 MA's), (Start: 38 @35148 has 291 MA's), (46, 35187), (52, 35223), (55, 35238), (65, 35280), (66, 35304), (76, 35349), (82, 35394), (86, 35430), (93, 35478), (96, 35490), (105, 35571), (106, 35574),

Gene: UAch1_38 Start: 35598, Stop: 36221, Start Num: 38

Candidate Starts for UAch1_38:

(Start: 30 @35556 has 1 MA's), (Start: 38 @35598 has 291 MA's), (46, 35637), (52, 35673), (55, 35688), (65, 35730), (66, 35754), (76, 35799), (82, 35844), (86, 35880), (93, 35928), (96, 35940), (105, 36021), (106, 36024),

Gene: UncleHowie_38 Start: 35288, Stop: 35911, Start Num: 38

Candidate Starts for UncleHowie_38:

(Start: 30 @35246 has 1 MA's), (Start: 38 @35288 has 291 MA's), (46, 35327), (52, 35363), (55, 35378), (65, 35420), (66, 35444), (76, 35489), (82, 35534), (86, 35570), (93, 35618), (96, 35630), (105, 35711), (106, 35714),

Gene: Usavi_38 Start: 35589, Stop: 36212, Start Num: 38

Candidate Starts for Usavi_38:

(Start: 30 @35547 has 1 MA's), (Start: 38 @35589 has 291 MA's), (46, 35628), (52, 35664), (55, 35679), (65, 35721), (66, 35745), (76, 35790), (82, 35835), (86, 35871), (93, 35919), (96, 35931), (105, 36012), (106, 36015),

Gene: Vaishali24_37 Start: 35250, Stop: 35873, Start Num: 38

Candidate Starts for Vaishali24_37:

(Start: 30 @35208 has 1 MA's), (Start: 38 @35250 has 291 MA's), (46, 35289), (52, 35325), (55, 35340), (65, 35382), (76, 35451), (82, 35496), (86, 35532), (93, 35580), (96, 35592), (105, 35673), (106, 35676),

Gene: Valjean_38 Start: 35581, Stop: 36204, Start Num: 38

Candidate Starts for Valjean_38:

(Start: 30 @35539 has 1 MA's), (Start: 38 @35581 has 291 MA's), (46, 35620), (52, 35656), (55, 35671), (65, 35713), (76, 35782), (82, 35827), (86, 35863), (93, 35911), (96, 35923), (105, 36004), (106, 36007),

Gene: Veritas_37 Start: 35151, Stop: 35774, Start Num: 38

Candidate Starts for Veritas_37:

(Start: 30 @35109 has 1 MA's), (Start: 38 @35151 has 291 MA's), (46, 35190), (52, 35226), (55, 35241), (65, 35283), (66, 35307), (76, 35352), (82, 35397), (86, 35433), (93, 35481), (96, 35493), (105, 35574), (106, 35577),

Gene: Vincenzo_36 Start: 36503, Stop: 37255, Start Num: 22

Candidate Starts for Vincenzo_36:

(Start: 20 @36461 has 1 MA's), (Start: 22 @36503 has 34 MA's), (29, 36569), (32, 36593), (39, 36632), (76, 36827), (85, 36905), (95, 36965), (102, 37028), (104, 37043), (106, 37052),

Gene: VioletZ_35 Start: 35851, Stop: 36603, Start Num: 22

Candidate Starts for VioletZ_35:

(Start: 20 @35809 has 1 MA's), (Start: 22 @35851 has 34 MA's), (26, 35896), (29, 35917), (32, 35941), (44, 36004), (45, 36010), (76, 36175), (77, 36187), (82, 36220), (83, 36226), (84, 36250), (85, 36253), (95, 36313), (97, 36322), (98, 36334), (104, 36391), (130, 36583),

Gene: Virapocalypse_38 Start: 35576, Stop: 36199, Start Num: 38

Candidate Starts for Virapocalypse_38:

(Start: 30 @35534 has 1 MA's), (Start: 38 @35576 has 291 MA's), (46, 35615), (52, 35651), (55, 35666), (65, 35708), (66, 35732), (76, 35777), (82, 35822), (86, 35858), (93, 35906), (96, 35918), (105, 35999), (106, 36002),

Gene: Virgeve_37 Start: 35356, Stop: 35979, Start Num: 38

Candidate Starts for Virgeve_37:

(Start: 30 @35314 has 1 MA's), (Start: 38 @35356 has 291 MA's), (46, 35395), (52, 35431), (55, 35446), (65, 35488), (66, 35512), (76, 35557), (82, 35602), (86, 35638), (93, 35686), (96, 35698), (105, 35779), (106, 35782),

Gene: Vista_38 Start: 35589, Stop: 36212, Start Num: 38

Candidate Starts for Vista_38:

(Start: 30 @35547 has 1 MA's), (Start: 38 @35589 has 291 MA's), (46, 35628), (52, 35664), (55, 35679), (65, 35721), (66, 35745), (76, 35790), (82, 35835), (86, 35871), (93, 35919), (96, 35931), (105, 36012), (106, 36015),

Gene: Vivaldi_38 Start: 35618, Stop: 36241, Start Num: 38

Candidate Starts for Vivaldi_38:

(Start: 30 @35576 has 1 MA's), (Start: 38 @35618 has 291 MA's), (46, 35657), (52, 35693), (55, 35708), (65, 35750), (66, 35774), (76, 35819), (82, 35864), (86, 35900), (93, 35948), (96, 35960), (105, 36041), (106, 36044),

Gene: Vortex_38 Start: 35295, Stop: 35918, Start Num: 38

Candidate Starts for Vortex_38:

(Start: 30 @35253 has 1 MA's), (Start: 38 @35295 has 291 MA's), (46, 35334), (52, 35370), (55, 35385), (65, 35427), (66, 35451), (82, 35541), (86, 35577), (93, 35625), (96, 35637), (105, 35718), (106, 35721),

Gene: Waleliano_35 Start: 35778, Stop: 36530, Start Num: 22

Candidate Starts for Waleliano_35:

(Start: 20 @35736 has 1 MA's), (Start: 22 @35778 has 34 MA's), (26, 35823), (29, 35844), (32, 35868), (44, 35931), (45, 35937), (47, 35949), (76, 36102), (77, 36114), (82, 36147), (83, 36153), (85, 36180), (95, 36240), (97, 36249), (104, 36318), (130, 36510),

Gene: Wallhey_37 Start: 35152, Stop: 35775, Start Num: 38

Candidate Starts for Wallhey_37:

(Start: 30 @35110 has 1 MA's), (Start: 38 @35152 has 291 MA's), (46, 35191), (52, 35227), (55, 35242), (65, 35284), (66, 35308), (76, 35353), (82, 35398), (86, 35434), (93, 35482), (96, 35494), (105, 35575), (106, 35578),

Gene: Waterdiva_38 Start: 35581, Stop: 36204, Start Num: 38

Candidate Starts for Waterdiva_38:

(Start: 30 @35539 has 1 MA's), (Start: 38 @35581 has 291 MA's), (46, 35620), (52, 35656), (55, 35671), (65, 35713), (66, 35737), (76, 35782), (82, 35827), (86, 35863), (93, 35911), (96, 35923), (105, 36004), (106, 36007),

Gene: Weher20_38 Start: 35580, Stop: 36203, Start Num: 38

Candidate Starts for Weher20_38:

(Start: 30 @35538 has 1 MA's), (Start: 38 @35580 has 291 MA's), (46, 35619), (52, 35655), (55, 35670), (65, 35712), (66, 35736), (76, 35781), (82, 35826), (86, 35862), (93, 35910), (96, 35922), (105, 36003), (106, 36006),

Gene: Windsor_37 Start: 35285, Stop: 35908, Start Num: 38

Candidate Starts for Windsor_37:

(Start: 30 @35243 has 1 MA's), (Start: 38 @35285 has 291 MA's), (46, 35324), (52, 35360), (55, 35375), (65, 35417), (66, 35441), (76, 35486), (82, 35531), (86, 35567), (93, 35615), (96, 35627), (105, 35708), (106, 35711),

Gene: Wooper_33 Start: 30666, Stop: 31280, Start Num: 38

Candidate Starts for Wooper_33:

(Start: 38 @30666 has 291 MA's), (43, 30681), (48, 30714), (52, 30735), (81, 30903), (82, 30906), (108, 31089), (120, 31155),

Gene: Xavier_37 Start: 35302, Stop: 35925, Start Num: 38

Candidate Starts for Xavier_37:

(Start: 30 @35260 has 1 MA's), (Start: 38 @35302 has 291 MA's), (46, 35341), (52, 35377), (55, 35392), (65, 35434), (66, 35458), (76, 35503), (82, 35548), (86, 35584), (93, 35632), (96, 35644), (105, 35725), (106, 35728),

Gene: Xincheng_34 Start: 35233, Stop: 35985, Start Num: 22

Candidate Starts for Xincheng_34:

(Start: 20 @35191 has 1 MA's), (Start: 22 @35233 has 34 MA's), (26, 35278), (29, 35299), (32, 35323), (44, 35386), (45, 35392), (60, 35467), (76, 35557), (77, 35569), (82, 35602), (83, 35608), (85, 35635), (95, 35695), (97, 35704), (102, 35758), (104, 35773), (130, 35965),

Gene: Yago84_31 Start: 29662, Stop: 30258, Start Num: 38

Candidate Starts for Yago84_31:

(11, 29104), (14, 29206), (Start: 38 @29662 has 291 MA's), (57, 29752), (59, 29758), (85, 29929), (86, 29932), (91, 29971), (101, 30028), (102, 30040), (115, 30106), (130, 30244),

Gene: Yoshand_38 Start: 35588, Stop: 36211, Start Num: 38

Candidate Starts for Yoshand_38:

(Start: 30 @35546 has 1 MA's), (Start: 38 @35588 has 291 MA's), (46, 35627), (52, 35663), (55, 35678), (65, 35720), (66, 35744), (76, 35789), (82, 35834), (86, 35870), (93, 35918), (96, 35930), (105, 36011), (106, 36014),

Gene: YouGoGlencoco_38 Start: 35583, Stop: 36206, Start Num: 38

Candidate Starts for YouGoGlencoco_38:

(Start: 30 @35541 has 1 MA's), (Start: 38 @35583 has 291 MA's), (46, 35622), (52, 35658), (55, 35673), (65, 35715), (66, 35739), (76, 35784), (82, 35829), (86, 35865), (93, 35913), (96, 35925), (105, 36006), (106, 36009),

Gene: Zaider_39 Start: 35813, Stop: 36436, Start Num: 38

Candidate Starts for Zaider_39:

(Start: 30 @35771 has 1 MA's), (Start: 38 @35813 has 291 MA's), (46, 35852), (52, 35888), (55, 35903), (65, 35945), (66, 35969), (76, 36014), (82, 36059), (86, 36095), (93, 36143), (96, 36155), (105, 36236), (106, 36239),

Gene: Zelda_38 Start: 35630, Stop: 36253, Start Num: 38

Candidate Starts for Zelda_38:

(Start: 30 @35588 has 1 MA's), (Start: 38 @35630 has 291 MA's), (46, 35669), (52, 35705), (55, 35720), (65, 35762), (66, 35786), (76, 35831), (82, 35876), (86, 35912), (93, 35960), (96, 35972), (105, 36053), (106, 36056),

Gene: Zemanar_36 Start: 35781, Stop: 36533, Start Num: 22

Candidate Starts for Zemanar_36:

(Start: 20 @35739 has 1 MA's), (Start: 22 @35781 has 34 MA's), (26, 35826), (29, 35847), (32, 35871), (44, 35934), (45, 35940), (76, 36105), (77, 36117), (82, 36150), (83, 36156), (85, 36183), (95, 36243), (97, 36252), (104, 36321), (130, 36513),

Gene: Zenteno07_42 Start: 35203, Stop: 35829, Start Num: 38

Candidate Starts for Zenteno07_42:

(5, 34498), (7, 34528), (9, 34612), (Start: 38 @35203 has 291 MA's), (52, 35281), (65, 35338), (76, 35407), (92, 35533), (102, 35608), (130, 35815),

Gene: Zonia_38 Start: 35602, Stop: 36225, Start Num: 38

Candidate Starts for Zonia_38:

(Start: 30 @35560 has 1 MA's), (Start: 38 @35602 has 291 MA's), (46, 35641), (52, 35677), (55, 35692), (65, 35734), (66, 35758), (76, 35803), (82, 35848), (86, 35884), (93, 35932), (96, 35944), (105, 36025), (106, 36028),