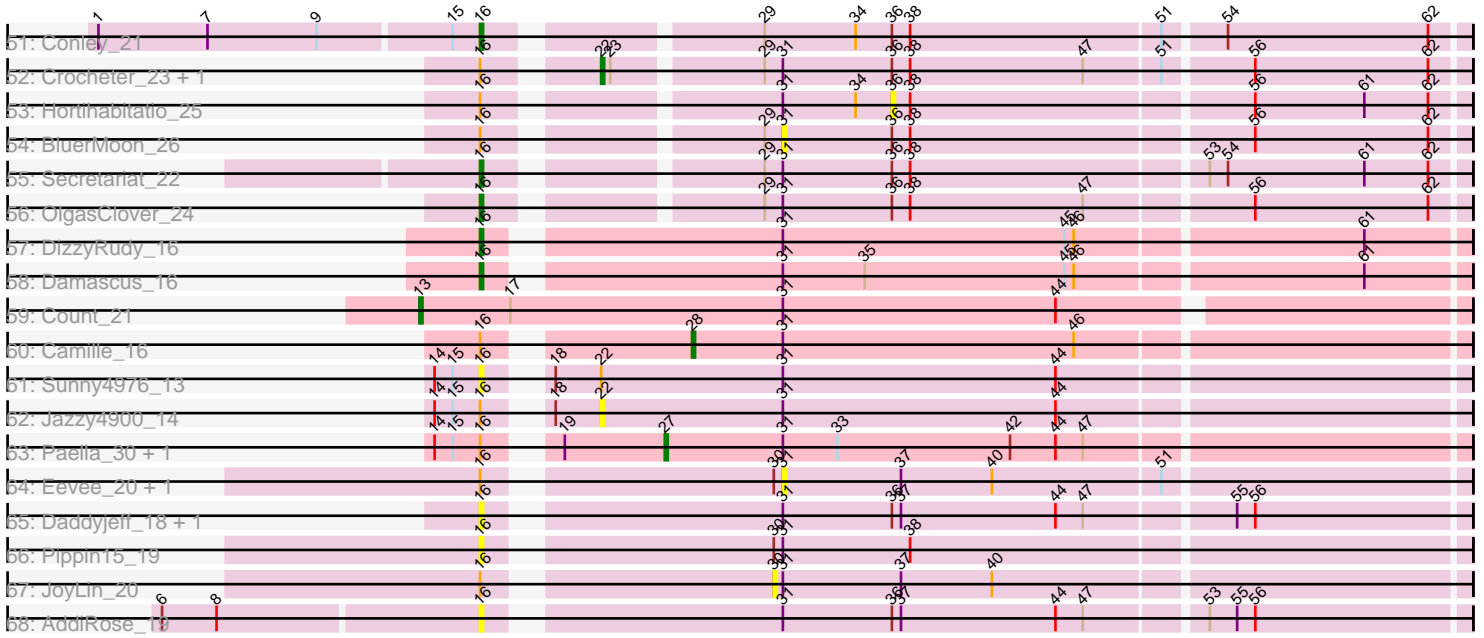


Pham 172666



Note: Tracks are now grouped by subcluster and scaled. Switching in subcluster is indicated by changes in track color. Track scale is now set by default to display the region 30 bp upstream of start 1 to 30 bp downstream of the last possible start. If this default region is judged to be packed too tightly with annotated starts, the track will be further scaled to only show that region of the ORF with annotated starts. This action will be indicated by adding "Zoomed" to the title. For starts, yellow indicates the location of called starts comprised solely of Glimmer/GeneMark auto-annotations, green indicates the location of called starts with at least 1 manual gene annotation.

Pham 172666 Report

This analysis was run 11/02/24 on database version 579.

Pham number 172666 has 188 members, 29 are drafts.

Phages represented in each track:

- Track 1 : Heisenberger_14, Circum_14
- Track 2 : Hankly_13, KeaneyLin_13, GoCrazy_13, Benllo_13
- Track 3 : Elsa_14, Arcadia_14, Correa_14, Kardesai_13, Mooshroom_14, Dynamite_14, Xenomorph_13, Nason_14, NapoleonB_14, BenitoAntonio_14, JEGGS_14
- Track 4 : Mudcat_14, Tribby_14, Cheesy_14
- Track 5 : Inked_17
- Track 6 : Nightmare_16, ScienceWizSam_16, Darby_15, AreFloNak_15, Breylor17_16, CastorTray_17, Synepsis_14, DevitoJr_15, Nivinsha_15, Teacup_15, Trustiboi_16, Gordon_15, Tatanka_14
- Track 7 : ElephantMan_15, Brunswick_15, CapnMurica_15, Niktson_15
- Track 8 : MiniBagel_15, Tenno_16
- Track 9 : Giantsbane_17
- Track 10 : Tokki_16, LilHuddy_16
- Track 11 : Phaby_16, Shepard_16
- Track 12 : Ingrid_16, Loretta_16
- Track 13 : MediumFry_15, Caterpillar_15
- Track 14 : Truckee_15, Makai_16
- Track 15 : TrixiePhattel_15
- Track 16 : Lewando_18
- Track 17 : Argan_14, Uzumaki_15
- Track 18 : Leathea_15
- Track 19 : Renaldo_20
- Track 20 : Phaila_14
- Track 21 : GantcherGoblin_14, Zeina_15
- Track 22 : Shiba_15, DoctorPepper_15, ProfFrink_15, Michelle_15, MrAaronian_15, Djungelskog_15, Salk_15, Egad_15, Stayer_15, BronxBay_15, Sloopyjoe_15, Linda_15, Raunak_15, StarLord_15
- Track 23 : Sporto_16
- Track 24 : TonyStarch_16
- Track 25 : FidgetOrca_16, Maya_16, Madamoto_16, CherryBlossom_16, FrodoSwaggins_16, IceWarrior_16, Hoshi_16, Jaylociraptor_16, Esketit_16, Meibysrarus_16, Indigenous_16, Soshi_16, Rima_16, GirlPower_15, DrGrey_16, Namu_16, TieDye_15, TaidaOne_16, Spectropatronm_16, OlympicHelado_16, Popy_16
- Track 26 : PherryCruz_10, GoblinVoyage_11, Doxi13_11, RavenPuff_10
- Track 27 : RosaAsantewaa_11

- Track 28 : SheRa_11, HotFries_10, Moozy_11, Bilo_11, Annihilus_11
- Track 29 : Scap1_11
- Track 30 : LibertyBell_14
- Track 31 : Regigigas_14, FromIndy_14, Miek_13, CricKo_13, SendItCS_12, Rainydai_13, Thiqqums_13
- Track 32 : Bing_16
- Track 33 : Kardashian_14
- Track 34 : ClubPenguin_14
- Track 35 : Pepy6_027
- Track 36 : Poco6_028
- Track 37 : Schwartz33_25
- Track 38 : Phepper_24, Runhaar_24, Eddiemania_25, Burley_24, Nadmeg_24, Vardy_24
- Track 39 : Arataki_22, ShaggyRogers_27
- Track 40 : AlainaMarie_24, Aflac_24, Chikenjars_24, Duffington_24, Jodelie19_24, TenaciousP_24, Nithya_24, EndAve_24, Figliar_24
- Track 41 : Petite_22, NoPickles_21
- Track 42 : Fazel_22
- Track 43 : JulesRay_23, Avazak_21, FortCran_21, Captrips_21, Artorias_21
- Track 44 : Magel_21, Gill_21, Tanis_21, Capybara_21, Gravy_21, Kerry_21, Odesza_21, Roney_21
- Track 45 : Rickmore_22
- Track 46 : Madvan_24, Gusicorn_26, Hydrus_25, Zeph_25
- Track 47 : Perkunas_23
- Track 48 : Pherobrine_23, Mysticmoon_24
- Track 49 : OhMyWard_24, Mossy_25
- Track 50 : Kenosha_23
- Track 51 : Conley_21
- Track 52 : Crocheter_23, Untouchable_23
- Track 53 : Hortihabitatio_25
- Track 54 : BluerMoon_26
- Track 55 : Secretariat_22
- Track 56 : OlgasClover_24
- Track 57 : DizzyRudy_16
- Track 58 : Damascus_16
- Track 59 : Count_21
- Track 60 : Camille_16
- Track 61 : Sunny4976_13
- Track 62 : Jazzy4900_14
- Track 63 : Paella_30, Qui_30
- Track 64 : Eevee_20, Yotsuba_20
- Track 65 : Daddyjeff_18, Serenabean_18
- Track 66 : Pippin15_19
- Track 67 : JoyLin_20
- Track 68 : AddiRose_19

Summary of Final Annotations (See graph section above for start numbers):

The start number called the most often in the published annotations is 16, it was called in 123 of the 159 non-draft genes in the pham.

Genes that call this "Most Annotated" start:

- AddiRose_19, Aflac_24, AlainaMarie_24, Annihilus_11, Arcadia_14, AreFloNak_15, Argan_14, Artorias_21, Avazak_21, BenitoAntonio_14, Benllo_13, Bilo_11, Bing_16, Breylor17_16, BronxBay_15, Brunswick_15, Burley_24, CapnMurica_15, Captrips_21, Capybara_21, CastorTray_17, Caterpillar_15, Cheesy_14, Chikenjars_24, Circum_14, Conley_21, Correa_14, Daddyjeff_18, Damascus_16, Darby_15, DevitoJr_15, DizzyRudy_16, Djungelskog_15, DoctorPepper_15, Doxi13_11, Duffington_24, Dynamite_14, Eddiemania_25, Egad_15, ElephantMan_15, Elsa_14, EndAve_24, Fazel_22, Figliar_24, FortCran_21, GantcherGoblin_14, Giantsbane_17, Gill_21, GoCrazy_13, GoblinVoyage_11, Gordon_15, Gravy_21, Gusicorn_26, Hankly_13, Heisenberger_14, HotFries_10, Hydrus_25, Ingrid_16, Inked_17, JEGGS_14, Jodelie19_24, JulesRay_23, Kardashian_14, Kardesai_13, KeaneyLin_13, Kenosha_23, Kerry_21, Leathea_15, Lewando_18, LilHuddy_16, Linda_15, Loretta_16, Madvan_24, Magel_21, Makai_16, MediumFry_15, Michelle_15, MiniBagel_15, Mooshroom_14, Moozy_11, Mossy_25, MrAaronian_15, Mudcat_14, Mysticmoon_24, Nadmeg_24, NapoleonB_14, Nason_14, Nightmare_16, Niktson_15, Nithya_24, Nivinsha_15, NoPickles_21, Odesza_21, OhMyWard_24, OlgasClover_24, Pepy6_027, Perkunas_23, Petito_22, Phaby_16, Phepper_24, Pherobrine_23, PherryCruz_10, Pippin15_19, Poco6_028, ProfFrink_15, Raunak_15, RavenPuff_10, Rickmore_22, Roney_21, RosaAsantewaa_11, Runhaar_24, Salk_15, Schwartz33_25, ScienceWizSam_16, Secretariat_22, Serenabean_18, SheRa_11, Shepard_16, Shiba_15, Sloopypjoe_15, Sporto_16, StarLord_15, Stayer_15, Sunny4976_13, Synepsis_14, Tanis_21, Tatanka_14, Teacup_15, TenaciousP_24, Tenno_16, Tokki_16, Tribby_14, Truckee_15, Trustiboi_16, Uzumaki_15, Vardy_24, Xenomorph_13, Zeina_15, Zeph_25,

Genes that have the "Most Annotated" start but do not call it:

- Arataki_22, BluerMoon_26, Camille_16, Crocheter_23, Eevee_20, Hortihabitatio_25, Jazzy4900_14, JoyLin_20, LibertyBell_14, Paella_30, Phaila_14, Qui_30, Renaldo_20, ShaggyRogers_27, TrixiePhattel_15, Untouchable_23, Yotsuba_20,

Genes that do not have the "Most Annotated" start:

- CherryBlossom_16, ClubPenguin_14, Count_21, CricKo_13, DrGrey_16, Esketit_16, FidgetOrca_16, FrodoSwaggins_16, FromIndy_14, GirlPower_15, Hoshi_16, IceWarrior_16, Indigenous_16, Jaylociraptor_16, Madamato_16, Maya_16, Meibysrarus_16, Miek_13, Namu_16, OlympicHelado_16, Popy_16, Rainydai_13, Regigigas_14, Rima_16, Scap1_11, SendItCS_12, Soshi_16, Spectropatronm_16, TaidaOne_16, Thiqqums_13, TieDye_15, TonyStarch_16,

Summary by start number:

Start 13:

- Found in 1 of 188 (0.5%) of genes in pham
- Manual Annotations of this start: 1 of 159
- Called 100.0% of time when present
- Phage (with cluster) where this start called: Count_21 (EL),

Start 15:

- Found in 78 of 188 (41.5%) of genes in pham
- Manual Annotations of this start: 6 of 159

- Called 10.3% of time when present
- Phage (with cluster) where this start called: CricKo_13 (BI4), FromIndy_14 (BI4), Miek_13 (BI4), Rainydai_13 (BI4), Regigigas_14 (BI4), SendItCS_12 (BI4), Thiqqums_13 (BI4), TonyStarch_16 (BI1),

Start 16:

- Found in 156 of 188 (83.0%) of genes in pham
- Manual Annotations of this start: 123 of 159
- Called 89.1% of time when present
- Phage (with cluster) where this start called: AddiRose_19 (JA), Aflac_24 (DJ), AlainaMarie_24 (DJ), Annihilus_11 (BI2), Arcadia_14 (AM), AreFloNak_15 (AU1), Argan_14 (AU6), Artorias_21 (DJ), Avazak_21 (DJ), BenitoAntonio_14 (AM), Benllo_13 (AM), Bilo_11 (BI2), Bing_16 (BI5), Breylor17_16 (AU1), BronxBay_15 (AW), Brunswick_15 (AU1), Burley_24 (DJ), CapnMurica_15 (AU1), Captrips_21 (DJ), Copybara_21 (DJ), CastorTray_17 (AU1), Caterpillar_15 (AU4), Cheesy_14 (AM), Chikenjars_24 (DJ), Circum_14 (AM), Conley_21 (DJ), Correa_14 (AM), Daddyjeff_18 (JA), Damascus_16 (EL), Darby_15 (AU1), DevitoJr_15 (AU1), DizzyRudy_16 (EL), Djungelskog_15 (AW), DoctorPepper_15 (AW), Doxi13_11 (BI2), Duffington_24 (DJ), Dynamite_14 (AM), Eddiemania_25 (DJ), Egad_15 (AW), ElephantMan_15 (AU1), Elsa_14 (AM), EndAve_24 (DJ), Fazel_22 (DJ), Figliar_24 (DJ), FortCran_21 (DJ), GantcherGoblin_14 (AU6), Giantsbane_17 (AU2), Gill_21 (DJ), GoCrazy_13 (AM), GoblinVoyage_11 (BI2), Gordon_15 (AU1), Gravy_21 (DJ), Gusicorn_26 (DJ), Hankly_13 (AM), Heisenberger_14 (AM), HotFries_10 (BI2), Hydrus_25 (DJ), Ingrid_16 (AU3), Inked_17 (AU), JEGGS_14 (AM), Jodelie19_24 (DJ), JulesRay_23 (DJ), Kardashian_14 (BI6), Kardesai_13 (AM), KeaneyLin_13 (AM), Kenosha_23 (DJ), Kerry_21 (DJ), Leathea_15 (AU6), Lewando_18 (AU6), LilHuddy_16 (AU2), Linda_15 (AW), Loretta_16 (AU3), Madvan_24 (DJ), Magel_21 (DJ), Makai_16 (AU5), MediumFry_15 (AU4), Michelle_15 (AW), MiniBagel_15 (AU1), Mooshroom_14 (AM), Moozy_11 (BI2), Mossy_25 (DJ), MrAaronian_15 (AW), Mudcat_14 (AM), Mysticmoon_24 (DJ), Nadmeg_24 (DJ), NapoleonB_14 (AM), Nason_14 (AM), Nightmare_16 (AU1), Niktson_15 (AU1), Nithya_24 (DJ), Nivinsha_15 (AU1), NoPickles_21 (DJ), Odesza_21 (DJ), OhMyWard_24 (DJ), OlgasClover_24 (DJ), Pepy6_027 (CC), Perkunas_23 (DJ), Petite_22 (DJ), Phaby_16 (AU2), Phepper_24 (DJ), Pherobrine_23 (DJ), PherryCruz_10 (BI2), Pippin15_19 (JA), Poco6_028 (CC), ProfFrink_15 (AW), Raunak_15 (AW), RavenPuff_10 (BI2), Rickmore_22 (DJ), Roney_21 (DJ), RosaAsantewaa_11 (BI2), Runhaar_24 (DJ), Salk_15 (AW), Schwartz33_25 (DJ), ScienceWizSam_16 (AU1), Secretariat_22 (DJ), Serenabean_18 (JA), SheRa_11 (BI2), Shepard_16 (AU2), Shiba_15 (AW), Sloopyjoe_15 (AW), Sporto_16 (AW), StarLord_15 (AW), Stayer_15 (AW), Sunny4976_13 (FI), Synopsis_14 (AU1), Tanis_21 (DJ), Tatanka_14 (AU1), Teacup_15 (AU1), TenaciousP_24 (DJ), Tenno_16 (AU1), Tokki_16 (AU2), Tribby_14 (AM), Truckee_15 (AU5), Trustiboi_16 (AU1), Uzumaki_15 (AU6), Vardy_24 (DJ), Xenomorph_13 (AM), Zeina_15 (AU6), Zeph_25 (DJ),

Start 20:

- Found in 3 of 188 (1.6%) of genes in pham
- Manual Annotations of this start: 1 of 159
- Called 33.3% of time when present
- Phage (with cluster) where this start called: ClubPenguin_14 (BI7),

Start 21:

- Found in 1 of 188 (0.5%) of genes in pham
- No Manual Annotations of this start.

- Called 100.0% of time when present
- Phage (with cluster) where this start called: Renaldo_20 (AU6),

Start 22:

- Found in 11 of 188 (5.9%) of genes in pham
- Manual Annotations of this start: 2 of 159
- Called 27.3% of time when present
- Phage (with cluster) where this start called: Crocheter_23 (DJ), Jazzy4900_14 (FI), Untouchable_23 (DJ),

Start 25:

- Found in 40 of 188 (21.3%) of genes in pham
- Manual Annotations of this start: 23 of 159
- Called 57.5% of time when present
- Phage (with cluster) where this start called: CherryBlossom_16 (BI1), DrGrey_16 (BI1), Esketit_16 (BI1), FidgetOrca_16 (BI1), FrodoSwaggins_16 (BI1), GirlPower_15 (BI1), Hoshi_16 (BI1), IceWarrior_16 (BI1), Indigenous_16 (BI1), Jaylociraptor_16 (BI1), LibertyBell_14 (BI3), Madamato_16 (BI1), Maya_16 (BI1), Meibysrarus_16 (BI1), Namu_16 (BI1), OlympicHelado_16 (BI1), Popy_16 (BI1), Rima_16 (BI1), Scap1_11 (BI2), Soshi_16 (BI1), Spectropatronm_16 (BI1), TaidaOne_16 (BI1), TieDye_15 (BI1),

Start 27:

- Found in 27 of 188 (14.4%) of genes in pham
- Manual Annotations of this start: 2 of 159
- Called 7.4% of time when present
- Phage (with cluster) where this start called: Paella_30 (FK), Qui_30 (FK),

Start 28:

- Found in 10 of 188 (5.3%) of genes in pham
- Manual Annotations of this start: 1 of 159
- Called 10.0% of time when present
- Phage (with cluster) where this start called: Camille_16 (EL),

Start 30:

- Found in 4 of 188 (2.1%) of genes in pham
- No Manual Annotations of this start.
- Called 25.0% of time when present
- Phage (with cluster) where this start called: JoyLin_20 (JA),

Start 31:

- Found in 163 of 188 (86.7%) of genes in pham
- No Manual Annotations of this start.
- Called 4.3% of time when present
- Phage (with cluster) where this start called: Arataki_22 (DJ), BluerMoon_26 (DJ), Eevee_20 (JA), Phaila_14 (AU6), ShaggyRogers_27 (DJ), TrixiePhattel_15 (AU6), Yotsuba_20 (JA),

Start 36:

- Found in 57 of 188 (30.3%) of genes in pham
- No Manual Annotations of this start.
- Called 1.8% of time when present
- Phage (with cluster) where this start called: Hortihabitatio_25 (DJ),

Summary by clusters:

There are 22 clusters represented in this pham: DJ, FI, FK, JA, AU1, AU3, AU2, AU5, AU4, AU6, EL, CC, AM, AU, AW, BI6, BI7, BI4, BI5, BI2, BI3, BI1,

Info for manual annotations of cluster AM:

- Start number 16 was manually annotated 19 times for cluster AM.

Info for manual annotations of cluster AU:

- Start number 16 was manually annotated 1 time for cluster AU.

Info for manual annotations of cluster AU1:

- Start number 16 was manually annotated 17 times for cluster AU1.

Info for manual annotations of cluster AU2:

- Start number 16 was manually annotated 5 times for cluster AU2.

Info for manual annotations of cluster AU3:

- Start number 16 was manually annotated 2 times for cluster AU3.

Info for manual annotations of cluster AU4:

- Start number 16 was manually annotated 2 times for cluster AU4.

Info for manual annotations of cluster AU5:

- Start number 16 was manually annotated 2 times for cluster AU5.

Info for manual annotations of cluster AU6:

- Start number 16 was manually annotated 5 times for cluster AU6.

Info for manual annotations of cluster AW:

- Start number 16 was manually annotated 14 times for cluster AW.

Info for manual annotations of cluster BI1:

- Start number 15 was manually annotated 1 time for cluster BI1.
- Start number 25 was manually annotated 21 times for cluster BI1.

Info for manual annotations of cluster BI2:

- Start number 16 was manually annotated 10 times for cluster BI2.
- Start number 25 was manually annotated 1 time for cluster BI2.

Info for manual annotations of cluster BI3:

- Start number 25 was manually annotated 1 time for cluster BI3.

Info for manual annotations of cluster BI4:

- Start number 15 was manually annotated 5 times for cluster BI4.

Info for manual annotations of cluster BI5:

- Start number 16 was manually annotated 1 time for cluster BI5.

Info for manual annotations of cluster BI6:

- Start number 16 was manually annotated 1 time for cluster BI6.

Info for manual annotations of cluster BI7:

- Start number 20 was manually annotated 1 time for cluster BI7.

Info for manual annotations of cluster DJ:

- Start number 16 was manually annotated 42 times for cluster DJ.
- Start number 22 was manually annotated 2 times for cluster DJ.

Info for manual annotations of cluster EL:

- Start number 13 was manually annotated 1 time for cluster EL.
- Start number 16 was manually annotated 2 times for cluster EL.
- Start number 28 was manually annotated 1 time for cluster EL.

Info for manual annotations of cluster FK:

- Start number 27 was manually annotated 2 times for cluster FK.

Gene Information:

Gene: AddiRose_19 Start: 14971, Stop: 15276, Start Num: 16

Candidate Starts for AddiRose_19:

(6, 14869), (8, 14887), (Start: 16 @14971 has 123 MA's), (31, 15058), (36, 15094), (37, 15097), (44, 15148), (47, 15157), (53, 15193), (55, 15202), (56, 15208),

Gene: Aflac_24 Start: 18141, Stop: 18443, Start Num: 16

Candidate Starts for Aflac_24:

(Start: 16 @18141 has 123 MA's), (29, 18219), (31, 18225), (36, 18261), (38, 18267), (56, 18375), (62, 18432),

Gene: AlainaMarie_24 Start: 18128, Stop: 18430, Start Num: 16

Candidate Starts for AlainaMarie_24:

(Start: 16 @18128 has 123 MA's), (29, 18206), (31, 18212), (36, 18248), (38, 18254), (56, 18362), (62, 18419),

Gene: Annihilus_11 Start: 8133, Stop: 8435, Start Num: 16

Candidate Starts for Annihilus_11:

(Start: 16 @8133 has 123 MA's), (24, 8169), (Start: 25 @8175 has 23 MA's), (29, 8211), (31, 8217), (33, 8235), (43, 8304), (44, 8307), (46, 8313), (56, 8367), (62, 8424),

Gene: Arataki_22 Start: 17320, Stop: 17538, Start Num: 31

Candidate Starts for Arataki_22:

(Start: 16 @17236 has 123 MA's), (Start: 22 @17266 has 2 MA's), (23, 17269), (29, 17314), (31, 17320), (36, 17356), (38, 17362), (47, 17419), (56, 17470), (62, 17527),

Gene: Arcadia_14 Start: 10729, Stop: 11031, Start Num: 16

Candidate Starts for Arcadia_14:

(Start: 16 @10729 has 123 MA's), (31, 10813), (43, 10900),

Gene: AreFloNak_15 Start: 11529, Stop: 11828, Start Num: 16

Candidate Starts for AreFloNak_15:

(10, 11481), (14, 11514), (Start: 15 @11520 has 6 MA's), (Start: 16 @11529 has 123 MA's), (Start: 27 @11571 has 2 MA's), (31, 11610), (39, 11673), (44, 11700), (61, 11796),

Gene: Argan_14 Start: 10931, Stop: 11233, Start Num: 16

Candidate Starts for Argan_14:

(Start: 16 @10931 has 123 MA's), (23, 10961), (Start: 25 @10970 has 23 MA's), (31, 11015), (35, 11042), (41, 11087), (43, 11102), (44, 11105), (56, 11165),

Gene: Artorias_21 Start: 15482, Stop: 15784, Start Num: 16

Candidate Starts for Artorias_21:

(1, 15359), (7, 15395), (9, 15431), (Start: 15 @15473 has 6 MA's), (Start: 16 @15482 has 123 MA's), (29, 15560), (34, 15590), (36, 15602), (38, 15608), (51, 15689), (54, 15707), (56, 15716), (62, 15773),

Gene: Avazak_21 Start: 15489, Stop: 15791, Start Num: 16

Candidate Starts for Avazak_21:

(1, 15366), (7, 15402), (9, 15438), (Start: 15 @15480 has 6 MA's), (Start: 16 @15489 has 123 MA's), (29, 15567), (34, 15597), (36, 15609), (38, 15615), (51, 15696), (54, 15714), (56, 15723), (62, 15780),

Gene: BenitoAntonio_14 Start: 10337, Stop: 10639, Start Num: 16

Candidate Starts for BenitoAntonio_14:

(Start: 16 @10337 has 123 MA's), (31, 10421), (43, 10508),

Gene: Benllo_13 Start: 10339, Stop: 10641, Start Num: 16

Candidate Starts for Benllo_13:

(Start: 16 @10339 has 123 MA's), (31, 10423), (43, 10510), (53, 10558),

Gene: Bilo_11 Start: 8625, Stop: 8927, Start Num: 16

Candidate Starts for Bilo_11:

(Start: 16 @8625 has 123 MA's), (24, 8661), (Start: 25 @8667 has 23 MA's), (29, 8703), (31, 8709), (33, 8727), (43, 8796), (44, 8799), (46, 8805), (56, 8859), (62, 8916),

Gene: Bing_16 Start: 10620, Stop: 10940, Start Num: 16

Candidate Starts for Bing_16:

(Start: 15 @10611 has 6 MA's), (Start: 16 @10620 has 123 MA's), (Start: 25 @10668 has 23 MA's), (29, 10710), (31, 10716), (44, 10806), (48, 10836), (50, 10839), (56, 10872),

Gene: BluerMoon_26 Start: 18219, Stop: 18437, Start Num: 31

Candidate Starts for BluerMoon_26:

(Start: 16 @18135 has 123 MA's), (29, 18213), (31, 18219), (36, 18255), (38, 18261), (56, 18369), (62, 18426),

Gene: Breylor17_16 Start: 12194, Stop: 12493, Start Num: 16

Candidate Starts for Breylor17_16:

(10, 12146), (14, 12179), (Start: 15 @12185 has 6 MA's), (Start: 16 @12194 has 123 MA's), (Start: 27 @12236 has 2 MA's), (31, 12275), (39, 12338), (44, 12365), (61, 12461),

Gene: BronxBay_15 Start: 10761, Stop: 11060, Start Num: 16

Candidate Starts for BronxBay_15:

(Start: 16 @10761 has 123 MA's), (23, 10791), (31, 10842), (35, 10869), (43, 10929),

Gene: Brunswick_15 Start: 11644, Stop: 11943, Start Num: 16

Candidate Starts for Brunswick_15:

(10, 11596), (Start: 15 @11635 has 6 MA's), (Start: 16 @11644 has 123 MA's), (Start: 27 @11686 has 2 MA's), (31, 11725), (39, 11788), (44, 11815), (61, 11911),

Gene: Burley_24 Start: 17881, Stop: 18183, Start Num: 16

Candidate Starts for Burley_24:

(Start: 16 @17881 has 123 MA's), (29, 17959), (31, 17965), (36, 18001), (38, 18007), (47, 18064), (51, 18088), (56, 18115), (62, 18172),

Gene: Camille_16 Start: 10644, Stop: 10892, Start Num: 28

Candidate Starts for Camille_16:

(Start: 16 @10587 has 123 MA's), (Start: 28 @10644 has 1 MA's), (31, 10674), (46, 10770),

Gene: CapnMurica_15 Start: 12744, Stop: 13043, Start Num: 16

Candidate Starts for CapnMurica_15:

(10, 12696), (Start: 15 @12735 has 6 MA's), (Start: 16 @12744 has 123 MA's), (Start: 27 @12786 has 2 MA's), (31, 12825), (39, 12888), (44, 12915), (61, 13011),

Gene: Captrips_21 Start: 15489, Stop: 15791, Start Num: 16

Candidate Starts for Captrips_21:

(1, 15366), (7, 15402), (9, 15438), (Start: 15 @15480 has 6 MA's), (Start: 16 @15489 has 123 MA's), (29, 15567), (34, 15597), (36, 15609), (38, 15615), (51, 15696), (54, 15714), (56, 15723), (62, 15780),

Gene: Capybara_21 Start: 15208, Stop: 15510, Start Num: 16

Candidate Starts for Capybara_21:

(Start: 15 @15199 has 6 MA's), (Start: 16 @15208 has 123 MA's), (29, 15286), (34, 15316), (36, 15328), (38, 15334), (51, 15415), (53, 15427), (56, 15442), (62, 15499),

Gene: CastorTray_17 Start: 12045, Stop: 12344, Start Num: 16

Candidate Starts for CastorTray_17:

(10, 11997), (14, 12030), (Start: 15 @12036 has 6 MA's), (Start: 16 @12045 has 123 MA's), (Start: 27 @12087 has 2 MA's), (31, 12126), (39, 12189), (44, 12216), (61, 12312),

Gene: Caterpillar_15 Start: 11214, Stop: 11513, Start Num: 16

Candidate Starts for Caterpillar_15:

(14, 11199), (Start: 16 @11214 has 123 MA's), (Start: 27 @11256 has 2 MA's), (31, 11295), (39, 11358), (44, 11385),

Gene: Cheesy_14 Start: 10339, Stop: 10641, Start Num: 16

Candidate Starts for Cheesy_14:

(Start: 16 @10339 has 123 MA's), (31, 10423), (43, 10510),

Gene: CherryBlossom_16 Start: 11145, Stop: 11411, Start Num: 25

Candidate Starts for CherryBlossom_16:

(Start: 15 @11088 has 6 MA's), (Start: 25 @11145 has 23 MA's), (31, 11193), (56, 11343),

Gene: Chikenjars_24 Start: 18131, Stop: 18433, Start Num: 16

Candidate Starts for Chikenjars_24:

(Start: 16 @18131 has 123 MA's), (29, 18209), (31, 18215), (36, 18251), (38, 18257), (56, 18365), (62, 18422),

Gene: Circum_14 Start: 10342, Stop: 10644, Start Num: 16

Candidate Starts for Circum_14:

(Start: 16 @10342 has 123 MA's), (31, 10426), (43, 10513), (53, 10561),

Gene: ClubPenguin_14 Start: 11154, Stop: 11441, Start Num: 20

Candidate Starts for ClubPenguin_14:

(Start: 15 @11127 has 6 MA's), (Start: 20 @11154 has 1 MA's), (Start: 25 @11175 has 23 MA's), (29, 11217), (31, 11223), (33, 11241), (59, 11397),

Gene: Conley_21 Start: 15506, Stop: 15808, Start Num: 16

Candidate Starts for Conley_21:

(1, 15383), (7, 15419), (9, 15455), (Start: 15 @15497 has 6 MA's), (Start: 16 @15506 has 123 MA's), (29, 15584), (34, 15614), (36, 15626), (38, 15632), (51, 15713), (54, 15731), (62, 15797),

Gene: Correa_14 Start: 10339, Stop: 10641, Start Num: 16

Candidate Starts for Correa_14:

(Start: 16 @10339 has 123 MA's), (31, 10423), (43, 10510),

Gene: Count_21 Start: 13666, Stop: 14001, Start Num: 13

Candidate Starts for Count_21:

(Start: 13 @13666 has 1 MA's), (17, 13696), (31, 13786), (44, 13876),

Gene: CricKo_13 Start: 9815, Stop: 10138, Start Num: 15

Candidate Starts for CricKo_13:

(Start: 15 @9815 has 6 MA's), (44, 10010), (46, 10016),

Gene: Crocheter_23 Start: 16871, Stop: 17143, Start Num: 22

Candidate Starts for Crocheter_23:

(Start: 16 @16841 has 123 MA's), (Start: 22 @16871 has 2 MA's), (23, 16874), (29, 16919), (31, 16925), (36, 16961), (38, 16967), (47, 17024), (51, 17048), (56, 17075), (62, 17132),

Gene: Daddyjeff_18 Start: 14937, Stop: 15242, Start Num: 16

Candidate Starts for Daddyjeff_18:

(Start: 16 @14937 has 123 MA's), (31, 15024), (36, 15060), (37, 15063), (44, 15114), (47, 15123), (55, 15168), (56, 15174),

Gene: Damascus_16 Start: 10466, Stop: 10771, Start Num: 16

Candidate Starts for Damascus_16:

(Start: 16 @10466 has 123 MA's), (31, 10553), (35, 10580), (45, 10646), (46, 10649), (61, 10739),

Gene: Darby_15 Start: 11511, Stop: 11810, Start Num: 16

Candidate Starts for Darby_15:

(10, 11463), (14, 11496), (Start: 15 @11502 has 6 MA's), (Start: 16 @11511 has 123 MA's), (Start: 27 @11553 has 2 MA's), (31, 11592), (39, 11655), (44, 11682), (61, 11778),

Gene: DevitoJr_15 Start: 11650, Stop: 11949, Start Num: 16

Candidate Starts for DevitoJr_15:

(10, 11602), (14, 11635), (Start: 15 @11641 has 6 MA's), (Start: 16 @11650 has 123 MA's), (Start: 27 @11692 has 2 MA's), (31, 11731), (39, 11794), (44, 11821), (61, 11917),

Gene: DizzyRudy_16 Start: 10464, Stop: 10769, Start Num: 16

Candidate Starts for DizzyRudy_16:

(Start: 16 @10464 has 123 MA's), (31, 10551), (45, 10644), (46, 10647), (61, 10737),

Gene: Djungelskog_15 Start: 10761, Stop: 11060, Start Num: 16

Candidate Starts for Djungelskog_15:

(Start: 16 @10761 has 123 MA's), (23, 10791), (31, 10842), (35, 10869), (43, 10929),

Gene: DoctorPepper_15 Start: 10761, Stop: 11060, Start Num: 16

Candidate Starts for DoctorPepper_15:

(Start: 16 @10761 has 123 MA's), (23, 10791), (31, 10842), (35, 10869), (43, 10929),

Gene: Doxi13_11 Start: 8104, Stop: 8406, Start Num: 16

Candidate Starts for Doxi13_11:

(Start: 16 @8104 has 123 MA's), (Start: 25 @8146 has 23 MA's), (29, 8182), (31, 8188), (33, 8206), (43, 8275), (44, 8278), (46, 8284), (56, 8338), (62, 8395),

Gene: DrGrey_16 Start: 11647, Stop: 11913, Start Num: 25

Candidate Starts for DrGrey_16:

(Start: 15 @11590 has 6 MA's), (Start: 25 @11647 has 23 MA's), (31, 11695), (56, 11845),

Gene: Duffington_24 Start: 18116, Stop: 18418, Start Num: 16

Candidate Starts for Duffington_24:

(Start: 16 @18116 has 123 MA's), (29, 18194), (31, 18200), (36, 18236), (38, 18242), (56, 18350), (62, 18407),

Gene: Dynamite_14 Start: 10339, Stop: 10641, Start Num: 16

Candidate Starts for Dynamite_14:

(Start: 16 @10339 has 123 MA's), (31, 10423), (43, 10510),

Gene: Eddiemania_25 Start: 18778, Stop: 19080, Start Num: 16

Candidate Starts for Eddiemania_25:

(Start: 16 @18778 has 123 MA's), (29, 18856), (31, 18862), (36, 18898), (38, 18904), (47, 18961), (51, 18985), (56, 19012), (62, 19069),

Gene: Eevee_20 Start: 16926, Stop: 17144, Start Num: 31

Candidate Starts for Eevee_20:

(Start: 16 @16839 has 123 MA's), (30, 16923), (31, 16926), (37, 16965), (40, 16995), (51, 17049),

Gene: Egad_15 Start: 10762, Stop: 11061, Start Num: 16

Candidate Starts for Egad_15:

(Start: 16 @10762 has 123 MA's), (23, 10792), (31, 10843), (35, 10870), (43, 10930),

Gene: ElephantMan_15 Start: 12215, Stop: 12514, Start Num: 16

Candidate Starts for ElephantMan_15:

(10, 12167), (Start: 15 @12206 has 6 MA's), (Start: 16 @12215 has 123 MA's), (Start: 27 @12257 has 2 MA's), (31, 12296), (39, 12359), (44, 12386), (61, 12482),

Gene: Elsa_14 Start: 10729, Stop: 11031, Start Num: 16

Candidate Starts for Elsa_14:

(Start: 16 @10729 has 123 MA's), (31, 10813), (43, 10900),

Gene: EndAve_24 Start: 18131, Stop: 18433, Start Num: 16

Candidate Starts for EndAve_24:

(Start: 16 @18131 has 123 MA's), (29, 18209), (31, 18215), (36, 18251), (38, 18257), (56, 18365), (62, 18422),

Gene: Esketit_16 Start: 11128, Stop: 11394, Start Num: 25

Candidate Starts for Esketit_16:

(Start: 15 @11071 has 6 MA's), (Start: 25 @11128 has 23 MA's), (31, 11176), (56, 11326),

Gene: Fazel_22 Start: 17164, Stop: 17466, Start Num: 16

Candidate Starts for Fazel_22:

(Start: 16 @17164 has 123 MA's), (Start: 28 @17218 has 1 MA's), (31, 17248), (36, 17284), (38, 17290), (54, 17389), (61, 17434), (62, 17455),

Gene: FidgetOrca_16 Start: 11134, Stop: 11400, Start Num: 25

Candidate Starts for FidgetOrca_16:

(Start: 15 @11077 has 6 MA's), (Start: 25 @11134 has 23 MA's), (31, 11182), (56, 11332),

Gene: Figliar_24 Start: 18141, Stop: 18443, Start Num: 16

Candidate Starts for Figliar_24:

(Start: 16 @18141 has 123 MA's), (29, 18219), (31, 18225), (36, 18261), (38, 18267), (56, 18375), (62, 18432),

Gene: FortCran_21 Start: 15482, Stop: 15784, Start Num: 16

Candidate Starts for FortCran_21:

(1, 15359), (7, 15395), (9, 15431), (Start: 15 @15473 has 6 MA's), (Start: 16 @15482 has 123 MA's), (29, 15560), (34, 15590), (36, 15602), (38, 15608), (51, 15689), (54, 15707), (56, 15716), (62, 15773),

Gene: FrodoSwaggins_16 Start: 11647, Stop: 11913, Start Num: 25

Candidate Starts for FrodoSwaggins_16:

(Start: 15 @11590 has 6 MA's), (Start: 25 @11647 has 23 MA's), (31, 11695), (56, 11845),

Gene: FromIndy_14 Start: 9800, Stop: 10123, Start Num: 15

Candidate Starts for FromIndy_14:

(Start: 15 @9800 has 6 MA's), (44, 9995), (46, 10001),

Gene: GantcherGoblin_14 Start: 10931, Stop: 11233, Start Num: 16

Candidate Starts for GantcherGoblin_14:

(Start: 16 @10931 has 123 MA's), (Start: 25 @10970 has 23 MA's), (31, 11015), (35, 11042), (41, 11087), (43, 11102), (44, 11105), (56, 11165),

Gene: Giantsbane_17 Start: 12880, Stop: 13176, Start Num: 16

Candidate Starts for Giantsbane_17:

(Start: 16 @12880 has 123 MA's), (Start: 27 @12919 has 2 MA's), (Start: 28 @12928 has 1 MA's), (31, 12958), (39, 13021), (44, 13048), (61, 13144),

Gene: Gill_21 Start: 15208, Stop: 15510, Start Num: 16

Candidate Starts for Gill_21:

(Start: 15 @15199 has 6 MA's), (Start: 16 @15208 has 123 MA's), (29, 15286), (34, 15316), (36, 15328), (38, 15334), (51, 15415), (53, 15427), (56, 15442), (62, 15499),

Gene: GirlPower_15 Start: 12613, Stop: 12879, Start Num: 25

Candidate Starts for GirlPower_15:

(Start: 15 @12556 has 6 MA's), (Start: 25 @12613 has 23 MA's), (31, 12661), (56, 12811),

Gene: GoCrazy_13 Start: 10339, Stop: 10641, Start Num: 16

Candidate Starts for GoCrazy_13:

(Start: 16 @10339 has 123 MA's), (31, 10423), (43, 10510), (53, 10558),

Gene: GoblinVoyage_11 Start: 8104, Stop: 8406, Start Num: 16

Candidate Starts for GoblinVoyage_11:

(Start: 16 @8104 has 123 MA's), (Start: 25 @8146 has 23 MA's), (29, 8182), (31, 8188), (33, 8206), (43, 8275), (44, 8278), (46, 8284), (56, 8338), (62, 8395),

Gene: Gordon_15 Start: 12774, Stop: 13073, Start Num: 16

Candidate Starts for Gordon_15:

(10, 12726), (14, 12759), (Start: 15 @12765 has 6 MA's), (Start: 16 @12774 has 123 MA's), (Start: 27 @12816 has 2 MA's), (31, 12855), (39, 12918), (44, 12945), (61, 13041),

Gene: Gravy_21 Start: 15208, Stop: 15510, Start Num: 16

Candidate Starts for Gravy_21:

(Start: 15 @15199 has 6 MA's), (Start: 16 @15208 has 123 MA's), (29, 15286), (34, 15316), (36, 15328), (38, 15334), (51, 15415), (53, 15427), (56, 15442), (62, 15499),

Gene: Gusicorn_26 Start: 17919, Stop: 18221, Start Num: 16

Candidate Starts for Gusicorn_26:

(Start: 16 @17919 has 123 MA's), (Start: 22 @17949 has 2 MA's), (23, 17952), (29, 17997), (31, 18003), (36, 18039), (38, 18045), (47, 18102), (56, 18153), (62, 18210),

Gene: Hankly_13 Start: 10363, Stop: 10665, Start Num: 16

Candidate Starts for Hankly_13:

(Start: 16 @10363 has 123 MA's), (31, 10447), (43, 10534), (53, 10582),

Gene: Heisenberger_14 Start: 10342, Stop: 10644, Start Num: 16

Candidate Starts for Heisenberger_14:

(Start: 16 @10342 has 123 MA's), (31, 10426), (43, 10513), (53, 10561),

Gene: Hortihabitatio_25 Start: 17664, Stop: 17846, Start Num: 36

Candidate Starts for Hortihabitatio_25:

(Start: 16 @17544 has 123 MA's), (31, 17628), (34, 17652), (36, 17664), (38, 17670), (56, 17778), (61, 17814), (62, 17835),

Gene: Hoshi_16 Start: 11128, Stop: 11394, Start Num: 25

Candidate Starts for Hoshi_16:

(Start: 15 @11071 has 6 MA's), (Start: 25 @11128 has 23 MA's), (31, 11176), (56, 11326),

Gene: HotFries_10 Start: 8103, Stop: 8405, Start Num: 16

Candidate Starts for HotFries_10:

(Start: 16 @8103 has 123 MA's), (24, 8139), (Start: 25 @8145 has 23 MA's), (29, 8181), (31, 8187), (33, 8205), (43, 8274), (44, 8277), (46, 8283), (56, 8337), (62, 8394),

Gene: Hydrus_25 Start: 18648, Stop: 18950, Start Num: 16

Candidate Starts for Hydrus_25:

(Start: 16 @18648 has 123 MA's), (Start: 22 @18678 has 2 MA's), (23, 18681), (29, 18726), (31, 18732), (36, 18768), (38, 18774), (47, 18831), (56, 18882), (62, 18939),

Gene: IceWarrior_16 Start: 11128, Stop: 11394, Start Num: 25

Candidate Starts for IceWarrior_16:

(Start: 15 @11071 has 6 MA's), (Start: 25 @11128 has 23 MA's), (31, 11176), (56, 11326),

Gene: Indigenous_16 Start: 11128, Stop: 11394, Start Num: 25

Candidate Starts for Indigenous_16:

(Start: 15 @11071 has 6 MA's), (Start: 25 @11128 has 23 MA's), (31, 11176), (56, 11326),

Gene: Ingrid_16 Start: 12505, Stop: 12804, Start Num: 16

Candidate Starts for Ingrid_16:

(10, 12457), (14, 12490), (Start: 15 @12496 has 6 MA's), (Start: 16 @12505 has 123 MA's), (Start: 27 @12547 has 2 MA's), (31, 12586), (44, 12676), (60, 12763),

Gene: Inked_17 Start: 12280, Stop: 12579, Start Num: 16

Candidate Starts for Inked_17:

(10, 12232), (14, 12265), (Start: 15 @12271 has 6 MA's), (Start: 16 @12280 has 123 MA's), (Start: 27 @12322 has 2 MA's), (31, 12361), (44, 12451), (52, 12493),

Gene: JEGGS_14 Start: 10341, Stop: 10643, Start Num: 16

Candidate Starts for JEGGS_14:

(Start: 16 @10341 has 123 MA's), (31, 10425), (43, 10512),

Gene: Jaylociraptor_16 Start: 11128, Stop: 11394, Start Num: 25

Candidate Starts for Jaylociraptor_16:

(Start: 15 @11071 has 6 MA's), (Start: 25 @11128 has 23 MA's), (31, 11176), (56, 11326),

Gene: Jazzy4900_14 Start: 10104, Stop: 10382, Start Num: 22

Candidate Starts for Jazzy4900_14:

(14, 10062), (Start: 15 @10068 has 6 MA's), (Start: 16 @10077 has 123 MA's), (18, 10089), (Start: 22 @10104 has 2 MA's), (31, 10164), (44, 10254),

Gene: Jodelie19_24 Start: 18135, Stop: 18437, Start Num: 16

Candidate Starts for Jodelie19_24:

(Start: 16 @18135 has 123 MA's), (29, 18213), (31, 18219), (36, 18255), (38, 18261), (56, 18369), (62, 18426),

Gene: JoyLin_20 Start: 16914, Stop: 17135, Start Num: 30

Candidate Starts for JoyLin_20:

(Start: 16 @16830 has 123 MA's), (30, 16914), (31, 16917), (37, 16956), (40, 16986),

Gene: JulesRay_23 Start: 15482, Stop: 15784, Start Num: 16

Candidate Starts for JulesRay_23:

(1, 15359), (7, 15395), (9, 15431), (Start: 15 @15473 has 6 MA's), (Start: 16 @15482 has 123 MA's), (29, 15560), (34, 15590), (36, 15602), (38, 15608), (51, 15689), (54, 15707), (56, 15716), (62, 15773),

Gene: Kardashian_14 Start: 10831, Stop: 11148, Start Num: 16

Candidate Starts for Kardashian_14:

(Start: 15 @10822 has 6 MA's), (Start: 16 @10831 has 123 MA's), (24, 10873), (26, 10882), (31, 10927), (44, 11017), (57, 11086),

Gene: Kardesai_13 Start: 10339, Stop: 10641, Start Num: 16

Candidate Starts for Kardesai_13:

(Start: 16 @10339 has 123 MA's), (31, 10423), (43, 10510),

Gene: KeaneyLin_13 Start: 10339, Stop: 10641, Start Num: 16

Candidate Starts for KeaneyLin_13:

(Start: 16 @10339 has 123 MA's), (31, 10423), (43, 10510), (53, 10558),

Gene: Kenosha_23 Start: 17252, Stop: 17554, Start Num: 16

Candidate Starts for Kenosha_23:

(Start: 16 @17252 has 123 MA's), (Start: 22 @17282 has 2 MA's), (23, 17285), (29, 17330), (31, 17336), (36, 17372), (38, 17378), (47, 17435), (51, 17459), (56, 17486), (62, 17543),

Gene: Kerry_21 Start: 15208, Stop: 15510, Start Num: 16

Candidate Starts for Kerry_21:

(Start: 15 @15199 has 6 MA's), (Start: 16 @15208 has 123 MA's), (29, 15286), (34, 15316), (36, 15328), (38, 15334), (51, 15415), (53, 15427), (56, 15442), (62, 15499),

Gene: Leathea_15 Start: 11101, Stop: 11406, Start Num: 16

Candidate Starts for Leathea_15:

(8, 11014), (12, 11080), (Start: 16 @11101 has 123 MA's), (31, 11188), (43, 11275), (44, 11278), (54, 11329),

Gene: Lewando_18 Start: 12883, Stop: 13188, Start Num: 16

Candidate Starts for Lewando_18:

(Start: 16 @12883 has 123 MA's), (26, 12925), (31, 12970), (36, 13006), (41, 13042), (43, 13057), (44, 13060), (54, 13111),

Gene: LibertyBell_14 Start: 9801, Stop: 10067, Start Num: 25

Candidate Starts for LibertyBell_14:

(Start: 15 @9753 has 6 MA's), (Start: 16 @9762 has 123 MA's), (Start: 25 @9801 has 23 MA's), (29, 9843), (31, 9849), (44, 9939), (56, 9999), (57, 10008),

Gene: LilHuddy_16 Start: 12342, Stop: 12638, Start Num: 16

Candidate Starts for LilHuddy_16:

(2, 12219), (3, 12222), (4, 12225), (5, 12231), (8, 12255), (10, 12294), (Start: 16 @12342 has 123 MA's), (Start: 28 @12390 has 1 MA's), (31, 12420), (43, 12507), (44, 12510), (61, 12606),

Gene: Linda_15 Start: 10761, Stop: 11060, Start Num: 16

Candidate Starts for Linda_15:

(Start: 16 @10761 has 123 MA's), (23, 10791), (31, 10842), (35, 10869), (43, 10929),

Gene: Loretta_16 Start: 12505, Stop: 12804, Start Num: 16

Candidate Starts for Loretta_16:

(10, 12457), (14, 12490), (Start: 15 @12496 has 6 MA's), (Start: 16 @12505 has 123 MA's), (Start: 27 @12547 has 2 MA's), (31, 12586), (44, 12676), (60, 12763),

Gene: Madamoto_16 Start: 11113, Stop: 11379, Start Num: 25

Candidate Starts for Madamoto_16:

(Start: 15 @11056 has 6 MA's), (Start: 25 @11113 has 23 MA's), (31, 11161), (56, 11311),

Gene: Madvan_24 Start: 17914, Stop: 18216, Start Num: 16

Candidate Starts for Madvan_24:

(Start: 16 @17914 has 123 MA's), (Start: 22 @17944 has 2 MA's), (23, 17947), (29, 17992), (31, 17998), (36, 18034), (38, 18040), (47, 18097), (56, 18148), (62, 18205),

Gene: Magel_21 Start: 15208, Stop: 15510, Start Num: 16

Candidate Starts for Magel_21:

(Start: 15 @15199 has 6 MA's), (Start: 16 @15208 has 123 MA's), (29, 15286), (34, 15316), (36, 15328), (38, 15334), (51, 15415), (53, 15427), (56, 15442), (62, 15499),

Gene: Makai_16 Start: 12188, Stop: 12484, Start Num: 16

Candidate Starts for Makai_16:

(Start: 16 @12188 has 123 MA's), (23, 12215), (24, 12218), (Start: 28 @12236 has 1 MA's), (31, 12266), (32, 12269), (43, 12353), (44, 12356), (60, 12443),

Gene: Maya_16 Start: 11142, Stop: 11408, Start Num: 25

Candidate Starts for Maya_16:

(Start: 15 @11085 has 6 MA's), (Start: 25 @11142 has 23 MA's), (31, 11190), (56, 11340),

Gene: MediumFry_15 Start: 11243, Stop: 11542, Start Num: 16

Candidate Starts for MediumFry_15:

(14, 11228), (Start: 16 @11243 has 123 MA's), (Start: 27 @11285 has 2 MA's), (31, 11324), (39, 11387), (44, 11414),

Gene: Meibysrarus_16 Start: 11128, Stop: 11394, Start Num: 25

Candidate Starts for Meibysrarus_16:

(Start: 15 @11071 has 6 MA's), (Start: 25 @11128 has 23 MA's), (31, 11176), (56, 11326),

Gene: Michelle_15 Start: 10761, Stop: 11060, Start Num: 16

Candidate Starts for Michelle_15:

(Start: 16 @10761 has 123 MA's), (23, 10791), (31, 10842), (35, 10869), (43, 10929),

Gene: Miek_13 Start: 9815, Stop: 10138, Start Num: 15

Candidate Starts for Miek_13:

(Start: 15 @9815 has 6 MA's), (44, 10010), (46, 10016),

Gene: MiniBagel_15 Start: 12732, Stop: 13028, Start Num: 16

Candidate Starts for MiniBagel_15:

(Start: 15 @12723 has 6 MA's), (Start: 16 @12732 has 123 MA's), (24, 12762), (Start: 27 @12771 has 2 MA's), (31, 12810), (39, 12873), (44, 12900), (61, 12996),

Gene: Mooshroom_14 Start: 10339, Stop: 10641, Start Num: 16

Candidate Starts for Mooshroom_14:

(Start: 16 @10339 has 123 MA's), (31, 10423), (43, 10510),

Gene: Moozy_11 Start: 8120, Stop: 8422, Start Num: 16

Candidate Starts for Moozy_11:

(Start: 16 @8120 has 123 MA's), (24, 8156), (Start: 25 @8162 has 23 MA's), (29, 8198), (31, 8204), (33, 8222), (43, 8291), (44, 8294), (46, 8300), (56, 8354), (62, 8411),

Gene: Mossy_25 Start: 19339, Stop: 19641, Start Num: 16

Candidate Starts for Mossy_25:

(Start: 16 @19339 has 123 MA's), (Start: 20 @19360 has 1 MA's), (31, 19423), (36, 19459), (38, 19465), (54, 19564), (61, 19609), (62, 19630),

Gene: MrAaronian_15 Start: 10761, Stop: 11060, Start Num: 16

Candidate Starts for MrAaronian_15:

(Start: 16 @10761 has 123 MA's), (23, 10791), (31, 10842), (35, 10869), (43, 10929),

Gene: Mudcat_14 Start: 10340, Stop: 10642, Start Num: 16

Candidate Starts for Mudcat_14:

(Start: 16 @10340 has 123 MA's), (31, 10424), (43, 10511),

Gene: Mysticmoon_24 Start: 17938, Stop: 18240, Start Num: 16

Candidate Starts for Mysticmoon_24:

(Start: 16 @17938 has 123 MA's), (31, 18022), (34, 18046), (36, 18058), (38, 18064), (46, 18118), (51, 18145), (54, 18163), (56, 18172), (61, 18208), (62, 18229),

Gene: Nadmeg_24 Start: 17915, Stop: 18217, Start Num: 16

Candidate Starts for Nadmeg_24:

(Start: 16 @17915 has 123 MA's), (29, 17993), (31, 17999), (36, 18035), (38, 18041), (47, 18098), (51, 18122), (56, 18149), (62, 18206),

Gene: Namo_16 Start: 11134, Stop: 11400, Start Num: 25

Candidate Starts for Namo_16:

(Start: 15 @11077 has 6 MA's), (Start: 25 @11134 has 23 MA's), (31, 11182), (56, 11332),

Gene: NapoleonB_14 Start: 10339, Stop: 10641, Start Num: 16

Candidate Starts for NapoleonB_14:

(Start: 16 @10339 has 123 MA's), (31, 10423), (43, 10510),

Gene: Nason_14 Start: 10729, Stop: 11031, Start Num: 16

Candidate Starts for Nason_14:

(Start: 16 @10729 has 123 MA's), (31, 10813), (43, 10900),

Gene: Nightmare_16 Start: 12048, Stop: 12347, Start Num: 16

Candidate Starts for Nightmare_16:

(10, 12000), (14, 12033), (Start: 15 @12039 has 6 MA's), (Start: 16 @12048 has 123 MA's), (Start: 27 @12090 has 2 MA's), (31, 12129), (39, 12192), (44, 12219), (61, 12315),

Gene: Niktson_15 Start: 12215, Stop: 12514, Start Num: 16

Candidate Starts for Niktson_15:

(10, 12167), (Start: 15 @12206 has 6 MA's), (Start: 16 @12215 has 123 MA's), (Start: 27 @12257 has 2 MA's), (31, 12296), (39, 12359), (44, 12386), (61, 12482),

Gene: Nithya_24 Start: 18128, Stop: 18430, Start Num: 16

Candidate Starts for Nithya_24:

(Start: 16 @18128 has 123 MA's), (29, 18206), (31, 18212), (36, 18248), (38, 18254), (56, 18362), (62, 18419),

Gene: Nivinsha_15 Start: 11529, Stop: 11828, Start Num: 16

Candidate Starts for Nivinsha_15:

(10, 11481), (14, 11514), (Start: 15 @11520 has 6 MA's), (Start: 16 @11529 has 123 MA's), (Start: 27 @11571 has 2 MA's), (31, 11610), (39, 11673), (44, 11700), (61, 11796),

Gene: NoPickles_21 Start: 15208, Stop: 15510, Start Num: 16

Candidate Starts for NoPickles_21:

(Start: 15 @15199 has 6 MA's), (Start: 16 @15208 has 123 MA's), (29, 15286), (34, 15316), (36, 15328), (38, 15334), (51, 15415), (54, 15433), (56, 15442), (62, 15499),

Gene: Odesza_21 Start: 15208, Stop: 15510, Start Num: 16

Candidate Starts for Odesza_21:

(Start: 15 @15199 has 6 MA's), (Start: 16 @15208 has 123 MA's), (29, 15286), (34, 15316), (36, 15328), (38, 15334), (51, 15415), (53, 15427), (56, 15442), (62, 15499),

Gene: OhMyWard_24 Start: 18679, Stop: 18981, Start Num: 16

Candidate Starts for OhMyWard_24:

(Start: 16 @18679 has 123 MA's), (Start: 20 @18700 has 1 MA's), (31, 18763), (36, 18799), (38, 18805), (54, 18904), (61, 18949), (62, 18970),

Gene: OlgasClover_24 Start: 18864, Stop: 19166, Start Num: 16

Candidate Starts for OlgasClover_24:

(Start: 16 @18864 has 123 MA's), (29, 18942), (31, 18948), (36, 18984), (38, 18990), (47, 19047), (56, 19098), (62, 19155),

Gene: OlympicHelado_16 Start: 11134, Stop: 11400, Start Num: 25

Candidate Starts for OlympicHelado_16:

(Start: 15 @11077 has 6 MA's), (Start: 25 @11134 has 23 MA's), (31, 11182), (56, 11332),

Gene: Paella_30 Start: 21139, Stop: 21396, Start Num: 27

Candidate Starts for Paella_30:

(14, 21076), (Start: 15 @21082 has 6 MA's), (Start: 16 @21091 has 123 MA's), (19, 21106), (Start: 27 @21139 has 2 MA's), (31, 21178), (33, 21196), (42, 21253), (44, 21268), (47, 21277),

Gene: Pepy6_027 Start: 24605, Stop: 24907, Start Num: 16

Candidate Starts for Pepy6_027:

(Start: 16 @24605 has 123 MA's), (18, 24620), (31, 24689), (56, 24839), (61, 24875), (62, 24896),

Gene: Perkunas_23 Start: 16004, Stop: 16306, Start Num: 16

Candidate Starts for Perkunas_23:

(1, 15881), (3, 15887), (7, 15917), (Start: 15 @15995 has 6 MA's), (Start: 16 @16004 has 123 MA's), (29, 16082), (34, 16112), (36, 16124), (38, 16130), (51, 16211), (54, 16229), (56, 16238), (62, 16295),

Gene: Petito_22 Start: 15699, Stop: 16001, Start Num: 16

Candidate Starts for Petito_22:

(Start: 15 @15690 has 6 MA's), (Start: 16 @15699 has 123 MA's), (29, 15777), (34, 15807), (36, 15819), (38, 15825), (51, 15906), (54, 15924), (56, 15933), (62, 15990),

Gene: Phaby_16 Start: 12334, Stop: 12630, Start Num: 16

Candidate Starts for Phaby_16:

(3, 12214), (4, 12217), (5, 12223), (8, 12247), (10, 12286), (Start: 16 @12334 has 123 MA's), (Start: 28 @12382 has 1 MA's), (31, 12412), (43, 12499), (44, 12502), (61, 12598),

Gene: Phaila_14 Start: 10741, Stop: 10959, Start Num: 31

Candidate Starts for Phaila_14:

(Start: 16 @10657 has 123 MA's), (Start: 25 @10696 has 23 MA's), (31, 10741), (35, 10768), (41, 10813), (43, 10828), (44, 10831), (56, 10891),

Gene: Phepper_24 Start: 17913, Stop: 18215, Start Num: 16

Candidate Starts for Phepper_24:

(Start: 16 @17913 has 123 MA's), (29, 17991), (31, 17997), (36, 18033), (38, 18039), (47, 18096), (51, 18120), (56, 18147), (62, 18204),

Gene: Pherobrine_23 Start: 17936, Stop: 18238, Start Num: 16

Candidate Starts for Pherobrine_23:

(Start: 16 @17936 has 123 MA's), (31, 18020), (34, 18044), (36, 18056), (38, 18062), (46, 18116), (51, 18143), (54, 18161), (56, 18170), (61, 18206), (62, 18227),

Gene: PherryCruz_10 Start: 8103, Stop: 8405, Start Num: 16

Candidate Starts for PherryCruz_10:

(Start: 16 @8103 has 123 MA's), (Start: 25 @8145 has 23 MA's), (29, 8181), (31, 8187), (33, 8205), (43, 8274), (44, 8277), (46, 8283), (56, 8337), (62, 8394),

Gene: Pippin15_19 Start: 14498, Stop: 14803, Start Num: 16

Candidate Starts for Pippin15_19:

(Start: 16 @14498 has 123 MA's), (30, 14582), (31, 14585), (38, 14627),

Gene: Poco6_028 Start: 26618, Stop: 26920, Start Num: 16

Candidate Starts for Poco6_028:

(1, 26492), (3, 26498), (7, 26528), (9, 26564), (10, 26570), (Start: 16 @26618 has 123 MA's), (29, 26696), (31, 26702), (56, 26852), (61, 26888), (62, 26909),

Gene: Popy_16 Start: 11647, Stop: 11913, Start Num: 25

Candidate Starts for Popy_16:

(Start: 15 @11590 has 6 MA's), (Start: 25 @11647 has 23 MA's), (31, 11695), (56, 11845),

Gene: ProfFrink_15 Start: 10761, Stop: 11060, Start Num: 16

Candidate Starts for ProfFrink_15:

(Start: 16 @10761 has 123 MA's), (23, 10791), (31, 10842), (35, 10869), (43, 10929),

Gene: Qui_30 Start: 21139, Stop: 21396, Start Num: 27

Candidate Starts for Qui_30:

(14, 21076), (Start: 15 @21082 has 6 MA's), (Start: 16 @21091 has 123 MA's), (19, 21106), (Start: 27 @21139 has 2 MA's), (31, 21178), (33, 21196), (42, 21253), (44, 21268), (47, 21277),

Gene: Rainydai_13 Start: 9815, Stop: 10138, Start Num: 15

Candidate Starts for Rainydai_13:

(Start: 15 @9815 has 6 MA's), (44, 10010), (46, 10016),

Gene: Raunak_15 Start: 10761, Stop: 11060, Start Num: 16

Candidate Starts for Raunak_15:

(Start: 16 @10761 has 123 MA's), (23, 10791), (31, 10842), (35, 10869), (43, 10929),

Gene: RavenPuff_10 Start: 8103, Stop: 8405, Start Num: 16

Candidate Starts for RavenPuff_10:

(Start: 16 @8103 has 123 MA's), (Start: 25 @8145 has 23 MA's), (29, 8181), (31, 8187), (33, 8205), (43, 8274), (44, 8277), (46, 8283), (56, 8337), (62, 8394),

Gene: Regigigas_14 Start: 9815, Stop: 10138, Start Num: 15

Candidate Starts for Regigigas_14:

(Start: 15 @9815 has 6 MA's), (44, 10010), (46, 10016),

Gene: Renaldo_20 Start: 12908, Stop: 13189, Start Num: 21

Candidate Starts for Renaldo_20:

(Start: 16 @12884 has 123 MA's), (21, 12908), (26, 12926), (31, 12971), (36, 13007), (41, 13043), (43, 13058), (44, 13061), (54, 13112),

Gene: Rickmore_22 Start: 16159, Stop: 16461, Start Num: 16

Candidate Starts for Rickmore_22:

(Start: 16 @16159 has 123 MA's), (26, 16204), (29, 16237), (31, 16243), (36, 16279), (38, 16285), (53, 16378), (54, 16384), (56, 16393), (62, 16450),

Gene: Rima_16 Start: 11134, Stop: 11400, Start Num: 25

Candidate Starts for Rima_16:

(Start: 15 @11077 has 6 MA's), (Start: 25 @11134 has 23 MA's), (31, 11182), (56, 11332),

Gene: Roney_21 Start: 15208, Stop: 15510, Start Num: 16

Candidate Starts for Roney_21:

(Start: 15 @15199 has 6 MA's), (Start: 16 @15208 has 123 MA's), (29, 15286), (34, 15316), (36, 15328), (38, 15334), (51, 15415), (53, 15427), (56, 15442), (62, 15499),

Gene: RosaAsantewaa_11 Start: 8049, Stop: 8354, Start Num: 16

Candidate Starts for RosaAsantewaa_11:

(Start: 15 @8040 has 6 MA's), (Start: 16 @8049 has 123 MA's), (37, 8175), (44, 8226), (57, 8295), (58, 8304),

Gene: Runhaar_24 Start: 17915, Stop: 18217, Start Num: 16

Candidate Starts for Runhaar_24:

(Start: 16 @17915 has 123 MA's), (29, 17993), (31, 17999), (36, 18035), (38, 18041), (47, 18098), (51, 18122), (56, 18149), (62, 18206),

Gene: Salk_15 Start: 10761, Stop: 11060, Start Num: 16

Candidate Starts for Salk_15:

(Start: 16 @10761 has 123 MA's), (23, 10791), (31, 10842), (35, 10869), (43, 10929),

Gene: Scap1_11 Start: 8150, Stop: 8416, Start Num: 25

Candidate Starts for Scap1_11:

(Start: 15 @8102 has 6 MA's), (Start: 25 @8150 has 23 MA's), (29, 8192), (31, 8198), (43, 8285), (46, 8294), (55, 8342), (62, 8405),

Gene: Schwartz33_25 Start: 18248, Stop: 18550, Start Num: 16

Candidate Starts for Schwartz33_25:

(Start: 16 @18248 has 123 MA's), (Start: 28 @18302 has 1 MA's), (29, 18326), (31, 18332), (36, 18368), (38, 18374), (49, 18452), (54, 18473), (56, 18482), (61, 18518), (62, 18539),

Gene: ScienceWizSam_16 Start: 11484, Stop: 11783, Start Num: 16

Candidate Starts for ScienceWizSam_16:

(10, 11436), (14, 11469), (Start: 15 @11475 has 6 MA's), (Start: 16 @11484 has 123 MA's), (Start: 27 @11526 has 2 MA's), (31, 11565), (39, 11628), (44, 11655), (61, 11751),

Gene: Secretariat_22 Start: 16968, Stop: 17270, Start Num: 16

Candidate Starts for Secretariat_22:

(Start: 16 @16968 has 123 MA's), (29, 17046), (31, 17052), (36, 17088), (38, 17094), (53, 17187), (54, 17193), (61, 17238), (62, 17259),

Gene: SendItCS_12 Start: 9815, Stop: 10138, Start Num: 15

Candidate Starts for SendItCS_12:

(Start: 15 @9815 has 6 MA's), (44, 10010), (46, 10016),

Gene: Serenabean_18 Start: 14966, Stop: 15271, Start Num: 16

Candidate Starts for Serenabean_18:

(Start: 16 @14966 has 123 MA's), (31, 15053), (36, 15089), (37, 15092), (44, 15143), (47, 15152), (55, 15197), (56, 15203),

Gene: ShaggyRogers_27 Start: 18002, Stop: 18220, Start Num: 31

Candidate Starts for ShaggyRogers_27:

(Start: 16 @17918 has 123 MA's), (Start: 22 @17948 has 2 MA's), (23, 17951), (29, 17996), (31, 18002), (36, 18038), (38, 18044), (47, 18101), (56, 18152), (62, 18209),

Gene: SheRa_11 Start: 8103, Stop: 8405, Start Num: 16

Candidate Starts for SheRa_11:

(Start: 16 @8103 has 123 MA's), (24, 8139), (Start: 25 @8145 has 23 MA's), (29, 8181), (31, 8187), (33, 8205), (43, 8274), (44, 8277), (46, 8283), (56, 8337), (62, 8394),

Gene: Shepard_16 Start: 12339, Stop: 12635, Start Num: 16

Candidate Starts for Shepard_16:

(3, 12219), (4, 12222), (5, 12228), (8, 12252), (10, 12291), (Start: 16 @12339 has 123 MA's), (Start: 28 @12387 has 1 MA's), (31, 12417), (43, 12504), (44, 12507), (61, 12603),

Gene: Shiba_15 Start: 10761, Stop: 11060, Start Num: 16

Candidate Starts for Shiba_15:

(Start: 16 @10761 has 123 MA's), (23, 10791), (31, 10842), (35, 10869), (43, 10929),

Gene: Sloopyjoe_15 Start: 10762, Stop: 11061, Start Num: 16

Candidate Starts for Sloopyjoe_15:

(Start: 16 @10762 has 123 MA's), (23, 10792), (31, 10843), (35, 10870), (43, 10930),

Gene: Soshi_16 Start: 11656, Stop: 11922, Start Num: 25

Candidate Starts for Soshi_16:

(Start: 15 @11599 has 6 MA's), (Start: 25 @11656 has 23 MA's), (31, 11704), (56, 11854),

Gene: Spectropatronm_16 Start: 11128, Stop: 11394, Start Num: 25

Candidate Starts for Spectropatronm_16:

(Start: 15 @11071 has 6 MA's), (Start: 25 @11128 has 23 MA's), (31, 11176), (56, 11326),

Gene: Sporto_16 Start: 11962, Stop: 12267, Start Num: 16

Candidate Starts for Sporto_16:

(Start: 16 @11962 has 123 MA's), (31, 12049), (43, 12136), (55, 12193),

Gene: StarLord_15 Start: 10762, Stop: 11061, Start Num: 16

Candidate Starts for StarLord_15:

(Start: 16 @10762 has 123 MA's), (23, 10792), (31, 10843), (35, 10870), (43, 10930),

Gene: Stayer_15 Start: 10761, Stop: 11060, Start Num: 16

Candidate Starts for Stayer_15:

(Start: 16 @10761 has 123 MA's), (23, 10791), (31, 10842), (35, 10869), (43, 10929),

Gene: Sunny4976_13 Start: 10077, Stop: 10382, Start Num: 16

Candidate Starts for Sunny4976_13:

(14, 10062), (Start: 15 @10068 has 6 MA's), (Start: 16 @10077 has 123 MA's), (18, 10089), (Start: 22 @10104 has 2 MA's), (31, 10164), (44, 10254),

Gene: Synopsis_14 Start: 11649, Stop: 11948, Start Num: 16

Candidate Starts for Synopsis_14:

(10, 11601), (14, 11634), (Start: 15 @11640 has 6 MA's), (Start: 16 @11649 has 123 MA's), (Start: 27 @11691 has 2 MA's), (31, 11730), (39, 11793), (44, 11820), (61, 11916),

Gene: TaidaOne_16 Start: 11776, Stop: 12042, Start Num: 25

Candidate Starts for TaidaOne_16:

(Start: 15 @11719 has 6 MA's), (Start: 25 @11776 has 23 MA's), (31, 11824), (56, 11974),

Gene: Tanis_21 Start: 15058, Stop: 15360, Start Num: 16

Candidate Starts for Tanis_21:

(Start: 15 @15049 has 6 MA's), (Start: 16 @15058 has 123 MA's), (29, 15136), (34, 15166), (36, 15178), (38, 15184), (51, 15265), (53, 15277), (56, 15292), (62, 15349),

Gene: Tatanka_14 Start: 11586, Stop: 11885, Start Num: 16

Candidate Starts for Tatanka_14:

(10, 11538), (14, 11571), (Start: 15 @11577 has 6 MA's), (Start: 16 @11586 has 123 MA's), (Start: 27 @11628 has 2 MA's), (31, 11667), (39, 11730), (44, 11757), (61, 11853),

Gene: Teacup_15 Start: 11490, Stop: 11789, Start Num: 16

Candidate Starts for Teacup_15:

(10, 11442), (14, 11475), (Start: 15 @11481 has 6 MA's), (Start: 16 @11490 has 123 MA's), (Start: 27 @11532 has 2 MA's), (31, 11571), (39, 11634), (44, 11661), (61, 11757),

Gene: TenaciousP_24 Start: 18135, Stop: 18437, Start Num: 16

Candidate Starts for TenaciousP_24:

(Start: 16 @18135 has 123 MA's), (29, 18213), (31, 18219), (36, 18255), (38, 18261), (56, 18369), (62, 18426),

Gene: Tenno_16 Start: 12741, Stop: 13037, Start Num: 16

Candidate Starts for Tenno_16:

(Start: 15 @12732 has 6 MA's), (Start: 16 @12741 has 123 MA's), (24, 12771), (Start: 27 @12780 has 2 MA's), (31, 12819), (39, 12882), (44, 12909), (61, 13005),

Gene: Thiqqums_13 Start: 9815, Stop: 10138, Start Num: 15

Candidate Starts for Thiqqums_13:

(Start: 15 @9815 has 6 MA's), (44, 10010), (46, 10016),

Gene: TieDye_15 Start: 10838, Stop: 11104, Start Num: 25

Candidate Starts for TieDye_15:

(Start: 15 @10781 has 6 MA's), (Start: 25 @10838 has 23 MA's), (31, 10886), (56, 11036),

Gene: Tokki_16 Start: 12384, Stop: 12680, Start Num: 16

Candidate Starts for Tokki_16:

(2, 12261), (3, 12264), (4, 12267), (5, 12273), (8, 12297), (10, 12336), (Start: 16 @12384 has 123 MA's), (Start: 28 @12432 has 1 MA's), (31, 12462), (43, 12549), (44, 12552), (61, 12648),

Gene: TonyStarch_16 Start: 11077, Stop: 11400, Start Num: 15

Candidate Starts for TonyStarch_16:

(Start: 15 @11077 has 6 MA's), (Start: 25 @11134 has 23 MA's), (31, 11182), (56, 11332),

Gene: Tribby_14 Start: 10339, Stop: 10641, Start Num: 16

Candidate Starts for Tribby_14:

(Start: 16 @10339 has 123 MA's), (31, 10423), (43, 10510),

Gene: TrixiePhattel_15 Start: 11261, Stop: 11479, Start Num: 31

Candidate Starts for TrixiePhattel_15:

(11, 11129), (12, 11153), (14, 11159), (Start: 16 @11174 has 123 MA's), (31, 11261), (41, 11333), (43, 11348), (44, 11351), (54, 11402),

Gene: Truckee_15 Start: 11593, Stop: 11889, Start Num: 16

Candidate Starts for Truckee_15:

(Start: 16 @11593 has 123 MA's), (23, 11620), (24, 11623), (Start: 28 @11641 has 1 MA's), (31, 11671), (32, 11674), (43, 11758), (44, 11761), (60, 11848),

Gene: Trustiboi_16 Start: 12213, Stop: 12512, Start Num: 16

Candidate Starts for Trustiboi_16:

(10, 12165), (14, 12198), (Start: 15 @12204 has 6 MA's), (Start: 16 @12213 has 123 MA's), (Start: 27 @12255 has 2 MA's), (31, 12294), (39, 12357), (44, 12384), (61, 12480),

Gene: Untouchable_23 Start: 16870, Stop: 17142, Start Num: 22

Candidate Starts for Untouchable_23:

(Start: 16 @16840 has 123 MA's), (Start: 22 @16870 has 2 MA's), (23, 16873), (29, 16918), (31, 16924), (36, 16960), (38, 16966), (47, 17023), (51, 17047), (56, 17074), (62, 17131),

Gene: Uzumaki_15 Start: 11214, Stop: 11516, Start Num: 16

Candidate Starts for Uzumaki_15:

(Start: 16 @11214 has 123 MA's), (23, 11244), (Start: 25 @11253 has 23 MA's), (31, 11298), (35, 11325), (41, 11370), (43, 11385), (44, 11388), (56, 11448),

Gene: Vardy_24 Start: 17880, Stop: 18182, Start Num: 16

Candidate Starts for Vardy_24:

(Start: 16 @17880 has 123 MA's), (29, 17958), (31, 17964), (36, 18000), (38, 18006), (47, 18063), (51, 18087), (56, 18114), (62, 18171),

Gene: Xenomorph_13 Start: 10339, Stop: 10641, Start Num: 16

Candidate Starts for Xenomorph_13:

(Start: 16 @10339 has 123 MA's), (31, 10423), (43, 10510),

Gene: Yotsuba_20 Start: 16926, Stop: 17144, Start Num: 31

Candidate Starts for Yotsuba_20:

(Start: 16 @16839 has 123 MA's), (30, 16923), (31, 16926), (37, 16965), (40, 16995), (51, 17049),

Gene: Zeina_15 Start: 11224, Stop: 11526, Start Num: 16

Candidate Starts for Zeina_15:

(Start: 16 @11224 has 123 MA's), (Start: 25 @11263 has 23 MA's), (31, 11308), (35, 11335), (41, 11380), (43, 11395), (44, 11398), (56, 11458),

Gene: Zeph_25 Start: 18630, Stop: 18932, Start Num: 16

Candidate Starts for Zeph_25:

(Start: 16 @18630 has 123 MA's), (Start: 22 @18660 has 2 MA's), (23, 18663), (29, 18708), (31, 18714), (36, 18750), (38, 18756), (47, 18813), (56, 18864), (62, 18921),