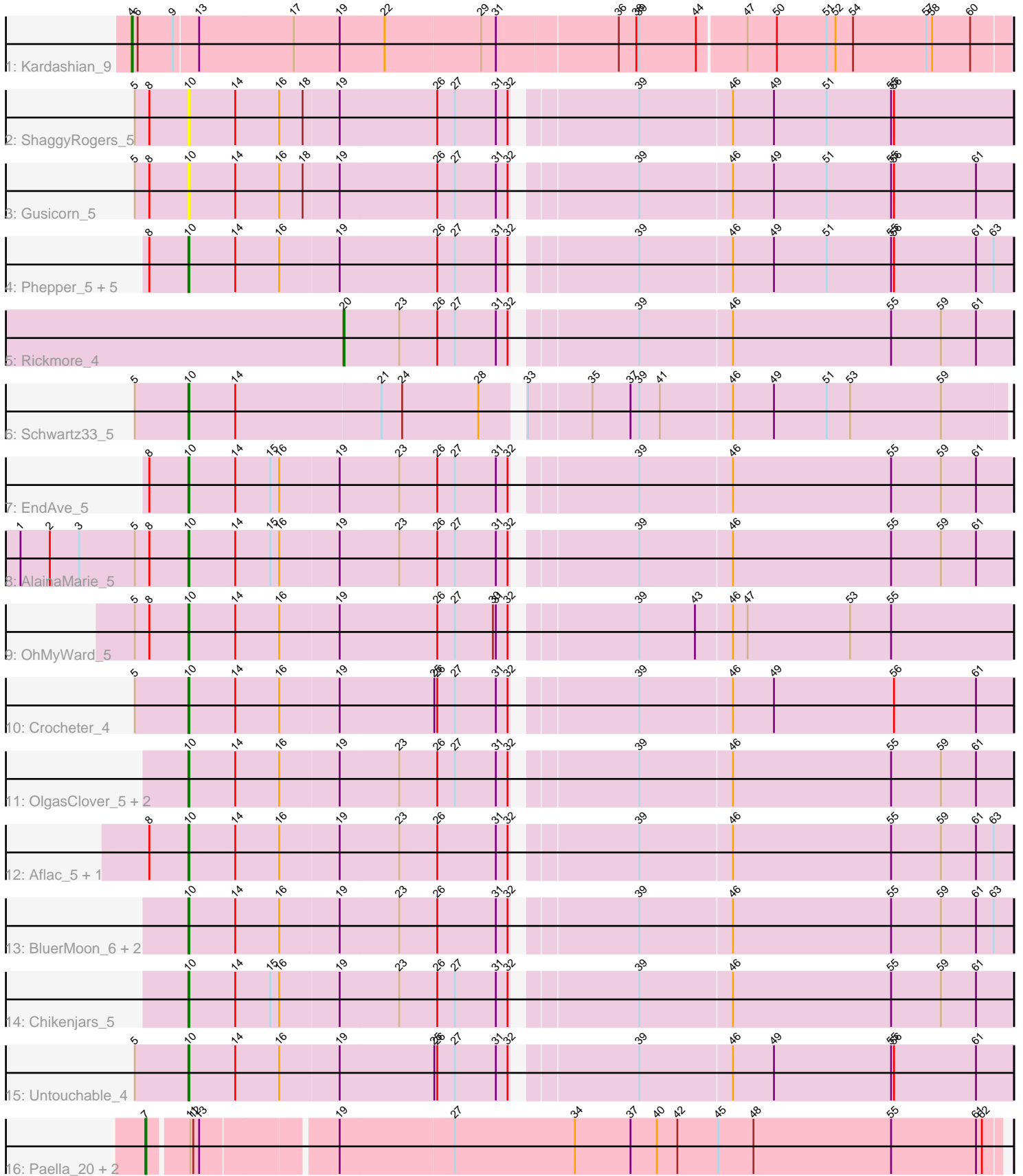


Pham 173118



Note: Tracks are now grouped by subcluster and scaled. Switching in subcluster is indicated by changes in track color. Track scale is now set by default to display the region 30 bp upstream of start 1 to 30 bp downstream of the last possible start. If this default region is judged to be packed too tightly with annotated starts, the track will be further scaled to only show that region of the ORF with annotated starts. This action will be indicated by adding "Zoomed" to the title. For starts, yellow indicates the location of called starts comprised solely of Glimmer/GeneMark auto-annotations, green indicates the location of called starts with at least 1 manual gene annotation.

Pham 173118 Report

This analysis was run 11/02/24 on database version 579.

Pham number 173118 has 28 members, 4 are drafts.

Phages represented in each track:

- Track 1 : Kardashian_9
- Track 2 : ShaggyRogers_5
- Track 3 : Gusicorn_5
- Track 4 : Phepper_5, Burley_5, Madvan_5, Vardy_5, Nadmeg_5, Runhaar_5
- Track 5 : Rickmore_4
- Track 6 : Schwartz33_5
- Track 7 : EndAve_5
- Track 8 : AlainaMarie_5
- Track 9 : OhMyWard_5
- Track 10 : Crocheter_4
- Track 11 : OlgasClover_5, Duffington_5, Nithya_5
- Track 12 : Aflac_5, Figliar_5
- Track 13 : BluerMoon_6, TenaciousP_5, Jodelie19_5
- Track 14 : Chikenjars_5
- Track 15 : Untouchable_4
- Track 16 : Paella_20, Elver_19, Qui_20

Summary of Final Annotations (See graph section above for start numbers):

The start number called the most often in the published annotations is 10, it was called in 20 of the 24 non-draft genes in the pham.

Genes that call this "Most Annotated" start:

- Aflac_5, AlainaMarie_5, BluerMoon_6, Burley_5, Chikenjars_5, Crocheter_4, Duffington_5, EndAve_5, Figliar_5, Gusicorn_5, Jodelie19_5, Madvan_5, Nadmeg_5, Nithya_5, OhMyWard_5, OlgasClover_5, Phepper_5, Runhaar_5, Schwartz33_5, ShaggyRogers_5, TenaciousP_5, Untouchable_4, Vardy_5,

Genes that have the "Most Annotated" start but do not call it:

-

Genes that do not have the "Most Annotated" start:

- Elver_19, Kardashian_9, Paella_20, Qui_20, Rickmore_4,

Summary by start number:

Start 4:

- Found in 1 of 28 (3.6%) of genes in pham
- Manual Annotations of this start: 1 of 24
- Called 100.0% of time when present
- Phage (with cluster) where this start called: Kardashian_9 (BI6),

Start 7:

- Found in 3 of 28 (10.7%) of genes in pham
- Manual Annotations of this start: 2 of 24
- Called 100.0% of time when present
- Phage (with cluster) where this start called: Elver_19 (FK), Paella_20 (FK), Qui_20 (FK),

Start 10:

- Found in 23 of 28 (82.1%) of genes in pham
- Manual Annotations of this start: 20 of 24
- Called 100.0% of time when present
- Phage (with cluster) where this start called: Aflac_5 (DJ), AlainaMarie_5 (DJ), BluerMoon_6 (DJ), Burley_5 (DJ), Chikenjars_5 (DJ), Crocheter_4 (DJ), Duffington_5 (DJ), EndAve_5 (DJ), Figliar_5 (DJ), Gusicorn_5 (DJ), Jodelie19_5 (DJ), Madvan_5 (DJ), Nadmeg_5 (DJ), Nithya_5 (DJ), OhMyWard_5 (DJ), OlgasClover_5 (DJ), Phepper_5 (DJ), Runhaar_5 (DJ), Schwartz33_5 (DJ), ShaggyRogers_5 (DJ), TenaciousP_5 (DJ), Untouchable_4 (DJ), Vardy_5 (DJ),

Start 20:

- Found in 1 of 28 (3.6%) of genes in pham
- Manual Annotations of this start: 1 of 24
- Called 100.0% of time when present
- Phage (with cluster) where this start called: Rickmore_4 (DJ),

Summary by clusters:

There are 3 clusters represented in this pham: BI6, FK, DJ,

Info for manual annotations of cluster BI6:

- Start number 4 was manually annotated 1 time for cluster BI6.

Info for manual annotations of cluster DJ:

- Start number 10 was manually annotated 20 times for cluster DJ.
- Start number 20 was manually annotated 1 time for cluster DJ.

Info for manual annotations of cluster FK:

- Start number 7 was manually annotated 2 times for cluster FK.

Gene Information:

Gene: Aflac_5 Start: 2074, Stop: 2889, Start Num: 10

Candidate Starts for Aflac_5:

(8, 2035), (Start: 10 @2074 has 20 MA's), (14, 2122), (16, 2167), (19, 2227), (23, 2287), (26, 2326), (31, 2386), (32, 2398), (39, 2509), (46, 2602), (55, 2764), (59, 2815), (61, 2851), (63, 2869),

Gene: AlainaMarie_5 Start: 2068, Stop: 2880, Start Num: 10

Candidate Starts for AlainaMarie_5:

(1, 1897), (2, 1927), (3, 1957), (5, 2014), (8, 2029), (Start: 10 @2068 has 20 MA's), (14, 2116), (15, 2152), (16, 2161), (19, 2221), (23, 2281), (26, 2320), (27, 2338), (31, 2380), (32, 2392), (39, 2503), (46, 2596), (55, 2758), (59, 2809), (61, 2845),

Gene: BluerMoon_6 Start: 2068, Stop: 2883, Start Num: 10

Candidate Starts for BluerMoon_6:

(Start: 10 @2068 has 20 MA's), (14, 2116), (16, 2161), (19, 2221), (23, 2281), (26, 2320), (31, 2380), (32, 2392), (39, 2503), (46, 2596), (55, 2758), (59, 2809), (61, 2845), (63, 2863),

Gene: Burley_5 Start: 2068, Stop: 2883, Start Num: 10

Candidate Starts for Burley_5:

(8, 2029), (Start: 10 @2068 has 20 MA's), (14, 2116), (16, 2161), (19, 2221), (26, 2320), (27, 2338), (31, 2380), (32, 2392), (39, 2503), (46, 2596), (49, 2638), (51, 2692), (55, 2758), (56, 2761), (61, 2845), (63, 2863),

Gene: Chikenjars_5 Start: 2068, Stop: 2880, Start Num: 10

Candidate Starts for Chikenjars_5:

(Start: 10 @2068 has 20 MA's), (14, 2116), (15, 2152), (16, 2161), (19, 2221), (23, 2281), (26, 2320), (27, 2338), (31, 2380), (32, 2392), (39, 2503), (46, 2596), (55, 2758), (59, 2809), (61, 2845),

Gene: Crocheter_4 Start: 995, Stop: 1810, Start Num: 10

Candidate Starts for Crocheter_4:

(5, 941), (Start: 10 @995 has 20 MA's), (14, 1043), (16, 1088), (19, 1148), (25, 1244), (26, 1247), (27, 1265), (31, 1307), (32, 1319), (39, 1430), (46, 1523), (49, 1565), (56, 1688), (61, 1772),

Gene: Duffington_5 Start: 2068, Stop: 2880, Start Num: 10

Candidate Starts for Duffington_5:

(Start: 10 @2068 has 20 MA's), (14, 2116), (16, 2161), (19, 2221), (23, 2281), (26, 2320), (27, 2338), (31, 2380), (32, 2392), (39, 2503), (46, 2596), (55, 2758), (59, 2809), (61, 2845),

Gene: Elver_19 Start: 11351, Stop: 12199, Start Num: 7

Candidate Starts for Elver_19:

(Start: 7 @11351 has 2 MA's), (11, 11390), (12, 11393), (13, 11399), (19, 11528), (27, 11642), (34, 11765), (37, 11822), (40, 11849), (42, 11870), (45, 11912), (48, 11948), (55, 12089), (61, 12176), (62, 12182),

Gene: EndAve_5 Start: 2068, Stop: 2880, Start Num: 10

Candidate Starts for EndAve_5:

(8, 2029), (Start: 10 @2068 has 20 MA's), (14, 2116), (15, 2152), (16, 2161), (19, 2221), (23, 2281), (26, 2320), (27, 2338), (31, 2380), (32, 2392), (39, 2503), (46, 2596), (55, 2758), (59, 2809), (61, 2845),

Gene: Figliar_5 Start: 2074, Stop: 2889, Start Num: 10

Candidate Starts for Figliar_5:

(8, 2035), (Start: 10 @2074 has 20 MA's), (14, 2122), (16, 2167), (19, 2227), (23, 2287), (26, 2326), (31, 2386), (32, 2398), (39, 2509), (46, 2602), (55, 2764), (59, 2815), (61, 2851), (63, 2869),

Gene: Gusicorn_5 Start: 2068, Stop: 2883, Start Num: 10

Candidate Starts for Gusicorn_5:

(5, 2014), (8, 2029), (Start: 10 @2068 has 20 MA's), (14, 2116), (16, 2161), (18, 2185), (19, 2221), (26, 2320), (27, 2338), (31, 2380), (32, 2392), (39, 2503), (46, 2596), (49, 2638), (51, 2692), (55, 2758), (56, 2761), (61, 2845),

Gene: Jodelie19_5 Start: 2068, Stop: 2883, Start Num: 10

Candidate Starts for Jodelie19_5:

(Start: 10 @2068 has 20 MA's), (14, 2116), (16, 2161), (19, 2221), (23, 2281), (26, 2320), (31, 2380), (32, 2392), (39, 2503), (46, 2596), (55, 2758), (59, 2809), (61, 2845), (63, 2863),

Gene: Kardashian_9 Start: 5672, Stop: 6547, Start Num: 4

Candidate Starts for Kardashian_9:

(Start: 4 @5672 has 1 MA's), (6, 5678), (9, 5714), (13, 5738), (17, 5834), (19, 5879), (22, 5924), (29, 6020), (31, 6035), (36, 6155), (38, 6173), (39, 6176), (44, 6233), (47, 6281), (50, 6311), (51, 6362), (52, 6371), (54, 6389), (57, 6464), (58, 6470), (60, 6509),

Gene: Madvan_5 Start: 2068, Stop: 2883, Start Num: 10

Candidate Starts for Madvan_5:

(8, 2029), (Start: 10 @2068 has 20 MA's), (14, 2116), (16, 2161), (19, 2221), (26, 2320), (27, 2338), (31, 2380), (32, 2392), (39, 2503), (46, 2596), (49, 2638), (51, 2692), (55, 2758), (56, 2761), (61, 2845), (63, 2863),

Gene: Nadmeg_5 Start: 2069, Stop: 2884, Start Num: 10

Candidate Starts for Nadmeg_5:

(8, 2030), (Start: 10 @2069 has 20 MA's), (14, 2117), (16, 2162), (19, 2222), (26, 2321), (27, 2339), (31, 2381), (32, 2393), (39, 2504), (46, 2597), (49, 2639), (51, 2693), (55, 2759), (56, 2762), (61, 2846), (63, 2864),

Gene: Nithya_5 Start: 2068, Stop: 2880, Start Num: 10

Candidate Starts for Nithya_5:

(Start: 10 @2068 has 20 MA's), (14, 2116), (16, 2161), (19, 2221), (23, 2281), (26, 2320), (27, 2338), (31, 2380), (32, 2392), (39, 2503), (46, 2596), (55, 2758), (59, 2809), (61, 2845),

Gene: OhMyWard_5 Start: 2067, Stop: 2879, Start Num: 10

Candidate Starts for OhMyWard_5:

(5, 2013), (8, 2028), (Start: 10 @2067 has 20 MA's), (14, 2115), (16, 2160), (19, 2220), (26, 2319), (27, 2337), (30, 2376), (31, 2379), (32, 2391), (39, 2502), (43, 2559), (46, 2595), (47, 2610), (53, 2715), (55, 2757),

Gene: OlgasClover_5 Start: 2068, Stop: 2880, Start Num: 10

Candidate Starts for OlgasClover_5:

(Start: 10 @2068 has 20 MA's), (14, 2116), (16, 2161), (19, 2221), (23, 2281), (26, 2320), (27, 2338), (31, 2380), (32, 2392), (39, 2503), (46, 2596), (55, 2758), (59, 2809), (61, 2845),

Gene: Paella_20 Start: 11353, Stop: 12201, Start Num: 7

Candidate Starts for Paella_20:

(Start: 7 @11353 has 2 MA's), (11, 11392), (12, 11395), (13, 11401), (19, 11530), (27, 11644), (34, 11767), (37, 11824), (40, 11851), (42, 11872), (45, 11914), (48, 11950), (55, 12091), (61, 12178), (62, 12184),

Gene: Phepper_5 Start: 2068, Stop: 2883, Start Num: 10

Candidate Starts for Phepper_5:

(8, 2029), (Start: 10 @2068 has 20 MA's), (14, 2116), (16, 2161), (19, 2221), (26, 2320), (27, 2338), (31, 2380), (32, 2392), (39, 2503), (46, 2596), (49, 2638), (51, 2692), (55, 2758), (56, 2761), (61, 2845), (63, 2863),

Gene: Qui_20 Start: 11353, Stop: 12201, Start Num: 7

Candidate Starts for Qui_20:

(Start: 7 @11353 has 2 MA's), (11, 11392), (12, 11395), (13, 11401), (19, 11530), (27, 11644), (34, 11767), (37, 11824), (40, 11851), (42, 11872), (45, 11914), (48, 11950), (55, 12091), (61, 12178), (62, 12184),

Gene: Rickmore_4 Start: 792, Stop: 1448, Start Num: 20

Candidate Starts for Rickmore_4:

(Start: 20 @792 has 1 MA's), (23, 849), (26, 888), (27, 906), (31, 948), (32, 960), (39, 1071), (46, 1164), (55, 1326), (59, 1377), (61, 1413),

Gene: Runhaar_5 Start: 2068, Stop: 2883, Start Num: 10

Candidate Starts for Runhaar_5:

(8, 2029), (Start: 10 @2068 has 20 MA's), (14, 2116), (16, 2161), (19, 2221), (26, 2320), (27, 2338), (31, 2380), (32, 2392), (39, 2503), (46, 2596), (49, 2638), (51, 2692), (55, 2758), (56, 2761), (61, 2845), (63, 2863),

Gene: Schwartz33_5 Start: 2080, Stop: 2886, Start Num: 10

Candidate Starts for Schwartz33_5:

(5, 2026), (Start: 10 @2080 has 20 MA's), (14, 2128), (21, 2275), (24, 2296), (28, 2374), (33, 2407), (35, 2467), (37, 2506), (39, 2515), (41, 2536), (46, 2608), (49, 2650), (51, 2704), (53, 2728), (59, 2821),

Gene: ShaggyRogers_5 Start: 2068, Stop: 2883, Start Num: 10

Candidate Starts for ShaggyRogers_5:

(5, 2014), (8, 2029), (Start: 10 @2068 has 20 MA's), (14, 2116), (16, 2161), (18, 2185), (19, 2221), (26, 2320), (27, 2338), (31, 2380), (32, 2392), (39, 2503), (46, 2596), (49, 2638), (51, 2692), (55, 2758), (56, 2761),

Gene: TenaciousP_5 Start: 2068, Stop: 2883, Start Num: 10

Candidate Starts for TenaciousP_5:

(Start: 10 @2068 has 20 MA's), (14, 2116), (16, 2161), (19, 2221), (23, 2281), (26, 2320), (31, 2380), (32, 2392), (39, 2503), (46, 2596), (55, 2758), (59, 2809), (61, 2845), (63, 2863),

Gene: Untouchable_4 Start: 995, Stop: 1810, Start Num: 10

Candidate Starts for Untouchable_4:

(5, 941), (Start: 10 @995 has 20 MA's), (14, 1043), (16, 1088), (19, 1148), (25, 1244), (26, 1247), (27, 1265), (31, 1307), (32, 1319), (39, 1430), (46, 1523), (49, 1565), (55, 1685), (56, 1688), (61, 1772),

Gene: Vardy_5 Start: 2067, Stop: 2882, Start Num: 10

Candidate Starts for Vardy_5:

(8, 2028), (Start: 10 @2067 has 20 MA's), (14, 2115), (16, 2160), (19, 2220), (26, 2319), (27, 2337), (31, 2379), (32, 2391), (39, 2502), (46, 2595), (49, 2637), (51, 2691), (55, 2757), (56, 2760), (61, 2844), (63, 2862),