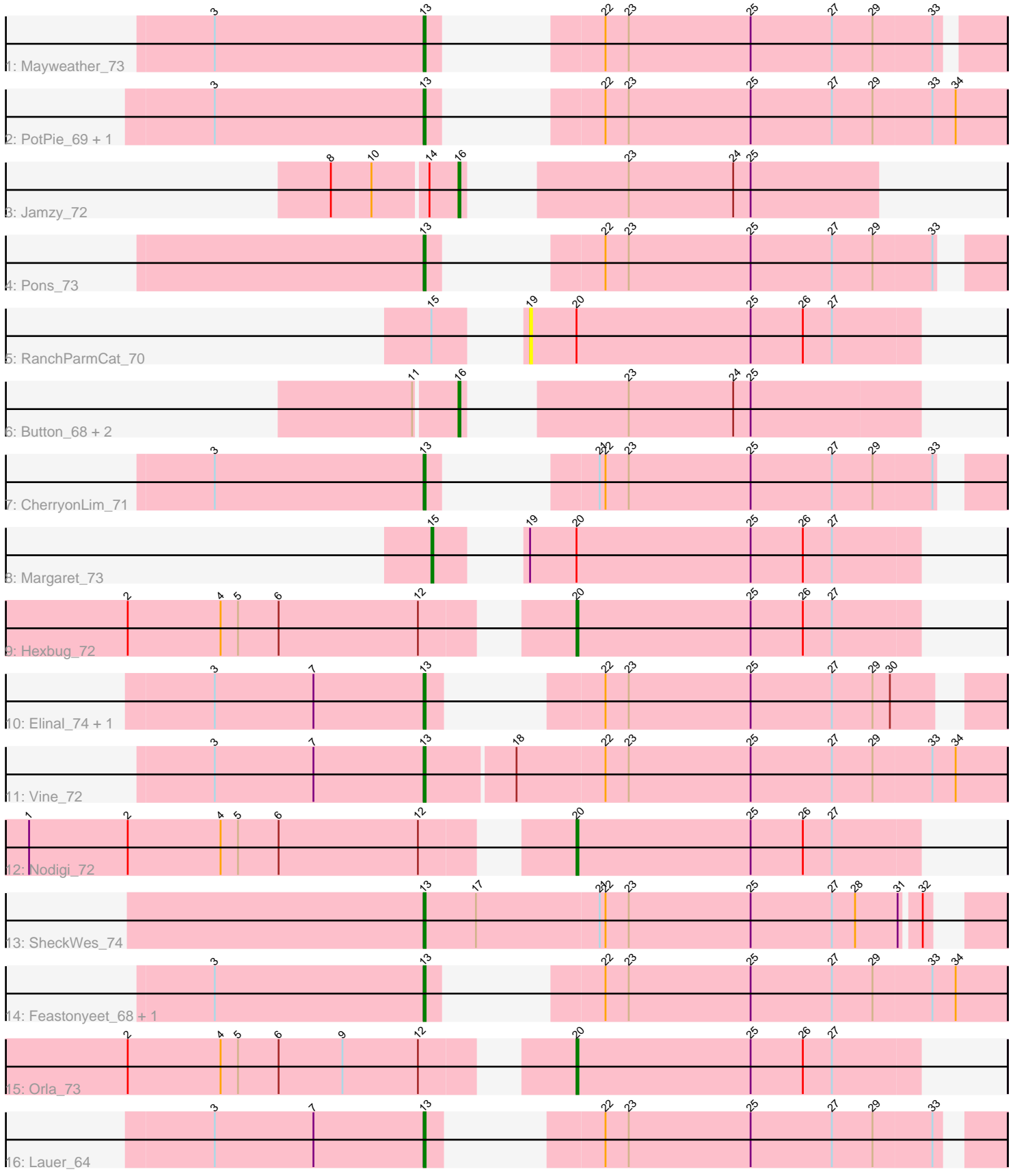


Pham 173213



Note: Tracks are now grouped by subcluster and scaled. Switching in subcluster is indicated by changes in track color. Track scale is now set by default to display the region 30 bp upstream of start 1 to 30 bp downstream of the last possible start. If this default region is judged to be packed too tightly with annotated starts, the track will be further scaled to only show that region of the ORF with annotated starts. This action will be indicated by adding "Zoomed" to the title. For starts, yellow indicates the location of called starts comprised solely of Glimmer/GeneMark auto-annotations, green indicates the location of called starts with at least 1 manual gene annotation.

## Pham 173213 Report

This analysis was run 11/02/24 on database version 579.

Pham number 173213 has 21 members, 1 are drafts.

Phages represented in each track:

- Track 1 : Mayweather\_73
- Track 2 : PotPie\_69, SummitAcademy\_69
- Track 3 : Jamzy\_72
- Track 4 : Pons\_73
- Track 5 : RanchParmCat\_70
- Track 6 : Button\_68, Yakult\_71, GiKK\_72
- Track 7 : CherryonLim\_71
- Track 8 : Margaret\_73
- Track 9 : Hexbug\_72
- Track 10 : Elinal\_74, KayGee\_72
- Track 11 : Vine\_72
- Track 12 : Nodigi\_72
- Track 13 : SheckWes\_74
- Track 14 : Feastonyeet\_68, BigChungus\_68
- Track 15 : Orla\_73
- Track 16 : Lauer\_64

### ***Summary of Final Annotations (See graph section above for start numbers):***

The start number called the most often in the published annotations is 13, it was called in 12 of the 20 non-draft genes in the pham.

Genes that call this "Most Annotated" start:

- BigChungus\_68, CherryonLim\_71, Elinal\_74, Feastonyeet\_68, KayGee\_72, Lauer\_64, Mayweather\_73, Pons\_73, PotPie\_69, SheckWes\_74, SummitAcademy\_69, Vine\_72,

Genes that have the "Most Annotated" start but do not call it:

- 

Genes that do not have the "Most Annotated" start:

- Button\_68, GiKK\_72, Hexbug\_72, Jamzy\_72, Margaret\_73, Nodigi\_72, Orla\_73, RanchParmCat\_70, Yakult\_71,

## Summary by start number:

### Start 13:

- Found in 12 of 21 ( 57.1% ) of genes in pham
- Manual Annotations of this start: 12 of 20
- Called 100.0% of time when present
- Phage (with cluster) where this start called: BigChungus\_68 (CT), CherryonLim\_71 (CT), Elinal\_74 (CT), Feastonyeet\_68 (CT), KayGee\_72 (CT), Lauer\_64 (CT), Mayweather\_73 (CT), Pons\_73 (CT), PotPie\_69 (CT), SheckWes\_74 (CT), SummitAcademy\_69 (CT), Vine\_72 (CT),

### Start 15:

- Found in 2 of 21 ( 9.5% ) of genes in pham
- Manual Annotations of this start: 1 of 20
- Called 50.0% of time when present
- Phage (with cluster) where this start called: Margaret\_73 (CT),

### Start 16:

- Found in 4 of 21 ( 19.0% ) of genes in pham
- Manual Annotations of this start: 4 of 20
- Called 100.0% of time when present
- Phage (with cluster) where this start called: Button\_68 (CT), GiKK\_72 (CT), Jamzy\_72 (CT), Yakult\_71 (CT),

### Start 19:

- Found in 2 of 21 ( 9.5% ) of genes in pham
- No Manual Annotations of this start.
- Called 50.0% of time when present
- Phage (with cluster) where this start called: RanchParmCat\_70 (CT),

### Start 20:

- Found in 5 of 21 ( 23.8% ) of genes in pham
- Manual Annotations of this start: 3 of 20
- Called 60.0% of time when present
- Phage (with cluster) where this start called: Hexbug\_72 (CT), Nodigi\_72 (CT), Orla\_73 (CT),

## Summary by clusters:

There is one cluster represented in this pham: CT

### Info for manual annotations of cluster CT:

- Start number 13 was manually annotated 12 times for cluster CT.
- Start number 15 was manually annotated 1 time for cluster CT.
- Start number 16 was manually annotated 4 times for cluster CT.
- Start number 20 was manually annotated 3 times for cluster CT.

## Gene Information:

Gene: BigChungus\_68 Start: 46032, Stop: 46274, Start Num: 13

Candidate Starts for BigChungus\_68:

(3, 45924), (Start: 13 @46032 has 12 MA's), (22, 46068), (23, 46080), (25, 46143), (27, 46185), (29, 46206), (33, 46236), (34, 46248),

Gene: Button\_68 Start: 45066, Stop: 45266, Start Num: 16

Candidate Starts for Button\_68:

(11, 45045), (Start: 16 @45066 has 4 MA's), (23, 45117), (24, 45171), (25, 45180),

Gene: CherryonLim\_71 Start: 47828, Stop: 48055, Start Num: 13

Candidate Starts for CherryonLim\_71:

(3, 47720), (Start: 13 @47828 has 12 MA's), (21, 47861), (22, 47864), (23, 47876), (25, 47939), (27, 47981), (29, 48002), (33, 48032),

Gene: Elinal\_74 Start: 47155, Stop: 47385, Start Num: 13

Candidate Starts for Elinal\_74:

(3, 47047), (7, 47098), (Start: 13 @47155 has 12 MA's), (22, 47194), (23, 47206), (25, 47269), (27, 47311), (29, 47332), (30, 47341),

Gene: Feastonyeet\_68 Start: 46032, Stop: 46274, Start Num: 13

Candidate Starts for Feastonyeet\_68:

(3, 45924), (Start: 13 @46032 has 12 MA's), (22, 46068), (23, 46080), (25, 46143), (27, 46185), (29, 46206), (33, 46236), (34, 46248),

Gene: GiKK\_72 Start: 46277, Stop: 46456, Start Num: 16

Candidate Starts for GiKK\_72:

(11, 46256), (Start: 16 @46277 has 4 MA's), (23, 46328), (24, 46382), (25, 46391),

Gene: Hexbug\_72 Start: 46284, Stop: 46460, Start Num: 20

Candidate Starts for Hexbug\_72:

(2, 46077), (4, 46125), (5, 46134), (6, 46155), (12, 46227), (Start: 20 @46284 has 3 MA's), (25, 46374), (26, 46401), (27, 46416),

Gene: Jamzy\_72 Start: 46007, Stop: 46186, Start Num: 16

Candidate Starts for Jamzy\_72:

(8, 45944), (10, 45965), (14, 45992), (Start: 16 @46007 has 4 MA's), (23, 46058), (24, 46112), (25, 46121),

Gene: KayGee\_72 Start: 47142, Stop: 47372, Start Num: 13

Candidate Starts for KayGee\_72:

(3, 47034), (7, 47085), (Start: 13 @47142 has 12 MA's), (22, 47181), (23, 47193), (25, 47256), (27, 47298), (29, 47319), (30, 47328),

Gene: Lauer\_64 Start: 46986, Stop: 47219, Start Num: 13

Candidate Starts for Lauer\_64:

(3, 46878), (7, 46929), (Start: 13 @46986 has 12 MA's), (22, 47025), (23, 47037), (25, 47100), (27, 47142), (29, 47163), (33, 47193),

Gene: Margaret\_73 Start: 45790, Stop: 46011, Start Num: 15

Candidate Starts for Margaret\_73:

(Start: 15 @45790 has 1 MA's), (19, 45811), (Start: 20 @45835 has 3 MA's), (25, 45925), (26, 45952), (27, 45967),

Gene: Mayweather\_73 Start: 47208, Stop: 47441, Start Num: 13

Candidate Starts for Mayweather\_73:

(3, 47100), (Start: 13 @47208 has 12 MA's), (22, 47244), (23, 47256), (25, 47319), (27, 47361), (29, 47382), (33, 47412),

Gene: Nodigi\_72 Start: 46305, Stop: 46481, Start Num: 20

Candidate Starts for Nodigi\_72:

(1, 46047), (2, 46098), (4, 46146), (5, 46155), (6, 46176), (12, 46248), (Start: 20 @46305 has 3 MA's), (25, 46395), (26, 46422), (27, 46437),

Gene: Orla\_73 Start: 46436, Stop: 46612, Start Num: 20

Candidate Starts for Orla\_73:

(2, 46229), (4, 46277), (5, 46286), (6, 46307), (9, 46340), (12, 46379), (Start: 20 @46436 has 3 MA's), (25, 46526), (26, 46553), (27, 46568),

Gene: Pons\_73 Start: 46862, Stop: 47089, Start Num: 13

Candidate Starts for Pons\_73:

(Start: 13 @46862 has 12 MA's), (22, 46898), (23, 46910), (25, 46973), (27, 47015), (29, 47036), (33, 47066),

Gene: PotPie\_69 Start: 47046, Stop: 47288, Start Num: 13

Candidate Starts for PotPie\_69:

(3, 46938), (Start: 13 @47046 has 12 MA's), (22, 47082), (23, 47094), (25, 47157), (27, 47199), (29, 47220), (33, 47250), (34, 47262),

Gene: RanchParmCat\_70 Start: 46103, Stop: 46303, Start Num: 19

Candidate Starts for RanchParmCat\_70:

(Start: 15 @46082 has 1 MA's), (19, 46103), (Start: 20 @46127 has 3 MA's), (25, 46217), (26, 46244), (27, 46259),

Gene: SheckWes\_74 Start: 46431, Stop: 46709, Start Num: 13

Candidate Starts for SheckWes\_74:

(Start: 13 @46431 has 12 MA's), (17, 46458), (21, 46521), (22, 46524), (23, 46536), (25, 46599), (27, 46641), (28, 46653), (31, 46674), (32, 46683),

Gene: SummitAcademy\_69 Start: 46189, Stop: 46431, Start Num: 13

Candidate Starts for SummitAcademy\_69:

(3, 46081), (Start: 13 @46189 has 12 MA's), (22, 46225), (23, 46237), (25, 46300), (27, 46342), (29, 46363), (33, 46393), (34, 46405),

Gene: Vine\_72 Start: 46824, Stop: 47120, Start Num: 13

Candidate Starts for Vine\_72:

(3, 46716), (7, 46767), (Start: 13 @46824 has 12 MA's), (18, 46869), (22, 46914), (23, 46926), (25, 46989), (27, 47031), (29, 47052), (33, 47082), (34, 47094),

Gene: Yakult\_71 Start: 46173, Stop: 46373, Start Num: 16

Candidate Starts for Yakult\_71:

(11, 46152), (Start: 16 @46173 has 4 MA's), (23, 46224), (24, 46278), (25, 46287),