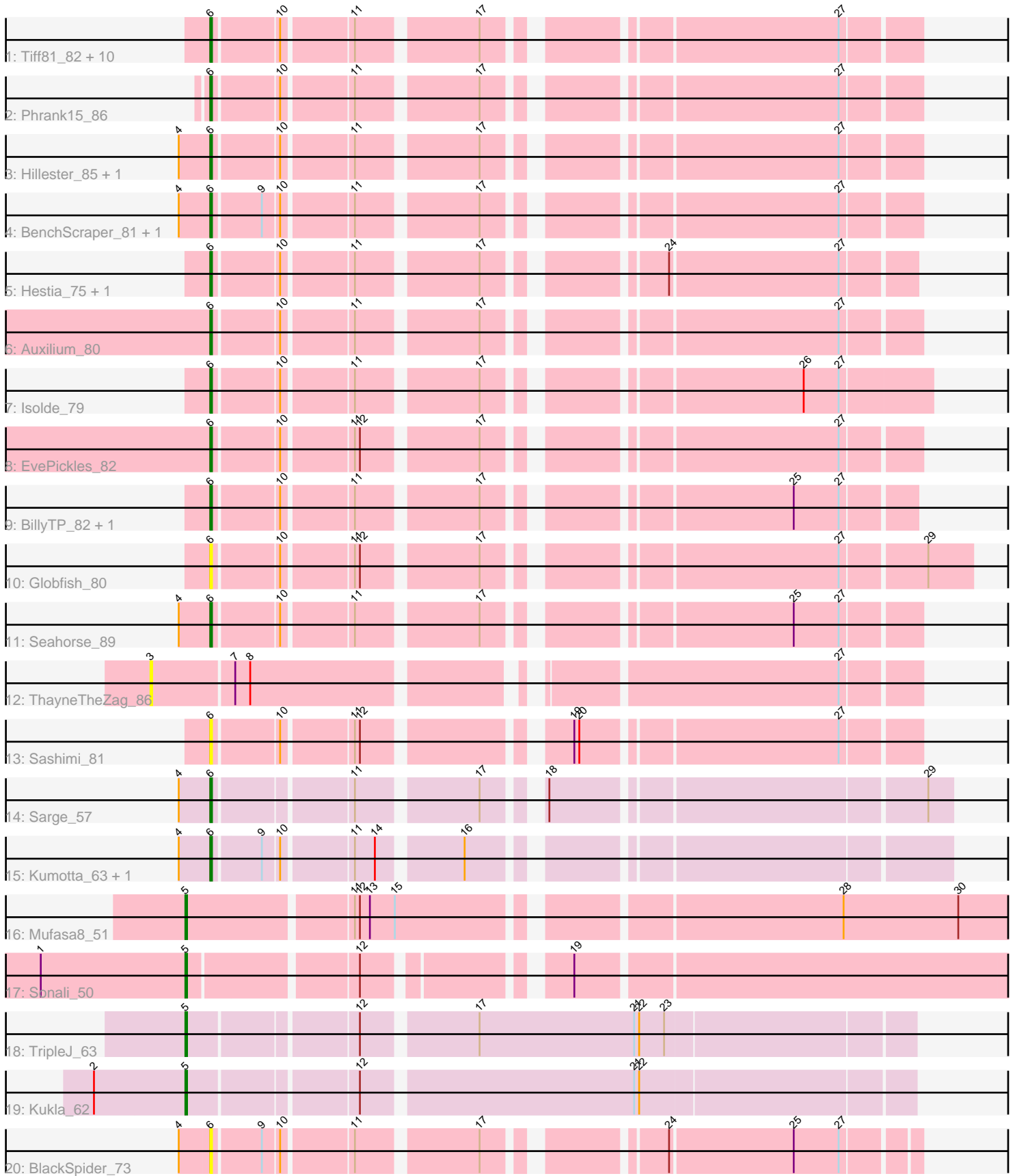


Pham 174966



Note: Tracks are now grouped by subcluster and scaled. Switching in subcluster is indicated by changes in track color. Track scale is now set by default to display the region 30 bp upstream of start 1 to 30 bp downstream of the last possible start. If this default region is judged to be packed too tightly with annotated starts, the track will be further scaled to only show that region of the ORF with annotated starts. This action will be indicated by adding "Zoomed" to the title. For starts, yellow indicates the location of called starts comprised solely of Glimmer/GeneMark auto-annotations, green indicates the location of called starts with at least 1 manual gene annotation.

## Pham 174966 Report

This analysis was run 11/02/24 on database version 579.

Pham number 174966 has 35 members, 12 are drafts.

Phages represented in each track:

- Track 1 : Tiff81\_82, Aikyam\_80, Raqqa\_80, MidnightRain\_87, Raphaella\_82, Sakai\_78, YoungHarleezy\_79, Lawnathon\_81, Faja\_84, Richie\_84, Gorpy\_79
- Track 2 : Phrank15\_86
- Track 3 : Hillester\_85, RadFad\_86
- Track 4 : BenchScraper\_81, SpicyFrank\_83
- Track 5 : Hestia\_75, Anekin\_83
- Track 6 : Auxilium\_80
- Track 7 : Isolde\_79
- Track 8 : EvePickles\_82
- Track 9 : BillyTP\_82, CookieBear\_78
- Track 10 : Globfish\_80
- Track 11 : Seahorse\_89
- Track 12 : ThayneTheZag\_86
- Track 13 : Sashimi\_81
- Track 14 : Sarge\_57
- Track 15 : Kumotta\_63, MargaretKali\_59
- Track 16 : Mufasa8\_51
- Track 17 : Sonali\_50
- Track 18 : TripleJ\_63
- Track 19 : Kukla\_62
- Track 20 : BlackSpider\_73

### ***Summary of Final Annotations (See graph section above for start numbers):***

The start number called the most often in the published annotations is 6, it was called in 19 of the 23 non-draft genes in the pham.

Genes that call this "Most Annotated" start:

- Aikyam\_80, Anekin\_83, Auxilium\_80, BenchScraper\_81, BillyTP\_82, BlackSpider\_73, CookieBear\_78, EvePickles\_82, Faja\_84, Globfish\_80, Gorpy\_79, Hestia\_75, Hillester\_85, Isolde\_79, Kumotta\_63, Lawnathon\_81, MargaretKali\_59, MidnightRain\_87, Phrank15\_86, RadFad\_86, Raphaella\_82, Raqqa\_80, Richie\_84, Sakai\_78, Sarge\_57, Sashimi\_81, Seahorse\_89, SpicyFrank\_83, Tiff81\_82, YoungHarleezy\_79,

Genes that have the "Most Annotated" start but do not call it:

- 

Genes that do not have the "Most Annotated" start:

- Kukla\_62, Mufasa8\_51, Sonali\_50, ThayneTheZag\_86, TripleJ\_63,

### Summary by start number:

Start 3:

- Found in 1 of 35 ( 2.9% ) of genes in pham
- No Manual Annotations of this start.
- Called 100.0% of time when present
- Phage (with cluster) where this start called: ThayneTheZag\_86 (AY),

Start 5:

- Found in 4 of 35 ( 11.4% ) of genes in pham
- Manual Annotations of this start: 4 of 23
- Called 100.0% of time when present
- Phage (with cluster) where this start called: Kukla\_62 (FJ), Mufasa8\_51 (FG), Sonali\_50 (FG), TripleJ\_63 (FJ),

Start 6:

- Found in 30 of 35 ( 85.7% ) of genes in pham
- Manual Annotations of this start: 19 of 23
- Called 100.0% of time when present
- Phage (with cluster) where this start called: Aikyam\_80 (AY), Anekin\_83 (AY), Auxilium\_80 (AY), BenchScraper\_81 (AY), BillyTP\_82 (AY), BlackSpider\_73 (FN), CookieBear\_78 (AY), EvePickles\_82 (AY), Faja\_84 (AY), Globfish\_80 (AY), Gorpy\_79 (AY), Hestia\_75 (AY), Hillester\_85 (AY), Isolde\_79 (AY), Kumotta\_63 (FB), Lawnathon\_81 (AY), MargaretKali\_59 (FB), MidnightRain\_87 (AY), Phrank15\_86 (AY), RadFad\_86 (AY), Raphaella\_82 (AY), Raqqa\_80 (AY), Richie\_84 (AY), Sakai\_78 (AY), Sarge\_57 (FB), Sashimi\_81 (AY), Seahorse\_89 (AY), SpicyFrank\_83 (AY), Tiff81\_82 (AY), YoungHarleezy\_79 (AY),

### Summary by clusters:

There are 5 clusters represented in this pham: AY, FB, FJ, FN, FG,

Info for manual annotations of cluster AY:

- Start number 6 was manually annotated 16 times for cluster AY.

Info for manual annotations of cluster FB:

- Start number 6 was manually annotated 3 times for cluster FB.

Info for manual annotations of cluster FG:

- Start number 5 was manually annotated 2 times for cluster FG.

Info for manual annotations of cluster FJ:

- Start number 5 was manually annotated 2 times for cluster FJ.

### **Gene Information:**

Gene: Aikyam\_80 Start: 44522, Stop: 44890, Start Num: 6

Candidate Starts for Aikyam\_80:

(Start: 6 @44522 has 19 MA's), (10, 44558), (11, 44597), (17, 44663), (27, 44849),

Gene: Anekin\_83 Start: 47266, Stop: 47637, Start Num: 6

Candidate Starts for Anekin\_83:

(Start: 6 @47266 has 19 MA's), (10, 47302), (11, 47341), (17, 47407), (24, 47494), (27, 47593),

Gene: Auxilium\_80 Start: 44633, Stop: 45004, Start Num: 6

Candidate Starts for Auxilium\_80:

(Start: 6 @44633 has 19 MA's), (10, 44669), (11, 44708), (17, 44774), (27, 44960),

Gene: BenchScraper\_81 Start: 45120, Stop: 45491, Start Num: 6

Candidate Starts for BenchScraper\_81:

(4, 45102), (Start: 6 @45120 has 19 MA's), (9, 45147), (10, 45156), (11, 45195), (17, 45261), (27, 45447),

Gene: BillyTP\_82 Start: 47112, Stop: 47480, Start Num: 6

Candidate Starts for BillyTP\_82:

(Start: 6 @47112 has 19 MA's), (10, 47148), (11, 47187), (17, 47253), (25, 47412), (27, 47439),

Gene: BlackSpider\_73 Start: 44040, Stop: 44408, Start Num: 6

Candidate Starts for BlackSpider\_73:

(4, 44022), (Start: 6 @44040 has 19 MA's), (9, 44067), (10, 44076), (11, 44115), (17, 44181), (24, 44268), (25, 44340), (27, 44367),

Gene: CookieBear\_78 Start: 45596, Stop: 45967, Start Num: 6

Candidate Starts for CookieBear\_78:

(Start: 6 @45596 has 19 MA's), (10, 45632), (11, 45671), (17, 45737), (25, 45896), (27, 45923),

Gene: EvePickles\_82 Start: 47802, Stop: 48173, Start Num: 6

Candidate Starts for EvePickles\_82:

(Start: 6 @47802 has 19 MA's), (10, 47838), (11, 47877), (12, 47880), (17, 47943), (27, 48129),

Gene: Faja\_84 Start: 47635, Stop: 48006, Start Num: 6

Candidate Starts for Faja\_84:

(Start: 6 @47635 has 19 MA's), (10, 47671), (11, 47710), (17, 47776), (27, 47962),

Gene: Globfish\_80 Start: 45288, Stop: 45689, Start Num: 6

Candidate Starts for Globfish\_80:

(Start: 6 @45288 has 19 MA's), (10, 45324), (11, 45363), (12, 45366), (17, 45429), (27, 45615), (29, 45663),

Gene: Gorpy\_79 Start: 46938, Stop: 47309, Start Num: 6

Candidate Starts for Gorpy\_79:

(Start: 6 @46938 has 19 MA's), (10, 46974), (11, 47013), (17, 47079), (27, 47265),

Gene: Hestia\_75 Start: 43858, Stop: 44226, Start Num: 6

Candidate Starts for Hestia\_75:

(Start: 6 @43858 has 19 MA's), (10, 43894), (11, 43933), (17, 43999), (24, 44086), (27, 44185),

Gene: Hillester\_85 Start: 47006, Stop: 47377, Start Num: 6  
Candidate Starts for Hillester\_85:  
(4, 46988), (Start: 6 @47006 has 19 MA's), (10, 47042), (11, 47081), (17, 47147), (27, 47333),

Gene: Isolde\_79 Start: 45812, Stop: 46192, Start Num: 6  
Candidate Starts for Isolde\_79:  
(Start: 6 @45812 has 19 MA's), (10, 45848), (11, 45887), (17, 45953), (26, 46118), (27, 46139),

Gene: Kukla\_62 Start: 38458, Stop: 38868, Start Num: 5  
Candidate Starts for Kukla\_62:  
(2, 38404), (Start: 5 @38458 has 4 MA's), (12, 38551), (21, 38707), (22, 38710),

Gene: Kumotta\_63 Start: 35107, Stop: 35496, Start Num: 6  
Candidate Starts for Kumotta\_63:  
(4, 35089), (Start: 6 @35107 has 19 MA's), (9, 35134), (10, 35143), (11, 35182), (14, 35194), (16, 35239),

Gene: Lawnathon\_81 Start: 46224, Stop: 46592, Start Num: 6  
Candidate Starts for Lawnathon\_81:  
(Start: 6 @46224 has 19 MA's), (10, 46260), (11, 46299), (17, 46365), (27, 46551),

Gene: MargaretKali\_59 Start: 33725, Stop: 34114, Start Num: 6  
Candidate Starts for MargaretKali\_59:  
(4, 33707), (Start: 6 @33725 has 19 MA's), (9, 33752), (10, 33761), (11, 33800), (14, 33812), (16, 33857),

Gene: MidnightRain\_87 Start: 47900, Stop: 48268, Start Num: 6  
Candidate Starts for MidnightRain\_87:  
(Start: 6 @47900 has 19 MA's), (10, 47936), (11, 47975), (17, 48041), (27, 48227),

Gene: Mufasa8\_51 Start: 37731, Stop: 38246, Start Num: 5  
Candidate Starts for Mufasa8\_51:  
(Start: 5 @37731 has 4 MA's), (11, 37824), (12, 37827), (13, 37833), (15, 37848), (28, 38091), (30, 38160),

Gene: Phrank15\_86 Start: 47383, Stop: 47754, Start Num: 6  
Candidate Starts for Phrank15\_86:  
(Start: 6 @47383 has 19 MA's), (10, 47419), (11, 47458), (17, 47524), (27, 47710),

Gene: RadFad\_86 Start: 47006, Stop: 47377, Start Num: 6  
Candidate Starts for RadFad\_86:  
(4, 46988), (Start: 6 @47006 has 19 MA's), (10, 47042), (11, 47081), (17, 47147), (27, 47333),

Gene: Raphaella\_82 Start: 45929, Stop: 46300, Start Num: 6  
Candidate Starts for Raphaella\_82:  
(Start: 6 @45929 has 19 MA's), (10, 45965), (11, 46004), (17, 46070), (27, 46256),

Gene: Raqqa\_80 Start: 46502, Stop: 46894, Start Num: 6  
Candidate Starts for Raqqa\_80:  
(Start: 6 @46502 has 19 MA's), (10, 46538), (11, 46577), (17, 46643), (27, 46829),

Gene: Richie\_84 Start: 47692, Stop: 48063, Start Num: 6  
Candidate Starts for Richie\_84:

(Start: 6 @47692 has 19 MA's), (10, 47728), (11, 47767), (17, 47833), (27, 48019),

Gene: Sakai\_78 Start: 45649, Stop: 46020, Start Num: 6

Candidate Starts for Sakai\_78:

(Start: 6 @45649 has 19 MA's), (10, 45685), (11, 45724), (17, 45790), (27, 45976),

Gene: Sarge\_57 Start: 32599, Stop: 32988, Start Num: 6

Candidate Starts for Sarge\_57:

(4, 32581), (Start: 6 @32599 has 19 MA's), (11, 32674), (17, 32740), (18, 32764), (29, 32974),

Gene: Sashimi\_81 Start: 46196, Stop: 46567, Start Num: 6

Candidate Starts for Sashimi\_81:

(Start: 6 @46196 has 19 MA's), (10, 46232), (11, 46271), (12, 46274), (19, 46376), (20, 46379), (27, 46523),

Gene: Seahorse\_89 Start: 51468, Stop: 51839, Start Num: 6

Candidate Starts for Seahorse\_89:

(4, 51450), (Start: 6 @51468 has 19 MA's), (10, 51504), (11, 51543), (17, 51609), (25, 51768), (27, 51795),

Gene: Sonali\_50 Start: 39812, Stop: 40261, Start Num: 5

Candidate Starts for Sonali\_50:

(1, 39725), (Start: 5 @39812 has 4 MA's), (12, 39905), (19, 40004),

Gene: SpicyFrank\_83 Start: 46180, Stop: 46551, Start Num: 6

Candidate Starts for SpicyFrank\_83:

(4, 46162), (Start: 6 @46180 has 19 MA's), (9, 46207), (10, 46216), (11, 46255), (17, 46321), (27, 46507),

Gene: ThayneTheZag\_86 Start: 46832, Stop: 47248, Start Num: 3

Candidate Starts for ThayneTheZag\_86:

(3, 46832), (7, 46880), (8, 46889), (27, 47204),

Gene: Tiff81\_82 Start: 45070, Stop: 45441, Start Num: 6

Candidate Starts for Tiff81\_82:

(Start: 6 @45070 has 19 MA's), (10, 45106), (11, 45145), (17, 45211), (27, 45397),

Gene: TripleJ\_63 Start: 38675, Stop: 39085, Start Num: 5

Candidate Starts for TripleJ\_63:

(Start: 5 @38675 has 4 MA's), (12, 38768), (17, 38831), (21, 38924), (22, 38927), (23, 38942),

Gene: YoungHarleezy\_79 Start: 46202, Stop: 46573, Start Num: 6

Candidate Starts for YoungHarleezy\_79:

(Start: 6 @46202 has 19 MA's), (10, 46238), (11, 46277), (17, 46343), (27, 46529),