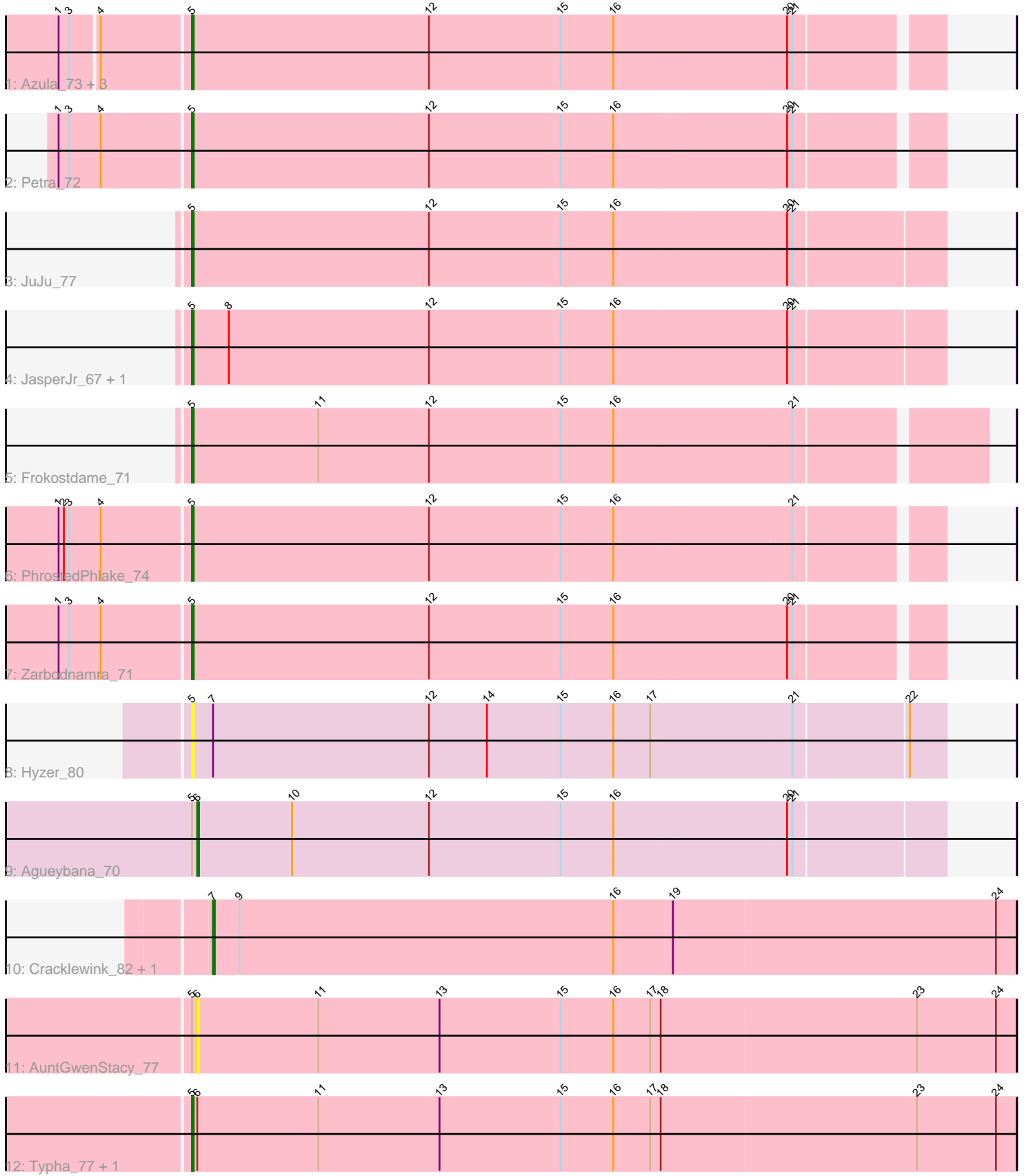


Pham 175128



Note: Tracks are now grouped by subcluster and scaled. Switching in subcluster is indicated by changes in track color. Track scale is now set by default to display the region 30 bp upstream of start 1 to 30 bp downstream of the last possible start. If this default region is judged to be packed too tightly with annotated starts, the track will be further scaled to only show that region of the ORF with annotated starts. This action will be indicated by adding "Zoomed" to the title. For starts, yellow indicates the location of called starts comprised solely of Glimmer/GeneMark auto-annotations, green indicates the location of called starts with at least 1 manual gene annotation.

Pham 175128 Report

This analysis was run 11/02/24 on database version 579.

Pham number 175128 has 18 members, 2 are drafts.

Phages represented in each track:

- Track 1 : Azula_73, Blueberry_72, Gambino_75, MissRona_73
- Track 2 : Petra_72
- Track 3 : JuJu_77
- Track 4 : JasperJr_67, Guacamole_67
- Track 5 : Frokostdame_71
- Track 6 : PhrostedPhlake_74
- Track 7 : Zarbodnamra_71
- Track 8 : Hyzer_80
- Track 9 : Agueybana_70
- Track 10 : Cracklewink_82, Bipper_82
- Track 11 : AuntGwenStacy_77
- Track 12 : Typha_77, Hilltopfarm_78

Summary of Final Annotations (See graph section above for start numbers):

The start number called the most often in the published annotations is 5, it was called in 13 of the 16 non-draft genes in the pham.

Genes that call this "Most Annotated" start:

- Azula_73, Blueberry_72, Frokostdame_71, Gambino_75, Guacamole_67, Hilltopfarm_78, Hyzer_80, JasperJr_67, JuJu_77, MissRona_73, Petra_72, PhrostedPhlake_74, Typha_77, Zarbodnamra_71,

Genes that have the "Most Annotated" start but do not call it:

- Agueybana_70, AuntGwenStacy_77,

Genes that do not have the "Most Annotated" start:

- Bipper_82, Cracklewink_82,

Summary by start number:

Start 5:

- Found in 16 of 18 (88.9%) of genes in pham
- Manual Annotations of this start: 13 of 16

- Called 87.5% of time when present
- Phage (with cluster) where this start called: Azula_73 (CV), Blueberry_72 (CV), Frokostdame_71 (CV), Gambino_75 (CV), Guacamole_67 (CV), Hilltopfarm_78 (Y), Hyzer_80 (CZ1), JasperJr_67 (CV), JuJu_77 (CV), MissRona_73 (CV), Petra_72 (CV), PhrostedPhlake_74 (CV), Typha_77 (Y), Zarbodnamra_71 (CV),

Start 6:

- Found in 4 of 18 (22.2%) of genes in pham
- Manual Annotations of this start: 1 of 16
- Called 50.0% of time when present
- Phage (with cluster) where this start called: Agueybana_70 (CZ1), AuntGwenStacy_77 (Y),

Start 7:

- Found in 3 of 18 (16.7%) of genes in pham
- Manual Annotations of this start: 2 of 16
- Called 66.7% of time when present
- Phage (with cluster) where this start called: Bipper_82 (Y), Cracklewink_82 (Y),

Summary by clusters:

There are 3 clusters represented in this pham: Y, CZ1, CV,

Info for manual annotations of cluster CV:

- Start number 5 was manually annotated 11 times for cluster CV.

Info for manual annotations of cluster CZ1:

- Start number 6 was manually annotated 1 time for cluster CZ1.

Info for manual annotations of cluster Y:

- Start number 5 was manually annotated 2 times for cluster Y.
- Start number 7 was manually annotated 2 times for cluster Y.

Gene Information:

Gene: Agueybana_70 Start: 46757, Stop: 47176, Start Num: 6

Candidate Starts for Agueybana_70:

(Start: 5 @46754 has 13 MA's), (Start: 6 @46757 has 1 MA's), (10, 46811), (12, 46889), (15, 46964), (16, 46994), (20, 47090), (21, 47093),

Gene: AuntGwenStacy_77 Start: 51888, Stop: 52352, Start Num: 6

Candidate Starts for AuntGwenStacy_77:

(Start: 5 @51885 has 13 MA's), (Start: 6 @51888 has 1 MA's), (11, 51957), (13, 52026), (15, 52095), (16, 52125), (17, 52146), (18, 52152), (23, 52296), (24, 52341),

Gene: Azula_73 Start: 46202, Stop: 46618, Start Num: 5

Candidate Starts for Azula_73:

(1, 46133), (3, 46139), (4, 46154), (Start: 5 @46202 has 13 MA's), (12, 46337), (15, 46412), (16, 46442), (20, 46538), (21, 46541),

Gene: Bipper_82 Start: 53819, Stop: 54274, Start Num: 7

Candidate Starts for Bipper_82:

(Start: 7 @53819 has 2 MA's), (9, 53834), (16, 54047), (19, 54080), (24, 54263),

Gene: Blueberry_72 Start: 46202, Stop: 46618, Start Num: 5

Candidate Starts for Blueberry_72:

(1, 46133), (3, 46139), (4, 46154), (Start: 5 @46202 has 13 MA's), (12, 46337), (15, 46412), (16, 46442), (20, 46538), (21, 46541),

Gene: Cracklewink_82 Start: 52871, Stop: 53326, Start Num: 7

Candidate Starts for Cracklewink_82:

(Start: 7 @52871 has 2 MA's), (9, 52886), (16, 53099), (19, 53132), (24, 53315),

Gene: Frokostdame_71 Start: 45512, Stop: 45952, Start Num: 5

Candidate Starts for Frokostdame_71:

(Start: 5 @45512 has 13 MA's), (11, 45584), (12, 45647), (15, 45722), (16, 45752), (21, 45851),

Gene: Gambino_75 Start: 46202, Stop: 46618, Start Num: 5

Candidate Starts for Gambino_75:

(1, 46133), (3, 46139), (4, 46154), (Start: 5 @46202 has 13 MA's), (12, 46337), (15, 46412), (16, 46442), (20, 46538), (21, 46541),

Gene: Guacamole_67 Start: 43197, Stop: 43619, Start Num: 5

Candidate Starts for Guacamole_67:

(Start: 5 @43197 has 13 MA's), (8, 43218), (12, 43332), (15, 43407), (16, 43437), (20, 43533), (21, 43536),

Gene: Hilltopfarm_78 Start: 51591, Stop: 52058, Start Num: 5

Candidate Starts for Hilltopfarm_78:

(Start: 5 @51591 has 13 MA's), (Start: 6 @51594 has 1 MA's), (11, 51663), (13, 51732), (15, 51801), (16, 51831), (17, 51852), (18, 51858), (23, 52002), (24, 52047),

Gene: Hyzer_80 Start: 53106, Stop: 53528, Start Num: 5

Candidate Starts for Hyzer_80:

(Start: 5 @53106 has 13 MA's), (Start: 7 @53118 has 2 MA's), (12, 53241), (14, 53274), (15, 53316), (16, 53346), (17, 53367), (21, 53445), (22, 53508),

Gene: JasperJr_67 Start: 43197, Stop: 43619, Start Num: 5

Candidate Starts for JasperJr_67:

(Start: 5 @43197 has 13 MA's), (8, 43218), (12, 43332), (15, 43407), (16, 43437), (20, 43533), (21, 43536),

Gene: JuJu_77 Start: 47933, Stop: 48355, Start Num: 5

Candidate Starts for JuJu_77:

(Start: 5 @47933 has 13 MA's), (12, 48068), (15, 48143), (16, 48173), (20, 48269), (21, 48272),

Gene: MissRona_73 Start: 46203, Stop: 46619, Start Num: 5

Candidate Starts for MissRona_73:

(1, 46134), (3, 46140), (4, 46155), (Start: 5 @46203 has 13 MA's), (12, 46338), (15, 46413), (16, 46443), (20, 46539), (21, 46542),

Gene: Petra_72 Start: 44355, Stop: 44771, Start Num: 5

Candidate Starts for Petra_72:

(1, 44283), (3, 44289), (4, 44307), (Start: 5 @44355 has 13 MA's), (12, 44490), (15, 44565), (16, 44595), (20, 44691), (21, 44694),

Gene: PhrostedPhlake_74 Start: 44603, Stop: 45019, Start Num: 5

Candidate Starts for PhrostedPhlake_74:

(1, 44531), (2, 44534), (3, 44537), (4, 44555), (Start: 5 @44603 has 13 MA's), (12, 44738), (15, 44813), (16, 44843), (21, 44942),

Gene: Typha_77 Start: 51885, Stop: 52352, Start Num: 5

Candidate Starts for Typha_77:

(Start: 5 @51885 has 13 MA's), (Start: 6 @51888 has 1 MA's), (11, 51957), (13, 52026), (15, 52095), (16, 52125), (17, 52146), (18, 52152), (23, 52296), (24, 52341),

Gene: Zarbodnamra_71 Start: 43296, Stop: 43712, Start Num: 5

Candidate Starts for Zarbodnamra_71:

(1, 43224), (3, 43230), (4, 43248), (Start: 5 @43296 has 13 MA's), (12, 43431), (15, 43506), (16, 43536), (20, 43632), (21, 43635),