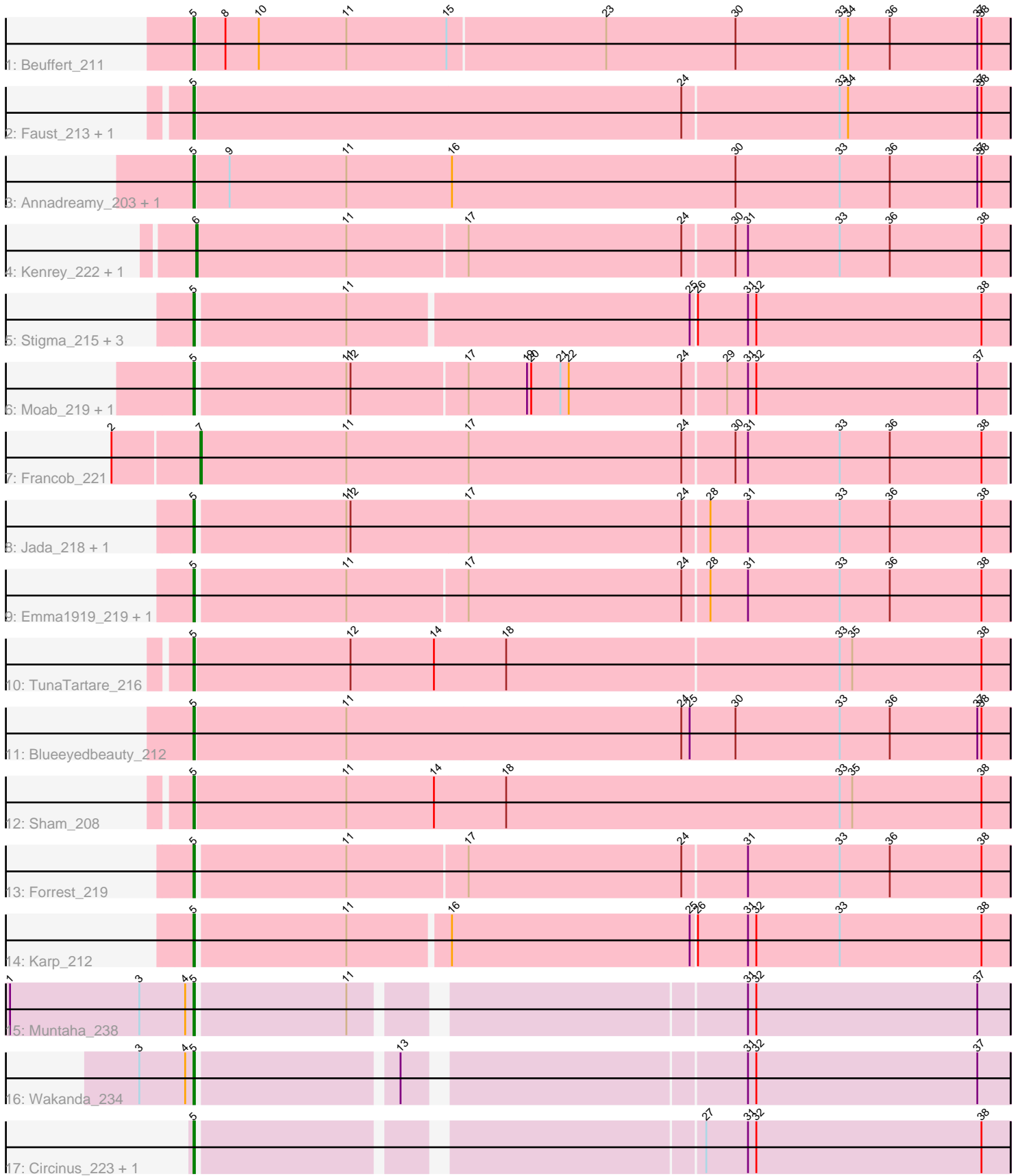


# Pham 176485



Note: Tracks are now grouped by subcluster and scaled. Switching in subcluster is indicated by changes in track color. Track scale is now set by default to display the region 30 bp upstream of start 1 to 30 bp downstream of the last possible start. If this default region is judged to be packed too tightly with annotated starts, the track will be further scaled to only show that region of the ORF with annotated starts. This action will be indicated by adding "Zoomed" to the title. For starts, yellow indicates the location of called starts comprised solely of Glimmer/GeneMark auto-annotations, green indicates the location of called starts with at least 1 manual gene annotation.

## Pham 176485 Report

This analysis was run 11/02/24 on database version 579.

Pham number 176485 has 27 members, 1 are drafts.

Phages represented in each track:

- Track 1 : Beuffert\_211
- Track 2 : Faust\_213, SeresaTree\_217
- Track 3 : Annadreamy\_203, Limpid\_210
- Track 4 : Kenrey\_222, Phredrick\_221
- Track 5 : Stigma\_215, Comrade\_213, Belfort\_216, SparkleGoddess\_216
- Track 6 : Moab\_219, Patelgo\_220
- Track 7 : Francob\_221
- Track 8 : Jada\_218, Gilson\_216
- Track 9 : Emma1919\_219, MeganTheeKilla\_221
- Track 10 : TunaTartare\_216
- Track 11 : Blueeyedbeauty\_212
- Track 12 : Sham\_208
- Track 13 : Forrest\_219
- Track 14 : Karp\_212
- Track 15 : Muntaha\_238
- Track 16 : Wakanda\_234
- Track 17 : Circinus\_223, BillNye\_223

### ***Summary of Final Annotations (See graph section above for start numbers):***

The start number called the most often in the published annotations is 5, it was called in 23 of the 26 non-draft genes in the pham.

Genes that call this "Most Annotated" start:

- Annadreamy\_203, Belfort\_216, Beuffert\_211, BillNye\_223, Blueeyedbeauty\_212, Circinus\_223, Comrade\_213, Emma1919\_219, Faust\_213, Forrest\_219, Gilson\_216, Jada\_218, Karp\_212, Limpid\_210, MeganTheeKilla\_221, Moab\_219, Muntaha\_238, Patelgo\_220, SeresaTree\_217, Sham\_208, SparkleGoddess\_216, Stigma\_215, TunaTartare\_216, Wakanda\_234,

Genes that have the "Most Annotated" start but do not call it:

- 

Genes that do not have the "Most Annotated" start:

- Francob\_221, Kenrey\_222, Phredrick\_221,

### Summary by start number:

#### Start 5:

- Found in 24 of 27 ( 88.9% ) of genes in pham
- Manual Annotations of this start: 23 of 26
- Called 100.0% of time when present
- Phage (with cluster) where this start called: Annadreamy\_203 (BK1), Belfort\_216 (BK1), Beuffert\_211 (BK1), BillNye\_223 (BK2), Blueeyedbeauty\_212 (BK1), Circinus\_223 (BK2), Comrade\_213 (BK1), Emma1919\_219 (BK1), Faust\_213 (BK1), Forrest\_219 (BK1), Gilson\_216 (BK1), Jada\_218 (BK1), Karp\_212 (BK1), Limpid\_210 (BK1), MeganTheeKilla\_221 (BK1), Moab\_219 (BK1), Muntaha\_238 (BK2), Patelgo\_220 (BK1), SeresaTree\_217 (BK1), Sham\_208 (BK1), SparkleGoddess\_216 (BK1), Stigma\_215 (BK1), TunaTartare\_216 (BK1), Wakanda\_234 (BK2),

#### Start 6:

- Found in 2 of 27 ( 7.4% ) of genes in pham
- Manual Annotations of this start: 2 of 26
- Called 100.0% of time when present
- Phage (with cluster) where this start called: Kenrey\_222 (BK1), Phredrick\_221 (BK1),

#### Start 7:

- Found in 1 of 27 ( 3.7% ) of genes in pham
- Manual Annotations of this start: 1 of 26
- Called 100.0% of time when present
- Phage (with cluster) where this start called: Francob\_221 (BK1),

### Summary by clusters:

There are 2 clusters represented in this pham: BK1, BK2,

#### Info for manual annotations of cluster BK1:

- Start number 5 was manually annotated 19 times for cluster BK1.
- Start number 6 was manually annotated 2 times for cluster BK1.
- Start number 7 was manually annotated 1 time for cluster BK1.

#### Info for manual annotations of cluster BK2:

- Start number 5 was manually annotated 4 times for cluster BK2.

### Gene Information:

Gene: Annadreamy\_203 Start: 102370, Stop: 102954, Start Num: 5

Candidate Starts for Annadreamy\_203:

(Start: 5 @102370 has 23 MA's), (9, 102394), (11, 102478), (16, 102553), (30, 102757), (33, 102832), (36, 102868), (37, 102931), (38, 102934),

Gene: Belfort\_216 Start: 107020, Stop: 107592, Start Num: 5

Candidate Starts for Belfort\_216:

(Start: 5 @107020 has 23 MA's), (11, 107125), (25, 107365), (26, 107368), (31, 107404), (32, 107410), (38, 107572),

Gene: Beuffert\_211 Start: 106544, Stop: 107125, Start Num: 5

Candidate Starts for Beuffert\_211:

(Start: 5 @106544 has 23 MA's), (8, 106565), (10, 106589), (11, 106652), (15, 106724), (23, 106835), (30, 106928), (33, 107003), (34, 107009), (36, 107039), (37, 107102), (38, 107105),

Gene: BillNye\_223 Start: 114572, Stop: 115123, Start Num: 5

Candidate Starts for BillNye\_223:

(Start: 5 @114572 has 23 MA's), (27, 114905), (31, 114935), (32, 114941), (38, 115103),

Gene: Blueeyedbeauty\_212 Start: 106098, Stop: 106682, Start Num: 5

Candidate Starts for Blueeyedbeauty\_212:

(Start: 5 @106098 has 23 MA's), (11, 106206), (24, 106446), (25, 106452), (30, 106485), (33, 106560), (36, 106596), (37, 106659), (38, 106662),

Gene: Circinus\_223 Start: 114162, Stop: 114713, Start Num: 5

Candidate Starts for Circinus\_223:

(Start: 5 @114162 has 23 MA's), (27, 114495), (31, 114525), (32, 114531), (38, 114693),

Gene: Comrade\_213 Start: 107220, Stop: 107792, Start Num: 5

Candidate Starts for Comrade\_213:

(Start: 5 @107220 has 23 MA's), (11, 107325), (25, 107565), (26, 107568), (31, 107604), (32, 107610), (38, 107772),

Gene: Emma1919\_219 Start: 105779, Stop: 106354, Start Num: 5

Candidate Starts for Emma1919\_219:

(Start: 5 @105779 has 23 MA's), (11, 105884), (17, 105968), (24, 106121), (28, 106139), (31, 106166), (33, 106232), (36, 106268), (38, 106334),

Gene: Faust\_213 Start: 107734, Stop: 108315, Start Num: 5

Candidate Starts for Faust\_213:

(Start: 5 @107734 has 23 MA's), (24, 108082), (33, 108193), (34, 108199), (37, 108292), (38, 108295),

Gene: Forrest\_219 Start: 106744, Stop: 107319, Start Num: 5

Candidate Starts for Forrest\_219:

(Start: 5 @106744 has 23 MA's), (11, 106849), (17, 106933), (24, 107086), (31, 107131), (33, 107197), (36, 107233), (38, 107299),

Gene: Francob\_221 Start: 106785, Stop: 107360, Start Num: 7

Candidate Starts for Francob\_221:

(2, 106725), (Start: 7 @106785 has 1 MA's), (11, 106890), (17, 106977), (24, 107130), (30, 107166), (31, 107175), (33, 107241), (36, 107277), (38, 107343),

Gene: Gilson\_216 Start: 105302, Stop: 105880, Start Num: 5

Candidate Starts for Gilson\_216:

(Start: 5 @105302 has 23 MA's), (11, 105407), (12, 105410), (17, 105494), (24, 105647), (28, 105665), (31, 105692), (33, 105758), (36, 105794), (38, 105860),

Gene: Jada\_218 Start: 105978, Stop: 106556, Start Num: 5

Candidate Starts for Jada\_218:

(Start: 5 @105978 has 23 MA's), (11, 106083), (12, 106086), (17, 106170), (24, 106323), (28, 106341), (31, 106368), (33, 106434), (36, 106470), (38, 106536),

Gene: Karp\_212 Start: 107387, Stop: 107959, Start Num: 5

Candidate Starts for Karp\_212:

(Start: 5 @107387 has 23 MA's), (11, 107492), (16, 107561), (25, 107732), (26, 107735), (31, 107771), (32, 107777), (33, 107837), (38, 107939),

Gene: Kenrey\_222 Start: 106523, Stop: 107101, Start Num: 6

Candidate Starts for Kenrey\_222:

(Start: 6 @106523 has 2 MA's), (11, 106631), (17, 106715), (24, 106868), (30, 106904), (31, 106913), (33, 106979), (36, 107015), (38, 107081),

Gene: Limpid\_210 Start: 107683, Stop: 108267, Start Num: 5

Candidate Starts for Limpid\_210:

(Start: 5 @107683 has 23 MA's), (9, 107707), (11, 107791), (16, 107866), (30, 108070), (33, 108145), (36, 108181), (37, 108244), (38, 108247),

Gene: MeganTheeKilla\_221 Start: 106176, Stop: 106751, Start Num: 5

Candidate Starts for MeganTheeKilla\_221:

(Start: 5 @106176 has 23 MA's), (11, 106281), (17, 106365), (24, 106518), (28, 106536), (31, 106563), (33, 106629), (36, 106665), (38, 106731),

Gene: Moab\_219 Start: 108643, Stop: 109215, Start Num: 5

Candidate Starts for Moab\_219:

(Start: 5 @108643 has 23 MA's), (11, 108748), (12, 108751), (17, 108832), (19, 108874), (20, 108877), (21, 108898), (22, 108904), (24, 108985), (29, 109015), (31, 109030), (32, 109036), (37, 109195),

Gene: Muntaha\_238 Start: 114741, Stop: 115292, Start Num: 5

Candidate Starts for Muntaha\_238:

(1, 114609), (3, 114702), (4, 114735), (Start: 5 @114741 has 23 MA's), (11, 114846), (31, 115104), (32, 115110), (37, 115269),

Gene: Patelgo\_220 Start: 109073, Stop: 109645, Start Num: 5

Candidate Starts for Patelgo\_220:

(Start: 5 @109073 has 23 MA's), (11, 109178), (12, 109181), (17, 109262), (19, 109304), (20, 109307), (21, 109328), (22, 109334), (24, 109415), (29, 109445), (31, 109460), (32, 109466), (37, 109625),

Gene: Phredrick\_221 Start: 105576, Stop: 106154, Start Num: 6

Candidate Starts for Phredrick\_221:

(Start: 6 @105576 has 2 MA's), (11, 105684), (17, 105768), (24, 105921), (30, 105957), (31, 105966), (33, 106032), (36, 106068), (38, 106134),

Gene: SeresaTree\_217 Start: 107720, Stop: 108301, Start Num: 5

Candidate Starts for SeresaTree\_217:

(Start: 5 @107720 has 23 MA's), (24, 108068), (33, 108179), (34, 108185), (37, 108278), (38, 108281),

Gene: Sham\_208 Start: 108598, Stop: 109182, Start Num: 5

Candidate Starts for Sham\_208:

(Start: 5 @108598 has 23 MA's), (11, 108706), (14, 108769), (18, 108820), (33, 109060), (35, 109069), (38, 109162),

Gene: SparkleGoddess\_216 Start: 107448, Stop: 108020, Start Num: 5

Candidate Starts for SparkleGoddess\_216:

(Start: 5 @107448 has 23 MA's), (11, 107553), (25, 107793), (26, 107796), (31, 107832), (32, 107838), (38, 108000),

Gene: Stigma\_215 Start: 107654, Stop: 108226, Start Num: 5

Candidate Starts for Stigma\_215:

(Start: 5 @107654 has 23 MA's), (11, 107759), (25, 107999), (26, 108002), (31, 108038), (32, 108044), (38, 108206),

Gene: TunaTartare\_216 Start: 110896, Stop: 111477, Start Num: 5

Candidate Starts for TunaTartare\_216:

(Start: 5 @110896 has 23 MA's), (12, 111007), (14, 111067), (18, 111118), (33, 111355), (35, 111364), (38, 111457),

Gene: Wakanda\_234 Start: 113728, Stop: 114279, Start Num: 5

Candidate Starts for Wakanda\_234:

(3, 113689), (4, 113722), (Start: 5 @113728 has 23 MA's), (13, 113863), (31, 114091), (32, 114097), (37, 114256),