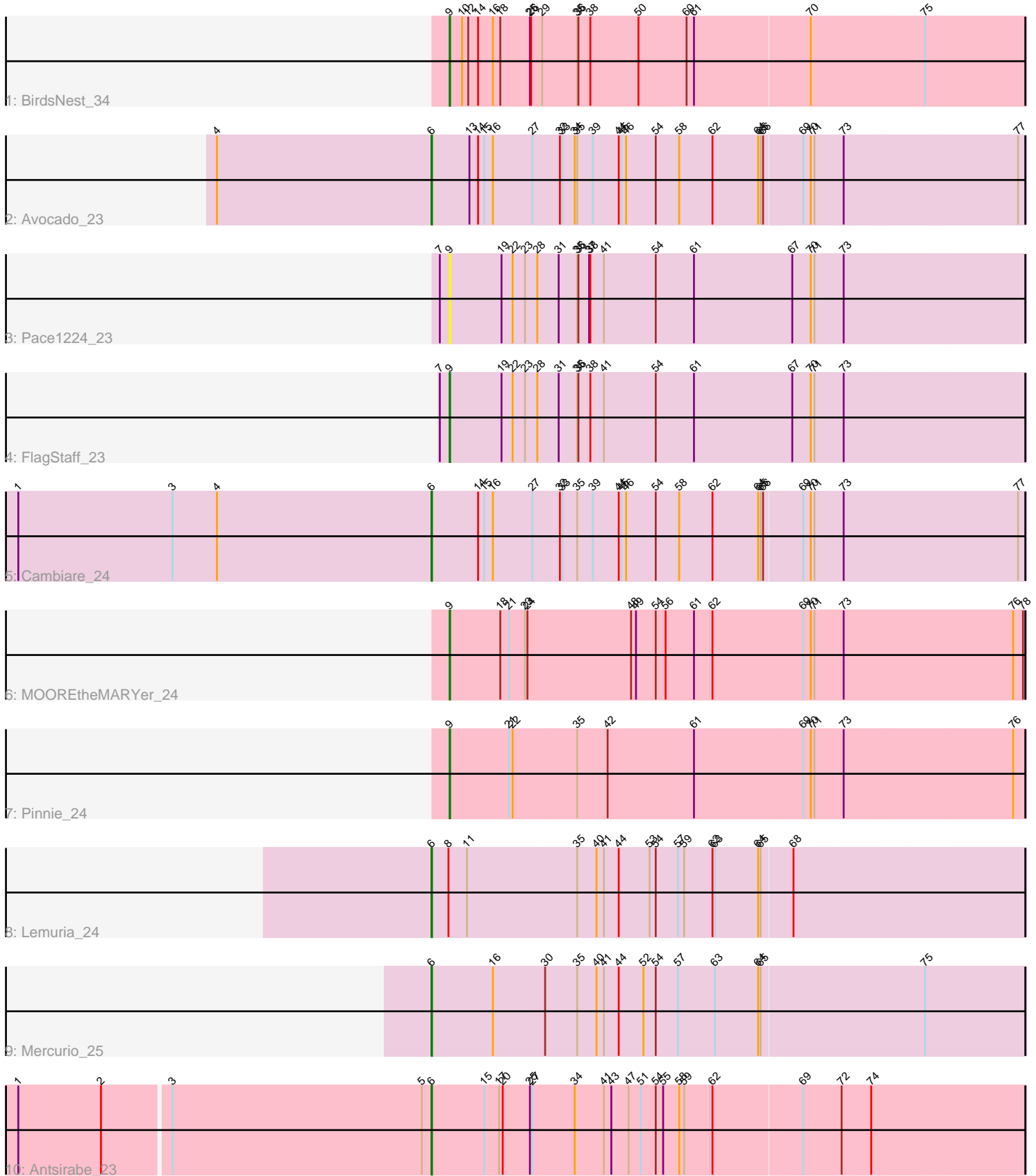


Pham 176775



Note: Tracks are now grouped by subcluster and scaled. Switching in subcluster is indicated by changes in track color. Track scale is now set by default to display the region 30 bp upstream of start 1 to 30 bp downstream of the last possible start. If this default region is judged to be packed too tightly with annotated starts, the track will be further scaled to only show that region of the ORF with annotated starts. This action will be indicated by adding "Zoomed" to the title. For starts, yellow indicates the location of called starts comprised solely of Glimmer/GeneMark auto-annotations, green indicates the location of called starts with at least 1 manual gene annotation.

Pham 176775 Report

This analysis was run 11/02/24 on database version 579.

Pham number 176775 has 10 members, 1 are drafts.

Phages represented in each track:

- Track 1 : BirdsNest_34
- Track 2 : Avocado_23
- Track 3 : Pace1224_23
- Track 4 : FlagStaff_23
- Track 5 : Cambiare_24
- Track 6 : MOOREtheMARYer_24
- Track 7 : Pinnie_24
- Track 8 : Lemuria_24
- Track 9 : Mercurio_25
- Track 10 : Antsirabe_23

Summary of Final Annotations (See graph section above for start numbers):

The start number called the most often in the published annotations is 6, it was called in 5 of the 9 non-draft genes in the pham.

Genes that call this "Most Annotated" start:

- Antsirabe_23, Avocado_23, Cambiare_24, Lemuria_24, Mercurio_25,

Genes that have the "Most Annotated" start but do not call it:

-

Genes that do not have the "Most Annotated" start:

- BirdsNest_34, FlagStaff_23, MOOREtheMARYer_24, Pace1224_23, Pinnie_24,

Summary by start number:

Start 6:

- Found in 5 of 10 (50.0%) of genes in pham
- Manual Annotations of this start: 5 of 9
- Called 100.0% of time when present
- Phage (with cluster) where this start called: Antsirabe_23 (G5), Avocado_23 (G2), Cambiare_24 (G2), Lemuria_24 (G4), Mercurio_25 (G4),

Start 9:

- Found in 5 of 10 (50.0%) of genes in pham
- Manual Annotations of this start: 4 of 9
- Called 100.0% of time when present
- Phage (with cluster) where this start called: BirdsNest_34 (B13), FlagStaff_23 (G2), MOOREtheMARYer_24 (G3), Pace1224_23 (G2), Pinnie_24 (G3),

Summary by clusters:

There are 5 clusters represented in this pham: G5, G4, G3, G2, B13,

Info for manual annotations of cluster B13:

- Start number 9 was manually annotated 1 time for cluster B13.

Info for manual annotations of cluster G2:

- Start number 6 was manually annotated 2 times for cluster G2.
- Start number 9 was manually annotated 1 time for cluster G2.

Info for manual annotations of cluster G3:

- Start number 9 was manually annotated 2 times for cluster G3.

Info for manual annotations of cluster G4:

- Start number 6 was manually annotated 2 times for cluster G4.

Info for manual annotations of cluster G5:

- Start number 6 was manually annotated 1 time for cluster G5.

Gene Information:

Gene: Antsirabe_23 Start: 23216, Stop: 24619, Start Num: 6

Candidate Starts for Antsirabe_23:

(1, 22226), (2, 22427), (3, 22586), (5, 23192), (Start: 6 @23216 has 5 MA's), (15, 23342), (17, 23378), (20, 23387), (25, 23453), (27, 23459), (34, 23561), (41, 23630), (43, 23648), (47, 23690), (51, 23720), (54, 23756), (55, 23774), (58, 23813), (59, 23825), (62, 23894), (69, 24104), (72, 24191), (74, 24260),

Gene: Avocado_23 Start: 23240, Stop: 24646, Start Num: 6

Candidate Starts for Avocado_23:

(4, 22718), (Start: 6 @23240 has 5 MA's), (13, 23330), (14, 23351), (15, 23366), (16, 23387), (27, 23483), (32, 23549), (33, 23555), (34, 23585), (35, 23591), (39, 23624), (44, 23687), (45, 23693), (46, 23705), (54, 23777), (58, 23831), (62, 23909), (64, 24020), (65, 24026), (66, 24032), (69, 24122), (70, 24140), (71, 24149), (73, 24215), (77, 24629),

Gene: BirdsNest_34 Start: 30801, Stop: 32168, Start Num: 9

Candidate Starts for BirdsNest_34:

(Start: 9 @30801 has 4 MA's), (10, 30831), (12, 30843), (14, 30867), (16, 30903), (18, 30921), (25, 30993), (26, 30996), (29, 31023), (35, 31107), (36, 31110), (38, 31137), (50, 31254), (60, 31368), (61, 31386), (70, 31662), (75, 31929),

Gene: Cambiare_24 Start: 23705, Stop: 25111, Start Num: 6

Candidate Starts for Cambiare_24:

(1, 22700), (3, 23075), (4, 23183), (Start: 6 @23705 has 5 MA's), (14, 23816), (15, 23831), (16, 23852), (27, 23948), (32, 24014), (33, 24020), (35, 24056), (39, 24089), (44, 24152), (45, 24158), (46, 24170), (54, 24242), (58, 24296), (62, 24374), (64, 24485), (65, 24491), (66, 24497), (69, 24587), (70, 24605), (71, 24614), (73, 24680), (77, 25094),

Gene: FlagStaff_23 Start: 23102, Stop: 24469, Start Num: 9

Candidate Starts for FlagStaff_23:

(7, 23078), (Start: 9 @23102 has 4 MA's), (19, 23225), (22, 23252), (23, 23282), (28, 23312), (31, 23363), (35, 23408), (36, 23411), (38, 23438), (41, 23471), (54, 23597), (61, 23687), (67, 23924), (70, 23969), (71, 23978), (73, 24044),

Gene: Lemuria_24 Start: 23055, Stop: 24455, Start Num: 6

Candidate Starts for Lemuria_24:

(Start: 6 @23055 has 5 MA's), (8, 23094), (11, 23139), (35, 23406), (40, 23451), (41, 23469), (44, 23505), (53, 23580), (54, 23595), (57, 23646), (59, 23661), (62, 23727), (63, 23733), (64, 23838), (65, 23844), (68, 23916),

Gene: MOOREtheMARYer_24 Start: 23264, Stop: 24634, Start Num: 9

Candidate Starts for MOOREtheMARYer_24:

(Start: 9 @23264 has 4 MA's), (18, 23384), (21, 23405), (23, 23444), (24, 23450), (48, 23699), (49, 23711), (54, 23759), (56, 23783), (61, 23849), (62, 23894), (69, 24113), (70, 24131), (71, 24140), (73, 24206), (76, 24605), (78, 24629),

Gene: Mercurio_25 Start: 23665, Stop: 25065, Start Num: 6

Candidate Starts for Mercurio_25:

(Start: 6 @23665 has 5 MA's), (16, 23812), (30, 23938), (35, 24016), (40, 24061), (41, 24079), (44, 24115), (52, 24175), (54, 24205), (57, 24256), (63, 24343), (64, 24448), (65, 24454), (75, 24832),

Gene: Pace1224_23 Start: 23102, Stop: 24469, Start Num: 9

Candidate Starts for Pace1224_23:

(7, 23078), (Start: 9 @23102 has 4 MA's), (19, 23225), (22, 23252), (23, 23282), (28, 23312), (31, 23363), (35, 23408), (36, 23411), (37, 23435), (38, 23438), (41, 23471), (54, 23597), (61, 23687), (67, 23924), (70, 23969), (71, 23978), (73, 24044),

Gene: Pinnie_24 Start: 23643, Stop: 25013, Start Num: 9

Candidate Starts for Pinnie_24:

(Start: 9 @23643 has 4 MA's), (21, 23784), (22, 23793), (35, 23949), (42, 24021), (61, 24228), (69, 24492), (70, 24510), (71, 24519), (73, 24585), (76, 24984),