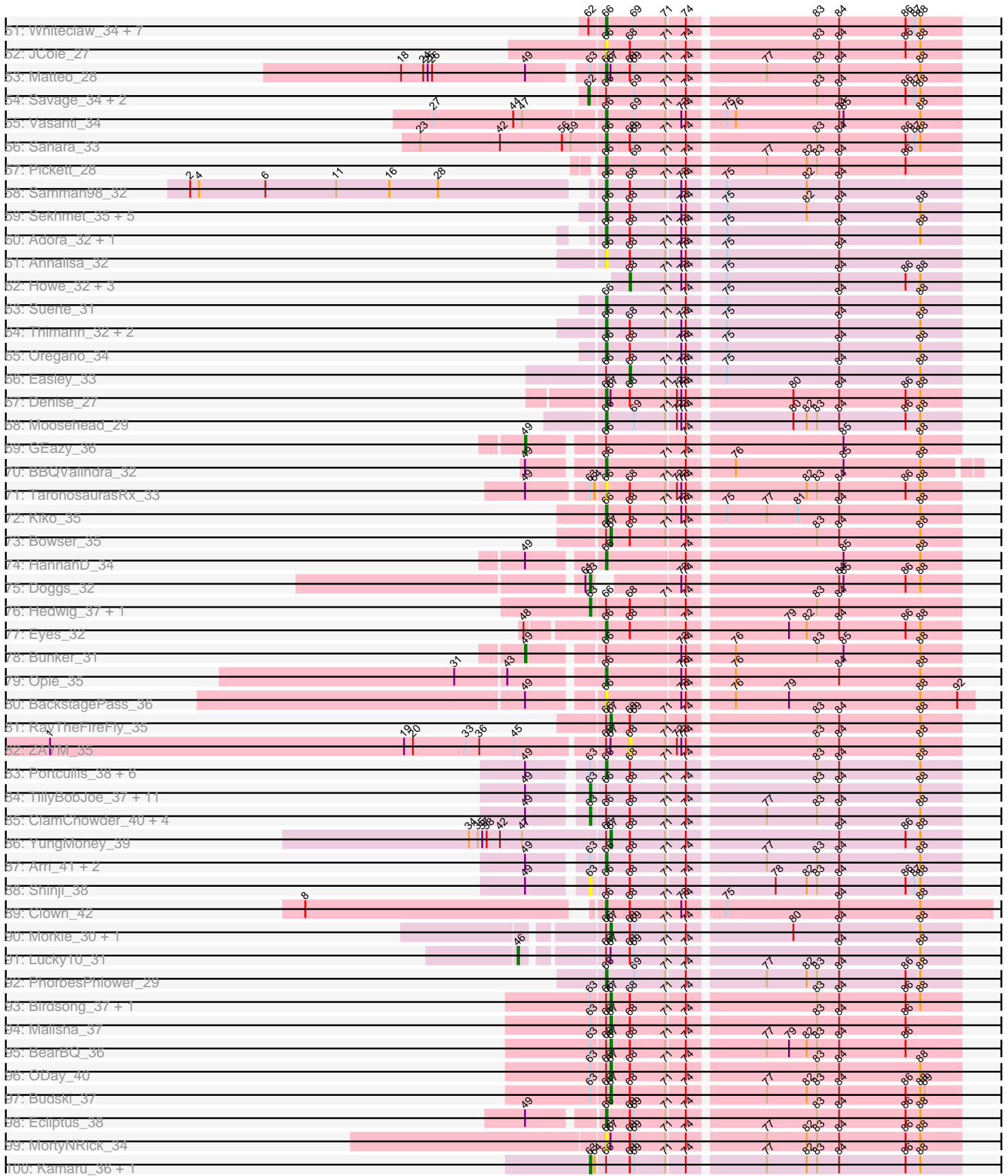
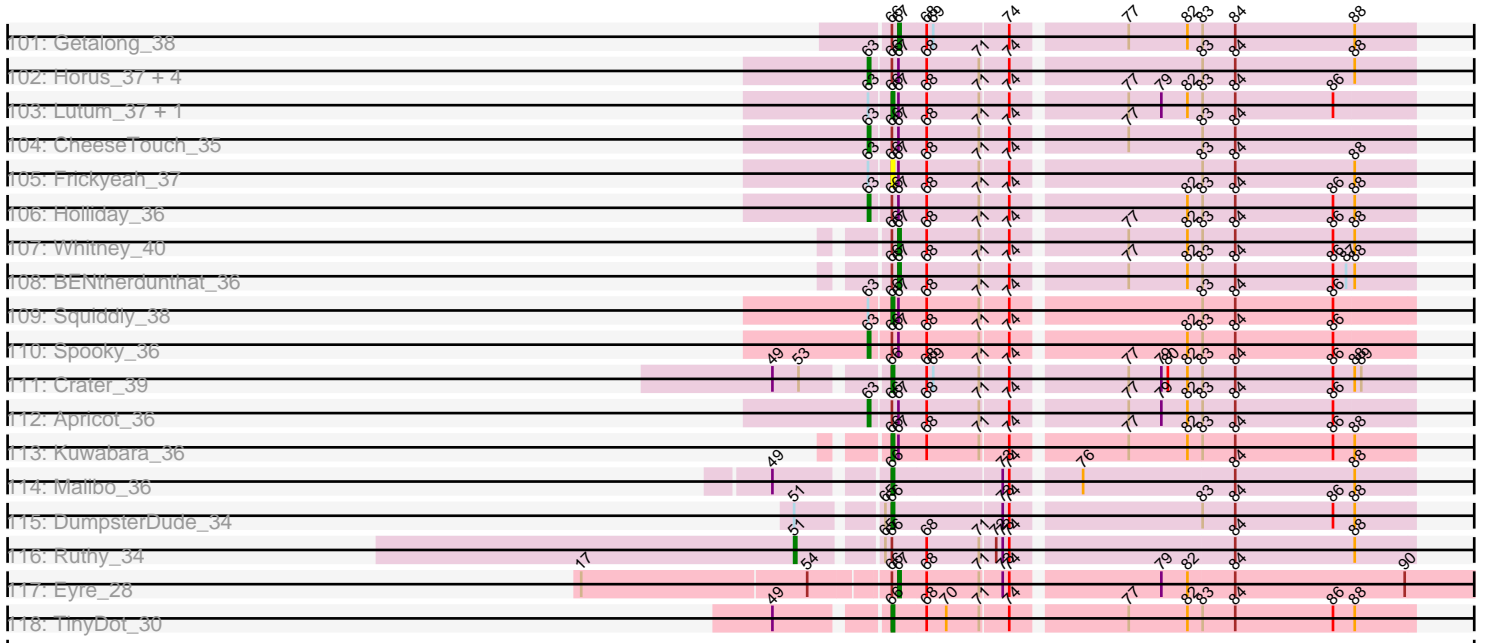


Pham 177485



Pham 177485



Note: Tracks are now grouped by subcluster and scaled. Switching in subcluster is indicated by changes in track color. Track scale is now set by default to display the region 30 bp upstream of start 1 to 30 bp downstream of the last possible start. If this default region is judged to be packed too tightly with annotated starts, the track will be further scaled to only show that region of the ORF with annotated starts. This action will be indicated by adding "Zoomed" to the title. For starts, yellow indicates the location of called starts comprised solely of Glimmer/GeneMark auto-annotations, green indicates the location of called starts with at least 1 manual gene annotation.

Pham 177485 Report

This analysis was run 11/02/24 on database version 579.

Pham number 177485 has 187 members, 14 are drafts.

Phages represented in each track:

- Track 1 : KappaFarmDelta_37
- Track 2 : Azula_35
- Track 3 : Walrus_36
- Track 4 : William_35
- Track 5 : PrincePatrick_33
- Track 6 : Hitter_34, Archis_36
- Track 7 : Jalammah_36
- Track 8 : CaptainKirk2_34, Delian_35
- Track 9 : Wisp_30
- Track 10 : Begonia_36, Malachai_36
- Track 11 : PCoral7_34, Toast_34
- Track 12 : JasperJr_34, UmaThurman_31, Guacamole_34
- Track 13 : Petra_35
- Track 14 : Obliviate_32, ZiggyZoo_34
- Track 15 : CarolAnn_37, Blino_37
- Track 16 : MissRona_35
- Track 17 : Lysidious_35
- Track 18 : Blueberry_35, Gambino_36
- Track 19 : Fairfaxidum_37
- Track 20 : Samba_36
- Track 21 : PhrostedPhlake_36
- Track 22 : Wocket_36
- Track 23 : Barco_35
- Track 24 : Frokostdame_35
- Track 25 : MintFen_33
- Track 26 : Fenry_33
- Track 27 : Zarbodnamra_33
- Track 28 : JuJu_36
- Track 29 : Pytheas_35, Jablanski_35
- Track 30 : LonelyBoi_32
- Track 31 : Cashline_35
- Track 32 : Floral_33, Pollux_34
- Track 33 : EMSquaredA_32, Marteena_32
- Track 34 : Confidence_30
- Track 35 : Angelique_35
- Track 36 : EnalisNailo_32
- Track 37 : Bradissa_32

- Track 38 : Lilas_35
- Track 39 : BritBrat_31
- Track 40 : Ohgeesy_34
- Track 41 : Bunnybear_27
- Track 42 : Lton_27
- Track 43 : Pepperoni_29
- Track 44 : Herod_31, Hugley_30
- Track 45 : Eviarto_31, Nymphadora_31, TimTam_31
- Track 46 : BatStarr_31, Bosnia_31
- Track 47 : BoyNamedSue_36, AlumE_36
- Track 48 : WelcomeAyanna_35
- Track 49 : ThankyouJordi_35
- Track 50 : Agueybana_33
- Track 51 : Whiteclaw_34, Clap_34, Mocha12_34, Haley23_34, GemG_34, Cynthia_34, TueritoX_34, Gizermo_34
- Track 52 : JCole_27
- Track 53 : Matteo_28
- Track 54 : Savage_34, Ebert_35, Sproutie_34
- Track 55 : Vasanti_34
- Track 56 : Sahara_33
- Track 57 : Pickett_28
- Track 58 : Samman98_32
- Track 59 : Sekhmet_35, DobbysSock_28, Dorito_30, MichaelScott_33, Beenie_28, Clark_33
- Track 60 : Adora_32, Powerball_35
- Track 61 : Annalisa_32
- Track 62 : Howe_32, Hortense_32, Twinkle_32, Shlim410_32
- Track 63 : Suerte_31
- Track 64 : Thimann_32, PhriskyACE_33, Mcklovin_32
- Track 65 : Oregano_34
- Track 66 : Easley_33
- Track 67 : Denise_27
- Track 68 : Moosehead_29
- Track 69 : GEazy_36
- Track 70 : BBQValindra_32
- Track 71 : TaronosaurusRx_33
- Track 72 : Kiko_35
- Track 73 : Bowser_35
- Track 74 : HannahD_34
- Track 75 : Doggs_32
- Track 76 : Hedwig_37, DirtyBoi_35
- Track 77 : Eyes_32
- Track 78 : Bunker_31
- Track 79 : Opie_35
- Track 80 : BackstagePass_36
- Track 81 : RayTheFireFly_35
- Track 82 : ZAYM_35
- Track 83 : Portcullis_38, PullumCavea_37, Jambalaya_37, Phlop_37, Fireball_38, Togo_37, Savbucketdawg_37
- Track 84 : TillyBobJoe_37, SmokingBunny_37, Gezellig_38, Wizard_37, Halo3_38, Twister6_40, KimmyK_39, Evamon_37, Nubi_38, Danyall_40, CoveyB_41, Salvador_37

- Track 85 : ClamChowder_40, Valary_40, Barb_40, PinkCoffee_40, RogerDodger_41
- Track 86 : YungMoney_39
- Track 87 : Arri_41, VanDeWege_41, Fugax_41
- Track 88 : Shinji_38
- Track 89 : Clown_42
- Track 90 : Morkie_30, OneDirection_28
- Track 91 : Lucky10_31
- Track 92 : PhorbessPhlower_29
- Track 93 : Birdsong_37, Phabuloso_34
- Track 94 : Malisha_37
- Track 95 : BearBQ_36
- Track 96 : ODay_40
- Track 97 : Budski_37
- Track 98 : Ecliptus_38
- Track 99 : MortyNRick_34
- Track 100 : Kamaru_36, LitninMcQueen_35
- Track 101 : Getalong_38
- Track 102 : Horus_37, Phistory_37, Asapag_37, Leroy_37, Periwinkle_40
- Track 103 : Lutum_37, Kenna_36
- Track 104 : CheeseTouch_35
- Track 105 : Frickyeah_37
- Track 106 : Holliday_36
- Track 107 : Whitney_40
- Track 108 : BENtherdunthat_36
- Track 109 : Squiddly_38
- Track 110 : Spooky_36
- Track 111 : Crater_39
- Track 112 : Apricot_36
- Track 113 : Kuwabara_36
- Track 114 : Malibo_36
- Track 115 : DumpsterDude_34
- Track 116 : Ruthy_34
- Track 117 : Eyre_28
- Track 118 : TinyDot_30

Summary of Final Annotations (See graph section above for start numbers):

The start number called the most often in the published annotations is 66, it was called in 100 of the 173 non-draft genes in the pham.

Genes that call this "Most Annotated" start:

• Adora_32, Angelique_35, Annalisa_32, Archis_36, Arri_41, Azula_35, BBQValindra_32, BackstagePass_36, BatStarr_31, Beenie_28, Begonia_36, Blino_37, Bosnia_31, BritBrat_31, Bunnybear_27, CaptainKirk2_34, CarolAnn_37, Cashline_35, Clap_34, Clark_33, Clown_42, Confidence_30, Crater_39, Cynthia_34, Delian_35, Denise_27, DobbysSock_28, Dorito_30, DumpsterDude_34, Ecliptus_38, EnalisNailo_32, Eviarto_31, Eyes_32, Fairfaxidum_37, Fenry_33, Fireball_38, Floral_33, Frickyeah_37, Frokostdame_35, Fugax_41, GemG_34, Gizermo_34, Guacamole_34, Haley23_34, HannahD_34, Hitter_34, JCole_27, Jablanski_35,

Jalammah_36, Jambalaya_37, JasperJr_34, JuJu_36, Kenna_36, Kiko_35, Kuwabara_36, LonelyBoi_32, Lton_27, Lutum_37, Lysidious_35, Malachai_36, Malibo_36, Matteo_28, Mcklovin_32, MichaelScott_33, MintFen_33, MissRona_35, Mocha12_34, Moosehead_29, MortyNRick_34, Nymphadora_31, Obliviate_32, Opie_35, Oregano_34, PCoral7_34, Phlop_37, PhorbesPhlower_29, PhriskyACE_33, PhrostedPhlake_36, Pickett_28, Pollux_34, Portcullis_38, Powerball_35, PrincePatrick_33, PullumCavea_37, Pytheas_35, Sahara_33, Samman98_32, Savbucketdawg_37, Sekhmet_35, Squiddly_38, Suerte_31, TaronosaurusRx_33, Thimann_32, TimTam_31, TinyDot_30, Toast_34, Togo_37, TuertoX_34, UmaThurman_31, VanDeWege_41, Vasanti_34, WelcomeAyanna_35, Whiteclaw_34, William_35, Wisp_30, Wocket_36, Zarbodnamra_33, ZiggyZoo_34,

Genes that have the "Most Annotated" start but do not call it:

- Agueybana_33, Apricot_36, Asapag_37, BENtherdunthat_36, Barb_40, Barco_35, BearBQ_36, Birdsong_37, Blueberry_35, Bowser_35, Bradissa_32, Budski_37, Bunker_31, CheeseTouch_35, ClamChowder_40, CoveyB_41, Danyall_40, DirtyBoi_35, EMSquaredA_32, Easley_33, Ebert_35, Evamon_37, Eyre_28, GEazy_36, Gambino_36, Getalong_38, Gezellig_38, Halo3_38, Hedwig_37, Herod_31, Holliday_36, Horus_37, Hugley_30, Kamaru_36, KappaFarmDelta_37, KimmyK_39, Leroy_37, Lilas_35, LitninMcQueen_35, Lucky10_31, Malisha_37, Marteena_32, Morkie_30, Nubi_38, ODay_40, Ohgeesy_34, OneDirection_28, Pepperoni_29, Periwinkle_40, Petra_35, Phabuloso_34, Phistory_37, PinkCoffee_40, RayTheFireFly_35, RogerDodger_41, Ruthy_34, Salvador_37, Samba_36, Savage_34, Shinji_38, SmokingBunny_37, Spooky_36, Sproutie_34, ThankyouJordi_35, TillyBobJoe_37, Twister6_40, Valary_40, Walrus_36, Whitney_40, Wizard_37, YungMoney_39, ZAYM_35,

Genes that do not have the "Most Annotated" start:

- AlumE_36, BoyNamedSue_36, Doggs_32, Hortense_32, Howe_32, Shlim410_32, Twinkle_32,

Summary by start number:

Start 46:

- Found in 3 of 187 (1.6%) of genes in pham
- Manual Annotations of this start: 1 of 173
- Called 33.3% of time when present
- Phage (with cluster) where this start called: Lucky10_31 (DH),

Start 49:

- Found in 57 of 187 (30.5%) of genes in pham
- Manual Annotations of this start: 4 of 173
- Called 7.0% of time when present
- Phage (with cluster) where this start called: Bunker_31 (DB), EMSquaredA_32 (CY1), GEazy_36 (DB), Marteena_32 (CY1),

Start 51:

- Found in 2 of 187 (1.1%) of genes in pham
- Manual Annotations of this start: 1 of 173
- Called 50.0% of time when present
- Phage (with cluster) where this start called: Ruthy_34 (DW),

Start 52:

- Found in 1 of 187 (0.5%) of genes in pham
- Manual Annotations of this start: 1 of 173
- Called 100.0% of time when present
- Phage (with cluster) where this start called: Agueybana_33 (CZ1),

Start 62:

- Found in 11 of 187 (5.9%) of genes in pham
- Manual Annotations of this start: 3 of 173
- Called 27.3% of time when present
- Phage (with cluster) where this start called: Ebert_35 (CZ2), Savage_34 (CZ2), Sproutie_34 (CZ2),

Start 63:

- Found in 60 of 187 (32.1%) of genes in pham
- Manual Annotations of this start: 31 of 173
- Called 56.7% of time when present
- Phage (with cluster) where this start called: Apricot_36 (DN3), Asapag_37 (DN1), Barb_40 (DC1), CheeseTouch_35 (DN1), ClamChowder_40 (DC1), CoveyB_41 (DC1), Danyall_40 (DC1), DirtyBoi_35 (DB), Doggs_32 (DB), Evamon_37 (DC1), Gezellig_38 (DC1), Halo3_38 (DC1), Hedwig_37 (DB), Holliday_36 (DN1), Horus_37 (DN1), Kamaru_36 (DN1), KimmyK_39 (DC1), Leroy_37 (DN1), LitninMcQueen_35 (DN1), Nubi_38 (DC1), Periwinkle_40 (DN1), Phistory_37 (DN1), PinkCoffee_40 (DC1), RogerDodger_41 (DC1), Salvador_37 (DC1), Samba_36 (CV), Shinji_38 (DC1), SmokingBunny_37 (DC1), Spooky_36 (DN2), TillyBobJoe_37 (DC1), Twister6_40 (DC1), Valary_40 (DC1), Walrus_36 (CV), Wizard_37 (DC1),

Start 64:

- Found in 10 of 187 (5.3%) of genes in pham
- Manual Annotations of this start: 1 of 173
- Called 20.0% of time when present
- Phage (with cluster) where this start called: Herod_31 (CZ1), Hugley_30 (CZ1),

Start 65:

- Found in 7 of 187 (3.7%) of genes in pham
- Manual Annotations of this start: 1 of 173
- Called 14.3% of time when present
- Phage (with cluster) where this start called: Petra_35 (CV),

Start 66:

- Found in 180 of 187 (96.3%) of genes in pham
- Manual Annotations of this start: 100 of 173
- Called 60.0% of time when present
- Phage (with cluster) where this start called: Adora_32 (CZ4), Angelique_35 (CY1), Annalisa_32 (CZ4), Archis_36 (CV), Arri_41 (DC1), Azula_35 (CV), BBQValindra_32 (DB), BackstagePass_36 (DB), BatStarr_31 (CZ1), Beenie_28 (CZ4), Begonia_36 (CV), Blino_37 (CV), Bosnia_31 (CZ1), BritBrat_31 (CY2), Bunnybear_27 (CZ), CaptainKirk2_34 (CV), CarolAnn_37 (CV), Cashline_35 (CY), Clap_34 (CZ2), Clark_33 (CZ4), Clown_42 (DC2), Confidence_30 (CY1), Crater_39 (DN3), Cynthia_34 (CZ2), Delian_35 (CV), Denise_27 (CZ5), DobbysSock_28 (CZ4), Dorito_30 (CZ4), DumpsterDude_34 (DW), Ecliptus_38 (DN), EnalisNailo_32 (CY1), Eviarto_31 (CZ1), Eyes_32 (DB), Fairfaxidum_37 (CV), Fenry_33 (CV), Fireball_38 (DC1), Floral_33 (CY1), Frickyeah_37 (DN1), Frokostdame_35 (CV), Fugax_41 (DC1), GemG_34 (CZ2), Gizermo_34 (CZ2), Guacamole_34 (CV), Haley23_34

(CZ2), HannahD_34 (DB), Hitter_34 (CV), JCole_27 (CZ2), Jablanski_35 (CY), Jalamah_36 (CV), Jambalaya_37 (DC1), JasperJr_34 (CV), JuJu_36 (CV), Kenna_36 (DN1), Kiko_35 (DB), Kuwabara_36 (DN4), LonelyBoi_32 (CY), Lton_27 (CZ), Lutum_37 (DN1), Lysidious_35 (CV), Malachai_36 (CV), Malibo_36 (DW), Matteo_28 (CZ2), Mcklovin_32 (CZ4), MichaelScott_33 (CZ4), MintFen_33 (CV), MissRona_35 (CV), Mocha12_34 (CZ2), Moosehead_29 (CZ6), MortyNRick_34 (DN), Nymphadora_31 (CZ1), Obliviate_32 (CV), Opie_35 (DB), Oregano_34 (CZ4), PCoral7_34 (CV), Phlop_37 (DC1), PhorbesPhlower_29 (DH), PhriskyACE_33 (CZ4), PhrostedPhlake_36 (CV), Pickett_28 (CZ2), Pollux_34 (CY1), Portcullis_38 (DC1), Powerball_35 (CZ4), PrincePatrick_33 (CV), PullumCavea_37 (DC1), Pytheas_35 (CY), Sahara_33 (CZ2), Samman98_32 (CZ4), Savbucketdawg_37 (DC1), Sekhmet_35 (CZ4), Squiddly_38 (DN2), Suerte_31 (CZ4), TaronosaurusRx_33 (DB), Thimann_32 (CZ4), TimTam_31 (CZ1), TinyDot_30 (singleton), Toast_34 (CV), Togo_37 (DC1), TuertoX_34 (CZ2), UmaThurman_31 (CV), VanDeWege_41 (DC1), Vasanti_34 (CZ2), WelcomeAyanna_35 (CZ1), Whiteclaw_34 (CZ2), William_35 (CV), Wisp_30 (CV), Wocket_36 (CV), Zarbodnamra_33 (CV), ZiggyZoo_34 (CV),

Start 67:

- Found in 49 of 187 (26.2%) of genes in pham
- Manual Annotations of this start: 18 of 173
- Called 38.8% of time when present
- Phage (with cluster) where this start called: BENtherdunthat_36 (DN1), Barco_35 (CV), BearBQ_36 (DN), Birdsong_37 (DN), Bowser_35 (DB), Budski_37 (DN), Eyre_28 (singleton), Getalong_38 (DN1), KappaFarmDelta_37 (CV), Lilas_35 (CY1), Malisha_37 (DN), Morkie_30 (DH), ODay_40 (DN), OneDirection_28 (CZ6), Pepperoni_29 (CZ), Phabuloso_34 (DN1), RayTheFireFly_35 (DB), Whitney_40 (DN1), YungMoney_39 (DC1),

Start 68:

- Found in 143 of 187 (76.5%) of genes in pham
- Manual Annotations of this start: 6 of 173
- Called 4.9% of time when present
- Phage (with cluster) where this start called: Easley_33 (CZ4), Hortense_32 (CZ4), Howe_32 (CZ4), Ohgeesy_34 (CZ), Shlim410_32 (CZ4), Twinkle_32 (CZ4), ZAYM_35 (DB),

Start 71:

- Found in 160 of 187 (85.6%) of genes in pham
- Manual Annotations of this start: 3 of 173
- Called 1.9% of time when present
- Phage (with cluster) where this start called: Blueberry_35 (CV), Bradissa_32 (CY1), Gambino_36 (CV),

Start 73:

- Found in 73 of 187 (39.0%) of genes in pham
- Manual Annotations of this start: 3 of 173
- Called 4.1% of time when present
- Phage (with cluster) where this start called: AlumE_36 (CZ1), BoyNamedSue_36 (CZ1), ThankyouJordi_35 (CZ1),

Summary by clusters:

There are 21 clusters represented in this pham: DN, CY2, singleton, DH, DN4, CZ2, CZ6, CZ1, DB, CY1, CZ4, CZ5, CZ, CY, DN1, DN3, DN2, DW, DC2, CV, DC1,

Info for manual annotations of cluster CV:

- Start number 63 was manually annotated 2 times for cluster CV.
- Start number 65 was manually annotated 1 time for cluster CV.
- Start number 66 was manually annotated 29 times for cluster CV.
- Start number 67 was manually annotated 2 times for cluster CV.
- Start number 71 was manually annotated 2 times for cluster CV.

Info for manual annotations of cluster CY:

- Start number 66 was manually annotated 4 times for cluster CY.

Info for manual annotations of cluster CY1:

- Start number 49 was manually annotated 2 times for cluster CY1.
- Start number 66 was manually annotated 5 times for cluster CY1.
- Start number 67 was manually annotated 1 time for cluster CY1.
- Start number 71 was manually annotated 1 time for cluster CY1.

Info for manual annotations of cluster CY2:

- Start number 66 was manually annotated 1 time for cluster CY2.

Info for manual annotations of cluster CZ:

- Start number 66 was manually annotated 2 times for cluster CZ.
- Start number 68 was manually annotated 1 time for cluster CZ.

Info for manual annotations of cluster CZ1:

- Start number 52 was manually annotated 1 time for cluster CZ1.
- Start number 64 was manually annotated 1 time for cluster CZ1.
- Start number 66 was manually annotated 6 times for cluster CZ1.
- Start number 73 was manually annotated 3 times for cluster CZ1.

Info for manual annotations of cluster CZ2:

- Start number 62 was manually annotated 3 times for cluster CZ2.
- Start number 66 was manually annotated 12 times for cluster CZ2.

Info for manual annotations of cluster CZ4:

- Start number 66 was manually annotated 13 times for cluster CZ4.
- Start number 68 was manually annotated 5 times for cluster CZ4.

Info for manual annotations of cluster CZ5:

- Start number 66 was manually annotated 1 time for cluster CZ5.

Info for manual annotations of cluster CZ6:

- Start number 66 was manually annotated 1 time for cluster CZ6.
- Start number 67 was manually annotated 1 time for cluster CZ6.

Info for manual annotations of cluster DB:

- Start number 49 was manually annotated 2 times for cluster DB.
- Start number 63 was manually annotated 3 times for cluster DB.
- Start number 66 was manually annotated 5 times for cluster DB.
- Start number 67 was manually annotated 2 times for cluster DB.

Info for manual annotations of cluster DC1:

- Start number 63 was manually annotated 15 times for cluster DC1.
- Start number 66 was manually annotated 10 times for cluster DC1.
- Start number 67 was manually annotated 1 time for cluster DC1.

Info for manual annotations of cluster DC2:

- Start number 66 was manually annotated 1 time for cluster DC2.

Info for manual annotations of cluster DH:

- Start number 46 was manually annotated 1 time for cluster DH.
- Start number 66 was manually annotated 1 time for cluster DH.
- Start number 67 was manually annotated 1 time for cluster DH.

Info for manual annotations of cluster DN:

- Start number 66 was manually annotated 1 time for cluster DN.
- Start number 67 was manually annotated 5 times for cluster DN.

Info for manual annotations of cluster DN1:

- Start number 63 was manually annotated 9 times for cluster DN1.
- Start number 66 was manually annotated 2 times for cluster DN1.
- Start number 67 was manually annotated 4 times for cluster DN1.

Info for manual annotations of cluster DN2:

- Start number 63 was manually annotated 1 time for cluster DN2.
- Start number 66 was manually annotated 1 time for cluster DN2.

Info for manual annotations of cluster DN3:

- Start number 63 was manually annotated 1 time for cluster DN3.
- Start number 66 was manually annotated 1 time for cluster DN3.

Info for manual annotations of cluster DN4:

- Start number 66 was manually annotated 1 time for cluster DN4.

Info for manual annotations of cluster DW:

- Start number 51 was manually annotated 1 time for cluster DW.
- Start number 66 was manually annotated 2 times for cluster DW.

Gene Information:

Gene: Adora_32 Start: 28689, Stop: 28462, Start Num: 66

Candidate Starts for Adora_32:

(Start: 66 @28689 has 100 MA's), (Start: 68 @28674 has 6 MA's), (Start: 71 @28650 has 3 MA's), (Start: 73 @28641 has 3 MA's), (74, 28638), (75, 28617), (84, 28542), (88, 28488),

Gene: Agueybana_33 Start: 28613, Stop: 28344, Start Num: 52

Candidate Starts for Agueybana_33:

(Start: 52 @28613 has 1 MA's), (Start: 63 @28580 has 31 MA's), (Start: 66 @28571 has 100 MA's), (Start: 67 @28568 has 18 MA's), (Start: 68 @28556 has 6 MA's), (69, 28553), (Start: 71 @28532 has 3 MA's), (74, 28520), (78, 28466), (82, 28445), (83, 28439), (84, 28424), (88, 28370),

Gene: AlumE_36 Start: 30317, Stop: 30123, Start Num: 73

Candidate Starts for AlumE_36:

(15, 30515), (42, 30437), (50, 30413), (Start: 73 @30317 has 3 MA's), (77, 30260), (82, 30233), (83, 30227), (84, 30212), (86, 30167), (88, 30158),

Gene: Angelique_35 Start: 28945, Stop: 28709, Start Num: 66

Candidate Starts for Angelique_35:

(Start: 66 @28945 has 100 MA's), (Start: 73 @28897 has 3 MA's), (74, 28894), (76, 28867), (85, 28795), (86, 28753), (88, 28744),

Gene: Annalisa_32 Start: 26879, Stop: 26652, Start Num: 66

Candidate Starts for Annalisa_32:

(Start: 66 @26879 has 100 MA's), (Start: 68 @26864 has 6 MA's), (Start: 71 @26840 has 3 MA's), (Start: 73 @26831 has 3 MA's), (74, 26828), (75, 26807), (84, 26732),

Gene: Apricot_36 Start: 28503, Stop: 28267, Start Num: 63

Candidate Starts for Apricot_36:

(Start: 63 @28503 has 31 MA's), (Start: 66 @28494 has 100 MA's), (Start: 67 @28491 has 18 MA's), (Start: 68 @28479 has 6 MA's), (Start: 71 @28455 has 3 MA's), (74, 28443), (77, 28395), (79, 28380), (82, 28368), (83, 28362), (84, 28347), (86, 28302),

Gene: Archis_36 Start: 29314, Stop: 29087, Start Num: 66

Candidate Starts for Archis_36:

(Start: 49 @29359 has 4 MA's), (Start: 66 @29314 has 100 MA's), (Start: 68 @29299 has 6 MA's), (69, 29296), (Start: 71 @29275 has 3 MA's), (Start: 73 @29266 has 3 MA's), (74, 29263), (77, 29215), (84, 29167), (86, 29122), (88, 29113),

Gene: Arri_41 Start: 33726, Stop: 33499, Start Num: 66

Candidate Starts for Arri_41:

(Start: 49 @33771 has 4 MA's), (Start: 63 @33735 has 31 MA's), (Start: 66 @33726 has 100 MA's), (Start: 68 @33711 has 6 MA's), (Start: 71 @33687 has 3 MA's), (74, 33675), (77, 33627), (83, 33594), (84, 33579), (88, 33525),

Gene: Asapag_37 Start: 30095, Stop: 29859, Start Num: 63

Candidate Starts for Asapag_37:

(Start: 63 @30095 has 31 MA's), (Start: 66 @30086 has 100 MA's), (Start: 67 @30083 has 18 MA's), (Start: 68 @30071 has 6 MA's), (Start: 71 @30047 has 3 MA's), (74, 30035), (83, 29954), (84, 29939), (88, 29885),

Gene: Azula_35 Start: 29026, Stop: 28799, Start Num: 66

Candidate Starts for Azula_35:

(Start: 49 @29071 has 4 MA's), (Start: 66 @29026 has 100 MA's), (Start: 71 @28987 has 3 MA's), (Start: 73 @28978 has 3 MA's), (74, 28975), (80, 28909), (83, 28894), (85, 28876), (88, 28825),

Gene: BBQValindra_32 Start: 27582, Stop: 27346, Start Num: 66

Candidate Starts for BBQValindra_32:

(Start: 49 @27627 has 4 MA's), (Start: 66 @27582 has 100 MA's), (Start: 71 @27543 has 3 MA's), (74, 27531), (76, 27504), (85, 27432), (88, 27381),

Gene: BENtherdunthat_36 Start: 28355, Stop: 28131, Start Num: 67

Candidate Starts for BENtherdunthat_36:

(Start: 66 @28358 has 100 MA's), (Start: 67 @28355 has 18 MA's), (Start: 68 @28343 has 6 MA's), (Start: 71 @28319 has 3 MA's), (74, 28307), (77, 28259), (82, 28232), (83, 28226), (84, 28211), (86, 28166), (87, 28160), (88, 28157),

Gene: BackstagePass_36 Start: 29151, Stop: 28915, Start Num: 66

Candidate Starts for BackstagePass_36:

(Start: 49 @29196 has 4 MA's), (Start: 66 @29151 has 100 MA's), (Start: 73 @29103 has 3 MA's), (74, 29100), (76, 29073), (79, 29037), (88, 28950), (92, 28926),

Gene: Barb_40 Start: 33752, Stop: 33516, Start Num: 63

Candidate Starts for Barb_40:

(Start: 49 @33788 has 4 MA's), (Start: 63 @33752 has 31 MA's), (Start: 66 @33743 has 100 MA's), (Start: 68 @33728 has 6 MA's), (Start: 71 @33704 has 3 MA's), (74, 33692), (77, 33644), (83, 33611), (84, 33596), (88, 33542),

Gene: Barco_35 Start: 29527, Stop: 29303, Start Num: 67

Candidate Starts for Barco_35:

(Start: 46 @29575 has 1 MA's), (Start: 66 @29530 has 100 MA's), (Start: 67 @29527 has 18 MA's), (Start: 68 @29515 has 6 MA's), (69, 29512), (Start: 71 @29491 has 3 MA's), (74, 29479), (83, 29398), (84, 29383),

Gene: BatStarr_31 Start: 28844, Stop: 28608, Start Num: 66

Candidate Starts for BatStarr_31:

(Start: 64 @28850 has 1 MA's), (Start: 66 @28844 has 100 MA's), (Start: 68 @28829 has 6 MA's), (69, 28826), (Start: 71 @28805 has 3 MA's), (72, 28799), (Start: 73 @28796 has 3 MA's), (74, 28793), (84, 28697), (89, 28640),

Gene: BearBQ_36 Start: 29718, Stop: 29494, Start Num: 67

Candidate Starts for BearBQ_36:

(Start: 63 @29730 has 31 MA's), (Start: 66 @29721 has 100 MA's), (Start: 67 @29718 has 18 MA's), (Start: 68 @29706 has 6 MA's), (Start: 71 @29682 has 3 MA's), (74, 29670), (77, 29622), (79, 29607), (82, 29595), (83, 29589), (84, 29574), (86, 29529),

Gene: Beenie_28 Start: 26674, Stop: 26447, Start Num: 66

Candidate Starts for Beenie_28:

(Start: 66 @26674 has 100 MA's), (Start: 68 @26659 has 6 MA's), (Start: 73 @26626 has 3 MA's), (74, 26623), (75, 26602), (82, 26548), (84, 26527), (88, 26473),

Gene: Begonia_36 Start: 30625, Stop: 30392, Start Num: 66

Candidate Starts for Begonia_36:

(Start: 66 @30625 has 100 MA's), (69, 30607), (Start: 71 @30586 has 3 MA's), (74, 30574), (79, 30511), (83, 30493), (84, 30478), (88, 30424), (91, 30400),

Gene: Birdsong_37 Start: 29810, Stop: 29586, Start Num: 67

Candidate Starts for Birdsong_37:

(Start: 63 @29822 has 31 MA's), (Start: 66 @29813 has 100 MA's), (Start: 67 @29810 has 18 MA's), (Start: 68 @29798 has 6 MA's), (Start: 71 @29774 has 3 MA's), (74, 29762), (83, 29681), (84, 29666), (86, 29621), (88, 29612),

Gene: Blino_37 Start: 31465, Stop: 31223, Start Num: 66

Candidate Starts for Blino_37:

(34, 31546), (44, 31519), (Start: 63 @31474 has 31 MA's), (Start: 66 @31465 has 100 MA's), (Start: 73 @31417 has 3 MA's), (74, 31414), (85, 31315), (86, 31273), (88, 31264),

Gene: Blueberry_35 Start: 28987, Stop: 28799, Start Num: 71

Candidate Starts for Blueberry_35:

(Start: 49 @29071 has 4 MA's), (Start: 66 @29026 has 100 MA's), (Start: 71 @28987 has 3 MA's), (Start: 73 @28978 has 3 MA's), (74, 28975), (80, 28909), (83, 28894), (85, 28876), (88, 28825),

Gene: Bosnia_31 Start: 28844, Stop: 28608, Start Num: 66

Candidate Starts for Bosnia_31:

(Start: 64 @28850 has 1 MA's), (Start: 66 @28844 has 100 MA's), (Start: 68 @28829 has 6 MA's), (69, 28826), (Start: 71 @28805 has 3 MA's), (72, 28799), (Start: 73 @28796 has 3 MA's), (74, 28793), (84, 28697), (89, 28640),

Gene: Bowser_35 Start: 28606, Stop: 28382, Start Num: 67

Candidate Starts for Bowser_35:

(Start: 66 @28609 has 100 MA's), (Start: 67 @28606 has 18 MA's), (Start: 68 @28594 has 6 MA's), (Start: 71 @28570 has 3 MA's), (74, 28558), (83, 28477), (84, 28462), (88, 28408),

Gene: BoyNamedSue_36 Start: 30317, Stop: 30123, Start Num: 73

Candidate Starts for BoyNamedSue_36:

(15, 30515), (42, 30437), (50, 30413), (Start: 73 @30317 has 3 MA's), (77, 30260), (82, 30233), (83, 30227), (84, 30212), (86, 30167), (88, 30158),

Gene: Bradissa_32 Start: 28422, Stop: 28231, Start Num: 71

Candidate Starts for Bradissa_32:

(Start: 66 @28461 has 100 MA's), (Start: 67 @28458 has 18 MA's), (Start: 68 @28446 has 6 MA's), (Start: 71 @28422 has 3 MA's), (74, 28410), (83, 28329), (84, 28314), (86, 28269), (88, 28260),

Gene: BritBrat_31 Start: 29502, Stop: 29275, Start Num: 66

Candidate Starts for BritBrat_31:

(Start: 66 @29502 has 100 MA's), (Start: 67 @29499 has 18 MA's), (Start: 68 @29487 has 6 MA's), (Start: 71 @29463 has 3 MA's), (72, 29457), (Start: 73 @29454 has 3 MA's), (74, 29451), (82, 29376), (83, 29370), (84, 29355), (86, 29310), (88, 29301),

Gene: Budski_37 Start: 30045, Stop: 29821, Start Num: 67

Candidate Starts for Budski_37:

(Start: 63 @30057 has 31 MA's), (Start: 66 @30048 has 100 MA's), (Start: 67 @30045 has 18 MA's), (Start: 68 @30033 has 6 MA's), (Start: 71 @30009 has 3 MA's), (74, 29997), (77, 29949), (82, 29922), (83, 29916), (84, 29901), (86, 29856), (88, 29847), (89, 29844),

Gene: Bunker_31 Start: 27927, Stop: 27655, Start Num: 49

Candidate Starts for Bunker_31:

(Start: 49 @27927 has 4 MA's), (Start: 66 @27882 has 100 MA's), (Start: 73 @27834 has 3 MA's), (74, 27831), (76, 27804), (83, 27750), (85, 27732), (88, 27681),

Gene: Bunnybear_27 Start: 27053, Stop: 26823, Start Num: 66

Candidate Starts for Bunnybear_27:

(Start: 66 @27053 has 100 MA's), (Start: 68 @27038 has 6 MA's), (Start: 71 @27014 has 3 MA's), (72, 27008), (Start: 73 @27005 has 3 MA's), (74, 27002), (82, 26927), (83, 26921), (84, 26906), (88, 26852),

Gene: CaptainKirk2_34 Start: 28619, Stop: 28392, Start Num: 66

Candidate Starts for CaptainKirk2_34:

(Start: 49 @28664 has 4 MA's), (Start: 66 @28619 has 100 MA's), (Start: 68 @28604 has 6 MA's), (Start: 71 @28580 has 3 MA's), (74, 28568), (77, 28520), (83, 28487), (84, 28472), (86, 28427), (88, 28418), (89, 28415),

Gene: CarolAnn_37 Start: 31464, Stop: 31222, Start Num: 66

Candidate Starts for CarolAnn_37:

(34, 31545), (44, 31518), (Start: 63 @31473 has 31 MA's), (Start: 66 @31464 has 100 MA's), (Start: 73 @31416 has 3 MA's), (74, 31413), (85, 31314), (86, 31272), (88, 31263),

Gene: Cashline_35 Start: 29499, Stop: 29272, Start Num: 66

Candidate Starts for Cashline_35:

(Start: 46 @29544 has 1 MA's), (Start: 66 @29499 has 100 MA's), (Start: 68 @29484 has 6 MA's), (69, 29481), (Start: 71 @29460 has 3 MA's), (72, 29454), (Start: 73 @29451 has 3 MA's), (74, 29448), (84, 29352), (88, 29298),

Gene: CheeseTouch_35 Start: 26657, Stop: 26421, Start Num: 63

Candidate Starts for CheeseTouch_35:

(Start: 63 @26657 has 31 MA's), (Start: 66 @26648 has 100 MA's), (Start: 67 @26645 has 18 MA's), (Start: 68 @26633 has 6 MA's), (Start: 71 @26609 has 3 MA's), (74, 26597), (77, 26549), (83, 26516), (84, 26501),

Gene: ClamChowder_40 Start: 33752, Stop: 33516, Start Num: 63

Candidate Starts for ClamChowder_40:

(Start: 49 @33788 has 4 MA's), (Start: 63 @33752 has 31 MA's), (Start: 66 @33743 has 100 MA's), (Start: 68 @33728 has 6 MA's), (Start: 71 @33704 has 3 MA's), (74, 33692), (77, 33644), (83, 33611), (84, 33596), (88, 33542),

Gene: Clap_34 Start: 26548, Stop: 26321, Start Num: 66

Candidate Starts for Clap_34:

(Start: 62 @26557 has 3 MA's), (Start: 66 @26548 has 100 MA's), (69, 26530), (Start: 71 @26509 has 3 MA's), (74, 26497), (83, 26416), (84, 26401), (86, 26356), (87, 26350), (88, 26347),

Gene: Clark_33 Start: 26491, Stop: 26264, Start Num: 66

Candidate Starts for Clark_33:

(Start: 66 @26491 has 100 MA's), (Start: 68 @26476 has 6 MA's), (Start: 73 @26443 has 3 MA's), (74, 26440), (75, 26419), (82, 26365), (84, 26344), (88, 26290),

Gene: Clown_42 Start: 35272, Stop: 35024, Start Num: 66

Candidate Starts for Clown_42:

(8, 35458), (Start: 66 @35272 has 100 MA's), (Start: 68 @35257 has 6 MA's), (Start: 71 @35233 has 3 MA's), (Start: 73 @35224 has 3 MA's), (74, 35221), (75, 35200), (84, 35125), (88, 35071),

Gene: Confidence_30 Start: 26910, Stop: 26683, Start Num: 66

Candidate Starts for Confidence_30:

(55, 26937), (Start: 66 @26910 has 100 MA's), (Start: 67 @26907 has 18 MA's), (Start: 68 @26895 has 6 MA's), (Start: 71 @26871 has 3 MA's), (Start: 73 @26862 has 3 MA's), (74, 26859), (76, 26832), (81, 26790), (82, 26784), (83, 26778), (85, 26760), (88, 26709),

Gene: CoveyB_41 Start: 33552, Stop: 33316, Start Num: 63

Candidate Starts for CoveyB_41:

(Start: 49 @33588 has 4 MA's), (Start: 63 @33552 has 31 MA's), (Start: 66 @33543 has 100 MA's), (Start: 68 @33528 has 6 MA's), (Start: 71 @33504 has 3 MA's), (74, 33492), (83, 33411), (84, 33396), (88, 33342),

Gene: Crater_39 Start: 29158, Stop: 28931, Start Num: 66

Candidate Starts for Crater_39:

(Start: 49 @29203 has 4 MA's), (53, 29191), (Start: 66 @29158 has 100 MA's), (Start: 68 @29143 has 6 MA's), (69, 29140), (Start: 71 @29119 has 3 MA's), (74, 29107), (77, 29059), (79, 29044), (80, 29041), (82, 29032), (83, 29026), (84, 29011), (86, 28966), (88, 28957), (89, 28954),

Gene: Cynthia_34 Start: 26548, Stop: 26321, Start Num: 66

Candidate Starts for Cynthia_34:

(Start: 62 @26557 has 3 MA's), (Start: 66 @26548 has 100 MA's), (69, 26530), (Start: 71 @26509 has 3 MA's), (74, 26497), (83, 26416), (84, 26401), (86, 26356), (87, 26350), (88, 26347),

Gene: Danyall_40 Start: 33554, Stop: 33318, Start Num: 63

Candidate Starts for Danyall_40:

(Start: 49 @33590 has 4 MA's), (Start: 63 @33554 has 31 MA's), (Start: 66 @33545 has 100 MA's), (Start: 68 @33530 has 6 MA's), (Start: 71 @33506 has 3 MA's), (74, 33494), (83, 33413), (84, 33398), (88, 33344),

Gene: Delian_35 Start: 28617, Stop: 28390, Start Num: 66

Candidate Starts for Delian_35:

(Start: 49 @28662 has 4 MA's), (Start: 66 @28617 has 100 MA's), (Start: 68 @28602 has 6 MA's), (Start: 71 @28578 has 3 MA's), (74, 28566), (77, 28518), (83, 28485), (84, 28470), (86, 28425), (88, 28416), (89, 28413),

Gene: Denise_27 Start: 24591, Stop: 24364, Start Num: 66

Candidate Starts for Denise_27:

(Start: 66 @24591 has 100 MA's), (Start: 67 @24588 has 18 MA's), (Start: 68 @24576 has 6 MA's), (Start: 71 @24552 has 3 MA's), (72, 24546), (Start: 73 @24543 has 3 MA's), (74, 24540), (80, 24474), (84, 24444), (86, 24399), (88, 24390),

Gene: DirtyBoi_35 Start: 29162, Stop: 28926, Start Num: 63

Candidate Starts for DirtyBoi_35:

(Start: 63 @29162 has 31 MA's), (Start: 66 @29153 has 100 MA's), (Start: 68 @29138 has 6 MA's), (Start: 71 @29114 has 3 MA's), (74, 29102), (83, 29021), (84, 29006),

Gene: DobbysSock_28 Start: 25413, Stop: 25186, Start Num: 66

Candidate Starts for DobbysSock_28:

(Start: 66 @25413 has 100 MA's), (Start: 68 @25398 has 6 MA's), (Start: 73 @25365 has 3 MA's), (74, 25362), (75, 25341), (82, 25287), (84, 25266), (88, 25212),

Gene: Doggs_32 Start: 28809, Stop: 28585, Start Num: 63

Candidate Starts for Doggs_32:

(61, 28812), (Start: 63 @28809 has 31 MA's), (Start: 73 @28764 has 3 MA's), (74, 28761), (84, 28665), (85, 28662), (86, 28620), (88, 28611),

Gene: Dorito_30 Start: 25057, Stop: 24830, Start Num: 66

Candidate Starts for Dorito_30:

(Start: 66 @25057 has 100 MA's), (Start: 68 @25042 has 6 MA's), (Start: 73 @25009 has 3 MA's), (74, 25006), (75, 24985), (82, 24931), (84, 24910), (88, 24856),

Gene: DumpsterDude_34 Start: 31000, Stop: 30773, Start Num: 66

Candidate Starts for DumpsterDude_34:

(Start: 51 @31036 has 1 MA's), (Start: 65 @31003 has 1 MA's), (Start: 66 @31000 has 100 MA's), (Start: 73 @30952 has 3 MA's), (74, 30949), (83, 30868), (84, 30853), (86, 30808), (88, 30799),

Gene: EMSquaredA_32 Start: 27060, Stop: 26788, Start Num: 49

Candidate Starts for EMSquaredA_32:

(Start: 49 @27060 has 4 MA's), (Start: 66 @27015 has 100 MA's), (Start: 73 @26967 has 3 MA's), (74, 26964), (76, 26937), (84, 26868),

Gene: Easley_33 Start: 26425, Stop: 26213, Start Num: 68

Candidate Starts for Easley_33:

(Start: 66 @26440 has 100 MA's), (Start: 68 @26425 has 6 MA's), (Start: 71 @26401 has 3 MA's), (Start: 73 @26392 has 3 MA's), (74, 26389), (75, 26368), (84, 26293), (88, 26239),

Gene: Ebert_35 Start: 26481, Stop: 26245, Start Num: 62

Candidate Starts for Ebert_35:

(Start: 62 @26481 has 3 MA's), (Start: 66 @26472 has 100 MA's), (69, 26454), (Start: 71 @26433 has 3 MA's), (74, 26421), (83, 26340), (84, 26325), (86, 26280), (87, 26274), (88, 26271),

Gene: Ecliptus_38 Start: 30614, Stop: 30387, Start Num: 66

Candidate Starts for Ecliptus_38:

(Start: 49 @30659 has 4 MA's), (Start: 66 @30614 has 100 MA's), (Start: 68 @30599 has 6 MA's), (69, 30596), (Start: 71 @30575 has 3 MA's), (74, 30563), (83, 30482), (84, 30467), (86, 30422), (88, 30413),

Gene: EnalisNailo_32 Start: 27995, Stop: 27765, Start Num: 66

Candidate Starts for EnalisNailo_32:

(Start: 66 @27995 has 100 MA's), (Start: 67 @27992 has 18 MA's), (Start: 68 @27980 has 6 MA's), (Start: 71 @27956 has 3 MA's), (74, 27944), (83, 27863), (84, 27848), (86, 27803), (88, 27794),

Gene: Evamon_37 Start: 33573, Stop: 33337, Start Num: 63

Candidate Starts for Evamon_37:

(Start: 49 @33609 has 4 MA's), (Start: 63 @33573 has 31 MA's), (Start: 66 @33564 has 100 MA's), (Start: 68 @33549 has 6 MA's), (Start: 71 @33525 has 3 MA's), (74, 33513), (83, 33432), (84, 33417), (88, 33363),

Gene: Eviarto_31 Start: 28820, Stop: 28584, Start Num: 66

Candidate Starts for Eviarto_31:

(Start: 64 @28826 has 1 MA's), (Start: 66 @28820 has 100 MA's), (Start: 68 @28805 has 6 MA's), (69, 28802), (Start: 71 @28781 has 3 MA's), (72, 28775), (Start: 73 @28772 has 3 MA's), (74, 28769), (84, 28673),

Gene: Eyes_32 Start: 27913, Stop: 27686, Start Num: 66

Candidate Starts for Eyes_32:

(48, 27958), (Start: 66 @27913 has 100 MA's), (Start: 68 @27898 has 6 MA's), (74, 27862), (79, 27799), (82, 27787), (84, 27766), (86, 27721), (88, 27712),

Gene: Eyre_28 Start: 24310, Stop: 24032, Start Num: 67

Candidate Starts for Eyre_28:

(17, 24448), (54, 24346), (Start: 66 @24313 has 100 MA's), (Start: 67 @24310 has 18 MA's), (Start: 68 @24298 has 6 MA's), (Start: 71 @24274 has 3 MA's), (Start: 73 @24265 has 3 MA's), (74, 24262), (79, 24199), (82, 24187), (84, 24166), (90, 24088),

Gene: Fairfaxidum_37 Start: 30093, Stop: 29866, Start Num: 66

Candidate Starts for Fairfaxidum_37:

(Start: 66 @30093 has 100 MA's), (Start: 71 @30054 has 3 MA's), (Start: 73 @30045 has 3 MA's), (74, 30042), (75, 30021), (84, 29946),

Gene: Fenry_33 Start: 28854, Stop: 28627, Start Num: 66

Candidate Starts for Fenry_33:

(Start: 49 @28899 has 4 MA's), (Start: 66 @28854 has 100 MA's), (Start: 68 @28839 has 6 MA's),
(Start: 71 @28815 has 3 MA's), (74, 28803), (83, 28722), (84, 28707), (88, 28653),

Gene: Fireball_38 Start: 33687, Stop: 33460, Start Num: 66

Candidate Starts for Fireball_38:

(Start: 49 @33732 has 4 MA's), (Start: 63 @33696 has 31 MA's), (Start: 66 @33687 has 100 MA's),
(Start: 68 @33672 has 6 MA's), (Start: 71 @33648 has 3 MA's), (74, 33636), (83, 33555), (84, 33540),
(88, 33486),

Gene: Floral_33 Start: 29088, Stop: 28861, Start Num: 66

Candidate Starts for Floral_33:

(Start: 49 @29133 has 4 MA's), (Start: 66 @29088 has 100 MA's), (Start: 73 @29040 has 3 MA's),
(74, 29037), (76, 29010), (84, 28941),

Gene: Frickyeah_37 Start: 28187, Stop: 27960, Start Num: 66

Candidate Starts for Frickyeah_37:

(Start: 63 @28196 has 31 MA's), (Start: 66 @28187 has 100 MA's), (Start: 67 @28184 has 18 MA's),
(Start: 68 @28172 has 6 MA's), (Start: 71 @28148 has 3 MA's), (74, 28136), (83, 28055), (84, 28040),
(88, 27986),

Gene: Frokostdame_35 Start: 28824, Stop: 28597, Start Num: 66

Candidate Starts for Frokostdame_35:

(Start: 49 @28869 has 4 MA's), (Start: 66 @28824 has 100 MA's), (Start: 68 @28809 has 6 MA's),
(Start: 71 @28785 has 3 MA's), (Start: 73 @28776 has 3 MA's), (74, 28773), (83, 28692), (84, 28677),

Gene: Fugax_41 Start: 33735, Stop: 33508, Start Num: 66

Candidate Starts for Fugax_41:

(Start: 49 @33780 has 4 MA's), (Start: 63 @33744 has 31 MA's), (Start: 66 @33735 has 100 MA's),
(Start: 68 @33720 has 6 MA's), (Start: 71 @33696 has 3 MA's), (74, 33684), (77, 33636), (83, 33603),
(84, 33588), (88, 33534),

Gene: GEazy_36 Start: 28931, Stop: 28659, Start Num: 49

Candidate Starts for GEazy_36:

(Start: 49 @28931 has 4 MA's), (Start: 66 @28886 has 100 MA's), (74, 28835), (85, 28736), (88,
28685),

Gene: Gambino_36 Start: 28987, Stop: 28799, Start Num: 71

Candidate Starts for Gambino_36:

(Start: 49 @29071 has 4 MA's), (Start: 66 @29026 has 100 MA's), (Start: 71 @28987 has 3 MA's),
(Start: 73 @28978 has 3 MA's), (74, 28975), (80, 28909), (83, 28894), (85, 28876), (88, 28825),

Gene: GemG_34 Start: 26548, Stop: 26321, Start Num: 66

Candidate Starts for GemG_34:

(Start: 62 @26557 has 3 MA's), (Start: 66 @26548 has 100 MA's), (69, 26530), (Start: 71 @26509 has
3 MA's), (74, 26497), (83, 26416), (84, 26401), (86, 26356), (87, 26350), (88, 26347),

Gene: Getalong_38 Start: 30905, Stop: 30681, Start Num: 67

Candidate Starts for Getalong_38:

(Start: 66 @30908 has 100 MA's), (Start: 67 @30905 has 18 MA's), (Start: 68 @30893 has 6 MA's),
(69, 30890), (74, 30857), (77, 30809), (82, 30782), (83, 30776), (84, 30761), (88, 30707),

Gene: Gezellig_38 Start: 33705, Stop: 33469, Start Num: 63

Candidate Starts for Gezellig_38:

(Start: 49 @33741 has 4 MA's), (Start: 63 @33705 has 31 MA's), (Start: 66 @33696 has 100 MA's), (Start: 68 @33681 has 6 MA's), (Start: 71 @33657 has 3 MA's), (74, 33645), (83, 33564), (84, 33549), (88, 33495),

Gene: Gizermo_34 Start: 26548, Stop: 26321, Start Num: 66

Candidate Starts for Gizermo_34:

(Start: 62 @26557 has 3 MA's), (Start: 66 @26548 has 100 MA's), (69, 26530), (Start: 71 @26509 has 3 MA's), (74, 26497), (83, 26416), (84, 26401), (86, 26356), (87, 26350), (88, 26347),

Gene: Guacamole_34 Start: 29704, Stop: 29477, Start Num: 66

Candidate Starts for Guacamole_34:

(Start: 66 @29704 has 100 MA's), (Start: 68 @29689 has 6 MA's), (Start: 71 @29665 has 3 MA's), (74, 29653), (77, 29605), (84, 29557), (88, 29503),

Gene: Haley23_34 Start: 26548, Stop: 26321, Start Num: 66

Candidate Starts for Haley23_34:

(Start: 62 @26557 has 3 MA's), (Start: 66 @26548 has 100 MA's), (69, 26530), (Start: 71 @26509 has 3 MA's), (74, 26497), (83, 26416), (84, 26401), (86, 26356), (87, 26350), (88, 26347),

Gene: Halo3_38 Start: 33998, Stop: 33762, Start Num: 63

Candidate Starts for Halo3_38:

(Start: 49 @34034 has 4 MA's), (Start: 63 @33998 has 31 MA's), (Start: 66 @33989 has 100 MA's), (Start: 68 @33974 has 6 MA's), (Start: 71 @33950 has 3 MA's), (74, 33938), (83, 33857), (84, 33842), (88, 33788),

Gene: HannahD_34 Start: 28251, Stop: 28024, Start Num: 66

Candidate Starts for HannahD_34:

(Start: 49 @28296 has 4 MA's), (Start: 66 @28251 has 100 MA's), (74, 28200), (85, 28101), (88, 28050),

Gene: Hedwig_37 Start: 29585, Stop: 29349, Start Num: 63

Candidate Starts for Hedwig_37:

(Start: 63 @29585 has 31 MA's), (Start: 66 @29576 has 100 MA's), (Start: 68 @29561 has 6 MA's), (Start: 71 @29537 has 3 MA's), (74, 29525), (83, 29444), (84, 29429),

Gene: Herod_31 Start: 28850, Stop: 28608, Start Num: 64

Candidate Starts for Herod_31:

(Start: 64 @28850 has 1 MA's), (Start: 66 @28844 has 100 MA's), (Start: 68 @28829 has 6 MA's), (69, 28826), (Start: 71 @28805 has 3 MA's), (72, 28799), (Start: 73 @28796 has 3 MA's), (74, 28793), (84, 28697), (89, 28640),

Gene: Hitter_34 Start: 28938, Stop: 28711, Start Num: 66

Candidate Starts for Hitter_34:

(Start: 49 @28983 has 4 MA's), (Start: 66 @28938 has 100 MA's), (Start: 68 @28923 has 6 MA's), (69, 28920), (Start: 71 @28899 has 3 MA's), (Start: 73 @28890 has 3 MA's), (74, 28887), (77, 28839), (84, 28791), (86, 28746), (88, 28737),

Gene: Holliday_36 Start: 28771, Stop: 28535, Start Num: 63

Candidate Starts for Holliday_36:

(Start: 63 @28771 has 31 MA's), (Start: 66 @28762 has 100 MA's), (Start: 67 @28759 has 18 MA's), (Start: 68 @28747 has 6 MA's), (Start: 71 @28723 has 3 MA's), (74, 28711), (82, 28636), (83, 28630),

(84, 28615), (86, 28570), (88, 28561),

Gene: Hortense_32 Start: 28665, Stop: 28453, Start Num: 68

Candidate Starts for Hortense_32:

(Start: 68 @28665 has 6 MA's), (Start: 71 @28641 has 3 MA's), (Start: 73 @28632 has 3 MA's), (74, 28629), (75, 28608), (84, 28533), (86, 28488), (88, 28479),

Gene: Horus_37 Start: 30117, Stop: 29881, Start Num: 63

Candidate Starts for Horus_37:

(Start: 63 @30117 has 31 MA's), (Start: 66 @30108 has 100 MA's), (Start: 67 @30105 has 18 MA's), (Start: 68 @30093 has 6 MA's), (Start: 71 @30069 has 3 MA's), (74, 30057), (83, 29976), (84, 29961), (88, 29907),

Gene: Howe_32 Start: 28665, Stop: 28453, Start Num: 68

Candidate Starts for Howe_32:

(Start: 68 @28665 has 6 MA's), (Start: 71 @28641 has 3 MA's), (Start: 73 @28632 has 3 MA's), (74, 28629), (75, 28608), (84, 28533), (86, 28488), (88, 28479),

Gene: Hugley_30 Start: 28849, Stop: 28607, Start Num: 64

Candidate Starts for Hugley_30:

(Start: 64 @28849 has 1 MA's), (Start: 66 @28843 has 100 MA's), (Start: 68 @28828 has 6 MA's), (69, 28825), (Start: 71 @28804 has 3 MA's), (72, 28798), (Start: 73 @28795 has 3 MA's), (74, 28792), (84, 28696), (89, 28639),

Gene: JCole_27 Start: 23464, Stop: 23237, Start Num: 66

Candidate Starts for JCole_27:

(Start: 66 @23464 has 100 MA's), (Start: 68 @23449 has 6 MA's), (Start: 71 @23425 has 3 MA's), (74, 23413), (83, 23332), (84, 23317), (86, 23272), (88, 23263),

Gene: Jablanski_35 Start: 30024, Stop: 29797, Start Num: 66

Candidate Starts for Jablanski_35:

(Start: 66 @30024 has 100 MA's), (Start: 68 @30009 has 6 MA's), (Start: 71 @29985 has 3 MA's), (72, 29979), (Start: 73 @29976 has 3 MA's), (74, 29973), (83, 29892), (84, 29877), (86, 29832), (88, 29823),

Gene: Jalammah_36 Start: 30107, Stop: 29880, Start Num: 66

Candidate Starts for Jalammah_36:

(29, 30212), (42, 30176), (Start: 66 @30107 has 100 MA's), (Start: 67 @30104 has 18 MA's), (Start: 68 @30092 has 6 MA's), (69, 30089), (Start: 71 @30068 has 3 MA's), (74, 30056), (77, 30008), (84, 29960), (88, 29906),

Gene: Jambalaya_37 Start: 33343, Stop: 33116, Start Num: 66

Candidate Starts for Jambalaya_37:

(Start: 49 @33388 has 4 MA's), (Start: 63 @33352 has 31 MA's), (Start: 66 @33343 has 100 MA's), (Start: 68 @33328 has 6 MA's), (Start: 71 @33304 has 3 MA's), (74, 33292), (83, 33211), (84, 33196), (88, 33142),

Gene: JasperJr_34 Start: 29704, Stop: 29477, Start Num: 66

Candidate Starts for JasperJr_34:

(Start: 66 @29704 has 100 MA's), (Start: 68 @29689 has 6 MA's), (Start: 71 @29665 has 3 MA's), (74, 29653), (77, 29605), (84, 29557), (88, 29503),

Gene: JuJu_36 Start: 29305, Stop: 29078, Start Num: 66

Candidate Starts for JuJu_36:

(Start: 49 @29350 has 4 MA's), (Start: 66 @29305 has 100 MA's), (Start: 68 @29290 has 6 MA's), (Start: 71 @29266 has 3 MA's), (72, 29260), (Start: 73 @29257 has 3 MA's), (74, 29254), (83, 29173), (84, 29158),

Gene: Kamaru_36 Start: 28771, Stop: 28535, Start Num: 63

Candidate Starts for Kamaru_36:

(Start: 63 @28771 has 31 MA's), (Start: 64 @28768 has 1 MA's), (Start: 66 @28762 has 100 MA's), (Start: 68 @28747 has 6 MA's), (69, 28744), (Start: 71 @28723 has 3 MA's), (74, 28711), (77, 28663), (82, 28636), (83, 28630), (84, 28615), (86, 28570), (88, 28561),

Gene: KappaFarmDelta_37 Start: 28565, Stop: 28341, Start Num: 67

Candidate Starts for KappaFarmDelta_37:

(10, 28748), (13, 28730), (21, 28688), (Start: 65 @28571 has 1 MA's), (Start: 66 @28568 has 100 MA's), (Start: 67 @28565 has 18 MA's), (Start: 68 @28553 has 6 MA's), (69, 28550), (Start: 71 @28529 has 3 MA's), (Start: 73 @28520 has 3 MA's), (74, 28517), (81, 28448), (82, 28442), (85, 28418), (86, 28376), (88, 28367),

Gene: Kenna_36 Start: 29098, Stop: 28871, Start Num: 66

Candidate Starts for Kenna_36:

(Start: 63 @29107 has 31 MA's), (Start: 66 @29098 has 100 MA's), (Start: 67 @29095 has 18 MA's), (Start: 68 @29083 has 6 MA's), (Start: 71 @29059 has 3 MA's), (74, 29047), (77, 28999), (79, 28984), (82, 28972), (83, 28966), (84, 28951), (86, 28906),

Gene: Kiko_35 Start: 27318, Stop: 27091, Start Num: 66

Candidate Starts for Kiko_35:

(Start: 66 @27318 has 100 MA's), (Start: 68 @27303 has 6 MA's), (Start: 71 @27279 has 3 MA's), (Start: 73 @27270 has 3 MA's), (74, 27267), (75, 27246), (77, 27219), (81, 27198), (84, 27171), (88, 27117),

Gene: KimmyK_39 Start: 34287, Stop: 34051, Start Num: 63

Candidate Starts for KimmyK_39:

(Start: 49 @34323 has 4 MA's), (Start: 63 @34287 has 31 MA's), (Start: 66 @34278 has 100 MA's), (Start: 68 @34263 has 6 MA's), (Start: 71 @34239 has 3 MA's), (74, 34227), (83, 34146), (84, 34131), (88, 34077),

Gene: Kuwabara_36 Start: 29465, Stop: 29238, Start Num: 66

Candidate Starts for Kuwabara_36:

(Start: 66 @29465 has 100 MA's), (Start: 67 @29462 has 18 MA's), (Start: 68 @29450 has 6 MA's), (Start: 71 @29426 has 3 MA's), (74, 29414), (77, 29366), (82, 29339), (83, 29333), (84, 29318), (86, 29273), (88, 29264),

Gene: Leroy_37 Start: 30118, Stop: 29882, Start Num: 63

Candidate Starts for Leroy_37:

(Start: 63 @30118 has 31 MA's), (Start: 66 @30109 has 100 MA's), (Start: 67 @30106 has 18 MA's), (Start: 68 @30094 has 6 MA's), (Start: 71 @30070 has 3 MA's), (74, 30058), (83, 29977), (84, 29962), (88, 29908),

Gene: Lilas_35 Start: 29703, Stop: 29476, Start Num: 67

Candidate Starts for Lilas_35:

(Start: 66 @29706 has 100 MA's), (Start: 67 @29703 has 18 MA's), (Start: 68 @29691 has 6 MA's), (Start: 71 @29667 has 3 MA's), (74, 29655), (83, 29574), (84, 29559), (86, 29514), (88, 29505),

Gene: LitninMcQueen_35 Start: 28514, Stop: 28278, Start Num: 63

Candidate Starts for LitninMcQueen_35:

(Start: 63 @28514 has 31 MA's), (Start: 64 @28511 has 1 MA's), (Start: 66 @28505 has 100 MA's), (Start: 68 @28490 has 6 MA's), (69, 28487), (Start: 71 @28466 has 3 MA's), (74, 28454), (77, 28406), (82, 28379), (83, 28373), (84, 28358), (86, 28313), (88, 28304),

Gene: LonelyBoi_32 Start: 30030, Stop: 29803, Start Num: 66

Candidate Starts for LonelyBoi_32:

(5, 30270), (9, 30207), (17, 30159), (Start: 66 @30030 has 100 MA's), (Start: 68 @30015 has 6 MA's), (Start: 71 @29991 has 3 MA's), (74, 29979), (83, 29898), (84, 29883), (88, 29829),

Gene: Lton_27 Start: 23149, Stop: 22922, Start Num: 66

Candidate Starts for Lton_27:

(Start: 49 @23194 has 4 MA's), (Start: 66 @23149 has 100 MA's), (Start: 68 @23134 has 6 MA's), (Start: 71 @23110 has 3 MA's), (74, 23098), (77, 23050), (82, 23023), (83, 23017), (84, 23002), (86, 22957), (88, 22948),

Gene: Lucky10_31 Start: 26592, Stop: 26320, Start Num: 46

Candidate Starts for Lucky10_31:

(Start: 46 @26592 has 1 MA's), (Start: 66 @26547 has 100 MA's), (Start: 67 @26544 has 18 MA's), (Start: 68 @26532 has 6 MA's), (69, 26529), (Start: 71 @26508 has 3 MA's), (74, 26496), (84, 26400), (88, 26346),

Gene: Lutum_37 Start: 29098, Stop: 28871, Start Num: 66

Candidate Starts for Lutum_37:

(Start: 63 @29107 has 31 MA's), (Start: 66 @29098 has 100 MA's), (Start: 67 @29095 has 18 MA's), (Start: 68 @29083 has 6 MA's), (Start: 71 @29059 has 3 MA's), (74, 29047), (77, 28999), (79, 28984), (82, 28972), (83, 28966), (84, 28951), (86, 28906),

Gene: Lysidious_35 Start: 29428, Stop: 29201, Start Num: 66

Candidate Starts for Lysidious_35:

(Start: 63 @29437 has 31 MA's), (Start: 66 @29428 has 100 MA's), (Start: 68 @29413 has 6 MA's), (69, 29410), (Start: 71 @29389 has 3 MA's), (74, 29377), (77, 29329), (84, 29281), (88, 29227),

Gene: Malachai_36 Start: 30625, Stop: 30392, Start Num: 66

Candidate Starts for Malachai_36:

(Start: 66 @30625 has 100 MA's), (69, 30607), (Start: 71 @30586 has 3 MA's), (74, 30574), (79, 30511), (83, 30493), (84, 30478), (88, 30424), (91, 30400),

Gene: Malibo_36 Start: 29104, Stop: 28877, Start Num: 66

Candidate Starts for Malibo_36:

(Start: 49 @29149 has 4 MA's), (Start: 66 @29104 has 100 MA's), (Start: 73 @29056 has 3 MA's), (74, 29053), (76, 29026), (84, 28957), (88, 28903),

Gene: Malisha_37 Start: 29280, Stop: 29056, Start Num: 67

Candidate Starts for Malisha_37:

(Start: 63 @29292 has 31 MA's), (Start: 66 @29283 has 100 MA's), (Start: 67 @29280 has 18 MA's), (Start: 68 @29268 has 6 MA's), (Start: 71 @29244 has 3 MA's), (74, 29232), (83, 29151), (84, 29136), (86, 29091),

Gene: Marteena_32 Start: 27060, Stop: 26788, Start Num: 49

Candidate Starts for Marteena_32:

(Start: 49 @27060 has 4 MA's), (Start: 66 @27015 has 100 MA's), (Start: 73 @26967 has 3 MA's), (74, 26964), (76, 26937), (84, 26868),

Gene: Matteo_28 Start: 24466, Stop: 24239, Start Num: 66

Candidate Starts for Matteo_28:

(18, 24595), (24, 24580), (25, 24577), (26, 24574), (Start: 49 @24511 has 4 MA's), (Start: 63 @24475 has 31 MA's), (Start: 66 @24466 has 100 MA's), (Start: 67 @24463 has 18 MA's), (Start: 68 @24451 has 6 MA's), (69, 24448), (Start: 71 @24427 has 3 MA's), (74, 24415), (77, 24367), (83, 24334), (84, 24319), (88, 24265),

Gene: Mcklovin_32 Start: 30905, Stop: 30678, Start Num: 66

Candidate Starts for Mcklovin_32:

(Start: 66 @30905 has 100 MA's), (Start: 68 @30890 has 6 MA's), (Start: 71 @30866 has 3 MA's), (Start: 73 @30857 has 3 MA's), (74, 30854), (75, 30833), (84, 30758), (88, 30704),

Gene: MichaelScott_33 Start: 27967, Stop: 27740, Start Num: 66

Candidate Starts for MichaelScott_33:

(Start: 66 @27967 has 100 MA's), (Start: 68 @27952 has 6 MA's), (Start: 73 @27919 has 3 MA's), (74, 27916), (75, 27895), (82, 27841), (84, 27820), (88, 27766),

Gene: MintFen_33 Start: 29240, Stop: 29013, Start Num: 66

Candidate Starts for MintFen_33:

(Start: 49 @29285 has 4 MA's), (Start: 66 @29240 has 100 MA's), (Start: 68 @29225 has 6 MA's), (69, 29222), (74, 29189), (77, 29141), (83, 29108), (84, 29093), (88, 29039),

Gene: MissRona_35 Start: 29026, Stop: 28799, Start Num: 66

Candidate Starts for MissRona_35:

(12, 29194), (14, 29167), (Start: 49 @29071 has 4 MA's), (Start: 66 @29026 has 100 MA's), (Start: 71 @28987 has 3 MA's), (Start: 73 @28978 has 3 MA's), (74, 28975), (80, 28909), (83, 28894), (85, 28876), (88, 28825),

Gene: Mocha12_34 Start: 26548, Stop: 26321, Start Num: 66

Candidate Starts for Mocha12_34:

(Start: 62 @26557 has 3 MA's), (Start: 66 @26548 has 100 MA's), (69, 26530), (Start: 71 @26509 has 3 MA's), (74, 26497), (83, 26416), (84, 26401), (86, 26356), (87, 26350), (88, 26347),

Gene: Moosehead_29 Start: 23632, Stop: 23405, Start Num: 66

Candidate Starts for Moosehead_29:

(Start: 66 @23632 has 100 MA's), (69, 23614), (Start: 71 @23593 has 3 MA's), (72, 23587), (Start: 73 @23584 has 3 MA's), (74, 23581), (80, 23515), (82, 23506), (83, 23500), (84, 23485), (86, 23440), (88, 23431),

Gene: Morkie_30 Start: 25204, Stop: 24980, Start Num: 67

Candidate Starts for Morkie_30:

(Start: 66 @25207 has 100 MA's), (Start: 67 @25204 has 18 MA's), (Start: 68 @25192 has 6 MA's), (69, 25189), (Start: 71 @25168 has 3 MA's), (74, 25156), (80, 25090), (84, 25060), (88, 25006),

Gene: MortyNRick_34 Start: 28519, Stop: 28292, Start Num: 66

Candidate Starts for MortyNRick_34:

(Start: 66 @28519 has 100 MA's), (Start: 67 @28516 has 18 MA's), (Start: 68 @28504 has 6 MA's), (69, 28501), (Start: 71 @28480 has 3 MA's), (74, 28468), (77, 28420), (82, 28393), (83, 28387), (84, 28372), (86, 28327), (88, 28318),

Gene: Nubi_38 Start: 33576, Stop: 33340, Start Num: 63

Candidate Starts for Nubi_38:

(Start: 49 @33612 has 4 MA's), (Start: 63 @33576 has 31 MA's), (Start: 66 @33567 has 100 MA's), (Start: 68 @33552 has 6 MA's), (Start: 71 @33528 has 3 MA's), (74, 33516), (83, 33435), (84, 33420), (88, 33366),

Gene: Nymphadora_31 Start: 28844, Stop: 28608, Start Num: 66

Candidate Starts for Nymphadora_31:

(Start: 64 @28850 has 1 MA's), (Start: 66 @28844 has 100 MA's), (Start: 68 @28829 has 6 MA's), (69, 28826), (Start: 71 @28805 has 3 MA's), (72, 28799), (Start: 73 @28796 has 3 MA's), (74, 28793), (84, 28697),

Gene: ODay_40 Start: 30569, Stop: 30345, Start Num: 67

Candidate Starts for ODay_40:

(Start: 63 @30581 has 31 MA's), (Start: 66 @30572 has 100 MA's), (Start: 67 @30569 has 18 MA's), (Start: 68 @30557 has 6 MA's), (Start: 71 @30533 has 3 MA's), (74, 30521), (83, 30440), (84, 30425), (88, 30371),

Gene: Obliviate_32 Start: 28122, Stop: 27895, Start Num: 66

Candidate Starts for Obliviate_32:

(Start: 66 @28122 has 100 MA's), (Start: 67 @28119 has 18 MA's), (Start: 68 @28107 has 6 MA's), (69, 28104), (Start: 71 @28083 has 3 MA's), (74, 28071), (84, 27975), (88, 27921),

Gene: Ohgeesy_34 Start: 29848, Stop: 29636, Start Num: 68

Candidate Starts for Ohgeesy_34:

(22, 29983), (40, 29935), (50, 29908), (Start: 65 @29866 has 1 MA's), (Start: 66 @29863 has 100 MA's), (Start: 68 @29848 has 6 MA's), (Start: 71 @29824 has 3 MA's), (72, 29818), (Start: 73 @29815 has 3 MA's), (74, 29812), (84, 29716), (88, 29662),

Gene: OneDirection_28 Start: 23826, Stop: 23602, Start Num: 67

Candidate Starts for OneDirection_28:

(Start: 66 @23829 has 100 MA's), (Start: 67 @23826 has 18 MA's), (Start: 68 @23814 has 6 MA's), (69, 23811), (Start: 71 @23790 has 3 MA's), (74, 23778), (80, 23712), (84, 23682), (88, 23628),

Gene: Opie_35 Start: 29554, Stop: 29327, Start Num: 66

Candidate Starts for Opie_35:

(31, 29647), (43, 29614), (Start: 66 @29554 has 100 MA's), (Start: 73 @29506 has 3 MA's), (74, 29503), (76, 29476), (84, 29407), (88, 29353),

Gene: Oregano_34 Start: 27096, Stop: 26869, Start Num: 66

Candidate Starts for Oregano_34:

(Start: 66 @27096 has 100 MA's), (Start: 68 @27081 has 6 MA's), (Start: 73 @27048 has 3 MA's), (74, 27045), (75, 27024), (84, 26949), (88, 26895),

Gene: PCoral7_34 Start: 28574, Stop: 28347, Start Num: 66

Candidate Starts for PCoral7_34:

(Start: 66 @28574 has 100 MA's), (Start: 68 @28559 has 6 MA's), (Start: 71 @28535 has 3 MA's), (72, 28529), (Start: 73 @28526 has 3 MA's), (74, 28523), (75, 28502), (84, 28427), (88, 28373),

Gene: Pepperoni_29 Start: 24972, Stop: 24748, Start Num: 67

Candidate Starts for Pepperoni_29:

(Start: 66 @24975 has 100 MA's), (Start: 67 @24972 has 18 MA's), (Start: 68 @24960 has 6 MA's), (Start: 71 @24936 has 3 MA's), (74, 24924), (83, 24843), (84, 24828), (88, 24774),

Gene: Periwinkle_40 Start: 30562, Stop: 30326, Start Num: 63

Candidate Starts for Periwinkle_40:

(Start: 63 @30562 has 31 MA's), (Start: 66 @30553 has 100 MA's), (Start: 67 @30550 has 18 MA's), (Start: 68 @30538 has 6 MA's), (Start: 71 @30514 has 3 MA's), (74, 30502), (83, 30421), (84, 30406), (88, 30352),

Gene: Petra_35 Start: 29575, Stop: 29345, Start Num: 65

Candidate Starts for Petra_35:

(Start: 65 @29575 has 1 MA's), (Start: 66 @29572 has 100 MA's), (Start: 68 @29557 has 6 MA's), (69, 29554), (Start: 71 @29533 has 3 MA's), (74, 29521), (84, 29425), (88, 29371),

Gene: Phabuloso_34 Start: 28807, Stop: 28583, Start Num: 67

Candidate Starts for Phabuloso_34:

(Start: 63 @28819 has 31 MA's), (Start: 66 @28810 has 100 MA's), (Start: 67 @28807 has 18 MA's), (Start: 68 @28795 has 6 MA's), (Start: 71 @28771 has 3 MA's), (74, 28759), (83, 28678), (84, 28663), (86, 28618), (88, 28609),

Gene: Phistory_37 Start: 29459, Stop: 29223, Start Num: 63

Candidate Starts for Phistory_37:

(Start: 63 @29459 has 31 MA's), (Start: 66 @29450 has 100 MA's), (Start: 67 @29447 has 18 MA's), (Start: 68 @29435 has 6 MA's), (Start: 71 @29411 has 3 MA's), (74, 29399), (83, 29318), (84, 29303), (88, 29249),

Gene: Phlop_37 Start: 33648, Stop: 33421, Start Num: 66

Candidate Starts for Phlop_37:

(Start: 49 @33693 has 4 MA's), (Start: 63 @33657 has 31 MA's), (Start: 66 @33648 has 100 MA's), (Start: 68 @33633 has 6 MA's), (Start: 71 @33609 has 3 MA's), (74, 33597), (83, 33516), (84, 33501), (88, 33447),

Gene: PhorbesPhlower_29 Start: 24583, Stop: 24356, Start Num: 66

Candidate Starts for PhorbesPhlower_29:

(Start: 66 @24583 has 100 MA's), (69, 24565), (Start: 71 @24544 has 3 MA's), (74, 24532), (77, 24484), (82, 24457), (83, 24451), (84, 24436), (86, 24391), (88, 24382),

Gene: PhriskyACE_33 Start: 27013, Stop: 26786, Start Num: 66

Candidate Starts for PhriskyACE_33:

(Start: 66 @27013 has 100 MA's), (Start: 68 @26998 has 6 MA's), (Start: 71 @26974 has 3 MA's), (Start: 73 @26965 has 3 MA's), (74, 26962), (75, 26941), (84, 26866), (88, 26812),

Gene: PhrostedPhlake_36 Start: 29288, Stop: 29061, Start Num: 66

Candidate Starts for PhrostedPhlake_36:

(3, 29564), (7, 29504), (41, 29363), (44, 29348), (57, 29312), (Start: 65 @29291 has 1 MA's), (Start: 66 @29288 has 100 MA's), (Start: 67 @29285 has 18 MA's), (69, 29270), (Start: 71 @29249 has 3 MA's), (74, 29237), (84, 29141), (88, 29087),

Gene: Pickett_28 Start: 23332, Stop: 23105, Start Num: 66

Candidate Starts for Pickett_28:

(Start: 66 @23332 has 100 MA's), (69, 23314), (Start: 71 @23293 has 3 MA's), (74, 23281), (77, 23233), (82, 23206), (83, 23200), (84, 23185), (86, 23140),

Gene: PinkCoffee_40 Start: 33761, Stop: 33525, Start Num: 63

Candidate Starts for PinkCoffee_40:

(Start: 49 @33797 has 4 MA's), (Start: 63 @33761 has 31 MA's), (Start: 66 @33752 has 100 MA's), (Start: 68 @33737 has 6 MA's), (Start: 71 @33713 has 3 MA's), (74, 33701), (77, 33653), (83, 33620), (84, 33605), (88, 33551),

Gene: Pollux_34 Start: 29088, Stop: 28861, Start Num: 66

Candidate Starts for Pollux_34:

(Start: 49 @29133 has 4 MA's), (Start: 66 @29088 has 100 MA's), (Start: 73 @29040 has 3 MA's), (74, 29037), (76, 29010), (84, 28941),

Gene: Portcullis_38 Start: 33064, Stop: 32837, Start Num: 66

Candidate Starts for Portcullis_38:

(Start: 49 @33109 has 4 MA's), (Start: 63 @33073 has 31 MA's), (Start: 66 @33064 has 100 MA's), (Start: 68 @33049 has 6 MA's), (Start: 71 @33025 has 3 MA's), (74, 33013), (83, 32932), (84, 32917), (88, 32863),

Gene: Powerball_35 Start: 28956, Stop: 28720, Start Num: 66

Candidate Starts for Powerball_35:

(Start: 66 @28956 has 100 MA's), (Start: 68 @28941 has 6 MA's), (Start: 71 @28917 has 3 MA's), (Start: 73 @28908 has 3 MA's), (74, 28905), (75, 28884), (84, 28809), (88, 28755),

Gene: PrincePatrick_33 Start: 27253, Stop: 27026, Start Num: 66

Candidate Starts for PrincePatrick_33:

(Start: 66 @27253 has 100 MA's), (Start: 68 @27238 has 6 MA's), (Start: 71 @27214 has 3 MA's), (Start: 73 @27205 has 3 MA's), (74, 27202), (75, 27181), (81, 27133), (84, 27106),

Gene: PullumCavea_37 Start: 33648, Stop: 33421, Start Num: 66

Candidate Starts for PullumCavea_37:

(Start: 49 @33693 has 4 MA's), (Start: 63 @33657 has 31 MA's), (Start: 66 @33648 has 100 MA's), (Start: 68 @33633 has 6 MA's), (Start: 71 @33609 has 3 MA's), (74, 33597), (83, 33516), (84, 33501), (88, 33447),

Gene: Pytheas_35 Start: 30023, Stop: 29796, Start Num: 66

Candidate Starts for Pytheas_35:

(Start: 66 @30023 has 100 MA's), (Start: 68 @30008 has 6 MA's), (Start: 71 @29984 has 3 MA's), (72, 29978), (Start: 73 @29975 has 3 MA's), (74, 29972), (83, 29891), (84, 29876), (86, 29831), (88, 29822),

Gene: RayTheFireFly_35 Start: 29149, Stop: 28925, Start Num: 67

Candidate Starts for RayTheFireFly_35:

(Start: 66 @29152 has 100 MA's), (Start: 67 @29149 has 18 MA's), (Start: 68 @29137 has 6 MA's), (69, 29134), (Start: 71 @29113 has 3 MA's), (74, 29101), (83, 29020), (84, 29005), (88, 28951),

Gene: RogerDodger_41 Start: 33903, Stop: 33667, Start Num: 63

Candidate Starts for RogerDodger_41:

(Start: 49 @33939 has 4 MA's), (Start: 63 @33903 has 31 MA's), (Start: 66 @33894 has 100 MA's), (Start: 68 @33879 has 6 MA's), (Start: 71 @33855 has 3 MA's), (74, 33843), (77, 33795), (83, 33762), (84, 33747), (88, 33693),

Gene: Ruthy_34 Start: 29303, Stop: 29040, Start Num: 51

Candidate Starts for Ruthy_34:

(Start: 51 @29303 has 1 MA's), (Start: 65 @29270 has 1 MA's), (Start: 66 @29267 has 100 MA's), (Start: 68 @29252 has 6 MA's), (Start: 71 @29228 has 3 MA's), (72, 29222), (Start: 73 @29219 has 3 MA's), (74, 29216), (84, 29120), (88, 29066),

Gene: Sahara_33 Start: 26218, Stop: 25991, Start Num: 66

Candidate Starts for Sahara_33:

(23, 26341), (42, 26287), (56, 26245), (59, 26239), (Start: 66 @26218 has 100 MA's), (Start: 68 @26203 has 6 MA's), (69, 26200), (Start: 71 @26179 has 3 MA's), (74, 26167), (83, 26086), (84, 26071), (86, 26026), (87, 26020), (88, 26017),

Gene: Salvador_37 Start: 33571, Stop: 33335, Start Num: 63

Candidate Starts for Salvador_37:

(Start: 49 @33607 has 4 MA's), (Start: 63 @33571 has 31 MA's), (Start: 66 @33562 has 100 MA's), (Start: 68 @33547 has 6 MA's), (Start: 71 @33523 has 3 MA's), (74, 33511), (83, 33430), (84, 33415), (88, 33361),

Gene: Samba_36 Start: 30626, Stop: 30390, Start Num: 63

Candidate Starts for Samba_36:

(Start: 63 @30626 has 31 MA's), (Start: 66 @30617 has 100 MA's), (Start: 68 @30602 has 6 MA's), (69, 30599), (Start: 71 @30578 has 3 MA's), (74, 30566), (77, 30518), (83, 30485), (84, 30470), (86, 30425), (88, 30416),

Gene: Samman98_32 Start: 26076, Stop: 25849, Start Num: 66

Candidate Starts for Samman98_32:

(2, 26340), (4, 26334), (6, 26289), (11, 26241), (16, 26205), (28, 26172), (Start: 66 @26076 has 100 MA's), (Start: 68 @26061 has 6 MA's), (Start: 71 @26037 has 3 MA's), (Start: 73 @26028 has 3 MA's), (74, 26025), (75, 26004), (82, 25950), (84, 25929),

Gene: Savage_34 Start: 26557, Stop: 26321, Start Num: 62

Candidate Starts for Savage_34:

(Start: 62 @26557 has 3 MA's), (Start: 66 @26548 has 100 MA's), (69, 26530), (Start: 71 @26509 has 3 MA's), (74, 26497), (83, 26416), (84, 26401), (86, 26356), (87, 26350), (88, 26347),

Gene: Savbucketdawg_37 Start: 33343, Stop: 33116, Start Num: 66

Candidate Starts for Savbucketdawg_37:

(Start: 49 @33388 has 4 MA's), (Start: 63 @33352 has 31 MA's), (Start: 66 @33343 has 100 MA's), (Start: 68 @33328 has 6 MA's), (Start: 71 @33304 has 3 MA's), (74, 33292), (83, 33211), (84, 33196), (88, 33142),

Gene: Sekhmet_35 Start: 27809, Stop: 27582, Start Num: 66

Candidate Starts for Sekhmet_35:

(Start: 66 @27809 has 100 MA's), (Start: 68 @27794 has 6 MA's), (Start: 73 @27761 has 3 MA's), (74, 27758), (75, 27737), (82, 27683), (84, 27662), (88, 27608),

Gene: Shinji_38 Start: 33014, Stop: 32778, Start Num: 63

Candidate Starts for Shinji_38:

(Start: 49 @33050 has 4 MA's), (Start: 63 @33014 has 31 MA's), (Start: 66 @33005 has 100 MA's), (Start: 68 @32990 has 6 MA's), (Start: 71 @32966 has 3 MA's), (74, 32954), (78, 32900), (82, 32879), (83, 32873), (84, 32858), (86, 32813), (87, 32807), (88, 32804),

Gene: Shlim410_32 Start: 28665, Stop: 28453, Start Num: 68

Candidate Starts for Shlim410_32:

(Start: 68 @28665 has 6 MA's), (Start: 71 @28641 has 3 MA's), (Start: 73 @28632 has 3 MA's), (74, 28629), (75, 28608), (84, 28533), (86, 28488), (88, 28479),

Gene: SmokingBunny_37 Start: 33562, Stop: 33326, Start Num: 63

Candidate Starts for SmokingBunny_37:

(Start: 49 @33598 has 4 MA's), (Start: 63 @33562 has 31 MA's), (Start: 66 @33553 has 100 MA's),
(Start: 68 @33538 has 6 MA's), (Start: 71 @33514 has 3 MA's), (74, 33502), (83, 33421), (84, 33406),
(88, 33352),

Gene: Spooky_36 Start: 28938, Stop: 28702, Start Num: 63

Candidate Starts for Spooky_36:

(Start: 63 @28938 has 31 MA's), (Start: 66 @28929 has 100 MA's), (Start: 67 @28926 has 18 MA's),
(Start: 68 @28914 has 6 MA's), (Start: 71 @28890 has 3 MA's), (74, 28878), (82, 28803), (83, 28797),
(84, 28782), (86, 28737),

Gene: Sproutie_34 Start: 26557, Stop: 26321, Start Num: 62

Candidate Starts for Sproutie_34:

(Start: 62 @26557 has 3 MA's), (Start: 66 @26548 has 100 MA's), (69, 26530), (Start: 71 @26509 has
3 MA's), (74, 26497), (83, 26416), (84, 26401), (86, 26356), (87, 26350), (88, 26347),

Gene: Squiddly_38 Start: 30313, Stop: 30086, Start Num: 66

Candidate Starts for Squiddly_38:

(Start: 63 @30322 has 31 MA's), (Start: 66 @30313 has 100 MA's), (Start: 67 @30310 has 18 MA's),
(Start: 68 @30298 has 6 MA's), (Start: 71 @30274 has 3 MA's), (74, 30262), (83, 30181), (84, 30166),
(86, 30121),

Gene: Suerte_31 Start: 27445, Stop: 27218, Start Num: 66

Candidate Starts for Suerte_31:

(Start: 66 @27445 has 100 MA's), (Start: 71 @27406 has 3 MA's), (74, 27394), (75, 27373), (84,
27298), (88, 27244),

Gene: TaronosaurusRx_33 Start: 28259, Stop: 28032, Start Num: 66

Candidate Starts for TaronosaurusRx_33:

(Start: 49 @28307 has 4 MA's), (Start: 63 @28268 has 31 MA's), (Start: 64 @28265 has 1 MA's),
(Start: 66 @28259 has 100 MA's), (Start: 68 @28244 has 6 MA's), (Start: 71 @28220 has 3 MA's),
(72, 28214), (Start: 73 @28211 has 3 MA's), (74, 28208), (82, 28133), (83, 28127), (84, 28112), (86,
28067), (88, 28058),

Gene: ThankyouJordi_35 Start: 30189, Stop: 30010, Start Num: 73

Candidate Starts for ThankyouJordi_35:

(44, 30288), (Start: 66 @30237 has 100 MA's), (Start: 71 @30198 has 3 MA's), (Start: 73 @30189 has
3 MA's), (84, 30090), (85, 30087), (88, 30036),

Gene: Thimann_32 Start: 26356, Stop: 26129, Start Num: 66

Candidate Starts for Thimann_32:

(Start: 66 @26356 has 100 MA's), (Start: 68 @26341 has 6 MA's), (Start: 71 @26317 has 3 MA's),
(Start: 73 @26308 has 3 MA's), (74, 26305), (75, 26284), (84, 26209), (88, 26155),

Gene: TillyBobJoe_37 Start: 33366, Stop: 33130, Start Num: 63

Candidate Starts for TillyBobJoe_37:

(Start: 49 @33402 has 4 MA's), (Start: 63 @33366 has 31 MA's), (Start: 66 @33357 has 100 MA's),
(Start: 68 @33342 has 6 MA's), (Start: 71 @33318 has 3 MA's), (74, 33306), (83, 33225), (84, 33210),
(88, 33156),

Gene: TimTam_31 Start: 28844, Stop: 28608, Start Num: 66

Candidate Starts for TimTam_31:

(Start: 64 @28850 has 1 MA's), (Start: 66 @28844 has 100 MA's), (Start: 68 @28829 has 6 MA's), (69, 28826), (Start: 71 @28805 has 3 MA's), (72, 28799), (Start: 73 @28796 has 3 MA's), (74, 28793), (84, 28697),

Gene: TinyDot_30 Start: 24493, Stop: 24266, Start Num: 66

Candidate Starts for TinyDot_30:

(Start: 49 @24538 has 4 MA's), (Start: 66 @24493 has 100 MA's), (Start: 68 @24478 has 6 MA's), (70, 24469), (Start: 71 @24454 has 3 MA's), (74, 24442), (77, 24394), (82, 24367), (83, 24361), (84, 24346), (86, 24301), (88, 24292),

Gene: Toast_34 Start: 28574, Stop: 28347, Start Num: 66

Candidate Starts for Toast_34:

(Start: 66 @28574 has 100 MA's), (Start: 68 @28559 has 6 MA's), (Start: 71 @28535 has 3 MA's), (72, 28529), (Start: 73 @28526 has 3 MA's), (74, 28523), (75, 28502), (84, 28427), (88, 28373),

Gene: Togo_37 Start: 33553, Stop: 33326, Start Num: 66

Candidate Starts for Togo_37:

(Start: 49 @33598 has 4 MA's), (Start: 63 @33562 has 31 MA's), (Start: 66 @33553 has 100 MA's), (Start: 68 @33538 has 6 MA's), (Start: 71 @33514 has 3 MA's), (74, 33502), (83, 33421), (84, 33406), (88, 33352),

Gene: TuertoX_34 Start: 26548, Stop: 26321, Start Num: 66

Candidate Starts for TuertoX_34:

(Start: 62 @26557 has 3 MA's), (Start: 66 @26548 has 100 MA's), (69, 26530), (Start: 71 @26509 has 3 MA's), (74, 26497), (83, 26416), (84, 26401), (86, 26356), (87, 26350), (88, 26347),

Gene: Twinkle_32 Start: 29724, Stop: 29512, Start Num: 68

Candidate Starts for Twinkle_32:

(Start: 68 @29724 has 6 MA's), (Start: 71 @29700 has 3 MA's), (Start: 73 @29691 has 3 MA's), (74, 29688), (75, 29667), (84, 29592), (86, 29547), (88, 29538),

Gene: Twister6_40 Start: 33465, Stop: 33229, Start Num: 63

Candidate Starts for Twister6_40:

(Start: 49 @33501 has 4 MA's), (Start: 63 @33465 has 31 MA's), (Start: 66 @33456 has 100 MA's), (Start: 68 @33441 has 6 MA's), (Start: 71 @33417 has 3 MA's), (74, 33405), (83, 33324), (84, 33309), (88, 33255),

Gene: UmaThurman_31 Start: 28735, Stop: 28508, Start Num: 66

Candidate Starts for UmaThurman_31:

(Start: 66 @28735 has 100 MA's), (Start: 68 @28720 has 6 MA's), (Start: 71 @28696 has 3 MA's), (74, 28684), (77, 28636), (84, 28588), (88, 28534),

Gene: Valary_40 Start: 34508, Stop: 34272, Start Num: 63

Candidate Starts for Valary_40:

(Start: 49 @34544 has 4 MA's), (Start: 63 @34508 has 31 MA's), (Start: 66 @34499 has 100 MA's), (Start: 68 @34484 has 6 MA's), (Start: 71 @34460 has 3 MA's), (74, 34448), (77, 34400), (83, 34367), (84, 34352), (88, 34298),

Gene: VanDeWege_41 Start: 33791, Stop: 33564, Start Num: 66

Candidate Starts for VanDeWege_41:

(Start: 49 @33836 has 4 MA's), (Start: 63 @33800 has 31 MA's), (Start: 66 @33791 has 100 MA's), (Start: 68 @33776 has 6 MA's), (Start: 71 @33752 has 3 MA's), (74, 33740), (77, 33692), (83, 33659), (84, 33644), (88, 33590),

Gene: Vasanti_34 Start: 26861, Stop: 26634, Start Num: 66

Candidate Starts for Vasanti_34:

(27, 26972), (44, 26918), (47, 26912), (Start: 66 @26861 has 100 MA's), (69, 26843), (Start: 71 @26822 has 3 MA's), (Start: 73 @26813 has 3 MA's), (74, 26810), (75, 26789), (76, 26783), (84, 26714), (85, 26711), (88, 26660),

Gene: Walrus_36 Start: 29330, Stop: 29094, Start Num: 63

Candidate Starts for Walrus_36:

(30, 29423), (32, 29420), (39, 29399), (58, 29345), (60, 29336), (Start: 63 @29330 has 31 MA's), (Start: 66 @29321 has 100 MA's), (Start: 68 @29306 has 6 MA's), (Start: 71 @29282 has 3 MA's), (74, 29270), (82, 29195), (83, 29189), (84, 29174), (88, 29120),

Gene: WelcomeAyanna_35 Start: 30384, Stop: 30157, Start Num: 66

Candidate Starts for WelcomeAyanna_35:

(44, 30435), (Start: 66 @30384 has 100 MA's), (Start: 71 @30345 has 3 MA's), (Start: 73 @30336 has 3 MA's), (84, 30237), (85, 30234), (88, 30183),

Gene: Whiteclaw_34 Start: 26548, Stop: 26321, Start Num: 66

Candidate Starts for Whiteclaw_34:

(Start: 62 @26557 has 3 MA's), (Start: 66 @26548 has 100 MA's), (69, 26530), (Start: 71 @26509 has 3 MA's), (74, 26497), (83, 26416), (84, 26401), (86, 26356), (87, 26350), (88, 26347),

Gene: Whitney_40 Start: 32148, Stop: 31924, Start Num: 67

Candidate Starts for Whitney_40:

(Start: 66 @32151 has 100 MA's), (Start: 67 @32148 has 18 MA's), (Start: 68 @32136 has 6 MA's), (Start: 71 @32112 has 3 MA's), (74, 32100), (77, 32052), (82, 32025), (83, 32019), (84, 32004), (86, 31959), (88, 31950),

Gene: William_35 Start: 28714, Stop: 28487, Start Num: 66

Candidate Starts for William_35:

(Start: 66 @28714 has 100 MA's), (Start: 68 @28699 has 6 MA's), (Start: 71 @28675 has 3 MA's), (74, 28663), (75, 28642), (82, 28588), (84, 28567), (86, 28522),

Gene: Wisp_30 Start: 27726, Stop: 27493, Start Num: 66

Candidate Starts for Wisp_30:

(Start: 66 @27726 has 100 MA's), (Start: 67 @27723 has 18 MA's), (Start: 68 @27711 has 6 MA's), (Start: 71 @27687 has 3 MA's), (74, 27675), (77, 27627), (83, 27594), (84, 27579), (88, 27525), (91, 27501),

Gene: Wizard_37 Start: 33705, Stop: 33469, Start Num: 63

Candidate Starts for Wizard_37:

(Start: 49 @33741 has 4 MA's), (Start: 63 @33705 has 31 MA's), (Start: 66 @33696 has 100 MA's), (Start: 68 @33681 has 6 MA's), (Start: 71 @33657 has 3 MA's), (74, 33645), (83, 33564), (84, 33549), (88, 33495),

Gene: Wocket_36 Start: 28733, Stop: 28506, Start Num: 66

Candidate Starts for Wocket_36:

(10, 28913), (13, 28895), (21, 28853), (Start: 65 @28736 has 1 MA's), (Start: 66 @28733 has 100 MA's), (Start: 67 @28730 has 18 MA's), (Start: 68 @28718 has 6 MA's), (69, 28715), (Start: 71 @28694 has 3 MA's), (Start: 73 @28685 has 3 MA's), (74, 28682), (81, 28613), (82, 28607), (85, 28583), (86, 28541), (88, 28532),

Gene: YungMoney_39 Start: 34979, Stop: 34755, Start Num: 67

Candidate Starts for YungMoney_39:

(34, 35072), (35, 35066), (37, 35063), (38, 35060), (42, 35051), (47, 35036), (Start: 66 @34982 has 100 MA's), (Start: 67 @34979 has 18 MA's), (Start: 68 @34967 has 6 MA's), (Start: 71 @34943 has 3 MA's), (74, 34931), (84, 34835), (86, 34790), (88, 34781),

Gene: ZAYM_35 Start: 28842, Stop: 28630, Start Num: 68

Candidate Starts for ZAYM_35:

(1, 29226), (19, 28986), (20, 28980), (33, 28944), (36, 28935), (45, 28911), (Start: 66 @28857 has 100 MA's), (Start: 67 @28854 has 18 MA's), (Start: 68 @28842 has 6 MA's), (Start: 71 @28818 has 3 MA's), (72, 28812), (Start: 73 @28809 has 3 MA's), (74, 28806), (83, 28725), (84, 28710), (88, 28656),

Gene: Zarbodnamra_33 Start: 28639, Stop: 28412, Start Num: 66

Candidate Starts for Zarbodnamra_33:

(Start: 49 @28684 has 4 MA's), (Start: 66 @28639 has 100 MA's), (Start: 68 @28624 has 6 MA's), (69, 28621), (Start: 71 @28600 has 3 MA's), (74, 28588), (77, 28540), (80, 28522), (84, 28492), (86, 28447), (88, 28438), (89, 28435),

Gene: ZiggyZoo_34 Start: 28938, Stop: 28711, Start Num: 66

Candidate Starts for ZiggyZoo_34:

(Start: 66 @28938 has 100 MA's), (Start: 67 @28935 has 18 MA's), (Start: 68 @28923 has 6 MA's), (69, 28920), (Start: 71 @28899 has 3 MA's), (74, 28887), (84, 28791), (88, 28737),