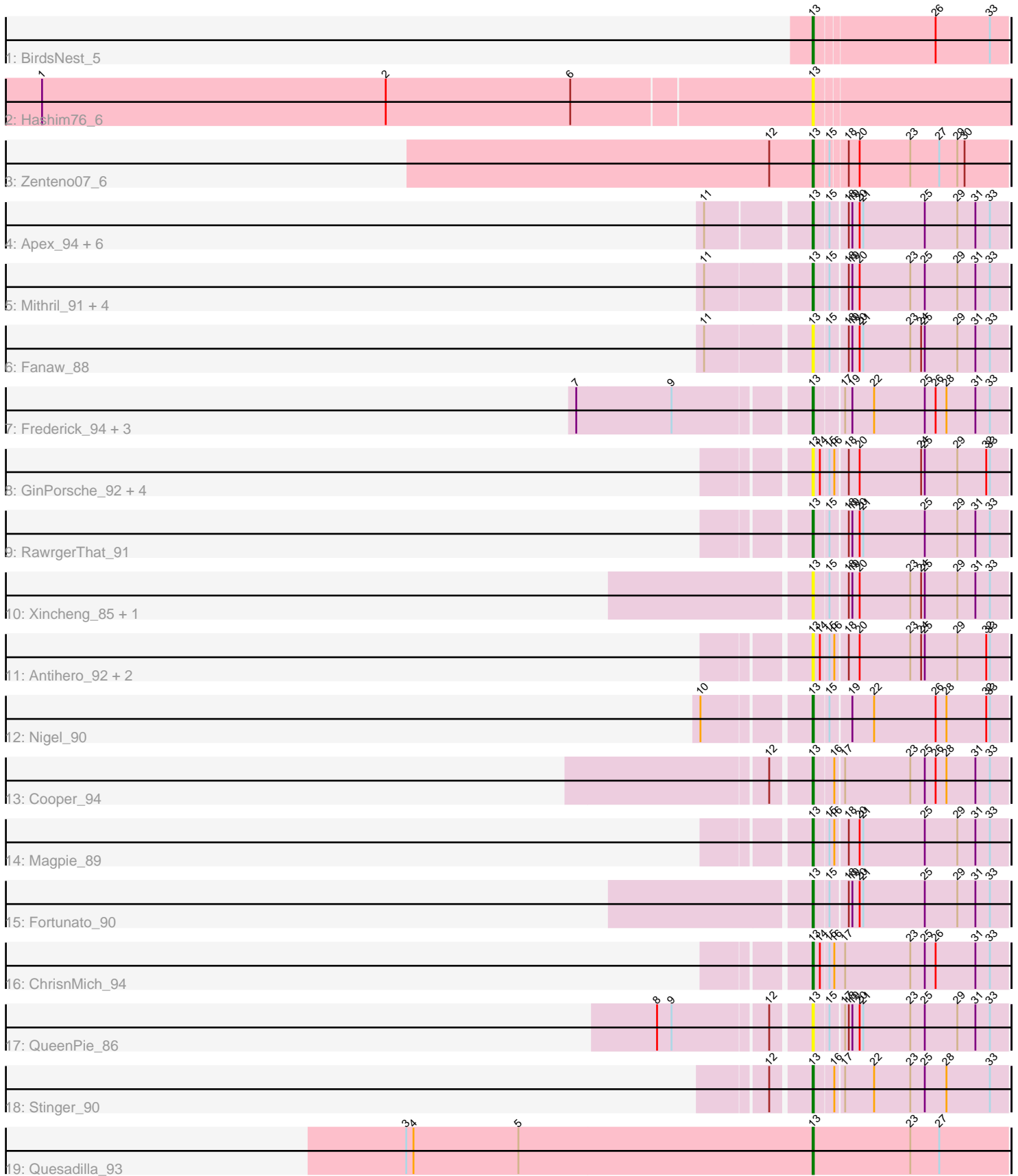


Pham 179246



Note: Tracks are now grouped by subcluster and scaled. Switching in subcluster is indicated by changes in track color. Track scale is now set by default to display the region 30 bp upstream of start 1 to 30 bp downstream of the last possible start. If this default region is judged to be packed too tightly with annotated starts, the track will be further scaled to only show that region of the ORF with annotated starts. This action will be indicated by adding "Zoomed" to the title. For starts, yellow indicates the location of called starts comprised solely of Glimmer/GeneMark auto-annotations, green indicates the location of called starts with at least 1 manual gene annotation.

Pham 179246 Report

This analysis was run 11/02/24 on database version 579.

Pham number 179246 has 39 members, 13 are drafts.

Phages represented in each track:

- Track 1 : BirdsNest_5
- Track 2 : Hashim76_6
- Track 3 : Zenteno07_6
- Track 4 : Apex_94, Prince_93, Mudslide_94, JAMaL_94, Hydro_93, VioletZ_95, Austelle_93
- Track 5 : Mithril_91, Lolalove_95, BrownCNA_93, Hangman_93, Waleliano_92
- Track 6 : Fanaw_88
- Track 7 : Frederick_94, Zemanar_91, Heath_87, BobbyK_93
- Track 8 : GinPorsche_92, Hally898_90, Nanao_92, Poster_91, Lambano_90
- Track 9 : RawrgerThat_91
- Track 10 : Xincheng_85, JaguarMi_87
- Track 11 : Antihero_92, Ahwei_90, Epah_92
- Track 12 : Nigel_90
- Track 13 : Cooper_94
- Track 14 : Magpie_89
- Track 15 : Fortunato_90
- Track 16 : ChrisnMich_94
- Track 17 : QueenPie_86
- Track 18 : Stinger_90
- Track 19 : Quesadilla_93

Summary of Final Annotations (See graph section above for start numbers):

The start number called the most often in the published annotations is 13, it was called in 26 of the 26 non-draft genes in the pham.

Genes that call this "Most Annotated" start:

- Ahwei_90, Antihero_92, Apex_94, Austelle_93, BirdsNest_5, BobbyK_93, BrownCNA_93, ChrisnMich_94, Cooper_94, Epah_92, Fanaw_88, Fortunato_90, Frederick_94, GinPorsche_92, Hally898_90, Hangman_93, Hashim76_6, Heath_87, Hydro_93, JAMaL_94, JaguarMi_87, Lambano_90, Lolalove_95, Magpie_89, Mithril_91, Mudslide_94, Nanao_92, Nigel_90, Poster_91, Prince_93, QueenPie_86, Quesadilla_93, RawrgerThat_91, Stinger_90, VioletZ_95, Waleliano_92, Xincheng_85, Zemanar_91, Zenteno07_6,

Genes that have the "Most Annotated" start but do not call it:

-

Genes that do not have the "Most Annotated" start:

-

Summary by start number:

Start 13:

- Found in 39 of 39 (100.0%) of genes in pham
- Manual Annotations of this start: 26 of 26
- Called 100.0% of time when present
- Phage (with cluster) where this start called: Ahwei_90 (B4), Antihero_92 (B4), Apex_94 (B4), Austelle_93 (B4), BirdsNest_5 (B13), BobbyK_93 (B4), BrownCNA_93 (B4), ChrisnMich_94 (B4), Cooper_94 (B4), Epah_92 (B4), Fanaw_88 (B4), Fortunato_90 (B4), Frederick_94 (B4), GinPorsche_92 (B4), Hally898_90 (B4), Hangman_93 (B4), Hashim76_6 (B13), Heath_87 (B4), Hydro_93 (B4), JAMaL_94 (B4), JaguarMi_87 (B4), Lambano_90 (B4), Lolalove_95 (B4), Magpie_89 (B4), Mithril_91 (B4), Mudslide_94 (B4), Nanao_92 (B4), Nigel_90 (B4), Poster_91 (B4), Prince_93 (B4), QueenPie_86 (B4), Quesadilla_93 (B9), RawrgerThat_91 (B4), Stinger_90 (B4), VioletZ_95 (B4), Waleliano_92 (B4), Xincheng_85 (B4), Zemanar_91 (B4), Zenteno07_6 (B13),

Summary by clusters:

There are 3 clusters represented in this pham: B4, B13, B9,

Info for manual annotations of cluster B13:

- Start number 13 was manually annotated 2 times for cluster B13.

Info for manual annotations of cluster B4:

- Start number 13 was manually annotated 23 times for cluster B4.

Info for manual annotations of cluster B9:

- Start number 13 was manually annotated 1 time for cluster B9.

Gene Information:

Gene: Ahwei_90 Start: 68173, Stop: 68018, Start Num: 13

Candidate Starts for Ahwei_90:

(Start: 13 @68173 has 26 MA's), (14, 68167), (15, 68161), (16, 68158), (18, 68149), (20, 68140), (23, 68098), (24, 68089), (25, 68086), (29, 68059), (32, 68035), (33, 68032),

Gene: Antihero_92 Start: 68098, Stop: 67943, Start Num: 13

Candidate Starts for Antihero_92:

(Start: 13 @68098 has 26 MA's), (14, 68092), (15, 68086), (16, 68083), (18, 68074), (20, 68065), (23, 68023), (24, 68014), (25, 68011), (29, 67984), (32, 67960), (33, 67957),

Gene: Apex_94 Start: 69212, Stop: 69057, Start Num: 13

Candidate Starts for Apex_94:

(11, 69293), (Start: 13 @69212 has 26 MA's), (15, 69200), (18, 69188), (19, 69185), (20, 69179), (21, 69176), (25, 69125), (29, 69098), (31, 69083), (33, 69071),

Gene: Austelle_93 Start: 69744, Stop: 69589, Start Num: 13

Candidate Starts for Austelle_93:

(11, 69825), (Start: 13 @69744 has 26 MA's), (15, 69732), (18, 69720), (19, 69717), (20, 69711), (21, 69708), (25, 69657), (29, 69630), (31, 69615), (33, 69603),

Gene: BirdsNest_5 Start: 1077, Stop: 1232, Start Num: 13

Candidate Starts for BirdsNest_5:

(Start: 13 @1077 has 26 MA's), (26, 1173), (33, 1218),

Gene: BobbyK_93 Start: 68720, Stop: 68565, Start Num: 13

Candidate Starts for BobbyK_93:

(7, 68903), (9, 68825), (Start: 13 @68720 has 26 MA's), (17, 68699), (19, 68693), (22, 68675), (25, 68633), (26, 68624), (28, 68615), (31, 68591), (33, 68579),

Gene: BrownCNA_93 Start: 69159, Stop: 69004, Start Num: 13

Candidate Starts for BrownCNA_93:

(11, 69240), (Start: 13 @69159 has 26 MA's), (15, 69147), (18, 69135), (19, 69132), (20, 69126), (23, 69084), (25, 69072), (29, 69045), (31, 69030), (33, 69018),

Gene: ChrisnMich_94 Start: 67789, Stop: 67631, Start Num: 13

Candidate Starts for ChrisnMich_94:

(Start: 13 @67789 has 26 MA's), (14, 67783), (15, 67777), (16, 67774), (17, 67765), (23, 67711), (25, 67699), (26, 67690), (31, 67657), (33, 67645),

Gene: Cooper_94 Start: 68332, Stop: 68177, Start Num: 13

Candidate Starts for Cooper_94:

(12, 68362), (Start: 13 @68332 has 26 MA's), (16, 68317), (17, 68311), (23, 68257), (25, 68245), (26, 68236), (28, 68227), (31, 68203), (33, 68191),

Gene: Epah_92 Start: 68098, Stop: 67943, Start Num: 13

Candidate Starts for Epah_92:

(Start: 13 @68098 has 26 MA's), (14, 68092), (15, 68086), (16, 68083), (18, 68074), (20, 68065), (23, 68023), (24, 68014), (25, 68011), (29, 67984), (32, 67960), (33, 67957),

Gene: Fanaw_88 Start: 68764, Stop: 68609, Start Num: 13

Candidate Starts for Fanaw_88:

(11, 68845), (Start: 13 @68764 has 26 MA's), (15, 68752), (18, 68740), (19, 68737), (20, 68731), (21, 68728), (23, 68689), (24, 68680), (25, 68677), (29, 68650), (31, 68635), (33, 68623),

Gene: Fortunato_90 Start: 68521, Stop: 68366, Start Num: 13

Candidate Starts for Fortunato_90:

(Start: 13 @68521 has 26 MA's), (15, 68509), (18, 68497), (19, 68494), (20, 68488), (21, 68485), (25, 68434), (29, 68407), (31, 68392), (33, 68380),

Gene: Frederick_94 Start: 69026, Stop: 68871, Start Num: 13

Candidate Starts for Frederick_94:

(7, 69209), (9, 69131), (Start: 13 @69026 has 26 MA's), (17, 69005), (19, 68999), (22, 68981), (25, 68939), (26, 68930), (28, 68921), (31, 68897), (33, 68885),

Gene: GinPorsche_92 Start: 68095, Stop: 67940, Start Num: 13

Candidate Starts for GinPorsche_92:

(Start: 13 @68095 has 26 MA's), (14, 68089), (15, 68083), (16, 68080), (18, 68071), (20, 68062), (24, 68011), (25, 68008), (29, 67981), (32, 67957), (33, 67954),

Gene: Hally898_90 Start: 67935, Stop: 67780, Start Num: 13

Candidate Starts for Hally898_90:

(Start: 13 @67935 has 26 MA's), (14, 67929), (15, 67923), (16, 67920), (18, 67911), (20, 67902), (24, 67851), (25, 67848), (29, 67821), (32, 67797), (33, 67794),

Gene: Hangman_93 Start: 69321, Stop: 69166, Start Num: 13

Candidate Starts for Hangman_93:

(11, 69402), (Start: 13 @69321 has 26 MA's), (15, 69309), (18, 69297), (19, 69294), (20, 69288), (23, 69246), (25, 69234), (29, 69207), (31, 69192), (33, 69180),

Gene: Hashim76_6 Start: 1325, Stop: 1483, Start Num: 13

Candidate Starts for Hashim76_6:

(1, 692), (2, 977), (6, 1130), (Start: 13 @1325 has 26 MA's),

Gene: Heath_87 Start: 67091, Stop: 66936, Start Num: 13

Candidate Starts for Heath_87:

(7, 67274), (9, 67196), (Start: 13 @67091 has 26 MA's), (17, 67070), (19, 67064), (22, 67046), (25, 67004), (26, 66995), (28, 66986), (31, 66962), (33, 66950),

Gene: Hydro_93 Start: 69108, Stop: 68953, Start Num: 13

Candidate Starts for Hydro_93:

(11, 69189), (Start: 13 @69108 has 26 MA's), (15, 69096), (18, 69084), (19, 69081), (20, 69075), (21, 69072), (25, 69021), (29, 68994), (31, 68979), (33, 68967),

Gene: JAMaL_94 Start: 68808, Stop: 68653, Start Num: 13

Candidate Starts for JAMaL_94:

(11, 68889), (Start: 13 @68808 has 26 MA's), (15, 68796), (18, 68784), (19, 68781), (20, 68775), (21, 68772), (25, 68721), (29, 68694), (31, 68679), (33, 68667),

Gene: JaguarMi_87 Start: 69082, Stop: 68927, Start Num: 13

Candidate Starts for JaguarMi_87:

(Start: 13 @69082 has 26 MA's), (15, 69070), (18, 69058), (19, 69055), (20, 69049), (23, 69007), (24, 68998), (25, 68995), (29, 68968), (31, 68953), (33, 68941),

Gene: Lambano_90 Start: 67935, Stop: 67780, Start Num: 13

Candidate Starts for Lambano_90:

(Start: 13 @67935 has 26 MA's), (14, 67929), (15, 67923), (16, 67920), (18, 67911), (20, 67902), (24, 67851), (25, 67848), (29, 67821), (32, 67797), (33, 67794),

Gene: Lolalove_95 Start: 69056, Stop: 68901, Start Num: 13

Candidate Starts for Lolalove_95:

(11, 69137), (Start: 13 @69056 has 26 MA's), (15, 69044), (18, 69032), (19, 69029), (20, 69023), (23, 68981), (25, 68969), (29, 68942), (31, 68927), (33, 68915),

Gene: Magpie_89 Start: 68870, Stop: 68715, Start Num: 13

Candidate Starts for Magpie_89:

(Start: 13 @68870 has 26 MA's), (15, 68858), (16, 68855), (18, 68846), (20, 68837), (21, 68834), (25, 68783), (29, 68756), (31, 68741), (33, 68729),

Gene: Mithril_91 Start: 68882, Stop: 68727, Start Num: 13

Candidate Starts for Mithril_91:

(11, 68963), (Start: 13 @68882 has 26 MA's), (15, 68870), (18, 68858), (19, 68855), (20, 68849), (23, 68807), (25, 68795), (29, 68768), (31, 68753), (33, 68741),

Gene: Mudslide_94 Start: 69287, Stop: 69132, Start Num: 13

Candidate Starts for Mudslide_94:

(11, 69368), (Start: 13 @69287 has 26 MA's), (15, 69275), (18, 69263), (19, 69260), (20, 69254), (21, 69251), (25, 69200), (29, 69173), (31, 69158), (33, 69146),

Gene: Nanao_92 Start: 67948, Stop: 67793, Start Num: 13

Candidate Starts for Nanao_92:

(Start: 13 @67948 has 26 MA's), (14, 67942), (15, 67936), (16, 67933), (18, 67924), (20, 67915), (24, 67864), (25, 67861), (29, 67834), (32, 67810), (33, 67807),

Gene: Nigel_90 Start: 67578, Stop: 67423, Start Num: 13

Candidate Starts for Nigel_90:

(10, 67659), (Start: 13 @67578 has 26 MA's), (15, 67566), (19, 67551), (22, 67533), (26, 67482), (28, 67473), (32, 67440), (33, 67437),

Gene: Poster_91 Start: 67949, Stop: 67794, Start Num: 13

Candidate Starts for Poster_91:

(Start: 13 @67949 has 26 MA's), (14, 67943), (15, 67937), (16, 67934), (18, 67925), (20, 67916), (24, 67865), (25, 67862), (29, 67835), (32, 67811), (33, 67808),

Gene: Prince_93 Start: 69154, Stop: 68999, Start Num: 13

Candidate Starts for Prince_93:

(11, 69235), (Start: 13 @69154 has 26 MA's), (15, 69142), (18, 69130), (19, 69127), (20, 69121), (21, 69118), (25, 69067), (29, 69040), (31, 69025), (33, 69013),

Gene: QueenPie_86 Start: 67819, Stop: 67664, Start Num: 13

Candidate Starts for QueenPie_86:

(8, 67936), (9, 67924), (12, 67849), (Start: 13 @67819 has 26 MA's), (15, 67807), (17, 67798), (18, 67795), (19, 67792), (20, 67786), (21, 67783), (23, 67744), (25, 67732), (29, 67705), (31, 67690), (33, 67678),

Gene: Quesadilla_93 Start: 68486, Stop: 68325, Start Num: 13

Candidate Starts for Quesadilla_93:

(3, 68822), (4, 68816), (5, 68729), (Start: 13 @68486 has 26 MA's), (23, 68405), (27, 68381),

Gene: RawrgerThat_91 Start: 68652, Stop: 68497, Start Num: 13

Candidate Starts for RawrgerThat_91:

(Start: 13 @68652 has 26 MA's), (15, 68640), (18, 68628), (19, 68625), (20, 68619), (21, 68616), (25, 68565), (29, 68538), (31, 68523), (33, 68511),

Gene: Stinger_90 Start: 67339, Stop: 67184, Start Num: 13

Candidate Starts for Stinger_90:

(12, 67369), (Start: 13 @67339 has 26 MA's), (16, 67324), (17, 67318), (22, 67294), (23, 67264), (25, 67252), (28, 67234), (33, 67198),

Gene: VioletZ_95 Start: 69261, Stop: 69106, Start Num: 13

Candidate Starts for VioletZ_95:

(11, 69342), (Start: 13 @69261 has 26 MA's), (15, 69249), (18, 69237), (19, 69234), (20, 69228), (21, 69225), (25, 69174), (29, 69147), (31, 69132), (33, 69120),

Gene: Waleliano_92 Start: 68908, Stop: 68753, Start Num: 13

Candidate Starts for Waleliano_92:

(11, 68989), (Start: 13 @68908 has 26 MA's), (15, 68896), (18, 68884), (19, 68881), (20, 68875), (23, 68833), (25, 68821), (29, 68794), (31, 68779), (33, 68767),

Gene: Xincheng_85 Start: 69024, Stop: 68869, Start Num: 13

Candidate Starts for Xincheng_85:

(Start: 13 @69024 has 26 MA's), (15, 69012), (18, 69000), (19, 68997), (20, 68991), (23, 68949), (24, 68940), (25, 68937), (29, 68910), (31, 68895), (33, 68883),

Gene: Zemanar_91 Start: 68925, Stop: 68770, Start Num: 13

Candidate Starts for Zemanar_91:

(7, 69108), (9, 69030), (Start: 13 @68925 has 26 MA's), (17, 68904), (19, 68898), (22, 68880), (25, 68838), (26, 68829), (28, 68820), (31, 68796), (33, 68784),

Gene: Zenteno07_6 Start: 1332, Stop: 1487, Start Num: 13

Candidate Starts for Zenteno07_6:

(12, 1296), (Start: 13 @1332 has 26 MA's), (15, 1344), (18, 1356), (20, 1365), (23, 1407), (27, 1431), (29, 1446), (30, 1452),