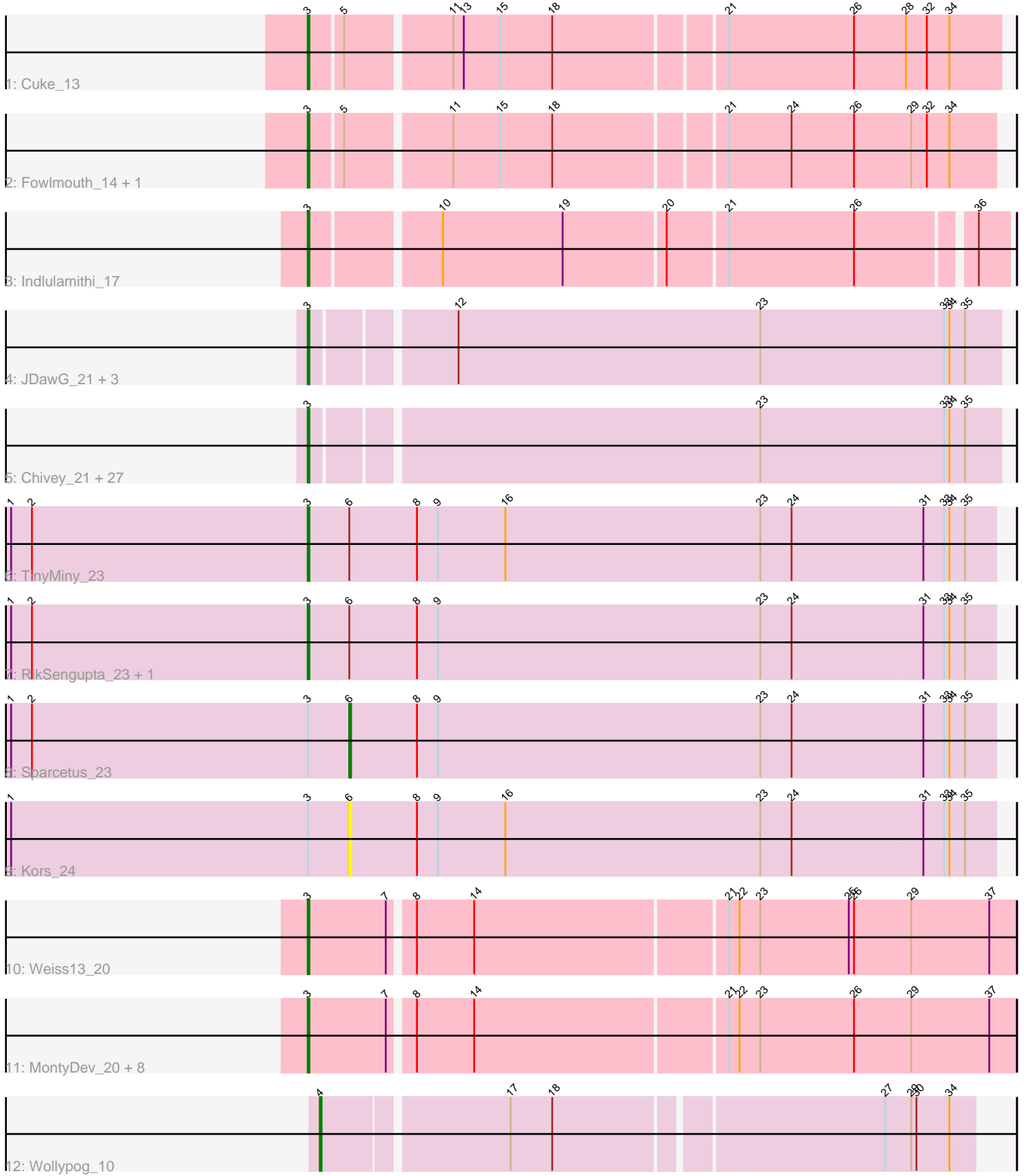


Pham 180559



Note: Tracks are now grouped by subcluster and scaled. Switching in subcluster is indicated by changes in track color. Track scale is now set by default to display the region 30 bp upstream of start 1 to 30 bp downstream of the last possible start. If this default region is judged to be packed too tightly with annotated starts, the track will be further scaled to only show that region of the ORF with annotated starts. This action will be indicated by adding "Zoomed" to the title. For starts, yellow indicates the location of called starts comprised solely of Glimmer/GeneMark auto-annotations, green indicates the location of called starts with at least 1 manual gene annotation.

Pham 180559 Report

This analysis was run 11/02/24 on database version 579.

Pham number 180559 has 52 members, 3 are drafts.

Phages represented in each track:

- Track 1 : Cuke_13
- Track 2 : Fowlmouth_14, MrMiyagi_14
- Track 3 : Indlulamithi_17
- Track 4 : JDawG_21, Crestdrop_21, Rie18_22, Hager_23
- Track 5 : Chivey_21, Krampus_22, Anakin_22, Karate_21, Aesir_21, Hiddenleaf_21, Potty_22, Rachella_22, Dauntless_21, DannyDe_21, Poultruss_21, Haunter_22, MortySmith_20, Tedro_22, JingleBells_21, Neptune_22, PhunaPhoke_22, Cybele_22, Kate_22, AnnaSerena_22, OverHedge_22, CoolCookie_22, Erudite_21, Snakehole_23, Pharpay_22, NarutoRun_22, FreddieHg_21, Gilda_22
- Track 6 : TinyMiny_23
- Track 7 : RikSengupta_23, Ajin_23
- Track 8 : Sparcetus_23
- Track 9 : Kors_24
- Track 10 : Weiss13_20
- Track 11 : MontyDev_20, Riparian_20, Candle_20, Nilo_21, Zenon_21, Send513_20, Papyrus_20, Rope_20, Yelo_20
- Track 12 : Wollypog_10

Summary of Final Annotations (See graph section above for start numbers):

The start number called the most often in the published annotations is 3, it was called in 47 of the 49 non-draft genes in the pham.

Genes that call this "Most Annotated" start:

- Aesir_21, Ajin_23, Anakin_22, AnnaSerena_22, Candle_20, Chivey_21, CoolCookie_22, Crestdrop_21, Cuke_13, Cybele_22, DannyDe_21, Dauntless_21, Erudite_21, Fowlmouth_14, FreddieHg_21, Gilda_22, Hager_23, Haunter_22, Hiddenleaf_21, Indlulamithi_17, JDawG_21, JingleBells_21, Karate_21, Kate_22, Krampus_22, MontyDev_20, MortySmith_20, MrMiyagi_14, NarutoRun_22, Neptune_22, Nilo_21, OverHedge_22, Papyrus_20, Pharpay_22, PhunaPhoke_22, Potty_22, Poultruss_21, Rachella_22, Rie18_22, RikSengupta_23, Riparian_20, Rope_20, Send513_20, Snakehole_23, Tedro_22, TinyMiny_23, Weiss13_20, Yelo_20, Zenon_21,

Genes that have the "Most Annotated" start but do not call it:

- Kors_24, Sparcetus_23,

Genes that do not have the "Most Annotated" start:

- Wollypog_10,

Summary by start number:

Start 3:

- Found in 51 of 52 (98.1%) of genes in pham
- Manual Annotations of this start: 47 of 49
- Called 96.1% of time when present
- Phage (with cluster) where this start called: Aesir_21 (EF), Ajin_23 (EF), Anakin_22 (EF), AnnaSerena_22 (EF), Candle_20 (R), Chivey_21 (EF), CoolCookie_22 (EF), Crestdrop_21 (EF), Cuke_13 (AC), Cybele_22 (EF), DannyDe_21 (EF), Dauntless_21 (EF), Erudite_21 (EF), Fowlmouth_14 (AC), FreddieHg_21 (EF), Gilda_22 (EF), Hager_23 (EF), Haunter_22 (EF), Hiddenleaf_21 (EF), Indlulamithi_17 (AC), JDawG_21 (EF), JingleBells_21 (EF), Karate_21 (EF), Kate_22 (EF), Krampus_22 (EF), MontyDev_20 (R), MortySmith_20 (EF), MrMiyagi_14 (AC), NarutoRun_22 (EF), Neptune_22 (EF), Nilo_21 (R), OverHedge_22 (EF), Papyrus_20 (R), Pharpay_22 (EF), PhunaPhoke_22 (EF), Potty_22 (EF), Poultruss_21 (EF), Rachella_22 (EF), Rie18_22 (EF), RikSengupta_23 (EF), Riparian_20 (R), Rope_20 (R), Send513_20 (R), Snakehole_23 (EF), Tedro_22 (EF), TinyMiny_23 (EF), Weiss13_20 (R), Yelo_20 (R), Zenon_21 (R),

Start 4:

- Found in 1 of 52 (1.9%) of genes in pham
- Manual Annotations of this start: 1 of 49
- Called 100.0% of time when present
- Phage (with cluster) where this start called: Wollypog_10 (singleton),

Start 6:

- Found in 5 of 52 (9.6%) of genes in pham
- Manual Annotations of this start: 1 of 49
- Called 40.0% of time when present
- Phage (with cluster) where this start called: Kors_24 (EF), Sparcetus_23 (EF),

Summary by clusters:

There are 4 clusters represented in this pham: AC, R, singleton, EF,

Info for manual annotations of cluster AC:

- Start number 3 was manually annotated 4 times for cluster AC.

Info for manual annotations of cluster EF:

- Start number 3 was manually annotated 34 times for cluster EF.
- Start number 6 was manually annotated 1 time for cluster EF.

Info for manual annotations of cluster R:

- Start number 3 was manually annotated 9 times for cluster R.

Gene Information:

Gene: Aesir_21 Start: 11798, Stop: 12184, Start Num: 3

Candidate Starts for Aesir_21:

(Start: 3 @11798 has 47 MA's), (23, 12047), (33, 12152), (34, 12155), (35, 12164),

Gene: Ajin_23 Start: 11984, Stop: 12379, Start Num: 3

Candidate Starts for Ajin_23:

(1, 11813), (2, 11825), (Start: 3 @11984 has 47 MA's), (Start: 6 @12008 has 1 MA's), (8, 12047), (9, 12059), (23, 12245), (24, 12263), (31, 12338), (33, 12350), (34, 12353), (35, 12362),

Gene: Anakin_22 Start: 12008, Stop: 12394, Start Num: 3

Candidate Starts for Anakin_22:

(Start: 3 @12008 has 47 MA's), (23, 12257), (33, 12362), (34, 12365), (35, 12374),

Gene: AnnaSerena_22 Start: 12017, Stop: 12403, Start Num: 3

Candidate Starts for AnnaSerena_22:

(Start: 3 @12017 has 47 MA's), (23, 12266), (33, 12371), (34, 12374), (35, 12383),

Gene: Candle_20 Start: 13524, Stop: 13919, Start Num: 3

Candidate Starts for Candle_20:

(Start: 3 @13524 has 47 MA's), (7, 13569), (8, 13581), (14, 13614), (21, 13755), (22, 13761), (23, 13773), (26, 13827), (29, 13860), (37, 13905),

Gene: Chivey_21 Start: 11210, Stop: 11596, Start Num: 3

Candidate Starts for Chivey_21:

(Start: 3 @11210 has 47 MA's), (23, 11459), (33, 11564), (34, 11567), (35, 11576),

Gene: CoolCookie_22 Start: 12015, Stop: 12401, Start Num: 3

Candidate Starts for CoolCookie_22:

(Start: 3 @12015 has 47 MA's), (23, 12264), (33, 12369), (34, 12372), (35, 12381),

Gene: Crestdrop_21 Start: 11084, Stop: 11470, Start Num: 3

Candidate Starts for Crestdrop_21:

(Start: 3 @11084 has 47 MA's), (12, 11159), (23, 11333), (33, 11438), (34, 11441), (35, 11450),

Gene: Cuke_13 Start: 8734, Stop: 9114, Start Num: 3

Candidate Starts for Cuke_13:

(Start: 3 @8734 has 47 MA's), (5, 8752), (11, 8809), (13, 8815), (15, 8836), (18, 8866), (21, 8959), (26, 9031), (28, 9061), (32, 9073), (34, 9085),

Gene: Cybele_22 Start: 11985, Stop: 12371, Start Num: 3

Candidate Starts for Cybele_22:

(Start: 3 @11985 has 47 MA's), (23, 12234), (33, 12339), (34, 12342), (35, 12351),

Gene: DannyDe_21 Start: 11202, Stop: 11588, Start Num: 3

Candidate Starts for DannyDe_21:

(Start: 3 @11202 has 47 MA's), (23, 11451), (33, 11556), (34, 11559), (35, 11568),

Gene: Dauntless_21 Start: 11727, Stop: 12113, Start Num: 3

Candidate Starts for Dauntless_21:

(Start: 3 @11727 has 47 MA's), (23, 11976), (33, 12081), (34, 12084), (35, 12093),

Gene: Erudite_21 Start: 11727, Stop: 12113, Start Num: 3

Candidate Starts for Erudite_21:

(Start: 3 @11727 has 47 MA's), (23, 11976), (33, 12081), (34, 12084), (35, 12093),

Gene: Fowlmouth_14 Start: 8905, Stop: 9282, Start Num: 3

Candidate Starts for Fowlmouth_14:

(Start: 3 @8905 has 47 MA's), (5, 8923), (11, 8980), (15, 9007), (18, 9037), (21, 9130), (24, 9166), (26, 9202), (29, 9235), (32, 9244), (34, 9256),

Gene: FreddieHg_21 Start: 11226, Stop: 11612, Start Num: 3

Candidate Starts for FreddieHg_21:

(Start: 3 @11226 has 47 MA's), (23, 11475), (33, 11580), (34, 11583), (35, 11592),

Gene: Gilda_22 Start: 12009, Stop: 12395, Start Num: 3

Candidate Starts for Gilda_22:

(Start: 3 @12009 has 47 MA's), (23, 12258), (33, 12363), (34, 12366), (35, 12375),

Gene: Hager_23 Start: 11580, Stop: 11966, Start Num: 3

Candidate Starts for Hager_23:

(Start: 3 @11580 has 47 MA's), (12, 11655), (23, 11829), (33, 11934), (34, 11937), (35, 11946),

Gene: Haunter_22 Start: 11422, Stop: 11808, Start Num: 3

Candidate Starts for Haunter_22:

(Start: 3 @11422 has 47 MA's), (23, 11671), (33, 11776), (34, 11779), (35, 11788),

Gene: Hiddenleaf_21 Start: 11210, Stop: 11596, Start Num: 3

Candidate Starts for Hiddenleaf_21:

(Start: 3 @11210 has 47 MA's), (23, 11459), (33, 11564), (34, 11567), (35, 11576),

Gene: Indlulamithi_17 Start: 10995, Stop: 11375, Start Num: 3

Candidate Starts for Indlulamithi_17:

(Start: 3 @10995 has 47 MA's), (10, 11064), (19, 11133), (20, 11190), (21, 11223), (26, 11295), (36, 11358),

Gene: JDawG_21 Start: 11792, Stop: 12178, Start Num: 3

Candidate Starts for JDawG_21:

(Start: 3 @11792 has 47 MA's), (12, 11867), (23, 12041), (33, 12146), (34, 12149), (35, 12158),

Gene: JingleBells_21 Start: 11291, Stop: 11677, Start Num: 3

Candidate Starts for JingleBells_21:

(Start: 3 @11291 has 47 MA's), (23, 11540), (33, 11645), (34, 11648), (35, 11657),

Gene: Karate_21 Start: 11430, Stop: 11816, Start Num: 3

Candidate Starts for Karate_21:

(Start: 3 @11430 has 47 MA's), (23, 11679), (33, 11784), (34, 11787), (35, 11796),

Gene: Kate_22 Start: 12017, Stop: 12403, Start Num: 3

Candidate Starts for Kate_22:

(Start: 3 @12017 has 47 MA's), (23, 12266), (33, 12371), (34, 12374), (35, 12383),

Gene: Kors_24 Start: 12054, Stop: 12425, Start Num: 6

Candidate Starts for Kors_24:

(1, 11859), (Start: 3 @12030 has 47 MA's), (Start: 6 @12054 has 1 MA's), (8, 12093), (9, 12105), (16, 12144), (23, 12291), (24, 12309), (31, 12384), (33, 12396), (34, 12399), (35, 12408),

Gene: Krampus_22 Start: 12015, Stop: 12401, Start Num: 3

Candidate Starts for Krampus_22:

(Start: 3 @12015 has 47 MA's), (23, 12264), (33, 12369), (34, 12372), (35, 12381),

Gene: MontyDev_20 Start: 13182, Stop: 13577, Start Num: 3

Candidate Starts for MontyDev_20:

(Start: 3 @13182 has 47 MA's), (7, 13227), (8, 13239), (14, 13272), (21, 13413), (22, 13419), (23, 13431), (26, 13485), (29, 13518), (37, 13563),

Gene: MortySmith_20 Start: 11189, Stop: 11575, Start Num: 3

Candidate Starts for MortySmith_20:

(Start: 3 @11189 has 47 MA's), (23, 11438), (33, 11543), (34, 11546), (35, 11555),

Gene: MrMiyagi_14 Start: 8905, Stop: 9282, Start Num: 3

Candidate Starts for MrMiyagi_14:

(Start: 3 @8905 has 47 MA's), (5, 8923), (11, 8980), (15, 9007), (18, 9037), (21, 9130), (24, 9166), (26, 9202), (29, 9235), (32, 9244), (34, 9256),

Gene: NarutoRun_22 Start: 12008, Stop: 12394, Start Num: 3

Candidate Starts for NarutoRun_22:

(Start: 3 @12008 has 47 MA's), (23, 12257), (33, 12362), (34, 12365), (35, 12374),

Gene: Neptune_22 Start: 11985, Stop: 12371, Start Num: 3

Candidate Starts for Neptune_22:

(Start: 3 @11985 has 47 MA's), (23, 12234), (33, 12339), (34, 12342), (35, 12351),

Gene: Nilo_21 Start: 13521, Stop: 13916, Start Num: 3

Candidate Starts for Nilo_21:

(Start: 3 @13521 has 47 MA's), (7, 13566), (8, 13578), (14, 13611), (21, 13752), (22, 13758), (23, 13770), (26, 13824), (29, 13857), (37, 13902),

Gene: OverHedge_22 Start: 11982, Stop: 12368, Start Num: 3

Candidate Starts for OverHedge_22:

(Start: 3 @11982 has 47 MA's), (23, 12231), (33, 12336), (34, 12339), (35, 12348),

Gene: Papyrus_20 Start: 13183, Stop: 13578, Start Num: 3

Candidate Starts for Papyrus_20:

(Start: 3 @13183 has 47 MA's), (7, 13228), (8, 13240), (14, 13273), (21, 13414), (22, 13420), (23, 13432), (26, 13486), (29, 13519), (37, 13564),

Gene: Pharpay_22 Start: 12030, Stop: 12416, Start Num: 3

Candidate Starts for Pharpay_22:

(Start: 3 @12030 has 47 MA's), (23, 12279), (33, 12384), (34, 12387), (35, 12396),

Gene: PhunaPhoke_22 Start: 12003, Stop: 12389, Start Num: 3

Candidate Starts for PhunaPhoke_22:

(Start: 3 @12003 has 47 MA's), (23, 12252), (33, 12357), (34, 12360), (35, 12369),

Gene: Potty_22 Start: 12008, Stop: 12394, Start Num: 3

Candidate Starts for Potty_22:

(Start: 3 @12008 has 47 MA's), (23, 12257), (33, 12362), (34, 12365), (35, 12374),

Gene: Poultruss_21 Start: 11781, Stop: 12167, Start Num: 3

Candidate Starts for Poultruss_21:

(Start: 3 @11781 has 47 MA's), (23, 12030), (33, 12135), (34, 12138), (35, 12147),

Gene: Rachella_22 Start: 12011, Stop: 12397, Start Num: 3

Candidate Starts for Rachella_22:

(Start: 3 @12011 has 47 MA's), (23, 12260), (33, 12365), (34, 12368), (35, 12377),

Gene: Rie18_22 Start: 11362, Stop: 11748, Start Num: 3

Candidate Starts for Rie18_22:

(Start: 3 @11362 has 47 MA's), (12, 11437), (23, 11611), (33, 11716), (34, 11719), (35, 11728),

Gene: RikSengupta_23 Start: 12067, Stop: 12462, Start Num: 3

Candidate Starts for RikSengupta_23:

(1, 11896), (2, 11908), (Start: 3 @12067 has 47 MA's), (Start: 6 @12091 has 1 MA's), (8, 12130), (9, 12142), (23, 12328), (24, 12346), (31, 12421), (33, 12433), (34, 12436), (35, 12445),

Gene: Riparian_20 Start: 12982, Stop: 13377, Start Num: 3

Candidate Starts for Riparian_20:

(Start: 3 @12982 has 47 MA's), (7, 13027), (8, 13039), (14, 13072), (21, 13213), (22, 13219), (23, 13231), (26, 13285), (29, 13318), (37, 13363),

Gene: Rope_20 Start: 13174, Stop: 13569, Start Num: 3

Candidate Starts for Rope_20:

(Start: 3 @13174 has 47 MA's), (7, 13219), (8, 13231), (14, 13264), (21, 13405), (22, 13411), (23, 13423), (26, 13477), (29, 13510), (37, 13555),

Gene: Send513_20 Start: 13524, Stop: 13919, Start Num: 3

Candidate Starts for Send513_20:

(Start: 3 @13524 has 47 MA's), (7, 13569), (8, 13581), (14, 13614), (21, 13755), (22, 13761), (23, 13773), (26, 13827), (29, 13860), (37, 13905),

Gene: Snakehole_23 Start: 11307, Stop: 11693, Start Num: 3

Candidate Starts for Snakehole_23:

(Start: 3 @11307 has 47 MA's), (23, 11556), (33, 11661), (34, 11664), (35, 11673),

Gene: Sparcetus_23 Start: 11970, Stop: 12341, Start Num: 6

Candidate Starts for Sparcetus_23:

(1, 11775), (2, 11787), (Start: 3 @11946 has 47 MA's), (Start: 6 @11970 has 1 MA's), (8, 12009), (9, 12021), (23, 12207), (24, 12225), (31, 12300), (33, 12312), (34, 12315), (35, 12324),

Gene: Tedro_22 Start: 11481, Stop: 11867, Start Num: 3

Candidate Starts for Tedro_22:

(Start: 3 @11481 has 47 MA's), (23, 11730), (33, 11835), (34, 11838), (35, 11847),

Gene: TinyMiny_23 Start: 11965, Stop: 12360, Start Num: 3

Candidate Starts for TinyMiny_23:

(1, 11794), (2, 11806), (Start: 3 @11965 has 47 MA's), (Start: 6 @11989 has 1 MA's), (8, 12028), (9, 12040), (16, 12079), (23, 12226), (24, 12244), (31, 12319), (33, 12331), (34, 12334), (35, 12343),

Gene: Weiss13_20 Start: 13214, Stop: 13609, Start Num: 3

Candidate Starts for Weiss13_20:

(Start: 3 @13214 has 47 MA's), (7, 13259), (8, 13271), (14, 13304), (21, 13445), (22, 13451), (23, 13463), (25, 13514), (26, 13517), (29, 13550), (37, 13595),

Gene: Wollypog_10 Start: 8603, Stop: 8959, Start Num: 4

Candidate Starts for Wollypog_10:

(Start: 4 @8603 has 1 MA's), (17, 8705), (18, 8729), (27, 8909), (29, 8924), (30, 8927), (34, 8945),

Gene: Yelo_20 Start: 13524, Stop: 13919, Start Num: 3

Candidate Starts for Yelo_20:

(Start: 3 @13524 has 47 MA's), (7, 13569), (8, 13581), (14, 13614), (21, 13755), (22, 13761), (23, 13773), (26, 13827), (29, 13860), (37, 13905),

Gene: Zenon_21 Start: 13526, Stop: 13921, Start Num: 3

Candidate Starts for Zenon_21:

(Start: 3 @13526 has 47 MA's), (7, 13571), (8, 13583), (14, 13616), (21, 13757), (22, 13763), (23, 13775), (26, 13829), (29, 13862), (37, 13907),