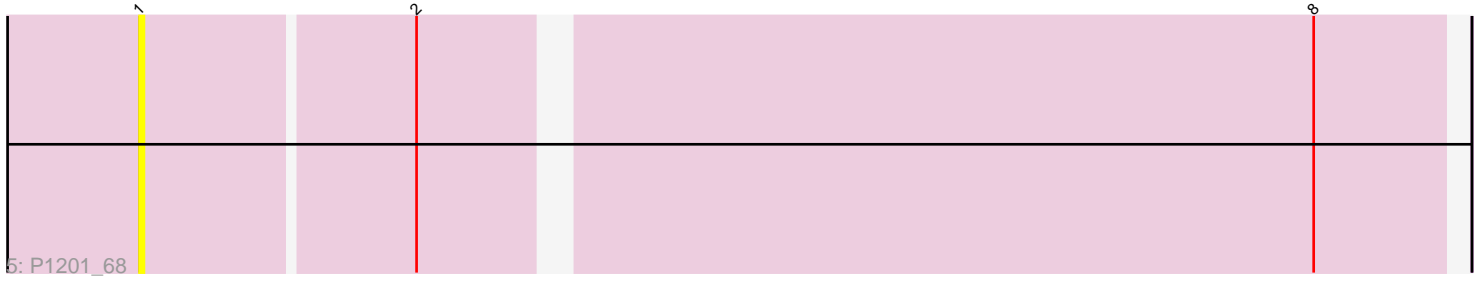
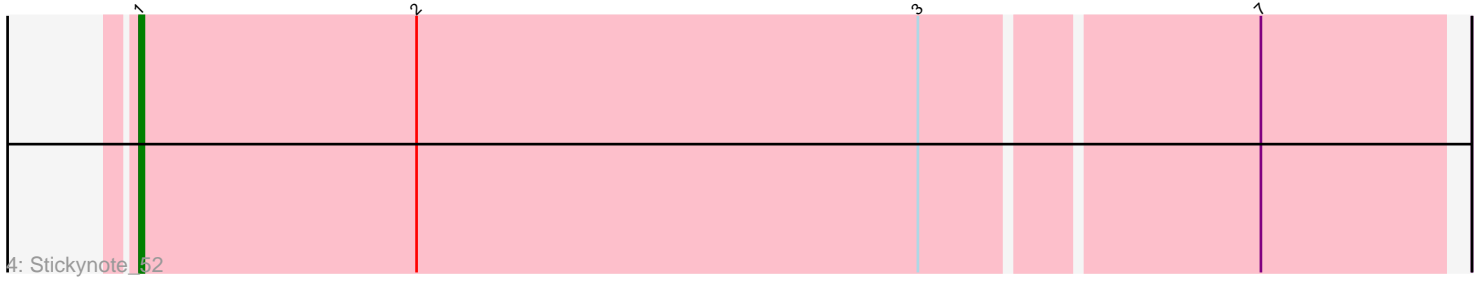
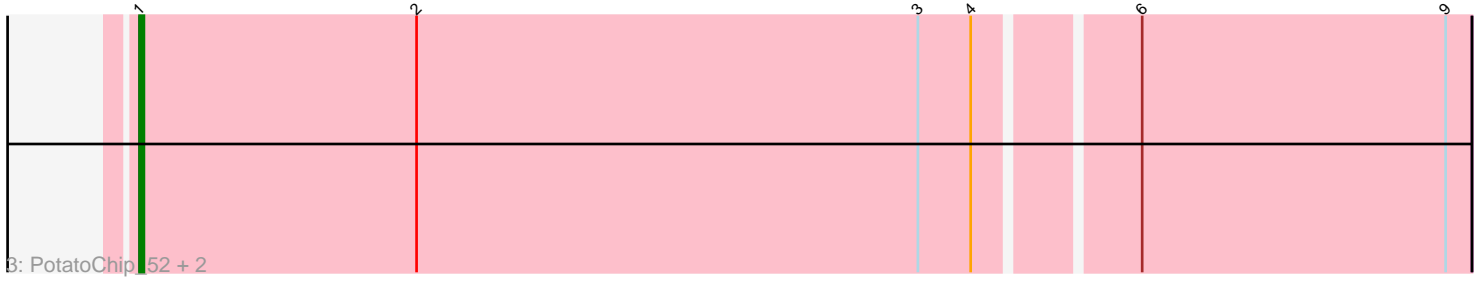
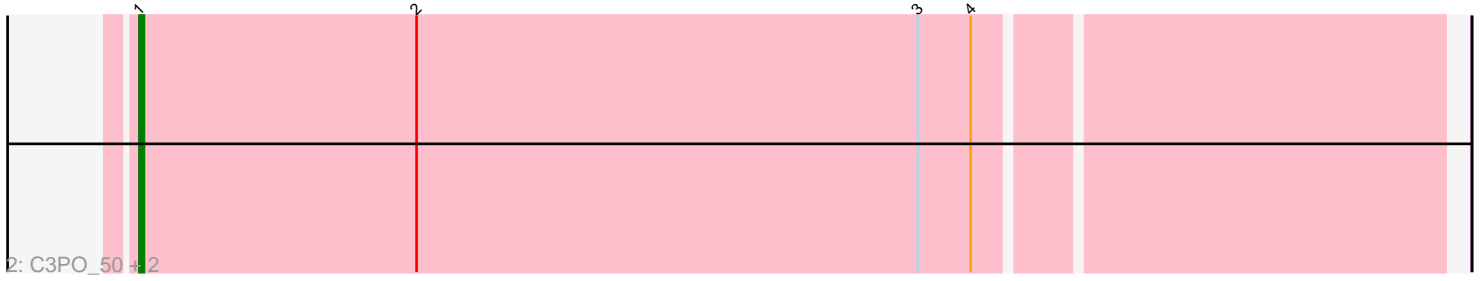
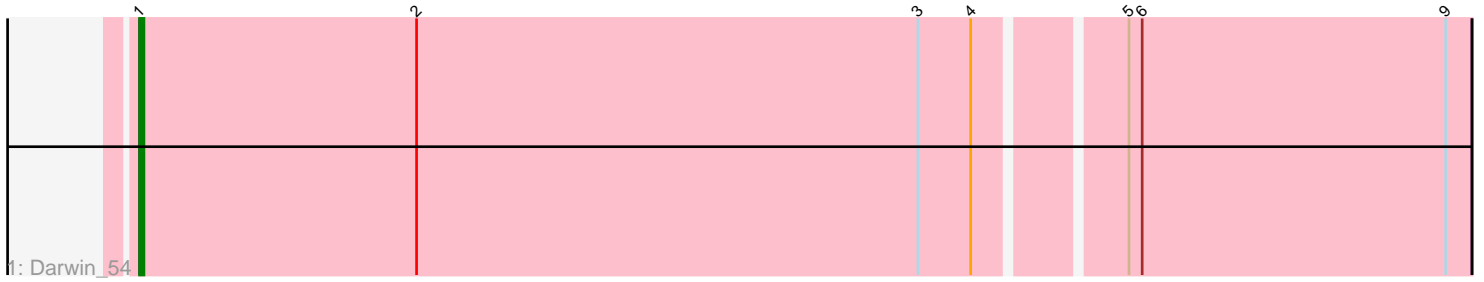


Pham 181022



Note: Tracks are now grouped by subcluster and scaled. Switching in subcluster is indicated by changes in track color. Track scale is now set by default to display the region 30 bp upstream of start 1 to 30 bp downstream of the last possible start. If this default region is judged to be packed too tightly with annotated starts, the track will be further scaled to only show that region of the ORF with annotated starts. This action will be indicated by adding "Zoomed" to the title. For starts, yellow indicates the location of called starts comprised solely of Glimmer/GeneMark auto-annotations, green indicates the location of called starts with at least 1 manual gene annotation.

## Pham 181022 Report

This analysis was run 11/02/24 on database version 579.

Pham number 181022 has 9 members, 1 are drafts.

Phages represented in each track:

- Track 1 : Darwin\_54
- Track 2 : C3PO\_50, Kimchi1738\_51, Cruella\_50
- Track 3 : PotatoChip\_52, PeteyPab\_51, Zion\_52
- Track 4 : Stickynote\_52
- Track 5 : P1201\_68

### ***Summary of Final Annotations (See graph section above for start numbers):***

The start number called the most often in the published annotations is 1, it was called in 8 of the 8 non-draft genes in the pham.

Genes that call this "Most Annotated" start:

- C3PO\_50, Cruella\_50, Darwin\_54, Kimchi1738\_51, P1201\_68, PeteyPab\_51, PotatoChip\_52, Stickynote\_52, Zion\_52,

Genes that have the "Most Annotated" start but do not call it:

- 

Genes that do not have the "Most Annotated" start:

- 

### **Summary by start number:**

Start 1:

- Found in 9 of 9 ( 100.0% ) of genes in pham
- Manual Annotations of this start: 8 of 8
- Called 100.0% of time when present
- Phage (with cluster) where this start called: C3PO\_50 (EN), Cruella\_50 (EN), Darwin\_54 (EN), Kimchi1738\_51 (EN), P1201\_68 (singleton), PeteyPab\_51 (EN), PotatoChip\_52 (EN), Stickynote\_52 (EN), Zion\_52 (EN),

### **Summary by clusters:**

There are 2 clusters represented in this pham: singleton, EN,

Info for manual annotations of cluster EN:

•Start number 1 was manually annotated 8 times for cluster EN.

**Gene Information:**

Gene: C3PO\_50 Start: 43697, Stop: 43407, Start Num: 1

Candidate Starts for C3PO\_50:

(Start: 1 @43697 has 8 MA's), (2, 43634), (3, 43520), (4, 43508),

Gene: Cruella\_50 Start: 43697, Stop: 43407, Start Num: 1

Candidate Starts for Cruella\_50:

(Start: 1 @43697 has 8 MA's), (2, 43634), (3, 43520), (4, 43508),

Gene: Darwin\_54 Start: 43178, Stop: 42882, Start Num: 1

Candidate Starts for Darwin\_54:

(Start: 1 @43178 has 8 MA's), (2, 43115), (3, 43001), (4, 42989), (5, 42959), (6, 42956), (9, 42887),

Gene: Kimchi1738\_51 Start: 43674, Stop: 43384, Start Num: 1

Candidate Starts for Kimchi1738\_51:

(Start: 1 @43674 has 8 MA's), (2, 43611), (3, 43497), (4, 43485),

Gene: P1201\_68 Start: 51515, Stop: 51231, Start Num: 1

Candidate Starts for P1201\_68:

(Start: 1 @51515 has 8 MA's), (2, 51455), (8, 51260),

Gene: PeteyPab\_51 Start: 43958, Stop: 43662, Start Num: 1

Candidate Starts for PeteyPab\_51:

(Start: 1 @43958 has 8 MA's), (2, 43895), (3, 43781), (4, 43769), (6, 43736), (9, 43667),

Gene: PotatoChip\_52 Start: 43960, Stop: 43664, Start Num: 1

Candidate Starts for PotatoChip\_52:

(Start: 1 @43960 has 8 MA's), (2, 43897), (3, 43783), (4, 43771), (6, 43738), (9, 43669),

Gene: Stickynote\_52 Start: 43964, Stop: 43674, Start Num: 1

Candidate Starts for Stickynote\_52:

(Start: 1 @43964 has 8 MA's), (2, 43901), (3, 43787), (7, 43715),

Gene: Zion\_52 Start: 43958, Stop: 43662, Start Num: 1

Candidate Starts for Zion\_52:

(Start: 1 @43958 has 8 MA's), (2, 43895), (3, 43781), (4, 43769), (6, 43736), (9, 43667),