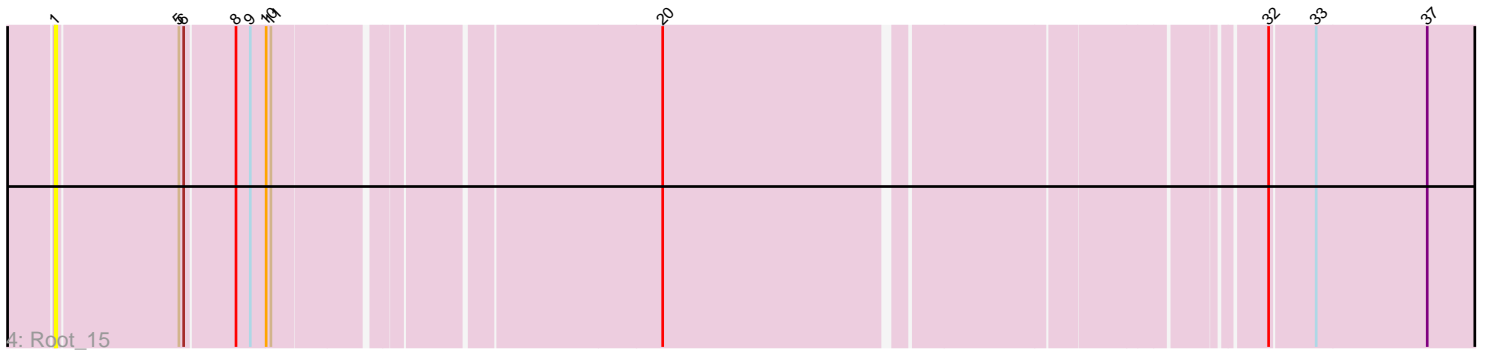
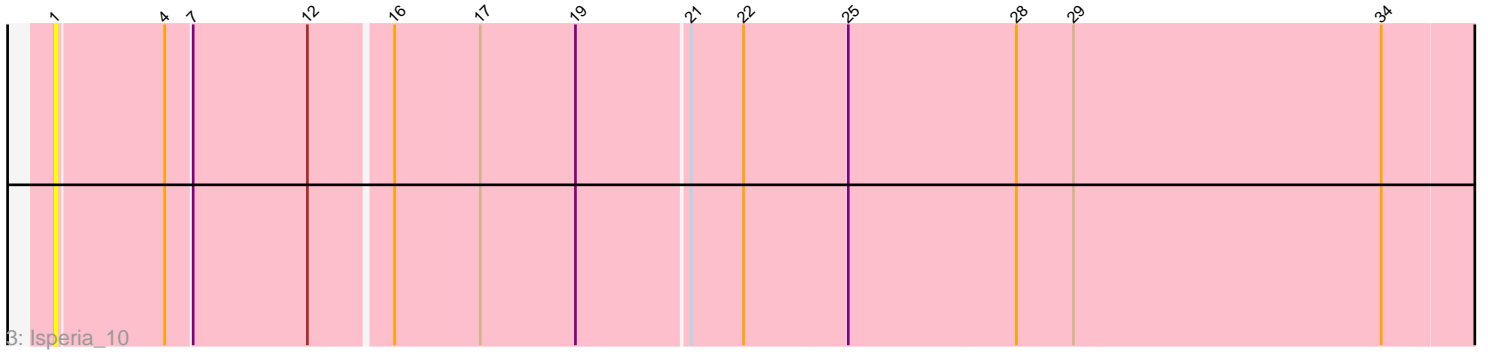
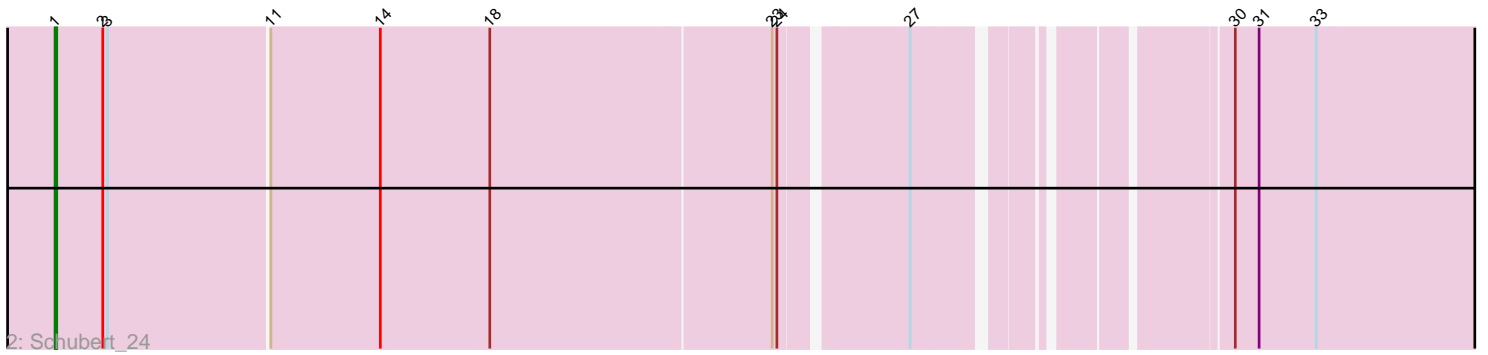
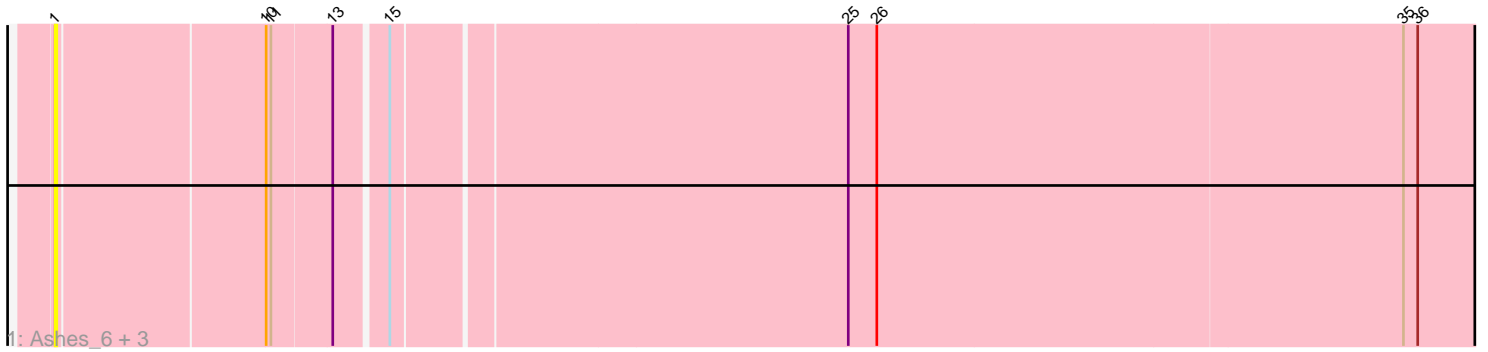


Pham 181152



Note: Tracks are now grouped by subcluster and scaled. Switching in subcluster is indicated by changes in track color. Track scale is now set by default to display the region 30 bp upstream of start 1 to 30 bp downstream of the last possible start. If this default region is judged to be packed too tightly with annotated starts, the track will be further scaled to only show that region of the ORF with annotated starts. This action will be indicated by adding "Zoomed" to the title. For starts, yellow indicates the location of called starts comprised solely of Glimmer/GeneMark auto-annotations, green indicates the location of called starts with at least 1 manual gene annotation.

## Pham 181152 Report

This analysis was run 11/02/24 on database version 579.

Pham number 181152 has 7 members, 6 are drafts.

Phages represented in each track:

- Track 1 : Ashes\_6, Mysterium\_5, Moss\_5, Halsey\_5
- Track 2 : Schubert\_24
- Track 3 : Isperia\_10
- Track 4 : Root\_15

### ***Summary of Final Annotations (See graph section above for start numbers):***

The start number called the most often in the published annotations is 1, it was called in 1 of the 1 non-draft genes in the pham.

Genes that call this "Most Annotated" start:

- Ashes\_6, Halsey\_5, Isperia\_10, Moss\_5, Mysterium\_5, Root\_15, Schubert\_24,

Genes that have the "Most Annotated" start but do not call it:

- 

Genes that do not have the "Most Annotated" start:

- 

### **Summary by start number:**

Start 1:

- Found in 7 of 7 ( 100.0% ) of genes in pham
- Manual Annotations of this start: 1 of 1
- Called 100.0% of time when present
- Phage (with cluster) where this start called: Ashes\_6 (AZ5), Halsey\_5 (AZ5), Isperia\_10 (GJ), Moss\_5 (AZ5), Mysterium\_5 (AZ5), Root\_15 (singleton), Schubert\_24 (EA8),

### **Summary by clusters:**

There are 4 clusters represented in this pham: EA8, singleton, AZ5, GJ,

Info for manual annotations of cluster EA8:

•Start number 1 was manually annotated 1 time for cluster EA8.

**Gene Information:**

Gene: Ashes\_6 Start: 4695, Stop: 5714, Start Num: 1

Candidate Starts for Ashes\_6:

(Start: 1 @4695 has 1 MA's), (10, 4821), (11, 4824), (13, 4860), (15, 4890), (25, 5166), (26, 5184), (35, 5511), (36, 5520),

Gene: Halsey\_5 Start: 4695, Stop: 5714, Start Num: 1

Candidate Starts for Halsey\_5:

(Start: 1 @4695 has 1 MA's), (10, 4821), (11, 4824), (13, 4860), (15, 4890), (25, 5166), (26, 5184), (35, 5511), (36, 5520),

Gene: Isperia\_10 Start: 6542, Stop: 7450, Start Num: 1

Candidate Starts for Isperia\_10:

(Start: 1 @6542 has 1 MA's), (4, 6608), (7, 6623), (12, 6695), (16, 6743), (17, 6797), (19, 6857), (21, 6926), (22, 6959), (25, 7022), (28, 7127), (29, 7163), (34, 7355),

Gene: Moss\_5 Start: 4695, Stop: 5714, Start Num: 1

Candidate Starts for Moss\_5:

(Start: 1 @4695 has 1 MA's), (10, 4821), (11, 4824), (13, 4860), (15, 4890), (25, 5166), (26, 5184), (35, 5511), (36, 5520),

Gene: Mysterium\_5 Start: 4695, Stop: 5714, Start Num: 1

Candidate Starts for Mysterium\_5:

(Start: 1 @4695 has 1 MA's), (10, 4821), (11, 4824), (13, 4860), (15, 4890), (25, 5166), (26, 5184), (35, 5511), (36, 5520),

Gene: Root\_15 Start: 11157, Stop: 12008, Start Num: 1

Candidate Starts for Root\_15:

(Start: 1 @11157 has 1 MA's), (5, 11232), (6, 11235), (8, 11265), (9, 11274), (10, 11283), (11, 11286), (20, 11508), (32, 11853), (33, 11880), (37, 11949),

Gene: Schubert\_24 Start: 18827, Stop: 19690, Start Num: 1

Candidate Starts for Schubert\_24:

(Start: 1 @18827 has 1 MA's), (2, 18857), (3, 18860), (11, 18959), (14, 19028), (18, 19097), (23, 19271), (24, 19274), (27, 19346), (30, 19511), (31, 19526), (33, 19562),