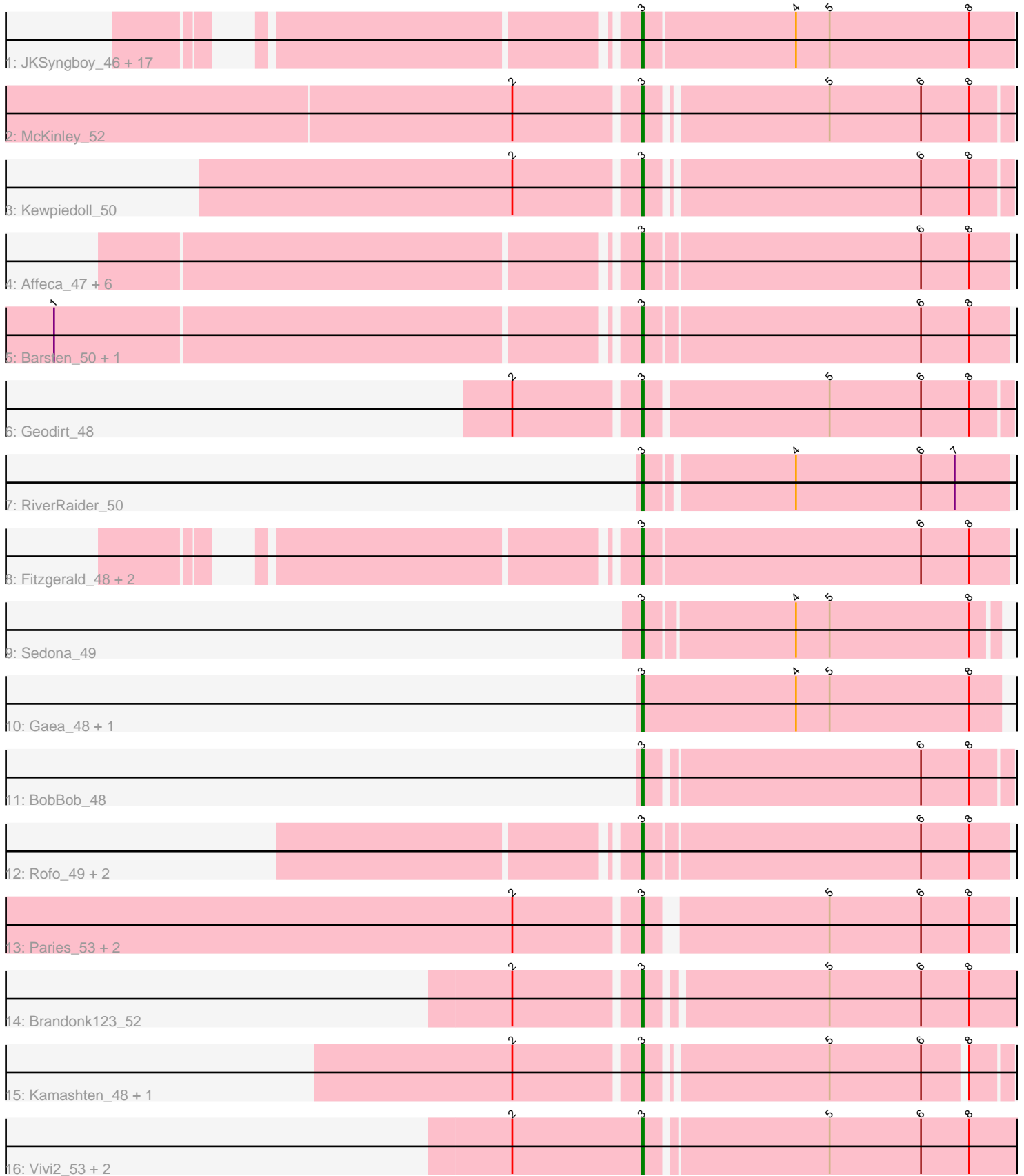


Pham 182332



Note: Tracks are now grouped by subcluster and scaled. Switching in subcluster is indicated by changes in track color. Track scale is now set by default to display the region 30 bp upstream of start 1 to 30 bp downstream of the last possible start. If this default region is judged to be packed too tightly with annotated starts, the track will be further scaled to only show that region of the ORF with annotated starts. This action will be indicated by adding "Zoomed" to the title. For starts, yellow indicates the location of called starts comprised solely of Glimmer/GeneMark auto-annotations, green indicates the location of called starts with at least 1 manual gene annotation.

Pham 182332 Report

This analysis was run 11/02/24 on database version 579.

Pham number 182332 has 50 members, 8 are drafts.

Phages represented in each track:

- Track 1 : JKSyngboy_46, Saronaya_48, Baddon_48, SchottB_47, Tangerine_48, Bibwit_47, Baumdotcom_47, Derg_46, StorminNorm_48, Gustavo_48, Kroos_49, Ashertheman_49, Flatwoods_49, Tycho_48, Bizzy_49, LilHam_46, Ribeye_49, YorkOnyx_49
- Track 2 : McKinley_52
- Track 3 : Kewpiedoll_50
- Track 4 : Affeca_47, Sitar_49, Lennon_49, Ailee_46, Keitabear_49, Shivanishola_49, Angelicage_47
- Track 5 : Barsten_50, ChadMasterC_50
- Track 6 : Geodirt_48
- Track 7 : RiverRaider_50
- Track 8 : Fitzgerald_48, MoontowerMania_49, Sanjuju_48
- Track 9 : Sedona_49
- Track 10 : Gaea_48, Kwobi_49
- Track 11 : BobBob_48
- Track 12 : Rofo_49, Charming_50, Tangent_50
- Track 13 : Paries_53, Nordenberg_45, Galadriel_50
- Track 14 : Brandonk123_52
- Track 15 : Kamashten_48, Thing3_48
- Track 16 : Vivi2_53, Fosterous_48, Love_54

Summary of Final Annotations (See graph section above for start numbers):

The start number called the most often in the published annotations is 3, it was called in 42 of the 42 non-draft genes in the pham.

Genes that call this "Most Annotated" start:

- Affeca_47, Ailee_46, Angelicage_47, Ashertheman_49, Baddon_48, Barsten_50, Baumdotcom_47, Bibwit_47, Bizzy_49, BobBob_48, Brandonk123_52, ChadMasterC_50, Charming_50, Derg_46, Fitzgerald_48, Flatwoods_49, Fosterous_48, Gaea_48, Galadriel_50, Geodirt_48, Gustavo_48, JKSyngboy_46, Kamashten_48, Keitabear_49, Kewpiedoll_50, Kroos_49, Kwobi_49, Lennon_49, LilHam_46, Love_54, McKinley_52, MoontowerMania_49, Nordenberg_45, Paries_53, Ribeye_49, RiverRaider_50, Rofo_49, Sanjuju_48, Saronaya_48,

SchottB_47, Sedona_49, Shivanishola_49, Sitar_49, StorminNorm_48, Tangent_50, Tangerine_48, Thing3_48, Tycho_48, Vivi2_53, YorkOnyx_49,

Genes that have the "Most Annotated" start but do not call it:

-

Genes that do not have the "Most Annotated" start:

-

Summary by start number:

Start 3:

- Found in 50 of 50 (100.0%) of genes in pham
- Manual Annotations of this start: 42 of 42
- Called 100.0% of time when present
- Phage (with cluster) where this start called: Affeca_47 (DE1), Ailee_46 (DE1), Angelicage_47 (DE1), Ashertheman_49 (DE1), Baddon_48 (DE1), Barsten_50 (DE1), Baumdotcom_47 (DE1), Bibwit_47 (DE1), Bizzy_49 (DE1), BobBob_48 (DE1), Brandonk123_52 (DE1), ChadMasterC_50 (DE1), Charming_50 (DE1), Derg_46 (DE1), Fitzgerald_48 (DE1), Flatwoods_49 (DE1), Fosterous_48 (DE1), Gaea_48 (DE1), Galadriel_50 (DE1), Geodirt_48 (DE1), Gustavo_48 (DE1), JKSyngboy_46 (DE1), Kamashten_48 (DE1), Keitabear_49 (DE1), Kewpiedoll_50 (DE1), Kroos_49 (DE1), Kwobi_49 (DE1), Lennon_49 (DE1), LilHam_46 (DE1), Love_54 (DE1), McKinley_52 (DE1), MoontowerMania_49 (DE1), Nordenberg_45 (DE1), Paries_53 (DE1), Ribeye_49 (DE1), RiverRaider_50 (DE1), Rofo_49 (DE1), Sanjuju_48 (DE1), Saronaya_48 (DE1), SchottB_47 (DE1), Sedona_49 (DE1), Shivanishola_49 (DE1), Sitar_49 (DE1), StorminNorm_48 (DE1), Tangent_50 (DE1), Tangerine_48 (DE1), Thing3_48 (DE1), Tycho_48 (DE1), Vivi2_53 (DE1), YorkOnyx_49 (DE1),

Summary by clusters:

There is one cluster represented in this pham: DE1

Info for manual annotations of cluster DE1:

- Start number 3 was manually annotated 42 times for cluster DE1.

Gene Information:

Gene: Affeca_47 Start: 42131, Stop: 42397, Start Num: 3

Candidate Starts for Affeca_47:

(Start: 3 @42131 has 42 MA's), (6, 42299), (8, 42329),

Gene: Ailee_46 Start: 41724, Stop: 42002, Start Num: 3

Candidate Starts for Ailee_46:

(Start: 3 @41724 has 42 MA's), (6, 41895), (8, 41925),

Gene: Angelicage_47 Start: 42549, Stop: 42815, Start Num: 3

Candidate Starts for Angelicage_47:

(Start: 3 @42549 has 42 MA's), (6, 42717), (8, 42747),

Gene: Ashertheman_49 Start: 42290, Stop: 42556, Start Num: 3

Candidate Starts for Ashertheman_49:
(Start: 3 @42290 has 42 MA's), (4, 42383), (5, 42404), (8, 42491),

Gene: Baddon_48 Start: 42818, Stop: 43087, Start Num: 3
Candidate Starts for Baddon_48:
(Start: 3 @42818 has 42 MA's), (4, 42911), (5, 42932), (8, 43019),

Gene: Barsten_50 Start: 42668, Stop: 42934, Start Num: 3
Candidate Starts for Barsten_50:
(1, 42323), (Start: 3 @42668 has 42 MA's), (6, 42836), (8, 42866),

Gene: Baumdotcom_47 Start: 41687, Stop: 41956, Start Num: 3
Candidate Starts for Baumdotcom_47:
(Start: 3 @41687 has 42 MA's), (4, 41780), (5, 41801), (8, 41888),

Gene: Bibwit_47 Start: 41380, Stop: 41646, Start Num: 3
Candidate Starts for Bibwit_47:
(Start: 3 @41380 has 42 MA's), (4, 41473), (5, 41494), (8, 41581),

Gene: Bizzy_49 Start: 41975, Stop: 42244, Start Num: 3
Candidate Starts for Bizzy_49:
(Start: 3 @41975 has 42 MA's), (4, 42068), (5, 42089), (8, 42176),

Gene: BobBob_48 Start: 41984, Stop: 42241, Start Num: 3
Candidate Starts for BobBob_48:
(Start: 3 @41984 has 42 MA's), (6, 42149), (8, 42179),

Gene: Brandonk123_52 Start: 43115, Stop: 43363, Start Num: 3
Candidate Starts for Brandonk123_52:
(2, 43040), (Start: 3 @43115 has 42 MA's), (5, 43220), (6, 43277), (8, 43307),

Gene: ChadMasterC_50 Start: 44067, Stop: 44333, Start Num: 3
Candidate Starts for ChadMasterC_50:
(1, 43722), (Start: 3 @44067 has 42 MA's), (6, 44235), (8, 44265),

Gene: Charming_50 Start: 42423, Stop: 42689, Start Num: 3
Candidate Starts for Charming_50:
(Start: 3 @42423 has 42 MA's), (6, 42591), (8, 42621),

Gene: Derg_46 Start: 41567, Stop: 41836, Start Num: 3
Candidate Starts for Derg_46:
(Start: 3 @41567 has 42 MA's), (4, 41660), (5, 41681), (8, 41768),

Gene: Fitzgerald_48 Start: 43322, Stop: 43615, Start Num: 3
Candidate Starts for Fitzgerald_48:
(Start: 3 @43322 has 42 MA's), (6, 43493), (8, 43523),

Gene: Flatwoods_49 Start: 41916, Stop: 42185, Start Num: 3
Candidate Starts for Flatwoods_49:
(Start: 3 @41916 has 42 MA's), (4, 42009), (5, 42030), (8, 42117),

Gene: Fosterous_48 Start: 42088, Stop: 42360, Start Num: 3
Candidate Starts for Fosterous_48:

(2, 42007), (Start: 3 @42088 has 42 MA's), (5, 42196), (6, 42253), (8, 42283),

Gene: Gaea_48 Start: 41569, Stop: 41841, Start Num: 3

Candidate Starts for Gaea_48:

(Start: 3 @41569 has 42 MA's), (4, 41665), (5, 41686), (8, 41773),

Gene: Galadriel_50 Start: 42880, Stop: 43146, Start Num: 3

Candidate Starts for Galadriel_50:

(2, 42805), (Start: 3 @42880 has 42 MA's), (5, 42985), (6, 43042), (8, 43072),

Gene: Geodirt_48 Start: 43443, Stop: 43703, Start Num: 3

Candidate Starts for Geodirt_48:

(2, 43368), (Start: 3 @43443 has 42 MA's), (5, 43554), (6, 43611), (8, 43641),

Gene: Gustavo_48 Start: 41741, Stop: 42019, Start Num: 3

Candidate Starts for Gustavo_48:

(Start: 3 @41741 has 42 MA's), (4, 41834), (5, 41855), (8, 41942),

Gene: JKSyngboy_46 Start: 42340, Stop: 42618, Start Num: 3

Candidate Starts for JKSyngboy_46:

(Start: 3 @42340 has 42 MA's), (4, 42433), (5, 42454), (8, 42541),

Gene: Kamashten_48 Start: 41860, Stop: 42108, Start Num: 3

Candidate Starts for Kamashten_48:

(2, 41785), (Start: 3 @41860 has 42 MA's), (5, 41965), (6, 42022), (8, 42046),

Gene: Keitabear_49 Start: 43355, Stop: 43630, Start Num: 3

Candidate Starts for Keitabear_49:

(Start: 3 @43355 has 42 MA's), (6, 43523), (8, 43553),

Gene: Kewpiedoll_50 Start: 42799, Stop: 43059, Start Num: 3

Candidate Starts for Kewpiedoll_50:

(2, 42724), (Start: 3 @42799 has 42 MA's), (6, 42961), (8, 42991),

Gene: Kroos_49 Start: 42475, Stop: 42744, Start Num: 3

Candidate Starts for Kroos_49:

(Start: 3 @42475 has 42 MA's), (4, 42568), (5, 42589), (8, 42676),

Gene: Kwobi_49 Start: 42462, Stop: 42728, Start Num: 3

Candidate Starts for Kwobi_49:

(Start: 3 @42462 has 42 MA's), (4, 42555), (5, 42576), (8, 42663),

Gene: Lennon_49 Start: 43444, Stop: 43710, Start Num: 3

Candidate Starts for Lennon_49:

(Start: 3 @43444 has 42 MA's), (6, 43612), (8, 43642),

Gene: LilHam_46 Start: 41080, Stop: 41349, Start Num: 3

Candidate Starts for LilHam_46:

(Start: 3 @41080 has 42 MA's), (4, 41173), (5, 41194), (8, 41281),

Gene: Love_54 Start: 44062, Stop: 44334, Start Num: 3

Candidate Starts for Love_54:

(2, 43981), (Start: 3 @44062 has 42 MA's), (5, 44170), (6, 44227), (8, 44257),

Gene: McKinley_52 Start: 43457, Stop: 43717, Start Num: 3
Candidate Starts for McKinley_52:
(2, 43382), (Start: 3 @43457 has 42 MA's), (5, 43562), (6, 43619), (8, 43649),

Gene: MoontowerMania_49 Start: 43064, Stop: 43336, Start Num: 3
Candidate Starts for MoontowerMania_49:
(Start: 3 @43064 has 42 MA's), (6, 43232), (8, 43262),

Gene: Nordenberg_45 Start: 42236, Stop: 42502, Start Num: 3
Candidate Starts for Nordenberg_45:
(2, 42161), (Start: 3 @42236 has 42 MA's), (5, 42341), (6, 42398), (8, 42428),

Gene: Paries_53 Start: 43707, Stop: 43973, Start Num: 3
Candidate Starts for Paries_53:
(2, 43632), (Start: 3 @43707 has 42 MA's), (5, 43812), (6, 43869), (8, 43899),

Gene: Ribeye_49 Start: 42893, Stop: 43162, Start Num: 3
Candidate Starts for Ribeye_49:
(Start: 3 @42893 has 42 MA's), (4, 42986), (5, 43007), (8, 43094),

Gene: RiverRaider_50 Start: 41311, Stop: 41568, Start Num: 3
Candidate Starts for RiverRaider_50:
(Start: 3 @41311 has 42 MA's), (4, 41398), (6, 41476), (7, 41497),

Gene: Rofo_49 Start: 42812, Stop: 43078, Start Num: 3
Candidate Starts for Rofo_49:
(Start: 3 @42812 has 42 MA's), (6, 42980), (8, 43010),

Gene: Sanjuju_48 Start: 43455, Stop: 43748, Start Num: 3
Candidate Starts for Sanjuju_48:
(Start: 3 @43455 has 42 MA's), (6, 43626), (8, 43656),

Gene: Saronaya_48 Start: 41741, Stop: 42019, Start Num: 3
Candidate Starts for Saronaya_48:
(Start: 3 @41741 has 42 MA's), (4, 41834), (5, 41855), (8, 41942),

Gene: SchottB_47 Start: 42735, Stop: 43004, Start Num: 3
Candidate Starts for SchottB_47:
(Start: 3 @42735 has 42 MA's), (4, 42828), (5, 42849), (8, 42936),

Gene: Sedona_49 Start: 43050, Stop: 43313, Start Num: 3
Candidate Starts for Sedona_49:
(Start: 3 @43050 has 42 MA's), (4, 43140), (5, 43161), (8, 43248),

Gene: Shivanishola_49 Start: 41756, Stop: 42031, Start Num: 3
Candidate Starts for Shivanishola_49:
(Start: 3 @41756 has 42 MA's), (6, 41924), (8, 41954),

Gene: Sitar_49 Start: 43444, Stop: 43710, Start Num: 3
Candidate Starts for Sitar_49:
(Start: 3 @43444 has 42 MA's), (6, 43612), (8, 43642),

Gene: StorminNorm_48 Start: 41826, Stop: 42095, Start Num: 3
Candidate Starts for StorminNorm_48:
(Start: 3 @41826 has 42 MA's), (4, 41919), (5, 41940), (8, 42027),

Gene: Tangent_50 Start: 42435, Stop: 42701, Start Num: 3
Candidate Starts for Tangent_50:
(Start: 3 @42435 has 42 MA's), (6, 42603), (8, 42633),

Gene: Tangerine_48 Start: 41604, Stop: 41873, Start Num: 3
Candidate Starts for Tangerine_48:
(Start: 3 @41604 has 42 MA's), (4, 41697), (5, 41718), (8, 41805),

Gene: Thing3_48 Start: 41860, Stop: 42108, Start Num: 3
Candidate Starts for Thing3_48:
(2, 41785), (Start: 3 @41860 has 42 MA's), (5, 41965), (6, 42022), (8, 42046),

Gene: Tycho_48 Start: 41694, Stop: 41963, Start Num: 3
Candidate Starts for Tycho_48:
(Start: 3 @41694 has 42 MA's), (4, 41787), (5, 41808), (8, 41895),

Gene: Vivi2_53 Start: 43666, Stop: 43938, Start Num: 3
Candidate Starts for Vivi2_53:
(2, 43585), (Start: 3 @43666 has 42 MA's), (5, 43774), (6, 43831), (8, 43861),

Gene: YorkOnyx_49 Start: 41951, Stop: 42217, Start Num: 3
Candidate Starts for YorkOnyx_49:
(Start: 3 @41951 has 42 MA's), (4, 42044), (5, 42065), (8, 42152),