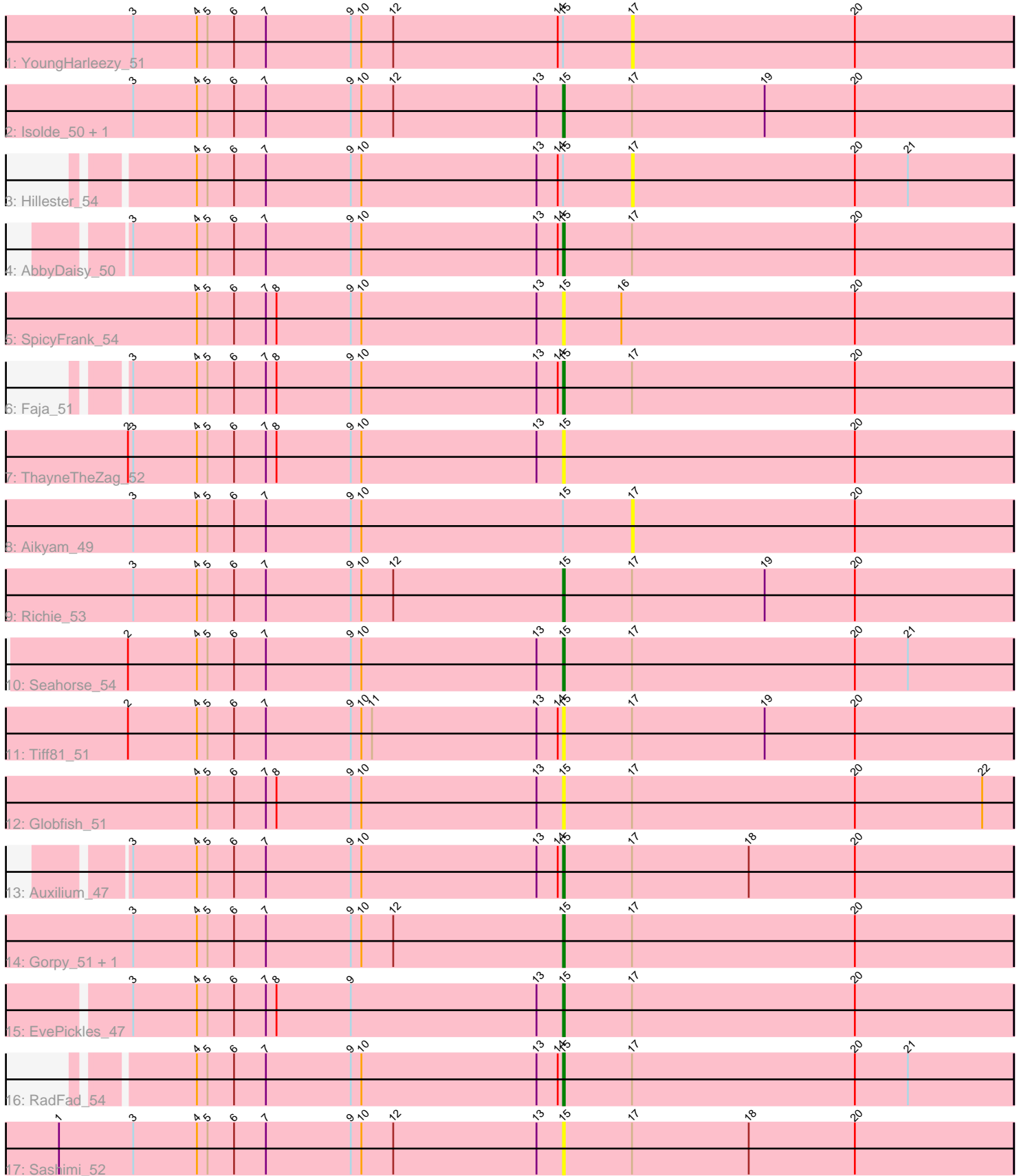


Pham 182575



Note: Tracks are now grouped by subcluster and scaled. Switching in subcluster is indicated by changes in track color. Track scale is now set by default to display the region 30 bp upstream of start 1 to 30 bp downstream of the last possible start. If this default region is judged to be packed too tightly with annotated starts, the track will be further scaled to only show that region of the ORF with annotated starts. This action will be indicated by adding "Zoomed" to the title. For starts, yellow indicates the location of called starts comprised solely of Glimmer/GeneMark auto-annotations, green indicates the location of called starts with at least 1 manual gene annotation.

Pham 182575 Report

This analysis was run 11/02/24 on database version 579.

Pham number 182575 has 19 members, 9 are drafts.

Phages represented in each track:

- Track 1 : YoungHarleezy_51
- Track 2 : Isolde_50, CookieBear_51
- Track 3 : Hillester_54
- Track 4 : AbbyDaisy_50
- Track 5 : SpicyFrank_54
- Track 6 : Faja_51
- Track 7 : ThayneTheZag_52
- Track 8 : Aikyam_49
- Track 9 : Richie_53
- Track 10 : Seahorse_54
- Track 11 : Tiff81_51
- Track 12 : Globfish_51
- Track 13 : Auxilium_47
- Track 14 : Gorpy_51, Sakai_50
- Track 15 : EvePickles_47
- Track 16 : RadFad_54
- Track 17 : Sashimi_52

Summary of Final Annotations (See graph section above for start numbers):

The start number called the most often in the published annotations is 15, it was called in 10 of the 10 non-draft genes in the pham.

Genes that call this "Most Annotated" start:

- AbbyDaisy_50, Auxilium_47, CookieBear_51, EvePickles_47, Faja_51, Globfish_51, Gorpy_51, Isolde_50, RadFad_54, Richie_53, Sakai_50, Sashimi_52, Seahorse_54, SpicyFrank_54, ThayneTheZag_52, Tiff81_51,

Genes that have the "Most Annotated" start but do not call it:

- Aikyam_49, Hillester_54, YoungHarleezy_51,

Genes that do not have the "Most Annotated" start:

-

Summary by start number:

Start 15:

- Found in 19 of 19 (100.0%) of genes in pham
- Manual Annotations of this start: 10 of 10
- Called 84.2% of time when present
- Phage (with cluster) where this start called: AbbyDaisy_50 (AY), Auxilium_47 (AY), CookieBear_51 (AY), EvePickles_47 (AY), Faja_51 (AY), Globfish_51 (AY), Gorpy_51 (AY), Isolde_50 (AY), RadFad_54 (AY), Richie_53 (AY), Sakai_50 (AY), Sashimi_52 (AY), Seahorse_54 (AY), SpicyFrank_54 (AY), ThayneTheZag_52 (AY), Tiff81_51 (AY),

Start 17:

- Found in 17 of 19 (89.5%) of genes in pham
- No Manual Annotations of this start.
- Called 17.6% of time when present
- Phage (with cluster) where this start called: Aikyam_49 (AY), Hillester_54 (AY), YoungHarleezy_51 (AY),

Summary by clusters:

There is one cluster represented in this pham: AY

Info for manual annotations of cluster AY:

- Start number 15 was manually annotated 10 times for cluster AY.

Gene Information:

Gene: AbbyDaisy_50 Start: 31666, Stop: 31412, Start Num: 15

Candidate Starts for AbbyDaisy_50:

(3, 31909), (4, 31873), (5, 31867), (6, 31852), (7, 31834), (9, 31786), (10, 31780), (13, 31681), (14, 31669), (Start: 15 @31666 has 10 MA's), (17, 31627), (20, 31501),

Gene: Aikyam_49 Start: 29332, Stop: 29117, Start Num: 17

Candidate Starts for Aikyam_49:

(3, 29614), (4, 29578), (5, 29572), (6, 29557), (7, 29539), (9, 29491), (10, 29485), (Start: 15 @29371 has 10 MA's), (17, 29332), (20, 29206),

Gene: Auxilium_47 Start: 28937, Stop: 28683, Start Num: 15

Candidate Starts for Auxilium_47:

(3, 29180), (4, 29144), (5, 29138), (6, 29123), (7, 29105), (9, 29057), (10, 29051), (13, 28952), (14, 28940), (Start: 15 @28937 has 10 MA's), (17, 28898), (18, 28832), (20, 28772),

Gene: CookieBear_51 Start: 31351, Stop: 31097, Start Num: 15

Candidate Starts for CookieBear_51:

(3, 31594), (4, 31558), (5, 31552), (6, 31537), (7, 31519), (9, 31471), (10, 31465), (12, 31447), (13, 31366), (Start: 15 @31351 has 10 MA's), (17, 31312), (19, 31237), (20, 31186),

Gene: EvePickles_47 Start: 31556, Stop: 31302, Start Num: 15

Candidate Starts for EvePickles_47:

(3, 31799), (4, 31763), (5, 31757), (6, 31742), (7, 31724), (8, 31718), (9, 31676), (13, 31571), (Start: 15 @31556 has 10 MA's), (17, 31517), (20, 31391),

Gene: Faja_51 Start: 32526, Stop: 32272, Start Num: 15

Candidate Starts for Faja_51:

(3, 32769), (4, 32733), (5, 32727), (6, 32712), (7, 32694), (8, 32688), (9, 32646), (10, 32640), (13, 32541), (14, 32529), (Start: 15 @32526 has 10 MA's), (17, 32487), (20, 32361),

Gene: Globfish_51 Start: 31449, Stop: 31195, Start Num: 15

Candidate Starts for Globfish_51:

(4, 31656), (5, 31650), (6, 31635), (7, 31617), (8, 31611), (9, 31569), (10, 31563), (13, 31464), (Start: 15 @31449 has 10 MA's), (17, 31410), (20, 31284), (22, 31212),

Gene: Gorpy_51 Start: 32343, Stop: 32089, Start Num: 15

Candidate Starts for Gorpy_51:

(3, 32586), (4, 32550), (5, 32544), (6, 32529), (7, 32511), (9, 32463), (10, 32457), (12, 32439), (Start: 15 @32343 has 10 MA's), (17, 32304), (20, 32178),

Gene: Hillester_54 Start: 32245, Stop: 32030, Start Num: 17

Candidate Starts for Hillester_54:

(4, 32491), (5, 32485), (6, 32470), (7, 32452), (9, 32404), (10, 32398), (13, 32299), (14, 32287), (Start: 15 @32284 has 10 MA's), (17, 32245), (20, 32119), (21, 32089),

Gene: Isolde_50 Start: 31020, Stop: 30766, Start Num: 15

Candidate Starts for Isolde_50:

(3, 31263), (4, 31227), (5, 31221), (6, 31206), (7, 31188), (9, 31140), (10, 31134), (12, 31116), (13, 31035), (Start: 15 @31020 has 10 MA's), (17, 30981), (19, 30906), (20, 30855),

Gene: RadFad_54 Start: 32284, Stop: 32030, Start Num: 15

Candidate Starts for RadFad_54:

(4, 32491), (5, 32485), (6, 32470), (7, 32452), (9, 32404), (10, 32398), (13, 32299), (14, 32287), (Start: 15 @32284 has 10 MA's), (17, 32245), (20, 32119), (21, 32089),

Gene: Richie_53 Start: 32021, Stop: 31767, Start Num: 15

Candidate Starts for Richie_53:

(3, 32264), (4, 32228), (5, 32222), (6, 32207), (7, 32189), (9, 32141), (10, 32135), (12, 32117), (Start: 15 @32021 has 10 MA's), (17, 31982), (19, 31907), (20, 31856),

Gene: Sakai_50 Start: 31054, Stop: 30800, Start Num: 15

Candidate Starts for Sakai_50:

(3, 31297), (4, 31261), (5, 31255), (6, 31240), (7, 31222), (9, 31174), (10, 31168), (12, 31150), (Start: 15 @31054 has 10 MA's), (17, 31015), (20, 30889),

Gene: Sashimi_52 Start: 32287, Stop: 32033, Start Num: 15

Candidate Starts for Sashimi_52:

(1, 32572), (3, 32530), (4, 32494), (5, 32488), (6, 32473), (7, 32455), (9, 32407), (10, 32401), (12, 32383), (13, 32302), (Start: 15 @32287 has 10 MA's), (17, 32248), (18, 32182), (20, 32122),

Gene: Seahorse_54 Start: 33286, Stop: 33032, Start Num: 15

Candidate Starts for Seahorse_54:

(2, 33532), (4, 33493), (5, 33487), (6, 33472), (7, 33454), (9, 33406), (10, 33400), (13, 33301), (Start: 15 @33286 has 10 MA's), (17, 33247), (20, 33121), (21, 33091),

Gene: SpicyFrank_54 Start: 32132, Stop: 31878, Start Num: 15

Candidate Starts for SpicyFrank_54:

(4, 32339), (5, 32333), (6, 32318), (7, 32300), (8, 32294), (9, 32252), (10, 32246), (13, 32147), (Start: 15 @32132 has 10 MA's), (16, 32099), (20, 31967),

Gene: ThayneTheZag_52 Start: 31128, Stop: 30874, Start Num: 15

Candidate Starts for ThayneTheZag_52:

(2, 31374), (3, 31371), (4, 31335), (5, 31329), (6, 31314), (7, 31296), (8, 31290), (9, 31248), (10, 31242), (13, 31143), (Start: 15 @31128 has 10 MA's), (20, 30963),

Gene: Tiff81_51 Start: 29465, Stop: 29211, Start Num: 15

Candidate Starts for Tiff81_51:

(2, 29711), (4, 29672), (5, 29666), (6, 29651), (7, 29633), (9, 29585), (10, 29579), (11, 29573), (13, 29480), (14, 29468), (Start: 15 @29465 has 10 MA's), (17, 29426), (19, 29351), (20, 29300),

Gene: YoungHarleezy_51 Start: 31479, Stop: 31264, Start Num: 17

Candidate Starts for YoungHarleezy_51:

(3, 31761), (4, 31725), (5, 31719), (6, 31704), (7, 31686), (9, 31638), (10, 31632), (12, 31614), (14, 31521), (Start: 15 @31518 has 10 MA's), (17, 31479), (20, 31353),