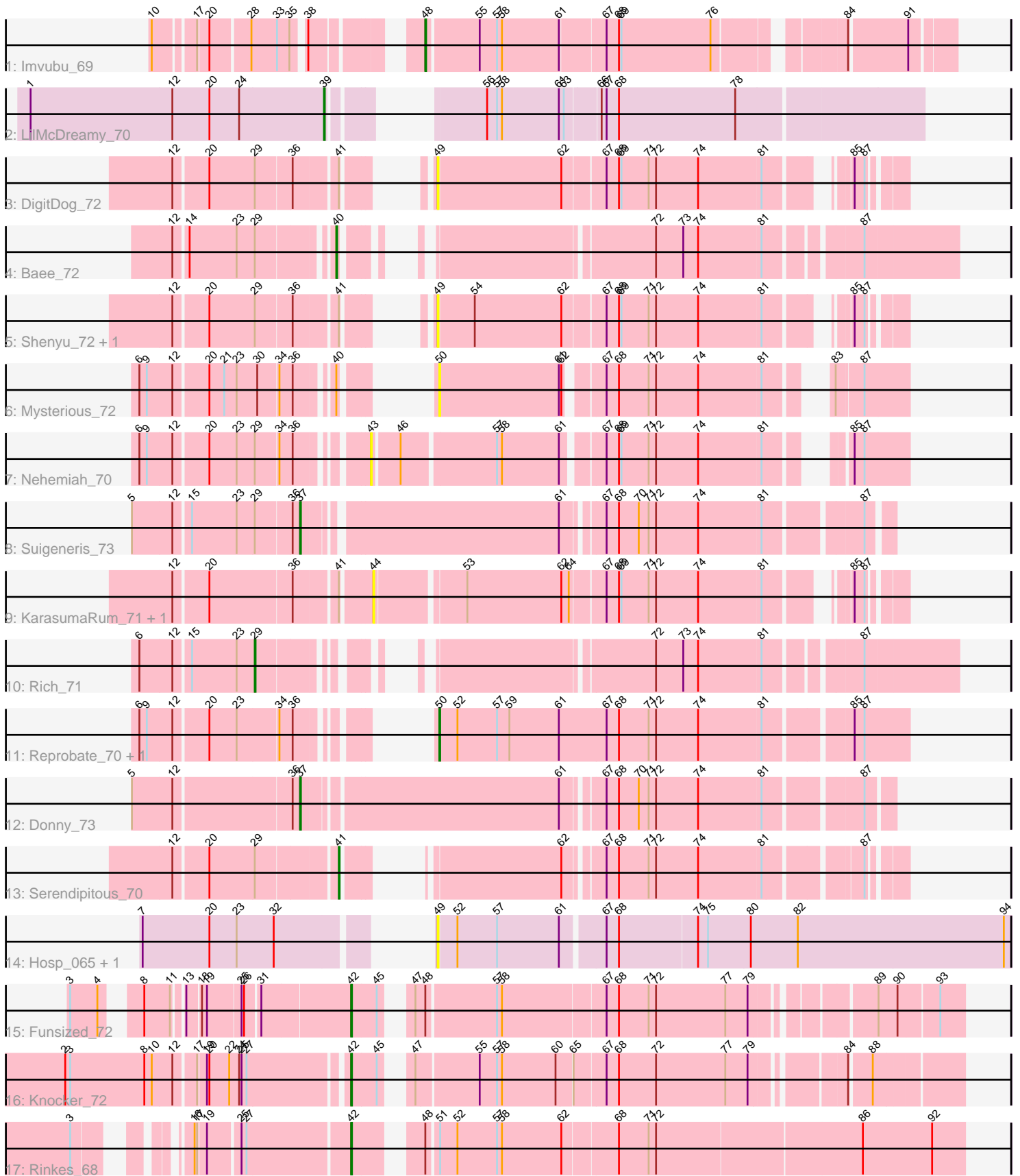


Pham 182593



Note: Tracks are now grouped by subcluster and scaled. Switching in subcluster is indicated by changes in track color. Track scale is now set by default to display the region 30 bp upstream of start 1 to 30 bp downstream of the last possible start. If this default region is judged to be packed too tightly with annotated starts, the track will be further scaled to only show that region of the ORF with annotated starts. This action will be indicated by adding "Zoomed" to the title. For starts, yellow indicates the location of called starts comprised solely of Glimmer/GeneMark auto-annotations, green indicates the location of called starts with at least 1 manual gene annotation.

Pham 182593 Report

This analysis was run 11/02/24 on database version 579.

Pham number 182593 has 21 members, 9 are drafts.

Phages represented in each track:

- Track 1 : Imvubu_69
- Track 2 : LilMcDreamy_70
- Track 3 : DigitDog_72
- Track 4 : Bae_72
- Track 5 : Shenyu_72, Nangang_71
- Track 6 : Mysterious_72
- Track 7 : Nehemiah_70
- Track 8 : Suigeneris_73
- Track 9 : KarasumaRum_71, StinkyVeggy_71
- Track 10 : Rich_71
- Track 11 : Reprobate_70, Phelemich_68
- Track 12 : Donny_73
- Track 13 : Serendipitous_70
- Track 14 : Hosp_065, Jolie1_067
- Track 15 : Funsized_72
- Track 16 : Knocker_72
- Track 17 : Rinkes_68

Summary of Final Annotations (See graph section above for start numbers):

The start number called the most often in the published annotations is 42, it was called in 3 of the 12 non-draft genes in the pham.

Genes that call this "Most Annotated" start:

- Funsized_72, Knocker_72, Rinkes_68,

Genes that have the "Most Annotated" start but do not call it:

-

Genes that do not have the "Most Annotated" start:

- Bae_72, DigitDog_72, Donny_73, Hosp_065, Imvubu_69, Jolie1_067, KarasumaRum_71, LilMcDreamy_70, Mysterious_72, Nangang_71, Nehemiah_70, Phelemich_68, Reprobate_70, Rich_71, Serendipitous_70, Shenyu_72, StinkyVeggy_71, Suigeneris_73,

Summary by start number:

Start 29:

- Found in 8 of 21 (38.1%) of genes in pham
- Manual Annotations of this start: 1 of 12
- Called 12.5% of time when present
- Phage (with cluster) where this start called: Rich_71 (B5),

Start 37:

- Found in 2 of 21 (9.5%) of genes in pham
- Manual Annotations of this start: 2 of 12
- Called 100.0% of time when present
- Phage (with cluster) where this start called: Donny_73 (B5), Suigeneris_73 (B5),

Start 39:

- Found in 1 of 21 (4.8%) of genes in pham
- Manual Annotations of this start: 1 of 12
- Called 100.0% of time when present
- Phage (with cluster) where this start called: LilMcDreamy_70 (B12),

Start 40:

- Found in 2 of 21 (9.5%) of genes in pham
- Manual Annotations of this start: 1 of 12
- Called 50.0% of time when present
- Phage (with cluster) where this start called: Bae_72 (B5),

Start 41:

- Found in 6 of 21 (28.6%) of genes in pham
- Manual Annotations of this start: 1 of 12
- Called 16.7% of time when present
- Phage (with cluster) where this start called: Serendipitous_70 (B5),

Start 42:

- Found in 3 of 21 (14.3%) of genes in pham
- Manual Annotations of this start: 3 of 12
- Called 100.0% of time when present
- Phage (with cluster) where this start called: Funsized_72 (B9), Knocker_72 (B9), Rinkes_68 (B9),

Start 43:

- Found in 1 of 21 (4.8%) of genes in pham
- No Manual Annotations of this start.
- Called 100.0% of time when present
- Phage (with cluster) where this start called: Nehemiah_70 (B5),

Start 44:

- Found in 2 of 21 (9.5%) of genes in pham
- No Manual Annotations of this start.
- Called 100.0% of time when present
- Phage (with cluster) where this start called: KarasumaRum_71 (B5), StinkyVeggy_71 (B5),

Start 48:

- Found in 3 of 21 (14.3%) of genes in pham
- Manual Annotations of this start: 1 of 12
- Called 33.3% of time when present
- Phage (with cluster) where this start called: Imvubu_69 (B10),

Start 49:

- Found in 5 of 21 (23.8%) of genes in pham
- No Manual Annotations of this start.
- Called 100.0% of time when present
- Phage (with cluster) where this start called: DigitDog_72 (B5), Hosp_065 (B6), Jolie1_067 (B6), Nangang_71 (B5), Shenyu_72 (B5),

Start 50:

- Found in 3 of 21 (14.3%) of genes in pham
- Manual Annotations of this start: 2 of 12
- Called 100.0% of time when present
- Phage (with cluster) where this start called: Mysterious_72 (B5), Phelemich_68 (B5), Reprobate_70 (B5),

Summary by clusters:

There are 5 clusters represented in this pham: B5, B6, B12, B9, B10,

Info for manual annotations of cluster B10:

- Start number 48 was manually annotated 1 time for cluster B10.

Info for manual annotations of cluster B12:

- Start number 39 was manually annotated 1 time for cluster B12.

Info for manual annotations of cluster B5:

- Start number 29 was manually annotated 1 time for cluster B5.
- Start number 37 was manually annotated 2 times for cluster B5.
- Start number 40 was manually annotated 1 time for cluster B5.
- Start number 41 was manually annotated 1 time for cluster B5.
- Start number 50 was manually annotated 2 times for cluster B5.

Info for manual annotations of cluster B9:

- Start number 42 was manually annotated 3 times for cluster B9.

Gene Information:

Gene: Bae_72 Start: 60813, Stop: 61436, Start Num: 40

Candidate Starts for Bae_72:

(12, 60642), (14, 60657), (23, 60714), (Start: 29 @60735 has 1 MA's), (Start: 40 @60813 has 1 MA's), (72, 61101), (73, 61134), (74, 61152), (81, 61227), (87, 61326),

Gene: DigitDog_72 Start: 59928, Stop: 60428, Start Num: 49

Candidate Starts for DigitDog_72:

(12, 59703), (20, 59742), (Start: 29 @59796 has 1 MA's), (36, 59838), (Start: 41 @59886 has 1 MA's), (49, 59928), (62, 60075), (67, 60123), (68, 60138), (69, 60141), (71, 60174), (72, 60183), (74, 60234), (81, 60309), (85, 60378), (87, 60390),

Gene: Donny_73 Start: 59741, Stop: 60397, Start Num: 37

Candidate Starts for Donny_73:

(5, 59549), (12, 59597), (36, 59732), (Start: 37 @59741 has 2 MA's), (61, 60035), (67, 60077), (68, 60092), (70, 60116), (71, 60128), (72, 60137), (74, 60188), (81, 60263), (87, 60368),

Gene: Funsized_72 Start: 61973, Stop: 62629, Start Num: 42

Candidate Starts for Funsized_72:

(3, 61688), (4, 61721), (8, 61751), (11, 61781), (13, 61790), (18, 61805), (19, 61811), (25, 61850), (26, 61853), (31, 61868), (Start: 42 @61973 has 3 MA's), (45, 62003), (47, 62021), (Start: 48 @62033 has 1 MA's), (57, 62114), (58, 62120), (67, 62240), (68, 62255), (71, 62291), (72, 62300), (77, 62384), (79, 62411), (89, 62534), (90, 62555), (93, 62600),

Gene: Hosp_065 Start: 56539, Stop: 57216, Start Num: 49

Candidate Starts for Hosp_065:

(7, 56272), (20, 56353), (23, 56386), (32, 56431), (49, 56539), (52, 56560), (57, 56608), (61, 56683), (67, 56731), (68, 56746), (74, 56839), (75, 56851), (80, 56902), (82, 56959), (94, 57208),

Gene: Imvubu_69 Start: 58708, Stop: 59286, Start Num: 48

Candidate Starts for Imvubu_69:

(10, 58453), (17, 58495), (20, 58507), (28, 58552), (33, 58582), (35, 58597), (38, 58609), (Start: 48 @58708 has 1 MA's), (55, 58768), (57, 58789), (58, 58795), (61, 58864), (67, 58915), (68, 58930), (69, 58933), (76, 59041), (84, 59170), (91, 59236),

Gene: Jolie1_067 Start: 58667, Stop: 59344, Start Num: 49

Candidate Starts for Jolie1_067:

(7, 58400), (20, 58481), (23, 58514), (32, 58559), (49, 58667), (52, 58688), (57, 58736), (61, 58811), (67, 58859), (68, 58874), (74, 58967), (75, 58979), (80, 59030), (82, 59087), (94, 59336),

Gene: KarasumaRum_71 Start: 59737, Stop: 60303, Start Num: 44

Candidate Starts for KarasumaRum_71:

(12, 59521), (20, 59560), (36, 59656), (Start: 41 @59704 has 1 MA's), (44, 59737), (53, 59836), (62, 59950), (64, 59959), (67, 59998), (68, 60013), (69, 60016), (71, 60049), (72, 60058), (74, 60109), (81, 60184), (85, 60253), (87, 60265),

Gene: Knocker_72 Start: 61176, Stop: 61832, Start Num: 42

Candidate Starts for Knocker_72:

(2, 60855), (3, 60861), (8, 60951), (10, 60960), (12, 60984), (17, 61008), (19, 61017), (20, 61020), (22, 61044), (24, 61056), (25, 61059), (27, 61065), (Start: 42 @61176 has 3 MA's), (45, 61206), (47, 61224), (55, 61296), (57, 61317), (58, 61323), (60, 61386), (65, 61404), (67, 61440), (68, 61455), (72, 61500), (77, 61584), (79, 61611), (84, 61707), (88, 61731),

Gene: LilMcDreamy_70 Start: 59640, Stop: 60260, Start Num: 39

Candidate Starts for LilMcDreamy_70:

(1, 59286), (12, 59457), (20, 59502), (24, 59538), (Start: 39 @59640 has 1 MA's), (56, 59748), (57, 59760), (58, 59766), (61, 59835), (63, 59841), (66, 59880), (67, 59886), (68, 59901), (78, 60042),

Gene: Mysterious_72 Start: 59836, Stop: 60333, Start Num: 50

Candidate Starts for Mysterious_72:

(6, 59590), (9, 59599), (12, 59629), (20, 59668), (21, 59686), (23, 59701), (30, 59725), (34, 59749), (36, 59764), (Start: 40 @59800 has 1 MA's), (Start: 50 @59836 has 2 MA's), (61, 59980), (62, 59983), (67, 60019), (68, 60034), (71, 60070), (72, 60079), (74, 60130), (81, 60205), (83, 60250), (87, 60280),

Gene: Nangang_71 Start: 59924, Stop: 60454, Start Num: 49

Candidate Starts for Nangang_71:

(12, 59699), (20, 59738), (Start: 29 @59792 has 1 MA's), (36, 59834), (Start: 41 @59882 has 1 MA's), (49, 59924), (54, 59966), (62, 60071), (67, 60119), (68, 60134), (69, 60137), (71, 60170), (72, 60179), (74, 60230), (81, 60305), (85, 60392), (87, 60404),

Gene: Nehemiah_70 Start: 59668, Stop: 60234, Start Num: 43

Candidate Starts for Nehemiah_70:

(6, 59428), (9, 59437), (12, 59467), (20, 59506), (23, 59539), (Start: 29 @59560 has 1 MA's), (34, 59587), (36, 59602), (43, 59668), (46, 59698), (57, 59806), (58, 59812), (61, 59881), (67, 59923), (68, 59938), (69, 59941), (71, 59974), (72, 59983), (74, 60034), (81, 60109), (85, 60169), (87, 60181),

Gene: Phelemich_68 Start: 59668, Stop: 60213, Start Num: 50

Candidate Starts for Phelemich_68:

(6, 59422), (9, 59431), (12, 59461), (20, 59500), (23, 59533), (34, 59581), (36, 59596), (Start: 50 @59668 has 2 MA's), (52, 59689), (57, 59737), (59, 59752), (61, 59812), (67, 59869), (68, 59884), (71, 59920), (72, 59929), (74, 59980), (81, 60055), (85, 60148), (87, 60160),

Gene: Reprobate_70 Start: 59673, Stop: 60218, Start Num: 50

Candidate Starts for Reprobate_70:

(6, 59427), (9, 59436), (12, 59466), (20, 59505), (23, 59538), (34, 59586), (36, 59601), (Start: 50 @59673 has 2 MA's), (52, 59694), (57, 59742), (59, 59757), (61, 59817), (67, 59874), (68, 59889), (71, 59925), (72, 59934), (74, 59985), (81, 60060), (85, 60153), (87, 60165),

Gene: Rich_71 Start: 60783, Stop: 61481, Start Num: 29

Candidate Starts for Rich_71:

(6, 60651), (12, 60690), (15, 60708), (23, 60762), (Start: 29 @60783 has 1 MA's), (72, 61146), (73, 61179), (74, 61197), (81, 61272), (87, 61371),

Gene: Rinkes_68 Start: 59532, Stop: 60221, Start Num: 42

Candidate Starts for Rinkes_68:

(3, 59274), (16, 59358), (17, 59361), (19, 59370), (25, 59406), (27, 59412), (Start: 42 @59532 has 3 MA's), (Start: 48 @59592 has 1 MA's), (51, 59604), (52, 59625), (57, 59673), (58, 59679), (62, 59748), (68, 59811), (71, 59847), (72, 59856), (86, 60099), (92, 60183),

Gene: Serendipitous_70 Start: 59224, Stop: 59772, Start Num: 41

Candidate Starts for Serendipitous_70:

(12, 59041), (20, 59080), (Start: 29 @59134 has 1 MA's), (Start: 41 @59224 has 1 MA's), (62, 59407), (67, 59446), (68, 59461), (71, 59497), (72, 59506), (74, 59557), (81, 59632), (87, 59734),

Gene: Shenyu_72 Start: 60293, Stop: 60793, Start Num: 49

Candidate Starts for Shenyu_72:

(12, 60068), (20, 60107), (Start: 29 @60161 has 1 MA's), (36, 60203), (Start: 41 @60251 has 1 MA's), (49, 60293), (54, 60335), (62, 60440), (67, 60488), (68, 60503), (69, 60506), (71, 60539), (72, 60548), (74, 60599), (81, 60674), (85, 60743), (87, 60755),

Gene: StinkyVeggy_71 Start: 59737, Stop: 60303, Start Num: 44

Candidate Starts for StinkyVeggy_71:

(12, 59521), (20, 59560), (36, 59656), (Start: 41 @59704 has 1 MA's), (44, 59737), (53, 59836), (62, 59950), (64, 59959), (67, 59998), (68, 60013), (69, 60016), (71, 60049), (72, 60058), (74, 60109), (81, 60184), (85, 60253), (87, 60265),

Gene: Suigeneris_73 Start: 59932, Stop: 60579, Start Num: 37

Candidate Starts for Suigeneris_73:

(5, 59740), (12, 59788), (15, 59806), (23, 59860), (Start: 29 @59881 has 1 MA's), (36, 59923), (Start: 37 @59932 has 2 MA's), (61, 60220), (67, 60262), (68, 60277), (70, 60301), (71, 60313), (72, 60322), (74, 60373), (81, 60448), (87, 60553),