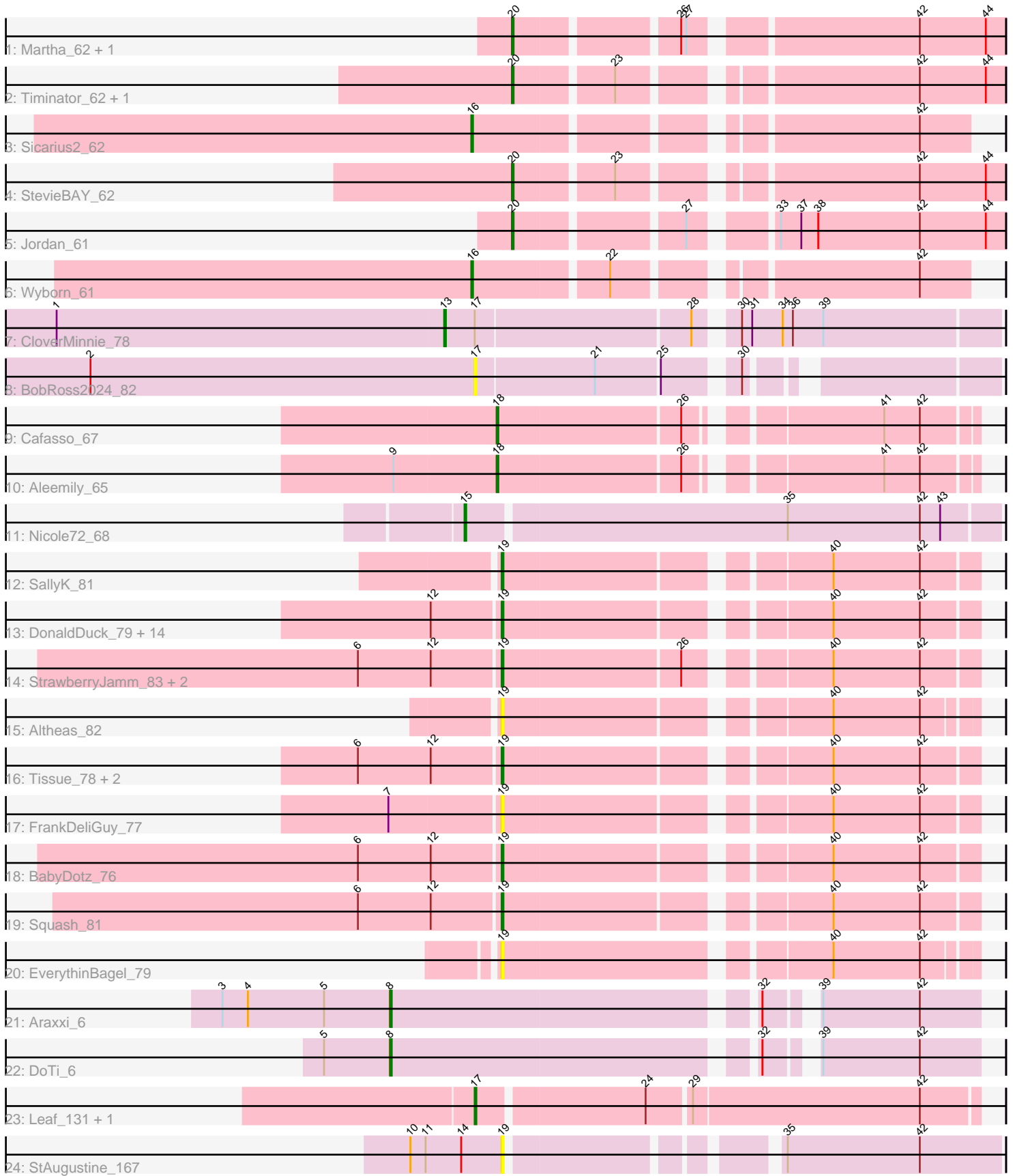


Pham 185668



Note: Tracks are now grouped by subcluster and scaled. Switching in subcluster is indicated by changes in track color. Track scale is now set by default to display the region 30 bp upstream of start 1 to 30 bp downstream of the last possible start. If this default region is judged to be packed too tightly with annotated starts, the track will be further scaled to only show that region of the ORF with annotated starts. This action will be indicated by adding "Zoomed" to the title. For starts, yellow indicates the location of called starts comprised solely of Glimmer/GeneMark auto-annotations, green indicates the location of called starts with at least 1 manual gene annotation.

Pham 185668 Report

This analysis was run 11/02/24 on database version 579.

Pham number 185668 has 45 members, 11 are drafts.

Phages represented in each track:

- Track 1 : Martha_62, TaeYoung_63
- Track 2 : Timinator_62, LeeroyJ_62
- Track 3 : Sicarius2_62
- Track 4 : StevieBAY_62
- Track 5 : Jordan_61
- Track 6 : Wyborn_61
- Track 7 : CloverMinnie_78
- Track 8 : BobRoss2024_82
- Track 9 : Cafasso_67
- Track 10 : Aleemily_65
- Track 11 : Nicole72_68
- Track 12 : SallyK_81
- Track 13 : DonaldDuck_79, Phabia_77, Sillytadpoles_80, Quammi_76, Judebell_77, Viceroy_76, Rudy_75, Wheelie_77, Wayne3_79, Casend_78, Lonelysoil_75, Zhafia_82, Teehee_78, Jehoshaphat_79, Llemily_79
- Track 14 : StrawberryJamm_83, Zagie_79, Namago_80
- Track 15 : Altheas_82
- Track 16 : Tissue_78, Kyva_81, Grassboy_82
- Track 17 : FrankDeliGuy_77
- Track 18 : BabyDotz_76
- Track 19 : Squash_81
- Track 20 : EverythinBagel_79
- Track 21 : Araxxi_6
- Track 22 : DoTi_6
- Track 23 : Leaf_131, Dewdrop_131
- Track 24 : StAugustine_167

Summary of Final Annotations (See graph section above for start numbers):

The start number called the most often in the published annotations is 19, it was called in 18 of the 34 non-draft genes in the pham.

Genes that call this "Most Annotated" start:

- Altheas_82, BabyDotz_76, Casend_78, DonaldDuck_79, EverythinBagel_79, FrankDeliGuy_77, Grassboy_82, Jehoshaphat_79, Judebell_77, Kyva_81, Llemily_79, Lonelysoil_75, Namago_80, Phabia_77, Quammi_76, Rudy_75, SallyK_81, Sillytadpoles_80, Squash_81, StAugustine_167, StrawberryJamm_83, Teehee_78, Tissue_78, Viceroy_76, Wayne3_79, Wheelie_77, Zagie_79, Zhafia_82,

Genes that have the "Most Annotated" start but do not call it:

-

Genes that do not have the "Most Annotated" start:

- Aleemily_65, Araxxi_6, BobRoss2024_82, Cafasso_67, CloverMinnie_78, Dewdrop_131, DoTi_6, Jordan_61, Leaf_131, LeeroyJ_62, Martha_62, Nicole72_68, Sicarius2_62, StevieBAY_62, TaeYoung_63, Timinator_62, Wyborn_61,

Summary by start number:

Start 8:

- Found in 2 of 45 (4.4%) of genes in pham
- Manual Annotations of this start: 2 of 34
- Called 100.0% of time when present
- Phage (with cluster) where this start called: Araxxi_6 (EM1), DoTi_6 (EM1),

Start 13:

- Found in 1 of 45 (2.2%) of genes in pham
- Manual Annotations of this start: 1 of 34
- Called 100.0% of time when present
- Phage (with cluster) where this start called: CloverMinnie_78 (DR),

Start 15:

- Found in 1 of 45 (2.2%) of genes in pham
- Manual Annotations of this start: 1 of 34
- Called 100.0% of time when present
- Phage (with cluster) where this start called: Nicole72_68 (EC),

Start 16:

- Found in 2 of 45 (4.4%) of genes in pham
- Manual Annotations of this start: 2 of 34
- Called 100.0% of time when present
- Phage (with cluster) where this start called: Sicarius2_62 (AO2), Wyborn_61 (AO2),

Start 17:

- Found in 4 of 45 (8.9%) of genes in pham
- Manual Annotations of this start: 2 of 34
- Called 75.0% of time when present
- Phage (with cluster) where this start called: BobRoss2024_82 (DR), Dewdrop_131 (GC), Leaf_131 (GC),

Start 18:

- Found in 2 of 45 (4.4%) of genes in pham
- Manual Annotations of this start: 2 of 34
- Called 100.0% of time when present
- Phage (with cluster) where this start called: Aleemily_65 (DZ), Cafasso_67 (DZ),

Start 19:

- Found in 28 of 45 (62.2%) of genes in pham
- Manual Annotations of this start: 18 of 34
- Called 100.0% of time when present
- Phage (with cluster) where this start called: Altheas_82 (EG), BabyDotz_76 (EG), Casend_78 (EG), DonaldDuck_79 (EG), EverythinBagel_79 (EG), FrankDeliGuy_77 (EG), Grassboy_82 (EG), Jehoshaphat_79 (EG), Judebell_77 (EG), Kyva_81 (EG), Llemily_79 (EG), Lonelysoil_75 (EG), Namago_80 (EG), Phabia_77 (EG), Quammi_76 (EG), Rudy_75 (EG), SallyK_81 (EG), Sillytadpoles_80 (EG), Squash_81 (EG), StAugustine_167 (singleton), StrawberryJamm_83 (EG), Teehee_78 (EG), Tissue_78 (EG), Viceroy_76 (EG), Wayne3_79 (EG), Wheelie_77 (EG), Zagie_79 (EG), Zhafia_82 (EG),

Start 20:

- Found in 6 of 45 (13.3%) of genes in pham
- Manual Annotations of this start: 6 of 34
- Called 100.0% of time when present
- Phage (with cluster) where this start called: Jordan_61 (AO2), LeeroyJ_62 (AO2), Martha_62 (AO2), StevieBAY_62 (AO2), TaeYoung_63 (AO2), Timinator_62 (AO2),

Summary by clusters:

There are 8 clusters represented in this pham: GC, singleton, EG, EC, DZ, AO2, EM1, DR,

Info for manual annotations of cluster AO2:

- Start number 16 was manually annotated 2 times for cluster AO2.
- Start number 20 was manually annotated 6 times for cluster AO2.

Info for manual annotations of cluster DR:

- Start number 13 was manually annotated 1 time for cluster DR.

Info for manual annotations of cluster DZ:

- Start number 18 was manually annotated 2 times for cluster DZ.

Info for manual annotations of cluster EC:

- Start number 15 was manually annotated 1 time for cluster EC.

Info for manual annotations of cluster EG:

- Start number 19 was manually annotated 18 times for cluster EG.

Info for manual annotations of cluster EM1:

- Start number 8 was manually annotated 2 times for cluster EM1.

Info for manual annotations of cluster GC:

- Start number 17 was manually annotated 2 times for cluster GC.

Gene Information:

Gene: Aleemily_65 Start: 44043, Stop: 44294, Start Num: 18

Candidate Starts for Aleemily_65:

(9, 43986), (Start: 18 @44043 has 2 MA's), (26, 44148), (41, 44244), (42, 44265),

Gene: Altheas_82 Start: 52675, Stop: 52424, Start Num: 19

Candidate Starts for Altheas_82:

(Start: 19 @52675 has 18 MA's), (40, 52504), (42, 52453),

Gene: Araxxi_6 Start: 4637, Stop: 4323, Start Num: 8

Candidate Starts for Araxxi_6:

(3, 4736), (4, 4721), (5, 4676), (Start: 8 @4637 has 2 MA's), (32, 4436), (39, 4415), (42, 4358),

Gene: BabyDotz_76 Start: 52692, Stop: 52438, Start Num: 19

Candidate Starts for BabyDotz_76:

(6, 52773), (12, 52731), (Start: 19 @52692 has 18 MA's), (40, 52521), (42, 52470),

Gene: BobRoss2024_82 Start: 58913, Stop: 58647, Start Num: 17

Candidate Starts for BobRoss2024_82:

(2, 59138), (Start: 17 @58913 has 2 MA's), (21, 58844), (25, 58808), (30, 58772),

Gene: Cafasso_67 Start: 44688, Stop: 44939, Start Num: 18

Candidate Starts for Cafasso_67:

(Start: 18 @44688 has 2 MA's), (26, 44793), (41, 44889), (42, 44910),

Gene: Casend_78 Start: 51974, Stop: 51720, Start Num: 19

Candidate Starts for Casend_78:

(12, 52013), (Start: 19 @51974 has 18 MA's), (40, 51803), (42, 51752),

Gene: CloverMinnie_78 Start: 58221, Stop: 57913, Start Num: 13

Candidate Starts for CloverMinnie_78:

(1, 58449), (Start: 13 @58221 has 1 MA's), (Start: 17 @58203 has 2 MA's), (28, 58080), (30, 58062), (31, 58056), (34, 58038), (36, 58032), (39, 58014),

Gene: Dewdrop_131 Start: 79903, Stop: 80184, Start Num: 17

Candidate Starts for Dewdrop_131:

(Start: 17 @79903 has 2 MA's), (24, 79996), (29, 80020), (42, 80152),

Gene: DoTi_6 Start: 4634, Stop: 4320, Start Num: 8

Candidate Starts for DoTi_6:

(5, 4673), (Start: 8 @4634 has 2 MA's), (32, 4433), (39, 4412), (42, 4355),

Gene: DonaldDuck_79 Start: 51326, Stop: 51072, Start Num: 19

Candidate Starts for DonaldDuck_79:

(12, 51365), (Start: 19 @51326 has 18 MA's), (40, 51155), (42, 51104),

Gene: EverythinBagel_79 Start: 51811, Stop: 51557, Start Num: 19

Candidate Starts for EverythinBagel_79:

(Start: 19 @51811 has 18 MA's), (40, 51637), (42, 51586),

Gene: FrankDeliGuy_77 Start: 51694, Stop: 51440, Start Num: 19

Candidate Starts for FrankDeliGuy_77:

(7, 51757), (Start: 19 @51694 has 18 MA's), (40, 51523), (42, 51472),

Gene: Grassboy_82 Start: 52375, Stop: 52121, Start Num: 19

Candidate Starts for Grassboy_82:

(6, 52456), (12, 52414), (Start: 19 @52375 has 18 MA's), (40, 52204), (42, 52153),

Gene: Jehoshaphat_79 Start: 52242, Stop: 51988, Start Num: 19

Candidate Starts for Jehoshaphat_79:

(12, 52281), (Start: 19 @52242 has 18 MA's), (40, 52071), (42, 52020),

Gene: Jordan_61 Start: 41349, Stop: 41609, Start Num: 20

Candidate Starts for Jordan_61:

(Start: 20 @41349 has 6 MA's), (27, 41439), (33, 41478), (37, 41490), (38, 41499), (42, 41559), (44, 41598),

Gene: Judebell_77 Start: 51466, Stop: 51212, Start Num: 19

Candidate Starts for Judebell_77:

(12, 51505), (Start: 19 @51466 has 18 MA's), (40, 51295), (42, 51244),

Gene: Kyva_81 Start: 52399, Stop: 52145, Start Num: 19

Candidate Starts for Kyva_81:

(6, 52480), (12, 52438), (Start: 19 @52399 has 18 MA's), (40, 52228), (42, 52177),

Gene: Leaf_131 Start: 79834, Stop: 80115, Start Num: 17

Candidate Starts for Leaf_131:

(Start: 17 @79834 has 2 MA's), (24, 79927), (29, 79951), (42, 80083),

Gene: LeeroyJ_62 Start: 41440, Stop: 41697, Start Num: 20

Candidate Starts for LeeroyJ_62:

(Start: 20 @41440 has 6 MA's), (23, 41494), (42, 41647), (44, 41686),

Gene: Llemily_79 Start: 51021, Stop: 50767, Start Num: 19

Candidate Starts for Llemily_79:

(12, 51060), (Start: 19 @51021 has 18 MA's), (40, 50850), (42, 50799),

Gene: Lonelysoil_75 Start: 50778, Stop: 50524, Start Num: 19

Candidate Starts for Lonelysoil_75:

(12, 50817), (Start: 19 @50778 has 18 MA's), (40, 50607), (42, 50556),

Gene: Martha_62 Start: 41574, Stop: 41834, Start Num: 20

Candidate Starts for Martha_62:

(Start: 20 @41574 has 6 MA's), (26, 41661), (27, 41664), (42, 41784), (44, 41823),

Gene: Namago_80 Start: 51746, Stop: 51492, Start Num: 19

Candidate Starts for Namago_80:

(6, 51827), (12, 51785), (Start: 19 @51746 has 18 MA's), (26, 51644), (40, 51575), (42, 51524),

Gene: Nicole72_68 Start: 47467, Stop: 47772, Start Num: 15

Candidate Starts for Nicole72_68:

(Start: 15 @47467 has 1 MA's), (35, 47650), (42, 47728), (43, 47740),

Gene: Phabia_77 Start: 51433, Stop: 51179, Start Num: 19

Candidate Starts for Phabia_77:

(12, 51472), (Start: 19 @51433 has 18 MA's), (40, 51262), (42, 51211),

Gene: Quammi_76 Start: 51133, Stop: 50879, Start Num: 19

Candidate Starts for Quammi_76:

(12, 51172), (Start: 19 @51133 has 18 MA's), (40, 50962), (42, 50911),

Gene: Rudy_75 Start: 51169, Stop: 50915, Start Num: 19

Candidate Starts for Rudy_75:

(12, 51208), (Start: 19 @51169 has 18 MA's), (40, 50998), (42, 50947),

Gene: SallyK_81 Start: 53146, Stop: 52892, Start Num: 19

Candidate Starts for SallyK_81:

(Start: 19 @53146 has 18 MA's), (40, 52975), (42, 52924),

Gene: Sicarius2_62 Start: 39966, Stop: 40226, Start Num: 16

Candidate Starts for Sicarius2_62:

(Start: 16 @39966 has 2 MA's), (42, 40197),

Gene: Sillytadpoles_80 Start: 51009, Stop: 50755, Start Num: 19

Candidate Starts for Sillytadpoles_80:

(12, 51048), (Start: 19 @51009 has 18 MA's), (40, 50838), (42, 50787),

Gene: Squash_81 Start: 52382, Stop: 52128, Start Num: 19

Candidate Starts for Squash_81:

(6, 52463), (12, 52421), (Start: 19 @52382 has 18 MA's), (40, 52211), (42, 52160),

Gene: StAugustine_167 Start: 91113, Stop: 90853, Start Num: 19

Candidate Starts for StAugustine_167:

(10, 91167), (11, 91158), (14, 91137), (Start: 19 @91113 has 18 MA's), (35, 90978), (42, 90900),

Gene: StevieBAY_62 Start: 41704, Stop: 41961, Start Num: 20

Candidate Starts for StevieBAY_62:

(Start: 20 @41704 has 6 MA's), (23, 41758), (42, 41911), (44, 41950),

Gene: StrawberryJamm_83 Start: 51549, Stop: 51295, Start Num: 19

Candidate Starts for StrawberryJamm_83:

(6, 51630), (12, 51588), (Start: 19 @51549 has 18 MA's), (26, 51447), (40, 51378), (42, 51327),

Gene: TaeYoung_63 Start: 41547, Stop: 41807, Start Num: 20

Candidate Starts for TaeYoung_63:

(Start: 20 @41547 has 6 MA's), (26, 41634), (27, 41637), (42, 41757), (44, 41796),

Gene: Teehee_78 Start: 52239, Stop: 51985, Start Num: 19

Candidate Starts for Teehee_78:

(12, 52278), (Start: 19 @52239 has 18 MA's), (40, 52068), (42, 52017),

Gene: Timinator_62 Start: 41553, Stop: 41810, Start Num: 20

Candidate Starts for Timinator_62:

(Start: 20 @41553 has 6 MA's), (23, 41607), (42, 41760), (44, 41799),

Gene: Tissue_78 Start: 52006, Stop: 51752, Start Num: 19

Candidate Starts for Tissue_78:

(6, 52087), (12, 52045), (Start: 19 @52006 has 18 MA's), (40, 51835), (42, 51784),

Gene: Viceroy_76 Start: 51142, Stop: 50888, Start Num: 19

Candidate Starts for Viceroy_76:

(12, 51181), (Start: 19 @51142 has 18 MA's), (40, 50971), (42, 50920),

Gene: Wayne3_79 Start: 52002, Stop: 51748, Start Num: 19
Candidate Starts for Wayne3_79:
(12, 52041), (Start: 19 @52002 has 18 MA's), (40, 51831), (42, 51780),

Gene: Wheelie_77 Start: 51323, Stop: 51069, Start Num: 19
Candidate Starts for Wheelie_77:
(12, 51362), (Start: 19 @51323 has 18 MA's), (40, 51152), (42, 51101),

Gene: Wyborn_61 Start: 40683, Stop: 40943, Start Num: 16
Candidate Starts for Wyborn_61:
(Start: 16 @40683 has 2 MA's), (22, 40758), (42, 40914),

Gene: Zagie_79 Start: 51826, Stop: 51572, Start Num: 19
Candidate Starts for Zagie_79:
(6, 51907), (12, 51865), (Start: 19 @51826 has 18 MA's), (26, 51724), (40, 51655), (42, 51604),

Gene: Zhafia_82 Start: 51803, Stop: 51549, Start Num: 19
Candidate Starts for Zhafia_82:
(12, 51842), (Start: 19 @51803 has 18 MA's), (40, 51632), (42, 51581),