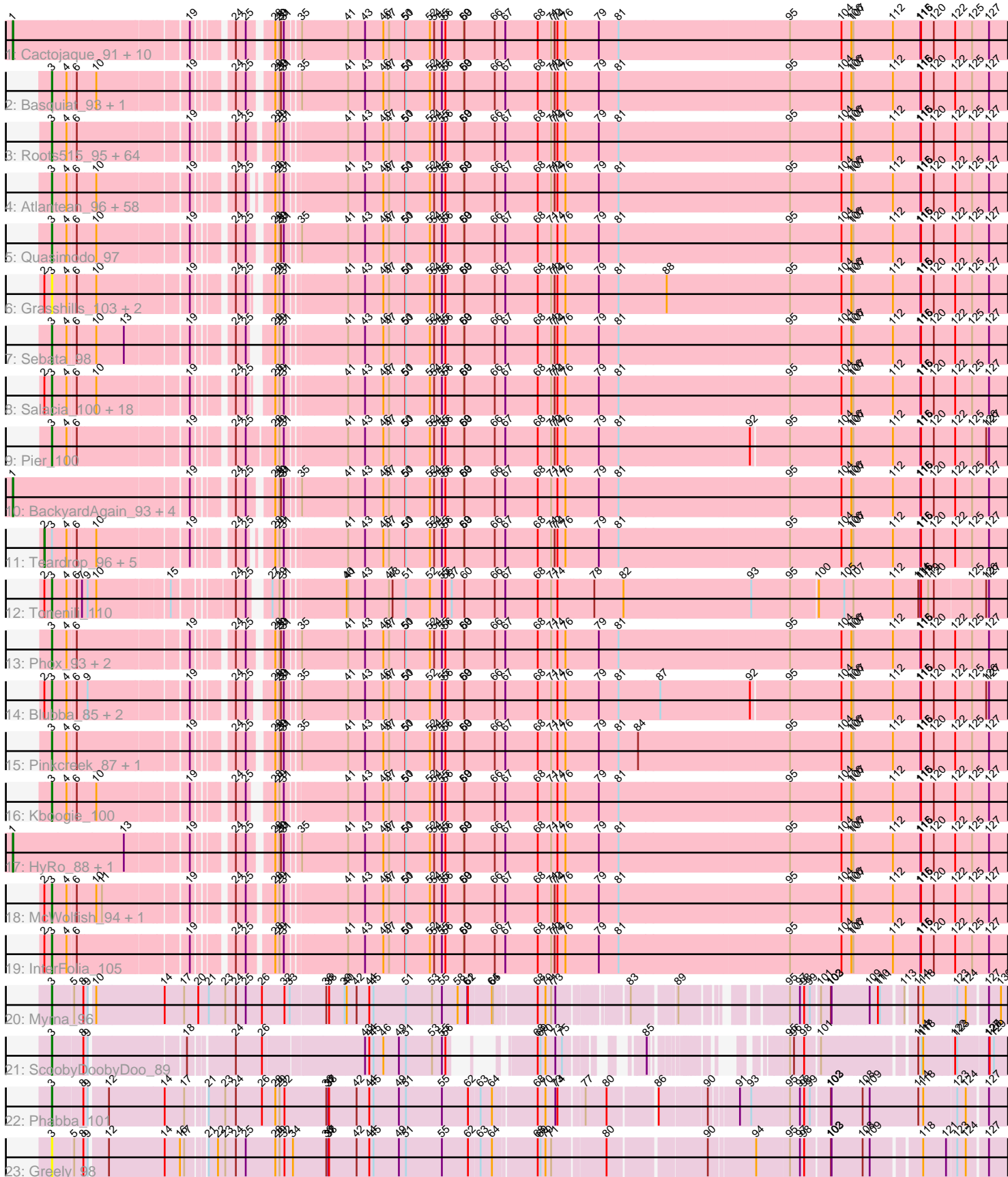


Pham 186665



Note: Tracks are now grouped by subcluster and scaled. Switching in subcluster is indicated by changes in track color. Track scale is now set by default to display the region 30 bp upstream of start 1 to 30 bp downstream of the last possible start. If this default region is judged to be packed too tightly with annotated starts, the track will be further scaled to only show that region of the ORF with annotated starts. This action will be indicated by adding "Zoomed" to the title. For starts, yellow indicates the location of called starts comprised solely of Glimmer/GeneMark auto-annotations, green indicates the location of called starts with at least 1 manual gene annotation.

Pham 186665 Report

This analysis was run 11/02/24 on database version 579.

Pham number 186665 has 192 members, 19 are drafts.

Phages represented in each track:

- Track 1 : Cactojaque_91, Flabslab_91, ChaylaJr_91, ErnieJ_92, Melpomini_90, Rabinovish_93, Turret_91, Blackbrain_91, Janiyra_98, EasyJones_99, ChickenPhender_92
- Track 2 : Basquiat_93, Chargie21_93
- Track 3 : Roots515_95, Loanshark_96, BananaFence_95, BeanWater_88, Tainan_101, LolaVinca_98, Napoleon13_92, Caravan_91, Khaleesi_95, Megamind_95, MikeLiesIn_97, Ewok_97, ParkTD_97, FoxtrotP1_96, ShiaLabeouf_96, TinyTim_96, BadAgartude_93, Zalkecks_97, Naval22_101, Kamryn_96, EmToTheThree_99, Domi_90, YemiJoy2021_97, ET08_85, Delylah_99, Gizmo_100, Erdmann_97, Bonray_96, NedWong_97, FrayBell_102, Willis_97, Darko_96, Lee7_94, Wally_95, QBert_90, Shelob_98, Bipolarisk_95, Delilah_96, Lukilu_87, Pio_100, Asterius_93, Zeenon_98, Drazdys_96, Mangeria_96, Norm_97, Ava3_97, Jessibeth14_95, StephanieG_95, Capablanca_98, ZygoTaiga_95, Matsumoto_94, LordLeafolot_101, Pleione_99, Daffodil_101, Issimir_95, MoMoMixon_97, Gabriel_98, SrishMeg2525_95, Bxz1_94, Shrimp_96, Littleton_96, Yucca_96, FudgeTart_96, Burrough_96, Rizal_93
- Track 4 : Atlantean_96, JPickles_95, StubbySaigey_99, CindyLou_98, Naija_96, Ngannou_93, Iota_91, Shnickers_97, ValleyTerrace_97, LifeSavor_96, Halldule_90, Audrick_99, McGee_98, Sauce_97, Babyland_97, Amataga_97, Guwapp_96, Essence_94, InigoMontoya_98, ArcherS7_96, Blackdragon_92, LRRHood_91, Ronan_90, JulietS_91, Derek_97, Cali_92, Jemmno_97, Nappy_99, Jedediah_100, EmmaElysia_96, Yassified_93, Rahel_96, Ading_97, Spec_93, JustHall_93, Pivoine_96, Grungle_84, Momo_96, Trinitium_93, Jaygup_97, Ghost_96, Shaqnato_89, Gamgam_97, Koguma_93, Sprinklers_92, Phlegm_99, SmallFry_97, Chomp_96, Patter_97, DirtMonster_90, CharlieB_92, YoungMoneyMata_97, Adlitam_97, JigglyPuff_104, Bangla1971_98, SilverDipper_98, Fludd_97, Phusco_97, Latch_97
- Track 5 : Quasimodo_97
- Track 6 : Grasshills_103, EggyFarm_104, BigCity_104
- Track 7 : Sebata_98
- Track 8 : Salacia_100, Mikro_94, Concombre_103, Bigswole_101, IkeLoa_90, LinStu_96, I3_102, DTDevon_97, NoodleTree_104, Dandelion_103, Demodog_103, DrPhinkDaddy_95, Specks_102, Tyke_98, Izajani_96, NuevoMundo_102, Maby2021_96, JayJay_98, Bread_96
- Track 9 : Pier_100
- Track 10 : BackyardAgain_93, Morizzled23_96, ScottMcG_93, Catera_93, Dietrick_88

- Track 11 : Teardrop_96, Nidhogg_97, Tortoise16_94, Astraea_94, RoMag_91, Breeniome_96
- Track 12 : Tonenili_110
- Track 13 : Phox_93, Alice_89, Spud_96
- Track 14 : Blubba_85, Cane17_85, Colt_86
- Track 15 : Pinkcreek_87, Stubby_89
- Track 16 : Kboogie_100
- Track 17 : HyRo_88, Shifa_85
- Track 18 : McWolfish_94, PurduePete_96
- Track 19 : InterFolia_105
- Track 20 : Myrna_96
- Track 21 : ScoobyDoobyDoo_89
- Track 22 : Phabba_101
- Track 23 : Greely_98

Summary of Final Annotations (See graph section above for start numbers):

The start number called the most often in the published annotations is 3, it was called in 149 of the 173 non-draft genes in the pham.

Genes that call this "Most Annotated" start:

- Ading_97, Adlitam_97, Alice_89, Amataga_97, ArcherS7_96, Asterius_93, Atlantean_96, Audrick_99, Ava3_97, Babyland_97, BadAgartude_93, BananaFence_95, Bangla1971_98, Basquiat_93, BeanWater_88, BigCity_104, Bigswole_101, Bipolarisk_95, Blackdragon_92, Blubba_85, Bonray_96, Bread_96, Burrough_96, Bxz1_94, Cali_92, Cane17_85, Capablanca_98, Caravan_91, Chargie21_93, CharlieB_92, Chomp_96, CindyLou_98, Colt_86, Concombre_103, DTDevon_97, Daffodil_101, Dandelion_103, Darko_96, Delilah_96, Delylah_99, Demodog_103, Derek_97, DirtMonster_90, Domi_90, DrPhinkDaddy_95, Drazdys_96, ET08_85, EggFarm_104, EmToTheThree_99, EmmaElysia_96, Erdmann_97, Essence_94, Ewok_97, Fludd_97, FoxtrotP1_96, FrayBell_102, FudgeTart_96, Gabriel_98, Gamgam_97, Ghost_96, Gizmo_100, Grasshills_103, Greely_98, Grungle_84, Guwapp_96, Halldule_90, I3_102, IkeLoa_90, InigoMontoya_98, InterFolia_105, Iota_91, Issimir_95, Izajani_96, JPickles_95, JayJay_98, Jaygup_97, Jedediah_100, Jemmno_97, Jessibeth14_95, JigglyPuff_104, JulietS_91, JustHall_93, Kamryn_96, Kboogie_100, Khaleesi_95, Koguma_93, LRRHood_91, Latch_97, Lee7_94, LifeSavor_96, LinStu_96, Littleton_96, Loanshark_96, LolaVinca_98, LordLeafolot_101, Lukilu_87, Maby2021_96, Mangeria_96, Matsumoto_94, McGee_98, McWolfish_94, Megamind_95, MikeLiesIn_97, Mikro_94, MoMoMixon_97, Momo_96, Myrna_96, Naija_96, Napoleon13_92, Nappy_99, Naval22_101, NedWong_97, Ngannou_93, NoodleTree_104, Norm_97, NuevoMundo_102, ParkTD_97, Patter_97, Phabba_101, Phlegm_99, Phox_93, Phusco_97, Pier_100, Pinkcreek_87, Pio_100, Pivoine_96, Pleione_99, PurduePete_96, QBert_90, Quasimodo_97, Rahel_96, Rizal_93, Ronan_90, Roots515_95, Salacia_100, Sauce_97, ScoobyDoobyDoo_89, Sebata_98, Shaqnato_89, Shelob_98, ShiaLabeouf_96, Shnickers_97, Shrimp_96, SilverDipper_98, SmallFry_97, Spec_93, Specks_102, Sprinklers_92, Spud_96, SrishMeg2525_95, StephanieG_95, StubbySaigey_99, Stubby_89, Tainan_101, TinyTim_96, Tonenili_110, Trinitium_93, Tyke_98, ValleyTerrace_97, Wally_95, Willis_97, Yassified_93, YemiJoy2021_97, YoungMoneyMata_97, Yucca_96,

Zalkecks_97, Zeenon_98, ZygoTaiga_95,

Genes that have the "Most Annotated" start but do not call it:

• Astraea_94, Breeniome_96, Nidhogg_97, RoMag_91, Teardrop_96, Tortoise16_94,

Genes that do not have the "Most Annotated" start:

• BackyardAgain_93, Blackbrain_91, Cactojaque_91, Catera_93, ChaylaJr_91, ChickenPhender_92, Dietrick_88, EasyJones_99, ErnieJ_92, Flabslab_91, HyRo_88, Janiyra_98, Melpomini_90, Morizzled23_96, Rabinovish_93, ScottMcG_93, Shifa_85, Turret_91,

Summary by start number:

Start 1:

- Found in 18 of 192 (9.4%) of genes in pham
- Manual Annotations of this start: 18 of 173
- Called 100.0% of time when present
- Phage (with cluster) where this start called: BackyardAgain_93 (C1), Blackbrain_91 (C1), Cactojaque_91 (C1), Catera_93 (C1), ChaylaJr_91 (C1), ChickenPhender_92 (C1), Dietrick_88 (C1), EasyJones_99 (C1), ErnieJ_92 (C1), Flabslab_91 (C1), HyRo_88 (C1), Janiyra_98 (C1), Melpomini_90 (C1), Morizzled23_96 (C1), Rabinovish_93 (C1), ScottMcG_93 (C1), Shifa_85 (C1), Turret_91 (C1),

Start 2:

- Found in 35 of 192 (18.2%) of genes in pham
- Manual Annotations of this start: 6 of 173
- Called 17.1% of time when present
- Phage (with cluster) where this start called: Astraea_94 (C1), Breeniome_96 (C1), Nidhogg_97 (C1), RoMag_91 (C1), Teardrop_96 (C1), Tortoise16_94 (C1),

Start 3:

- Found in 174 of 192 (90.6%) of genes in pham
- Manual Annotations of this start: 149 of 173
- Called 96.6% of time when present
- Phage (with cluster) where this start called: Ading_97 (C1), Adlitam_97 (C1), Alice_89 (C1), Amataga_97 (C1), ArcherS7_96 (C1), Asterius_93 (C1), Atlantean_96 (C1), Audrick_99 (C1), Ava3_97 (C1), Babyland_97 (C1), BadAgartude_93 (C1), BananaFence_95 (C1), Bangla1971_98 (C1), Basquiat_93 (C1), BeanWater_88 (C1), BigCity_104 (C1), Bigswole_101 (C1), Bipolarisk_95 (C1), Blackdragon_92 (C1), Blubba_85 (C1), Bonray_96 (C1), Bread_96 (C1), Burrough_96 (C1), Bxz1_94 (C1), Cali_92 (C1), Cane17_85 (C1), Capablanca_98 (C1), Caravan_91 (C1), Chargie21_93 (C1), CharlieB_92 (C1), Chomp_96 (C1), CindyLou_98 (C1), Colt_86 (C1), Concombre_103 (C1), DTDevon_97 (C1), Daffodil_101 (C1), Dandelion_103 (C1), Darko_96 (C1), Delilah_96 (C1), Delylah_99 (C1), Demodog_103 (C1), Derek_97 (C1), DirtMonster_90 (C1), Domi_90 (C1), DrPhinkDaddy_95 (C1), Drazdys_96 (C1), ET08_85 (C1), EggyFarm_104 (C1), EmToTheThree_99 (C1), EmmaElysia_96 (C1), Erdmann_97 (C1), Essence_94 (C1), Ewok_97 (C1), Fludd_97 (C1), FoxtrotP1_96 (C1), FrayBell_102 (C1), FudgeTart_96 (C1), Gabriel_98 (C1), Gamgam_97 (C1), Ghost_96 (C1), Gizmo_100 (C1), Grasshills_103 (C1), Greely_98 (C2), Grungle_84 (C1), Guwapp_96 (C1), Halldule_90 (C1), I3_102 (C1), IkeLoa_90 (C1), InigoMontoya_98 (C1), InterFolia_105 (C1), Iota_91 (C1), Issimir_95 (C1), Izajani_96 (C1), JPickles_95 (C1), JayJay_98 (C1), Jaygup_97 (C1), Jediah_100 (C1), Jemmno_97 (C1), Jessibeth14_95 (C1), JigglyPuff_104 (C1), JulietS_91 (C1),

JustHall_93 (C1), Kamryn_96 (C1), Kboogie_100 (C1), Khaleesi_95 (C1), Koguma_93 (C1), LRRHood_91 (C1), Latch_97 (C1), Lee7_94 (C1), LifeSavor_96 (C1), LinStu_96 (C1), Littleton_96 (C1), Loanshark_96 (C1), LolaVinca_98 (C1), LordLeafolot_101 (C1), Lukilu_87 (C1), Maby2021_96 (C1), Mangeria_96 (C1), Matsumoto_94 (C1), McGee_98 (C1), McWolfish_94 (C1), Megamind_95 (C1), MikeLiesIn_97 (C1), Mikro_94 (C1), MoMoMixon_97 (C1), Momo_96 (C1), Myrna_96 (C2), Naija_96 (C1), Napoleon13_92 (C1), Nappy_99 (C1), Naval22_101 (C1), NedWong_97 (C1), Ngannou_93 (C1), NoodleTree_104 (C1), Norm_97 (C1), NuevoMundo_102 (C1), ParkTD_97 (C1), Patter_97 (C1), Phabba_101 (C2), Phlegm_99 (C1), Phox_93 (C1), Phusco_97 (C1), Pier_100 (C1), Pinkcreek_87 (C1), Pio_100 (C1), Pivoine_96 (C1), Pleione_99 (C1), PurduePete_96 (C1), QBert_90 (C1), Quasimodo_97 (C1), Rahel_96 (C1), Rizal_93 (C1), Ronan_90 (C1), Roots515_95 (C1), Salacia_100 (C1), Sauce_97 (C1), ScoobyDoobyDoo_89 (C2), Sebata_98 (C1), Shaqnato_89 (C1), Shelob_98 (C1), ShiaLabeouf_96 (C1), Shnickers_97 (C1), Shrimp_96 (C1), SilverDipper_98 (C1), SmallFry_97 (C1), Spec_93 (C1), Specks_102 (C1), Sprinklers_92 (C1), Spud_96 (C1), SrishMeg2525_95 (C1), StephanieG_95 (C1), StubbySaigey_99 (C1), Stubby_89 (C1), Tainan_101 (C1), TinyTim_96 (C1), Tonenili_110 (C1), Trinitium_93 (C1), Tyke_98 (C1), ValleyTerrace_97 (C1), Wally_95 (C1), Willis_97 (C1), Yassified_93 (C1), YemiJoy2021_97 (C1), YoungMoneyMata_97 (C1), Yucca_96 (C1), Zalkecks_97 (C1), Zeenon_98 (C1), ZygoTaiga_95 (C1),

Summary by clusters:

There are 2 clusters represented in this pham: C2, C1,

Info for manual annotations of cluster C1:

- Start number 1 was manually annotated 18 times for cluster C1.
- Start number 2 was manually annotated 6 times for cluster C1.
- Start number 3 was manually annotated 146 times for cluster C1.

Info for manual annotations of cluster C2:

- Start number 3 was manually annotated 3 times for cluster C2.

Gene Information:

Gene: Ading_97 Start: 41385, Stop: 45185, Start Num: 3

Candidate Starts for Ading_97:

(Start: 3 @41385 has 149 MA's), (4, 41439), (6, 41469), (10, 41538), (19, 41889), (24, 42003), (25, 42045), (28, 42102), (29, 42120), (31, 42138), (41, 42357), (43, 42429), (46, 42507), (47, 42531), (50, 42600), (51, 42603), (52, 42705), (54, 42723), (55, 42756), (56, 42771), (59, 42849), (60, 42852), (66, 42981), (67, 43026), (68, 43161), (71, 43218), (72, 43233), (74, 43245), (76, 43278), (79, 43419), (81, 43503), (95, 44205), (104, 44421), (106, 44463), (107, 44472), (112, 44640), (115, 44757), (116, 44760), (120, 44811), (122, 44898), (125, 44970), (127, 45039),

Gene: Adlitam_97 Start: 41402, Stop: 45202, Start Num: 3

Candidate Starts for Adlitam_97:

(Start: 3 @41402 has 149 MA's), (4, 41456), (6, 41486), (10, 41555), (19, 41906), (24, 42020), (25, 42062), (28, 42119), (29, 42137), (31, 42155), (41, 42374), (43, 42446), (46, 42524), (47, 42548), (50, 42617), (51, 42620), (52, 42722), (54, 42740), (55, 42773), (56, 42788), (59, 42866), (60, 42869), (66, 42998), (67, 43043), (68, 43178), (71, 43235), (72, 43250), (74, 43262), (76, 43295), (79, 43436), (81,

43520), (95, 44222), (104, 44438), (106, 44480), (107, 44489), (112, 44657), (115, 44774), (116, 44777), (120, 44828), (122, 44915), (125, 44987), (127, 45056),

Gene: Alice_89 Start: 38827, Stop: 42642, Start Num: 3

Candidate Starts for Alice_89:

(Start: 3 @38827 has 149 MA's), (4, 38881), (6, 38911), (19, 39331), (24, 39445), (25, 39487), (28, 39562), (29, 39580), (30, 39586), (31, 39598), (35, 39637), (41, 39814), (43, 39886), (46, 39964), (47, 39988), (50, 40057), (51, 40060), (52, 40162), (54, 40180), (55, 40213), (56, 40228), (59, 40306), (60, 40309), (66, 40438), (67, 40483), (68, 40618), (71, 40675), (74, 40702), (76, 40735), (79, 40876), (81, 40960), (95, 41662), (104, 41878), (106, 41920), (107, 41929), (112, 42097), (115, 42214), (116, 42217), (120, 42268), (122, 42355), (125, 42427), (127, 42496),

Gene: Amataga_97 Start: 40647, Stop: 44447, Start Num: 3

Candidate Starts for Amataga_97:

(Start: 3 @40647 has 149 MA's), (4, 40701), (6, 40731), (10, 40800), (19, 41151), (24, 41265), (25, 41307), (28, 41364), (29, 41382), (31, 41400), (41, 41619), (43, 41691), (46, 41769), (47, 41793), (50, 41862), (51, 41865), (52, 41967), (54, 41985), (55, 42018), (56, 42033), (59, 42111), (60, 42114), (66, 42243), (67, 42288), (68, 42423), (71, 42480), (72, 42495), (74, 42507), (76, 42540), (79, 42681), (81, 42765), (95, 43467), (104, 43683), (106, 43725), (107, 43734), (112, 43902), (115, 44019), (116, 44022), (120, 44073), (122, 44160), (125, 44232), (127, 44301),

Gene: ArcherS7_96 Start: 40965, Stop: 44765, Start Num: 3

Candidate Starts for ArcherS7_96:

(Start: 3 @40965 has 149 MA's), (4, 41019), (6, 41049), (10, 41118), (19, 41469), (24, 41583), (25, 41625), (28, 41682), (29, 41700), (31, 41718), (41, 41937), (43, 42009), (46, 42087), (47, 42111), (50, 42180), (51, 42183), (52, 42285), (54, 42303), (55, 42336), (56, 42351), (59, 42429), (60, 42432), (66, 42561), (67, 42606), (68, 42741), (71, 42798), (72, 42813), (74, 42825), (76, 42858), (79, 42999), (81, 43083), (95, 43785), (104, 44001), (106, 44043), (107, 44052), (112, 44220), (115, 44337), (116, 44340), (120, 44391), (122, 44478), (125, 44550), (127, 44619),

Gene: Asterius_93 Start: 40513, Stop: 44343, Start Num: 3

Candidate Starts for Asterius_93:

(Start: 3 @40513 has 149 MA's), (4, 40567), (6, 40597), (19, 41017), (24, 41131), (25, 41173), (28, 41260), (29, 41278), (31, 41296), (41, 41515), (43, 41587), (46, 41665), (47, 41689), (50, 41758), (51, 41761), (52, 41863), (54, 41881), (55, 41914), (56, 41929), (59, 42007), (60, 42010), (66, 42139), (67, 42184), (68, 42319), (71, 42376), (72, 42391), (74, 42403), (76, 42436), (79, 42577), (81, 42661), (95, 43363), (104, 43579), (106, 43621), (107, 43630), (112, 43798), (115, 43915), (116, 43918), (120, 43969), (122, 44056), (125, 44128), (127, 44197),

Gene: Astraea_94 Start: 40359, Stop: 44216, Start Num: 2

Candidate Starts for Astraea_94:

(Start: 2 @40359 has 6 MA's), (Start: 3 @40386 has 149 MA's), (4, 40440), (6, 40470), (10, 40539), (19, 40890), (24, 41004), (25, 41046), (28, 41133), (29, 41151), (31, 41169), (41, 41388), (43, 41460), (46, 41538), (47, 41562), (50, 41631), (51, 41634), (52, 41736), (54, 41754), (55, 41787), (56, 41802), (59, 41880), (60, 41883), (66, 42012), (67, 42057), (68, 42192), (71, 42249), (72, 42264), (74, 42276), (76, 42309), (79, 42450), (81, 42534), (95, 43236), (104, 43452), (106, 43494), (107, 43503), (112, 43671), (115, 43788), (116, 43791), (120, 43842), (122, 43929), (125, 44001), (127, 44070),

Gene: Atlantean_96 Start: 40647, Stop: 44447, Start Num: 3

Candidate Starts for Atlantean_96:

(Start: 3 @40647 has 149 MA's), (4, 40701), (6, 40731), (10, 40800), (19, 41151), (24, 41265), (25, 41307), (28, 41364), (29, 41382), (31, 41400), (41, 41619), (43, 41691), (46, 41769), (47, 41793), (50, 41862), (51, 41865), (52, 41967), (54, 41985), (55, 42018), (56, 42033), (59, 42111), (60, 42114), (66,

42243), (67, 42288), (68, 42423), (71, 42480), (72, 42495), (74, 42507), (76, 42540), (79, 42681), (81, 42765), (95, 43467), (104, 43683), (106, 43725), (107, 43734), (112, 43902), (115, 44019), (116, 44022), (120, 44073), (122, 44160), (125, 44232), (127, 44301),

Gene: Audrick_99 Start: 40626, Stop: 44426, Start Num: 3

Candidate Starts for Audrick_99:

(Start: 3 @40626 has 149 MA's), (4, 40680), (6, 40710), (10, 40779), (19, 41130), (24, 41244), (25, 41286), (28, 41343), (29, 41361), (31, 41379), (41, 41598), (43, 41670), (46, 41748), (47, 41772), (50, 41841), (51, 41844), (52, 41946), (54, 41964), (55, 41997), (56, 42012), (59, 42090), (60, 42093), (66, 42222), (67, 42267), (68, 42402), (71, 42459), (72, 42474), (74, 42486), (76, 42519), (79, 42660), (81, 42744), (95, 43446), (104, 43662), (106, 43704), (107, 43713), (112, 43881), (115, 43998), (116, 44001), (120, 44052), (122, 44139), (125, 44211), (127, 44280),

Gene: Ava3_97 Start: 40886, Stop: 44716, Start Num: 3

Candidate Starts for Ava3_97:

(Start: 3 @40886 has 149 MA's), (4, 40940), (6, 40970), (19, 41390), (24, 41504), (25, 41546), (28, 41633), (29, 41651), (31, 41669), (41, 41888), (43, 41960), (46, 42038), (47, 42062), (50, 42131), (51, 42134), (52, 42236), (54, 42254), (55, 42287), (56, 42302), (59, 42380), (60, 42383), (66, 42512), (67, 42557), (68, 42692), (71, 42749), (72, 42764), (74, 42776), (76, 42809), (79, 42950), (81, 43034), (95, 43736), (104, 43952), (106, 43994), (107, 44003), (112, 44171), (115, 44288), (116, 44291), (120, 44342), (122, 44429), (125, 44501), (127, 44570),

Gene: Babyland_97 Start: 40086, Stop: 43886, Start Num: 3

Candidate Starts for Babyland_97:

(Start: 3 @40086 has 149 MA's), (4, 40140), (6, 40170), (10, 40239), (19, 40590), (24, 40704), (25, 40746), (28, 40803), (29, 40821), (31, 40839), (41, 41058), (43, 41130), (46, 41208), (47, 41232), (50, 41301), (51, 41304), (52, 41406), (54, 41424), (55, 41457), (56, 41472), (59, 41550), (60, 41553), (66, 41682), (67, 41727), (68, 41862), (71, 41919), (72, 41934), (74, 41946), (76, 41979), (79, 42120), (81, 42204), (95, 42906), (104, 43122), (106, 43164), (107, 43173), (112, 43341), (115, 43458), (116, 43461), (120, 43512), (122, 43599), (125, 43671), (127, 43740),

Gene: BackyardAgain_93 Start: 39706, Stop: 43719, Start Num: 1

Candidate Starts for BackyardAgain_93:

(Start: 1 @39706 has 18 MA's), (19, 40408), (24, 40522), (25, 40564), (28, 40639), (29, 40657), (30, 40663), (31, 40675), (35, 40714), (41, 40891), (43, 40963), (46, 41041), (47, 41065), (50, 41134), (51, 41137), (52, 41239), (54, 41257), (55, 41290), (56, 41305), (59, 41383), (60, 41386), (66, 41515), (67, 41560), (68, 41695), (71, 41752), (74, 41779), (76, 41812), (79, 41953), (81, 42037), (95, 42739), (104, 42955), (106, 42997), (107, 43006), (112, 43174), (115, 43291), (116, 43294), (120, 43345), (122, 43432), (125, 43504), (127, 43573),

Gene: BadAgartude_93 Start: 42040, Stop: 45885, Start Num: 3

Candidate Starts for BadAgartude_93:

(Start: 3 @42040 has 149 MA's), (4, 42094), (6, 42124), (19, 42544), (24, 42658), (25, 42700), (28, 42802), (29, 42820), (31, 42838), (41, 43057), (43, 43129), (46, 43207), (47, 43231), (50, 43300), (51, 43303), (52, 43405), (54, 43423), (55, 43456), (56, 43471), (59, 43549), (60, 43552), (66, 43681), (67, 43726), (68, 43861), (71, 43918), (72, 43933), (74, 43945), (76, 43978), (79, 44119), (81, 44203), (95, 44905), (104, 45121), (106, 45163), (107, 45172), (112, 45340), (115, 45457), (116, 45460), (120, 45511), (122, 45598), (125, 45670), (127, 45739),

Gene: BananaFence_95 Start: 40751, Stop: 44584, Start Num: 3

Candidate Starts for BananaFence_95:

(Start: 3 @40751 has 149 MA's), (4, 40805), (6, 40835), (19, 41258), (24, 41372), (25, 41414), (28, 41501), (29, 41519), (31, 41537), (41, 41756), (43, 41828), (46, 41906), (47, 41930), (50, 41999), (51,

42002), (52, 42104), (54, 42122), (55, 42155), (56, 42170), (59, 42248), (60, 42251), (66, 42380), (67, 42425), (68, 42560), (71, 42617), (72, 42632), (74, 42644), (76, 42677), (79, 42818), (81, 42902), (95, 43604), (104, 43820), (106, 43862), (107, 43871), (112, 44039), (115, 44156), (116, 44159), (120, 44210), (122, 44297), (125, 44369), (127, 44438),

Gene: Bangla1971_98 Start: 41095, Stop: 44895, Start Num: 3

Candidate Starts for Bangla1971_98:

(Start: 3 @41095 has 149 MA's), (4, 41149), (6, 41179), (10, 41248), (19, 41599), (24, 41713), (25, 41755), (28, 41812), (29, 41830), (31, 41848), (41, 42067), (43, 42139), (46, 42217), (47, 42241), (50, 42310), (51, 42313), (52, 42415), (54, 42433), (55, 42466), (56, 42481), (59, 42559), (60, 42562), (66, 42691), (67, 42736), (68, 42871), (71, 42928), (72, 42943), (74, 42955), (76, 42988), (79, 43129), (81, 43213), (95, 43915), (104, 44131), (106, 44173), (107, 44182), (112, 44350), (115, 44467), (116, 44470), (120, 44521), (122, 44608), (125, 44680), (127, 44749),

Gene: Basquiat_93 Start: 39640, Stop: 43455, Start Num: 3

Candidate Starts for Basquiat_93:

(Start: 3 @39640 has 149 MA's), (4, 39694), (6, 39724), (10, 39793), (19, 40144), (24, 40258), (25, 40300), (28, 40375), (29, 40393), (30, 40399), (31, 40411), (35, 40450), (41, 40627), (43, 40699), (46, 40777), (47, 40801), (50, 40870), (51, 40873), (52, 40975), (54, 40993), (55, 41026), (56, 41041), (59, 41119), (60, 41122), (66, 41251), (67, 41296), (68, 41431), (71, 41488), (72, 41503), (74, 41515), (76, 41548), (79, 41689), (81, 41773), (95, 42475), (104, 42691), (106, 42733), (107, 42742), (112, 42910), (115, 43027), (116, 43030), (120, 43081), (122, 43168), (125, 43240), (127, 43309),

Gene: BeanWater_88 Start: 40602, Stop: 44432, Start Num: 3

Candidate Starts for BeanWater_88:

(Start: 3 @40602 has 149 MA's), (4, 40656), (6, 40686), (19, 41106), (24, 41220), (25, 41262), (28, 41349), (29, 41367), (31, 41385), (41, 41604), (43, 41676), (46, 41754), (47, 41778), (50, 41847), (51, 41850), (52, 41952), (54, 41970), (55, 42003), (56, 42018), (59, 42096), (60, 42099), (66, 42228), (67, 42273), (68, 42408), (71, 42465), (72, 42480), (74, 42492), (76, 42525), (79, 42666), (81, 42750), (95, 43452), (104, 43668), (106, 43710), (107, 43719), (112, 43887), (115, 44004), (116, 44007), (120, 44058), (122, 44145), (125, 44217), (127, 44286),

Gene: BigCity_104 Start: 43426, Stop: 47226, Start Num: 3

Candidate Starts for BigCity_104:

(Start: 2 @43399 has 6 MA's), (Start: 3 @43426 has 149 MA's), (4, 43480), (6, 43510), (10, 43579), (19, 43930), (24, 44044), (25, 44086), (28, 44143), (29, 44161), (31, 44179), (41, 44398), (43, 44470), (46, 44548), (47, 44572), (50, 44641), (51, 44644), (52, 44746), (54, 44764), (55, 44797), (56, 44812), (59, 44890), (60, 44893), (66, 45022), (67, 45067), (68, 45202), (71, 45259), (72, 45274), (74, 45286), (76, 45319), (79, 45460), (81, 45544), (88, 45745), (95, 46246), (104, 46462), (106, 46504), (107, 46513), (112, 46681), (115, 46798), (116, 46801), (120, 46852), (122, 46939), (125, 47011), (127, 47080),

Gene: Bigswole_101 Start: 43774, Stop: 47574, Start Num: 3

Candidate Starts for Bigswole_101:

(Start: 2 @43747 has 6 MA's), (Start: 3 @43774 has 149 MA's), (4, 43828), (6, 43858), (10, 43927), (19, 44278), (24, 44392), (25, 44434), (28, 44491), (29, 44509), (31, 44527), (41, 44746), (43, 44818), (46, 44896), (47, 44920), (50, 44989), (51, 44992), (52, 45094), (54, 45112), (55, 45145), (56, 45160), (59, 45238), (60, 45241), (66, 45370), (67, 45415), (68, 45550), (71, 45607), (72, 45622), (74, 45634), (76, 45667), (79, 45808), (81, 45892), (95, 46594), (104, 46810), (106, 46852), (107, 46861), (112, 47029), (115, 47146), (116, 47149), (120, 47200), (122, 47287), (125, 47359), (127, 47428),

Gene: Bipolarisk_95 Start: 40916, Stop: 44734, Start Num: 3

Candidate Starts for Bipolarisk_95:

(Start: 3 @40916 has 149 MA's), (4, 40970), (6, 41000), (19, 41423), (24, 41537), (25, 41579), (28, 41651), (29, 41669), (31, 41687), (41, 41906), (43, 41978), (46, 42056), (47, 42080), (50, 42149), (51, 42152), (52, 42254), (54, 42272), (55, 42305), (56, 42320), (59, 42398), (60, 42401), (66, 42530), (67, 42575), (68, 42710), (71, 42767), (72, 42782), (74, 42794), (76, 42827), (79, 42968), (81, 43052), (95, 43754), (104, 43970), (106, 44012), (107, 44021), (112, 44189), (115, 44306), (116, 44309), (120, 44360), (122, 44447), (125, 44519), (127, 44588),

Gene: Blackbrain_91 Start: 39020, Stop: 43033, Start Num: 1

Candidate Starts for Blackbrain_91:

(Start: 1 @39020 has 18 MA's), (19, 39722), (24, 39836), (25, 39878), (28, 39953), (29, 39971), (30, 39977), (31, 39989), (35, 40028), (41, 40205), (43, 40277), (46, 40355), (47, 40379), (50, 40448), (51, 40451), (52, 40553), (54, 40571), (55, 40604), (56, 40619), (59, 40697), (60, 40700), (66, 40829), (67, 40874), (68, 41009), (71, 41066), (72, 41081), (74, 41093), (76, 41126), (79, 41267), (81, 41351), (95, 42053), (104, 42269), (106, 42311), (107, 42320), (112, 42488), (115, 42605), (116, 42608), (120, 42659), (122, 42746), (125, 42818), (127, 42887),

Gene: Blackdragon_92 Start: 40171, Stop: 44007, Start Num: 3

Candidate Starts for Blackdragon_92:

(Start: 3 @40171 has 149 MA's), (4, 40225), (6, 40255), (10, 40324), (19, 40675), (24, 40789), (25, 40831), (28, 40924), (29, 40942), (31, 40960), (41, 41179), (43, 41251), (46, 41329), (47, 41353), (50, 41422), (51, 41425), (52, 41527), (54, 41545), (55, 41578), (56, 41593), (59, 41671), (60, 41674), (66, 41803), (67, 41848), (68, 41983), (71, 42040), (72, 42055), (74, 42067), (76, 42100), (79, 42241), (81, 42325), (95, 43027), (104, 43243), (106, 43285), (107, 43294), (112, 43462), (115, 43579), (116, 43582), (120, 43633), (122, 43720), (125, 43792), (127, 43861),

Gene: Blubba_85 Start: 39561, Stop: 43364, Start Num: 3

Candidate Starts for Blubba_85:

(Start: 2 @39534 has 6 MA's), (Start: 3 @39561 has 149 MA's), (4, 39615), (6, 39645), (9, 39684), (19, 40065), (24, 40179), (25, 40221), (28, 40290), (29, 40308), (30, 40314), (31, 40326), (35, 40365), (41, 40542), (43, 40614), (46, 40692), (47, 40716), (50, 40785), (51, 40788), (52, 40890), (55, 40941), (56, 40956), (59, 41034), (60, 41037), (66, 41166), (67, 41211), (68, 41346), (71, 41403), (74, 41430), (76, 41463), (79, 41604), (81, 41688), (87, 41862), (92, 42225), (95, 42381), (104, 42597), (106, 42639), (107, 42648), (112, 42816), (115, 42933), (116, 42936), (120, 42987), (122, 43074), (125, 43146), (126, 43206), (127, 43218),

Gene: Bonray_96 Start: 41312, Stop: 45142, Start Num: 3

Candidate Starts for Bonray_96:

(Start: 3 @41312 has 149 MA's), (4, 41366), (6, 41396), (19, 41816), (24, 41930), (25, 41972), (28, 42059), (29, 42077), (31, 42095), (41, 42314), (43, 42386), (46, 42464), (47, 42488), (50, 42557), (51, 42560), (52, 42662), (54, 42680), (55, 42713), (56, 42728), (59, 42806), (60, 42809), (66, 42938), (67, 42983), (68, 43118), (71, 43175), (72, 43190), (74, 43202), (76, 43235), (79, 43376), (81, 43460), (95, 44162), (104, 44378), (106, 44420), (107, 44429), (112, 44597), (115, 44714), (116, 44717), (120, 44768), (122, 44855), (125, 44927), (127, 44996),

Gene: Bread_96 Start: 40972, Stop: 44802, Start Num: 3

Candidate Starts for Bread_96:

(Start: 2 @40945 has 6 MA's), (Start: 3 @40972 has 149 MA's), (4, 41026), (6, 41056), (10, 41125), (19, 41476), (24, 41590), (25, 41632), (28, 41719), (29, 41737), (31, 41755), (41, 41974), (43, 42046), (46, 42124), (47, 42148), (50, 42217), (51, 42220), (52, 42322), (54, 42340), (55, 42373), (56, 42388), (59, 42466), (60, 42469), (66, 42598), (67, 42643), (68, 42778), (71, 42835), (72, 42850), (74, 42862), (76, 42895), (79, 43036), (81, 43120), (95, 43822), (104, 44038), (106, 44080), (107, 44089), (112, 44257), (115, 44374), (116, 44377), (120, 44428), (122, 44515), (125, 44587), (127, 44656),

Gene: Breeniome_96 Start: 40168, Stop: 44028, Start Num: 2

Candidate Starts for Breeniome_96:

(Start: 2 @40168 has 6 MA's), (Start: 3 @40195 has 149 MA's), (4, 40249), (6, 40279), (10, 40348), (19, 40702), (24, 40816), (25, 40858), (28, 40945), (29, 40963), (31, 40981), (41, 41200), (43, 41272), (46, 41350), (47, 41374), (50, 41443), (51, 41446), (52, 41548), (54, 41566), (55, 41599), (56, 41614), (59, 41692), (60, 41695), (66, 41824), (67, 41869), (68, 42004), (71, 42061), (72, 42076), (74, 42088), (76, 42121), (79, 42262), (81, 42346), (95, 43048), (104, 43264), (106, 43306), (107, 43315), (112, 43483), (115, 43600), (116, 43603), (120, 43654), (122, 43741), (125, 43813), (127, 43882),

Gene: Burrough_96 Start: 41465, Stop: 45298, Start Num: 3

Candidate Starts for Burrough_96:

(Start: 3 @41465 has 149 MA's), (4, 41519), (6, 41549), (19, 41972), (24, 42086), (25, 42128), (28, 42215), (29, 42233), (31, 42251), (41, 42470), (43, 42542), (46, 42620), (47, 42644), (50, 42713), (51, 42716), (52, 42818), (54, 42836), (55, 42869), (56, 42884), (59, 42962), (60, 42965), (66, 43094), (67, 43139), (68, 43274), (71, 43331), (72, 43346), (74, 43358), (76, 43391), (79, 43532), (81, 43616), (95, 44318), (104, 44534), (106, 44576), (107, 44585), (112, 44753), (115, 44870), (116, 44873), (120, 44924), (122, 45011), (125, 45083), (127, 45152),

Gene: Bxz1_94 Start: 42516, Stop: 46349, Start Num: 3

Candidate Starts for Bxz1_94:

(Start: 3 @42516 has 149 MA's), (4, 42570), (6, 42600), (19, 43023), (24, 43137), (25, 43179), (28, 43266), (29, 43284), (31, 43302), (41, 43521), (43, 43593), (46, 43671), (47, 43695), (50, 43764), (51, 43767), (52, 43869), (54, 43887), (55, 43920), (56, 43935), (59, 44013), (60, 44016), (66, 44145), (67, 44190), (68, 44325), (71, 44382), (72, 44397), (74, 44409), (76, 44442), (79, 44583), (81, 44667), (95, 45369), (104, 45585), (106, 45627), (107, 45636), (112, 45804), (115, 45921), (116, 45924), (120, 45975), (122, 46062), (125, 46134), (127, 46203),

Gene: Cactojaque_91 Start: 39127, Stop: 43140, Start Num: 1

Candidate Starts for Cactojaque_91:

(Start: 1 @39127 has 18 MA's), (19, 39829), (24, 39943), (25, 39985), (28, 40060), (29, 40078), (30, 40084), (31, 40096), (35, 40135), (41, 40312), (43, 40384), (46, 40462), (47, 40486), (50, 40555), (51, 40558), (52, 40660), (54, 40678), (55, 40711), (56, 40726), (59, 40804), (60, 40807), (66, 40936), (67, 40981), (68, 41116), (71, 41173), (72, 41188), (74, 41200), (76, 41233), (79, 41374), (81, 41458), (95, 42160), (104, 42376), (106, 42418), (107, 42427), (112, 42595), (115, 42712), (116, 42715), (120, 42766), (122, 42853), (125, 42925), (127, 42994),

Gene: Cali_92 Start: 41479, Stop: 45315, Start Num: 3

Candidate Starts for Cali_92:

(Start: 3 @41479 has 149 MA's), (4, 41533), (6, 41563), (10, 41632), (19, 41983), (24, 42097), (25, 42139), (28, 42232), (29, 42250), (31, 42268), (41, 42487), (43, 42559), (46, 42637), (47, 42661), (50, 42730), (51, 42733), (52, 42835), (54, 42853), (55, 42886), (56, 42901), (59, 42979), (60, 42982), (66, 43111), (67, 43156), (68, 43291), (71, 43348), (72, 43363), (74, 43375), (76, 43408), (79, 43549), (81, 43633), (95, 44335), (104, 44551), (106, 44593), (107, 44602), (112, 44770), (115, 44887), (116, 44890), (120, 44941), (122, 45028), (125, 45100), (127, 45169),

Gene: Cane17_85 Start: 39634, Stop: 43437, Start Num: 3

Candidate Starts for Cane17_85:

(Start: 2 @39607 has 6 MA's), (Start: 3 @39634 has 149 MA's), (4, 39688), (6, 39718), (9, 39757), (19, 40138), (24, 40252), (25, 40294), (28, 40363), (29, 40381), (30, 40387), (31, 40399), (35, 40438), (41, 40615), (43, 40687), (46, 40765), (47, 40789), (50, 40858), (51, 40861), (52, 40963), (55, 41014), (56, 41029), (59, 41107), (60, 41110), (66, 41239), (67, 41284), (68, 41419), (71, 41476), (74, 41503), (76, 41536), (79, 41677), (81, 41761), (87, 41935), (92, 42298), (95, 42454), (104, 42670), (106, 42712), (107, 42721), (112, 42889), (115, 43006), (116, 43009), (120, 43060), (122, 43147), (125,

43219), (126, 43279), (127, 43291),

Gene: Capablanca_98 Start: 41335, Stop: 45165, Start Num: 3

Candidate Starts for Capablanca_98:

(Start: 3 @41335 has 149 MA's), (4, 41389), (6, 41419), (19, 41839), (24, 41953), (25, 41995), (28, 42082), (29, 42100), (31, 42118), (41, 42337), (43, 42409), (46, 42487), (47, 42511), (50, 42580), (51, 42583), (52, 42685), (54, 42703), (55, 42736), (56, 42751), (59, 42829), (60, 42832), (66, 42961), (67, 43006), (68, 43141), (71, 43198), (72, 43213), (74, 43225), (76, 43258), (79, 43399), (81, 43483), (95, 44185), (104, 44401), (106, 44443), (107, 44452), (112, 44620), (115, 44737), (116, 44740), (120, 44791), (122, 44878), (125, 44950), (127, 45019),

Gene: Caravan_91 Start: 40839, Stop: 44669, Start Num: 3

Candidate Starts for Caravan_91:

(Start: 3 @40839 has 149 MA's), (4, 40893), (6, 40923), (19, 41343), (24, 41457), (25, 41499), (28, 41586), (29, 41604), (31, 41622), (41, 41841), (43, 41913), (46, 41991), (47, 42015), (50, 42084), (51, 42087), (52, 42189), (54, 42207), (55, 42240), (56, 42255), (59, 42333), (60, 42336), (66, 42465), (67, 42510), (68, 42645), (71, 42702), (72, 42717), (74, 42729), (76, 42762), (79, 42903), (81, 42987), (95, 43689), (104, 43905), (106, 43947), (107, 43956), (112, 44124), (115, 44241), (116, 44244), (120, 44295), (122, 44382), (125, 44454), (127, 44523),

Gene: Catera_93 Start: 39292, Stop: 43305, Start Num: 1

Candidate Starts for Catera_93:

(Start: 1 @39292 has 18 MA's), (19, 39994), (24, 40108), (25, 40150), (28, 40225), (29, 40243), (30, 40249), (31, 40261), (35, 40300), (41, 40477), (43, 40549), (46, 40627), (47, 40651), (50, 40720), (51, 40723), (52, 40825), (54, 40843), (55, 40876), (56, 40891), (59, 40969), (60, 40972), (66, 41101), (67, 41146), (68, 41281), (71, 41338), (74, 41365), (76, 41398), (79, 41539), (81, 41623), (95, 42325), (104, 42541), (106, 42583), (107, 42592), (112, 42760), (115, 42877), (116, 42880), (120, 42931), (122, 43018), (125, 43090), (127, 43159),

Gene: Chargie21_93 Start: 39640, Stop: 43455, Start Num: 3

Candidate Starts for Chargie21_93:

(Start: 3 @39640 has 149 MA's), (4, 39694), (6, 39724), (10, 39793), (19, 40144), (24, 40258), (25, 40300), (28, 40375), (29, 40393), (30, 40399), (31, 40411), (35, 40450), (41, 40627), (43, 40699), (46, 40777), (47, 40801), (50, 40870), (51, 40873), (52, 40975), (54, 40993), (55, 41026), (56, 41041), (59, 41119), (60, 41122), (66, 41251), (67, 41296), (68, 41431), (71, 41488), (72, 41503), (74, 41515), (76, 41548), (79, 41689), (81, 41773), (95, 42475), (104, 42691), (106, 42733), (107, 42742), (112, 42910), (115, 43027), (116, 43030), (120, 43081), (122, 43168), (125, 43240), (127, 43309),

Gene: CharlieB_92 Start: 39477, Stop: 43313, Start Num: 3

Candidate Starts for CharlieB_92:

(Start: 3 @39477 has 149 MA's), (4, 39531), (6, 39561), (10, 39630), (19, 39981), (24, 40095), (25, 40137), (28, 40230), (29, 40248), (31, 40266), (41, 40485), (43, 40557), (46, 40635), (47, 40659), (50, 40728), (51, 40731), (52, 40833), (54, 40851), (55, 40884), (56, 40899), (59, 40977), (60, 40980), (66, 41109), (67, 41154), (68, 41289), (71, 41346), (72, 41361), (74, 41373), (76, 41406), (79, 41547), (81, 41631), (95, 42333), (104, 42549), (106, 42591), (107, 42600), (112, 42768), (115, 42885), (116, 42888), (120, 42939), (122, 43026), (125, 43098), (127, 43167),

Gene: ChaylaJr_91 Start: 38918, Stop: 42931, Start Num: 1

Candidate Starts for ChaylaJr_91:

(Start: 1 @38918 has 18 MA's), (19, 39620), (24, 39734), (25, 39776), (28, 39851), (29, 39869), (30, 39875), (31, 39887), (35, 39926), (41, 40103), (43, 40175), (46, 40253), (47, 40277), (50, 40346), (51, 40349), (52, 40451), (54, 40469), (55, 40502), (56, 40517), (59, 40595), (60, 40598), (66, 40727), (67, 40772), (68, 40907), (71, 40964), (72, 40979), (74, 40991), (76, 41024), (79, 41165), (81, 41249), (95,

41951), (104, 42167), (106, 42209), (107, 42218), (112, 42386), (115, 42503), (116, 42506), (120, 42557), (122, 42644), (125, 42716), (127, 42785),

Gene: ChickenPhender_92 Start: 39251, Stop: 43264, Start Num: 1

Candidate Starts for ChickenPhender_92:

(Start: 1 @39251 has 18 MA's), (19, 39953), (24, 40067), (25, 40109), (28, 40184), (29, 40202), (30, 40208), (31, 40220), (35, 40259), (41, 40436), (43, 40508), (46, 40586), (47, 40610), (50, 40679), (51, 40682), (52, 40784), (54, 40802), (55, 40835), (56, 40850), (59, 40928), (60, 40931), (66, 41060), (67, 41105), (68, 41240), (71, 41297), (72, 41312), (74, 41324), (76, 41357), (79, 41498), (81, 41582), (95, 42284), (104, 42500), (106, 42542), (107, 42551), (112, 42719), (115, 42836), (116, 42839), (120, 42890), (122, 42977), (125, 43049), (127, 43118),

Gene: Chomp_96 Start: 41935, Stop: 45735, Start Num: 3

Candidate Starts for Chomp_96:

(Start: 3 @41935 has 149 MA's), (4, 41989), (6, 42019), (10, 42088), (19, 42439), (24, 42553), (25, 42595), (28, 42652), (29, 42670), (31, 42688), (41, 42907), (43, 42979), (46, 43057), (47, 43081), (50, 43150), (51, 43153), (52, 43255), (54, 43273), (55, 43306), (56, 43321), (59, 43399), (60, 43402), (66, 43531), (67, 43576), (68, 43711), (71, 43768), (72, 43783), (74, 43795), (76, 43828), (79, 43969), (81, 44053), (95, 44755), (104, 44971), (106, 45013), (107, 45022), (112, 45190), (115, 45307), (116, 45310), (120, 45361), (122, 45448), (125, 45520), (127, 45589),

Gene: CindyLou_98 Start: 41976, Stop: 45776, Start Num: 3

Candidate Starts for CindyLou_98:

(Start: 3 @41976 has 149 MA's), (4, 42030), (6, 42060), (10, 42129), (19, 42480), (24, 42594), (25, 42636), (28, 42693), (29, 42711), (31, 42729), (41, 42948), (43, 43020), (46, 43098), (47, 43122), (50, 43191), (51, 43194), (52, 43296), (54, 43314), (55, 43347), (56, 43362), (59, 43440), (60, 43443), (66, 43572), (67, 43617), (68, 43752), (71, 43809), (72, 43824), (74, 43836), (76, 43869), (79, 44010), (81, 44094), (95, 44796), (104, 45012), (106, 45054), (107, 45063), (112, 45231), (115, 45348), (116, 45351), (120, 45402), (122, 45489), (125, 45561), (127, 45630),

Gene: Colt_86 Start: 40230, Stop: 44033, Start Num: 3

Candidate Starts for Colt_86:

(Start: 2 @40203 has 6 MA's), (Start: 3 @40230 has 149 MA's), (4, 40284), (6, 40314), (9, 40353), (19, 40734), (24, 40848), (25, 40890), (28, 40959), (29, 40977), (30, 40983), (31, 40995), (35, 41034), (41, 41211), (43, 41283), (46, 41361), (47, 41385), (50, 41454), (51, 41457), (52, 41559), (55, 41610), (56, 41625), (59, 41703), (60, 41706), (66, 41835), (67, 41880), (68, 42015), (71, 42072), (74, 42099), (76, 42132), (79, 42273), (81, 42357), (87, 42531), (92, 42894), (95, 43050), (104, 43266), (106, 43308), (107, 43317), (112, 43485), (115, 43602), (116, 43605), (120, 43656), (122, 43743), (125, 43815), (126, 43875), (127, 43887),

Gene: Concombre_103 Start: 43615, Stop: 47451, Start Num: 3

Candidate Starts for Concombre_103:

(Start: 2 @43588 has 6 MA's), (Start: 3 @43615 has 149 MA's), (4, 43669), (6, 43699), (10, 43768), (19, 44119), (24, 44233), (25, 44275), (28, 44368), (29, 44386), (31, 44404), (41, 44623), (43, 44695), (46, 44773), (47, 44797), (50, 44866), (51, 44869), (52, 44971), (54, 44989), (55, 45022), (56, 45037), (59, 45115), (60, 45118), (66, 45247), (67, 45292), (68, 45427), (71, 45484), (72, 45499), (74, 45511), (76, 45544), (79, 45685), (81, 45769), (95, 46471), (104, 46687), (106, 46729), (107, 46738), (112, 46906), (115, 47023), (116, 47026), (120, 47077), (122, 47164), (125, 47236), (127, 47305),

Gene: DTDevon_97 Start: 41535, Stop: 45335, Start Num: 3

Candidate Starts for DTDevon_97:

(Start: 2 @41508 has 6 MA's), (Start: 3 @41535 has 149 MA's), (4, 41589), (6, 41619), (10, 41688), (19, 42039), (24, 42153), (25, 42195), (28, 42252), (29, 42270), (31, 42288), (41, 42507), (43, 42579),

(46, 42657), (47, 42681), (50, 42750), (51, 42753), (52, 42855), (54, 42873), (55, 42906), (56, 42921), (59, 42999), (60, 43002), (66, 43131), (67, 43176), (68, 43311), (71, 43368), (72, 43383), (74, 43395), (76, 43428), (79, 43569), (81, 43653), (95, 44355), (104, 44571), (106, 44613), (107, 44622), (112, 44790), (115, 44907), (116, 44910), (120, 44961), (122, 45048), (125, 45120), (127, 45189),

Gene: Daffodil_101 Start: 41204, Stop: 45034, Start Num: 3

Candidate Starts for Daffodil_101:

(Start: 3 @41204 has 149 MA's), (4, 41258), (6, 41288), (19, 41708), (24, 41822), (25, 41864), (28, 41951), (29, 41969), (31, 41987), (41, 42206), (43, 42278), (46, 42356), (47, 42380), (50, 42449), (51, 42452), (52, 42554), (54, 42572), (55, 42605), (56, 42620), (59, 42698), (60, 42701), (66, 42830), (67, 42875), (68, 43010), (71, 43067), (72, 43082), (74, 43094), (76, 43127), (79, 43268), (81, 43352), (95, 44054), (104, 44270), (106, 44312), (107, 44321), (112, 44489), (115, 44606), (116, 44609), (120, 44660), (122, 44747), (125, 44819), (127, 44888),

Gene: Dandelion_103 Start: 43898, Stop: 47698, Start Num: 3

Candidate Starts for Dandelion_103:

(Start: 2 @43871 has 6 MA's), (Start: 3 @43898 has 149 MA's), (4, 43952), (6, 43982), (10, 44051), (19, 44402), (24, 44516), (25, 44558), (28, 44615), (29, 44633), (31, 44651), (41, 44870), (43, 44942), (46, 45020), (47, 45044), (50, 45113), (51, 45116), (52, 45218), (54, 45236), (55, 45269), (56, 45284), (59, 45362), (60, 45365), (66, 45494), (67, 45539), (68, 45674), (71, 45731), (72, 45746), (74, 45758), (76, 45791), (79, 45932), (81, 46016), (95, 46718), (104, 46934), (106, 46976), (107, 46985), (112, 47153), (115, 47270), (116, 47273), (120, 47324), (122, 47411), (125, 47483), (127, 47552),

Gene: Darko_96 Start: 41139, Stop: 44972, Start Num: 3

Candidate Starts for Darko_96:

(Start: 3 @41139 has 149 MA's), (4, 41193), (6, 41223), (19, 41646), (24, 41760), (25, 41802), (28, 41889), (29, 41907), (31, 41925), (41, 42144), (43, 42216), (46, 42294), (47, 42318), (50, 42387), (51, 42390), (52, 42492), (54, 42510), (55, 42543), (56, 42558), (59, 42636), (60, 42639), (66, 42768), (67, 42813), (68, 42948), (71, 43005), (72, 43020), (74, 43032), (76, 43065), (79, 43206), (81, 43290), (95, 43992), (104, 44208), (106, 44250), (107, 44259), (112, 44427), (115, 44544), (116, 44547), (120, 44598), (122, 44685), (125, 44757), (127, 44826),

Gene: Delilah_96 Start: 41205, Stop: 45035, Start Num: 3

Candidate Starts for Delilah_96:

(Start: 3 @41205 has 149 MA's), (4, 41259), (6, 41289), (19, 41709), (24, 41823), (25, 41865), (28, 41952), (29, 41970), (31, 41988), (41, 42207), (43, 42279), (46, 42357), (47, 42381), (50, 42450), (51, 42453), (52, 42555), (54, 42573), (55, 42606), (56, 42621), (59, 42699), (60, 42702), (66, 42831), (67, 42876), (68, 43011), (71, 43068), (72, 43083), (74, 43095), (76, 43128), (79, 43269), (81, 43353), (95, 44055), (104, 44271), (106, 44313), (107, 44322), (112, 44490), (115, 44607), (116, 44610), (120, 44661), (122, 44748), (125, 44820), (127, 44889),

Gene: Delylah_99 Start: 40998, Stop: 44828, Start Num: 3

Candidate Starts for Delylah_99:

(Start: 3 @40998 has 149 MA's), (4, 41052), (6, 41082), (19, 41502), (24, 41616), (25, 41658), (28, 41745), (29, 41763), (31, 41781), (41, 42000), (43, 42072), (46, 42150), (47, 42174), (50, 42243), (51, 42246), (52, 42348), (54, 42366), (55, 42399), (56, 42414), (59, 42492), (60, 42495), (66, 42624), (67, 42669), (68, 42804), (71, 42861), (72, 42876), (74, 42888), (76, 42921), (79, 43062), (81, 43146), (95, 43848), (104, 44064), (106, 44106), (107, 44115), (112, 44283), (115, 44400), (116, 44403), (120, 44454), (122, 44541), (125, 44613), (127, 44682),

Gene: Demodog_103 Start: 43615, Stop: 47451, Start Num: 3

Candidate Starts for Demodog_103:

(Start: 2 @43588 has 6 MA's), (Start: 3 @43615 has 149 MA's), (4, 43669), (6, 43699), (10, 43768), (19, 44119), (24, 44233), (25, 44275), (28, 44368), (29, 44386), (31, 44404), (41, 44623), (43, 44695), (46, 44773), (47, 44797), (50, 44866), (51, 44869), (52, 44971), (54, 44989), (55, 45022), (56, 45037), (59, 45115), (60, 45118), (66, 45247), (67, 45292), (68, 45427), (71, 45484), (72, 45499), (74, 45511), (76, 45544), (79, 45685), (81, 45769), (95, 46471), (104, 46687), (106, 46729), (107, 46738), (112, 46906), (115, 47023), (116, 47026), (120, 47077), (122, 47164), (125, 47236), (127, 47305),

Gene: Derek_97 Start: 41737, Stop: 45537, Start Num: 3

Candidate Starts for Derek_97:

(Start: 3 @41737 has 149 MA's), (4, 41791), (6, 41821), (10, 41890), (19, 42241), (24, 42355), (25, 42397), (28, 42454), (29, 42472), (31, 42490), (41, 42709), (43, 42781), (46, 42859), (47, 42883), (50, 42952), (51, 42955), (52, 43057), (54, 43075), (55, 43108), (56, 43123), (59, 43201), (60, 43204), (66, 43333), (67, 43378), (68, 43513), (71, 43570), (72, 43585), (74, 43597), (76, 43630), (79, 43771), (81, 43855), (95, 44557), (104, 44773), (106, 44815), (107, 44824), (112, 44992), (115, 45109), (116, 45112), (120, 45163), (122, 45250), (125, 45322), (127, 45391),

Gene: Dietrick_88 Start: 38954, Stop: 42967, Start Num: 1

Candidate Starts for Dietrick_88:

(Start: 1 @38954 has 18 MA's), (19, 39656), (24, 39770), (25, 39812), (28, 39887), (29, 39905), (30, 39911), (31, 39923), (35, 39962), (41, 40139), (43, 40211), (46, 40289), (47, 40313), (50, 40382), (51, 40385), (52, 40487), (54, 40505), (55, 40538), (56, 40553), (59, 40631), (60, 40634), (66, 40763), (67, 40808), (68, 40943), (71, 41000), (74, 41027), (76, 41060), (79, 41201), (81, 41285), (95, 41987), (104, 42203), (106, 42245), (107, 42254), (112, 42422), (115, 42539), (116, 42542), (120, 42593), (122, 42680), (125, 42752), (127, 42821),

Gene: DirtMonster_90 Start: 40233, Stop: 44069, Start Num: 3

Candidate Starts for DirtMonster_90:

(Start: 3 @40233 has 149 MA's), (4, 40287), (6, 40317), (10, 40386), (19, 40737), (24, 40851), (25, 40893), (28, 40986), (29, 41004), (31, 41022), (41, 41241), (43, 41313), (46, 41391), (47, 41415), (50, 41484), (51, 41487), (52, 41589), (54, 41607), (55, 41640), (56, 41655), (59, 41733), (60, 41736), (66, 41865), (67, 41910), (68, 42045), (71, 42102), (72, 42117), (74, 42129), (76, 42162), (79, 42303), (81, 42387), (95, 43089), (104, 43305), (106, 43347), (107, 43356), (112, 43524), (115, 43641), (116, 43644), (120, 43695), (122, 43782), (125, 43854), (127, 43923),

Gene: Domi_90 Start: 40533, Stop: 44378, Start Num: 3

Candidate Starts for Domi_90:

(Start: 3 @40533 has 149 MA's), (4, 40587), (6, 40617), (19, 41037), (24, 41151), (25, 41193), (28, 41295), (29, 41313), (31, 41331), (41, 41550), (43, 41622), (46, 41700), (47, 41724), (50, 41793), (51, 41796), (52, 41898), (54, 41916), (55, 41949), (56, 41964), (59, 42042), (60, 42045), (66, 42174), (67, 42219), (68, 42354), (71, 42411), (72, 42426), (74, 42438), (76, 42471), (79, 42612), (81, 42696), (95, 43398), (104, 43614), (106, 43656), (107, 43665), (112, 43833), (115, 43950), (116, 43953), (120, 44004), (122, 44091), (125, 44163), (127, 44232),

Gene: DrPhinkDaddy_95 Start: 41424, Stop: 45254, Start Num: 3

Candidate Starts for DrPhinkDaddy_95:

(Start: 2 @41397 has 6 MA's), (Start: 3 @41424 has 149 MA's), (4, 41478), (6, 41508), (10, 41577), (19, 41928), (24, 42042), (25, 42084), (28, 42171), (29, 42189), (31, 42207), (41, 42426), (43, 42498), (46, 42576), (47, 42600), (50, 42669), (51, 42672), (52, 42774), (54, 42792), (55, 42825), (56, 42840), (59, 42918), (60, 42921), (66, 43050), (67, 43095), (68, 43230), (71, 43287), (72, 43302), (74, 43314), (76, 43347), (79, 43488), (81, 43572), (95, 44274), (104, 44490), (106, 44532), (107, 44541), (112, 44709), (115, 44826), (116, 44829), (120, 44880), (122, 44967), (125, 45039), (127, 45108),

Gene: Drazdys_96 Start: 41002, Stop: 44835, Start Num: 3

Candidate Starts for Drazdys_96:

(Start: 3 @41002 has 149 MA's), (4, 41056), (6, 41086), (19, 41509), (24, 41623), (25, 41665), (28, 41752), (29, 41770), (31, 41788), (41, 42007), (43, 42079), (46, 42157), (47, 42181), (50, 42250), (51, 42253), (52, 42355), (54, 42373), (55, 42406), (56, 42421), (59, 42499), (60, 42502), (66, 42631), (67, 42676), (68, 42811), (71, 42868), (72, 42883), (74, 42895), (76, 42928), (79, 43069), (81, 43153), (95, 43855), (104, 44071), (106, 44113), (107, 44122), (112, 44290), (115, 44407), (116, 44410), (120, 44461), (122, 44548), (125, 44620), (127, 44689),

Gene: ET08_85 Start: 39976, Stop: 43821, Start Num: 3

Candidate Starts for ET08_85:

(Start: 3 @39976 has 149 MA's), (4, 40030), (6, 40060), (19, 40480), (24, 40594), (25, 40636), (28, 40738), (29, 40756), (31, 40774), (41, 40993), (43, 41065), (46, 41143), (47, 41167), (50, 41236), (51, 41239), (52, 41341), (54, 41359), (55, 41392), (56, 41407), (59, 41485), (60, 41488), (66, 41617), (67, 41662), (68, 41797), (71, 41854), (72, 41869), (74, 41881), (76, 41914), (79, 42055), (81, 42139), (95, 42841), (104, 43057), (106, 43099), (107, 43108), (112, 43276), (115, 43393), (116, 43396), (120, 43447), (122, 43534), (125, 43606), (127, 43675),

Gene: EasyJones_99 Start: 40310, Stop: 44323, Start Num: 1

Candidate Starts for EasyJones_99:

(Start: 1 @40310 has 18 MA's), (19, 41012), (24, 41126), (25, 41168), (28, 41243), (29, 41261), (30, 41267), (31, 41279), (35, 41318), (41, 41495), (43, 41567), (46, 41645), (47, 41669), (50, 41738), (51, 41741), (52, 41843), (54, 41861), (55, 41894), (56, 41909), (59, 41987), (60, 41990), (66, 42119), (67, 42164), (68, 42299), (71, 42356), (72, 42371), (74, 42383), (76, 42416), (79, 42557), (81, 42641), (95, 43343), (104, 43559), (106, 43601), (107, 43610), (112, 43778), (115, 43895), (116, 43898), (120, 43949), (122, 44036), (125, 44108), (127, 44177),

Gene: EggyFarm_104 Start: 43426, Stop: 47226, Start Num: 3

Candidate Starts for EggyFarm_104:

(Start: 2 @43399 has 6 MA's), (Start: 3 @43426 has 149 MA's), (4, 43480), (6, 43510), (10, 43579), (19, 43930), (24, 44044), (25, 44086), (28, 44143), (29, 44161), (31, 44179), (41, 44398), (43, 44470), (46, 44548), (47, 44572), (50, 44641), (51, 44644), (52, 44746), (54, 44764), (55, 44797), (56, 44812), (59, 44890), (60, 44893), (66, 45022), (67, 45067), (68, 45202), (71, 45259), (72, 45274), (74, 45286), (76, 45319), (79, 45460), (81, 45544), (88, 45745), (95, 46246), (104, 46462), (106, 46504), (107, 46513), (112, 46681), (115, 46798), (116, 46801), (120, 46852), (122, 46939), (125, 47011), (127, 47080),

Gene: EmToTheThree_99 Start: 42656, Stop: 46486, Start Num: 3

Candidate Starts for EmToTheThree_99:

(Start: 3 @42656 has 149 MA's), (4, 42710), (6, 42740), (19, 43160), (24, 43274), (25, 43316), (28, 43403), (29, 43421), (31, 43439), (41, 43658), (43, 43730), (46, 43808), (47, 43832), (50, 43901), (51, 43904), (52, 44006), (54, 44024), (55, 44057), (56, 44072), (59, 44150), (60, 44153), (66, 44282), (67, 44327), (68, 44462), (71, 44519), (72, 44534), (74, 44546), (76, 44579), (79, 44720), (81, 44804), (95, 45506), (104, 45722), (106, 45764), (107, 45773), (112, 45941), (115, 46058), (116, 46061), (120, 46112), (122, 46199), (125, 46271), (127, 46340),

Gene: EmmaElysia_96 Start: 40214, Stop: 44014, Start Num: 3

Candidate Starts for EmmaElysia_96:

(Start: 3 @40214 has 149 MA's), (4, 40268), (6, 40298), (10, 40367), (19, 40718), (24, 40832), (25, 40874), (28, 40931), (29, 40949), (31, 40967), (41, 41186), (43, 41258), (46, 41336), (47, 41360), (50, 41429), (51, 41432), (52, 41534), (54, 41552), (55, 41585), (56, 41600), (59, 41678), (60, 41681), (66, 41810), (67, 41855), (68, 41990), (71, 42047), (72, 42062), (74, 42074), (76, 42107), (79, 42248), (81, 42332), (95, 43034), (104, 43250), (106, 43292), (107, 43301), (112, 43469), (115, 43586), (116, 43589), (120, 43640), (122, 43727), (125, 43799), (127, 43868),

Gene: Erdmann_97 Start: 41205, Stop: 45035, Start Num: 3

Candidate Starts for Erdmann_97:

(Start: 3 @41205 has 149 MA's), (4, 41259), (6, 41289), (19, 41709), (24, 41823), (25, 41865), (28, 41952), (29, 41970), (31, 41988), (41, 42207), (43, 42279), (46, 42357), (47, 42381), (50, 42450), (51, 42453), (52, 42555), (54, 42573), (55, 42606), (56, 42621), (59, 42699), (60, 42702), (66, 42831), (67, 42876), (68, 43011), (71, 43068), (72, 43083), (74, 43095), (76, 43128), (79, 43269), (81, 43353), (95, 44055), (104, 44271), (106, 44313), (107, 44322), (112, 44490), (115, 44607), (116, 44610), (120, 44661), (122, 44748), (125, 44820), (127, 44889),

Gene: ErnieJ_92 Start: 39232, Stop: 43245, Start Num: 1

Candidate Starts for ErnieJ_92:

(Start: 1 @39232 has 18 MA's), (19, 39934), (24, 40048), (25, 40090), (28, 40165), (29, 40183), (30, 40189), (31, 40201), (35, 40240), (41, 40417), (43, 40489), (46, 40567), (47, 40591), (50, 40660), (51, 40663), (52, 40765), (54, 40783), (55, 40816), (56, 40831), (59, 40909), (60, 40912), (66, 41041), (67, 41086), (68, 41221), (71, 41278), (72, 41293), (74, 41305), (76, 41338), (79, 41479), (81, 41563), (95, 42265), (104, 42481), (106, 42523), (107, 42532), (112, 42700), (115, 42817), (116, 42820), (120, 42871), (122, 42958), (125, 43030), (127, 43099),

Gene: Essence_94 Start: 41201, Stop: 45001, Start Num: 3

Candidate Starts for Essence_94:

(Start: 3 @41201 has 149 MA's), (4, 41255), (6, 41285), (10, 41354), (19, 41705), (24, 41819), (25, 41861), (28, 41918), (29, 41936), (31, 41954), (41, 42173), (43, 42245), (46, 42323), (47, 42347), (50, 42416), (51, 42419), (52, 42521), (54, 42539), (55, 42572), (56, 42587), (59, 42665), (60, 42668), (66, 42797), (67, 42842), (68, 42977), (71, 43034), (72, 43049), (74, 43061), (76, 43094), (79, 43235), (81, 43319), (95, 44021), (104, 44237), (106, 44279), (107, 44288), (112, 44456), (115, 44573), (116, 44576), (120, 44627), (122, 44714), (125, 44786), (127, 44855),

Gene: Ewok_97 Start: 40832, Stop: 44662, Start Num: 3

Candidate Starts for Ewok_97:

(Start: 3 @40832 has 149 MA's), (4, 40886), (6, 40916), (19, 41336), (24, 41450), (25, 41492), (28, 41579), (29, 41597), (31, 41615), (41, 41834), (43, 41906), (46, 41984), (47, 42008), (50, 42077), (51, 42080), (52, 42182), (54, 42200), (55, 42233), (56, 42248), (59, 42326), (60, 42329), (66, 42458), (67, 42503), (68, 42638), (71, 42695), (72, 42710), (74, 42722), (76, 42755), (79, 42896), (81, 42980), (95, 43682), (104, 43898), (106, 43940), (107, 43949), (112, 44117), (115, 44234), (116, 44237), (120, 44288), (122, 44375), (125, 44447), (127, 44516),

Gene: Flabslab_91 Start: 38988, Stop: 43001, Start Num: 1

Candidate Starts for Flabslab_91:

(Start: 1 @38988 has 18 MA's), (19, 39690), (24, 39804), (25, 39846), (28, 39921), (29, 39939), (30, 39945), (31, 39957), (35, 39996), (41, 40173), (43, 40245), (46, 40323), (47, 40347), (50, 40416), (51, 40419), (52, 40521), (54, 40539), (55, 40572), (56, 40587), (59, 40665), (60, 40668), (66, 40797), (67, 40842), (68, 40977), (71, 41034), (72, 41049), (74, 41061), (76, 41094), (79, 41235), (81, 41319), (95, 42021), (104, 42237), (106, 42279), (107, 42288), (112, 42456), (115, 42573), (116, 42576), (120, 42627), (122, 42714), (125, 42786), (127, 42855),

Gene: Fludd_97 Start: 40087, Stop: 43887, Start Num: 3

Candidate Starts for Fludd_97:

(Start: 3 @40087 has 149 MA's), (4, 40141), (6, 40171), (10, 40240), (19, 40591), (24, 40705), (25, 40747), (28, 40804), (29, 40822), (31, 40840), (41, 41059), (43, 41131), (46, 41209), (47, 41233), (50, 41302), (51, 41305), (52, 41407), (54, 41425), (55, 41458), (56, 41473), (59, 41551), (60, 41554), (66, 41683), (67, 41728), (68, 41863), (71, 41920), (72, 41935), (74, 41947), (76, 41980), (79, 42121), (81, 42205), (95, 42907), (104, 43123), (106, 43165), (107, 43174), (112, 43342), (115, 43459), (116,

43462), (120, 43513), (122, 43600), (125, 43672), (127, 43741),

Gene: FoxtrotP1_96 Start: 42375, Stop: 46205, Start Num: 3

Candidate Starts for FoxtrotP1_96:

(Start: 3 @42375 has 149 MA's), (4, 42429), (6, 42459), (19, 42879), (24, 42993), (25, 43035), (28, 43122), (29, 43140), (31, 43158), (41, 43377), (43, 43449), (46, 43527), (47, 43551), (50, 43620), (51, 43623), (52, 43725), (54, 43743), (55, 43776), (56, 43791), (59, 43869), (60, 43872), (66, 44001), (67, 44046), (68, 44181), (71, 44238), (72, 44253), (74, 44265), (76, 44298), (79, 44439), (81, 44523), (95, 45225), (104, 45441), (106, 45483), (107, 45492), (112, 45660), (115, 45777), (116, 45780), (120, 45831), (122, 45918), (125, 45990), (127, 46059),

Gene: FrayBell_102 Start: 42654, Stop: 46487, Start Num: 3

Candidate Starts for FrayBell_102:

(Start: 3 @42654 has 149 MA's), (4, 42708), (6, 42738), (19, 43161), (24, 43275), (25, 43317), (28, 43404), (29, 43422), (31, 43440), (41, 43659), (43, 43731), (46, 43809), (47, 43833), (50, 43902), (51, 43905), (52, 44007), (54, 44025), (55, 44058), (56, 44073), (59, 44151), (60, 44154), (66, 44283), (67, 44328), (68, 44463), (71, 44520), (72, 44535), (74, 44547), (76, 44580), (79, 44721), (81, 44805), (95, 45507), (104, 45723), (106, 45765), (107, 45774), (112, 45942), (115, 46059), (116, 46062), (120, 46113), (122, 46200), (125, 46272), (127, 46341),

Gene: FudgeTart_96 Start: 40398, Stop: 44243, Start Num: 3

Candidate Starts for FudgeTart_96:

(Start: 3 @40398 has 149 MA's), (4, 40452), (6, 40482), (19, 40902), (24, 41016), (25, 41058), (28, 41160), (29, 41178), (31, 41196), (41, 41415), (43, 41487), (46, 41565), (47, 41589), (50, 41658), (51, 41661), (52, 41763), (54, 41781), (55, 41814), (56, 41829), (59, 41907), (60, 41910), (66, 42039), (67, 42084), (68, 42219), (71, 42276), (72, 42291), (74, 42303), (76, 42336), (79, 42477), (81, 42561), (95, 43263), (104, 43479), (106, 43521), (107, 43530), (112, 43698), (115, 43815), (116, 43818), (120, 43869), (122, 43956), (125, 44028), (127, 44097),

Gene: Gabriel_98 Start: 40607, Stop: 44407, Start Num: 3

Candidate Starts for Gabriel_98:

(Start: 3 @40607 has 149 MA's), (4, 40661), (6, 40691), (19, 41111), (24, 41225), (25, 41267), (28, 41324), (29, 41342), (31, 41360), (41, 41579), (43, 41651), (46, 41729), (47, 41753), (50, 41822), (51, 41825), (52, 41927), (54, 41945), (55, 41978), (56, 41993), (59, 42071), (60, 42074), (66, 42203), (67, 42248), (68, 42383), (71, 42440), (72, 42455), (74, 42467), (76, 42500), (79, 42641), (81, 42725), (95, 43427), (104, 43643), (106, 43685), (107, 43694), (112, 43862), (115, 43979), (116, 43982), (120, 44033), (122, 44120), (125, 44192), (127, 44261),

Gene: Gamgam_97 Start: 40647, Stop: 44447, Start Num: 3

Candidate Starts for Gamgam_97:

(Start: 3 @40647 has 149 MA's), (4, 40701), (6, 40731), (10, 40800), (19, 41151), (24, 41265), (25, 41307), (28, 41364), (29, 41382), (31, 41400), (41, 41619), (43, 41691), (46, 41769), (47, 41793), (50, 41862), (51, 41865), (52, 41967), (54, 41985), (55, 42018), (56, 42033), (59, 42111), (60, 42114), (66, 42243), (67, 42288), (68, 42423), (71, 42480), (72, 42495), (74, 42507), (76, 42540), (79, 42681), (81, 42765), (95, 43467), (104, 43683), (106, 43725), (107, 43734), (112, 43902), (115, 44019), (116, 44022), (120, 44073), (122, 44160), (125, 44232), (127, 44301),

Gene: Ghost_96 Start: 40647, Stop: 44447, Start Num: 3

Candidate Starts for Ghost_96:

(Start: 3 @40647 has 149 MA's), (4, 40701), (6, 40731), (10, 40800), (19, 41151), (24, 41265), (25, 41307), (28, 41364), (29, 41382), (31, 41400), (41, 41619), (43, 41691), (46, 41769), (47, 41793), (50, 41862), (51, 41865), (52, 41967), (54, 41985), (55, 42018), (56, 42033), (59, 42111), (60, 42114), (66, 42243), (67, 42288), (68, 42423), (71, 42480), (72, 42495), (74, 42507), (76, 42540), (79, 42681), (81,

42765), (95, 43467), (104, 43683), (106, 43725), (107, 43734), (112, 43902), (115, 44019), (116, 44022), (120, 44073), (122, 44160), (125, 44232), (127, 44301),

Gene: Gizmo_100 Start: 42352, Stop: 46182, Start Num: 3

Candidate Starts for Gizmo_100:

(Start: 3 @42352 has 149 MA's), (4, 42406), (6, 42436), (19, 42856), (24, 42970), (25, 43012), (28, 43099), (29, 43117), (31, 43135), (41, 43354), (43, 43426), (46, 43504), (47, 43528), (50, 43597), (51, 43600), (52, 43702), (54, 43720), (55, 43753), (56, 43768), (59, 43846), (60, 43849), (66, 43978), (67, 44023), (68, 44158), (71, 44215), (72, 44230), (74, 44242), (76, 44275), (79, 44416), (81, 44500), (95, 45202), (104, 45418), (106, 45460), (107, 45469), (112, 45637), (115, 45754), (116, 45757), (120, 45808), (122, 45895), (125, 45967), (127, 46036),

Gene: Grasshills_103 Start: 43426, Stop: 47226, Start Num: 3

Candidate Starts for Grasshills_103:

(Start: 2 @43399 has 6 MA's), (Start: 3 @43426 has 149 MA's), (4, 43480), (6, 43510), (10, 43579), (19, 43930), (24, 44044), (25, 44086), (28, 44143), (29, 44161), (31, 44179), (41, 44398), (43, 44470), (46, 44548), (47, 44572), (50, 44641), (51, 44644), (52, 44746), (54, 44764), (55, 44797), (56, 44812), (59, 44890), (60, 44893), (66, 45022), (67, 45067), (68, 45202), (71, 45259), (72, 45274), (74, 45286), (76, 45319), (79, 45460), (81, 45544), (88, 45745), (95, 46246), (104, 46462), (106, 46504), (107, 46513), (112, 46681), (115, 46798), (116, 46801), (120, 46852), (122, 46939), (125, 47011), (127, 47080),

Gene: Greely_98 Start: 42373, Stop: 46023, Start Num: 3

Candidate Starts for Greely_98:

(Start: 3 @42373 has 149 MA's), (5, 42454), (8, 42481), (9, 42496), (12, 42565), (14, 42796), (16, 42859), (17, 42877), (21, 42943), (22, 42982), (23, 43006), (24, 43051), (25, 43090), (28, 43216), (29, 43234), (32, 43255), (34, 43285), (36, 43426), (37, 43435), (38, 43438), (42, 43549), (44, 43603), (45, 43621), (49, 43729), (51, 43759), (55, 43909), (62, 44014), (63, 44059), (64, 44104), (68, 44269), (69, 44281), (70, 44302), (71, 44326), (80, 44527), (90, 44893), (94, 45061), (95, 45193), (97, 45220), (98, 45235), (102, 45328), (103, 45331), (108, 45454), (109, 45481), (118, 45649), (121, 45739), (123, 45772), (124, 45805), (127, 45877),

Gene: Grungle_84 Start: 38029, Stop: 41865, Start Num: 3

Candidate Starts for Grungle_84:

(Start: 3 @38029 has 149 MA's), (4, 38083), (6, 38113), (10, 38182), (19, 38533), (24, 38647), (25, 38689), (28, 38782), (29, 38800), (31, 38818), (41, 39037), (43, 39109), (46, 39187), (47, 39211), (50, 39280), (51, 39283), (52, 39385), (54, 39403), (55, 39436), (56, 39451), (59, 39529), (60, 39532), (66, 39661), (67, 39706), (68, 39841), (71, 39898), (72, 39913), (74, 39925), (76, 39958), (79, 40099), (81, 40183), (95, 40885), (104, 41101), (106, 41143), (107, 41152), (112, 41320), (115, 41437), (116, 41440), (120, 41491), (122, 41578), (125, 41650), (127, 41719),

Gene: Guwapp_96 Start: 40742, Stop: 44572, Start Num: 3

Candidate Starts for Guwapp_96:

(Start: 3 @40742 has 149 MA's), (4, 40796), (6, 40826), (10, 40895), (19, 41246), (24, 41360), (25, 41402), (28, 41489), (29, 41507), (31, 41525), (41, 41744), (43, 41816), (46, 41894), (47, 41918), (50, 41987), (51, 41990), (52, 42092), (54, 42110), (55, 42143), (56, 42158), (59, 42236), (60, 42239), (66, 42368), (67, 42413), (68, 42548), (71, 42605), (72, 42620), (74, 42632), (76, 42665), (79, 42806), (81, 42890), (95, 43592), (104, 43808), (106, 43850), (107, 43859), (112, 44027), (115, 44144), (116, 44147), (120, 44198), (122, 44285), (125, 44357), (127, 44426),

Gene: Halldule_90 Start: 39059, Stop: 42895, Start Num: 3

Candidate Starts for Halldule_90:

(Start: 3 @39059 has 149 MA's), (4, 39113), (6, 39143), (10, 39212), (19, 39563), (24, 39677), (25, 39719), (28, 39812), (29, 39830), (31, 39848), (41, 40067), (43, 40139), (46, 40217), (47, 40241), (50, 40310), (51, 40313), (52, 40415), (54, 40433), (55, 40466), (56, 40481), (59, 40559), (60, 40562), (66, 40691), (67, 40736), (68, 40871), (71, 40928), (72, 40943), (74, 40955), (76, 40988), (79, 41129), (81, 41213), (95, 41915), (104, 42131), (106, 42173), (107, 42182), (112, 42350), (115, 42467), (116, 42470), (120, 42521), (122, 42608), (125, 42680), (127, 42749),

Gene: HyRo_88 Start: 39381, Stop: 43394, Start Num: 1

Candidate Starts for HyRo_88:

(Start: 1 @39381 has 18 MA's), (13, 39849), (19, 40083), (24, 40197), (25, 40239), (28, 40314), (29, 40332), (30, 40338), (31, 40350), (35, 40389), (41, 40566), (43, 40638), (46, 40716), (47, 40740), (50, 40809), (51, 40812), (52, 40914), (54, 40932), (55, 40965), (56, 40980), (59, 41058), (60, 41061), (66, 41190), (67, 41235), (68, 41370), (71, 41427), (74, 41454), (76, 41487), (79, 41628), (81, 41712), (95, 42414), (104, 42630), (106, 42672), (107, 42681), (112, 42849), (115, 42966), (116, 42969), (120, 43020), (122, 43107), (125, 43179), (127, 43248),

Gene: I3_102 Start: 41529, Stop: 45329, Start Num: 3

Candidate Starts for I3_102:

(Start: 2 @41502 has 6 MA's), (Start: 3 @41529 has 149 MA's), (4, 41583), (6, 41613), (10, 41682), (19, 42033), (24, 42147), (25, 42189), (28, 42246), (29, 42264), (31, 42282), (41, 42501), (43, 42573), (46, 42651), (47, 42675), (50, 42744), (51, 42747), (52, 42849), (54, 42867), (55, 42900), (56, 42915), (59, 42993), (60, 42996), (66, 43125), (67, 43170), (68, 43305), (71, 43362), (72, 43377), (74, 43389), (76, 43422), (79, 43563), (81, 43647), (95, 44349), (104, 44565), (106, 44607), (107, 44616), (112, 44784), (115, 44901), (116, 44904), (120, 44955), (122, 45042), (125, 45114), (127, 45183),

Gene: IkeLoa_90 Start: 39734, Stop: 43564, Start Num: 3

Candidate Starts for IkeLoa_90:

(Start: 2 @39707 has 6 MA's), (Start: 3 @39734 has 149 MA's), (4, 39788), (6, 39818), (10, 39887), (19, 40238), (24, 40352), (25, 40394), (28, 40481), (29, 40499), (31, 40517), (41, 40736), (43, 40808), (46, 40886), (47, 40910), (50, 40979), (51, 40982), (52, 41084), (54, 41102), (55, 41135), (56, 41150), (59, 41228), (60, 41231), (66, 41360), (67, 41405), (68, 41540), (71, 41597), (72, 41612), (74, 41624), (76, 41657), (79, 41798), (81, 41882), (95, 42584), (104, 42800), (106, 42842), (107, 42851), (112, 43019), (115, 43136), (116, 43139), (120, 43190), (122, 43277), (125, 43349), (127, 43418),

Gene: InigoMontoya_98 Start: 40608, Stop: 44408, Start Num: 3

Candidate Starts for InigoMontoya_98:

(Start: 3 @40608 has 149 MA's), (4, 40662), (6, 40692), (10, 40761), (19, 41112), (24, 41226), (25, 41268), (28, 41325), (29, 41343), (31, 41361), (41, 41580), (43, 41652), (46, 41730), (47, 41754), (50, 41823), (51, 41826), (52, 41928), (54, 41946), (55, 41979), (56, 41994), (59, 42072), (60, 42075), (66, 42204), (67, 42249), (68, 42384), (71, 42441), (72, 42456), (74, 42468), (76, 42501), (79, 42642), (81, 42726), (95, 43428), (104, 43644), (106, 43686), (107, 43695), (112, 43863), (115, 43980), (116, 43983), (120, 44034), (122, 44121), (125, 44193), (127, 44262),

Gene: InterFolia_105 Start: 43589, Stop: 47422, Start Num: 3

Candidate Starts for InterFolia_105:

(Start: 2 @43562 has 6 MA's), (Start: 3 @43589 has 149 MA's), (4, 43643), (6, 43673), (19, 44096), (24, 44210), (25, 44252), (28, 44339), (29, 44357), (31, 44375), (41, 44594), (43, 44666), (46, 44744), (47, 44768), (50, 44837), (51, 44840), (52, 44942), (54, 44960), (55, 44993), (56, 45008), (59, 45086), (60, 45089), (66, 45218), (67, 45263), (68, 45398), (71, 45455), (72, 45470), (74, 45482), (76, 45515), (79, 45656), (81, 45740), (95, 46442), (104, 46658), (106, 46700), (107, 46709), (112, 46877), (115, 46994), (116, 46997), (120, 47048), (122, 47135), (125, 47207), (127, 47276),

Gene: Iota_91 Start: 40388, Stop: 44224, Start Num: 3

Candidate Starts for Iota_91:

(Start: 3 @40388 has 149 MA's), (4, 40442), (6, 40472), (10, 40541), (19, 40892), (24, 41006), (25, 41048), (28, 41141), (29, 41159), (31, 41177), (41, 41396), (43, 41468), (46, 41546), (47, 41570), (50, 41639), (51, 41642), (52, 41744), (54, 41762), (55, 41795), (56, 41810), (59, 41888), (60, 41891), (66, 42020), (67, 42065), (68, 42200), (71, 42257), (72, 42272), (74, 42284), (76, 42317), (79, 42458), (81, 42542), (95, 43244), (104, 43460), (106, 43502), (107, 43511), (112, 43679), (115, 43796), (116, 43799), (120, 43850), (122, 43937), (125, 44009), (127, 44078),

Gene: Issimir_95 Start: 41148, Stop: 44978, Start Num: 3

Candidate Starts for Issimir_95:

(Start: 3 @41148 has 149 MA's), (4, 41202), (6, 41232), (19, 41652), (24, 41766), (25, 41808), (28, 41895), (29, 41913), (31, 41931), (41, 42150), (43, 42222), (46, 42300), (47, 42324), (50, 42393), (51, 42396), (52, 42498), (54, 42516), (55, 42549), (56, 42564), (59, 42642), (60, 42645), (66, 42774), (67, 42819), (68, 42954), (71, 43011), (72, 43026), (74, 43038), (76, 43071), (79, 43212), (81, 43296), (95, 43998), (104, 44214), (106, 44256), (107, 44265), (112, 44433), (115, 44550), (116, 44553), (120, 44604), (122, 44691), (125, 44763), (127, 44832),

Gene: Izajani_96 Start: 41385, Stop: 45215, Start Num: 3

Candidate Starts for Izajani_96:

(Start: 2 @41358 has 6 MA's), (Start: 3 @41385 has 149 MA's), (4, 41439), (6, 41469), (10, 41538), (19, 41889), (24, 42003), (25, 42045), (28, 42132), (29, 42150), (31, 42168), (41, 42387), (43, 42459), (46, 42537), (47, 42561), (50, 42630), (51, 42633), (52, 42735), (54, 42753), (55, 42786), (56, 42801), (59, 42879), (60, 42882), (66, 43011), (67, 43056), (68, 43191), (71, 43248), (72, 43263), (74, 43275), (76, 43308), (79, 43449), (81, 43533), (95, 44235), (104, 44451), (106, 44493), (107, 44502), (112, 44670), (115, 44787), (116, 44790), (120, 44841), (122, 44928), (125, 45000), (127, 45069),

Gene: JPickles_95 Start: 39878, Stop: 43678, Start Num: 3

Candidate Starts for JPickles_95:

(Start: 3 @39878 has 149 MA's), (4, 39932), (6, 39962), (10, 40031), (19, 40382), (24, 40496), (25, 40538), (28, 40595), (29, 40613), (31, 40631), (41, 40850), (43, 40922), (46, 41000), (47, 41024), (50, 41093), (51, 41096), (52, 41198), (54, 41216), (55, 41249), (56, 41264), (59, 41342), (60, 41345), (66, 41474), (67, 41519), (68, 41654), (71, 41711), (72, 41726), (74, 41738), (76, 41771), (79, 41912), (81, 41996), (95, 42698), (104, 42914), (106, 42956), (107, 42965), (112, 43133), (115, 43250), (116, 43253), (120, 43304), (122, 43391), (125, 43463), (127, 43532),

Gene: Janiyra_98 Start: 40480, Stop: 44493, Start Num: 1

Candidate Starts for Janiyra_98:

(Start: 1 @40480 has 18 MA's), (19, 41182), (24, 41296), (25, 41338), (28, 41413), (29, 41431), (30, 41437), (31, 41449), (35, 41488), (41, 41665), (43, 41737), (46, 41815), (47, 41839), (50, 41908), (51, 41911), (52, 42013), (54, 42031), (55, 42064), (56, 42079), (59, 42157), (60, 42160), (66, 42289), (67, 42334), (68, 42469), (71, 42526), (72, 42541), (74, 42553), (76, 42586), (79, 42727), (81, 42811), (95, 43513), (104, 43729), (106, 43771), (107, 43780), (112, 43948), (115, 44065), (116, 44068), (120, 44119), (122, 44206), (125, 44278), (127, 44347),

Gene: JayJay_98 Start: 42673, Stop: 46509, Start Num: 3

Candidate Starts for JayJay_98:

(Start: 2 @42646 has 6 MA's), (Start: 3 @42673 has 149 MA's), (4, 42727), (6, 42757), (10, 42826), (19, 43177), (24, 43291), (25, 43333), (28, 43426), (29, 43444), (31, 43462), (41, 43681), (43, 43753), (46, 43831), (47, 43855), (50, 43924), (51, 43927), (52, 44029), (54, 44047), (55, 44080), (56, 44095), (59, 44173), (60, 44176), (66, 44305), (67, 44350), (68, 44485), (71, 44542), (72, 44557), (74, 44569), (76, 44602), (79, 44743), (81, 44827), (95, 45529), (104, 45745), (106, 45787), (107, 45796), (112, 45964), (115, 46081), (116, 46084), (120, 46135), (122, 46222), (125, 46294), (127, 46363),

Gene: Jaygup_97 Start: 41403, Stop: 45203, Start Num: 3

Candidate Starts for Jaygup_97:

(Start: 3 @41403 has 149 MA's), (4, 41457), (6, 41487), (10, 41556), (19, 41907), (24, 42021), (25, 42063), (28, 42120), (29, 42138), (31, 42156), (41, 42375), (43, 42447), (46, 42525), (47, 42549), (50, 42618), (51, 42621), (52, 42723), (54, 42741), (55, 42774), (56, 42789), (59, 42867), (60, 42870), (66, 42999), (67, 43044), (68, 43179), (71, 43236), (72, 43251), (74, 43263), (76, 43296), (79, 43437), (81, 43521), (95, 44223), (104, 44439), (106, 44481), (107, 44490), (112, 44658), (115, 44775), (116, 44778), (120, 44829), (122, 44916), (125, 44988), (127, 45057),

Gene: Jedediah_100 Start: 41903, Stop: 45736, Start Num: 3

Candidate Starts for Jedediah_100:

(Start: 3 @41903 has 149 MA's), (4, 41957), (6, 41987), (10, 42056), (19, 42410), (24, 42524), (25, 42566), (28, 42653), (29, 42671), (31, 42689), (41, 42908), (43, 42980), (46, 43058), (47, 43082), (50, 43151), (51, 43154), (52, 43256), (54, 43274), (55, 43307), (56, 43322), (59, 43400), (60, 43403), (66, 43532), (67, 43577), (68, 43712), (71, 43769), (72, 43784), (74, 43796), (76, 43829), (79, 43970), (81, 44054), (95, 44756), (104, 44972), (106, 45014), (107, 45023), (112, 45191), (115, 45308), (116, 45311), (120, 45362), (122, 45449), (125, 45521), (127, 45590),

Gene: Jemmno_97 Start: 41353, Stop: 45183, Start Num: 3

Candidate Starts for Jemmno_97:

(Start: 3 @41353 has 149 MA's), (4, 41407), (6, 41437), (10, 41506), (19, 41857), (24, 41971), (25, 42013), (28, 42100), (29, 42118), (31, 42136), (41, 42355), (43, 42427), (46, 42505), (47, 42529), (50, 42598), (51, 42601), (52, 42703), (54, 42721), (55, 42754), (56, 42769), (59, 42847), (60, 42850), (66, 42979), (67, 43024), (68, 43159), (71, 43216), (72, 43231), (74, 43243), (76, 43276), (79, 43417), (81, 43501), (95, 44203), (104, 44419), (106, 44461), (107, 44470), (112, 44638), (115, 44755), (116, 44758), (120, 44809), (122, 44896), (125, 44968), (127, 45037),

Gene: Jessibeth14_95 Start: 40990, Stop: 44820, Start Num: 3

Candidate Starts for Jessibeth14_95:

(Start: 3 @40990 has 149 MA's), (4, 41044), (6, 41074), (19, 41494), (24, 41608), (25, 41650), (28, 41737), (29, 41755), (31, 41773), (41, 41992), (43, 42064), (46, 42142), (47, 42166), (50, 42235), (51, 42238), (52, 42340), (54, 42358), (55, 42391), (56, 42406), (59, 42484), (60, 42487), (66, 42616), (67, 42661), (68, 42796), (71, 42853), (72, 42868), (74, 42880), (76, 42913), (79, 43054), (81, 43138), (95, 43840), (104, 44056), (106, 44098), (107, 44107), (112, 44275), (115, 44392), (116, 44395), (120, 44446), (122, 44533), (125, 44605), (127, 44674),

Gene: JigglyPuff_104 Start: 43562, Stop: 47398, Start Num: 3

Candidate Starts for JigglyPuff_104:

(Start: 3 @43562 has 149 MA's), (4, 43616), (6, 43646), (10, 43715), (19, 44066), (24, 44180), (25, 44222), (28, 44315), (29, 44333), (31, 44351), (41, 44570), (43, 44642), (46, 44720), (47, 44744), (50, 44813), (51, 44816), (52, 44918), (54, 44936), (55, 44969), (56, 44984), (59, 45062), (60, 45065), (66, 45194), (67, 45239), (68, 45374), (71, 45431), (72, 45446), (74, 45458), (76, 45491), (79, 45632), (81, 45716), (95, 46418), (104, 46634), (106, 46676), (107, 46685), (112, 46853), (115, 46970), (116, 46973), (120, 47024), (122, 47111), (125, 47183), (127, 47252),

Gene: JulietS_91 Start: 38910, Stop: 42746, Start Num: 3

Candidate Starts for JulietS_91:

(Start: 3 @38910 has 149 MA's), (4, 38964), (6, 38994), (10, 39063), (19, 39414), (24, 39528), (25, 39570), (28, 39663), (29, 39681), (31, 39699), (41, 39918), (43, 39990), (46, 40068), (47, 40092), (50, 40161), (51, 40164), (52, 40266), (54, 40284), (55, 40317), (56, 40332), (59, 40410), (60, 40413), (66, 40542), (67, 40587), (68, 40722), (71, 40779), (72, 40794), (74, 40806), (76, 40839), (79, 40980), (81, 41064), (95, 41766), (104, 41982), (106, 42024), (107, 42033), (112, 42201), (115, 42318), (116, 42321), (120, 42372), (122, 42459), (125, 42531), (127, 42600),

Gene: JustHall_93 Start: 40555, Stop: 44355, Start Num: 3

Candidate Starts for JustHall_93:

(Start: 3 @40555 has 149 MA's), (4, 40609), (6, 40639), (10, 40708), (19, 41059), (24, 41173), (25, 41215), (28, 41272), (29, 41290), (31, 41308), (41, 41527), (43, 41599), (46, 41677), (47, 41701), (50, 41770), (51, 41773), (52, 41875), (54, 41893), (55, 41926), (56, 41941), (59, 42019), (60, 42022), (66, 42151), (67, 42196), (68, 42331), (71, 42388), (72, 42403), (74, 42415), (76, 42448), (79, 42589), (81, 42673), (95, 43375), (104, 43591), (106, 43633), (107, 43642), (112, 43810), (115, 43927), (116, 43930), (120, 43981), (122, 44068), (125, 44140), (127, 44209),

Gene: Kamryn_96 Start: 41729, Stop: 45559, Start Num: 3

Candidate Starts for Kamryn_96:

(Start: 3 @41729 has 149 MA's), (4, 41783), (6, 41813), (19, 42233), (24, 42347), (25, 42389), (28, 42476), (29, 42494), (31, 42512), (41, 42731), (43, 42803), (46, 42881), (47, 42905), (50, 42974), (51, 42977), (52, 43079), (54, 43097), (55, 43130), (56, 43145), (59, 43223), (60, 43226), (66, 43355), (67, 43400), (68, 43535), (71, 43592), (72, 43607), (74, 43619), (76, 43652), (79, 43793), (81, 43877), (95, 44579), (104, 44795), (106, 44837), (107, 44846), (112, 45014), (115, 45131), (116, 45134), (120, 45185), (122, 45272), (125, 45344), (127, 45413),

Gene: Kboogie_100 Start: 40199, Stop: 43999, Start Num: 3

Candidate Starts for Kboogie_100:

(Start: 3 @40199 has 149 MA's), (4, 40253), (6, 40283), (10, 40352), (19, 40703), (24, 40817), (25, 40859), (28, 40916), (29, 40934), (31, 40952), (41, 41171), (43, 41243), (46, 41321), (47, 41345), (50, 41414), (51, 41417), (52, 41519), (54, 41537), (55, 41570), (56, 41585), (59, 41663), (60, 41666), (66, 41795), (67, 41840), (68, 41975), (71, 42032), (74, 42059), (76, 42092), (79, 42233), (81, 42317), (95, 43019), (104, 43235), (106, 43277), (107, 43286), (112, 43454), (115, 43571), (116, 43574), (120, 43625), (122, 43712), (125, 43784), (127, 43853),

Gene: Khaleesi_95 Start: 40952, Stop: 44782, Start Num: 3

Candidate Starts for Khaleesi_95:

(Start: 3 @40952 has 149 MA's), (4, 41006), (6, 41036), (19, 41456), (24, 41570), (25, 41612), (28, 41699), (29, 41717), (31, 41735), (41, 41954), (43, 42026), (46, 42104), (47, 42128), (50, 42197), (51, 42200), (52, 42302), (54, 42320), (55, 42353), (56, 42368), (59, 42446), (60, 42449), (66, 42578), (67, 42623), (68, 42758), (71, 42815), (72, 42830), (74, 42842), (76, 42875), (79, 43016), (81, 43100), (95, 43802), (104, 44018), (106, 44060), (107, 44069), (112, 44237), (115, 44354), (116, 44357), (120, 44408), (122, 44495), (125, 44567), (127, 44636),

Gene: Koguma_93 Start: 39130, Stop: 42966, Start Num: 3

Candidate Starts for Koguma_93:

(Start: 3 @39130 has 149 MA's), (4, 39184), (6, 39214), (10, 39283), (19, 39634), (24, 39748), (25, 39790), (28, 39883), (29, 39901), (31, 39919), (41, 40138), (43, 40210), (46, 40288), (47, 40312), (50, 40381), (51, 40384), (52, 40486), (54, 40504), (55, 40537), (56, 40552), (59, 40630), (60, 40633), (66, 40762), (67, 40807), (68, 40942), (71, 40999), (72, 41014), (74, 41026), (76, 41059), (79, 41200), (81, 41284), (95, 41986), (104, 42202), (106, 42244), (107, 42253), (112, 42421), (115, 42538), (116, 42541), (120, 42592), (122, 42679), (125, 42751), (127, 42820),

Gene: LRRHood_91 Start: 40949, Stop: 44785, Start Num: 3

Candidate Starts for LRRHood_91:

(Start: 3 @40949 has 149 MA's), (4, 41003), (6, 41033), (10, 41102), (19, 41453), (24, 41567), (25, 41609), (28, 41702), (29, 41720), (31, 41738), (41, 41957), (43, 42029), (46, 42107), (47, 42131), (50, 42200), (51, 42203), (52, 42305), (54, 42323), (55, 42356), (56, 42371), (59, 42449), (60, 42452), (66, 42581), (67, 42626), (68, 42761), (71, 42818), (72, 42833), (74, 42845), (76, 42878), (79, 43019), (81, 43103), (95, 43805), (104, 44021), (106, 44063), (107, 44072), (112, 44240), (115, 44357), (116,

44360), (120, 44411), (122, 44498), (125, 44570), (127, 44639),

Gene: Latch_97 Start: 40647, Stop: 44447, Start Num: 3

Candidate Starts for Latch_97:

(Start: 3 @40647 has 149 MA's), (4, 40701), (6, 40731), (10, 40800), (19, 41151), (24, 41265), (25, 41307), (28, 41364), (29, 41382), (31, 41400), (41, 41619), (43, 41691), (46, 41769), (47, 41793), (50, 41862), (51, 41865), (52, 41967), (54, 41985), (55, 42018), (56, 42033), (59, 42111), (60, 42114), (66, 42243), (67, 42288), (68, 42423), (71, 42480), (72, 42495), (74, 42507), (76, 42540), (79, 42681), (81, 42765), (95, 43467), (104, 43683), (106, 43725), (107, 43734), (112, 43902), (115, 44019), (116, 44022), (120, 44073), (122, 44160), (125, 44232), (127, 44301),

Gene: Lee7_94 Start: 41586, Stop: 45416, Start Num: 3

Candidate Starts for Lee7_94:

(Start: 3 @41586 has 149 MA's), (4, 41640), (6, 41670), (19, 42090), (24, 42204), (25, 42246), (28, 42333), (29, 42351), (31, 42369), (41, 42588), (43, 42660), (46, 42738), (47, 42762), (50, 42831), (51, 42834), (52, 42936), (54, 42954), (55, 42987), (56, 43002), (59, 43080), (60, 43083), (66, 43212), (67, 43257), (68, 43392), (71, 43449), (72, 43464), (74, 43476), (76, 43509), (79, 43650), (81, 43734), (95, 44436), (104, 44652), (106, 44694), (107, 44703), (112, 44871), (115, 44988), (116, 44991), (120, 45042), (122, 45129), (125, 45201), (127, 45270),

Gene: LifeSavor_96 Start: 41335, Stop: 45135, Start Num: 3

Candidate Starts for LifeSavor_96:

(Start: 3 @41335 has 149 MA's), (4, 41389), (6, 41419), (10, 41488), (19, 41839), (24, 41953), (25, 41995), (28, 42052), (29, 42070), (31, 42088), (41, 42307), (43, 42379), (46, 42457), (47, 42481), (50, 42550), (51, 42553), (52, 42655), (54, 42673), (55, 42706), (56, 42721), (59, 42799), (60, 42802), (66, 42931), (67, 42976), (68, 43111), (71, 43168), (72, 43183), (74, 43195), (76, 43228), (79, 43369), (81, 43453), (95, 44155), (104, 44371), (106, 44413), (107, 44422), (112, 44590), (115, 44707), (116, 44710), (120, 44761), (122, 44848), (125, 44920), (127, 44989),

Gene: LinStu_96 Start: 41573, Stop: 45373, Start Num: 3

Candidate Starts for LinStu_96:

(Start: 2 @41546 has 6 MA's), (Start: 3 @41573 has 149 MA's), (4, 41627), (6, 41657), (10, 41726), (19, 42077), (24, 42191), (25, 42233), (28, 42290), (29, 42308), (31, 42326), (41, 42545), (43, 42617), (46, 42695), (47, 42719), (50, 42788), (51, 42791), (52, 42893), (54, 42911), (55, 42944), (56, 42959), (59, 43037), (60, 43040), (66, 43169), (67, 43214), (68, 43349), (71, 43406), (72, 43421), (74, 43433), (76, 43466), (79, 43607), (81, 43691), (95, 44393), (104, 44609), (106, 44651), (107, 44660), (112, 44828), (115, 44945), (116, 44948), (120, 44999), (122, 45086), (125, 45158), (127, 45227),

Gene: Littleton_96 Start: 40524, Stop: 44354, Start Num: 3

Candidate Starts for Littleton_96:

(Start: 3 @40524 has 149 MA's), (4, 40578), (6, 40608), (19, 41028), (24, 41142), (25, 41184), (28, 41271), (29, 41289), (31, 41307), (41, 41526), (43, 41598), (46, 41676), (47, 41700), (50, 41769), (51, 41772), (52, 41874), (54, 41892), (55, 41925), (56, 41940), (59, 42018), (60, 42021), (66, 42150), (67, 42195), (68, 42330), (71, 42387), (72, 42402), (74, 42414), (76, 42447), (79, 42588), (81, 42672), (95, 43374), (104, 43590), (106, 43632), (107, 43641), (112, 43809), (115, 43926), (116, 43929), (120, 43980), (122, 44067), (125, 44139), (127, 44208),

Gene: Loanshark_96 Start: 41205, Stop: 45005, Start Num: 3

Candidate Starts for Loanshark_96:

(Start: 3 @41205 has 149 MA's), (4, 41259), (6, 41289), (19, 41709), (24, 41823), (25, 41865), (28, 41922), (29, 41940), (31, 41958), (41, 42177), (43, 42249), (46, 42327), (47, 42351), (50, 42420), (51, 42423), (52, 42525), (54, 42543), (55, 42576), (56, 42591), (59, 42669), (60, 42672), (66, 42801), (67, 42846), (68, 42981), (71, 43038), (72, 43053), (74, 43065), (76, 43098), (79, 43239), (81, 43323), (95,

44025), (104, 44241), (106, 44283), (107, 44292), (112, 44460), (115, 44577), (116, 44580), (120, 44631), (122, 44718), (125, 44790), (127, 44859),

Gene: LolaVinca_98 Start: 42311, Stop: 46141, Start Num: 3

Candidate Starts for LolaVinca_98:

(Start: 3 @42311 has 149 MA's), (4, 42365), (6, 42395), (19, 42815), (24, 42929), (25, 42971), (28, 43058), (29, 43076), (31, 43094), (41, 43313), (43, 43385), (46, 43463), (47, 43487), (50, 43556), (51, 43559), (52, 43661), (54, 43679), (55, 43712), (56, 43727), (59, 43805), (60, 43808), (66, 43937), (67, 43982), (68, 44117), (71, 44174), (72, 44189), (74, 44201), (76, 44234), (79, 44375), (81, 44459), (95, 45161), (104, 45377), (106, 45419), (107, 45428), (112, 45596), (115, 45713), (116, 45716), (120, 45767), (122, 45854), (125, 45926), (127, 45995),

Gene: LordLeafolot_101 Start: 43302, Stop: 47105, Start Num: 3

Candidate Starts for LordLeafolot_101:

(Start: 3 @43302 has 149 MA's), (4, 43356), (6, 43386), (19, 43809), (24, 43923), (25, 43965), (28, 44022), (29, 44040), (31, 44058), (41, 44277), (43, 44349), (46, 44427), (47, 44451), (50, 44520), (51, 44523), (52, 44625), (54, 44643), (55, 44676), (56, 44691), (59, 44769), (60, 44772), (66, 44901), (67, 44946), (68, 45081), (71, 45138), (72, 45153), (74, 45165), (76, 45198), (79, 45339), (81, 45423), (95, 46125), (104, 46341), (106, 46383), (107, 46392), (112, 46560), (115, 46677), (116, 46680), (120, 46731), (122, 46818), (125, 46890), (127, 46959),

Gene: Lukilu_87 Start: 40816, Stop: 44646, Start Num: 3

Candidate Starts for Lukilu_87:

(Start: 3 @40816 has 149 MA's), (4, 40870), (6, 40900), (19, 41320), (24, 41434), (25, 41476), (28, 41563), (29, 41581), (31, 41599), (41, 41818), (43, 41890), (46, 41968), (47, 41992), (50, 42061), (51, 42064), (52, 42166), (54, 42184), (55, 42217), (56, 42232), (59, 42310), (60, 42313), (66, 42442), (67, 42487), (68, 42622), (71, 42679), (72, 42694), (74, 42706), (76, 42739), (79, 42880), (81, 42964), (95, 43666), (104, 43882), (106, 43924), (107, 43933), (112, 44101), (115, 44218), (116, 44221), (120, 44272), (122, 44359), (125, 44431), (127, 44500),

Gene: Maby2021_96 Start: 41050, Stop: 44880, Start Num: 3

Candidate Starts for Maby2021_96:

(Start: 2 @41023 has 6 MA's), (Start: 3 @41050 has 149 MA's), (4, 41104), (6, 41134), (10, 41203), (19, 41554), (24, 41668), (25, 41710), (28, 41797), (29, 41815), (31, 41833), (41, 42052), (43, 42124), (46, 42202), (47, 42226), (50, 42295), (51, 42298), (52, 42400), (54, 42418), (55, 42451), (56, 42466), (59, 42544), (60, 42547), (66, 42676), (67, 42721), (68, 42856), (71, 42913), (72, 42928), (74, 42940), (76, 42973), (79, 43114), (81, 43198), (95, 43900), (104, 44116), (106, 44158), (107, 44167), (112, 44335), (115, 44452), (116, 44455), (120, 44506), (122, 44593), (125, 44665), (127, 44734),

Gene: Mangeria_96 Start: 41167, Stop: 44985, Start Num: 3

Candidate Starts for Mangeria_96:

(Start: 3 @41167 has 149 MA's), (4, 41221), (6, 41251), (19, 41671), (24, 41785), (25, 41827), (28, 41902), (29, 41920), (31, 41938), (41, 42157), (43, 42229), (46, 42307), (47, 42331), (50, 42400), (51, 42403), (52, 42505), (54, 42523), (55, 42556), (56, 42571), (59, 42649), (60, 42652), (66, 42781), (67, 42826), (68, 42961), (71, 43018), (72, 43033), (74, 43045), (76, 43078), (79, 43219), (81, 43303), (95, 44005), (104, 44221), (106, 44263), (107, 44272), (112, 44440), (115, 44557), (116, 44560), (120, 44611), (122, 44698), (125, 44770), (127, 44839),

Gene: Matsumoto_94 Start: 40930, Stop: 44763, Start Num: 3

Candidate Starts for Matsumoto_94:

(Start: 3 @40930 has 149 MA's), (4, 40984), (6, 41014), (19, 41437), (24, 41551), (25, 41593), (28, 41680), (29, 41698), (31, 41716), (41, 41935), (43, 42007), (46, 42085), (47, 42109), (50, 42178), (51, 42181), (52, 42283), (54, 42301), (55, 42334), (56, 42349), (59, 42427), (60, 42430), (66, 42559), (67,

42604), (68, 42739), (71, 42796), (72, 42811), (74, 42823), (76, 42856), (79, 42997), (81, 43081), (95, 43783), (104, 43999), (106, 44041), (107, 44050), (112, 44218), (115, 44335), (116, 44338), (120, 44389), (122, 44476), (125, 44548), (127, 44617),

Gene: McGee_98 Start: 39831, Stop: 43631, Start Num: 3

Candidate Starts for McGee_98:

(Start: 3 @39831 has 149 MA's), (4, 39885), (6, 39915), (10, 39984), (19, 40335), (24, 40449), (25, 40491), (28, 40548), (29, 40566), (31, 40584), (41, 40803), (43, 40875), (46, 40953), (47, 40977), (50, 41046), (51, 41049), (52, 41151), (54, 41169), (55, 41202), (56, 41217), (59, 41295), (60, 41298), (66, 41427), (67, 41472), (68, 41607), (71, 41664), (72, 41679), (74, 41691), (76, 41724), (79, 41865), (81, 41949), (95, 42651), (104, 42867), (106, 42909), (107, 42918), (112, 43086), (115, 43203), (116, 43206), (120, 43257), (122, 43344), (125, 43416), (127, 43485),

Gene: McWolfish_94 Start: 40775, Stop: 44605, Start Num: 3

Candidate Starts for McWolfish_94:

(Start: 2 @40748 has 6 MA's), (Start: 3 @40775 has 149 MA's), (4, 40829), (6, 40859), (10, 40928), (11, 40952), (19, 41279), (24, 41393), (25, 41435), (28, 41522), (29, 41540), (31, 41558), (41, 41777), (43, 41849), (46, 41927), (47, 41951), (50, 42020), (51, 42023), (52, 42125), (54, 42143), (55, 42176), (56, 42191), (59, 42269), (60, 42272), (66, 42401), (67, 42446), (68, 42581), (71, 42638), (72, 42653), (74, 42665), (76, 42698), (79, 42839), (81, 42923), (95, 43625), (104, 43841), (106, 43883), (107, 43892), (112, 44060), (115, 44177), (116, 44180), (120, 44231), (122, 44318), (125, 44390), (127, 44459),

Gene: Megamind_95 Start: 40871, Stop: 44701, Start Num: 3

Candidate Starts for Megamind_95:

(Start: 3 @40871 has 149 MA's), (4, 40925), (6, 40955), (19, 41375), (24, 41489), (25, 41531), (28, 41618), (29, 41636), (31, 41654), (41, 41873), (43, 41945), (46, 42023), (47, 42047), (50, 42116), (51, 42119), (52, 42221), (54, 42239), (55, 42272), (56, 42287), (59, 42365), (60, 42368), (66, 42497), (67, 42542), (68, 42677), (71, 42734), (72, 42749), (74, 42761), (76, 42794), (79, 42935), (81, 43019), (95, 43721), (104, 43937), (106, 43979), (107, 43988), (112, 44156), (115, 44273), (116, 44276), (120, 44327), (122, 44414), (125, 44486), (127, 44555),

Gene: Melpomini_90 Start: 38395, Stop: 42408, Start Num: 1

Candidate Starts for Melpomini_90:

(Start: 1 @38395 has 18 MA's), (19, 39097), (24, 39211), (25, 39253), (28, 39328), (29, 39346), (30, 39352), (31, 39364), (35, 39403), (41, 39580), (43, 39652), (46, 39730), (47, 39754), (50, 39823), (51, 39826), (52, 39928), (54, 39946), (55, 39979), (56, 39994), (59, 40072), (60, 40075), (66, 40204), (67, 40249), (68, 40384), (71, 40441), (72, 40456), (74, 40468), (76, 40501), (79, 40642), (81, 40726), (95, 41428), (104, 41644), (106, 41686), (107, 41695), (112, 41863), (115, 41980), (116, 41983), (120, 42034), (122, 42121), (125, 42193), (127, 42262),

Gene: MikeLiesIn_97 Start: 41218, Stop: 45048, Start Num: 3

Candidate Starts for MikeLiesIn_97:

(Start: 3 @41218 has 149 MA's), (4, 41272), (6, 41302), (19, 41722), (24, 41836), (25, 41878), (28, 41965), (29, 41983), (31, 42001), (41, 42220), (43, 42292), (46, 42370), (47, 42394), (50, 42463), (51, 42466), (52, 42568), (54, 42586), (55, 42619), (56, 42634), (59, 42712), (60, 42715), (66, 42844), (67, 42889), (68, 43024), (71, 43081), (72, 43096), (74, 43108), (76, 43141), (79, 43282), (81, 43366), (95, 44068), (104, 44284), (106, 44326), (107, 44335), (112, 44503), (115, 44620), (116, 44623), (120, 44674), (122, 44761), (125, 44833), (127, 44902),

Gene: Mikro_94 Start: 42293, Stop: 46123, Start Num: 3

Candidate Starts for Mikro_94:

(Start: 2 @42266 has 6 MA's), (Start: 3 @42293 has 149 MA's), (4, 42347), (6, 42377), (10, 42446), (19, 42797), (24, 42911), (25, 42953), (28, 43040), (29, 43058), (31, 43076), (41, 43295), (43, 43367), (46, 43445), (47, 43469), (50, 43538), (51, 43541), (52, 43643), (54, 43661), (55, 43694), (56, 43709), (59, 43787), (60, 43790), (66, 43919), (67, 43964), (68, 44099), (71, 44156), (72, 44171), (74, 44183), (76, 44216), (79, 44357), (81, 44441), (95, 45143), (104, 45359), (106, 45401), (107, 45410), (112, 45578), (115, 45695), (116, 45698), (120, 45749), (122, 45836), (125, 45908), (127, 45977),

Gene: MoMoMixon_97 Start: 40943, Stop: 44773, Start Num: 3

Candidate Starts for MoMoMixon_97:

(Start: 3 @40943 has 149 MA's), (4, 40997), (6, 41027), (19, 41447), (24, 41561), (25, 41603), (28, 41690), (29, 41708), (31, 41726), (41, 41945), (43, 42017), (46, 42095), (47, 42119), (50, 42188), (51, 42191), (52, 42293), (54, 42311), (55, 42344), (56, 42359), (59, 42437), (60, 42440), (66, 42569), (67, 42614), (68, 42749), (71, 42806), (72, 42821), (74, 42833), (76, 42866), (79, 43007), (81, 43091), (95, 43793), (104, 44009), (106, 44051), (107, 44060), (112, 44228), (115, 44345), (116, 44348), (120, 44399), (122, 44486), (125, 44558), (127, 44627),

Gene: Momo_96 Start: 40647, Stop: 44447, Start Num: 3

Candidate Starts for Momo_96:

(Start: 3 @40647 has 149 MA's), (4, 40701), (6, 40731), (10, 40800), (19, 41151), (24, 41265), (25, 41307), (28, 41364), (29, 41382), (31, 41400), (41, 41619), (43, 41691), (46, 41769), (47, 41793), (50, 41862), (51, 41865), (52, 41967), (54, 41985), (55, 42018), (56, 42033), (59, 42111), (60, 42114), (66, 42243), (67, 42288), (68, 42423), (71, 42480), (72, 42495), (74, 42507), (76, 42540), (79, 42681), (81, 42765), (95, 43467), (104, 43683), (106, 43725), (107, 43734), (112, 43902), (115, 44019), (116, 44022), (120, 44073), (122, 44160), (125, 44232), (127, 44301),

Gene: Morizzled23_96 Start: 39915, Stop: 43928, Start Num: 1

Candidate Starts for Morizzled23_96:

(Start: 1 @39915 has 18 MA's), (19, 40617), (24, 40731), (25, 40773), (28, 40848), (29, 40866), (30, 40872), (31, 40884), (35, 40923), (41, 41100), (43, 41172), (46, 41250), (47, 41274), (50, 41343), (51, 41346), (52, 41448), (54, 41466), (55, 41499), (56, 41514), (59, 41592), (60, 41595), (66, 41724), (67, 41769), (68, 41904), (71, 41961), (74, 41988), (76, 42021), (79, 42162), (81, 42246), (95, 42948), (104, 43164), (106, 43206), (107, 43215), (112, 43383), (115, 43500), (116, 43503), (120, 43554), (122, 43641), (125, 43713), (127, 43782),

Gene: Myrna_96 Start: 43197, Stop: 46664, Start Num: 3

Candidate Starts for Myrna_96:

(Start: 3 @43197 has 149 MA's), (5, 43278), (8, 43305), (9, 43320), (10, 43335), (14, 43620), (17, 43698), (20, 43758), (21, 43803), (23, 43872), (24, 43917), (25, 43956), (26, 44025), (32, 44112), (33, 44133), (36, 44274), (38, 44286), (39, 44352), (40, 44355), (42, 44397), (44, 44451), (45, 44469), (51, 44607), (53, 44715), (55, 44757), (58, 44820), (61, 44859), (62, 44862), (64, 44943), (65, 44946), (68, 45111), (70, 45144), (71, 45168), (73, 45186), (83, 45408), (89, 45555), (95, 45837), (97, 45861), (98, 45876), (99, 45897), (101, 45930), (102, 45969), (103, 45972), (109, 46122), (110, 46155), (111, 46164), (113, 46230), (114, 46269), (118, 46290), (123, 46413), (124, 46446), (127, 46518), (130, 46569),

Gene: Naija_96 Start: 40647, Stop: 44447, Start Num: 3

Candidate Starts for Naija_96:

(Start: 3 @40647 has 149 MA's), (4, 40701), (6, 40731), (10, 40800), (19, 41151), (24, 41265), (25, 41307), (28, 41364), (29, 41382), (31, 41400), (41, 41619), (43, 41691), (46, 41769), (47, 41793), (50, 41862), (51, 41865), (52, 41967), (54, 41985), (55, 42018), (56, 42033), (59, 42111), (60, 42114), (66, 42243), (67, 42288), (68, 42423), (71, 42480), (72, 42495), (74, 42507), (76, 42540), (79, 42681), (81, 42765), (95, 43467), (104, 43683), (106, 43725), (107, 43734), (112, 43902), (115, 44019), (116, 44022), (120, 44073), (122, 44160), (125, 44232), (127, 44301),

Gene: Napoleon13_92 Start: 39013, Stop: 42843, Start Num: 3

Candidate Starts for Napoleon13_92:

(Start: 3 @39013 has 149 MA's), (4, 39067), (6, 39097), (19, 39517), (24, 39631), (25, 39673), (28, 39760), (29, 39778), (31, 39796), (41, 40015), (43, 40087), (46, 40165), (47, 40189), (50, 40258), (51, 40261), (52, 40363), (54, 40381), (55, 40414), (56, 40429), (59, 40507), (60, 40510), (66, 40639), (67, 40684), (68, 40819), (71, 40876), (72, 40891), (74, 40903), (76, 40936), (79, 41077), (81, 41161), (95, 41863), (104, 42079), (106, 42121), (107, 42130), (112, 42298), (115, 42415), (116, 42418), (120, 42469), (122, 42556), (125, 42628), (127, 42697),

Gene: Nappy_99 Start: 42373, Stop: 46209, Start Num: 3

Candidate Starts for Nappy_99:

(Start: 3 @42373 has 149 MA's), (4, 42427), (6, 42457), (10, 42526), (19, 42877), (24, 42991), (25, 43033), (28, 43126), (29, 43144), (31, 43162), (41, 43381), (43, 43453), (46, 43531), (47, 43555), (50, 43624), (51, 43627), (52, 43729), (54, 43747), (55, 43780), (56, 43795), (59, 43873), (60, 43876), (66, 44005), (67, 44050), (68, 44185), (71, 44242), (72, 44257), (74, 44269), (76, 44302), (79, 44443), (81, 44527), (95, 45229), (104, 45445), (106, 45487), (107, 45496), (112, 45664), (115, 45781), (116, 45784), (120, 45835), (122, 45922), (125, 45994), (127, 46063),

Gene: Naval22_101 Start: 42809, Stop: 46639, Start Num: 3

Candidate Starts for Naval22_101:

(Start: 3 @42809 has 149 MA's), (4, 42863), (6, 42893), (19, 43313), (24, 43427), (25, 43469), (28, 43556), (29, 43574), (31, 43592), (41, 43811), (43, 43883), (46, 43961), (47, 43985), (50, 44054), (51, 44057), (52, 44159), (54, 44177), (55, 44210), (56, 44225), (59, 44303), (60, 44306), (66, 44435), (67, 44480), (68, 44615), (71, 44672), (72, 44687), (74, 44699), (76, 44732), (79, 44873), (81, 44957), (95, 45659), (104, 45875), (106, 45917), (107, 45926), (112, 46094), (115, 46211), (116, 46214), (120, 46265), (122, 46352), (125, 46424), (127, 46493),

Gene: NedWong_97 Start: 41205, Stop: 45035, Start Num: 3

Candidate Starts for NedWong_97:

(Start: 3 @41205 has 149 MA's), (4, 41259), (6, 41289), (19, 41709), (24, 41823), (25, 41865), (28, 41952), (29, 41970), (31, 41988), (41, 42207), (43, 42279), (46, 42357), (47, 42381), (50, 42450), (51, 42453), (52, 42555), (54, 42573), (55, 42606), (56, 42621), (59, 42699), (60, 42702), (66, 42831), (67, 42876), (68, 43011), (71, 43068), (72, 43083), (74, 43095), (76, 43128), (79, 43269), (81, 43353), (95, 44055), (104, 44271), (106, 44313), (107, 44322), (112, 44490), (115, 44607), (116, 44610), (120, 44661), (122, 44748), (125, 44820), (127, 44889),

Gene: Ngannou_93 Start: 39629, Stop: 43429, Start Num: 3

Candidate Starts for Ngannou_93:

(Start: 3 @39629 has 149 MA's), (4, 39683), (6, 39713), (10, 39782), (19, 40133), (24, 40247), (25, 40289), (28, 40346), (29, 40364), (31, 40382), (41, 40601), (43, 40673), (46, 40751), (47, 40775), (50, 40844), (51, 40847), (52, 40949), (54, 40967), (55, 41000), (56, 41015), (59, 41093), (60, 41096), (66, 41225), (67, 41270), (68, 41405), (71, 41462), (72, 41477), (74, 41489), (76, 41522), (79, 41663), (81, 41747), (95, 42449), (104, 42665), (106, 42707), (107, 42716), (112, 42884), (115, 43001), (116, 43004), (120, 43055), (122, 43142), (125, 43214), (127, 43283),

Gene: Nidhogg_97 Start: 41196, Stop: 45023, Start Num: 2

Candidate Starts for Nidhogg_97:

(Start: 2 @41196 has 6 MA's), (Start: 3 @41223 has 149 MA's), (4, 41277), (6, 41307), (10, 41376), (19, 41727), (24, 41841), (25, 41883), (28, 41940), (29, 41958), (31, 41976), (41, 42195), (43, 42267), (46, 42345), (47, 42369), (50, 42438), (51, 42441), (52, 42543), (54, 42561), (55, 42594), (56, 42609), (59, 42687), (60, 42690), (66, 42819), (67, 42864), (68, 42999), (71, 43056), (72, 43071), (74, 43083), (76, 43116), (79, 43257), (81, 43341), (95, 44043), (104, 44259), (106, 44301), (107, 44310), (112,

44478), (115, 44595), (116, 44598), (120, 44649), (122, 44736), (125, 44808), (127, 44877),

Gene: NoodleTree_104 Start: 42400, Stop: 46245, Start Num: 3

Candidate Starts for NoodleTree_104:

(Start: 2 @42373 has 6 MA's), (Start: 3 @42400 has 149 MA's), (4, 42454), (6, 42484), (10, 42553), (19, 42904), (24, 43018), (25, 43060), (28, 43162), (29, 43180), (31, 43198), (41, 43417), (43, 43489), (46, 43567), (47, 43591), (50, 43660), (51, 43663), (52, 43765), (54, 43783), (55, 43816), (56, 43831), (59, 43909), (60, 43912), (66, 44041), (67, 44086), (68, 44221), (71, 44278), (72, 44293), (74, 44305), (76, 44338), (79, 44479), (81, 44563), (95, 45265), (104, 45481), (106, 45523), (107, 45532), (112, 45700), (115, 45817), (116, 45820), (120, 45871), (122, 45958), (125, 46030), (127, 46099),

Gene: Norm_97 Start: 41978, Stop: 45808, Start Num: 3

Candidate Starts for Norm_97:

(Start: 3 @41978 has 149 MA's), (4, 42032), (6, 42062), (19, 42482), (24, 42596), (25, 42638), (28, 42725), (29, 42743), (31, 42761), (41, 42980), (43, 43052), (46, 43130), (47, 43154), (50, 43223), (51, 43226), (52, 43328), (54, 43346), (55, 43379), (56, 43394), (59, 43472), (60, 43475), (66, 43604), (67, 43649), (68, 43784), (71, 43841), (72, 43856), (74, 43868), (76, 43901), (79, 44042), (81, 44126), (95, 44828), (104, 45044), (106, 45086), (107, 45095), (112, 45263), (115, 45380), (116, 45383), (120, 45434), (122, 45521), (125, 45593), (127, 45662),

Gene: NuevoMundo_102 Start: 43330, Stop: 47160, Start Num: 3

Candidate Starts for NuevoMundo_102:

(Start: 2 @43303 has 6 MA's), (Start: 3 @43330 has 149 MA's), (4, 43384), (6, 43414), (10, 43483), (19, 43834), (24, 43948), (25, 43990), (28, 44077), (29, 44095), (31, 44113), (41, 44332), (43, 44404), (46, 44482), (47, 44506), (50, 44575), (51, 44578), (52, 44680), (54, 44698), (55, 44731), (56, 44746), (59, 44824), (60, 44827), (66, 44956), (67, 45001), (68, 45136), (71, 45193), (72, 45208), (74, 45220), (76, 45253), (79, 45394), (81, 45478), (95, 46180), (104, 46396), (106, 46438), (107, 46447), (112, 46615), (115, 46732), (116, 46735), (120, 46786), (122, 46873), (125, 46945), (127, 47014),

Gene: ParkTD_97 Start: 41201, Stop: 45031, Start Num: 3

Candidate Starts for ParkTD_97:

(Start: 3 @41201 has 149 MA's), (4, 41255), (6, 41285), (19, 41705), (24, 41819), (25, 41861), (28, 41948), (29, 41966), (31, 41984), (41, 42203), (43, 42275), (46, 42353), (47, 42377), (50, 42446), (51, 42449), (52, 42551), (54, 42569), (55, 42602), (56, 42617), (59, 42695), (60, 42698), (66, 42827), (67, 42872), (68, 43007), (71, 43064), (72, 43079), (74, 43091), (76, 43124), (79, 43265), (81, 43349), (95, 44051), (104, 44267), (106, 44309), (107, 44318), (112, 44486), (115, 44603), (116, 44606), (120, 44657), (122, 44744), (125, 44816), (127, 44885),

Gene: Patter_97 Start: 40664, Stop: 44464, Start Num: 3

Candidate Starts for Patter_97:

(Start: 3 @40664 has 149 MA's), (4, 40718), (6, 40748), (10, 40817), (19, 41168), (24, 41282), (25, 41324), (28, 41381), (29, 41399), (31, 41417), (41, 41636), (43, 41708), (46, 41786), (47, 41810), (50, 41879), (51, 41882), (52, 41984), (54, 42002), (55, 42035), (56, 42050), (59, 42128), (60, 42131), (66, 42260), (67, 42305), (68, 42440), (71, 42497), (72, 42512), (74, 42524), (76, 42557), (79, 42698), (81, 42782), (95, 43484), (104, 43700), (106, 43742), (107, 43751), (112, 43919), (115, 44036), (116, 44039), (120, 44090), (122, 44177), (125, 44249), (127, 44318),

Gene: Phabba_101 Start: 42154, Stop: 45843, Start Num: 3

Candidate Starts for Phabba_101:

(Start: 3 @42154 has 149 MA's), (8, 42262), (9, 42277), (12, 42346), (14, 42577), (17, 42658), (21, 42724), (23, 42787), (24, 42832), (26, 42940), (28, 42997), (29, 43015), (32, 43036), (36, 43213), (37, 43222), (38, 43225), (42, 43336), (44, 43390), (45, 43408), (49, 43516), (51, 43546), (55, 43696), (62, 43801), (63, 43846), (64, 43891), (68, 44056), (70, 44089), (73, 44131), (74, 44140), (77, 44236), (80,

44314), (86, 44497), (90, 44671), (91, 44767), (93, 44812), (95, 44959), (97, 44986), (98, 45001), (99, 45022), (102, 45094), (103, 45097), (108, 45220), (109, 45247), (114, 45448), (118, 45469), (123, 45592), (124, 45625), (127, 45697),

Gene: Phlegm_99 Start: 40647, Stop: 44447, Start Num: 3

Candidate Starts for Phlegm_99:

(Start: 3 @40647 has 149 MA's), (4, 40701), (6, 40731), (10, 40800), (19, 41151), (24, 41265), (25, 41307), (28, 41364), (29, 41382), (31, 41400), (41, 41619), (43, 41691), (46, 41769), (47, 41793), (50, 41862), (51, 41865), (52, 41967), (54, 41985), (55, 42018), (56, 42033), (59, 42111), (60, 42114), (66, 42243), (67, 42288), (68, 42423), (71, 42480), (72, 42495), (74, 42507), (76, 42540), (79, 42681), (81, 42765), (95, 43467), (104, 43683), (106, 43725), (107, 43734), (112, 43902), (115, 44019), (116, 44022), (120, 44073), (122, 44160), (125, 44232), (127, 44301),

Gene: Phox_93 Start: 41073, Stop: 44888, Start Num: 3

Candidate Starts for Phox_93:

(Start: 3 @41073 has 149 MA's), (4, 41127), (6, 41157), (19, 41577), (24, 41691), (25, 41733), (28, 41808), (29, 41826), (30, 41832), (31, 41844), (35, 41883), (41, 42060), (43, 42132), (46, 42210), (47, 42234), (50, 42303), (51, 42306), (52, 42408), (54, 42426), (55, 42459), (56, 42474), (59, 42552), (60, 42555), (66, 42684), (67, 42729), (68, 42864), (71, 42921), (74, 42948), (76, 42981), (79, 43122), (81, 43206), (95, 43908), (104, 44124), (106, 44166), (107, 44175), (112, 44343), (115, 44460), (116, 44463), (120, 44514), (122, 44601), (125, 44673), (127, 44742),

Gene: Phusco_97 Start: 41412, Stop: 45212, Start Num: 3

Candidate Starts for Phusco_97:

(Start: 3 @41412 has 149 MA's), (4, 41466), (6, 41496), (10, 41565), (19, 41916), (24, 42030), (25, 42072), (28, 42129), (29, 42147), (31, 42165), (41, 42384), (43, 42456), (46, 42534), (47, 42558), (50, 42627), (51, 42630), (52, 42732), (54, 42750), (55, 42783), (56, 42798), (59, 42876), (60, 42879), (66, 43008), (67, 43053), (68, 43188), (71, 43245), (72, 43260), (74, 43272), (76, 43305), (79, 43446), (81, 43530), (95, 44232), (104, 44448), (106, 44490), (107, 44499), (112, 44667), (115, 44784), (116, 44787), (120, 44838), (122, 44925), (125, 44997), (127, 45066),

Gene: Pier_100 Start: 42206, Stop: 46045, Start Num: 3

Candidate Starts for Pier_100:

(Start: 3 @42206 has 149 MA's), (4, 42260), (6, 42290), (19, 42710), (24, 42824), (25, 42866), (28, 42968), (29, 42986), (31, 43004), (41, 43223), (43, 43295), (46, 43373), (47, 43397), (50, 43466), (51, 43469), (52, 43571), (54, 43589), (55, 43622), (56, 43637), (59, 43715), (60, 43718), (66, 43847), (67, 43892), (68, 44027), (71, 44084), (72, 44099), (74, 44111), (76, 44144), (79, 44285), (81, 44369), (92, 44906), (95, 45062), (104, 45278), (106, 45320), (107, 45329), (112, 45497), (115, 45614), (116, 45617), (120, 45668), (122, 45755), (125, 45827), (126, 45887), (127, 45899),

Gene: Pinkcreek_87 Start: 38159, Stop: 41974, Start Num: 3

Candidate Starts for Pinkcreek_87:

(Start: 3 @38159 has 149 MA's), (4, 38213), (6, 38243), (19, 38663), (24, 38777), (25, 38819), (28, 38894), (29, 38912), (30, 38918), (31, 38930), (35, 38969), (41, 39146), (43, 39218), (46, 39296), (47, 39320), (50, 39389), (51, 39392), (52, 39494), (54, 39512), (55, 39545), (56, 39560), (59, 39638), (60, 39641), (66, 39770), (67, 39815), (68, 39950), (71, 40007), (74, 40034), (76, 40067), (79, 40208), (81, 40292), (84, 40373), (95, 40994), (104, 41210), (106, 41252), (107, 41261), (112, 41429), (115, 41546), (116, 41549), (120, 41600), (122, 41687), (125, 41759), (127, 41828),

Gene: Pio_100 Start: 42938, Stop: 46771, Start Num: 3

Candidate Starts for Pio_100:

(Start: 3 @42938 has 149 MA's), (4, 42992), (6, 43022), (19, 43445), (24, 43559), (25, 43601), (28, 43688), (29, 43706), (31, 43724), (41, 43943), (43, 44015), (46, 44093), (47, 44117), (50, 44186), (51,

44189), (52, 44291), (54, 44309), (55, 44342), (56, 44357), (59, 44435), (60, 44438), (66, 44567), (67, 44612), (68, 44747), (71, 44804), (72, 44819), (74, 44831), (76, 44864), (79, 45005), (81, 45089), (95, 45791), (104, 46007), (106, 46049), (107, 46058), (112, 46226), (115, 46343), (116, 46346), (120, 46397), (122, 46484), (125, 46556), (127, 46625),

Gene: Pivoine_96 Start: 40647, Stop: 44447, Start Num: 3

Candidate Starts for Pivoine_96:

(Start: 3 @40647 has 149 MA's), (4, 40701), (6, 40731), (10, 40800), (19, 41151), (24, 41265), (25, 41307), (28, 41364), (29, 41382), (31, 41400), (41, 41619), (43, 41691), (46, 41769), (47, 41793), (50, 41862), (51, 41865), (52, 41967), (54, 41985), (55, 42018), (56, 42033), (59, 42111), (60, 42114), (66, 42243), (67, 42288), (68, 42423), (71, 42480), (72, 42495), (74, 42507), (76, 42540), (79, 42681), (81, 42765), (95, 43467), (104, 43683), (106, 43725), (107, 43734), (112, 43902), (115, 44019), (116, 44022), (120, 44073), (122, 44160), (125, 44232), (127, 44301),

Gene: Pleione_99 Start: 41204, Stop: 45049, Start Num: 3

Candidate Starts for Pleione_99:

(Start: 3 @41204 has 149 MA's), (4, 41258), (6, 41288), (19, 41708), (24, 41822), (25, 41864), (28, 41966), (29, 41984), (31, 42002), (41, 42221), (43, 42293), (46, 42371), (47, 42395), (50, 42464), (51, 42467), (52, 42569), (54, 42587), (55, 42620), (56, 42635), (59, 42713), (60, 42716), (66, 42845), (67, 42890), (68, 43025), (71, 43082), (72, 43097), (74, 43109), (76, 43142), (79, 43283), (81, 43367), (95, 44069), (104, 44285), (106, 44327), (107, 44336), (112, 44504), (115, 44621), (116, 44624), (120, 44675), (122, 44762), (125, 44834), (127, 44903),

Gene: PurduePete_96 Start: 41413, Stop: 45243, Start Num: 3

Candidate Starts for PurduePete_96:

(Start: 2 @41386 has 6 MA's), (Start: 3 @41413 has 149 MA's), (4, 41467), (6, 41497), (10, 41566), (11, 41590), (19, 41917), (24, 42031), (25, 42073), (28, 42160), (29, 42178), (31, 42196), (41, 42415), (43, 42487), (46, 42565), (47, 42589), (50, 42658), (51, 42661), (52, 42763), (54, 42781), (55, 42814), (56, 42829), (59, 42907), (60, 42910), (66, 43039), (67, 43084), (68, 43219), (71, 43276), (72, 43291), (74, 43303), (76, 43336), (79, 43477), (81, 43561), (95, 44263), (104, 44479), (106, 44521), (107, 44530), (112, 44698), (115, 44815), (116, 44818), (120, 44869), (122, 44956), (125, 45028), (127, 45097),

Gene: QBert_90 Start: 40705, Stop: 44565, Start Num: 3

Candidate Starts for QBert_90:

(Start: 3 @40705 has 149 MA's), (4, 40759), (6, 40789), (19, 41209), (24, 41323), (25, 41365), (28, 41482), (29, 41500), (31, 41518), (41, 41737), (43, 41809), (46, 41887), (47, 41911), (50, 41980), (51, 41983), (52, 42085), (54, 42103), (55, 42136), (56, 42151), (59, 42229), (60, 42232), (66, 42361), (67, 42406), (68, 42541), (71, 42598), (72, 42613), (74, 42625), (76, 42658), (79, 42799), (81, 42883), (95, 43585), (104, 43801), (106, 43843), (107, 43852), (112, 44020), (115, 44137), (116, 44140), (120, 44191), (122, 44278), (125, 44350), (127, 44419),

Gene: Quasimodo_97 Start: 41177, Stop: 44992, Start Num: 3

Candidate Starts for Quasimodo_97:

(Start: 3 @41177 has 149 MA's), (4, 41231), (6, 41261), (10, 41330), (19, 41681), (24, 41795), (25, 41837), (28, 41912), (29, 41930), (30, 41936), (31, 41948), (35, 41987), (41, 42164), (43, 42236), (46, 42314), (47, 42338), (50, 42407), (51, 42410), (52, 42512), (54, 42530), (55, 42563), (56, 42578), (59, 42656), (60, 42659), (66, 42788), (67, 42833), (68, 42968), (71, 43025), (74, 43052), (76, 43085), (79, 43226), (81, 43310), (95, 44012), (104, 44228), (106, 44270), (107, 44279), (112, 44447), (115, 44564), (116, 44567), (120, 44618), (122, 44705), (125, 44777), (127, 44846),

Gene: Rabinovish_93 Start: 41046, Stop: 45059, Start Num: 1

Candidate Starts for Rabinovish_93:

(Start: 1 @41046 has 18 MA's), (19, 41748), (24, 41862), (25, 41904), (28, 41979), (29, 41997), (30, 42003), (31, 42015), (35, 42054), (41, 42231), (43, 42303), (46, 42381), (47, 42405), (50, 42474), (51, 42477), (52, 42579), (54, 42597), (55, 42630), (56, 42645), (59, 42723), (60, 42726), (66, 42855), (67, 42900), (68, 43035), (71, 43092), (72, 43107), (74, 43119), (76, 43152), (79, 43293), (81, 43377), (95, 44079), (104, 44295), (106, 44337), (107, 44346), (112, 44514), (115, 44631), (116, 44634), (120, 44685), (122, 44772), (125, 44844), (127, 44913),

Gene: Rahel_96 Start: 41004, Stop: 44804, Start Num: 3

Candidate Starts for Rahel_96:

(Start: 3 @41004 has 149 MA's), (4, 41058), (6, 41088), (10, 41157), (19, 41508), (24, 41622), (25, 41664), (28, 41721), (29, 41739), (31, 41757), (41, 41976), (43, 42048), (46, 42126), (47, 42150), (50, 42219), (51, 42222), (52, 42324), (54, 42342), (55, 42375), (56, 42390), (59, 42468), (60, 42471), (66, 42600), (67, 42645), (68, 42780), (71, 42837), (72, 42852), (74, 42864), (76, 42897), (79, 43038), (81, 43122), (95, 43824), (104, 44040), (106, 44082), (107, 44091), (112, 44259), (115, 44376), (116, 44379), (120, 44430), (122, 44517), (125, 44589), (127, 44658),

Gene: Rizal_93 Start: 40122, Stop: 43952, Start Num: 3

Candidate Starts for Rizal_93:

(Start: 3 @40122 has 149 MA's), (4, 40176), (6, 40206), (19, 40626), (24, 40740), (25, 40782), (28, 40869), (29, 40887), (31, 40905), (41, 41124), (43, 41196), (46, 41274), (47, 41298), (50, 41367), (51, 41370), (52, 41472), (54, 41490), (55, 41523), (56, 41538), (59, 41616), (60, 41619), (66, 41748), (67, 41793), (68, 41928), (71, 41985), (72, 42000), (74, 42012), (76, 42045), (79, 42186), (81, 42270), (95, 42972), (104, 43188), (106, 43230), (107, 43239), (112, 43407), (115, 43524), (116, 43527), (120, 43578), (122, 43665), (125, 43737), (127, 43806),

Gene: RoMag_91 Start: 40534, Stop: 44406, Start Num: 2

Candidate Starts for RoMag_91:

(Start: 2 @40534 has 6 MA's), (Start: 3 @40561 has 149 MA's), (4, 40615), (6, 40645), (10, 40714), (19, 41065), (24, 41179), (25, 41221), (28, 41323), (29, 41341), (31, 41359), (41, 41578), (43, 41650), (46, 41728), (47, 41752), (50, 41821), (51, 41824), (52, 41926), (54, 41944), (55, 41977), (56, 41992), (59, 42070), (60, 42073), (66, 42202), (67, 42247), (68, 42382), (71, 42439), (72, 42454), (74, 42466), (76, 42499), (79, 42640), (81, 42724), (95, 43426), (104, 43642), (106, 43684), (107, 43693), (112, 43861), (115, 43978), (116, 43981), (120, 44032), (122, 44119), (125, 44191), (127, 44260),

Gene: Ronan_90 Start: 38448, Stop: 42293, Start Num: 3

Candidate Starts for Ronan_90:

(Start: 3 @38448 has 149 MA's), (4, 38502), (6, 38532), (10, 38601), (19, 38952), (24, 39066), (25, 39108), (28, 39210), (29, 39228), (31, 39246), (41, 39465), (43, 39537), (46, 39615), (47, 39639), (50, 39708), (51, 39711), (52, 39813), (54, 39831), (55, 39864), (56, 39879), (59, 39957), (60, 39960), (66, 40089), (67, 40134), (68, 40269), (71, 40326), (72, 40341), (74, 40353), (76, 40386), (79, 40527), (81, 40611), (95, 41313), (104, 41529), (106, 41571), (107, 41580), (112, 41748), (115, 41865), (116, 41868), (120, 41919), (122, 42006), (125, 42078), (127, 42147),

Gene: Roots515_95 Start: 41398, Stop: 45228, Start Num: 3

Candidate Starts for Roots515_95:

(Start: 3 @41398 has 149 MA's), (4, 41452), (6, 41482), (19, 41902), (24, 42016), (25, 42058), (28, 42145), (29, 42163), (31, 42181), (41, 42400), (43, 42472), (46, 42550), (47, 42574), (50, 42643), (51, 42646), (52, 42748), (54, 42766), (55, 42799), (56, 42814), (59, 42892), (60, 42895), (66, 43024), (67, 43069), (68, 43204), (71, 43261), (72, 43276), (74, 43288), (76, 43321), (79, 43462), (81, 43546), (95, 44248), (104, 44464), (106, 44506), (107, 44515), (112, 44683), (115, 44800), (116, 44803), (120, 44854), (122, 44941), (125, 45013), (127, 45082),

Gene: Salacia_100 Start: 41483, Stop: 45283, Start Num: 3

Candidate Starts for Salacia_100:

(Start: 2 @41456 has 6 MA's), (Start: 3 @41483 has 149 MA's), (4, 41537), (6, 41567), (10, 41636), (19, 41987), (24, 42101), (25, 42143), (28, 42200), (29, 42218), (31, 42236), (41, 42455), (43, 42527), (46, 42605), (47, 42629), (50, 42698), (51, 42701), (52, 42803), (54, 42821), (55, 42854), (56, 42869), (59, 42947), (60, 42950), (66, 43079), (67, 43124), (68, 43259), (71, 43316), (72, 43331), (74, 43343), (76, 43376), (79, 43517), (81, 43601), (95, 44303), (104, 44519), (106, 44561), (107, 44570), (112, 44738), (115, 44855), (116, 44858), (120, 44909), (122, 44996), (125, 45068), (127, 45137),

Gene: Sauce_97 Start: 40496, Stop: 44332, Start Num: 3

Candidate Starts for Sauce_97:

(Start: 3 @40496 has 149 MA's), (4, 40550), (6, 40580), (10, 40649), (19, 41000), (24, 41114), (25, 41156), (28, 41249), (29, 41267), (31, 41285), (41, 41504), (43, 41576), (46, 41654), (47, 41678), (50, 41747), (51, 41750), (52, 41852), (54, 41870), (55, 41903), (56, 41918), (59, 41996), (60, 41999), (66, 42128), (67, 42173), (68, 42308), (71, 42365), (72, 42380), (74, 42392), (76, 42425), (79, 42566), (81, 42650), (95, 43352), (104, 43568), (106, 43610), (107, 43619), (112, 43787), (115, 43904), (116, 43907), (120, 43958), (122, 44045), (125, 44117), (127, 44186),

Gene: ScoobyDoobyDoo_89 Start: 39544, Stop: 42636, Start Num: 3

Candidate Starts for ScoobyDoobyDoo_89:

(Start: 3 @39544 has 149 MA's), (8, 39658), (9, 39673), (18, 40036), (24, 40195), (26, 40303), (43, 40699), (44, 40717), (45, 40735), (46, 40777), (49, 40843), (51, 40873), (53, 40981), (55, 41023), (56, 41038), (68, 41191), (69, 41203), (70, 41224), (73, 41266), (75, 41293), (85, 41476), (95, 41770), (96, 41782), (98, 41821), (101, 41875), (114, 42217), (117, 42232), (118, 42238), (122, 42361), (123, 42370), (127, 42490), (128, 42493), (129, 42511),

Gene: ScottMcG_93 Start: 40190, Stop: 44203, Start Num: 1

Candidate Starts for ScottMcG_93:

(Start: 1 @40190 has 18 MA's), (19, 40892), (24, 41006), (25, 41048), (28, 41123), (29, 41141), (30, 41147), (31, 41159), (35, 41198), (41, 41375), (43, 41447), (46, 41525), (47, 41549), (50, 41618), (51, 41621), (52, 41723), (54, 41741), (55, 41774), (56, 41789), (59, 41867), (60, 41870), (66, 41999), (67, 42044), (68, 42179), (71, 42236), (74, 42263), (76, 42296), (79, 42437), (81, 42521), (95, 43223), (104, 43439), (106, 43481), (107, 43490), (112, 43658), (115, 43775), (116, 43778), (120, 43829), (122, 43916), (125, 43988), (127, 44057),

Gene: Sebata_98 Start: 42132, Stop: 45932, Start Num: 3

Candidate Starts for Sebata_98:

(Start: 3 @42132 has 149 MA's), (4, 42186), (6, 42216), (10, 42285), (13, 42402), (19, 42636), (24, 42750), (25, 42792), (28, 42849), (29, 42867), (31, 42885), (41, 43104), (43, 43176), (46, 43254), (47, 43278), (50, 43347), (51, 43350), (52, 43452), (54, 43470), (55, 43503), (56, 43518), (59, 43596), (60, 43599), (66, 43728), (67, 43773), (68, 43908), (71, 43965), (72, 43980), (74, 43992), (76, 44025), (79, 44166), (81, 44250), (95, 44952), (104, 45168), (106, 45210), (107, 45219), (112, 45387), (115, 45504), (116, 45507), (120, 45558), (122, 45645), (125, 45717), (127, 45786),

Gene: Shaqnato_89 Start: 39371, Stop: 43207, Start Num: 3

Candidate Starts for Shaqnato_89:

(Start: 3 @39371 has 149 MA's), (4, 39425), (6, 39455), (10, 39524), (19, 39875), (24, 39989), (25, 40031), (28, 40124), (29, 40142), (31, 40160), (41, 40379), (43, 40451), (46, 40529), (47, 40553), (50, 40622), (51, 40625), (52, 40727), (54, 40745), (55, 40778), (56, 40793), (59, 40871), (60, 40874), (66, 41003), (67, 41048), (68, 41183), (71, 41240), (72, 41255), (74, 41267), (76, 41300), (79, 41441), (81, 41525), (95, 42227), (104, 42443), (106, 42485), (107, 42494), (112, 42662), (115, 42779), (116, 42782), (120, 42833), (122, 42920), (125, 42992), (127, 43061),

Gene: Shelob_98 Start: 42197, Stop: 46027, Start Num: 3

Candidate Starts for Shelob_98:

(Start: 3 @42197 has 149 MA's), (4, 42251), (6, 42281), (19, 42701), (24, 42815), (25, 42857), (28, 42944), (29, 42962), (31, 42980), (41, 43199), (43, 43271), (46, 43349), (47, 43373), (50, 43442), (51, 43445), (52, 43547), (54, 43565), (55, 43598), (56, 43613), (59, 43691), (60, 43694), (66, 43823), (67, 43868), (68, 44003), (71, 44060), (72, 44075), (74, 44087), (76, 44120), (79, 44261), (81, 44345), (95, 45047), (104, 45263), (106, 45305), (107, 45314), (112, 45482), (115, 45599), (116, 45602), (120, 45653), (122, 45740), (125, 45812), (127, 45881),

Gene: ShiaLabeouf_96 Start: 41406, Stop: 45239, Start Num: 3

Candidate Starts for ShiaLabeouf_96:

(Start: 3 @41406 has 149 MA's), (4, 41460), (6, 41490), (19, 41913), (24, 42027), (25, 42069), (28, 42156), (29, 42174), (31, 42192), (41, 42411), (43, 42483), (46, 42561), (47, 42585), (50, 42654), (51, 42657), (52, 42759), (54, 42777), (55, 42810), (56, 42825), (59, 42903), (60, 42906), (66, 43035), (67, 43080), (68, 43215), (71, 43272), (72, 43287), (74, 43299), (76, 43332), (79, 43473), (81, 43557), (95, 44259), (104, 44475), (106, 44517), (107, 44526), (112, 44694), (115, 44811), (116, 44814), (120, 44865), (122, 44952), (125, 45024), (127, 45093),

Gene: Shifa_85 Start: 38648, Stop: 42661, Start Num: 1

Candidate Starts for Shifa_85:

(Start: 1 @38648 has 18 MA's), (13, 39116), (19, 39350), (24, 39464), (25, 39506), (28, 39581), (29, 39599), (30, 39605), (31, 39617), (35, 39656), (41, 39833), (43, 39905), (46, 39983), (47, 40007), (50, 40076), (51, 40079), (52, 40181), (54, 40199), (55, 40232), (56, 40247), (59, 40325), (60, 40328), (66, 40457), (67, 40502), (68, 40637), (71, 40694), (74, 40721), (76, 40754), (79, 40895), (81, 40979), (95, 41681), (104, 41897), (106, 41939), (107, 41948), (112, 42116), (115, 42233), (116, 42236), (120, 42287), (122, 42374), (125, 42446), (127, 42515),

Gene: Shnickers_97 Start: 41403, Stop: 45203, Start Num: 3

Candidate Starts for Shnickers_97:

(Start: 3 @41403 has 149 MA's), (4, 41457), (6, 41487), (10, 41556), (19, 41907), (24, 42021), (25, 42063), (28, 42120), (29, 42138), (31, 42156), (41, 42375), (43, 42447), (46, 42525), (47, 42549), (50, 42618), (51, 42621), (52, 42723), (54, 42741), (55, 42774), (56, 42789), (59, 42867), (60, 42870), (66, 42999), (67, 43044), (68, 43179), (71, 43236), (72, 43251), (74, 43263), (76, 43296), (79, 43437), (81, 43521), (95, 44223), (104, 44439), (106, 44481), (107, 44490), (112, 44658), (115, 44775), (116, 44778), (120, 44829), (122, 44916), (125, 44988), (127, 45057),

Gene: Shrimp_96 Start: 41209, Stop: 45039, Start Num: 3

Candidate Starts for Shrimp_96:

(Start: 3 @41209 has 149 MA's), (4, 41263), (6, 41293), (19, 41713), (24, 41827), (25, 41869), (28, 41956), (29, 41974), (31, 41992), (41, 42211), (43, 42283), (46, 42361), (47, 42385), (50, 42454), (51, 42457), (52, 42559), (54, 42577), (55, 42610), (56, 42625), (59, 42703), (60, 42706), (66, 42835), (67, 42880), (68, 43015), (71, 43072), (72, 43087), (74, 43099), (76, 43132), (79, 43273), (81, 43357), (95, 44059), (104, 44275), (106, 44317), (107, 44326), (112, 44494), (115, 44611), (116, 44614), (120, 44665), (122, 44752), (125, 44824), (127, 44893),

Gene: SilverDipper_98 Start: 40647, Stop: 44447, Start Num: 3

Candidate Starts for SilverDipper_98:

(Start: 3 @40647 has 149 MA's), (4, 40701), (6, 40731), (10, 40800), (19, 41151), (24, 41265), (25, 41307), (28, 41364), (29, 41382), (31, 41400), (41, 41619), (43, 41691), (46, 41769), (47, 41793), (50, 41862), (51, 41865), (52, 41967), (54, 41985), (55, 42018), (56, 42033), (59, 42111), (60, 42114), (66, 42243), (67, 42288), (68, 42423), (71, 42480), (72, 42495), (74, 42507), (76, 42540), (79, 42681), (81, 42765), (95, 43467), (104, 43683), (106, 43725), (107, 43734), (112, 43902), (115, 44019), (116, 44022), (120, 44073), (122, 44160), (125, 44232), (127, 44301),

Gene: SmallFry_97 Start: 40598, Stop: 44428, Start Num: 3

Candidate Starts for SmallFry_97:

(Start: 3 @40598 has 149 MA's), (4, 40652), (6, 40682), (10, 40751), (19, 41102), (24, 41216), (25, 41258), (28, 41345), (29, 41363), (31, 41381), (41, 41600), (43, 41672), (46, 41750), (47, 41774), (50, 41843), (51, 41846), (52, 41948), (54, 41966), (55, 41999), (56, 42014), (59, 42092), (60, 42095), (66, 42224), (67, 42269), (68, 42404), (71, 42461), (72, 42476), (74, 42488), (76, 42521), (79, 42662), (81, 42746), (95, 43448), (104, 43664), (106, 43706), (107, 43715), (112, 43883), (115, 44000), (116, 44003), (120, 44054), (122, 44141), (125, 44213), (127, 44282),

Gene: Spec_93 Start: 41168, Stop: 44968, Start Num: 3

Candidate Starts for Spec_93:

(Start: 3 @41168 has 149 MA's), (4, 41222), (6, 41252), (10, 41321), (19, 41672), (24, 41786), (25, 41828), (28, 41885), (29, 41903), (31, 41921), (41, 42140), (43, 42212), (46, 42290), (47, 42314), (50, 42383), (51, 42386), (52, 42488), (54, 42506), (55, 42539), (56, 42554), (59, 42632), (60, 42635), (66, 42764), (67, 42809), (68, 42944), (71, 43001), (72, 43016), (74, 43028), (76, 43061), (79, 43202), (81, 43286), (95, 43988), (104, 44204), (106, 44246), (107, 44255), (112, 44423), (115, 44540), (116, 44543), (120, 44594), (122, 44681), (125, 44753), (127, 44822),

Gene: Specks_102 Start: 43302, Stop: 47102, Start Num: 3

Candidate Starts for Specks_102:

(Start: 2 @43275 has 6 MA's), (Start: 3 @43302 has 149 MA's), (4, 43356), (6, 43386), (10, 43455), (19, 43806), (24, 43920), (25, 43962), (28, 44019), (29, 44037), (31, 44055), (41, 44274), (43, 44346), (46, 44424), (47, 44448), (50, 44517), (51, 44520), (52, 44622), (54, 44640), (55, 44673), (56, 44688), (59, 44766), (60, 44769), (66, 44898), (67, 44943), (68, 45078), (71, 45135), (72, 45150), (74, 45162), (76, 45195), (79, 45336), (81, 45420), (95, 46122), (104, 46338), (106, 46380), (107, 46389), (112, 46557), (115, 46674), (116, 46677), (120, 46728), (122, 46815), (125, 46887), (127, 46956),

Gene: Sprinklers_92 Start: 39868, Stop: 43704, Start Num: 3

Candidate Starts for Sprinklers_92:

(Start: 3 @39868 has 149 MA's), (4, 39922), (6, 39952), (10, 40021), (19, 40372), (24, 40486), (25, 40528), (28, 40621), (29, 40639), (31, 40657), (41, 40876), (43, 40948), (46, 41026), (47, 41050), (50, 41119), (51, 41122), (52, 41224), (54, 41242), (55, 41275), (56, 41290), (59, 41368), (60, 41371), (66, 41500), (67, 41545), (68, 41680), (71, 41737), (72, 41752), (74, 41764), (76, 41797), (79, 41938), (81, 42022), (95, 42724), (104, 42940), (106, 42982), (107, 42991), (112, 43159), (115, 43276), (116, 43279), (120, 43330), (122, 43417), (125, 43489), (127, 43558),

Gene: Spud_96 Start: 41152, Stop: 44967, Start Num: 3

Candidate Starts for Spud_96:

(Start: 3 @41152 has 149 MA's), (4, 41206), (6, 41236), (19, 41656), (24, 41770), (25, 41812), (28, 41887), (29, 41905), (30, 41911), (31, 41923), (35, 41962), (41, 42139), (43, 42211), (46, 42289), (47, 42313), (50, 42382), (51, 42385), (52, 42487), (54, 42505), (55, 42538), (56, 42553), (59, 42631), (60, 42634), (66, 42763), (67, 42808), (68, 42943), (71, 43000), (74, 43027), (76, 43060), (79, 43201), (81, 43285), (95, 43987), (104, 44203), (106, 44245), (107, 44254), (112, 44422), (115, 44539), (116, 44542), (120, 44593), (122, 44680), (125, 44752), (127, 44821),

Gene: SrishMeg2525_95 Start: 41312, Stop: 45142, Start Num: 3

Candidate Starts for SrishMeg2525_95:

(Start: 3 @41312 has 149 MA's), (4, 41366), (6, 41396), (19, 41816), (24, 41930), (25, 41972), (28, 42059), (29, 42077), (31, 42095), (41, 42314), (43, 42386), (46, 42464), (47, 42488), (50, 42557), (51, 42560), (52, 42662), (54, 42680), (55, 42713), (56, 42728), (59, 42806), (60, 42809), (66, 42938), (67, 42983), (68, 43118), (71, 43175), (72, 43190), (74, 43202), (76, 43235), (79, 43376), (81, 43460), (95, 44162), (104, 44378), (106, 44420), (107, 44429), (112, 44597), (115, 44714), (116, 44717), (120, 44768), (122, 44855), (125, 44927), (127, 44996),

Gene: StephanieG_95 Start: 42021, Stop: 45866, Start Num: 3

Candidate Starts for StephanieG_95:

(Start: 3 @42021 has 149 MA's), (4, 42075), (6, 42105), (19, 42525), (24, 42639), (25, 42681), (28, 42783), (29, 42801), (31, 42819), (41, 43038), (43, 43110), (46, 43188), (47, 43212), (50, 43281), (51, 43284), (52, 43386), (54, 43404), (55, 43437), (56, 43452), (59, 43530), (60, 43533), (66, 43662), (67, 43707), (68, 43842), (71, 43899), (72, 43914), (74, 43926), (76, 43959), (79, 44100), (81, 44184), (95, 44886), (104, 45102), (106, 45144), (107, 45153), (112, 45321), (115, 45438), (116, 45441), (120, 45492), (122, 45579), (125, 45651), (127, 45720),

Gene: Stubby_89 Start: 39237, Stop: 43052, Start Num: 3

Candidate Starts for Stubby_89:

(Start: 3 @39237 has 149 MA's), (4, 39291), (6, 39321), (19, 39741), (24, 39855), (25, 39897), (28, 39972), (29, 39990), (30, 39996), (31, 40008), (35, 40047), (41, 40224), (43, 40296), (46, 40374), (47, 40398), (50, 40467), (51, 40470), (52, 40572), (54, 40590), (55, 40623), (56, 40638), (59, 40716), (60, 40719), (66, 40848), (67, 40893), (68, 41028), (71, 41085), (74, 41112), (76, 41145), (79, 41286), (81, 41370), (84, 41451), (95, 42072), (104, 42288), (106, 42330), (107, 42339), (112, 42507), (115, 42624), (116, 42627), (120, 42678), (122, 42765), (125, 42837), (127, 42906),

Gene: StubbySaigey_99 Start: 39935, Stop: 43735, Start Num: 3

Candidate Starts for StubbySaigey_99:

(Start: 3 @39935 has 149 MA's), (4, 39989), (6, 40019), (10, 40088), (19, 40439), (24, 40553), (25, 40595), (28, 40652), (29, 40670), (31, 40688), (41, 40907), (43, 40979), (46, 41057), (47, 41081), (50, 41150), (51, 41153), (52, 41255), (54, 41273), (55, 41306), (56, 41321), (59, 41399), (60, 41402), (66, 41531), (67, 41576), (68, 41711), (71, 41768), (72, 41783), (74, 41795), (76, 41828), (79, 41969), (81, 42053), (95, 42755), (104, 42971), (106, 43013), (107, 43022), (112, 43190), (115, 43307), (116, 43310), (120, 43361), (122, 43448), (125, 43520), (127, 43589),

Gene: Tainan_101 Start: 42595, Stop: 46425, Start Num: 3

Candidate Starts for Tainan_101:

(Start: 3 @42595 has 149 MA's), (4, 42649), (6, 42679), (19, 43099), (24, 43213), (25, 43255), (28, 43342), (29, 43360), (31, 43378), (41, 43597), (43, 43669), (46, 43747), (47, 43771), (50, 43840), (51, 43843), (52, 43945), (54, 43963), (55, 43996), (56, 44011), (59, 44089), (60, 44092), (66, 44221), (67, 44266), (68, 44401), (71, 44458), (72, 44473), (74, 44485), (76, 44518), (79, 44659), (81, 44743), (95, 45445), (104, 45661), (106, 45703), (107, 45712), (112, 45880), (115, 45997), (116, 46000), (120, 46051), (122, 46138), (125, 46210), (127, 46279),

Gene: Teardrop_96 Start: 40599, Stop: 44426, Start Num: 2

Candidate Starts for Teardrop_96:

(Start: 2 @40599 has 6 MA's), (Start: 3 @40626 has 149 MA's), (4, 40680), (6, 40710), (10, 40779), (19, 41130), (24, 41244), (25, 41286), (28, 41343), (29, 41361), (31, 41379), (41, 41598), (43, 41670), (46, 41748), (47, 41772), (50, 41841), (51, 41844), (52, 41946), (54, 41964), (55, 41997), (56, 42012), (59, 42090), (60, 42093), (66, 42222), (67, 42267), (68, 42402), (71, 42459), (72, 42474), (74, 42486), (76, 42519), (79, 42660), (81, 42744), (95, 43446), (104, 43662), (106, 43704), (107, 43713), (112, 43881), (115, 43998), (116, 44001), (120, 44052), (122, 44139), (125, 44211), (127, 44280),

Gene: TinyTim_96 Start: 41205, Stop: 45035, Start Num: 3

Candidate Starts for TinyTim_96:

(Start: 3 @41205 has 149 MA's), (4, 41259), (6, 41289), (19, 41709), (24, 41823), (25, 41865), (28, 41952), (29, 41970), (31, 41988), (41, 42207), (43, 42279), (46, 42357), (47, 42381), (50, 42450), (51, 42453), (52, 42555), (54, 42573), (55, 42606), (56, 42621), (59, 42699), (60, 42702), (66, 42831), (67, 42876), (68, 43011), (71, 43068), (72, 43083), (74, 43095), (76, 43128), (79, 43269), (81, 43353), (95, 44055), (104, 44271), (106, 44313), (107, 44322), (112, 44490), (115, 44607), (116, 44610), (120,

44661), (122, 44748), (125, 44820), (127, 44889),

Gene: Tonenili_110 Start: 45377, Stop: 49180, Start Num: 3

Candidate Starts for Tonenili_110:

(Start: 2 @45350 has 6 MA's), (Start: 3 @45377 has 149 MA's), (4, 45431), (6, 45461), (7, 45479), (9, 45500), (10, 45530), (15, 45803), (24, 46004), (25, 46046), (27, 46091), (29, 46121), (31, 46139), (40, 46352), (41, 46358), (43, 46430), (47, 46532), (48, 46547), (51, 46604), (52, 46706), (55, 46757), (56, 46772), (57, 46799), (60, 46853), (66, 46982), (67, 47027), (68, 47162), (71, 47219), (74, 47246), (78, 47396), (82, 47516), (93, 48053), (95, 48218), (100, 48329), (105, 48437), (107, 48476), (112, 48644), (114, 48752), (115, 48761), (116, 48764), (119, 48794), (120, 48818), (125, 48968), (126, 49022), (127, 49034),

Gene: Tortoise16_94 Start: 41200, Stop: 45027, Start Num: 2

Candidate Starts for Tortoise16_94:

(Start: 2 @41200 has 6 MA's), (Start: 3 @41227 has 149 MA's), (4, 41281), (6, 41311), (10, 41380), (19, 41731), (24, 41845), (25, 41887), (28, 41944), (29, 41962), (31, 41980), (41, 42199), (43, 42271), (46, 42349), (47, 42373), (50, 42442), (51, 42445), (52, 42547), (54, 42565), (55, 42598), (56, 42613), (59, 42691), (60, 42694), (66, 42823), (67, 42868), (68, 43003), (71, 43060), (72, 43075), (74, 43087), (76, 43120), (79, 43261), (81, 43345), (95, 44047), (104, 44263), (106, 44305), (107, 44314), (112, 44482), (115, 44599), (116, 44602), (120, 44653), (122, 44740), (125, 44812), (127, 44881),

Gene: Trinitium_93 Start: 39673, Stop: 43473, Start Num: 3

Candidate Starts for Trinitium_93:

(Start: 3 @39673 has 149 MA's), (4, 39727), (6, 39757), (10, 39826), (19, 40177), (24, 40291), (25, 40333), (28, 40390), (29, 40408), (31, 40426), (41, 40645), (43, 40717), (46, 40795), (47, 40819), (50, 40888), (51, 40891), (52, 40993), (54, 41011), (55, 41044), (56, 41059), (59, 41137), (60, 41140), (66, 41269), (67, 41314), (68, 41449), (71, 41506), (72, 41521), (74, 41533), (76, 41566), (79, 41707), (81, 41791), (95, 42493), (104, 42709), (106, 42751), (107, 42760), (112, 42928), (115, 43045), (116, 43048), (120, 43099), (122, 43186), (125, 43258), (127, 43327),

Gene: Turret_91 Start: 38902, Stop: 42915, Start Num: 1

Candidate Starts for Turret_91:

(Start: 1 @38902 has 18 MA's), (19, 39604), (24, 39718), (25, 39760), (28, 39835), (29, 39853), (30, 39859), (31, 39871), (35, 39910), (41, 40087), (43, 40159), (46, 40237), (47, 40261), (50, 40330), (51, 40333), (52, 40435), (54, 40453), (55, 40486), (56, 40501), (59, 40579), (60, 40582), (66, 40711), (67, 40756), (68, 40891), (71, 40948), (72, 40963), (74, 40975), (76, 41008), (79, 41149), (81, 41233), (95, 41935), (104, 42151), (106, 42193), (107, 42202), (112, 42370), (115, 42487), (116, 42490), (120, 42541), (122, 42628), (125, 42700), (127, 42769),

Gene: Tyke_98 Start: 42768, Stop: 46568, Start Num: 3

Candidate Starts for Tyke_98:

(Start: 2 @42741 has 6 MA's), (Start: 3 @42768 has 149 MA's), (4, 42822), (6, 42852), (10, 42921), (19, 43272), (24, 43386), (25, 43428), (28, 43485), (29, 43503), (31, 43521), (41, 43740), (43, 43812), (46, 43890), (47, 43914), (50, 43983), (51, 43986), (52, 44088), (54, 44106), (55, 44139), (56, 44154), (59, 44232), (60, 44235), (66, 44364), (67, 44409), (68, 44544), (71, 44601), (72, 44616), (74, 44628), (76, 44661), (79, 44802), (81, 44886), (95, 45588), (104, 45804), (106, 45846), (107, 45855), (112, 46023), (115, 46140), (116, 46143), (120, 46194), (122, 46281), (125, 46353), (127, 46422),

Gene: ValleyTerrace_97 Start: 40647, Stop: 44447, Start Num: 3

Candidate Starts for ValleyTerrace_97:

(Start: 3 @40647 has 149 MA's), (4, 40701), (6, 40731), (10, 40800), (19, 41151), (24, 41265), (25, 41307), (28, 41364), (29, 41382), (31, 41400), (41, 41619), (43, 41691), (46, 41769), (47, 41793), (50, 41862), (51, 41865), (52, 41967), (54, 41985), (55, 42018), (56, 42033), (59, 42111), (60, 42114), (66,

42243), (67, 42288), (68, 42423), (71, 42480), (72, 42495), (74, 42507), (76, 42540), (79, 42681), (81, 42765), (95, 43467), (104, 43683), (106, 43725), (107, 43734), (112, 43902), (115, 44019), (116, 44022), (120, 44073), (122, 44160), (125, 44232), (127, 44301),

Gene: Wally_95 Start: 39760, Stop: 43575, Start Num: 3

Candidate Starts for Wally_95:

(Start: 3 @39760 has 149 MA's), (4, 39814), (6, 39844), (19, 40264), (24, 40378), (25, 40420), (28, 40492), (29, 40510), (31, 40528), (41, 40747), (43, 40819), (46, 40897), (47, 40921), (50, 40990), (51, 40993), (52, 41095), (54, 41113), (55, 41146), (56, 41161), (59, 41239), (60, 41242), (66, 41371), (67, 41416), (68, 41551), (71, 41608), (72, 41623), (74, 41635), (76, 41668), (79, 41809), (81, 41893), (95, 42595), (104, 42811), (106, 42853), (107, 42862), (112, 43030), (115, 43147), (116, 43150), (120, 43201), (122, 43288), (125, 43360), (127, 43429),

Gene: Willis_97 Start: 41100, Stop: 44930, Start Num: 3

Candidate Starts for Willis_97:

(Start: 3 @41100 has 149 MA's), (4, 41154), (6, 41184), (19, 41604), (24, 41718), (25, 41760), (28, 41847), (29, 41865), (31, 41883), (41, 42102), (43, 42174), (46, 42252), (47, 42276), (50, 42345), (51, 42348), (52, 42450), (54, 42468), (55, 42501), (56, 42516), (59, 42594), (60, 42597), (66, 42726), (67, 42771), (68, 42906), (71, 42963), (72, 42978), (74, 42990), (76, 43023), (79, 43164), (81, 43248), (95, 43950), (104, 44166), (106, 44208), (107, 44217), (112, 44385), (115, 44502), (116, 44505), (120, 44556), (122, 44643), (125, 44715), (127, 44784),

Gene: Yassified_93 Start: 39906, Stop: 43751, Start Num: 3

Candidate Starts for Yassified_93:

(Start: 3 @39906 has 149 MA's), (4, 39960), (6, 39990), (10, 40059), (19, 40410), (24, 40524), (25, 40566), (28, 40668), (29, 40686), (31, 40704), (41, 40923), (43, 40995), (46, 41073), (47, 41097), (50, 41166), (51, 41169), (52, 41271), (54, 41289), (55, 41322), (56, 41337), (59, 41415), (60, 41418), (66, 41547), (67, 41592), (68, 41727), (71, 41784), (72, 41799), (74, 41811), (76, 41844), (79, 41985), (81, 42069), (95, 42771), (104, 42987), (106, 43029), (107, 43038), (112, 43206), (115, 43323), (116, 43326), (120, 43377), (122, 43464), (125, 43536), (127, 43605),

Gene: YemiJoy2021_97 Start: 41202, Stop: 45032, Start Num: 3

Candidate Starts for YemiJoy2021_97:

(Start: 3 @41202 has 149 MA's), (4, 41256), (6, 41286), (19, 41706), (24, 41820), (25, 41862), (28, 41949), (29, 41967), (31, 41985), (41, 42204), (43, 42276), (46, 42354), (47, 42378), (50, 42447), (51, 42450), (52, 42552), (54, 42570), (55, 42603), (56, 42618), (59, 42696), (60, 42699), (66, 42828), (67, 42873), (68, 43008), (71, 43065), (72, 43080), (74, 43092), (76, 43125), (79, 43266), (81, 43350), (95, 44052), (104, 44268), (106, 44310), (107, 44319), (112, 44487), (115, 44604), (116, 44607), (120, 44658), (122, 44745), (125, 44817), (127, 44886),

Gene: YoungMoneyMata_97 Start: 40398, Stop: 44198, Start Num: 3

Candidate Starts for YoungMoneyMata_97:

(Start: 3 @40398 has 149 MA's), (4, 40452), (6, 40482), (10, 40551), (19, 40902), (24, 41016), (25, 41058), (28, 41115), (29, 41133), (31, 41151), (41, 41370), (43, 41442), (46, 41520), (47, 41544), (50, 41613), (51, 41616), (52, 41718), (54, 41736), (55, 41769), (56, 41784), (59, 41862), (60, 41865), (66, 41994), (67, 42039), (68, 42174), (71, 42231), (72, 42246), (74, 42258), (76, 42291), (79, 42432), (81, 42516), (95, 43218), (104, 43434), (106, 43476), (107, 43485), (112, 43653), (115, 43770), (116, 43773), (120, 43824), (122, 43911), (125, 43983), (127, 44052),

Gene: Yucca_96 Start: 41124, Stop: 44954, Start Num: 3

Candidate Starts for Yucca_96:

(Start: 3 @41124 has 149 MA's), (4, 41178), (6, 41208), (19, 41628), (24, 41742), (25, 41784), (28, 41871), (29, 41889), (31, 41907), (41, 42126), (43, 42198), (46, 42276), (47, 42300), (50, 42369), (51,

42372), (52, 42474), (54, 42492), (55, 42525), (56, 42540), (59, 42618), (60, 42621), (66, 42750), (67, 42795), (68, 42930), (71, 42987), (72, 43002), (74, 43014), (76, 43047), (79, 43188), (81, 43272), (95, 43974), (104, 44190), (106, 44232), (107, 44241), (112, 44409), (115, 44526), (116, 44529), (120, 44580), (122, 44667), (125, 44739), (127, 44808),

Gene: Zalkecks_97 Start: 40890, Stop: 44720, Start Num: 3

Candidate Starts for Zalkecks_97:

(Start: 3 @40890 has 149 MA's), (4, 40944), (6, 40974), (19, 41394), (24, 41508), (25, 41550), (28, 41637), (29, 41655), (31, 41673), (41, 41892), (43, 41964), (46, 42042), (47, 42066), (50, 42135), (51, 42138), (52, 42240), (54, 42258), (55, 42291), (56, 42306), (59, 42384), (60, 42387), (66, 42516), (67, 42561), (68, 42696), (71, 42753), (72, 42768), (74, 42780), (76, 42813), (79, 42954), (81, 43038), (95, 43740), (104, 43956), (106, 43998), (107, 44007), (112, 44175), (115, 44292), (116, 44295), (120, 44346), (122, 44433), (125, 44505), (127, 44574),

Gene: Zeenon_98 Start: 40817, Stop: 44650, Start Num: 3

Candidate Starts for Zeenon_98:

(Start: 3 @40817 has 149 MA's), (4, 40871), (6, 40901), (19, 41324), (24, 41438), (25, 41480), (28, 41567), (29, 41585), (31, 41603), (41, 41822), (43, 41894), (46, 41972), (47, 41996), (50, 42065), (51, 42068), (52, 42170), (54, 42188), (55, 42221), (56, 42236), (59, 42314), (60, 42317), (66, 42446), (67, 42491), (68, 42626), (71, 42683), (72, 42698), (74, 42710), (76, 42743), (79, 42884), (81, 42968), (95, 43670), (104, 43886), (106, 43928), (107, 43937), (112, 44105), (115, 44222), (116, 44225), (120, 44276), (122, 44363), (125, 44435), (127, 44504),

Gene: ZygoTaiga_95 Start: 41977, Stop: 45807, Start Num: 3

Candidate Starts for ZygoTaiga_95:

(Start: 3 @41977 has 149 MA's), (4, 42031), (6, 42061), (19, 42481), (24, 42595), (25, 42637), (28, 42724), (29, 42742), (31, 42760), (41, 42979), (43, 43051), (46, 43129), (47, 43153), (50, 43222), (51, 43225), (52, 43327), (54, 43345), (55, 43378), (56, 43393), (59, 43471), (60, 43474), (66, 43603), (67, 43648), (68, 43783), (71, 43840), (72, 43855), (74, 43867), (76, 43900), (79, 44041), (81, 44125), (95, 44827), (104, 45043), (106, 45085), (107, 45094), (112, 45262), (115, 45379), (116, 45382), (120, 45433), (122, 45520), (125, 45592), (127, 45661),