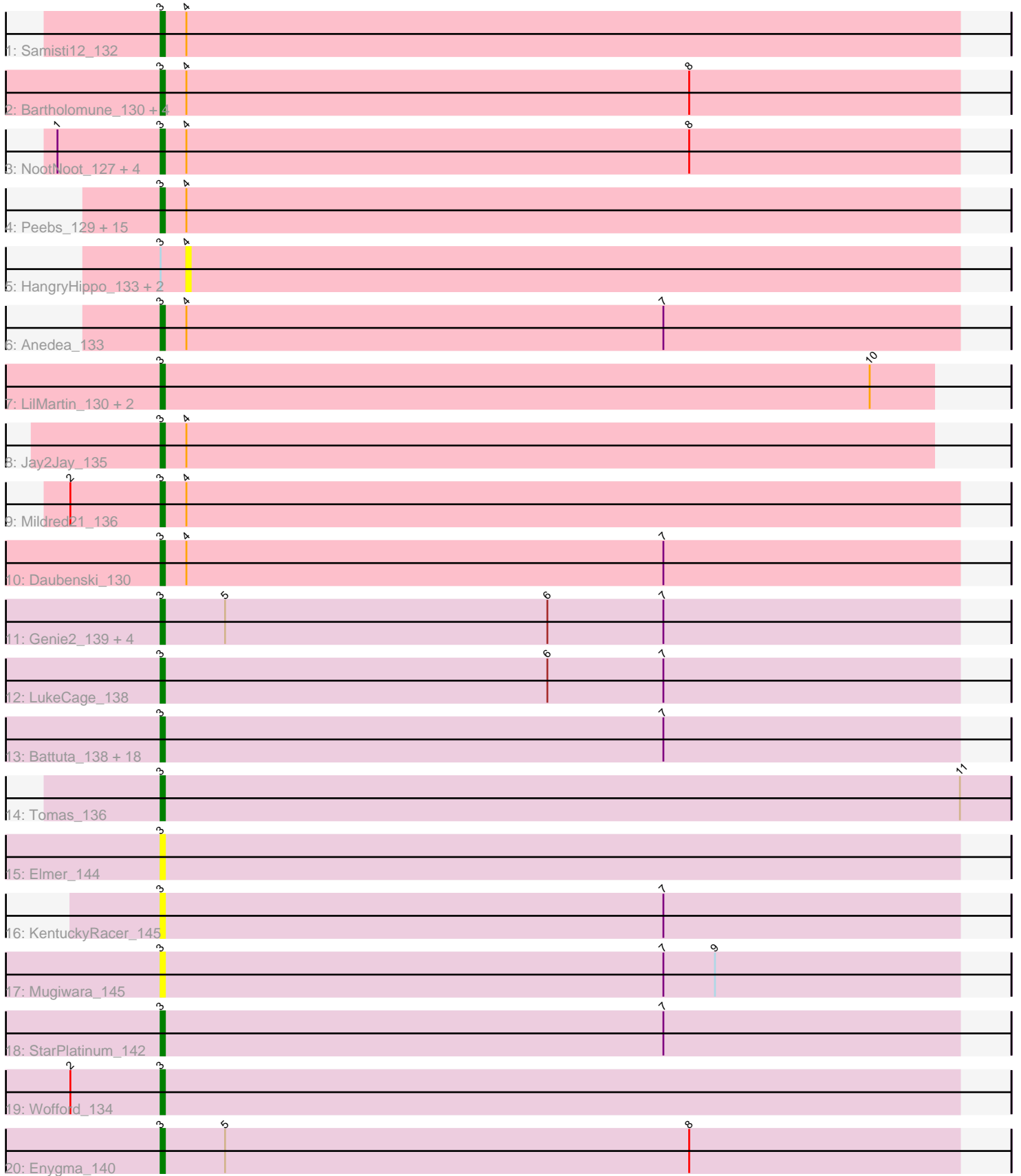


Pham 1871



Note: Tracks are now grouped by subcluster and scaled. Switching in subcluster is indicated by changes in track color. Track scale is now set by default to display the region 30 bp upstream of start 1 to 30 bp downstream of the last possible start. If this default region is judged to be packed too tightly with annotated starts, the track will be further scaled to only show that region of the ORF with annotated starts. This action will be indicated by adding "Zoomed" to the title. For starts, yellow indicates the location of called starts comprised solely of Glimmer/GeneMark auto-annotations, green indicates the location of called starts with at least 1 manual gene annotation.

## Pham 1871 Report

This analysis was run 07/09/24 on database version 566.

Pham number 1871 has 69 members, 12 are drafts.

Phages represented in each track:

- Track 1 : Samisti12\_132
- Track 2 : Bartholomune\_130, Squillum\_130, Paradiddles\_126, PinkiePie\_127, Liandry\_130
- Track 3 : NootNoot\_127, Braelyn\_131, WhereRU\_132, Navo\_128, Persimmon\_130
- Track 4 : Peebs\_129, Evy\_128, Bmoc\_134, Warpy\_134, Deutsch\_130, Lululemon\_132, Cursive\_129, Watermoore\_130, Leo04\_132, EGole\_134, Pepperwood\_130, PacManQ\_132, Cross\_131, Sushi23\_130, Tribute\_130, Targaryen\_131
- Track 5 : HangryHippo\_133, Larnav\_138, BlueOtter\_133
- Track 6 : Anedea\_133
- Track 7 : LilMartin\_130, MulchMansion\_130, Angela\_131
- Track 8 : Jay2Jay\_135
- Track 9 : Mildred21\_136
- Track 10 : Daubenski\_130
- Track 11 : Genie2\_139, BoomerJR\_139, Stanimal\_137, Yaboi\_138, Sollertia\_138
- Track 12 : LukeCage\_138
- Track 13 : Battuta\_138, IchabodCrane\_134, SaltySpittoon\_139, MindFlayer\_135, Karimac\_138, TomSawyer\_140, Birchlyn\_138, Amabiko\_140, PumpkinSpice\_141, Gibbi\_145, Spilled\_142, Starbow\_137, JimJam\_142, CeilingFan\_145, Jollison\_144, Spelly\_141, Wipeout\_133, Quaran19\_139, Bordeaux\_138
- Track 14 : Tomas\_136
- Track 15 : Elmer\_144
- Track 16 : KentuckyRacer\_145
- Track 17 : Mugiwara\_145
- Track 18 : StarPlatinum\_142
- Track 19 : Wofford\_134
- Track 20 : Enygma\_140

### ***Summary of Final Annotations (See graph section above for start numbers):***

The start number called the most often in the published annotations is 3, it was called in 57 of the 57 non-draft genes in the pham.

Genes that call this "Most Annotated" start:

- Amabiko\_140, Anedea\_133, Angela\_131, Bartholomune\_130, Battuta\_138, Birchlyn\_138, Bmoc\_134, BoomerJR\_139, Bordeaux\_138, Braelyn\_131, CeilingFan\_145, Cross\_131, Cursive\_129, Daubenski\_130, EGole\_134, Elmer\_144, Enygma\_140, Evy\_128, Genie2\_139, Gibbi\_145, IchabodCrane\_134, Jay2Jay\_135, JimJam\_142, Jollison\_144, Karimac\_138, KentuckyRacer\_145, Leo04\_132, Liandry\_130, LilMartin\_130, LukeCage\_138, Lululemon\_132, Mildred21\_136, MindFlayer\_135, Mugiwara\_145, MulchMansion\_130, Navo\_128, NootNoot\_127, PacManQ\_132, Paradiddles\_126, Peebs\_129, Pepperwood\_130, Persimmon\_130, PinkiePie\_127, PumpkinSpice\_141, Quarant19\_139, SaltySpittoon\_139, Samisti12\_132, Sollertia\_138, Spelly\_141, Spilled\_142, Squillium\_130, Stanimal\_137, StarPlatinum\_142, Starbow\_137, Sushi23\_130, Targaryen\_131, Teutsch\_130, TomSawyer\_140, Tomas\_136, Tribute\_130, Warpy\_134, Watermoore\_130, WhereRU\_132, Wipeout\_133, Wofford\_134, Yaboi\_138,

Genes that have the "Most Annotated" start but do not call it:

- BlueOtter\_133, HangryHippo\_133, Larnav\_138,

Genes that do not have the "Most Annotated" start:

- 

### Summary by start number:

Start 3:

- Found in 69 of 69 ( 100.0% ) of genes in pham
- Manual Annotations of this start: 57 of 57
- Called 95.7% of time when present
- Phage (with cluster) where this start called: Amabiko\_140 (BE2), Anedea\_133 (BE1), Angela\_131 (BE1), Bartholomune\_130 (BE1), Battuta\_138 (BE2), Birchlyn\_138 (BE2), Bmoc\_134 (BE1), BoomerJR\_139 (BE2), Bordeaux\_138 (BE2), Braelyn\_131 (BE1), CeilingFan\_145 (BE2), Cross\_131 (BE1), Cursive\_129 (BE1), Daubenski\_130 (BE1), EGole\_134 (BE1), Elmer\_144 (BE2), Enygma\_140 (BE2), Evy\_128 (BE1), Genie2\_139 (BE2), Gibbi\_145 (BE2), IchabodCrane\_134 (BE2), Jay2Jay\_135 (BE1), JimJam\_142 (BE2), Jollison\_144 (BE2), Karimac\_138 (BE2), KentuckyRacer\_145 (BE2), Leo04\_132 (BE1), Liandry\_130 (BE1), LilMartin\_130 (BE1), LukeCage\_138 (BE2), Lululemon\_132 (BE1), Mildred21\_136 (BE1), MindFlayer\_135 (BE2), Mugiwara\_145 (BE2), MulchMansion\_130 (BE1), Navo\_128 (BE1), NootNoot\_127 (BE1), PacManQ\_132 (BE1), Paradiddles\_126 (BE1), Peebs\_129 (BE1), Pepperwood\_130 (BE1), Persimmon\_130 (BE1), PinkiePie\_127 (BE1), PumpkinSpice\_141 (BE2), Quarant19\_139 (BE2), SaltySpittoon\_139 (BE2), Samisti12\_132 (BE1), Sollertia\_138 (BE2), Spelly\_141 (BE2), Spilled\_142 (BE2), Squillium\_130 (BE1), Stanimal\_137 (BE2), StarPlatinum\_142 (BE2), Starbow\_137 (BE2), Sushi23\_130 (BE1), Targaryen\_131 (BE1), Teutsch\_130 (BE1), TomSawyer\_140 (BE2), Tomas\_136 (BE2), Tribute\_130 (BE1), Warpy\_134 (BE1), Watermoore\_130 (BE1), WhereRU\_132 (BE1), Wipeout\_133 (BE2), Wofford\_134 (BE2), Yaboi\_138 (BE2),

Start 4:

- Found in 34 of 69 ( 49.3% ) of genes in pham
- No Manual Annotations of this start.
- Called 8.8% of time when present
- Phage (with cluster) where this start called: BlueOtter\_133 (BE1), HangryHippo\_133 (BE1), Larnav\_138 (BE1),

## Summary by clusters:

There are 2 clusters represented in this pham: BE2, BE1,

Info for manual annotations of cluster BE1:

- Start number 3 was manually annotated 31 times for cluster BE1.

Info for manual annotations of cluster BE2:

- Start number 3 was manually annotated 26 times for cluster BE2.

## Gene Information:

Gene: Amabiko\_140 Start: 84731, Stop: 84916, Start Num: 3

Candidate Starts for Amabiko\_140:

(Start: 3 @84731 has 57 MA's), (7, 84848),

Gene: Anedea\_133 Start: 82927, Stop: 83112, Start Num: 3

Candidate Starts for Anedea\_133:

(Start: 3 @82927 has 57 MA's), (4, 82933), (7, 83044),

Gene: Angela\_131 Start: 83463, Stop: 83642, Start Num: 3

Candidate Starts for Angela\_131:

(Start: 3 @83463 has 57 MA's), (10, 83628),

Gene: Bartholomune\_130 Start: 83268, Stop: 83453, Start Num: 3

Candidate Starts for Bartholomune\_130:

(Start: 3 @83268 has 57 MA's), (4, 83274), (8, 83391),

Gene: Battuta\_138 Start: 84704, Stop: 84889, Start Num: 3

Candidate Starts for Battuta\_138:

(Start: 3 @84704 has 57 MA's), (7, 84821),

Gene: Birchlyn\_138 Start: 82591, Stop: 82776, Start Num: 3

Candidate Starts for Birchlyn\_138:

(Start: 3 @82591 has 57 MA's), (7, 82708),

Gene: BlueOtter\_133 Start: 85507, Stop: 85686, Start Num: 4

Candidate Starts for BlueOtter\_133:

(Start: 3 @85501 has 57 MA's), (4, 85507),

Gene: Bmoc\_134 Start: 83741, Stop: 83926, Start Num: 3

Candidate Starts for Bmoc\_134:

(Start: 3 @83741 has 57 MA's), (4, 83747),

Gene: BoomerJR\_139 Start: 85040, Stop: 85225, Start Num: 3

Candidate Starts for BoomerJR\_139:

(Start: 3 @85040 has 57 MA's), (5, 85055), (6, 85130), (7, 85157),

Gene: Bordeaux\_138 Start: 84859, Stop: 85044, Start Num: 3

Candidate Starts for Bordeaux\_138:

(Start: 3 @84859 has 57 MA's), (7, 84976),

Gene: Braelyn\_131 Start: 84139, Stop: 84324, Start Num: 3  
Candidate Starts for Braelyn\_131:  
(1, 84115), (Start: 3 @84139 has 57 MA's), (4, 84145), (8, 84262),

Gene: CeilingFan\_145 Start: 84622, Stop: 84807, Start Num: 3  
Candidate Starts for CeilingFan\_145:  
(Start: 3 @84622 has 57 MA's), (7, 84739),

Gene: Cross\_131 Start: 85502, Stop: 85687, Start Num: 3  
Candidate Starts for Cross\_131:  
(Start: 3 @85502 has 57 MA's), (4, 85508),

Gene: Cursive\_129 Start: 83711, Stop: 83896, Start Num: 3  
Candidate Starts for Cursive\_129:  
(Start: 3 @83711 has 57 MA's), (4, 83717),

Gene: Daubenski\_130 Start: 84946, Stop: 85131, Start Num: 3  
Candidate Starts for Daubenski\_130:  
(Start: 3 @84946 has 57 MA's), (4, 84952), (7, 85063),

Gene: EGole\_134 Start: 86529, Stop: 86714, Start Num: 3  
Candidate Starts for EGole\_134:  
(Start: 3 @86529 has 57 MA's), (4, 86535),

Gene: Elmer\_144 Start: 86066, Stop: 86251, Start Num: 3  
Candidate Starts for Elmer\_144:  
(Start: 3 @86066 has 57 MA's),

Gene: Enygma\_140 Start: 86543, Stop: 86728, Start Num: 3  
Candidate Starts for Enygma\_140:  
(Start: 3 @86543 has 57 MA's), (5, 86558), (8, 86666),

Gene: Evy\_128 Start: 85258, Stop: 85437, Start Num: 3  
Candidate Starts for Evy\_128:  
(Start: 3 @85258 has 57 MA's), (4, 85264),

Gene: Genie2\_139 Start: 85154, Stop: 85339, Start Num: 3  
Candidate Starts for Genie2\_139:  
(Start: 3 @85154 has 57 MA's), (5, 85169), (6, 85244), (7, 85271),

Gene: Gibbi\_145 Start: 84843, Stop: 85028, Start Num: 3  
Candidate Starts for Gibbi\_145:  
(Start: 3 @84843 has 57 MA's), (7, 84960),

Gene: HangryHippo\_133 Start: 85507, Stop: 85686, Start Num: 4  
Candidate Starts for HangryHippo\_133:  
(Start: 3 @85501 has 57 MA's), (4, 85507),

Gene: IchabodCrane\_134 Start: 84432, Stop: 84617, Start Num: 3  
Candidate Starts for IchabodCrane\_134:  
(Start: 3 @84432 has 57 MA's), (7, 84549),

Gene: Jay2Jay\_135 Start: 86086, Stop: 86265, Start Num: 3  
Candidate Starts for Jay2Jay\_135:  
(Start: 3 @86086 has 57 MA's), (4, 86092),

Gene: JimJam\_142 Start: 85253, Stop: 85438, Start Num: 3  
Candidate Starts for JimJam\_142:  
(Start: 3 @85253 has 57 MA's), (7, 85370),

Gene: Jollison\_144 Start: 84687, Stop: 84872, Start Num: 3  
Candidate Starts for Jollison\_144:  
(Start: 3 @84687 has 57 MA's), (7, 84804),

Gene: Karimac\_138 Start: 84970, Stop: 85155, Start Num: 3  
Candidate Starts for Karimac\_138:  
(Start: 3 @84970 has 57 MA's), (7, 85087),

Gene: KentuckyRacer\_145 Start: 85118, Stop: 85303, Start Num: 3  
Candidate Starts for KentuckyRacer\_145:  
(Start: 3 @85118 has 57 MA's), (7, 85235),

Gene: Larnav\_138 Start: 85491, Stop: 85670, Start Num: 4  
Candidate Starts for Larnav\_138:  
(Start: 3 @85485 has 57 MA's), (4, 85491),

Gene: Leo04\_132 Start: 86001, Stop: 86186, Start Num: 3  
Candidate Starts for Leo04\_132:  
(Start: 3 @86001 has 57 MA's), (4, 86007),

Gene: Liandry\_130 Start: 84011, Stop: 84196, Start Num: 3  
Candidate Starts for Liandry\_130:  
(Start: 3 @84011 has 57 MA's), (4, 84017), (8, 84134),

Gene: LilMartin\_130 Start: 83365, Stop: 83544, Start Num: 3  
Candidate Starts for LilMartin\_130:  
(Start: 3 @83365 has 57 MA's), (10, 83530),

Gene: LukeCage\_138 Start: 85760, Stop: 85945, Start Num: 3  
Candidate Starts for LukeCage\_138:  
(Start: 3 @85760 has 57 MA's), (6, 85850), (7, 85877),

Gene: Lululemon\_132 Start: 84882, Stop: 85067, Start Num: 3  
Candidate Starts for Lululemon\_132:  
(Start: 3 @84882 has 57 MA's), (4, 84888),

Gene: Mildred21\_136 Start: 83935, Stop: 84120, Start Num: 3  
Candidate Starts for Mildred21\_136:  
(2, 83914), (Start: 3 @83935 has 57 MA's), (4, 83941),

Gene: MindFlayer\_135 Start: 84339, Stop: 84524, Start Num: 3  
Candidate Starts for MindFlayer\_135:  
(Start: 3 @84339 has 57 MA's), (7, 84456),

Gene: Mugiwara\_145 Start: 85580, Stop: 85765, Start Num: 3

Candidate Starts for Mugiwara\_145:  
(Start: 3 @85580 has 57 MA's), (7, 85697), (9, 85709),

Gene: MulchMansion\_130 Start: 83411, Stop: 83590, Start Num: 3  
Candidate Starts for MulchMansion\_130:  
(Start: 3 @83411 has 57 MA's), (10, 83576),

Gene: Navo\_128 Start: 83801, Stop: 83986, Start Num: 3  
Candidate Starts for Navo\_128:  
(1, 83777), (Start: 3 @83801 has 57 MA's), (4, 83807), (8, 83924),

Gene: NootNoot\_127 Start: 82910, Stop: 83095, Start Num: 3  
Candidate Starts for NootNoot\_127:  
(1, 82886), (Start: 3 @82910 has 57 MA's), (4, 82916), (8, 83033),

Gene: PacManQ\_132 Start: 84882, Stop: 85067, Start Num: 3  
Candidate Starts for PacManQ\_132:  
(Start: 3 @84882 has 57 MA's), (4, 84888),

Gene: Paradiddles\_126 Start: 85208, Stop: 85393, Start Num: 3  
Candidate Starts for Paradiddles\_126:  
(Start: 3 @85208 has 57 MA's), (4, 85214), (8, 85331),

Gene: Peebs\_129 Start: 85298, Stop: 85483, Start Num: 3  
Candidate Starts for Peebs\_129:  
(Start: 3 @85298 has 57 MA's), (4, 85304),

Gene: Pepperwood\_130 Start: 85428, Stop: 85613, Start Num: 3  
Candidate Starts for Pepperwood\_130:  
(Start: 3 @85428 has 57 MA's), (4, 85434),

Gene: Persimmon\_130 Start: 82844, Stop: 83029, Start Num: 3  
Candidate Starts for Persimmon\_130:  
(1, 82820), (Start: 3 @82844 has 57 MA's), (4, 82850), (8, 82967),

Gene: PinkiePie\_127 Start: 84011, Stop: 84196, Start Num: 3  
Candidate Starts for PinkiePie\_127:  
(Start: 3 @84011 has 57 MA's), (4, 84017), (8, 84134),

Gene: PumpkinSpice\_141 Start: 85295, Stop: 85480, Start Num: 3  
Candidate Starts for PumpkinSpice\_141:  
(Start: 3 @85295 has 57 MA's), (7, 85412),

Gene: Quaran19\_139 Start: 84721, Stop: 84906, Start Num: 3  
Candidate Starts for Quaran19\_139:  
(Start: 3 @84721 has 57 MA's), (7, 84838),

Gene: SaltySpittoon\_139 Start: 84734, Stop: 84919, Start Num: 3  
Candidate Starts for SaltySpittoon\_139:  
(Start: 3 @84734 has 57 MA's), (7, 84851),

Gene: Samisti12\_132 Start: 86680, Stop: 86865, Start Num: 3  
Candidate Starts for Samisti12\_132:

(Start: 3 @86680 has 57 MA's), (4, 86686),

Gene: Sollertia\_138 Start: 85154, Stop: 85339, Start Num: 3

Candidate Starts for Sollertia\_138:

(Start: 3 @85154 has 57 MA's), (5, 85169), (6, 85244), (7, 85271),

Gene: Spelly\_141 Start: 84686, Stop: 84871, Start Num: 3

Candidate Starts for Spelly\_141:

(Start: 3 @84686 has 57 MA's), (7, 84803),

Gene: Spilled\_142 Start: 84804, Stop: 84989, Start Num: 3

Candidate Starts for Spilled\_142:

(Start: 3 @84804 has 57 MA's), (7, 84921),

Gene: Squillium\_130 Start: 84013, Stop: 84198, Start Num: 3

Candidate Starts for Squillium\_130:

(Start: 3 @84013 has 57 MA's), (4, 84019), (8, 84136),

Gene: Stanimal\_137 Start: 85043, Stop: 85228, Start Num: 3

Candidate Starts for Stanimal\_137:

(Start: 3 @85043 has 57 MA's), (5, 85058), (6, 85133), (7, 85160),

Gene: StarPlatinum\_142 Start: 86203, Stop: 86388, Start Num: 3

Candidate Starts for StarPlatinum\_142:

(Start: 3 @86203 has 57 MA's), (7, 86320),

Gene: Starbow\_137 Start: 84706, Stop: 84891, Start Num: 3

Candidate Starts for Starbow\_137:

(Start: 3 @84706 has 57 MA's), (7, 84823),

Gene: Sushi23\_130 Start: 85654, Stop: 85839, Start Num: 3

Candidate Starts for Sushi23\_130:

(Start: 3 @85654 has 57 MA's), (4, 85660),

Gene: Targaryen\_131 Start: 86238, Stop: 86417, Start Num: 3

Candidate Starts for Targaryen\_131:

(Start: 3 @86238 has 57 MA's), (4, 86244),

Gene: Teutsch\_130 Start: 85859, Stop: 86044, Start Num: 3

Candidate Starts for Teutsch\_130:

(Start: 3 @85859 has 57 MA's), (4, 85865),

Gene: TomSawyer\_140 Start: 84752, Stop: 84937, Start Num: 3

Candidate Starts for TomSawyer\_140:

(Start: 3 @84752 has 57 MA's), (7, 84869),

Gene: Tomas\_136 Start: 86851, Stop: 87048, Start Num: 3

Candidate Starts for Tomas\_136:

(Start: 3 @86851 has 57 MA's), (11, 87037),

Gene: Tribute\_130 Start: 85846, Stop: 86031, Start Num: 3

Candidate Starts for Tribute\_130:

(Start: 3 @85846 has 57 MA's), (4, 85852),



Gene: Warpy\_134 Start: 85750, Stop: 85929, Start Num: 3

Candidate Starts for Warpy\_134:

(Start: 3 @85750 has 57 MA's), (4, 85756),

Gene: Watermoore\_130 Start: 86073, Stop: 86258, Start Num: 3

Candidate Starts for Watermoore\_130:

(Start: 3 @86073 has 57 MA's), (4, 86079),

Gene: WhereRU\_132 Start: 83596, Stop: 83781, Start Num: 3

Candidate Starts for WhereRU\_132:

(1, 83572), (Start: 3 @83596 has 57 MA's), (4, 83602), (8, 83719),

Gene: Wipeout\_133 Start: 85076, Stop: 85261, Start Num: 3

Candidate Starts for Wipeout\_133:

(Start: 3 @85076 has 57 MA's), (7, 85193),

Gene: Wofford\_134 Start: 86031, Stop: 86216, Start Num: 3

Candidate Starts for Wofford\_134:

(2, 86010), (Start: 3 @86031 has 57 MA's),

Gene: Yaboi\_138 Start: 84616, Stop: 84801, Start Num: 3

Candidate Starts for Yaboi\_138:

(Start: 3 @84616 has 57 MA's), (5, 84631), (6, 84706), (7, 84733),