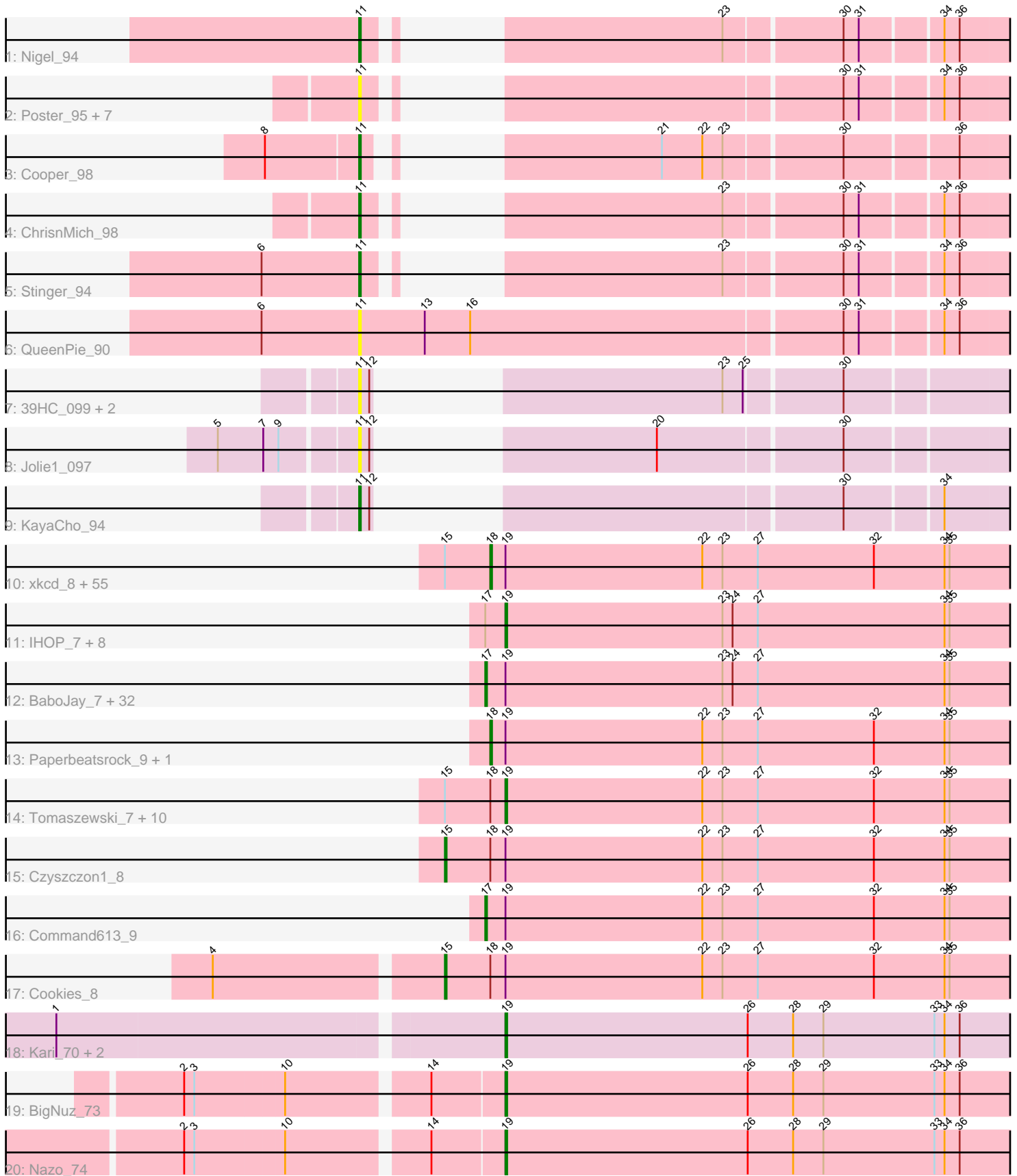


Pham 187917



Note: Tracks are now grouped by subcluster and scaled. Switching in subcluster is indicated by changes in track color. Track scale is now set by default to display the region 30 bp upstream of start 1 to 30 bp downstream of the last possible start. If this default region is judged to be packed too tightly with annotated starts, the track will be further scaled to only show that region of the ORF with annotated starts. This action will be indicated by adding "Zoomed" to the title. For starts, yellow indicates the location of called starts comprised solely of Glimmer/GeneMark auto-annotations, green indicates the location of called starts with at least 1 manual gene annotation.

Pham 187917 Report

This analysis was run 11/02/24 on database version 579.

Pham number 187917 has 137 members, 20 are drafts.

Phages represented in each track:

- Track 1 : Nigel_94
- Track 2 : Poster_95, Lambano_94, Ahwei_94, Antihero_96, Epah_96, GinPorsche_96, Hally898_94, Nanao_96
- Track 3 : Cooper_98
- Track 4 : ChrisnMich_98
- Track 5 : Stinger_94
- Track 6 : QueenPie_90
- Track 7 : 39HC_099, Hosp_094, 40BC_099
- Track 8 : Jolie1_097
- Track 9 : KayaCho_94
- Track 10 : xkcd_8, Elph10_8, Moldemort_8, Bench_9, Wiggin_9, NoSleep_8, Goldilocks_9, Cactus_9, MadamMonkfish_7, Sassay_7, Murphy_7, Adnama_9, Hopey_8, Bruin_7, Phaux_6, Lilac_9, Rakim_9, DoctorDiddles_8, Simpliphy_8, Easy2Say_8, Thresher_8, Highbury_8, MPhalcon_7, Phrux_7, Saints25_8, RiverMonster_7, Maxxinista_8, HanKaySha_8, Holt_9, 244_8, Dumbo_7, GooberAzure_9, Nimrod_7, Pumpkin_8, Policronamos_7, Gemini_9, Tarkin_9, Quallification_9, Petra64142_8, Argent26_9, Buck_7, Contagion_7, MISSy_7, Willez_7, Stark_8, Mosby_7, Murica_6, Ukulele_7, GoldenSpark_9, Xandras_9, Lilizi_9, Hoonter_9, HufflyPuff_6, Nala_7, Kanye_9, AmericanBeauty_9
- Track 11 : IHOP_7, Tuco_8, Phaja_7, Icee_7, Miniwave_8, Balomoji_7, Inca_7, Gator_6, Teaspoon_7
- Track 12 : BaboJay_7, Marshmallow_8, Rimmer_7, Pharsalus_8, Flypotenuse_6, SirDuracell_7, Henry_8, NelitzaMV_8, BigBubba_7, CrystalP_8, BadStone_7, ChotaBhai_7, ABCat_7, Kostya_8, Dusk_7, StellaBean_8, Traaww1_6, Bask21_7, ShamWow_8, Mindy_8, Toto_8, Porky_6, DrDrey_8, Harella_6, Amao_8, SophKB_8, Pat3_7, Myrale_8, YassJohnny_8, Emmina_7, TeardropMSU_7, BilboSwaggins_8, Daikon_6
- Track 13 : Paperbeatsrock_9, Youngblood_7
- Track 14 : Tomaszewski_7, Cjw1_7, Palpatine_7, StolenFromERC_9, Terminus_7, Misfit_7, PhatBacter_7, Stank_9, JeTaimie_9, Filch_8, ShereKhan_9
- Track 15 : Czyszczo1_8
- Track 16 : Command613_9
- Track 17 : Cookies_8
- Track 18 : Kari_70, Bartholomew_69, Venti_71
- Track 19 : BigNuz_73
- Track 20 : Nazo_74

Summary of Final Annotations (See graph section above for start numbers):

The start number called the most often in the published annotations is 18, it was called in 56 of the 117 non-draft genes in the pham.

Genes that call this "Most Annotated" start:

- 244_8, Adnama_9, AmericanBeauty_9, Argent26_9, Bench_9, Bruin_7, Buck_7, Cactus_9, Contagion_7, DoctorDiddles_8, Dumbo_7, Easy2Say_8, Elph10_8, Gemini_9, GoldenSpark_9, Goldilocks_9, GooberAzure_9, HanKaySha_8, Highbury_8, Holt_9, Hoonter_9, Hopey_8, HufflyPuff_6, Kanye_9, Lilac_9, Lilizi_9, MISSy_7, MPhalcon_7, MadamMonkfish_7, Maxxinista_8, Moldemort_8, Mosby_7, Murica_6, Murphy_7, Nala_7, Nimrod_7, NoSleep_8, Paperbeatsrock_9, Petra64142_8, Phaux_6, Phrux_7, Policronamos_7, Pumpkin_8, Quallification_9, Rakim_9, RiverMonster_7, Saints25_8, Sassay_7, Simpliphy_8, Stark_8, Tarkin_9, Thresher_8, Ukulele_7, Wiggin_9, Willez_7, Xandras_9, Youngblood_7, xkcd_8,

Genes that have the "Most Annotated" start but do not call it:

- Cjw1_7, Cookies_8, Czyszczonek_8, Filch_8, JeTaime_9, Misfit_7, Palpatine_7, PhatBacter_7, ShereKhan_9, Stank_9, StolenFromERC_9, Terminus_7, Tomaszewski_7,

Genes that do not have the "Most Annotated" start:

- 39HC_099, 40BC_099, ABCat_7, Ahwei_94, Amao_8, Antihero_96, BaboJay_7, BadStone_7, Balomoji_7, Bartholomew_69, Bask21_7, BigBubba_7, BigNuz_73, BilboSwaggins_8, ChotaBhai_7, ChrisnMich_98, Command613_9, Cooper_98, CrystalP_8, Daikon_6, DrDrey_8, Dusk_7, Emmina_7, Epah_96, Flypotenuse_6, Gator_6, GinPorsche_96, Hally898_94, Harella_6, Henry_8, Hosp_094, IHOP_7, Icee_7, Inca_7, Jolie1_097, Kari_70, KayaCho_94, Kostya_8, Lambano_94, Marshmallow_8, Mindy_8, Miniwave_8, Myrale_8, Nanao_96, Nazo_74, NelitzaMV_8, Nigel_94, Pat3_7, Phaja_7, Pharsalus_8, Porky_6, Poster_95, QueenPie_90, Rimmer_7, ShamWow_8, SirDuracell_7, SophKB_8, StellaBean_8, Stinger_94, TeardropMSU_7, Teaspoon_7, Toto_8, Traaww1_6, Tuco_8, Venti_71, YassJohnny_8,

Summary by start number:

Start 11:

- Found in 18 of 137 (13.1%) of genes in pham
- Manual Annotations of this start: 5 of 117
- Called 100.0% of time when present
- Phage (with cluster) where this start called: 39HC_099 (B6), 40BC_099 (B6), Ahwei_94 (B4), Antihero_96 (B4), ChrisnMich_98 (B4), Cooper_98 (B4), Epah_96 (B4), GinPorsche_96 (B4), Hally898_94 (B4), Hosp_094 (B6), Jolie1_097 (B6), KayaCho_94 (B6), Lambano_94 (B4), Nanao_96 (B4), Nigel_94 (B4), Poster_95 (B4), QueenPie_90 (B4), Stinger_94 (B4),

Start 15:

- Found in 69 of 137 (50.4%) of genes in pham
- Manual Annotations of this start: 2 of 117
- Called 2.9% of time when present

- Phage (with cluster) where this start called: Cookies_8 (E), Czyszczone1_8 (E),

Start 17:

- Found in 43 of 137 (31.4%) of genes in pham
- Manual Annotations of this start: 31 of 117
- Called 79.1% of time when present
- Phage (with cluster) where this start called: ABCat_7 (E), Amao_8 (E), BaboJay_7 (E), BadStone_7 (E), Bask21_7 (E), BigBubba_7 (E), BilboSwaggins_8 (E), ChotaBhai_7 (E), Command613_9 (E), CrystalP_8 (E), Daikon_6 (E), DrDrey_8 (E), Dusk_7 (E), Emmina_7 (E), Flypotenuse_6 (E), Harella_6 (E), Henry_8 (E), Kostya_8 (E), Marshmallow_8 (E), Mindy_8 (E), Myrale_8 (E), NelitzaMV_8 (E), Pat3_7 (E), Pharsalus_8 (E), Porky_6 (E), Rimmer_7 (E), ShamWow_8 (E), SirDuracell_7 (E), SophKB_8 (E), StellaBean_8 (E), TeardropMSU_7 (E), Toto_8 (E), Traaww1_6 (E), YassJohnny_8 (E),

Start 18:

- Found in 71 of 137 (51.8%) of genes in pham
- Manual Annotations of this start: 56 of 117
- Called 81.7% of time when present
- Phage (with cluster) where this start called: 244_8 (E), Adnama_9 (E), AmericanBeauty_9 (E), Argent26_9 (E), Bench_9 (E), Bruin_7 (E), Buck_7 (E), Cactus_9 (E), Contagion_7 (E), DoctorDiddles_8 (E), Dumbo_7 (E), Easy2Say_8 (E), Elph10_8 (E), Gemini_9 (E), GoldenSpark_9 (E), Goldilocks_9 (E), GooberAzure_9 (E), HanKaySha_8 (E), Highbury_8 (E), Holt_9 (E), Hoonter_9 (E), Hopey_8 (E), HufflyPuff_6 (E), Kanye_9 (E), Lilac_9 (E), Lilizi_9 (E), MISSy_7 (E), MPhalcon_7 (E), MadamMonkfish_7 (E), Maxxinista_8 (E), Moldemort_8 (E), Mosby_7 (E), Murica_6 (E), Murphy_7 (E), Nala_7 (E), Nimrod_7 (E), NoSleep_8 (E), Paperbeatsrock_9 (E), Petra64142_8 (E), Phaux_6 (E), Phrux_7 (E), Policronamos_7 (E), Pumpkin_8 (E), Quallification_9 (E), Rakim_9 (E), RiverMonster_7 (E), Saints25_8 (E), Sassay_7 (E), Simpliphy_8 (E), Stark_8 (E), Tarkin_9 (E), Thresher_8 (E), Ukulele_7 (E), Wiggin_9 (E), Willez_7 (E), Xandras_9 (E), Youngblood_7 (E), xkcd_8 (E),

Start 19:

- Found in 119 of 137 (86.9%) of genes in pham
- Manual Annotations of this start: 23 of 117
- Called 21.0% of time when present
- Phage (with cluster) where this start called: Balomoji_7 (E), Bartholomew_69 (P1), BigNuz_73 (P4), Cjw1_7 (E), Filch_8 (E), Gator_6 (E), IHOP_7 (E), Icee_7 (E), Inca_7 (E), JeTaime_9 (E), Kari_70 (P1), Miniwave_8 (E), Misfit_7 (E), Nazo_74 (P4), Palpatine_7 (E), Phaja_7 (E), PhatBacter_7 (E), ShereKhan_9 (E), Stank_9 (E), StolenFromERC_9 (E), Teaspoon_7 (E), Terminus_7 (E), Tomaszewski_7 (E), Tuco_8 (E), Venti_71 (P1),

Summary by clusters:

There are 5 clusters represented in this pham: B4, B6, P1, E, P4,

Info for manual annotations of cluster B4:

- Start number 11 was manually annotated 4 times for cluster B4.

Info for manual annotations of cluster B6:

- Start number 11 was manually annotated 1 time for cluster B6.

Info for manual annotations of cluster E:

- Start number 15 was manually annotated 2 times for cluster E.
- Start number 17 was manually annotated 31 times for cluster E.
- Start number 18 was manually annotated 56 times for cluster E.
- Start number 19 was manually annotated 19 times for cluster E.

Info for manual annotations of cluster P1:

- Start number 19 was manually annotated 2 times for cluster P1.

Info for manual annotations of cluster P4:

- Start number 19 was manually annotated 2 times for cluster P4.

Gene Information:

Gene: 244_8 Start: 2232, Stop: 1924, Start Num: 18

Candidate Starts for 244_8:

(Start: 15 @2259 has 2 MA's), (Start: 18 @2232 has 56 MA's), (Start: 19 @2223 has 23 MA's), (22, 2106), (23, 2094), (27, 2073), (32, 2004), (34, 1962), (35, 1959),

Gene: 39HC_099 Start: 70611, Stop: 70294, Start Num: 11

Candidate Starts for 39HC_099:

(Start: 11 @70611 has 5 MA's), (12, 70605), (23, 70473), (25, 70461), (30, 70407),

Gene: 40BC_099 Start: 70611, Stop: 70294, Start Num: 11

Candidate Starts for 40BC_099:

(Start: 11 @70611 has 5 MA's), (12, 70605), (23, 70473), (25, 70461), (30, 70407),

Gene: ABCat_7 Start: 2267, Stop: 1956, Start Num: 17

Candidate Starts for ABCat_7:

(Start: 17 @2267 has 31 MA's), (Start: 19 @2255 has 23 MA's), (23, 2126), (24, 2120), (27, 2105), (34, 1994), (35, 1991),

Gene: Adnama_9 Start: 2464, Stop: 2156, Start Num: 18

Candidate Starts for Adnama_9:

(Start: 15 @2491 has 2 MA's), (Start: 18 @2464 has 56 MA's), (Start: 19 @2455 has 23 MA's), (22, 2338), (23, 2326), (27, 2305), (32, 2236), (34, 2194), (35, 2191),

Gene: Ahwei_94 Start: 69585, Stop: 69253, Start Num: 11

Candidate Starts for Ahwei_94:

(Start: 11 @69585 has 5 MA's), (30, 69375), (31, 69366), (34, 69321), (36, 69312),

Gene: Amao_8 Start: 2267, Stop: 1956, Start Num: 17

Candidate Starts for Amao_8:

(Start: 17 @2267 has 31 MA's), (Start: 19 @2255 has 23 MA's), (23, 2126), (24, 2120), (27, 2105), (34, 1994), (35, 1991),

Gene: AmericanBeauty_9 Start: 2461, Stop: 2153, Start Num: 18

Candidate Starts for AmericanBeauty_9:

(Start: 15 @2488 has 2 MA's), (Start: 18 @2461 has 56 MA's), (Start: 19 @2452 has 23 MA's), (22, 2335), (23, 2323), (27, 2302), (32, 2233), (34, 2191), (35, 2188),

Gene: Antihero_96 Start: 69510, Stop: 69178, Start Num: 11

Candidate Starts for Antihero_96:

(Start: 11 @69510 has 5 MA's), (30, 69300), (31, 69291), (34, 69246), (36, 69237),

Gene: Argent26_9 Start: 2464, Stop: 2156, Start Num: 18

Candidate Starts for Argent26_9:

(Start: 15 @2491 has 2 MA's), (Start: 18 @2464 has 56 MA's), (Start: 19 @2455 has 23 MA's), (22, 2338), (23, 2326), (27, 2305), (32, 2236), (34, 2194), (35, 2191),

Gene: BaboJay_7 Start: 1798, Stop: 1475, Start Num: 17

Candidate Starts for BaboJay_7:

(Start: 17 @1798 has 31 MA's), (Start: 19 @1786 has 23 MA's), (23, 1657), (24, 1651), (27, 1636), (34, 1525), (35, 1522),

Gene: BadStone_7 Start: 2267, Stop: 1956, Start Num: 17

Candidate Starts for BadStone_7:

(Start: 17 @2267 has 31 MA's), (Start: 19 @2255 has 23 MA's), (23, 2126), (24, 2120), (27, 2105), (34, 1994), (35, 1991),

Gene: Balomoji_7 Start: 1989, Stop: 1678, Start Num: 19

Candidate Starts for Balomoji_7:

(Start: 17 @2001 has 31 MA's), (Start: 19 @1989 has 23 MA's), (23, 1860), (24, 1854), (27, 1839), (34, 1728), (35, 1725),

Gene: Bartholomew_69 Start: 43466, Stop: 43765, Start Num: 19

Candidate Starts for Bartholomew_69:

(1, 43211), (Start: 19 @43466 has 23 MA's), (26, 43610), (28, 43637), (29, 43655), (33, 43721), (34, 43727), (36, 43736),

Gene: Bask21_7 Start: 1927, Stop: 1604, Start Num: 17

Candidate Starts for Bask21_7:

(Start: 17 @1927 has 31 MA's), (Start: 19 @1915 has 23 MA's), (23, 1786), (24, 1780), (27, 1765), (34, 1654), (35, 1651),

Gene: Bench_9 Start: 2538, Stop: 2230, Start Num: 18

Candidate Starts for Bench_9:

(Start: 15 @2565 has 2 MA's), (Start: 18 @2538 has 56 MA's), (Start: 19 @2529 has 23 MA's), (22, 2412), (23, 2400), (27, 2379), (32, 2310), (34, 2268), (35, 2265),

Gene: BigBubba_7 Start: 1927, Stop: 1604, Start Num: 17

Candidate Starts for BigBubba_7:

(Start: 17 @1927 has 31 MA's), (Start: 19 @1915 has 23 MA's), (23, 1786), (24, 1780), (27, 1765), (34, 1654), (35, 1651),

Gene: BigNuz_73 Start: 45865, Stop: 46164, Start Num: 19

Candidate Starts for BigNuz_73:

(2, 45688), (3, 45694), (10, 45745), (14, 45823), (Start: 19 @45865 has 23 MA's), (26, 46009), (28, 46036), (29, 46054), (33, 46120), (34, 46126), (36, 46135),

Gene: BilboSwaggins_8 Start: 2267, Stop: 1956, Start Num: 17

Candidate Starts for BilboSwaggins_8:

(Start: 17 @2267 has 31 MA's), (Start: 19 @2255 has 23 MA's), (23, 2126), (24, 2120), (27, 2105), (34, 1994), (35, 1991),

Gene: Bruin_7 Start: 1859, Stop: 1551, Start Num: 18

Candidate Starts for Bruin_7:

(Start: 15 @1886 has 2 MA's), (Start: 18 @1859 has 56 MA's), (Start: 19 @1850 has 23 MA's), (22, 1733), (23, 1721), (27, 1700), (32, 1631), (34, 1589), (35, 1586),

Gene: Buck_7 Start: 1924, Stop: 1604, Start Num: 18

Candidate Starts for Buck_7:

(Start: 15 @1951 has 2 MA's), (Start: 18 @1924 has 56 MA's), (Start: 19 @1915 has 23 MA's), (22, 1798), (23, 1786), (27, 1765), (32, 1696), (34, 1654), (35, 1651),

Gene: Cactus_9 Start: 2464, Stop: 2156, Start Num: 18

Candidate Starts for Cactus_9:

(Start: 15 @2491 has 2 MA's), (Start: 18 @2464 has 56 MA's), (Start: 19 @2455 has 23 MA's), (22, 2338), (23, 2326), (27, 2305), (32, 2236), (34, 2194), (35, 2191),

Gene: ChotaBhai_7 Start: 1927, Stop: 1604, Start Num: 17

Candidate Starts for ChotaBhai_7:

(Start: 17 @1927 has 31 MA's), (Start: 19 @1915 has 23 MA's), (23, 1786), (24, 1780), (27, 1765), (34, 1654), (35, 1651),

Gene: ChrisnMich_98 Start: 69201, Stop: 68869, Start Num: 11

Candidate Starts for ChrisnMich_98:

(Start: 11 @69201 has 5 MA's), (23, 69057), (30, 68991), (31, 68982), (34, 68937), (36, 68928),

Gene: Cjw1_7 Start: 2232, Stop: 1933, Start Num: 19

Candidate Starts for Cjw1_7:

(Start: 15 @2268 has 2 MA's), (Start: 18 @2241 has 56 MA's), (Start: 19 @2232 has 23 MA's), (22, 2115), (23, 2103), (27, 2082), (32, 2013), (34, 1971), (35, 1968),

Gene: Command613_9 Start: 2338, Stop: 2027, Start Num: 17

Candidate Starts for Command613_9:

(Start: 17 @2338 has 31 MA's), (Start: 19 @2326 has 23 MA's), (22, 2209), (23, 2197), (27, 2176), (32, 2107), (34, 2065), (35, 2062),

Gene: Contagion_7 Start: 1859, Stop: 1551, Start Num: 18

Candidate Starts for Contagion_7:

(Start: 15 @1886 has 2 MA's), (Start: 18 @1859 has 56 MA's), (Start: 19 @1850 has 23 MA's), (22, 1733), (23, 1721), (27, 1700), (32, 1631), (34, 1589), (35, 1586),

Gene: Cookies_8 Start: 2164, Stop: 1829, Start Num: 15

Candidate Starts for Cookies_8:

(4, 2293), (Start: 15 @2164 has 2 MA's), (Start: 18 @2137 has 56 MA's), (Start: 19 @2128 has 23 MA's), (22, 2011), (23, 1999), (27, 1978), (32, 1909), (34, 1867), (35, 1864),

Gene: Cooper_98 Start: 69570, Stop: 69241, Start Num: 11

Candidate Starts for Cooper_98:

(8, 69624), (Start: 11 @69570 has 5 MA's), (21, 69465), (22, 69441), (23, 69429), (30, 69363), (36, 69300),

Gene: CrystalP_8 Start: 2267, Stop: 1956, Start Num: 17

Candidate Starts for CrystalP_8:

(Start: 17 @2267 has 31 MA's), (Start: 19 @2255 has 23 MA's), (23, 2126), (24, 2120), (27, 2105), (34, 1994), (35, 1991),

Gene: Czyszczone1_8 Start: 2447, Stop: 2112, Start Num: 15

Candidate Starts for Czyszczone1_8:

(Start: 15 @2447 has 2 MA's), (Start: 18 @2420 has 56 MA's), (Start: 19 @2411 has 23 MA's), (22, 2294), (23, 2282), (27, 2261), (32, 2192), (34, 2150), (35, 2147),

Gene: Daikon_6 Start: 2001, Stop: 1678, Start Num: 17

Candidate Starts for Daikon_6:

(Start: 17 @2001 has 31 MA's), (Start: 19 @1989 has 23 MA's), (23, 1860), (24, 1854), (27, 1839), (34, 1728), (35, 1725),

Gene: DoctorDiddles_8 Start: 2417, Stop: 2109, Start Num: 18

Candidate Starts for DoctorDiddles_8:

(Start: 15 @2444 has 2 MA's), (Start: 18 @2417 has 56 MA's), (Start: 19 @2408 has 23 MA's), (22, 2291), (23, 2279), (27, 2258), (32, 2189), (34, 2147), (35, 2144),

Gene: DrDrey_8 Start: 2267, Stop: 1956, Start Num: 17

Candidate Starts for DrDrey_8:

(Start: 17 @2267 has 31 MA's), (Start: 19 @2255 has 23 MA's), (23, 2126), (24, 2120), (27, 2105), (34, 1994), (35, 1991),

Gene: Dumbo_7 Start: 2232, Stop: 1924, Start Num: 18

Candidate Starts for Dumbo_7:

(Start: 15 @2259 has 2 MA's), (Start: 18 @2232 has 56 MA's), (Start: 19 @2223 has 23 MA's), (22, 2106), (23, 2094), (27, 2073), (32, 2004), (34, 1962), (35, 1959),

Gene: Dusk_7 Start: 1927, Stop: 1604, Start Num: 17

Candidate Starts for Dusk_7:

(Start: 17 @1927 has 31 MA's), (Start: 19 @1915 has 23 MA's), (23, 1786), (24, 1780), (27, 1765), (34, 1654), (35, 1651),

Gene: Easy2Say_8 Start: 2214, Stop: 1906, Start Num: 18

Candidate Starts for Easy2Say_8:

(Start: 15 @2241 has 2 MA's), (Start: 18 @2214 has 56 MA's), (Start: 19 @2205 has 23 MA's), (22, 2088), (23, 2076), (27, 2055), (32, 1986), (34, 1944), (35, 1941),

Gene: Elph10_8 Start: 2235, Stop: 1927, Start Num: 18

Candidate Starts for Elph10_8:

(Start: 15 @2262 has 2 MA's), (Start: 18 @2235 has 56 MA's), (Start: 19 @2226 has 23 MA's), (22, 2109), (23, 2097), (27, 2076), (32, 2007), (34, 1965), (35, 1962),

Gene: Emmina_7 Start: 1798, Stop: 1475, Start Num: 17

Candidate Starts for Emmina_7:

(Start: 17 @1798 has 31 MA's), (Start: 19 @1786 has 23 MA's), (23, 1657), (24, 1651), (27, 1636), (34, 1525), (35, 1522),

Gene: Epah_96 Start: 69510, Stop: 69178, Start Num: 11

Candidate Starts for Epah_96:

(Start: 11 @69510 has 5 MA's), (30, 69300), (31, 69291), (34, 69246), (36, 69237),

Gene: Filch_8 Start: 2220, Stop: 1921, Start Num: 19

Candidate Starts for Filch_8:

(Start: 15 @2256 has 2 MA's), (Start: 18 @2229 has 56 MA's), (Start: 19 @2220 has 23 MA's), (22, 2103), (23, 2091), (27, 2070), (32, 2001), (34, 1959), (35, 1956),

Gene: Flypotenuse_6 Start: 1883, Stop: 1560, Start Num: 17

Candidate Starts for Flypotenuse_6:

(Start: 17 @1883 has 31 MA's), (Start: 19 @1871 has 23 MA's), (23, 1742), (24, 1736), (27, 1721), (34, 1610), (35, 1607),

Gene: Gator_6 Start: 1871, Stop: 1560, Start Num: 19

Candidate Starts for Gator_6:

(Start: 17 @1883 has 31 MA's), (Start: 19 @1871 has 23 MA's), (23, 1742), (24, 1736), (27, 1721), (34, 1610), (35, 1607),

Gene: Gemini_9 Start: 2464, Stop: 2156, Start Num: 18

Candidate Starts for Gemini_9:

(Start: 15 @2491 has 2 MA's), (Start: 18 @2464 has 56 MA's), (Start: 19 @2455 has 23 MA's), (22, 2338), (23, 2326), (27, 2305), (32, 2236), (34, 2194), (35, 2191),

Gene: GinPorsche_96 Start: 69507, Stop: 69175, Start Num: 11

Candidate Starts for GinPorsche_96:

(Start: 11 @69507 has 5 MA's), (30, 69297), (31, 69288), (34, 69243), (36, 69234),

Gene: GoldenSpark_9 Start: 2464, Stop: 2156, Start Num: 18

Candidate Starts for GoldenSpark_9:

(Start: 15 @2491 has 2 MA's), (Start: 18 @2464 has 56 MA's), (Start: 19 @2455 has 23 MA's), (22, 2338), (23, 2326), (27, 2305), (32, 2236), (34, 2194), (35, 2191),

Gene: Goldilocks_9 Start: 2464, Stop: 2156, Start Num: 18

Candidate Starts for Goldilocks_9:

(Start: 15 @2491 has 2 MA's), (Start: 18 @2464 has 56 MA's), (Start: 19 @2455 has 23 MA's), (22, 2338), (23, 2326), (27, 2305), (32, 2236), (34, 2194), (35, 2191),

Gene: GooberAzure_9 Start: 2464, Stop: 2156, Start Num: 18

Candidate Starts for GooberAzure_9:

(Start: 15 @2491 has 2 MA's), (Start: 18 @2464 has 56 MA's), (Start: 19 @2455 has 23 MA's), (22, 2338), (23, 2326), (27, 2305), (32, 2236), (34, 2194), (35, 2191),

Gene: Hally898_94 Start: 69347, Stop: 69015, Start Num: 11

Candidate Starts for Hally898_94:

(Start: 11 @69347 has 5 MA's), (30, 69137), (31, 69128), (34, 69083), (36, 69074),

Gene: HanKaySha_8 Start: 2420, Stop: 2112, Start Num: 18

Candidate Starts for HanKaySha_8:

(Start: 15 @2447 has 2 MA's), (Start: 18 @2420 has 56 MA's), (Start: 19 @2411 has 23 MA's), (22, 2294), (23, 2282), (27, 2261), (32, 2192), (34, 2150), (35, 2147),

Gene: Harella_6 Start: 1883, Stop: 1560, Start Num: 17

Candidate Starts for Harella_6:

(Start: 17 @1883 has 31 MA's), (Start: 19 @1871 has 23 MA's), (23, 1742), (24, 1736), (27, 1721), (34, 1610), (35, 1607),

Gene: Henry_8 Start: 2267, Stop: 1956, Start Num: 17

Candidate Starts for Henry_8:

(Start: 17 @2267 has 31 MA's), (Start: 19 @2255 has 23 MA's), (23, 2126), (24, 2120), (27, 2105), (34, 1994), (35, 1991),

Gene: Highbury_8 Start: 2429, Stop: 2121, Start Num: 18

Candidate Starts for Highbury_8:

(Start: 15 @2456 has 2 MA's), (Start: 18 @2429 has 56 MA's), (Start: 19 @2420 has 23 MA's), (22, 2303), (23, 2291), (27, 2270), (32, 2201), (34, 2159), (35, 2156),

Gene: Holt_9 Start: 2535, Stop: 2227, Start Num: 18

Candidate Starts for Holt_9:

(Start: 15 @2562 has 2 MA's), (Start: 18 @2535 has 56 MA's), (Start: 19 @2526 has 23 MA's), (22, 2409), (23, 2397), (27, 2376), (32, 2307), (34, 2265), (35, 2262),

Gene: Hoonter_9 Start: 2464, Stop: 2156, Start Num: 18

Candidate Starts for Hoonter_9:

(Start: 15 @2491 has 2 MA's), (Start: 18 @2464 has 56 MA's), (Start: 19 @2455 has 23 MA's), (22, 2338), (23, 2326), (27, 2305), (32, 2236), (34, 2194), (35, 2191),

Gene: Hokey_8 Start: 2229, Stop: 1921, Start Num: 18

Candidate Starts for Hokey_8:

(Start: 15 @2256 has 2 MA's), (Start: 18 @2229 has 56 MA's), (Start: 19 @2220 has 23 MA's), (22, 2103), (23, 2091), (27, 2070), (32, 2001), (34, 1959), (35, 1956),

Gene: Hosp_094 Start: 67915, Stop: 67598, Start Num: 11

Candidate Starts for Hosp_094:

(Start: 11 @67915 has 5 MA's), (12, 67909), (23, 67777), (25, 67765), (30, 67711),

Gene: HufflyPuff_6 Start: 1815, Stop: 1507, Start Num: 18

Candidate Starts for HufflyPuff_6:

(Start: 15 @1842 has 2 MA's), (Start: 18 @1815 has 56 MA's), (Start: 19 @1806 has 23 MA's), (22, 1689), (23, 1677), (27, 1656), (32, 1587), (34, 1545), (35, 1542),

Gene: IHOP_7 Start: 1915, Stop: 1604, Start Num: 19

Candidate Starts for IHOP_7:

(Start: 17 @1927 has 31 MA's), (Start: 19 @1915 has 23 MA's), (23, 1786), (24, 1780), (27, 1765), (34, 1654), (35, 1651),

Gene: Icee_7 Start: 1915, Stop: 1604, Start Num: 19

Candidate Starts for Icee_7:

(Start: 17 @1927 has 31 MA's), (Start: 19 @1915 has 23 MA's), (23, 1786), (24, 1780), (27, 1765), (34, 1654), (35, 1651),

Gene: Inca_7 Start: 1928, Stop: 1629, Start Num: 19

Candidate Starts for Inca_7:

(Start: 17 @1940 has 31 MA's), (Start: 19 @1928 has 23 MA's), (23, 1799), (24, 1793), (27, 1778), (34, 1667), (35, 1664),

Gene: JeTaime_9 Start: 2267, Stop: 1968, Start Num: 19

Candidate Starts for JeTaime_9:

(Start: 15 @2303 has 2 MA's), (Start: 18 @2276 has 56 MA's), (Start: 19 @2267 has 23 MA's), (22, 2150), (23, 2138), (27, 2117), (32, 2048), (34, 2006), (35, 2003),

Gene: Jolie1_097 Start: 70103, Stop: 69783, Start Num: 11

Candidate Starts for Jolie1_097:

(5, 70181), (7, 70154), (9, 70145), (Start: 11 @70103 has 5 MA's), (12, 70097), (20, 70004), (30, 69899),

Gene: Kanye_9 Start: 2464, Stop: 2156, Start Num: 18

Candidate Starts for Kanye_9:

(Start: 15 @2491 has 2 MA's), (Start: 18 @2464 has 56 MA's), (Start: 19 @2455 has 23 MA's), (22, 2338), (23, 2326), (27, 2305), (32, 2236), (34, 2194), (35, 2191),

Gene: Kari_70 Start: 44950, Stop: 45249, Start Num: 19

Candidate Starts for Kari_70:

(1, 44695), (Start: 19 @44950 has 23 MA's), (26, 45094), (28, 45121), (29, 45139), (33, 45205), (34, 45211), (36, 45220),

Gene: KayaCho_94 Start: 69889, Stop: 69572, Start Num: 11

Candidate Starts for KayaCho_94:

(Start: 11 @69889 has 5 MA's), (12, 69883), (30, 69685), (34, 69631),

Gene: Kostya_8 Start: 2267, Stop: 1956, Start Num: 17

Candidate Starts for Kostya_8:

(Start: 17 @2267 has 31 MA's), (Start: 19 @2255 has 23 MA's), (23, 2126), (24, 2120), (27, 2105), (34, 1994), (35, 1991),

Gene: Lambano_94 Start: 69347, Stop: 69015, Start Num: 11

Candidate Starts for Lambano_94:

(Start: 11 @69347 has 5 MA's), (30, 69137), (31, 69128), (34, 69083), (36, 69074),

Gene: Lilac_9 Start: 2255, Stop: 1947, Start Num: 18

Candidate Starts for Lilac_9:

(Start: 15 @2282 has 2 MA's), (Start: 18 @2255 has 56 MA's), (Start: 19 @2246 has 23 MA's), (22, 2129), (23, 2117), (27, 2096), (32, 2027), (34, 1985), (35, 1982),

Gene: Lilizi_9 Start: 2467, Stop: 2159, Start Num: 18

Candidate Starts for Lilizi_9:

(Start: 15 @2494 has 2 MA's), (Start: 18 @2467 has 56 MA's), (Start: 19 @2458 has 23 MA's), (22, 2341), (23, 2329), (27, 2308), (32, 2239), (34, 2197), (35, 2194),

Gene: MISSy_7 Start: 1859, Stop: 1551, Start Num: 18

Candidate Starts for MISSy_7:

(Start: 15 @1886 has 2 MA's), (Start: 18 @1859 has 56 MA's), (Start: 19 @1850 has 23 MA's), (22, 1733), (23, 1721), (27, 1700), (32, 1631), (34, 1589), (35, 1586),

Gene: MPhalcon_7 Start: 1859, Stop: 1551, Start Num: 18

Candidate Starts for MPhalcon_7:

(Start: 15 @1886 has 2 MA's), (Start: 18 @1859 has 56 MA's), (Start: 19 @1850 has 23 MA's), (22, 1733), (23, 1721), (27, 1700), (32, 1631), (34, 1589), (35, 1586),

Gene: MadamMonkfish_7 Start: 2096, Stop: 1788, Start Num: 18

Candidate Starts for MadamMonkfish_7:

(Start: 15 @2123 has 2 MA's), (Start: 18 @2096 has 56 MA's), (Start: 19 @2087 has 23 MA's), (22, 1970), (23, 1958), (27, 1937), (32, 1868), (34, 1826), (35, 1823),

Gene: Marshmallow_8 Start: 2267, Stop: 1956, Start Num: 17

Candidate Starts for Marshmallow_8:

(Start: 17 @2267 has 31 MA's), (Start: 19 @2255 has 23 MA's), (23, 2126), (24, 2120), (27, 2105), (34, 1994), (35, 1991),

Gene: Maxxinista_8 Start: 2235, Stop: 1927, Start Num: 18

Candidate Starts for Maxxinista_8:

(Start: 15 @2262 has 2 MA's), (Start: 18 @2235 has 56 MA's), (Start: 19 @2226 has 23 MA's), (22, 2109), (23, 2097), (27, 2076), (32, 2007), (34, 1965), (35, 1962),

Gene: Mindy_8 Start: 2138, Stop: 1827, Start Num: 17

Candidate Starts for Mindy_8:

(Start: 17 @2138 has 31 MA's), (Start: 19 @2126 has 23 MA's), (23, 1997), (24, 1991), (27, 1976), (34, 1865), (35, 1862),

Gene: Miniwave_8 Start: 2255, Stop: 1956, Start Num: 19

Candidate Starts for Miniwave_8:

(Start: 17 @2267 has 31 MA's), (Start: 19 @2255 has 23 MA's), (23, 2126), (24, 2120), (27, 2105), (34, 1994), (35, 1991),

Gene: Misfit_7 Start: 1850, Stop: 1551, Start Num: 19

Candidate Starts for Misfit_7:

(Start: 15 @1886 has 2 MA's), (Start: 18 @1859 has 56 MA's), (Start: 19 @1850 has 23 MA's), (22, 1733), (23, 1721), (27, 1700), (32, 1631), (34, 1589), (35, 1586),

Gene: Moldemort_8 Start: 2420, Stop: 2112, Start Num: 18

Candidate Starts for Moldemort_8:

(Start: 15 @2447 has 2 MA's), (Start: 18 @2420 has 56 MA's), (Start: 19 @2411 has 23 MA's), (22, 2294), (23, 2282), (27, 2261), (32, 2192), (34, 2150), (35, 2147),

Gene: Mosby_7 Start: 1859, Stop: 1551, Start Num: 18

Candidate Starts for Mosby_7:

(Start: 15 @1886 has 2 MA's), (Start: 18 @1859 has 56 MA's), (Start: 19 @1850 has 23 MA's), (22, 1733), (23, 1721), (27, 1700), (32, 1631), (34, 1589), (35, 1586),

Gene: Murica_6 Start: 1815, Stop: 1507, Start Num: 18

Candidate Starts for Murica_6:

(Start: 15 @1842 has 2 MA's), (Start: 18 @1815 has 56 MA's), (Start: 19 @1806 has 23 MA's), (22, 1689), (23, 1677), (27, 1656), (32, 1587), (34, 1545), (35, 1542),

Gene: Murphy_7 Start: 2137, Stop: 1829, Start Num: 18

Candidate Starts for Murphy_7:

(Start: 15 @2164 has 2 MA's), (Start: 18 @2137 has 56 MA's), (Start: 19 @2128 has 23 MA's), (22, 2011), (23, 1999), (27, 1978), (32, 1909), (34, 1867), (35, 1864),

Gene: Myrale_8 Start: 2138, Stop: 1827, Start Num: 17

Candidate Starts for Myrale_8:

(Start: 17 @2138 has 31 MA's), (Start: 19 @2126 has 23 MA's), (23, 1997), (24, 1991), (27, 1976), (34, 1865), (35, 1862),

Gene: Nala_7 Start: 1859, Stop: 1551, Start Num: 18

Candidate Starts for Nala_7:

(Start: 15 @1886 has 2 MA's), (Start: 18 @1859 has 56 MA's), (Start: 19 @1850 has 23 MA's), (22, 1733), (23, 1721), (27, 1700), (32, 1631), (34, 1589), (35, 1586),

Gene: Nanao_96 Start: 69360, Stop: 69028, Start Num: 11

Candidate Starts for Nanao_96:

(Start: 11 @69360 has 5 MA's), (30, 69150), (31, 69141), (34, 69096), (36, 69087),

Gene: Nazo_74 Start: 45751, Stop: 46050, Start Num: 19

Candidate Starts for Nazo_74:

(2, 45574), (3, 45580), (10, 45631), (14, 45709), (Start: 19 @45751 has 23 MA's), (26, 45895), (28, 45922), (29, 45940), (33, 46006), (34, 46012), (36, 46021),

Gene: NelitzaMV_8 Start: 2138, Stop: 1827, Start Num: 17

Candidate Starts for NelitzaMV_8:

(Start: 17 @2138 has 31 MA's), (Start: 19 @2126 has 23 MA's), (23, 1997), (24, 1991), (27, 1976), (34, 1865), (35, 1862),

Gene: Nigel_94 Start: 68852, Stop: 68520, Start Num: 11

Candidate Starts for Nigel_94:

(Start: 11 @68852 has 5 MA's), (23, 68708), (30, 68642), (31, 68633), (34, 68588), (36, 68579),

Gene: Nimrod_7 Start: 1924, Stop: 1604, Start Num: 18

Candidate Starts for Nimrod_7:

(Start: 15 @1951 has 2 MA's), (Start: 18 @1924 has 56 MA's), (Start: 19 @1915 has 23 MA's), (22, 1798), (23, 1786), (27, 1765), (32, 1696), (34, 1654), (35, 1651),

Gene: NoSleep_8 Start: 2417, Stop: 2109, Start Num: 18

Candidate Starts for NoSleep_8:

(Start: 15 @2444 has 2 MA's), (Start: 18 @2417 has 56 MA's), (Start: 19 @2408 has 23 MA's), (22, 2291), (23, 2279), (27, 2258), (32, 2189), (34, 2147), (35, 2144),

Gene: Palpatine_7 Start: 1847, Stop: 1548, Start Num: 19

Candidate Starts for Palpatine_7:

(Start: 15 @1883 has 2 MA's), (Start: 18 @1856 has 56 MA's), (Start: 19 @1847 has 23 MA's), (22, 1730), (23, 1718), (27, 1697), (32, 1628), (34, 1586), (35, 1583),

Gene: Paperbeatsrock_9 Start: 2464, Stop: 2156, Start Num: 18

Candidate Starts for Paperbeatsrock_9:

(Start: 18 @2464 has 56 MA's), (Start: 19 @2455 has 23 MA's), (22, 2338), (23, 2326), (27, 2305), (32, 2236), (34, 2194), (35, 2191),

Gene: Pat3_7 Start: 1967, Stop: 1644, Start Num: 17

Candidate Starts for Pat3_7:

(Start: 17 @1967 has 31 MA's), (Start: 19 @1955 has 23 MA's), (23, 1826), (24, 1820), (27, 1805), (34, 1694), (35, 1691),

Gene: Petra64142_8 Start: 2140, Stop: 1832, Start Num: 18

Candidate Starts for Petra64142_8:

(Start: 15 @2167 has 2 MA's), (Start: 18 @2140 has 56 MA's), (Start: 19 @2131 has 23 MA's), (22, 2014), (23, 2002), (27, 1981), (32, 1912), (34, 1870), (35, 1867),

Gene: Phaja_7 Start: 1915, Stop: 1604, Start Num: 19

Candidate Starts for Phaja_7:

(Start: 17 @1927 has 31 MA's), (Start: 19 @1915 has 23 MA's), (23, 1786), (24, 1780), (27, 1765), (34, 1654), (35, 1651),

Gene: Pharsalus_8 Start: 2267, Stop: 1956, Start Num: 17

Candidate Starts for Pharsalus_8:

(Start: 17 @2267 has 31 MA's), (Start: 19 @2255 has 23 MA's), (23, 2126), (24, 2120), (27, 2105), (34, 1994), (35, 1991),

Gene: PhatBacter_7 Start: 1850, Stop: 1551, Start Num: 19

Candidate Starts for PhatBacter_7:

(Start: 15 @1886 has 2 MA's), (Start: 18 @1859 has 56 MA's), (Start: 19 @1850 has 23 MA's), (22, 1733), (23, 1721), (27, 1700), (32, 1631), (34, 1589), (35, 1586),

Gene: Phaux_6 Start: 1859, Stop: 1551, Start Num: 18

Candidate Starts for Phaux_6:

(Start: 15 @1886 has 2 MA's), (Start: 18 @1859 has 56 MA's), (Start: 19 @1850 has 23 MA's), (22, 1733), (23, 1721), (27, 1700), (32, 1631), (34, 1589), (35, 1586),

Gene: Phrux_7 Start: 2215, Stop: 1907, Start Num: 18

Candidate Starts for Phrux_7:

(Start: 15 @2242 has 2 MA's), (Start: 18 @2215 has 56 MA's), (Start: 19 @2206 has 23 MA's), (22, 2089), (23, 2077), (27, 2056), (32, 1987), (34, 1945), (35, 1942),

Gene: Policronamos_7 Start: 1859, Stop: 1551, Start Num: 18

Candidate Starts for Policronamos_7:

(Start: 15 @1886 has 2 MA's), (Start: 18 @1859 has 56 MA's), (Start: 19 @1850 has 23 MA's), (22, 1733), (23, 1721), (27, 1700), (32, 1631), (34, 1589), (35, 1586),

Gene: Porky_6 Start: 1798, Stop: 1475, Start Num: 17

Candidate Starts for Porky_6:

(Start: 17 @1798 has 31 MA's), (Start: 19 @1786 has 23 MA's), (23, 1657), (24, 1651), (27, 1636), (34, 1525), (35, 1522),

Gene: Poster_95 Start: 69361, Stop: 69029, Start Num: 11

Candidate Starts for Poster_95:

(Start: 11 @69361 has 5 MA's), (30, 69151), (31, 69142), (34, 69097), (36, 69088),

Gene: Pumpkin_8 Start: 2233, Stop: 1925, Start Num: 18

Candidate Starts for Pumpkin_8:

(Start: 15 @2260 has 2 MA's), (Start: 18 @2233 has 56 MA's), (Start: 19 @2224 has 23 MA's), (22, 2107), (23, 2095), (27, 2074), (32, 2005), (34, 1963), (35, 1960),

Gene: Quallification_9 Start: 2464, Stop: 2156, Start Num: 18

Candidate Starts for Quallification_9:

(Start: 15 @2491 has 2 MA's), (Start: 18 @2464 has 56 MA's), (Start: 19 @2455 has 23 MA's), (22, 2338), (23, 2326), (27, 2305), (32, 2236), (34, 2194), (35, 2191),

Gene: QueenPie_90 Start: 69267, Stop: 68863, Start Num: 11

Candidate Starts for QueenPie_90:

(6, 69324), (Start: 11 @69267 has 5 MA's), (13, 69228), (16, 69201), (30, 68985), (31, 68976), (34, 68931), (36, 68922),

Gene: Rakim_9 Start: 2464, Stop: 2156, Start Num: 18

Candidate Starts for Rakim_9:

(Start: 15 @2491 has 2 MA's), (Start: 18 @2464 has 56 MA's), (Start: 19 @2455 has 23 MA's), (22, 2338), (23, 2326), (27, 2305), (32, 2236), (34, 2194), (35, 2191),

Gene: Rimmer_7 Start: 1927, Stop: 1604, Start Num: 17

Candidate Starts for Rimmer_7:

(Start: 17 @1927 has 31 MA's), (Start: 19 @1915 has 23 MA's), (23, 1786), (24, 1780), (27, 1765), (34, 1654), (35, 1651),

Gene: RiverMonster_7 Start: 2229, Stop: 1921, Start Num: 18

Candidate Starts for RiverMonster_7:

(Start: 15 @2256 has 2 MA's), (Start: 18 @2229 has 56 MA's), (Start: 19 @2220 has 23 MA's), (22, 2103), (23, 2091), (27, 2070), (32, 2001), (34, 1959), (35, 1956),

Gene: Saints25_8 Start: 2429, Stop: 2121, Start Num: 18

Candidate Starts for Saints25_8:

(Start: 15 @2456 has 2 MA's), (Start: 18 @2429 has 56 MA's), (Start: 19 @2420 has 23 MA's), (22, 2303), (23, 2291), (27, 2270), (32, 2201), (34, 2159), (35, 2156),

Gene: Sassay_7 Start: 1859, Stop: 1551, Start Num: 18

Candidate Starts for Sassay_7:

(Start: 15 @1886 has 2 MA's), (Start: 18 @1859 has 56 MA's), (Start: 19 @1850 has 23 MA's), (22, 1733), (23, 1721), (27, 1700), (32, 1631), (34, 1589), (35, 1586),

Gene: ShamWow_8 Start: 2267, Stop: 1956, Start Num: 17

Candidate Starts for ShamWow_8:

(Start: 17 @2267 has 31 MA's), (Start: 19 @2255 has 23 MA's), (23, 2126), (24, 2120), (27, 2105), (34, 1994), (35, 1991),

Gene: ShereKhan_9 Start: 2455, Stop: 2156, Start Num: 19

Candidate Starts for ShereKhan_9:

(Start: 15 @2491 has 2 MA's), (Start: 18 @2464 has 56 MA's), (Start: 19 @2455 has 23 MA's), (22, 2338), (23, 2326), (27, 2305), (32, 2236), (34, 2194), (35, 2191),

Gene: Simpliphy_8 Start: 2420, Stop: 2112, Start Num: 18

Candidate Starts for Simpliphy_8:

(Start: 15 @2447 has 2 MA's), (Start: 18 @2420 has 56 MA's), (Start: 19 @2411 has 23 MA's), (22, 2294), (23, 2282), (27, 2261), (32, 2192), (34, 2150), (35, 2147),

Gene: SirDuracell_7 Start: 1927, Stop: 1604, Start Num: 17

Candidate Starts for SirDuracell_7:

(Start: 17 @1927 has 31 MA's), (Start: 19 @1915 has 23 MA's), (23, 1786), (24, 1780), (27, 1765), (34, 1654), (35, 1651),

Gene: SophKB_8 Start: 2267, Stop: 1956, Start Num: 17

Candidate Starts for SophKB_8:

(Start: 17 @2267 has 31 MA's), (Start: 19 @2255 has 23 MA's), (23, 2126), (24, 2120), (27, 2105), (34, 1994), (35, 1991),

Gene: Stank_9 Start: 2455, Stop: 2156, Start Num: 19

Candidate Starts for Stank_9:

(Start: 15 @2491 has 2 MA's), (Start: 18 @2464 has 56 MA's), (Start: 19 @2455 has 23 MA's), (22, 2338), (23, 2326), (27, 2305), (32, 2236), (34, 2194), (35, 2191),

Gene: Stark_8 Start: 2232, Stop: 1924, Start Num: 18

Candidate Starts for Stark_8:

(Start: 15 @2259 has 2 MA's), (Start: 18 @2232 has 56 MA's), (Start: 19 @2223 has 23 MA's), (22, 2106), (23, 2094), (27, 2073), (32, 2004), (34, 1962), (35, 1959),

Gene: StellaBean_8 Start: 2267, Stop: 1956, Start Num: 17

Candidate Starts for StellaBean_8:

(Start: 17 @2267 has 31 MA's), (Start: 19 @2255 has 23 MA's), (23, 2126), (24, 2120), (27, 2105), (34, 1994), (35, 1991),

Gene: Stinger_94 Start: 68586, Stop: 68254, Start Num: 11

Candidate Starts for Stinger_94:

(6, 68643), (Start: 11 @68586 has 5 MA's), (23, 68442), (30, 68376), (31, 68367), (34, 68322), (36, 68313),

Gene: StolenFromERC_9 Start: 2455, Stop: 2156, Start Num: 19

Candidate Starts for StolenFromERC_9:

(Start: 15 @2491 has 2 MA's), (Start: 18 @2464 has 56 MA's), (Start: 19 @2455 has 23 MA's), (22, 2338), (23, 2326), (27, 2305), (32, 2236), (34, 2194), (35, 2191),

Gene: Tarkin_9 Start: 2467, Stop: 2159, Start Num: 18

Candidate Starts for Tarkin_9:

(Start: 15 @2494 has 2 MA's), (Start: 18 @2467 has 56 MA's), (Start: 19 @2458 has 23 MA's), (22, 2341), (23, 2329), (27, 2308), (32, 2239), (34, 2197), (35, 2194),

Gene: TeardropMSU_7 Start: 2267, Stop: 1956, Start Num: 17

Candidate Starts for TeardropMSU_7:

(Start: 17 @2267 has 31 MA's), (Start: 19 @2255 has 23 MA's), (23, 2126), (24, 2120), (27, 2105), (34, 1994), (35, 1991),

Gene: Teaspoon_7 Start: 1955, Stop: 1644, Start Num: 19

Candidate Starts for Teaspoon_7:

(Start: 17 @1967 has 31 MA's), (Start: 19 @1955 has 23 MA's), (23, 1826), (24, 1820), (27, 1805), (34, 1694), (35, 1691),

Gene: Terminus_7 Start: 1850, Stop: 1551, Start Num: 19

Candidate Starts for Terminus_7:

(Start: 15 @1886 has 2 MA's), (Start: 18 @1859 has 56 MA's), (Start: 19 @1850 has 23 MA's), (22, 1733), (23, 1721), (27, 1700), (32, 1631), (34, 1589), (35, 1586),

Gene: Thresher_8 Start: 2229, Stop: 1921, Start Num: 18

Candidate Starts for Thresher_8:

(Start: 15 @2256 has 2 MA's), (Start: 18 @2229 has 56 MA's), (Start: 19 @2220 has 23 MA's), (22, 2103), (23, 2091), (27, 2070), (32, 2001), (34, 1959), (35, 1956),

Gene: Tomaszewski_7 Start: 1850, Stop: 1551, Start Num: 19

Candidate Starts for Tomaszewski_7:

(Start: 15 @1886 has 2 MA's), (Start: 18 @1859 has 56 MA's), (Start: 19 @1850 has 23 MA's), (22, 1733), (23, 1721), (27, 1700), (32, 1631), (34, 1589), (35, 1586),

Gene: Toto_8 Start: 2267, Stop: 1956, Start Num: 17

Candidate Starts for Toto_8:

(Start: 17 @2267 has 31 MA's), (Start: 19 @2255 has 23 MA's), (23, 2126), (24, 2120), (27, 2105), (34, 1994), (35, 1991),

Gene: Traaww1_6 Start: 1913, Stop: 1590, Start Num: 17

Candidate Starts for Traaww1_6:

(Start: 17 @1913 has 31 MA's), (Start: 19 @1901 has 23 MA's), (23, 1772), (24, 1766), (27, 1751), (34, 1640), (35, 1637),

Gene: Tuco_8 Start: 2255, Stop: 1956, Start Num: 19

Candidate Starts for Tuco_8:

(Start: 17 @2267 has 31 MA's), (Start: 19 @2255 has 23 MA's), (23, 2126), (24, 2120), (27, 2105), (34, 1994), (35, 1991),

Gene: Ukulele_7 Start: 2232, Stop: 1924, Start Num: 18

Candidate Starts for Ukulele_7:

(Start: 15 @2259 has 2 MA's), (Start: 18 @2232 has 56 MA's), (Start: 19 @2223 has 23 MA's), (22, 2106), (23, 2094), (27, 2073), (32, 2004), (34, 1962), (35, 1959),

Gene: Venti_71 Start: 43466, Stop: 43765, Start Num: 19

Candidate Starts for Venti_71:

(1, 43211), (Start: 19 @43466 has 23 MA's), (26, 43610), (28, 43637), (29, 43655), (33, 43721), (34, 43727), (36, 43736),

Gene: Wiggin_9 Start: 2464, Stop: 2156, Start Num: 18

Candidate Starts for Wiggin_9:

(Start: 15 @2491 has 2 MA's), (Start: 18 @2464 has 56 MA's), (Start: 19 @2455 has 23 MA's), (22, 2338), (23, 2326), (27, 2305), (32, 2236), (34, 2194), (35, 2191),

Gene: Willez_7 Start: 1859, Stop: 1551, Start Num: 18

Candidate Starts for Willez_7:

(Start: 15 @1886 has 2 MA's), (Start: 18 @1859 has 56 MA's), (Start: 19 @1850 has 23 MA's), (22, 1733), (23, 1721), (27, 1700), (32, 1631), (34, 1589), (35, 1586),

Gene: Xandras_9 Start: 2464, Stop: 2156, Start Num: 18

Candidate Starts for Xandras_9:

(Start: 15 @2491 has 2 MA's), (Start: 18 @2464 has 56 MA's), (Start: 19 @2455 has 23 MA's), (22, 2338), (23, 2326), (27, 2305), (32, 2236), (34, 2194), (35, 2191),

Gene: YassJohnny_8 Start: 2267, Stop: 1956, Start Num: 17

Candidate Starts for YassJohnny_8:

(Start: 17 @2267 has 31 MA's), (Start: 19 @2255 has 23 MA's), (23, 2126), (24, 2120), (27, 2105), (34, 1994), (35, 1991),

Gene: Youngblood_7 Start: 1856, Stop: 1548, Start Num: 18

Candidate Starts for Youngblood_7:

(Start: 18 @1856 has 56 MA's), (Start: 19 @1847 has 23 MA's), (22, 1730), (23, 1718), (27, 1697), (32, 1628), (34, 1586), (35, 1583),

Gene: xkcd_8 Start: 2011, Stop: 1703, Start Num: 18

Candidate Starts for xkcd_8:

(Start: 15 @2038 has 2 MA's), (Start: 18 @2011 has 56 MA's), (Start: 19 @2002 has 23 MA's), (22, 1885), (23, 1873), (27, 1852), (32, 1783), (34, 1741), (35, 1738),