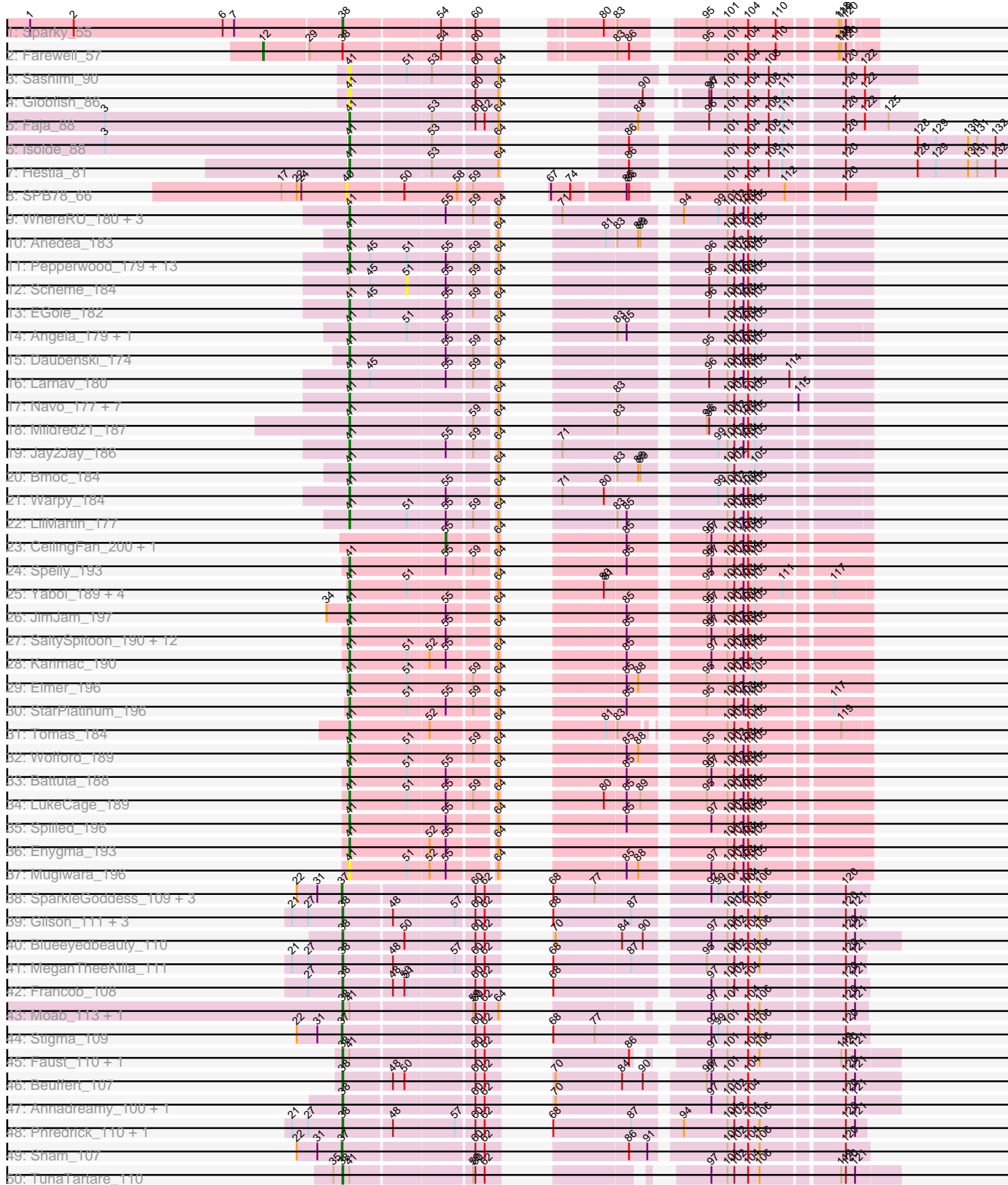
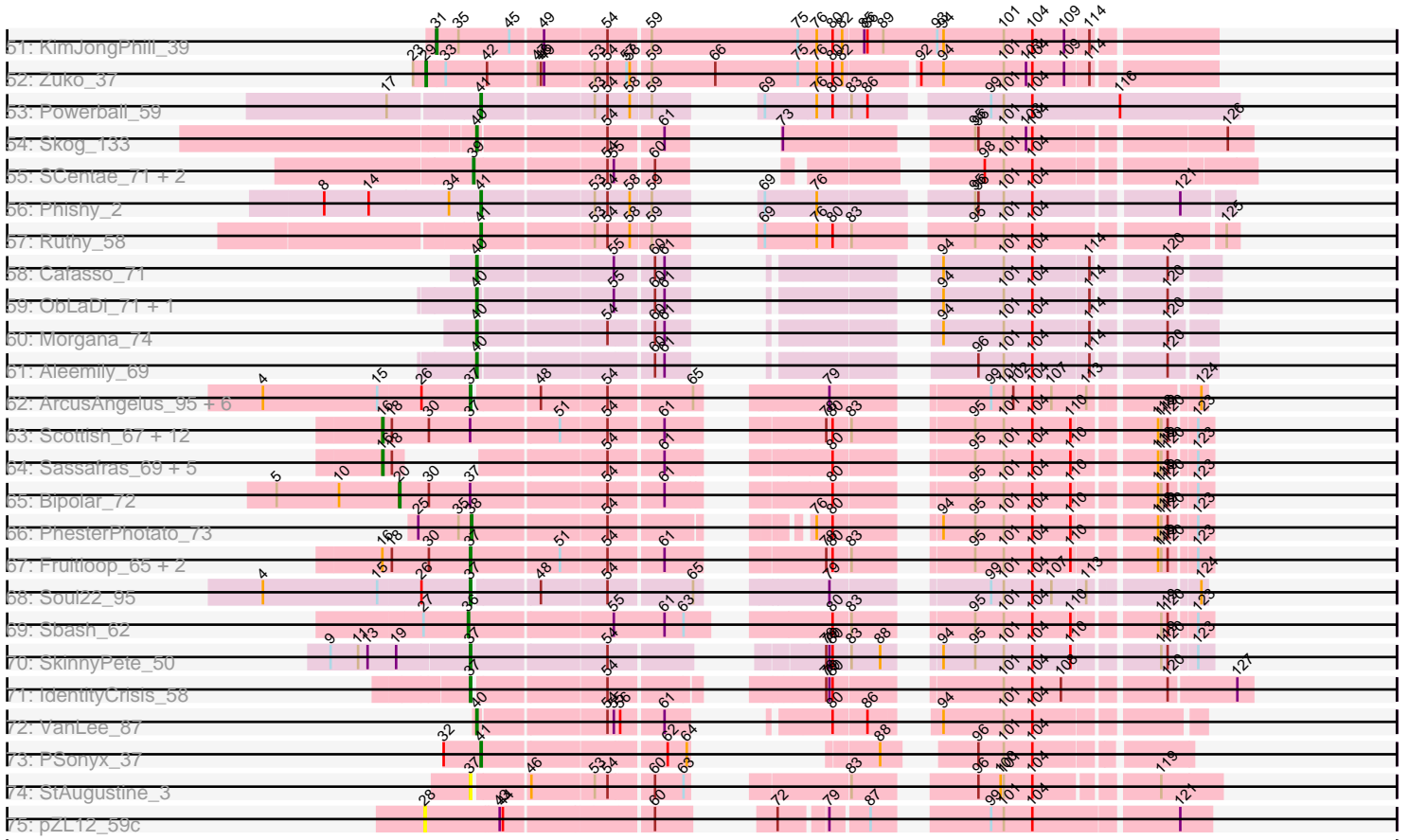


Pham 187938



Pham 187938



Note: Tracks are now grouped by subcluster and scaled. Switching in subcluster is indicated by changes in track color. Track scale is now set by default to display the region 30 bp upstream of start 1 to 30 bp downstream of the last possible start. If this default region is judged to be packed too tightly with annotated starts, the track will be further scaled to only show that region of the ORF with annotated starts. This action will be indicated by adding "Zoomed" to the title. For starts, yellow indicates the location of called starts comprised solely of Glimmer/GeneMark auto-annotations, green indicates the location of called starts with at least 1 manual gene annotation.

Pham 187938 Report

This analysis was run 11/02/24 on database version 579.

Pham number 187938 has 154 members, 12 are drafts.

Phages represented in each track:

- Track 1 : Sparky_55
- Track 2 : Farewell_57
- Track 3 : Sashimi_90
- Track 4 : Globfish_86
- Track 5 : Faja_88
- Track 6 : Isolde_88
- Track 7 : Hestia_81
- Track 8 : SPB78_66
- Track 9 : WhereRU_180, Evy_171, Targaryen_179, Persimmon_181
- Track 10 : Anedeia_183
- Track 11 : Pepperwood_179, Leo04_182, Cross_180, Cursive_179, Deutsch_179, Samisti12_182, BlueOtter_179, Watermoore_179, Tribute_178, Sushi23_181, Peebs_178, Lululemon_179, PacManQ_179, HangryHippo_179
- Track 12 : Scheme_184
- Track 13 : EGole_182
- Track 14 : Angela_179, MulchMansion_178
- Track 15 : Daubenski_174
- Track 16 : Larnav_180
- Track 17 : Navo_177, Braelyn_179, Bartholomune_179, Squillium_181, PinkiePie_178, NootNoot_177, Paradiddles_174, Liandry_179
- Track 18 : Mildred21_187
- Track 19 : Jay2Jay_186
- Track 20 : Bmoc_184
- Track 21 : Warpy_184
- Track 22 : LilMartin_177
- Track 23 : CeilingFan_200, TomSawyer_195
- Track 24 : Spelly_193
- Track 25 : Yaboi_189, Sollertia_186, Stanimal_185, BoomerJR_185, Genie2_185
- Track 26 : JimJam_197
- Track 27 : SaltySpittoon_190, Bordeaux_189, Amabiko_194, Jollison_187, Quaran19_190, KentuckyRacer_195, IchabodCrane_186, Birchlyn_189, MindFlayer_183, PumpkinSpice_192, Wipeout_182, Starbow_188, Gibbi_197
- Track 28 : Karimac_190
- Track 29 : Elmer_196
- Track 30 : StarPlatinum_196
- Track 31 : Tomas_184
- Track 32 : Wofford_189

- Track 33 : Battuta_188
- Track 34 : LukeCage_189
- Track 35 : Spilled_196
- Track 36 : Enygma_193
- Track 37 : Mugiwara_196
- Track 38 : SparkleGoddess_109, Belfort_111, Comrade_108, Karp_107
- Track 39 : Gilson_111, Emma1919_112, Jada_112, Forrest_116
- Track 40 : Blueeyedbeauty_110
- Track 41 : MeganTheeKilla_111
- Track 42 : Francob_108
- Track 43 : Moab_113, Patelgo_114
- Track 44 : Stigma_109
- Track 45 : Faust_110, SeresaTree_110
- Track 46 : Beuffert_107
- Track 47 : Annadreamy_100, Limpid_109
- Track 48 : Phredrick_110, Kenrey_114
- Track 49 : Sham_107
- Track 50 : TunaTartare_110
- Track 51 : KimJongPhill_39
- Track 52 : Zuko_37
- Track 53 : Powerball_59
- Track 54 : Skog_133
- Track 55 : SCentae_71, CherryTomatoes_73, Pupper_72
- Track 56 : Phishy_2
- Track 57 : Ruthy_58
- Track 58 : Cafasso_71
- Track 59 : ObLaDi_71, ModicumRichard_71
- Track 60 : Morgana_74
- Track 61 : Aleemily_69
- Track 62 : ArcusAngelus_95, Nitzel_88, Che8_101, Rita_95, MinionDave_93, OwlsT2W_93, Chevrolet_99
- Track 63 : Scottish_67, SiSi_68, JoeyJr_69, Nimbo_62, PHappiness_69, KingMidas_68, Leperchaun_66, Geralt_63, OldBen_66, Polka14_72, Empress_67, DaddyRickover_70, RitaG_69
- Track 64 : Sassafras_69, Doomphist_71, Poenanya_71, Inventum_66, RedBird_69, Dorothy_69
- Track 65 : Bipolar_72
- Track 66 : PhesterPhotato_73
- Track 67 : Fruitloop_65, Daenerys_68, Deb65_63
- Track 68 : Soul22_95
- Track 69 : Sbash_62
- Track 70 : SkinnyPete_50
- Track 71 : IdentityCrisis_58
- Track 72 : VanLee_87
- Track 73 : PSonyx_37
- Track 74 : StAugustine_3
- Track 75 : pZL12_59c

Summary of Final Annotations (See graph section above for start numbers):

The start number called the most often in the published annotations is 41, it was called in 72 of the 142 non-draft genes in the pham.

Genes that call this "Most Annotated" start:

- Amabiko_194, Anedea_183, Angela_179, Bartholomune_179, Battuta_188, Birchlyn_189, BlueOtter_179, Bmoc_184, BoomerJR_185, Bordeaux_189, Braelyn_179, Cross_180, Cursive_179, Daubenski_174, EGole_182, Elmer_196, Enygma_193, Evy_171, Faja_88, Genie2_185, Gibbi_197, Globfish_86, HangryHippo_179, Hestia_81, IchabodCrane_186, Isolde_88, Jay2Jay_186, JimJam_197, Jollison_187, Karimac_190, KentuckyRacer_195, Larnav_180, Leo04_182, Liandry_179, LilMartin_177, LukeCage_189, Lululemon_179, Mildred21_187, MindFlayer_183, Mugiwara_196, MulchMansion_178, Navo_177, NootNoot_177, PSonyx_37, PacManQ_179, Paradiddles_174, Peebs_178, Pepperwood_179, Persimmon_181, Phishy_2, PinkiePie_178, Powerball_59, PumpkinSpice_192, Quaran19_190, Ruthy_58, SaltySpittoon_190, Samisti12_182, Sashimi_90, Sollertia_186, Spelly_193, Spilled_196, Squillium_181, Stanimal_185, StarPlatinum_196, Starbow_188, Sushi23_181, Targaryen_179, Teutsch_179, Tomas_184, Tribute_178, Warpy_184, Watermoore_179, WhereRU_180, Wipeout_182, Wofford_189, Yaboi_189,

Genes that have the "Most Annotated" start but do not call it:

- Faust_110, Moab_113, Patelgo_114, Scheme_184, SeresaTree_110, TunaTartare_110,

Genes that do not have the "Most Annotated" start:

- Aleemily_69, Annadreamy_100, ArcusAngelus_95, Belfort_111, Beuffert_107, Bipolar_72, Blueeyedbeauty_110, Cafasso_71, CeilingFan_200, Che8_101, CherryTomatoes_73, Chevrolet_99, Comrade_108, DaddyRickover_70, Daenerys_68, Deb65_63, Doomphist_71, Dorothy_69, Emma1919_112, Empress_67, Farewell_57, Forrest_116, Francob_108, Fruitloop_65, Geralt_63, Gilson_111, IdentityCrisis_58, Inventum_66, Jada_112, JoeyJr_69, Karp_107, Kenrey_114, KimJongPhill_39, KingMidas_68, Leperchaun_66, Limpid_109, MeganTheeKilla_111, MinionDave_93, ModicumRichard_71, Morgana_74, Nimbo_62, Nitzel_88, ObLaDi_71, OldBen_66, OwlsT2W_93, PHappiness_69, PhesterPhotato_73, Phredrick_110, Poenanya_71, Polka14_72, Pupper_72, RedBird_69, RitaG_69, Rita_95, SCentae_71, SPB78_66, Sassafras_69, Sbash_62, Scottish_67, Sham_107, SiSi_68, SkinnyPete_50, Skog_133, Soul22_95, SparkleGoddess_109, Sparky_55, StAugustine_3, Stigma_109, TomSawyer_195, VanLee_87, Zuko_37, pZL12_59c,

Summary by start number:

Start 12:

- Found in 1 of 154 (0.6%) of genes in pham
- Manual Annotations of this start: 1 of 142
- Called 100.0% of time when present
- Phage (with cluster) where this start called: Farewell_57 (AF),

Start 16:

- Found in 22 of 154 (14.3%) of genes in pham
- Manual Annotations of this start: 18 of 142
- Called 86.4% of time when present

- Phage (with cluster) where this start called: DaddyRickover_70 (F1), Doomphist_71 (F1), Dorothy_69 (F1), Empress_67 (F1), Geralt_63 (F1), Inventum_66 (F1), JoeyJr_69 (F1), KingMidas_68 (F1), Leperchaun_66 (F1), Nimbo_62 (F1), OldBen_66 (F1), PHappiness_69 (F1), Poenanya_71 (F1), Polka14_72 (F1), RedBird_69 (F1), RitaG_69 (F1), Sassafras_69 (F1), Scottish_67 (F1), SiSi_68 (F1),

Start 20:

- Found in 1 of 154 (0.6%) of genes in pham
- Manual Annotations of this start: 1 of 142
- Called 100.0% of time when present
- Phage (with cluster) where this start called: Bipolar_72 (F1),

Start 28:

- Found in 1 of 154 (0.6%) of genes in pham
- No Manual Annotations of this start.
- Called 100.0% of time when present
- Phage (with cluster) where this start called: pZL12_59c (singleton),

Start 29:

- Found in 2 of 154 (1.3%) of genes in pham
- Manual Annotations of this start: 1 of 142
- Called 50.0% of time when present
- Phage (with cluster) where this start called: Zuko_37 (BR),

Start 31:

- Found in 7 of 154 (4.5%) of genes in pham
- Manual Annotations of this start: 1 of 142
- Called 14.3% of time when present
- Phage (with cluster) where this start called: KimJongPhill_39 (BR),

Start 36:

- Found in 1 of 154 (0.6%) of genes in pham
- Manual Annotations of this start: 1 of 142
- Called 100.0% of time when present
- Phage (with cluster) where this start called: Sbash_62 (I2),

Start 37:

- Found in 34 of 154 (22.1%) of genes in pham
- Manual Annotations of this start: 19 of 142
- Called 58.8% of time when present
- Phage (with cluster) where this start called: ArcusAngelus_95 (F1), Belfort_111 (BK1), Che8_101 (F1), Chevrolet_99 (F1), Comrade_108 (BK1), Daenerys_68 (F1), Deb65_63 (F1), Fruitloop_65 (F1), IdentityCrisis_58 (singleton), Karp_107 (BK1), MinionDave_93 (F1), Nitzel_88 (F1), OwlsT2W_93 (F1), Rita_95 (F1), Sham_107 (BK1), SkinnyPete_50 (N), Soul22_95 (F2), SparkleGoddess_109 (BK1), StAugustine_3 (singleton), Stigma_109 (BK1),

Start 38:

- Found in 20 of 154 (13.0%) of genes in pham
- Manual Annotations of this start: 18 of 142
- Called 95.0% of time when present
- Phage (with cluster) where this start called: Annadreamy_100 (BK1), Beuffert_107 (BK1), Blueeyedbeauty_110 (BK1), Emma1919_112 (BK1), Faust_110 (BK1),

Forrest_116 (BK1), Francob_108 (BK1), Gilson_111 (BK1), Jada_112 (BK1), Kenrey_114 (BK1), Limpid_109 (BK1), MeganTheeKilla_111 (BK1), Moab_113 (BK1), Patelgo_114 (BK1), PhesterPotato_73 (F1), Phredrick_110 (BK1), SeresaTree_110 (BK1), Sparky_55 (AF), TunaTartare_110 (BK1),

Start 39:

- Found in 3 of 154 (1.9%) of genes in pham
- Manual Annotations of this start: 3 of 142
- Called 100.0% of time when present
- Phage (with cluster) where this start called: CherryTomatoes_73 (DO), Pupper_72 (DO), SCentae_71 (DO),

Start 40:

- Found in 8 of 154 (5.2%) of genes in pham
- Manual Annotations of this start: 6 of 142
- Called 100.0% of time when present
- Phage (with cluster) where this start called: Aleemily_69 (DZ), Cafasso_71 (DZ), ModicumRichard_71 (DZ), Morgana_74 (DZ), ObLaDi_71 (DZ), SPB78_66 (BA), Skog_133 (DO), VanLee_87 (singleton),

Start 41:

- Found in 82 of 154 (53.2%) of genes in pham
- Manual Annotations of this start: 72 of 142
- Called 92.7% of time when present
- Phage (with cluster) where this start called: Amabiko_194 (BE2), Anedea_183 (BE1), Angela_179 (BE1), Bartholomune_179 (BE1), Battuta_188 (BE2), Birchlyn_189 (BE2), BlueOtter_179 (BE1), Bmoc_184 (BE1), BoomerJR_185 (BE2), Bordeaux_189 (BE2), Braelyn_179 (BE1), Cross_180 (BE1), Cursive_179 (BE1), Daubenski_174 (BE1), EGole_182 (BE1), Elmer_196 (BE2), Enygma_193 (BE2), Evy_171 (BE1), Faja_88 (AY), Genie2_185 (BE2), Gibbi_197 (BE2), Globfish_86 (AY), HangryHippo_179 (BE1), Hestia_81 (AY), IchabodCrane_186 (BE2), Isolde_88 (AY), Jay2Jay_186 (BE1), JimJam_197 (BE2), Jollison_187 (BE2), Karimac_190 (BE2), KentuckyRacer_195 (BE2), Larnav_180 (BE1), Leo04_182 (BE1), Liandry_179 (BE1), LilMartin_177 (BE1), LukeCage_189 (BE2), Lululemon_179 (BE1), Mildred21_187 (BE1), MindFlayer_183 (BE2), Mugiwara_196 (BE2), MulchMansion_178 (BE1), Navo_177 (BE1), NootNoot_177 (BE1), PSonyx_37 (singleton), PacManQ_179 (BE1), Paradiddles_174 (BE1), Peebs_178 (BE1), Pepperwood_179 (BE1), Persimmon_181 (BE1), Phishy_2 (DT), PinkiePie_178 (BE1), Powerball_59 (CZ4), PumpkinSpice_192 (BE2), Quarant19_190 (BE2), Ruthy_58 (DW), SaltySpittoon_190 (BE2), Samisti12_182 (BE1), Sashimi_90 (AY), Sollertia_186 (BE2), Spelly_193 (BE2), Spilled_196 (BE2), Squillium_181 (BE1), Stanimal_185 (BE2), StarPlatinum_196 (BE2), Starbow_188 (BE2), Sushi23_181 (BE1), Targaryen_179 (BE1), Teutsch_179 (BE1), Tomas_184 (BE2), Tribute_178 (BE1), Warpy_184 (BE1), Watermoore_179 (BE1), WhereRU_180 (BE1), Wipeout_182 (BE2), Wofford_189 (BE2), Yaboi_189 (BE2),

Start 51:

- Found in 48 of 154 (31.2%) of genes in pham
- No Manual Annotations of this start.
- Called 2.1% of time when present
- Phage (with cluster) where this start called: Scheme_184 (BE1),

Start 55:

- Found in 59 of 154 (38.3%) of genes in pham
- Manual Annotations of this start: 1 of 142
- Called 3.4% of time when present
- Phage (with cluster) where this start called: CeilingFan_200 (BE2), TomSawyer_195 (BE2),

Summary by clusters:

There are 17 clusters represented in this pham: DO, F1, singleton, BA, AF, I2, F2, CZ4, N, AY, DZ, BK1, BR, BE2, DW, DT, BE1,

Info for manual annotations of cluster AF:

- Start number 12 was manually annotated 1 time for cluster AF.
- Start number 38 was manually annotated 1 time for cluster AF.

Info for manual annotations of cluster AY:

- Start number 41 was manually annotated 3 times for cluster AY.

Info for manual annotations of cluster BE1:

- Start number 41 was manually annotated 37 times for cluster BE1.

Info for manual annotations of cluster BE2:

- Start number 41 was manually annotated 28 times for cluster BE2.
- Start number 55 was manually annotated 1 time for cluster BE2.

Info for manual annotations of cluster BK1:

- Start number 37 was manually annotated 6 times for cluster BK1.
- Start number 38 was manually annotated 16 times for cluster BK1.

Info for manual annotations of cluster BR:

- Start number 29 was manually annotated 1 time for cluster BR.
- Start number 31 was manually annotated 1 time for cluster BR.

Info for manual annotations of cluster CZ4:

- Start number 41 was manually annotated 1 time for cluster CZ4.

Info for manual annotations of cluster DO:

- Start number 39 was manually annotated 3 times for cluster DO.
- Start number 40 was manually annotated 1 time for cluster DO.

Info for manual annotations of cluster DT:

- Start number 41 was manually annotated 1 time for cluster DT.

Info for manual annotations of cluster DW:

- Start number 41 was manually annotated 1 time for cluster DW.

Info for manual annotations of cluster DZ:

- Start number 40 was manually annotated 4 times for cluster DZ.

Info for manual annotations of cluster F1:

- Start number 16 was manually annotated 18 times for cluster F1.
- Start number 20 was manually annotated 1 time for cluster F1.

- Start number 37 was manually annotated 10 times for cluster F1.
- Start number 38 was manually annotated 1 time for cluster F1.

Info for manual annotations of cluster F2:

- Start number 37 was manually annotated 1 time for cluster F2.

Info for manual annotations of cluster I2:

- Start number 36 was manually annotated 1 time for cluster I2.

Info for manual annotations of cluster N:

- Start number 37 was manually annotated 1 time for cluster N.

Gene Information:

Gene: Aleemily_69 Start: 45785, Stop: 46318, Start Num: 40

Candidate Starts for Aleemily_69:

(Start: 40 @45785 has 6 MA's), (60, 45932), (61, 45941), (96, 46115), (101, 46139), (104, 46166), (114, 46217), (120, 46277),

Gene: Amabiko_194 Start: 96749, Stop: 97306, Start Num: 41

Candidate Starts for Amabiko_194:

(Start: 41 @96749 has 72 MA's), (Start: 55 @96872 has 1 MA's), (64, 96926), (85, 97019), (95, 97106), (97, 97112), (101, 97133), (102, 97142), (103, 97154), (104, 97160), (105, 97169),

Gene: Anedea_183 Start: 95656, Stop: 96213, Start Num: 41

Candidate Starts for Anedea_183:

(Start: 41 @95656 has 72 MA's), (64, 95833), (81, 95902), (83, 95914), (88, 95941), (89, 95944), (101, 96040), (102, 96049), (104, 96067), (105, 96076),

Gene: Angela_179 Start: 95320, Stop: 95874, Start Num: 41

Candidate Starts for Angela_179:

(Start: 41 @95320 has 72 MA's), (51, 95395), (Start: 55 @95443 has 1 MA's), (64, 95497), (83, 95578), (85, 95590), (101, 95704), (102, 95713), (103, 95725), (104, 95731), (105, 95740),

Gene: Annadreamy_100 Start: 67632, Stop: 68237, Start Num: 38

Candidate Starts for Annadreamy_100:

(Start: 38 @67632 has 18 MA's), (60, 67788), (62, 67800), (70, 67824), (97, 68007), (101, 68028), (102, 68037), (104, 68055), (120, 68166), (121, 68178),

Gene: ArcusAngelus_95 Start: 53408, Stop: 53965, Start Num: 37

Candidate Starts for ArcusAngelus_95:

(4, 53216), (15, 53324), (26, 53363), (Start: 37 @53408 has 19 MA's), (48, 53462), (54, 53522), (65, 53594), (79, 53675), (99, 53789), (101, 53801), (102, 53810), (104, 53828), (107, 53846), (113, 53876), (124, 53960),

Gene: Bartholomune_179 Start: 95153, Stop: 95710, Start Num: 41

Candidate Starts for Bartholomune_179:

(Start: 41 @95153 has 72 MA's), (64, 95330), (83, 95411), (101, 95537), (102, 95546), (104, 95564), (105, 95573), (115, 95621),

Gene: Battuta_188 Start: 96065, Stop: 96622, Start Num: 41

Candidate Starts for Battuta_188:

(Start: 41 @96065 has 72 MA's), (51, 96140), (Start: 55 @96188 has 1 MA's), (64, 96242), (85, 96335), (95, 96422), (97, 96428), (101, 96449), (102, 96458), (103, 96470), (104, 96476), (105, 96485),

Gene: Belfort_111 Start: 73479, Stop: 74042, Start Num: 37

Candidate Starts for Belfort_111:

(22, 73422), (Start: 31 @73449 has 1 MA's), (Start: 37 @73479 has 19 MA's), (60, 73635), (62, 73647), (68, 73668), (77, 73722), (97, 73854), (99, 73863), (101, 73875), (103, 73896), (104, 73902), (106, 73917), (120, 74013),

Gene: Beuffert_107 Start: 72453, Stop: 73058, Start Num: 38

Candidate Starts for Beuffert_107:

(Start: 38 @72453 has 18 MA's), (48, 72513), (50, 72528), (60, 72609), (62, 72621), (70, 72645), (84, 72729), (90, 72756), (95, 72822), (97, 72828), (101, 72849), (104, 72876), (120, 72987), (121, 72999),

Gene: Bipolar_72 Start: 44668, Stop: 45300, Start Num: 20

Candidate Starts for Bipolar_72:

(5, 44554), (10, 44611), (Start: 20 @44668 has 1 MA's), (30, 44695), (Start: 37 @44734 has 19 MA's), (54, 44854), (61, 44899), (80, 45004), (95, 45100), (101, 45127), (104, 45154), (110, 45190), (118, 45256), (119, 45259), (120, 45265), (123, 45286),

Gene: Birchlyn_189 Start: 93997, Stop: 94554, Start Num: 41

Candidate Starts for Birchlyn_189:

(Start: 41 @93997 has 72 MA's), (Start: 55 @94120 has 1 MA's), (64, 94174), (85, 94267), (95, 94354), (97, 94360), (101, 94381), (102, 94390), (103, 94402), (104, 94408), (105, 94417),

Gene: BlueOtter_179 Start: 96373, Stop: 96930, Start Num: 41

Candidate Starts for BlueOtter_179:

(Start: 41 @96373 has 72 MA's), (45, 96400), (51, 96448), (Start: 55 @96496 has 1 MA's), (59, 96526), (64, 96550), (96, 96733), (101, 96757), (102, 96766), (103, 96778), (104, 96784), (105, 96793),

Gene: Blueeyedbeauty_110 Start: 71549, Stop: 72154, Start Num: 38

Candidate Starts for Blueeyedbeauty_110:

(Start: 38 @71549 has 18 MA's), (50, 71624), (60, 71705), (62, 71717), (70, 71741), (84, 71825), (90, 71852), (97, 71924), (101, 71945), (102, 71954), (104, 71972), (106, 71987), (120, 72083), (121, 72095),

Gene: Bmoc_184 Start: 96405, Stop: 96962, Start Num: 41

Candidate Starts for Bmoc_184:

(Start: 41 @96405 has 72 MA's), (64, 96582), (83, 96663), (88, 96690), (89, 96693), (101, 96789), (102, 96798), (105, 96825),

Gene: BoomerJR_185 Start: 96024, Stop: 96578, Start Num: 41

Candidate Starts for BoomerJR_185:

(Start: 41 @96024 has 72 MA's), (51, 96099), (64, 96201), (80, 96267), (81, 96270), (95, 96381), (101, 96408), (102, 96417), (103, 96429), (104, 96435), (105, 96444), (111, 96477), (117, 96531),

Gene: Bordeaux_189 Start: 96647, Stop: 97204, Start Num: 41

Candidate Starts for Bordeaux_189:

(Start: 41 @96647 has 72 MA's), (Start: 55 @96770 has 1 MA's), (64, 96824), (85, 96917), (95, 97004), (97, 97010), (101, 97031), (102, 97040), (103, 97052), (104, 97058), (105, 97067),

Gene: Braelyn_179 Start: 96152, Stop: 96709, Start Num: 41

Candidate Starts for Braelyn_179:

(Start: 41 @96152 has 72 MA's), (64, 96329), (83, 96410), (101, 96536), (102, 96545), (104, 96563), (105, 96572), (115, 96620),

Gene: Cafasso_71 Start: 46457, Stop: 46990, Start Num: 40

Candidate Starts for Cafasso_71:

(Start: 40 @46457 has 6 MA's), (Start: 55 @46574 has 1 MA's), (60, 46604), (61, 46613), (94, 46754), (101, 46811), (104, 46838), (114, 46889), (120, 46949),

Gene: CeilingFan_200 Start: 97396, Stop: 97830, Start Num: 55

Candidate Starts for CeilingFan_200:

(Start: 55 @97396 has 1 MA's), (64, 97450), (85, 97543), (95, 97630), (97, 97636), (101, 97657), (102, 97666), (103, 97678), (104, 97684), (105, 97693),

Gene: Che8_101 Start: 54031, Stop: 54588, Start Num: 37

Candidate Starts for Che8_101:

(4, 53839), (15, 53947), (26, 53986), (Start: 37 @54031 has 19 MA's), (48, 54085), (54, 54145), (65, 54217), (79, 54298), (99, 54412), (101, 54424), (102, 54433), (104, 54451), (107, 54469), (113, 54499), (124, 54583),

Gene: CherryTomatoes_73 Start: 25264, Stop: 25827, Start Num: 39

Candidate Starts for CherryTomatoes_73:

(Start: 39 @25264 has 3 MA's), (54, 25381), (Start: 55 @25387 has 1 MA's), (60, 25417), (98, 25594), (101, 25612), (104, 25639),

Gene: Chevrolet_99 Start: 53409, Stop: 53966, Start Num: 37

Candidate Starts for Chevrolet_99:

(4, 53217), (15, 53325), (26, 53364), (Start: 37 @53409 has 19 MA's), (48, 53463), (54, 53523), (65, 53595), (79, 53676), (99, 53790), (101, 53802), (102, 53811), (104, 53829), (107, 53847), (113, 53877), (124, 53961),

Gene: Comrade_108 Start: 72796, Stop: 73359, Start Num: 37

Candidate Starts for Comrade_108:

(22, 72739), (Start: 31 @72766 has 1 MA's), (Start: 37 @72796 has 19 MA's), (60, 72952), (62, 72964), (68, 72985), (77, 73039), (97, 73171), (99, 73180), (101, 73192), (103, 73213), (104, 73219), (106, 73234), (120, 73330),

Gene: Cross_180 Start: 97018, Stop: 97575, Start Num: 41

Candidate Starts for Cross_180:

(Start: 41 @97018 has 72 MA's), (45, 97045), (51, 97093), (Start: 55 @97141 has 1 MA's), (59, 97171), (64, 97195), (96, 97378), (101, 97402), (102, 97411), (103, 97423), (104, 97429), (105, 97438),

Gene: Cursive_179 Start: 95227, Stop: 95784, Start Num: 41

Candidate Starts for Cursive_179:

(Start: 41 @95227 has 72 MA's), (45, 95254), (51, 95302), (Start: 55 @95350 has 1 MA's), (59, 95380), (64, 95404), (96, 95587), (101, 95611), (102, 95620), (103, 95632), (104, 95638), (105, 95647),

Gene: DaddyRickover_70 Start: 44130, Stop: 44783, Start Num: 16

Candidate Starts for DaddyRickover_70:

(Start: 16 @44130 has 18 MA's), (18, 44139), (30, 44172), (Start: 37 @44211 has 19 MA's), (51, 44289), (54, 44331), (61, 44376), (78, 44481), (80, 44487), (83, 44502), (95, 44583), (101, 44610), (104, 44637), (110, 44673), (118, 44739), (119, 44742), (120, 44748), (123, 44769),

Gene: Daenerys_68 Start: 44330, Stop: 44902, Start Num: 37

Candidate Starts for Daenerys_68:

(Start: 16 @44249 has 18 MA's), (18, 44258), (30, 44291), (Start: 37 @44330 has 19 MA's), (51, 44408), (54, 44450), (61, 44495), (78, 44600), (80, 44606), (83, 44621), (95, 44702), (101, 44729), (104, 44756), (110, 44792), (118, 44858), (119, 44861), (120, 44867), (123, 44888),

Gene: Daubenski_174 Start: 96878, Stop: 97435, Start Num: 41

Candidate Starts for Daubenski_174:

(Start: 41 @96878 has 72 MA's), (Start: 55 @97001 has 1 MA's), (59, 97031), (64, 97055), (95, 97235), (101, 97262), (102, 97271), (103, 97283), (104, 97289), (105, 97298),

Gene: Deb65_63 Start: 42050, Stop: 42622, Start Num: 37

Candidate Starts for Deb65_63:

(Start: 16 @41969 has 18 MA's), (18, 41978), (30, 42011), (Start: 37 @42050 has 19 MA's), (51, 42128), (54, 42170), (61, 42215), (78, 42320), (80, 42326), (83, 42341), (95, 42422), (101, 42449), (104, 42476), (110, 42512), (118, 42578), (119, 42581), (120, 42587), (123, 42608),

Gene: Doomphist_71 Start: 44678, Stop: 45256, Start Num: 16

Candidate Starts for Doomphist_71:

(Start: 16 @44678 has 18 MA's), (18, 44687), (54, 44810), (61, 44855), (80, 44960), (95, 45056), (101, 45083), (104, 45110), (110, 45146), (118, 45212), (119, 45215), (120, 45221), (123, 45242),

Gene: Dorothy_69 Start: 43304, Stop: 43882, Start Num: 16

Candidate Starts for Dorothy_69:

(Start: 16 @43304 has 18 MA's), (18, 43313), (54, 43436), (61, 43481), (80, 43586), (95, 43682), (101, 43709), (104, 43736), (110, 43772), (118, 43838), (119, 43841), (120, 43847), (123, 43868),

Gene: EGole_182 Start: 98035, Stop: 98592, Start Num: 41

Candidate Starts for EGole_182:

(Start: 41 @98035 has 72 MA's), (45, 98062), (Start: 55 @98158 has 1 MA's), (59, 98188), (64, 98212), (96, 98395), (101, 98419), (102, 98428), (103, 98440), (104, 98446), (105, 98455),

Gene: Elmer_196 Start: 99545, Stop: 100102, Start Num: 41

Candidate Starts for Elmer_196:

(Start: 41 @99545 has 72 MA's), (51, 99620), (59, 99698), (64, 99722), (85, 99815), (88, 99830), (95, 99902), (101, 99929), (102, 99938), (103, 99950), (105, 99965),

Gene: Emma1919_112 Start: 72256, Stop: 72816, Start Num: 38

Candidate Starts for Emma1919_112:

(21, 72190), (27, 72211), (Start: 38 @72256 has 18 MA's), (48, 72316), (57, 72391), (60, 72412), (62, 72424), (68, 72445), (87, 72544), (101, 72652), (102, 72661), (104, 72679), (106, 72694), (120, 72790), (121, 72802),

Gene: Empress_67 Start: 43413, Stop: 44066, Start Num: 16

Candidate Starts for Empress_67:

(Start: 16 @43413 has 18 MA's), (18, 43422), (30, 43455), (Start: 37 @43494 has 19 MA's), (51, 43572), (54, 43614), (61, 43659), (78, 43764), (80, 43770), (83, 43785), (95, 43866), (101, 43893), (104, 43920), (110, 43956), (118, 44022), (119, 44025), (120, 44031), (123, 44052),

Gene: Enygma_193 Start: 98898, Stop: 99455, Start Num: 41

Candidate Starts for Enygma_193:

(Start: 41 @98898 has 72 MA's), (52, 99000), (Start: 55 @99021 has 1 MA's), (64, 99075), (101, 99282), (102, 99291), (103, 99303), (104, 99309), (105, 99318),

Gene: Evy_171 Start: 96433, Stop: 96990, Start Num: 41

Candidate Starts for Evy_171:

(Start: 41 @96433 has 72 MA's), (Start: 55 @96556 has 1 MA's), (59, 96586), (64, 96610), (71, 96625), (94, 96760), (99, 96805), (101, 96817), (102, 96826), (103, 96838), (104, 96844), (105, 96853),

Gene: Faja_88 Start: 49167, Stop: 49709, Start Num: 41

Candidate Starts for Faja_88:

(3, 48852), (Start: 41 @49167 has 72 MA's), (53, 49266), (60, 49314), (62, 49326), (64, 49344), (88, 49395), (96, 49458), (101, 49482), (104, 49509), (108, 49536), (111, 49551), (120, 49620), (122, 49644), (125, 49674),

Gene: Farewell_57 Start: 38417, Stop: 39061, Start Num: 12

Candidate Starts for Farewell_57:

(Start: 12 @38417 has 1 MA's), (Start: 29 @38474 has 1 MA's), (Start: 38 @38513 has 18 MA's), (54, 38633), (60, 38669), (83, 38780), (86, 38795), (95, 38861), (101, 38888), (104, 38915), (110, 38951), (118, 39017), (119, 39020), (120, 39026),

Gene: Faust_110 Start: 73136, Stop: 73705, Start Num: 38

Candidate Starts for Faust_110:

(Start: 38 @73136 has 18 MA's), (Start: 41 @73145 has 72 MA's), (60, 73292), (62, 73304), (86, 73421), (97, 73478), (101, 73499), (104, 73526), (106, 73541), (119, 73631), (120, 73637), (121, 73649),

Gene: Forrest_116 Start: 74569, Stop: 75129, Start Num: 38

Candidate Starts for Forrest_116:

(21, 74503), (27, 74524), (Start: 38 @74569 has 18 MA's), (48, 74629), (57, 74704), (60, 74725), (62, 74737), (68, 74758), (87, 74857), (101, 74965), (102, 74974), (104, 74992), (106, 75007), (120, 75103), (121, 75115),

Gene: Francob_108 Start: 72289, Stop: 72852, Start Num: 38

Candidate Starts for Francob_108:

(27, 72244), (Start: 38 @72289 has 18 MA's), (48, 72349), (50, 72364), (51, 72367), (60, 72445), (62, 72457), (68, 72478), (97, 72664), (101, 72685), (102, 72694), (104, 72712), (120, 72823), (121, 72835),

Gene: Fruitloop_65 Start: 43885, Stop: 44457, Start Num: 37

Candidate Starts for Fruitloop_65:

(Start: 16 @43804 has 18 MA's), (18, 43813), (30, 43846), (Start: 37 @43885 has 19 MA's), (51, 43963), (54, 44005), (61, 44050), (78, 44155), (80, 44161), (83, 44176), (95, 44257), (101, 44284), (104, 44311), (110, 44347), (118, 44413), (119, 44416), (120, 44422), (123, 44443),

Gene: Genie2_185 Start: 96138, Stop: 96692, Start Num: 41

Candidate Starts for Genie2_185:

(Start: 41 @96138 has 72 MA's), (51, 96213), (64, 96315), (80, 96381), (81, 96384), (95, 96495), (101, 96522), (102, 96531), (103, 96543), (104, 96549), (105, 96558), (111, 96591), (117, 96645),

Gene: Geralt_63 Start: 41968, Stop: 42621, Start Num: 16

Candidate Starts for Geralt_63:

(Start: 16 @41968 has 18 MA's), (18, 41977), (30, 42010), (Start: 37 @42049 has 19 MA's), (51, 42127), (54, 42169), (61, 42214), (78, 42319), (80, 42325), (83, 42340), (95, 42421), (101, 42448), (104, 42475), (110, 42511), (118, 42577), (119, 42580), (120, 42586), (123, 42607),

Gene: Gibbi_197 Start: 96935, Stop: 97492, Start Num: 41

Candidate Starts for Gibbi_197:

(Start: 41 @96935 has 72 MA's), (Start: 55 @97058 has 1 MA's), (64, 97112), (85, 97205), (95, 97292), (97, 97298), (101, 97319), (102, 97328), (103, 97340), (104, 97346), (105, 97355),

Gene: Gilson_111 Start: 72218, Stop: 72778, Start Num: 38

Candidate Starts for Gilson_111:

(21, 72152), (27, 72173), (Start: 38 @72218 has 18 MA's), (48, 72278), (57, 72353), (60, 72374), (62, 72386), (68, 72407), (87, 72506), (101, 72614), (102, 72623), (104, 72641), (106, 72656), (120, 72752), (121, 72764),

Gene: Globfish_86 Start: 47967, Stop: 48452, Start Num: 41

Candidate Starts for Globfish_86:

(Start: 41 @47967 has 72 MA's), (60, 48114), (64, 48144), (90, 48198), (96, 48249), (97, 48252), (101, 48273), (104, 48300), (108, 48327), (111, 48342), (120, 48411), (122, 48435),

Gene: HangryHippo_179 Start: 96373, Stop: 96930, Start Num: 41

Candidate Starts for HangryHippo_179:

(Start: 41 @96373 has 72 MA's), (45, 96400), (51, 96448), (Start: 55 @96496 has 1 MA's), (59, 96526), (64, 96550), (96, 96733), (101, 96757), (102, 96766), (103, 96778), (104, 96784), (105, 96793),

Gene: Hestia_81 Start: 46384, Stop: 47067, Start Num: 41

Candidate Starts for Hestia_81:

(Start: 41 @46384 has 72 MA's), (53, 46483), (64, 46561), (86, 46600), (101, 46714), (104, 46741), (108, 46768), (111, 46783), (120, 46852), (128, 46945), (129, 46969), (130, 47011), (131, 47023), (132, 47047),

Gene: IchabodCrane_186 Start: 96450, Stop: 97007, Start Num: 41

Candidate Starts for IchabodCrane_186:

(Start: 41 @96450 has 72 MA's), (Start: 55 @96573 has 1 MA's), (64, 96627), (85, 96720), (95, 96807), (97, 96813), (101, 96834), (102, 96843), (103, 96855), (104, 96861), (105, 96870),

Gene: IdentityCrisis_58 Start: 35961, Stop: 36560, Start Num: 37

Candidate Starts for IdentityCrisis_58:

(Start: 37 @35961 has 19 MA's), (54, 36075), (78, 36216), (79, 36219), (80, 36222), (101, 36345), (104, 36372), (108, 36399), (120, 36486), (127, 36546),

Gene: Inventum_66 Start: 43502, Stop: 44080, Start Num: 16

Candidate Starts for Inventum_66:

(Start: 16 @43502 has 18 MA's), (18, 43511), (54, 43634), (61, 43679), (80, 43784), (95, 43880), (101, 43907), (104, 43934), (110, 43970), (118, 44036), (119, 44039), (120, 44045), (123, 44066),

Gene: Isolde_88 Start: 49620, Stop: 50303, Start Num: 41

Candidate Starts for Isolde_88:

(3, 49305), (Start: 41 @49620 has 72 MA's), (53, 49719), (64, 49797), (86, 49836), (101, 49950), (104, 49977), (108, 50004), (111, 50019), (120, 50088), (128, 50181), (129, 50205), (130, 50247), (131, 50259), (132, 50283),

Gene: Jada_112 Start: 73499, Stop: 74059, Start Num: 38

Candidate Starts for Jada_112:

(21, 73433), (27, 73454), (Start: 38 @73499 has 18 MA's), (48, 73559), (57, 73634), (60, 73655), (62, 73667), (68, 73688), (87, 73787), (101, 73895), (102, 73904), (104, 73922), (106, 73937), (120, 74033), (121, 74045),

Gene: Jay2Jay_186 Start: 97179, Stop: 97733, Start Num: 41

Candidate Starts for Jay2Jay_186:

(Start: 41 @97179 has 72 MA's), (Start: 55 @97302 has 1 MA's), (59, 97332), (64, 97356), (71, 97371), (99, 97551), (101, 97563), (102, 97572), (103, 97584), (104, 97590), (105, 97599),

Gene: JimJam_197 Start: 98371, Stop: 98928, Start Num: 41

Candidate Starts for JimJam_197:

(34, 98341), (Start: 41 @98371 has 72 MA's), (Start: 55 @98494 has 1 MA's), (64, 98548), (85, 98641), (95, 98728), (97, 98734), (101, 98755), (102, 98764), (103, 98776), (104, 98782), (105, 98791),

Gene: JoeyJr_69 Start: 44417, Stop: 45070, Start Num: 16

Candidate Starts for JoeyJr_69:

(Start: 16 @44417 has 18 MA's), (18, 44426), (30, 44459), (Start: 37 @44498 has 19 MA's), (51, 44576), (54, 44618), (61, 44663), (78, 44768), (80, 44774), (83, 44789), (95, 44870), (101, 44897), (104, 44924), (110, 44960), (118, 45026), (119, 45029), (120, 45035), (123, 45056),

Gene: Jollison_187 Start: 96581, Stop: 97138, Start Num: 41

Candidate Starts for Jollison_187:

(Start: 41 @96581 has 72 MA's), (Start: 55 @96704 has 1 MA's), (64, 96758), (85, 96851), (95, 96938), (97, 96944), (101, 96965), (102, 96974), (103, 96986), (104, 96992), (105, 97001),

Gene: Karimac_190 Start: 96775, Stop: 97332, Start Num: 41

Candidate Starts for Karimac_190:

(Start: 41 @96775 has 72 MA's), (51, 96850), (52, 96877), (Start: 55 @96898 has 1 MA's), (64, 96952), (85, 97045), (97, 97138), (101, 97159), (102, 97168), (103, 97180), (104, 97186), (105, 97195),

Gene: Karp_107 Start: 72767, Stop: 73330, Start Num: 37

Candidate Starts for Karp_107:

(22, 72710), (Start: 31 @72737 has 1 MA's), (Start: 37 @72767 has 19 MA's), (60, 72923), (62, 72935), (68, 72956), (77, 73010), (97, 73142), (99, 73151), (101, 73163), (103, 73184), (104, 73190), (106, 73205), (120, 73301),

Gene: Kenrey_114 Start: 73258, Stop: 73818, Start Num: 38

Candidate Starts for Kenrey_114:

(21, 73192), (27, 73213), (Start: 38 @73258 has 18 MA's), (48, 73318), (57, 73393), (60, 73414), (62, 73426), (68, 73447), (87, 73546), (94, 73597), (101, 73654), (102, 73663), (104, 73681), (106, 73696), (120, 73792), (121, 73804),

Gene: KentuckyRacer_195 Start: 98117, Stop: 98674, Start Num: 41

Candidate Starts for KentuckyRacer_195:

(Start: 41 @98117 has 72 MA's), (Start: 55 @98240 has 1 MA's), (64, 98294), (85, 98387), (95, 98474), (97, 98480), (101, 98501), (102, 98510), (103, 98522), (104, 98528), (105, 98537),

Gene: KimJongPhill_39 Start: 34284, Stop: 33583, Start Num: 31

Candidate Starts for KimJongPhill_39:

(Start: 31 @34284 has 1 MA's), (35, 34263), (45, 34215), (49, 34188), (54, 34131), (59, 34098), (75, 33960), (76, 33942), (80, 33927), (82, 33918), (85, 33900), (86, 33897), (89, 33882), (93, 33831), (94, 33825), (101, 33768), (104, 33741), (109, 33711), (114, 33690),

Gene: KingMidas_68 Start: 43829, Stop: 44482, Start Num: 16

Candidate Starts for KingMidas_68:

(Start: 16 @43829 has 18 MA's), (18, 43838), (30, 43871), (Start: 37 @43910 has 19 MA's), (51, 43988), (54, 44030), (61, 44075), (78, 44180), (80, 44186), (83, 44201), (95, 44282), (101, 44309), (104, 44336), (110, 44372), (118, 44438), (119, 44441), (120, 44447), (123, 44468),

Gene: Larnav_180 Start: 96992, Stop: 97549, Start Num: 41

Candidate Starts for Larnav_180:

(Start: 41 @96992 has 72 MA's), (45, 97019), (Start: 55 @97115 has 1 MA's), (59, 97145), (64, 97169), (96, 97352), (101, 97376), (102, 97385), (103, 97397), (104, 97403), (105, 97412), (114, 97454),

Gene: Leo04_182 Start: 97383, Stop: 97940, Start Num: 41

Candidate Starts for Leo04_182:

(Start: 41 @97383 has 72 MA's), (45, 97410), (51, 97458), (Start: 55 @97506 has 1 MA's), (59, 97536), (64, 97560), (96, 97743), (101, 97767), (102, 97776), (103, 97788), (104, 97794), (105, 97803),

Gene: Leperchaun_66 Start: 43647, Stop: 44300, Start Num: 16

Candidate Starts for Leperchaun_66:

(Start: 16 @43647 has 18 MA's), (18, 43656), (30, 43689), (Start: 37 @43728 has 19 MA's), (51, 43806), (54, 43848), (61, 43893), (78, 43998), (80, 44004), (83, 44019), (95, 44100), (101, 44127), (104, 44154), (110, 44190), (118, 44256), (119, 44259), (120, 44265), (123, 44286),

Gene: Liandry_179 Start: 95896, Stop: 96453, Start Num: 41

Candidate Starts for Liandry_179:

(Start: 41 @95896 has 72 MA's), (64, 96073), (83, 96154), (101, 96280), (102, 96289), (104, 96307), (105, 96316), (115, 96364),

Gene: LilMartin_177 Start: 94939, Stop: 95493, Start Num: 41

Candidate Starts for LilMartin_177:

(Start: 41 @94939 has 72 MA's), (51, 95014), (Start: 55 @95062 has 1 MA's), (59, 95092), (64, 95116), (83, 95197), (85, 95209), (101, 95323), (102, 95332), (103, 95344), (104, 95350), (105, 95359),

Gene: Limpid_109 Start: 72875, Stop: 73480, Start Num: 38

Candidate Starts for Limpid_109:

(Start: 38 @72875 has 18 MA's), (60, 73031), (62, 73043), (70, 73067), (97, 73250), (101, 73271), (102, 73280), (104, 73298), (120, 73409), (121, 73421),

Gene: LukeCage_189 Start: 97535, Stop: 98092, Start Num: 41

Candidate Starts for LukeCage_189:

(Start: 41 @97535 has 72 MA's), (51, 97610), (Start: 55 @97658 has 1 MA's), (59, 97688), (64, 97712), (80, 97778), (85, 97805), (89, 97823), (95, 97892), (101, 97919), (102, 97928), (103, 97940), (104, 97946), (105, 97955),

Gene: Lululemon_179 Start: 95754, Stop: 96311, Start Num: 41

Candidate Starts for Lululemon_179:

(Start: 41 @95754 has 72 MA's), (45, 95781), (51, 95829), (Start: 55 @95877 has 1 MA's), (59, 95907), (64, 95931), (96, 96114), (101, 96138), (102, 96147), (103, 96159), (104, 96165), (105, 96174),

Gene: MeganTheeKilla_111 Start: 72424, Stop: 72984, Start Num: 38

Candidate Starts for MeganTheeKilla_111:

(21, 72358), (27, 72379), (Start: 38 @72424 has 18 MA's), (48, 72484), (57, 72559), (60, 72580), (62, 72592), (68, 72613), (87, 72712), (95, 72793), (101, 72820), (102, 72829), (104, 72847), (106, 72862), (120, 72958), (121, 72970),

Gene: Mildred21_187 Start: 95214, Stop: 95771, Start Num: 41

Candidate Starts for Mildred21_187:

(Start: 41 @95214 has 72 MA's), (59, 95367), (64, 95391), (83, 95472), (95, 95571), (96, 95574), (101, 95598), (102, 95607), (103, 95619), (104, 95625), (105, 95634),

Gene: MindFlayer_183 Start: 95966, Stop: 96523, Start Num: 41

Candidate Starts for MindFlayer_183:

(Start: 41 @95966 has 72 MA's), (Start: 55 @96089 has 1 MA's), (64, 96143), (85, 96236), (95, 96323), (97, 96329), (101, 96350), (102, 96359), (103, 96371), (104, 96377), (105, 96386),

Gene: MinionDave_93 Start: 52864, Stop: 53421, Start Num: 37

Candidate Starts for MinionDave_93:

(4, 52672), (15, 52780), (26, 52819), (Start: 37 @52864 has 19 MA's), (48, 52918), (54, 52978), (65, 53050), (79, 53131), (99, 53245), (101, 53257), (102, 53266), (104, 53284), (107, 53302), (113, 53332), (124, 53416),

Gene: Moab_113 Start: 74949, Stop: 75476, Start Num: 38

Candidate Starts for Moab_113:

(Start: 38 @74949 has 18 MA's), (Start: 41 @74958 has 72 MA's), (59, 75102), (60, 75105), (62, 75117), (64, 75135), (97, 75291), (101, 75312), (104, 75339), (106, 75354), (120, 75450), (121, 75462),

Gene: ModicumRichard_71 Start: 46606, Stop: 47139, Start Num: 40

Candidate Starts for ModicumRichard_71:

(Start: 40 @46606 has 6 MA's), (Start: 55 @46723 has 1 MA's), (60, 46753), (61, 46762), (94, 46903), (101, 46960), (104, 46987), (114, 47038), (120, 47098),

Gene: Morgana_74 Start: 47769, Stop: 48302, Start Num: 40

Candidate Starts for Morgana_74:

(Start: 40 @47769 has 6 MA's), (54, 47880), (60, 47916), (61, 47925), (94, 48066), (101, 48123), (104, 48150), (114, 48201), (120, 48261),

Gene: Mugiwara_196 Start: 97750, Stop: 98307, Start Num: 41

Candidate Starts for Mugiwara_196:

(Start: 41 @97750 has 72 MA's), (51, 97825), (52, 97852), (Start: 55 @97873 has 1 MA's), (64, 97927), (85, 98020), (88, 98035), (97, 98113), (101, 98134), (102, 98143), (103, 98155), (104, 98161), (105, 98170),

Gene: MulchMansion_178 Start: 95582, Stop: 96136, Start Num: 41

Candidate Starts for MulchMansion_178:

(Start: 41 @95582 has 72 MA's), (51, 95657), (Start: 55 @95705 has 1 MA's), (64, 95759), (83, 95840), (85, 95852), (101, 95966), (102, 95975), (103, 95987), (104, 95993), (105, 96002),

Gene: Navo_177 Start: 95533, Stop: 96090, Start Num: 41

Candidate Starts for Navo_177:

(Start: 41 @95533 has 72 MA's), (64, 95710), (83, 95791), (101, 95917), (102, 95926), (104, 95944), (105, 95953), (115, 96001),

Gene: Nimbo_62 Start: 41971, Stop: 42624, Start Num: 16

Candidate Starts for Nimbo_62:

(Start: 16 @41971 has 18 MA's), (18, 41980), (30, 42013), (Start: 37 @42052 has 19 MA's), (51, 42130), (54, 42172), (61, 42217), (78, 42322), (80, 42328), (83, 42343), (95, 42424), (101, 42451), (104, 42478), (110, 42514), (118, 42580), (119, 42583), (120, 42589), (123, 42610),

Gene: Nitzel_88 Start: 49520, Stop: 50077, Start Num: 37

Candidate Starts for Nitzel_88:

(4, 49328), (15, 49436), (26, 49475), (Start: 37 @49520 has 19 MA's), (48, 49574), (54, 49634), (65, 49706), (79, 49787), (99, 49901), (101, 49913), (102, 49922), (104, 49940), (107, 49958), (113, 49988), (124, 50072),

Gene: NootNoot_177 Start: 94903, Stop: 95460, Start Num: 41

Candidate Starts for NootNoot_177:

(Start: 41 @94903 has 72 MA's), (64, 95080), (83, 95161), (101, 95287), (102, 95296), (104, 95314), (105, 95323), (115, 95371),

Gene: ObLaDi_71 Start: 46578, Stop: 47111, Start Num: 40

Candidate Starts for ObLaDi_71:

(Start: 40 @46578 has 6 MA's), (Start: 55 @46695 has 1 MA's), (60, 46725), (61, 46734), (94, 46875), (101, 46932), (104, 46959), (114, 47010), (120, 47070),

Gene: OldBen_66 Start: 43364, Stop: 44017, Start Num: 16

Candidate Starts for OldBen_66:

(Start: 16 @43364 has 18 MA's), (18, 43373), (30, 43406), (Start: 37 @43445 has 19 MA's), (51, 43523), (54, 43565), (61, 43610), (78, 43715), (80, 43721), (83, 43736), (95, 43817), (101, 43844), (104, 43871), (110, 43907), (118, 43973), (119, 43976), (120, 43982), (123, 44003),

Gene: OwlsT2W_93 Start: 51404, Stop: 51961, Start Num: 37

Candidate Starts for OwlsT2W_93:

(4, 51212), (15, 51320), (26, 51359), (Start: 37 @51404 has 19 MA's), (48, 51458), (54, 51518), (65, 51590), (79, 51671), (99, 51785), (101, 51797), (102, 51806), (104, 51824), (107, 51842), (113, 51872), (124, 51956),

Gene: PHappiness_69 Start: 44193, Stop: 44846, Start Num: 16

Candidate Starts for PHappiness_69:

(Start: 16 @44193 has 18 MA's), (18, 44202), (30, 44235), (Start: 37 @44274 has 19 MA's), (51, 44352), (54, 44394), (61, 44439), (78, 44544), (80, 44550), (83, 44565), (95, 44646), (101, 44673), (104, 44700), (110, 44736), (118, 44802), (119, 44805), (120, 44811), (123, 44832),

Gene: PSonyx_37 Start: 31434, Stop: 30970, Start Num: 41

Candidate Starts for PSonyx_37:

(32, 31467), (Start: 41 @31434 has 72 MA's), (62, 31275), (64, 31257), (88, 31209), (96, 31152), (101, 31128), (104, 31101),

Gene: PacManQ_179 Start: 95754, Stop: 96311, Start Num: 41

Candidate Starts for PacManQ_179:

(Start: 41 @95754 has 72 MA's), (45, 95781), (51, 95829), (Start: 55 @95877 has 1 MA's), (59, 95907), (64, 95931), (96, 96114), (101, 96138), (102, 96147), (103, 96159), (104, 96165), (105, 96174),

Gene: Paradiddles_174 Start: 97716, Stop: 98273, Start Num: 41

Candidate Starts for Paradiddles_174:

(Start: 41 @97716 has 72 MA's), (64, 97893), (83, 97974), (101, 98100), (102, 98109), (104, 98127), (105, 98136), (115, 98184),

Gene: Patelgo_114 Start: 74809, Stop: 75336, Start Num: 38

Candidate Starts for Patelgo_114:

(Start: 38 @74809 has 18 MA's), (Start: 41 @74818 has 72 MA's), (59, 74962), (60, 74965), (62, 74977), (64, 74995), (97, 75151), (101, 75172), (104, 75199), (106, 75214), (120, 75310), (121, 75322),

Gene: Peebs_178 Start: 96695, Stop: 97252, Start Num: 41

Candidate Starts for Peebs_178:

(Start: 41 @96695 has 72 MA's), (45, 96722), (51, 96770), (Start: 55 @96818 has 1 MA's), (59, 96848), (64, 96872), (96, 97055), (101, 97079), (102, 97088), (103, 97100), (104, 97106), (105, 97115),

Gene: Pepperwood_179 Start: 96639, Stop: 97196, Start Num: 41

Candidate Starts for Pepperwood_179:

(Start: 41 @96639 has 72 MA's), (45, 96666), (51, 96714), (Start: 55 @96762 has 1 MA's), (59, 96792), (64, 96816), (96, 96999), (101, 97023), (102, 97032), (103, 97044), (104, 97050), (105, 97059),

Gene: Persimmon_181 Start: 95550, Stop: 96107, Start Num: 41

Candidate Starts for Persimmon_181:

(Start: 41 @95550 has 72 MA's), (Start: 55 @95673 has 1 MA's), (59, 95703), (64, 95727), (71, 95742), (94, 95877), (99, 95922), (101, 95934), (102, 95943), (103, 95955), (104, 95961), (105, 95970),

Gene: PhesterPhotato_73 Start: 45038, Stop: 45586, Start Num: 38

Candidate Starts for PhesterPhotato_73:

(25, 44990), (35, 45026), (Start: 38 @45038 has 18 MA's), (54, 45158), (76, 45275), (80, 45290), (94, 45356), (95, 45386), (101, 45413), (104, 45440), (110, 45476), (118, 45542), (119, 45545), (120, 45551), (123, 45572),

Gene: Phishy_2 Start: 216, Stop: 800, Start Num: 41

Candidate Starts for Phishy_2:

(8, 69), (14, 111), (34, 186), (Start: 41 @216 has 72 MA's), (53, 315), (54, 327), (58, 345), (59, 363), (69, 405), (76, 453), (95, 579), (96, 582), (101, 606), (104, 633), (121, 756),

Gene: Phredrick_110 Start: 71544, Stop: 72104, Start Num: 38

Candidate Starts for Phredrick_110:

(21, 71478), (27, 71499), (Start: 38 @71544 has 18 MA's), (48, 71604), (57, 71679), (60, 71700), (62, 71712), (68, 71733), (87, 71832), (94, 71883), (101, 71940), (102, 71949), (104, 71967), (106, 71982), (120, 72078), (121, 72090),

Gene: PinkiePie_178 Start: 95896, Stop: 96453, Start Num: 41

Candidate Starts for PinkiePie_178:

(Start: 41 @95896 has 72 MA's), (64, 96073), (83, 96154), (101, 96280), (102, 96289), (104, 96307), (105, 96316), (115, 96364),

Gene: Poenanya_71 Start: 44678, Stop: 45256, Start Num: 16

Candidate Starts for Poenanya_71:

(Start: 16 @44678 has 18 MA's), (18, 44687), (54, 44810), (61, 44855), (80, 44960), (95, 45056), (101, 45083), (104, 45110), (110, 45146), (118, 45212), (119, 45215), (120, 45221), (123, 45242),

Gene: Polka14_72 Start: 45394, Stop: 46047, Start Num: 16

Candidate Starts for Polka14_72:

(Start: 16 @45394 has 18 MA's), (18, 45403), (30, 45436), (Start: 37 @45475 has 19 MA's), (51, 45553), (54, 45595), (61, 45640), (78, 45745), (80, 45751), (83, 45766), (95, 45847), (101, 45874), (104, 45901), (110, 45937), (118, 46003), (119, 46006), (120, 46012), (123, 46033),

Gene: Powerball_59 Start: 40153, Stop: 40761, Start Num: 41

Candidate Starts for Powerball_59:

(17, 40072), (Start: 41 @40153 has 72 MA's), (53, 40252), (54, 40264), (58, 40282), (59, 40300), (69, 40342), (76, 40390), (80, 40405), (83, 40420), (86, 40435), (99, 40531), (101, 40543), (104, 40570), (116, 40651),

Gene: PumpkinSpice_192 Start: 97187, Stop: 97744, Start Num: 41

Candidate Starts for PumpkinSpice_192:

(Start: 41 @97187 has 72 MA's), (Start: 55 @97310 has 1 MA's), (64, 97364), (85, 97457), (95, 97544), (97, 97550), (101, 97571), (102, 97580), (103, 97592), (104, 97598), (105, 97607),

Gene: Pupper_72 Start: 25365, Stop: 25928, Start Num: 39

Candidate Starts for Pupper_72:

(Start: 39 @25365 has 3 MA's), (54, 25482), (Start: 55 @25488 has 1 MA's), (60, 25518), (98, 25695), (101, 25713), (104, 25740),

Gene: Quaran19_190 Start: 96628, Stop: 97185, Start Num: 41

Candidate Starts for Quaran19_190:

(Start: 41 @96628 has 72 MA's), (Start: 55 @96751 has 1 MA's), (64, 96805), (85, 96898), (95, 96985), (97, 96991), (101, 97012), (102, 97021), (103, 97033), (104, 97039), (105, 97048),

Gene: RedBird_69 Start: 43183, Stop: 43761, Start Num: 16

Candidate Starts for RedBird_69:

(Start: 16 @43183 has 18 MA's), (18, 43192), (54, 43315), (61, 43360), (80, 43465), (95, 43561), (101, 43588), (104, 43615), (110, 43651), (118, 43717), (119, 43720), (120, 43726), (123, 43747),

Gene: Rita_95 Start: 53949, Stop: 54506, Start Num: 37

Candidate Starts for Rita_95:

(4, 53757), (15, 53865), (26, 53904), (Start: 37 @53949 has 19 MA's), (48, 54003), (54, 54063), (65, 54135), (79, 54216), (99, 54330), (101, 54342), (102, 54351), (104, 54369), (107, 54387), (113, 54417), (124, 54501),

Gene: RitaG_69 Start: 44538, Stop: 45191, Start Num: 16

Candidate Starts for RitaG_69:

(Start: 16 @44538 has 18 MA's), (18, 44547), (30, 44580), (Start: 37 @44619 has 19 MA's), (51, 44697), (54, 44739), (61, 44784), (78, 44889), (80, 44895), (83, 44910), (95, 44991), (101, 45018), (104, 45045), (110, 45081), (118, 45147), (119, 45150), (120, 45156), (123, 45177),

Gene: Ruthy_58 Start: 42248, Stop: 42835, Start Num: 41

Candidate Starts for Ruthy_58:

(Start: 41 @42248 has 72 MA's), (53, 42347), (54, 42359), (58, 42377), (59, 42395), (69, 42437), (76, 42485), (80, 42500), (83, 42515), (95, 42611), (101, 42638), (104, 42665), (125, 42824),

Gene: SCentae_71 Start: 25119, Stop: 25682, Start Num: 39

Candidate Starts for SCentae_71:

(Start: 39 @25119 has 3 MA's), (54, 25236), (Start: 55 @25242 has 1 MA's), (60, 25272), (98, 25449), (101, 25467), (104, 25494),

Gene: SPB78_66 Start: 42811, Stop: 43368, Start Num: 40

Candidate Starts for SPB78_66:

(17, 42730), (22, 42748), (24, 42754), (Start: 40 @42811 has 6 MA's), (50, 42880), (58, 42946), (59, 42961), (67, 43003), (74, 43027), (85, 43093), (86, 43096), (101, 43189), (104, 43216), (112, 43264), (120, 43330),

Gene: SaltySpittoon_190 Start: 96170, Stop: 96727, Start Num: 41

Candidate Starts for SaltySpittoon_190:

(Start: 41 @96170 has 72 MA's), (Start: 55 @96293 has 1 MA's), (64, 96347), (85, 96440), (95, 96527), (97, 96533), (101, 96554), (102, 96563), (103, 96575), (104, 96581), (105, 96590),

Gene: Samisti12_182 Start: 98079, Stop: 98636, Start Num: 41

Candidate Starts for Samisti12_182:

(Start: 41 @98079 has 72 MA's), (45, 98106), (51, 98154), (Start: 55 @98202 has 1 MA's), (59, 98232), (64, 98256), (96, 98439), (101, 98463), (102, 98472), (103, 98484), (104, 98490), (105, 98499),

Gene: Sashimi_90 Start: 48886, Stop: 49443, Start Num: 41

Candidate Starts for Sashimi_90:

(Start: 41 @48886 has 72 MA's), (51, 48955), (53, 48985), (60, 49033), (64, 49063), (101, 49216), (104, 49243), (108, 49270), (120, 49354), (122, 49378),

Gene: Sassafras_69 Start: 43501, Stop: 44079, Start Num: 16

Candidate Starts for Sassafras_69:

(Start: 16 @43501 has 18 MA's), (18, 43510), (54, 43633), (61, 43678), (80, 43783), (95, 43879), (101, 43906), (104, 43933), (110, 43969), (118, 44035), (119, 44038), (120, 44044), (123, 44065),

Gene: Sbash_62 Start: 43188, Stop: 43778, Start Num: 36

Candidate Starts for Sbash_62:

(27, 43146), (Start: 36 @43188 has 1 MA's), (Start: 55 @43317 has 1 MA's), (61, 43362), (63, 43380), (80, 43482), (83, 43497), (95, 43578), (101, 43605), (104, 43632), (110, 43668), (119, 43737), (120, 43743), (123, 43764),

Gene: Scheme_184 Start: 98335, Stop: 98817, Start Num: 51

Candidate Starts for Scheme_184:

(Start: 41 @98260 has 72 MA's), (45, 98287), (51, 98335), (Start: 55 @98383 has 1 MA's), (59, 98413), (64, 98437), (96, 98620), (101, 98644), (102, 98653), (103, 98665), (104, 98671), (105, 98680),

Gene: Scottish_67 Start: 43084, Stop: 43737, Start Num: 16

Candidate Starts for Scottish_67:

(Start: 16 @43084 has 18 MA's), (18, 43093), (30, 43126), (Start: 37 @43165 has 19 MA's), (51, 43243), (54, 43285), (61, 43330), (78, 43435), (80, 43441), (83, 43456), (95, 43537), (101, 43564), (104, 43591), (110, 43627), (118, 43693), (119, 43696), (120, 43702), (123, 43723),

Gene: SeresaTree_110 Start: 72518, Stop: 73087, Start Num: 38

Candidate Starts for SeresaTree_110:

(Start: 38 @72518 has 18 MA's), (Start: 41 @72527 has 72 MA's), (60, 72674), (62, 72686), (86, 72803), (97, 72860), (101, 72881), (104, 72908), (106, 72923), (119, 73013), (120, 73019), (121, 73031),

Gene: Sham_107 Start: 72628, Stop: 73191, Start Num: 37

Candidate Starts for Sham_107:

(22, 72571), (Start: 31 @72598 has 1 MA's), (Start: 37 @72628 has 19 MA's), (60, 72784), (62, 72796), (86, 72913), (91, 72937), (101, 73024), (102, 73033), (104, 73051), (106, 73066), (120, 73162),

Gene: SiSi_68 Start: 44708, Stop: 45361, Start Num: 16

Candidate Starts for SiSi_68:

(Start: 16 @44708 has 18 MA's), (18, 44717), (30, 44750), (Start: 37 @44789 has 19 MA's), (51, 44867), (54, 44909), (61, 44954), (78, 45059), (80, 45065), (83, 45080), (95, 45161), (101, 45188), (104, 45215), (110, 45251), (118, 45317), (119, 45320), (120, 45326), (123, 45347),

Gene: SkinnyPete_50 Start: 33679, Stop: 34233, Start Num: 37

Candidate Starts for SkinnyPete_50:

(9, 33553), (11, 33577), (13, 33586), (19, 33613), (Start: 37 @33679 has 19 MA's), (54, 33799), (78, 33931), (79, 33934), (80, 33937), (83, 33952), (88, 33979), (94, 34003), (95, 34033), (101, 34060), (104, 34087), (110, 34123), (119, 34192), (120, 34198), (123, 34219),

Gene: Skog_133 Start: 54097, Stop: 54663, Start Num: 40

Candidate Starts for Skog_133:

(Start: 40 @54097 has 6 MA's), (54, 54208), (61, 54253), (73, 54277), (95, 54421), (96, 54424), (101, 54448), (103, 54469), (104, 54475), (126, 54640),

Gene: Sollertia_186 Start: 96138, Stop: 96692, Start Num: 41

Candidate Starts for Sollertia_186:

(Start: 41 @96138 has 72 MA's), (51, 96213), (64, 96315), (80, 96381), (81, 96384), (95, 96495), (101, 96522), (102, 96531), (103, 96543), (104, 96549), (105, 96558), (111, 96591), (117, 96645),

Gene: Soul22_95 Start: 50440, Stop: 50997, Start Num: 37

Candidate Starts for Soul22_95:

(4, 50248), (15, 50356), (26, 50395), (Start: 37 @50440 has 19 MA's), (48, 50494), (54, 50554), (65, 50626), (79, 50707), (99, 50821), (101, 50833), (104, 50860), (107, 50878), (113, 50908), (124, 50992),

Gene: SparkleGoddess_109 Start: 73096, Stop: 73659, Start Num: 37

Candidate Starts for SparkleGoddess_109:

(22, 73039), (Start: 31 @73066 has 1 MA's), (Start: 37 @73096 has 19 MA's), (60, 73252), (62, 73264), (68, 73285), (77, 73339), (97, 73471), (99, 73480), (101, 73492), (103, 73513), (104, 73519), (106, 73534), (120, 73630),

Gene: Sparky_55 Start: 38977, Stop: 39525, Start Num: 38

Candidate Starts for Sparky_55:

(1, 38575), (2, 38632), (6, 38827), (7, 38842), (Start: 38 @38977 has 18 MA's), (54, 39097), (60, 39133), (80, 39229), (83, 39244), (95, 39325), (101, 39352), (104, 39379), (110, 39415), (118, 39481), (119, 39484), (120, 39490),

Gene: Spelly_193 Start: 96099, Stop: 96656, Start Num: 41

Candidate Starts for Spelly_193:

(Start: 41 @96099 has 72 MA's), (Start: 55 @96222 has 1 MA's), (59, 96252), (64, 96276), (85, 96369), (95, 96456), (97, 96462), (101, 96483), (102, 96492), (103, 96504), (104, 96510), (105, 96519),

Gene: Spilled_196 Start: 97303, Stop: 97860, Start Num: 41

Candidate Starts for Spilled_196:

(Start: 41 @97303 has 72 MA's), (Start: 55 @97426 has 1 MA's), (64, 97480), (85, 97573), (97, 97666), (101, 97687), (102, 97696), (103, 97708), (104, 97714), (105, 97723),

Gene: Squillium_181 Start: 95898, Stop: 96455, Start Num: 41

Candidate Starts for Squillium_181:

(Start: 41 @95898 has 72 MA's), (64, 96075), (83, 96156), (101, 96282), (102, 96291), (104, 96309), (105, 96318), (115, 96366),

Gene: StAugustine_3 Start: 1052, Stop: 1621, Start Num: 37

Candidate Starts for StAugustine_3:

(Start: 37 @1052 has 19 MA's), (46, 1097), (53, 1154), (54, 1166), (60, 1202), (63, 1229), (83, 1325), (96, 1412), (100, 1433), (101, 1436), (104, 1463), (119, 1565),

Gene: Stanimal_185 Start: 96499, Stop: 97053, Start Num: 41

Candidate Starts for Stanimal_185:

(Start: 41 @96499 has 72 MA's), (51, 96574), (64, 96676), (80, 96742), (81, 96745), (95, 96856), (101, 96883), (102, 96892), (103, 96904), (104, 96910), (105, 96919), (111, 96952), (117, 97006),

Gene: StarPlatinum_196 Start: 98569, Stop: 99126, Start Num: 41

Candidate Starts for StarPlatinum_196:

(Start: 41 @98569 has 72 MA's), (51, 98644), (Start: 55 @98692 has 1 MA's), (59, 98722), (64, 98746), (85, 98839), (95, 98926), (101, 98953), (102, 98962), (103, 98974), (104, 98980), (105, 98989), (117, 99076),

Gene: Starbow_188 Start: 96143, Stop: 96700, Start Num: 41

Candidate Starts for Starbow_188:

(Start: 41 @96143 has 72 MA's), (Start: 55 @96266 has 1 MA's), (64, 96320), (85, 96413), (95, 96500), (97, 96506), (101, 96527), (102, 96536), (103, 96548), (104, 96554), (105, 96563),

Gene: Stigma_109 Start: 73104, Stop: 73667, Start Num: 37

Candidate Starts for Stigma_109:

(22, 73047), (Start: 31 @73074 has 1 MA's), (Start: 37 @73104 has 19 MA's), (60, 73260), (62, 73272), (68, 73293), (77, 73347), (97, 73479), (99, 73488), (101, 73500), (104, 73527), (106, 73542), (120, 73638),

Gene: Sushi23_181 Start: 97745, Stop: 98302, Start Num: 41

Candidate Starts for Sushi23_181:

(Start: 41 @97745 has 72 MA's), (45, 97772), (51, 97820), (Start: 55 @97868 has 1 MA's), (59, 97898), (64, 97922), (96, 98105), (101, 98129), (102, 98138), (103, 98150), (104, 98156), (105, 98165),

Gene: Targaryen_179 Start: 97642, Stop: 98199, Start Num: 41

Candidate Starts for Targaryen_179:

(Start: 41 @97642 has 72 MA's), (Start: 55 @97765 has 1 MA's), (59, 97795), (64, 97819), (71, 97834), (94, 97969), (99, 98014), (101, 98026), (102, 98035), (103, 98047), (104, 98053), (105,

98062),

Gene: Teutsch_179 Start: 97177, Stop: 97734, Start Num: 41

Candidate Starts for Teutsch_179:

(Start: 41 @97177 has 72 MA's), (45, 97204), (51, 97252), (Start: 55 @97300 has 1 MA's), (59, 97330), (64, 97354), (96, 97537), (101, 97561), (102, 97570), (103, 97582), (104, 97588), (105, 97597),

Gene: TomSawyer_195 Start: 98737, Stop: 99171, Start Num: 55

Candidate Starts for TomSawyer_195:

(Start: 55 @98737 has 1 MA's), (64, 98791), (85, 98884), (95, 98971), (97, 98977), (101, 98998), (102, 99007), (103, 99019), (104, 99025), (105, 99034),

Gene: Tomas_184 Start: 96480, Stop: 97016, Start Num: 41

Candidate Starts for Tomas_184:

(Start: 41 @96480 has 72 MA's), (52, 96582), (64, 96657), (81, 96726), (83, 96738), (101, 96846), (102, 96855), (104, 96873), (105, 96882), (119, 96978),

Gene: Tribute_178 Start: 97194, Stop: 97751, Start Num: 41

Candidate Starts for Tribute_178:

(Start: 41 @97194 has 72 MA's), (45, 97221), (51, 97269), (Start: 55 @97317 has 1 MA's), (59, 97347), (64, 97371), (96, 97554), (101, 97578), (102, 97587), (103, 97599), (104, 97605), (105, 97614),

Gene: TunaTartare_110 Start: 74387, Stop: 74956, Start Num: 38

Candidate Starts for TunaTartare_110:

(35, 74375), (Start: 38 @74387 has 18 MA's), (Start: 41 @74396 has 72 MA's), (59, 74540), (60, 74543), (62, 74555), (97, 74729), (101, 74750), (102, 74759), (104, 74777), (106, 74792), (119, 74882), (120, 74888), (121, 74900),

Gene: VanLee_87 Start: 48126, Stop: 48647, Start Num: 40

Candidate Starts for VanLee_87:

(Start: 40 @48126 has 6 MA's), (54, 48237), (Start: 55 @48243 has 1 MA's), (56, 48246), (61, 48282), (80, 48357), (86, 48387), (94, 48423), (101, 48480), (104, 48507),

Gene: Warpy_184 Start: 96658, Stop: 97212, Start Num: 41

Candidate Starts for Warpy_184:

(Start: 41 @96658 has 72 MA's), (Start: 55 @96781 has 1 MA's), (64, 96835), (71, 96850), (80, 96901), (99, 97030), (101, 97042), (102, 97051), (103, 97063), (104, 97069), (105, 97078),

Gene: Watermoore_179 Start: 97589, Stop: 98146, Start Num: 41

Candidate Starts for Watermoore_179:

(Start: 41 @97589 has 72 MA's), (45, 97616), (51, 97664), (Start: 55 @97712 has 1 MA's), (59, 97742), (64, 97766), (96, 97949), (101, 97973), (102, 97982), (103, 97994), (104, 98000), (105, 98009),

Gene: WhereRU_180 Start: 96302, Stop: 96859, Start Num: 41

Candidate Starts for WhereRU_180:

(Start: 41 @96302 has 72 MA's), (Start: 55 @96425 has 1 MA's), (59, 96455), (64, 96479), (71, 96494), (94, 96629), (99, 96674), (101, 96686), (102, 96695), (103, 96707), (104, 96713), (105, 96722),

Gene: Wipeout_182 Start: 97566, Stop: 98123, Start Num: 41

Candidate Starts for Wipeout_182:

(Start: 41 @97566 has 72 MA's), (Start: 55 @97689 has 1 MA's), (64, 97743), (85, 97836), (95, 97923), (97, 97929), (101, 97950), (102, 97959), (103, 97971), (104, 97977), (105, 97986),

Gene: Wofford_189 Start: 99505, Stop: 100062, Start Num: 41

Candidate Starts for Wofford_189:

(Start: 41 @99505 has 72 MA's), (51, 99580), (59, 99658), (64, 99682), (85, 99775), (88, 99790), (95, 99862), (101, 99889), (102, 99898), (103, 99910), (104, 99916), (105, 99925),

Gene: Yaboi_189 Start: 96073, Stop: 96627, Start Num: 41

Candidate Starts for Yaboi_189:

(Start: 41 @96073 has 72 MA's), (51, 96148), (64, 96250), (80, 96316), (81, 96319), (95, 96430), (101, 96457), (102, 96466), (103, 96478), (104, 96484), (105, 96493), (111, 96526), (117, 96580),

Gene: Zuko_37 Start: 32848, Stop: 32147, Start Num: 29

Candidate Starts for Zuko_37:

(23, 32860), (Start: 29 @32848 has 1 MA's), (33, 32830), (42, 32791), (47, 32749), (48, 32746), (49, 32743), (53, 32698), (54, 32686), (57, 32671), (58, 32668), (59, 32653), (66, 32593), (75, 32515), (76, 32497), (80, 32482), (82, 32473), (92, 32410), (94, 32389), (101, 32332), (103, 32311), (104, 32305), (109, 32275), (114, 32254),

Gene: pZL12_59c Start: 47859, Stop: 47257, Start Num: 28

Candidate Starts for pZL12_59c:

(28, 47859), (43, 47790), (44, 47787), (60, 47661), (72, 47607), (79, 47568), (87, 47535), (99, 47454), (101, 47442), (104, 47415), (121, 47286),