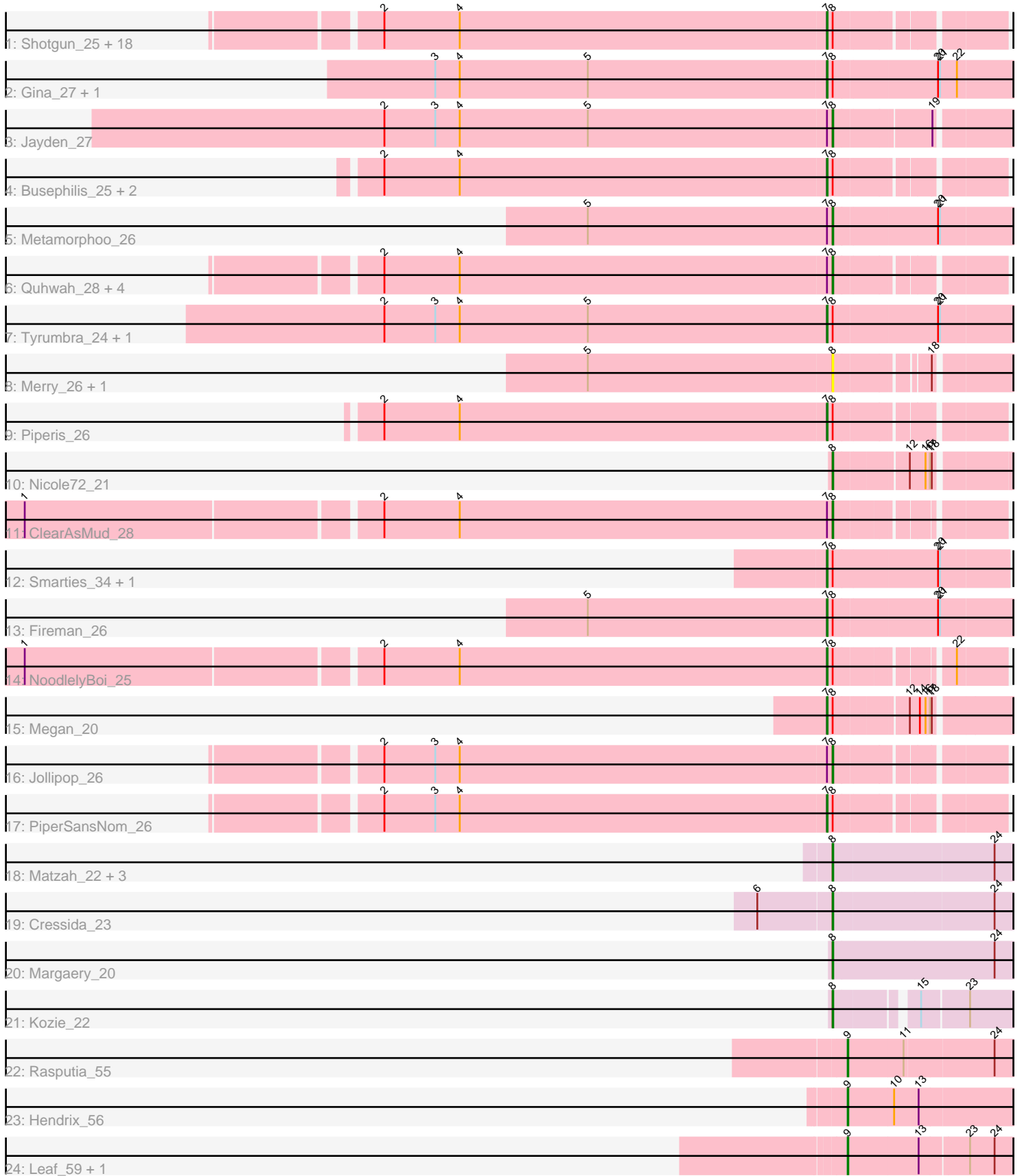


Pham 188176



Note: Tracks are now grouped by subcluster and scaled. Switching in subcluster is indicated by changes in track color. Track scale is now set by default to display the region 30 bp upstream of start 1 to 30 bp downstream of the last possible start. If this default region is judged to be packed too tightly with annotated starts, the track will be further scaled to only show that region of the ORF with annotated starts. This action will be indicated by adding "Zoomed" to the title. For starts, yellow indicates the location of called starts comprised solely of Glimmer/GeneMark auto-annotations, green indicates the location of called starts with at least 1 manual gene annotation.

Pham 188176 Report

This analysis was run 11/02/24 on database version 579.

Pham number 188176 has 56 members, 3 are drafts.

Phages represented in each track:

- Track 1 : Shotgun_25, Paschalis_25, Hermeonysus_25, LittleFortune_27, CrazyRich_25, Savannah_25, Jefe_26, BrazzalePHS_25, PierreOrion_26, Crisis_27, Onika_25, Yeti_26, Selwyn23_27, Cranjis_27, Honeyfin_27, Antares_26, Pulchra_27, Scumberland_27, Phrancesco_26
- Track 2 : Gina_27, Teamocil_27
- Track 3 : Jayden_27
- Track 4 : Busephilis_25, Ganandorf_25, Phorgeous_25
- Track 5 : Metamorphoo_26
- Track 6 : Quhwah_28, EarickHC_26, KaiHaiDragon_26, Ramiel05_25, Kowalski_25
- Track 7 : Tyumbra_24, RobsFeet_27
- Track 8 : Merry_26, Sunny_26
- Track 9 : Piperis_26
- Track 10 : Nicole72_21
- Track 11 : ClearAsMud_28
- Track 12 : Smarties_34, Ariadne_34
- Track 13 : Fireman_26
- Track 14 : NoodlelyBoi_25
- Track 15 : Megan_20
- Track 16 : Jollipop_26
- Track 17 : PiperSansNom_26
- Track 18 : Matzah_22, MementoMori_22, Terij_21, Cinna_21
- Track 19 : Cressida_23
- Track 20 : Margaery_20
- Track 21 : Kozie_22
- Track 22 : Rasputia_55
- Track 23 : Hendrix_56
- Track 24 : Leaf_59, Dewdrop_59

Summary of Final Annotations (See graph section above for start numbers):

The start number called the most often in the published annotations is 7, it was called in 32 of the 53 non-draft genes in the pham.

Genes that call this "Most Annotated" start:

- Antares_26, Ariadne_34, BrazzalePHS_25, Busephilis_25, Cranjjs_27, CrazyRich_25, Crisis_27, Fireman_26, Ganandorf_25, Gina_27, Hermeonysus_25, Honeyfin_27, Jefe_26, LittleFortune_27, Megan_20, NoodlelyBoi_25, Onika_25, Paschalis_25, Phorgeous_25, Phrancesco_26, PierreOrion_26, PiperSansNom_26, Piperis_26, Pulchra_27, RobsFeet_27, Savannah_25, Scumberland_27, Selwyn23_27, Shotgun_25, Smarties_34, Teamocil_27, Tyrumbra_24, Yeti_26,

Genes that have the "Most Annotated" start but do not call it:

- ClearAsMud_28, EarickHC_26, Jayden_27, Jollipop_26, KaiHaiDragon_26, Kowalski_25, Metamorphoo_26, Quhwah_28, Ramiel05_25,

Genes that do not have the "Most Annotated" start:

- Cinna_21, Cressida_23, Dewdrop_59, Hendrix_56, Kozie_22, Leaf_59, Margaery_20, Matzah_22, MementoMori_22, Merry_26, Nicole72_21, Rasputia_55, Sunny_26, Terij_21,

Summary by start number:

Start 7:

- Found in 42 of 56 (75.0%) of genes in pham
- Manual Annotations of this start: 32 of 53
- Called 78.6% of time when present
- Phage (with cluster) where this start called: Antares_26 (EC), Ariadne_34 (EC), BrazzalePHS_25 (EC), Busephilis_25 (EC), Cranjjs_27 (EC), CrazyRich_25 (EC), Crisis_27 (EC), Fireman_26 (EC), Ganandorf_25 (EC), Gina_27 (EC), Hermeonysus_25 (EC), Honeyfin_27 (EC), Jefe_26 (EC), LittleFortune_27 (EC), Megan_20 (EC), NoodlelyBoi_25 (EC), Onika_25 (EC), Paschalis_25 (EC), Phorgeous_25 (EC), Phrancesco_26 (EC), PierreOrion_26 (EC), PiperSansNom_26 (EC), Piperis_26 (EC), Pulchra_27 (EC), RobsFeet_27 (EC), Savannah_25 (EC), Scumberland_27 (EC), Selwyn23_27 (EC), Shotgun_25 (EC), Smarties_34 (EC), Teamocil_27 (EC), Tyrumbra_24 (EC), Yeti_26 (EC),

Start 8:

- Found in 52 of 56 (92.9%) of genes in pham
- Manual Annotations of this start: 17 of 53
- Called 36.5% of time when present
- Phage (with cluster) where this start called: Cinna_21 (EI), ClearAsMud_28 (EC), Cressida_23 (EI), EarickHC_26 (EC), Jayden_27 (EC), Jollipop_26 (EC), KaiHaiDragon_26 (EC), Kowalski_25 (EC), Kozie_22 (EI), Margaery_20 (EI), Matzah_22 (EI), MementoMori_22 (EI), Merry_26 (EC), Metamorphoo_26 (EC), Nicole72_21 (EC), Quhwah_28 (EC), Ramiel05_25 (EC), Sunny_26 (EC), Terij_21 (EI),

Start 9:

- Found in 4 of 56 (7.1%) of genes in pham
- Manual Annotations of this start: 4 of 53
- Called 100.0% of time when present
- Phage (with cluster) where this start called: Dewdrop_59 (GC), Hendrix_56 (GC), Leaf_59 (GC), Rasputia_55 (GC),

Summary by clusters:

There are 3 clusters represented in this pham: GC, EI, EC,

Info for manual annotations of cluster EC:

- Start number 7 was manually annotated 32 times for cluster EC.
- Start number 8 was manually annotated 10 times for cluster EC.

Info for manual annotations of cluster EI:

- Start number 8 was manually annotated 7 times for cluster EI.

Info for manual annotations of cluster GC:

- Start number 9 was manually annotated 4 times for cluster GC.

Gene Information:

Gene: Antares_26 Start: 13622, Stop: 13864, Start Num: 7

Candidate Starts for Antares_26:

(2, 12920), (4, 13040), (Start: 7 @13622 has 32 MA's), (Start: 8 @13628 has 17 MA's),

Gene: Ariadne_34 Start: 15114, Stop: 15389, Start Num: 7

Candidate Starts for Ariadne_34:

(Start: 7 @15114 has 32 MA's), (Start: 8 @15120 has 17 MA's), (20, 15279), (21, 15282),

Gene: BrazzalePHS_25 Start: 13415, Stop: 13657, Start Num: 7

Candidate Starts for BrazzalePHS_25:

(2, 12713), (4, 12833), (Start: 7 @13415 has 32 MA's), (Start: 8 @13421 has 17 MA's),

Gene: Busephilis_25 Start: 13353, Stop: 13595, Start Num: 7

Candidate Starts for Busephilis_25:

(2, 12651), (4, 12771), (Start: 7 @13353 has 32 MA's), (Start: 8 @13359 has 17 MA's),

Gene: Cinna_21 Start: 12839, Stop: 13123, Start Num: 8

Candidate Starts for Cinna_21:

(Start: 8 @12839 has 17 MA's), (24, 13088),

Gene: ClearAsMud_28 Start: 14156, Stop: 14386, Start Num: 8

Candidate Starts for ClearAsMud_28:

(1, 12902), (2, 13445), (4, 13565), (Start: 7 @14150 has 32 MA's), (Start: 8 @14156 has 17 MA's),

Gene: Cranjis_27 Start: 13577, Stop: 13819, Start Num: 7

Candidate Starts for Cranjis_27:

(2, 12875), (4, 12995), (Start: 7 @13577 has 32 MA's), (Start: 8 @13583 has 17 MA's),

Gene: CrazyRich_25 Start: 13387, Stop: 13629, Start Num: 7

Candidate Starts for CrazyRich_25:

(2, 12685), (4, 12805), (Start: 7 @13387 has 32 MA's), (Start: 8 @13393 has 17 MA's),

Gene: Cressida_23 Start: 12873, Stop: 13157, Start Num: 8

Candidate Starts for Cressida_23:

(6, 12762), (Start: 8 @12873 has 17 MA's), (24, 13122),

Gene: Crisis_27 Start: 13372, Stop: 13614, Start Num: 7

Candidate Starts for Crisis_27:

(2, 12670), (4, 12790), (Start: 7 @13372 has 32 MA's), (Start: 8 @13378 has 17 MA's),

Gene: Dewdrop_59 Start: 29132, Stop: 29386, Start Num: 9

Candidate Starts for Dewdrop_59:

(Start: 9 @29132 has 4 MA's), (13, 29243), (23, 29318), (24, 29357),

Gene: EarickHC_26 Start: 13304, Stop: 13540, Start Num: 8

Candidate Starts for EarickHC_26:

(2, 12596), (4, 12716), (Start: 7 @13298 has 32 MA's), (Start: 8 @13304 has 17 MA's),

Gene: Fireman_26 Start: 13019, Stop: 13297, Start Num: 7

Candidate Starts for Fireman_26:

(5, 12638), (Start: 7 @13019 has 32 MA's), (Start: 8 @13025 has 17 MA's), (20, 13181), (21, 13184),

Gene: Ganandorf_25 Start: 13434, Stop: 13676, Start Num: 7

Candidate Starts for Ganandorf_25:

(2, 12732), (4, 12852), (Start: 7 @13434 has 32 MA's), (Start: 8 @13440 has 17 MA's),

Gene: Gina_27 Start: 12706, Stop: 12984, Start Num: 7

Candidate Starts for Gina_27:

(3, 12085), (4, 12124), (5, 12328), (Start: 7 @12706 has 32 MA's), (Start: 8 @12712 has 17 MA's),
(20, 12868), (21, 12871), (22, 12898),

Gene: Hendrix_56 Start: 29152, Stop: 29406, Start Num: 9

Candidate Starts for Hendrix_56:

(Start: 9 @29152 has 4 MA's), (10, 29224), (13, 29260),

Gene: Hermeonysus_25 Start: 13304, Stop: 13546, Start Num: 7

Candidate Starts for Hermeonysus_25:

(2, 12602), (4, 12722), (Start: 7 @13304 has 32 MA's), (Start: 8 @13310 has 17 MA's),

Gene: Honeyfin_27 Start: 13619, Stop: 13861, Start Num: 7

Candidate Starts for Honeyfin_27:

(2, 12917), (4, 13037), (Start: 7 @13619 has 32 MA's), (Start: 8 @13625 has 17 MA's),

Gene: Jayden_27 Start: 13098, Stop: 13352, Start Num: 8

Candidate Starts for Jayden_27:

(2, 12390), (3, 12471), (4, 12510), (5, 12714), (Start: 7 @13092 has 32 MA's), (Start: 8 @13098 has
17 MA's), (19, 13239),

Gene: Jefe_26 Start: 13357, Stop: 13599, Start Num: 7

Candidate Starts for Jefe_26:

(2, 12655), (4, 12775), (Start: 7 @13357 has 32 MA's), (Start: 8 @13363 has 17 MA's),

Gene: Jollipop_26 Start: 13711, Stop: 13947, Start Num: 8

Candidate Starts for Jollipop_26:

(2, 13003), (3, 13084), (4, 13123), (Start: 7 @13705 has 32 MA's), (Start: 8 @13711 has 17 MA's),

Gene: KaiHaiDragon_26 Start: 13304, Stop: 13540, Start Num: 8

Candidate Starts for KaiHaiDragon_26:

(2, 12596), (4, 12716), (Start: 7 @13298 has 32 MA's), (Start: 8 @13304 has 17 MA's),

Gene: Kowalski_25 Start: 13420, Stop: 13656, Start Num: 8

Candidate Starts for Kowalski_25:
(2, 12712), (4, 12832), (Start: 7 @13414 has 32 MA's), (Start: 8 @13420 has 17 MA's),

Gene: Kozie_22 Start: 12878, Stop: 13129, Start Num: 8
Candidate Starts for Kozie_22:
(Start: 8 @12878 has 17 MA's), (15, 12989), (23, 13061),

Gene: Leaf_59 Start: 29132, Stop: 29386, Start Num: 9
Candidate Starts for Leaf_59:
(Start: 9 @29132 has 4 MA's), (13, 29243), (23, 29318), (24, 29357),

Gene: LittleFortune_27 Start: 13661, Stop: 13903, Start Num: 7
Candidate Starts for LittleFortune_27:
(2, 12959), (4, 13079), (Start: 7 @13661 has 32 MA's), (Start: 8 @13667 has 17 MA's),

Gene: Margaery_20 Start: 12616, Stop: 12906, Start Num: 8
Candidate Starts for Margaery_20:
(Start: 8 @12616 has 17 MA's), (24, 12871),

Gene: Matzah_22 Start: 12816, Stop: 13100, Start Num: 8
Candidate Starts for Matzah_22:
(Start: 8 @12816 has 17 MA's), (24, 13065),

Gene: Megan_20 Start: 14422, Stop: 14679, Start Num: 7
Candidate Starts for Megan_20:
(Start: 7 @14422 has 32 MA's), (Start: 8 @14431 has 17 MA's), (12, 14533), (14, 14548), (16, 14557),
(17, 14563), (18, 14566),

Gene: MementoMori_22 Start: 12532, Stop: 12816, Start Num: 8
Candidate Starts for MementoMori_22:
(Start: 8 @12532 has 17 MA's), (24, 12781),

Gene: Merry_26 Start: 13679, Stop: 13921, Start Num: 8
Candidate Starts for Merry_26:
(5, 13295), (Start: 8 @13679 has 17 MA's), (18, 13808),

Gene: Metamorphoo_26 Start: 13011, Stop: 13283, Start Num: 8
Candidate Starts for Metamorphoo_26:
(5, 12624), (Start: 7 @13005 has 32 MA's), (Start: 8 @13011 has 17 MA's), (20, 13167), (21, 13170),

Gene: Nicole72_21 Start: 14824, Stop: 15069, Start Num: 8
Candidate Starts for Nicole72_21:
(Start: 8 @14824 has 17 MA's), (12, 14926), (16, 14950), (17, 14956), (18, 14959),

Gene: NoodlelyBoi_25 Start: 13455, Stop: 13691, Start Num: 7
Candidate Starts for NoodlelyBoi_25:
(1, 12207), (2, 12750), (4, 12870), (Start: 7 @13455 has 32 MA's), (Start: 8 @13461 has 17 MA's),
(22, 13614),

Gene: Onika_25 Start: 13388, Stop: 13630, Start Num: 7
Candidate Starts for Onika_25:
(2, 12686), (4, 12806), (Start: 7 @13388 has 32 MA's), (Start: 8 @13394 has 17 MA's),

Gene: Paschalis_25 Start: 13403, Stop: 13645, Start Num: 7
Candidate Starts for Paschalis_25:
(2, 12701), (4, 12821), (Start: 7 @13403 has 32 MA's), (Start: 8 @13409 has 17 MA's),

Gene: Phorgeous_25 Start: 13255, Stop: 13497, Start Num: 7
Candidate Starts for Phorgeous_25:
(2, 12553), (4, 12673), (Start: 7 @13255 has 32 MA's), (Start: 8 @13261 has 17 MA's),

Gene: Phrancesco_26 Start: 13534, Stop: 13776, Start Num: 7
Candidate Starts for Phrancesco_26:
(2, 12832), (4, 12952), (Start: 7 @13534 has 32 MA's), (Start: 8 @13540 has 17 MA's),

Gene: PierreOrion_26 Start: 13558, Stop: 13800, Start Num: 7
Candidate Starts for PierreOrion_26:
(2, 12856), (4, 12976), (Start: 7 @13558 has 32 MA's), (Start: 8 @13564 has 17 MA's),

Gene: PiperSansNom_26 Start: 13710, Stop: 13952, Start Num: 7
Candidate Starts for PiperSansNom_26:
(2, 13008), (3, 13089), (4, 13128), (Start: 7 @13710 has 32 MA's), (Start: 8 @13716 has 17 MA's),

Gene: Piperis_26 Start: 13380, Stop: 13622, Start Num: 7
Candidate Starts for Piperis_26:
(2, 12678), (4, 12798), (Start: 7 @13380 has 32 MA's), (Start: 8 @13386 has 17 MA's),

Gene: Pulchra_27 Start: 13779, Stop: 14021, Start Num: 7
Candidate Starts for Pulchra_27:
(2, 13077), (4, 13197), (Start: 7 @13779 has 32 MA's), (Start: 8 @13785 has 17 MA's),

Gene: Quhwah_28 Start: 13776, Stop: 14012, Start Num: 8
Candidate Starts for Quhwah_28:
(2, 13068), (4, 13188), (Start: 7 @13770 has 32 MA's), (Start: 8 @13776 has 17 MA's),

Gene: Ramiel05_25 Start: 13420, Stop: 13656, Start Num: 8
Candidate Starts for Ramiel05_25:
(2, 12712), (4, 12832), (Start: 7 @13414 has 32 MA's), (Start: 8 @13420 has 17 MA's),

Gene: Rasputia_55 Start: 28838, Stop: 29092, Start Num: 9
Candidate Starts for Rasputia_55:
(Start: 9 @28838 has 4 MA's), (11, 28925), (24, 29063),

Gene: RobsFeet_27 Start: 13286, Stop: 13564, Start Num: 7
Candidate Starts for RobsFeet_27:
(2, 12581), (3, 12662), (4, 12701), (5, 12905), (Start: 7 @13286 has 32 MA's), (Start: 8 @13292 has 17 MA's), (20, 13448), (21, 13451),

Gene: Savannah_25 Start: 13438, Stop: 13680, Start Num: 7
Candidate Starts for Savannah_25:
(2, 12736), (4, 12856), (Start: 7 @13438 has 32 MA's), (Start: 8 @13444 has 17 MA's),

Gene: Scumberland_27 Start: 13629, Stop: 13871, Start Num: 7
Candidate Starts for Scumberland_27:
(2, 12927), (4, 13047), (Start: 7 @13629 has 32 MA's), (Start: 8 @13635 has 17 MA's),

Gene: Selwyn23_27 Start: 13607, Stop: 13849, Start Num: 7

Candidate Starts for Selwyn23_27:

(2, 12905), (4, 13025), (Start: 7 @13607 has 32 MA's), (Start: 8 @13613 has 17 MA's),

Gene: Shotgun_25 Start: 13236, Stop: 13478, Start Num: 7

Candidate Starts for Shotgun_25:

(2, 12534), (4, 12654), (Start: 7 @13236 has 32 MA's), (Start: 8 @13242 has 17 MA's),

Gene: Smarties_34 Start: 15114, Stop: 15389, Start Num: 7

Candidate Starts for Smarties_34:

(Start: 7 @15114 has 32 MA's), (Start: 8 @15120 has 17 MA's), (20, 15279), (21, 15282),

Gene: Sunny_26 Start: 13679, Stop: 13921, Start Num: 8

Candidate Starts for Sunny_26:

(5, 13295), (Start: 8 @13679 has 17 MA's), (18, 13808),

Gene: Teamocil_27 Start: 12805, Stop: 13083, Start Num: 7

Candidate Starts for Teamocil_27:

(3, 12184), (4, 12223), (5, 12427), (Start: 7 @12805 has 32 MA's), (Start: 8 @12811 has 17 MA's),
(20, 12967), (21, 12970), (22, 12997),

Gene: Terij_21 Start: 12677, Stop: 12964, Start Num: 8

Candidate Starts for Terij_21:

(Start: 8 @12677 has 17 MA's), (24, 12929),

Gene: Tyumbra_24 Start: 12362, Stop: 12640, Start Num: 7

Candidate Starts for Tyumbra_24:

(2, 11657), (3, 11738), (4, 11777), (5, 11981), (Start: 7 @12362 has 32 MA's), (Start: 8 @12368 has
17 MA's), (20, 12524), (21, 12527),

Gene: Yeti_26 Start: 13410, Stop: 13652, Start Num: 7

Candidate Starts for Yeti_26:

(2, 12708), (4, 12828), (Start: 7 @13410 has 32 MA's), (Start: 8 @13416 has 17 MA's),