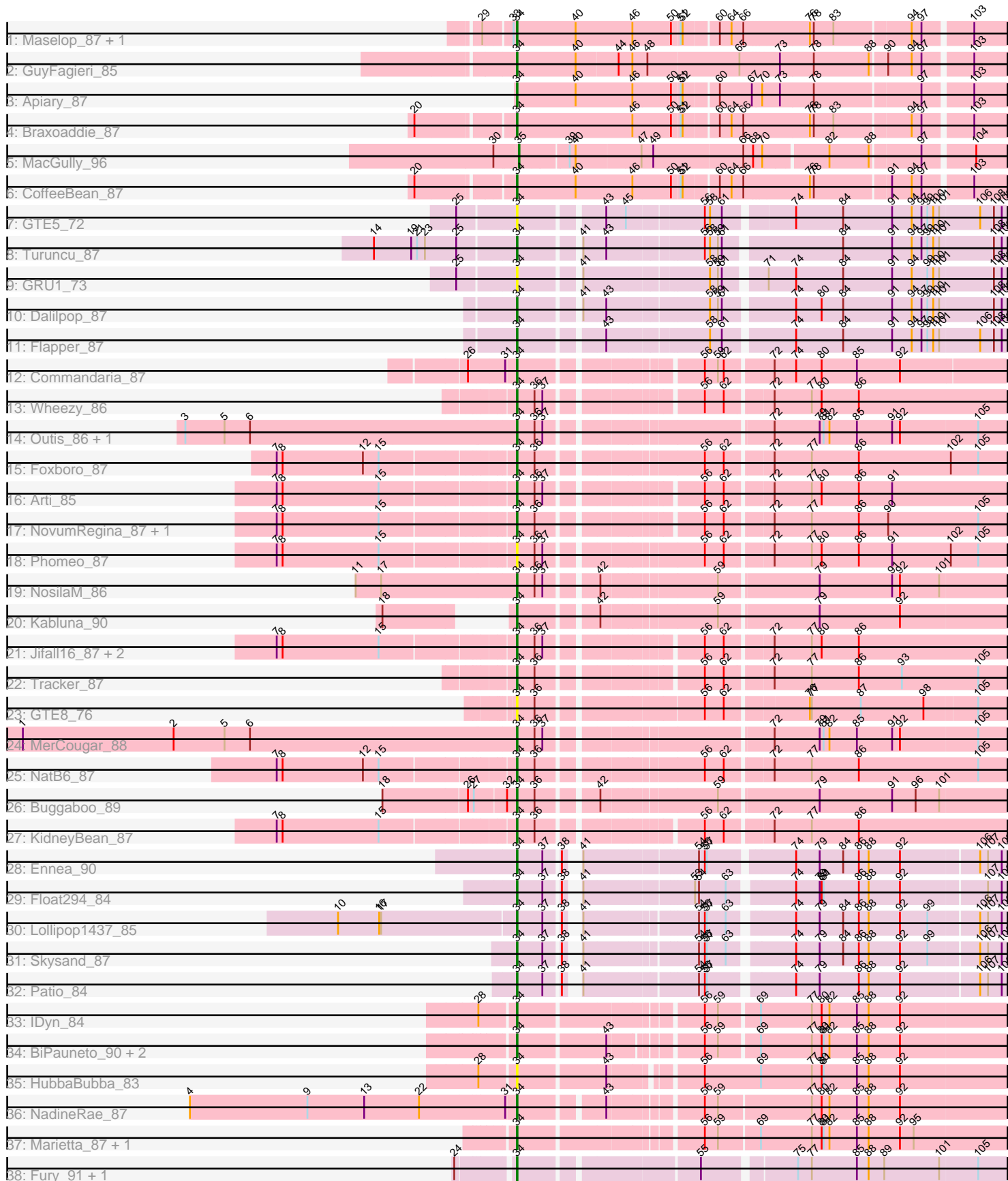


Pham 188222



Note: Tracks are now grouped by subcluster and scaled. Switching in subcluster is indicated by changes in track color. Track scale is now set by default to display the region 30 bp upstream of start 1 to 30 bp downstream of the last possible start. If this default region is judged to be packed too tightly with annotated starts, the track will be further scaled to only show that region of the ORF with annotated starts. This action will be indicated by adding "Zoomed" to the title. For starts, yellow indicates the location of called starts comprised solely of Glimmer/GeneMark auto-annotations, green indicates the location of called starts with at least 1 manual gene annotation.

Pham 188222 Report

This analysis was run 11/02/24 on database version 579.

Pham number 188222 has 47 members, 5 are drafts.

Phages represented in each track:

- Track 1 : Maselop_87, Polyuyuki_86
- Track 2 : GuyFagieri_85
- Track 3 : Apiary_87
- Track 4 : Braxoaddie_87
- Track 5 : MacGully_96
- Track 6 : CoffeeBean_87
- Track 7 : GTE5_72
- Track 8 : Turuncu_87
- Track 9 : GRU1_73
- Track 10 : Dalilpop_87
- Track 11 : Flapper_87
- Track 12 : Commandaria_87
- Track 13 : Wheezy_86
- Track 14 : Outis_86, StarStruck_86
- Track 15 : Foxboro_87
- Track 16 : Arti_85
- Track 17 : NovumRegina_87, GrootJr_89
- Track 18 : Phomeo_87
- Track 19 : NosilaM_86
- Track 20 : Kabluna_90
- Track 21 : Jifall16_87, Kurt_89, Emianna_89
- Track 22 : Tracker_87
- Track 23 : GTE8_76
- Track 24 : MerCougar_88
- Track 25 : NatB6_87
- Track 26 : Buggaboo_89
- Track 27 : KidneyBean_87
- Track 28 : Ennea_90
- Track 29 : Float294_84
- Track 30 : Lollipop1437_85
- Track 31 : Skysand_87
- Track 32 : Patio_84
- Track 33 : IDyn_84
- Track 34 : BiPauneto_90, Yndexa_88, Sukkupi_88
- Track 35 : HubbaBubba_83
- Track 36 : NadineRae_87
- Track 37 : Marietta_87, WhoseManz_87

- Track 38 : Fury_91, Pleakley_91

Summary of Final Annotations (See graph section above for start numbers):

The start number called the most often in the published annotations is 34, it was called in 41 of the 42 non-draft genes in the pham.

Genes that call this "Most Annotated" start:

- Apiary_87, Arti_85, BiPauneto_90, Braxoaddie_87, Buggaboo_89, CoffeeBean_87, Commandaria_87, Dalilpop_87, Emianna_89, Ennea_90, Flapper_87, Float294_84, Foxboro_87, Fury_91, GRU1_73, GTE5_72, GTE8_76, GrootJr_89, GuyFagieri_85, HubbaBubba_83, IDyn_84, Jifall16_87, Kabluna_90, KidneyBean_87, Kurt_89, Lollipop1437_85, Marietta_87, Maselop_87, MerCougar_88, NadineRae_87, NatB6_87, NosilaM_86, NovumRegina_87, Outis_86, Patio_84, Phomeo_87, Pleakley_91, Polyuyuki_86, Skysand_87, StarStruck_86, Sukkupi_88, Tracker_87, Turuncu_87, Wheezy_86, WhoseManz_87, Yndexa_88,

Genes that have the "Most Annotated" start but do not call it:

-

Genes that do not have the "Most Annotated" start:

- MacGully_96,

Summary by start number:

Start 34:

- Found in 46 of 47 (97.9%) of genes in pham
- Manual Annotations of this start: 41 of 42
- Called 100.0% of time when present
- Phage (with cluster) where this start called: Apiary_87 (CR), Arti_85 (CR2), BiPauneto_90 (CR4), Braxoaddie_87 (CR), Buggaboo_89 (CR2), CoffeeBean_87 (CR), Commandaria_87 (CR2), Dalilpop_87 (CR1), Emianna_89 (CR2), Ennea_90 (CR3), Flapper_87 (CR1), Float294_84 (CR3), Foxboro_87 (CR2), Fury_91 (CR5), GRU1_73 (CR1), GTE5_72 (CR1), GTE8_76 (CR2), GrootJr_89 (CR2), GuyFagieri_85 (CR), HubbaBubba_83 (CR4), IDyn_84 (CR4), Jifall16_87 (CR2), Kabluna_90 (CR2), KidneyBean_87 (CR2), Kurt_89 (CR2), Lollipop1437_85 (CR3), Marietta_87 (CR4), Maselop_87 (CR), MerCougar_88 (CR2), NadineRae_87 (CR4), NatB6_87 (CR2), NosilaM_86 (CR2), NovumRegina_87 (CR2), Outis_86 (CR2), Patio_84 (CR3), Phomeo_87 (CR2), Pleakley_91 (CR5), Polyuyuki_86 (CR), Skysand_87 (CR3), StarStruck_86 (CR2), Sukkupi_88 (CR4), Tracker_87 (CR2), Turuncu_87 (CR1), Wheezy_86 (CR2), WhoseManz_87 (CR4), Yndexa_88 (CR4),

Start 35:

- Found in 1 of 47 (2.1%) of genes in pham
- Manual Annotations of this start: 1 of 42
- Called 100.0% of time when present
- Phage (with cluster) where this start called: MacGully_96 (CR),

Summary by clusters:

There are 6 clusters represented in this pham: CR2, CR3, CR1, CR4, CR5, CR,

Info for manual annotations of cluster CR:

- Start number 34 was manually annotated 6 times for cluster CR.
- Start number 35 was manually annotated 1 time for cluster CR.

Info for manual annotations of cluster CR1:

- Start number 34 was manually annotated 3 times for cluster CR1.

Info for manual annotations of cluster CR2:

- Start number 34 was manually annotated 18 times for cluster CR2.

Info for manual annotations of cluster CR3:

- Start number 34 was manually annotated 5 times for cluster CR3.

Info for manual annotations of cluster CR4:

- Start number 34 was manually annotated 7 times for cluster CR4.

Info for manual annotations of cluster CR5:

- Start number 34 was manually annotated 2 times for cluster CR5.

Gene Information:

Gene: Apiary_87 Start: 60837, Stop: 61550, Start Num: 34

Candidate Starts for Apiary_87:

(Start: 34 @60837 has 41 MA's), (40, 60927), (46, 61014), (50, 61071), (51, 61083), (52, 61086), (60, 61134), (67, 61182), (70, 61197), (73, 61224), (78, 61275), (97, 61431), (103, 61500),

Gene: Arti_85 Start: 63159, Stop: 63842, Start Num: 34

Candidate Starts for Arti_85:

(7, 62817), (8, 62826), (15, 62973), (Start: 34 @63159 has 41 MA's), (36, 63186), (37, 63198), (56, 63399), (62, 63426), (72, 63489), (77, 63546), (80, 63561), (86, 63618), (91, 63669),

Gene: BiPauneto_90 Start: 62982, Stop: 63671, Start Num: 34

Candidate Starts for BiPauneto_90:

(Start: 34 @62982 has 41 MA's), (43, 63108), (56, 63225), (59, 63243), (69, 63300), (77, 63378), (80, 63393), (81, 63396), (82, 63405), (85, 63447), (88, 63465), (92, 63513),

Gene: Braxoaddie_87 Start: 60838, Stop: 61548, Start Num: 34

Candidate Starts for Braxoaddie_87:

(20, 60703), (Start: 34 @60838 has 41 MA's), (46, 61015), (50, 61072), (51, 61084), (52, 61087), (60, 61135), (64, 61153), (66, 61171), (76, 61267), (78, 61273), (83, 61303), (94, 61414), (97, 61429), (103, 61498),

Gene: Buggaboo_89 Start: 64935, Stop: 65627, Start Num: 34

Candidate Starts for Buggaboo_89:

(18, 64743), (26, 64869), (27, 64878), (32, 64920), (Start: 34 @64935 has 41 MA's), (36, 64962), (42, 65040), (59, 65202), (79, 65346), (91, 65457), (96, 65493), (101, 65529),

Gene: CoffeeBean_87 Start: 60796, Stop: 61506, Start Num: 34

Candidate Starts for CoffeeBean_87:

(20, 60661), (Start: 34 @60796 has 41 MA's), (40, 60886), (46, 60973), (50, 61030), (51, 61042), (52, 61045), (60, 61093), (64, 61111), (66, 61129), (76, 61225), (78, 61231), (91, 61342), (94, 61372), (97, 61387), (103, 61456),

Gene: Commandaria_87 Start: 64123, Stop: 64806, Start Num: 34

Candidate Starts for Commandaria_87:

(26, 64057), (31, 64108), (Start: 34 @64123 has 41 MA's), (56, 64363), (59, 64381), (62, 64390), (72, 64459), (74, 64492), (80, 64531), (85, 64585), (92, 64651),

Gene: Dalilpop_87 Start: 62545, Stop: 63237, Start Num: 34

Candidate Starts for Dalilpop_87:

(Start: 34 @62545 has 41 MA's), (41, 62626), (43, 62659), (58, 62803), (59, 62815), (61, 62821), (74, 62920), (80, 62959), (84, 62992), (91, 63067), (94, 63097), (97, 63112), (99, 63121), (100, 63130), (101, 63139), (108, 63220), (109, 63232),

Gene: Emianna_89 Start: 64859, Stop: 65542, Start Num: 34

Candidate Starts for Emianna_89:

(7, 64517), (8, 64526), (15, 64673), (Start: 34 @64859 has 41 MA's), (36, 64886), (37, 64898), (56, 65099), (62, 65126), (72, 65189), (77, 65246), (80, 65261), (86, 65318),

Gene: Ennea_90 Start: 62727, Stop: 63398, Start Num: 34

Candidate Starts for Ennea_90:

(Start: 34 @62727 has 41 MA's), (37, 62766), (38, 62787), (41, 62796), (54, 62958), (56, 62967), (57, 62970), (74, 63087), (79, 63123), (84, 63159), (86, 63183), (88, 63198), (92, 63246), (106, 63360), (107, 63372), (109, 63393),

Gene: Flapper_87 Start: 62379, Stop: 63068, Start Num: 34

Candidate Starts for Flapper_87:

(Start: 34 @62379 has 41 MA's), (43, 62493), (58, 62634), (61, 62652), (74, 62751), (84, 62823), (91, 62898), (94, 62928), (97, 62943), (99, 62952), (100, 62961), (101, 62970), (106, 63030), (108, 63051), (109, 63063),

Gene: Float294_84 Start: 62632, Stop: 63300, Start Num: 34

Candidate Starts for Float294_84:

(Start: 34 @62632 has 41 MA's), (37, 62671), (38, 62692), (41, 62701), (53, 62857), (54, 62863), (63, 62902), (74, 62989), (79, 63025), (80, 63028), (81, 63031), (86, 63085), (88, 63100), (92, 63148), (107, 63274), (109, 63295),

Gene: Foxboro_87 Start: 64464, Stop: 65156, Start Num: 34

Candidate Starts for Foxboro_87:

(7, 64122), (8, 64131), (12, 64254), (15, 64278), (Start: 34 @64464 has 41 MA's), (36, 64491), (56, 64713), (62, 64740), (72, 64803), (77, 64860), (86, 64932), (102, 65073), (105, 65115),

Gene: Fury_91 Start: 60431, Stop: 61120, Start Num: 34

Candidate Starts for Fury_91:

(24, 60356), (Start: 34 @60431 has 41 MA's), (55, 60680), (75, 60806), (77, 60827), (85, 60896), (88, 60914), (89, 60938), (101, 61022), (105, 61079),

Gene: GRU1_73 Start: 53998, Stop: 54684, Start Num: 34

Candidate Starts for GRU1_73:

(25, 53917), (Start: 34 @53998 has 41 MA's), (41, 54079), (58, 54253), (59, 54265), (61, 54271), (71, 54325), (74, 54367), (84, 54439), (91, 54514), (94, 54544), (99, 54568), (100, 54577), (101, 54586), (108, 54667), (109, 54679),

Gene: GTE5_72 Start: 54889, Stop: 55575, Start Num: 34

Candidate Starts for GTE5_72:

(25, 54808), (Start: 34 @54889 has 41 MA's), (43, 55003), (45, 55033), (56, 55138), (58, 55144), (61, 55162), (74, 55258), (84, 55330), (91, 55405), (94, 55435), (97, 55450), (99, 55459), (100, 55468), (101, 55477), (106, 55537), (108, 55558), (109, 55570),

Gene: GTE8_76 Start: 57064, Stop: 57753, Start Num: 34

Candidate Starts for GTE8_76:

(Start: 34 @57064 has 41 MA's), (36, 57091), (56, 57319), (62, 57346), (76, 57460), (77, 57463), (87, 57538), (98, 57634), (105, 57712),

Gene: GrootJr_89 Start: 63867, Stop: 64550, Start Num: 34

Candidate Starts for GrootJr_89:

(7, 63525), (8, 63534), (15, 63681), (Start: 34 @63867 has 41 MA's), (36, 63894), (56, 64107), (62, 64134), (72, 64197), (77, 64254), (86, 64326), (90, 64371), (105, 64509),

Gene: GuyFagieri_85 Start: 60413, Stop: 61129, Start Num: 34

Candidate Starts for GuyFagieri_85:

(Start: 34 @60413 has 41 MA's), (40, 60503), (44, 60566), (46, 60587), (48, 60608), (65, 60746), (73, 60803), (78, 60854), (88, 60938), (90, 60959), (94, 60995), (97, 61010), (103, 61079),

Gene: HubbaBubba_83 Start: 59977, Stop: 60675, Start Num: 34

Candidate Starts for HubbaBubba_83:

(28, 59929), (Start: 34 @59977 has 41 MA's), (43, 60103), (56, 60220), (69, 60304), (77, 60382), (80, 60397), (81, 60400), (85, 60451), (88, 60469), (92, 60517),

Gene: IDyn_84 Start: 60626, Stop: 61321, Start Num: 34

Candidate Starts for IDyn_84:

(28, 60578), (Start: 34 @60626 has 41 MA's), (56, 60875), (59, 60893), (69, 60950), (77, 61028), (80, 61043), (82, 61055), (85, 61097), (88, 61115), (92, 61163),

Gene: Jifall16_87 Start: 64115, Stop: 64798, Start Num: 34

Candidate Starts for Jifall16_87:

(7, 63773), (8, 63782), (15, 63929), (Start: 34 @64115 has 41 MA's), (36, 64142), (37, 64154), (56, 64355), (62, 64382), (72, 64445), (77, 64502), (80, 64517), (86, 64574),

Gene: Kabluna_90 Start: 62117, Stop: 62809, Start Num: 34

Candidate Starts for Kabluna_90:

(18, 61997), (Start: 34 @62117 has 41 MA's), (42, 62222), (59, 62384), (79, 62528), (92, 62651),

Gene: KidneyBean_87 Start: 64452, Stop: 65135, Start Num: 34

Candidate Starts for KidneyBean_87:

(7, 64110), (8, 64119), (15, 64266), (Start: 34 @64452 has 41 MA's), (36, 64479), (56, 64692), (62, 64719), (72, 64782), (77, 64839), (86, 64911),

Gene: Kurt_89 Start: 64874, Stop: 65557, Start Num: 34

Candidate Starts for Kurt_89:

(7, 64532), (8, 64541), (15, 64688), (Start: 34 @64874 has 41 MA's), (36, 64901), (37, 64913), (56, 65114), (62, 65141), (72, 65204), (77, 65261), (80, 65276), (86, 65333),

Gene: Lollipop1437_85 Start: 62420, Stop: 63082, Start Num: 34

Candidate Starts for Lollipop1437_85:

(10, 62153), (16, 62216), (17, 62219), (Start: 34 @62420 has 41 MA's), (37, 62459), (38, 62480), (41, 62489), (54, 62645), (56, 62654), (57, 62657), (63, 62684), (74, 62771), (79, 62807), (84, 62843), (86, 62867), (88, 62882), (92, 62930), (99, 62972), (106, 63044), (107, 63056), (109, 63077),

Gene: MacGully_96 Start: 63179, Stop: 63874, Start Num: 35

Candidate Starts for MacGully_96:

(30, 63146), (Start: 35 @63179 has 1 MA's), (39, 63248), (40, 63257), (47, 63353), (49, 63371), (66, 63506), (68, 63521), (70, 63533), (82, 63623), (88, 63683), (97, 63755), (104, 63827),

Gene: Marietta_87 Start: 60667, Stop: 61365, Start Num: 34

Candidate Starts for Marietta_87:

(Start: 34 @60667 has 41 MA's), (56, 60916), (59, 60934), (69, 60994), (77, 61072), (80, 61087), (81, 61090), (82, 61099), (85, 61141), (88, 61159), (92, 61207), (95, 61228),

Gene: Maselop_87 Start: 60846, Stop: 61556, Start Num: 34

Candidate Starts for Maselop_87:

(29, 60804), (33, 60843), (Start: 34 @60846 has 41 MA's), (40, 60936), (46, 61023), (50, 61080), (51, 61092), (52, 61095), (60, 61143), (64, 61161), (66, 61179), (76, 61275), (78, 61281), (83, 61311), (94, 61422), (97, 61437), (103, 61506),

Gene: MerCougar_88 Start: 64667, Stop: 65359, Start Num: 34

Candidate Starts for MerCougar_88:

(1, 63917), (2, 64148), (5, 64226), (6, 64265), (Start: 34 @64667 has 41 MA's), (36, 64694), (37, 64706), (72, 65009), (79, 65078), (81, 65084), (82, 65093), (85, 65135), (91, 65189), (92, 65201), (105, 65318),

Gene: NadineRae_87 Start: 60610, Stop: 61296, Start Num: 34

Candidate Starts for NadineRae_87:

(4, 60121), (9, 60301), (13, 60388), (22, 60472), (31, 60595), (Start: 34 @60610 has 41 MA's), (43, 60724), (56, 60847), (59, 60865), (77, 61003), (80, 61018), (82, 61030), (85, 61072), (88, 61090), (92, 61138),

Gene: NatB6_87 Start: 63499, Stop: 64191, Start Num: 34

Candidate Starts for NatB6_87:

(7, 63157), (8, 63166), (12, 63289), (15, 63313), (Start: 34 @63499 has 41 MA's), (36, 63526), (56, 63748), (62, 63775), (72, 63838), (77, 63895), (86, 63967), (105, 64150),

Gene: NosilaM_86 Start: 63524, Stop: 64216, Start Num: 34

Candidate Starts for NosilaM_86:

(11, 63284), (17, 63323), (Start: 34 @63524 has 41 MA's), (36, 63551), (37, 63563), (42, 63629), (59, 63791), (79, 63935), (91, 64046), (92, 64058), (101, 64118),

Gene: NovumRegina_87 Start: 63866, Stop: 64549, Start Num: 34

Candidate Starts for NovumRegina_87:

(7, 63524), (8, 63533), (15, 63680), (Start: 34 @63866 has 41 MA's), (36, 63893), (56, 64106), (62, 64133), (72, 64196), (77, 64253), (86, 64325), (90, 64370), (105, 64508),

Gene: Outis_86 Start: 63940, Stop: 64632, Start Num: 34

Candidate Starts for Outis_86:

(3, 63439), (5, 63499), (6, 63538), (Start: 34 @63940 has 41 MA's), (36, 63967), (37, 63979), (72, 64282), (79, 64351), (81, 64357), (82, 64366), (85, 64408), (91, 64462), (92, 64474), (105, 64591),

Gene: Patio_84 Start: 61626, Stop: 62291, Start Num: 34

Candidate Starts for Patio_84:

(Start: 34 @61626 has 41 MA's), (37, 61665), (38, 61686), (41, 61695), (54, 61854), (56, 61863), (57, 61866), (74, 61980), (79, 62016), (86, 62076), (88, 62091), (92, 62139), (106, 62253), (107, 62265), (109, 62286),

Gene: Phomeo_87 Start: 64111, Stop: 64803, Start Num: 34

Candidate Starts for Phomeo_87:

(7, 63769), (8, 63778), (15, 63925), (Start: 34 @64111 has 41 MA's), (36, 64138), (37, 64150), (56, 64360), (62, 64387), (72, 64450), (77, 64507), (80, 64522), (86, 64579), (91, 64630), (102, 64720), (105, 64762),

Gene: Pleakley_91 Start: 60432, Stop: 61121, Start Num: 34

Candidate Starts for Pleakley_91:

(24, 60357), (Start: 34 @60432 has 41 MA's), (55, 60681), (75, 60807), (77, 60828), (85, 60897), (88, 60915), (89, 60939), (101, 61023), (105, 61080),

Gene: Polyuyki_86 Start: 60856, Stop: 61566, Start Num: 34

Candidate Starts for Polyuyki_86:

(29, 60814), (33, 60853), (Start: 34 @60856 has 41 MA's), (40, 60946), (46, 61033), (50, 61090), (51, 61102), (52, 61105), (60, 61153), (64, 61171), (66, 61189), (76, 61285), (78, 61291), (83, 61321), (94, 61432), (97, 61447), (103, 61516),

Gene: Skysand_87 Start: 62582, Stop: 63244, Start Num: 34

Candidate Starts for Skysand_87:

(Start: 34 @62582 has 41 MA's), (37, 62621), (38, 62642), (41, 62651), (54, 62807), (56, 62816), (57, 62819), (63, 62846), (74, 62933), (79, 62969), (84, 63005), (86, 63029), (88, 63044), (92, 63092), (99, 63134), (106, 63206), (107, 63218), (109, 63239),

Gene: StarStruck_86 Start: 63940, Stop: 64632, Start Num: 34

Candidate Starts for StarStruck_86:

(3, 63439), (5, 63499), (6, 63538), (Start: 34 @63940 has 41 MA's), (36, 63967), (37, 63979), (72, 64282), (79, 64351), (81, 64357), (82, 64366), (85, 64408), (91, 64462), (92, 64474), (105, 64591),

Gene: Sukkupi_88 Start: 62790, Stop: 63485, Start Num: 34

Candidate Starts for Sukkupi_88:

(Start: 34 @62790 has 41 MA's), (43, 62916), (56, 63039), (59, 63057), (69, 63114), (77, 63192), (80, 63207), (81, 63210), (82, 63219), (85, 63261), (88, 63279), (92, 63327),

Gene: Tracker_87 Start: 63291, Stop: 63974, Start Num: 34

Candidate Starts for Tracker_87:

(Start: 34 @63291 has 41 MA's), (36, 63318), (56, 63531), (62, 63558), (72, 63621), (77, 63678), (86, 63750), (93, 63816), (105, 63933),

Gene: Turuncu_87 Start: 61998, Stop: 62684, Start Num: 34

Candidate Starts for Turuncu_87:

(14, 61791), (19, 61848), (21, 61857), (23, 61869), (25, 61917), (Start: 34 @61998 has 41 MA's), (41, 62079), (43, 62112), (56, 62247), (58, 62253), (59, 62265), (61, 62271), (84, 62439), (91, 62514), (94, 62544), (97, 62559), (99, 62568), (100, 62577), (101, 62586), (108, 62667), (109, 62679),

Gene: Wheezy_86 Start: 63691, Stop: 64374, Start Num: 34

Candidate Starts for Wheezy_86:

(Start: 34 @63691 has 41 MA's), (36, 63718), (37, 63730), (56, 63931), (62, 63958), (72, 64021), (77, 64078), (80, 64093), (86, 64150),

Gene: WhoseManz_87 Start: 60330, Stop: 61028, Start Num: 34

Candidate Starts for WhoseManz_87:

(Start: 34 @60330 has 41 MA's), (56, 60579), (59, 60597), (69, 60657), (77, 60735), (80, 60750), (81, 60753), (82, 60762), (85, 60804), (88, 60822), (92, 60870), (95, 60891),

Gene: Yndexa_88 Start: 62790, Stop: 63485, Start Num: 34

Candidate Starts for Yndexa_88:

(Start: 34 @62790 has 41 MA's), (43, 62916), (56, 63039), (59, 63057), (69, 63114), (77, 63192), (80, 63207), (81, 63210), (82, 63219), (85, 63261), (88, 63279), (92, 63327),