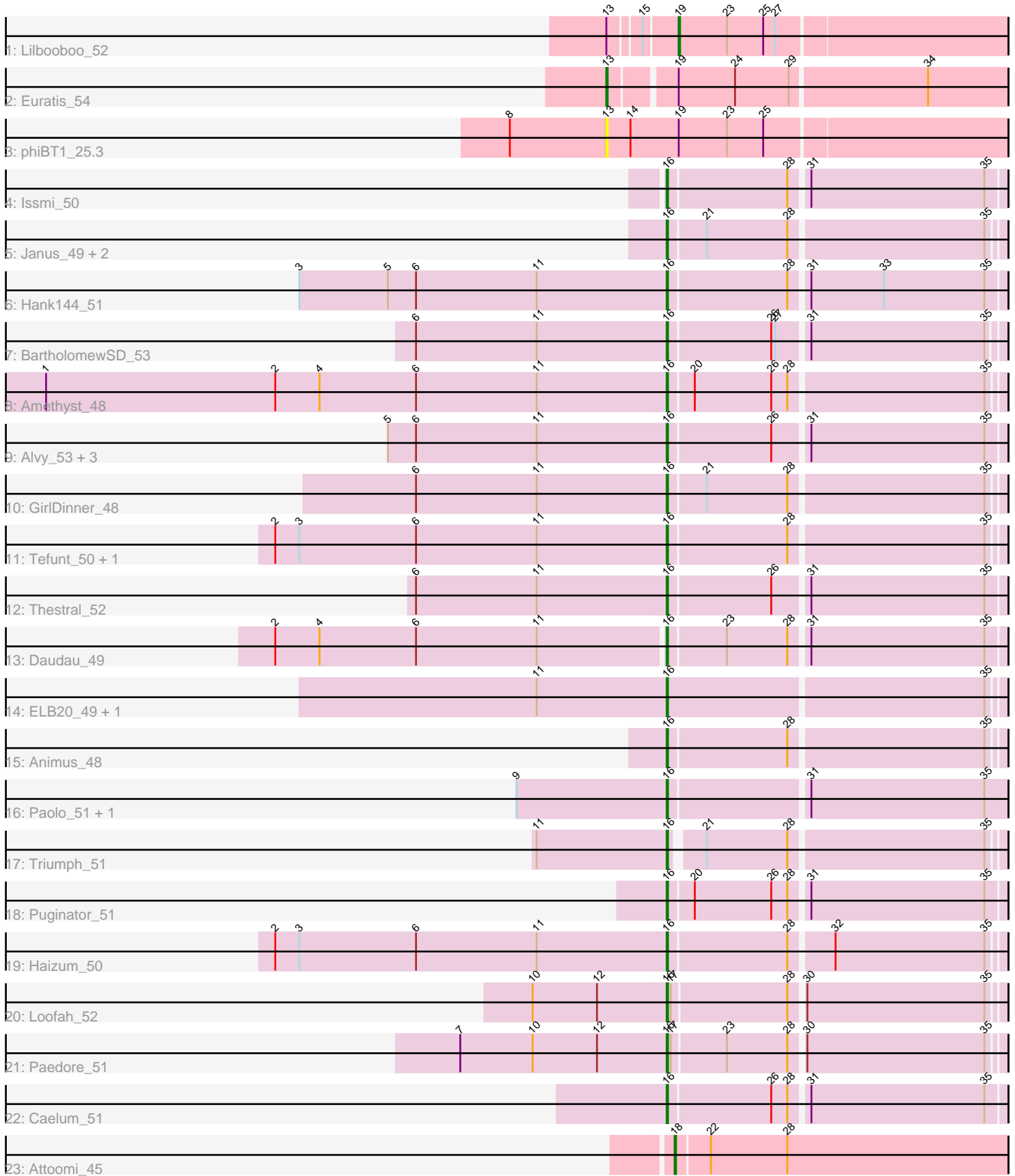


Pham 188341



Note: Tracks are now grouped by subcluster and scaled. Switching in subcluster is indicated by changes in track color. Track scale is now set by default to display the region 30 bp upstream of start 1 to 30 bp downstream of the last possible start. If this default region is judged to be packed too tightly with annotated starts, the track will be further scaled to only show that region of the ORF with annotated starts. This action will be indicated by adding "Zoomed" to the title. For starts, yellow indicates the location of called starts comprised solely of Glimmer/GeneMark auto-annotations, green indicates the location of called starts with at least 1 manual gene annotation.

Pham 188341 Report

This analysis was run 11/02/24 on database version 579.

Pham number 188341 has 31 members, 1 are drafts.

Phages represented in each track:

- Track 1 : Lilbooboo_52
- Track 2 : Euratis_54
- Track 3 : phiBT1_25.3
- Track 4 : Issmi_50
- Track 5 : Janus_49, Pablito_49, SqueakyClean_48
- Track 6 : Hank144_51
- Track 7 : BartholomewSD_53
- Track 8 : Amethyst_48
- Track 9 : Alvy_53, Bowden_50, TrvxScott_49, TinaBelcher_50
- Track 10 : GirlDinner_48
- Track 11 : Tefunt_50, Nishikigoi_50
- Track 12 : Thestral_52
- Track 13 : Daudau_49
- Track 14 : ELB20_49, R4_50
- Track 15 : Animus_48
- Track 16 : Paolo_51, Zainub_51
- Track 17 : Triumph_51
- Track 18 : Puginator_51
- Track 19 : Haizum_50
- Track 20 : Loofah_52
- Track 21 : Paedore_51
- Track 22 : Caelum_51
- Track 23 : Attoomi_45

Summary of Final Annotations (See graph section above for start numbers):

The start number called the most often in the published annotations is 16, it was called in 27 of the 30 non-draft genes in the pham.

Genes that call this "Most Annotated" start:

- Alvy_53, Amethyst_48, Animus_48, BartholomewSD_53, Bowden_50, Caelum_51, Daudau_49, ELB20_49, GirlDinner_48, Haizum_50, Hank144_51, Issmi_50, Janus_49, Loofah_52, Nishikigoi_50, Pablito_49, Paedore_51, Paolo_51, Puginator_51, R4_50, SqueakyClean_48, Tefunt_50, Thestral_52, TinaBelcher_50,

Triumph_51, TrvxScott_49, Zainub_51,

Genes that have the "Most Annotated" start but do not call it:

-

Genes that do not have the "Most Annotated" start:

- Attoomi_45, Euratis_54, Lilbooboo_52, phiBT1_25.3,

Summary by start number:

Start 13:

- Found in 3 of 31 (9.7%) of genes in pham
- Manual Annotations of this start: 1 of 30
- Called 66.7% of time when present
- Phage (with cluster) where this start called: Euratis_54 (BB1), phiBT1_25.3 (BB1),

Start 16:

- Found in 27 of 31 (87.1%) of genes in pham
- Manual Annotations of this start: 27 of 30
- Called 100.0% of time when present
- Phage (with cluster) where this start called: Alvy_53 (BD2), Amethyst_48 (BD2), Animus_48 (BD2), BartholomewSD_53 (BD2), Bowden_50 (BD2), Caelum_51 (BD2), Daudau_49 (BD2), ELB20_49 (BD2), GirlDinner_48 (BD2), Haizum_50 (BD2), Hank144_51 (BD2), Issmi_50 (BD2), Janus_49 (BD2), Loofah_52 (BD2), Nishikigoi_50 (BD2), Pablito_49 (BD2), Paedore_51 (BD2), Paolo_51 (BD2), Puginator_51 (BD2), R4_50 (BD2), SqueakyClean_48 (BD2), Tefunt_50 (BD2), Thestral_52 (BD2), TinaBelcher_50 (BD2), Triumph_51 (BD2), TrvxScott_49 (BD2), Zainub_51 (BD2),

Start 18:

- Found in 1 of 31 (3.2%) of genes in pham
- Manual Annotations of this start: 1 of 30
- Called 100.0% of time when present
- Phage (with cluster) where this start called: Attoomi_45 (singleton),

Start 19:

- Found in 3 of 31 (9.7%) of genes in pham
- Manual Annotations of this start: 1 of 30
- Called 33.3% of time when present
- Phage (with cluster) where this start called: Lilbooboo_52 (BB1),

Summary by clusters:

There are 3 clusters represented in this pham: singleton, BB1, BD2,

Info for manual annotations of cluster BB1:

- Start number 13 was manually annotated 1 time for cluster BB1.
- Start number 19 was manually annotated 1 time for cluster BB1.

Info for manual annotations of cluster BD2:

- Start number 16 was manually annotated 27 times for cluster BD2.

Gene Information:

Gene: Alvy_53 Start: 36951, Stop: 36709, Start Num: 16

Candidate Starts for Alvy_53:

(5, 37152), (6, 37131), (11, 37041), (Start: 16 @36951 has 27 MA's), (26, 36876), (31, 36852), (35, 36723),

Gene: Amethyst_48 Start: 35181, Stop: 34942, Start Num: 16

Candidate Starts for Amethyst_48:

(1, 35637), (2, 35466), (4, 35433), (6, 35361), (11, 35271), (Start: 16 @35181 has 27 MA's), (20, 35163), (26, 35106), (28, 35094), (35, 34953),

Gene: Animus_48 Start: 35500, Stop: 35261, Start Num: 16

Candidate Starts for Animus_48:

(Start: 16 @35500 has 27 MA's), (28, 35413), (35, 35272),

Gene: Attoomi_45 Start: 35025, Stop: 35270, Start Num: 18

Candidate Starts for Attoomi_45:

(Start: 18 @35025 has 1 MA's), (22, 35049), (28, 35106),

Gene: BartholomewSD_53 Start: 36070, Stop: 35831, Start Num: 16

Candidate Starts for BartholomewSD_53:

(6, 36250), (11, 36160), (Start: 16 @36070 has 27 MA's), (26, 35995), (27, 35992), (31, 35971), (35, 35842),

Gene: Bowden_50 Start: 36865, Stop: 36623, Start Num: 16

Candidate Starts for Bowden_50:

(5, 37066), (6, 37045), (11, 36955), (Start: 16 @36865 has 27 MA's), (26, 36790), (31, 36766), (35, 36637),

Gene: Caelum_51 Start: 35396, Stop: 35154, Start Num: 16

Candidate Starts for Caelum_51:

(Start: 16 @35396 has 27 MA's), (26, 35321), (28, 35309), (31, 35297), (35, 35168),

Gene: Daudau_49 Start: 35343, Stop: 35101, Start Num: 16

Candidate Starts for Daudau_49:

(2, 35628), (4, 35595), (6, 35523), (11, 35433), (Start: 16 @35343 has 27 MA's), (23, 35301), (28, 35256), (31, 35244), (35, 35115),

Gene: ELB20_49 Start: 35943, Stop: 35701, Start Num: 16

Candidate Starts for ELB20_49:

(11, 36033), (Start: 16 @35943 has 27 MA's), (35, 35712),

Gene: Euratis_54 Start: 37615, Stop: 37899, Start Num: 13

Candidate Starts for Euratis_54:

(Start: 13 @37615 has 1 MA's), (Start: 19 @37660 has 1 MA's), (24, 37702), (29, 37741), (34, 37840),

Gene: GirlDinner_48 Start: 35001, Stop: 34762, Start Num: 16

Candidate Starts for GirlDinner_48:

(6, 35181), (11, 35091), (Start: 16 @35001 has 27 MA's), (21, 34974), (28, 34914), (35, 34773),

Gene: Haizum_50 Start: 35451, Stop: 35212, Start Num: 16

Candidate Starts for Haizum_50:

(2, 35736), (3, 35718), (6, 35631), (11, 35541), (Start: 16 @35451 has 27 MA's), (28, 35364), (32, 35334), (35, 35223),

Gene: Hank144_51 Start: 35538, Stop: 35296, Start Num: 16

Candidate Starts for Hank144_51:

(3, 35805), (5, 35739), (6, 35718), (11, 35628), (Start: 16 @35538 has 27 MA's), (28, 35451), (31, 35439), (33, 35385), (35, 35310),

Gene: Issmi_50 Start: 35883, Stop: 35641, Start Num: 16

Candidate Starts for Issmi_50:

(Start: 16 @35883 has 27 MA's), (28, 35796), (31, 35784), (35, 35655),

Gene: Janus_49 Start: 35341, Stop: 35102, Start Num: 16

Candidate Starts for Janus_49:

(Start: 16 @35341 has 27 MA's), (21, 35314), (28, 35254), (35, 35113),

Gene: Lilbooboo_52 Start: 37440, Stop: 37679, Start Num: 19

Candidate Starts for Lilbooboo_52:

(Start: 13 @37395 has 1 MA's), (15, 37416), (Start: 19 @37440 has 1 MA's), (23, 37476), (25, 37503), (27, 37512),

Gene: Loofah_52 Start: 36087, Stop: 35848, Start Num: 16

Candidate Starts for Loofah_52:

(10, 36186), (12, 36138), (Start: 16 @36087 has 27 MA's), (17, 36084), (28, 36000), (30, 35991), (35, 35859),

Gene: Nishikigoi_50 Start: 35451, Stop: 35212, Start Num: 16

Candidate Starts for Nishikigoi_50:

(2, 35736), (3, 35718), (6, 35631), (11, 35541), (Start: 16 @35451 has 27 MA's), (28, 35364), (35, 35223),

Gene: Pablito_49 Start: 35116, Stop: 34880, Start Num: 16

Candidate Starts for Pablito_49:

(Start: 16 @35116 has 27 MA's), (21, 35089), (28, 35029), (35, 34888),

Gene: Paedore_51 Start: 36072, Stop: 35833, Start Num: 16

Candidate Starts for Paedore_51:

(7, 36225), (10, 36171), (12, 36123), (Start: 16 @36072 has 27 MA's), (17, 36069), (23, 36030), (28, 35985), (30, 35976), (35, 35844),

Gene: Paolo_51 Start: 35897, Stop: 35652, Start Num: 16

Candidate Starts for Paolo_51:

(9, 36008), (Start: 16 @35897 has 27 MA's), (31, 35798), (35, 35669),

Gene: Puginator_51 Start: 35933, Stop: 35691, Start Num: 16

Candidate Starts for Puginator_51:

(Start: 16 @35933 has 27 MA's), (20, 35915), (26, 35858), (28, 35846), (31, 35834), (35, 35705),

Gene: R4_50 Start: 35959, Stop: 35717, Start Num: 16

Candidate Starts for R4_50:

(11, 36049), (Start: 16 @35959 has 27 MA's), (35, 35728),

Gene: SqueakyClean_48 Start: 35431, Stop: 35192, Start Num: 16

Candidate Starts for SqueakyClean_48:

(Start: 16 @35431 has 27 MA's), (21, 35404), (28, 35344), (35, 35203),

Gene: Tefunt_50 Start: 35453, Stop: 35214, Start Num: 16

Candidate Starts for Tefunt_50:

(2, 35738), (3, 35720), (6, 35633), (11, 35543), (Start: 16 @35453 has 27 MA's), (28, 35366), (35, 35225),

Gene: Thestral_52 Start: 36856, Stop: 36614, Start Num: 16

Candidate Starts for Thestral_52:

(6, 37036), (11, 36946), (Start: 16 @36856 has 27 MA's), (26, 36781), (31, 36757), (35, 36628),

Gene: TinaBelcher_50 Start: 36804, Stop: 36562, Start Num: 16

Candidate Starts for TinaBelcher_50:

(5, 37005), (6, 36984), (11, 36894), (Start: 16 @36804 has 27 MA's), (26, 36729), (31, 36705), (35, 36576),

Gene: Triumph_51 Start: 35479, Stop: 35246, Start Num: 16

Candidate Starts for Triumph_51:

(11, 35569), (Start: 16 @35479 has 27 MA's), (21, 35458), (28, 35398), (35, 35257),

Gene: TrvxScott_49 Start: 36850, Stop: 36608, Start Num: 16

Candidate Starts for TrvxScott_49:

(5, 37051), (6, 37030), (11, 36940), (Start: 16 @36850 has 27 MA's), (26, 36775), (31, 36751), (35, 36622),

Gene: Zainub_51 Start: 35872, Stop: 35630, Start Num: 16

Candidate Starts for Zainub_51:

(9, 35983), (Start: 16 @35872 has 27 MA's), (31, 35773), (35, 35644),

Gene: phiBT1_25.3 Start: 38224, Stop: 38517, Start Num: 13

Candidate Starts for phiBT1_25.3:

(8, 38152), (Start: 13 @38224 has 1 MA's), (14, 38242), (Start: 19 @38278 has 1 MA's), (23, 38314), (25, 38341),