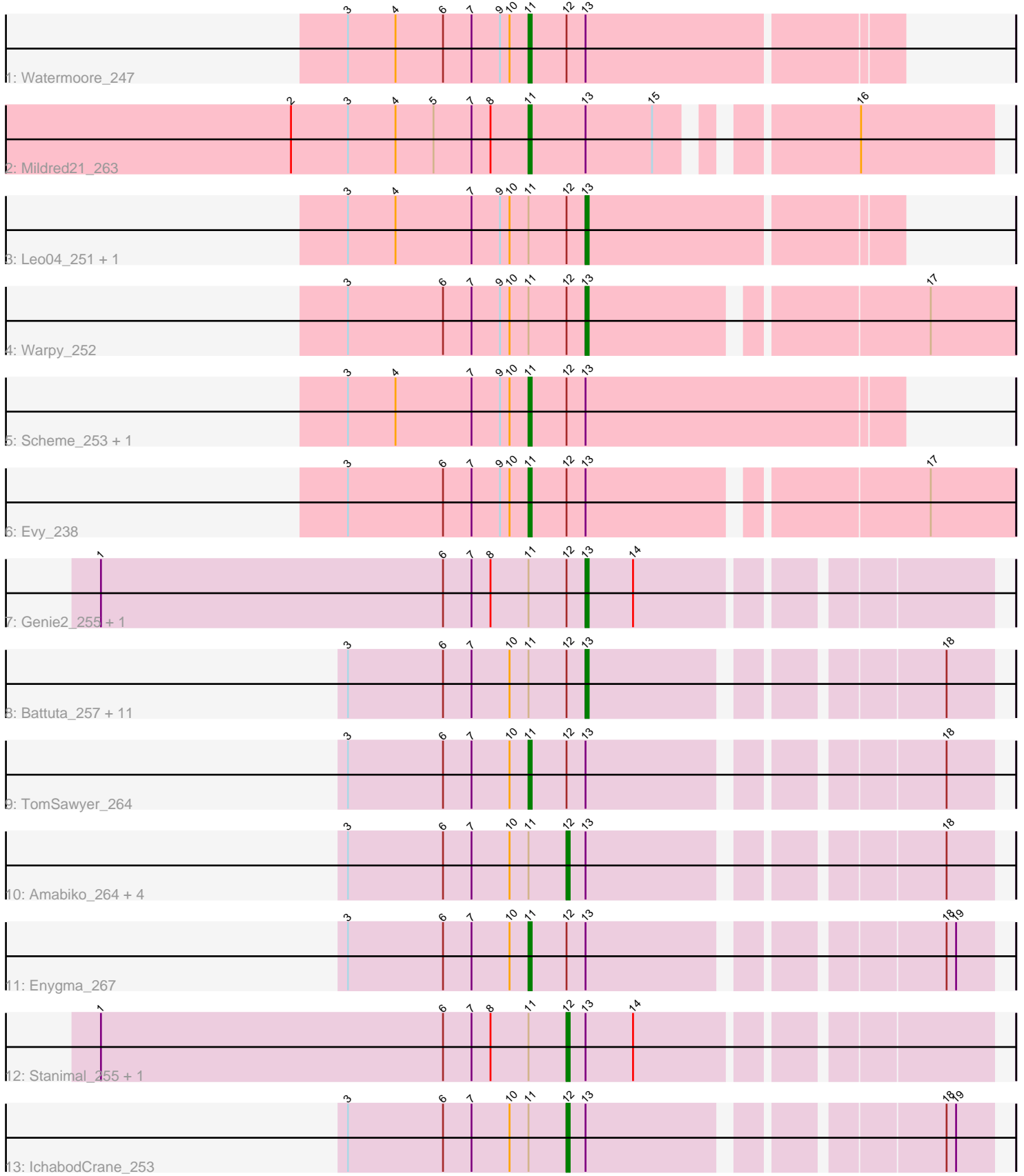


Pham 188344



Note: Tracks are now grouped by subcluster and scaled. Switching in subcluster is indicated by changes in track color. Track scale is now set by default to display the region 30 bp upstream of start 1 to 30 bp downstream of the last possible start. If this default region is judged to be packed too tightly with annotated starts, the track will be further scaled to only show that region of the ORF with annotated starts. This action will be indicated by adding "Zoomed" to the title. For starts, yellow indicates the location of called starts comprised solely of Glimmer/GeneMark auto-annotations, green indicates the location of called starts with at least 1 manual gene annotation.

Pham 188344 Report

This analysis was run 11/02/24 on database version 579.

Pham number 188344 has 32 members, 3 are drafts.

Phages represented in each track:

- Track 1 : Watermoore_247
- Track 2 : Mildred21_263
- Track 3 : Leo04_251, Cursive_254
- Track 4 : Warpy_252
- Track 5 : Scheme_253, Sushi23_250
- Track 6 : Evy_238
- Track 7 : Genie2_255, Yaboi_261
- Track 8 : Battuta_257, SaltySpitoon_259, CeilingFan_273, Birchlyn_259, Jollison_256, PumpkinSpice_262, Bordeaux_257, KentuckyRacer_266, Spelly_264, Quaran19_260, Spilled_267, Wipeout_251
- Track 9 : TomSawyer_264
- Track 10 : Amabiko_264, MindFlayer_252, Gibbi_269, JimJam_267, Starbow_256
- Track 11 : Enygma_267
- Track 12 : Stanimal_255, BoomerJR_255
- Track 13 : IchabodCrane_253

Summary of Final Annotations (See graph section above for start numbers):

The start number called the most often in the published annotations is 13, it was called in 16 of the 29 non-draft genes in the pham.

Genes that call this "Most Annotated" start:

- Battuta_257, Birchlyn_259, Bordeaux_257, CeilingFan_273, Cursive_254, Genie2_255, Jollison_256, KentuckyRacer_266, Leo04_251, PumpkinSpice_262, Quaran19_260, SaltySpitoon_259, Spelly_264, Spilled_267, Warpy_252, Wipeout_251, Yaboi_261,

Genes that have the "Most Annotated" start but do not call it:

- Amabiko_264, BoomerJR_255, Enygma_267, Evy_238, Gibbi_269, IchabodCrane_253, JimJam_267, Mildred21_263, MindFlayer_252, Scheme_253, Stanimal_255, Starbow_256, Sushi23_250, TomSawyer_264, Watermoore_247,

Genes that do not have the "Most Annotated" start:

-

Summary by start number:

Start 11:

- Found in 32 of 32 (100.0%) of genes in pham
- Manual Annotations of this start: 6 of 29
- Called 21.9% of time when present
- Phage (with cluster) where this start called: Enyigma_267 (BE2), Evy_238 (BE1), Mildred21_263 (BE1), Scheme_253 (BE1), Sushi23_250 (BE1), TomSawyer_264 (BE2), Watermoore_247 (BE1),

Start 12:

- Found in 31 of 32 (96.9%) of genes in pham
- Manual Annotations of this start: 7 of 29
- Called 25.8% of time when present
- Phage (with cluster) where this start called: Amabiko_264 (BE2), BoomerJR_255 (BE2), Gibbi_269 (BE2), IchabodCrane_253 (BE2), JimJam_267 (BE2), MindFlayer_252 (BE2), Stanimal_255 (BE2), Starbow_256 (BE2),

Start 13:

- Found in 32 of 32 (100.0%) of genes in pham
- Manual Annotations of this start: 16 of 29
- Called 53.1% of time when present
- Phage (with cluster) where this start called: Battuta_257 (BE2), Birchlyn_259 (BE2), Bordeaux_257 (BE2), CeilingFan_273 (BE2), Cursive_254 (BE1), Genie2_255 (BE2), Jollison_256 (BE2), KentuckyRacer_266 (BE2), Leo04_251 (BE1), PumpkinSpice_262 (BE2), Quaran19_260 (BE2), SaltySpittoon_259 (BE2), Spelly_264 (BE2), Spilled_267 (BE2), Warpy_252 (BE1), Wipeout_251 (BE2), Yaboi_261 (BE2),

Summary by clusters:

There are 2 clusters represented in this pham: BE2, BE1,

Info for manual annotations of cluster BE1:

- Start number 11 was manually annotated 4 times for cluster BE1.
- Start number 13 was manually annotated 3 times for cluster BE1.

Info for manual annotations of cluster BE2:

- Start number 11 was manually annotated 2 times for cluster BE2.
- Start number 12 was manually annotated 7 times for cluster BE2.
- Start number 13 was manually annotated 13 times for cluster BE2.

Gene Information:

Gene: Amabiko_264 Start: 118326, Stop: 118445, Start Num: 12

Candidate Starts for Amabiko_264:

(3, 118257), (6, 118287), (7, 118296), (10, 118308), (Start: 11 @118314 has 6 MA's), (Start: 12 @118326 has 7 MA's), (Start: 13 @118332 has 16 MA's), (18, 118431),

Gene: Battuta_257 Start: 117647, Stop: 117760, Start Num: 13

Candidate Starts for Battuta_257:

(3, 117572), (6, 117602), (7, 117611), (10, 117623), (Start: 11 @117629 has 6 MA's), (Start: 12 @117641 has 7 MA's), (Start: 13 @117647 has 16 MA's), (18, 117746),

Gene: Birchlyn_259 Start: 115580, Stop: 115693, Start Num: 13

Candidate Starts for Birchlyn_259:

(3, 115505), (6, 115535), (7, 115544), (10, 115556), (Start: 11 @115562 has 6 MA's), (Start: 12 @115574 has 7 MA's), (Start: 13 @115580 has 16 MA's), (18, 115679),

Gene: BoomerJR_255 Start: 118246, Stop: 118368, Start Num: 12

Candidate Starts for BoomerJR_255:

(1, 118099), (6, 118207), (7, 118216), (8, 118222), (Start: 11 @118234 has 6 MA's), (Start: 12 @118246 has 7 MA's), (Start: 13 @118252 has 16 MA's), (14, 118267),

Gene: Bordeaux_257 Start: 118230, Stop: 118343, Start Num: 13

Candidate Starts for Bordeaux_257:

(3, 118155), (6, 118185), (7, 118194), (10, 118206), (Start: 11 @118212 has 6 MA's), (Start: 12 @118224 has 7 MA's), (Start: 13 @118230 has 16 MA's), (18, 118329),

Gene: CeilingFan_273 Start: 119485, Stop: 119598, Start Num: 13

Candidate Starts for CeilingFan_273:

(3, 119410), (6, 119440), (7, 119449), (10, 119461), (Start: 11 @119467 has 6 MA's), (Start: 12 @119479 has 7 MA's), (Start: 13 @119485 has 16 MA's), (18, 119584),

Gene: Cursive_254 Start: 121481, Stop: 121576, Start Num: 13

Candidate Starts for Cursive_254:

(3, 121406), (4, 121421), (7, 121445), (9, 121454), (10, 121457), (Start: 11 @121463 has 6 MA's), (Start: 12 @121475 has 7 MA's), (Start: 13 @121481 has 16 MA's),

Gene: Enygma_267 Start: 121264, Stop: 121395, Start Num: 11

Candidate Starts for Enygma_267:

(3, 121207), (6, 121237), (7, 121246), (10, 121258), (Start: 11 @121264 has 6 MA's), (Start: 12 @121276 has 7 MA's), (Start: 13 @121282 has 16 MA's), (18, 121381), (19, 121384),

Gene: Evy_238 Start: 121200, Stop: 121343, Start Num: 11

Candidate Starts for Evy_238:

(3, 121143), (6, 121173), (7, 121182), (9, 121191), (10, 121194), (Start: 11 @121200 has 6 MA's), (Start: 12 @121212 has 7 MA's), (Start: 13 @121218 has 16 MA's), (17, 121317),

Gene: Genie2_255 Start: 118377, Stop: 118493, Start Num: 13

Candidate Starts for Genie2_255:

(1, 118224), (6, 118332), (7, 118341), (8, 118347), (Start: 11 @118359 has 6 MA's), (Start: 12 @118371 has 7 MA's), (Start: 13 @118377 has 16 MA's), (14, 118392),

Gene: Gibbi_269 Start: 118972, Stop: 119091, Start Num: 12

Candidate Starts for Gibbi_269:

(3, 118903), (6, 118933), (7, 118942), (10, 118954), (Start: 11 @118960 has 6 MA's), (Start: 12 @118972 has 7 MA's), (Start: 13 @118978 has 16 MA's), (18, 119077),

Gene: IchabodCrane_253 Start: 118027, Stop: 118146, Start Num: 12

Candidate Starts for IchabodCrane_253:

(3, 117958), (6, 117988), (7, 117997), (10, 118009), (Start: 11 @118015 has 6 MA's), (Start: 12 @118027 has 7 MA's), (Start: 13 @118033 has 16 MA's), (18, 118132), (19, 118135),

Gene: JimJam_267 Start: 120408, Stop: 120527, Start Num: 12

Candidate Starts for JimJam_267:

(3, 120339), (6, 120369), (7, 120378), (10, 120390), (Start: 11 @120396 has 6 MA's), (Start: 12 @120408 has 7 MA's), (Start: 13 @120414 has 16 MA's), (18, 120513),

Gene: Jollison_256 Start: 118164, Stop: 118277, Start Num: 13

Candidate Starts for Jollison_256:

(3, 118089), (6, 118119), (7, 118128), (10, 118140), (Start: 11 @118146 has 6 MA's), (Start: 12 @118158 has 7 MA's), (Start: 13 @118164 has 16 MA's), (18, 118263),

Gene: KentuckyRacer_266 Start: 120329, Stop: 120442, Start Num: 13

Candidate Starts for KentuckyRacer_266:

(3, 120254), (6, 120284), (7, 120293), (10, 120305), (Start: 11 @120311 has 6 MA's), (Start: 12 @120323 has 7 MA's), (Start: 13 @120329 has 16 MA's), (18, 120428),

Gene: Leo04_251 Start: 121590, Stop: 121685, Start Num: 13

Candidate Starts for Leo04_251:

(3, 121515), (4, 121530), (7, 121554), (9, 121563), (10, 121566), (Start: 11 @121572 has 6 MA's), (Start: 12 @121584 has 7 MA's), (Start: 13 @121590 has 16 MA's),

Gene: Mildred21_263 Start: 120638, Stop: 120769, Start Num: 11

Candidate Starts for Mildred21_263:

(2, 120563), (3, 120581), (4, 120596), (5, 120608), (7, 120620), (8, 120626), (Start: 11 @120638 has 6 MA's), (Start: 13 @120656 has 16 MA's), (15, 120677), (16, 120728),

Gene: MindFlayer_252 Start: 117543, Stop: 117662, Start Num: 12

Candidate Starts for MindFlayer_252:

(3, 117474), (6, 117504), (7, 117513), (10, 117525), (Start: 11 @117531 has 6 MA's), (Start: 12 @117543 has 7 MA's), (Start: 13 @117549 has 16 MA's), (18, 117648),

Gene: PumpkinSpice_262 Start: 118770, Stop: 118883, Start Num: 13

Candidate Starts for PumpkinSpice_262:

(3, 118695), (6, 118725), (7, 118734), (10, 118746), (Start: 11 @118752 has 6 MA's), (Start: 12 @118764 has 7 MA's), (Start: 13 @118770 has 16 MA's), (18, 118869),

Gene: Quaran19_260 Start: 118671, Stop: 118784, Start Num: 13

Candidate Starts for Quaran19_260:

(3, 118596), (6, 118626), (7, 118635), (10, 118647), (Start: 11 @118653 has 6 MA's), (Start: 12 @118665 has 7 MA's), (Start: 13 @118671 has 16 MA's), (18, 118770),

Gene: SaltySpittoon_259 Start: 117753, Stop: 117866, Start Num: 13

Candidate Starts for SaltySpittoon_259:

(3, 117678), (6, 117708), (7, 117717), (10, 117729), (Start: 11 @117735 has 6 MA's), (Start: 12 @117747 has 7 MA's), (Start: 13 @117753 has 16 MA's), (18, 117852),

Gene: Scheme_253 Start: 122647, Stop: 122763, Start Num: 11

Candidate Starts for Scheme_253:

(3, 122590), (4, 122605), (7, 122629), (9, 122638), (10, 122641), (Start: 11 @122647 has 6 MA's), (Start: 12 @122659 has 7 MA's), (Start: 13 @122665 has 16 MA's),

Gene: Spelly_264 Start: 117682, Stop: 117795, Start Num: 13

Candidate Starts for Spelly_264:

(3, 117607), (6, 117637), (7, 117646), (10, 117658), (Start: 11 @117664 has 6 MA's), (Start: 12 @117676 has 7 MA's), (Start: 13 @117682 has 16 MA's), (18, 117781),

Gene: Spilled_267 Start: 119346, Stop: 119459, Start Num: 13

Candidate Starts for Spilled_267:

(3, 119271), (6, 119301), (7, 119310), (10, 119322), (Start: 11 @119328 has 6 MA's), (Start: 12 @119340 has 7 MA's), (Start: 13 @119346 has 16 MA's), (18, 119445),

Gene: Stanimal_255 Start: 118732, Stop: 118854, Start Num: 12

Candidate Starts for Stanimal_255:

(1, 118585), (6, 118693), (7, 118702), (8, 118708), (Start: 11 @118720 has 6 MA's), (Start: 12 @118732 has 7 MA's), (Start: 13 @118738 has 16 MA's), (14, 118753),

Gene: Starbow_256 Start: 117720, Stop: 117839, Start Num: 12

Candidate Starts for Starbow_256:

(3, 117651), (6, 117681), (7, 117690), (10, 117702), (Start: 11 @117708 has 6 MA's), (Start: 12 @117720 has 7 MA's), (Start: 13 @117726 has 16 MA's), (18, 117825),

Gene: Sushi23_250 Start: 122296, Stop: 122409, Start Num: 11

Candidate Starts for Sushi23_250:

(3, 122239), (4, 122254), (7, 122278), (9, 122287), (10, 122290), (Start: 11 @122296 has 6 MA's), (Start: 12 @122308 has 7 MA's), (Start: 13 @122314 has 16 MA's),

Gene: TomSawyer_264 Start: 120639, Stop: 120770, Start Num: 11

Candidate Starts for TomSawyer_264:

(3, 120582), (6, 120612), (7, 120621), (10, 120633), (Start: 11 @120639 has 6 MA's), (Start: 12 @120651 has 7 MA's), (Start: 13 @120657 has 16 MA's), (18, 120756),

Gene: Warpy_252 Start: 121027, Stop: 121152, Start Num: 13

Candidate Starts for Warpy_252:

(3, 120952), (6, 120982), (7, 120991), (9, 121000), (10, 121003), (Start: 11 @121009 has 6 MA's), (Start: 12 @121021 has 7 MA's), (Start: 13 @121027 has 16 MA's), (17, 121126),

Gene: Watermoore_247 Start: 122050, Stop: 122163, Start Num: 11

Candidate Starts for Watermoore_247:

(3, 121993), (4, 122008), (6, 122023), (7, 122032), (9, 122041), (10, 122044), (Start: 11 @122050 has 6 MA's), (Start: 12 @122062 has 7 MA's), (Start: 13 @122068 has 16 MA's),

Gene: Wipeout_251 Start: 119609, Stop: 119722, Start Num: 13

Candidate Starts for Wipeout_251:

(3, 119534), (6, 119564), (7, 119573), (10, 119585), (Start: 11 @119591 has 6 MA's), (Start: 12 @119603 has 7 MA's), (Start: 13 @119609 has 16 MA's), (18, 119708),

Gene: Yaboi_261 Start: 118301, Stop: 118417, Start Num: 13

Candidate Starts for Yaboi_261:

(1, 118148), (6, 118256), (7, 118265), (8, 118271), (Start: 11 @118283 has 6 MA's), (Start: 12 @118295 has 7 MA's), (Start: 13 @118301 has 16 MA's), (14, 118316),