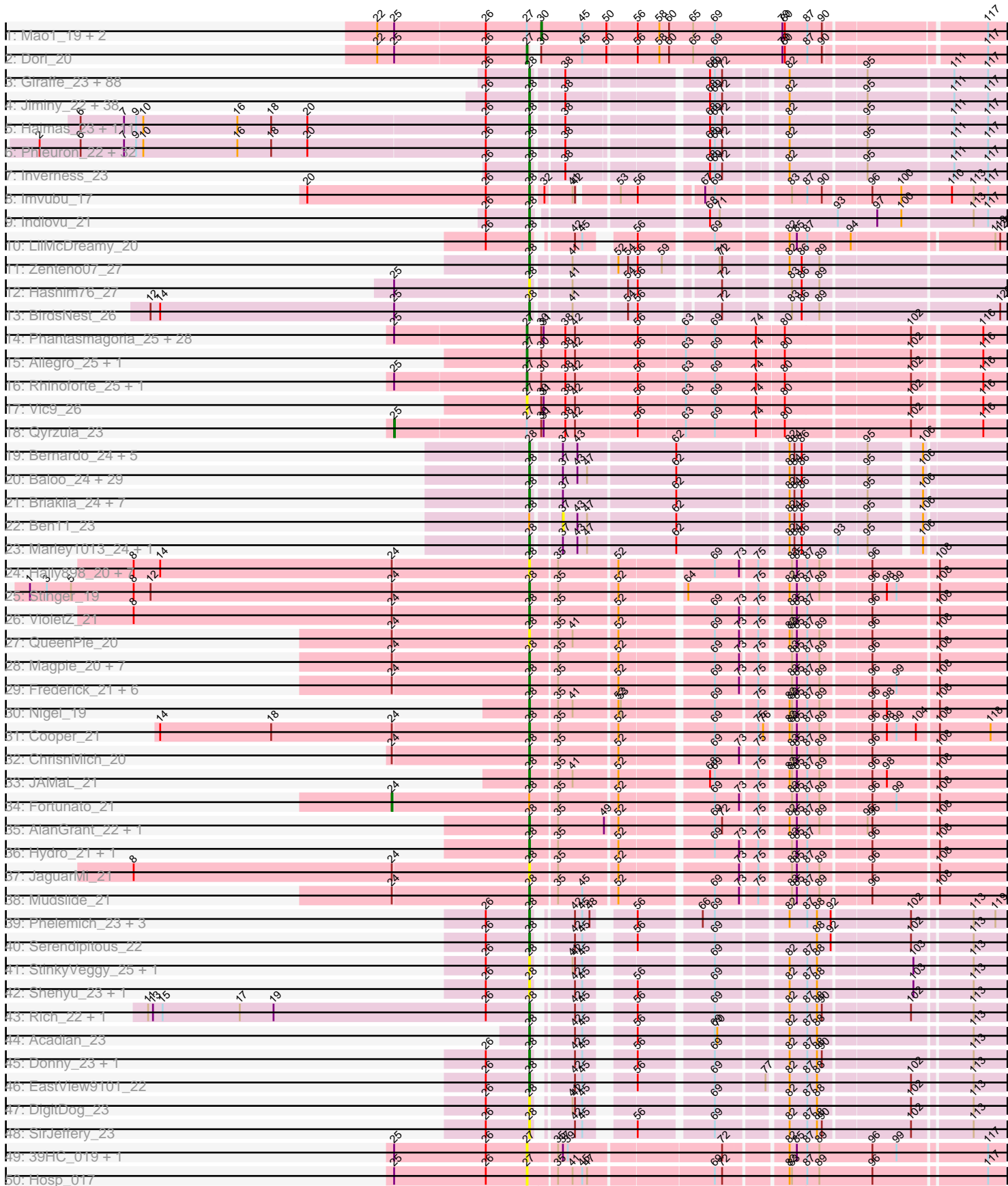
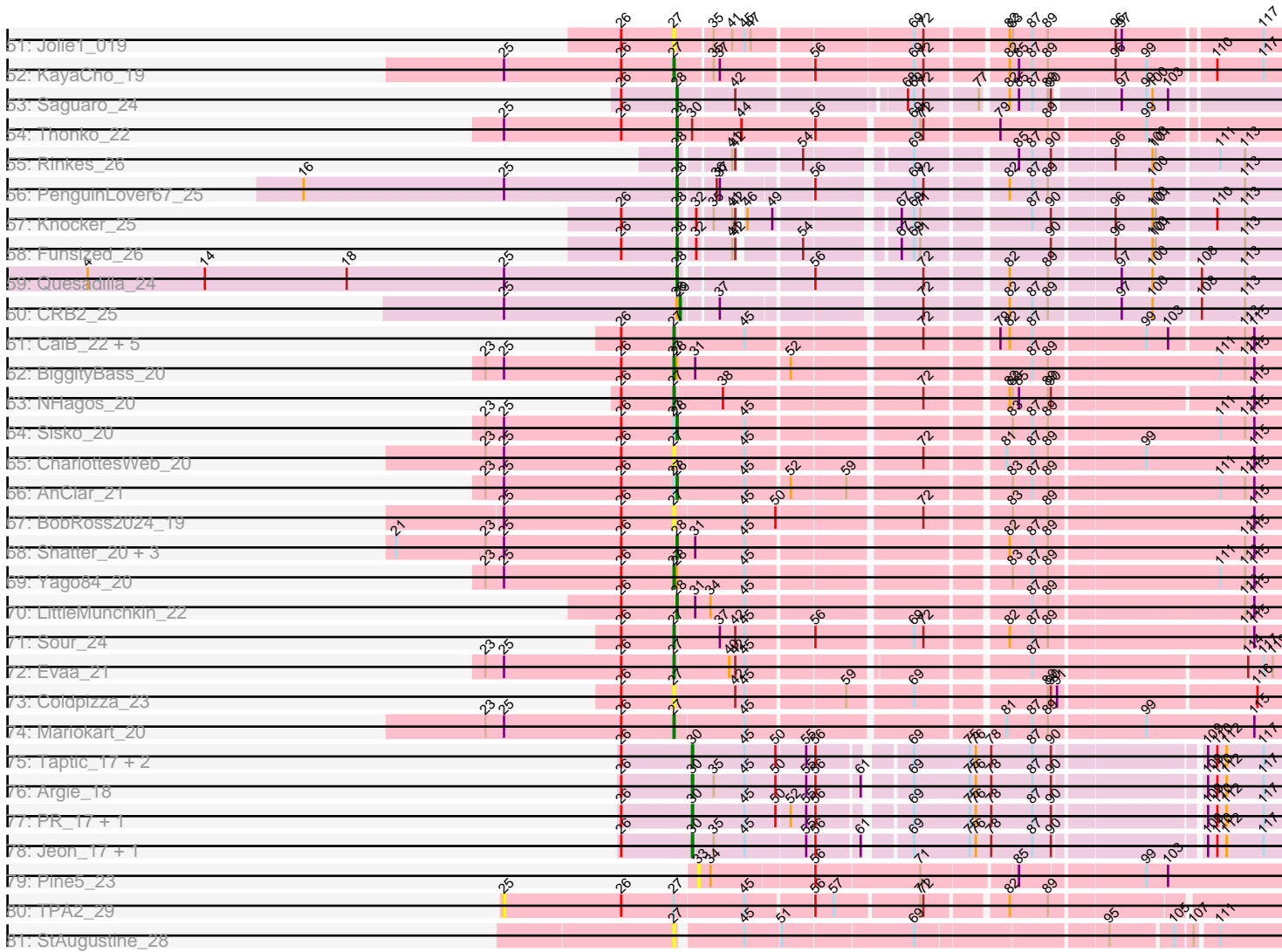


Pham 189338



Pham 189338



Note: Tracks are now grouped by subcluster and scaled. Switching in subcluster is indicated by changes in track color. Track scale is now set by default to display the region 30 bp upstream of start 1 to 30 bp downstream of the last possible start. If this default region is judged to be packed too tightly with annotated starts, the track will be further scaled to only show that region of the ORF with annotated starts. This action will be indicated by adding "Zoomed" to the title. For starts, yellow indicates the location of called starts comprised solely of Glimmer/GeneMark auto-annotations, green indicates the location of called starts with at least 1 manual gene annotation.

Pham 189338 Report

This analysis was run 11/02/24 on database version 579.

Pham number 189338 has 466 members, 48 are drafts.

Phages represented in each track:

- Track 1 : Mao1_19, Mask_20, Sejanus_20
- Track 2 : Dori_20
- Track 3 : Giraffe_23, Serpentine_0023, Banjo_22, Nacho_0023, Hetaeria_23, Maru_22, Valjean_23, Olive_23, Gyarad_0023, Zelda_23, EmpTee_23, Mulan_22, Altwerkus_22, Basato_24, Frankicide_23, Cher_22, KLucky39_23, Pipsqueak_23, Gareth_22, Antonia_22, Megamind20_23, Manad_22, Simielle_22, Mana_22, Daffy_23, Freya_22, Andre_23, Scoot17C_23, ThreeOh3D2_23, Mecca_22, LostAndPhound_22, HighStump_22, Bishoperium_22, Serendipity_23, Orion_23, CheetO_23, Emiris_23, Spartan300_23, Cobra_23, Dingo_23, Bluephacebaby_22, KlimbOn_23, PinheadLarry_23, Lopsy_22, Grand2040_22, Chorkpop_23, Solosis_22, Roliet_23, Harvey_23, Telesworld_22, Childish_22, QueenBeane_23, MiniBoss_23, Held_23, Nyala_22, Colbert_23, Phareon_23, AbsoluteMadLad_22, Kahve_22, UncleHowie_23, Fang_23, LeiMonet_23, Waterdiva_23, DonSanchon_22, HSavage_23, Morgushi_23, Dione_22, UAch1_23, Samaymay_23, True_22, AltPhacts_23, Potter_22, Piglet_0022, CamL_23, HenryJackson_22, FugateOSU_22, Vaishali24_22, Vaticameos_23, Robyn_22, FriarPreacher_23, Tooj_23, RedMaple_22, Suffolk_23, Aelin_22, Tomlarah_23, Vortex_23, PG1_23, Chah_24, Vivaldi_23
- Track 4 : Jiminy_22, Mikota_23, Chunky_23, DuchessDung_21, OliverWalter_23, KingVeVeVe_23, Usavi_23, MrPhizzler_22, Prickles_23, Oline_22, Maskar_22, DirtJuice_23, Boehler_23, Thunderbird_22, Hocus_22, Doddsville_23, SDcharge11_23, Duggie_22, JakeO_22, JDog_22, Ashraf_22, ImtiyazSitla_22, Gwilliam_23, ProfessorX_23, Crownjwl_23, DaddyDaniels_23, Fozzie_22, Horchata_23, Newman_23, Eremos_23, Apizium_22, Carthage_21, Sheila_23, Daka_23, Soto_23, Roscoe_24, Struggle_22, BlueHusk_23, Jiraiya_23
- Track 5 : Haimas_23, Hamish_23, Iridoclysis_23, Pops_23, Adriana_23, Nicole21_23, Kimbrough_23, DelRivs_22, Lumine_22, Oosterbaan_23, Selr12_23, Burr_22, Inchworm_23, Matalotodo_23, SilverBell_23, Murdoc_23, Eugenia_23, Keitherie_23, Pherdinand_23, LuckyMarjie_22, Orwigg_23, Thora_23, Derpp_22, TyrionL_22, Buckeye_23, OSmaximus_23, Skippy_23, Toni_22, Fringe_23, Kwadwo_22, Squid_23, Olak_22, Cornobble_22, ABU_23, Numberten_23, BlackStallion_23, Windsor_22, Mcshane_22, FluffyNinja_23, Schadenfreude_22, MitKao_23, Scrick_23, Haleema_22, Orfeu_22, Swish_23, Mutante_22, Lulumae_22, Roy17_23, Sigman_23, Lulwa_23, Megatron_23, LeeLot_23, Xavier_22, PhrodoBaggins_22, IsaacEli_23, Beaglebox_22, Jillium_22, Sophia_22, Surely_23, Mosaic_22, Slatt_23, Virapocalypse_23, Kikipoo_23, Charles1_23, SassyCat97_22, Hertubise_23, Omniscient_23, Soile_23, Ricotta_22, Badfish_23, Lego3393_23,

JangoPhett_23, DoesntMatter_23, YouGoGlencoco_23, Quisquiliae_23,
 Cosmolli16_22, ShiVal_23, LemonSlice_23, Legolas_22, Cannibal_23, Gophee_23,
 TallGrassMM_23, Dice_22, LasagnaCat_23, JacAttac_23, MRabcd_22, Riggan_23,
 Puhltonio_23, Lasso_23, Mesh1_23, Katniss_23, Timmi_22, Squiggle_23,
 TomBombadil_23, Phipps_23, Kloppinator_23, Craff_23, PhatCats2014_23,
 Zaider_24, Morty_23, Phunky_23, Phamished_23, Plmatters_23, Podrick_23,
 Vista_23, CampRoach_23, Pacifista_22, Chaelin_22, Anderson_23,
 Labeouficaum_22, Placalicious_22, Yoshand_23
 • Track 6 : Phleuron_22, Rimu_23, BatteryCK_22, Phergie_22, Magic8_23, Zonia_23,
 Pinkman_22, Trypo_23, Veritas_22, Coletti_22, Swiphy_24, Etaye_23,
 MichaelPhcott_22, Kailash_23, Chute_22, MelsMeow_22, PhrankReynolds_22,
 Virgeve_22, Durga_23, PhenghisKhan_22, GeneCoco_23, Dati_23, Longacauda_22,
 Wallhey_22, Schueller_23, Kwksand96_22, Brilliant_23, Hartsy_23, Weher20_23,
 Mag7_22, PhatLouie_23, Melc17_23, CharlieGBrown_22
 • Track 7 : Inverness_23
 • Track 8 : Imvubu_17
 • Track 9 : Indlovu_21
 • Track 10 : LilMcDreamy_20
 • Track 11 : Zenteno07_27
 • Track 12 : Hashim76_27
 • Track 13 : BirdsNest_26
 • Track 14 : Phantasmagoria_25, Sabella_25, LizLemon_25, Kheth_25, Faze9_25,
 Godines_25, Brownie5_25, West99_25, Coffee_25, TA17A_25, MasterPo_25,
 Calamitous_25, Bananafish_25, Opia_25, Tinciduntolum_26, Tres_25, Lars_25,
 Eaglehorse_25, Boyle_25, Arbiter_25, Holeinone_25, Hedgerow_25, Rosebush_25,
 Glass_25, Kaleb_25, Ares_25, Lephleur_25, ItsyBitsy1_25, FrenchFry_25
 • Track 15 : Allegro_25, Laurie_25
 • Track 16 : Rhinoforte_25, Blocker23_25
 • Track 17 : Vic9_26
 • Track 18 : Qyrzula_23
 • Track 19 : Bernardo_24, GlenHope_25, Pipefish_24, Gadget_25, Gervas_24,
 RomaT_24
 • Track 20 : Baloo_24, Phlyer_24, Phayeta_24, Jackstina_22, Yinz_24,
 MmasiCarm_24, Phaedrus_22, Audrey_24, ChaChing_24, Athena_25, Neos5_24,
 Nozo_24, Corofin_24, Tydolla_24, SlippinJimmy_24, HarveySr_24, Devonte_24,
 Heathcliff_24, Philly_23, Daisy_24, Kronus_23, Halfpint_23, Chandler_24,
 Abinghost_24, Obutu_24, Mortcellus_23, Rita1961_24, OrangeOswald_24,
 Compostia_25, Kamiyu_24
 • Track 21 : Briakila_24, LestyG_24, Yahalom_24, RagingRooster_24, Akoma_24,
 Deenasa_24, SynergyX_24, Casbah_23
 • Track 22 : Ben11_23
 • Track 23 : Marley1013_24, Morty007_24
 • Track 24 : Hally898_20, Antihero_20, Ahwei_20, Poster_20, Lambano_20,
 Epah_20, GinPorsche_20, Nanao_20
 • Track 25 : Stinger_19
 • Track 26 : VioletZ_21
 • Track 27 : QueenPie_20
 • Track 28 : Magpie_20, Hangman_21, BrownCNA_22, Mithril_21, Xincheng_20,
 Waleliano_21, Zemanar_22, Heath_20
 • Track 29 : Frederick_21, RawrgerThat_21, Fanaw_20, Prince_21, Apex_21,
 BobbyK_21, Austelle_22
 • Track 30 : Nigel_19
 • Track 31 : Cooper_21

- Track 32 : ChrisMich_20
- Track 33 : JAMaL_21
- Track 34 : Fortunato_21
- Track 35 : AlanGrant_22, Vincenzo_22
- Track 36 : Hydro_21, Lolalove_21
- Track 37 : JaguarMi_21
- Track 38 : Mudslide_21
- Track 39 : Phelemich_23, Mysterious_24, Reprobate_23, Nehemiah_22
- Track 40 : Serendipitous_22
- Track 41 : StinkyVeggy_25, KarasumaRum_25
- Track 42 : Shenyu_23, Nangang_23
- Track 43 : Rich_22, Bae_22
- Track 44 : Acadian_23
- Track 45 : Donny_23, Suigeneris_23
- Track 46 : EastView9101_22
- Track 47 : DigitDog_23
- Track 48 : SirJeffery_23
- Track 49 : 39HC_019, 40BC_019
- Track 50 : Hosp_017
- Track 51 : Jolie1_019
- Track 52 : KayaCho_19
- Track 53 : Saguaro_24
- Track 54 : Thonko_22
- Track 55 : Rinkes_26
- Track 56 : PenguinLover67_25
- Track 57 : Knocker_25
- Track 58 : Funsized_26
- Track 59 : Quesadilla_24
- Track 60 : CRB2_25
- Track 61 : CaiB_22, CloverMinnie_22, Wooper_22, MakoManhole_22, MossRose_22, AnarQue_22
- Track 62 : BiggityBass_20
- Track 63 : NHagos_20
- Track 64 : Sisko_20
- Track 65 : CharlottesWeb_20
- Track 66 : AnClar_21
- Track 67 : BobRoss2024_19
- Track 68 : Shatter_20, Axumite_20, Fresco_20, Ligma_20
- Track 69 : Yago84_20
- Track 70 : LittleMunchkin_22
- Track 71 : Sour_24
- Track 72 : Evaa_21
- Track 73 : Coldpizza_23
- Track 74 : Mariokart_20
- Track 75 : Taptic_17, Megabear_17, Cepens_17
- Track 76 : Argie_18
- Track 77 : PR_17, D12_17
- Track 78 : Jeon_17, GodPhather_18
- Track 79 : Pine5_23
- Track 80 : TPA2_29
- Track 81 : StAugustine_28

Summary of Final Annotations (See graph section above for start numbers):

The start number called the most often in the published annotations is 28, it was called in 359 of the 418 non-draft genes in the pham.

Genes that call this "Most Annotated" start:

- ABU_23, Abinghost_24, AbsoluteMadLad_22, Acadian_23, Adriana_23, Aelin_22, Ahwei_20, Akoma_24, AlanGrant_22, AltPhacts_23, Altwerkus_22, AnClar_21, Anderson_23, Andre_23, Antihero_20, Antonia_22, Apex_21, Apizium_22, Ashraf_22, Athena_25, Audrey_24, Austelle_22, Axumite_20, Badfish_23, Bae_22, Baloo_24, Banjo_22, Basato_24, BatteryCK_22, Beaglebox_22, Bernardo_24, BirdsNest_26, Bishoperium_22, BlackStallion_23, BlueHusk_23, Bluephacebaby_22, BobbyK_21, Boehler_23, Briakila_24, Brilliant_23, BrownCNA_22, Buckeye_23, Burr_22, CamL_23, CampRoach_23, Cannibal_23, Carthage_21, Casbah_23, ChaChing_24, Chaelin_22, Chah_24, Chandler_24, Charles1_23, CharlieGBrown_22, CheetO_23, Cher_22, Childish_22, Chorkpop_23, ChrisnMich_20, Chunky_23, Chute_22, Cobra_23, Colbert_23, Coletti_22, Compostia_25, Cooper_21, Cornobble_22, Corofin_24, Cosmolli16_22, Craff_23, Crownjwl_23, DaddyDaniels_23, Daffy_23, Daisy_24, Daka_23, Dati_23, Deenasa_24, DelRivs_22, Derpp_22, Devonte_24, Dice_22, DigitDog_23, Dingo_23, Dione_22, DirtJuice_23, Doddsville_23, DoesntMatter_23, DonSanchon_22, Donny_23, DuchessDung_21, Duggie_22, Durga_23, EastView9101_22, Emiris_23, EmpTee_23, Epah_20, Eremos_23, Etaye_23, Eugenia_23, Fanaw_20, Fang_23, FluffyNinja_23, Fozzie_22, Frankicide_23, Frederick_21, Fresco_20, Freya_22, FriarPreacher_23, Fringe_23, FugateOSU_22, Funsized_26, Gadget_25, Gareth_22, GeneCoco_23, Gervas_24, GinPorsche_20, Giraffe_23, GlenHope_25, Gophee_23, Grand2040_22, Gwilliam_23, Gyarad_0023, HSavage_23, Haimas_23, Haleema_22, Halfpint_23, Hally898_20, Hamish_23, Hangman_21, Hartsy_23, HarveySr_24, Harvey_23, Hashim76_27, Heath_20, Heathcliff_24, Held_23, HenryJackson_22, Hertubise_23, Hetaeria_23, HighStump_22, Hocus_22, Horchata_23, Hydro_21, ImtiyazSitla_22, Imvubu_17, Inchworm_23, Indlovu_21, Inverness_23, Iridoclysis_23, IsaacEli_23, JAMaL_21, JDog_22, JacAttac_23, Jackstina_22, JaguarMi_21, JakeO_22, JangoPhett_23, Jillium_22, Jiminy_22, Jiraiya_23, KLucky39_23, Kahve_22, Kailash_23, Kamiyu_24, KarasumaRum_25, Katniss_23, Keitherie_23, Kikipoo_23, Kimbrough_23, KingVeVeVe_23, KlimbOn_23, Kloppinator_23, Knocker_25, Kronus_23, Kwadwo_22, Kwksand96_22, Labeouficaum_22, Lambano_20, LasagnaCat_23, Lasso_23, LeeLot_23, Lego3393_23, Legolas_22, LeiMonet_23, LemonSlice_23, LestyG_24, Ligma_20, LilMcDreamy_20, LittleMunchkin_22, Lolalove_21, Longacauda_22, Lopsy_22, LostAndPhound_22, LuckyMarjie_22, Lulumae_22, Lulwa_23, Lumine_22, MRabcd_22, Mag7_22, Magic8_23, Magpie_20, Mana_22, Manad_22, Marley1013_24, Maru_22, Maskar_22, Matalotodo_23, Mcshane_22, Mecca_22, Megamind20_23, Megatron_23, Melc17_23, MelsMeow_22, Mesh1_23, MichaelPhcott_22, Mikota_23, MiniBoss_23, MitKao_23, Mithril_21, MmasiCarm_24, Morgushi_23, Mortcellus_23, Morty007_24, Morty_23, Mosaic_22, MrPhizzler_22, Mudslide_21, Mulan_22, Murdoc_23, Mutante_22, Mysterious_24, Nacho_0023, Nanao_20, Nangang_23, Nehemiah_22, Neos5_24, Newman_23, Nicole21_23, Nigel_19, Nozo_24, Numberten_23, Nyala_22, OSmaximus_23, Obutu_24, Olak_22, Oline_22, Olive_23, OliverWalter_23, Omniscient_23, Oosterbaan_23, OrangeOswald_24, Orfeu_22, Orion_23, Orwigg_23, PG1_23, Pacifista_22, PenguinLover67_25, Phaedrus_22, Phamished_23, Phareon_23, PhatCats2014_23, PhatLouie_23, Phayeta_24, Phelemich_23, PhenghisKhan_22, Pherdinand_23, Phergie_22, Philly_23,

Phipps_23, Phleuron_22, Phlyer_24, PhrankReynolds_22, PhrodoBaggins_22, Phunky_23, Piglet_0022, PinheadLarry_23, Pinkman_22, Pipefish_24, Pipsqueak_23, Placalicious_22, Plmatters_23, Podrick_23, Pops_23, Poster_20, Potter_22, Prickles_23, Prince_21, ProfessorX_23, Puhltonio_23, QueenBeane_23, QueenPie_20, Quesadilla_24, Quisquilliae_23, RagingRooster_24, RawrgerThat_21, RedMaple_22, Reprobate_23, Rich_22, Ricotta_22, Riggan_23, Rimu_23, Rinkes_26, Rita1961_24, Robyn_22, Roliet_23, RomaT_24, Roscoe_24, Roy17_23, SDcharge11_23, Saguario_24, Samaymay_23, SassyCat97_22, Schadenfreude_22, Schueller_23, Scoot17C_23, Scrick_23, Selr12_23, Serendipitous_22, Serendipity_23, Serpentine_0023, Shatter_20, Sheila_23, Shenyu_23, ShiVal_23, Sigman_23, SilverBell_23, Simielle_22, SirJeffery_23, Sisko_20, Skippy_23, Slatt_23, SlippinJimmy_24, Soile_23, Solosis_22, Sophia_22, Soto_23, Spartan300_23, Squid_23, Squiggle_23, Stinger_19, StinkyVeggy_25, Struggle_22, Suffolk_23, Suigeneris_23, Surely_23, Swiphy_24, Swish_23, SynergyX_24, TallGrassMM_23, Telesworld_22, Thonko_22, Thora_23, ThreeOh3D2_23, Thunderbird_22, Timmi_22, TomBombadil_23, Tomlarah_23, Toni_22, Tooj_23, True_22, Trypo_23, Tydolla_24, TyrionL_22, UAch1_23, UncleHowie_23, Usavi_23, Vaishali24_22, Valjean_23, Vaticameos_23, Veritas_22, Vincenzo_22, VioletZ_21, Virapocalypse_23, Virgeve_22, Vista_23, Vivaldi_23, Vortex_23, Waleliano_21, Wallhey_22, Waterdiva_23, Weher20_23, Windsor_22, Xavier_22, Xincheng_20, Yahalom_24, Yinz_24, Yoshand_23, YouGoGlencoco_23, Zaider_24, Zelda_23, Zemanar_22, Zenteno07_27, Zonia_23,

Genes that have the "Most Annotated" start but do not call it:

- Ben11_23, BiggityBass_20, CRB2_25, Fortunato_21, Yago84_20,

Genes that do not have the "Most Annotated" start:

- 39HC_019, 40BC_019, Allegro_25, AnarQue_22, Arbiter_25, Ares_25, Argie_18, Bananafish_25, Blocker23_25, BobRoss2024_19, Boyle_25, Brownie5_25, CaiB_22, Calamitous_25, Cepens_17, CharlottesWeb_20, CloverMinnie_22, Coffee_25, Coldpizza_23, D12_17, Dori_20, Eaglehorse_25, Evaa_21, Faze9_25, FrenchFry_25, Glass_25, GodPhather_18, Godines_25, Hedgerow_25, Holeinone_25, Hosp_017, ItsyBitsy1_25, Jeon_17, Jolie1_019, Kaleb_25, KayaCho_19, Kheth_25, Lars_25, Laurie_25, Lephleur_25, LizLemon_25, MakoManhole_22, Mao1_19, Mariokart_20, Mask_20, MasterPo_25, Megabear_17, MossRose_22, NHagos_20, Opia_25, PR_17, Phantasmagoria_25, Pine5_23, Qyrzula_23, Rhinoforte_25, Rosebush_25, Sabella_25, Sejanus_20, Sour_24, StAugustine_28, TA17A_25, TPA2_29, Taptic_17, Tinciduntolum_26, Tres_25, Vic9_26, West99_25, Wooper_22,

Summary by start number:

Start 24:

- Found in 31 of 466 (6.7%) of genes in pham
- Manual Annotations of this start: 1 of 418
- Called 3.2% of time when present
- Phage (with cluster) where this start called: Fortunato_21 (B4),

Start 25:

- Found in 59 of 466 (12.7%) of genes in pham
- Manual Annotations of this start: 1 of 418
- Called 3.4% of time when present
- Phage (with cluster) where this start called: Qyrzula_23 (B2), TPA2_29 (singleton),

Start 27:

- Found in 63 of 466 (13.5%) of genes in pham
- Manual Annotations of this start: 45 of 418
- Called 88.9% of time when present
- Phage (with cluster) where this start called: 39HC_019 (B6), 40BC_019 (B6), Allegro_25 (B2), AnarQue_22 (DR), Arbiter_25 (B2), Ares_25 (B2), Bananafish_25 (B2), BiggityBass_20 (DR), Blocker23_25 (B2), BobRoss2024_19 (DR), Boyle_25 (B2), Brownie5_25 (B2), CaiB_22 (DR), Calamitous_25 (B2), CharlottesWeb_20 (DR), CloverMinnie_22 (DR), Coffee_25 (B2), Coldpizza_23 (DR), Dori_20 (AD), Eaglehorse_25 (B2), Evaa_21 (DR), Faze9_25 (B2), FrenchFry_25 (B2), Glass_25 (B2), Godines_25 (B2), Hedgerow_25 (B2), Holeinone_25 (B2), Hosp_017 (B6), ItsyBitsy1_25 (B2), Jolie1_019 (B6), Kaleb_25 (B2), KayaCho_19 (B6), Kheth_25 (B2), Lars_25 (B2), Laurie_25 (B2), Lephleur_25 (B2), LizLemon_25 (B2), MakoManhole_22 (DR), Mariokart_20 (DR), MasterPo_25 (B2), MossRose_22 (DR), NHagos_20 (DR), Opia_25 (B2), Phantasmagoria_25 (B2), Rhinoforte_25 (B2), Rosebush_25 (B2), Sabella_25 (B2), Sour_24 (DR), StAugustine_28 (singleton), TA17A_25 (B2), Tinciduntolum_26 (B2), Tres_25 (B2), Vic9_26 (B2), West99_25 (B2), Wooper_22 (DR), Yago84_20 (DR),

Start 28:

- Found in 398 of 466 (85.4%) of genes in pham
- Manual Annotations of this start: 359 of 418
- Called 98.7% of time when present
- Phage (with cluster) where this start called: ABU_23 (B1), Abinghost_24 (B3), AbsoluteMadLad_22 (B1), Acadian_23 (B5), Adriana_23 (B1), Aelin_22 (B1), Ahwei_20 (B4), Akoma_24 (B3), AlanGrant_22 (B4), AltPhacts_23 (B1), Altwerkus_22 (B1), AnClar_21 (DR), Anderson_23 (B1), Andre_23 (B1), Antihero_20 (B4), Antonia_22 (B1), Apex_21 (B4), Apizium_22 (B1), Ashraf_22 (B1), Athena_25 (B3), Audrey_24 (B3), Austelle_22 (B4), Axumite_20 (DR), Badfish_23 (B1), Bae_22 (B5), Baloo_24 (B3), Banjo_22 (B1), Basato_24 (B1), BatteryCK_22 (B1), Beaglebox_22 (B1), Bernardo_24 (B3), BirdsNest_26 (B13), Bishoperium_22 (B1), BlackStallion_23 (B1), BlueHusk_23 (B1), Bluephacebaby_22 (B1), BobbyK_21 (B4), Boehler_23 (B1), Briakila_24 (B3), Brilliant_23 (B1), BrownCNA_22 (B4), Buckeye_23 (B1), Burr_22 (B1), CamL_23 (B1), CampRoach_23 (B1), Cannibal_23 (B1), Carthage_21 (B1), Casbah_23 (B3), ChaChing_24 (B3), Chaelin_22 (B1), Chah_24 (B1), Chandler_24 (B3), Charles1_23 (B1), CharlieGBrown_22 (B1), CheetO_23 (B1), Cher_22 (B1), Childish_22 (B1), Chorkpop_23 (B1), ChrisnMich_20 (B4), Chunky_23 (B1), Chute_22 (B1), Cobra_23 (B1), Colbert_23 (B1), Coletti_22 (B1), Compostia_25 (B3), Cooper_21 (B4), Cornobble_22 (B1), Corofin_24 (B3), Cosmolli16_22 (B1), Craff_23 (B1), Crownjwl_23 (B1), DaddyDaniels_23 (B1), Daffy_23 (B1), Daisy_24 (B3), Daka_23 (B1), Dati_23 (B1), Deenasa_24 (B3), DelRivs_22 (B1), Derpp_22 (B1), Devonte_24 (B3), Dice_22 (B1), DigitDog_23 (B5), Dingo_23 (B1), Dione_22 (B1), DirtJuice_23 (B1), Doddsville_23 (B1), DoesntMatter_23 (B1), DonSanchon_22 (B1), Donny_23 (B5), DuchessDung_21 (B1), Duggie_22 (B1), Durga_23 (B1), EastView9101_22 (B5), Emiris_23 (B1), EmpTee_23 (B1), Epah_20 (B4), Eremos_23 (B1), Etaye_23 (B1), Eugenia_23 (B1), Fanaw_20 (B4), Fang_23 (B1), FluffyNinja_23 (B1), Fozzie_22 (B1), Frankicide_23 (B1), Frederick_21 (B4), Fresco_20 (DR), Freya_22 (B1), FriarPreacher_23 (B1), Fringe_23 (B1), FugateOSU_22 (B1), Funsized_26 (B9), Gadget_25 (B3), Gareth_22 (B1), GeneCoco_23 (B1), Gervas_24 (B3), GinPorsche_20 (B4), Giraffe_23 (B1), GlenHope_25 (B3), Gophee_23 (B1), Grand2040_22 (B1), Gwilliam_23 (B1), Gyarad_0023 (B1), HSavage_23 (B1), Haimas_23 (B1), Haleema_22 (B1),

Halfpint_23 (B3), Hally898_20 (B4), Hamish_23 (B1), Hangman_21 (B4), Hartsy_23 (B1), HarveySr_24 (B3), Harvey_23 (B1), Hashim76_27 (B13), Heath_20 (B4), Heathcliff_24 (B3), Held_23 (B1), HenryJackson_22 (B1), Hertubise_23 (B1), Hetaeria_23 (B1), HighStump_22 (B1), Hocus_22 (B1), Horchata_23 (B1), Hydro_21 (B4), ImtiyazSitla_22 (B1), Imvubu_17 (B10), Inchworm_23 (B1), Indlovu_21 (B11), Inverness_23 (B1), Iridoclysis_23 (B1), IsaacEli_23 (B1), JAMaL_21 (B4), JDog_22 (B1), JacAttac_23 (B1), Jackstina_22 (B3), JaguarMi_21 (B4), JakeO_22 (B1), JangoPhett_23 (B1), Jillium_22 (B1), Jiminy_22 (B1), Jiraiya_23 (B1), KLucky39_23 (B1), Kahve_22 (B1), Kailash_23 (B1), Kamiyu_24 (B3), KarasumaRum_25 (B5), Katniss_23 (B1), Keitherie_23 (B1), Kikipoo_23 (B1), Kimbrough_23 (B1), KingVeVeVe_23 (B1), KlimbOn_23 (B1), Kloppinator_23 (B1), Knocker_25 (B9), Kronus_23 (B3), Kwadwo_22 (B1), Kwksand96_22 (B1), Labeouficaum_22 (B1), Lambano_20 (B4), LasagnaCat_23 (B1), Lasso_23 (B1), LeeLot_23 (B1), Lego3393_23 (B1), Legolas_22 (B1), LeiMonet_23 (B1), LemonSlice_23 (B1), LestyG_24 (B3), Ligma_20 (DR), LilMcDreamy_20 (B12), LittleMunchkin_22 (DR), Lolalove_21 (B4), Longacauda_22 (B1), Lopsy_22 (B1), LostAndPhound_22 (B1), LuckyMarjie_22 (B1), Lulumae_22 (B1), Lulwa_23 (B1), Lumine_22 (B1), MRabcd_22 (B1), Mag7_22 (B1), Magic8_23 (B1), Magpie_20 (B4), Mana_22 (B1), Manad_22 (B1), Marley1013_24 (B3), Maru_22 (B1), Maskar_22 (B1), Matalotodo_23 (B1), Mcshane_22 (B1), Mecca_22 (B1), Megamind20_23 (B1), Megatron_23 (B1), Melc17_23 (B1), MelsMeow_22 (B1), Mesh1_23 (B1), MichaelPhcott_22 (B1), Mikota_23 (B1), MiniBoss_23 (B1), MitKao_23 (B1), Mithril_21 (B4), MmasiCarm_24 (B3), Morgushi_23 (B1), Mortcellus_23 (B3), Morty007_24 (B3), Morty_23 (B1), Mosaic_22 (B1), MrPhizzler_22 (B1), Mudslide_21 (B4), Mulan_22 (B1), Murdoc_23 (B1), Mutante_22 (B1), Mysterious_24 (B5), Nacho_0023 (B1), Nanao_20 (B4), Nangang_23 (B5), Nehemiah_22 (B5), Neos5_24 (B3), Newman_23 (B1), Nicole21_23 (B1), Nigel_19 (B4), Nozo_24 (B3), Numberten_23 (B1), Nyala_22 (B1), OSmaximus_23 (B1), Obutu_24 (B3), Olak_22 (B1), Oline_22 (B1), Olive_23 (B1), OliverWalter_23 (B1), Omniscient_23 (B1), Oosterbaan_23 (B1), OrangeOswald_24 (B3), Orfeu_22 (B1), Orion_23 (B1), Orwigg_23 (B1), PG1_23 (B1), Pacifista_22 (B1), PenguinLover67_25 (B9), Phaedrus_22 (B3), Phamished_23 (B1), Phareon_23 (B1), PhatCats2014_23 (B1), PhatLouie_23 (B1), Phayeta_24 (B3), Phelemich_23 (B5), PhenghisKhan_22 (B1), Pherdinand_23 (B1), Phergie_22 (B1), Philly_23 (B3), Phipps_23 (B1), Phleuron_22 (B1), Phlyer_24 (B3), PhrankReynolds_22 (B1), PhrodoBaggins_22 (B1), Phunky_23 (B1), Piglet_0022 (B1), PinheadLarry_23 (B1), Pinkman_22 (B1), Pipefish_24 (B3), Pipsqueak_23 (B1), Placalicious_22 (B1), Plmatters_23 (B1), Podrick_23 (B1), Pops_23 (B1), Poster_20 (B4), Potter_22 (B1), Prickles_23 (B1), Prince_21 (B4), ProfessorX_23 (B1), Puhltonio_23 (B1), QueenBeane_23 (B1), QueenPie_20 (B4), Quesadilla_24 (B9), Quisquiliae_23 (B1), RagingRooster_24 (B3), RawrgerThat_21 (B4), RedMaple_22 (B1), Reprobate_23 (B5), Rich_22 (B5), Ricotta_22 (B1), Riggan_23 (B1), Rimu_23 (B1), Rinkes_26 (B9), Rita1961_24 (B3), Robyn_22 (B1), Rollet_23 (B1), RomaT_24 (B3), Roscoe_24 (B1), Roy17_23 (B1), SDcharge11_23 (B1), Saguaro_24 (B7), Samaymay_23 (B1), SassyCat97_22 (B1), Schadenfreude_22 (B1), Schueller_23 (B1), Scoot17C_23 (B1), Scrick_23 (B1), Selr12_23 (B1), Serendipitous_22 (B5), Serendipity_23 (B1), Serpentine_0023 (B1), Shatter_20 (DR), Sheila_23 (B1), Shenyu_23 (B5), ShiVal_23 (B1), Sigman_23 (B1), SilverBell_23 (B1), Simielle_22 (B1), SirJeffery_23 (B5), Sisko_20 (DR), Skippy_23 (B1), Slatt_23 (B1), SlippinJimmy_24 (B3), Soile_23 (B1), Solosis_22 (B1), Sophia_22 (B1), Soto_23 (B1), Spartan300_23 (B1), Squid_23 (B1), Squiggle_23 (B1), Stinger_19 (B4), StinkyVeggy_25 (B5), Struggle_22 (B1), Suffolk_23 (B1), Suigeneris_23 (B5), Surely_23 (B1), Swiphy_24 (B1), Swish_23 (B1), SynergyX_24 (B3), TallGrassMM_23 (B1), Telesworld_22 (B1), Thonko_22 (B8), Thora_23 (B1),

ThreeOh3D2_23 (B1), Thunderbird_22 (B1), Timmi_22 (B1), TomBombadil_23 (B1), Tomlarah_23 (B1), Toni_22 (B1), Tooj_23 (B1), True_22 (B1), Trypo_23 (B1), Tydolla_24 (B3), TyrionL_22 (B1), UAch1_23 (B1), UncleHowie_23 (B1), Usavi_23 (B1), Vaishali24_22 (B1), Valjean_23 (B1), Vaticameos_23 (B1), Veritas_22 (B1), Vincenzo_22 (B4), VioletZ_21 (B4), Virapocalypse_23 (B1), Virgeve_22 (B1), Vista_23 (B1), Vivaldi_23 (B1), Vortex_23 (B1), Waleliano_21 (B4), Wallhey_22 (B1), Waterdiva_23 (B1), Weher20_23 (B1), Windsor_22 (B1), Xavier_22 (B1), Xincheng_20 (B4), Yahalom_24 (B3), Yinz_24 (B3), Yoshand_23 (B1), YouGoGlencoco_23 (B1), Zaider_24 (B1), Zelda_23 (B1), Zemanar_22 (B4), Zenteno07_27 (B13), Zonia_23 (B1),

Start 29:

- Found in 1 of 466 (0.2%) of genes in pham
- Manual Annotations of this start: 1 of 418
- Called 100.0% of time when present
- Phage (with cluster) where this start called: CRB2_25 (B9),

Start 30:

- Found in 48 of 466 (10.3%) of genes in pham
- Manual Annotations of this start: 11 of 418
- Called 22.9% of time when present
- Phage (with cluster) where this start called: Argie_18 (W), Cepens_17 (W), D12_17 (W), GodPhather_18 (W), Jeon_17 (W), Mao1_19 (AD), Mask_20 (AD), Megabear_17 (W), PR_17 (W), Sejanus_20 (AD), Taptic_17 (W),

Start 33:

- Found in 1 of 466 (0.2%) of genes in pham
- No Manual Annotations of this start.
- Called 100.0% of time when present
- Phage (with cluster) where this start called: Pine5_23 (singleton),

Start 37:

- Found in 53 of 466 (11.4%) of genes in pham
- No Manual Annotations of this start.
- Called 1.9% of time when present
- Phage (with cluster) where this start called: Ben11_23 (B3),

Summary by clusters:

There are 17 clusters represented in this pham: singleton, B2, B10, B8, B11, B4, B5, B6, B7, B13, B1, W, B3, B12, DR, B9, AD,

Info for manual annotations of cluster AD:

- Start number 27 was manually annotated 1 time for cluster AD.
- Start number 30 was manually annotated 3 times for cluster AD.

Info for manual annotations of cluster B1:

- Start number 28 was manually annotated 262 times for cluster B1.

Info for manual annotations of cluster B10:

- Start number 28 was manually annotated 1 time for cluster B10.

Info for manual annotations of cluster B11:

- Start number 28 was manually annotated 1 time for cluster B11.

Info for manual annotations of cluster B12:

- Start number 28 was manually annotated 1 time for cluster B12.

Info for manual annotations of cluster B13:

- Start number 28 was manually annotated 2 times for cluster B13.

Info for manual annotations of cluster B2:

- Start number 25 was manually annotated 1 time for cluster B2.
- Start number 27 was manually annotated 31 times for cluster B2.

Info for manual annotations of cluster B3:

- Start number 28 was manually annotated 45 times for cluster B3.

Info for manual annotations of cluster B4:

- Start number 24 was manually annotated 1 time for cluster B4.
- Start number 28 was manually annotated 24 times for cluster B4.

Info for manual annotations of cluster B5:

- Start number 28 was manually annotated 9 times for cluster B5.

Info for manual annotations of cluster B6:

- Start number 27 was manually annotated 1 time for cluster B6.

Info for manual annotations of cluster B7:

- Start number 28 was manually annotated 1 time for cluster B7.

Info for manual annotations of cluster B8:

- Start number 28 was manually annotated 1 time for cluster B8.

Info for manual annotations of cluster B9:

- Start number 28 was manually annotated 5 times for cluster B9.
- Start number 29 was manually annotated 1 time for cluster B9.

Info for manual annotations of cluster DR:

- Start number 27 was manually annotated 12 times for cluster DR.
- Start number 28 was manually annotated 7 times for cluster DR.

Info for manual annotations of cluster W:

- Start number 30 was manually annotated 8 times for cluster W.

Gene Information:

Gene: 39HC_019 Start: 16977, Stop: 17525, Start Num: 27

Candidate Starts for 39HC_019:

(Start: 25 @16812 has 1 MA's), (26, 16926), (Start: 27 @16977 has 45 MA's), (35, 17010), (37, 17016), (39, 17022), (72, 17202), (82, 17271), (85, 17280), (87, 17292), (89, 17307), (96, 17373), (99, 17403), (117, 17505),

Gene: 40BC_019 Start: 16977, Stop: 17525, Start Num: 27

Candidate Starts for 40BC_019:

(Start: 25 @16812 has 1 MA's), (26, 16926), (Start: 27 @16977 has 45 MA's), (35, 17010), (37, 17016), (39, 17022), (72, 17202), (82, 17271), (85, 17280), (87, 17292), (89, 17307), (96, 17373), (99, 17403), (117, 17505),

Gene: ABU_23 Start: 17801, Stop: 18319, Start Num: 28

Candidate Starts for ABU_23:

(6, 17246), (7, 17300), (9, 17315), (10, 17324), (16, 17441), (18, 17483), (20, 17528), (26, 17747), (Start: 28 @17801 has 359 MA's), (38, 17834), (68, 17990), (69, 17996), (72, 18005), (82, 18071), (95, 18155), (111, 18257), (117, 18299),

Gene: Abinghost_24 Start: 18476, Stop: 18997, Start Num: 28

Candidate Starts for Abinghost_24:

(Start: 28 @18476 has 359 MA's), (37, 18506), (43, 18524), (47, 18536), (62, 18641), (82, 18764), (84, 18770), (86, 18779), (95, 18848), (106, 18905),

Gene: AbsoluteMadLad_22 Start: 17802, Stop: 18320, Start Num: 28

Candidate Starts for AbsoluteMadLad_22:

(26, 17748), (Start: 28 @17802 has 359 MA's), (38, 17835), (68, 17991), (69, 17997), (72, 18006), (82, 18072), (95, 18156), (111, 18258), (117, 18300),

Gene: Acadian_23 Start: 18554, Stop: 19045, Start Num: 28

Candidate Starts for Acadian_23:

(Start: 28 @18554 has 359 MA's), (42, 18590), (45, 18599), (56, 18641), (69, 18725), (70, 18728), (82, 18803), (87, 18824), (88, 18836), (113, 19007),

Gene: Adriana_23 Start: 17804, Stop: 18322, Start Num: 28

Candidate Starts for Adriana_23:

(6, 17249), (7, 17303), (9, 17318), (10, 17327), (16, 17444), (18, 17486), (20, 17531), (26, 17750), (Start: 28 @17804 has 359 MA's), (38, 17837), (68, 17993), (69, 17999), (72, 18008), (82, 18074), (95, 18158), (111, 18260), (117, 18302),

Gene: Aelin_22 Start: 17367, Stop: 17885, Start Num: 28

Candidate Starts for Aelin_22:

(26, 17313), (Start: 28 @17367 has 359 MA's), (38, 17400), (68, 17556), (69, 17562), (72, 17571), (82, 17637), (95, 17721), (111, 17823), (117, 17865),

Gene: Ahwei_20 Start: 17403, Stop: 17933, Start Num: 28

Candidate Starts for Ahwei_20:

(8, 16914), (14, 16947), (Start: 24 @17235 has 1 MA's), (Start: 28 @17403 has 359 MA's), (35, 17433), (52, 17502), (69, 17607), (73, 17637), (75, 17655), (83, 17688), (85, 17694), (87, 17706), (89, 17721), (96, 17775), (108, 17853),

Gene: Akoma_24 Start: 18474, Stop: 18995, Start Num: 28

Candidate Starts for Akoma_24:

(Start: 28 @18474 has 359 MA's), (37, 18504), (62, 18639), (82, 18762), (84, 18768), (86, 18777), (95, 18846), (106, 18903),

Gene: AlanGrant_22 Start: 19205, Stop: 19732, Start Num: 28

Candidate Starts for AlanGrant_22:

(Start: 28 @19205 has 359 MA's), (35, 19235), (49, 19292), (52, 19304), (69, 19409), (72, 19418), (75, 19457), (82, 19484), (85, 19493), (87, 19505), (89, 19520), (95, 19568), (96, 19574), (108, 19652),

Gene: Allegro_25 Start: 19911, Stop: 20471, Start Num: 27

Candidate Starts for Allegro_25:

(Start: 27 @19911 has 45 MA's), (Start: 30 @19929 has 11 MA's), (38, 19959), (42, 19971), (56, 20043), (63, 20100), (69, 20136), (74, 20187), (80, 20220), (102, 20367), (116, 20445),

Gene: AltPhacts_23 Start: 17796, Stop: 18314, Start Num: 28

Candidate Starts for AltPhacts_23:

(26, 17742), (Start: 28 @17796 has 359 MA's), (38, 17829), (68, 17985), (69, 17991), (72, 18000), (82, 18066), (95, 18150), (111, 18252), (117, 18294),

Gene: Altwerkus_22 Start: 17496, Stop: 18014, Start Num: 28

Candidate Starts for Altwerkus_22:

(26, 17442), (Start: 28 @17496 has 359 MA's), (38, 17529), (68, 17685), (69, 17691), (72, 17700), (82, 17766), (95, 17850), (111, 17952), (117, 17994),

Gene: AnClar_21 Start: 18550, Stop: 19098, Start Num: 28

Candidate Starts for AnClar_21:

(23, 18364), (Start: 25 @18382 has 1 MA's), (26, 18496), (Start: 27 @18547 has 45 MA's), (Start: 28 @18550 has 359 MA's), (45, 18616), (52, 18655), (59, 18706), (83, 18844), (87, 18862), (89, 18877), (111, 19033), (113, 19057), (115, 19066),

Gene: AnarQue_22 Start: 17730, Stop: 18269, Start Num: 27

Candidate Starts for AnarQue_22:

(26, 17679), (Start: 27 @17730 has 45 MA's), (45, 17796), (72, 17952), (79, 18012), (82, 18021), (87, 18042), (99, 18141), (103, 18162), (113, 18231), (115, 18240),

Gene: Anderson_23 Start: 17794, Stop: 18312, Start Num: 28

Candidate Starts for Anderson_23:

(6, 17239), (7, 17293), (9, 17308), (10, 17317), (16, 17434), (18, 17476), (20, 17521), (26, 17740), (Start: 28 @17794 has 359 MA's), (38, 17827), (68, 17983), (69, 17989), (72, 17998), (82, 18064), (95, 18148), (111, 18250), (117, 18292),

Gene: Andre_23 Start: 17792, Stop: 18310, Start Num: 28

Candidate Starts for Andre_23:

(26, 17738), (Start: 28 @17792 has 359 MA's), (38, 17825), (68, 17981), (69, 17987), (72, 17996), (82, 18062), (95, 18146), (111, 18248), (117, 18290),

Gene: Antihero_20 Start: 17403, Stop: 17933, Start Num: 28

Candidate Starts for Antihero_20:

(8, 16914), (14, 16947), (Start: 24 @17235 has 1 MA's), (Start: 28 @17403 has 359 MA's), (35, 17433), (52, 17502), (69, 17607), (73, 17637), (75, 17655), (83, 17688), (85, 17694), (87, 17706), (89, 17721), (96, 17775), (108, 17853),

Gene: Antonia_22 Start: 17367, Stop: 17885, Start Num: 28

Candidate Starts for Antonia_22:

(26, 17313), (Start: 28 @17367 has 359 MA's), (38, 17400), (68, 17556), (69, 17562), (72, 17571), (82, 17637), (95, 17721), (111, 17823), (117, 17865),

Gene: Apex_21 Start: 18616, Stop: 19146, Start Num: 28

Candidate Starts for Apex_21:

(Start: 24 @18448 has 1 MA's), (Start: 28 @18616 has 359 MA's), (35, 18646), (52, 18715), (69, 18820), (73, 18850), (75, 18868), (83, 18901), (85, 18907), (87, 18919), (89, 18934), (96, 18988), (99, 19018), (108, 19066),

Gene: Apizium_22 Start: 17537, Stop: 18055, Start Num: 28

Candidate Starts for Apizium_22:

(26, 17483), (Start: 28 @17537 has 359 MA's), (38, 17570), (68, 17726), (69, 17732), (72, 17741), (82, 17807), (95, 17891), (111, 17993), (117, 18035),

Gene: Arbiter_25 Start: 19999, Stop: 20559, Start Num: 27

Candidate Starts for Arbiter_25:

(Start: 25 @19837 has 1 MA's), (Start: 27 @19999 has 45 MA's), (Start: 30 @20017 has 11 MA's), (31, 20020), (38, 20047), (42, 20059), (56, 20131), (63, 20188), (69, 20224), (74, 20275), (80, 20308), (102, 20455), (116, 20533),

Gene: Ares_25 Start: 19915, Stop: 20475, Start Num: 27

Candidate Starts for Ares_25:

(Start: 25 @19753 has 1 MA's), (Start: 27 @19915 has 45 MA's), (Start: 30 @19933 has 11 MA's), (31, 19936), (38, 19963), (42, 19975), (56, 20047), (63, 20104), (69, 20140), (74, 20191), (80, 20224), (102, 20371), (116, 20449),

Gene: Argie_18 Start: 17562, Stop: 18083, Start Num: 30

Candidate Starts for Argie_18:

(26, 17508), (Start: 30 @17562 has 11 MA's), (35, 17583), (45, 17613), (50, 17643), (55, 17670), (56, 17676), (61, 17715), (69, 17748), (75, 17802), (76, 17808), (78, 17823), (87, 17862), (90, 17880), (109, 18009), (110, 18018), (112, 18027), (117, 18063),

Gene: Ashraf_22 Start: 17358, Stop: 17876, Start Num: 28

Candidate Starts for Ashraf_22:

(26, 17304), (Start: 28 @17358 has 359 MA's), (38, 17391), (68, 17547), (69, 17553), (72, 17562), (82, 17628), (95, 17712), (111, 17814), (117, 17856),

Gene: Athena_25 Start: 19239, Stop: 19760, Start Num: 28

Candidate Starts for Athena_25:

(Start: 28 @19239 has 359 MA's), (37, 19269), (43, 19287), (47, 19299), (62, 19404), (82, 19527), (84, 19533), (86, 19542), (95, 19611), (106, 19668),

Gene: Audrey_24 Start: 18476, Stop: 18997, Start Num: 28

Candidate Starts for Audrey_24:

(Start: 28 @18476 has 359 MA's), (37, 18506), (43, 18524), (47, 18536), (62, 18641), (82, 18764), (84, 18770), (86, 18779), (95, 18848), (106, 18905),

Gene: Austelle_22 Start: 19072, Stop: 19602, Start Num: 28

Candidate Starts for Austelle_22:

(Start: 24 @18904 has 1 MA's), (Start: 28 @19072 has 359 MA's), (35, 19102), (52, 19171), (69, 19276), (73, 19306), (75, 19324), (83, 19357), (85, 19363), (87, 19375), (89, 19390), (96, 19444), (99, 19474), (108, 19522),

Gene: Axumite_20 Start: 16345, Stop: 16893, Start Num: 28

Candidate Starts for Axumite_20:

(21, 16072), (23, 16159), (Start: 25 @16177 has 1 MA's), (26, 16291), (Start: 28 @16345 has 359 MA's), (31, 16363), (45, 16411), (82, 16636), (87, 16657), (89, 16672), (113, 16852), (115, 16861),

Gene: Badfish_23 Start: 17826, Stop: 18344, Start Num: 28

Candidate Starts for Badfish_23:

(6, 17271), (7, 17325), (9, 17340), (10, 17349), (16, 17466), (18, 17508), (20, 17553), (26, 17772), (Start: 28 @17826 has 359 MA's), (38, 17859), (68, 18015), (69, 18021), (72, 18030), (82, 18096), (95, 18180), (111, 18282), (117, 18324),

Gene: Bae_22 Start: 18312, Stop: 18803, Start Num: 28

Candidate Starts for Bae_22:

(11, 17838), (13, 17844), (15, 17856), (17, 17952), (19, 17994), (26, 18258), (Start: 28 @18312 has 359 MA's), (42, 18348), (45, 18357), (56, 18399), (69, 18483), (82, 18561), (87, 18582), (88, 18594), (90, 18600), (102, 18699), (113, 18765),

Gene: Baloo_24 Start: 18473, Stop: 18994, Start Num: 28

Candidate Starts for Baloo_24:

(Start: 28 @18473 has 359 MA's), (37, 18503), (43, 18521), (47, 18533), (62, 18638), (82, 18761), (84, 18767), (86, 18776), (95, 18845), (106, 18902),

Gene: Bananafish_25 Start: 19908, Stop: 20468, Start Num: 27

Candidate Starts for Bananafish_25:

(Start: 25 @19746 has 1 MA's), (Start: 27 @19908 has 45 MA's), (Start: 30 @19926 has 11 MA's), (31, 19929), (38, 19956), (42, 19968), (56, 20040), (63, 20097), (69, 20133), (74, 20184), (80, 20217), (102, 20364), (116, 20442),

Gene: Banjo_22 Start: 17503, Stop: 18021, Start Num: 28

Candidate Starts for Banjo_22:

(26, 17449), (Start: 28 @17503 has 359 MA's), (38, 17536), (68, 17692), (69, 17698), (72, 17707), (82, 17773), (95, 17857), (111, 17959), (117, 18001),

Gene: Basato_24 Start: 18028, Stop: 18546, Start Num: 28

Candidate Starts for Basato_24:

(26, 17974), (Start: 28 @18028 has 359 MA's), (38, 18061), (68, 18217), (69, 18223), (72, 18232), (82, 18298), (95, 18382), (111, 18484), (117, 18526),

Gene: BatteryCK_22 Start: 17360, Stop: 17878, Start Num: 28

Candidate Starts for BatteryCK_22:

(2, 16754), (6, 16805), (7, 16859), (9, 16874), (10, 16883), (16, 17000), (18, 17042), (20, 17087), (26, 17306), (Start: 28 @17360 has 359 MA's), (38, 17393), (68, 17549), (69, 17555), (72, 17564), (82, 17630), (95, 17714), (111, 17816), (117, 17858),

Gene: Beaglebox_22 Start: 17523, Stop: 18041, Start Num: 28

Candidate Starts for Beaglebox_22:

(6, 16968), (7, 17022), (9, 17037), (10, 17046), (16, 17163), (18, 17205), (20, 17250), (26, 17469), (Start: 28 @17523 has 359 MA's), (38, 17556), (68, 17712), (69, 17718), (72, 17727), (82, 17793), (95, 17877), (111, 17979), (117, 18021),

Gene: Ben11_23 Start: 18328, Stop: 18819, Start Num: 37

Candidate Starts for Ben11_23:

(Start: 28 @18298 has 359 MA's), (37, 18328), (43, 18346), (47, 18358), (62, 18463), (82, 18586), (84, 18592), (86, 18601), (95, 18670), (106, 18727),

Gene: Bernardo_24 Start: 18473, Stop: 18994, Start Num: 28

Candidate Starts for Bernardo_24:

(Start: 28 @18473 has 359 MA's), (37, 18503), (43, 18521), (62, 18638), (82, 18761), (84, 18767), (86, 18776), (95, 18845), (106, 18902),

Gene: BiggityBass_20 Start: 18635, Stop: 19186, Start Num: 27

Candidate Starts for BiggityBass_20:

(23, 18452), (Start: 25 @18470 has 1 MA's), (26, 18584), (Start: 27 @18635 has 45 MA's), (Start: 28 @18638 has 359 MA's), (31, 18656), (52, 18743), (87, 18950), (89, 18965), (111, 19121), (113, 19145), (115, 19154),

Gene: BirdsNest_26 Start: 17878, Stop: 18396, Start Num: 28

Candidate Starts for BirdsNest_26:

(12, 17407), (14, 17419), (Start: 25 @17710 has 1 MA's), (Start: 28 @17878 has 359 MA's), (41, 17920), (54, 17983), (56, 17992), (72, 18079), (83, 18151), (86, 18163), (89, 18184), (120, 18391),

Gene: Bishoperium_22 Start: 17509, Stop: 18027, Start Num: 28

Candidate Starts for Bishoperium_22:

(26, 17455), (Start: 28 @17509 has 359 MA's), (38, 17542), (68, 17698), (69, 17704), (72, 17713), (82, 17779), (95, 17863), (111, 17965), (117, 18007),

Gene: BlackStallion_23 Start: 17814, Stop: 18332, Start Num: 28

Candidate Starts for BlackStallion_23:

(6, 17259), (7, 17313), (9, 17328), (10, 17337), (16, 17454), (18, 17496), (20, 17541), (26, 17760), (Start: 28 @17814 has 359 MA's), (38, 17847), (68, 18003), (69, 18009), (72, 18018), (82, 18084), (95, 18168), (111, 18270), (117, 18312),

Gene: Blocker23_25 Start: 20032, Stop: 20592, Start Num: 27

Candidate Starts for Blocker23_25:

(Start: 25 @19870 has 1 MA's), (Start: 27 @20032 has 45 MA's), (Start: 30 @20050 has 11 MA's), (38, 20080), (42, 20092), (56, 20164), (63, 20221), (69, 20257), (74, 20308), (80, 20341), (102, 20488), (116, 20566),

Gene: BlueHusk_23 Start: 17310, Stop: 17828, Start Num: 28

Candidate Starts for BlueHusk_23:

(26, 17256), (Start: 28 @17310 has 359 MA's), (38, 17343), (68, 17499), (69, 17505), (72, 17514), (82, 17580), (95, 17664), (111, 17766), (117, 17808),

Gene: Bluephacebaby_22 Start: 17509, Stop: 18027, Start Num: 28

Candidate Starts for Bluephacebaby_22:

(26, 17455), (Start: 28 @17509 has 359 MA's), (38, 17542), (68, 17698), (69, 17704), (72, 17713), (82, 17779), (95, 17863), (111, 17965), (117, 18007),

Gene: BobRoss2024_19 Start: 16107, Stop: 16655, Start Num: 27

Candidate Starts for BobRoss2024_19:

(Start: 25 @15942 has 1 MA's), (26, 16056), (Start: 27 @16107 has 45 MA's), (45, 16173), (50, 16203), (72, 16332), (83, 16404), (89, 16437), (115, 16626),

Gene: BobbyK_21 Start: 18435, Stop: 18965, Start Num: 28

Candidate Starts for BobbyK_21:

(Start: 24 @18267 has 1 MA's), (Start: 28 @18435 has 359 MA's), (35, 18465), (52, 18534), (69, 18639), (73, 18669), (75, 18687), (83, 18720), (85, 18726), (87, 18738), (89, 18753), (96, 18807), (99, 18837), (108, 18885),

Gene: Boehler_23 Start: 17819, Stop: 18337, Start Num: 28

Candidate Starts for Boehler_23:

(26, 17765), (Start: 28 @17819 has 359 MA's), (38, 17852), (68, 18008), (69, 18014), (72, 18023), (82, 18089), (95, 18173), (111, 18275), (117, 18317),

Gene: Boyle_25 Start: 20033, Stop: 20593, Start Num: 27

Candidate Starts for Boyle_25:

(Start: 25 @19871 has 1 MA's), (Start: 27 @20033 has 45 MA's), (Start: 30 @20051 has 11 MA's), (31, 20054), (38, 20081), (42, 20093), (56, 20165), (63, 20222), (69, 20258), (74, 20309), (80, 20342), (102, 20489), (116, 20567),

Gene: Briakila_24 Start: 19241, Stop: 19762, Start Num: 28

Candidate Starts for Briakila_24:

(Start: 28 @19241 has 359 MA's), (37, 19271), (62, 19406), (82, 19529), (84, 19535), (86, 19544), (95, 19613), (106, 19670),

Gene: Brilliant_23 Start: 17514, Stop: 18032, Start Num: 28

Candidate Starts for Brilliant_23:

(2, 16908), (6, 16959), (7, 17013), (9, 17028), (10, 17037), (16, 17154), (18, 17196), (20, 17241), (26, 17460), (Start: 28 @17514 has 359 MA's), (38, 17547), (68, 17703), (69, 17709), (72, 17718), (82, 17784), (95, 17868), (111, 17970), (117, 18012),

Gene: BrownCNA_22 Start: 18687, Stop: 19217, Start Num: 28

Candidate Starts for BrownCNA_22:

(Start: 24 @18519 has 1 MA's), (Start: 28 @18687 has 359 MA's), (35, 18717), (52, 18786), (69, 18891), (73, 18921), (75, 18939), (83, 18972), (85, 18978), (87, 18990), (89, 19005), (96, 19059), (108, 19137),

Gene: Brownie5_25 Start: 20032, Stop: 20592, Start Num: 27

Candidate Starts for Brownie5_25:

(Start: 25 @19870 has 1 MA's), (Start: 27 @20032 has 45 MA's), (Start: 30 @20050 has 11 MA's), (31, 20053), (38, 20080), (42, 20092), (56, 20164), (63, 20221), (69, 20257), (74, 20308), (80, 20341), (102, 20488), (116, 20566),

Gene: Buckeye_23 Start: 17833, Stop: 18351, Start Num: 28

Candidate Starts for Buckeye_23:

(6, 17278), (7, 17332), (9, 17347), (10, 17356), (16, 17473), (18, 17515), (20, 17560), (26, 17779), (Start: 28 @17833 has 359 MA's), (38, 17866), (68, 18022), (69, 18028), (72, 18037), (82, 18103), (95, 18187), (111, 18289), (117, 18331),

Gene: Burr_22 Start: 17508, Stop: 18026, Start Num: 28

Candidate Starts for Burr_22:

(6, 16953), (7, 17007), (9, 17022), (10, 17031), (16, 17148), (18, 17190), (20, 17235), (26, 17454), (Start: 28 @17508 has 359 MA's), (38, 17541), (68, 17697), (69, 17703), (72, 17712), (82, 17778), (95, 17862), (111, 17964), (117, 18006),

Gene: CRB2_25 Start: 20186, Stop: 20707, Start Num: 29

Candidate Starts for CRB2_25:

(Start: 25 @20015 has 1 MA's), (Start: 28 @20183 has 359 MA's), (Start: 29 @20186 has 1 MA's), (37, 20216), (72, 20390), (82, 20459), (87, 20480), (89, 20495), (97, 20555), (100, 20585), (108, 20627), (113, 20669),

Gene: CaiB_22 Start: 17716, Stop: 18255, Start Num: 27

Candidate Starts for CaiB_22:

(26, 17665), (Start: 27 @17716 has 45 MA's), (45, 17782), (72, 17938), (79, 17998), (82, 18007), (87, 18028), (99, 18127), (103, 18148), (113, 18217), (115, 18226),

Gene: Calamitous_25 Start: 19912, Stop: 20472, Start Num: 27

Candidate Starts for Calamitous_25:

(Start: 25 @19750 has 1 MA's), (Start: 27 @19912 has 45 MA's), (Start: 30 @19930 has 11 MA's), (31, 19933), (38, 19960), (42, 19972), (56, 20044), (63, 20101), (69, 20137), (74, 20188), (80, 20221), (102, 20368), (116, 20446),

Gene: CamL_23 Start: 17807, Stop: 18325, Start Num: 28

Candidate Starts for CamL_23:

(26, 17753), (Start: 28 @17807 has 359 MA's), (38, 17840), (68, 17996), (69, 18002), (72, 18011), (82, 18077), (95, 18161), (111, 18263), (117, 18305),

Gene: CampRoach_23 Start: 17800, Stop: 18318, Start Num: 28

Candidate Starts for CampRoach_23:

(6, 17245), (7, 17299), (9, 17314), (10, 17323), (16, 17440), (18, 17482), (20, 17527), (26, 17746), (Start: 28 @17800 has 359 MA's), (38, 17833), (68, 17989), (69, 17995), (72, 18004), (82, 18070), (95, 18154), (111, 18256), (117, 18298),

Gene: Cannibal_23 Start: 17793, Stop: 18311, Start Num: 28

Candidate Starts for Cannibal_23:

(6, 17238), (7, 17292), (9, 17307), (10, 17316), (16, 17433), (18, 17475), (20, 17520), (26, 17739), (Start: 28 @17793 has 359 MA's), (38, 17826), (68, 17982), (69, 17988), (72, 17997), (82, 18063), (95, 18147), (111, 18249), (117, 18291),

Gene: Carthage_21 Start: 16719, Stop: 17237, Start Num: 28

Candidate Starts for Carthage_21:

(26, 16665), (Start: 28 @16719 has 359 MA's), (38, 16752), (68, 16908), (69, 16914), (72, 16923), (82, 16989), (95, 17073), (111, 17175), (117, 17217),

Gene: Casbah_23 Start: 18328, Stop: 18849, Start Num: 28

Candidate Starts for Casbah_23:

(Start: 28 @18328 has 359 MA's), (37, 18358), (62, 18493), (82, 18616), (84, 18622), (86, 18631), (95, 18700), (106, 18757),

Gene: Cepens_17 Start: 17286, Stop: 17807, Start Num: 30

Candidate Starts for Cepens_17:

(26, 17232), (Start: 30 @17286 has 11 MA's), (45, 17337), (50, 17367), (55, 17394), (56, 17400), (69, 17472), (75, 17526), (76, 17532), (78, 17547), (87, 17586), (90, 17604), (109, 17733), (110, 17742), (112, 17751), (117, 17787),

Gene: ChaChing_24 Start: 18491, Stop: 19012, Start Num: 28

Candidate Starts for ChaChing_24:

(Start: 28 @18491 has 359 MA's), (37, 18521), (43, 18539), (47, 18551), (62, 18656), (82, 18779), (84, 18785), (86, 18794), (95, 18863), (106, 18920),

Gene: Chaelin_22 Start: 17476, Stop: 17994, Start Num: 28

Candidate Starts for Chaelin_22:

(6, 16921), (7, 16975), (9, 16990), (10, 16999), (16, 17116), (18, 17158), (20, 17203), (26, 17422), (Start: 28 @17476 has 359 MA's), (38, 17509), (68, 17665), (69, 17671), (72, 17680), (82, 17746), (95, 17830), (111, 17932), (117, 17974),

Gene: Chah_24 Start: 17827, Stop: 18345, Start Num: 28

Candidate Starts for Chah_24:

(26, 17773), (Start: 28 @17827 has 359 MA's), (38, 17860), (68, 18016), (69, 18022), (72, 18031), (82, 18097), (95, 18181), (111, 18283), (117, 18325),

Gene: Chandler_24 Start: 19250, Stop: 19771, Start Num: 28

Candidate Starts for Chandler_24:

(Start: 28 @19250 has 359 MA's), (37, 19280), (43, 19298), (47, 19310), (62, 19415), (82, 19538), (84, 19544), (86, 19553), (95, 19622), (106, 19679),

Gene: Charles1_23 Start: 17791, Stop: 18309, Start Num: 28

Candidate Starts for Charles1_23:

(6, 17236), (7, 17290), (9, 17305), (10, 17314), (16, 17431), (18, 17473), (20, 17518), (26, 17737), (Start: 28 @17791 has 359 MA's), (38, 17824), (68, 17980), (69, 17986), (72, 17995), (82, 18061), (95, 18145), (111, 18247), (117, 18289),

Gene: CharlieGBrown_22 Start: 17378, Stop: 17896, Start Num: 28

Candidate Starts for CharlieGBrown_22:

(2, 16772), (6, 16823), (7, 16877), (9, 16892), (10, 16901), (16, 17018), (18, 17060), (20, 17105), (26, 17324), (Start: 28 @17378 has 359 MA's), (38, 17411), (68, 17567), (69, 17573), (72, 17582), (82, 17648), (95, 17732), (111, 17834), (117, 17876),

Gene: CharlottesWeb_20 Start: 16236, Stop: 16784, Start Num: 27

Candidate Starts for CharlottesWeb_20:

(23, 16053), (Start: 25 @16071 has 1 MA's), (26, 16185), (Start: 27 @16236 has 45 MA's), (45, 16302), (72, 16458), (81, 16524), (87, 16548), (89, 16563), (99, 16647), (115, 16752),

Gene: CheetO_23 Start: 17806, Stop: 18324, Start Num: 28

Candidate Starts for CheetO_23:

(26, 17752), (Start: 28 @17806 has 359 MA's), (38, 17839), (68, 17995), (69, 18001), (72, 18010), (82, 18076), (95, 18160), (111, 18262), (117, 18304),

Gene: Cher_22 Start: 17532, Stop: 18050, Start Num: 28

Candidate Starts for Cher_22:

(26, 17478), (Start: 28 @17532 has 359 MA's), (38, 17565), (68, 17721), (69, 17727), (72, 17736), (82, 17802), (95, 17886), (111, 17988), (117, 18030),

Gene: Childish_22 Start: 17520, Stop: 18038, Start Num: 28

Candidate Starts for Childish_22:

(26, 17466), (Start: 28 @17520 has 359 MA's), (38, 17553), (68, 17709), (69, 17715), (72, 17724), (82, 17790), (95, 17874), (111, 17976), (117, 18018),

Gene: Chorkpop_23 Start: 17531, Stop: 18049, Start Num: 28

Candidate Starts for Chorkpop_23:

(26, 17477), (Start: 28 @17531 has 359 MA's), (38, 17564), (68, 17720), (69, 17726), (72, 17735), (82, 17801), (95, 17885), (111, 17987), (117, 18029),

Gene: ChrisnMich_20 Start: 17392, Stop: 17922, Start Num: 28

Candidate Starts for ChrisnMich_20:

(Start: 24 @17224 has 1 MA's), (Start: 28 @17392 has 359 MA's), (35, 17422), (52, 17491), (69, 17596), (73, 17626), (75, 17644), (83, 17677), (85, 17683), (87, 17695), (89, 17710), (96, 17764), (108, 17842),

Gene: Chunky_23 Start: 17819, Stop: 18337, Start Num: 28

Candidate Starts for Chunky_23:

(26, 17765), (Start: 28 @17819 has 359 MA's), (38, 17852), (68, 18008), (69, 18014), (72, 18023), (82, 18089), (95, 18173), (111, 18275), (117, 18317),

Gene: Chute_22 Start: 17824, Stop: 18342, Start Num: 28

Candidate Starts for Chute_22:

(2, 17218), (6, 17269), (7, 17323), (9, 17338), (10, 17347), (16, 17464), (18, 17506), (20, 17551), (26, 17770), (Start: 28 @17824 has 359 MA's), (38, 17857), (68, 18013), (69, 18019), (72, 18028), (82, 18094), (95, 18178), (111, 18280), (117, 18322),

Gene: CloverMinnie_22 Start: 17656, Stop: 18195, Start Num: 27

Candidate Starts for CloverMinnie_22:

(26, 17605), (Start: 27 @17656 has 45 MA's), (45, 17722), (72, 17878), (79, 17938), (82, 17947), (87, 17968), (99, 18067), (103, 18088), (113, 18157), (115, 18166),

Gene: Cobra_23 Start: 17812, Stop: 18330, Start Num: 28

Candidate Starts for Cobra_23:

(26, 17758), (Start: 28 @17812 has 359 MA's), (38, 17845), (68, 18001), (69, 18007), (72, 18016), (82, 18082), (95, 18166), (111, 18268), (117, 18310),

Gene: Coffee_25 Start: 20025, Stop: 20585, Start Num: 27

Candidate Starts for Coffee_25:

(Start: 25 @19863 has 1 MA's), (Start: 27 @20025 has 45 MA's), (Start: 30 @20043 has 11 MA's), (31, 20046), (38, 20073), (42, 20085), (56, 20157), (63, 20214), (69, 20250), (74, 20301), (80, 20334), (102, 20481), (116, 20559),

Gene: Colbert_23 Start: 17809, Stop: 18327, Start Num: 28

Candidate Starts for Colbert_23:

(26, 17755), (Start: 28 @17809 has 359 MA's), (38, 17842), (68, 17998), (69, 18004), (72, 18013), (82, 18079), (95, 18163), (111, 18265), (117, 18307),

Gene: Coldpizza_23 Start: 20577, Stop: 21116, Start Num: 27

Candidate Starts for Coldpizza_23:

(26, 20526), (Start: 27 @20577 has 45 MA's), (42, 20634), (45, 20643), (59, 20733), (69, 20790), (89, 20904), (90, 20907), (91, 20913), (116, 21090),

Gene: Coletti_22 Start: 17824, Stop: 18342, Start Num: 28

Candidate Starts for Coletti_22:

(2, 17218), (6, 17269), (7, 17323), (9, 17338), (10, 17347), (16, 17464), (18, 17506), (20, 17551), (26, 17770), (Start: 28 @17824 has 359 MA's), (38, 17857), (68, 18013), (69, 18019), (72, 18028), (82, 18094), (95, 18178), (111, 18280), (117, 18322),

Gene: Compostia_25 Start: 18909, Stop: 19430, Start Num: 28

Candidate Starts for Compostia_25:

(Start: 28 @18909 has 359 MA's), (37, 18939), (43, 18957), (47, 18969), (62, 19074), (82, 19197), (84, 19203), (86, 19212), (95, 19281), (106, 19338),

Gene: Cooper_21 Start: 17506, Stop: 18036, Start Num: 28

Candidate Starts for Cooper_21:

(14, 17050), (18, 17188), (Start: 24 @17338 has 1 MA's), (Start: 28 @17506 has 359 MA's), (35, 17536), (52, 17605), (69, 17710), (75, 17758), (76, 17764), (82, 17788), (83, 17791), (85, 17797), (87, 17809), (89, 17824), (96, 17878), (98, 17896), (99, 17908), (104, 17932), (108, 17956), (118, 18019),

Gene: Cornobble_22 Start: 17367, Stop: 17885, Start Num: 28

Candidate Starts for Cornobble_22:

(6, 16812), (7, 16866), (9, 16881), (10, 16890), (16, 17007), (18, 17049), (20, 17094), (26, 17313), (Start: 28 @17367 has 359 MA's), (38, 17400), (68, 17556), (69, 17562), (72, 17571), (82, 17637), (95, 17721), (111, 17823), (117, 17865),

Gene: Corofin_24 Start: 18501, Stop: 19022, Start Num: 28

Candidate Starts for Corofin_24:

(Start: 28 @18501 has 359 MA's), (37, 18531), (43, 18549), (47, 18561), (62, 18666), (82, 18789), (84, 18795), (86, 18804), (95, 18873), (106, 18930),

Gene: Cosmolli16_22 Start: 17526, Stop: 18044, Start Num: 28

Candidate Starts for Cosmolli16_22:

(6, 16971), (7, 17025), (9, 17040), (10, 17049), (16, 17166), (18, 17208), (20, 17253), (26, 17472), (Start: 28 @17526 has 359 MA's), (38, 17559), (68, 17715), (69, 17721), (72, 17730), (82, 17796), (95, 17880), (111, 17982), (117, 18024),

Gene: Craff_23 Start: 17813, Stop: 18331, Start Num: 28

Candidate Starts for Craff_23:

(6, 17258), (7, 17312), (9, 17327), (10, 17336), (16, 17453), (18, 17495), (20, 17540), (26, 17759), (Start: 28 @17813 has 359 MA's), (38, 17846), (68, 18002), (69, 18008), (72, 18017), (82, 18083), (95, 18167), (111, 18269), (117, 18311),

Gene: Crownjwl_23 Start: 17580, Stop: 18098, Start Num: 28

Candidate Starts for Crownjwl_23:

(26, 17526), (Start: 28 @17580 has 359 MA's), (38, 17613), (68, 17769), (69, 17775), (72, 17784), (82, 17850), (95, 17934), (111, 18036), (117, 18078),

Gene: D12_17 Start: 17279, Stop: 17800, Start Num: 30

Candidate Starts for D12_17:

(26, 17225), (Start: 30 @17279 has 11 MA's), (45, 17330), (50, 17360), (52, 17372), (55, 17387), (56, 17393), (69, 17465), (75, 17519), (76, 17525), (78, 17540), (87, 17579), (90, 17597), (109, 17726), (110, 17735), (112, 17744), (117, 17780),

Gene: DaddyDaniels_23 Start: 17505, Stop: 18023, Start Num: 28

Candidate Starts for DaddyDaniels_23:

(26, 17451), (Start: 28 @17505 has 359 MA's), (38, 17538), (68, 17694), (69, 17700), (72, 17709), (82, 17775), (95, 17859), (111, 17961), (117, 18003),

Gene: Daffy_23 Start: 17532, Stop: 18050, Start Num: 28

Candidate Starts for Daffy_23:

(26, 17478), (Start: 28 @17532 has 359 MA's), (38, 17565), (68, 17721), (69, 17727), (72, 17736), (82, 17802), (95, 17886), (111, 17988), (117, 18030),

Gene: Daisy_24 Start: 18497, Stop: 19018, Start Num: 28

Candidate Starts for Daisy_24:

(Start: 28 @18497 has 359 MA's), (37, 18527), (43, 18545), (47, 18557), (62, 18662), (82, 18785), (84, 18791), (86, 18800), (95, 18869), (106, 18926),

Gene: Daka_23 Start: 17809, Stop: 18327, Start Num: 28

Candidate Starts for Daka_23:

(26, 17755), (Start: 28 @17809 has 359 MA's), (38, 17842), (68, 17998), (69, 18004), (72, 18013), (82, 18079), (95, 18163), (111, 18265), (117, 18307),

Gene: Dati_23 Start: 17522, Stop: 18040, Start Num: 28

Candidate Starts for Dati_23:

(2, 16916), (6, 16967), (7, 17021), (9, 17036), (10, 17045), (16, 17162), (18, 17204), (20, 17249), (26, 17468), (Start: 28 @17522 has 359 MA's), (38, 17555), (68, 17711), (69, 17717), (72, 17726), (82, 17792), (95, 17876), (111, 17978), (117, 18020),

Gene: Deenasa_24 Start: 19239, Stop: 19760, Start Num: 28

Candidate Starts for Deenasa_24:

(Start: 28 @19239 has 359 MA's), (37, 19269), (62, 19404), (82, 19527), (84, 19533), (86, 19542), (95, 19611), (106, 19668),

Gene: DelRivs_22 Start: 17521, Stop: 18039, Start Num: 28

Candidate Starts for DelRivs_22:

(6, 16966), (7, 17020), (9, 17035), (10, 17044), (16, 17161), (18, 17203), (20, 17248), (26, 17467), (Start: 28 @17521 has 359 MA's), (38, 17554), (68, 17710), (69, 17716), (72, 17725), (82, 17791), (95, 17875), (111, 17977), (117, 18019),

Gene: Derpp_22 Start: 17368, Stop: 17886, Start Num: 28

Candidate Starts for Derpp_22:

(6, 16813), (7, 16867), (9, 16882), (10, 16891), (16, 17008), (18, 17050), (20, 17095), (26, 17314), (Start: 28 @17368 has 359 MA's), (38, 17401), (68, 17557), (69, 17563), (72, 17572), (82, 17638), (95, 17722), (111, 17824), (117, 17866),

Gene: Devonte_24 Start: 18476, Stop: 18997, Start Num: 28

Candidate Starts for Devonte_24:

(Start: 28 @18476 has 359 MA's), (37, 18506), (43, 18524), (47, 18536), (62, 18641), (82, 18764), (84, 18770), (86, 18779), (95, 18848), (106, 18905),

Gene: Dice_22 Start: 17509, Stop: 18027, Start Num: 28

Candidate Starts for Dice_22:

(6, 16954), (7, 17008), (9, 17023), (10, 17032), (16, 17149), (18, 17191), (20, 17236), (26, 17455), (Start: 28 @17509 has 359 MA's), (38, 17542), (68, 17698), (69, 17704), (72, 17713), (82, 17779), (95, 17863), (111, 17965), (117, 18007),

Gene: DigitDog_23 Start: 18144, Stop: 18635, Start Num: 28

Candidate Starts for DigitDog_23:

(26, 18090), (Start: 28 @18144 has 359 MA's), (41, 18177), (42, 18180), (45, 18189), (69, 18315), (82, 18393), (87, 18414), (88, 18426), (102, 18531), (113, 18597),

Gene: Dingo_23 Start: 17793, Stop: 18311, Start Num: 28

Candidate Starts for Dingo_23:

(26, 17739), (Start: 28 @17793 has 359 MA's), (38, 17826), (68, 17982), (69, 17988), (72, 17997), (82, 18063), (95, 18147), (111, 18249), (117, 18291),

Gene: Dione_22 Start: 17510, Stop: 18028, Start Num: 28

Candidate Starts for Dione_22:

(26, 17456), (Start: 28 @17510 has 359 MA's), (38, 17543), (68, 17699), (69, 17705), (72, 17714), (82, 17780), (95, 17864), (111, 17966), (117, 18008),

Gene: DirtJuice_23 Start: 17795, Stop: 18313, Start Num: 28

Candidate Starts for DirtJuice_23:

(26, 17741), (Start: 28 @17795 has 359 MA's), (38, 17828), (68, 17984), (69, 17990), (72, 17999), (82, 18065), (95, 18149), (111, 18251), (117, 18293),

Gene: Doddsville_23 Start: 17522, Stop: 18040, Start Num: 28

Candidate Starts for Doddsville_23:

(26, 17468), (Start: 28 @17522 has 359 MA's), (38, 17555), (68, 17711), (69, 17717), (72, 17726), (82, 17792), (95, 17876), (111, 17978), (117, 18020),

Gene: DoesntMatter_23 Start: 17791, Stop: 18309, Start Num: 28

Candidate Starts for DoesntMatter_23:

(6, 17236), (7, 17290), (9, 17305), (10, 17314), (16, 17431), (18, 17473), (20, 17518), (26, 17737), (Start: 28 @17791 has 359 MA's), (38, 17824), (68, 17980), (69, 17986), (72, 17995), (82, 18061), (95, 18145), (111, 18247), (117, 18289),

Gene: DonSanchon_22 Start: 17508, Stop: 18026, Start Num: 28

Candidate Starts for DonSanchon_22:

(26, 17454), (Start: 28 @17508 has 359 MA's), (38, 17541), (68, 17697), (69, 17703), (72, 17712), (82, 17778), (95, 17862), (111, 17964), (117, 18006),

Gene: Donny_23 Start: 18559, Stop: 19050, Start Num: 28

Candidate Starts for Donny_23:

(26, 18505), (Start: 28 @18559 has 359 MA's), (42, 18595), (45, 18604), (56, 18646), (69, 18730), (82, 18808), (87, 18829), (88, 18841), (90, 18847), (113, 19012),

Gene: Dori_20 Start: 15428, Stop: 15976, Start Num: 27

Candidate Starts for Dori_20:

(22, 15245), (Start: 25 @15266 has 1 MA's), (26, 15377), (Start: 27 @15428 has 45 MA's), (Start: 30 @15431 has 11 MA's), (45, 15482), (50, 15512), (56, 15545), (58, 15572), (60, 15584), (65, 15614), (69, 15641), (79, 15725), (80, 15728), (87, 15755), (90, 15773), (117, 15956),

Gene: DuchessDung_21 Start: 16659, Stop: 17177, Start Num: 28

Candidate Starts for DuchessDung_21:

(26, 16605), (Start: 28 @16659 has 359 MA's), (38, 16692), (68, 16848), (69, 16854), (72, 16863), (82, 16929), (95, 17013), (111, 17115), (117, 17157),

Gene: Duggie_22 Start: 17524, Stop: 18042, Start Num: 28

Candidate Starts for Duggie_22:

(26, 17470), (Start: 28 @17524 has 359 MA's), (38, 17557), (68, 17713), (69, 17719), (72, 17728), (82, 17794), (95, 17878), (111, 17980), (117, 18022),

Gene: Durga_23 Start: 17821, Stop: 18339, Start Num: 28

Candidate Starts for Durga_23:

(2, 17215), (6, 17266), (7, 17320), (9, 17335), (10, 17344), (16, 17461), (18, 17503), (20, 17548), (26, 17767), (Start: 28 @17821 has 359 MA's), (38, 17854), (68, 18010), (69, 18016), (72, 18025), (82, 18091), (95, 18175), (111, 18277), (117, 18319),

Gene: Eaglehorse_25 Start: 19933, Stop: 20493, Start Num: 27

Candidate Starts for Eaglehorse_25:

(Start: 25 @19771 has 1 MA's), (Start: 27 @19933 has 45 MA's), (Start: 30 @19951 has 11 MA's), (31, 19954), (38, 19981), (42, 19993), (56, 20065), (63, 20122), (69, 20158), (74, 20209), (80, 20242), (102, 20389), (116, 20467),

Gene: EastView9101_22 Start: 18189, Stop: 18680, Start Num: 28

Candidate Starts for EastView9101_22:

(26, 18135), (Start: 28 @18189 has 359 MA's), (42, 18225), (45, 18234), (56, 18276), (69, 18360), (77, 18417), (82, 18438), (87, 18459), (88, 18471), (102, 18576), (113, 18642),

Gene: Emiris_23 Start: 17802, Stop: 18320, Start Num: 28

Candidate Starts for Emiris_23:

(26, 17748), (Start: 28 @17802 has 359 MA's), (38, 17835), (68, 17991), (69, 17997), (72, 18006), (82, 18072), (95, 18156), (111, 18258), (117, 18300),

Gene: EmpTee_23 Start: 17808, Stop: 18326, Start Num: 28

Candidate Starts for EmpTee_23:

(26, 17754), (Start: 28 @17808 has 359 MA's), (38, 17841), (68, 17997), (69, 18003), (72, 18012), (82, 18078), (95, 18162), (111, 18264), (117, 18306),

Gene: Epah_20 Start: 17403, Stop: 17933, Start Num: 28

Candidate Starts for Epah_20:

(8, 16914), (14, 16947), (Start: 24 @17235 has 1 MA's), (Start: 28 @17403 has 359 MA's), (35, 17433), (52, 17502), (69, 17607), (73, 17637), (75, 17655), (83, 17688), (85, 17694), (87, 17706), (89, 17721), (96, 17775), (108, 17853),

Gene: Eremos_23 Start: 17808, Stop: 18326, Start Num: 28

Candidate Starts for Eremos_23:

(26, 17754), (Start: 28 @17808 has 359 MA's), (38, 17841), (68, 17997), (69, 18003), (72, 18012), (82, 18078), (95, 18162), (111, 18264), (117, 18306),

Gene: Etaye_23 Start: 17794, Stop: 18312, Start Num: 28

Candidate Starts for Etaye_23:

(2, 17188), (6, 17239), (7, 17293), (9, 17308), (10, 17317), (16, 17434), (18, 17476), (20, 17521), (26, 17740), (Start: 28 @17794 has 359 MA's), (38, 17827), (68, 17983), (69, 17989), (72, 17998), (82, 18064), (95, 18148), (111, 18250), (117, 18292),

Gene: Eugenia_23 Start: 17821, Stop: 18339, Start Num: 28

Candidate Starts for Eugenia_23:

(6, 17266), (7, 17320), (9, 17335), (10, 17344), (16, 17461), (18, 17503), (20, 17548), (26, 17767), (Start: 28 @17821 has 359 MA's), (38, 17854), (68, 18010), (69, 18016), (72, 18025), (82, 18091), (95, 18175), (111, 18277), (117, 18319),

Gene: Evaa_21 Start: 17590, Stop: 18126, Start Num: 27

Candidate Starts for Evaa_21:

(23, 17407), (Start: 25 @17425 has 1 MA's), (26, 17539), (Start: 27 @17590 has 45 MA's), (40, 17641), (42, 17647), (45, 17656), (87, 17899), (114, 18091), (117, 18106), (119, 18115),

Gene: Fanaw_20 Start: 18097, Stop: 18627, Start Num: 28

Candidate Starts for Fanaw_20:

(Start: 24 @17929 has 1 MA's), (Start: 28 @18097 has 359 MA's), (35, 18127), (52, 18196), (69, 18301), (73, 18331), (75, 18349), (83, 18382), (85, 18388), (87, 18400), (89, 18415), (96, 18469), (99, 18499), (108, 18547),

Gene: Fang_23 Start: 17822, Stop: 18340, Start Num: 28

Candidate Starts for Fang_23:

(26, 17768), (Start: 28 @17822 has 359 MA's), (38, 17855), (68, 18011), (69, 18017), (72, 18026), (82, 18092), (95, 18176), (111, 18278), (117, 18320),

Gene: Faze9_25 Start: 20029, Stop: 20589, Start Num: 27

Candidate Starts for Faze9_25:

(Start: 25 @19867 has 1 MA's), (Start: 27 @20029 has 45 MA's), (Start: 30 @20047 has 11 MA's), (31, 20050), (38, 20077), (42, 20089), (56, 20161), (63, 20218), (69, 20254), (74, 20305), (80, 20338), (102, 20485), (116, 20563),

Gene: FluffyNinja_23 Start: 17814, Stop: 18332, Start Num: 28

Candidate Starts for FluffyNinja_23:

(6, 17259), (7, 17313), (9, 17328), (10, 17337), (16, 17454), (18, 17496), (20, 17541), (26, 17760), (Start: 28 @17814 has 359 MA's), (38, 17847), (68, 18003), (69, 18009), (72, 18018), (82, 18084), (95, 18168), (111, 18270), (117, 18312),

Gene: Fortunato_21 Start: 18261, Stop: 18959, Start Num: 24

Candidate Starts for Fortunato_21:

(Start: 24 @18261 has 1 MA's), (Start: 28 @18429 has 359 MA's), (35, 18459), (52, 18528), (69, 18633), (73, 18663), (75, 18681), (83, 18714), (85, 18720), (87, 18732), (89, 18747), (96, 18801), (99, 18831), (108, 18879),

Gene: Fozzie_22 Start: 17817, Stop: 18335, Start Num: 28

Candidate Starts for Fozzie_22:

(26, 17763), (Start: 28 @17817 has 359 MA's), (38, 17850), (68, 18006), (69, 18012), (72, 18021), (82, 18087), (95, 18171), (111, 18273), (117, 18315),

Gene: Frankicide_23 Start: 17808, Stop: 18326, Start Num: 28

Candidate Starts for Frankicide_23:

(26, 17754), (Start: 28 @17808 has 359 MA's), (38, 17841), (68, 17997), (69, 18003), (72, 18012), (82, 18078), (95, 18162), (111, 18264), (117, 18306),

Gene: Frederick_21 Start: 18438, Stop: 18968, Start Num: 28

Candidate Starts for Frederick_21:

(Start: 24 @18270 has 1 MA's), (Start: 28 @18438 has 359 MA's), (35, 18468), (52, 18537), (69, 18642), (73, 18672), (75, 18690), (83, 18723), (85, 18729), (87, 18741), (89, 18756), (96, 18810), (99, 18840), (108, 18888),

Gene: FrenchFry_25 Start: 20032, Stop: 20592, Start Num: 27

Candidate Starts for FrenchFry_25:

(Start: 25 @19870 has 1 MA's), (Start: 27 @20032 has 45 MA's), (Start: 30 @20050 has 11 MA's), (31, 20053), (38, 20080), (42, 20092), (56, 20164), (63, 20221), (69, 20257), (74, 20308), (80, 20341), (102, 20488), (116, 20566),

Gene: Fresco_20 Start: 16345, Stop: 16893, Start Num: 28

Candidate Starts for Fresco_20:

(21, 16072), (23, 16159), (Start: 25 @16177 has 1 MA's), (26, 16291), (Start: 28 @16345 has 359 MA's), (31, 16363), (45, 16411), (82, 16636), (87, 16657), (89, 16672), (113, 16852), (115, 16861),

Gene: Freya_22 Start: 17503, Stop: 18021, Start Num: 28

Candidate Starts for Freya_22:

(26, 17449), (Start: 28 @17503 has 359 MA's), (38, 17536), (68, 17692), (69, 17698), (72, 17707), (82, 17773), (95, 17857), (111, 17959), (117, 18001),

Gene: FriarPreacher_23 Start: 17828, Stop: 18346, Start Num: 28

Candidate Starts for FriarPreacher_23:

(26, 17774), (Start: 28 @17828 has 359 MA's), (38, 17861), (68, 18017), (69, 18023), (72, 18032), (82, 18098), (95, 18182), (111, 18284), (117, 18326),

Gene: Fringe_23 Start: 17792, Stop: 18310, Start Num: 28

Candidate Starts for Fringe_23:

(6, 17237), (7, 17291), (9, 17306), (10, 17315), (16, 17432), (18, 17474), (20, 17519), (26, 17738), (Start: 28 @17792 has 359 MA's), (38, 17825), (68, 17981), (69, 17987), (72, 17996), (82, 18062), (95, 18146), (111, 18248), (117, 18290),

Gene: FugateOSU_22 Start: 17514, Stop: 18032, Start Num: 28

Candidate Starts for FugateOSU_22:

(26, 17460), (Start: 28 @17514 has 359 MA's), (38, 17547), (68, 17703), (69, 17709), (72, 17718), (82, 17784), (95, 17868), (111, 17970), (117, 18012),

Gene: Funsized_26 Start: 20899, Stop: 21408, Start Num: 28

Candidate Starts for Funsized_26:

(26, 20845), (Start: 28 @20899 has 359 MA's), (32, 20911), (41, 20941), (42, 20944), (54, 20995), (67, 21070), (69, 21082), (71, 21088), (90, 21199), (96, 21250), (100, 21286), (101, 21289), (113, 21370),

Gene: Gadget_25 Start: 18480, Stop: 19004, Start Num: 28

Candidate Starts for Gadget_25:

(Start: 28 @18480 has 359 MA's), (37, 18513), (43, 18531), (62, 18648), (82, 18771), (84, 18777), (86, 18786), (95, 18855), (106, 18912),

Gene: Gareth_22 Start: 17511, Stop: 18029, Start Num: 28

Candidate Starts for Gareth_22:

(26, 17457), (Start: 28 @17511 has 359 MA's), (38, 17544), (68, 17700), (69, 17706), (72, 17715), (82, 17781), (95, 17865), (111, 17967), (117, 18009),

Gene: GeneCoco_23 Start: 17813, Stop: 18331, Start Num: 28

Candidate Starts for GeneCoco_23:

(2, 17207), (6, 17258), (7, 17312), (9, 17327), (10, 17336), (16, 17453), (18, 17495), (20, 17540), (26, 17759), (Start: 28 @17813 has 359 MA's), (38, 17846), (68, 18002), (69, 18008), (72, 18017), (82, 18083), (95, 18167), (111, 18269), (117, 18311),

Gene: Gervas_24 Start: 18457, Stop: 18978, Start Num: 28

Candidate Starts for Gervas_24:

(Start: 28 @18457 has 359 MA's), (37, 18487), (43, 18505), (62, 18622), (82, 18745), (84, 18751), (86, 18760), (95, 18829), (106, 18886),

Gene: GinPorsche_20 Start: 17403, Stop: 17933, Start Num: 28

Candidate Starts for GinPorsche_20:

(8, 16914), (14, 16947), (Start: 24 @17235 has 1 MA's), (Start: 28 @17403 has 359 MA's), (35, 17433), (52, 17502), (69, 17607), (73, 17637), (75, 17655), (83, 17688), (85, 17694), (87, 17706), (89, 17721), (96, 17775), (108, 17853),

Gene: Giraffe_23 Start: 17516, Stop: 18034, Start Num: 28

Candidate Starts for Giraffe_23:

(26, 17462), (Start: 28 @17516 has 359 MA's), (38, 17549), (68, 17705), (69, 17711), (72, 17720), (82, 17786), (95, 17870), (111, 17972), (117, 18014),

Gene: Glass_25 Start: 20032, Stop: 20592, Start Num: 27

Candidate Starts for Glass_25:

(Start: 25 @19870 has 1 MA's), (Start: 27 @20032 has 45 MA's), (Start: 30 @20050 has 11 MA's), (31, 20053), (38, 20080), (42, 20092), (56, 20164), (63, 20221), (69, 20257), (74, 20308), (80, 20341),

(102, 20488), (116, 20566),

Gene: GlenHope_25 Start: 18466, Stop: 18987, Start Num: 28

Candidate Starts for GlenHope_25:

(Start: 28 @18466 has 359 MA's), (37, 18496), (43, 18514), (62, 18631), (82, 18754), (84, 18760), (86, 18769), (95, 18838), (106, 18895),

Gene: GodPhather_18 Start: 17544, Stop: 18065, Start Num: 30

Candidate Starts for GodPhather_18:

(26, 17490), (Start: 30 @17544 has 11 MA's), (35, 17565), (45, 17595), (55, 17652), (56, 17658), (61, 17697), (69, 17730), (75, 17784), (76, 17790), (78, 17805), (87, 17844), (90, 17862), (109, 17991), (110, 18000), (112, 18009), (117, 18045),

Gene: Godines_25 Start: 19925, Stop: 20485, Start Num: 27

Candidate Starts for Godines_25:

(Start: 25 @19763 has 1 MA's), (Start: 27 @19925 has 45 MA's), (Start: 30 @19943 has 11 MA's), (31, 19946), (38, 19973), (42, 19985), (56, 20057), (63, 20114), (69, 20150), (74, 20201), (80, 20234), (102, 20381), (116, 20459),

Gene: Gophee_23 Start: 17794, Stop: 18312, Start Num: 28

Candidate Starts for Gophee_23:

(6, 17239), (7, 17293), (9, 17308), (10, 17317), (16, 17434), (18, 17476), (20, 17521), (26, 17740), (Start: 28 @17794 has 359 MA's), (38, 17827), (68, 17983), (69, 17989), (72, 17998), (82, 18064), (95, 18148), (111, 18250), (117, 18292),

Gene: Grand2040_22 Start: 17531, Stop: 18049, Start Num: 28

Candidate Starts for Grand2040_22:

(26, 17477), (Start: 28 @17531 has 359 MA's), (38, 17564), (68, 17720), (69, 17726), (72, 17735), (82, 17801), (95, 17885), (111, 17987), (117, 18029),

Gene: Gwilliam_23 Start: 17804, Stop: 18322, Start Num: 28

Candidate Starts for Gwilliam_23:

(26, 17750), (Start: 28 @17804 has 359 MA's), (38, 17837), (68, 17993), (69, 17999), (72, 18008), (82, 18074), (95, 18158), (111, 18260), (117, 18302),

Gene: Gyarad_0023 Start: 17806, Stop: 18324, Start Num: 28

Candidate Starts for Gyarad_0023:

(26, 17752), (Start: 28 @17806 has 359 MA's), (38, 17839), (68, 17995), (69, 18001), (72, 18010), (82, 18076), (95, 18160), (111, 18262), (117, 18304),

Gene: HSavage_23 Start: 17814, Stop: 18332, Start Num: 28

Candidate Starts for HSavage_23:

(26, 17760), (Start: 28 @17814 has 359 MA's), (38, 17847), (68, 18003), (69, 18009), (72, 18018), (82, 18084), (95, 18168), (111, 18270), (117, 18312),

Gene: Haimas_23 Start: 17809, Stop: 18327, Start Num: 28

Candidate Starts for Haimas_23:

(6, 17254), (7, 17308), (9, 17323), (10, 17332), (16, 17449), (18, 17491), (20, 17536), (26, 17755), (Start: 28 @17809 has 359 MA's), (38, 17842), (68, 17998), (69, 18004), (72, 18013), (82, 18079), (95, 18163), (111, 18265), (117, 18307),

Gene: Haleema_22 Start: 17531, Stop: 18049, Start Num: 28

Candidate Starts for Haleema_22:

(6, 16976), (7, 17030), (9, 17045), (10, 17054), (16, 17171), (18, 17213), (20, 17258), (26, 17477), (Start: 28 @17531 has 359 MA's), (38, 17564), (68, 17720), (69, 17726), (72, 17735), (82, 17801), (95, 17885), (111, 17987), (117, 18029),

Gene: Halfpint_23 Start: 18301, Stop: 18822, Start Num: 28

Candidate Starts for Halfpint_23:

(Start: 28 @18301 has 359 MA's), (37, 18331), (43, 18349), (47, 18361), (62, 18466), (82, 18589), (84, 18595), (86, 18604), (95, 18673), (106, 18730),

Gene: Hally898_20 Start: 17403, Stop: 17933, Start Num: 28

Candidate Starts for Hally898_20:

(8, 16914), (14, 16947), (Start: 24 @17235 has 1 MA's), (Start: 28 @17403 has 359 MA's), (35, 17433), (52, 17502), (69, 17607), (73, 17637), (75, 17655), (83, 17688), (85, 17694), (87, 17706), (89, 17721), (96, 17775), (108, 17853),

Gene: Hamish_23 Start: 17801, Stop: 18319, Start Num: 28

Candidate Starts for Hamish_23:

(6, 17246), (7, 17300), (9, 17315), (10, 17324), (16, 17441), (18, 17483), (20, 17528), (26, 17747), (Start: 28 @17801 has 359 MA's), (38, 17834), (68, 17990), (69, 17996), (72, 18005), (82, 18071), (95, 18155), (111, 18257), (117, 18299),

Gene: Hangman_21 Start: 18436, Stop: 18966, Start Num: 28

Candidate Starts for Hangman_21:

(Start: 24 @18268 has 1 MA's), (Start: 28 @18436 has 359 MA's), (35, 18466), (52, 18535), (69, 18640), (73, 18670), (75, 18688), (83, 18721), (85, 18727), (87, 18739), (89, 18754), (96, 18808), (108, 18886),

Gene: Hartsy_23 Start: 17804, Stop: 18322, Start Num: 28

Candidate Starts for Hartsy_23:

(2, 17198), (6, 17249), (7, 17303), (9, 17318), (10, 17327), (16, 17444), (18, 17486), (20, 17531), (26, 17750), (Start: 28 @17804 has 359 MA's), (38, 17837), (68, 17993), (69, 17999), (72, 18008), (82, 18074), (95, 18158), (111, 18260), (117, 18302),

Gene: Harvey_23 Start: 17830, Stop: 18348, Start Num: 28

Candidate Starts for Harvey_23:

(26, 17776), (Start: 28 @17830 has 359 MA's), (38, 17863), (68, 18019), (69, 18025), (72, 18034), (82, 18100), (95, 18184), (111, 18286), (117, 18328),

Gene: HarveySr_24 Start: 18453, Stop: 18977, Start Num: 28

Candidate Starts for HarveySr_24:

(Start: 28 @18453 has 359 MA's), (37, 18486), (43, 18504), (47, 18516), (62, 18621), (82, 18744), (84, 18750), (86, 18759), (95, 18828), (106, 18885),

Gene: Hashim76_27 Start: 18297, Stop: 18815, Start Num: 28

Candidate Starts for Hashim76_27:

(Start: 25 @18129 has 1 MA's), (Start: 28 @18297 has 359 MA's), (41, 18339), (54, 18402), (56, 18411), (72, 18498), (83, 18570), (86, 18582), (89, 18603),

Gene: Heath_20 Start: 18067, Stop: 18597, Start Num: 28

Candidate Starts for Heath_20:

(Start: 24 @17899 has 1 MA's), (Start: 28 @18067 has 359 MA's), (35, 18097), (52, 18166), (69, 18271), (73, 18301), (75, 18319), (83, 18352), (85, 18358), (87, 18370), (89, 18385), (96, 18439), (108, 18517),

Gene: Heathcliff_24 Start: 18438, Stop: 18959, Start Num: 28

Candidate Starts for Heathcliff_24:

(Start: 28 @18438 has 359 MA's), (37, 18468), (43, 18486), (47, 18498), (62, 18603), (82, 18726), (84, 18732), (86, 18741), (95, 18810), (106, 18867),

Gene: Hedgerow_25 Start: 20014, Stop: 20574, Start Num: 27

Candidate Starts for Hedgerow_25:

(Start: 25 @19852 has 1 MA's), (Start: 27 @20014 has 45 MA's), (Start: 30 @20032 has 11 MA's), (31, 20035), (38, 20062), (42, 20074), (56, 20146), (63, 20203), (69, 20239), (74, 20290), (80, 20323), (102, 20470), (116, 20548),

Gene: Held_23 Start: 17515, Stop: 18033, Start Num: 28

Candidate Starts for Held_23:

(26, 17461), (Start: 28 @17515 has 359 MA's), (38, 17548), (68, 17704), (69, 17710), (72, 17719), (82, 17785), (95, 17869), (111, 17971), (117, 18013),

Gene: HenryJackson_22 Start: 17531, Stop: 18049, Start Num: 28

Candidate Starts for HenryJackson_22:

(26, 17477), (Start: 28 @17531 has 359 MA's), (38, 17564), (68, 17720), (69, 17726), (72, 17735), (82, 17801), (95, 17885), (111, 17987), (117, 18029),

Gene: Hertubise_23 Start: 17823, Stop: 18341, Start Num: 28

Candidate Starts for Hertubise_23:

(6, 17268), (7, 17322), (9, 17337), (10, 17346), (16, 17463), (18, 17505), (20, 17550), (26, 17769), (Start: 28 @17823 has 359 MA's), (38, 17856), (68, 18012), (69, 18018), (72, 18027), (82, 18093), (95, 18177), (111, 18279), (117, 18321),

Gene: Hetaeria_23 Start: 17824, Stop: 18342, Start Num: 28

Candidate Starts for Hetaeria_23:

(26, 17770), (Start: 28 @17824 has 359 MA's), (38, 17857), (68, 18013), (69, 18019), (72, 18028), (82, 18094), (95, 18178), (111, 18280), (117, 18322),

Gene: HighStump_22 Start: 17514, Stop: 18032, Start Num: 28

Candidate Starts for HighStump_22:

(26, 17460), (Start: 28 @17514 has 359 MA's), (38, 17547), (68, 17703), (69, 17709), (72, 17718), (82, 17784), (95, 17868), (111, 17970), (117, 18012),

Gene: Hocus_22 Start: 17517, Stop: 18035, Start Num: 28

Candidate Starts for Hocus_22:

(26, 17463), (Start: 28 @17517 has 359 MA's), (38, 17550), (68, 17706), (69, 17712), (72, 17721), (82, 17787), (95, 17871), (111, 17973), (117, 18015),

Gene: Holeinone_25 Start: 19910, Stop: 20470, Start Num: 27

Candidate Starts for Holeinone_25:

(Start: 25 @19748 has 1 MA's), (Start: 27 @19910 has 45 MA's), (Start: 30 @19928 has 11 MA's), (31, 19931), (38, 19958), (42, 19970), (56, 20042), (63, 20099), (69, 20135), (74, 20186), (80, 20219), (102, 20366), (116, 20444),

Gene: Horchata_23 Start: 17793, Stop: 18311, Start Num: 28

Candidate Starts for Horchata_23:

(26, 17739), (Start: 28 @17793 has 359 MA's), (38, 17826), (68, 17982), (69, 17988), (72, 17997), (82, 18063), (95, 18147), (111, 18249), (117, 18291),

Gene: Hosp_017 Start: 15179, Stop: 15727, Start Num: 27

Candidate Starts for Hosp_017:

(Start: 25 @15014 has 1 MA's), (26, 15128), (Start: 27 @15179 has 45 MA's), (35, 15212), (41, 15230), (45, 15242), (47, 15248), (69, 15395), (72, 15404), (82, 15473), (83, 15476), (87, 15494), (89, 15509), (96, 15575), (117, 15707),

Gene: Hydro_21 Start: 18435, Stop: 18965, Start Num: 28

Candidate Starts for Hydro_21:

(Start: 28 @18435 has 359 MA's), (35, 18465), (52, 18534), (69, 18639), (73, 18669), (75, 18687), (83, 18720), (85, 18726), (87, 18738), (96, 18807), (108, 18885),

Gene: ImtiyazSitla_22 Start: 17358, Stop: 17876, Start Num: 28

Candidate Starts for ImtiyazSitla_22:

(26, 17304), (Start: 28 @17358 has 359 MA's), (38, 17391), (68, 17547), (69, 17553), (72, 17562), (82, 17628), (95, 17712), (111, 17814), (117, 17856),

Gene: Imvubu_17 Start: 15573, Stop: 16082, Start Num: 28

Candidate Starts for Imvubu_17:

(20, 15297), (26, 15519), (Start: 28 @15573 has 359 MA's), (32, 15585), (41, 15615), (42, 15618), (53, 15660), (56, 15678), (67, 15744), (69, 15756), (83, 15837), (87, 15855), (90, 15873), (96, 15924), (100, 15960), (110, 16017), (113, 16044), (117, 16062),

Gene: Inchworm_23 Start: 17800, Stop: 18318, Start Num: 28

Candidate Starts for Inchworm_23:

(6, 17245), (7, 17299), (9, 17314), (10, 17323), (16, 17440), (18, 17482), (20, 17527), (26, 17746), (Start: 28 @17800 has 359 MA's), (38, 17833), (68, 17989), (69, 17995), (72, 18004), (82, 18070), (95, 18154), (111, 18256), (117, 18298),

Gene: Indlovu_21 Start: 18170, Stop: 18697, Start Num: 28

Candidate Starts for Indlovu_21:

(26, 18116), (Start: 28 @18170 has 359 MA's), (68, 18359), (71, 18371), (93, 18500), (97, 18545), (100, 18575), (113, 18659), (117, 18677),

Gene: Inverness_23 Start: 17814, Stop: 18332, Start Num: 28

Candidate Starts for Inverness_23:

(26, 17760), (Start: 28 @17814 has 359 MA's), (38, 17847), (68, 18003), (69, 18009), (72, 18018), (82, 18084), (95, 18168), (111, 18270), (117, 18312),

Gene: Iridoclysis_23 Start: 17788, Stop: 18306, Start Num: 28

Candidate Starts for Iridoclysis_23:

(6, 17233), (7, 17287), (9, 17302), (10, 17311), (16, 17428), (18, 17470), (20, 17515), (26, 17734), (Start: 28 @17788 has 359 MA's), (38, 17821), (68, 17977), (69, 17983), (72, 17992), (82, 18058), (95, 18142), (111, 18244), (117, 18286),

Gene: IsaacEli_23 Start: 17818, Stop: 18336, Start Num: 28

Candidate Starts for IsaacEli_23:

(6, 17263), (7, 17317), (9, 17332), (10, 17341), (16, 17458), (18, 17500), (20, 17545), (26, 17764), (Start: 28 @17818 has 359 MA's), (38, 17851), (68, 18007), (69, 18013), (72, 18022), (82, 18088), (95, 18172), (111, 18274), (117, 18316),

Gene: ItsyBitsy1_25 Start: 19903, Stop: 20463, Start Num: 27

Candidate Starts for ItsyBitsy1_25:

(Start: 25 @19741 has 1 MA's), (Start: 27 @19903 has 45 MA's), (Start: 30 @19921 has 11 MA's), (31, 19924), (38, 19951), (42, 19963), (56, 20035), (63, 20092), (69, 20128), (74, 20179), (80, 20212), (102, 20359), (116, 20437),

Gene: JAMaL_21 Start: 18616, Stop: 19146, Start Num: 28

Candidate Starts for JAMaL_21:

(Start: 28 @18616 has 359 MA's), (35, 18646), (41, 18664), (52, 18715), (68, 18814), (69, 18820), (75, 18868), (82, 18898), (83, 18901), (85, 18907), (87, 18919), (89, 18934), (96, 18988), (98, 19006), (108, 19066),

Gene: JDog_22 Start: 17524, Stop: 18042, Start Num: 28

Candidate Starts for JDog_22:

(26, 17470), (Start: 28 @17524 has 359 MA's), (38, 17557), (68, 17713), (69, 17719), (72, 17728), (82, 17794), (95, 17878), (111, 17980), (117, 18022),

Gene: JacAttac_23 Start: 17800, Stop: 18318, Start Num: 28

Candidate Starts for JacAttac_23:

(6, 17245), (7, 17299), (9, 17314), (10, 17323), (16, 17440), (18, 17482), (20, 17527), (26, 17746), (Start: 28 @17800 has 359 MA's), (38, 17833), (68, 17989), (69, 17995), (72, 18004), (82, 18070), (95, 18154), (111, 18256), (117, 18298),

Gene: Jackstina_22 Start: 18402, Stop: 18923, Start Num: 28

Candidate Starts for Jackstina_22:

(Start: 28 @18402 has 359 MA's), (37, 18432), (43, 18450), (47, 18462), (62, 18567), (82, 18690), (84, 18696), (86, 18705), (95, 18774), (106, 18831),

Gene: JaguarMi_21 Start: 17897, Stop: 18427, Start Num: 28

Candidate Starts for JaguarMi_21:

(8, 17408), (Start: 24 @17729 has 1 MA's), (Start: 28 @17897 has 359 MA's), (35, 17927), (52, 17996), (73, 18131), (75, 18149), (83, 18182), (85, 18188), (87, 18200), (89, 18215), (96, 18269), (108, 18347),

Gene: JakeO_22 Start: 17524, Stop: 18042, Start Num: 28

Candidate Starts for JakeO_22:

(26, 17470), (Start: 28 @17524 has 359 MA's), (38, 17557), (68, 17713), (69, 17719), (72, 17728), (82, 17794), (95, 17878), (111, 17980), (117, 18022),

Gene: JangoPhett_23 Start: 17798, Stop: 18316, Start Num: 28

Candidate Starts for JangoPhett_23:

(6, 17243), (7, 17297), (9, 17312), (10, 17321), (16, 17438), (18, 17480), (20, 17525), (26, 17744), (Start: 28 @17798 has 359 MA's), (38, 17831), (68, 17987), (69, 17993), (72, 18002), (82, 18068), (95, 18152), (111, 18254), (117, 18296),

Gene: Jeon_17 Start: 17286, Stop: 17807, Start Num: 30

Candidate Starts for Jeon_17:

(26, 17232), (Start: 30 @17286 has 11 MA's), (35, 17307), (45, 17337), (55, 17394), (56, 17400), (61, 17439), (69, 17472), (75, 17526), (76, 17532), (78, 17547), (87, 17586), (90, 17604), (109, 17733), (110, 17742), (112, 17751), (117, 17787),

Gene: Jillium_22 Start: 17524, Stop: 18042, Start Num: 28

Candidate Starts for Jillium_22:

(6, 16969), (7, 17023), (9, 17038), (10, 17047), (16, 17164), (18, 17206), (20, 17251), (26, 17470), (Start: 28 @17524 has 359 MA's), (38, 17557), (68, 17713), (69, 17719), (72, 17728), (82, 17794), (95,

17878), (111, 17980), (117, 18022),

Gene: Jiminy_22 Start: 17362, Stop: 17880, Start Num: 28

Candidate Starts for Jiminy_22:

(26, 17308), (Start: 28 @17362 has 359 MA's), (38, 17395), (68, 17551), (69, 17557), (72, 17566), (82, 17632), (95, 17716), (111, 17818), (117, 17860),

Gene: Jiraiya_23 Start: 17522, Stop: 18040, Start Num: 28

Candidate Starts for Jiraiya_23:

(26, 17468), (Start: 28 @17522 has 359 MA's), (38, 17555), (68, 17711), (69, 17717), (72, 17726), (82, 17792), (95, 17876), (111, 17978), (117, 18020),

Gene: Jolie1_019 Start: 16953, Stop: 17501, Start Num: 27

Candidate Starts for Jolie1_019:

(26, 16902), (Start: 27 @16953 has 45 MA's), (35, 16986), (41, 17004), (45, 17016), (47, 17022), (69, 17169), (72, 17178), (82, 17247), (83, 17250), (87, 17268), (89, 17283), (96, 17349), (97, 17355), (117, 17481),

Gene: KLucky39_23 Start: 17806, Stop: 18324, Start Num: 28

Candidate Starts for KLucky39_23:

(26, 17752), (Start: 28 @17806 has 359 MA's), (38, 17839), (68, 17995), (69, 18001), (72, 18010), (82, 18076), (95, 18160), (111, 18262), (117, 18304),

Gene: Kahve_22 Start: 17528, Stop: 18046, Start Num: 28

Candidate Starts for Kahve_22:

(26, 17474), (Start: 28 @17528 has 359 MA's), (38, 17561), (68, 17717), (69, 17723), (72, 17732), (82, 17798), (95, 17882), (111, 17984), (117, 18026),

Gene: Kailash_23 Start: 17816, Stop: 18334, Start Num: 28

Candidate Starts for Kailash_23:

(2, 17210), (6, 17261), (7, 17315), (9, 17330), (10, 17339), (16, 17456), (18, 17498), (20, 17543), (26, 17762), (Start: 28 @17816 has 359 MA's), (38, 17849), (68, 18005), (69, 18011), (72, 18020), (82, 18086), (95, 18170), (111, 18272), (117, 18314),

Gene: Kaleb_25 Start: 20029, Stop: 20589, Start Num: 27

Candidate Starts for Kaleb_25:

(Start: 25 @19867 has 1 MA's), (Start: 27 @20029 has 45 MA's), (Start: 30 @20047 has 11 MA's), (31, 20050), (38, 20077), (42, 20089), (56, 20161), (63, 20218), (69, 20254), (74, 20305), (80, 20338), (102, 20485), (116, 20563),

Gene: Kamiyu_24 Start: 18445, Stop: 18966, Start Num: 28

Candidate Starts for Kamiyu_24:

(Start: 28 @18445 has 359 MA's), (37, 18475), (43, 18493), (47, 18505), (62, 18610), (82, 18733), (84, 18739), (86, 18748), (95, 18817), (106, 18874),

Gene: KarasumaRum_25 Start: 18677, Stop: 19168, Start Num: 28

Candidate Starts for KarasumaRum_25:

(26, 18623), (Start: 28 @18677 has 359 MA's), (41, 18710), (42, 18713), (45, 18722), (69, 18848), (82, 18926), (87, 18947), (88, 18959), (103, 19067), (113, 19130),

Gene: Katniss_23 Start: 17826, Stop: 18344, Start Num: 28

Candidate Starts for Katniss_23:

(6, 17271), (7, 17325), (9, 17340), (10, 17349), (16, 17466), (18, 17508), (20, 17553), (26, 17772),
(Start: 28 @17826 has 359 MA's), (38, 17859), (68, 18015), (69, 18021), (72, 18030), (82, 18096), (95,
18180), (111, 18282), (117, 18324),

Gene: KayaCho_19 Start: 16963, Stop: 17511, Start Num: 27

Candidate Starts for KayaCho_19:

(Start: 25 @16798 has 1 MA's), (26, 16912), (Start: 27 @16963 has 45 MA's), (35, 16996), (37,
17002), (56, 17086), (69, 17179), (72, 17188), (82, 17257), (85, 17266), (87, 17278), (89, 17293), (96,
17359), (99, 17389), (110, 17446), (117, 17491),

Gene: Keitherie_23 Start: 17829, Stop: 18347, Start Num: 28

Candidate Starts for Keitherie_23:

(6, 17274), (7, 17328), (9, 17343), (10, 17352), (16, 17469), (18, 17511), (20, 17556), (26, 17775),
(Start: 28 @17829 has 359 MA's), (38, 17862), (68, 18018), (69, 18024), (72, 18033), (82, 18099), (95,
18183), (111, 18285), (117, 18327),

Gene: Kheth_25 Start: 19915, Stop: 20475, Start Num: 27

Candidate Starts for Kheth_25:

(Start: 25 @19753 has 1 MA's), (Start: 27 @19915 has 45 MA's), (Start: 30 @19933 has 11 MA's),
(31, 19936), (38, 19963), (42, 19975), (56, 20047), (63, 20104), (69, 20140), (74, 20191), (80, 20224),
(102, 20371), (116, 20449),

Gene: Kikipoo_23 Start: 17818, Stop: 18336, Start Num: 28

Candidate Starts for Kikipoo_23:

(6, 17263), (7, 17317), (9, 17332), (10, 17341), (16, 17458), (18, 17500), (20, 17545), (26, 17764),
(Start: 28 @17818 has 359 MA's), (38, 17851), (68, 18007), (69, 18013), (72, 18022), (82, 18088), (95,
18172), (111, 18274), (117, 18316),

Gene: Kimbrough_23 Start: 17520, Stop: 18038, Start Num: 28

Candidate Starts for Kimbrough_23:

(6, 16965), (7, 17019), (9, 17034), (10, 17043), (16, 17160), (18, 17202), (20, 17247), (26, 17466),
(Start: 28 @17520 has 359 MA's), (38, 17553), (68, 17709), (69, 17715), (72, 17724), (82, 17790), (95,
17874), (111, 17976), (117, 18018),

Gene: KingVeVeVe_23 Start: 17797, Stop: 18315, Start Num: 28

Candidate Starts for KingVeVeVe_23:

(26, 17743), (Start: 28 @17797 has 359 MA's), (38, 17830), (68, 17986), (69, 17992), (72, 18001), (82,
18067), (95, 18151), (111, 18253), (117, 18295),

Gene: KlimbOn_23 Start: 17806, Stop: 18324, Start Num: 28

Candidate Starts for KlimbOn_23:

(26, 17752), (Start: 28 @17806 has 359 MA's), (38, 17839), (68, 17995), (69, 18001), (72, 18010), (82,
18076), (95, 18160), (111, 18262), (117, 18304),

Gene: Kloppinator_23 Start: 17826, Stop: 18344, Start Num: 28

Candidate Starts for Kloppinator_23:

(6, 17271), (7, 17325), (9, 17340), (10, 17349), (16, 17466), (18, 17508), (20, 17553), (26, 17772),
(Start: 28 @17826 has 359 MA's), (38, 17859), (68, 18015), (69, 18021), (72, 18030), (82, 18096), (95,
18180), (111, 18282), (117, 18324),

Gene: Knocker_25 Start: 20941, Stop: 21450, Start Num: 28

Candidate Starts for Knocker_25:

(26, 20887), (Start: 28 @20941 has 359 MA's), (32, 20953), (35, 20965), (41, 20983), (42, 20986), (46, 20989), (49, 21013), (67, 21112), (69, 21124), (71, 21130), (87, 21223), (90, 21241), (96, 21292), (100, 21328), (101, 21331), (110, 21385), (113, 21412),

Gene: Kronus_23 Start: 19059, Stop: 19580, Start Num: 28

Candidate Starts for Kronus_23:

(Start: 28 @19059 has 359 MA's), (37, 19089), (43, 19107), (47, 19119), (62, 19224), (82, 19347), (84, 19353), (86, 19362), (95, 19431), (106, 19488),

Gene: Kwadwo_22 Start: 17510, Stop: 18028, Start Num: 28

Candidate Starts for Kwadwo_22:

(6, 16955), (7, 17009), (9, 17024), (10, 17033), (16, 17150), (18, 17192), (20, 17237), (26, 17456), (Start: 28 @17510 has 359 MA's), (38, 17543), (68, 17699), (69, 17705), (72, 17714), (82, 17780), (95, 17864), (111, 17966), (117, 18008),

Gene: Kwksand96_22 Start: 17372, Stop: 17890, Start Num: 28

Candidate Starts for Kwksand96_22:

(2, 16766), (6, 16817), (7, 16871), (9, 16886), (10, 16895), (16, 17012), (18, 17054), (20, 17099), (26, 17318), (Start: 28 @17372 has 359 MA's), (38, 17405), (68, 17561), (69, 17567), (72, 17576), (82, 17642), (95, 17726), (111, 17828), (117, 17870),

Gene: Labeouficaum_22 Start: 17368, Stop: 17886, Start Num: 28

Candidate Starts for Labeouficaum_22:

(6, 16813), (7, 16867), (9, 16882), (10, 16891), (16, 17008), (18, 17050), (20, 17095), (26, 17314), (Start: 28 @17368 has 359 MA's), (38, 17401), (68, 17557), (69, 17563), (72, 17572), (82, 17638), (95, 17722), (111, 17824), (117, 17866),

Gene: Lambano_20 Start: 17403, Stop: 17933, Start Num: 28

Candidate Starts for Lambano_20:

(8, 16914), (14, 16947), (Start: 24 @17235 has 1 MA's), (Start: 28 @17403 has 359 MA's), (35, 17433), (52, 17502), (69, 17607), (73, 17637), (75, 17655), (83, 17688), (85, 17694), (87, 17706), (89, 17721), (96, 17775), (108, 17853),

Gene: Lars_25 Start: 20032, Stop: 20592, Start Num: 27

Candidate Starts for Lars_25:

(Start: 25 @19870 has 1 MA's), (Start: 27 @20032 has 45 MA's), (Start: 30 @20050 has 11 MA's), (31, 20053), (38, 20080), (42, 20092), (56, 20164), (63, 20221), (69, 20257), (74, 20308), (80, 20341), (102, 20488), (116, 20566),

Gene: LasagnaCat_23 Start: 17812, Stop: 18330, Start Num: 28

Candidate Starts for LasagnaCat_23:

(6, 17257), (7, 17311), (9, 17326), (10, 17335), (16, 17452), (18, 17494), (20, 17539), (26, 17758), (Start: 28 @17812 has 359 MA's), (38, 17845), (68, 18001), (69, 18007), (72, 18016), (82, 18082), (95, 18166), (111, 18268), (117, 18310),

Gene: Lasso_23 Start: 17785, Stop: 18303, Start Num: 28

Candidate Starts for Lasso_23:

(6, 17230), (7, 17284), (9, 17299), (10, 17308), (16, 17425), (18, 17467), (20, 17512), (26, 17731), (Start: 28 @17785 has 359 MA's), (38, 17818), (68, 17974), (69, 17980), (72, 17989), (82, 18055), (95, 18139), (111, 18241), (117, 18283),

Gene: Laurie_25 Start: 19906, Stop: 20466, Start Num: 27

Candidate Starts for Laurie_25:

(Start: 27 @19906 has 45 MA's), (Start: 30 @19924 has 11 MA's), (38, 19954), (42, 19966), (56, 20038), (63, 20095), (69, 20131), (74, 20182), (80, 20215), (102, 20362), (116, 20440),

Gene: LeeLot_23 Start: 17810, Stop: 18328, Start Num: 28

Candidate Starts for LeeLot_23:

(6, 17255), (7, 17309), (9, 17324), (10, 17333), (16, 17450), (18, 17492), (20, 17537), (26, 17756), (Start: 28 @17810 has 359 MA's), (38, 17843), (68, 17999), (69, 18005), (72, 18014), (82, 18080), (95, 18164), (111, 18266), (117, 18308),

Gene: Lego3393_23 Start: 17822, Stop: 18340, Start Num: 28

Candidate Starts for Lego3393_23:

(6, 17267), (7, 17321), (9, 17336), (10, 17345), (16, 17462), (18, 17504), (20, 17549), (26, 17768), (Start: 28 @17822 has 359 MA's), (38, 17855), (68, 18011), (69, 18017), (72, 18026), (82, 18092), (95, 18176), (111, 18278), (117, 18320),

Gene: Legolas_22 Start: 17526, Stop: 18044, Start Num: 28

Candidate Starts for Legolas_22:

(6, 16971), (7, 17025), (9, 17040), (10, 17049), (16, 17166), (18, 17208), (20, 17253), (26, 17472), (Start: 28 @17526 has 359 MA's), (38, 17559), (68, 17715), (69, 17721), (72, 17730), (82, 17796), (95, 17880), (111, 17982), (117, 18024),

Gene: LeiMonet_23 Start: 17517, Stop: 18035, Start Num: 28

Candidate Starts for LeiMonet_23:

(26, 17463), (Start: 28 @17517 has 359 MA's), (38, 17550), (68, 17706), (69, 17712), (72, 17721), (82, 17787), (95, 17871), (111, 17973), (117, 18015),

Gene: LemonSlice_23 Start: 17517, Stop: 18035, Start Num: 28

Candidate Starts for LemonSlice_23:

(6, 16962), (7, 17016), (9, 17031), (10, 17040), (16, 17157), (18, 17199), (20, 17244), (26, 17463), (Start: 28 @17517 has 359 MA's), (38, 17550), (68, 17706), (69, 17712), (72, 17721), (82, 17787), (95, 17871), (111, 17973), (117, 18015),

Gene: Lephleur_25 Start: 19912, Stop: 20472, Start Num: 27

Candidate Starts for Lephleur_25:

(Start: 25 @19750 has 1 MA's), (Start: 27 @19912 has 45 MA's), (Start: 30 @19930 has 11 MA's), (31, 19933), (38, 19960), (42, 19972), (56, 20044), (63, 20101), (69, 20137), (74, 20188), (80, 20221), (102, 20368), (116, 20446),

Gene: LestyG_24 Start: 18480, Stop: 19001, Start Num: 28

Candidate Starts for LestyG_24:

(Start: 28 @18480 has 359 MA's), (37, 18510), (62, 18645), (82, 18768), (84, 18774), (86, 18783), (95, 18852), (106, 18909),

Gene: Ligma_20 Start: 16345, Stop: 16893, Start Num: 28

Candidate Starts for Ligma_20:

(21, 16072), (23, 16159), (Start: 25 @16177 has 1 MA's), (26, 16291), (Start: 28 @16345 has 359 MA's), (31, 16363), (45, 16411), (82, 16636), (87, 16657), (89, 16672), (113, 16852), (115, 16861),

Gene: LilMcDreamy_20 Start: 18494, Stop: 18985, Start Num: 28

Candidate Starts for LilMcDreamy_20:

(26, 18440), (Start: 28 @18494 has 359 MA's), (42, 18530), (45, 18539), (56, 18581), (69, 18665), (82, 18743), (85, 18752), (87, 18764), (94, 18809), (119, 18974), (120, 18980),

Gene: LittleMunchkin_22 Start: 19184, Stop: 19726, Start Num: 28

Candidate Starts for LittleMunchkin_22:

(26, 19130), (Start: 28 @19184 has 359 MA's), (31, 19202), (34, 19217), (45, 19250), (87, 19496), (89, 19511), (113, 19688), (115, 19697),

Gene: LizLemon_25 Start: 20029, Stop: 20589, Start Num: 27

Candidate Starts for LizLemon_25:

(Start: 25 @19867 has 1 MA's), (Start: 27 @20029 has 45 MA's), (Start: 30 @20047 has 11 MA's), (31, 20050), (38, 20077), (42, 20089), (56, 20161), (63, 20218), (69, 20254), (74, 20305), (80, 20338), (102, 20485), (116, 20563),

Gene: Lolalove_21 Start: 18432, Stop: 18962, Start Num: 28

Candidate Starts for Lolalove_21:

(Start: 28 @18432 has 359 MA's), (35, 18462), (52, 18531), (69, 18636), (73, 18666), (75, 18684), (83, 18717), (85, 18723), (87, 18735), (96, 18804), (108, 18882),

Gene: Longacauda_22 Start: 17512, Stop: 18030, Start Num: 28

Candidate Starts for Longacauda_22:

(2, 16906), (6, 16957), (7, 17011), (9, 17026), (10, 17035), (16, 17152), (18, 17194), (20, 17239), (26, 17458), (Start: 28 @17512 has 359 MA's), (38, 17545), (68, 17701), (69, 17707), (72, 17716), (82, 17782), (95, 17866), (111, 17968), (117, 18010),

Gene: Lopsy_22 Start: 17368, Stop: 17886, Start Num: 28

Candidate Starts for Lopsy_22:

(26, 17314), (Start: 28 @17368 has 359 MA's), (38, 17401), (68, 17557), (69, 17563), (72, 17572), (82, 17638), (95, 17722), (111, 17824), (117, 17866),

Gene: LostAndPhound_22 Start: 17519, Stop: 18037, Start Num: 28

Candidate Starts for LostAndPhound_22:

(26, 17465), (Start: 28 @17519 has 359 MA's), (38, 17552), (68, 17708), (69, 17714), (72, 17723), (82, 17789), (95, 17873), (111, 17975), (117, 18017),

Gene: LuckyMarjie_22 Start: 17532, Stop: 18050, Start Num: 28

Candidate Starts for LuckyMarjie_22:

(6, 16977), (7, 17031), (9, 17046), (10, 17055), (16, 17172), (18, 17214), (20, 17259), (26, 17478), (Start: 28 @17532 has 359 MA's), (38, 17565), (68, 17721), (69, 17727), (72, 17736), (82, 17802), (95, 17886), (111, 17988), (117, 18030),

Gene: Lulumae_22 Start: 17510, Stop: 18028, Start Num: 28

Candidate Starts for Lulumae_22:

(6, 16955), (7, 17009), (9, 17024), (10, 17033), (16, 17150), (18, 17192), (20, 17237), (26, 17456), (Start: 28 @17510 has 359 MA's), (38, 17543), (68, 17699), (69, 17705), (72, 17714), (82, 17780), (95, 17864), (111, 17966), (117, 18008),

Gene: Lulwa_23 Start: 17797, Stop: 18315, Start Num: 28

Candidate Starts for Lulwa_23:

(6, 17242), (7, 17296), (9, 17311), (10, 17320), (16, 17437), (18, 17479), (20, 17524), (26, 17743), (Start: 28 @17797 has 359 MA's), (38, 17830), (68, 17986), (69, 17992), (72, 18001), (82, 18067), (95, 18151), (111, 18253), (117, 18295),

Gene: Lumine_22 Start: 17506, Stop: 18024, Start Num: 28

Candidate Starts for Lumine_22:

(6, 16951), (7, 17005), (9, 17020), (10, 17029), (16, 17146), (18, 17188), (20, 17233), (26, 17452), (Start: 28 @17506 has 359 MA's), (38, 17539), (68, 17695), (69, 17701), (72, 17710), (82, 17776), (95, 17860), (111, 17962), (117, 18004),

Gene: MRabcd_22 Start: 17511, Stop: 18029, Start Num: 28

Candidate Starts for MRabcd_22:

(6, 16956), (7, 17010), (9, 17025), (10, 17034), (16, 17151), (18, 17193), (20, 17238), (26, 17457), (Start: 28 @17511 has 359 MA's), (38, 17544), (68, 17700), (69, 17706), (72, 17715), (82, 17781), (95, 17865), (111, 17967), (117, 18009),

Gene: Mag7_22 Start: 17366, Stop: 17884, Start Num: 28

Candidate Starts for Mag7_22:

(2, 16760), (6, 16811), (7, 16865), (9, 16880), (10, 16889), (16, 17006), (18, 17048), (20, 17093), (26, 17312), (Start: 28 @17366 has 359 MA's), (38, 17399), (68, 17555), (69, 17561), (72, 17570), (82, 17636), (95, 17720), (111, 17822), (117, 17864),

Gene: Magic8_23 Start: 17804, Stop: 18322, Start Num: 28

Candidate Starts for Magic8_23:

(2, 17198), (6, 17249), (7, 17303), (9, 17318), (10, 17327), (16, 17444), (18, 17486), (20, 17531), (26, 17750), (Start: 28 @17804 has 359 MA's), (38, 17837), (68, 17993), (69, 17999), (72, 18008), (82, 18074), (95, 18158), (111, 18260), (117, 18302),

Gene: Magpie_20 Start: 18255, Stop: 18785, Start Num: 28

Candidate Starts for Magpie_20:

(Start: 24 @18087 has 1 MA's), (Start: 28 @18255 has 359 MA's), (35, 18285), (52, 18354), (69, 18459), (73, 18489), (75, 18507), (83, 18540), (85, 18546), (87, 18558), (89, 18573), (96, 18627), (108, 18705),

Gene: MakoManhole_22 Start: 17734, Stop: 18273, Start Num: 27

Candidate Starts for MakoManhole_22:

(26, 17683), (Start: 27 @17734 has 45 MA's), (45, 17800), (72, 17956), (79, 18016), (82, 18025), (87, 18046), (99, 18145), (103, 18166), (113, 18235), (115, 18244),

Gene: Mana_22 Start: 17513, Stop: 18031, Start Num: 28

Candidate Starts for Mana_22:

(26, 17459), (Start: 28 @17513 has 359 MA's), (38, 17546), (68, 17702), (69, 17708), (72, 17717), (82, 17783), (95, 17867), (111, 17969), (117, 18011),

Gene: Manad_22 Start: 17363, Stop: 17881, Start Num: 28

Candidate Starts for Manad_22:

(26, 17309), (Start: 28 @17363 has 359 MA's), (38, 17396), (68, 17552), (69, 17558), (72, 17567), (82, 17633), (95, 17717), (111, 17819), (117, 17861),

Gene: Mao1_19 Start: 15827, Stop: 16372, Start Num: 30

Candidate Starts for Mao1_19:

(22, 15641), (Start: 25 @15662 has 1 MA's), (26, 15773), (Start: 27 @15824 has 45 MA's), (Start: 30 @15827 has 11 MA's), (45, 15878), (50, 15908), (56, 15941), (58, 15968), (60, 15980), (65, 16010), (69, 16037), (79, 16121), (80, 16124), (87, 16151), (90, 16169), (117, 16352),

Gene: Mariokart_20 Start: 16235, Stop: 16783, Start Num: 27

Candidate Starts for Mariokart_20:

(23, 16052), (Start: 25 @16070 has 1 MA's), (26, 16184), (Start: 27 @16235 has 45 MA's), (45, 16301), (81, 16523), (87, 16547), (89, 16562), (99, 16646), (115, 16751),

Gene: Marley1013_24 Start: 19258, Stop: 19779, Start Num: 28

Candidate Starts for Marley1013_24:

(Start: 28 @19258 has 359 MA's), (37, 19288), (43, 19306), (47, 19318), (62, 19423), (82, 19546), (84, 19552), (86, 19561), (93, 19597), (95, 19630), (106, 19687),

Gene: Maru_22 Start: 17512, Stop: 18030, Start Num: 28

Candidate Starts for Maru_22:

(26, 17458), (Start: 28 @17512 has 359 MA's), (38, 17545), (68, 17701), (69, 17707), (72, 17716), (82, 17782), (95, 17866), (111, 17968), (117, 18010),

Gene: Mask_20 Start: 15828, Stop: 16373, Start Num: 30

Candidate Starts for Mask_20:

(22, 15642), (Start: 25 @15663 has 1 MA's), (26, 15774), (Start: 27 @15825 has 45 MA's), (Start: 30 @15828 has 11 MA's), (45, 15879), (50, 15909), (56, 15942), (58, 15969), (60, 15981), (65, 16011), (69, 16038), (79, 16122), (80, 16125), (87, 16152), (90, 16170), (117, 16353),

Gene: Maskar_22 Start: 17358, Stop: 17876, Start Num: 28

Candidate Starts for Maskar_22:

(26, 17304), (Start: 28 @17358 has 359 MA's), (38, 17391), (68, 17547), (69, 17553), (72, 17562), (82, 17628), (95, 17712), (111, 17814), (117, 17856),

Gene: MasterPo_25 Start: 19912, Stop: 20472, Start Num: 27

Candidate Starts for MasterPo_25:

(Start: 25 @19750 has 1 MA's), (Start: 27 @19912 has 45 MA's), (Start: 30 @19930 has 11 MA's), (31, 19933), (38, 19960), (42, 19972), (56, 20044), (63, 20101), (69, 20137), (74, 20188), (80, 20221), (102, 20368), (116, 20446),

Gene: Matalotodo_23 Start: 17805, Stop: 18323, Start Num: 28

Candidate Starts for Matalotodo_23:

(6, 17250), (7, 17304), (9, 17319), (10, 17328), (16, 17445), (18, 17487), (20, 17532), (26, 17751), (Start: 28 @17805 has 359 MA's), (38, 17838), (68, 17994), (69, 18000), (72, 18009), (82, 18075), (95, 18159), (111, 18261), (117, 18303),

Gene: Mcshane_22 Start: 17508, Stop: 18026, Start Num: 28

Candidate Starts for Mcshane_22:

(6, 16953), (7, 17007), (9, 17022), (10, 17031), (16, 17148), (18, 17190), (20, 17235), (26, 17454), (Start: 28 @17508 has 359 MA's), (38, 17541), (68, 17697), (69, 17703), (72, 17712), (82, 17778), (95, 17862), (111, 17964), (117, 18006),

Gene: Mecca_22 Start: 17505, Stop: 18023, Start Num: 28

Candidate Starts for Mecca_22:

(26, 17451), (Start: 28 @17505 has 359 MA's), (38, 17538), (68, 17694), (69, 17700), (72, 17709), (82, 17775), (95, 17859), (111, 17961), (117, 18003),

Gene: Megabear_17 Start: 17229, Stop: 17750, Start Num: 30

Candidate Starts for Megabear_17:

(26, 17175), (Start: 30 @17229 has 11 MA's), (45, 17280), (50, 17310), (55, 17337), (56, 17343), (69, 17415), (75, 17469), (76, 17475), (78, 17490), (87, 17529), (90, 17547), (109, 17676), (110, 17685), (112, 17694), (117, 17730),

Gene: Megamind20_23 Start: 17526, Stop: 18044, Start Num: 28

Candidate Starts for Megamind20_23:

(26, 17472), (Start: 28 @17526 has 359 MA's), (38, 17559), (68, 17715), (69, 17721), (72, 17730), (82, 17796), (95, 17880), (111, 17982), (117, 18024),

Gene: Megatron_23 Start: 17809, Stop: 18327, Start Num: 28

Candidate Starts for Megatron_23:

(6, 17254), (7, 17308), (9, 17323), (10, 17332), (16, 17449), (18, 17491), (20, 17536), (26, 17755), (Start: 28 @17809 has 359 MA's), (38, 17842), (68, 17998), (69, 18004), (72, 18013), (82, 18079), (95, 18163), (111, 18265), (117, 18307),

Gene: Melc17_23 Start: 17800, Stop: 18318, Start Num: 28

Candidate Starts for Melc17_23:

(2, 17194), (6, 17245), (7, 17299), (9, 17314), (10, 17323), (16, 17440), (18, 17482), (20, 17527), (26, 17746), (Start: 28 @17800 has 359 MA's), (38, 17833), (68, 17989), (69, 17995), (72, 18004), (82, 18070), (95, 18154), (111, 18256), (117, 18298),

Gene: MelsMeow_22 Start: 17366, Stop: 17884, Start Num: 28

Candidate Starts for MelsMeow_22:

(2, 16760), (6, 16811), (7, 16865), (9, 16880), (10, 16889), (16, 17006), (18, 17048), (20, 17093), (26, 17312), (Start: 28 @17366 has 359 MA's), (38, 17399), (68, 17555), (69, 17561), (72, 17570), (82, 17636), (95, 17720), (111, 17822), (117, 17864),

Gene: Mesh1_23 Start: 17817, Stop: 18335, Start Num: 28

Candidate Starts for Mesh1_23:

(6, 17262), (7, 17316), (9, 17331), (10, 17340), (16, 17457), (18, 17499), (20, 17544), (26, 17763), (Start: 28 @17817 has 359 MA's), (38, 17850), (68, 18006), (69, 18012), (72, 18021), (82, 18087), (95, 18171), (111, 18273), (117, 18315),

Gene: MichaelPhcott_22 Start: 17366, Stop: 17884, Start Num: 28

Candidate Starts for MichaelPhcott_22:

(2, 16760), (6, 16811), (7, 16865), (9, 16880), (10, 16889), (16, 17006), (18, 17048), (20, 17093), (26, 17312), (Start: 28 @17366 has 359 MA's), (38, 17399), (68, 17555), (69, 17561), (72, 17570), (82, 17636), (95, 17720), (111, 17822), (117, 17864),

Gene: Mikota_23 Start: 17793, Stop: 18311, Start Num: 28

Candidate Starts for Mikota_23:

(26, 17739), (Start: 28 @17793 has 359 MA's), (38, 17826), (68, 17982), (69, 17988), (72, 17997), (82, 18063), (95, 18147), (111, 18249), (117, 18291),

Gene: MiniBoss_23 Start: 17796, Stop: 18314, Start Num: 28

Candidate Starts for MiniBoss_23:

(26, 17742), (Start: 28 @17796 has 359 MA's), (38, 17829), (68, 17985), (69, 17991), (72, 18000), (82, 18066), (95, 18150), (111, 18252), (117, 18294),

Gene: MitKao_23 Start: 17514, Stop: 18032, Start Num: 28

Candidate Starts for MitKao_23:

(6, 16959), (7, 17013), (9, 17028), (10, 17037), (16, 17154), (18, 17196), (20, 17241), (26, 17460), (Start: 28 @17514 has 359 MA's), (38, 17547), (68, 17703), (69, 17709), (72, 17718), (82, 17784), (95, 17868), (111, 17970), (117, 18012),

Gene: Mithril_21 Start: 18436, Stop: 18966, Start Num: 28

Candidate Starts for Mithril_21:

(Start: 24 @18268 has 1 MA's), (Start: 28 @18436 has 359 MA's), (35, 18466), (52, 18535), (69, 18640), (73, 18670), (75, 18688), (83, 18721), (85, 18727), (87, 18739), (89, 18754), (96, 18808),

(108, 18886),

Gene: MmasiCarm_24 Start: 18471, Stop: 18992, Start Num: 28

Candidate Starts for MmasiCarm_24:

(Start: 28 @18471 has 359 MA's), (37, 18501), (43, 18519), (47, 18531), (62, 18636), (82, 18759), (84, 18765), (86, 18774), (95, 18843), (106, 18900),

Gene: Morgushi_23 Start: 17519, Stop: 18037, Start Num: 28

Candidate Starts for Morgushi_23:

(26, 17465), (Start: 28 @17519 has 359 MA's), (38, 17552), (68, 17708), (69, 17714), (72, 17723), (82, 17789), (95, 17873), (111, 17975), (117, 18017),

Gene: Mortcellus_23 Start: 19114, Stop: 19635, Start Num: 28

Candidate Starts for Mortcellus_23:

(Start: 28 @19114 has 359 MA's), (37, 19144), (43, 19162), (47, 19174), (62, 19279), (82, 19402), (84, 19408), (86, 19417), (95, 19486), (106, 19543),

Gene: Morty_23 Start: 17818, Stop: 18336, Start Num: 28

Candidate Starts for Morty_23:

(6, 17263), (7, 17317), (9, 17332), (10, 17341), (16, 17458), (18, 17500), (20, 17545), (26, 17764), (Start: 28 @17818 has 359 MA's), (38, 17851), (68, 18007), (69, 18013), (72, 18022), (82, 18088), (95, 18172), (111, 18274), (117, 18316),

Gene: Morty007_24 Start: 19258, Stop: 19779, Start Num: 28

Candidate Starts for Morty007_24:

(Start: 28 @19258 has 359 MA's), (37, 19288), (43, 19306), (47, 19318), (62, 19423), (82, 19546), (84, 19552), (86, 19561), (93, 19597), (95, 19630), (106, 19687),

Gene: Mosaic_22 Start: 17520, Stop: 18038, Start Num: 28

Candidate Starts for Mosaic_22:

(6, 16965), (7, 17019), (9, 17034), (10, 17043), (16, 17160), (18, 17202), (20, 17247), (26, 17466), (Start: 28 @17520 has 359 MA's), (38, 17553), (68, 17709), (69, 17715), (72, 17724), (82, 17790), (95, 17874), (111, 17976), (117, 18018),

Gene: MossRose_22 Start: 17713, Stop: 18252, Start Num: 27

Candidate Starts for MossRose_22:

(26, 17662), (Start: 27 @17713 has 45 MA's), (45, 17779), (72, 17935), (79, 17995), (82, 18004), (87, 18025), (99, 18124), (103, 18145), (113, 18214), (115, 18223),

Gene: MrPhizzler_22 Start: 17519, Stop: 18037, Start Num: 28

Candidate Starts for MrPhizzler_22:

(26, 17465), (Start: 28 @17519 has 359 MA's), (38, 17552), (68, 17708), (69, 17714), (72, 17723), (82, 17789), (95, 17873), (111, 17975), (117, 18017),

Gene: Mudslide_21 Start: 18683, Stop: 19213, Start Num: 28

Candidate Starts for Mudslide_21:

(Start: 24 @18515 has 1 MA's), (Start: 28 @18683 has 359 MA's), (35, 18713), (45, 18743), (52, 18782), (69, 18887), (73, 18917), (75, 18935), (83, 18968), (85, 18974), (87, 18986), (89, 19001), (96, 19055), (108, 19133),

Gene: Mulan_22 Start: 17514, Stop: 18032, Start Num: 28

Candidate Starts for Mulan_22:

(26, 17460), (Start: 28 @17514 has 359 MA's), (38, 17547), (68, 17703), (69, 17709), (72, 17718), (82, 17784), (95, 17868), (111, 17970), (117, 18012),

Gene: Murdoc_23 Start: 17807, Stop: 18325, Start Num: 28

Candidate Starts for Murdoc_23:

(6, 17252), (7, 17306), (9, 17321), (10, 17330), (16, 17447), (18, 17489), (20, 17534), (26, 17753), (Start: 28 @17807 has 359 MA's), (38, 17840), (68, 17996), (69, 18002), (72, 18011), (82, 18077), (95, 18161), (111, 18263), (117, 18305),

Gene: Mutante_22 Start: 17517, Stop: 18035, Start Num: 28

Candidate Starts for Mutante_22:

(6, 16962), (7, 17016), (9, 17031), (10, 17040), (16, 17157), (18, 17199), (20, 17244), (26, 17463), (Start: 28 @17517 has 359 MA's), (38, 17550), (68, 17706), (69, 17712), (72, 17721), (82, 17787), (95, 17871), (111, 17973), (117, 18015),

Gene: Mysterious_24 Start: 18806, Stop: 19297, Start Num: 28

Candidate Starts for Mysterious_24:

(26, 18752), (Start: 28 @18806 has 359 MA's), (42, 18842), (45, 18851), (48, 18860), (56, 18893), (66, 18962), (69, 18977), (82, 19055), (87, 19076), (88, 19088), (92, 19103), (102, 19193), (113, 19259), (119, 19286),

Gene: NHagos_20 Start: 16255, Stop: 16794, Start Num: 27

Candidate Starts for NHagos_20:

(26, 16204), (Start: 27 @16255 has 45 MA's), (38, 16300), (72, 16477), (82, 16546), (83, 16549), (85, 16555), (89, 16582), (90, 16585), (115, 16765),

Gene: Nacho_0023 Start: 17806, Stop: 18324, Start Num: 28

Candidate Starts for Nacho_0023:

(26, 17752), (Start: 28 @17806 has 359 MA's), (38, 17839), (68, 17995), (69, 18001), (72, 18010), (82, 18076), (95, 18160), (111, 18262), (117, 18304),

Gene: Nanao_20 Start: 17402, Stop: 17932, Start Num: 28

Candidate Starts for Nanao_20:

(8, 16913), (14, 16946), (Start: 24 @17234 has 1 MA's), (Start: 28 @17402 has 359 MA's), (35, 17432), (52, 17501), (69, 17606), (73, 17636), (75, 17654), (83, 17687), (85, 17693), (87, 17705), (89, 17720), (96, 17774), (108, 17852),

Gene: Nangang_23 Start: 18505, Stop: 18996, Start Num: 28

Candidate Starts for Nangang_23:

(26, 18451), (Start: 28 @18505 has 359 MA's), (42, 18541), (45, 18550), (56, 18592), (69, 18676), (82, 18754), (87, 18775), (88, 18787), (103, 18895), (113, 18958),

Gene: Nehemiah_22 Start: 18806, Stop: 19297, Start Num: 28

Candidate Starts for Nehemiah_22:

(26, 18752), (Start: 28 @18806 has 359 MA's), (42, 18842), (45, 18851), (48, 18860), (56, 18893), (66, 18962), (69, 18977), (82, 19055), (87, 19076), (88, 19088), (92, 19103), (102, 19193), (113, 19259), (119, 19286),

Gene: Neos5_24 Start: 19268, Stop: 19789, Start Num: 28

Candidate Starts for Neos5_24:

(Start: 28 @19268 has 359 MA's), (37, 19298), (43, 19316), (47, 19328), (62, 19433), (82, 19556), (84, 19562), (86, 19571), (95, 19640), (106, 19697),

Gene: Newman_23 Start: 17806, Stop: 18324, Start Num: 28

Candidate Starts for Newman_23:

(26, 17752), (Start: 28 @17806 has 359 MA's), (38, 17839), (68, 17995), (69, 18001), (72, 18010), (82, 18076), (95, 18160), (111, 18262), (117, 18304),

Gene: Nicole21_23 Start: 17798, Stop: 18316, Start Num: 28

Candidate Starts for Nicole21_23:

(6, 17243), (7, 17297), (9, 17312), (10, 17321), (16, 17438), (18, 17480), (20, 17525), (26, 17744), (Start: 28 @17798 has 359 MA's), (38, 17831), (68, 17987), (69, 17993), (72, 18002), (82, 18068), (95, 18152), (111, 18254), (117, 18296),

Gene: Nigel_19 Start: 17285, Stop: 17815, Start Num: 28

Candidate Starts for Nigel_19:

(Start: 28 @17285 has 359 MA's), (35, 17315), (41, 17333), (52, 17384), (53, 17387), (69, 17489), (75, 17537), (82, 17567), (83, 17570), (85, 17576), (87, 17588), (89, 17603), (96, 17657), (98, 17675), (108, 17735),

Gene: Nozo_24 Start: 19238, Stop: 19759, Start Num: 28

Candidate Starts for Nozo_24:

(Start: 28 @19238 has 359 MA's), (37, 19268), (43, 19286), (47, 19298), (62, 19403), (82, 19526), (84, 19532), (86, 19541), (95, 19610), (106, 19667),

Gene: Numberten_23 Start: 17811, Stop: 18329, Start Num: 28

Candidate Starts for Numberten_23:

(6, 17256), (7, 17310), (9, 17325), (10, 17334), (16, 17451), (18, 17493), (20, 17538), (26, 17757), (Start: 28 @17811 has 359 MA's), (38, 17844), (68, 18000), (69, 18006), (72, 18015), (82, 18081), (95, 18165), (111, 18267), (117, 18309),

Gene: Nyala_22 Start: 17509, Stop: 18027, Start Num: 28

Candidate Starts for Nyala_22:

(26, 17455), (Start: 28 @17509 has 359 MA's), (38, 17542), (68, 17698), (69, 17704), (72, 17713), (82, 17779), (95, 17863), (111, 17965), (117, 18007),

Gene: OSmaximus_23 Start: 17818, Stop: 18336, Start Num: 28

Candidate Starts for OSmaximus_23:

(6, 17263), (7, 17317), (9, 17332), (10, 17341), (16, 17458), (18, 17500), (20, 17545), (26, 17764), (Start: 28 @17818 has 359 MA's), (38, 17851), (68, 18007), (69, 18013), (72, 18022), (82, 18088), (95, 18172), (111, 18274), (117, 18316),

Gene: Obutu_24 Start: 18471, Stop: 18992, Start Num: 28

Candidate Starts for Obutu_24:

(Start: 28 @18471 has 359 MA's), (37, 18501), (43, 18519), (47, 18531), (62, 18636), (82, 18759), (84, 18765), (86, 18774), (95, 18843), (106, 18900),

Gene: Olak_22 Start: 17510, Stop: 18028, Start Num: 28

Candidate Starts for Olak_22:

(6, 16955), (7, 17009), (9, 17024), (10, 17033), (16, 17150), (18, 17192), (20, 17237), (26, 17456), (Start: 28 @17510 has 359 MA's), (38, 17543), (68, 17699), (69, 17705), (72, 17714), (82, 17780), (95, 17864), (111, 17966), (117, 18008),

Gene: Oline_22 Start: 17372, Stop: 17890, Start Num: 28

Candidate Starts for Oline_22:

(26, 17318), (Start: 28 @17372 has 359 MA's), (38, 17405), (68, 17561), (69, 17567), (72, 17576), (82, 17642), (95, 17726), (111, 17828), (117, 17870),

Gene: Olive_23 Start: 17799, Stop: 18317, Start Num: 28

Candidate Starts for Olive_23:

(26, 17745), (Start: 28 @17799 has 359 MA's), (38, 17832), (68, 17988), (69, 17994), (72, 18003), (82, 18069), (95, 18153), (111, 18255), (117, 18297),

Gene: OliverWalter_23 Start: 17815, Stop: 18333, Start Num: 28

Candidate Starts for OliverWalter_23:

(26, 17761), (Start: 28 @17815 has 359 MA's), (38, 17848), (68, 18004), (69, 18010), (72, 18019), (82, 18085), (95, 18169), (111, 18271), (117, 18313),

Gene: Omniscient_23 Start: 17818, Stop: 18336, Start Num: 28

Candidate Starts for Omniscient_23:

(6, 17263), (7, 17317), (9, 17332), (10, 17341), (16, 17458), (18, 17500), (20, 17545), (26, 17764), (Start: 28 @17818 has 359 MA's), (38, 17851), (68, 18007), (69, 18013), (72, 18022), (82, 18088), (95, 18172), (111, 18274), (117, 18316),

Gene: Oosterbaan_23 Start: 17810, Stop: 18328, Start Num: 28

Candidate Starts for Oosterbaan_23:

(6, 17255), (7, 17309), (9, 17324), (10, 17333), (16, 17450), (18, 17492), (20, 17537), (26, 17756), (Start: 28 @17810 has 359 MA's), (38, 17843), (68, 17999), (69, 18005), (72, 18014), (82, 18080), (95, 18164), (111, 18266), (117, 18308),

Gene: Opia_25 Start: 19912, Stop: 20472, Start Num: 27

Candidate Starts for Opia_25:

(Start: 25 @19750 has 1 MA's), (Start: 27 @19912 has 45 MA's), (Start: 30 @19930 has 11 MA's), (31, 19933), (38, 19960), (42, 19972), (56, 20044), (63, 20101), (69, 20137), (74, 20188), (80, 20221), (102, 20368), (116, 20446),

Gene: OrangeOswald_24 Start: 18476, Stop: 18997, Start Num: 28

Candidate Starts for OrangeOswald_24:

(Start: 28 @18476 has 359 MA's), (37, 18506), (43, 18524), (47, 18536), (62, 18641), (82, 18764), (84, 18770), (86, 18779), (95, 18848), (106, 18905),

Gene: Orfeu_22 Start: 17509, Stop: 18027, Start Num: 28

Candidate Starts for Orfeu_22:

(6, 16954), (7, 17008), (9, 17023), (10, 17032), (16, 17149), (18, 17191), (20, 17236), (26, 17455), (Start: 28 @17509 has 359 MA's), (38, 17542), (68, 17698), (69, 17704), (72, 17713), (82, 17779), (95, 17863), (111, 17965), (117, 18007),

Gene: Orion_23 Start: 17807, Stop: 18325, Start Num: 28

Candidate Starts for Orion_23:

(26, 17753), (Start: 28 @17807 has 359 MA's), (38, 17840), (68, 17996), (69, 18002), (72, 18011), (82, 18077), (95, 18161), (111, 18263), (117, 18305),

Gene: Orwigg_23 Start: 17504, Stop: 18022, Start Num: 28

Candidate Starts for Orwigg_23:

(6, 16949), (7, 17003), (9, 17018), (10, 17027), (16, 17144), (18, 17186), (20, 17231), (26, 17450), (Start: 28 @17504 has 359 MA's), (38, 17537), (68, 17693), (69, 17699), (72, 17708), (82, 17774), (95, 17858), (111, 17960), (117, 18002),

Gene: PG1_23 Start: 17820, Stop: 18338, Start Num: 28

Candidate Starts for PG1_23:

(26, 17766), (Start: 28 @17820 has 359 MA's), (38, 17853), (68, 18009), (69, 18015), (72, 18024), (82, 18090), (95, 18174), (111, 18276), (117, 18318),

Gene: PR_17 Start: 17256, Stop: 17777, Start Num: 30

Candidate Starts for PR_17:

(26, 17202), (Start: 30 @17256 has 11 MA's), (45, 17307), (50, 17337), (52, 17349), (55, 17364), (56, 17370), (69, 17442), (75, 17496), (76, 17502), (78, 17517), (87, 17556), (90, 17574), (109, 17703), (110, 17712), (112, 17721), (117, 17757),

Gene: Pacifista_22 Start: 17511, Stop: 18029, Start Num: 28

Candidate Starts for Pacifista_22:

(6, 16956), (7, 17010), (9, 17025), (10, 17034), (16, 17151), (18, 17193), (20, 17238), (26, 17457), (Start: 28 @17511 has 359 MA's), (38, 17544), (68, 17700), (69, 17706), (72, 17715), (82, 17781), (95, 17865), (111, 17967), (117, 18009),

Gene: PenguinLover67_25 Start: 20039, Stop: 20563, Start Num: 28

Candidate Starts for PenguinLover67_25:

(16, 19676), (Start: 25 @19871 has 1 MA's), (Start: 28 @20039 has 359 MA's), (36, 20069), (37, 20072), (56, 20153), (69, 20237), (72, 20246), (82, 20315), (87, 20336), (89, 20351), (100, 20441), (113, 20525),

Gene: Phaedrus_22 Start: 18392, Stop: 18913, Start Num: 28

Candidate Starts for Phaedrus_22:

(Start: 28 @18392 has 359 MA's), (37, 18422), (43, 18440), (47, 18452), (62, 18557), (82, 18680), (84, 18686), (86, 18695), (95, 18764), (106, 18821),

Gene: Phamished_23 Start: 17815, Stop: 18333, Start Num: 28

Candidate Starts for Phamished_23:

(6, 17260), (7, 17314), (9, 17329), (10, 17338), (16, 17455), (18, 17497), (20, 17542), (26, 17761), (Start: 28 @17815 has 359 MA's), (38, 17848), (68, 18004), (69, 18010), (72, 18019), (82, 18085), (95, 18169), (111, 18271), (117, 18313),

Gene: Phantasmagoria_25 Start: 19908, Stop: 20468, Start Num: 27

Candidate Starts for Phantasmagoria_25:

(Start: 25 @19746 has 1 MA's), (Start: 27 @19908 has 45 MA's), (Start: 30 @19926 has 11 MA's), (31, 19929), (38, 19956), (42, 19968), (56, 20040), (63, 20097), (69, 20133), (74, 20184), (80, 20217), (102, 20364), (116, 20442),

Gene: Phareon_23 Start: 17515, Stop: 18033, Start Num: 28

Candidate Starts for Phareon_23:

(26, 17461), (Start: 28 @17515 has 359 MA's), (38, 17548), (68, 17704), (69, 17710), (72, 17719), (82, 17785), (95, 17869), (111, 17971), (117, 18013),

Gene: PhatCats2014_23 Start: 17825, Stop: 18343, Start Num: 28

Candidate Starts for PhatCats2014_23:

(6, 17270), (7, 17324), (9, 17339), (10, 17348), (16, 17465), (18, 17507), (20, 17552), (26, 17771), (Start: 28 @17825 has 359 MA's), (38, 17858), (68, 18014), (69, 18020), (72, 18029), (82, 18095), (95, 18179), (111, 18281), (117, 18323),

Gene: PhatLouie_23 Start: 17807, Stop: 18325, Start Num: 28

Candidate Starts for PhatLouie_23:

(2, 17201), (6, 17252), (7, 17306), (9, 17321), (10, 17330), (16, 17447), (18, 17489), (20, 17534), (26, 17753), (Start: 28 @17807 has 359 MA's), (38, 17840), (68, 17996), (69, 18002), (72, 18011), (82, 18077), (95, 18161), (111, 18263), (117, 18305),

Gene: Phayeta_24 Start: 18352, Stop: 18873, Start Num: 28

Candidate Starts for Phayeta_24:

(Start: 28 @18352 has 359 MA's), (37, 18382), (43, 18400), (47, 18412), (62, 18517), (82, 18640), (84, 18646), (86, 18655), (95, 18724), (106, 18781),

Gene: Phelemich_23 Start: 18802, Stop: 19293, Start Num: 28

Candidate Starts for Phelemich_23:

(26, 18748), (Start: 28 @18802 has 359 MA's), (42, 18838), (45, 18847), (48, 18856), (56, 18889), (66, 18958), (69, 18973), (82, 19051), (87, 19072), (88, 19084), (92, 19099), (102, 19189), (113, 19255), (119, 19282),

Gene: PhenghisKhan_22 Start: 17366, Stop: 17884, Start Num: 28

Candidate Starts for PhenghisKhan_22:

(2, 16760), (6, 16811), (7, 16865), (9, 16880), (10, 16889), (16, 17006), (18, 17048), (20, 17093), (26, 17312), (Start: 28 @17366 has 359 MA's), (38, 17399), (68, 17555), (69, 17561), (72, 17570), (82, 17636), (95, 17720), (111, 17822), (117, 17864),

Gene: Pherdinand_23 Start: 17815, Stop: 18333, Start Num: 28

Candidate Starts for Pherdinand_23:

(6, 17260), (7, 17314), (9, 17329), (10, 17338), (16, 17455), (18, 17497), (20, 17542), (26, 17761), (Start: 28 @17815 has 359 MA's), (38, 17848), (68, 18004), (69, 18010), (72, 18019), (82, 18085), (95, 18169), (111, 18271), (117, 18313),

Gene: Phergie_22 Start: 17360, Stop: 17878, Start Num: 28

Candidate Starts for Phergie_22:

(2, 16754), (6, 16805), (7, 16859), (9, 16874), (10, 16883), (16, 17000), (18, 17042), (20, 17087), (26, 17306), (Start: 28 @17360 has 359 MA's), (38, 17393), (68, 17549), (69, 17555), (72, 17564), (82, 17630), (95, 17714), (111, 17816), (117, 17858),

Gene: Philly_23 Start: 18342, Stop: 18863, Start Num: 28

Candidate Starts for Philly_23:

(Start: 28 @18342 has 359 MA's), (37, 18372), (43, 18390), (47, 18402), (62, 18507), (82, 18630), (84, 18636), (86, 18645), (95, 18714), (106, 18771),

Gene: Phipps_23 Start: 17785, Stop: 18303, Start Num: 28

Candidate Starts for Phipps_23:

(6, 17230), (7, 17284), (9, 17299), (10, 17308), (16, 17425), (18, 17467), (20, 17512), (26, 17731), (Start: 28 @17785 has 359 MA's), (38, 17818), (68, 17974), (69, 17980), (72, 17989), (82, 18055), (95, 18139), (111, 18241), (117, 18283),

Gene: Phleuron_22 Start: 17366, Stop: 17884, Start Num: 28

Candidate Starts for Phleuron_22:

(2, 16760), (6, 16811), (7, 16865), (9, 16880), (10, 16889), (16, 17006), (18, 17048), (20, 17093), (26, 17312), (Start: 28 @17366 has 359 MA's), (38, 17399), (68, 17555), (69, 17561), (72, 17570), (82, 17636), (95, 17720), (111, 17822), (117, 17864),

Gene: Phlyer_24 Start: 19211, Stop: 19732, Start Num: 28

Candidate Starts for Phlyer_24:

(Start: 28 @19211 has 359 MA's), (37, 19241), (43, 19259), (47, 19271), (62, 19376), (82, 19499), (84, 19505), (86, 19514), (95, 19583), (106, 19640),

Gene: PhrankReynolds_22 Start: 17366, Stop: 17884, Start Num: 28

Candidate Starts for PhrankReynolds_22:

(2, 16760), (6, 16811), (7, 16865), (9, 16880), (10, 16889), (16, 17006), (18, 17048), (20, 17093), (26, 17312), (Start: 28 @17366 has 359 MA's), (38, 17399), (68, 17555), (69, 17561), (72, 17570), (82, 17636), (95, 17720), (111, 17822), (117, 17864),

Gene: PhrodoBaggins_22 Start: 17803, Stop: 18321, Start Num: 28

Candidate Starts for PhrodoBaggins_22:

(6, 17248), (7, 17302), (9, 17317), (10, 17326), (16, 17443), (18, 17485), (20, 17530), (26, 17749), (Start: 28 @17803 has 359 MA's), (38, 17836), (68, 17992), (69, 17998), (72, 18007), (82, 18073), (95, 18157), (111, 18259), (117, 18301),

Gene: Phunky_23 Start: 17809, Stop: 18327, Start Num: 28

Candidate Starts for Phunky_23:

(6, 17254), (7, 17308), (9, 17323), (10, 17332), (16, 17449), (18, 17491), (20, 17536), (26, 17755), (Start: 28 @17809 has 359 MA's), (38, 17842), (68, 17998), (69, 18004), (72, 18013), (82, 18079), (95, 18163), (111, 18265), (117, 18307),

Gene: Piglet_0022 Start: 17809, Stop: 18327, Start Num: 28

Candidate Starts for Piglet_0022:

(26, 17755), (Start: 28 @17809 has 359 MA's), (38, 17842), (68, 17998), (69, 18004), (72, 18013), (82, 18079), (95, 18163), (111, 18265), (117, 18307),

Gene: Pine5_23 Start: 18642, Stop: 19172, Start Num: 33

Candidate Starts for Pine5_23:

(33, 18642), (34, 18654), (56, 18747), (71, 18843), (85, 18924), (99, 19035), (103, 19056),

Gene: PinheadLarry_23 Start: 17526, Stop: 18044, Start Num: 28

Candidate Starts for PinheadLarry_23:

(26, 17472), (Start: 28 @17526 has 359 MA's), (38, 17559), (68, 17715), (69, 17721), (72, 17730), (82, 17796), (95, 17880), (111, 17982), (117, 18024),

Gene: Pinkman_22 Start: 17366, Stop: 17884, Start Num: 28

Candidate Starts for Pinkman_22:

(2, 16760), (6, 16811), (7, 16865), (9, 16880), (10, 16889), (16, 17006), (18, 17048), (20, 17093), (26, 17312), (Start: 28 @17366 has 359 MA's), (38, 17399), (68, 17555), (69, 17561), (72, 17570), (82, 17636), (95, 17720), (111, 17822), (117, 17864),

Gene: Pipefish_24 Start: 19358, Stop: 19879, Start Num: 28

Candidate Starts for Pipefish_24:

(Start: 28 @19358 has 359 MA's), (37, 19388), (43, 19406), (62, 19523), (82, 19646), (84, 19652), (86, 19661), (95, 19730), (106, 19787),

Gene: Pipsqueak_23 Start: 17815, Stop: 18333, Start Num: 28

Candidate Starts for Pipsqueak_23:

(26, 17761), (Start: 28 @17815 has 359 MA's), (38, 17848), (68, 18004), (69, 18010), (72, 18019), (82, 18085), (95, 18169), (111, 18271), (117, 18313),

Gene: Placalicious_22 Start: 17508, Stop: 18026, Start Num: 28

Candidate Starts for Placalicious_22:

(6, 16953), (7, 17007), (9, 17022), (10, 17031), (16, 17148), (18, 17190), (20, 17235), (26, 17454), (Start: 28 @17508 has 359 MA's), (38, 17541), (68, 17697), (69, 17703), (72, 17712), (82, 17778), (95, 17862), (111, 17964), (117, 18006),

Gene: Plmatters_23 Start: 17812, Stop: 18330, Start Num: 28

Candidate Starts for Plmatters_23:

(6, 17257), (7, 17311), (9, 17326), (10, 17335), (16, 17452), (18, 17494), (20, 17539), (26, 17758), (Start: 28 @17812 has 359 MA's), (38, 17845), (68, 18001), (69, 18007), (72, 18016), (82, 18082), (95, 18166), (111, 18268), (117, 18310),

Gene: Podrick_23 Start: 17804, Stop: 18322, Start Num: 28

Candidate Starts for Podrick_23:

(6, 17249), (7, 17303), (9, 17318), (10, 17327), (16, 17444), (18, 17486), (20, 17531), (26, 17750), (Start: 28 @17804 has 359 MA's), (38, 17837), (68, 17993), (69, 17999), (72, 18008), (82, 18074), (95, 18158), (111, 18260), (117, 18302),

Gene: Pops_23 Start: 17812, Stop: 18330, Start Num: 28

Candidate Starts for Pops_23:

(6, 17257), (7, 17311), (9, 17326), (10, 17335), (16, 17452), (18, 17494), (20, 17539), (26, 17758), (Start: 28 @17812 has 359 MA's), (38, 17845), (68, 18001), (69, 18007), (72, 18016), (82, 18082), (95, 18166), (111, 18268), (117, 18310),

Gene: Poster_20 Start: 17403, Stop: 17933, Start Num: 28

Candidate Starts for Poster_20:

(8, 16914), (14, 16947), (Start: 24 @17235 has 1 MA's), (Start: 28 @17403 has 359 MA's), (35, 17433), (52, 17502), (69, 17607), (73, 17637), (75, 17655), (83, 17688), (85, 17694), (87, 17706), (89, 17721), (96, 17775), (108, 17853),

Gene: Potter_22 Start: 17522, Stop: 18040, Start Num: 28

Candidate Starts for Potter_22:

(26, 17468), (Start: 28 @17522 has 359 MA's), (38, 17555), (68, 17711), (69, 17717), (72, 17726), (82, 17792), (95, 17876), (111, 17978), (117, 18020),

Gene: Prickles_23 Start: 17801, Stop: 18319, Start Num: 28

Candidate Starts for Prickles_23:

(26, 17747), (Start: 28 @17801 has 359 MA's), (38, 17834), (68, 17990), (69, 17996), (72, 18005), (82, 18071), (95, 18155), (111, 18257), (117, 18299),

Gene: Prince_21 Start: 18595, Stop: 19125, Start Num: 28

Candidate Starts for Prince_21:

(Start: 24 @18427 has 1 MA's), (Start: 28 @18595 has 359 MA's), (35, 18625), (52, 18694), (69, 18799), (73, 18829), (75, 18847), (83, 18880), (85, 18886), (87, 18898), (89, 18913), (96, 18967), (99, 18997), (108, 19045),

Gene: ProfessorX_23 Start: 17799, Stop: 18317, Start Num: 28

Candidate Starts for ProfessorX_23:

(26, 17745), (Start: 28 @17799 has 359 MA's), (38, 17832), (68, 17988), (69, 17994), (72, 18003), (82, 18069), (95, 18153), (111, 18255), (117, 18297),

Gene: Puhltonio_23 Start: 17815, Stop: 18333, Start Num: 28

Candidate Starts for Puhltonio_23:

(6, 17260), (7, 17314), (9, 17329), (10, 17338), (16, 17455), (18, 17497), (20, 17542), (26, 17761), (Start: 28 @17815 has 359 MA's), (38, 17848), (68, 18004), (69, 18010), (72, 18019), (82, 18085), (95,

18169), (111, 18271), (117, 18313),

Gene: QueenBeane_23 Start: 17807, Stop: 18325, Start Num: 28

Candidate Starts for QueenBeane_23:

(26, 17753), (Start: 28 @17807 has 359 MA's), (38, 17840), (68, 17996), (69, 18002), (72, 18011), (82, 18077), (95, 18161), (111, 18263), (117, 18305),

Gene: QueenPie_20 Start: 18601, Stop: 19131, Start Num: 28

Candidate Starts for QueenPie_20:

(Start: 24 @18433 has 1 MA's), (Start: 28 @18601 has 359 MA's), (35, 18631), (41, 18649), (52, 18700), (69, 18805), (73, 18835), (75, 18853), (82, 18883), (83, 18886), (85, 18892), (87, 18904), (89, 18919), (96, 18973), (108, 19051),

Gene: Quesadilla_24 Start: 19939, Stop: 20463, Start Num: 28

Candidate Starts for Quesadilla_24:

(4, 19366), (14, 19480), (18, 19618), (Start: 25 @19771 has 1 MA's), (Start: 28 @19939 has 359 MA's), (56, 20053), (72, 20146), (82, 20215), (89, 20251), (97, 20311), (100, 20341), (108, 20383), (113, 20425),

Gene: Quisquilliae_23 Start: 17822, Stop: 18340, Start Num: 28

Candidate Starts for Quisquilliae_23:

(6, 17267), (7, 17321), (9, 17336), (10, 17345), (16, 17462), (18, 17504), (20, 17549), (26, 17768), (Start: 28 @17822 has 359 MA's), (38, 17855), (68, 18011), (69, 18017), (72, 18026), (82, 18092), (95, 18176), (111, 18278), (117, 18320),

Gene: Qyrzula_23 Start: 19836, Stop: 20558, Start Num: 25

Candidate Starts for Qyrzula_23:

(Start: 25 @19836 has 1 MA's), (Start: 27 @19998 has 45 MA's), (Start: 30 @20016 has 11 MA's), (31, 20019), (38, 20046), (42, 20058), (56, 20130), (63, 20187), (69, 20223), (74, 20274), (80, 20307), (102, 20454), (116, 20532),

Gene: RagingRooster_24 Start: 18477, Stop: 18998, Start Num: 28

Candidate Starts for RagingRooster_24:

(Start: 28 @18477 has 359 MA's), (37, 18507), (62, 18642), (82, 18765), (84, 18771), (86, 18780), (95, 18849), (106, 18906),

Gene: RawrgerThat_21 Start: 18432, Stop: 18962, Start Num: 28

Candidate Starts for RawrgerThat_21:

(Start: 24 @18264 has 1 MA's), (Start: 28 @18432 has 359 MA's), (35, 18462), (52, 18531), (69, 18636), (73, 18666), (75, 18684), (83, 18717), (85, 18723), (87, 18735), (89, 18750), (96, 18804), (99, 18834), (108, 18882),

Gene: RedMaple_22 Start: 17818, Stop: 18336, Start Num: 28

Candidate Starts for RedMaple_22:

(26, 17764), (Start: 28 @17818 has 359 MA's), (38, 17851), (68, 18007), (69, 18013), (72, 18022), (82, 18088), (95, 18172), (111, 18274), (117, 18316),

Gene: Reprobate_23 Start: 18807, Stop: 19298, Start Num: 28

Candidate Starts for Reprobate_23:

(26, 18753), (Start: 28 @18807 has 359 MA's), (42, 18843), (45, 18852), (48, 18861), (56, 18894), (66, 18963), (69, 18978), (82, 19056), (87, 19077), (88, 19089), (92, 19104), (102, 19194), (113, 19260), (119, 19287),

Gene: Rhinoforte_25 Start: 20029, Stop: 20589, Start Num: 27

Candidate Starts for Rhinoforte_25:

(Start: 25 @19867 has 1 MA's), (Start: 27 @20029 has 45 MA's), (Start: 30 @20047 has 11 MA's), (38, 20077), (42, 20089), (56, 20161), (63, 20218), (69, 20254), (74, 20305), (80, 20338), (102, 20485), (116, 20563),

Gene: Rich_22 Start: 18309, Stop: 18800, Start Num: 28

Candidate Starts for Rich_22:

(11, 17835), (13, 17841), (15, 17853), (17, 17949), (19, 17991), (26, 18255), (Start: 28 @18309 has 359 MA's), (42, 18345), (45, 18354), (56, 18396), (69, 18480), (82, 18558), (87, 18579), (88, 18591), (90, 18597), (102, 18696), (113, 18762),

Gene: Ricotta_22 Start: 17530, Stop: 18048, Start Num: 28

Candidate Starts for Ricotta_22:

(6, 16975), (7, 17029), (9, 17044), (10, 17053), (16, 17170), (18, 17212), (20, 17257), (26, 17476), (Start: 28 @17530 has 359 MA's), (38, 17563), (68, 17719), (69, 17725), (72, 17734), (82, 17800), (95, 17884), (111, 17986), (117, 18028),

Gene: Riggan_23 Start: 17790, Stop: 18308, Start Num: 28

Candidate Starts for Riggan_23:

(6, 17235), (7, 17289), (9, 17304), (10, 17313), (16, 17430), (18, 17472), (20, 17517), (26, 17736), (Start: 28 @17790 has 359 MA's), (38, 17823), (68, 17979), (69, 17985), (72, 17994), (82, 18060), (95, 18144), (111, 18246), (117, 18288),

Gene: Rimu_23 Start: 17519, Stop: 18037, Start Num: 28

Candidate Starts for Rimu_23:

(2, 16913), (6, 16964), (7, 17018), (9, 17033), (10, 17042), (16, 17159), (18, 17201), (20, 17246), (26, 17465), (Start: 28 @17519 has 359 MA's), (38, 17552), (68, 17708), (69, 17714), (72, 17723), (82, 17789), (95, 17873), (111, 17975), (117, 18017),

Gene: Rinke_26 Start: 20820, Stop: 21332, Start Num: 28

Candidate Starts for Rinke_26:

(Start: 28 @20820 has 359 MA's), (41, 20862), (42, 20865), (54, 20916), (69, 21003), (85, 21090), (87, 21102), (90, 21120), (96, 21171), (100, 21207), (101, 21210), (111, 21267), (113, 21291),

Gene: Rita1961_24 Start: 18472, Stop: 18993, Start Num: 28

Candidate Starts for Rita1961_24:

(Start: 28 @18472 has 359 MA's), (37, 18502), (43, 18520), (47, 18532), (62, 18637), (82, 18760), (84, 18766), (86, 18775), (95, 18844), (106, 18901),

Gene: Robyn_22 Start: 17381, Stop: 17899, Start Num: 28

Candidate Starts for Robyn_22:

(26, 17327), (Start: 28 @17381 has 359 MA's), (38, 17414), (68, 17570), (69, 17576), (72, 17585), (82, 17651), (95, 17735), (111, 17837), (117, 17879),

Gene: Roliet_23 Start: 17806, Stop: 18324, Start Num: 28

Candidate Starts for Roliet_23:

(26, 17752), (Start: 28 @17806 has 359 MA's), (38, 17839), (68, 17995), (69, 18001), (72, 18010), (82, 18076), (95, 18160), (111, 18262), (117, 18304),

Gene: RomaT_24 Start: 19256, Stop: 19780, Start Num: 28

Candidate Starts for RomaT_24:

(Start: 28 @19256 has 359 MA's), (37, 19289), (43, 19307), (62, 19424), (82, 19547), (84, 19553), (86, 19562), (95, 19631), (106, 19688),

Gene: Roscoe_24 Start: 18048, Stop: 18566, Start Num: 28

Candidate Starts for Roscoe_24:

(26, 17994), (Start: 28 @18048 has 359 MA's), (38, 18081), (68, 18237), (69, 18243), (72, 18252), (82, 18318), (95, 18402), (111, 18504), (117, 18546),

Gene: Rosebush_25 Start: 20029, Stop: 20589, Start Num: 27

Candidate Starts for Rosebush_25:

(Start: 25 @19867 has 1 MA's), (Start: 27 @20029 has 45 MA's), (Start: 30 @20047 has 11 MA's), (31, 20050), (38, 20077), (42, 20089), (56, 20161), (63, 20218), (69, 20254), (74, 20305), (80, 20338), (102, 20485), (116, 20563),

Gene: Roy17_23 Start: 17510, Stop: 18028, Start Num: 28

Candidate Starts for Roy17_23:

(6, 16955), (7, 17009), (9, 17024), (10, 17033), (16, 17150), (18, 17192), (20, 17237), (26, 17456), (Start: 28 @17510 has 359 MA's), (38, 17543), (68, 17699), (69, 17705), (72, 17714), (82, 17780), (95, 17864), (111, 17966), (117, 18008),

Gene: SDcharge11_23 Start: 17788, Stop: 18306, Start Num: 28

Candidate Starts for SDcharge11_23:

(26, 17734), (Start: 28 @17788 has 359 MA's), (38, 17821), (68, 17977), (69, 17983), (72, 17992), (82, 18058), (95, 18142), (111, 18244), (117, 18286),

Gene: Sabella_25 Start: 19915, Stop: 20475, Start Num: 27

Candidate Starts for Sabella_25:

(Start: 25 @19753 has 1 MA's), (Start: 27 @19915 has 45 MA's), (Start: 30 @19933 has 11 MA's), (31, 19936), (38, 19963), (42, 19975), (56, 20047), (63, 20104), (69, 20140), (74, 20191), (80, 20224), (102, 20371), (116, 20449),

Gene: Saguaro_24 Start: 19845, Stop: 20369, Start Num: 28

Candidate Starts for Saguaro_24:

(26, 19791), (Start: 28 @19845 has 359 MA's), (42, 19896), (68, 20043), (69, 20049), (72, 20058), (77, 20106), (82, 20127), (85, 20136), (87, 20148), (89, 20163), (90, 20166), (97, 20223), (99, 20247), (100, 20253), (103, 20268),

Gene: Samaymay_23 Start: 17807, Stop: 18325, Start Num: 28

Candidate Starts for Samaymay_23:

(26, 17753), (Start: 28 @17807 has 359 MA's), (38, 17840), (68, 17996), (69, 18002), (72, 18011), (82, 18077), (95, 18161), (111, 18263), (117, 18305),

Gene: SassyCat97_22 Start: 17516, Stop: 18034, Start Num: 28

Candidate Starts for SassyCat97_22:

(6, 16961), (7, 17015), (9, 17030), (10, 17039), (16, 17156), (18, 17198), (20, 17243), (26, 17462), (Start: 28 @17516 has 359 MA's), (38, 17549), (68, 17705), (69, 17711), (72, 17720), (82, 17786), (95, 17870), (111, 17972), (117, 18014),

Gene: Schadenfreude_22 Start: 17364, Stop: 17882, Start Num: 28

Candidate Starts for Schadenfreude_22:

(6, 16809), (7, 16863), (9, 16878), (10, 16887), (16, 17004), (18, 17046), (20, 17091), (26, 17310), (Start: 28 @17364 has 359 MA's), (38, 17397), (68, 17553), (69, 17559), (72, 17568), (82, 17634), (95, 17718), (111, 17820), (117, 17862),

Gene: Schueller_23 Start: 17507, Stop: 18025, Start Num: 28

Candidate Starts for Schueller_23:

(2, 16901), (6, 16952), (7, 17006), (9, 17021), (10, 17030), (16, 17147), (18, 17189), (20, 17234), (26, 17453), (Start: 28 @17507 has 359 MA's), (38, 17540), (68, 17696), (69, 17702), (72, 17711), (82, 17777), (95, 17861), (111, 17963), (117, 18005),

Gene: Scoot17C_23 Start: 17809, Stop: 18327, Start Num: 28

Candidate Starts for Scoot17C_23:

(26, 17755), (Start: 28 @17809 has 359 MA's), (38, 17842), (68, 17998), (69, 18004), (72, 18013), (82, 18079), (95, 18163), (111, 18265), (117, 18307),

Gene: Scrick_23 Start: 17534, Stop: 18052, Start Num: 28

Candidate Starts for Scrick_23:

(6, 16979), (7, 17033), (9, 17048), (10, 17057), (16, 17174), (18, 17216), (20, 17261), (26, 17480), (Start: 28 @17534 has 359 MA's), (38, 17567), (68, 17723), (69, 17729), (72, 17738), (82, 17804), (95, 17888), (111, 17990), (117, 18032),

Gene: Sejanus_20 Start: 16761, Stop: 17306, Start Num: 30

Candidate Starts for Sejanus_20:

(22, 16575), (Start: 25 @16596 has 1 MA's), (26, 16707), (Start: 27 @16758 has 45 MA's), (Start: 30 @16761 has 11 MA's), (45, 16812), (50, 16842), (56, 16875), (58, 16902), (60, 16914), (65, 16944), (69, 16971), (79, 17055), (80, 17058), (87, 17085), (90, 17103), (117, 17286),

Gene: Selr12_23 Start: 17531, Stop: 18049, Start Num: 28

Candidate Starts for Selr12_23:

(6, 16976), (7, 17030), (9, 17045), (10, 17054), (16, 17171), (18, 17213), (20, 17258), (26, 17477), (Start: 28 @17531 has 359 MA's), (38, 17564), (68, 17720), (69, 17726), (72, 17735), (82, 17801), (95, 17885), (111, 17987), (117, 18029),

Gene: Serendipitous_22 Start: 18365, Stop: 18856, Start Num: 28

Candidate Starts for Serendipitous_22:

(26, 18311), (Start: 28 @18365 has 359 MA's), (42, 18401), (45, 18410), (56, 18452), (69, 18536), (88, 18647), (92, 18662), (102, 18752), (113, 18818),

Gene: Serendipity_23 Start: 17829, Stop: 18347, Start Num: 28

Candidate Starts for Serendipity_23:

(26, 17775), (Start: 28 @17829 has 359 MA's), (38, 17862), (68, 18018), (69, 18024), (72, 18033), (82, 18099), (95, 18183), (111, 18285), (117, 18327),

Gene: Serpentine_0023 Start: 17809, Stop: 18327, Start Num: 28

Candidate Starts for Serpentine_0023:

(26, 17755), (Start: 28 @17809 has 359 MA's), (38, 17842), (68, 17998), (69, 18004), (72, 18013), (82, 18079), (95, 18163), (111, 18265), (117, 18307),

Gene: Shatter_20 Start: 16345, Stop: 16893, Start Num: 28

Candidate Starts for Shatter_20:

(21, 16072), (23, 16159), (Start: 25 @16177 has 1 MA's), (26, 16291), (Start: 28 @16345 has 359 MA's), (31, 16363), (45, 16411), (82, 16636), (87, 16657), (89, 16672), (113, 16852), (115, 16861),

Gene: Sheila_23 Start: 17801, Stop: 18319, Start Num: 28

Candidate Starts for Sheila_23:

(26, 17747), (Start: 28 @17801 has 359 MA's), (38, 17834), (68, 17990), (69, 17996), (72, 18005), (82, 18071), (95, 18155), (111, 18257), (117, 18299),

Gene: Shenyu_23 Start: 18505, Stop: 18996, Start Num: 28

Candidate Starts for Shenyu_23:

(26, 18451), (Start: 28 @18505 has 359 MA's), (42, 18541), (45, 18550), (56, 18592), (69, 18676), (82, 18754), (87, 18775), (88, 18787), (103, 18895), (113, 18958),

Gene: ShiVal_23 Start: 17801, Stop: 18319, Start Num: 28

Candidate Starts for ShiVal_23:

(6, 17246), (7, 17300), (9, 17315), (10, 17324), (16, 17441), (18, 17483), (20, 17528), (26, 17747), (Start: 28 @17801 has 359 MA's), (38, 17834), (68, 17990), (69, 17996), (72, 18005), (82, 18071), (95, 18155), (111, 18257), (117, 18299),

Gene: Sigman_23 Start: 17800, Stop: 18318, Start Num: 28

Candidate Starts for Sigman_23:

(6, 17245), (7, 17299), (9, 17314), (10, 17323), (16, 17440), (18, 17482), (20, 17527), (26, 17746), (Start: 28 @17800 has 359 MA's), (38, 17833), (68, 17989), (69, 17995), (72, 18004), (82, 18070), (95, 18154), (111, 18256), (117, 18298),

Gene: SilverBell_23 Start: 17824, Stop: 18342, Start Num: 28

Candidate Starts for SilverBell_23:

(6, 17269), (7, 17323), (9, 17338), (10, 17347), (16, 17464), (18, 17506), (20, 17551), (26, 17770), (Start: 28 @17824 has 359 MA's), (38, 17857), (68, 18013), (69, 18019), (72, 18028), (82, 18094), (95, 18178), (111, 18280), (117, 18322),

Gene: Simielle_22 Start: 17499, Stop: 18017, Start Num: 28

Candidate Starts for Simielle_22:

(26, 17445), (Start: 28 @17499 has 359 MA's), (38, 17532), (68, 17688), (69, 17694), (72, 17703), (82, 17769), (95, 17853), (111, 17955), (117, 17997),

Gene: SirJeffery_23 Start: 18547, Stop: 19038, Start Num: 28

Candidate Starts for SirJeffery_23:

(26, 18493), (Start: 28 @18547 has 359 MA's), (42, 18583), (45, 18592), (56, 18634), (69, 18718), (82, 18796), (87, 18817), (88, 18829), (90, 18835), (102, 18934), (113, 19000),

Gene: Sisko_20 Start: 16623, Stop: 17171, Start Num: 28

Candidate Starts for Sisko_20:

(23, 16437), (Start: 25 @16455 has 1 MA's), (26, 16569), (Start: 27 @16620 has 45 MA's), (Start: 28 @16623 has 359 MA's), (45, 16689), (83, 16917), (87, 16935), (89, 16950), (111, 17106), (113, 17130), (115, 17139),

Gene: Skippy_23 Start: 17794, Stop: 18312, Start Num: 28

Candidate Starts for Skippy_23:

(6, 17239), (7, 17293), (9, 17308), (10, 17317), (16, 17434), (18, 17476), (20, 17521), (26, 17740), (Start: 28 @17794 has 359 MA's), (38, 17827), (68, 17983), (69, 17989), (72, 17998), (82, 18064), (95, 18148), (111, 18250), (117, 18292),

Gene: Slatt_23 Start: 17823, Stop: 18341, Start Num: 28

Candidate Starts for Slatt_23:

(6, 17268), (7, 17322), (9, 17337), (10, 17346), (16, 17463), (18, 17505), (20, 17550), (26, 17769), (Start: 28 @17823 has 359 MA's), (38, 17856), (68, 18012), (69, 18018), (72, 18027), (82, 18093), (95, 18177), (111, 18279), (117, 18321),

Gene: SlippinJimmy_24 Start: 19241, Stop: 19762, Start Num: 28

Candidate Starts for SlippinJimmy_24:

(Start: 28 @19241 has 359 MA's), (37, 19271), (43, 19289), (47, 19301), (62, 19406), (82, 19529), (84, 19535), (86, 19544), (95, 19613), (106, 19670),

Gene: Soile_23 Start: 17521, Stop: 18039, Start Num: 28

Candidate Starts for Soile_23:

(6, 16966), (7, 17020), (9, 17035), (10, 17044), (16, 17161), (18, 17203), (20, 17248), (26, 17467), (Start: 28 @17521 has 359 MA's), (38, 17554), (68, 17710), (69, 17716), (72, 17725), (82, 17791), (95, 17875), (111, 17977), (117, 18019),

Gene: Solosis_22 Start: 17526, Stop: 18044, Start Num: 28

Candidate Starts for Solosis_22:

(26, 17472), (Start: 28 @17526 has 359 MA's), (38, 17559), (68, 17715), (69, 17721), (72, 17730), (82, 17796), (95, 17880), (111, 17982), (117, 18024),

Gene: Sophia_22 Start: 17519, Stop: 18037, Start Num: 28

Candidate Starts for Sophia_22:

(6, 16964), (7, 17018), (9, 17033), (10, 17042), (16, 17159), (18, 17201), (20, 17246), (26, 17465), (Start: 28 @17519 has 359 MA's), (38, 17552), (68, 17708), (69, 17714), (72, 17723), (82, 17789), (95, 17873), (111, 17975), (117, 18017),

Gene: Soto_23 Start: 17803, Stop: 18321, Start Num: 28

Candidate Starts for Soto_23:

(26, 17749), (Start: 28 @17803 has 359 MA's), (38, 17836), (68, 17992), (69, 17998), (72, 18007), (82, 18073), (95, 18157), (111, 18259), (117, 18301),

Gene: Sour_24 Start: 20334, Stop: 20882, Start Num: 27

Candidate Starts for Sour_24:

(26, 20283), (Start: 27 @20334 has 45 MA's), (37, 20376), (42, 20391), (45, 20400), (56, 20460), (69, 20547), (72, 20556), (82, 20625), (87, 20646), (89, 20661), (113, 20841), (115, 20850),

Gene: Spartan300_23 Start: 17804, Stop: 18322, Start Num: 28

Candidate Starts for Spartan300_23:

(26, 17750), (Start: 28 @17804 has 359 MA's), (38, 17837), (68, 17993), (69, 17999), (72, 18008), (82, 18074), (95, 18158), (111, 18260), (117, 18302),

Gene: Squid_23 Start: 17516, Stop: 18034, Start Num: 28

Candidate Starts for Squid_23:

(6, 16961), (7, 17015), (9, 17030), (10, 17039), (16, 17156), (18, 17198), (20, 17243), (26, 17462), (Start: 28 @17516 has 359 MA's), (38, 17549), (68, 17705), (69, 17711), (72, 17720), (82, 17786), (95, 17870), (111, 17972), (117, 18014),

Gene: Squiggle_23 Start: 17513, Stop: 18031, Start Num: 28

Candidate Starts for Squiggle_23:

(6, 16958), (7, 17012), (9, 17027), (10, 17036), (16, 17153), (18, 17195), (20, 17240), (26, 17459), (Start: 28 @17513 has 359 MA's), (38, 17546), (68, 17702), (69, 17708), (72, 17717), (82, 17783), (95, 17867), (111, 17969), (117, 18011),

Gene: StAugustine_28 Start: 20865, Stop: 21398, Start Num: 27

Candidate Starts for StAugustine_28:

(Start: 27 @20865 has 45 MA's), (45, 20922), (51, 20955), (69, 21075), (95, 21246), (105, 21303), (107, 21318), (111, 21336),

Gene: Stinger_19 Start: 16960, Stop: 17490, Start Num: 28

Candidate Starts for Stinger_19:

(1, 16342), (3, 16363), (5, 16393), (8, 16471), (12, 16492), (Start: 24 @16792 has 1 MA's), (Start: 28 @16960 has 359 MA's), (35, 16990), (52, 17059), (64, 17131), (75, 17212), (82, 17242), (85, 17251), (87, 17263), (89, 17278), (96, 17332), (98, 17350), (99, 17362), (108, 17410),

Gene: StinkyVeggy_25 Start: 18677, Stop: 19168, Start Num: 28

Candidate Starts for StinkyVeggy_25:

(26, 18623), (Start: 28 @18677 has 359 MA's), (41, 18710), (42, 18713), (45, 18722), (69, 18848), (82, 18926), (87, 18947), (88, 18959), (103, 19067), (113, 19130),

Gene: Struggle_22 Start: 17360, Stop: 17878, Start Num: 28

Candidate Starts for Struggle_22:

(26, 17306), (Start: 28 @17360 has 359 MA's), (38, 17393), (68, 17549), (69, 17555), (72, 17564), (82, 17630), (95, 17714), (111, 17816), (117, 17858),

Gene: Suffolk_23 Start: 17806, Stop: 18324, Start Num: 28

Candidate Starts for Suffolk_23:

(26, 17752), (Start: 28 @17806 has 359 MA's), (38, 17839), (68, 17995), (69, 18001), (72, 18010), (82, 18076), (95, 18160), (111, 18262), (117, 18304),

Gene: Suigeneris_23 Start: 18559, Stop: 19050, Start Num: 28

Candidate Starts for Suigeneris_23:

(26, 18505), (Start: 28 @18559 has 359 MA's), (42, 18595), (45, 18604), (56, 18646), (69, 18730), (82, 18808), (87, 18829), (88, 18841), (90, 18847), (113, 19012),

Gene: Surely_23 Start: 17818, Stop: 18336, Start Num: 28

Candidate Starts for Surely_23:

(6, 17263), (7, 17317), (9, 17332), (10, 17341), (16, 17458), (18, 17500), (20, 17545), (26, 17764), (Start: 28 @17818 has 359 MA's), (38, 17851), (68, 18007), (69, 18013), (72, 18022), (82, 18088), (95, 18172), (111, 18274), (117, 18316),

Gene: Swiphy_24 Start: 17807, Stop: 18325, Start Num: 28

Candidate Starts for Swiphy_24:

(2, 17201), (6, 17252), (7, 17306), (9, 17321), (10, 17330), (16, 17447), (18, 17489), (20, 17534), (26, 17753), (Start: 28 @17807 has 359 MA's), (38, 17840), (68, 17996), (69, 18002), (72, 18011), (82, 18077), (95, 18161), (111, 18263), (117, 18305),

Gene: Swish_23 Start: 17801, Stop: 18319, Start Num: 28

Candidate Starts for Swish_23:

(6, 17246), (7, 17300), (9, 17315), (10, 17324), (16, 17441), (18, 17483), (20, 17528), (26, 17747), (Start: 28 @17801 has 359 MA's), (38, 17834), (68, 17990), (69, 17996), (72, 18005), (82, 18071), (95, 18155), (111, 18257), (117, 18299),

Gene: SynergyX_24 Start: 18477, Stop: 18998, Start Num: 28

Candidate Starts for SynergyX_24:

(Start: 28 @18477 has 359 MA's), (37, 18507), (62, 18642), (82, 18765), (84, 18771), (86, 18780), (95, 18849), (106, 18906),

Gene: TA17A_25 Start: 19909, Stop: 20469, Start Num: 27

Candidate Starts for TA17A_25:

(Start: 25 @19747 has 1 MA's), (Start: 27 @19909 has 45 MA's), (Start: 30 @19927 has 11 MA's), (31, 19930), (38, 19957), (42, 19969), (56, 20041), (63, 20098), (69, 20134), (74, 20185), (80, 20218), (102, 20365), (116, 20443),

Gene: TPA2_29 Start: 18558, Stop: 19259, Start Num: 25

Candidate Starts for TPA2_29:

(Start: 25 @18558 has 1 MA's), (26, 18672), (Start: 27 @18723 has 45 MA's), (45, 18789), (56, 18849), (57, 18867), (71, 18945), (72, 18948), (82, 19017), (89, 19053),

Gene: TallGrassMM_23 Start: 17533, Stop: 18051, Start Num: 28

Candidate Starts for TallGrassMM_23:

(6, 16978), (7, 17032), (9, 17047), (10, 17056), (16, 17173), (18, 17215), (20, 17260), (26, 17479), (Start: 28 @17533 has 359 MA's), (38, 17566), (68, 17722), (69, 17728), (72, 17737), (82, 17803), (95, 17887), (111, 17989), (117, 18031),

Gene: Taptic_17 Start: 17229, Stop: 17750, Start Num: 30

Candidate Starts for Taptic_17:

(26, 17175), (Start: 30 @17229 has 11 MA's), (45, 17280), (50, 17310), (55, 17337), (56, 17343), (69, 17415), (75, 17469), (76, 17475), (78, 17490), (87, 17529), (90, 17547), (109, 17676), (110, 17685), (112, 17694), (117, 17730),

Gene: Telesworld_22 Start: 17512, Stop: 18030, Start Num: 28

Candidate Starts for Telesworld_22:

(26, 17458), (Start: 28 @17512 has 359 MA's), (38, 17545), (68, 17701), (69, 17707), (72, 17716), (82, 17782), (95, 17866), (111, 17968), (117, 18010),

Gene: Thonko_22 Start: 16247, Stop: 16792, Start Num: 28

Candidate Starts for Thonko_22:

(Start: 25 @16079 has 1 MA's), (26, 16193), (Start: 28 @16247 has 359 MA's), (Start: 30 @16262 has 11 MA's), (44, 16307), (56, 16376), (69, 16463), (71, 16469), (72, 16472), (79, 16541), (89, 16586), (99, 16670),

Gene: Thora_23 Start: 17817, Stop: 18335, Start Num: 28

Candidate Starts for Thora_23:

(6, 17262), (7, 17316), (9, 17331), (10, 17340), (16, 17457), (18, 17499), (20, 17544), (26, 17763), (Start: 28 @17817 has 359 MA's), (38, 17850), (68, 18006), (69, 18012), (72, 18021), (82, 18087), (95, 18171), (111, 18273), (117, 18315),

Gene: ThreeOh3D2_23 Start: 17816, Stop: 18334, Start Num: 28

Candidate Starts for ThreeOh3D2_23:

(26, 17762), (Start: 28 @17816 has 359 MA's), (38, 17849), (68, 18005), (69, 18011), (72, 18020), (82, 18086), (95, 18170), (111, 18272), (117, 18314),

Gene: Thunderbird_22 Start: 17516, Stop: 18034, Start Num: 28

Candidate Starts for Thunderbird_22:

(26, 17462), (Start: 28 @17516 has 359 MA's), (38, 17549), (68, 17705), (69, 17711), (72, 17720), (82, 17786), (95, 17870), (111, 17972), (117, 18014),

Gene: Timmi_22 Start: 17527, Stop: 18045, Start Num: 28

Candidate Starts for Timmi_22:

(6, 16972), (7, 17026), (9, 17041), (10, 17050), (16, 17167), (18, 17209), (20, 17254), (26, 17473), (Start: 28 @17527 has 359 MA's), (38, 17560), (68, 17716), (69, 17722), (72, 17731), (82, 17797), (95,

17881), (111, 17983), (117, 18025),

Gene: Tinciduntolum_26 Start: 20031, Stop: 20591, Start Num: 27

Candidate Starts for Tinciduntolum_26:

(Start: 25 @19869 has 1 MA's), (Start: 27 @20031 has 45 MA's), (Start: 30 @20049 has 11 MA's), (31, 20052), (38, 20079), (42, 20091), (56, 20163), (63, 20220), (69, 20256), (74, 20307), (80, 20340), (102, 20487), (116, 20565),

Gene: TomBombadil_23 Start: 17812, Stop: 18330, Start Num: 28

Candidate Starts for TomBombadil_23:

(6, 17257), (7, 17311), (9, 17326), (10, 17335), (16, 17452), (18, 17494), (20, 17539), (26, 17758), (Start: 28 @17812 has 359 MA's), (38, 17845), (68, 18001), (69, 18007), (72, 18016), (82, 18082), (95, 18166), (111, 18268), (117, 18310),

Gene: Tomlarah_23 Start: 17802, Stop: 18320, Start Num: 28

Candidate Starts for Tomlarah_23:

(26, 17748), (Start: 28 @17802 has 359 MA's), (38, 17835), (68, 17991), (69, 17997), (72, 18006), (82, 18072), (95, 18156), (111, 18258), (117, 18300),

Gene: Toni_22 Start: 17511, Stop: 18029, Start Num: 28

Candidate Starts for Toni_22:

(6, 16956), (7, 17010), (9, 17025), (10, 17034), (16, 17151), (18, 17193), (20, 17238), (26, 17457), (Start: 28 @17511 has 359 MA's), (38, 17544), (68, 17700), (69, 17706), (72, 17715), (82, 17781), (95, 17865), (111, 17967), (117, 18009),

Gene: Tooj_23 Start: 17813, Stop: 18331, Start Num: 28

Candidate Starts for Tooj_23:

(26, 17759), (Start: 28 @17813 has 359 MA's), (38, 17846), (68, 18002), (69, 18008), (72, 18017), (82, 18083), (95, 18167), (111, 18269), (117, 18311),

Gene: Tres_25 Start: 19912, Stop: 20472, Start Num: 27

Candidate Starts for Tres_25:

(Start: 25 @19750 has 1 MA's), (Start: 27 @19912 has 45 MA's), (Start: 30 @19930 has 11 MA's), (31, 19933), (38, 19960), (42, 19972), (56, 20044), (63, 20101), (69, 20137), (74, 20188), (80, 20221), (102, 20368), (116, 20446),

Gene: True_22 Start: 17515, Stop: 18033, Start Num: 28

Candidate Starts for True_22:

(26, 17461), (Start: 28 @17515 has 359 MA's), (38, 17548), (68, 17704), (69, 17710), (72, 17719), (82, 17785), (95, 17869), (111, 17971), (117, 18013),

Gene: Trypo_23 Start: 17804, Stop: 18322, Start Num: 28

Candidate Starts for Trypo_23:

(2, 17198), (6, 17249), (7, 17303), (9, 17318), (10, 17327), (16, 17444), (18, 17486), (20, 17531), (26, 17750), (Start: 28 @17804 has 359 MA's), (38, 17837), (68, 17993), (69, 17999), (72, 18008), (82, 18074), (95, 18158), (111, 18260), (117, 18302),

Gene: Tydolla_24 Start: 19214, Stop: 19735, Start Num: 28

Candidate Starts for Tydolla_24:

(Start: 28 @19214 has 359 MA's), (37, 19244), (43, 19262), (47, 19274), (62, 19379), (82, 19502), (84, 19508), (86, 19517), (95, 19586), (106, 19643),

Gene: TyrionL_22 Start: 17368, Stop: 17886, Start Num: 28

Candidate Starts for TyrionL_22:

(6, 16813), (7, 16867), (9, 16882), (10, 16891), (16, 17008), (18, 17050), (20, 17095), (26, 17314), (Start: 28 @17368 has 359 MA's), (38, 17401), (68, 17557), (69, 17563), (72, 17572), (82, 17638), (95, 17722), (111, 17824), (117, 17866),

Gene: UAch1_23 Start: 17824, Stop: 18342, Start Num: 28

Candidate Starts for UAch1_23:

(26, 17770), (Start: 28 @17824 has 359 MA's), (38, 17857), (68, 18013), (69, 18019), (72, 18028), (82, 18094), (95, 18178), (111, 18280), (117, 18322),

Gene: UncleHowie_23 Start: 17514, Stop: 18032, Start Num: 28

Candidate Starts for UncleHowie_23:

(26, 17460), (Start: 28 @17514 has 359 MA's), (38, 17547), (68, 17703), (69, 17709), (72, 17718), (82, 17784), (95, 17868), (111, 17970), (117, 18012),

Gene: Usavi_23 Start: 17815, Stop: 18333, Start Num: 28

Candidate Starts for Usavi_23:

(26, 17761), (Start: 28 @17815 has 359 MA's), (38, 17848), (68, 18004), (69, 18010), (72, 18019), (82, 18085), (95, 18169), (111, 18271), (117, 18313),

Gene: Vaishali24_22 Start: 17468, Stop: 17986, Start Num: 28

Candidate Starts for Vaishali24_22:

(26, 17414), (Start: 28 @17468 has 359 MA's), (38, 17501), (68, 17657), (69, 17663), (72, 17672), (82, 17738), (95, 17822), (111, 17924), (117, 17966),

Gene: Valjean_23 Start: 17807, Stop: 18325, Start Num: 28

Candidate Starts for Valjean_23:

(26, 17753), (Start: 28 @17807 has 359 MA's), (38, 17840), (68, 17996), (69, 18002), (72, 18011), (82, 18077), (95, 18161), (111, 18263), (117, 18305),

Gene: Vaticameos_23 Start: 17505, Stop: 18023, Start Num: 28

Candidate Starts for Vaticameos_23:

(26, 17451), (Start: 28 @17505 has 359 MA's), (38, 17538), (68, 17694), (69, 17700), (72, 17709), (82, 17775), (95, 17859), (111, 17961), (117, 18003),

Gene: Veritas_22 Start: 17354, Stop: 17872, Start Num: 28

Candidate Starts for Veritas_22:

(2, 16748), (6, 16799), (7, 16853), (9, 16868), (10, 16877), (16, 16994), (18, 17036), (20, 17081), (26, 17300), (Start: 28 @17354 has 359 MA's), (38, 17387), (68, 17543), (69, 17549), (72, 17558), (82, 17624), (95, 17708), (111, 17810), (117, 17852),

Gene: Vic9_26 Start: 20354, Stop: 20914, Start Num: 27

Candidate Starts for Vic9_26:

(Start: 27 @20354 has 45 MA's), (Start: 30 @20372 has 11 MA's), (31, 20375), (38, 20402), (42, 20414), (56, 20486), (63, 20543), (69, 20579), (74, 20630), (80, 20663), (102, 20810), (116, 20888),

Gene: Vincenzo_22 Start: 19205, Stop: 19732, Start Num: 28

Candidate Starts for Vincenzo_22:

(Start: 28 @19205 has 359 MA's), (35, 19235), (49, 19292), (52, 19304), (69, 19409), (72, 19418), (75, 19457), (82, 19484), (85, 19493), (87, 19505), (89, 19520), (95, 19568), (96, 19574), (108, 19652),

Gene: VioletZ_21 Start: 18491, Stop: 19021, Start Num: 28

Candidate Starts for VioletZ_21:

(8, 18002), (Start: 24 @18323 has 1 MA's), (Start: 28 @18491 has 359 MA's), (35, 18521), (52, 18590), (69, 18695), (73, 18725), (75, 18743), (83, 18776), (85, 18782), (87, 18794), (96, 18863), (108, 18941),

Gene: Virapocalypse_23 Start: 17798, Stop: 18316, Start Num: 28

Candidate Starts for Virapocalypse_23:

(6, 17243), (7, 17297), (9, 17312), (10, 17321), (16, 17438), (18, 17480), (20, 17525), (26, 17744), (Start: 28 @17798 has 359 MA's), (38, 17831), (68, 17987), (69, 17993), (72, 18002), (82, 18068), (95, 18152), (111, 18254), (117, 18296),

Gene: Virgeve_22 Start: 17520, Stop: 18038, Start Num: 28

Candidate Starts for Virgeve_22:

(2, 16914), (6, 16965), (7, 17019), (9, 17034), (10, 17043), (16, 17160), (18, 17202), (20, 17247), (26, 17466), (Start: 28 @17520 has 359 MA's), (38, 17553), (68, 17709), (69, 17715), (72, 17724), (82, 17790), (95, 17874), (111, 17976), (117, 18018),

Gene: Vista_23 Start: 17812, Stop: 18330, Start Num: 28

Candidate Starts for Vista_23:

(6, 17257), (7, 17311), (9, 17326), (10, 17335), (16, 17452), (18, 17494), (20, 17539), (26, 17758), (Start: 28 @17812 has 359 MA's), (38, 17845), (68, 18001), (69, 18007), (72, 18016), (82, 18082), (95, 18166), (111, 18268), (117, 18310),

Gene: Vivaldi_23 Start: 17842, Stop: 18360, Start Num: 28

Candidate Starts for Vivaldi_23:

(26, 17788), (Start: 28 @17842 has 359 MA's), (38, 17875), (68, 18031), (69, 18037), (72, 18046), (82, 18112), (95, 18196), (111, 18298), (117, 18340),

Gene: Vortex_23 Start: 17522, Stop: 18040, Start Num: 28

Candidate Starts for Vortex_23:

(26, 17468), (Start: 28 @17522 has 359 MA's), (38, 17555), (68, 17711), (69, 17717), (72, 17726), (82, 17792), (95, 17876), (111, 17978), (117, 18020),

Gene: Waleliano_21 Start: 18436, Stop: 18966, Start Num: 28

Candidate Starts for Waleliano_21:

(Start: 24 @18268 has 1 MA's), (Start: 28 @18436 has 359 MA's), (35, 18466), (52, 18535), (69, 18640), (73, 18670), (75, 18688), (83, 18721), (85, 18727), (87, 18739), (89, 18754), (96, 18808), (108, 18886),

Gene: Wallhey_22 Start: 17372, Stop: 17890, Start Num: 28

Candidate Starts for Wallhey_22:

(2, 16766), (6, 16817), (7, 16871), (9, 16886), (10, 16895), (16, 17012), (18, 17054), (20, 17099), (26, 17318), (Start: 28 @17372 has 359 MA's), (38, 17405), (68, 17561), (69, 17567), (72, 17576), (82, 17642), (95, 17726), (111, 17828), (117, 17870),

Gene: Waterdiva_23 Start: 17807, Stop: 18325, Start Num: 28

Candidate Starts for Waterdiva_23:

(26, 17753), (Start: 28 @17807 has 359 MA's), (38, 17840), (68, 17996), (69, 18002), (72, 18011), (82, 18077), (95, 18161), (111, 18263), (117, 18305),

Gene: Weher20_23 Start: 17800, Stop: 18318, Start Num: 28

Candidate Starts for Weher20_23:

(2, 17194), (6, 17245), (7, 17299), (9, 17314), (10, 17323), (16, 17440), (18, 17482), (20, 17527), (26, 17746), (Start: 28 @17800 has 359 MA's), (38, 17833), (68, 17989), (69, 17995), (72, 18004), (82,

18070), (95, 18154), (111, 18256), (117, 18298),

Gene: West99_25 Start: 20032, Stop: 20592, Start Num: 27

Candidate Starts for West99_25:

(Start: 25 @19870 has 1 MA's), (Start: 27 @20032 has 45 MA's), (Start: 30 @20050 has 11 MA's), (31, 20053), (38, 20080), (42, 20092), (56, 20164), (63, 20221), (69, 20257), (74, 20308), (80, 20341), (102, 20488), (116, 20566),

Gene: Windsor_22 Start: 17475, Stop: 17993, Start Num: 28

Candidate Starts for Windsor_22:

(6, 16920), (7, 16974), (9, 16989), (10, 16998), (16, 17115), (18, 17157), (20, 17202), (26, 17421), (Start: 28 @17475 has 359 MA's), (38, 17508), (68, 17664), (69, 17670), (72, 17679), (82, 17745), (95, 17829), (111, 17931), (117, 17973),

Gene: Wooper_22 Start: 17725, Stop: 18264, Start Num: 27

Candidate Starts for Wooper_22:

(26, 17674), (Start: 27 @17725 has 45 MA's), (45, 17791), (72, 17947), (79, 18007), (82, 18016), (87, 18037), (99, 18136), (103, 18157), (113, 18226), (115, 18235),

Gene: Xavier_22 Start: 17525, Stop: 18043, Start Num: 28

Candidate Starts for Xavier_22:

(6, 16970), (7, 17024), (9, 17039), (10, 17048), (16, 17165), (18, 17207), (20, 17252), (26, 17471), (Start: 28 @17525 has 359 MA's), (38, 17558), (68, 17714), (69, 17720), (72, 17729), (82, 17795), (95, 17879), (111, 17981), (117, 18023),

Gene: Xincheng_20 Start: 17891, Stop: 18421, Start Num: 28

Candidate Starts for Xincheng_20:

(Start: 24 @17723 has 1 MA's), (Start: 28 @17891 has 359 MA's), (35, 17921), (52, 17990), (69, 18095), (73, 18125), (75, 18143), (83, 18176), (85, 18182), (87, 18194), (89, 18209), (96, 18263), (108, 18341),

Gene: Yago84_20 Start: 16628, Stop: 17179, Start Num: 27

Candidate Starts for Yago84_20:

(23, 16445), (Start: 25 @16463 has 1 MA's), (26, 16577), (Start: 27 @16628 has 45 MA's), (Start: 28 @16631 has 359 MA's), (45, 16697), (83, 16925), (87, 16943), (89, 16958), (111, 17114), (113, 17138), (115, 17147),

Gene: Yahalom_24 Start: 18486, Stop: 19007, Start Num: 28

Candidate Starts for Yahalom_24:

(Start: 28 @18486 has 359 MA's), (37, 18516), (62, 18651), (82, 18774), (84, 18780), (86, 18789), (95, 18858), (106, 18915),

Gene: Yinz_24 Start: 18515, Stop: 19036, Start Num: 28

Candidate Starts for Yinz_24:

(Start: 28 @18515 has 359 MA's), (37, 18545), (43, 18563), (47, 18575), (62, 18680), (82, 18803), (84, 18809), (86, 18818), (95, 18887), (106, 18944),

Gene: Yoshand_23 Start: 17814, Stop: 18332, Start Num: 28

Candidate Starts for Yoshand_23:

(6, 17259), (7, 17313), (9, 17328), (10, 17337), (16, 17454), (18, 17496), (20, 17541), (26, 17760), (Start: 28 @17814 has 359 MA's), (38, 17847), (68, 18003), (69, 18009), (72, 18018), (82, 18084), (95, 18168), (111, 18270), (117, 18312),

Gene: YouGoGlencoco_23 Start: 17803, Stop: 18321, Start Num: 28

Candidate Starts for YouGoGlencoco_23:

(6, 17248), (7, 17302), (9, 17317), (10, 17326), (16, 17443), (18, 17485), (20, 17530), (26, 17749), (Start: 28 @17803 has 359 MA's), (38, 17836), (68, 17992), (69, 17998), (72, 18007), (82, 18073), (95, 18157), (111, 18259), (117, 18301),

Gene: Zaider_24 Start: 18039, Stop: 18557, Start Num: 28

Candidate Starts for Zaider_24:

(6, 17484), (7, 17538), (9, 17553), (10, 17562), (16, 17679), (18, 17721), (20, 17766), (26, 17985), (Start: 28 @18039 has 359 MA's), (38, 18072), (68, 18228), (69, 18234), (72, 18243), (82, 18309), (95, 18393), (111, 18495), (117, 18537),

Gene: Zelda_23 Start: 17808, Stop: 18326, Start Num: 28

Candidate Starts for Zelda_23:

(26, 17754), (Start: 28 @17808 has 359 MA's), (38, 17841), (68, 17997), (69, 18003), (72, 18012), (82, 18078), (95, 18162), (111, 18264), (117, 18306),

Gene: Zemanar_22 Start: 18436, Stop: 18966, Start Num: 28

Candidate Starts for Zemanar_22:

(Start: 24 @18268 has 1 MA's), (Start: 28 @18436 has 359 MA's), (35, 18466), (52, 18535), (69, 18640), (73, 18670), (75, 18688), (83, 18721), (85, 18727), (87, 18739), (89, 18754), (96, 18808), (108, 18886),

Gene: Zenteno07_27 Start: 18252, Stop: 18770, Start Num: 28

Candidate Starts for Zenteno07_27:

(Start: 28 @18252 has 359 MA's), (41, 18294), (52, 18345), (54, 18357), (56, 18366), (59, 18396), (71, 18450), (72, 18453), (82, 18522), (86, 18537), (89, 18558),

Gene: Zonia_23 Start: 17822, Stop: 18340, Start Num: 28

Candidate Starts for Zonia_23:

(2, 17216), (6, 17267), (7, 17321), (9, 17336), (10, 17345), (16, 17462), (18, 17504), (20, 17549), (26, 17768), (Start: 28 @17822 has 359 MA's), (38, 17855), (68, 18011), (69, 18017), (72, 18026), (82, 18092), (95, 18176), (111, 18278), (117, 18320),