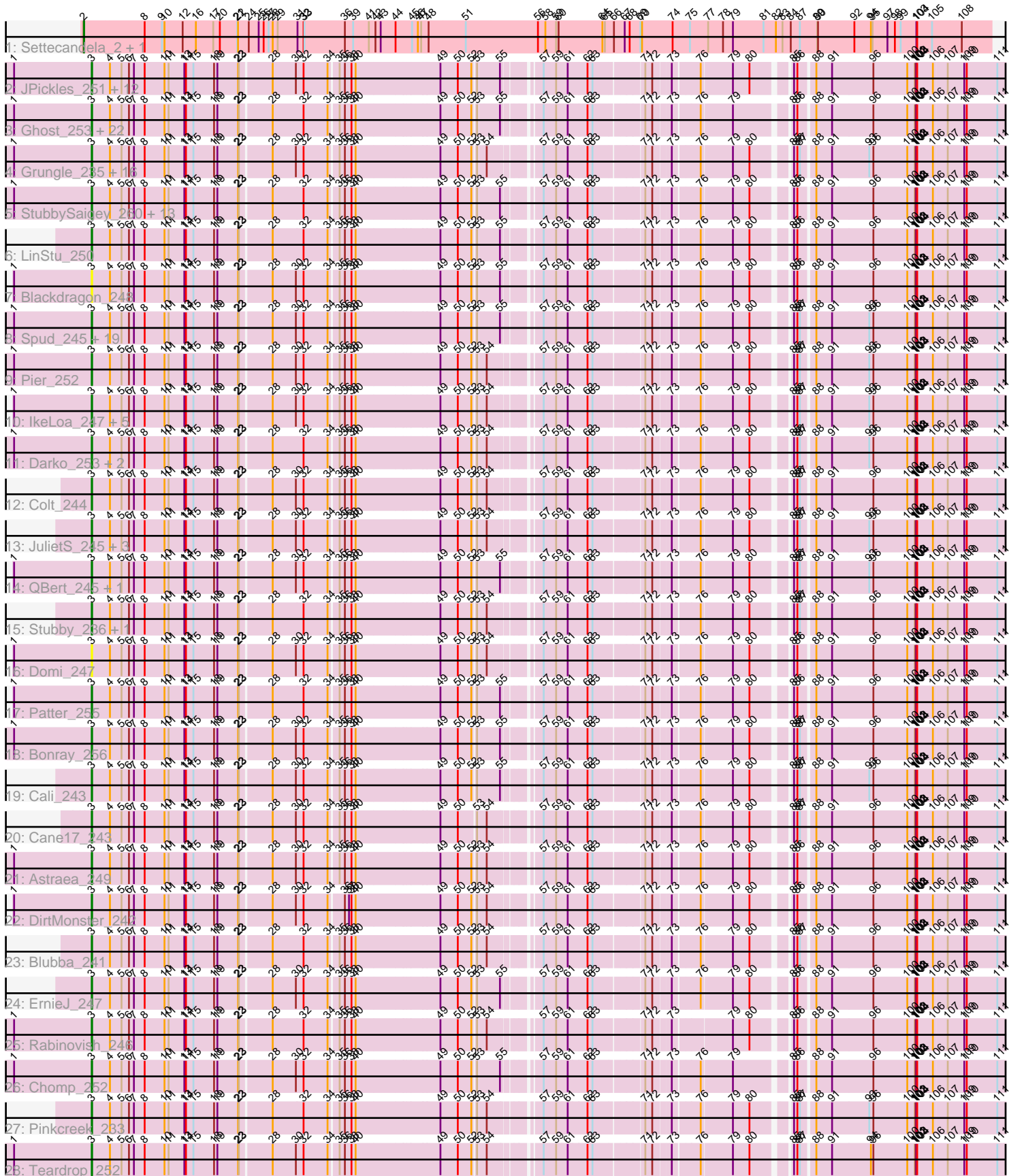


Pham 189582



Note: Tracks are now grouped by subcluster and scaled. Switching in subcluster is indicated by changes in track color. Track scale is now set by default to display the region 30 bp upstream of start 1 to 30 bp downstream of the last possible start. If this default region is judged to be packed too tightly with annotated starts, the track will be further scaled to only show that region of the ORF with annotated starts. This action will be indicated by adding "Zoomed" to the title. For starts, yellow indicates the location of called starts comprised solely of Glimmer/GeneMark auto-annotations, green indicates the location of called starts with at least 1 manual gene annotation.

Pham 189582 Report

This analysis was run 11/02/24 on database version 579.

Pham number 189582 has 123 members, 10 are drafts.

Phages represented in each track:

- Track 1 : Settecandela_2, Phrappuccino_2
- Track 2 : JPickles_251, Blackbrain_252, EasyJones_254, Essence_251, ChaylaJr_252, Chargie21_251, Basquiat_251, ChickenPhender_249, JustHall_247, Morizzled23_251, Cactojaque_248, Wally_251, Matsumoto_251
- Track 3 : Ghost_253, Naija_254, Gamgam_255, Pivoine_254, Jedediah_255, CindyLou_254, Audrick_256, Willis_254, Latch_253, ValleyTerrace_254, YoungMoneyMata_253, Atlantean_253, Fludd_253, Amataga_254, Phlegm_258, Ngannou_248, Jemmno_253, Babyland_256, Ading_256, SilverDipper_258, Quasimodo_256, Momo_255, InigoMontoya_257
- Track 4 : Grungle_235, Koguma_252, FrayBell_256, Izajani_249, Issimir_247, Mikro_247, Nidhogg_254, LolaVinca_249, ZygoTaiga_250, Iota_250, LordLeafolot_255, Specks_258, Tainan_253, NoodleTree_249, Halldule_245, InterFolia_255, Lee7_254
- Track 5 : StubbySaigey_260, Dietrick_242, EmmaElysia_258, Melpomini_248, Catera_242, Kboogie_257, Napoleon13_250, BackyardAgain_248, Turret_244, McGee_255, Janiyra_257, Littleton_257, ScottMcG_245, Trinitium_250
- Track 6 : LinStu_250
- Track 7 : Blackdragon_248
- Track 8 : Spud_245, Spec_247, Drazdys_250, LRRHood_245, Phusco_252, Sprinklers_251, Jaygup_250, Breeniome_253, Capablanca_258, Shaqnato_244, Derek_249, Flabslab_248, Naval22_258, Rahel_255, SmallFry_254, ArcherS7_254, Rizal_242, Gabriel_256, CharlieB_248, LifeSavor_254
- Track 9 : Pier_252
- Track 10 : IkeLoa_247, RoMag_248, Kamryn_252, Lukilu_242, BadAgartude_247, StephanieG_247
- Track 11 : Darko_253, BananaFence_251, Mangeria_253
- Track 12 : Colt_244
- Track 13 : JulietS_245, Yassified_249, ET08_239, Ronan_249
- Track 14 : QBert_245, Sauce_250
- Track 15 : Stubby_236, Alice_239
- Track 16 : Domi_247
- Track 17 : Patter_255
- Track 18 : Bonray_256
- Track 19 : Cali_243
- Track 20 : Cane17_243
- Track 21 : Astraea_249
- Track 22 : DirtMonster_242

- Track 23 : Blubba_241
- Track 24 : ErnieJ_247
- Track 25 : Rabinovish_246
- Track 26 : Chomp_252
- Track 27 : Pinkcreek_233
- Track 28 : Teardrop_252

Summary of Final Annotations (See graph section above for start numbers):

The start number called the most often in the published annotations is 3, it was called in 111 of the 113 non-draft genes in the pham.

Genes that call this "Most Annotated" start:

- Ading_256, Alice_239, Amataga_254, ArcherS7_254, Astraea_249, Atlantean_253, Audrick_256, Babyland_256, BackyardAgain_248, BadAgartude_247, BananaFence_251, Basquiat_251, Blackbrain_252, Blackdragon_248, Blubba_241, Bonray_256, Breeniome_253, Cactojaque_248, Cali_243, Cane17_243, Capablanca_258, Catera_242, Chargie21_251, CharlieB_248, ChaylaJr_252, ChickenPhender_249, Chomp_252, CindyLou_254, Colt_244, Darko_253, Derek_249, Dietrick_242, DirtMonster_242, Domi_247, Drazdys_250, ET08_239, EasyJones_254, EmmaElysia_258, ErnieJ_247, Essence_251, Flabslab_248, Fludd_253, FrayBell_256, Gabriel_256, Gangam_255, Ghost_253, Grungle_235, Halldule_245, IkeLoa_247, InigoMontoya_257, InterFolia_255, Iota_250, Issimir_247, Izajani_249, JPickles_251, Janiyra_257, Jaygup_250, Jedediah_255, Jemmno_253, JulietS_245, JustHall_247, Kamryn_252, Kboogie_257, Koguma_252, LRRHood_245, Latch_253, Lee7_254, LifeSavor_254, LinStu_250, Littleton_257, LolaVinca_249, LordLeafolot_255, Lukilu_242, Mangeria_253, Matsumoto_251, McGee_255, Melpomini_248, Mikro_247, Momo_255, Morizzled23_251, Naija_254, Napoleon13_250, Naval22_258, Ngannou_248, Nidhogg_254, NoodleTree_249, Patter_255, Phlegm_258, Phusco_252, Pier_252, Pinkcreek_233, Pivoine_254, QBert_245, Quasimodo_256, Rabinovish_246, Rahel_255, Rizal_242, RoMag_248, Ronan_249, Sauce_250, ScottMcG_245, Shaqnato_244, SilverDipper_258, SmallFry_254, Spec_247, Specks_258, Sprinklers_251, Spud_245, StephanieG_247, StubbySaigey_260, Stubby_236, Tainan_253, Teardrop_252, Trinitium_250, Turret_244, ValleyTerrace_254, Wally_251, Willis_254, Yassified_249, YoungMoneyMata_253, ZygoTaiga_250,

Genes that have the "Most Annotated" start but do not call it:

-

Genes that do not have the "Most Annotated" start:

- Phrappuccino_2, Settecandela_2,

Summary by start number:

Start 2:

- Found in 2 of 123 (1.6%) of genes in pham
- Manual Annotations of this start: 2 of 113
- Called 100.0% of time when present

- Phage (with cluster) where this start called: Phrappuccino_2 (AA), Settecandela_2 (AA),

Start 3:

- Found in 121 of 123 (98.4%) of genes in pham
- Manual Annotations of this start: 111 of 113
- Called 100.0% of time when present
- Phage (with cluster) where this start called: Ading_256 (C1), Alice_239 (C1), Amataga_254 (C1), ArcherS7_254 (C1), Astraea_249 (C1), Atlantean_253 (C1), Audrick_256 (C1), Babyland_256 (C1), BackyardAgain_248 (C1), BadAgartude_247 (C1), BananaFence_251 (C1), Basquiat_251 (C1), Blackbrain_252 (C1), Blackdragon_248 (C1), Blubba_241 (C1), Bonray_256 (C1), Breeniome_253 (C1), Cactojaque_248 (C1), Cali_243 (C1), Cane17_243 (C1), Capablanca_258 (C1), Catera_242 (C1), Chargie21_251 (C1), CharlieB_248 (C1), ChaylaJr_252 (C1), ChickenPhender_249 (C1), Chomp_252 (C1), CindyLou_254 (C1), Colt_244 (C1), Darko_253 (C1), Derek_249 (C1), Dietrick_242 (C1), DirtMonster_242 (C1), Domi_247 (C1), Drazdys_250 (C1), ET08_239 (C1), EasyJones_254 (C1), EmmaElysia_258 (C1), ErnieJ_247 (C1), Essence_251 (C1), Flabslab_248 (C1), Fludd_253 (C1), FrayBell_256 (C1), Gabriel_256 (C1), Gamgam_255 (C1), Ghost_253 (C1), Grungle_235 (C1), Halldule_245 (C1), IkeLoa_247 (C1), InigoMontoya_257 (C1), InterFolia_255 (C1), Iota_250 (C1), Issimir_247 (C1), Izajani_249 (C1), JPickles_251 (C1), Janiyra_257 (C1), Jaygup_250 (C1), Jedediah_255 (C1), Jemmno_253 (C1), JulietS_245 (C1), JustHall_247 (C1), Kamryn_252 (C1), Kboogie_257 (C1), Koguma_252 (C1), LRRHood_245 (C1), Latch_253 (C1), Lee7_254 (C1), LifeSavor_254 (C1), LinStu_250 (C1), Littleton_257 (C1), LolaVinca_249 (C1), LordLeafolot_255 (C1), Lukilu_242 (C1), Mangeria_253 (C1), Matsumoto_251 (C1), McGee_255 (C1), Melpomini_248 (C1), Mikro_247 (C1), Momo_255 (C1), Morizzled23_251 (C1), Naija_254 (C1), Napoleon13_250 (C1), Naval22_258 (C1), Ngannou_248 (C1), Nidhogg_254 (C1), NoodleTree_249 (C1), Patter_255 (C1), Phlegm_258 (C1), Phusco_252 (C1), Pier_252 (C1), Pinkcreek_233 (C1), Pivoine_254 (C1), QBert_245 (C1), Quasimodo_256 (C1), Rabinovich_246 (C1), Rahel_255 (C1), Rizal_242 (C1), RoMag_248 (C1), Ronan_249 (C1), Sauce_250 (C1), ScottMcG_245 (C1), Shaqnato_244 (C1), SilverDipper_258 (C1), SmallFry_254 (C1), Spec_247 (C1), Specks_258 (C1), Sprinklers_251 (C1), Spud_245 (C1), StephanieG_247 (C1), StubbySaigey_260 (C1), Stubby_236 (C1), Tainan_253 (C1), Teardrop_252 (C1), Trinitium_250 (C1), Turret_244 (C1), ValleyTerrace_254 (C1), Wally_251 (C1), Willis_254 (C1), Yassified_249 (C1), YoungMoneyMata_253 (C1), ZygoTaiga_250 (C1),

Summary by clusters:

There are 2 clusters represented in this pham: AA, C1,

Info for manual annotations of cluster AA:

- Start number 2 was manually annotated 2 times for cluster AA.

Info for manual annotations of cluster C1:

- Start number 3 was manually annotated 111 times for cluster C1.

Gene Information:

Gene: Ading_256 Start: 147670, Stop: 150693, Start Num: 3

Candidate Starts for Ading_256:

(1, 147388), (Start: 3 @147670 has 111 MA's), (4, 147736), (5, 147778), (6, 147802), (7, 147820), (8, 147859), (10, 147931), (11, 147946), (13, 148003), (14, 148009), (15, 148036), (18, 148111), (19, 148123), (22, 148198), (23, 148201), (28, 148309), (32, 148420), (34, 148507), (35, 148537), (36, 148555), (38, 148579), (40, 148594), (49, 148885), (50, 148945), (52, 148993), (53, 149002), (55, 149074), (57, 149176), (59, 149221), (61, 149251), (62, 149314), (63, 149329), (71, 149488), (72, 149512), (73, 149569), (76, 149656), (79, 149764), (85, 149935), (86, 149947), (88, 149998), (91, 150055), (96, 150202), (100, 150325), (101, 150352), (102, 150355), (103, 150358), (104, 150361), (106, 150418), (107, 150466), (109, 150526), (110, 150535), (111, 150646),

Gene: Alice_239 Start: 142901, Stop: 145924, Start Num: 3

Candidate Starts for Alice_239:

(Start: 3 @142901 has 111 MA's), (4, 142967), (5, 143009), (6, 143033), (7, 143051), (8, 143090), (10, 143162), (11, 143177), (13, 143234), (14, 143240), (15, 143267), (18, 143342), (19, 143354), (22, 143429), (23, 143432), (28, 143540), (32, 143651), (34, 143738), (35, 143768), (36, 143786), (38, 143810), (40, 143825), (49, 144116), (50, 144176), (52, 144224), (53, 144233), (54, 144257), (57, 144407), (59, 144452), (61, 144482), (62, 144545), (63, 144560), (71, 144719), (72, 144743), (73, 144800), (76, 144887), (79, 144995), (80, 145055), (85, 145166), (86, 145178), (87, 145187), (88, 145229), (91, 145286), (96, 145433), (100, 145556), (101, 145583), (102, 145586), (103, 145589), (104, 145592), (106, 145649), (107, 145697), (109, 145757), (110, 145766), (111, 145877),

Gene: Amataga_254 Start: 144824, Stop: 147847, Start Num: 3

Candidate Starts for Amataga_254:

(1, 144542), (Start: 3 @144824 has 111 MA's), (4, 144890), (5, 144932), (6, 144956), (7, 144974), (8, 145013), (10, 145085), (11, 145100), (13, 145157), (14, 145163), (15, 145190), (18, 145265), (19, 145277), (22, 145352), (23, 145355), (28, 145463), (32, 145574), (34, 145661), (35, 145691), (36, 145709), (38, 145733), (40, 145748), (49, 146039), (50, 146099), (52, 146147), (53, 146156), (55, 146228), (57, 146330), (59, 146375), (61, 146405), (62, 146468), (63, 146483), (71, 146642), (72, 146666), (73, 146723), (76, 146810), (79, 146918), (85, 147089), (86, 147101), (88, 147152), (91, 147209), (96, 147356), (100, 147479), (101, 147506), (102, 147509), (103, 147512), (104, 147515), (106, 147572), (107, 147620), (109, 147680), (110, 147689), (111, 147800),

Gene: ArcherS7_254 Start: 146569, Stop: 149592, Start Num: 3

Candidate Starts for ArcherS7_254:

(1, 146287), (Start: 3 @146569 has 111 MA's), (4, 146635), (5, 146677), (6, 146701), (7, 146719), (8, 146758), (10, 146830), (11, 146845), (13, 146902), (14, 146908), (15, 146935), (18, 147010), (19, 147022), (22, 147097), (23, 147100), (28, 147208), (30, 147292), (32, 147319), (34, 147406), (35, 147436), (36, 147454), (38, 147478), (40, 147493), (49, 147784), (50, 147844), (52, 147892), (53, 147901), (55, 147973), (57, 148075), (59, 148120), (61, 148150), (62, 148213), (63, 148228), (71, 148387), (72, 148411), (73, 148468), (76, 148555), (79, 148663), (80, 148723), (85, 148834), (86, 148846), (87, 148855), (88, 148897), (91, 148954), (93, 149086), (96, 149101), (100, 149224), (101, 149251), (102, 149254), (103, 149257), (104, 149260), (106, 149317), (107, 149365), (109, 149425), (110, 149434), (111, 149545),

Gene: Astraea_249 Start: 144877, Stop: 147900, Start Num: 3

Candidate Starts for Astraea_249:

(1, 144595), (Start: 3 @144877 has 111 MA's), (4, 144943), (5, 144985), (6, 145009), (7, 145027), (8, 145066), (10, 145138), (11, 145153), (13, 145210), (14, 145216), (15, 145243), (18, 145318), (19, 145330), (22, 145405), (23, 145408), (28, 145516), (30, 145600), (32, 145627), (34, 145714), (35, 145744), (36, 145762), (38, 145786), (40, 145801), (49, 146092), (50, 146152), (52, 146200), (53, 146209), (54, 146233), (57, 146383), (59, 146428), (61, 146458), (62, 146521), (63, 146536), (71, 146695), (72, 146719), (73, 146776), (76, 146863), (79, 146971), (80, 147031), (85, 147142), (86,

147154), (88, 147205), (91, 147262), (96, 147409), (100, 147532), (101, 147559), (102, 147562), (103, 147565), (104, 147568), (106, 147625), (107, 147673), (109, 147733), (110, 147742), (111, 147853),

Gene: Atlantean_253 Start: 144824, Stop: 147847, Start Num: 3

Candidate Starts for Atlantean_253:

(1, 144542), (Start: 3 @144824 has 111 MA's), (4, 144890), (5, 144932), (6, 144956), (7, 144974), (8, 145013), (10, 145085), (11, 145100), (13, 145157), (14, 145163), (15, 145190), (18, 145265), (19, 145277), (22, 145352), (23, 145355), (28, 145463), (32, 145574), (34, 145661), (35, 145691), (36, 145709), (38, 145733), (40, 145748), (49, 146039), (50, 146099), (52, 146147), (53, 146156), (55, 146228), (57, 146330), (59, 146375), (61, 146405), (62, 146468), (63, 146483), (71, 146642), (72, 146666), (73, 146723), (76, 146810), (79, 146918), (85, 147089), (86, 147101), (88, 147152), (91, 147209), (96, 147356), (100, 147479), (101, 147506), (102, 147509), (103, 147512), (104, 147515), (106, 147572), (107, 147620), (109, 147680), (110, 147689), (111, 147800),

Gene: Audrick_256 Start: 144714, Stop: 147737, Start Num: 3

Candidate Starts for Audrick_256:

(1, 144432), (Start: 3 @144714 has 111 MA's), (4, 144780), (5, 144822), (6, 144846), (7, 144864), (8, 144903), (10, 144975), (11, 144990), (13, 145047), (14, 145053), (15, 145080), (18, 145155), (19, 145167), (22, 145242), (23, 145245), (28, 145353), (32, 145464), (34, 145551), (35, 145581), (36, 145599), (38, 145623), (40, 145638), (49, 145929), (50, 145989), (52, 146037), (53, 146046), (55, 146118), (57, 146220), (59, 146265), (61, 146295), (62, 146358), (63, 146373), (71, 146532), (72, 146556), (73, 146613), (76, 146700), (79, 146808), (85, 146979), (86, 146991), (88, 147042), (91, 147099), (96, 147246), (100, 147369), (101, 147396), (102, 147399), (103, 147402), (104, 147405), (106, 147462), (107, 147510), (109, 147570), (110, 147579), (111, 147690),

Gene: Babyland_256 Start: 145601, Stop: 148624, Start Num: 3

Candidate Starts for Babyland_256:

(1, 145319), (Start: 3 @145601 has 111 MA's), (4, 145667), (5, 145709), (6, 145733), (7, 145751), (8, 145790), (10, 145862), (11, 145877), (13, 145934), (14, 145940), (15, 145967), (18, 146042), (19, 146054), (22, 146129), (23, 146132), (28, 146240), (32, 146351), (34, 146438), (35, 146468), (36, 146486), (38, 146510), (40, 146525), (49, 146816), (50, 146876), (52, 146924), (53, 146933), (55, 147005), (57, 147107), (59, 147152), (61, 147182), (62, 147245), (63, 147260), (71, 147419), (72, 147443), (73, 147500), (76, 147587), (79, 147695), (85, 147866), (86, 147878), (88, 147929), (91, 147986), (96, 148133), (100, 148256), (101, 148283), (102, 148286), (103, 148289), (104, 148292), (106, 148349), (107, 148397), (109, 148457), (110, 148466), (111, 148577),

Gene: BackyardAgain_248 Start: 142974, Stop: 145997, Start Num: 3

Candidate Starts for BackyardAgain_248:

(1, 142692), (Start: 3 @142974 has 111 MA's), (4, 143040), (5, 143082), (6, 143106), (7, 143124), (8, 143163), (10, 143235), (11, 143250), (13, 143307), (14, 143313), (15, 143340), (18, 143415), (19, 143427), (22, 143502), (23, 143505), (28, 143613), (32, 143724), (34, 143811), (35, 143841), (36, 143859), (38, 143883), (40, 143898), (49, 144189), (50, 144249), (52, 144297), (53, 144306), (55, 144378), (57, 144480), (59, 144525), (61, 144555), (62, 144618), (63, 144633), (71, 144792), (72, 144816), (73, 144873), (76, 144960), (79, 145068), (80, 145128), (85, 145239), (86, 145251), (88, 145302), (91, 145359), (96, 145506), (100, 145629), (101, 145656), (102, 145659), (103, 145662), (104, 145665), (106, 145722), (107, 145770), (109, 145830), (110, 145839), (111, 145950),

Gene: BadAgartude_247 Start: 144886, Stop: 147909, Start Num: 3

Candidate Starts for BadAgartude_247:

(1, 144604), (Start: 3 @144886 has 111 MA's), (4, 144952), (5, 144994), (6, 145018), (7, 145036), (8, 145075), (10, 145147), (11, 145162), (13, 145219), (14, 145225), (15, 145252), (18, 145327), (19, 145339), (22, 145414), (23, 145417), (28, 145525), (30, 145609), (32, 145636), (34, 145723), (35, 145753), (36, 145771), (38, 145795), (40, 145810), (49, 146101), (50, 146161), (52, 146209), (53,

146218), (54, 146242), (57, 146392), (59, 146437), (61, 146467), (62, 146530), (63, 146545), (71, 146704), (72, 146728), (73, 146785), (76, 146872), (79, 146980), (80, 147040), (85, 147151), (86, 147163), (87, 147172), (88, 147214), (91, 147271), (93, 147403), (96, 147418), (100, 147541), (101, 147568), (102, 147571), (103, 147574), (104, 147577), (106, 147634), (107, 147682), (109, 147742), (110, 147751), (111, 147862),

Gene: BananaFence_251 Start: 145506, Stop: 148529, Start Num: 3

Candidate Starts for BananaFence_251:

(1, 145224), (Start: 3 @145506 has 111 MA's), (4, 145572), (5, 145614), (6, 145638), (7, 145656), (8, 145695), (10, 145767), (11, 145782), (13, 145839), (14, 145845), (15, 145872), (18, 145947), (19, 145959), (22, 146034), (23, 146037), (28, 146145), (32, 146256), (34, 146343), (35, 146373), (36, 146391), (38, 146415), (40, 146430), (49, 146721), (50, 146781), (52, 146829), (53, 146838), (54, 146862), (57, 147012), (59, 147057), (61, 147087), (62, 147150), (63, 147165), (71, 147324), (72, 147348), (73, 147405), (76, 147492), (79, 147600), (80, 147660), (85, 147771), (86, 147783), (87, 147792), (88, 147834), (91, 147891), (93, 148023), (96, 148038), (100, 148161), (101, 148188), (102, 148191), (103, 148194), (104, 148197), (106, 148254), (107, 148302), (109, 148362), (110, 148371), (111, 148482),

Gene: Basquiat_251 Start: 143792, Stop: 146815, Start Num: 3

Candidate Starts for Basquiat_251:

(1, 143510), (Start: 3 @143792 has 111 MA's), (4, 143858), (5, 143900), (6, 143924), (7, 143942), (8, 143981), (10, 144053), (11, 144068), (13, 144125), (14, 144131), (15, 144158), (18, 144233), (19, 144245), (22, 144320), (23, 144323), (28, 144431), (30, 144515), (32, 144542), (34, 144629), (35, 144659), (36, 144677), (38, 144701), (40, 144716), (49, 145007), (50, 145067), (52, 145115), (53, 145124), (55, 145196), (57, 145298), (59, 145343), (61, 145373), (62, 145436), (63, 145451), (71, 145610), (72, 145634), (73, 145691), (76, 145778), (79, 145886), (80, 145946), (85, 146057), (86, 146069), (88, 146120), (91, 146177), (96, 146324), (100, 146447), (101, 146474), (102, 146477), (103, 146480), (104, 146483), (106, 146540), (107, 146588), (109, 146648), (110, 146657), (111, 146768),

Gene: Blackbrain_252 Start: 145569, Stop: 148592, Start Num: 3

Candidate Starts for Blackbrain_252:

(1, 145287), (Start: 3 @145569 has 111 MA's), (4, 145635), (5, 145677), (6, 145701), (7, 145719), (8, 145758), (10, 145830), (11, 145845), (13, 145902), (14, 145908), (15, 145935), (18, 146010), (19, 146022), (22, 146097), (23, 146100), (28, 146208), (30, 146292), (32, 146319), (34, 146406), (35, 146436), (36, 146454), (38, 146478), (40, 146493), (49, 146784), (50, 146844), (52, 146892), (53, 146901), (55, 146973), (57, 147075), (59, 147120), (61, 147150), (62, 147213), (63, 147228), (71, 147387), (72, 147411), (73, 147468), (76, 147555), (79, 147663), (80, 147723), (85, 147834), (86, 147846), (88, 147897), (91, 147954), (96, 148101), (100, 148224), (101, 148251), (102, 148254), (103, 148257), (104, 148260), (106, 148317), (107, 148365), (109, 148425), (110, 148434), (111, 148545),

Gene: Blackdragon_248 Start: 145117, Stop: 148140, Start Num: 3

Candidate Starts for Blackdragon_248:

(1, 144835), (Start: 3 @145117 has 111 MA's), (4, 145183), (5, 145225), (6, 145249), (7, 145267), (8, 145306), (10, 145378), (11, 145393), (13, 145450), (14, 145456), (15, 145483), (18, 145558), (19, 145570), (22, 145645), (23, 145648), (28, 145756), (30, 145840), (32, 145867), (34, 145954), (35, 145984), (36, 146002), (38, 146026), (40, 146041), (49, 146332), (50, 146392), (52, 146440), (53, 146449), (55, 146521), (57, 146623), (59, 146668), (61, 146698), (62, 146761), (63, 146776), (71, 146935), (72, 146959), (73, 147016), (76, 147103), (79, 147211), (80, 147271), (85, 147382), (86, 147394), (88, 147445), (91, 147502), (96, 147649), (100, 147772), (101, 147799), (102, 147802), (103, 147805), (104, 147808), (106, 147865), (107, 147913), (109, 147973), (110, 147982), (111, 148093),

Gene: Blubba_241 Start: 148830, Stop: 151853, Start Num: 3

Candidate Starts for Blubba_241:

(Start: 3 @148830 has 111 MA's), (4, 148896), (5, 148938), (6, 148962), (7, 148980), (8, 149019), (10, 149091), (11, 149106), (13, 149163), (14, 149169), (15, 149196), (18, 149271), (19, 149283), (22, 149358), (23, 149361), (28, 149469), (32, 149580), (34, 149667), (35, 149697), (36, 149715), (38, 149739), (40, 149754), (49, 150045), (50, 150105), (52, 150153), (53, 150162), (54, 150186), (57, 150336), (59, 150381), (61, 150411), (62, 150474), (63, 150489), (71, 150648), (72, 150672), (73, 150729), (76, 150816), (79, 150924), (80, 150984), (85, 151095), (86, 151107), (87, 151116), (88, 151158), (91, 151215), (96, 151362), (100, 151485), (101, 151512), (102, 151515), (103, 151518), (104, 151521), (106, 151578), (107, 151626), (109, 151686), (110, 151695), (111, 151806),

Gene: Bonray_256 Start: 147369, Stop: 150392, Start Num: 3

Candidate Starts for Bonray_256:

(1, 147087), (Start: 3 @147369 has 111 MA's), (4, 147435), (5, 147477), (6, 147501), (7, 147519), (8, 147558), (10, 147630), (11, 147645), (13, 147702), (14, 147708), (15, 147735), (18, 147810), (19, 147822), (22, 147897), (23, 147900), (28, 148008), (30, 148092), (32, 148119), (34, 148206), (35, 148236), (36, 148254), (38, 148278), (40, 148293), (49, 148584), (50, 148644), (52, 148692), (53, 148701), (55, 148773), (57, 148875), (59, 148920), (61, 148950), (62, 149013), (63, 149028), (71, 149187), (72, 149211), (73, 149268), (76, 149355), (79, 149463), (80, 149523), (85, 149634), (86, 149646), (87, 149655), (88, 149697), (91, 149754), (96, 149901), (100, 150024), (101, 150051), (102, 150054), (103, 150057), (104, 150060), (106, 150117), (107, 150165), (109, 150225), (110, 150234), (111, 150345),

Gene: Breeniome_253 Start: 144324, Stop: 147347, Start Num: 3

Candidate Starts for Breeniome_253:

(1, 144042), (Start: 3 @144324 has 111 MA's), (4, 144390), (5, 144432), (6, 144456), (7, 144474), (8, 144513), (10, 144585), (11, 144600), (13, 144657), (14, 144663), (15, 144690), (18, 144765), (19, 144777), (22, 144852), (23, 144855), (28, 144963), (30, 145047), (32, 145074), (34, 145161), (35, 145191), (36, 145209), (38, 145233), (40, 145248), (49, 145539), (50, 145599), (52, 145647), (53, 145656), (55, 145728), (57, 145830), (59, 145875), (61, 145905), (62, 145968), (63, 145983), (71, 146142), (72, 146166), (73, 146223), (76, 146310), (79, 146418), (80, 146478), (85, 146589), (86, 146601), (87, 146610), (88, 146652), (91, 146709), (93, 146841), (96, 146856), (100, 146979), (101, 147006), (102, 147009), (103, 147012), (104, 147015), (106, 147072), (107, 147120), (109, 147180), (110, 147189), (111, 147300),

Gene: Cactojaque_248 Start: 144515, Stop: 147538, Start Num: 3

Candidate Starts for Cactojaque_248:

(1, 144233), (Start: 3 @144515 has 111 MA's), (4, 144581), (5, 144623), (6, 144647), (7, 144665), (8, 144704), (10, 144776), (11, 144791), (13, 144848), (14, 144854), (15, 144881), (18, 144956), (19, 144968), (22, 145043), (23, 145046), (28, 145154), (30, 145238), (32, 145265), (34, 145352), (35, 145382), (36, 145400), (38, 145424), (40, 145439), (49, 145730), (50, 145790), (52, 145838), (53, 145847), (55, 145919), (57, 146021), (59, 146066), (61, 146096), (62, 146159), (63, 146174), (71, 146333), (72, 146357), (73, 146414), (76, 146501), (79, 146609), (80, 146669), (85, 146780), (86, 146792), (88, 146843), (91, 146900), (96, 147047), (100, 147170), (101, 147197), (102, 147200), (103, 147203), (104, 147206), (106, 147263), (107, 147311), (109, 147371), (110, 147380), (111, 147491),

Gene: Cali_243 Start: 145294, Stop: 148317, Start Num: 3

Candidate Starts for Cali_243:

(Start: 3 @145294 has 111 MA's), (4, 145360), (5, 145402), (6, 145426), (7, 145444), (8, 145483), (10, 145555), (11, 145570), (13, 145627), (14, 145633), (15, 145660), (18, 145735), (19, 145747), (22, 145822), (23, 145825), (28, 145933), (30, 146017), (32, 146044), (34, 146131), (35, 146161), (36, 146179), (38, 146203), (40, 146218), (49, 146509), (50, 146569), (52, 146617), (53, 146626), (55, 146698), (57, 146800), (59, 146845), (61, 146875), (62, 146938), (63, 146953), (71, 147112), (72, 147136), (73, 147193), (76, 147280), (79, 147388), (80, 147448), (85, 147559), (86, 147571), (87, 147580), (88, 147622), (91, 147679), (93, 147811), (96, 147826), (100, 147949), (101, 147976), (102,

147979), (103, 147982), (104, 147985), (106, 148042), (107, 148090), (109, 148150), (110, 148159), (111, 148270),

Gene: Cane17_243 Start: 149239, Stop: 152262, Start Num: 3

Candidate Starts for Cane17_243:

(Start: 3 @149239 has 111 MA's), (4, 149305), (5, 149347), (6, 149371), (7, 149389), (8, 149428), (10, 149500), (11, 149515), (13, 149572), (14, 149578), (15, 149605), (18, 149680), (19, 149692), (22, 149767), (23, 149770), (28, 149878), (30, 149962), (32, 149989), (34, 150076), (35, 150106), (36, 150124), (38, 150148), (40, 150163), (49, 150454), (50, 150514), (53, 150571), (54, 150595), (57, 150745), (59, 150790), (61, 150820), (62, 150883), (63, 150898), (71, 151057), (72, 151081), (73, 151138), (76, 151225), (79, 151333), (80, 151393), (85, 151504), (86, 151516), (87, 151525), (88, 151567), (91, 151624), (96, 151771), (100, 151894), (101, 151921), (102, 151924), (103, 151927), (104, 151930), (106, 151987), (107, 152035), (109, 152095), (110, 152104), (111, 152215),

Gene: Capablanca_258 Start: 147548, Stop: 150571, Start Num: 3

Candidate Starts for Capablanca_258:

(1, 147266), (Start: 3 @147548 has 111 MA's), (4, 147614), (5, 147656), (6, 147680), (7, 147698), (8, 147737), (10, 147809), (11, 147824), (13, 147881), (14, 147887), (15, 147914), (18, 147989), (19, 148001), (22, 148076), (23, 148079), (28, 148187), (30, 148271), (32, 148298), (34, 148385), (35, 148415), (36, 148433), (38, 148457), (40, 148472), (49, 148763), (50, 148823), (52, 148871), (53, 148880), (55, 148952), (57, 149054), (59, 149099), (61, 149129), (62, 149192), (63, 149207), (71, 149366), (72, 149390), (73, 149447), (76, 149534), (79, 149642), (80, 149702), (85, 149813), (86, 149825), (87, 149834), (88, 149876), (91, 149933), (93, 150065), (96, 150080), (100, 150203), (101, 150230), (102, 150233), (103, 150236), (104, 150239), (106, 150296), (107, 150344), (109, 150404), (110, 150413), (111, 150524),

Gene: Catera_242 Start: 144037, Stop: 147060, Start Num: 3

Candidate Starts for Catera_242:

(1, 143755), (Start: 3 @144037 has 111 MA's), (4, 144103), (5, 144145), (6, 144169), (7, 144187), (8, 144226), (10, 144298), (11, 144313), (13, 144370), (14, 144376), (15, 144403), (18, 144478), (19, 144490), (22, 144565), (23, 144568), (28, 144676), (32, 144787), (34, 144874), (35, 144904), (36, 144922), (38, 144946), (40, 144961), (49, 145252), (50, 145312), (52, 145360), (53, 145369), (55, 145441), (57, 145543), (59, 145588), (61, 145618), (62, 145681), (63, 145696), (71, 145855), (72, 145879), (73, 145936), (76, 146023), (79, 146131), (80, 146191), (85, 146302), (86, 146314), (88, 146365), (91, 146422), (96, 146569), (100, 146692), (101, 146719), (102, 146722), (103, 146725), (104, 146728), (106, 146785), (107, 146833), (109, 146893), (110, 146902), (111, 147013),

Gene: Chargie21_251 Start: 143792, Stop: 146815, Start Num: 3

Candidate Starts for Chargie21_251:

(1, 143510), (Start: 3 @143792 has 111 MA's), (4, 143858), (5, 143900), (6, 143924), (7, 143942), (8, 143981), (10, 144053), (11, 144068), (13, 144125), (14, 144131), (15, 144158), (18, 144233), (19, 144245), (22, 144320), (23, 144323), (28, 144431), (30, 144515), (32, 144542), (34, 144629), (35, 144659), (36, 144677), (38, 144701), (40, 144716), (49, 145007), (50, 145067), (52, 145115), (53, 145124), (55, 145196), (57, 145298), (59, 145343), (61, 145373), (62, 145436), (63, 145451), (71, 145610), (72, 145634), (73, 145691), (76, 145778), (79, 145886), (80, 145946), (85, 146057), (86, 146069), (88, 146120), (91, 146177), (96, 146324), (100, 146447), (101, 146474), (102, 146477), (103, 146480), (104, 146483), (106, 146540), (107, 146588), (109, 146648), (110, 146657), (111, 146768),

Gene: CharlieB_248 Start: 145060, Stop: 148083, Start Num: 3

Candidate Starts for CharlieB_248:

(1, 144778), (Start: 3 @145060 has 111 MA's), (4, 145126), (5, 145168), (6, 145192), (7, 145210), (8, 145249), (10, 145321), (11, 145336), (13, 145393), (14, 145399), (15, 145426), (18, 145501), (19, 145513), (22, 145588), (23, 145591), (28, 145699), (30, 145783), (32, 145810), (34, 145897), (35,

145927), (36, 145945), (38, 145969), (40, 145984), (49, 146275), (50, 146335), (52, 146383), (53, 146392), (55, 146464), (57, 146566), (59, 146611), (61, 146641), (62, 146704), (63, 146719), (71, 146878), (72, 146902), (73, 146959), (76, 147046), (79, 147154), (80, 147214), (85, 147325), (86, 147337), (87, 147346), (88, 147388), (91, 147445), (93, 147577), (96, 147592), (100, 147715), (101, 147742), (102, 147745), (103, 147748), (104, 147751), (106, 147808), (107, 147856), (109, 147916), (110, 147925), (111, 148036),

Gene: ChaylaJr_252 Start: 144734, Stop: 147757, Start Num: 3

Candidate Starts for ChaylaJr_252:

(1, 144452), (Start: 3 @144734 has 111 MA's), (4, 144800), (5, 144842), (6, 144866), (7, 144884), (8, 144923), (10, 144995), (11, 145010), (13, 145067), (14, 145073), (15, 145100), (18, 145175), (19, 145187), (22, 145262), (23, 145265), (28, 145373), (30, 145457), (32, 145484), (34, 145571), (35, 145601), (36, 145619), (38, 145643), (40, 145658), (49, 145949), (50, 146009), (52, 146057), (53, 146066), (55, 146138), (57, 146240), (59, 146285), (61, 146315), (62, 146378), (63, 146393), (71, 146552), (72, 146576), (73, 146633), (76, 146720), (79, 146828), (80, 146888), (85, 146999), (86, 147011), (88, 147062), (91, 147119), (96, 147266), (100, 147389), (101, 147416), (102, 147419), (103, 147422), (104, 147425), (106, 147482), (107, 147530), (109, 147590), (110, 147599), (111, 147710),

Gene: ChickenPhender_249 Start: 143490, Stop: 146513, Start Num: 3

Candidate Starts for ChickenPhender_249:

(1, 143208), (Start: 3 @143490 has 111 MA's), (4, 143556), (5, 143598), (6, 143622), (7, 143640), (8, 143679), (10, 143751), (11, 143766), (13, 143823), (14, 143829), (15, 143856), (18, 143931), (19, 143943), (22, 144018), (23, 144021), (28, 144129), (30, 144213), (32, 144240), (34, 144327), (35, 144357), (36, 144375), (38, 144399), (40, 144414), (49, 144705), (50, 144765), (52, 144813), (53, 144822), (55, 144894), (57, 144996), (59, 145041), (61, 145071), (62, 145134), (63, 145149), (71, 145308), (72, 145332), (73, 145389), (76, 145476), (79, 145584), (80, 145644), (85, 145755), (86, 145767), (88, 145818), (91, 145875), (96, 146022), (100, 146145), (101, 146172), (102, 146175), (103, 146178), (104, 146181), (106, 146238), (107, 146286), (109, 146346), (110, 146355), (111, 146466),

Gene: Chomp_252 Start: 146926, Stop: 149949, Start Num: 3

Candidate Starts for Chomp_252:

(1, 146644), (Start: 3 @146926 has 111 MA's), (4, 146992), (5, 147034), (6, 147058), (7, 147076), (8, 147115), (10, 147187), (11, 147202), (13, 147259), (14, 147265), (15, 147292), (18, 147367), (19, 147379), (22, 147454), (23, 147457), (28, 147565), (30, 147649), (32, 147676), (34, 147763), (35, 147793), (36, 147811), (38, 147835), (40, 147850), (49, 148141), (50, 148201), (52, 148249), (53, 148258), (55, 148330), (57, 148432), (59, 148477), (61, 148507), (62, 148570), (63, 148585), (71, 148744), (72, 148768), (73, 148825), (76, 148912), (79, 149020), (85, 149191), (86, 149203), (88, 149254), (91, 149311), (96, 149458), (100, 149581), (101, 149608), (102, 149611), (103, 149614), (104, 149617), (106, 149674), (107, 149722), (109, 149782), (110, 149791), (111, 149902),

Gene: CindyLou_254 Start: 147186, Stop: 150209, Start Num: 3

Candidate Starts for CindyLou_254:

(1, 146904), (Start: 3 @147186 has 111 MA's), (4, 147252), (5, 147294), (6, 147318), (7, 147336), (8, 147375), (10, 147447), (11, 147462), (13, 147519), (14, 147525), (15, 147552), (18, 147627), (19, 147639), (22, 147714), (23, 147717), (28, 147825), (32, 147936), (34, 148023), (35, 148053), (36, 148071), (38, 148095), (40, 148110), (49, 148401), (50, 148461), (52, 148509), (53, 148518), (55, 148590), (57, 148692), (59, 148737), (61, 148767), (62, 148830), (63, 148845), (71, 149004), (72, 149028), (73, 149085), (76, 149172), (79, 149280), (85, 149451), (86, 149463), (88, 149514), (91, 149571), (96, 149718), (100, 149841), (101, 149868), (102, 149871), (103, 149874), (104, 149877), (106, 149934), (107, 149982), (109, 150042), (110, 150051), (111, 150162),

Gene: Colt_244 Start: 148431, Stop: 151454, Start Num: 3

Candidate Starts for Colt_244:

(Start: 3 @148431 has 111 MA's), (4, 148497), (5, 148539), (6, 148563), (7, 148581), (8, 148620), (10, 148692), (11, 148707), (13, 148764), (14, 148770), (15, 148797), (18, 148872), (19, 148884), (22, 148959), (23, 148962), (28, 149070), (30, 149154), (32, 149181), (34, 149268), (35, 149298), (36, 149316), (38, 149340), (40, 149355), (49, 149646), (50, 149706), (52, 149754), (53, 149763), (54, 149787), (57, 149937), (59, 149982), (61, 150012), (62, 150075), (63, 150090), (71, 150249), (72, 150273), (73, 150330), (76, 150417), (79, 150525), (80, 150585), (85, 150696), (86, 150708), (87, 150717), (88, 150759), (91, 150816), (96, 150963), (100, 151086), (101, 151113), (102, 151116), (103, 151119), (104, 151122), (106, 151179), (107, 151227), (109, 151287), (110, 151296), (111, 151407),

Gene: Darko_253 Start: 145510, Stop: 148533, Start Num: 3

Candidate Starts for Darko_253:

(1, 145228), (Start: 3 @145510 has 111 MA's), (4, 145576), (5, 145618), (6, 145642), (7, 145660), (8, 145699), (10, 145771), (11, 145786), (13, 145843), (14, 145849), (15, 145876), (18, 145951), (19, 145963), (22, 146038), (23, 146041), (28, 146149), (32, 146260), (34, 146347), (35, 146377), (36, 146395), (38, 146419), (40, 146434), (49, 146725), (50, 146785), (52, 146833), (53, 146842), (54, 146866), (57, 147016), (59, 147061), (61, 147091), (62, 147154), (63, 147169), (71, 147328), (72, 147352), (73, 147409), (76, 147496), (79, 147604), (80, 147664), (85, 147775), (86, 147787), (87, 147796), (88, 147838), (91, 147895), (93, 148027), (96, 148042), (100, 148165), (101, 148192), (102, 148195), (103, 148198), (104, 148201), (106, 148258), (107, 148306), (109, 148366), (110, 148375), (111, 148486),

Gene: Derek_249 Start: 146203, Stop: 149226, Start Num: 3

Candidate Starts for Derek_249:

(1, 145921), (Start: 3 @146203 has 111 MA's), (4, 146269), (5, 146311), (6, 146335), (7, 146353), (8, 146392), (10, 146464), (11, 146479), (13, 146536), (14, 146542), (15, 146569), (18, 146644), (19, 146656), (22, 146731), (23, 146734), (28, 146842), (30, 146926), (32, 146953), (34, 147040), (35, 147070), (36, 147088), (38, 147112), (40, 147127), (49, 147418), (50, 147478), (52, 147526), (53, 147535), (55, 147607), (57, 147709), (59, 147754), (61, 147784), (62, 147847), (63, 147862), (71, 148021), (72, 148045), (73, 148102), (76, 148189), (79, 148297), (80, 148357), (85, 148468), (86, 148480), (87, 148489), (88, 148531), (91, 148588), (93, 148720), (96, 148735), (100, 148858), (101, 148885), (102, 148888), (103, 148891), (104, 148894), (106, 148951), (107, 148999), (109, 149059), (110, 149068), (111, 149179),

Gene: Dietrick_242 Start: 144066, Stop: 147089, Start Num: 3

Candidate Starts for Dietrick_242:

(1, 143784), (Start: 3 @144066 has 111 MA's), (4, 144132), (5, 144174), (6, 144198), (7, 144216), (8, 144255), (10, 144327), (11, 144342), (13, 144399), (14, 144405), (15, 144432), (18, 144507), (19, 144519), (22, 144594), (23, 144597), (28, 144705), (32, 144816), (34, 144903), (35, 144933), (36, 144951), (38, 144975), (40, 144990), (49, 145281), (50, 145341), (52, 145389), (53, 145398), (55, 145470), (57, 145572), (59, 145617), (61, 145647), (62, 145710), (63, 145725), (71, 145884), (72, 145908), (73, 145965), (76, 146052), (79, 146160), (80, 146220), (85, 146331), (86, 146343), (88, 146394), (91, 146451), (96, 146598), (100, 146721), (101, 146748), (102, 146751), (103, 146754), (104, 146757), (106, 146814), (107, 146862), (109, 146922), (110, 146931), (111, 147042),

Gene: DirtMonster_242 Start: 144798, Stop: 147821, Start Num: 3

Candidate Starts for DirtMonster_242:

(1, 144516), (Start: 3 @144798 has 111 MA's), (4, 144864), (5, 144906), (6, 144930), (7, 144948), (8, 144987), (10, 145059), (11, 145074), (13, 145131), (14, 145137), (15, 145164), (18, 145239), (19, 145251), (22, 145326), (23, 145329), (28, 145437), (30, 145521), (32, 145548), (34, 145635), (36, 145683), (37, 145698), (38, 145707), (40, 145722), (49, 146013), (50, 146073), (52, 146121), (53, 146130), (54, 146154), (57, 146304), (59, 146349), (61, 146379), (62, 146442), (63, 146457), (71, 146616), (72, 146640), (73, 146697), (76, 146784), (79, 146892), (80, 146952), (85, 147063), (86, 147075), (88, 147126), (91, 147183), (96, 147330), (100, 147453), (101, 147480), (102, 147483), (103,

147486), (104, 147489), (106, 147546), (107, 147594), (109, 147654), (110, 147663), (111, 147774),

Gene: Domi_247 Start: 145405, Stop: 148428, Start Num: 3

Candidate Starts for Domi_247:

(1, 145123), (Start: 3 @145405 has 111 MA's), (4, 145471), (5, 145513), (6, 145537), (7, 145555), (8, 145594), (10, 145666), (11, 145681), (13, 145738), (14, 145744), (15, 145771), (18, 145846), (19, 145858), (22, 145933), (23, 145936), (28, 146044), (30, 146128), (32, 146155), (34, 146242), (35, 146272), (36, 146290), (38, 146314), (40, 146329), (49, 146620), (50, 146680), (52, 146728), (53, 146737), (54, 146761), (57, 146911), (59, 146956), (61, 146986), (62, 147049), (63, 147064), (71, 147223), (72, 147247), (73, 147304), (76, 147391), (79, 147499), (80, 147559), (85, 147670), (86, 147682), (88, 147733), (91, 147790), (96, 147937), (100, 148060), (101, 148087), (102, 148090), (103, 148093), (104, 148096), (106, 148153), (107, 148201), (109, 148261), (110, 148270), (111, 148381),

Gene: Drazdys_250 Start: 146210, Stop: 149233, Start Num: 3

Candidate Starts for Drazdys_250:

(1, 145928), (Start: 3 @146210 has 111 MA's), (4, 146276), (5, 146318), (6, 146342), (7, 146360), (8, 146399), (10, 146471), (11, 146486), (13, 146543), (14, 146549), (15, 146576), (18, 146651), (19, 146663), (22, 146738), (23, 146741), (28, 146849), (30, 146933), (32, 146960), (34, 147047), (35, 147077), (36, 147095), (38, 147119), (40, 147134), (49, 147425), (50, 147485), (52, 147533), (53, 147542), (55, 147614), (57, 147716), (59, 147761), (61, 147791), (62, 147854), (63, 147869), (71, 148028), (72, 148052), (73, 148109), (76, 148196), (79, 148304), (80, 148364), (85, 148475), (86, 148487), (87, 148496), (88, 148538), (91, 148595), (93, 148727), (96, 148742), (100, 148865), (101, 148892), (102, 148895), (103, 148898), (104, 148901), (106, 148958), (107, 149006), (109, 149066), (110, 149075), (111, 149186),

Gene: ET08_239 Start: 144534, Stop: 147557, Start Num: 3

Candidate Starts for ET08_239:

(Start: 3 @144534 has 111 MA's), (4, 144600), (5, 144642), (6, 144666), (7, 144684), (8, 144723), (10, 144795), (11, 144810), (13, 144867), (14, 144873), (15, 144900), (18, 144975), (19, 144987), (22, 145062), (23, 145065), (28, 145173), (30, 145257), (32, 145284), (34, 145371), (35, 145401), (36, 145419), (38, 145443), (40, 145458), (49, 145749), (50, 145809), (52, 145857), (53, 145866), (54, 145890), (57, 146040), (59, 146085), (61, 146115), (62, 146178), (63, 146193), (71, 146352), (72, 146376), (73, 146433), (76, 146520), (79, 146628), (80, 146688), (85, 146799), (86, 146811), (87, 146820), (88, 146862), (91, 146919), (93, 147051), (96, 147066), (100, 147189), (101, 147216), (102, 147219), (103, 147222), (104, 147225), (106, 147282), (107, 147330), (109, 147390), (110, 147399), (111, 147510),

Gene: EasyJones_254 Start: 144586, Stop: 147609, Start Num: 3

Candidate Starts for EasyJones_254:

(1, 144304), (Start: 3 @144586 has 111 MA's), (4, 144652), (5, 144694), (6, 144718), (7, 144736), (8, 144775), (10, 144847), (11, 144862), (13, 144919), (14, 144925), (15, 144952), (18, 145027), (19, 145039), (22, 145114), (23, 145117), (28, 145225), (30, 145309), (32, 145336), (34, 145423), (35, 145453), (36, 145471), (38, 145495), (40, 145510), (49, 145801), (50, 145861), (52, 145909), (53, 145918), (55, 145990), (57, 146092), (59, 146137), (61, 146167), (62, 146230), (63, 146245), (71, 146404), (72, 146428), (73, 146485), (76, 146572), (79, 146680), (80, 146740), (85, 146851), (86, 146863), (88, 146914), (91, 146971), (96, 147118), (100, 147241), (101, 147268), (102, 147271), (103, 147274), (104, 147277), (106, 147334), (107, 147382), (109, 147442), (110, 147451), (111, 147562),

Gene: EmmaElysia_258 Start: 147081, Stop: 150104, Start Num: 3

Candidate Starts for EmmaElysia_258:

(1, 146799), (Start: 3 @147081 has 111 MA's), (4, 147147), (5, 147189), (6, 147213), (7, 147231), (8, 147270), (10, 147342), (11, 147357), (13, 147414), (14, 147420), (15, 147447), (18, 147522), (19, 147534), (22, 147609), (23, 147612), (28, 147720), (32, 147831), (34, 147918), (35, 147948), (36,

147966), (38, 147990), (40, 148005), (49, 148296), (50, 148356), (52, 148404), (53, 148413), (55, 148485), (57, 148587), (59, 148632), (61, 148662), (62, 148725), (63, 148740), (71, 148899), (72, 148923), (73, 148980), (76, 149067), (79, 149175), (80, 149235), (85, 149346), (86, 149358), (88, 149409), (91, 149466), (96, 149613), (100, 149736), (101, 149763), (102, 149766), (103, 149769), (104, 149772), (106, 149829), (107, 149877), (109, 149937), (110, 149946), (111, 150057),

Gene: ErnieJ_247 Start: 143214, Stop: 146237, Start Num: 3

Candidate Starts for ErnieJ_247:

(Start: 3 @143214 has 111 MA's), (4, 143280), (5, 143322), (6, 143346), (7, 143364), (8, 143403), (10, 143475), (11, 143490), (13, 143547), (14, 143553), (15, 143580), (18, 143655), (19, 143667), (22, 143742), (23, 143745), (28, 143853), (30, 143937), (32, 143964), (34, 144051), (35, 144081), (36, 144099), (38, 144123), (40, 144138), (49, 144429), (50, 144489), (52, 144537), (53, 144546), (55, 144618), (57, 144720), (59, 144765), (61, 144795), (62, 144858), (63, 144873), (71, 145032), (72, 145056), (73, 145113), (76, 145200), (79, 145308), (80, 145368), (85, 145479), (86, 145491), (88, 145542), (91, 145599), (96, 145746), (100, 145869), (101, 145896), (102, 145899), (103, 145902), (104, 145905), (106, 145962), (107, 146010), (109, 146070), (110, 146079), (111, 146190),

Gene: Essence_251 Start: 145422, Stop: 148445, Start Num: 3

Candidate Starts for Essence_251:

(1, 145140), (Start: 3 @145422 has 111 MA's), (4, 145488), (5, 145530), (6, 145554), (7, 145572), (8, 145611), (10, 145683), (11, 145698), (13, 145755), (14, 145761), (15, 145788), (18, 145863), (19, 145875), (22, 145950), (23, 145953), (28, 146061), (30, 146145), (32, 146172), (34, 146259), (35, 146289), (36, 146307), (38, 146331), (40, 146346), (49, 146637), (50, 146697), (52, 146745), (53, 146754), (55, 146826), (57, 146928), (59, 146973), (61, 147003), (62, 147066), (63, 147081), (71, 147240), (72, 147264), (73, 147321), (76, 147408), (79, 147516), (80, 147576), (85, 147687), (86, 147699), (88, 147750), (91, 147807), (96, 147954), (100, 148077), (101, 148104), (102, 148107), (103, 148110), (104, 148113), (106, 148170), (107, 148218), (109, 148278), (110, 148287), (111, 148398),

Gene: Flabslab_248 Start: 142479, Stop: 145502, Start Num: 3

Candidate Starts for Flabslab_248:

(1, 142197), (Start: 3 @142479 has 111 MA's), (4, 142545), (5, 142587), (6, 142611), (7, 142629), (8, 142668), (10, 142740), (11, 142755), (13, 142812), (14, 142818), (15, 142845), (18, 142920), (19, 142932), (22, 143007), (23, 143010), (28, 143118), (30, 143202), (32, 143229), (34, 143316), (35, 143346), (36, 143364), (38, 143388), (40, 143403), (49, 143694), (50, 143754), (52, 143802), (53, 143811), (55, 143883), (57, 143985), (59, 144030), (61, 144060), (62, 144123), (63, 144138), (71, 144297), (72, 144321), (73, 144378), (76, 144465), (79, 144573), (80, 144633), (85, 144744), (86, 144756), (87, 144765), (88, 144807), (91, 144864), (93, 144996), (96, 145011), (100, 145134), (101, 145161), (102, 145164), (103, 145167), (104, 145170), (106, 145227), (107, 145275), (109, 145335), (110, 145344), (111, 145455),

Gene: Fludd_253 Start: 144298, Stop: 147321, Start Num: 3

Candidate Starts for Fludd_253:

(1, 144016), (Start: 3 @144298 has 111 MA's), (4, 144364), (5, 144406), (6, 144430), (7, 144448), (8, 144487), (10, 144559), (11, 144574), (13, 144631), (14, 144637), (15, 144664), (18, 144739), (19, 144751), (22, 144826), (23, 144829), (28, 144937), (32, 145048), (34, 145135), (35, 145165), (36, 145183), (38, 145207), (40, 145222), (49, 145513), (50, 145573), (52, 145621), (53, 145630), (55, 145702), (57, 145804), (59, 145849), (61, 145879), (62, 145942), (63, 145957), (71, 146116), (72, 146140), (73, 146197), (76, 146284), (79, 146392), (85, 146563), (86, 146575), (88, 146626), (91, 146683), (96, 146830), (100, 146953), (101, 146980), (102, 146983), (103, 146986), (104, 146989), (106, 147046), (107, 147094), (109, 147154), (110, 147163), (111, 147274),

Gene: FrayBell_256 Start: 144429, Stop: 147452, Start Num: 3

Candidate Starts for FrayBell_256:

(1, 144147), (Start: 3 @144429 has 111 MA's), (4, 144495), (5, 144537), (6, 144561), (7, 144579), (8, 144618), (10, 144690), (11, 144705), (13, 144762), (14, 144768), (15, 144795), (18, 144870), (19, 144882), (22, 144957), (23, 144960), (28, 145068), (30, 145152), (32, 145179), (34, 145266), (35, 145296), (36, 145314), (38, 145338), (40, 145353), (49, 145644), (50, 145704), (52, 145752), (53, 145761), (54, 145785), (57, 145935), (59, 145980), (61, 146010), (62, 146073), (63, 146088), (71, 146247), (72, 146271), (73, 146328), (76, 146415), (79, 146523), (80, 146583), (85, 146694), (86, 146706), (87, 146715), (88, 146757), (91, 146814), (93, 146946), (96, 146961), (100, 147084), (101, 147111), (102, 147114), (103, 147117), (104, 147120), (106, 147177), (107, 147225), (109, 147285), (110, 147294), (111, 147405),

Gene: Gabriel_256 Start: 144457, Stop: 147480, Start Num: 3

Candidate Starts for Gabriel_256:

(1, 144175), (Start: 3 @144457 has 111 MA's), (4, 144523), (5, 144565), (6, 144589), (7, 144607), (8, 144646), (10, 144718), (11, 144733), (13, 144790), (14, 144796), (15, 144823), (18, 144898), (19, 144910), (22, 144985), (23, 144988), (28, 145096), (30, 145180), (32, 145207), (34, 145294), (35, 145324), (36, 145342), (38, 145366), (40, 145381), (49, 145672), (50, 145732), (52, 145780), (53, 145789), (55, 145861), (57, 145963), (59, 146008), (61, 146038), (62, 146101), (63, 146116), (71, 146275), (72, 146299), (73, 146356), (76, 146443), (79, 146551), (80, 146611), (85, 146722), (86, 146734), (87, 146743), (88, 146785), (91, 146842), (93, 146974), (96, 146989), (100, 147112), (101, 147139), (102, 147142), (103, 147145), (104, 147148), (106, 147205), (107, 147253), (109, 147313), (110, 147322), (111, 147433),

Gene: Gamgam_255 Start: 144814, Stop: 147837, Start Num: 3

Candidate Starts for Gamgam_255:

(1, 144532), (Start: 3 @144814 has 111 MA's), (4, 144880), (5, 144922), (6, 144946), (7, 144964), (8, 145003), (10, 145075), (11, 145090), (13, 145147), (14, 145153), (15, 145180), (18, 145255), (19, 145267), (22, 145342), (23, 145345), (28, 145453), (32, 145564), (34, 145651), (35, 145681), (36, 145699), (38, 145723), (40, 145738), (49, 146029), (50, 146089), (52, 146137), (53, 146146), (55, 146218), (57, 146320), (59, 146365), (61, 146395), (62, 146458), (63, 146473), (71, 146632), (72, 146656), (73, 146713), (76, 146800), (79, 146908), (85, 147079), (86, 147091), (88, 147142), (91, 147199), (96, 147346), (100, 147469), (101, 147496), (102, 147499), (103, 147502), (104, 147505), (106, 147562), (107, 147610), (109, 147670), (110, 147679), (111, 147790),

Gene: Ghost_253 Start: 145438, Stop: 148461, Start Num: 3

Candidate Starts for Ghost_253:

(1, 145156), (Start: 3 @145438 has 111 MA's), (4, 145504), (5, 145546), (6, 145570), (7, 145588), (8, 145627), (10, 145699), (11, 145714), (13, 145771), (14, 145777), (15, 145804), (18, 145879), (19, 145891), (22, 145966), (23, 145969), (28, 146077), (32, 146188), (34, 146275), (35, 146305), (36, 146323), (38, 146347), (40, 146362), (49, 146653), (50, 146713), (52, 146761), (53, 146770), (55, 146842), (57, 146944), (59, 146989), (61, 147019), (62, 147082), (63, 147097), (71, 147256), (72, 147280), (73, 147337), (76, 147424), (79, 147532), (85, 147703), (86, 147715), (88, 147766), (91, 147823), (96, 147970), (100, 148093), (101, 148120), (102, 148123), (103, 148126), (104, 148129), (106, 148186), (107, 148234), (109, 148294), (110, 148303), (111, 148414),

Gene: Grungle_235 Start: 142703, Stop: 145726, Start Num: 3

Candidate Starts for Grungle_235:

(1, 142421), (Start: 3 @142703 has 111 MA's), (4, 142769), (5, 142811), (6, 142835), (7, 142853), (8, 142892), (10, 142964), (11, 142979), (13, 143036), (14, 143042), (15, 143069), (18, 143144), (19, 143156), (22, 143231), (23, 143234), (28, 143342), (30, 143426), (32, 143453), (34, 143540), (35, 143570), (36, 143588), (38, 143612), (40, 143627), (49, 143918), (50, 143978), (52, 144026), (53, 144035), (54, 144059), (57, 144209), (59, 144254), (61, 144284), (62, 144347), (63, 144362), (71, 144521), (72, 144545), (73, 144602), (76, 144689), (79, 144797), (80, 144857), (85, 144968), (86, 144980), (87, 144989), (88, 145031), (91, 145088), (93, 145220), (96, 145235), (100, 145358), (101,

145385), (102, 145388), (103, 145391), (104, 145394), (106, 145451), (107, 145499), (109, 145559), (110, 145568), (111, 145679),

Gene: Halldule_245 Start: 143885, Stop: 146908, Start Num: 3

Candidate Starts for Halldule_245:

(1, 143603), (Start: 3 @143885 has 111 MA's), (4, 143951), (5, 143993), (6, 144017), (7, 144035), (8, 144074), (10, 144146), (11, 144161), (13, 144218), (14, 144224), (15, 144251), (18, 144326), (19, 144338), (22, 144413), (23, 144416), (28, 144524), (30, 144608), (32, 144635), (34, 144722), (35, 144752), (36, 144770), (38, 144794), (40, 144809), (49, 145100), (50, 145160), (52, 145208), (53, 145217), (54, 145241), (57, 145391), (59, 145436), (61, 145466), (62, 145529), (63, 145544), (71, 145703), (72, 145727), (73, 145784), (76, 145871), (79, 145979), (80, 146039), (85, 146150), (86, 146162), (87, 146171), (88, 146213), (91, 146270), (93, 146402), (96, 146417), (100, 146540), (101, 146567), (102, 146570), (103, 146573), (104, 146576), (106, 146633), (107, 146681), (109, 146741), (110, 146750), (111, 146861),

Gene: IkeLoa_247 Start: 145170, Stop: 148193, Start Num: 3

Candidate Starts for IkeLoa_247:

(1, 144888), (Start: 3 @145170 has 111 MA's), (4, 145236), (5, 145278), (6, 145302), (7, 145320), (8, 145359), (10, 145431), (11, 145446), (13, 145503), (14, 145509), (15, 145536), (18, 145611), (19, 145623), (22, 145698), (23, 145701), (28, 145809), (30, 145893), (32, 145920), (34, 146007), (35, 146037), (36, 146055), (38, 146079), (40, 146094), (49, 146385), (50, 146445), (52, 146493), (53, 146502), (54, 146526), (57, 146676), (59, 146721), (61, 146751), (62, 146814), (63, 146829), (71, 146988), (72, 147012), (73, 147069), (76, 147156), (79, 147264), (80, 147324), (85, 147435), (86, 147447), (87, 147456), (88, 147498), (91, 147555), (93, 147687), (96, 147702), (100, 147825), (101, 147852), (102, 147855), (103, 147858), (104, 147861), (106, 147918), (107, 147966), (109, 148026), (110, 148035), (111, 148146),

Gene: InigoMontoya_257 Start: 145488, Stop: 148511, Start Num: 3

Candidate Starts for InigoMontoya_257:

(1, 145206), (Start: 3 @145488 has 111 MA's), (4, 145554), (5, 145596), (6, 145620), (7, 145638), (8, 145677), (10, 145749), (11, 145764), (13, 145821), (14, 145827), (15, 145854), (18, 145929), (19, 145941), (22, 146016), (23, 146019), (28, 146127), (32, 146238), (34, 146325), (35, 146355), (36, 146373), (38, 146397), (40, 146412), (49, 146703), (50, 146763), (52, 146811), (53, 146820), (55, 146892), (57, 146994), (59, 147039), (61, 147069), (62, 147132), (63, 147147), (71, 147306), (72, 147330), (73, 147387), (76, 147474), (79, 147582), (85, 147753), (86, 147765), (88, 147816), (91, 147873), (96, 148020), (100, 148143), (101, 148170), (102, 148173), (103, 148176), (104, 148179), (106, 148236), (107, 148284), (109, 148344), (110, 148353), (111, 148464),

Gene: InterFolia_255 Start: 146234, Stop: 149257, Start Num: 3

Candidate Starts for InterFolia_255:

(1, 145952), (Start: 3 @146234 has 111 MA's), (4, 146300), (5, 146342), (6, 146366), (7, 146384), (8, 146423), (10, 146495), (11, 146510), (13, 146567), (14, 146573), (15, 146600), (18, 146675), (19, 146687), (22, 146762), (23, 146765), (28, 146873), (30, 146957), (32, 146984), (34, 147071), (35, 147101), (36, 147119), (38, 147143), (40, 147158), (49, 147449), (50, 147509), (52, 147557), (53, 147566), (54, 147590), (57, 147740), (59, 147785), (61, 147815), (62, 147878), (63, 147893), (71, 148052), (72, 148076), (73, 148133), (76, 148220), (79, 148328), (80, 148388), (85, 148499), (86, 148511), (87, 148520), (88, 148562), (91, 148619), (93, 148751), (96, 148766), (100, 148889), (101, 148916), (102, 148919), (103, 148922), (104, 148925), (106, 148982), (107, 149030), (109, 149090), (110, 149099), (111, 149210),

Gene: Iota_250 Start: 145200, Stop: 148223, Start Num: 3

Candidate Starts for Iota_250:

(1, 144918), (Start: 3 @145200 has 111 MA's), (4, 145266), (5, 145308), (6, 145332), (7, 145350), (8, 145389), (10, 145461), (11, 145476), (13, 145533), (14, 145539), (15, 145566), (18, 145641), (19, 145653), (22, 145728), (23, 145731), (28, 145839), (30, 145923), (32, 145950), (34, 146037), (35, 146067), (36, 146085), (38, 146109), (40, 146124), (49, 146415), (50, 146475), (52, 146523), (53, 146532), (54, 146556), (57, 146706), (59, 146751), (61, 146781), (62, 146844), (63, 146859), (71, 147018), (72, 147042), (73, 147099), (76, 147186), (79, 147294), (80, 147354), (85, 147465), (86, 147477), (87, 147486), (88, 147528), (91, 147585), (93, 147717), (96, 147732), (100, 147855), (101, 147882), (102, 147885), (103, 147888), (104, 147891), (106, 147948), (107, 147996), (109, 148056), (110, 148065), (111, 148176),

Gene: Issimir_247 Start: 145575, Stop: 148598, Start Num: 3

Candidate Starts for Issimir_247:

(1, 145293), (Start: 3 @145575 has 111 MA's), (4, 145641), (5, 145683), (6, 145707), (7, 145725), (8, 145764), (10, 145836), (11, 145851), (13, 145908), (14, 145914), (15, 145941), (18, 146016), (19, 146028), (22, 146103), (23, 146106), (28, 146214), (30, 146298), (32, 146325), (34, 146412), (35, 146442), (36, 146460), (38, 146484), (40, 146499), (49, 146790), (50, 146850), (52, 146898), (53, 146907), (54, 146931), (57, 147081), (59, 147126), (61, 147156), (62, 147219), (63, 147234), (71, 147393), (72, 147417), (73, 147474), (76, 147561), (79, 147669), (80, 147729), (85, 147840), (86, 147852), (87, 147861), (88, 147903), (91, 147960), (93, 148092), (96, 148107), (100, 148230), (101, 148257), (102, 148260), (103, 148263), (104, 148266), (106, 148323), (107, 148371), (109, 148431), (110, 148440), (111, 148551),

Gene: Izajani_249 Start: 146020, Stop: 149043, Start Num: 3

Candidate Starts for Izajani_249:

(1, 145738), (Start: 3 @146020 has 111 MA's), (4, 146086), (5, 146128), (6, 146152), (7, 146170), (8, 146209), (10, 146281), (11, 146296), (13, 146353), (14, 146359), (15, 146386), (18, 146461), (19, 146473), (22, 146548), (23, 146551), (28, 146659), (30, 146743), (32, 146770), (34, 146857), (35, 146887), (36, 146905), (38, 146929), (40, 146944), (49, 147235), (50, 147295), (52, 147343), (53, 147352), (54, 147376), (57, 147526), (59, 147571), (61, 147601), (62, 147664), (63, 147679), (71, 147838), (72, 147862), (73, 147919), (76, 148006), (79, 148114), (80, 148174), (85, 148285), (86, 148297), (87, 148306), (88, 148348), (91, 148405), (93, 148537), (96, 148552), (100, 148675), (101, 148702), (102, 148705), (103, 148708), (104, 148711), (106, 148768), (107, 148816), (109, 148876), (110, 148885), (111, 148996),

Gene: JPickles_251 Start: 144625, Stop: 147648, Start Num: 3

Candidate Starts for JPickles_251:

(1, 144343), (Start: 3 @144625 has 111 MA's), (4, 144691), (5, 144733), (6, 144757), (7, 144775), (8, 144814), (10, 144886), (11, 144901), (13, 144958), (14, 144964), (15, 144991), (18, 145066), (19, 145078), (22, 145153), (23, 145156), (28, 145264), (30, 145348), (32, 145375), (34, 145462), (35, 145492), (36, 145510), (38, 145534), (40, 145549), (49, 145840), (50, 145900), (52, 145948), (53, 145957), (55, 146029), (57, 146131), (59, 146176), (61, 146206), (62, 146269), (63, 146284), (71, 146443), (72, 146467), (73, 146524), (76, 146611), (79, 146719), (80, 146779), (85, 146890), (86, 146902), (88, 146953), (91, 147010), (96, 147157), (100, 147280), (101, 147307), (102, 147310), (103, 147313), (104, 147316), (106, 147373), (107, 147421), (109, 147481), (110, 147490), (111, 147601),

Gene: Janiyra_257 Start: 146162, Stop: 149185, Start Num: 3

Candidate Starts for Janiyra_257:

(1, 145880), (Start: 3 @146162 has 111 MA's), (4, 146228), (5, 146270), (6, 146294), (7, 146312), (8, 146351), (10, 146423), (11, 146438), (13, 146495), (14, 146501), (15, 146528), (18, 146603), (19, 146615), (22, 146690), (23, 146693), (28, 146801), (32, 146912), (34, 146999), (35, 147029), (36, 147047), (38, 147071), (40, 147086), (49, 147377), (50, 147437), (52, 147485), (53, 147494), (55, 147566), (57, 147668), (59, 147713), (61, 147743), (62, 147806), (63, 147821), (71, 147980), (72, 148004), (73, 148061), (76, 148148), (79, 148256), (80, 148316), (85, 148427), (86, 148439), (88,

148490), (91, 148547), (96, 148694), (100, 148817), (101, 148844), (102, 148847), (103, 148850), (104, 148853), (106, 148910), (107, 148958), (109, 149018), (110, 149027), (111, 149138),

Gene: Jaygup_250 Start: 145347, Stop: 148370, Start Num: 3

Candidate Starts for Jaygup_250:

(1, 145065), (Start: 3 @145347 has 111 MA's), (4, 145413), (5, 145455), (6, 145479), (7, 145497), (8, 145536), (10, 145608), (11, 145623), (13, 145680), (14, 145686), (15, 145713), (18, 145788), (19, 145800), (22, 145875), (23, 145878), (28, 145986), (30, 146070), (32, 146097), (34, 146184), (35, 146214), (36, 146232), (38, 146256), (40, 146271), (49, 146562), (50, 146622), (52, 146670), (53, 146679), (55, 146751), (57, 146853), (59, 146898), (61, 146928), (62, 146991), (63, 147006), (71, 147165), (72, 147189), (73, 147246), (76, 147333), (79, 147441), (80, 147501), (85, 147612), (86, 147624), (87, 147633), (88, 147675), (91, 147732), (93, 147864), (96, 147879), (100, 148002), (101, 148029), (102, 148032), (103, 148035), (104, 148038), (106, 148095), (107, 148143), (109, 148203), (110, 148212), (111, 148323),

Gene: Jedediah_255 Start: 146400, Stop: 149423, Start Num: 3

Candidate Starts for Jedediah_255:

(1, 146118), (Start: 3 @146400 has 111 MA's), (4, 146466), (5, 146508), (6, 146532), (7, 146550), (8, 146589), (10, 146661), (11, 146676), (13, 146733), (14, 146739), (15, 146766), (18, 146841), (19, 146853), (22, 146928), (23, 146931), (28, 147039), (32, 147150), (34, 147237), (35, 147267), (36, 147285), (38, 147309), (40, 147324), (49, 147615), (50, 147675), (52, 147723), (53, 147732), (55, 147804), (57, 147906), (59, 147951), (61, 147981), (62, 148044), (63, 148059), (71, 148218), (72, 148242), (73, 148299), (76, 148386), (79, 148494), (85, 148665), (86, 148677), (88, 148728), (91, 148785), (96, 148932), (100, 149055), (101, 149082), (102, 149085), (103, 149088), (104, 149091), (106, 149148), (107, 149196), (109, 149256), (110, 149265), (111, 149376),

Gene: Jemmno_253 Start: 145119, Stop: 148142, Start Num: 3

Candidate Starts for Jemmno_253:

(1, 144837), (Start: 3 @145119 has 111 MA's), (4, 145185), (5, 145227), (6, 145251), (7, 145269), (8, 145308), (10, 145380), (11, 145395), (13, 145452), (14, 145458), (15, 145485), (18, 145560), (19, 145572), (22, 145647), (23, 145650), (28, 145758), (32, 145869), (34, 145956), (35, 145986), (36, 146004), (38, 146028), (40, 146043), (49, 146334), (50, 146394), (52, 146442), (53, 146451), (55, 146523), (57, 146625), (59, 146670), (61, 146700), (62, 146763), (63, 146778), (71, 146937), (72, 146961), (73, 147018), (76, 147105), (79, 147213), (85, 147384), (86, 147396), (88, 147447), (91, 147504), (96, 147651), (100, 147774), (101, 147801), (102, 147804), (103, 147807), (104, 147810), (106, 147867), (107, 147915), (109, 147975), (110, 147984), (111, 148095),

Gene: JulietS_245 Start: 142699, Stop: 145722, Start Num: 3

Candidate Starts for JulietS_245:

(Start: 3 @142699 has 111 MA's), (4, 142765), (5, 142807), (6, 142831), (7, 142849), (8, 142888), (10, 142960), (11, 142975), (13, 143032), (14, 143038), (15, 143065), (18, 143140), (19, 143152), (22, 143227), (23, 143230), (28, 143338), (30, 143422), (32, 143449), (34, 143536), (35, 143566), (36, 143584), (38, 143608), (40, 143623), (49, 143914), (50, 143974), (52, 144022), (53, 144031), (54, 144055), (57, 144205), (59, 144250), (61, 144280), (62, 144343), (63, 144358), (71, 144517), (72, 144541), (73, 144598), (76, 144685), (79, 144793), (80, 144853), (85, 144964), (86, 144976), (87, 144985), (88, 145027), (91, 145084), (93, 145216), (96, 145231), (100, 145354), (101, 145381), (102, 145384), (103, 145387), (104, 145390), (106, 145447), (107, 145495), (109, 145555), (110, 145564), (111, 145675),

Gene: JustHall_247 Start: 144649, Stop: 147672, Start Num: 3

Candidate Starts for JustHall_247:

(1, 144367), (Start: 3 @144649 has 111 MA's), (4, 144715), (5, 144757), (6, 144781), (7, 144799), (8, 144838), (10, 144910), (11, 144925), (13, 144982), (14, 144988), (15, 145015), (18, 145090), (19,

145102), (22, 145177), (23, 145180), (28, 145288), (30, 145372), (32, 145399), (34, 145486), (35, 145516), (36, 145534), (38, 145558), (40, 145573), (49, 145864), (50, 145924), (52, 145972), (53, 145981), (55, 146053), (57, 146155), (59, 146200), (61, 146230), (62, 146293), (63, 146308), (71, 146467), (72, 146491), (73, 146548), (76, 146635), (79, 146743), (80, 146803), (85, 146914), (86, 146926), (88, 146977), (91, 147034), (96, 147181), (100, 147304), (101, 147331), (102, 147334), (103, 147337), (104, 147340), (106, 147397), (107, 147445), (109, 147505), (110, 147514), (111, 147625),

Gene: Kamryn_252 Start: 146239, Stop: 149262, Start Num: 3

Candidate Starts for Kamryn_252:

(1, 145957), (Start: 3 @146239 has 111 MA's), (4, 146305), (5, 146347), (6, 146371), (7, 146389), (8, 146428), (10, 146500), (11, 146515), (13, 146572), (14, 146578), (15, 146605), (18, 146680), (19, 146692), (22, 146767), (23, 146770), (28, 146878), (30, 146962), (32, 146989), (34, 147076), (35, 147106), (36, 147124), (38, 147148), (40, 147163), (49, 147454), (50, 147514), (52, 147562), (53, 147571), (54, 147595), (57, 147745), (59, 147790), (61, 147820), (62, 147883), (63, 147898), (71, 148057), (72, 148081), (73, 148138), (76, 148225), (79, 148333), (80, 148393), (85, 148504), (86, 148516), (87, 148525), (88, 148567), (91, 148624), (93, 148756), (96, 148771), (100, 148894), (101, 148921), (102, 148924), (103, 148927), (104, 148930), (106, 148987), (107, 149035), (109, 149095), (110, 149104), (111, 149215),

Gene: Kboogie_257 Start: 145278, Stop: 148301, Start Num: 3

Candidate Starts for Kboogie_257:

(1, 144996), (Start: 3 @145278 has 111 MA's), (4, 145344), (5, 145386), (6, 145410), (7, 145428), (8, 145467), (10, 145539), (11, 145554), (13, 145611), (14, 145617), (15, 145644), (18, 145719), (19, 145731), (22, 145806), (23, 145809), (28, 145917), (32, 146028), (34, 146115), (35, 146145), (36, 146163), (38, 146187), (40, 146202), (49, 146493), (50, 146553), (52, 146601), (53, 146610), (55, 146682), (57, 146784), (59, 146829), (61, 146859), (62, 146922), (63, 146937), (71, 147096), (72, 147120), (73, 147177), (76, 147264), (79, 147372), (80, 147432), (85, 147543), (86, 147555), (88, 147606), (91, 147663), (96, 147810), (100, 147933), (101, 147960), (102, 147963), (103, 147966), (104, 147969), (106, 148026), (107, 148074), (109, 148134), (110, 148143), (111, 148254),

Gene: Koguma_252 Start: 144861, Stop: 147884, Start Num: 3

Candidate Starts for Koguma_252:

(1, 144579), (Start: 3 @144861 has 111 MA's), (4, 144927), (5, 144969), (6, 144993), (7, 145011), (8, 145050), (10, 145122), (11, 145137), (13, 145194), (14, 145200), (15, 145227), (18, 145302), (19, 145314), (22, 145389), (23, 145392), (28, 145500), (30, 145584), (32, 145611), (34, 145698), (35, 145728), (36, 145746), (38, 145770), (40, 145785), (49, 146076), (50, 146136), (52, 146184), (53, 146193), (54, 146217), (57, 146367), (59, 146412), (61, 146442), (62, 146505), (63, 146520), (71, 146679), (72, 146703), (73, 146760), (76, 146847), (79, 146955), (80, 147015), (85, 147126), (86, 147138), (87, 147147), (88, 147189), (91, 147246), (93, 147378), (96, 147393), (100, 147516), (101, 147543), (102, 147546), (103, 147549), (104, 147552), (106, 147609), (107, 147657), (109, 147717), (110, 147726), (111, 147837),

Gene: LRRHood_245 Start: 144271, Stop: 147294, Start Num: 3

Candidate Starts for LRRHood_245:

(1, 143989), (Start: 3 @144271 has 111 MA's), (4, 144337), (5, 144379), (6, 144403), (7, 144421), (8, 144460), (10, 144532), (11, 144547), (13, 144604), (14, 144610), (15, 144637), (18, 144712), (19, 144724), (22, 144799), (23, 144802), (28, 144910), (30, 144994), (32, 145021), (34, 145108), (35, 145138), (36, 145156), (38, 145180), (40, 145195), (49, 145486), (50, 145546), (52, 145594), (53, 145603), (55, 145675), (57, 145777), (59, 145822), (61, 145852), (62, 145915), (63, 145930), (71, 146089), (72, 146113), (73, 146170), (76, 146257), (79, 146365), (80, 146425), (85, 146536), (86, 146548), (87, 146557), (88, 146599), (91, 146656), (93, 146788), (96, 146803), (100, 146926), (101, 146953), (102, 146956), (103, 146959), (104, 146962), (106, 147019), (107, 147067), (109, 147127), (110, 147136), (111, 147247),

Gene: Latch_253 Start: 144824, Stop: 147847, Start Num: 3

Candidate Starts for Latch_253:

(1, 144542), (Start: 3 @144824 has 111 MA's), (4, 144890), (5, 144932), (6, 144956), (7, 144974), (8, 145013), (10, 145085), (11, 145100), (13, 145157), (14, 145163), (15, 145190), (18, 145265), (19, 145277), (22, 145352), (23, 145355), (28, 145463), (32, 145574), (34, 145661), (35, 145691), (36, 145709), (38, 145733), (40, 145748), (49, 146039), (50, 146099), (52, 146147), (53, 146156), (55, 146228), (57, 146330), (59, 146375), (61, 146405), (62, 146468), (63, 146483), (71, 146642), (72, 146666), (73, 146723), (76, 146810), (79, 146918), (85, 147089), (86, 147101), (88, 147152), (91, 147209), (96, 147356), (100, 147479), (101, 147506), (102, 147509), (103, 147512), (104, 147515), (106, 147572), (107, 147620), (109, 147680), (110, 147689), (111, 147800),

Gene: Lee7_254 Start: 147925, Stop: 150948, Start Num: 3

Candidate Starts for Lee7_254:

(1, 147643), (Start: 3 @147925 has 111 MA's), (4, 147991), (5, 148033), (6, 148057), (7, 148075), (8, 148114), (10, 148186), (11, 148201), (13, 148258), (14, 148264), (15, 148291), (18, 148366), (19, 148378), (22, 148453), (23, 148456), (28, 148564), (30, 148648), (32, 148675), (34, 148762), (35, 148792), (36, 148810), (38, 148834), (40, 148849), (49, 149140), (50, 149200), (52, 149248), (53, 149257), (54, 149281), (57, 149431), (59, 149476), (61, 149506), (62, 149569), (63, 149584), (71, 149743), (72, 149767), (73, 149824), (76, 149911), (79, 150019), (80, 150079), (85, 150190), (86, 150202), (87, 150211), (88, 150253), (91, 150310), (93, 150442), (96, 150457), (100, 150580), (101, 150607), (102, 150610), (103, 150613), (104, 150616), (106, 150673), (107, 150721), (109, 150781), (110, 150790), (111, 150901),

Gene: LifeSavor_254 Start: 146052, Stop: 149075, Start Num: 3

Candidate Starts for LifeSavor_254:

(1, 145770), (Start: 3 @146052 has 111 MA's), (4, 146118), (5, 146160), (6, 146184), (7, 146202), (8, 146241), (10, 146313), (11, 146328), (13, 146385), (14, 146391), (15, 146418), (18, 146493), (19, 146505), (22, 146580), (23, 146583), (28, 146691), (30, 146775), (32, 146802), (34, 146889), (35, 146919), (36, 146937), (38, 146961), (40, 146976), (49, 147267), (50, 147327), (52, 147375), (53, 147384), (55, 147456), (57, 147558), (59, 147603), (61, 147633), (62, 147696), (63, 147711), (71, 147870), (72, 147894), (73, 147951), (76, 148038), (79, 148146), (80, 148206), (85, 148317), (86, 148329), (87, 148338), (88, 148380), (91, 148437), (93, 148569), (96, 148584), (100, 148707), (101, 148734), (102, 148737), (103, 148740), (104, 148743), (106, 148800), (107, 148848), (109, 148908), (110, 148917), (111, 149028),

Gene: LinStu_250 Start: 144153, Stop: 147176, Start Num: 3

Candidate Starts for LinStu_250:

(Start: 3 @144153 has 111 MA's), (4, 144219), (5, 144261), (6, 144285), (7, 144303), (8, 144342), (10, 144414), (11, 144429), (13, 144486), (14, 144492), (15, 144519), (18, 144594), (19, 144606), (22, 144681), (23, 144684), (28, 144792), (32, 144903), (34, 144990), (35, 145020), (36, 145038), (38, 145062), (40, 145077), (49, 145368), (50, 145428), (52, 145476), (53, 145485), (55, 145557), (57, 145659), (59, 145704), (61, 145734), (62, 145797), (63, 145812), (71, 145971), (72, 145995), (73, 146052), (76, 146139), (79, 146247), (80, 146307), (85, 146418), (86, 146430), (88, 146481), (91, 146538), (96, 146685), (100, 146808), (101, 146835), (102, 146838), (103, 146841), (104, 146844), (106, 146901), (107, 146949), (109, 147009), (110, 147018), (111, 147129),

Gene: Littleton_257 Start: 146061, Stop: 149084, Start Num: 3

Candidate Starts for Littleton_257:

(1, 145779), (Start: 3 @146061 has 111 MA's), (4, 146127), (5, 146169), (6, 146193), (7, 146211), (8, 146250), (10, 146322), (11, 146337), (13, 146394), (14, 146400), (15, 146427), (18, 146502), (19, 146514), (22, 146589), (23, 146592), (28, 146700), (32, 146811), (34, 146898), (35, 146928), (36, 146946), (38, 146970), (40, 146985), (49, 147276), (50, 147336), (52, 147384), (53, 147393), (55,

147465), (57, 147567), (59, 147612), (61, 147642), (62, 147705), (63, 147720), (71, 147879), (72, 147903), (73, 147960), (76, 148047), (79, 148155), (80, 148215), (85, 148326), (86, 148338), (88, 148389), (91, 148446), (96, 148593), (100, 148716), (101, 148743), (102, 148746), (103, 148749), (104, 148752), (106, 148809), (107, 148857), (109, 148917), (110, 148926), (111, 149037),

Gene: LolaVinca_249 Start: 145664, Stop: 148687, Start Num: 3

Candidate Starts for LolaVinca_249:

(1, 145382), (Start: 3 @145664 has 111 MA's), (4, 145730), (5, 145772), (6, 145796), (7, 145814), (8, 145853), (10, 145925), (11, 145940), (13, 145997), (14, 146003), (15, 146030), (18, 146105), (19, 146117), (22, 146192), (23, 146195), (28, 146303), (30, 146387), (32, 146414), (34, 146501), (35, 146531), (36, 146549), (38, 146573), (40, 146588), (49, 146879), (50, 146939), (52, 146987), (53, 146996), (54, 147020), (57, 147170), (59, 147215), (61, 147245), (62, 147308), (63, 147323), (71, 147482), (72, 147506), (73, 147563), (76, 147650), (79, 147758), (80, 147818), (85, 147929), (86, 147941), (87, 147950), (88, 147992), (91, 148049), (93, 148181), (96, 148196), (100, 148319), (101, 148346), (102, 148349), (103, 148352), (104, 148355), (106, 148412), (107, 148460), (109, 148520), (110, 148529), (111, 148640),

Gene: LordLeafolot_255 Start: 145277, Stop: 148300, Start Num: 3

Candidate Starts for LordLeafolot_255:

(1, 144995), (Start: 3 @145277 has 111 MA's), (4, 145343), (5, 145385), (6, 145409), (7, 145427), (8, 145466), (10, 145538), (11, 145553), (13, 145610), (14, 145616), (15, 145643), (18, 145718), (19, 145730), (22, 145805), (23, 145808), (28, 145916), (30, 146000), (32, 146027), (34, 146114), (35, 146144), (36, 146162), (38, 146186), (40, 146201), (49, 146492), (50, 146552), (52, 146600), (53, 146609), (54, 146633), (57, 146783), (59, 146828), (61, 146858), (62, 146921), (63, 146936), (71, 147095), (72, 147119), (73, 147176), (76, 147263), (79, 147371), (80, 147431), (85, 147542), (86, 147554), (87, 147563), (88, 147605), (91, 147662), (93, 147794), (96, 147809), (100, 147932), (101, 147959), (102, 147962), (103, 147965), (104, 147968), (106, 148025), (107, 148073), (109, 148133), (110, 148142), (111, 148253),

Gene: Lukilu_242 Start: 146280, Stop: 149303, Start Num: 3

Candidate Starts for Lukilu_242:

(1, 145998), (Start: 3 @146280 has 111 MA's), (4, 146346), (5, 146388), (6, 146412), (7, 146430), (8, 146469), (10, 146541), (11, 146556), (13, 146613), (14, 146619), (15, 146646), (18, 146721), (19, 146733), (22, 146808), (23, 146811), (28, 146919), (30, 147003), (32, 147030), (34, 147117), (35, 147147), (36, 147165), (38, 147189), (40, 147204), (49, 147495), (50, 147555), (52, 147603), (53, 147612), (54, 147636), (57, 147786), (59, 147831), (61, 147861), (62, 147924), (63, 147939), (71, 148098), (72, 148122), (73, 148179), (76, 148266), (79, 148374), (80, 148434), (85, 148545), (86, 148557), (87, 148566), (88, 148608), (91, 148665), (93, 148797), (96, 148812), (100, 148935), (101, 148962), (102, 148965), (103, 148968), (104, 148971), (106, 149028), (107, 149076), (109, 149136), (110, 149145), (111, 149256),

Gene: Mangeria_253 Start: 146175, Stop: 149198, Start Num: 3

Candidate Starts for Mangeria_253:

(1, 145893), (Start: 3 @146175 has 111 MA's), (4, 146241), (5, 146283), (6, 146307), (7, 146325), (8, 146364), (10, 146436), (11, 146451), (13, 146508), (14, 146514), (15, 146541), (18, 146616), (19, 146628), (22, 146703), (23, 146706), (28, 146814), (32, 146925), (34, 147012), (35, 147042), (36, 147060), (38, 147084), (40, 147099), (49, 147390), (50, 147450), (52, 147498), (53, 147507), (54, 147531), (57, 147681), (59, 147726), (61, 147756), (62, 147819), (63, 147834), (71, 147993), (72, 148017), (73, 148074), (76, 148161), (79, 148269), (80, 148329), (85, 148440), (86, 148452), (87, 148461), (88, 148503), (91, 148560), (93, 148692), (96, 148707), (100, 148830), (101, 148857), (102, 148860), (103, 148863), (104, 148866), (106, 148923), (107, 148971), (109, 149031), (110, 149040), (111, 149151),

Gene: Matsumoto_251 Start: 145266, Stop: 148289, Start Num: 3

Candidate Starts for Matsumoto_251:

(1, 144984), (Start: 3 @145266 has 111 MA's), (4, 145332), (5, 145374), (6, 145398), (7, 145416), (8, 145455), (10, 145527), (11, 145542), (13, 145599), (14, 145605), (15, 145632), (18, 145707), (19, 145719), (22, 145794), (23, 145797), (28, 145905), (30, 145989), (32, 146016), (34, 146103), (35, 146133), (36, 146151), (38, 146175), (40, 146190), (49, 146481), (50, 146541), (52, 146589), (53, 146598), (55, 146670), (57, 146772), (59, 146817), (61, 146847), (62, 146910), (63, 146925), (71, 147084), (72, 147108), (73, 147165), (76, 147252), (79, 147360), (80, 147420), (85, 147531), (86, 147543), (88, 147594), (91, 147651), (96, 147798), (100, 147921), (101, 147948), (102, 147951), (103, 147954), (104, 147957), (106, 148014), (107, 148062), (109, 148122), (110, 148131), (111, 148242),

Gene: McGee_255 Start: 145612, Stop: 148635, Start Num: 3

Candidate Starts for McGee_255:

(1, 145330), (Start: 3 @145612 has 111 MA's), (4, 145678), (5, 145720), (6, 145744), (7, 145762), (8, 145801), (10, 145873), (11, 145888), (13, 145945), (14, 145951), (15, 145978), (18, 146053), (19, 146065), (22, 146140), (23, 146143), (28, 146251), (32, 146362), (34, 146449), (35, 146479), (36, 146497), (38, 146521), (40, 146536), (49, 146827), (50, 146887), (52, 146935), (53, 146944), (55, 147016), (57, 147118), (59, 147163), (61, 147193), (62, 147256), (63, 147271), (71, 147430), (72, 147454), (73, 147511), (76, 147598), (79, 147706), (80, 147766), (85, 147877), (86, 147889), (88, 147940), (91, 147997), (96, 148144), (100, 148267), (101, 148294), (102, 148297), (103, 148300), (104, 148303), (106, 148360), (107, 148408), (109, 148468), (110, 148477), (111, 148588),

Gene: Melpomini_248 Start: 144358, Stop: 147381, Start Num: 3

Candidate Starts for Melpomini_248:

(1, 144076), (Start: 3 @144358 has 111 MA's), (4, 144424), (5, 144466), (6, 144490), (7, 144508), (8, 144547), (10, 144619), (11, 144634), (13, 144691), (14, 144697), (15, 144724), (18, 144799), (19, 144811), (22, 144886), (23, 144889), (28, 144997), (32, 145108), (34, 145195), (35, 145225), (36, 145243), (38, 145267), (40, 145282), (49, 145573), (50, 145633), (52, 145681), (53, 145690), (55, 145762), (57, 145864), (59, 145909), (61, 145939), (62, 146002), (63, 146017), (71, 146176), (72, 146200), (73, 146257), (76, 146344), (79, 146452), (80, 146512), (85, 146623), (86, 146635), (88, 146686), (91, 146743), (96, 146890), (100, 147013), (101, 147040), (102, 147043), (103, 147046), (104, 147049), (106, 147106), (107, 147154), (109, 147214), (110, 147223), (111, 147334),

Gene: Mikro_247 Start: 147177, Stop: 150200, Start Num: 3

Candidate Starts for Mikro_247:

(1, 146895), (Start: 3 @147177 has 111 MA's), (4, 147243), (5, 147285), (6, 147309), (7, 147327), (8, 147366), (10, 147438), (11, 147453), (13, 147510), (14, 147516), (15, 147543), (18, 147618), (19, 147630), (22, 147705), (23, 147708), (28, 147816), (30, 147900), (32, 147927), (34, 148014), (35, 148044), (36, 148062), (38, 148086), (40, 148101), (49, 148392), (50, 148452), (52, 148500), (53, 148509), (54, 148533), (57, 148683), (59, 148728), (61, 148758), (62, 148821), (63, 148836), (71, 148995), (72, 149019), (73, 149076), (76, 149163), (79, 149271), (80, 149331), (85, 149442), (86, 149454), (87, 149463), (88, 149505), (91, 149562), (93, 149694), (96, 149709), (100, 149832), (101, 149859), (102, 149862), (103, 149865), (104, 149868), (106, 149925), (107, 149973), (109, 150033), (110, 150042), (111, 150153),

Gene: Momo_255 Start: 144824, Stop: 147847, Start Num: 3

Candidate Starts for Momo_255:

(1, 144542), (Start: 3 @144824 has 111 MA's), (4, 144890), (5, 144932), (6, 144956), (7, 144974), (8, 145013), (10, 145085), (11, 145100), (13, 145157), (14, 145163), (15, 145190), (18, 145265), (19, 145277), (22, 145352), (23, 145355), (28, 145463), (32, 145574), (34, 145661), (35, 145691), (36, 145709), (38, 145733), (40, 145748), (49, 146039), (50, 146099), (52, 146147), (53, 146156), (55, 146228), (57, 146330), (59, 146375), (61, 146405), (62, 146468), (63, 146483), (71, 146642), (72, 146666), (73, 146723), (76, 146810), (79, 146918), (85, 147089), (86, 147101), (88, 147152), (91,

147209), (96, 147356), (100, 147479), (101, 147506), (102, 147509), (103, 147512), (104, 147515), (106, 147572), (107, 147620), (109, 147680), (110, 147689), (111, 147800),

Gene: Morizzled23_251 Start: 144640, Stop: 147663, Start Num: 3

Candidate Starts for Morizzled23_251:

(1, 144358), (Start: 3 @144640 has 111 MA's), (4, 144706), (5, 144748), (6, 144772), (7, 144790), (8, 144829), (10, 144901), (11, 144916), (13, 144973), (14, 144979), (15, 145006), (18, 145081), (19, 145093), (22, 145168), (23, 145171), (28, 145279), (30, 145363), (32, 145390), (34, 145477), (35, 145507), (36, 145525), (38, 145549), (40, 145564), (49, 145855), (50, 145915), (52, 145963), (53, 145972), (55, 146044), (57, 146146), (59, 146191), (61, 146221), (62, 146284), (63, 146299), (71, 146458), (72, 146482), (73, 146539), (76, 146626), (79, 146734), (80, 146794), (85, 146905), (86, 146917), (88, 146968), (91, 147025), (96, 147172), (100, 147295), (101, 147322), (102, 147325), (103, 147328), (104, 147331), (106, 147388), (107, 147436), (109, 147496), (110, 147505), (111, 147616),

Gene: Naija_254 Start: 145527, Stop: 148550, Start Num: 3

Candidate Starts for Naija_254:

(1, 145245), (Start: 3 @145527 has 111 MA's), (4, 145593), (5, 145635), (6, 145659), (7, 145677), (8, 145716), (10, 145788), (11, 145803), (13, 145860), (14, 145866), (15, 145893), (18, 145968), (19, 145980), (22, 146055), (23, 146058), (28, 146166), (32, 146277), (34, 146364), (35, 146394), (36, 146412), (38, 146436), (40, 146451), (49, 146742), (50, 146802), (52, 146850), (53, 146859), (55, 146931), (57, 147033), (59, 147078), (61, 147108), (62, 147171), (63, 147186), (71, 147345), (72, 147369), (73, 147426), (76, 147513), (79, 147621), (85, 147792), (86, 147804), (88, 147855), (91, 147912), (96, 148059), (100, 148182), (101, 148209), (102, 148212), (103, 148215), (104, 148218), (106, 148275), (107, 148323), (109, 148383), (110, 148392), (111, 148503),

Gene: Napoleon13_250 Start: 144556, Stop: 147579, Start Num: 3

Candidate Starts for Napoleon13_250:

(1, 144274), (Start: 3 @144556 has 111 MA's), (4, 144622), (5, 144664), (6, 144688), (7, 144706), (8, 144745), (10, 144817), (11, 144832), (13, 144889), (14, 144895), (15, 144922), (18, 144997), (19, 145009), (22, 145084), (23, 145087), (28, 145195), (32, 145306), (34, 145393), (35, 145423), (36, 145441), (38, 145465), (40, 145480), (49, 145771), (50, 145831), (52, 145879), (53, 145888), (55, 145960), (57, 146062), (59, 146107), (61, 146137), (62, 146200), (63, 146215), (71, 146374), (72, 146398), (73, 146455), (76, 146542), (79, 146650), (80, 146710), (85, 146821), (86, 146833), (88, 146884), (91, 146941), (96, 147088), (100, 147211), (101, 147238), (102, 147241), (103, 147244), (104, 147247), (106, 147304), (107, 147352), (109, 147412), (110, 147421), (111, 147532),

Gene: Naval22_258 Start: 147307, Stop: 150330, Start Num: 3

Candidate Starts for Naval22_258:

(1, 147025), (Start: 3 @147307 has 111 MA's), (4, 147373), (5, 147415), (6, 147439), (7, 147457), (8, 147496), (10, 147568), (11, 147583), (13, 147640), (14, 147646), (15, 147673), (18, 147748), (19, 147760), (22, 147835), (23, 147838), (28, 147946), (30, 148030), (32, 148057), (34, 148144), (35, 148174), (36, 148192), (38, 148216), (40, 148231), (49, 148522), (50, 148582), (52, 148630), (53, 148639), (55, 148711), (57, 148813), (59, 148858), (61, 148888), (62, 148951), (63, 148966), (71, 149125), (72, 149149), (73, 149206), (76, 149293), (79, 149401), (80, 149461), (85, 149572), (86, 149584), (87, 149593), (88, 149635), (91, 149692), (93, 149824), (96, 149839), (100, 149962), (101, 149989), (102, 149992), (103, 149995), (104, 149998), (106, 150055), (107, 150103), (109, 150163), (110, 150172), (111, 150283),

Gene: Ngannou_248 Start: 144509, Stop: 147532, Start Num: 3

Candidate Starts for Ngannou_248:

(1, 144227), (Start: 3 @144509 has 111 MA's), (4, 144575), (5, 144617), (6, 144641), (7, 144659), (8, 144698), (10, 144770), (11, 144785), (13, 144842), (14, 144848), (15, 144875), (18, 144950), (19, 144962), (22, 145037), (23, 145040), (28, 145148), (32, 145259), (34, 145346), (35, 145376), (36,

145394), (38, 145418), (40, 145433), (49, 145724), (50, 145784), (52, 145832), (53, 145841), (55, 145913), (57, 146015), (59, 146060), (61, 146090), (62, 146153), (63, 146168), (71, 146327), (72, 146351), (73, 146408), (76, 146495), (79, 146603), (85, 146774), (86, 146786), (88, 146837), (91, 146894), (96, 147041), (100, 147164), (101, 147191), (102, 147194), (103, 147197), (104, 147200), (106, 147257), (107, 147305), (109, 147365), (110, 147374), (111, 147485),

Gene: Nidhogg_254 Start: 146353, Stop: 149376, Start Num: 3

Candidate Starts for Nidhogg_254:

(1, 146071), (Start: 3 @146353 has 111 MA's), (4, 146419), (5, 146461), (6, 146485), (7, 146503), (8, 146542), (10, 146614), (11, 146629), (13, 146686), (14, 146692), (15, 146719), (18, 146794), (19, 146806), (22, 146881), (23, 146884), (28, 146992), (30, 147076), (32, 147103), (34, 147190), (35, 147220), (36, 147238), (38, 147262), (40, 147277), (49, 147568), (50, 147628), (52, 147676), (53, 147685), (54, 147709), (57, 147859), (59, 147904), (61, 147934), (62, 147997), (63, 148012), (71, 148171), (72, 148195), (73, 148252), (76, 148339), (79, 148447), (80, 148507), (85, 148618), (86, 148630), (87, 148639), (88, 148681), (91, 148738), (93, 148870), (96, 148885), (100, 149008), (101, 149035), (102, 149038), (103, 149041), (104, 149044), (106, 149101), (107, 149149), (109, 149209), (110, 149218), (111, 149329),

Gene: NoodleTree_249 Start: 141104, Stop: 144127, Start Num: 3

Candidate Starts for NoodleTree_249:

(1, 140822), (Start: 3 @141104 has 111 MA's), (4, 141170), (5, 141212), (6, 141236), (7, 141254), (8, 141293), (10, 141365), (11, 141380), (13, 141437), (14, 141443), (15, 141470), (18, 141545), (19, 141557), (22, 141632), (23, 141635), (28, 141743), (30, 141827), (32, 141854), (34, 141941), (35, 141971), (36, 141989), (38, 142013), (40, 142028), (49, 142319), (50, 142379), (52, 142427), (53, 142436), (54, 142460), (57, 142610), (59, 142655), (61, 142685), (62, 142748), (63, 142763), (71, 142922), (72, 142946), (73, 143003), (76, 143090), (79, 143198), (80, 143258), (85, 143369), (86, 143381), (87, 143390), (88, 143432), (91, 143489), (93, 143621), (96, 143636), (100, 143759), (101, 143786), (102, 143789), (103, 143792), (104, 143795), (106, 143852), (107, 143900), (109, 143960), (110, 143969), (111, 144080),

Gene: Patter_255 Start: 145484, Stop: 148507, Start Num: 3

Candidate Starts for Patter_255:

(1, 145202), (Start: 3 @145484 has 111 MA's), (4, 145550), (5, 145592), (6, 145616), (7, 145634), (8, 145673), (10, 145745), (11, 145760), (13, 145817), (14, 145823), (15, 145850), (18, 145925), (19, 145937), (22, 146012), (23, 146015), (28, 146123), (32, 146234), (34, 146321), (35, 146351), (36, 146369), (38, 146393), (40, 146408), (49, 146699), (50, 146759), (52, 146807), (53, 146816), (55, 146888), (57, 146990), (59, 147035), (61, 147065), (62, 147128), (63, 147143), (71, 147302), (72, 147326), (73, 147383), (76, 147470), (79, 147578), (80, 147638), (85, 147749), (86, 147761), (88, 147812), (91, 147869), (96, 148016), (100, 148139), (101, 148166), (102, 148169), (103, 148172), (104, 148175), (106, 148232), (107, 148280), (109, 148340), (110, 148349), (111, 148460),

Gene: Phlegm_258 Start: 146230, Stop: 149253, Start Num: 3

Candidate Starts for Phlegm_258:

(1, 145948), (Start: 3 @146230 has 111 MA's), (4, 146296), (5, 146338), (6, 146362), (7, 146380), (8, 146419), (10, 146491), (11, 146506), (13, 146563), (14, 146569), (15, 146596), (18, 146671), (19, 146683), (22, 146758), (23, 146761), (28, 146869), (32, 146980), (34, 147067), (35, 147097), (36, 147115), (38, 147139), (40, 147154), (49, 147445), (50, 147505), (52, 147553), (53, 147562), (55, 147634), (57, 147736), (59, 147781), (61, 147811), (62, 147874), (63, 147889), (71, 148048), (72, 148072), (73, 148129), (76, 148216), (79, 148324), (85, 148495), (86, 148507), (88, 148558), (91, 148615), (96, 148762), (100, 148885), (101, 148912), (102, 148915), (103, 148918), (104, 148921), (106, 148978), (107, 149026), (109, 149086), (110, 149095), (111, 149206),

Gene: Phrappuccino_2 Start: 1651, Stop: 4911, Start Num: 2

Candidate Starts for Phrappuccino_2:

(Start: 2 @1651 has 2 MA's), (8, 1867), (9, 1930), (10, 1939), (12, 2005), (16, 2053), (17, 2116), (20, 2140), (21, 2203), (22, 2206), (24, 2245), (25, 2281), (26, 2299), (27, 2317), (28, 2332), (29, 2350), (31, 2422), (32, 2443), (33, 2446), (36, 2590), (39, 2617), (41, 2674), (42, 2698), (43, 2716), (44, 2770), (45, 2830), (46, 2851), (47, 2863), (48, 2890), (51, 3022), (56, 3283), (58, 3310), (59, 3349), (60, 3358), (64, 3517), (65, 3526), (66, 3559), (67, 3598), (68, 3616), (69, 3655), (70, 3661), (74, 3772), (75, 3835), (77, 3901), (78, 3955), (79, 3991), (81, 4102), (82, 4147), (83, 4171), (84, 4201), (87, 4234), (89, 4297), (90, 4300), (92, 4432), (94, 4492), (95, 4498), (97, 4552), (98, 4573), (99, 4588), (103, 4645), (104, 4648), (105, 4702), (108, 4807),

Gene: Phusco_252 Start: 145062, Stop: 148085, Start Num: 3

Candidate Starts for Phusco_252:

(1, 144780), (Start: 3 @145062 has 111 MA's), (4, 145128), (5, 145170), (6, 145194), (7, 145212), (8, 145251), (10, 145323), (11, 145338), (13, 145395), (14, 145401), (15, 145428), (18, 145503), (19, 145515), (22, 145590), (23, 145593), (28, 145701), (30, 145785), (32, 145812), (34, 145899), (35, 145929), (36, 145947), (38, 145971), (40, 145986), (49, 146277), (50, 146337), (52, 146385), (53, 146394), (55, 146466), (57, 146568), (59, 146613), (61, 146643), (62, 146706), (63, 146721), (71, 146880), (72, 146904), (73, 146961), (76, 147048), (79, 147156), (80, 147216), (85, 147327), (86, 147339), (87, 147348), (88, 147390), (91, 147447), (93, 147579), (96, 147594), (100, 147717), (101, 147744), (102, 147747), (103, 147750), (104, 147753), (106, 147810), (107, 147858), (109, 147918), (110, 147927), (111, 148038),

Gene: Pier_252 Start: 146355, Stop: 149378, Start Num: 3

Candidate Starts for Pier_252:

(1, 146073), (Start: 3 @146355 has 111 MA's), (4, 146421), (5, 146463), (6, 146487), (7, 146505), (8, 146544), (10, 146616), (11, 146631), (13, 146688), (14, 146694), (15, 146721), (18, 146796), (19, 146808), (22, 146883), (23, 146886), (28, 146994), (30, 147078), (32, 147105), (34, 147192), (35, 147222), (36, 147240), (38, 147264), (40, 147279), (49, 147570), (50, 147630), (52, 147678), (53, 147687), (54, 147711), (57, 147861), (59, 147906), (61, 147936), (62, 147999), (63, 148014), (71, 148173), (72, 148197), (73, 148254), (76, 148341), (79, 148449), (80, 148509), (85, 148620), (86, 148632), (87, 148641), (88, 148683), (91, 148740), (93, 148872), (96, 148887), (100, 149010), (101, 149037), (102, 149040), (103, 149043), (104, 149046), (106, 149103), (107, 149151), (109, 149211), (110, 149220), (111, 149331),

Gene: Pinkcreek_233 Start: 142681, Stop: 145704, Start Num: 3

Candidate Starts for Pinkcreek_233:

(Start: 3 @142681 has 111 MA's), (4, 142747), (5, 142789), (6, 142813), (7, 142831), (8, 142870), (10, 142942), (11, 142957), (13, 143014), (14, 143020), (15, 143047), (18, 143122), (19, 143134), (22, 143209), (23, 143212), (28, 143320), (32, 143431), (34, 143518), (35, 143548), (36, 143566), (38, 143590), (40, 143605), (49, 143896), (50, 143956), (52, 144004), (53, 144013), (54, 144037), (57, 144187), (59, 144232), (61, 144262), (62, 144325), (63, 144340), (71, 144499), (72, 144523), (73, 144580), (76, 144667), (79, 144775), (80, 144835), (85, 144946), (86, 144958), (87, 144967), (88, 145009), (91, 145066), (93, 145198), (96, 145213), (100, 145336), (101, 145363), (102, 145366), (103, 145369), (104, 145372), (106, 145429), (107, 145477), (109, 145537), (110, 145546), (111, 145657),

Gene: Pivoine_254 Start: 145527, Stop: 148550, Start Num: 3

Candidate Starts for Pivoine_254:

(1, 145245), (Start: 3 @145527 has 111 MA's), (4, 145593), (5, 145635), (6, 145659), (7, 145677), (8, 145716), (10, 145788), (11, 145803), (13, 145860), (14, 145866), (15, 145893), (18, 145968), (19, 145980), (22, 146055), (23, 146058), (28, 146166), (32, 146277), (34, 146364), (35, 146394), (36, 146412), (38, 146436), (40, 146451), (49, 146742), (50, 146802), (52, 146850), (53, 146859), (55, 146931), (57, 147033), (59, 147078), (61, 147108), (62, 147171), (63, 147186), (71, 147345), (72, 147369), (73, 147426), (76, 147513), (79, 147621), (85, 147792), (86, 147804), (88, 147855), (91,

147912), (96, 148059), (100, 148182), (101, 148209), (102, 148212), (103, 148215), (104, 148218), (106, 148275), (107, 148323), (109, 148383), (110, 148392), (111, 148503),

Gene: QBert_245 Start: 143877, Stop: 146900, Start Num: 3

Candidate Starts for QBert_245:

(1, 143595), (Start: 3 @143877 has 111 MA's), (4, 143943), (5, 143985), (6, 144009), (7, 144027), (8, 144066), (10, 144138), (11, 144153), (13, 144210), (14, 144216), (15, 144243), (18, 144318), (19, 144330), (22, 144405), (23, 144408), (28, 144516), (30, 144600), (32, 144627), (34, 144714), (35, 144744), (36, 144762), (38, 144786), (40, 144801), (49, 145092), (50, 145152), (52, 145200), (53, 145209), (55, 145281), (57, 145383), (59, 145428), (61, 145458), (62, 145521), (63, 145536), (71, 145695), (72, 145719), (73, 145776), (76, 145863), (79, 145971), (80, 146031), (85, 146142), (86, 146154), (87, 146163), (88, 146205), (91, 146262), (93, 146394), (96, 146409), (100, 146532), (101, 146559), (102, 146562), (103, 146565), (104, 146568), (106, 146625), (107, 146673), (109, 146733), (110, 146742), (111, 146853),

Gene: Quasimodo_256 Start: 145863, Stop: 148886, Start Num: 3

Candidate Starts for Quasimodo_256:

(1, 145581), (Start: 3 @145863 has 111 MA's), (4, 145929), (5, 145971), (6, 145995), (7, 146013), (8, 146052), (10, 146124), (11, 146139), (13, 146196), (14, 146202), (15, 146229), (18, 146304), (19, 146316), (22, 146391), (23, 146394), (28, 146502), (32, 146613), (34, 146700), (35, 146730), (36, 146748), (38, 146772), (40, 146787), (49, 147078), (50, 147138), (52, 147186), (53, 147195), (55, 147267), (57, 147369), (59, 147414), (61, 147444), (62, 147507), (63, 147522), (71, 147681), (72, 147705), (73, 147762), (76, 147849), (79, 147957), (85, 148128), (86, 148140), (88, 148191), (91, 148248), (96, 148395), (100, 148518), (101, 148545), (102, 148548), (103, 148551), (104, 148554), (106, 148611), (107, 148659), (109, 148719), (110, 148728), (111, 148839),

Gene: Rabinovish_246 Start: 144367, Stop: 147390, Start Num: 3

Candidate Starts for Rabinovish_246:

(1, 144085), (Start: 3 @144367 has 111 MA's), (4, 144433), (5, 144475), (6, 144499), (7, 144517), (8, 144556), (10, 144628), (11, 144643), (13, 144700), (14, 144706), (15, 144733), (18, 144808), (19, 144820), (22, 144895), (23, 144898), (28, 145006), (32, 145117), (34, 145204), (35, 145234), (36, 145252), (38, 145276), (40, 145291), (49, 145582), (50, 145642), (52, 145690), (53, 145699), (54, 145723), (57, 145873), (59, 145918), (61, 145948), (62, 146011), (63, 146026), (71, 146185), (72, 146209), (73, 146266), (79, 146461), (80, 146521), (85, 146632), (86, 146644), (88, 146695), (91, 146752), (96, 146899), (100, 147022), (101, 147049), (102, 147052), (103, 147055), (104, 147058), (106, 147115), (107, 147163), (109, 147223), (110, 147232), (111, 147343),

Gene: Rahel_255 Start: 145965, Stop: 148988, Start Num: 3

Candidate Starts for Rahel_255:

(1, 145683), (Start: 3 @145965 has 111 MA's), (4, 146031), (5, 146073), (6, 146097), (7, 146115), (8, 146154), (10, 146226), (11, 146241), (13, 146298), (14, 146304), (15, 146331), (18, 146406), (19, 146418), (22, 146493), (23, 146496), (28, 146604), (30, 146688), (32, 146715), (34, 146802), (35, 146832), (36, 146850), (38, 146874), (40, 146889), (49, 147180), (50, 147240), (52, 147288), (53, 147297), (55, 147369), (57, 147471), (59, 147516), (61, 147546), (62, 147609), (63, 147624), (71, 147783), (72, 147807), (73, 147864), (76, 147951), (79, 148059), (80, 148119), (85, 148230), (86, 148242), (87, 148251), (88, 148293), (91, 148350), (93, 148482), (96, 148497), (100, 148620), (101, 148647), (102, 148650), (103, 148653), (104, 148656), (106, 148713), (107, 148761), (109, 148821), (110, 148830), (111, 148941),

Gene: Rizal_242 Start: 143780, Stop: 146803, Start Num: 3

Candidate Starts for Rizal_242:

(1, 143498), (Start: 3 @143780 has 111 MA's), (4, 143846), (5, 143888), (6, 143912), (7, 143930), (8, 143969), (10, 144041), (11, 144056), (13, 144113), (14, 144119), (15, 144146), (18, 144221), (19,

144233), (22, 144308), (23, 144311), (28, 144419), (30, 144503), (32, 144530), (34, 144617), (35, 144647), (36, 144665), (38, 144689), (40, 144704), (49, 144995), (50, 145055), (52, 145103), (53, 145112), (55, 145184), (57, 145286), (59, 145331), (61, 145361), (62, 145424), (63, 145439), (71, 145598), (72, 145622), (73, 145679), (76, 145766), (79, 145874), (80, 145934), (85, 146045), (86, 146057), (87, 146066), (88, 146108), (91, 146165), (93, 146297), (96, 146312), (100, 146435), (101, 146462), (102, 146465), (103, 146468), (104, 146471), (106, 146528), (107, 146576), (109, 146636), (110, 146645), (111, 146756),

Gene: RoMag_248 Start: 145561, Stop: 148584, Start Num: 3

Candidate Starts for RoMag_248:

(1, 145279), (Start: 3 @145561 has 111 MA's), (4, 145627), (5, 145669), (6, 145693), (7, 145711), (8, 145750), (10, 145822), (11, 145837), (13, 145894), (14, 145900), (15, 145927), (18, 146002), (19, 146014), (22, 146089), (23, 146092), (28, 146200), (30, 146284), (32, 146311), (34, 146398), (35, 146428), (36, 146446), (38, 146470), (40, 146485), (49, 146776), (50, 146836), (52, 146884), (53, 146893), (54, 146917), (57, 147067), (59, 147112), (61, 147142), (62, 147205), (63, 147220), (71, 147379), (72, 147403), (73, 147460), (76, 147547), (79, 147655), (80, 147715), (85, 147826), (86, 147838), (87, 147847), (88, 147889), (91, 147946), (93, 148078), (96, 148093), (100, 148216), (101, 148243), (102, 148246), (103, 148249), (104, 148252), (106, 148309), (107, 148357), (109, 148417), (110, 148426), (111, 148537),

Gene: Ronan_249 Start: 143942, Stop: 146965, Start Num: 3

Candidate Starts for Ronan_249:

(Start: 3 @143942 has 111 MA's), (4, 144008), (5, 144050), (6, 144074), (7, 144092), (8, 144131), (10, 144203), (11, 144218), (13, 144275), (14, 144281), (15, 144308), (18, 144383), (19, 144395), (22, 144470), (23, 144473), (28, 144581), (30, 144665), (32, 144692), (34, 144779), (35, 144809), (36, 144827), (38, 144851), (40, 144866), (49, 145157), (50, 145217), (52, 145265), (53, 145274), (54, 145298), (57, 145448), (59, 145493), (61, 145523), (62, 145586), (63, 145601), (71, 145760), (72, 145784), (73, 145841), (76, 145928), (79, 146036), (80, 146096), (85, 146207), (86, 146219), (87, 146228), (88, 146270), (91, 146327), (93, 146459), (96, 146474), (100, 146597), (101, 146624), (102, 146627), (103, 146630), (104, 146633), (106, 146690), (107, 146738), (109, 146798), (110, 146807), (111, 146918),

Gene: Sauce_250 Start: 145289, Stop: 148312, Start Num: 3

Candidate Starts for Sauce_250:

(1, 145007), (Start: 3 @145289 has 111 MA's), (4, 145355), (5, 145397), (6, 145421), (7, 145439), (8, 145478), (10, 145550), (11, 145565), (13, 145622), (14, 145628), (15, 145655), (18, 145730), (19, 145742), (22, 145817), (23, 145820), (28, 145928), (30, 146012), (32, 146039), (34, 146126), (35, 146156), (36, 146174), (38, 146198), (40, 146213), (49, 146504), (50, 146564), (52, 146612), (53, 146621), (55, 146693), (57, 146795), (59, 146840), (61, 146870), (62, 146933), (63, 146948), (71, 147107), (72, 147131), (73, 147188), (76, 147275), (79, 147383), (80, 147443), (85, 147554), (86, 147566), (87, 147575), (88, 147617), (91, 147674), (93, 147806), (96, 147821), (100, 147944), (101, 147971), (102, 147974), (103, 147977), (104, 147980), (106, 148037), (107, 148085), (109, 148145), (110, 148154), (111, 148265),

Gene: ScottMcG_245 Start: 144490, Stop: 147513, Start Num: 3

Candidate Starts for ScottMcG_245:

(1, 144208), (Start: 3 @144490 has 111 MA's), (4, 144556), (5, 144598), (6, 144622), (7, 144640), (8, 144679), (10, 144751), (11, 144766), (13, 144823), (14, 144829), (15, 144856), (18, 144931), (19, 144943), (22, 145018), (23, 145021), (28, 145129), (32, 145240), (34, 145327), (35, 145357), (36, 145375), (38, 145399), (40, 145414), (49, 145705), (50, 145765), (52, 145813), (53, 145822), (55, 145894), (57, 145996), (59, 146041), (61, 146071), (62, 146134), (63, 146149), (71, 146308), (72, 146332), (73, 146389), (76, 146476), (79, 146584), (80, 146644), (85, 146755), (86, 146767), (88, 146818), (91, 146875), (96, 147022), (100, 147145), (101, 147172), (102, 147175), (103, 147178),

(104, 147181), (106, 147238), (107, 147286), (109, 147346), (110, 147355), (111, 147466),

Gene: Settecandela_2 Start: 1651, Stop: 4911, Start Num: 2

Candidate Starts for Settecandela_2:

(Start: 2 @1651 has 2 MA's), (8, 1867), (9, 1930), (10, 1939), (12, 2005), (16, 2053), (17, 2116), (20, 2140), (21, 2203), (22, 2206), (24, 2245), (25, 2281), (26, 2299), (27, 2317), (28, 2332), (29, 2350), (31, 2422), (32, 2443), (33, 2446), (36, 2590), (39, 2617), (41, 2674), (42, 2698), (43, 2716), (44, 2770), (45, 2830), (46, 2851), (47, 2863), (48, 2890), (51, 3022), (56, 3283), (58, 3310), (59, 3349), (60, 3358), (64, 3517), (65, 3526), (66, 3559), (67, 3598), (68, 3616), (69, 3655), (70, 3661), (74, 3772), (75, 3835), (77, 3901), (78, 3955), (79, 3991), (81, 4102), (82, 4147), (83, 4171), (84, 4201), (87, 4234), (89, 4297), (90, 4300), (92, 4432), (94, 4492), (95, 4498), (97, 4552), (98, 4573), (99, 4588), (103, 4645), (104, 4648), (105, 4702), (108, 4807),

Gene: Shaqnato_244 Start: 144698, Stop: 147721, Start Num: 3

Candidate Starts for Shaqnato_244:

(1, 144416), (Start: 3 @144698 has 111 MA's), (4, 144764), (5, 144806), (6, 144830), (7, 144848), (8, 144887), (10, 144959), (11, 144974), (13, 145031), (14, 145037), (15, 145064), (18, 145139), (19, 145151), (22, 145226), (23, 145229), (28, 145337), (30, 145421), (32, 145448), (34, 145535), (35, 145565), (36, 145583), (38, 145607), (40, 145622), (49, 145913), (50, 145973), (52, 146021), (53, 146030), (55, 146102), (57, 146204), (59, 146249), (61, 146279), (62, 146342), (63, 146357), (71, 146516), (72, 146540), (73, 146597), (76, 146684), (79, 146792), (80, 146852), (85, 146963), (86, 146975), (87, 146984), (88, 147026), (91, 147083), (93, 147215), (96, 147230), (100, 147353), (101, 147380), (102, 147383), (103, 147386), (104, 147389), (106, 147446), (107, 147494), (109, 147554), (110, 147563), (111, 147674),

Gene: SilverDipper_258 Start: 146083, Stop: 149106, Start Num: 3

Candidate Starts for SilverDipper_258:

(1, 145801), (Start: 3 @146083 has 111 MA's), (4, 146149), (5, 146191), (6, 146215), (7, 146233), (8, 146272), (10, 146344), (11, 146359), (13, 146416), (14, 146422), (15, 146449), (18, 146524), (19, 146536), (22, 146611), (23, 146614), (28, 146722), (32, 146833), (34, 146920), (35, 146950), (36, 146968), (38, 146992), (40, 147007), (49, 147298), (50, 147358), (52, 147406), (53, 147415), (55, 147487), (57, 147589), (59, 147634), (61, 147664), (62, 147727), (63, 147742), (71, 147901), (72, 147925), (73, 147982), (76, 148069), (79, 148177), (85, 148348), (86, 148360), (88, 148411), (91, 148468), (96, 148615), (100, 148738), (101, 148765), (102, 148768), (103, 148771), (104, 148774), (106, 148831), (107, 148879), (109, 148939), (110, 148948), (111, 149059),

Gene: SmallFry_254 Start: 145441, Stop: 148464, Start Num: 3

Candidate Starts for SmallFry_254:

(1, 145159), (Start: 3 @145441 has 111 MA's), (4, 145507), (5, 145549), (6, 145573), (7, 145591), (8, 145630), (10, 145702), (11, 145717), (13, 145774), (14, 145780), (15, 145807), (18, 145882), (19, 145894), (22, 145969), (23, 145972), (28, 146080), (30, 146164), (32, 146191), (34, 146278), (35, 146308), (36, 146326), (38, 146350), (40, 146365), (49, 146656), (50, 146716), (52, 146764), (53, 146773), (55, 146845), (57, 146947), (59, 146992), (61, 147022), (62, 147085), (63, 147100), (71, 147259), (72, 147283), (73, 147340), (76, 147427), (79, 147535), (80, 147595), (85, 147706), (86, 147718), (87, 147727), (88, 147769), (91, 147826), (93, 147958), (96, 147973), (100, 148096), (101, 148123), (102, 148126), (103, 148129), (104, 148132), (106, 148189), (107, 148237), (109, 148297), (110, 148306), (111, 148417),

Gene: Spec_247 Start: 145453, Stop: 148476, Start Num: 3

Candidate Starts for Spec_247:

(1, 145171), (Start: 3 @145453 has 111 MA's), (4, 145519), (5, 145561), (6, 145585), (7, 145603), (8, 145642), (10, 145714), (11, 145729), (13, 145786), (14, 145792), (15, 145819), (18, 145894), (19, 145906), (22, 145981), (23, 145984), (28, 146092), (30, 146176), (32, 146203), (34, 146290), (35,

146320), (36, 146338), (38, 146362), (40, 146377), (49, 146668), (50, 146728), (52, 146776), (53, 146785), (55, 146857), (57, 146959), (59, 147004), (61, 147034), (62, 147097), (63, 147112), (71, 147271), (72, 147295), (73, 147352), (76, 147439), (79, 147547), (80, 147607), (85, 147718), (86, 147730), (87, 147739), (88, 147781), (91, 147838), (93, 147970), (96, 147985), (100, 148108), (101, 148135), (102, 148138), (103, 148141), (104, 148144), (106, 148201), (107, 148249), (109, 148309), (110, 148318), (111, 148429),

Gene: Specks_258 Start: 146381, Stop: 149404, Start Num: 3

Candidate Starts for Specks_258:

(1, 146099), (Start: 3 @146381 has 111 MA's), (4, 146447), (5, 146489), (6, 146513), (7, 146531), (8, 146570), (10, 146642), (11, 146657), (13, 146714), (14, 146720), (15, 146747), (18, 146822), (19, 146834), (22, 146909), (23, 146912), (28, 147020), (30, 147104), (32, 147131), (34, 147218), (35, 147248), (36, 147266), (38, 147290), (40, 147305), (49, 147596), (50, 147656), (52, 147704), (53, 147713), (54, 147737), (57, 147887), (59, 147932), (61, 147962), (62, 148025), (63, 148040), (71, 148199), (72, 148223), (73, 148280), (76, 148367), (79, 148475), (80, 148535), (85, 148646), (86, 148658), (87, 148667), (88, 148709), (91, 148766), (93, 148898), (96, 148913), (100, 149036), (101, 149063), (102, 149066), (103, 149069), (104, 149072), (106, 149129), (107, 149177), (109, 149237), (110, 149246), (111, 149357),

Gene: Sprinklers_251 Start: 145149, Stop: 148172, Start Num: 3

Candidate Starts for Sprinklers_251:

(1, 144867), (Start: 3 @145149 has 111 MA's), (4, 145215), (5, 145257), (6, 145281), (7, 145299), (8, 145338), (10, 145410), (11, 145425), (13, 145482), (14, 145488), (15, 145515), (18, 145590), (19, 145602), (22, 145677), (23, 145680), (28, 145788), (30, 145872), (32, 145899), (34, 145986), (35, 146016), (36, 146034), (38, 146058), (40, 146073), (49, 146364), (50, 146424), (52, 146472), (53, 146481), (55, 146553), (57, 146655), (59, 146700), (61, 146730), (62, 146793), (63, 146808), (71, 146967), (72, 146991), (73, 147048), (76, 147135), (79, 147243), (80, 147303), (85, 147414), (86, 147426), (87, 147435), (88, 147477), (91, 147534), (93, 147666), (96, 147681), (100, 147804), (101, 147831), (102, 147834), (103, 147837), (104, 147840), (106, 147897), (107, 147945), (109, 148005), (110, 148014), (111, 148125),

Gene: Spud_245 Start: 144898, Stop: 147921, Start Num: 3

Candidate Starts for Spud_245:

(1, 144616), (Start: 3 @144898 has 111 MA's), (4, 144964), (5, 145006), (6, 145030), (7, 145048), (8, 145087), (10, 145159), (11, 145174), (13, 145231), (14, 145237), (15, 145264), (18, 145339), (19, 145351), (22, 145426), (23, 145429), (28, 145537), (30, 145621), (32, 145648), (34, 145735), (35, 145765), (36, 145783), (38, 145807), (40, 145822), (49, 146113), (50, 146173), (52, 146221), (53, 146230), (55, 146302), (57, 146404), (59, 146449), (61, 146479), (62, 146542), (63, 146557), (71, 146716), (72, 146740), (73, 146797), (76, 146884), (79, 146992), (80, 147052), (85, 147163), (86, 147175), (87, 147184), (88, 147226), (91, 147283), (93, 147415), (96, 147430), (100, 147553), (101, 147580), (102, 147583), (103, 147586), (104, 147589), (106, 147646), (107, 147694), (109, 147754), (110, 147763), (111, 147874),

Gene: StephanieG_247 Start: 146084, Stop: 149107, Start Num: 3

Candidate Starts for StephanieG_247:

(1, 145802), (Start: 3 @146084 has 111 MA's), (4, 146150), (5, 146192), (6, 146216), (7, 146234), (8, 146273), (10, 146345), (11, 146360), (13, 146417), (14, 146423), (15, 146450), (18, 146525), (19, 146537), (22, 146612), (23, 146615), (28, 146723), (30, 146807), (32, 146834), (34, 146921), (35, 146951), (36, 146969), (38, 146993), (40, 147008), (49, 147299), (50, 147359), (52, 147407), (53, 147416), (54, 147440), (57, 147590), (59, 147635), (61, 147665), (62, 147728), (63, 147743), (71, 147902), (72, 147926), (73, 147983), (76, 148070), (79, 148178), (80, 148238), (85, 148349), (86, 148361), (87, 148370), (88, 148412), (91, 148469), (93, 148601), (96, 148616), (100, 148739), (101, 148766), (102, 148769), (103, 148772), (104, 148775), (106, 148832), (107, 148880), (109, 148940),

(110, 148949), (111, 149060),

Gene: Stubby_236 Start: 142869, Stop: 145892, Start Num: 3

Candidate Starts for Stubby_236:

(Start: 3 @142869 has 111 MA's), (4, 142935), (5, 142977), (6, 143001), (7, 143019), (8, 143058), (10, 143130), (11, 143145), (13, 143202), (14, 143208), (15, 143235), (18, 143310), (19, 143322), (22, 143397), (23, 143400), (28, 143508), (32, 143619), (34, 143706), (35, 143736), (36, 143754), (38, 143778), (40, 143793), (49, 144084), (50, 144144), (52, 144192), (53, 144201), (54, 144225), (57, 144375), (59, 144420), (61, 144450), (62, 144513), (63, 144528), (71, 144687), (72, 144711), (73, 144768), (76, 144855), (79, 144963), (80, 145023), (85, 145134), (86, 145146), (87, 145155), (88, 145197), (91, 145254), (96, 145401), (100, 145524), (101, 145551), (102, 145554), (103, 145557), (104, 145560), (106, 145617), (107, 145665), (109, 145725), (110, 145734), (111, 145845),

Gene: StubbySaigey_260 Start: 146066, Stop: 149089, Start Num: 3

Candidate Starts for StubbySaigey_260:

(1, 145784), (Start: 3 @146066 has 111 MA's), (4, 146132), (5, 146174), (6, 146198), (7, 146216), (8, 146255), (10, 146327), (11, 146342), (13, 146399), (14, 146405), (15, 146432), (18, 146507), (19, 146519), (22, 146594), (23, 146597), (28, 146705), (32, 146816), (34, 146903), (35, 146933), (36, 146951), (38, 146975), (40, 146990), (49, 147281), (50, 147341), (52, 147389), (53, 147398), (55, 147470), (57, 147572), (59, 147617), (61, 147647), (62, 147710), (63, 147725), (71, 147884), (72, 147908), (73, 147965), (76, 148052), (79, 148160), (80, 148220), (85, 148331), (86, 148343), (88, 148394), (91, 148451), (96, 148598), (100, 148721), (101, 148748), (102, 148751), (103, 148754), (104, 148757), (106, 148814), (107, 148862), (109, 148922), (110, 148931), (111, 149042),

Gene: Tainan_253 Start: 145004, Stop: 148027, Start Num: 3

Candidate Starts for Tainan_253:

(1, 144722), (Start: 3 @145004 has 111 MA's), (4, 145070), (5, 145112), (6, 145136), (7, 145154), (8, 145193), (10, 145265), (11, 145280), (13, 145337), (14, 145343), (15, 145370), (18, 145445), (19, 145457), (22, 145532), (23, 145535), (28, 145643), (30, 145727), (32, 145754), (34, 145841), (35, 145871), (36, 145889), (38, 145913), (40, 145928), (49, 146219), (50, 146279), (52, 146327), (53, 146336), (54, 146360), (57, 146510), (59, 146555), (61, 146585), (62, 146648), (63, 146663), (71, 146822), (72, 146846), (73, 146903), (76, 146990), (79, 147098), (80, 147158), (85, 147269), (86, 147281), (87, 147290), (88, 147332), (91, 147389), (93, 147521), (96, 147536), (100, 147659), (101, 147686), (102, 147689), (103, 147692), (104, 147695), (106, 147752), (107, 147800), (109, 147860), (110, 147869), (111, 147980),

Gene: Teardrop_252 Start: 145393, Stop: 148416, Start Num: 3

Candidate Starts for Teardrop_252:

(1, 145111), (Start: 3 @145393 has 111 MA's), (4, 145459), (5, 145501), (6, 145525), (7, 145543), (8, 145582), (10, 145654), (11, 145669), (13, 145726), (14, 145732), (15, 145759), (18, 145834), (19, 145846), (22, 145921), (23, 145924), (28, 146032), (30, 146116), (32, 146143), (34, 146230), (35, 146260), (36, 146278), (38, 146302), (40, 146317), (49, 146608), (50, 146668), (52, 146716), (53, 146725), (54, 146749), (57, 146899), (59, 146944), (61, 146974), (62, 147037), (63, 147052), (71, 147211), (72, 147235), (73, 147292), (76, 147379), (79, 147487), (80, 147547), (85, 147658), (86, 147670), (87, 147679), (88, 147721), (91, 147778), (94, 147916), (96, 147925), (100, 148048), (101, 148075), (102, 148078), (103, 148081), (104, 148084), (106, 148141), (107, 148189), (109, 148249), (110, 148258), (111, 148369),

Gene: Trinitium_250 Start: 144114, Stop: 147137, Start Num: 3

Candidate Starts for Trinitium_250:

(1, 143832), (Start: 3 @144114 has 111 MA's), (4, 144180), (5, 144222), (6, 144246), (7, 144264), (8, 144303), (10, 144375), (11, 144390), (13, 144447), (14, 144453), (15, 144480), (18, 144555), (19, 144567), (22, 144642), (23, 144645), (28, 144753), (32, 144864), (34, 144951), (35, 144981), (36,

144999), (38, 145023), (40, 145038), (49, 145329), (50, 145389), (52, 145437), (53, 145446), (55, 145518), (57, 145620), (59, 145665), (61, 145695), (62, 145758), (63, 145773), (71, 145932), (72, 145956), (73, 146013), (76, 146100), (79, 146208), (80, 146268), (85, 146379), (86, 146391), (88, 146442), (91, 146499), (96, 146646), (100, 146769), (101, 146796), (102, 146799), (103, 146802), (104, 146805), (106, 146862), (107, 146910), (109, 146970), (110, 146979), (111, 147090),

Gene: Turret_244 Start: 143247, Stop: 146270, Start Num: 3

Candidate Starts for Turret_244:

(1, 142965), (Start: 3 @143247 has 111 MA's), (4, 143313), (5, 143355), (6, 143379), (7, 143397), (8, 143436), (10, 143508), (11, 143523), (13, 143580), (14, 143586), (15, 143613), (18, 143688), (19, 143700), (22, 143775), (23, 143778), (28, 143886), (32, 143997), (34, 144084), (35, 144114), (36, 144132), (38, 144156), (40, 144171), (49, 144462), (50, 144522), (52, 144570), (53, 144579), (55, 144651), (57, 144753), (59, 144798), (61, 144828), (62, 144891), (63, 144906), (71, 145065), (72, 145089), (73, 145146), (76, 145233), (79, 145341), (80, 145401), (85, 145512), (86, 145524), (88, 145575), (91, 145632), (96, 145779), (100, 145902), (101, 145929), (102, 145932), (103, 145935), (104, 145938), (106, 145995), (107, 146043), (109, 146103), (110, 146112), (111, 146223),

Gene: ValleyTerrace_254 Start: 144824, Stop: 147847, Start Num: 3

Candidate Starts for ValleyTerrace_254:

(1, 144542), (Start: 3 @144824 has 111 MA's), (4, 144890), (5, 144932), (6, 144956), (7, 144974), (8, 145013), (10, 145085), (11, 145100), (13, 145157), (14, 145163), (15, 145190), (18, 145265), (19, 145277), (22, 145352), (23, 145355), (28, 145463), (32, 145574), (34, 145661), (35, 145691), (36, 145709), (38, 145733), (40, 145748), (49, 146039), (50, 146099), (52, 146147), (53, 146156), (55, 146228), (57, 146330), (59, 146375), (61, 146405), (62, 146468), (63, 146483), (71, 146642), (72, 146666), (73, 146723), (76, 146810), (79, 146918), (85, 147089), (86, 147101), (88, 147152), (91, 147209), (96, 147356), (100, 147479), (101, 147506), (102, 147509), (103, 147512), (104, 147515), (106, 147572), (107, 147620), (109, 147680), (110, 147689), (111, 147800),

Gene: Wally_251 Start: 144808, Stop: 147831, Start Num: 3

Candidate Starts for Wally_251:

(1, 144526), (Start: 3 @144808 has 111 MA's), (4, 144874), (5, 144916), (6, 144940), (7, 144958), (8, 144997), (10, 145069), (11, 145084), (13, 145141), (14, 145147), (15, 145174), (18, 145249), (19, 145261), (22, 145336), (23, 145339), (28, 145447), (30, 145531), (32, 145558), (34, 145645), (35, 145675), (36, 145693), (38, 145717), (40, 145732), (49, 146023), (50, 146083), (52, 146131), (53, 146140), (55, 146212), (57, 146314), (59, 146359), (61, 146389), (62, 146452), (63, 146467), (71, 146626), (72, 146650), (73, 146707), (76, 146794), (79, 146902), (80, 146962), (85, 147073), (86, 147085), (88, 147136), (91, 147193), (96, 147340), (100, 147463), (101, 147490), (102, 147493), (103, 147496), (104, 147499), (106, 147556), (107, 147604), (109, 147664), (110, 147673), (111, 147784),

Gene: Willis_254 Start: 145747, Stop: 148770, Start Num: 3

Candidate Starts for Willis_254:

(1, 145465), (Start: 3 @145747 has 111 MA's), (4, 145813), (5, 145855), (6, 145879), (7, 145897), (8, 145936), (10, 146008), (11, 146023), (13, 146080), (14, 146086), (15, 146113), (18, 146188), (19, 146200), (22, 146275), (23, 146278), (28, 146386), (32, 146497), (34, 146584), (35, 146614), (36, 146632), (38, 146656), (40, 146671), (49, 146962), (50, 147022), (52, 147070), (53, 147079), (55, 147151), (57, 147253), (59, 147298), (61, 147328), (62, 147391), (63, 147406), (71, 147565), (72, 147589), (73, 147646), (76, 147733), (79, 147841), (85, 148012), (86, 148024), (88, 148075), (91, 148132), (96, 148279), (100, 148402), (101, 148429), (102, 148432), (103, 148435), (104, 148438), (106, 148495), (107, 148543), (109, 148603), (110, 148612), (111, 148723),

Gene: Yassified_249 Start: 144943, Stop: 147966, Start Num: 3

Candidate Starts for Yassified_249:

(Start: 3 @144943 has 111 MA's), (4, 145009), (5, 145051), (6, 145075), (7, 145093), (8, 145132), (10, 145204), (11, 145219), (13, 145276), (14, 145282), (15, 145309), (18, 145384), (19, 145396), (22, 145471), (23, 145474), (28, 145582), (30, 145666), (32, 145693), (34, 145780), (35, 145810), (36, 145828), (38, 145852), (40, 145867), (49, 146158), (50, 146218), (52, 146266), (53, 146275), (54, 146299), (57, 146449), (59, 146494), (61, 146524), (62, 146587), (63, 146602), (71, 146761), (72, 146785), (73, 146842), (76, 146929), (79, 147037), (80, 147097), (85, 147208), (86, 147220), (87, 147229), (88, 147271), (91, 147328), (93, 147460), (96, 147475), (100, 147598), (101, 147625), (102, 147628), (103, 147631), (104, 147634), (106, 147691), (107, 147739), (109, 147799), (110, 147808), (111, 147919),

Gene: YoungMoneyMata_253 Start: 145939, Stop: 148962, Start Num: 3

Candidate Starts for YoungMoneyMata_253:

(1, 145657), (Start: 3 @145939 has 111 MA's), (4, 146005), (5, 146047), (6, 146071), (7, 146089), (8, 146128), (10, 146200), (11, 146215), (13, 146272), (14, 146278), (15, 146305), (18, 146380), (19, 146392), (22, 146467), (23, 146470), (28, 146578), (32, 146689), (34, 146776), (35, 146806), (36, 146824), (38, 146848), (40, 146863), (49, 147154), (50, 147214), (52, 147262), (53, 147271), (55, 147343), (57, 147445), (59, 147490), (61, 147520), (62, 147583), (63, 147598), (71, 147757), (72, 147781), (73, 147838), (76, 147925), (79, 148033), (85, 148204), (86, 148216), (88, 148267), (91, 148324), (96, 148471), (100, 148594), (101, 148621), (102, 148624), (103, 148627), (104, 148630), (106, 148687), (107, 148735), (109, 148795), (110, 148804), (111, 148915),

Gene: ZygoTaiga_250 Start: 147216, Stop: 150239, Start Num: 3

Candidate Starts for ZygoTaiga_250:

(1, 146934), (Start: 3 @147216 has 111 MA's), (4, 147282), (5, 147324), (6, 147348), (7, 147366), (8, 147405), (10, 147477), (11, 147492), (13, 147549), (14, 147555), (15, 147582), (18, 147657), (19, 147669), (22, 147744), (23, 147747), (28, 147855), (30, 147939), (32, 147966), (34, 148053), (35, 148083), (36, 148101), (38, 148125), (40, 148140), (49, 148431), (50, 148491), (52, 148539), (53, 148548), (54, 148572), (57, 148722), (59, 148767), (61, 148797), (62, 148860), (63, 148875), (71, 149034), (72, 149058), (73, 149115), (76, 149202), (79, 149310), (80, 149370), (85, 149481), (86, 149493), (87, 149502), (88, 149544), (91, 149601), (93, 149733), (96, 149748), (100, 149871), (101, 149898), (102, 149901), (103, 149904), (104, 149907), (106, 149964), (107, 150012), (109, 150072), (110, 150081), (111, 150192),