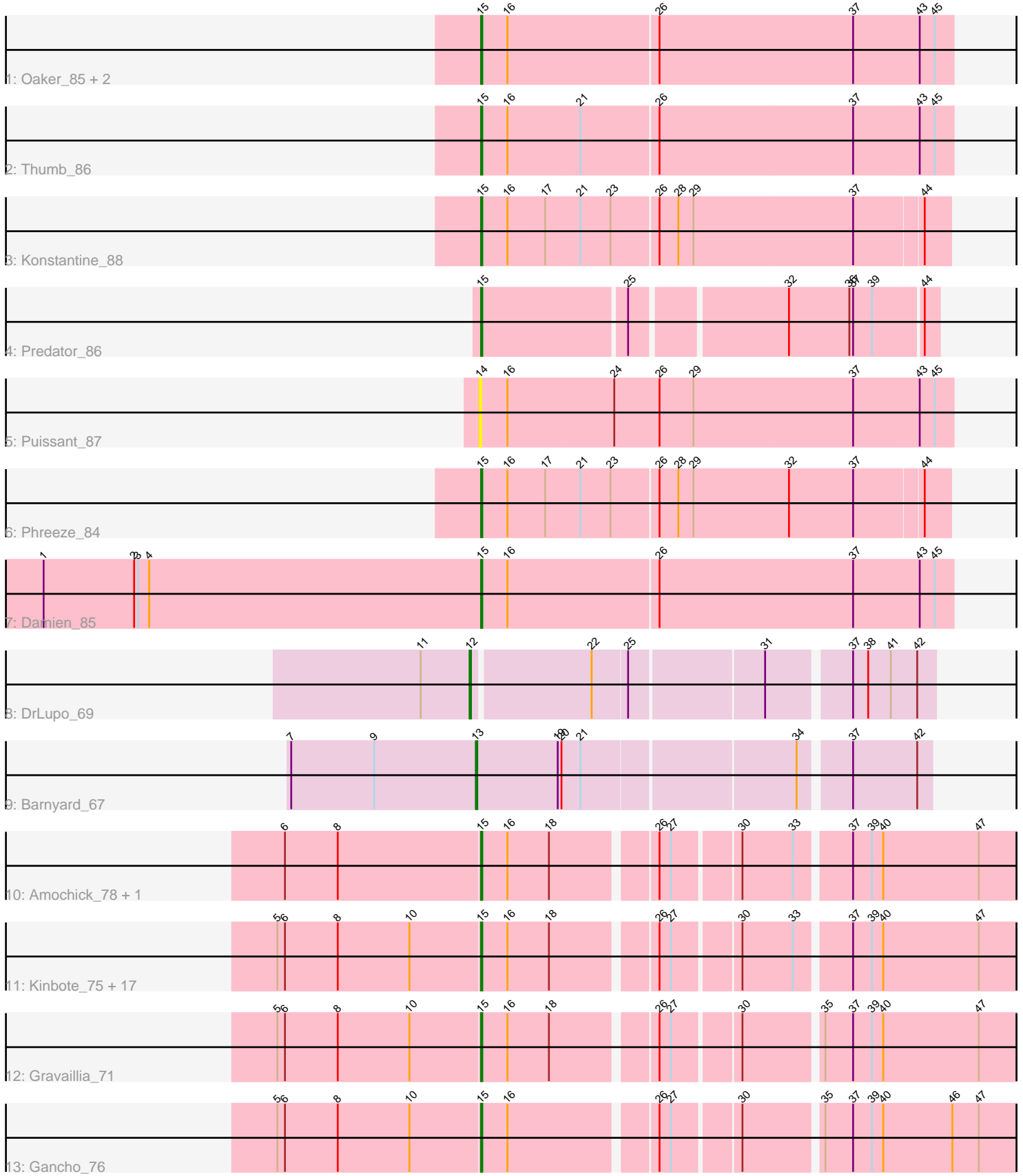


Pham 189963



Note: Tracks are now grouped by subcluster and scaled. Switching in subcluster is indicated by changes in track color. Track scale is now set by default to display the region 30 bp upstream of start 1 to 30 bp downstream of the last possible start. If this default region is judged to be packed too tightly with annotated starts, the track will be further scaled to only show that region of the ORF with annotated starts. This action will be indicated by adding "Zoomed" to the title. For starts, yellow indicates the location of called starts comprised solely of Glimmer/GeneMark auto-annotations, green indicates the location of called starts with at least 1 manual gene annotation.

Pham 189963 Report

This analysis was run 11/02/24 on database version 579.

Pham number 189963 has 33 members, 1 are drafts.

Phages represented in each track:

- Track 1 : Oaker_85, Megatron06_86, Beckerton_84
- Track 2 : Thumb_86
- Track 3 : Konstantine_88
- Track 4 : Predator_86
- Track 5 : Puissant_87
- Track 6 : Phreeze_84
- Track 7 : Damien_85
- Track 8 : DrLupo_69
- Track 9 : Barnyard_67
- Track 10 : Amochick_78, Daegal_79
- Track 11 : Kinbote_75, Luna22_70, Hail_70, Hadrien_74, Evanesce_76, Ubuntu_77, LilHazelnut_77, Webster2_77, Giles_70, Amymech_77, Ein37_77, Forge_70, OBUpride_76, DeepSoil15_77, HH92_76, Wishmaker_70, Luke_74, Dewey_70
- Track 12 : Gravaillia_71
- Track 13 : Gancho_76

Summary of Final Annotations (See graph section above for start numbers):

The start number called the most often in the published annotations is 15, it was called in 30 of the 32 non-draft genes in the pham.

Genes that call this "Most Annotated" start:

- Amochick_78, Amymech_77, Beckerton_84, Daegal_79, Damien_85, DeepSoil15_77, Dewey_70, Ein37_77, Evanesce_76, Forge_70, Gancho_76, Giles_70, Gravaillia_71, HH92_76, Hadrien_74, Hail_70, Kinbote_75, Konstantine_88, LilHazelnut_77, Luke_74, Luna22_70, Megatron06_86, OBUpride_76, Oaker_85, Phreeze_84, Predator_86, Thumb_86, Ubuntu_77, Webster2_77, Wishmaker_70,

Genes that have the "Most Annotated" start but do not call it:

-

Genes that do not have the "Most Annotated" start:

- Barnyard_67, DrLupo_69, Puissant_87,

Summary by start number:

Start 12:

- Found in 1 of 33 (3.0%) of genes in pham
- Manual Annotations of this start: 1 of 32
- Called 100.0% of time when present
- Phage (with cluster) where this start called: DrLupo_69 (H2),

Start 13:

- Found in 1 of 33 (3.0%) of genes in pham
- Manual Annotations of this start: 1 of 32
- Called 100.0% of time when present
- Phage (with cluster) where this start called: Barnyard_67 (H2),

Start 14:

- Found in 1 of 33 (3.0%) of genes in pham
- No Manual Annotations of this start.
- Called 100.0% of time when present
- Phage (with cluster) where this start called: Puissant_87 (H1),

Start 15:

- Found in 30 of 33 (90.9%) of genes in pham
- Manual Annotations of this start: 30 of 32
- Called 100.0% of time when present
- Phage (with cluster) where this start called: Amochick_78 (Q), Amymech_77 (Q), Beckerton_84 (H1), Daegal_79 (Q), Damien_85 (H1), DeepSoil15_77 (Q), Dewey_70 (Q), Ein37_77 (Q), Evanesce_76 (Q), Forge_70 (Q), Gancho_76 (Q), Giles_70 (Q), Gravallia_71 (Q), HH92_76 (Q), Hadrien_74 (Q), Hail_70 (Q), Kinbote_75 (Q), Konstantine_88 (H1), LilHazelNut_77 (Q), Luke_74 (Q), Luna22_70 (Q), Megatron06_86 (H1), OBUpride_76 (Q), Oaker_85 (H1), Phreeze_84 (H1), Predator_86 (H1), Thumb_86 (H1), Ubuntu_77 (Q), Webster2_77 (Q), Wishmaker_70 (Q),

Summary by clusters:

There are 3 clusters represented in this pham: Q, H2, H1,

Info for manual annotations of cluster H1:

- Start number 15 was manually annotated 8 times for cluster H1.

Info for manual annotations of cluster H2:

- Start number 12 was manually annotated 1 time for cluster H2.
- Start number 13 was manually annotated 1 time for cluster H2.

Info for manual annotations of cluster Q:

- Start number 15 was manually annotated 22 times for cluster Q.

Gene Information:

Gene: Amochick_78 Start: 50070, Stop: 50483, Start Num: 15

Candidate Starts for Amochick_78:

(6, 49917), (8, 49959), (Start: 15 @50070 has 30 MA's), (16, 50091), (18, 50124), (26, 50199), (27, 50208), (30, 50256), (33, 50295), (37, 50334), (39, 50349), (40, 50358), (47, 50433),

Gene: Amymech_77 Start: 49523, Stop: 49936, Start Num: 15

Candidate Starts for Amymech_77:

(5, 49364), (6, 49370), (8, 49412), (10, 49469), (Start: 15 @49523 has 30 MA's), (16, 49544), (18, 49577), (26, 49652), (27, 49661), (30, 49709), (33, 49748), (37, 49787), (39, 49802), (40, 49811), (47, 49886),

Gene: Barnyard_67 Start: 47457, Stop: 47798, Start Num: 13

Candidate Starts for Barnyard_67:

(7, 47310), (9, 47376), (Start: 13 @47457 has 1 MA's), (19, 47520), (20, 47523), (21, 47538), (34, 47700), (37, 47736), (42, 47787),

Gene: Beckerton_84 Start: 62501, Stop: 62869, Start Num: 15

Candidate Starts for Beckerton_84:

(Start: 15 @62501 has 30 MA's), (16, 62522), (26, 62639), (37, 62792), (43, 62843), (45, 62855),

Gene: Daegal_79 Start: 50629, Stop: 51042, Start Num: 15

Candidate Starts for Daegal_79:

(6, 50476), (8, 50518), (Start: 15 @50629 has 30 MA's), (16, 50650), (18, 50683), (26, 50758), (27, 50767), (30, 50815), (33, 50854), (37, 50893), (39, 50908), (40, 50917), (47, 50992),

Gene: Damien_85 Start: 61997, Stop: 62365, Start Num: 15

Candidate Starts for Damien_85:

(1, 61649), (2, 61721), (3, 61724), (4, 61733), (Start: 15 @61997 has 30 MA's), (16, 62018), (26, 62135), (37, 62288), (43, 62339), (45, 62351),

Gene: DeepSoil15_77 Start: 49523, Stop: 49936, Start Num: 15

Candidate Starts for DeepSoil15_77:

(5, 49364), (6, 49370), (8, 49412), (10, 49469), (Start: 15 @49523 has 30 MA's), (16, 49544), (18, 49577), (26, 49652), (27, 49661), (30, 49709), (33, 49748), (37, 49787), (39, 49802), (40, 49811), (47, 49886),

Gene: Dewey_70 Start: 49523, Stop: 49936, Start Num: 15

Candidate Starts for Dewey_70:

(5, 49364), (6, 49370), (8, 49412), (10, 49469), (Start: 15 @49523 has 30 MA's), (16, 49544), (18, 49577), (26, 49652), (27, 49661), (30, 49709), (33, 49748), (37, 49787), (39, 49802), (40, 49811), (47, 49886),

Gene: DrLupo_69 Start: 48593, Stop: 48937, Start Num: 12

Candidate Starts for DrLupo_69:

(11, 48554), (Start: 12 @48593 has 1 MA's), (22, 48683), (25, 48710), (31, 48812), (37, 48872), (38, 48884), (41, 48902), (42, 48923),

Gene: Ein37_77 Start: 49523, Stop: 49936, Start Num: 15

Candidate Starts for Ein37_77:

(5, 49364), (6, 49370), (8, 49412), (10, 49469), (Start: 15 @49523 has 30 MA's), (16, 49544), (18, 49577), (26, 49652), (27, 49661), (30, 49709), (33, 49748), (37, 49787), (39, 49802), (40, 49811), (47, 49886),

Gene: Evanesce_76 Start: 49523, Stop: 49936, Start Num: 15

Candidate Starts for Evanesce_76:

(5, 49364), (6, 49370), (8, 49412), (10, 49469), (Start: 15 @49523 has 30 MA's), (16, 49544), (18, 49577), (26, 49652), (27, 49661), (30, 49709), (33, 49748), (37, 49787), (39, 49802), (40, 49811), (47, 49886),

Gene: Forge_70 Start: 49523, Stop: 49936, Start Num: 15

Candidate Starts for Forge_70:

(5, 49364), (6, 49370), (8, 49412), (10, 49469), (Start: 15 @49523 has 30 MA's), (16, 49544), (18, 49577), (26, 49652), (27, 49661), (30, 49709), (33, 49748), (37, 49787), (39, 49802), (40, 49811), (47, 49886),

Gene: Gancho_76 Start: 49298, Stop: 49711, Start Num: 15

Candidate Starts for Gancho_76:

(5, 49139), (6, 49145), (8, 49187), (10, 49244), (Start: 15 @49298 has 30 MA's), (16, 49319), (26, 49427), (27, 49436), (30, 49484), (35, 49541), (37, 49562), (39, 49577), (40, 49586), (46, 49640), (47, 49661),

Gene: Giles_70 Start: 49523, Stop: 49936, Start Num: 15

Candidate Starts for Giles_70:

(5, 49364), (6, 49370), (8, 49412), (10, 49469), (Start: 15 @49523 has 30 MA's), (16, 49544), (18, 49577), (26, 49652), (27, 49661), (30, 49709), (33, 49748), (37, 49787), (39, 49802), (40, 49811), (47, 49886),

Gene: Gravaillia_71 Start: 49579, Stop: 49992, Start Num: 15

Candidate Starts for Gravaillia_71:

(5, 49420), (6, 49426), (8, 49468), (10, 49525), (Start: 15 @49579 has 30 MA's), (16, 49600), (18, 49633), (26, 49708), (27, 49717), (30, 49765), (35, 49822), (37, 49843), (39, 49858), (40, 49867), (47, 49942),

Gene: HH92_76 Start: 49523, Stop: 49936, Start Num: 15

Candidate Starts for HH92_76:

(5, 49364), (6, 49370), (8, 49412), (10, 49469), (Start: 15 @49523 has 30 MA's), (16, 49544), (18, 49577), (26, 49652), (27, 49661), (30, 49709), (33, 49748), (37, 49787), (39, 49802), (40, 49811), (47, 49886),

Gene: Hadrien_74 Start: 49523, Stop: 49936, Start Num: 15

Candidate Starts for Hadrien_74:

(5, 49364), (6, 49370), (8, 49412), (10, 49469), (Start: 15 @49523 has 30 MA's), (16, 49544), (18, 49577), (26, 49652), (27, 49661), (30, 49709), (33, 49748), (37, 49787), (39, 49802), (40, 49811), (47, 49886),

Gene: Hail_70 Start: 49523, Stop: 49936, Start Num: 15

Candidate Starts for Hail_70:

(5, 49364), (6, 49370), (8, 49412), (10, 49469), (Start: 15 @49523 has 30 MA's), (16, 49544), (18, 49577), (26, 49652), (27, 49661), (30, 49709), (33, 49748), (37, 49787), (39, 49802), (40, 49811), (47, 49886),

Gene: Kinbote_75 Start: 49523, Stop: 49936, Start Num: 15

Candidate Starts for Kinbote_75:

(5, 49364), (6, 49370), (8, 49412), (10, 49469), (Start: 15 @49523 has 30 MA's), (16, 49544), (18, 49577), (26, 49652), (27, 49661), (30, 49709), (33, 49748), (37, 49787), (39, 49802), (40, 49811), (47, 49886),

Gene: Konstantine_88 Start: 62501, Stop: 62863, Start Num: 15

Candidate Starts for Konstantine_88:

(Start: 15 @62501 has 30 MA's), (16, 62522), (17, 62552), (21, 62579), (23, 62603), (26, 62639), (28, 62654), (29, 62666), (37, 62792), (44, 62843),

Gene: LilHazelnut_77 Start: 49523, Stop: 49936, Start Num: 15

Candidate Starts for LilHazelnut_77:

(5, 49364), (6, 49370), (8, 49412), (10, 49469), (Start: 15 @49523 has 30 MA's), (16, 49544), (18, 49577), (26, 49652), (27, 49661), (30, 49709), (33, 49748), (37, 49787), (39, 49802), (40, 49811), (47, 49886),

Gene: Luke_74 Start: 49478, Stop: 49891, Start Num: 15

Candidate Starts for Luke_74:

(5, 49319), (6, 49325), (8, 49367), (10, 49424), (Start: 15 @49478 has 30 MA's), (16, 49499), (18, 49532), (26, 49607), (27, 49616), (30, 49664), (33, 49703), (37, 49742), (39, 49757), (40, 49766), (47, 49841),

Gene: Luna22_70 Start: 49507, Stop: 49920, Start Num: 15

Candidate Starts for Luna22_70:

(5, 49348), (6, 49354), (8, 49396), (10, 49453), (Start: 15 @49507 has 30 MA's), (16, 49528), (18, 49561), (26, 49636), (27, 49645), (30, 49693), (33, 49732), (37, 49771), (39, 49786), (40, 49795), (47, 49870),

Gene: Megatron06_86 Start: 62582, Stop: 62950, Start Num: 15

Candidate Starts for Megatron06_86:

(Start: 15 @62582 has 30 MA's), (16, 62603), (26, 62720), (37, 62873), (43, 62924), (45, 62936),

Gene: OBUpride_76 Start: 49567, Stop: 49980, Start Num: 15

Candidate Starts for OBUpride_76:

(5, 49408), (6, 49414), (8, 49456), (10, 49513), (Start: 15 @49567 has 30 MA's), (16, 49588), (18, 49621), (26, 49696), (27, 49705), (30, 49753), (33, 49792), (37, 49831), (39, 49846), (40, 49855), (47, 49930),

Gene: Oaker_85 Start: 62599, Stop: 62967, Start Num: 15

Candidate Starts for Oaker_85:

(Start: 15 @62599 has 30 MA's), (16, 62620), (26, 62737), (37, 62890), (43, 62941), (45, 62953),

Gene: Phreeze_84 Start: 61531, Stop: 61893, Start Num: 15

Candidate Starts for Phreeze_84:

(Start: 15 @61531 has 30 MA's), (16, 61552), (17, 61582), (21, 61609), (23, 61633), (26, 61669), (28, 61684), (29, 61696), (32, 61771), (37, 61822), (44, 61873),

Gene: Predator_86 Start: 63141, Stop: 63479, Start Num: 15

Candidate Starts for Predator_86:

(Start: 15 @63141 has 30 MA's), (25, 63252), (32, 63366), (36, 63414), (37, 63417), (39, 63432), (44, 63468),

Gene: Puissant_87 Start: 62176, Stop: 62547, Start Num: 14

Candidate Starts for Puissant_87:

(14, 62176), (16, 62197), (24, 62281), (26, 62317), (29, 62344), (37, 62470), (43, 62521), (45, 62533),

Gene: Thumb_86 Start: 61951, Stop: 62319, Start Num: 15

Candidate Starts for Thumb_86:

(Start: 15 @61951 has 30 MA's), (16, 61972), (21, 62029), (26, 62089), (37, 62242), (43, 62293), (45, 62305),

Gene: Ubuntu_77 Start: 49523, Stop: 49936, Start Num: 15

Candidate Starts for Ubuntu_77:

(5, 49364), (6, 49370), (8, 49412), (10, 49469), (Start: 15 @49523 has 30 MA's), (16, 49544), (18, 49577), (26, 49652), (27, 49661), (30, 49709), (33, 49748), (37, 49787), (39, 49802), (40, 49811), (47, 49886),

Gene: Webster2_77 Start: 49523, Stop: 49936, Start Num: 15

Candidate Starts for Webster2_77:

(5, 49364), (6, 49370), (8, 49412), (10, 49469), (Start: 15 @49523 has 30 MA's), (16, 49544), (18, 49577), (26, 49652), (27, 49661), (30, 49709), (33, 49748), (37, 49787), (39, 49802), (40, 49811), (47, 49886),

Gene: Wishmaker_70 Start: 49523, Stop: 49936, Start Num: 15

Candidate Starts for Wishmaker_70:

(5, 49364), (6, 49370), (8, 49412), (10, 49469), (Start: 15 @49523 has 30 MA's), (16, 49544), (18, 49577), (26, 49652), (27, 49661), (30, 49709), (33, 49748), (37, 49787), (39, 49802), (40, 49811), (47, 49886),