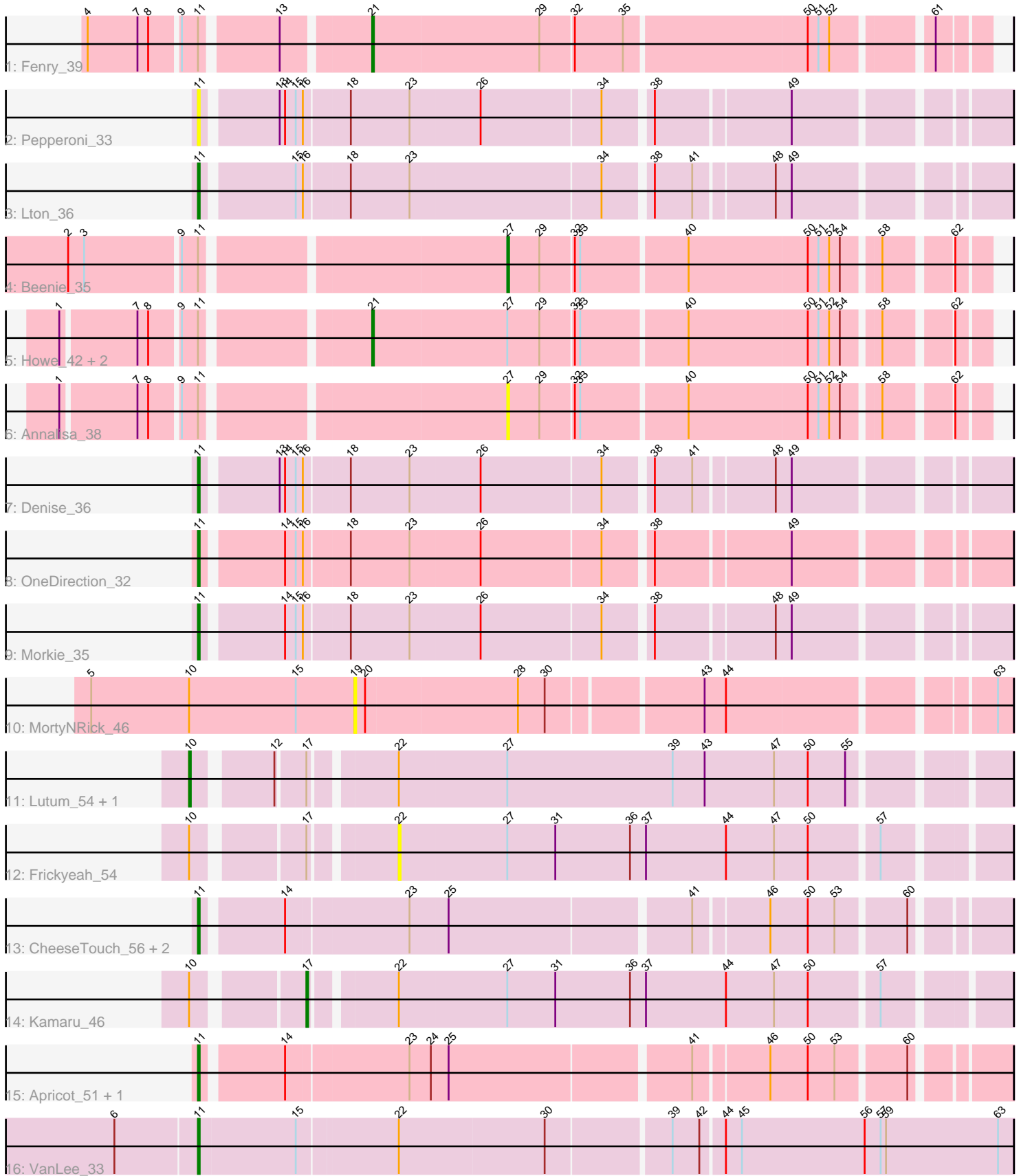


Pham 190090



Note: Tracks are now grouped by subcluster and scaled. Switching in subcluster is indicated by changes in track color. Track scale is now set by default to display the region 30 bp upstream of start 1 to 30 bp downstream of the last possible start. If this default region is judged to be packed too tightly with annotated starts, the track will be further scaled to only show that region of the ORF with annotated starts. This action will be indicated by adding "Zoomed" to the title. For starts, yellow indicates the location of called starts comprised solely of Glimmer/GeneMark auto-annotations, green indicates the location of called starts with at least 1 manual gene annotation.

Pham 190090 Report

This analysis was run 11/02/24 on database version 579.

Pham number 190090 has 22 members, 4 are drafts.

Phages represented in each track:

- Track 1 : Fenry_39
- Track 2 : Pepperoni_33
- Track 3 : Lton_36
- Track 4 : Beenie_35
- Track 5 : Howe_42, Twinkle_41, Hortense_42
- Track 6 : Annalisa_38
- Track 7 : Denise_36
- Track 8 : OneDirection_32
- Track 9 : Morkie_35
- Track 10 : MortyNRick_46
- Track 11 : Lutum_54, Kenna_53
- Track 12 : Frickyeah_54
- Track 13 : CheeseTouch_56, Crater_51, Phistory_53
- Track 14 : Kamaru_46
- Track 15 : Apricot_51, PhorbesPhlower_35
- Track 16 : VanLee_33

Summary of Final Annotations (See graph section above for start numbers):

The start number called the most often in the published annotations is 11, it was called in 10 of the 18 non-draft genes in the pham.

Genes that call this "Most Annotated" start:

- Apricot_51, CheeseTouch_56, Crater_51, Denise_36, Lton_36, Morkie_35, OneDirection_32, Pepperoni_33, Phistory_53, PhorbesPhlower_35, VanLee_33,

Genes that have the "Most Annotated" start but do not call it:

- Annalisa_38, Beenie_35, Fenry_39, Hortense_42, Howe_42, Twinkle_41,

Genes that do not have the "Most Annotated" start:

- Frickyeah_54, Kamaru_46, Kenna_53, Lutum_54, MortyNRick_46,

Summary by start number:

Start 10:

- Found in 5 of 22 (22.7%) of genes in pham
- Manual Annotations of this start: 2 of 18
- Called 40.0% of time when present
- Phage (with cluster) where this start called: Kenna_53 (DN1), Lutum_54 (DN1),

Start 11:

- Found in 17 of 22 (77.3%) of genes in pham
- Manual Annotations of this start: 10 of 18
- Called 64.7% of time when present
- Phage (with cluster) where this start called: Apricot_51 (DN3), CheeseTouch_56 (DN1), Crater_51 (DN3), Denise_36 (CZ5), Lton_36 (CZ), Morkie_35 (DH), OneDirection_32 (CZ6), Pepperoni_33 (CZ), Phistory_53 (DN1), PhorbesPhlower_35 (DH), VanLee_33 (singleton),

Start 17:

- Found in 4 of 22 (18.2%) of genes in pham
- Manual Annotations of this start: 1 of 18
- Called 25.0% of time when present
- Phage (with cluster) where this start called: Kamaru_46 (DN1),

Start 19:

- Found in 1 of 22 (4.5%) of genes in pham
- No Manual Annotations of this start.
- Called 100.0% of time when present
- Phage (with cluster) where this start called: MortyNRick_46 (DN),

Start 21:

- Found in 4 of 22 (18.2%) of genes in pham
- Manual Annotations of this start: 4 of 18
- Called 100.0% of time when present
- Phage (with cluster) where this start called: Fenry_39 (CV), Hortense_42 (CZ4), Howe_42 (CZ4), Twinkle_41 (CZ4),

Start 22:

- Found in 5 of 22 (22.7%) of genes in pham
- No Manual Annotations of this start.
- Called 20.0% of time when present
- Phage (with cluster) where this start called: Frickyeah_54 (DN1),

Start 27:

- Found in 9 of 22 (40.9%) of genes in pham
- Manual Annotations of this start: 1 of 18
- Called 22.2% of time when present
- Phage (with cluster) where this start called: Annalisa_38 (CZ4), Beenie_35 (CZ4),

Summary by clusters:

There are 10 clusters represented in this pham: DN, singleton, DH, CZ6, CZ4, CZ5, CZ, DN1, DN3, CV,

Info for manual annotations of cluster CV:

- Start number 21 was manually annotated 1 time for cluster CV.

Info for manual annotations of cluster CZ:

- Start number 11 was manually annotated 1 time for cluster CZ.

Info for manual annotations of cluster CZ4:

- Start number 21 was manually annotated 3 times for cluster CZ4.
- Start number 27 was manually annotated 1 time for cluster CZ4.

Info for manual annotations of cluster CZ5:

- Start number 11 was manually annotated 1 time for cluster CZ5.

Info for manual annotations of cluster CZ6:

- Start number 11 was manually annotated 1 time for cluster CZ6.

Info for manual annotations of cluster DH:

- Start number 11 was manually annotated 2 times for cluster DH.

Info for manual annotations of cluster DN1:

- Start number 10 was manually annotated 2 times for cluster DN1.
- Start number 11 was manually annotated 2 times for cluster DN1.
- Start number 17 was manually annotated 1 time for cluster DN1.

Info for manual annotations of cluster DN3:

- Start number 11 was manually annotated 2 times for cluster DN3.

Gene Information:

Gene: Annalisa_38 Start: 30127, Stop: 29879, Start Num: 27

Candidate Starts for Annalisa_38:

(1, 30355), (7, 30316), (8, 30310), (9, 30295), (Start: 11 @30286 has 10 MA's), (Start: 27 @30127 has 1 MA's), (29, 30109), (32, 30091), (33, 30088), (40, 30031), (50, 29965), (51, 29959), (52, 29953), (54, 29947), (58, 29929), (62, 29896),

Gene: Apricot_51 Start: 33861, Stop: 33445, Start Num: 11

Candidate Starts for Apricot_51:

(Start: 11 @33861 has 10 MA's), (14, 33819), (23, 33753), (24, 33741), (25, 33732), (41, 33603), (46, 33564), (50, 33543), (53, 33528), (60, 33492),

Gene: Beenie_35 Start: 30755, Stop: 30507, Start Num: 27

Candidate Starts for Beenie_35:

(2, 30983), (3, 30974), (9, 30923), (Start: 11 @30914 has 10 MA's), (Start: 27 @30755 has 1 MA's), (29, 30737), (32, 30719), (33, 30716), (40, 30659), (50, 30593), (51, 30587), (52, 30581), (54, 30575), (58, 30557), (62, 30524),

Gene: CheeseTouch_56 Start: 32599, Stop: 32183, Start Num: 11

Candidate Starts for CheeseTouch_56:

(Start: 11 @32599 has 10 MA's), (14, 32557), (23, 32491), (25, 32470), (41, 32341), (46, 32302), (50, 32281), (53, 32266), (60, 32230),

Gene: Crater_51 Start: 34256, Stop: 33840, Start Num: 11

Candidate Starts for Crater_51:

(Start: 11 @34256 has 10 MA's), (14, 34214), (23, 34148), (25, 34127), (41, 33998), (46, 33959), (50, 33938), (53, 33923), (60, 33887),

Gene: Denise_36 Start: 28917, Stop: 28501, Start Num: 11

Candidate Starts for Denise_36:

(Start: 11 @28917 has 10 MA's), (13, 28878), (14, 28875), (15, 28869), (16, 28866), (18, 28842), (23, 28809), (26, 28770), (34, 28704), (38, 28680), (41, 28659), (48, 28617), (49, 28608),

Gene: Fenry_39 Start: 32680, Stop: 32357, Start Num: 21

Candidate Starts for Fenry_39:

(4, 32821), (7, 32794), (8, 32788), (9, 32773), (Start: 11 @32764 has 10 MA's), (13, 32725), (Start: 21 @32680 has 4 MA's), (29, 32587), (32, 32569), (35, 32542), (50, 32443), (51, 32437), (52, 32431), (61, 32383),

Gene: Frickyeah_54 Start: 33610, Stop: 33284, Start Num: 22

Candidate Starts for Frickyeah_54:

(Start: 10 @33706 has 2 MA's), (Start: 17 @33652 has 1 MA's), (22, 33610), (Start: 27 @33550 has 1 MA's), (31, 33523), (36, 33481), (37, 33472), (44, 33427), (47, 33400), (50, 33382), (57, 33346),

Gene: Hortense_42 Start: 34200, Stop: 33877, Start Num: 21

Candidate Starts for Hortense_42:

(1, 34353), (7, 34314), (8, 34308), (9, 34293), (Start: 11 @34284 has 10 MA's), (Start: 21 @34200 has 4 MA's), (Start: 27 @34125 has 1 MA's), (29, 34107), (32, 34089), (33, 34086), (40, 34029), (50, 33963), (51, 33957), (52, 33951), (54, 33945), (58, 33927), (62, 33894),

Gene: Howe_42 Start: 34200, Stop: 33877, Start Num: 21

Candidate Starts for Howe_42:

(1, 34353), (7, 34314), (8, 34308), (9, 34293), (Start: 11 @34284 has 10 MA's), (Start: 21 @34200 has 4 MA's), (Start: 27 @34125 has 1 MA's), (29, 34107), (32, 34089), (33, 34086), (40, 34029), (50, 33963), (51, 33957), (52, 33951), (54, 33945), (58, 33927), (62, 33894),

Gene: Kamaru_46 Start: 33198, Stop: 32830, Start Num: 17

Candidate Starts for Kamaru_46:

(Start: 10 @33252 has 2 MA's), (Start: 17 @33198 has 1 MA's), (22, 33156), (Start: 27 @33096 has 1 MA's), (31, 33069), (36, 33027), (37, 33018), (44, 32973), (47, 32946), (50, 32928), (57, 32892),

Gene: Kenna_53 Start: 35132, Stop: 34710, Start Num: 10

Candidate Starts for Kenna_53:

(Start: 10 @35132 has 2 MA's), (12, 35093), (Start: 17 @35078 has 1 MA's), (22, 35036), (Start: 27 @34976 has 1 MA's), (39, 34883), (43, 34865), (47, 34826), (50, 34808), (55, 34787),

Gene: Lton_36 Start: 26921, Stop: 26505, Start Num: 11

Candidate Starts for Lton_36:

(Start: 11 @26921 has 10 MA's), (15, 26873), (16, 26870), (18, 26846), (23, 26813), (34, 26708), (38, 26684), (41, 26663), (48, 26621), (49, 26612),

Gene: Lutum_54 Start: 35132, Stop: 34710, Start Num: 10

Candidate Starts for Lutum_54:

(Start: 10 @35132 has 2 MA's), (12, 35093), (Start: 17 @35078 has 1 MA's), (22, 35036), (Start: 27 @34976 has 1 MA's), (39, 34883), (43, 34865), (47, 34826), (50, 34808), (55, 34787),

Gene: Morkie_35 Start: 27876, Stop: 27460, Start Num: 11

Candidate Starts for Morkie_35:

(Start: 11 @27876 has 10 MA's), (14, 27834), (15, 27828), (16, 27825), (18, 27801), (23, 27768), (26, 27729), (34, 27663), (38, 27639), (48, 27576), (49, 27567),

Gene: MortyNRick_46 Start: 35061, Stop: 34720, Start Num: 19

Candidate Starts for MortyNRick_46:

(5, 35208), (Start: 10 @35154 has 2 MA's), (15, 35094), (19, 35061), (20, 35055), (28, 34971), (30, 34956), (43, 34875), (44, 34863), (63, 34728),

Gene: OneDirection_32 Start: 26498, Stop: 26082, Start Num: 11

Candidate Starts for OneDirection_32:

(Start: 11 @26498 has 10 MA's), (14, 26456), (15, 26450), (16, 26447), (18, 26423), (23, 26390), (26, 26351), (34, 26285), (38, 26261), (49, 26189),

Gene: Pepperoni_33 Start: 27643, Stop: 27227, Start Num: 11

Candidate Starts for Pepperoni_33:

(Start: 11 @27643 has 10 MA's), (13, 27604), (14, 27601), (15, 27595), (16, 27592), (18, 27568), (23, 27535), (26, 27496), (34, 27430), (38, 27406), (49, 27334),

Gene: Phistory_53 Start: 34808, Stop: 34392, Start Num: 11

Candidate Starts for Phistory_53:

(Start: 11 @34808 has 10 MA's), (14, 34766), (23, 34700), (25, 34679), (41, 34550), (46, 34511), (50, 34490), (53, 34475), (60, 34439),

Gene: PhorbesPhlower_35 Start: 27304, Stop: 26888, Start Num: 11

Candidate Starts for PhorbesPhlower_35:

(Start: 11 @27304 has 10 MA's), (14, 27262), (23, 27196), (24, 27184), (25, 27175), (41, 27046), (46, 27007), (50, 26986), (53, 26971), (60, 26935),

Gene: Twinkle_41 Start: 35259, Stop: 34936, Start Num: 21

Candidate Starts for Twinkle_41:

(1, 35412), (7, 35373), (8, 35367), (9, 35352), (Start: 11 @35343 has 10 MA's), (Start: 21 @35259 has 4 MA's), (Start: 27 @35184 has 1 MA's), (29, 35166), (32, 35148), (33, 35145), (40, 35088), (50, 35022), (51, 35016), (52, 35010), (54, 35004), (58, 34986), (62, 34953),

Gene: VanLee_33 Start: 28369, Stop: 27926, Start Num: 11

Candidate Starts for VanLee_33:

(6, 28414), (Start: 11 @28369 has 10 MA's), (15, 28315), (22, 28261), (30, 28180), (39, 28114), (42, 28099), (44, 28087), (45, 28078), (56, 28009), (57, 28000), (59, 27997), (63, 27934),